

CANADA FLIGHT SUPPLEMENT / GPH 205

Effective 0901Z 20 November 2008 to 0901Z 15 January 2009

AERODROME/FACILITY DIRECTORY B1053

YARMOUTH NS

CYQI

REF	N43 49 37 W66 05 17 Adj E 18°W UTC-4(3) Elev 141' A5003 F-22 LO8 HI6 CAP	
OPR	Yarmouth Airport Commission 902-742-6466 Cert	
PF	A-1 C-2,3,4,5,6	
CUST	AOE/110 888-226-7277 11-20Z Mon-Fri (exc hols) 11-19Z Sat-Sun	
FLT PLN	NOTAM FILE CYQI	
FIG	Halifax 866-WXBRIEF or (French) 866-GOMÉTÉO (Toll free within Canada) or 866-541-4106 (Toll free within Canada & USA)	
ACC	Moncton 506-867-7176 or 866-480-8200 Flt Plns by Fax 506-867-7180 & include phone numbers where pilot can be reached prior to dep	
WX	METAR H24 TAF H24 issue times: 00, 06, 12, 18Z	
SERVICES	Call out chg may be levied for one or more svcs. 100LL, JA-1 (CON Irving Oil IP JA-1, FSII) HPR, ltd hrs, ctc aprt opr	
FUEL	65, 100	
OIL	1, 2	
S	D & A-ice	
SUP FL	Yarmouth Airport Commission (Irving Oil) 902-742-6484	
MIL CON		
RWY DATA	Rwy 06(060°)/24(240°) 6000x150 asphalt Rwy 06 down 0.42% Rwy 15(151°)/33(331°) 5000x150 asphalt Rwy 15 down 0.34%	
RCR	Opr 902-742-6466 CRFI & win maint avbl ltd hrs PLR/PCN	
LIGHTING	06-AD (non-std 2000') (TE HI) V2, 24-AE(TE HI), 15-AS(TE ME), 33-AS(TE ME)	
COMM		
DRCO	Halifax Rdo 123.55 (FISE)	
MF	UNICOM (AU) 123.0 5NM 3100 ASL (CAR 602.98)	
PAL	Moncton Ctr 123.9 368.5	
NAV		
NDB	QI 206 (M) N43 47 36 W66 07 34 060° 1.9NM to thld 06 PLEASANT LAKE AC 230 (L) N43 51 39 W66 02 37 240° 2.5NM to thld 24	
VOR/DME	YQI 113.3 Ch 80 N43 49 30 W66 04 57 (164') at A/D	
ILS	IQI 109.7 (Rwy 24-06) RVR	
CAUTION	Acft over 50,000 lbs not authorized on twy "B" due to low PLR. Daily radiosonde balloon launches with an ascent rate of 1000 ft/min btwn hrs of 1115-1345Z and 2315-0145Z.	

CANADA FLIGHT SUPPLEMENT / GPH 205

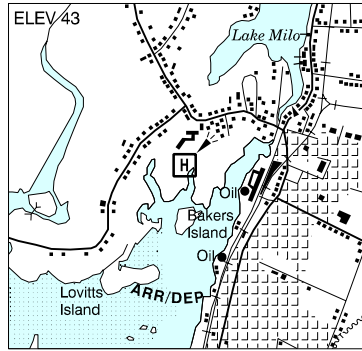
Effective 0901Z 20 November 2008 to 0901Z 15 January 2009

B1054 AERODROME/FACILITY DIRECTORY

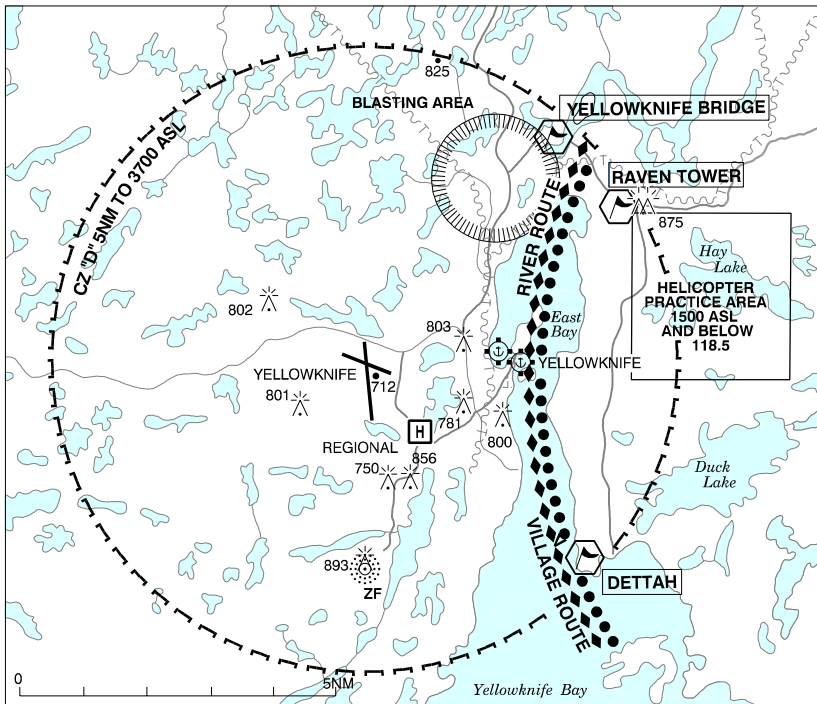
YARMOUTH (REGIONAL HOSP) NS (Heli)

CDU3

REF	N43 50 54 W66 07 17 Adj NW 18°W UTC-4(3) Elev 43' A5003
OPR	Yarmouth Regional Hosp 902-742-3541 Reg PPR
FLT PLN	NOTAM FILE CYQI
FIC	Halifax 866-WXBRIEF or (French) 866-GOMÉTÉO (Toll free within Canada) or 866-541-4106 (Toll free within Canada & USA)
ACC	Moncton 506-867-7176 or 866-480-8200 Fit Plns by Fax 506-867-7180 & include phone numbers where pilot can be reached prior to dep
PAD DATA	80' x 80' asphalt
LIGHTING	FL
COMM	
DRCO	Halifax rdo 123.55 (FISE)
MF	UNICOM (AU) 123.0 5NM centred on Yarmouth land A/D 2.1NM SE 3100 ASL (CAR 602.98)



YELLOWKNIFE VFR TERMINAL PROCEDURES CHART



CANADA FLIGHT SUPPLEMENT / GPH 205

Effective 0901Z 20 November 2008 to 0901Z 15 January 2009

AERODROME/FACILITY DIRECTORY B1055

YELLOWKNIFE NT

CYZF

REF	N62 27 46 W114 26 25 22°E UTC-7(6) Elev 675' A5030 D-13 LO5 HI2 CAP	
OPR	Govt of Northwest Territories 867-873-4680 Cert	
PF	A-1,2,3,6 avbl 14-06Z‡ dly C-3,4,5	
CUST	AOE/15 888-226-7277 16-24Z‡ Mon-Fri	
FLT PLN	NOTAM FILE CYZF & CZNB	
FIC	North Bay 866-WXBRIEF (Toll free within Canada) or 866-541-4109 (Toll free within Canada & USA)	
ACC	Edmonton IFR 888-358-7526 or 780-890-8304/8305	
WX	METAR H24. TAF H24, issue times: 00, 06, 12, 18Z.	
PIK	2nd floor terminal building administration area, 13-06Z‡.	
SERVICES	Tran acft prkg ltd. PPR for prkg 867-445-5518.	
FUEL	100, 100LL, JA-1, F-34, HPR (CON I IP JA-1, FSII)	
OIL	All	
S	1,2, Mil 4 ltd 15-23Z‡ Mon-Fri PNR O/T PPR CO 440 Sqn 867-873-0700 Ext 6440, CSN 766-6440	
ARFF	6 1330-0530Z‡ O/T call out chg 2 hrs PNR, O/T aprt clsd to acft 20 seats & abv, exc for diversions or use as an altn A/D, without PPR.	
JASU	CE16, Elect 10/15	
MIL ADV	440 Ops 383.7 867-873-0700 Ext 6440, CSN 766-6440 No trans svcg avbl.	
PVT ADV	Midnight Petroleum (Esso) 122.9 867-766-4000 1230-05Z‡ Mon-Fri, 14-05Z‡ Sat-Sun, Jun-Aug; 14-04Z‡ Mon-Fri, 16-04Z‡ Sat-Sun, Sep-May. Diamond Aviation Svcs (Shell) 128.95 867-669-2180 1230-2359Z‡	
MIL CON	Midnight Petroleum 867-766-4000	
RWY DATA	Rwy 15(154°)/33(334°) 7500x150 asphalt Rwy 09(094°)/27(274°) 5000x150 asphalt	
TWY	Twys D, E, F, G & K uncontrolled.	
RCR	Opr CRFI win maint 12-05Z‡ Mon-Fri, Sat, Sun and hols CRFI at 13, 21 and 04Z‡ and win maint only as required. O/T CRFI and win maint 2 hrs PNR 867-873-4049/445-5518. Call out chg may be levied. PLR/PCN	
LIGHTING	09-AD(TE ME) P2, 27-AD(TE ME) P2, 15-AS(TE HI) P2, 33-AE(TE HI)	
COMM	RCO Arctic rdo 5680 (FISE) 126.7 (FISE) 122.5(FISE) 262.0 (FISE) ATIS 128.4 14-05Z‡ GND 121.9 14-05Z‡ TWR 118.5 340.8 (E) 14-05Z‡ (emerg only 867-873-3121) MF rdo 118.5 (E) 05-14Z‡ 5NM 3700 ASL (CAR 602.98) (emerg only 867-873-4049) PAL Edmonton Ctr 135.8 VDF 118.5	
NAV	NDB ZF 356 (M) N62 24 38 W114 26 04 334° 2.5NM to A/D VORTAC YZF 115.5 Ch 102 N62 27 52 W114 26 12 (712') at A/D ILS IZF 109.5 (Rwy 33/15) RVR	
CAUTION	Extv migratory bird activity Apr-Oct. Drainage ditches parallel rwy 15/33 310' W & 260' E centreline respectively, commencing 2000' fr thld rwy 33 to intxn with rwy 09/27. Frost heaves/depressions rwy 09/27 extend laterally across rwy 1200' fr thld rwy 09; also at mid-point twy A.	

CANADA FLIGHT SUPPLEMENT / GPH 205

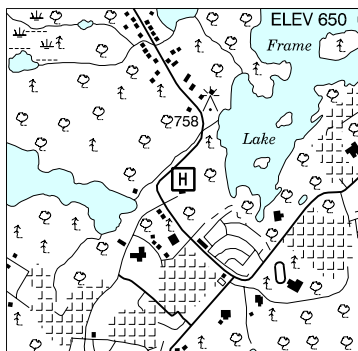
Effective 0901Z 20 November 2008 to 0901Z 15 January 2009

B1056 AERODROME/FACILITY DIRECTORY

YELLOWKNIFE (REGIONAL HOSP) NT (Heli)

CEH7

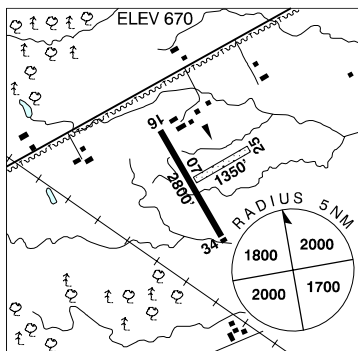
REF	N62 26 51 W114 24 23 22°E UTC-7(6) Elev 650' A5030
OPR	Yellowknife Regional Hosp 867-669-4111 Cert PPR
FLT PLN	NOTAM FILE CYZF
FIC	North Bay 866-WXBRIEF (Toll free within Canada) or 866-541-4109 (Toll free within Canada & USA)
ACC	Edmonton IFR 888-358-7526 or 780-890-8304/8305
WX	METAR H24. TAF H24, issue times: 00, 06, 12, 18Z.
PAD DATA	70' dia 100' dia
LIGHTING	RY (LO)
COMM	
TWR	Yellowknife 118.5 14-05Z‡
MF	Yellowknife rdo 118.5 05-14Z‡ 5NM centred on Yellowknife A/D 3700 ASL (CAR 602.98)
PRO	Arr/dep to/fr N quad.



YORK ON

CPP6

REF	N43 02 15 W79 51 09 1.7NE 10°W UTC-5(4) Elev 670' VTA A5000 F-21
OPR	Seneca Aero Club 905-765-6289 Reg
PF	B-1 D-2,3,4,5,6
FLT PLN	NOTAM FILE CYHM
FIC	London 866-WXBRIEF (Toll free within Canada) or 866-541-4104 (Toll free within Canada & USA)
RWY DATA	Rwy 16/34 2800x35 asphalt Thld 34 displ 100' Rwy 07/25 1350x100 turf
RCR	Opr Ltd win maint. Rwy 07/25 may be soft in spring.
COMM	
ATF	tfc 123.2 5NM 3700 ASL
PRO	Glider activity wknds only Mar-Jun & Sep-Nov. Glider gnd 123.2 & glider circuits rgt hand.
CAUTION	P-line 30 AGL along road aprx 230' fr thld 16. Scrub trees about 40' high aprx 75' fr thld 07. Ditch at thld 34.



CANADA FLIGHT SUPPLEMENT / GPH 205

Effective 0901Z 20 November 2008 to 0901Z 15 January 2009

AERODROME/FACILITY DIRECTORY B1057

YORK LANDING MB

CZAC

REF	N56 05 22 W96 05 21 Adj N 3°E UTC-6(5) Elev 621' A5016 A5024 D-14 E-16 E-17 LO3 CAP	
OPR	Govt of Manitoba 204-677-6722 Cert	
PF	A-1 C-2,4 Tml bldg opr 13-18Z†, 19-2115Z† Mon-Fri, clsd Sat, Sun & hols	
FLT PLN	NOTAM FILE CYIV	
FIC	Winnipeg 866-WXBRIEF (Toll free within Canada) or 866-541-4103 (Toll free within Canada & USA)	
RWY DATA	Rwy 10(101°)/28(281°) 3395x85 crushed rock	
RCR	APM 204-341-2324 13-18Z†, 19-2115Z† Mon-Fri exc holsO/T 204-341-2128	
LIGHTING	10-(TE LO), 28-(TE LO) ARCAL-122.8 type J (see CAUTION)	
COMM		
ATF	UNICOM ltd hrs O/T tfc 122.8 5NM 3700 ASL	
NAV		
NDB	6X 339 (M) N56 05 18 W96 05 49 at A/D Pvt	
CAUTION	Rwy edge lgt installed higher than std (aprx 27 inches high loc 5' outside rwy edge).	

YORKTON MUNI SK

CYQV

REF	N51 15 53 W102 27 42 2.8N 10°E UTC-6 Elev 1635' A5006 E-16 LO2 HI4 CAP	
OPR	City 306-786-1730 Cert	
PF	A-1 C-2,3,4,5,6	
FLT PLN	NOTAM FILE CYQV	
FIC	Edmonton 866-WXBRIEF (Toll free within Canada) or 866-541-4102 (Toll free within Canada & USA)	
WX	Legacy AWOS TAF 10-04Z, issue times: 10,12,18,00Z.	
SERVICES	Call out chg may be levied for one or more svcs	
FUEL	100LL, JA-1 with FSII 306-786-1863 15-23Z Nov-Apr; 14-24Z Mon-Fri, 15-24Z Sat-Sun, May-Oct, exc Jan 1, Dec 25 & Good Friday	
OIL	All	
S	1,2,3,4 (lgt acft only), 5,6	
RWY DATA	Rwy 03(035°)/21(215°) 4800x150 asphalt Rwy 21 up 0.77% Rwy 12(125°)/30(305°) 3000x100 gravel/asphalt, first 600' rwy 12 asphalt	
RCR	Opr 14-24Z Mon-Fri exc hols O/T 306-786-3345 Rwy 12/30 rstd to acft less than 15,000 lbs PLR/PCN	
LIGHTING	03-AD(TE LO), 21-AD(TE LO), 12-(TE LO), 30-(TE LO) ARCAL-122.2 type J	
COMM		
RCO	Regina rdo 122.2 296.6 (RAAS) 12-04Z Edmonton rdo 123.475 (FISE)	
MF	Regina rdo 12-04Z O/T tfc 122.2 296.6 5NM 4600 ASL (CAR 602.98)	

CANADA FLIGHT SUPPLEMENT / GPH 205

Effective 0901Z 20 November 2008 to 0901Z 15 January 2009

B1058 AERODROME/FACILITY DIRECTORY

YORKTON MUNI SK (Cont'd)

CYQV

NAV

NDB	QV 385 (L) N51 12 58 W102 32 31 036° 3.8NM to thld 03
VORTAC	YQV 115.8 Ch 105 N51 15 51 W102 28 07 (1665') at A/D
