

CANADA FLIGHT SUPPLEMENT / GPH 205

Effective 0901Z 20 November 2008 to 0901Z 15 January 2009

AERODROME/FACILITY DIRECTORY B1005

WABASCA AB

CEE5

REF	N55 57 43 W113 49 09 2SE 18°E UTC-7(6) Elev 1820' A5015 E-15 E-16 LO1	
OPR	Municipal District #17 780-891-3778 Reg	
PF	B-1 C-2,4,5	
FLT PLN	NOTAM FILE CYEG	
FIC	Edmonton 866-WXBRIEF (Toll free within Canada) or 866-541-4102 (Toll free within Canada & USA)	
ACC	Edmonton IFR 888-358-7526 or 780-890-8304/8305	
RWY DATA	Rwy 06(071°)/24(251°) 3540x100 asphalt	
RCR	Opr Ltd win maint	
LIGHTING	06-(TE ME), 24-(TE ME) ARCAL-123.2 type K	
COMM		
ATF	tfc 123.2 5NM 4900 ASL	
NAV		
NDB	E3 361 N55 57 49 W113 49 25 at A/D Pvt	
DME	E3 110.4 (M) Ch 41 N55 57 48 W113 49 24 (1840') at A/D Pvt	

WABUSH NL

CYWK

REF	N52 55 19 W66 51 52 1NE 23°W UTC-4(3) Elev 1808' A5019 E-18 E-19 LO5 LO7 HI1 CAP	
OPR	TC 709-282-5412 Cert	
PF	A-1,3,6 C-2,4,5	
FLT PLN	NOTAM FILE CYWK	
FIC	Québec 866-GOMÉTÉO or 866-WXBRIEF (Toll free within Canada) or 866-541-4105 (Toll free within Canada & USA)	
WX	METAR H24 TAF H24, issue times: 02, 08, 14, 20Z	
SERVICES	Call out chg may be levied for one or more svcs. De-icing PNR 709-282-3333	
FUEL	100LL, JA-1, FSII O/R 709-282-5525	
OIL	All	
JASU	10/15 PNR 709-282-3333/3112	
RWY DATA	Rwy 18(183°)/36(003°) 6000x150 asphalt	
RCR	Opr CRFI 12-2030Z±. Win maint. 2030-04Z± 2 hr PNR. No win maint. 04-12Z± exc MEDEVAC flt 2 hrs PNR. PLR/PCN	
LIGHTING	18-AO(TE HI) P2, 36-AN(TE HI)	

CANADA FLIGHT SUPPLEMENT / GPH 205

Effective 0901Z 20 November 2008 to 0901Z 15 January 2009

B1006 AERODROME/FACILITY DIRECTORY

WABUSH NL (Cont'd)

CYWK

COMM	<p>RADIO 122.0 296.2 (E) (emerg only 709-282-6224)</p> <p>RCO Québec rdo 126.7 (FISE)</p> <p>MF rdo 122.0 5NM 4800 ASL (CAR 602.98)</p> <p>PAL Montréal Ctr 132.25</p> <p>VDF 122.0</p>
NAV	<p>VOR/DME YWK 112.3 Ch 70 N52 57 36 W66 51 13 (2267') 216° 2.3NM to A/D</p> <p>ILS IWK 110.3 (Rwy 36)</p>
CAUTION	<p>BLASTING: Mine blasting ops within 1.2 NM radius N52 54 27 W66 55 54 (aprx 2.5 NM W of A/D), within 2.2 NM radius N53 02 50 W66 56 21 (aprx 8 NM N of A/D) to 8500 ASL, and within 6 NM radius N52 44 00 W67 21 00 (aprx 20 NM WSW of A/D-Mont Wright Area) to 8000 ASL. Ctc Wabush rdo 122.0 for active blasting times.</p> <p>WINDS: Winds reports E to SE unrel due terrain.</p> <p>ENVIRONMENT: Ditch 200' W & parallel to rwy centreline.</p> <p>APCH LIGHTING: Roadway lights similar to apch lighting 3NM from thld 18, left of centreline.</p>

WADENA SK

CKS7

REF	N51 56 W103 50 1SW 11°E UTC-6 Elev 1740' A5006 E-16		ELEV 1740
OPR	Town 306-338-2145 Reg		
PF	B-1 C-2,4,5		
FLT PLN	NOTAM FILE CYXE		
FIC	Edmonton 866-WXBRIEF (Toll free within Canada) or 866-541-4102 (Toll free within Canada & USA)		
SERVICES	S 4,5,6		
RWY DATA	Rwy 10(099°)/28(279°) 2500x75 gravel		
RCR	Opr after 23Z call 306-338-3259 Ltd win maint		
COMM	ATF tfc 123.2 5NM 4800 ASL		

CANADA FLIGHT SUPPLEMENT / GPH 205

Effective 0901Z 20 November 2008 to 0901Z 15 January 2009

AERODROME/FACILITY DIRECTORY B1007

WAINWRIGHT AB

CYWV

REF	N52 47 45 W110 51 27 1.7S 16°E UTC-7(6) Elev 2230' A5015 E-16 LO2 HI3	
OPR	Town 780-842-3381 O/T 780-842-2564 Reg	
PF	A-1,2 C-2,3,4,5,6	
FLT PLN	NOTAM FILE CYWV	
FIC	Edmonton 866-WXBRIEF (Toll free within Canada) or 866-541-4102 (Toll free within Canada & USA)	
ACC	Edmonton IFR 888-358-7526 or 780-890-8304/8305	
SERVICES		
FUEL	100LL PNR 780-842-2279	
OIL	All	
RWY DATA	Rwy 12(121°)/30(301°) 3000x75 asphalt/snow	
RCR	Opr Ltd maint, snow may be plowed or compacted.	
LIGHTING	12-(TE ME), 30-(TE ME) ARCAL-122.8 type K	
COMM		
ATF	UNICOM ltd hrs O/T tfc 122.8 5NM 5300 ASL	
NAV		
VOR/DME	YWV 114.5 Ch 92 N52 58 53 W110 50 00 (2230') 171° 11.4NM to A/D	
PRO	Rgt hand circuits rwy 30 (CAR 602.96).	

WAINWRIGHT / CAMP WAINWRIGHT FIELD AB

CFF7

REF	N52 50 W110 54 Adj NW 16°E UTC-7(6) Elev 2170' A5015 E-16 LO2	
OPR	DND 780-842-1363 Ext 1202/1616 CSN 319-530-1202/1616 Mil PPR	
PF	B-1 C-2,3,4,5	
FLT PLN	NOTAM FILE CYLL	
FIC	Edmonton 866-WXBRIEF (Toll free within Canada) or 866-541-4102 (Toll free within Canada & USA)	
ACC	Edmonton IFR 888-358-7526 or 780-890-8304/8305	
RWY DATA	Rwy 11/29 5036x120 turf Thld 11 displ 980'.	
RCR	Opr	
COMM		
MIL	Range ctl 49.9 FM 229.8 780-842-1363 Ext 1610, CSN 319-530-1610	
PRO	Lctd within CYR 203, cont instv jet, transport & heli tfc & live firing surface to 17,000 ASL without advanced ntc.	

WAINWRIGHT (FIELD 21) AB — See WAINWRIGHT / WAINWRIGHT (FIELD 21)

CANADA FLIGHT SUPPLEMENT / GPH 205

Effective 0901Z 20 November 2008 to 0901Z 15 January 2009

B1008 AERODROME/FACILITY DIRECTORY

WAINWRIGHT (HEALTH CENTRE) AB (Heli)

CWH2

REF	N52 50 35 W110 51 53 16°E UTC-7(6) Elev 2262' A5015	
OPR	Wainwright Health Centre 780-842-3324 Cert PPR	
PF	B-4 C-1,2,3,5	
FLT PLN	NOTAM FILE CYWV FIC Edmonton 866-WXBRIEF (Toll free within Canada) or 866-541-4102 (Toll free within Canada & USA) ACC Edmonton IFR 888-358-7526 or 780-890-8304/8305	
PAD DATA	85' dia turf	
RCR	Opr	
LIGHTING	RY(LO) (Lgt'd windsock aprx 138' SW pad)	
COMM	ATF UNICOM ltd hrs O/T tfc 122.8 5NM centred on Wainwright A/D 2.8NM SSE 5300 ASL	
PRO	Two arr/dep paths brg 106° & 241° fr heli.	
CAUTION	P-lines E of heli.	

WAINWRIGHT / WAINWRIGHT (FIELD 21) AB

CFP7

REF	N52 49 50 W111 06 02 9W 16°E UTC-7(6) Elev 2250' A5015 E-16 LO2 HI3	
OPR	DND 780-842-1363 Ext 1202/1616 CSN 319-530-1202/1616 Mil PPR	
PF	B-1 C-2,3,4,5	
FLT PLN	NOTAM FILE CYLL FIC Edmonton 866-WXBRIEF (Toll free within Canada) or 866-541-4102 (Toll free within Canada & USA) ACC Edmonton IFR 888-358-7526 or 780-890-8304/8305	
RWY DATA	Rwy 11/29 6700x85 asphalt	
RCR	Opr Ltd win maint	
LIGHTING	11-(TE LO), 29-(TE LO)	
COMM	MIL Range ctl 49.9 FM 229.8 780-842-1363 Ext 1610, CSN 319-530-1610	
PRO	Rgt hand circuits rwy 11 (CAR 602.96). Lctd within CYR 203, cont intsv jet, transport & heli tfc & live firing surface to 17,000 ASL without advanced ntc. Bird sanctuary 1.6NM NE. Circle S of field only.	

CANADA FLIGHT SUPPLEMENT / GPH 205

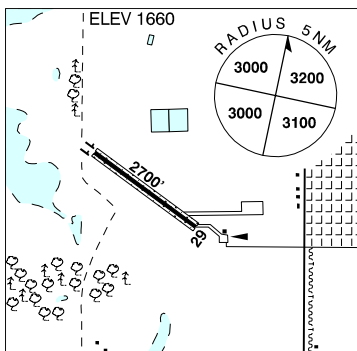
Effective 0901Z 20 November 2008 to 0901Z 15 January 2009

AERODROME/FACILITY DIRECTORY B1009

WAKAW SK

CKT7

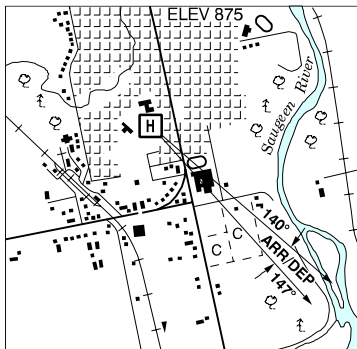
REF	N52 39 W105 46 Adj W 12°E UTC-6 Elev 1660' A5015 E-16
OPR	Town 306-233-4223 Reg
PF	B-1 C-2,4,5
FLT PLN	NOTAM FILE CYXE
FIG	Edmonton 866-WXBRIEF (Toll free within Canada) or 866-541-4102 (Toll free within Canada & USA)
SERVICES	
S	4,5,6
RWY DATA	Rwy 11(114°)/29(294°) 2700x100 turf/treated gravel
RCR	306-233-5394/4642 Ltd win maint
COMM	
ATF	tfc 123.2 5NM 4700 ASL
PRO	Rgt hand circuits rwy 11 (CAR 602.96).
CAUTION	CYA 312(P) within 1NM radius of aprt, extensive parajump activity in area to 12,000 ASL.



WALKERTON (COUNTY OF BRUCE GEN HOSP) ON (Heli)

CNG6

REF	N44 07 16 W81 09 08 Adj S 9°W UTC-5(4) Elev 875' A5000
OPR	County of Bruce Gen Hosp 519-881-1220 Cert PPR
FLT PLN	NOTAM FILE CYVV
FIG	London 866-WXBRIEF (Toll free within Canada) or 866-541-4104 (Toll free within Canada & USA)
PAD DATA	86' x 86' asphalt 114' x 114' Rstd max heli length 57.5'
LIGHTING	RY(LO) RF(F/L)
COMM	
A/G	Ambulance dispatch 129.275
PRO	Arr/dep btwn 140°-147° fr heli. Preferred direction 143°.
CAUTION	Brightly lgtd park under the apch 900' fr heli.



WAPEKEKA ON — See ANGLING LAKE / WAPEKEKA

CANADA FLIGHT SUPPLEMENT / GPH 205

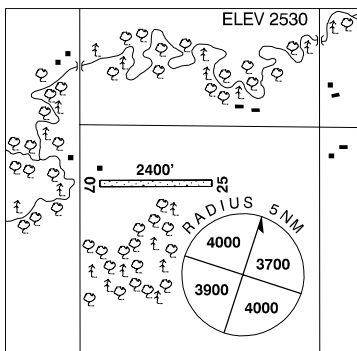
Effective 0901Z 20 November 2008 to 0901Z 15 January 2009

B1010 AERODROME/FACILITY DIRECTORY

WARBURG / ZAJES AB

CFH8

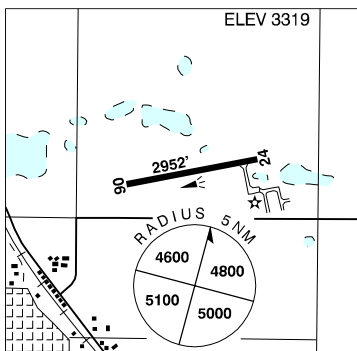
REF	N53 13 W114 20 2.4N 18°E UTC-7(6) Elev 2530' A5015 E-15 E-16
OPR	K.S. Zajes 780-848-2508 Reg PPR
PF	B-1 D-2,3,5
FLT PLN	NOTAM FILE CYEG
FIC	Edmonton 866-WXBRIEF (Toll free within Canada) or 866-541-4102 (Toll free within Canada & USA)
RWY DATA	Rwy 07/25 2400x90 turf
RCR	Opr Ltd win maint
COMM	
ATF	tfc 123.2 5NM 5600 ASL



WARNER AB

CEP6

REF	N49 17 36 W112 11 21 1NE 15°E UTC-7(6) Elev 3319' A5005 E-16
OPR	Village 403-642-3877 Reg
PF	C-1 D-2,3,5
FLT PLN	NOTAM FILE CYQL
FIC	Edmonton 866-WXBRIEF (Toll free within Canada) or 866-541-4102 (Toll free within Canada & USA)
ACC	Edmonton IFR 888-358-7526 or 780-890-8304/8305
RWY DATA	Rwy 06(062°)/24(242°) 2952x75 asphalt
RCR	Opr Ltd maint
LIGHTING	06-(TE ME), 24-(TE ME) ARCAL-122.8 type K
COMM	
ATF	UNICOM ltd hrs O/T tfc 122.8 5NM 6400 ASL



CANADA FLIGHT SUPPLEMENT / GPH 205

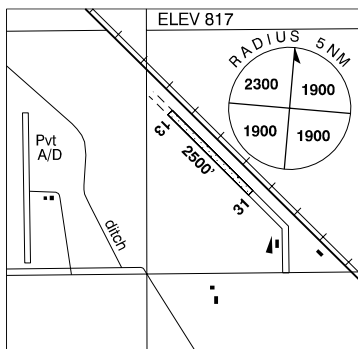
Effective 0901Z 20 November 2008 to 0901Z 15 January 2009

AERODROME/FACILITY DIRECTORY B1011

WARREN / WOODLANDS MB

CKX2

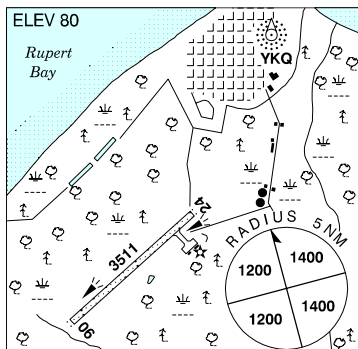
REF	N50 09 34 W97 35 28 2NW 5°E UTC-6(5) Elev 817' VTA A5007 E-16 E-17
OPR	Rural muni of Woodlands 204-383-5679 Fax 204-383-5169 Reg
PF	C-1,2,3,4,5 D-6
FLT PLN	NOTAM FILE CYDN
FIC	Winnipeg 866-WXBRIEF (Toll free within Canada) or 866-541-4103 (Toll free within Canada & USA)
RWY DATA	Rwy 13(130°)/31(310°) 2500x100 turf
RCR	204-383-5679 No win maint
COMM	
ATF	Woodlands tfc 123.2 5NM 2900 ASL
CAUTION	Hand gliders & ultra-lights in vic. Lgtd tower 1210 ASL (375 AGL) 2.6NM WNW of A/D.



WASKAGANISH QC

CYKQ

REF	N51 28 24 W78 45 30 Adj S 15°W UTC-5(4) Elev 80' A5009 E-18 LO3 HI1 HI4 CAP
OPR	Waskaganish Band Council 819-895-8757/8925 O/T 819-895-8650 Cert
PF	C-1, (3,5,6 ctc Opr)
FLT PLN	NOTAM FILE CYGL
FIC	Québec 866-GOMÉTÉO or 866-WXBRIEF (Toll free within Canada) or 866-541-4105 (Toll free within Canada & USA)
ACC	Montréal 800-633-1353
CARS	819-895-8757 ltd hrs
WX	METAR dur CARS hrs. TAF 15-22Z†, issue times: 15Z† Mon-Fri 17-22Z†, issue time: 19Z† Sun.
RWY DATA	Rwy 06(063°)/24(243°) 3511x100 gravel
RCR	Opr 14-22Z†
LIGHTING	06-AS(TE ME), 24-AS(TE ME) ARCAL-122.1 type K
COMM	
MF/ATF	aprt rdo (English only) ltd hrs O/T tfc 122.1 5NM 3100 ASL (CAR 602.98)
APRT RDO	122.1 (V) 14-22Z† Mon-Fri; 15-23Z† Sun
NAV	
NDB	YKQ 351 (M) N51 29 13 W78 44 41 221° 0.7NM to thld rwy 24
CAUTION	Bird activity at the aeration basin, aprx 0.5NM WSW of thld 06.



WATERLOO ON — See KITCHENER / WATERLOO

CANADA FLIGHT SUPPLEMENT / GPH 205

Effective 0901Z 20 November 2008 to 0901Z 15 January 2009

B1012 AERODROME/FACILITY DIRECTORY

WATERVILLE / KINGS CO MUNI NS

CCW3

REF	N45 03 07 W64 39 06 Adj E 19°W UTC-4(3) Elev 119' A5003 F-22 LO8 CAP	
OPR	Waterville Airport Cooperative Ltd 902-538-7116 Cert	
PF	B-1 C-2,3,4,5,6	
FLT PLN	NOTAM FILE CYHZ	
FIG	Halifax 866-WXBRIEF or (French) 866-GOMÉTÉO (Toll free within Canada) or 866-541-4106 (Toll free within Canada & USA)	
ACC	Moncton 506-867-7176 or 866-480-8200 Flt Plns by Fax 506-867-7180 & include phone numbers where pilot can be reached prior to dep	
SERVICES	Chg may be levied for one or more svcs	
FUEL	100LL, JA-1 1230-21Z†	
OIL	All	
S	1,2,3,4,5,6	
RWY DATA	Rwy 10(095°)/28(275°) 3500x75 asphalt	
RCR	Opr Ltd win maint PNR	
LIGHTING	10-(ME), 28-(ME) ARCAL-122.8 type J	
COMM		
ATF	Waterville UNICOM ltd hrs O/T Waterville tfc 122.8 5NM 3100 ASL	
NAV		
NDB	AYLESFORD GF 341 N45 01 26 W64 48 37 096° 6.7NM to thld 10	
PRO	IFR dep, ctc Greenwood tml 902-765-1494 Ext 5327. RWY 28 RESTRICTION: VFR dep to turn left and remain S of rwy centreline until E of aprt. If rgt turn is rqrd, acct to ctc tml BEFORE commencement of rgt turn on 120.6 for tfc info. CYA 702(P) 2.3NM NW of thld 10.	
CAUTION	PARACHUTING: Parachuting below 12,500 ASL within 2NM. AIRSPACE: Military IFR acft operating within 3NM N of aprt. OBST: Tower 1056 ASL 4.5NM ESE of A/D.	

CANADA FLIGHT SUPPLEMENT / GPH 205

Effective 0901Z 20 November 2008 to 0901Z 15 January 2009

AERODROME/FACILITY DIRECTORY B1013

WATROUS SK

CKU7

REF	N51 41 07 W105 22 12 4E 12°E UTC-6 Elev 1700' A5006 E-16	
OPR	Town 306-946-3369 Fax 306-946-2974 Reg	
PF	C-1,2,3,4,5	
FLT PLN	NOTAM FILE CYXE FIC Edmonton 866-WXBRIEF (Toll free within Canada) or 866-541-4102 (Toll free within Canada & USA)	
RWY DATA	Rwy 07(076°)/25(256°) 2600x60 clay/gravel Rwy 13(128°)/31(308°) 3300x75 turf Rwy 17(168°)/35(348°) 2500x75 turf RCR Opr Ltd win maint ctc opr. Rwy 07/25 soft when wet.	
COMM	ATF tfc 123.2 5NM 4700 ASL	

WATSON LAKE YT

CYQH

REF	N60 06 59 W128 49 21 5W 25°E UTC-8(7) Elev 2255' A5021 A5022 A5029 A5099 D-12 LO5 HI2 CAP	
OPR	Govt of Yukon 867-634-2450 or 867-536-2905/7701 Cert	
PF	A-1 D-2,3,4,5	
FLT PLN	NOTAM FILE CYQH FIC Whitehorse 866-WXBRIEF (Toll free within Canada) or 866-541-4107 (Toll free within Canada & USA) ACC Edmonton IFR 888-358-7526 or 780-890-8304/8305 CARS 867-536-2905 WX METAR H24 TAF H24, issue times: 00, 06, 12, 18Z.	
SERVICES	FUEL 100LL, JA-1 DT 15-03Z May 16-Sep 14; 17-01Z Sep 15-May 15 (Angus Air) 867-536-2059 or 867-536-7708 OIL All S 1,2,3,4,5,6	
RWY DATA	Rwy 08(085°)/26(265°) 5500x150 asphalt TWY Twy F max wt 4,000 lbs. Twy D & F no win maint. Day use only. APRON Apron IV no win maint. Day use only. RCR CARS CRFI ltd hrs. Win ops 16-24Z. RCR/snow removal ltd avail. CTC CARS. Call out chg applicable.	
LIGHTING	08-AS(TE ME) P2, 26-AD (non-std 1800') AS(TE ME) P2	
COMM	RCO Whitehorse rdo 126.7 (FISE) MF aprt rdo 122.1 5NM 5300 ASL (CAR 602.98) APRT RDO 122.1 (V)	

CANADA FLIGHT SUPPLEMENT / GPH 205

Effective 0901Z 20 November 2008 to 0901Z 15 January 2009

B1014 AERODROME/FACILITY DIRECTORY

WATSON LAKE YT (Cont'd)

CYQH

NAV	
NDB	QH 248 (M) N60 10 37 W128 50 45 145° 3.5NM to A/D LAKESHORE XG 338 (L) N60 06 46 W128 47 58 at A/D
VOR/DME	YQH 114.9 Ch 96 N60 05 11 W128 51 28 (2517') 038° 2.1NM to A/D
DME	IQH 110.3 Ch 40 N60 07 09 W128 49 44 (2297')
ILS	IQH 110.3 (Rwy 08) RVR
CAUTION	Twy F rough, cracked asphalt.

WAWA ON

CYXZ

REF	N47 58 00 W84 47 12 1.7SSW 7°W UTC-5(4) Elev 943' A5001 F-21 LO4 CAP	
OPR	Michipicoten Apt Council Wawa 705-856-2244 Ext 270 Reg	
PF	B-1.6 C-2,3,4,5	
FLT PLN	NOTAM FILE CYXZ	
FIC	London 866-WXBRIEF (Toll free within Canada) or 866-541-4104 (Toll free within Canada & USA)	
WX	METAR 11-24Z. TAF 13-20Z†, issue times: 00, 11, 18Z (DT 00, 10, 12, 18Z)	
SERVICES	Airside emerg phone on wall of ATB. Ltd hrs. 11-24Z† Mon-Sun May 15-Sep 5; 1230-2100Z† Mon-Fri Sep 6-May 14. Clsd Dec 25, 26 & Jan 1 O/T call out chg. Page 800-461-5100	
FUEL	100LL, JA-1	
OIL	Shell multigrade, 80, 100, W80, W100, 15W50	
RWY DATA	Rwy 03/21 4429x100 asphalt Thld 21 displ 689'.	
APRON	Apron I - Airport terminal building. Apron II - Gravel surface, private use.	
RCR	Opr	
LIGHTING	03-AS(TE ME) P2 3.5°, 21-AS(TE ME) P1 4.0° ARCAL-122.8 type K	
COMM		
RCO	London rdo 126.7 (FISE)	
ATF	UNICOM (AU) ltd hrs O/T tfc 122.8 5NM 3900 ASL	
PAL	Toronto Ctr 124.075 298.6	
NAV		
NDB	XZ 205 (M) N48 01 18 W84 44 50 212° 3.3NM to A/D	
VOR/DME	YXZ 112.7 Ch 74 N47 57 02 W84 49 23 062° 1.8NM to A/D	
CAUTION	Twr 1860 ASL (420' AGL) on arr rwy 21/dep rwy 03, 3.3NM fr thrd rwy 21. PAPI apch slope rwy 21 will ensure obstacle clnc.	

CANADA FLIGHT SUPPLEMENT / GPH 205

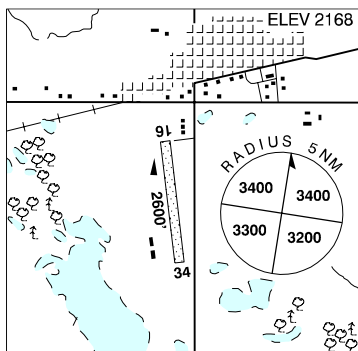
Effective 0901Z 20 November 2008 to 0901Z 15 January 2009

AERODROME/FACILITY DIRECTORY B1015

WAWOTA SK

CKV7

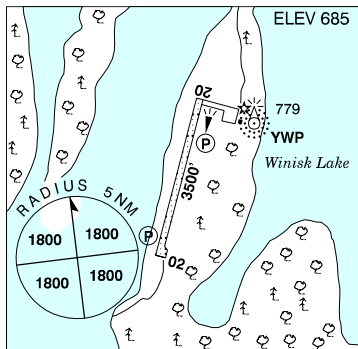
REF	N49 54 W102 02 Adj SW 9°E UTC-6 Elev 2168' A5006 E-16
OPR	Town 306-739-2216 Reg
PF	C-1,2,4,5
FLT PLN	NOTAM FILE CYQV
FIC	Edmonton 866-WXBRIEF (Toll free within Canada) or 866-541-4102 (Toll free within Canada & USA)
RWY DATA	Rwy 16(166°)/34(346°) 2600x135 turf/clay
RCR	Opr Ltd win maint
COMM	
ATF	tfc 123.2 5NM 5200 ASL



WEBEQUIE ON

CYWP

REF	N52 57 35 W87 22 08 1SSW 7°W UTC-5(4) Elev 685' A5017 E-17 LO3 RCAP
OPR	Govt of Ontario 807-473-2082 Cert
PF	C-1,4
FLT PLN	NOTAM FILE CYLH
FIC	Winnipeg 866-WXBRIEF (Toll free within Canada) or 866-541-4103 (Toll free within Canada & USA)
RWY DATA	Rwy 02(022°)/20(202°) 3500x100 gravel
RCR	APM 807-353-5301 13-22Z± Mon-Fri exc hols Rwy cond subject to seasonal & climatic variations.
LIGHTING	02-(TE ME) AP, 20-(TE ME) AP ARCAL-122.8 type K.
COMM	
ATF	tfc 122.8 5NM 3700 ASL
NAV	
NDB	YWP 355 (M) N52 57 38 W87 22 05 at A/D
PRO	Wind shear may be encountered on apch 02 and/or dep fr rwy 20.



CANADA FLIGHT SUPPLEMENT / GPH 205

Effective 0901Z 20 November 2008 to 0901Z 15 January 2009

B1016 AERODROME/FACILITY DIRECTORY

WEKWEËTÌ NT

CFJ2

REF	N64 11 27 W114 04 36 3.2E 23°E GV137°E UTC-7(6) Elev 1206' A5030 A5035 D13 LO5	
OPR	Govt of Northwest Territories Settlement 867-713-2010 or Yellowknife 867-873-4680 Emerg/Incident rpt ctc Govt of Northwest Territories 867-669-1230 or 877-989-1400 Cert	
FLT PLN	NOTAM FILE CYZF	
FIC	North Bay 866-WXBRIEF (Toll free within Canada) or 866-541-4109 (Toll free within Canada & USA)	
RWY DATA	Rwy 13T(127°T)/31T(307°T) 3000x75 gravel Rwy 31T up 0.50%	
RCR	Settlement win maint avbl 16-2330Z± Sun-Fri, O/T 1 hr PNR 867-445-5518. Call out ch may be levied.	
LIGHTING	13T-AS (TE ME) AP, 31T-AS (TE ME) AP ARCAL-123.2 type K APAPI avbl low intensity only	
COMM		
ATF	tfc 123.2 5NM 4300 ASL	
PRO	Rgt hand circuits rwy 13T (CAR 602.96).	
CAUTION	Caribou may stray onto rwy. Only pilots familiar with lcl terrain should use this aprt at ngt because of higher terrain 1/2 NM NW aprt. Acft on opposite ends of rwy may not be visible to each other.	

WEKWEËTÌ NT — See WEKWEËTÌ

Sep 09

WELLAND (COUNTY GEN HOSP) ON (Heli)

CPB3

REF	N42 58 38 W79 14 56 Adj S 10°W UTC-5(4) Elev 585' A5000	
OPR	Welland County Gen Hosp 905-732-6111 Cert PPR	
FLT PLN	NOTAM FILE CYSN	
FIC	London 866-WXBRIEF (Toll free within Canada) or 866-541-4104 (Toll free within Canada & USA)	
PAD DATA	86' dia (40' asphalt, 46' turf) 114' dia Rstd max heli length 57.5'	
RCR	Opr	
LIGHTING	RY(LO) RF(FL)	
PRO	Arr/dep btwn 140°-201° fr heli.	

CANADA FLIGHT SUPPLEMENT / GPH 205

Effective 0901Z 20 November 2008 to 0901Z 15 January 2009

AERODROME/FACILITY DIRECTORY B107

WELLAND / NIAGARA CENTRAL ON

CNQ3

REF	N42 58 45 W79 19 29 3.5W 10°W UTC-5(4) Elev 586' A5000 F-21 LO6 CAP RCAP	
OPR	Niagara Central Aprt Comsn 905-735-9511 Cert	
PF	A-1 C-2,3,4,5,6	
FLT PLN	NOTAM FILE CYSN FIC London 866-WXBRIEF (Toll free within Canada) or 866-541-4104 (Toll free within Canada & USA)	
SERVICES		
FUEL OIL S	100LL 14-22Z‡ All 1,2,3,4,5	
RWY DATA	Rwy 05(048°)23(228°) 3500x100 asphalt Rwy 16(156°)34(336°) 2672x50 asphalt RCR Opr 14-22Z‡ No win maint rwy 16/34	
LIGHTING	05-(TE ME) AP, 23-(TE ME) AP ARCAL-123.5 type K	
COMM	ATF UNICOM ltd hrs O/T tfc 123.5 5NM 3600 ASL	
PRO	Glider activity Sat, Sun, hols Apr-Jun & Sep-Nov.	

WELLER QC — See STANSTEAD / WELLER

WEMINDJI QC

CYNC

REF	N53 00 38 W78 49 52 Adj NW 15°W UTC-5(4) Elev 66' A5018 E-18 LO3 CAP		
OPR	Wemindji Band Council 819-978-0264 Cert		
PF	A-1 C-2,3,4		
FLT PLN	NOTAM FILE CYGL FIC Québec 866-GOMÉTÉO or 866-WXBRIEF (Toll free within Canada) or 866-541-4105 (Toll free within Canada & USA) ACC Montréal 800-633-1353 CARS 819-978-3937/3936 Fax 819-978-3367 ltd hrs (see COMM) WX METAR dur CARS hrs		
RWY DATA	Rwy 10(095°)28(275°) 3511x100 gravel Rwy 10 up 1.02% RCR Opr 13-20Z‡ Mon-Fri, 15-20Z‡ Sat		
LIGHTING	10-AS(TE ME), 28-AS(TE ME) ARCAL-122.1 type K		
COMM	MF/ATF aprt rdo (English only) ltd hrs O/T tfc 122.1 5NM 3100 ASL (CAR 602.98) APRT RDO 122.1 (V) 14-21Z‡ Mon-Fri, 17-22Z‡ Sun		

CANADA FLIGHT SUPPLEMENT / GPH 205

Effective 0901Z 20 November 2008 to 0901Z 15 January 2009

B1018 AERODROME/FACILITY DIRECTORY

WEMINDJI QC (Cont'd)

CYNC

NAV	NDB YNC 385 (L) N53 00 30 W78 49 27 313° 0.3NM to A/D
CAUTION	Extv bird activity.

WESTLOCK AB

CES4

REF	N54 08 32 W113 44 27 4E 18°E UTC-7(6) Elev 2214' A5015 E-15 E-16 LO1	
OPR	Town 780-349-1405 Reg	
PF	B-1 C-2,3,4,5	
FLT PLN	NOTAM FILE CYEG	
FIC	Edmonton 866-WXBRIEF (Toll free within Canada) or 866-541-4102 (Toll free within Canada & USA)	
ACC	Edmonton IFR 888-358-7526 or 780-890-8304/8305	
SERVICES	Call out chg may be levied for one or more svcs	
FUEL	100LL, MG-1	
OIL	All	
S	2,3,4,5,6	
RWY DATA	Rwy 10/28 3000x75 asphalt Thlds 10 & 28 displ 200'.	
RCR	Opr Ltd maint	
LIGHTING	10-(TE LO), 28-(TE LO) ARCAL-122.8 type J 3000' of rwy lgtd commencing 200' prior displ thlds 10 & 28.	
COMM		
ATF	UNICOM ltd hrs O/T tfc 122.8 5NM 5300 ASL	
NAV		
NDB	9Z 236 (L) N54 08 35 W113 44 53 083° 0.26NM to A/D Pvt Unmonitored	
DME	9Z 108.8 Ch 25 N54 08 35 W113 44 57 (2230') to A/D Pvt Unmonitored	
PRO	Rgt hand circuits rwy 28 (CAR 602.96).	
CAUTION	Parachuting on aprt dur daylight hrs. Acft on opposite ends of rwy may not be visible to each other.	

WEST POPLAR SK

CJF5

REF	N49 00 W106 23 7S 12°E UTC-6 Elev 2885' aprx A5006 E-16	
OPR	Valley Hangar of the Montana Pilots Assn C/O V. Wokal 406-228-4023 Reg	
PF	B-1	
CUST	AOE/15 888-226-7277 14-03Z Jun 1-Sep 15; 15-24Z Sep 16-last Sun in Oct; 16-01Z last Sun in Oct-first Sun in Apr; 15-24Z first Sun in Apr-May 31	
FLT PLN	NOTAM FILE CYYN	
FIC	Edmonton 866-WXBRIEF (Toll free within Canada) or 866-541-4102 (Toll free within Canada & USA)	

CANADA FLIGHT SUPPLEMENT / GPH 205

Effective 0901Z 20 November 2008 to 0901Z 15 January 2009

AERODROME/FACILITY DIRECTORY B1019

WEST POPLAR SK (Cont'd)

CJF5

RWY DATA	Rwy 11(111°)/29(291°) 4000x60 earth/turf
RCR	T. Hanson 406-762-3265 No win maint. Soft when wet.
COMM	
ATF	tfc 123.2 5NM 5900 ASL
CAUTION	P-lines on apch rwy 29 unmarked.

WESTPORT / RIDEAU LAKES ON

CRL2

REF	N44 40 00 W76 23 48 0.7SE 13°W UTC-5(4) Elev 500' A5000 F-21	
OPR	Rideau Lakes Flying Club 613-273-3290 Reg	
PF	A-1 C-2,4,5	
FLT PLN	NOTAM FILE CYGK	
FIC	London 866-WXBRIEF (Toll free within Canada) or 866-541-4104 (Toll free within Canada & USA)	
SERVICES	S 4,5	
RWY DATA	Rwy 07(073°)/25(253°) 3000x60 turf/gravel Thld 07 displ 900'.	
RCR	Opr Ltd win maint	
COMM		
ATF	tfc 123.2 5NM 3500 ASL	
CAUTION	Trees 140' W of thld rwy 07 aprx 50 AGL.	

WETASKIWIN (HOSPITAL & CARE CENTRE) AB (Heli)

CWC4

REF	N52 59 18 W113 22 06 Adj N 17°E UTC-7(6) Elev 2494 A5015 RCAP	
OPR	David Thompson Health Region 780-361-7100 Cert PPR	
FLT PLN	NOTAM FILE CYEG	
FIC	Edmonton 866-WXBRIEF (Toll free within Canada) or 866-541-4102 (Toll free within Canada & USA)	
ACC	Edmonton 888-358-7526 or 780-890-8304/8305	
PAD DATA	86' dia FATO asphalt, 115' dia safety area	
LIGHTING	RY(LO) Green	
COMM		
ATF	UNICOM 123.5 5 NM 5600 ASL	
PRO	Arr/dep 081° Arr/dep 243° twin engine only	
CAUTION	Trees N of heli. Light standards on 47th Street.	

CANADA FLIGHT SUPPLEMENT / GPH 205

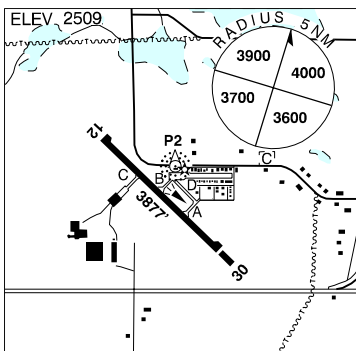
Effective 0901Z 20 November 2008 to 0901Z 15 January 2009

B1020 AERODROME/FACILITY DIRECTORY

WETASKIWIN REGIONAL AB

CEX3

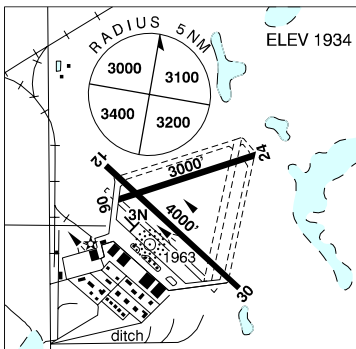
REF	N52 57 54 W113 24 40 Adj W 17°E UTC-7(6) Elev 2509' VTA A5015 E-15 E-16 LO2 T1 CAP
OPR	City of Wetaskiwin 780-352-5858 Cert
PF	A-1 B-2 C-2,3,4,5,6
FLT PLN	NOTAM FILE CYEG
FIC	Edmonton 866-WXBRIEF (Toll free within Canada) or 866-541-4102 (Toll free within Canada & USA)
ACC	Edmonton IFR 888-358-7526 or 780-890-8304/8305
PIK	ATB, pilot lounge, south wall.
SERVICES	
FUEL	100L
OIL	All
S	1,2,3,4,5,6
RWY DATA	Rwy 12(118°)/30(298°) 3877 x 100 asphalt Thld 30 displ 356'.
RCR	Opr Ltd maint
LIGHTING	12-(TE ME), 30-(TE ME) ARCAL-123.5 type K twy C unlighted.
COMM	
ATF	UNICOM 123.5 ltd hrs O/T tfc 123.5 5NM 5600 ASL
NAV	
NDB	P2 334 (L) N52 58 00 W113 24 41 at A/D Pvt
DME	P2 112.7 Ch 74 N52 58 01 W113 24 40 (2525') at A/D Pvt
PRO	Rgt hand circuits rwy 12 (CAR 602.96).
CAUTION	Light standards aprx 26 FT AGL along N side highway S of thld 30.



WEYBURN SK

CJE3

REF	N49 41 51 W103 48 03 2.2NE 10°E UTC-6 Elev 1934' A5006 E-16 LO2 CAP
OPR	Town 306-842-7644 Cert
PF	B-1 C-2,3,4,5,6
FLT PLN	NOTAM FILE CYQR
FIC	Edmonton 866-WXBRIEF (Toll free within Canada) or 866-541-4102 (Toll free within Canada & USA)
SERVICES	
FUEL	100LL
OIL	All
S	4,5
RWY DATA	Rwy 06(062°)/24(242°) 3000x75 asphalt Rwy 06 up 0.38%.
RCR	Rwy 12(122°)/30(302°) 4000x75 asphalt Opr Rwy 06/24 wt rstd to 7000 lbs. No win maint.
LIGHTING	12-(TE LO), 30-(TE LO) ARCAL-122.8 type J
COMM	
ATF	UNICOM ltd hrs O/T tfc 122.8 5NM 5000 ASL



CANADA FLIGHT SUPPLEMENT / GPH 205

Effective 0901Z 20 November 2008 to 0901Z 15 January 2009

AERODROME/FACILITY DIRECTORY B1021

WEYBURN SK (Cont'd)

CGE3

NAV	NDB 3N 298 (L) N49 41 47 W103 48 13 at A/D Pvt
CAUTION	Extv parachuting within 1.5NM radius of A/D 9500 ASL & below. Mar-Nov.

WEYMAN AIRPARK NB

CCG3

REF	N46 02 15 W66 51 32 19°W UTC-4(3) Elev 140' A5003 F-22	
OPR	Dr. R. Bradley 506-363-4322 Reg PPR	
PF	B-1 C-2 D-3,4,5,6	
FLT PLN	NOTAM FILE CYFC	
FIC	Halifax 866-WXBRIEF or (French) 866-GOMÉTÉO (Toll free within Canada) or 866-541-4106 (Toll free within Canada & USA)	
ACC	Moncton 506-867-7176 or 866-480-8200 Fit Plns by Fax 506-867-7180 & include phone numbers where pilot can be reached prior to dep	
RWY DATA	Rwy 05/23 3000x80 sand/gravel/chip seal	
RCR	Opr No win maint	
COMM		
ATF	tfc 123.2 5NM 3100 ASL	
CAUTION	Glider activity Apr 15-Dec 15. Rwy may be soft during thaw. Scottfield Airpark aprx 12NM W, ATF 123.2.	

WEYMONTACHIE QC

CSU5

REF	N47 56 13 W73 49 02 3NW 16°W UTC-5(4) Elev 1171' A5002 A5010 F-21	
OPR	Conseil de Bande de Weymontachie 819-666-2237 Reg	
PF	Ctc Opr	
FLT PLN	(bil) NOTAM FILE CYRJ	
FIC	Québec 866-GOMÉTÉO or 866-WXBRIEF (Toll free within Canada) or 866-541-4105 (Toll free within Canada & USA)	
RWY DATA	Rwy 18/36 2500x75 gravel Rwy 36 up 0.42% first 1558'	
RWY	Opr Soft spots on rwy & tarmac.	
COMM		
ATF	tfc 123.2 5NM 4200 ASL	

CANADA FLIGHT SUPPLEMENT / GPH 205

Effective 0901Z 20 November 2008 to 0901Z 15 January 2009

B1022 AERODROME/FACILITY DIRECTORY

WHALE COVE NU

CYXN

REF	N62 14 24 W92 35 53 4.3N 6°W GV87°E UTC-6(5) Elev 40' A5031 D-14 LO5 HI1 HI2 RCAP	
OPR	Govt of Nunavut 867-645-8200 Cert	
PF	A-1 C-2,3,4,5	
FLT PLN	NOTAM FILE CYXN	
FIC	North Bay 866-WXBRIEF (Toll free within Canada) or 866-541-4109 (Toll free within Canada & USA)	
ACC	Edmonton IFR 888-358-7526 or 780-890-8304/8305	
CARS	867-896-9973 ltd hrs (see COMM), O/T 867-896-9038/9168.	
WX	METAR dur CARS hrs (see COMM).	
RWY DATA	15T(150°T)/33T(330°T) 4000x100 gravel	
RCR	CARS, A/D maint avbl 14-23Z± Mon-Fri exc hols, O/T ctc 867-896-9191 2 hrs PNR, call-out chg. PLR/PCN	
LIGHTING	15T-AS(TE ME) AP, 33T-AS(TE ME) AP ARCAL-122.1 type K	
COMM		
MF	apt rdo 122.1 ltd hrs O/T tfc 5NM 3100 ASL (CAR 602.98)	
APRT RDO	122.1 (V) 1245-2315Z± Mon-Fri; 1445-2115Z± Sat & Sun, exc federal observed hols, O/T 2 hrs PNR, call-out chg.	
NAV		
NDB	YXN 256 (L) N62 14 09 W92 36 04 at A/D.	

WHA TI NT — See WHATI

Sep 09

WHATI NT

CEM3

REF	N63 07 54 W117 14 46 1E 24°E UTC-7(6) Elev 882' A5029 D-12 D-13 LO5	
OPR	Govt of Northwest Territories Hamlet 867-573-3401 or Yellowknife 867-873-4680 Emerg/Incident rpt ctc Govt of Northwest Territories 867-445-5518 or 877-989-1400 Cert	
PF	C-1,2,3,4,5	
FLT PLN	NOTAM FILE CYZF	
FIC	North Bay 866-WXBRIEF (Toll free within Canada) or 866-541-4109 (Toll free within Canada & USA)	
ACC	Edmonton IFR 888-358-7526 or 780-890-8304/8305	
RWY DATA	Rwy 09/27 2991x100 gravel	
RCR	Hamlet win maint 16-2330Z± Sun-Fri, O/T 1 hr PNR 867-445-5518. Call out chg may be levied. PLR/PCN	
LIGHTING	09-AS (TE ME) AP, 27-AS(TE ME) AP ARCAL-123.2 type K, key mic 7 times for AS APAPI 09/27 avbl low intensity only.	

CANADA FLIGHT SUPPLEMENT / GPH 205

Effective 0901Z 20 November 2008 to 0901Z 15 January 2009

AERODROME/FACILITY DIRECTORY B1023

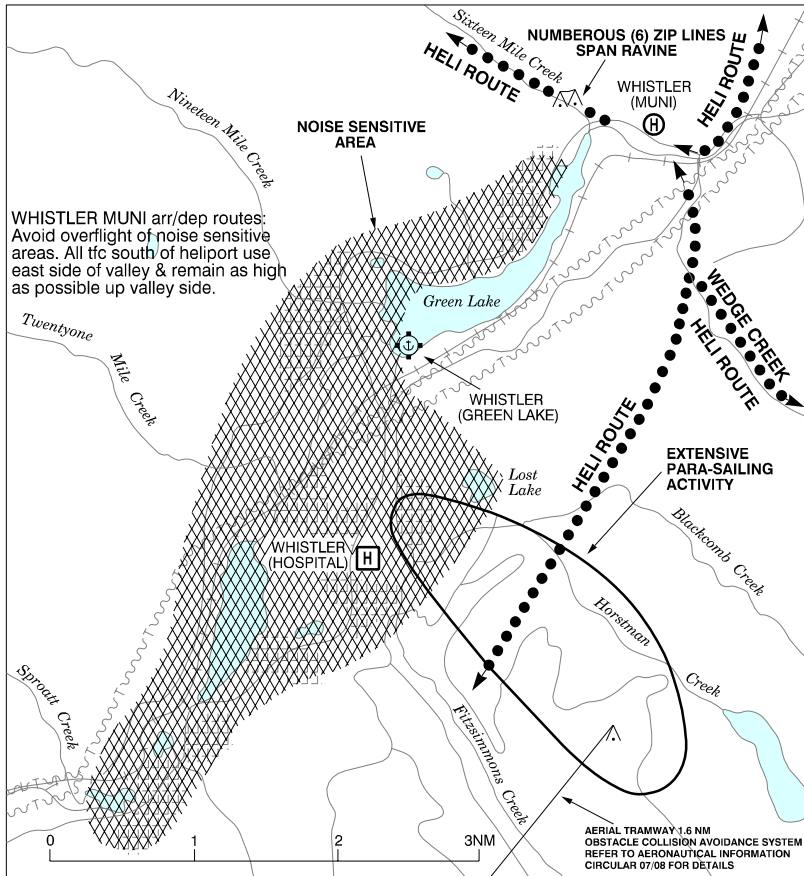
WHATÌ NT (Cont'd)

CEM3

COMM	ATF tfc 123.2 5NM 3900 ASL
CAUTION	Caribou may be on or in vic rwy.

WHETSTONE INTL AB — See DEL BONITA / WHETSTONE INTL

WHISTLER HELI VFR TERMINAL PROCEDURES CHART



CANADA FLIGHT SUPPLEMENT / GPH 205

Effective 0901Z 20 November 2008 to 0901Z 15 January 2009

B1024 AERODROME/FACILITY DIRECTORY

WHISTLER (HOSPITAL) BC (Heli)

CWA4

REF	N50 07 16 W122 57 29 19°E UTC-8(7) Elev 2182' A5004	
OPR	Whistler Health Care Centre 604-932-4911 Cert PPR	
FLT PLN	NOTAM FILE CYVR	
FIC	Kamloops 866-WXBRIEF (Toll free within Canada) or 866-541-4101 (Toll free within Canada & USA)	
WX	METAR 15-01Z (DT 13-01Z)	
PAD DATA	75' dia concrete 100' dia	
RCR	Opr	
LIGHTING	RY(LO) RF(FL) ARCAL-122.8 type J	
COMM		
ATF	tfc 122.7 5NM 5200 ASL	
A/G	ambulance dispatch 149.11 FM	
PRO	Two arr/dep flt paths brg 105° & 356° fr heli. Arr/dep rte 356° day use only and rstd to acft capable & configured for cat A tkof/lbg; ctc ambulance dispatch prior to lbg for vehicle tfc ctl on Lorimer Road. See VTPC for noise abatement rtes.	
CAUTION	Numerous marked 30' tfc & street lgts N heli. Steeper than normal apch rqrd. Aerial tramway aprx 1.6 NM long btn Whistler Mountain and Blackcomb Peak (aprx 2.7 NM ESE A/D) 6206 ASL to 4810 ASL. Obstacle Collision Avoidance System visual warning system within 20 sec range and audible warning "wires" on all VHF freq with 10 sec. For Obstacle Collision Avoidance System info refer to Aeronautical Information Circular 07/08.	

WHISTLER (MUNICIPAL) BC (Heli)

CBE9

REF	N50 10 W122 54 4.5NE 19°E UTC-8(7) Elev 2116' A5004
OPR	Whistler Heliport Society 604-932-4927 Reg Ldg fees
PF	D-1,2,3,4,5,6
FLT PLN	NOTAM FILE CYVR
FIC	Kamloops 866-WXBRIEF (Toll free within Canada) or 866-541-4101 (Toll free within Canada & USA)
WX	604-932-5413 METAR 15-01Z (DT 13-01Z) 4.0NE
SERVICES	
FUEL	JA
S	4
PAD DATA	130' x 130' asphalt, max length 85'
RCR	Opr 16-0130Z± Ltd win maint
COMM	
ATF	tfc 122.7 5NM 5200 ASL
PRO	See VTPC for noise abatement routes.
CAUTION	Aerial tramway aprx 1.6 NM long btn Whistler Mountain and Blackcomb Peak (aprx 4 NM SE A/D) 6206 ASL to 4810 ASL. Obstacle Collision Avoidance System visual warning system within 20 sec range and audible warning "wires" on all VHF freq with 10 sec. For Obstacle Collision Avoidance System info refer to Aeronautical Information Circular 07/08

CANADA FLIGHT SUPPLEMENT / GPH 205

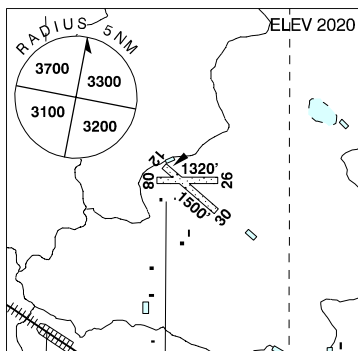
Effective 0901Z 20 November 2008 to 0901Z 15 January 2009

AERODROME/FACILITY DIRECTORY B1025

WHITE CITY (RADOMSKY) SK

CWC1

REF	N50 26 23 W104 18 23 1.5E 11°E UTC-6 Elev 2020' A5006 E-16
OPR	E. Radomsky 306-771-2221 PPR Fax 306-584-7559 Reg
PF	C-1,2,5
FLT PLN	NOTAM FILE CYQR
FIC	Edmonton 866-WXBRIEF (Toll free within Canada) or 866-541-4102 (Toll free within Canada & USA)
RWY DATA	Rwy 08(079°)/26(259°) 1320x75 turf Rwy 12(120°)/30(300°) 1500x75 turf
RCR	Opr No win maint
COMM	
ATF	tfc 123.2 5NM 5100 ASL

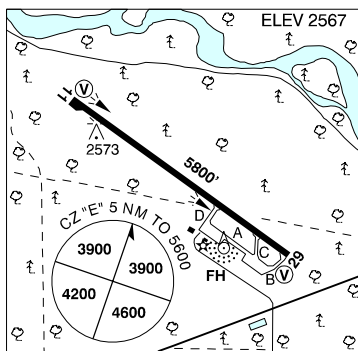


PRO	Rgt hand circuits rwy 26 & 30 (CAR 602.96).
CAUTION	First 500' of rwy 30 undulating. Trees aprx 60 AGL 150' S rwy 08. Expect turbulence rwy 08 & rwy 12 with strong S wind. Twr 2623 ASL (498 AGL) 2.6NM NNW. Class E airspace abv 3000 ASL, see Regina VTPC. Unregistered A/D 0.75NM S.

WHITECOURT AB

CYZU

REF	N54 08 38 W115 47 12 3.5W 19°E UTC-7(6) Elev 2567' A5014 E-15 E-16 LO1 HI3 CAP
OPR	Woodlands County 780-778-8400 Reg Ldg fees
PF	B-1 C-1,2,3,4,5,6
FLT PLN	NOTAM FILE CYZU
FIC	Edmonton 866-WXBRIEF (Toll free within Canada) or 866-541-4102 (Toll free within Canada & USA)
ACC	Edmonton IFR 888-358-7526 or 780-890-8304/8305
WX	METAR dur FSS hrs ops (see COMM) TAF 14-23Z±; issue times: 1410, 1840Z
PIK	ATB, southwest corner, airside access



SERVICES	Call-out fees will be levied.
FUEL	100LL, JA-1 15-02Z Mon-Fri May 1-Sep 30; 15-24Z± Oct 1-Apr 30 O/T 780-778-3080
OIL	All
RWY DATA	Rwy 11(107°)/29(287°) 5800x100 asphalt
RCR	Opr
LIGHTING	11-(TE ME) V1, 29-(TE ME) V1 ARCAL-122.3 type K 05-13Z±
COMM	
RADIO	122.3 (E) 13-05Z± (emerg only 780-778-5333)
RCO	Edmonton rdo 126.7 (FISE)
MF	rdo ltd hrs O/T tfc 122.3 5NM 5600 ASL (CAR 602.98)
PAL	Edmonton Ctr 132.05 135.6 293.7 341.7

CANADA FLIGHT SUPPLEMENT / GPH 205

Effective 0901Z 20 November 2008 to 0901Z 15 January 2009

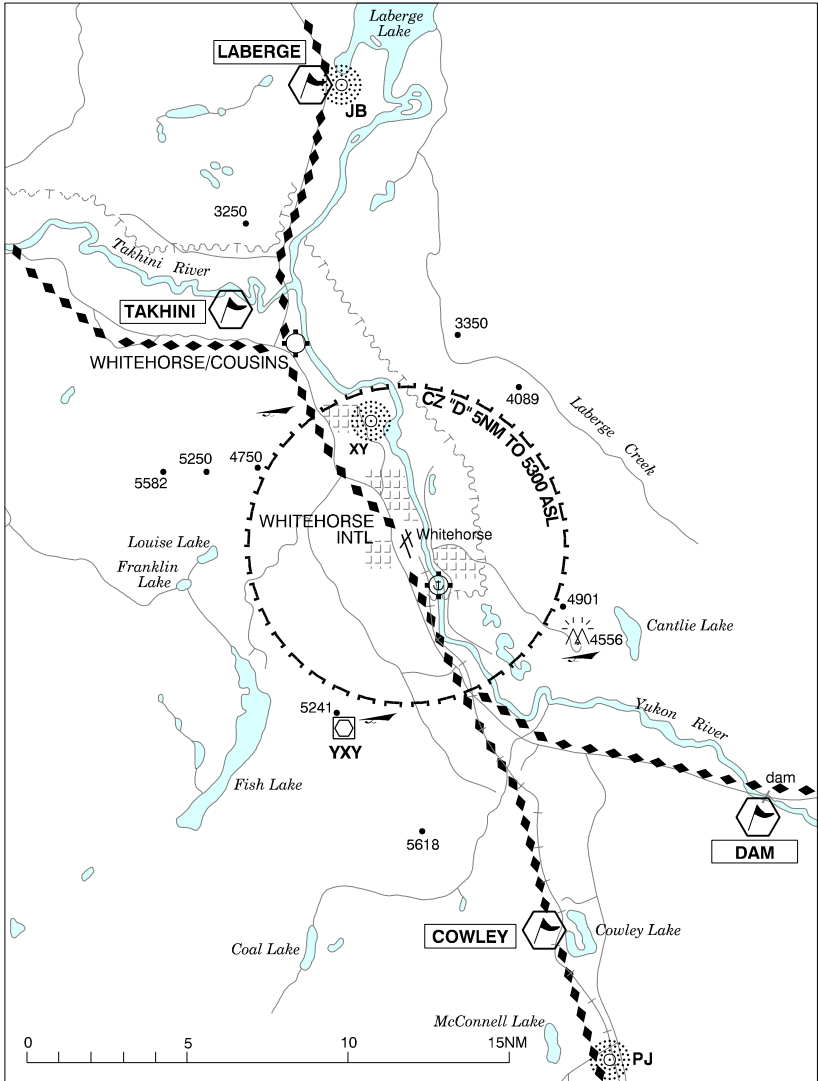
B1026 AERODROME/FACILITY DIRECTORY

WHITECOURT AB (Cont'd)

CYZU

NAV	
NDB	ZU 338 (M) N54 04 38 W115 29 52 273° 10.9NM to A/D McLEOD FH 304 (M) N54 08 22 W115 46 59 315° 0.3NM to A/D
VOR/DME	YZU 112.5 Ch 72 N54 08 44 W115 47 50 (2604') 086° 0.4NM to A/D
PRO	Rgt hand circuits rwy 29 (CAR 602.96).
CAUTION	Deer in vic rwy. Extv heli tng all quads.

WHITEHORSE VFR TERMINAL PROCEDURES CHART



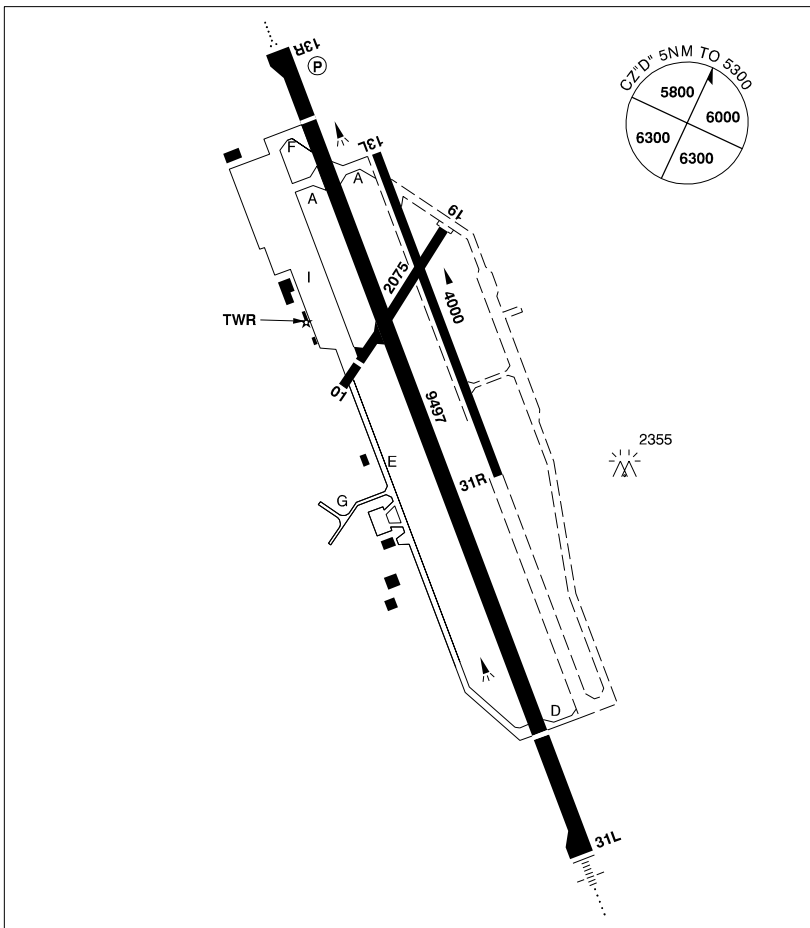
CANADA FLIGHT SUPPLEMENT / GPH 205

Effective 0901Z 20 November 2008 to 0901Z 15 January 2009

AERODROME/FACILITY DIRECTORY B1027

WHITEHORSE INTL YT

CYXY



REF	N60 42 34 W135 04 08 Adj SE 25°E UTC-8(7) Elev 2317' A5028 A5099 D-12 LO5 HI2 CAP
OPR	Govt of Yukon 867-667-8440 Cert
PF	A-1,2,3,6 avbl 15-05Z± dly C-2,3,4,5,6
CUST	AOE/50 (225 with staged off loading) 888-226-7277 H24 2 hrs PNR
FLT PLN	NOTAM FILE CYXY
FIC	Whitehorse 866-WXBRIEF (Toll free within Canada) or 866-541-4107 (Toll free within Canada & USA) or 867-667-8427
ACC	Edmonton IFR 888-358-7526 or 780-890-8304/8305
WX	METAR H24. TAF H24, issue times: 00, 06, 12, 18Z.

CANADA FLIGHT SUPPLEMENT / GPH 205

Effective 0901Z 20 November 2008 to 0901Z 15 January 2009

B1028 AERODROME/FACILITY DIRECTORY

WHITEHORSE INTL YT (Cont'd)

CCYY

SERVICES	Call out chg may be levied for one or more svcs
FUEL	100LL, F-34, JA-1, HPR, IP, ltd hrs (CON North 60 Degree Petro IP JA-1, FSII)
OIL	All
S	1,2,4,5,6
ARFF	5
SUP FL	D & A-ice
JASU	Mil 28 VDC PPR 867-667-2550
PVT ADV	North of 60 Avn Ctr (Shell) 122.6 867-668-2115/667-2622
MIL CON	North 60 Degree Petro Ltd 867-668-2115
RWY DATA	Rwy 13R(134°)/31L(314°) 9497x150 asphalt Thld rwy 13R displ 850' up 0.43% (last 1400' up 0.79%). Thld rwy 31L displ 1400'. Rwy 13L(134°)/31R(314°) 4000x80 asphalt Rwy 01(009°)/19(189°) 2075x75 asphalt Thld 01 displ 275' Ltd to 20,000 lbs E of rwy 13R/31L
TWY	Twy G uncontrolled.
RCR	Opr Ltd hrs, sum hrs DT 14-2230Z Apr 1-Oct 13; win hrs 1430-01Z‡; O/T 2 1/2 hrs PNR for snow removal. Ltd win maint rwy 13L/31R. No win maint rwy 01/19.
LIGHTING	13R-AO(TE HI) P2, 31L-AN(TE HI)
COMM	
RADIO	122.5 126.7 (FISE) (E) (emerg only 867-393-6758)
GND	121.9 15-05Z‡
TWR	118.3 236.6 (E) 15-05Z‡ (emerg only 867-667-8426)
MF	rdo 118.3 05-15Z‡ 5NM 5400 ASL (CAR 602.98)
PAL	Edmonton Ctr 132.1 134.15 290.6
VDF	118.3
NAV	
NDB	XY 302 (M) N60 46 22 W135 06 19 139° 4.0NM to A/D LABERGE JB 236 (L) N60 56 56 W135 08 16 147° 14.5NM to A/D ROBINSON PJ 329 (L) N60 26 22 W134 51 41 314° 17.4NM to A/D KLONDIKE ZXY 353 (L) N60 38 10 W135 00 39 314° 4.7NM to A/D
VOR/DME	YXY 116.6 Ch 113 N60 37 08 W135 08 20 (5285') 358° 5.8NM to A/D R-074 is occasionally subject to severe scalloping
ILS	IXY 109.5 (Rwy 31L)RVR
PRO	Rgt hand circuits rwy 31L & 31R (CAR 602.96).
CAUTION	Flying tng NW edge of CZ at Cousins aprt to 3200 ASL. Tkof rwy 19 not recommended because of rising terrain, subsidence & turbulence. Radiosonde balloon launches fr N60 44 19 W135 05 24 (aprx 1.25NM NW thld rwy 13R on extended rwy ctr line) 1115-1130Z & 2315-2330Z dly. Power line parallel to rwy 13R final apch area, aprx 550' W of extended rwy centreline. Hang/paragliding activity 6NM E, S and W of A/D. Radiosonde balloon launches with an ascent rate of 1000 ft/min btwn the hrs of 1115-1345Z and 2315-0145Z.

WHITEHORSE FIC - RCO

Atlin	126.7 (FISE) (N59 35 W133 43)
Beaver Creek	126.7 (FISE) (N62 03 W140 35)
Dawson	126.7 (FISE) (N63 52 W138 57)
Dease Lake	126.7 (FISE) (N58 26 W130 02)
Faro	126.7 (FISE) (N62 15 W133 19)
Fort Ware	126.7 (FISE) (N57 25 W125 38)
Haines Junction	126.7 (FISE) (N60 50 W137 30)
Mayo	126.7 (FISE) (N63 55 W135 23)
Watson Lake	126.7 (FISE) (N60 05 W128 51)

CANADA FLIGHT SUPPLEMENT / GPH 205

Effective 0901Z 20 November 2008 to 0901Z 15 January 2009

AERODROME/FACILITY DIRECTORY B1029

WHITEHORSE / COUSINS YT

CFP8

REF	N60 48 29 W135 10 38 8NW 25°E UTC-8(7) Elev 2200' A5028 A5099 D-12	
OPR	Govt of Yukon 867-667-5322 or Haines Junction 867-634-2450 Reg	
PF	C-1,2,3,4,5,6	
FLT PLN	NOTAM FILE CYXY	
FIC	Whitehorse 866-WXBRIEF (Toll free within Canada) or 866-541-4107 (Toll free within Canada & USA)	
ACC	Edmonton IFR 888-358-7526 or 780-890-8304/8305	
SERVICES		
S	4	
RWY DATA	Rwy 12(118°)/30(298°) 3200x100 gravel	
RCR	Opr Ltd maint	
COMM		
ATF	tfc 123.2 5NM 5200 ASL	
PRO	Circuit alt 2900 ASL tfc to ctc Whitehorse TWR/RDO 118.3 prior to and on completion of circuit or when departing Cousins area.	

WHITE SADDLE RANCH BC (Heli)

CBD9

REF	N51 44 W124 44 20°E UTC-8(7) Elev 2925' A5004
OPR	White Saddle Air Svcs 250-476-1182 Reg PPR
PF	A-1 B-2 C-5 D-4
FLT PLN	NOTAM FILE CYWL
FIC	Kamloops 866-WXBRIEF (Toll free within Canada) or 866-541-4101 (Toll free within Canada & USA)
SERVICES	PPR for all svcs, tel Opr
FUEL	JA
S	4,5
PAD DATA	100' x 100' turf/gravel
RCR	No win maint
COMM	
ATF	tfc 122.8 5NM 5900 ASL

CANADA FLIGHT SUPPLEMENT / GPH 205

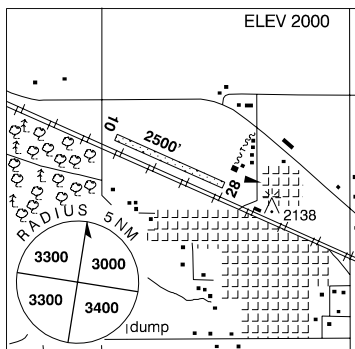
Effective 0901Z 20 November 2008 to 0901Z 15 January 2009

B1030 AERODROME/FACILITY DIRECTORY

WHITEWOOD SK

CKY2

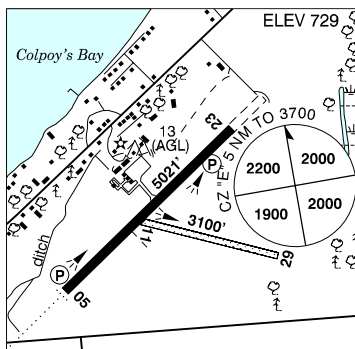
REF	N50 20 W102 16 Adj NW 9°E UTC-6 Elev 2000' A5006 E-16
OPR	Town 306-735-2210 Fax 306-735-2262 Reg
PF	C-1,2,4,5,6
FLT PLN	NOTAM FILE CYQV
FIC	Edmonton 866-WXBRIEF (Toll free within Canada) or 866-541-4102 (Toll free within Canada & USA)
RWY DATA	Rwy 10(101°)/28(281°) 2500x65 turf
RCR	Opr No win maint
COMM	
ATF	tfc 123.2 5NM 5000 ASL



WIARTON ON

CYVV

REF	N44 44 45 W81 06 26 1.5E 10°W UTC-5(4) Elev 729' A5000 F-21 LO4 LO6 HI5 CAP
OPR	AP Joint Municipal Service Board 519-534-0140 After hrs 519-534-1329, 519-372-4709, 519-376-7587 Cert
PF	A-1 C-2,3,4,5,6
CUST	AOE-X 800-842-7647 2 hrs PNR 14-22Z‡ Mon-Fri exc hol, non-permit holders May1-Oct 31.
FLT PLN	NOTAM FILE CYVV
FIC	London 866-WXBRIEF (Toll free within Canada) or 866-541-4104 (Toll free within Canada & USA)
WX	METAR H24. TAF 12-24Z‡, issue times: 12, 14, 20Z (DT 11, 14, 20Z).
SERVICES	Call out chg may be levied after hrs 519-534-1329, 519-372-4709, 519-376-7587/0117
FUEL	100LL, JA-1
OIL	100, 15W50, 20W50
S	2,4,5,6
PVT ADV	122.2
RWY DATA	Rwy 05(054°)/23(234°) 5021x150 asphalt Rwy 11/29 3100x100 gravel
RCR	Opr Rwy 11/29 no win maint.
LIGHTING	05-AD(TE ME) P2, 23-(TE ME) P2 ARCAL-122.2 type K.
COMM	
RCO	London rdo 126.7 (FISE) 296.6
MF	tfc 122.2 5NM 3700 ASL (CAR 602.98)
PAL	Toronto Ctr 132.575 290.6
NAV	
NDB	VV 326 (M) N44 41 53 W81 10 47 055° 3.6NM to A/D
VORTAC	YVV 117.7 Ch 124 N44 44 41 W81 06 20 at A/D
CAUTION	Wildlife frequently on rwy.



CANADA FLIGHT SUPPLEMENT / GPH 205

Effective 0901Z 20 November 2008 to 0901Z 15 January 2009

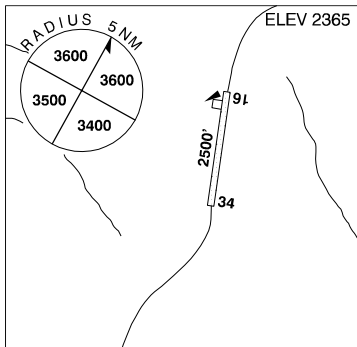
AERODROME/FACILITY DIRECTORY B1031

WILDERMAN AB — See BLACKIE / WILDERMAN FARM

WILEY YT

CAJ2

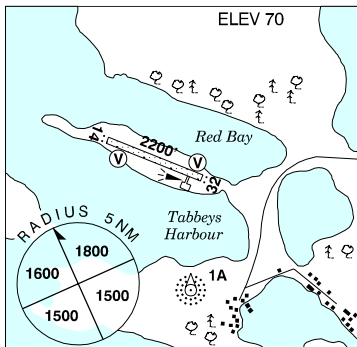
REF	N66 29 28 W136 34 24 12N 29°E UTC-8(7) Elev 2365' A5034 C-9
OPR	Govt of Yukon Territory, Haines Junction 867-634-2450 Mon-Fri or 1-604-628-8922 Reg
PF	D-1,2,3,5
FLT PLN	NOTAM FILE CYXY
FIC	Whitehorse 866-WXBRIEF (Toll free within Canada) or 866-541-4107 (Toll free within Canada & USA)
RWY DATA	Rwy 16(166°)/34(346°) 2500x60 gravel
RCR	Opr No maint
COMM	
ATF	tfc 123.2 5NM 5400 ASL
CAUTION	Rwy forms part of Dempster hwy (mile 244).



WILLIAMS HARBOUR NL

CAA6

REF	N52 34 01 W55 47 05 Adj NW 24°W UTC-4(3) Elev 70' A5020 E-19 LO7 CAP RCAP
OPR	Govt of Newfoundland & Labrador 709-896-7840 Cert
PF	D-1,2
FLT PLN	NOTAM FILE CYAY
FIC	Halifax 866-WXBRIEF or (French) 866-GOMÉTÉO (Toll free within Canada) or 866-541-4106 (Toll free within Canada & USA)
ACC	Gander 709-651-5225 or 888-751-5225. Fit Plns by Fax 709-651-5205 & include phone numbers where pilot can be reached prior to dep.
RWY DATA	Rwy 14(136°)/32(316°) 2200x75 gravel Rwy 32 down 1.09%
RCR	Opr 709-924-0282/0253 Ltd win maint, ctc opr
LIGHTING	14-AS(TE ME) AV 4°, 32-AS(TE ME) AV 4° ARCAL-122.8 type K, key mic 7 times for RIL.
COMM	
ATF	tfc 122.8 5NM 3100 ASL
NAV	
NDB	1A 373 (L) N52 33 32 W55 46 56 013° 0.5NM to A/D Pvt Unmonitored

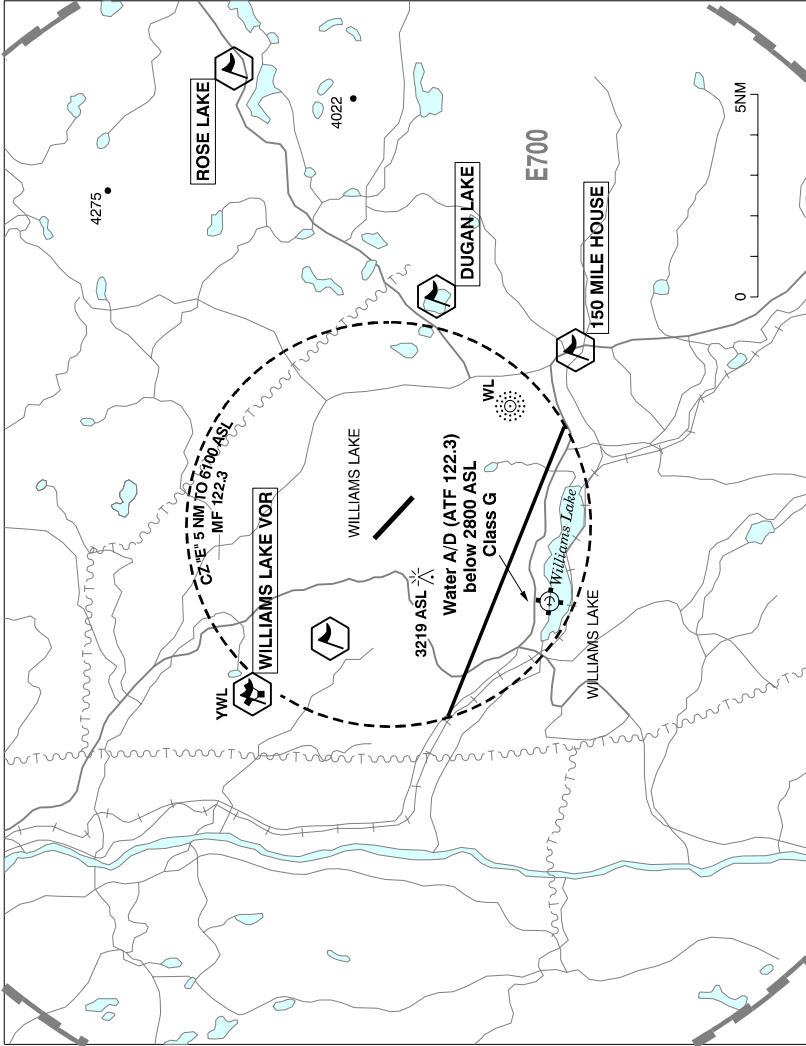


CANADA FLIGHT SUPPLEMENT / GPH 205

Effective 0901Z 20 November 2008 to 0901Z 15 January 2009

B1032 AERODROME/FACILITY DIRECTORY

WILLIAMS LAKE VFR TERMINAL PROCEDURES CHART



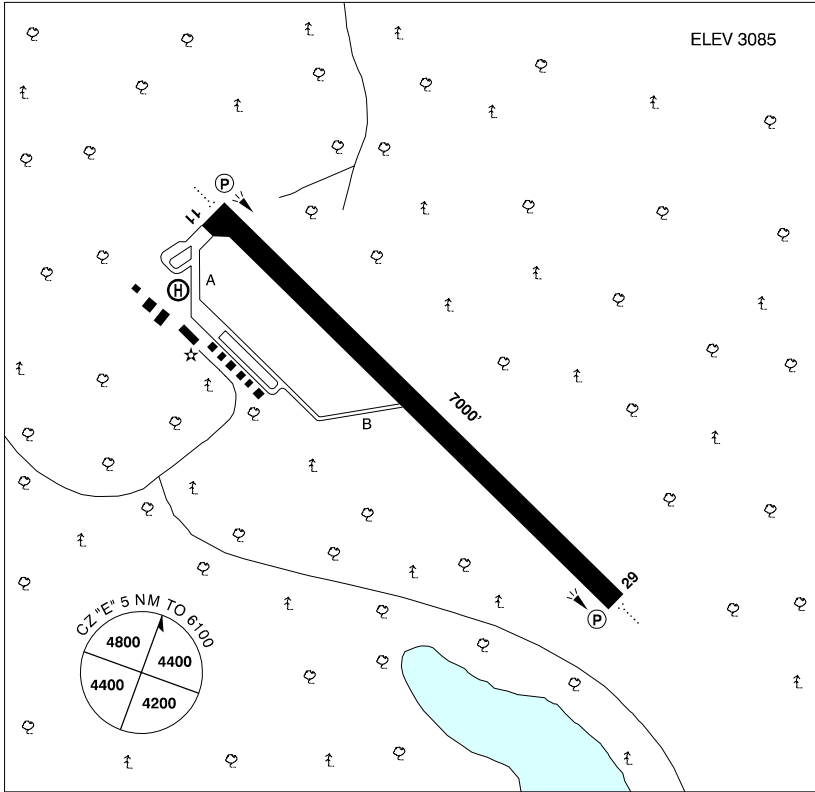
CANADA FLIGHT SUPPLEMENT / GPH 205

Effective 0901Z 20 November 2008 to 0901Z 15 January 2009

AERODROME/FACILITY DIRECTORY B1033

WILLIAMS LAKE BC

CYWL



REF	N52 10 59 W122 03 15 4.2NE 20°E UTC-8(7) Elev 3085' A5004 A5014 E-15 LO2 HI3 CAP
OPR	City 250-989-4713 Cert
PF	A-1,6 C-2,3,4,5
FLT PLN	NOTAM FILE CYWL
FIG	Kamloops 866-WXBRIEF (Toll free within Canada) or 866-541-4101 (Toll free within Canada & USA)
WX	METAR H24. TAF H24, issue times: 01, 07, 13, 19Z.
PIK	ATB E end of aprt, main floor, airside access
SERVICES	Call out chg may be levied for one or more svcs
FUEL	100LL, JA with FSII, SP (self-serve Visa & Mastercard payment only)
OIL	All
S	2,4,5,6
RWY DATA	Rwy 11(114°)/29(294°) 7000x150 asphalt
RCR	FSS Ltd win maint, 15-05Z† Mon-Fri, 1630-0030Z† Sat, 2030-05Z† Sun exc hols. O/T 2 hrs PNR call out chg. Twy B gravel, rstd to 4500 lbs, soft when wet, no win maint. CRFI, PLR/PCN
LIGHTING	11-AO(TE ME) P2, 29-AO(TE ME) P2 O/R FSS. Twy B unlgtd.

CANADA FLIGHT SUPPLEMENT / GPH 205

Effective 0901Z 20 November 2008 to 0901Z 15 January 2009

B1034 AERODROME/FACILITY DIRECTORY

WILLIAMS LAKE BC (Cont'd)

CYWL

COMM	
RADIO	122.3 (E) (emerg only 250-989-4415)
RCO	Pacific rdo 126.7 (FISE)
MF	rdo 122.3 5NM 6100 ASL excluding the area below 2800 ASL depicted on the Williams Lake VTPC (CAR 602.98)
PAL	Vancouver Ctr 134.0 381.4
VDF	122.3
NAV	
VOT	114.8
NDB	WL 385 (M) N52 08 09 W121 58 21 293° 3.6NM to A/D
VORTAC	YWL 113.6 Ch 83 N52 14 13 W122 10 11 (3662') 104° 5.4NM to A/D
PRO	
HELI	Prkg & fuel avbl at helipad NW of apron.
CAUTION	
	Trees to 100 AGL within 400' of rwy edge. Lgtd twr 3219 ASL (197 AGL) aprx 1.4 NM SW A/D.

WILLIAMS LAKE FSS – RCO

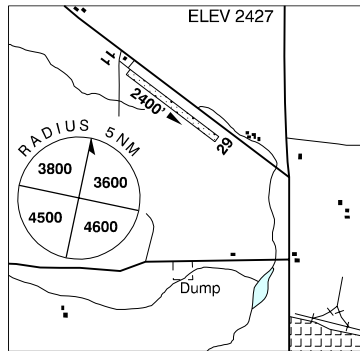
Quesnel 122.2 (RAAS) 14-06Z† (N52 58 W122 29)

Prince George 118.3 (RAAS) 07-14Z† (N53 52 W122 39)

WILLOW BUNCH SK

CKZ2

REF	N49 24 W105 40 1NW 12°E UTC-6 Elev 2427' A5006 E-16
OPR	Willow Bunch A/D Committee 306-473-2450 Reg
PF	C-1,2,4,5
FLT PLN	NOTAM FILE CYQR
FIC	Edmonton 866-WXBRIEF (Toll free within Canada) or 866-541-4102 (Toll free within Canada & USA)
RWY DATA	Rwy 11(115°)/29(295°) 2400x100 turf
RCR	Mr. Claude Dionne 306-473-2214 Ltd win maint
COMM	
ATF	tfc 123.2 5NM 5500 ASL



CANADA FLIGHT SUPPLEMENT / GPH 205

Effective 0901Z 20 November 2008 to 0901Z 15 January 2009

AERODROME/FACILITY DIRECTORY B1035

WINCHESTER ON

CNA8

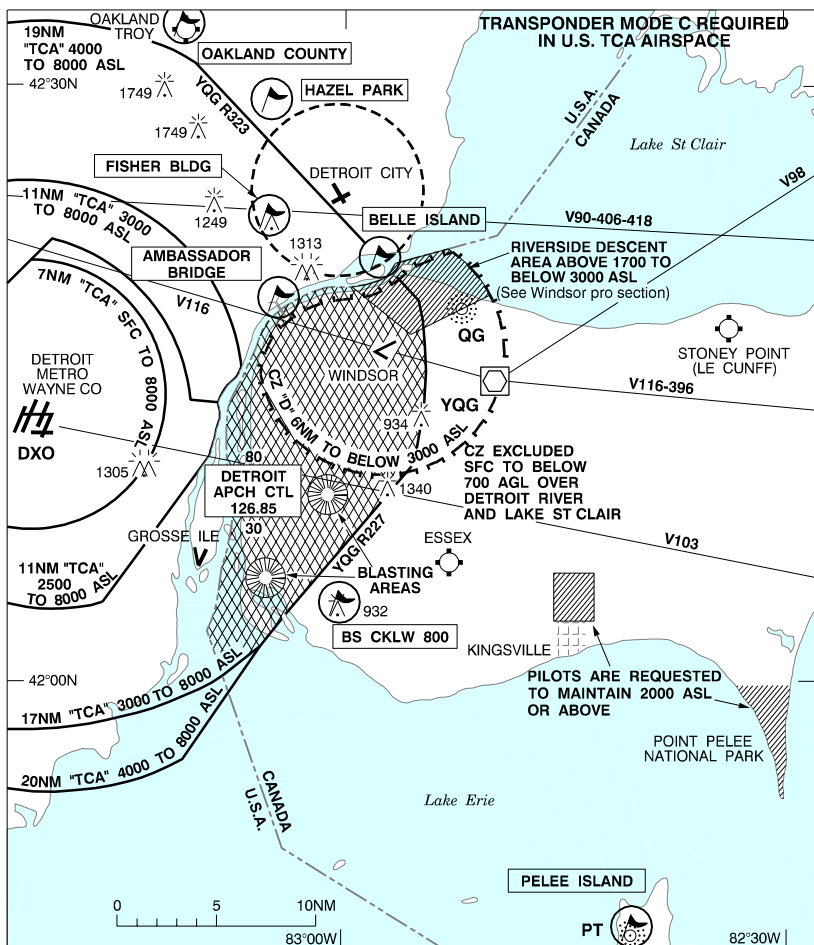
REF	N45 02 44 W75 18 12 3S 14°W UTC-5(4) Elev 250' A5000 A5002 F-21	
OPR	Nicholas 613-225-5037 or 774-0091 Reg Ltd hrs	
PF	B-1 C-2,3,4,5,6	
FLT PLN FIC	(bil) NOTAM FILE CYND Québec 866-GOMÉTÉO or 866-WXBRIEF (Toll free within Canada) or 866-541-4105 (Toll free within Canada & USA)	
SERVICES FUEL OIL S	80, 100LL All 1,2,4,5,6	
RWY DATA RCR	Rwy 07/25 2000x100 turf/asphalt, centre 18x1800 asphalt Thld 07 displ 200'. Thld 25 displ 200'. Rwy 16/34 2460x80 turf Thld 16 displ 300'. Thld 34 displ 480'. Opr Ltd win maint. Rwy 16/34 soft in spring.	
LIGHTING	07-(TE LO), 25-(TE LO) Ngt thld 200' fr end of rwy 07 & 200' fr end of rwy 25, only 1600' lgt. ARCAL-122.8 type J O/R Opr	
COMM ATF	UNICOM ltd hrs O/T tfc 122.8 5NM 3300 ASL excluding the airspace that lies within Ottawa TCA class D airspace.	
PRO	Rgt hand circuits rwy 25 (CAR 602.96).	
CAUTION	20 AGL P-line with orange markings aprx 100' fr thld 34. Fences at thlds 16 & 07.	

CANADA FLIGHT SUPPLEMENT / GPH 205

Effective 0901Z 20 November 2008 to 0901Z 15 January 2009

B1036 AERODROME/FACILITY DIRECTORY

WINDSOR / DETROIT VFR TERMINAL PROCEDURES CHART



Riverside Descent Area: that airspace above 1700 ASL & below 3000 ASL bounded on the S by the extended centre line of Rwy 07/25; on the W by the 310° radial of the YQG VOR; on the N side by the intl bdy and on the E by a 6 mile arc from the apt.

CANADA FLIGHT SUPPLEMENT / GPH 205

Effective 0901Z 20 November 2008 to 0901Z 15 January 2009

AERODROME/FACILITY DIRECTORY B1037

WINDSOR ON

CYQG

REF	N42 16 32 W82 57 20 Adj SE 7°W UTC-5(4) Elev 622' A5000 F-21 LO6 HI5 T2 CAP RCAP OC	
OPR	Your Quick Gateway (Windsor) Inc. 519-969-2430 Cert	
PF	B-1,2,3,6 C-4,5	
CUST	AOE/325 (450 with staged off loading) 888-226-7277	
FLT PLN	NOTAM FILE CYQG Pilots to open/ close VFR flt plan with London rdo 123.375 or by phone. For altn method to file, close & rcv IFR Flt Pln/clnc see PRO	
FIG	London 866-WXBRIEF (Toll free within Canada) or 866-541-4104 (Toll free within Canada & USA)	
WX	METAR H24. TAF H24, issue times: 00, 06, 12 & 18Z.	
SERVICES	Call out chg may be levied for one or more svcs. 100LL, JA-1 HPR	
FUEL	All	
OIL	1,2	
S	5 11-05Z± dly for arr/dep all sked CAT 3, 4 and 5 acft O/T aprt clsd to acft 20 seats & abv, exc for diversions or as an altn A/D without PPR svcs avbl for non sked acft 3 hrs PNR	
ARFF	D-ice	
SUP FL	NC-10A/A1/B/C; DC:2000 AMP, 45kW, 28V; AC:90 KVA, 115/200V, 3 phase, 400 Hz.	
JASU	Great Lakes Flight Centre Inc 122.95 519-969-7052 and 866-817-5266 Fax 519-969-2787; RMG Aero Svcs 123.4 519-966-5501 Fax 519-966-6263; Air-Way Aviation 131.1	
PVT ADV		
RWY DATA	Rwy 07(070°)/25(250°) 9000x200 asphalt Thld 07 displ 902'. Thld 25 displ 1143'. Rwy 12(123°)/30(303°) 5150x150 asphalt Thld 12 displ 570'. Thld 30 displ 325'.	
TWY	Twy E uncontrolled.	
RCR	Opr CRFI/RSC avbl ltd hrs. PLR/PCN	
LIGHTING	07-AD AS(TE HI) P2, 25-AN(TE HI) P2, 12-AD(TE ME) P2, 30-(TE ME) P2 ARCAL-124.7 type K when TWR clsd	
COMM	London rdo 123.375 (FISE) 126.7(bcst)	
RCO	134.5 1145-0330Z±	
ATIS	121.7 1130-0330Z±	
GND	124.7 236.6 (E) 1130-0330Z± (emerg only 519-969-3751)	
TWR	tfc 124.7 0330-1130Z± 6NM shape irregular to below 3000 ASL (CAR 602.98)	
MF	Detroit 126.85 127.5 134.3 348.3 363.2 (E)	
ARR/DEP	Windsor Area-Detroit Apch Ctl 134.3	
VFR ADV		
NAV	111.8	
VOT	QG 353 (L) N42 18 46 W82 52 07 250° 3.8NM to A/D	
NDB	YQG 113.8 Ch 85 (A) N42 14 59 W82 49 44 285° 5.6NM to A/D	
VOR/DME	IQG 110.3 (Rwy 25) LOC reliable only within 30° either side of centreline, RVR avbl from London rdo 123.375 when twr clsd	
ILS		

CANADA FLIGHT SUPPLEMENT / GPH 205

Effective 0901Z 20 November 2008 to 0901Z 15 January 2009

B1038 AERODROME/FACILITY DIRECTORY

WINDSOR ON (Cont'd)

CYQG

PRO	When oprg VFR over Canadian Territory btwn 3000 & 8000 within the hatched area (see VTPC) ctc Detroit apch ctl 126.85. Avoid Riverside descent area unless authorized by ATC. (Acft departing the Windsor area northbound or enroute to Detroit should remain W of Belle Isle or E of the Windsor class E airspace.) IFR tfc inbound Detroit City rwy 33 track 325°M descending from 3000 ASL. To file, close & rcv IFR Flt Pln/clnc when oprg in the Detroit TCA, ctc Detroit Metro Tracon facility 1-800-499-8181. Pilots are requested to avoid flight below 2000 ASL when flying over the Jack Miner Bird Sanctuary (Kingsville ON, N42 04 00 W82 45 00) & over Point Pelee National Park.
CAUTION	Blasting areas may be active Mon-Fri 13-22Z† 1NM radius of N42 09 19 W83 00 21 and N42 05 21 W83 05 06 to 500 AGL.

WINGHAM / RICHARD W. LeVAN ON

CPR7

REF	N43 52 03 W81 17 55 1SE 9°W UTC-5(4) Elev 1075' A5000 F-21 LO6 CAP	
OPR	The Township of North Huron 519-357-7991 Reg	
PF	A-1 B-1 C-2,3,4,5	
CUST	AOE/15 888-226-7277 14-22Z† Mon-Fri exc hols	
FLT PLN	NOTAM FILE CYGD	
FIC	London 866-WXBRIEF (Toll free within Canada) or 866-541-4104 (Toll free within Canada & USA)	
SERVICES	A/D not attended, ctc opr.	
FUEL	100LL, JA	
OIL	15W50	
RWY DATA	Rwy 13/31 4000x75 asphalt	
RCR	Opr Ltd win maint	
LIGHTING	13-(TE ME), 31-(TE ME) ARCAL-123.0 type K	
COMM		
ATF	tfc 123.0 5NM 4000 ASL	
PRO	Rgt hand circuits rwy 13 (CAR 602.96).	
CAUTION	2 silos 80 AGL NE thld rwy 31. Numerous twrs in vic. Wildlife ocsl on rwy. Glider activity in the vicinity of A/D Sat-Sun & hol(s) Apr-Jun & Sep-Nov.	

CANADA FLIGHT SUPPLEMENT / GPH 205

Effective 0901Z 20 November 2008 to 0901Z 15 January 2009

AERODROME/FACILITY DIRECTORY B1039

WINKLER MB

CKZ7

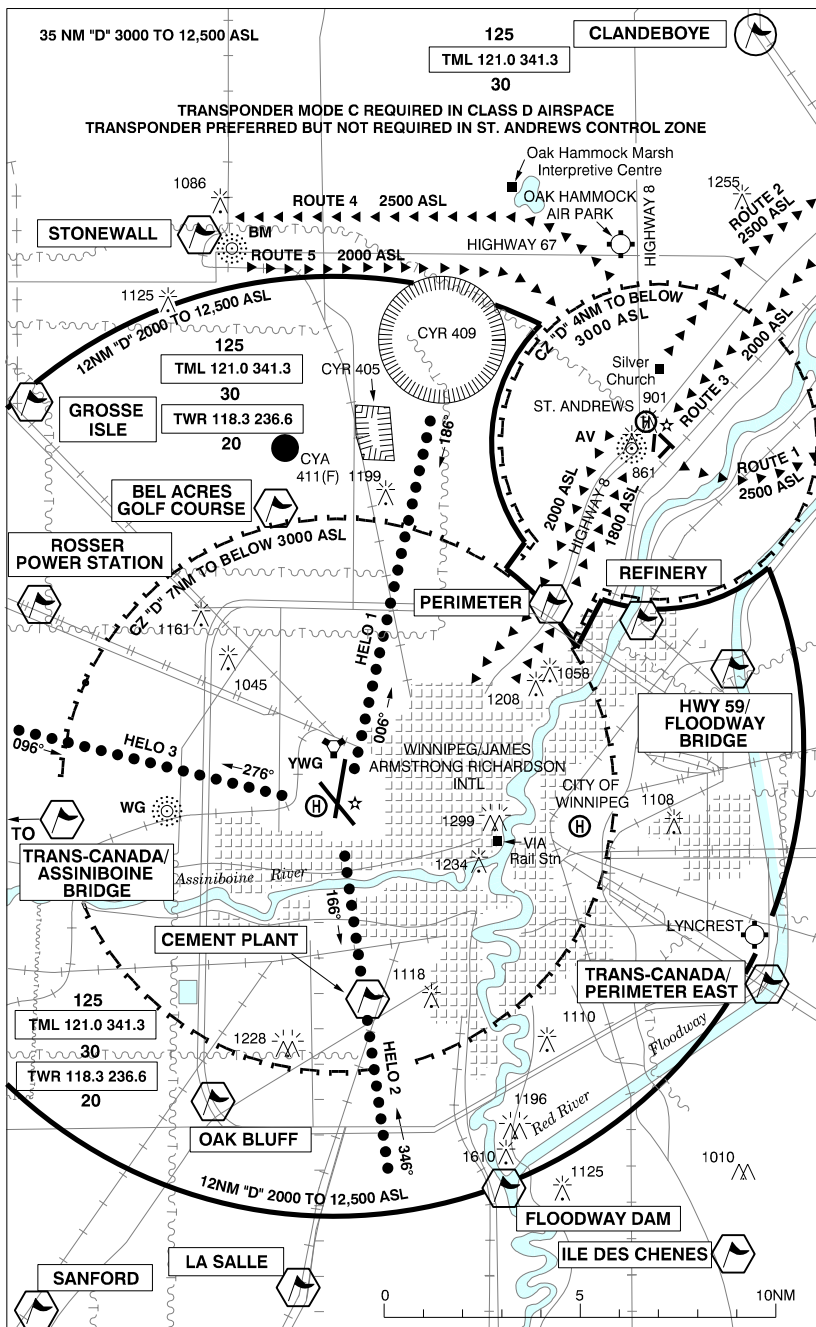
REF	N49 10 01 W97 55 13 1SE 5°E UTC-6(5) Elev 850' A5007 E-16 E-17 LO4	
OPR	City 204-325-9524 Reg	
PF	B-1 C-2,3,4,5	
FLT PLN	NOTAM FILE CYDN FIC Winnipeg 866-WXBRIEF (Toll free within Canada) or 866-541-4103 (Toll free within Canada & USA)	
SERVICES		
FUEL	100LL	
OIL	All	
RWY DATA	Rwy 08(085°)/26(265°) 2900x75 turf/asphalt, centre 28' asphalt Rwy 17(175°)/35(355°) 1540x75 turf	
RCR	Opr Ltd win maint	
LIGHTING	08-(TE LO), 26-(TE LO) SS-SR only 2700' lit.	
COMM		
ATF	UNICOM ltd hrs O/T tfc 122.8 5NM 3900 ASL	
PRO	Rgt hand circuits rwy 08 (CAR 602.96).	

CANADA FLIGHT SUPPLEMENT / GPH 205

Effective 0901Z 20 November 2008 to 0901Z 15 January 2009

B1040 AERODROME/FACILITY DIRECTORY

WINNIPEG / ST. ANDREWS VFR TERMINAL PROCEDURES CHART



CANADA FLIGHT SUPPLEMENT / GPH 205

Effective 0901Z 20 November 2008 to 0901Z 15 January 2009

AERODROME/FACILITY DIRECTORY B1041

WINNIPEG / ST. ANDREWS VFR TERMINAL PROCEDURES CHART (Cont'd)

LOCATION	IDENT	LAT/LONG
BEL ACRES GOLF COURSE	VCGCC	N50° 02.00 W97° 16.50
CEMENT PLANT	VCMNT	N49° 49.00 W97° 12.50
CLANDEBOYE	VCLND	N50° 14.50 W96° 58.50
FLOODWAY DAM	VCFWD	N49° 44.50 W97° 07.50
GROSSE ISLE	VCGRS	N50° 04.00 W97° 26.00
HWY 59/FLOODWAY BRIDGE	VCHWY	N49° 58.00 W96° 59.00
ILE DES CHENES	VCILS	N49° 42.50 W96° 59.50
LA SALLE	VCLSL	N49° 41.50 W97° 16.00
OAK BLUFF	VCOKK	N49° 46.50 W97° 19.50
PERIMETER	VCPER	N49° 59.00 W97° 06.00
REFINERY	VCREF	N49° 58.50 W97° 02.00
ROSSER POWER STATION	VCRSR	N49° 59.50 W97° 25.50
SANFORD	VCSNF	N49° 41.00 W97° 26.50
STONEWALL	VCSTW	N50° 08.00 W97° 19.50
TRANS-CANADA/ASSINIBOINE BRIDGE	VCTCA	N49° 53.00 W97° 31.00
TRANS-CANADA/PERIMETER EAST	VCTCP	N49° 50.00 W96° 57.50

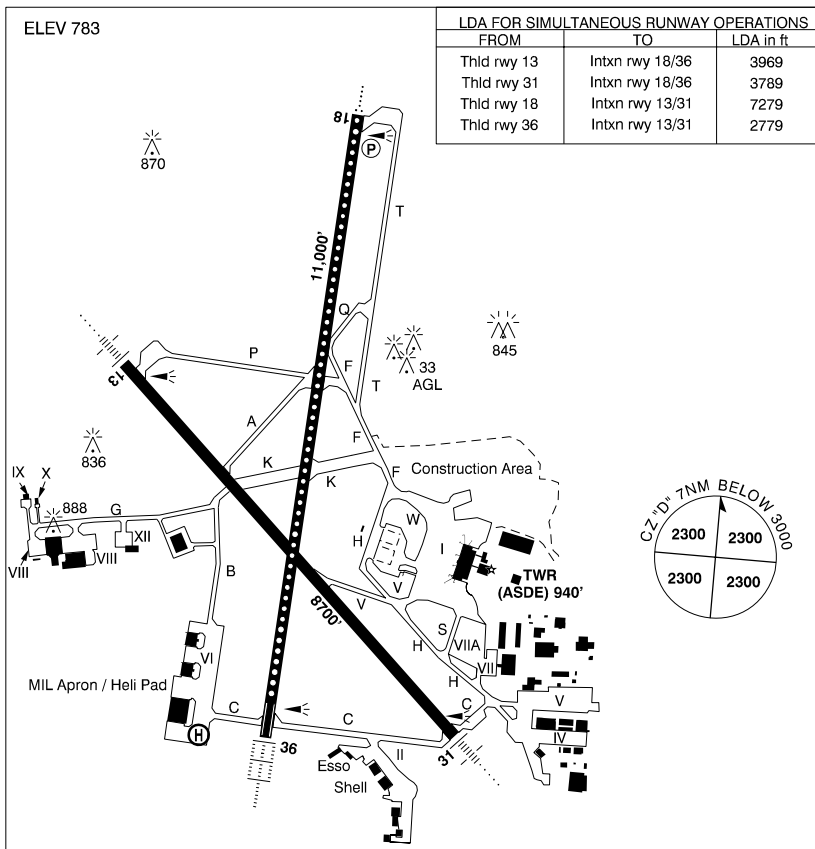
CANADA FLIGHT SUPPLEMENT / GPH 205

Effective 0901Z 20 November 2008 to 0901Z 15 January 2009

B1042 AERODROME/FACILITY DIRECTORY

WINNIPEG / JAMES ARMSTRONG RICHARDSON INTL MB

CYWG



REF	N49 54 36 W97 14 24 Adj W 5°E UTC-6(5) Elev 783' VTA A5007 E-16 E-17 LO4 HI4 T1 CAP OC RCAP
OPR	Winnipeg Airports Authority (DND) 204-987-7834 Cert
PF	A-1,2,3,4,6 C-5 Mil trans quarters extremely ltd. Mil on Base Transport avbl 13-05Z† Mon-Thur, 13-21Z† Fri, 2130-05Z† Sun, unavbl Sat.
CUST	AOE 888-226-7277
FLT PLN	NOTAM FILE CYWG
FIC	Winnipeg 866-WXBRIEF (Toll free within Canada) or 866-541-4103 (Toll free within Canada & USA) or 204-983-8407 (file 30 min prior ETD, see PRO)
ACC	IFR, 204-983-8337 or 888-834-3344 or flt pln by Fax at 204-983-2823 & include phone numbers where pilot can be reached prior to dep.
WX	METAR H24. TAF H24, issue times: 00, 06, 12, 18Z. WD2 204-833-2500 ext 5214 9-24Z† Mon-Fri O/T call page 204-833-2700 (see COMM)
DUAT	Avitat; Shell Aerocentre

CANADA FLIGHT SUPPLEMENT / GPH 205

Effective 0901Z 20 November 2008 to 0901Z 15 January 2009

AERODROME/FACILITY DIRECTORY B1043

WINNIPEG / JAMES ARMSTRONG RICHARDSON INTL MB (Cont'd)

CYWG

SERVICES	
FUEL	100LL, F-34, JA-1, HPR
OIL	All (Mil 123, 128, 133, 148, 156)
S	1,2,3,4,5,6
ARFF	7
SUP FL	LHOX, D & A-ice Mil LOX, Nitrogen avbl PNR via NOVA msg only.
JASU	CE 12, 13, 14, 16, CA2, CEA-1
MIL ADV	All tran acft require PPR thru 17 Wg Ops CSN 319-257-2700 204-833-2700 Toll Free 877-283-6827. PPR valid for ± 1 hr ETA. Tran svcg avbl 14-02Z± Mon-Fri, wknds & hols 14-21Z±. 24 hr PNR wkds, 48 hr PNR for wknds or hol. Non-compliance could result in delays for Mil svcg & prkg or svcg being referred to civ contractor. Mil acft emerg hg space only. Mil svcg rstd to park, start & refuelling with Aircrew Supervision exc for CC130 acft. No tow bar for CP140, CT155 & CT156 acft. Ctc Wg Ops (131.4 or 308.8) 20 min prior to ETA & before entering or exiting Mil ramp.
PVT ADV	Eso Avitav 123.0; Kelly Western Shell 122.85 204-948-9500
RWY DATA	
	Rwy 18(184°)/36(004°) 11,000x200 asphalt
	Rwy 13(134°)/31(314°) 8700x200 asphalt
TWY	Twy A rstd to acft less than 160,000 lbs exc B757 & B767. Twy G uncontrolled.
APRON	Apron I, some prkg posns may be rstd due adjacent acft.
RCR	Opr CRFI, PLR/PCN
LIGHTING	
	13-AN(TE HI), 31-AN(TE HI), 18-AO(TE HI CL) P2, 36-AL(TE HI TDZL)
COMM	
RCO	Winnipeg rdo 122.5 (FISE) 126.7 (FISE) 123.25 (FISE) (E) (emerg only 204-983-8407)
ATIS	114.8 120.2 291.4
CLNC DEL	121.3 283.5 all dep acft to ctc clnc del
GND	121.9 275.8
TWR	118.3 125.4 236.6 325.9 (E) (emerg only 204-983-6705)
ARR	119.5 356.6
DEP	119.9 366.5
VFR ADV	121.0 341.3
MIL	Base Ops 131.4 308.8
PMSV	344.6 (see WX for hrs of ops)
NAV	
VOT	114.8
NDB	WG 248 (M) N49 53 57 W97 20 57 075° 4.2NM to A/D STONEV ZWG 287 (L) N49 59 21 W97 13 11 184° 3.9NM to thld 18 FORKS ZHT 236 (L) N49 50 02 W97 08 39 314° 4.9NM to thld 31 DOWNS ZWN 201 (L) N49 57 50 W97 19 18 134° 4.0NM to thld 13 BOINE ZWW 215 (L) N49 49 48 W97 15 25 004° 4.0NM to thld 36 LA SALLE LF 336 (L) N49 38 33 W97 18 00 004° 16.3NM to A/D BALMORAL BM 375 (L) N50 08 14 W97 18 35 163° 13.9NM to A/D
VORTAC	YWG 115.5 Ch 102 N49 55 40 W97 14 21 (820°) at A/D
ILS	INP 109.5 (Rwy 13) RVR; IWG 109.9 (Rwy 36) RVR; IHV 110.3 (Rwy 31) RVR

CANADA FLIGHT SUPPLEMENT / GPH 205

Effective 0901Z 20 November 2008 to 0901Z 15 January 2009

B1044 AERODROME/FACILITY DIRECTORY

WINNIPEG / JAMES ARMSTRONG RICHARDSON INTL MB (Cont'd)

CYWG

PRO	<p>AIRPORT: Rgt hand circuits rwy 13 & 18 (CAR 602.96). Circuit hgt all rws 2000 ASL. ATS REQUIREMENTS: VFR & IFR Flight Plans, file at least 30 min prior to ETD. All non-flight planned acft intending fit within Winnipeg Class "D" airspace, ctc ATC at least 30 min prior to fit for transponder code. 866-WXBRIEF (866-992-7433) AIRSPACE: Transponder mode "C" rqrd in CZ & TCA. Refer to VTPC for corridor info to St. Andrews aprt. DURING DE-ICING OPERATIONS Acft with wingspan greater than 38m/124 ft must use Bay 2 or 5 (centre bays). See CAP Central De-icing Facility Chart.</p> <ol style="list-style-type: none"> 1. Notify Winnipeg gnd prior to pushback, when de-icing is required; 2. On Apron I hold short of CDF and ctc ICEMAN on 122.925 for instructions to the de-icing pad; 3. Follow instructions & guidance lights to staging & de-icing bays; 4. After receiving final instructions from ICEMAN with brakes set, acft configured and engines at idle, ctc company de-icing opr on assigned freq or via intercom; 5. After de-icing do not move acft, ctc ICEMAN to advise that all eqpt and staff are away from the acft in the safe zone; 6. Follow ICEMAN instructions to designated exit point, holding short of twy "H", ctc gnd 121.9.
NOISE	<p>Maint engine run-ups & lcl flt tng 05-13Z± PPR, ctc Opr. Noise oprg restrictions & noise abatement procedures in effect, see current CAP.</p>
HELI	<p>Use heli routes as depicted on VTPC or as directed by ATC. Arr: Maintain 1500 ASL along routes until commencing final descent. Use extreme caution at apron II due to lgt acft & 10' high security fence S of apron. Air taxi along aprons IV & V proh. Caution: 7' high security fence 50' S of Mil ramp 6. Dep: Maintain routes to 1300 ASL until clear of CZ.</p>
MIL	<p>IFR or VFR tran mil jet acft will conduct a straight-in apch commencing at or outside the final apch fix for the rwy in use, overhead breaks not auth. All VFR Flt Plns within Winnipeg TCA shall include an alt. MIL De-icing All Mil aircrew to arrange de-icing through Wg Ops Ctr. All de-icing of CF and tran acft to be performed on Apron 6, Spots 1, 2, 3, 4, 5, 6, 10, 12, 18, 19 & 20.</p>
CAUTION	<p>Random upper air balloon launches by EC fr VIA Rail stn (N49 53 20 W97 08 00, 4nm SE aprt) dur severe thunderstorm wx. Ocsl para jumps by 435 Sqn 15-21Z± Mon-Fri, May 1-Nov 30. Max alt 3000 ASL. Drop zone 1.5NM radius N49 52 42 W97 29 48 (10NM WSW A/D) at Beaudry Provincial Park. Hi ints lgt oprg dusk-09Z± from hotel roof at N49 49 19 W97 09 10 (vicinity ZHT/FORKS NDB 0.7NM SW extended centerline rwy 31). Beams projecting upward. Hi ints lgt may create tempo effects to vision.</p>

CANADA FLIGHT SUPPLEMENT / GPH 205

Effective 0901Z 20 November 2008 to 0901Z 15 January 2009

AERODROME/FACILITY DIRECTORY B1045

WINNIPEG CENTRE (emerg only 204-983-8338) **CZWG**
118.0 **118.0** (FL 280 & below) **119.7** (FL 290 & FL 350) **120.5** (FL 360 & above) 134.4 **134.4**
283.1 294.5 **294.5** 349.6 **349.6**
Big Trout Lake 135.15 **135.15** (FL 280 & below)
Brandon 132.25 **132.25** 285.4 **285.4**
Broadview **132.9** (FL 290 & above)
Churchill 134.6 **134.6** (FL 280 & below)
Dryden Regional 132.2 **132.2** (FL 280 & below) 245.0 **245.0**
Island Lake 132.825 **132.825** (FL 280 & below)
Kenora **124.0** (FL 360 & above) **225.2** (FL 360 & above)
La Ronge (Barber Field) 126.4 **126.4** (FL 280 & below)
Lloydminster 132.375 **132.375** (FL 280 & below) 227.675 **227.675** (FL 280 & below)
Lynn Lake 135.05 **135.05** (FL 280 & below)
Marathon 134.075 **134.075** (FL 280 & below) 235.0 **235.0** (FL 280 & below)
Ogoki Post 135.475 **135.475** (FL 280 & below)
Prince Albert (Glass Field) 133.9 **133.9** (FL 280 & below)
Red Lake **134.175** (FL 290 to FL 350) 135.325 **135.325** (FL 280 & below)
Regina Intl 123.8 **123.8** 124.3 **124.3** 266.3 **266.3** 283.4 **283.4**
Saskatoon / John G. Diefenbaker Intl **133.1** (FL 290 & above) 134.325
134.325 (FL 280 & below) 299.6 **299.6**
Swift Current 132.8 **132.8** (FL 280 & below) **134.975** (FL 290 & above) 232.3
232.3 (FL 280 & below)
The Pas 135.625 **135.625** (FL 280 & below)
Thompson 133.15 **133.15** (FL 280 & below)
Thunder Bay 132.125 **132.125** (FL 280 & below) **133.25** (FL 360 & above)
135.225 (FL 290 to FL 350) **297.6** (FL 360 & above) **307.125** (FL 290 to FL 350) 387.4
387.4 (FL 280 & below)

WINNIPEG FIC - RCO

Atikokan Muni 123.275 (FISE) (U) (N48 50 W91 35)
Berens River 123.475 (FISE) 126.7 (bcst) (N52 21 W97 02)
Big Trout Lake 123.55 (FISE) DRCO (N53 49 W89 55)
Brandon 126.7 (FISE) (N49 54 W99 57)
Dauphin 123.375 (FISE) (N51 06 W100 04)
Flin Flon 123.275 (FISE) (N54 41 W101 41)
Gillam 123.375 (FISE) (N56 21 W94 42)
Horn 123.55 (FISE) DRCO (N48 49 W87 21)
Island Lake 122.375 (FISE) 126.7 (bcst) (N53 51 W94 39)
Kenora 123.375 (FISE) 126.7 (bcst) (N49 47 W94 22)
Lansdowne House 126.7 (FISE) DRCO (N52 12 W87 56)
Lynn Lake 123.475 (FISE) 126.7 (FISE) (N56 52 W101 06)
Norway House 123.375 (FISE) 126.7 (bcst) (N53 57 W97 51)
Peawanuck 123.275 (FISE) 126.7 (bcst) (N54 59 W85 26)
Pickle Lake 123.475 (FISE) (N51 27 W90 13)
Red Lake 123.55 (FISE) (N51 04 W93 48)
Sioux Lookout 126.0 (FISE) 126.7 (FISE) (N50 06 W91 54)
Swan River 123.45 (FISE) DRCO (N52 07 W101 14)
The Pas 126.7 (FISE) (N53 58 W101 05)
Thompson 123.15 (FISE) 126.7 (FISE) (N55 48 W97 51)
Thunder Bay 122.5 (FISE) 126.7 (FISE) (N48 22 W89 19)
Winnipeg 122.5 (FISE) 126.7 (FISE) 123.25 (FISE) (E) (N49 55 W97 14)

CANADA FLIGHT SUPPLEMENT / GPH 205

Effective 0901Z 20 November 2008 to 0901Z 15 January 2009

B1046 AERODROME/FACILITY DIRECTORY

WINNIPEG (CITY OF WINNIPEG) MB (Heli)

CWG2

REF	N49 54 01 W97 05 44 4°E UTC-6(5) Elev 763' VTA A5007	
OPR	City of Winnipeg 204-986-4869 204-471-7536 Cert PNR	
PF	B-1 C-2,3 D-4,5,6	
FLT PLN	NOTAM FILE CYWG FIC Winnipeg 866-WXBRIEF (Toll free within Canada) or 866-541-4103 (Toll free within Canada & USA)	
PAD DATA	49' dia concrete/asphalt 127' dia concrete/asphalt/grass RCR Opr	
COMM	TWR Winnipeg 118.3	
PRO	Arr/dep btwn 090°-270° fr heli. ATS REQUIREMENTS: VFR & IFR Flight Plans, file at least 30 min prior to ETD. All non-flight planned acft intending flt within Winnipeg Class "D" airspace (Winnipeg CZ & tml) refer to ATS REQUIREMENTS under Winnipeg/James Armstrong Richardson Intl, CYWG, PRO.	

WINNIPEG / LYNCREST MB

CJL5

REF	N49 51 09 W96 58 25 2.8E 4°E UTC-6(5) Elev 775' VTA A5007 E-16 E-17	
OPR	Springfield Flying Club 204-222-0079 Reg	
PF	B-1 C-2,3,4,5,6	
FLT PLN	NOTAM FILE CYWG FIC Winnipeg 866-WXBRIEF (Toll free within Canada) or 866-541-4103 (Toll free within Canada & USA) (file 30 min prior ETD, see PRO) ACC IFR, 204-983-8337 or 888-834-3344 or flt pln by Fax at 204-983-2823 & include phone numbers where pilot can be reached prior to dep.	
SERVICES	FUEL 100LL	
RWY DATA	Rwy 09(092°)/27(272°) 3000x180 turf Rwy 17(169°)/35(349°) 2500x200 turf RCR Ctc opr Ltd win maint. Win rwy width 90' marked with cones.	
COMM	ATF Lyncrest tfc 123.2	
PRO	Circuit hgt 1300 ASL. ATS REQUIREMENTS: VFR & IFR Flight Plans, file at least 30 min prior to ETD. All non-flight planned acft intending flt within Winnipeg Class "D" airspace (Winnipeg CZ & tml) refer to ATS REQUIREMENTS under Winnipeg/James Armstrong Richardson Intl, CYWG, PRO.	
NOISE	Noise abatement pro: avoid flying over houses. Dep path rwy 17 if cond permit.	
CAUTION	Apch path rwy 17 over railway tracks. Apch path rwy 09 over road. P-lines all quad, see VTA. Ultra-light activity in the circuit. Migratory bird activity in vic of A/D.	

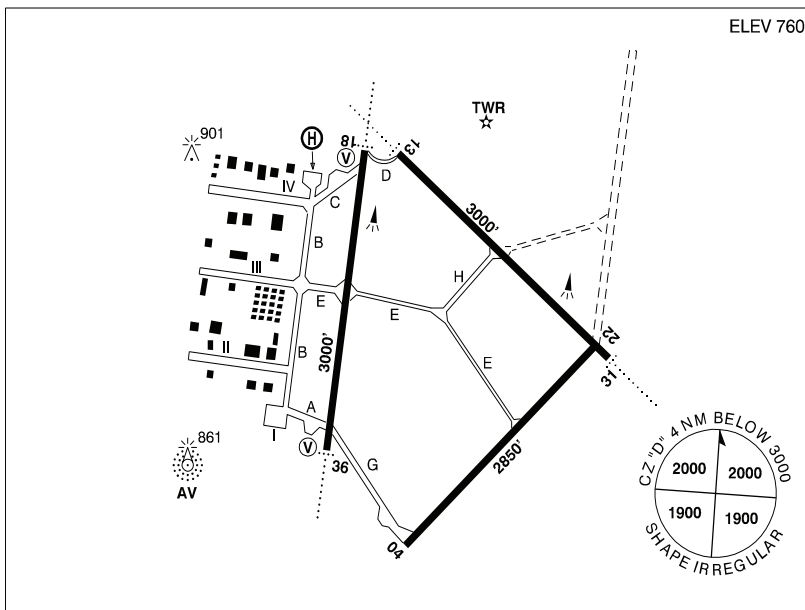
CANADA FLIGHT SUPPLEMENT / GPH 205

Effective 0901Z 20 November 2008 to 0901Z 15 January 2009

AERODROME/FACILITY DIRECTORY B1047

WINNIPEG / ST. ANDREWS MB

CYAV



REF	N50 03 23 W97 01 57 8NNE 4°E UTC-6(5) Elev 760' VTA A5007 E-16 E-17 LO4 HI4 T1 CAP
OPR	St. Andrews Aprt Inc 204-336-3250 Cert
PF	B-1,2,5 D-3,4,6
FLT PLN	NOTAM FILE CYAV
FIC	Winnipeg 866-WXBRIEF (Toll free within Canada) or 866-541-4103 (Toll free within Canada & USA) (file 30 min prior ETD, see PRO)
ACC	IFR, 204-983-8337 or 888-834-3344 or flt pln by Fax at 204-983-2823 & include phone numbers where pilot can be reached prior to dep.
SERVICES	
FUEL	100LL, JA-1 13-01Z Mon-Sun, Apr-Oct exc hols; 14-24Z Mon-Sun, Nov-Mar exc hols; Winnipeg Aviation 204-338-7923, PAGE 204-982-6057 OR 204-228-3259
OIL	All
S	1,2,3,4,5,6
RWY DATA	Rwy 13(129°)/31(309°) 3000x75 asphalt Rwy 18(184°)/36(004°) 3000x75 asphalt Rwy 04(041°)/22(221°) 2850x75 asphalt
RCR	Opr 13-2130Z dly Nov-Mar exc hols; 1200-2030Z± Mon-Fri Apr-Oct, exc hols O/T call out chg. PLR/PCN
LIGHTING	04-(TE ME), 22-(TE ME), 13-AD(TE ME), 31-AD(TE ME), 18-AD(TE ME) V1, 36-AD(TE ME) V1 ARCAL-118.5 type J Opr when TWR clsd. Apch lgts & helipad lgts not avbl on ARCAL.

CANADA FLIGHT SUPPLEMENT / GPH 205

Effective 0901Z 20 November 2008 to 0901Z 15 January 2009

B1048 AERODROME/FACILITY DIRECTORY

WINNIPEG / ST. ANDREWS MB (Cont'd)

CYAV

COMM	<p>ATIS 125.8 14-04Z± GND 121.8 14-04Z± TWR 118.5 120.7 (V) 14-04Z± (emerg only 204-983-0660) ATF tfc 118.5 04-14Z± 4NM below 3000 ASL ARR Winnipeg 119.5 356.6 DEP Winnipeg 119.9 366.5</p>
NAV	<p>NDB AV 275 (L) N50 03 11 W97 02 42 at A/D</p>
PRO	<p>AIRPORT: Rgt hand circuits rwy 04, 13, 18 (CAR 602.96). Circuit hgt 1600 ASL. Special VFR not avbl when TWR clsd.</p> <p>ATS REQUIREMENTS: VFR FLTS intending to enter Winnipeg class "D" & IFR Flight Plans, file at least 30 min prior to ETD. All non-flight planned acft intending flt within Winnipeg Class "D" airspace (Winnipeg CZ & tml) refer to ATS REQUIREMENTS under Winnipeg/James Armstrong Richardson Intl, CYWG, PRO.</p> <p>AIRSPACE: Refer to Winnipeg / St. Andrews VTPC for VFR arr/dep rtes & VFR corridor info to Winnipeg/James Armstrong Richardson Intl. Refer to VTA A1902 for greater chart detail. Transponder preferred but not required for flt within St. Andrews ctl zone.</p>
HELI	<p>Concurrent with safety & twr instructions helicopters are to hover taxi via rwys/twys to other posns on airport at slow speeds</p>
CAUTION	<p>Extv bird & wildlife activity in vic of rwys.</p>

WINTERLAND NL

CCC2

REF	<p>N47 08 13 W55 19 45 2.5SW 21°W UTC-3 1/2 (21/2) Elev 156' A5012 F-22 LO8 CAP</p>	<p>The chart shows a runway labeled '15' with a magnetic heading of 147 degrees and a true heading of 327 degrees. The runway length is 2999x75. The elevation is 156 feet. A 5 NM radius circle is centered on the runway, with 1600 ASL and 2000 ASL markers. The chart also shows various navigational aids and terrain features.</p>
OPR	<p>Govt of Newfoundland & Labrador 709-891-1050 or 709-256-1048 Reg</p>	
PF	<p>D-1,2,3,4,5,6</p>	
CUST	<p>AOE/15 888-226-7277 Apr 1-Sep 30 1115-1930Z (7 days per week) Oct 1-Mar 31 1115-1930Z (Mon-Fri, exc hols)</p>	
FLT PLN	<p>NOTAM FILE CYYT</p>	
FIC	<p>Halifax 866-WXBRIEF or (French) 866-GOMÉTÉO (Toll free within Canada) or 866-541-4106 (Toll free within Canada & USA)</p>	
ACC	<p>Gander 709-651-5225 or 888-751-5225. Flt Plns by Fax 709-651-5205 & include phone numbers where pilot can be reached prior to dep.</p>	
RWY DATA	<p>Rwy 15(147°)/33(327°) 2999x75 asphalt Rwy 15 down 0.44% RCR Dept of Highways 709-891-1050 Ltd win maint PNR</p>	
LIGHTING	<p>15-AS(TE ME), 33-AS(TE ME) ARCAL-122.8 type J</p>	
COMM	<p>ATF tfc 123.2 5NM 3100 ASL</p>	
NAV	<p>NDB MARYSTOWN 7H 234 (L) N47 08 15 W55 19 27 at A/D Pvt Unmonitored</p>	

CANADA FLIGHT SUPPLEMENT / GPH 205

Effective 0901Z 20 November 2008 to 0901Z 15 January 2009

AERODROME/FACILITY DIRECTORY B1049

WINTERS AIRE PARK AB — See INDUS / WINTERS AIRE PARK

WOLLASTON LAKE SK

CZWL

REF	N58 06 25 W103 10 20 10°E UTC-6 Elev 1360' A5024 D-13 LO1 HI2 RCAP	
OPR	Ministry of Hwys & Infrastructure 306-953-3263 Cert	
PF	C-1	
FLT PLN	NOTAM FILE CZWL	
FIG	Edmonton 866-WXBRIEF (Toll free within Canada) or 866-541-4102 (Toll free within Canada & USA)	
RWY DATA	Rwy 16(164°)/34(344°) 3800x75 treated gravel Rwy 16 up 1.1%	
RCR	Area Office 306-953-3262 or Opr Ltd win maint	
LIGHTING	16-(TE LO) AP, 34-(TE LO) AP ARCAL-123.3 type J	
COMM		
DRCO	Edmonton rdo (Wollaston Lake) 123.55 (FISE) (may not be receivable on gnd)	
ATF	tfc 123.3 5NM 4400 ASL	
UNICOM	Call sign 86 122.8 Ltd hrs	
NAV		
NDB	ZWL 268 (M) N58 06 29 W103 10 46 at A/D Unmonitored	
CAUTION	Ocsl pedestrian & animals crossing rwy. Stray dogs on rwy.	

WOODCOCK BC

CBQ8

REF	N55 04 W128 14 3.8NE 22°E UTC-8(7) Elev 537' A5013 E-15 LO1	
OPR	M. Malott/ R. MacKillop 250-849-5513 Reg	
PF	C-1,5	
FLT PLN	NOTAM FILE CYXT	
FIG	Kamloops 866-WXBRIEF (Toll free within Canada) or 866-541-4101 (Toll free within Canada & USA)	
RWY DATA	Rwy 02/20 3350x200 asphalt Thld 20 displ 1050'	
RCR	Opr No regular maint, no win maint. PLR/PCN	
COMM		
ATF	tfc 123.2 5NM 3500 ASL	
CAUTION	Para activity, drop zone adj to rwy. Animals in vic of rwy.	

WOODLANDS MB — See WARREN / WOODLANDS

CANADA FLIGHT SUPPLEMENT / GPH 205

Effective 0901Z 20 November 2008 to 0901Z 15 January 2009

B1050 AERODROME/FACILITY DIRECTORY

WOODSTOCK NB

CCD3

REF	N46 09 W67 33 1.1E 19°W UTC-4(3) Elev 481' A5002 A5003 F-21 F-22	
OPR	Town 506-325-4600/8526 Reg	
PF	B-1 C-2,3,4,5,6	
FLT PLN	NOTAM FILE CYFC	
FIC	Halifax 866-WXBRIEF or (French) 866-GOMÉTÉO (Toll free within Canada) or 866-541-4106 (Toll free within Canada & USA)	
ACC	Moncton 506-867-7176 or 866-480-8200 Flt Plns by Fax 506-867-7180 & include phone numbers where pilot can be reached prior to dep	
SERVICES		
S	1,4,5	
RWY DATA	Rwy 13/31 3000x75 First 1000' rwy 13 turf remaining 2000' chipseal	
RCR	Opr No win maint. Turf may be soft in spring.	
COMM		
ATF	tfc 123.2 5NM 3500 ASL	
CAUTION	Extensive ultra-light activity with 500 AGL circuits. Wildlife may be present.	

WOODSTOCK ON

CPR5

REF	N43 06 35 W80 49 15 2.5W 9°W UTC-5(4) Elev 1040' A5000 F-21	
OPR	K. Beckham/D. Hewitt 519-421-1755/2004 519-539-3303 Reg Aprt not regularly attended	
PF	B-1 C-2,3,4,5,6	
FLT PLN	NOTAM FILE CYXU	
FIC	London 866-WXBRIEF (Toll free within Canada) or 866-541-4104 (Toll free within Canada & USA)	
SERVICES		
FUEL	100LL	
S	5,6	
RWY DATA	Rwy 06/24 3100x100 40' gravel centre turf shoulders	
RCR	Opr No win maint, rwy soft in spring.	
LIGHTING	06-(TE LO), 24-(TE LO) ARCAL-122.9 type J PNR Opr	
COMM		
ATF	UNICOM ltd hrs O/T tfc 122.8 5NM 4000 ASL	

CANADA FLIGHT SUPPLEMENT / GPH 205

Effective 0901Z 20 November 2008 to 0901Z 15 January 2009

AERODROME/FACILITY DIRECTORY B1051

WRIGLEY NT

CYWY

REF	N63 12 34 W123 26 12 27°E UTC-7(6) Elev 489' A5029 D-12 LO5 HI2 CAP	
OPR	Govt of Northwest Territories (Fort Simpson) 867-695-2471 Emerg/Incident rpt ctc Govt of Northwest Territories 877-989-1400 Cert	
PF	C-1,2,4,5	
FLT PLN	NOTAM FILE CYWY	
FIC	North Bay 866-WXBRIEF (Toll free within Canada) or 866-541-4109 (Toll free within Canada & USA)	
CARS	METAR dur CARS hrs of ops (see COMM)	
WX	METAR dur CARS hrs of ops (see COMM)	
RWY DATA	Rwy 11(106°)/29(286°) 3500x100 gravel Rwy 11 up 0.43% Thld 11 displ 500'. RCR O/T 2 hrs PNR, ctc Regional APM 867-695-2491. Call out chg may be levied. PLR/PCN	
LIGHTING	11-AS(TE LO) V1, 29-AS(TE LO) V1 ARCAL-122.1 type J	
COMM	MF aprt rdo ltd hrs O/T tfc 122.1 5NM 3500 ASL (CAR 602.98) APRT RDO 122.1 (V) 15-23Z† Mon-Fri exc hols	
NAV	NDB WY 222 (M) N63 12 46 W123 25 47 at A/D VOR/DME YWY 113.1 Ch 78 N63 11 02 W123 21 44 (506°) 289° 2.8NM to A/D	

WUNNUMIN LAKE ON

CKL3

REF	N52 53 38 W89 17 21 2S 5°W UTC-6(5) Elev 819' A5017 E-17 LO3 CAP	
OPR	Govt of Ontario 807-473-2082 Cert	
PF	C-1,4	
FLT PLN	NOTAM FILE CYXL	
FIC	Winnipeg 866-WXBRIEF (Toll free within Canada) or 866-541-4103 (Toll free within Canada & USA)	
RWY DATA	Rwy 16(163°)/34(343°) 3500x100 gravel RCR APM 807-442-2610 14-23Z† Mon-Fri exc hols. Rwy strength & cond subject to seasonal &/or climatic variations.	
LIGHTING	16-(TE LO)AP, 34-(TE LO)AP ARCAL-123.2 type K for APAPI, rwy lgts low ints only.	
COMM	ATF tfc 123.2 5NM 3900 ASL	

CANADA FLIGHT SUPPLEMENT / GPH 205

Effective 0901Z 20 November 2008 to 0901Z 15 January 2009

B1052 AERODROME/FACILITY DIRECTORY

WYVALE (BOKER FIELD) ON

CNL8

REF	N44 39 19 W79 52 44 2E 11°W UTC-5(4) Elev 705' A5000 F-21	
OPR	H. Boker 705-322-1189 Reg PPR	
FLT PLN	NOTAM FILE CYEE	
FIC	London 866-WXBRIEF (Toll free within Canada) or 866-541-4104 (Toll free within Canada & USA)	
SERVICES		
FUEL	100LL Emerg only	
OIL	Emerg only	
S	4,5	
RWY DATA	Rwy 16/34 1985x60 turf Thld 16 disp 100' Thld 34 disp 100' marked by cones	
RCR	Opr Rwy soft in spring. Ltd win maint.	
COMM		
ATF	tfc 122.7 5NM 3800 ASL of CYEE	
CAUTION	Hydro line aprx 30' high 600' fr thld 16 unmarked. Lgtd tower 1329 ASL (345 AGL) 3.7MN SE of A/D.	

WYNYARD SK

CYYO

REF	N51 48 33 W104 10 09 2.2N 11°E UTC-6 Elev 1740' A5006 E-16 LO2	
OPR	Town 306-554-2123 Reg	
PF	B-1 C-2,4,5	
FLT PLN	NOTAM FILE CYXE	
FIC	Edmonton 866-WXBRIEF (Toll free within Canada) or 866-541-4102 (Toll free within Canada & USA)	
SERVICES	For svcg 306-554-2176/2312	
FUEL	100LL PNR	
S	4,5,6	
RWY DATA	Rwy 09(090°)/27(270°) 3000x75 asphalt	
RCR	D. Grummett 306-554-2312 or R.M. of Big Quill 306-554-2533 O/T 306-544-2176 Ltd win maint	
LIGHTING	09-(TE LO), 27-(TE LO) ARCAL-123.2 type J	
COMM		
ATF	tfc 123.2 5NM 4800 ASL	