

# CANADA FLIGHT SUPPLEMENT / GPH 205

Effective 0901Z 20 November 2008 to 0901Z 15 January 2009

## B892 AERODROME/FACILITY DIRECTORY

### TABER AB

CE5

<b>REF</b>	N49 49 36 W112 11 06 4N 16°E UTC-7(6) Elev 2648' A5005 E-16 LO2	
<b>OPR</b>	Town 403-223-8245/1314 Reg	
<b>PF</b>	B-1 D-2,3,5	
<b>FLT PLN</b>	NOTAM FILE CYQL <b>FIC</b> Edmonton 866-WXBRIEF (Toll free within Canada) or 866-541-4102 (Toll free within Canada & USA) <b>ACC</b> Edmonton IFR 888-358-7526 or 780-890-8304/8305	
<b>SERVICES</b>	<b>S</b> 4,5,6	
<b>RWY DATA</b>	Rwy 05/23 3000x75 asphalt Rwy 13/31 2000x75 asphalt <b>RCR</b> Opr Ltd maint	
<b>LIGHTING</b>	05-(TE ME), 23-(TE ME) ARCAL-122.8 type K	
<b>COMM</b>	<b>ATF</b> UNICOM ltd hrs O/T ftc 122.8 5NM 5700 ASL	
<b>NAV</b>	<b>NDB</b> 3Z 388 (L) N49 49 33 W112 10 41 262° at A/D Pvt Unmonitored <b>DME</b> 3Z 111.0 Ch 47 N49 49 33 W112 10 41 at A/D Pvt Unmonitored	

### TABER (HEALTH CENTRE) AB (Heli)

CTB7

<b>REF</b>	N49 47 08 W112 09 58 16°E UTC-7(6) Elev 2669' A5005 RCAP	
<b>OPR</b>	Chinook Regional Health Authority 403-223-7211 Cert PPR	
<b>FLT PLN</b>	NOTAM FILE CYQL <b>FIC</b> Edmonton 866-WXBRIEF (Toll free within Canada) or 866-541-4102 (Toll free within Canada & USA) <b>ACC</b> Edmonton IFR 888-358-7526 or 780-890-8304/8305	
<b>PAD DATA</b>	31' x 31' Concrete	
<b>LIGHTING</b>	RY(LO) PNR (Lighted windsock NW corner hosp bldg)	
<b>COMM</b>	<b>ATF</b> UNICOM ltd hrs O/T ftc 122.8 5NM centred on Taber A/D 2.6NM NW 5700 ASL	
<b>PRO</b>	One arr/dep path SW arc 201° thru 291° fr heli 8% slope; one arr/dep path NW arc 291° thru 021° fr heli, slope 16%, to be used by multi-engine acft only.	
<b>CAUTION</b>	80' stacks aprx 130' NE pad.	

# CANADA FLIGHT SUPPLEMENT / GPH 205

Effective 0901Z 20 November 2008 to 0901Z 15 January 2009

AERODROME/FACILITY DIRECTORY B893

## TADOULE LAKE MB

CYBQ

<b>REF</b>	N58 42 22 W98 30 44 0.6SW 5°E UTC-6(5) Elev 923' A5024 D-13 D-14 LO3 RCAP	
<b>OPR</b>	Govt of Manitoba 204-677-6722 Cert	
<b>PF</b>	A-1 C-4 Tml bldg opr 13-18Z†, 19-2115Z† Mon-Fri, clsd Sat, Sun & hols	
<b>FLT PLN</b>	NOTAM FILE CYBQ	
<b>FIC</b>	Winnipeg 866-WXBRIEF (Toll free within Canada) or 866-541-4103 (Toll free within Canada & USA)	
<b>RWY DATA</b>	Rwy 07(067°)/25(247°) 3200x100 crushed rock Rwy 25 up 1.59%	
<b>RCR</b>	APM 204-684-2034 13-18Z†, 19-2115Z† Mon-Fri exc holsO/T 204-684-2571	
<b>LIGHTING</b>	07-(TE LO), 25-(TE LO) ARCAL-122.8 type J (see CAUTION)	
<b>COMM</b>		
<b>ATF</b>	UNICOM ltd hrs O/T tfc 122.8 5NM 4000 ASL	
<b>NAV</b>		
<b>NDB</b>	Q1 389 (L) N58 42 35 W98 30 18 at A/D Pvt	
<b>CAUTION</b>	Rwy edge lgt installed higher than std (aprx 27 inches high loc 5' outside rwy edge).	

## TAKLA NARROWS BC

CBD5

<b>REF</b>	N55 09 52 W125 42 15 adj 24°E UTC-8(7) Elev 2380 aprx A5013 E-15
<b>OPR</b>	Takla Rainbow Lodges Ltd 250-483-3027 Reg
<b>PF</b>	C-1,2,3,5
<b>FLT PLN</b>	NOTAM file CYYD
<b>FIC</b>	Kamloops 866-WXBRIEF (Toll free within Canada) or 866-541-4101 (Toll free within Canada & USA)
<b>SERVICES</b>	
<b>FUEL</b>	100(D), JB (D)
<b>RWY DATA</b>	Rwy 12/30 2000'x75' gravel. Rwy 30 up 1%
<b>PAD DATA</b>	16' x 16' grass adj lodge
<b>RCR</b>	Opr Ltd win maint
<b>COMM</b>	
<b>ATF</b>	Unicom ltd hrs O/T tfc 122.8 5nm 5400 ASL
<b>CAUTION</b>	Brush adj rwy. Sfc unprepared outside rwy edge. Steep embankment 25' hi along NE side

# CANADA FLIGHT SUPPLEMENT / GPH 205

Effective 0901Z 20 November 2008 to 0901Z 15 January 2009

B894 AERODROME/FACILITY DIRECTORY

## TALOYOAK NU

CYYH

<b>REF</b>	N69 32 48 W93 34 36 0.75W 15°W GV79°E UTC-7(6) Elev 92' A5043 C-11 LO5 HI1 HI2 CAP	
<b>OPR</b>	Govt of Nunavut 867-983-4184/4014 Cert	
<b>PF</b>	C-1,2,4,5	
<b>FLT PLN</b>	NOTAM FILE CYYH	
<b>FIC</b>	North Bay 866-WXBRIEF (Toll free within Canada) or 866-541-4109 (Toll free within Canada & USA)	
<b>CARS</b>	867-561-6241 Lcl wx only, other wx O/R.	
<b>WX</b>	METAR H24. TAF H24, issue times: 00, 06, 12, 18Z.	
<b>SERVICES</b>	Call out chg may be levied outside oprg hrs.	
<b>FUEL</b>	JA-1 1530-01Z± Mon-Sat exc hols PNR ctc 867-561-5571/5500/6241 or 867-983-7259/7285. Credit cards not accepted. Credit by prior arng only, ctc 867-645-5169, allow 7 working days.	
<b>OIL</b>	All	
<b>RWY DATA</b>	Rwy 15T(151°T)/33T(331°T) 4020x100 gravel Rwy 33T up 0.87%	
<b>RCR</b>	CARS 867-561-6341 A/D maint avbl 15-24Z± Mon-Fri exc hols O/T PNR & call-out chg rqrd. PLR/PCN	
<b>LIGHTING</b>	15T-AS(TE ME) AP, 33T-AS(TE ME) AP ARCAL-122.1 opr if CARS unattended; key mic 3 times in 5 sec for rwy 33T lghts & APAPI; 5 times in 5 sec for rwy 15T lghts & APAPI. RIL not avbl on ARCAL. (See CAUTION).	
<b>COMM</b>		
<b>MF</b>	aprt rdo 122.1 5NM 3100 ASL (CAR 602.98)	
<b>APRT RDO</b>	122.1 (V)	
<b>NAV</b>		
<b>NDB</b>	YYH 290 (M) N69 32 29 W93 31 32 285°T 1.1NM to A/D Unmonitored	
<b>CAUTION</b>	Extv migratory bird activity May-Oct. Rwy edge lgt installed higher than std (aprx 27 inches high loc 5' outside rwy edge).	

## TALTHEILEI NARROWS NT

CFA7

<b>REF</b>	N62 35 50 W111 32 28 20°E GV132°E UTC-7(6) Elev 617' A5030 D-13 LO5 RCAP	
<b>OPR</b>	Plummers Great Slave Lake Lodge 204-774-5775 Reg PPR	
<b>FLT PLN</b>	NOTAM FILE CYZF	
<b>FIC</b>	North Bay 866-WXBRIEF (Toll free within Canada) or 866-541-4109 (Toll free within Canada & USA)	
<b>ACC</b>	Edmonton IFR 888-358-7526 or 780-890-8304/8305	
<b>RWY DATA</b>	Rwy 05T(049°T)/23T(229°T) 5748x120 gravel Rwy 23T up 1.36% Summer months only PNR	

# CANADA FLIGHT SUPPLEMENT / GPH 205

Effective 0901Z 20 November 2008 to 0901Z 15 January 2009

AERODROME/FACILITY DIRECTORY B895

## TALTHEILEI NARROWS NT (Cont'd)

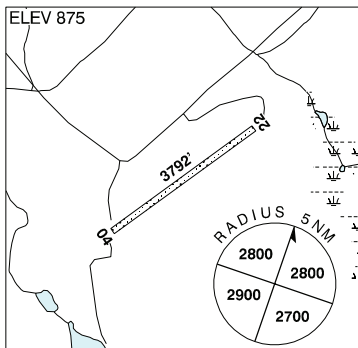
CFA7

<b>COMM</b>	
<b>ATF</b>	UNICOM (AU) ltd hrs O/T tfc 122.8 Prior to dep, call opr to confirm Altimeter Setting avbl on arr. 5NM 3600 ASL
<b>NAV</b>	
<b>NDB</b>	A1 264 (L) N62 35 41 W111 31 08 291°T 0.6NM to A/D Pvt Summer only
<b>CAUTION</b>	Wildlife in vic of rwy.

## TALTSON RIVER NT

CFW5

<b>REF</b>	N60 23 39 W111 20 50 19°E GV130°E UTC-7 Elev 875' A5023 D-13
<b>OPR</b>	Northwest Territories Power Corp 867-872-7100 Reg PPR
<b>FLT PLN</b>	NOTAM FILE CYSM
<b>FIC</b>	North Bay 866-WXBRIEF (Toll free within Canada) or 866-541-4109 (Toll free within Canada & USA)
<b>RWY DATA</b>	Rwy 04(035°)/22(215°) 3792x50 sand
<b>RCR</b>	Opr Ltd win maint. Soft in spring.
<b>COMM</b>	
<b>ATF</b>	tfc 123.2 5NM 3900 ASL



## TANQUARY FIORD NU

CJQ6

<b>REF</b>	N81 24 34 W76 52 54 Adj NE 75°W GV2°W UTC-5(4) Elev 50' aprx A5050 A-5	ELEV 50 APRX
<b>OPR</b>	Parks Canada 867-975-4673 Reg PPR	
<b>FLT PLN</b>	NOTAM FILE CYRB	
<b>FIC</b>	North Bay 866-WXBRIEF (Toll free within Canada) or 866-541-4109 (Toll free within Canada & USA)	
<b>SERVICES</b>		
<b>FUEL</b>	JB(D) prior arrng only ctc opr, emerg only.	
<b>RWY DATA</b>	Rwy 03T(025°T)/21T(205°T) 3700x120 gravel	
<b>RCR</b>	Opr Rwy strength & cond subject to seasonal &/or climatic variations aprx Jun 1-Aug 31. No maint.	
<b>COMM</b>		
<b>ATF</b>	tfc 123.2 5NM 3100 ASL	
<b>A/G</b>	4472.5 4960.0 4441.0	
<b>PRO</b>	Only opr with considerable experience in area should plan on using this A/D due to terrain (mntns all quads) & variable lcl cond.	

# CANADA FLIGHT SUPPLEMENT / GPH 205

Effective 0901Z 20 November 2008 to 0901Z 15 January 2009

B896 AERODROME/FACILITY DIRECTORY

## TASIUAJQ QC

CYTQ

<b>REF</b>	N58 40 04 W69 57 21 1.5SW 27°W UTC-5(4) Elev 122' A5027 D-15 LO5 CAP	
<b>OPR</b>	Administration Régionale Kativik 819-964-2968 14-22Z† Mon-Fri O/T 819-964-3434 Ext 154 Fax 819-964-2462 Cert	
<b>PF</b>	A-1 C-4,5	
<b>FLT PLN</b>	NOTAM FILE CYVP	
<b>FIC</b>	(bil) Québec 866-GOMÉTÉO or 866-WXBRIEF (Toll free within Canada) or 866-541-4105 (Toll free within Canada & USA)	
<b>ACC</b>	Montréal 800-633-1353	
<b>CARS</b>	819-633-5142 ltd hrs (see COMM)	
<b>WX</b>	METAR dur CARS hrs. TAF 15-22Z†, issue times: 15, 20Z (DT 14Z).	
<b>RWY DATA</b>	Rwy 06(057°)/24(237°) 3519x100 gravel Rwy 06 down 0.7% first 2390'	
<b>RCR</b>	Opr	
<b>LIGHTING</b>	06-AS(TE ME), 24-AS(TE ME) ARCAL-122.1 type J	
<b>COMM</b>		
<b>MF/ATF</b>	apt rdo (English only) ltd hrs O/T tfc 122.1 5NM 3200 ASL (CAR 602.98)	
<b>APRT RDO</b>	122.1 (V) 1230-2230Z†	
<b>NAV</b>		
<b>NDB</b>	YTQ 212 (L) N58 40 16 W69 56 47 at A/D Unmonitored when CARS clsd	
<b>CAUTION</b>	Unlgtd P-line 40 AGL (161 ASL) 500' NE thld 24.	

## TEEPEE AB

CFM6

<b>REF</b>	N56 27 34 W114 07 09 19°E UTC-7(6) Elev 2565' aprx A5023 D-13 E-15 E-16	
<b>OPR</b>	Alberta Sustainable Resource Development Forestry Division, Slave Lake 780-849-7400 Reg	
<b>FLT PLN</b>	NOTAM FILE CYPE	
<b>FIC</b>	Edmonton 866-WXBRIEF (Toll free within Canada) or 866-541-4102 (Toll free within Canada & USA)	
<b>ACC</b>	Edmonton IFR 888-358-7526 or 780-890-8304/8305	
<b>RWY DATA</b>	Rwy 11/29 2400x150 turf	
<b>RCR</b>	Opr Ltd maint. No win maint	
<b>COMM</b>		
<b>ATF</b>	tfc 123.2 5NM 5600 ASL	

# CANADA FLIGHT SUPPLEMENT / GPH 205

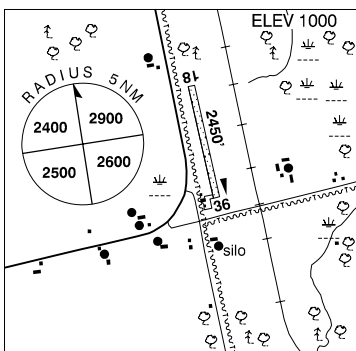
Effective 0901Z 20 November 2008 to 0901Z 15 January 2009

AERODROME/FACILITY DIRECTORY B897

## TEESWATER (THOMPSON FIELD) ON

CPC6

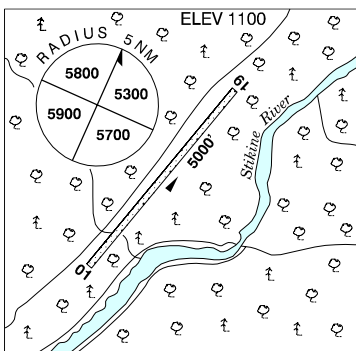
<b>REF</b>	N43 56 54 W81 16 19 2.5S 9°W UTC-5(4) Elev 1000' A5000 F-21
<b>OPR</b>	D. Thompson 519-392-6988 Reg
<b>PF</b>	B-1 C-2,3,4,5,6
<b>FLT PLN</b>	NOTAM FILE CYZR
<b>FIC</b>	London 866-WXBRIEF (Toll free within Canada) or 866-541-4104 (Toll free within Canada & USA)
<b>SERVICES</b>	<b>S</b> 4,5,6
<b>RWY DATA</b>	Rwy 18(177°)/36(357°) 2450x60 turf
<b>RCR</b>	Opr Ltd win maint. Soft in spring.
<b>COMM</b>	<b>ATF</b> tfc 122.8 5NM 4000 ASL
<b>CAUTION</b>	Hydro wires 600' S of thld 36. Bush 500' N of thld 18.



## TELEGRAPH CREEK BC

CBM5

<b>REF</b>	N57 55 W131 07 24°E UTC-8(7) Elev 1100' A5021 D-12
<b>OPR</b>	Min of Forests, NW Fire Centre 250-847-6600 Reg
<b>PF</b>	C-1,2,5
<b>FLT PLN</b>	NOTAM FILE CYDL
<b>FIC</b>	Whitehorse 866-WXBRIEF (Toll free within Canada) or 866-541-4107 (Toll free within Canada & USA)
<b>RWY DATA</b>	Rwy 01/19 5000x40 gravel/turf
<b>RCR</b>	Opr or Northern Thunderbird Air 250-847-4400 Jun-Oct. No win maint, possible soft spots 1500' fr S end.
<b>COMM</b>	<b>ATF</b> tfc 123.2 5NM 4100 ASL
<b>CAUTION</b>	No prepared rwy shoulders. Gnd drops off along edges. Brush along edges.

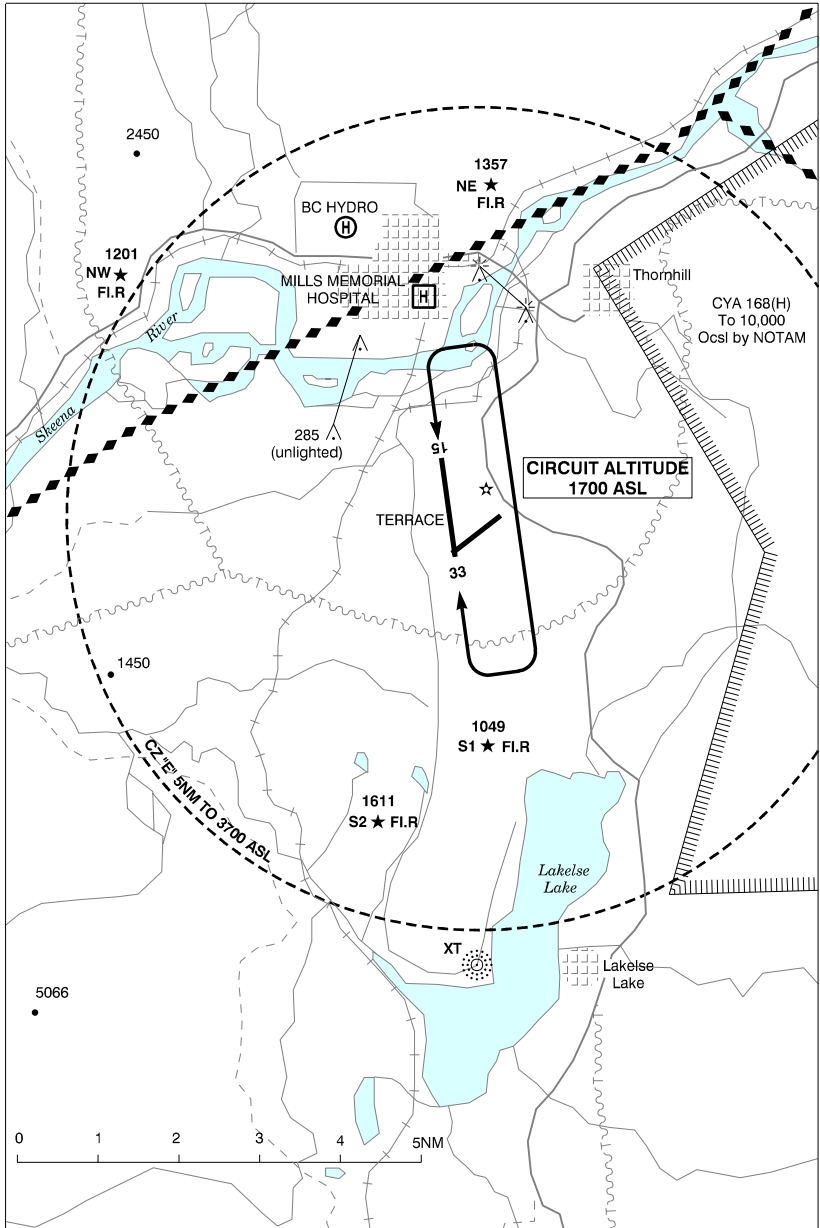


# CANADA FLIGHT SUPPLEMENT / GPH 205

Effective 0901Z 20 November 2008 to 0901Z 15 January 2009

B898 AERODROME/FACILITY DIRECTORY

## TERRACE VFR TERMINAL PROCEDURES CHART - NIGHT CIRCUIT PROCEDURE



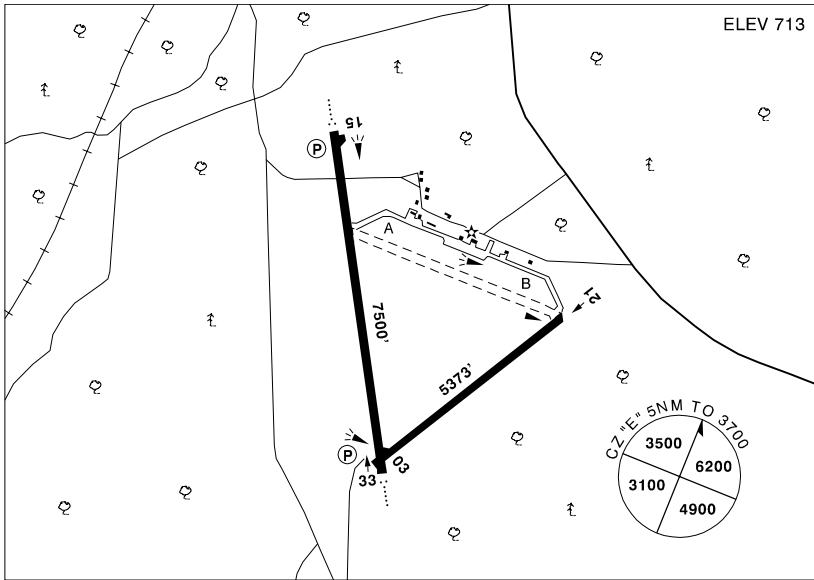
# CANADA FLIGHT SUPPLEMENT / GPH 205

Effective 0901Z 20 November 2008 to 0901Z 15 January 2009

AERODROME/FACILITY DIRECTORY B899

**TERRACE BC**

**CYXT**



<b>REF</b>	N54 28 07 W128 34 34 3S 22°E UTC-8(7) Elev 713' A5013 E-15 LO1 HI3 CAP RCAP
<b>OPR</b>	Terrace-Kitimat Aprt Society 250-635-2659 Cert
<b>PF</b>	A-1,2,3,6 C-4,5
<b>FLT PLN</b>	NOTAM FILE CYXT
<b>FIC</b>	Kamloops 866-WXBRIEF (Toll free within Canada) or 866-541-4101 (Toll free within Canada & USA)
<b>WX</b>	METAR H24. TAF H24, issue times: 01, 07, 13, 19Z.
<b>PIK</b>	ATB 2nd floor room 301 & 302, airside access
<b>SERVICES</b>	
<b>FUEL</b>	100LL, JA-1 16-01Z±, 250-638-1564, O/T call out chg may be levied.
<b>OIL</b>	All
<b>S</b>	1,2
<b>RWY DATA</b>	Rwy 15(150°)/33(330°) 7500x150 asphalt Rwy 03(030°)/21(210°) 5373x150 asphalt
<b>RCR</b>	Opr Ltd hrs CRFI, PLR/PCN win maint 16-05Z Sun thru Fri; 16-0030Z Sat. O/T 2 hrs PNR, cost recovery. No win maint rwy 03/21.
<b>LIGHTING</b>	15-AO(TE ME) P2, 33-AO(TE ME) P2 3.5° PAPI rwy 33 OCL to 2NM
<b>COMM</b>	
<b>RADIO</b>	122.0 239.8 (E) (emerg only 250-635-2110)
<b>RCO</b>	Pacific rdo 126.7 (FISE)
<b>MF</b>	rdo 122.0 5NM 3700 ASL (CAR 602.98)
<b>PAL</b>	Vancouver Ctr 128.4 269.1



# CANADA FLIGHT SUPPLEMENT / GPH 205

Effective 0901Z 20 November 2008 to 0901Z 15 January 2009

B900 AERODROME/FACILITY DIRECTORY

## TERRACE BC (Cont'd)

CYXT

<b>NAV</b>	<p><b>VOT</b> 111.8</p> <p><b>NDB</b> XT 332 (M) N54 22 26 W128 34 59 336° 5.1NM to A/D KITIMAT ZKI 203 (M) N54 03 15 W128 40 13 346° 25.3NM to A/D</p> <p><b>DME</b> IXT 110.1 Ch 38 N54 27 39 W128 35 16 at A/D</p> <p><b>ILS</b> IXT 110.1 (Rwy 33)</p>
<b>PRO</b>	Rgt hand circuits rwy 33 (CAR 602.96). Ngt circuit pro, see VTPC.
<b>CAUTION</b>	Ngt ops not recommended unless all hazard bcns are oprg. Recommend that only pilots familiar with the local area use the aprt dur the hrs of darkness.

## TERRACE FSS – RCO

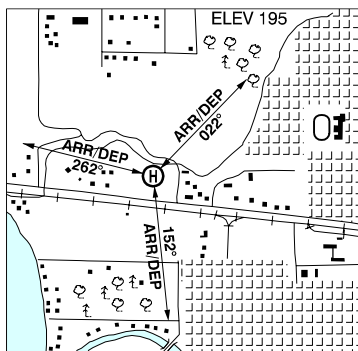
**Prince Rupert** 122.5 (RAAS) 06-14Z± (N54 17 W130 27)

**Sandspit** 122.3 (RAAS) 296.2 (RAAS) (N53 15 W131 48)

## TERRACE / BC HYDRO BC (Heli)

CBW5

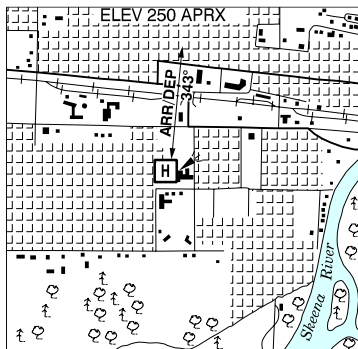
<b>REF</b>	N54 31 07 W128 37 31 22°E UTC-8(7) Elev 195' A5013
<b>OPR</b>	British Columbia Hydro 250-635-5637 Cert PPR
<b>PF</b>	B-1 C-2,3,4,5,6
<b>FLT PLN</b>	NOTAM FILE CYXT
<b>FIC</b>	Kamloops 866-WXBRIEF (Toll free within Canada) or 866-541-4101 (Toll free within Canada & USA)
<b>PAD DATA</b>	53' x 53' asphalt 100' x 100'
<b>COMM</b>	<b>MF</b> Terrace rdo 122.0 5NM centred on CYXT 3.4NM SSE 3700 ASL (CAR 602.98)
<b>PRO</b>	Arr/dep paths brg 262°, 022° & 152° fr heli.
<b>CAUTION</b>	Marked 80' lgt standards all quads exc apch corridors.



## TERRACE (MILLS MEM HOSP) BC (Heli)

CBU5

<b>REF</b>	N54 30 36 W128 35 45 Adj 22°E UTC-8(7) Elev 250' aprx A5013
<b>OPR</b>	Mills Mem Hosp 250-635-2211 Cert PPR
<b>PF</b>	B-1,2,4 C-3,5,6
<b>FLT PLN</b>	NOTAM FILE CYXT
<b>FIC</b>	Kamloops 866-WXBRIEF (Toll free within Canada) or 866-541-4101 (Toll free within Canada & USA)
<b>PAD DATA</b>	90' x 90' circular asphalt/turf
<b>RCR</b>	Opr Heli ltd to 60' length.
<b>COMM</b>	<b>MF</b> Terrace rdo 122.0 5NM centred on CYXT 2.6NM SSE 3700 ASL (CAR 602.98)



# CANADA FLIGHT SUPPLEMENT / GPH 205

Effective 0901Z 20 November 2008 to 0901Z 15 January 2009

AERODROME/FACILITY DIRECTORY B901

## TERRACE (MILLS MEM HOSP) BC (Heli) (Cont'd)

CBU5

<b>PRO</b>	Single arr/dep path brg 343° fr heli.
<b>CAUTION</b>	Obsts all quads exc apch corridor.

## TESLIN YT

CYZU

<b>REF</b>	N60 10 22 W132 44 34 Adj NW 25°E UTC-8(7) Elev 2313' A5028 A5099 D-12 LO5 HI2 CAP	<p>The chart shows a runway (08/26) with a length of 5000 feet. The elevation of the aerodrome is 2313 feet. A 5NM radius circle is centered on the aerodrome, with altitudes of 6100 feet at the top, 4200 feet at the bottom left, and 4600 feet at the bottom right. The lake is labeled 'Teslin Lake'. Various navigation symbols and terrain contours are also present.</p>
<b>OPR</b>	Govt of Yukon 867-634-2450 or 867-390-2525/2112 Reg	
<b>PF</b>	A-1 C-2,4,5	
<b>FLT PLN</b>	NOTAM FILE CYZU	
<b>FIC</b>	Whitehorse 866-WXBRIEF (Toll free within Canada) or 866-541-4107 (Toll free within Canada & USA)	
<b>CARS</b>	867-390-2525 Ltd hrs (see COMM)	
<b>WX</b>	METAR dur CARS hrs (see COMM). TAF 17-23Z± Oct 1-May 31; 15-01Z± Jun 1-Sep 30; issue times: 17, 18Z (DT 16, 18Z) Oct 1-May 31; (DT 15, 18Z) Jun 1-Sep 30.	
<b>SERVICES</b>	<b>S</b> 4,5,6	
<b>RWY DATA</b>	Rwy 08(082°)/26(262°) 5000x100 gravel Rwy 08 up 0.56% <b>RCR</b> CARS, dur CARS hrs ops (see COMM), ltd maint.	
<b>LIGHTING</b>	08-(TE LO)V1, 26-(TE LO)V1 4° ARCAL-122.1 type J	
<b>COMM</b>	<b>MF</b> aprt rdo ltd hrs O/T tfc 122.1 5NM 5400 ASL (CAR 602.98) <b>APRT RDO</b> 122.1 (V) (DT 13-01Z) Jun 01-Sep 30; 17-01Z± Oct 01-May 31	
<b>NAV</b>	<b>NDB</b> ZW 269 (M) N60 10 40 W132 44 12 at A/D Unmonitored when CARS clsd.	
<b>PRO</b>	Rgt hand circuits rwy 08 (CAR 602.96).	
<b>CAUTION</b>	Rwy sfc soft in spring & when wet. Frost heaves may occur in area 600' fr thld rwy 26.	

# CANADA FLIGHT SUPPLEMENT / GPH 205

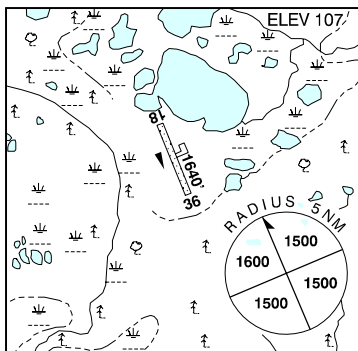
Effective 0901Z 20 November 2008 to 0901Z 15 January 2009

B902 AERODROME/FACILITY DIRECTORY

## TÊTE-À-LA-BALEINE QC

CTB6

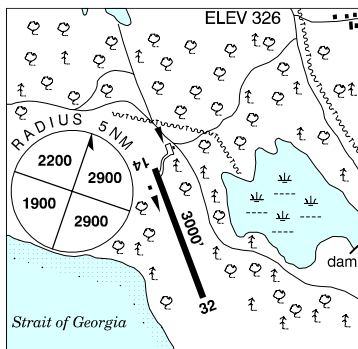
<b>REF</b>	N50 40 28 W59 23 01 2.5SW 23°W UTC-5(4) Elev 107' A5011 E-19 F-22
<b>OPR</b>	Les Entreprises Jacques Laforest Inc 418-242-2947/538-3000 Cert
<b>FLT PLN</b> <b>FIC</b>	(bil) NOTAM FILE CYZV Québec 866-GOMÉTÉO or 866-WXBRIEF (Toll free within Canada) or 866-541-4105 (Toll free within Canada & USA)
<b>RWY DATA</b> <b>RCR</b>	Rwy 18(181°)/36(001°) 1640x85 gravel Opr Snow removal 0930-19Z
<b>LIGHTING</b>	18-(TE ME), 36-(TE ME) ARCAL 123.5 type K
<b>COMM</b> <b>ATF</b>	Corridor tfc 123.5 aprx 30NM wide along the shore up to & including 12,500 ASL, see Section C Québec.



## TEXADA / GILLIES BAY BC

CYGB

<b>REF</b>	N49 41 39 W124 31 04 1NW 19°E UTC-8(7) Elev 326' A5004 E-15
<b>OPR</b>	Regional District of Powell River 604-483-3231 Cert
<b>PF</b>	A-1 C-2,4,5
<b>FLT PLN</b> <b>FIC</b>	NOTAM FILE CYBL Kamloops 866-WXBRIEF (Toll free within Canada) or 866-541-4101 (Toll free within Canada & USA)
<b>SERVICES</b> <b>S</b>	4,5 ltd
<b>RWY DATA</b> <b>RCR</b>	Rwy 14(139°)/32(319°) 3000x75 asphalt Rwy 32 up 1.3% Resident caretaker 604-486-7268 ltd hrs ltd win maint
<b>COMM</b> <b>ATF</b>	tfc 122.7 2NM 2500 ASL
<b>CAUTION</b>	Unsked blasting at quarry NW of aprt

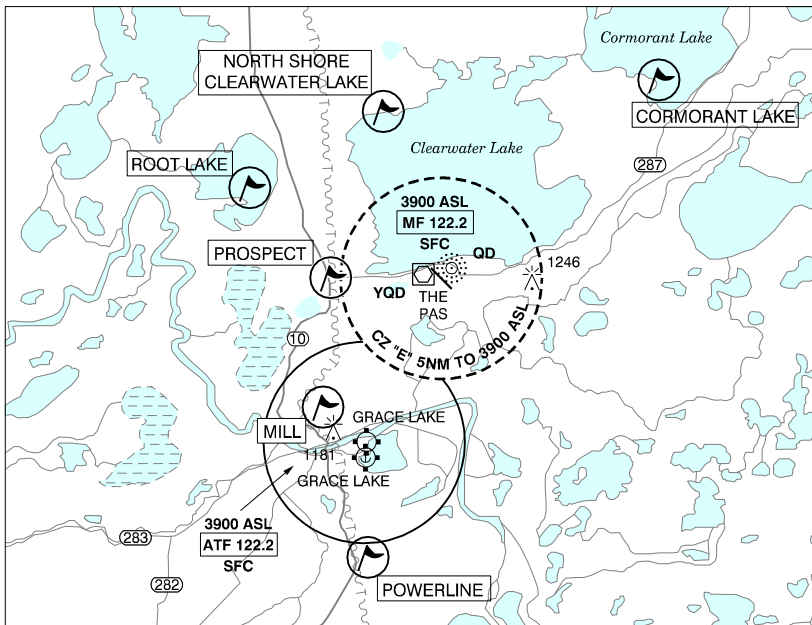


# CANADA FLIGHT SUPPLEMENT / GPH 205

Effective 0901Z 20 November 2008 to 0901Z 15 January 2009

AERODROME/FACILITY DIRECTORY B903

## THE PAS VFR TERMINAL PROCEDURES CHART

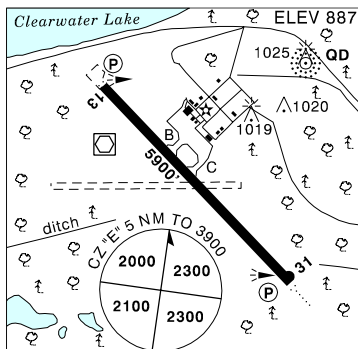


LOCATION	IDENT	LAT/LONG
CORMORANT LAKE	VCCOR	N54° 08.0 W100° 49.5
MILL	VCML	N53° 51.5 W101° 14.3
NORTH SHORE CLEARWATER LAKE	VCCWT	N54° 06.2 W101° 11.5
POWERLINE	VCPWR	N53° 21.0 W101° 04.0
PROSPECTOR	VCPSP	N53° 57.7 W101° 15.8
ROOT LAKE	VCOOT	N54° 03.0 W101° 23.0

## THE PAS MB

<b>REF</b>	N53 58 17 W101 05 28 10NE 8°E UTC-6(5) Elev 887' A5016 E-16 LO1 LO3 HI4 CAP
<b>OPR</b>	Town of The Pas 204-624-5233 Cert
<b>PF</b>	A-1,6 D-2,3,4,5 Tml bldg opr 14-02Z†
<b>FLT PLN</b>	NOTAM FILE CYQD
<b>FIG</b>	Winnipeg 866-WXBRIEF (Toll free within Canada) or 866-541-4103 (Toll free within Canada & USA)
<b>WX</b>	METAR H24. TAF H24, issue times: 01, 07, 13, 19Z. LWIS (see COMM)
<b>SERVICES</b>	Call out chg may be levied for one or more svcs
<b>FUEL</b>	100LL, JA, SP 13-01Z† Mon-Fri, 14-23Z† Sat-Sun exc hols ctc fueller 204-624-5233 O/T 204-627-9114.
<b>OIL</b>	All
<b>SUP FL</b>	D-ice
<b>JASU</b>	10/15 28 VDC 1400 amps only

CYQD



## CANADA FLIGHT SUPPLEMENT / GPH 205

Effective 0901Z 20 November 2008 to 0901Z 15 January 2009

B904 AERODROME/FACILITY DIRECTORY

### THE PAS MB (Cont'd)

CYQD

<b>RWY DATA</b>	Rwy 13(127°)/31(307°) 5900x150 asphalt
<b>RCR</b>	Opr 13-01Z‡ Mon-Fri, 14-23Z‡ Sat-Sun exc hols CRFI, PLR/PCN
<b>LIGHTING</b>	13-AS(TE ME) P2, 31-AO(TE ME) P2 ARCAL-122.2 type K
<b>COMM</b>	
<b>RCO</b>	Saskatoon rdo 122.2 (RAAS) 14-02Z‡ Winnipeg rdo 126.7 (FISE)
<b>MF</b>	Saskatoon rdo 14-02Z‡ O/T tfc 122.2 5NM 3900 ASL (CAR 602.98)
<b>PAL</b>	Winnipeg Ctr 135.625
<b>LWIS</b>	(Wind and altimeter) 124.7
<b>NAV</b>	
<b>NDB</b>	QD 284 (M) N53 58 43 W101 04 51 202° 0.6NM to A/D
<b>VOR/DME</b>	YQD 113.6 Ch 83 N53 58 25 W101 06 00 (911') at A/D
<b>CAUTION</b>	Daily radiosonde balloon launches with an ascent rate of 1000 ft/min btwn the hrs of 1115Z-1345Z and 2315Z-0145Z.

### THE PAS / GRACE LAKE MB

CJR3

<b>REF</b>	N53 49 35 W101 12 19 Adj E 8°E UTC-6(5) Elev 873' A5016 E-16 E-17 LO1 CAP	
<b>OPR</b>	Govt of Manitoba 204-677-6722 Cert	
<b>PF</b>	B-1 C-2,3,4,5,6	
<b>FLT PLN</b>	NOTAM FILE CYQD	
<b>FIC</b>	Winnipeg 866-WXBRIEF (Toll free within Canada) or 866-541-4103 (Toll free within Canada & USA)	
<b>SERVICES</b>		
<b>FUEL</b>	100LL	
<b>OIL</b>	All	
<b>RWY DATA</b>	Rwy 08(081°)/26(261°) 3265x50 gravel Rwy 17(171°)/35(351°) 2798x65 gravel	
<b>RCR</b>	Opr Ltd maint	
<b>LIGHTING</b>	08-(TE LO), 26-(TE LO) ARCAL-122.8 type J	
<b>COMM</b>		
<b>RCO</b>	Winnipeg rdo 126.7 (FISE) comm ctc on gnd unrel	
<b>ATF</b>	tfc 122.2 5NM 3900 ASL	
<b>NAV</b>		
<b>VOR/DME</b>	YQD 113.6 Ch 83 N53 58 25 W101 06 00 (911') 194° 9.4NM to A/D	
<b>CAUTION</b>	Extv bird activity Apr-Oct Rwy edge lgt aprx 27" high loc 5' outside rwy edge.	

# CANADA FLIGHT SUPPLEMENT / GPH 205

Effective 0901Z 20 November 2008 to 0901Z 15 January 2009

AERODROME/FACILITY DIRECTORY B905

## THESSALON MUNI ON

CPL5

<b>REF</b>	N46 19 W83 32 3N 8°W UTC-5(4) Elev 750' A5001 F-21 LO4	
<b>OPR</b>	Town 705-842-2117 Reg PPR	
<b>PF</b>	B-1 C-2,3,4,5,6	
<b>FLT PLN</b>	NOTAM FILE CYZE	
<b>FIC</b>	London 866-WXBRIEF (Toll free within Canada) or 866-541-4104 (Toll free within Canada & USA)	
<b>SERVICES</b>		
<b>OIL</b>	20W50, 80, 100	
<b>S</b>	4,5	
<b>RWY DATA</b>	Rwy 08/26 3100x60 asphalt/gravel, centre 42' asphalt Thld 26 displ 100'. Opr Ltd win maint	
<b>RCR</b>		
<b>LIGHTING</b>	08-(TE LO), 26-(TE LO) ARCAL-122.9 type J, first 100' rwy 26 unlgtd.	
<b>COMM</b>		
<b>ATF</b>	tfc 123.2 5NM 3800 ASL	

## THETFORD MINES QC

CSM3

<b>REF</b>	N46 03 06 W71 15 26 3.5SE 17°W UTC-5(4) Elev 1408' A5002 F-21 LO6 LO8 CAP	
<b>OPR</b>	City 418-335-2981 Reg	
<b>PF</b>	A-1,2 (Tue-Sun) C-3,4,5,6	
<b>FLT PLN</b>	(bil) NOTAM FILE CYSC	
<b>FIC</b>	Québec 866-GOMÉTÉO or 866-WXBRIEF (Toll free within Canada) or 866-541-4105 (Toll free within Canada & USA)	
<b>ACC</b>	Montréal 800-633-1353	
<b>SERVICES</b>		
<b>FUEL</b>	100LL, JA 418-335-3121 ltd hrs O/T 418-334-2362	
<b>RWY DATA</b>	Rwy 06(063°)/24(243°) 4500x100 asphalt Rwy 06 down 0.5% <b>RCR</b> Gestion d'Ericks 418-335-3121	
<b>LIGHTING</b>	06-(TE LO), 24-(TE LO) ARCAL-122.5 type J	
<b>COMM</b>		
<b>ATF</b>	UNICOM ltd hrs O/T tfc 122.8 5NM 4500 ASL	
<b>NAV</b>		
<b>NDB</b>	R1 275 (L) N46 02 44 W71 16 04 073° 0.2NM to thld rwy 06	
<b>CAUTION</b>	Rwy 06 tfc ptn, twr 1.1NM NW of A/D 2075 ASL.	

# CANADA FLIGHT SUPPLEMENT / GPH 205

Effective 0901Z 20 November 2008 to 0901Z 15 January 2009

B906 AERODROME/FACILITY DIRECTORY

## THICKET PORTAGE MB

CZLQ

<b>REF</b>	N55 19 08 W97 42 28 0.8WSW 5°E UTC-6(5) Elev 678' A5016 E-16 E-17	
<b>OPR</b>	Govt of Manitoba 204-677-6722 Cert	
<b>PF</b>	A-1 C-2,4 Tml bldg opr 13-18Z†, 19-2115Z† Mon-Fri, clsd Sat, Sun & hols	
<b>FLT PLN</b>	NOTAM FILE CYTH	
<b>FIG</b>	Winnipeg 866-WXBRIEF (Toll free within Canada) or 866-541-4103 (Toll free within Canada & USA)	
<b>RWY DATA</b>	Rwy 11(115°)/29(295°) 2220x75 crushed rock Rwy 29 down 1.4%.	
<b>RCR</b>	APM 204-286-3278 13-18Z†, 19-2115Z† Mon-Fri exc hols O/T 204-286-3209	
<b>LIGHTING</b>	11-(TE LO), 29-(TE LO) ARCAL-122.8 type J (see CAUTION)	
<b>COMM</b>		
<b>ATF</b>	UNICOM ltd hrs O/T tfc 122.8 5NM 3700 ASL	
<b>CAUTION</b>	Rwy edge lgt installed higher than std (aprx 27 inches high loc 5' outside rwy edge).	

## THOMPSON MB

CYTH

<b>REF</b>	N55 48 12 W97 51 45 3N 5°E UTC-6(5) Elev 732' A5016 E-16 E-17 LO3 HI4 CAP	
<b>OPR</b>	Lcl Govt District of Mystery Lake 204-778-5212 Cert	
<b>PF</b>	A-1,2,3,6 C-4,5	
<b>FLT PLN</b>	NOTAM FILE CYTH	
<b>FIG</b>	Winnipeg 866-WXBRIEF (Toll free within Canada) or 866-541-4103 (Toll free within Canada & USA)	
<b>WX</b>	METAR H24.	
<b>PIK</b>	TAF H24, issue times: 01, 07, 13, 19Z. ATB main floor, airside access.	
<b>SERVICES</b>	Call out chg may be levied for one or more svcs	
<b>FUEL</b>	100LL, JA-1, JB (CON S IP JA-1, FSII)	
<b>OIL</b>	All	
<b>S</b>	1,2,3,4,5,6	
<b>SUP FL</b>	D & A-ice	
<b>PVT ADV</b>	Esso 123.0 204-677-4920 1330-0030Z† Mon-Fri, 16-24Z† Sat & Sun O/T Shell 122.95 call sign VXH74 204-677-2337	
<b>MIL CON</b>	J-Del Aviation (Shell) 204-677-2337	
<b>RWY DATA</b>	Rwy 05(056°)/23(236°) 5800x150 asphalt Rwy 14(146°)/32(326°) 4000x100 gravel/asphalt Rwy 32 up 1.08%	
<b>APRON</b>	Prkg fees after 2 hrs	
<b>RCR</b>	APM 204-778-5212 CRFI, Rwys maint 14-23Z† Mon-Fri exc hols. PLR/PCN	
<b>LIGHTING</b>	05-AN(TE HI), 23-AO(TE HI) P2, 14-(TE ME), 32-(TE ME)	

# CANADA FLIGHT SUPPLEMENT / GPH 205

Effective 0901Z 20 November 2008 to 0901Z 15 January 2009

AERODROME/FACILITY DIRECTORY B907

## THOMPSON MB (Cont'd)

CYTH

<b>COMM</b>	<p><b>RADIO</b> 122.5 341.3 (E) (emerg only 204-677-6979)</p> <p><b>RCO</b> Winnipeg rdo 123.15 (FISE) 126.7 (FISE)</p> <p><b>ATIS</b> 127.65</p> <p><b>MF</b> rdo 122.5 341.3 5NM 4000 ASL (CAR 602.98)</p> <p><b>PAL</b> Winnipeg Ctr 133.15</p>
<b>NAV</b>	<p><b>NDB</b> TH 244 (M) N55 47 40 W97 51 15 at A/D</p> <p><b>HEADFRAME</b> ZTH 276 (L) N55 49 54 W97 45 42 236° 3.4NM to thld 23</p> <p><b>VOR/DME</b> YTH 112.9 Ch 76 N55 48 40 W97 49 30 (796') 238° 1.5NM to A/D</p> <p><b>DME</b> ITH 110.3 Ch 40 N55 47 56 W97 52 18 (716')</p> <p><b>ILS</b> ITH 110.3 (Rwy 05/23) RVR</p>
<b>PRO</b>	Rgt hand circuits rwns 14 & 23 (CAR 602.96).
<b>CAUTION</b>	Frost heaves vic intxn 05/23 & rwy 14/32 & vic intxn rwy 05/23 & twy A. Rwy 14/32 & twy B not recommended for jet acft due to loose gravel & asphalt.

## THOMPSON MB (Heli)

CKM7

<b>REF</b>	N55 42 W97 53 1SSW 5°E UTC-6(5) Elev 702' A5016	
<b>OPR</b>	Manitoba Hydro 204-677-2364 Fax 204-778-0185 Reg PPR	
<b>PF</b>	B-1 C-2,3,4,5,6	
<b>FLT PLN</b>	NOTAM FILE CYTH	
<b>FIC</b>	Winnipeg 866-WXBRIEF (Toll free within Canada) or 866-541-4103 (Toll free within Canada & USA)	
<b>SERVICES</b>		
<b>FUEL</b>	JB	
<b>PAD DATA</b>	180' x 102'	
<b>COMM</b>	<b>ATF</b> Thompson rdo tfc 122.5 5NM centred on Thompson A/D 6.1NM N 4000 ASL	
<b>NAV</b>	<p><b>NDB</b> TH 244 (M) N55 47 40 W97 51 15 185° 5.8NM to A/D</p> <p><b>VOR/DME</b> YTH 112.9 Ch 76 N55 48 40 W97 49 30 (796') 188° 7.0NM to A/D</p>	
<b>CAUTION</b>	Lgtd twrs 1020 ASL (295 AGL) & 1007 ASL (280 AGL) in proximity.	



# CANADA FLIGHT SUPPLEMENT / GPH 205

Effective 0901Z 20 November 2008 to 0901Z 15 January 2009

B908 AERODROME/FACILITY DIRECTORY

## THORBURN NS

CCZ5

<b>REF</b>	N45 33 38 W62 35 41 2W 20°W UTC-4(3) Elev 120' A5003 F-22	
<b>OPR</b>	Scotia Pine 902-922-2470 Reg	
<b>PF</b>	C-1,2,3,4,5,6	
<b>FLT PLN</b>	NOTAM FILE CYHZ	
<b>FIC</b>	Halifax 866-WXBRIEF or (French) 866-GOMÉTÉO (Toll free within Canada) or 866-541-4106 (Toll free within Canada & USA)	
<b>ACC</b>	Moncton 506-867-7176 or 866-480-8200 Flt Plns by Fax 506-867-7180 & include phone numbers where pilot can be reached prior to dep	
<b>SERVICES</b>	<b>S</b> 4	
<b>RWY DATA</b>	Rwy 05/23 2000x40 gravel	
<b>RCR</b>	Opr Ltd win maint	
<b>COMM</b>		
<b>ATF</b>	tfc 122.8 5NM 3100 ASL	
<b>CAUTION</b>	Deep ditch 100' fr button 05. High trees on apch to rwy 05.	

## THOUSAND ISLANDS REGIONAL ON — See BROCKVILLE - THOUSAND ISLANDS REGIONAL

Sep 09

## THREE HILLS AB

CCN3

<b>REF</b>	N51 41 48 W113 12 33 2ESE 17°E UTC-7(6) Elev 2975' VTA A5005 E-15 E-16 LO2	
<b>OPR</b>	Three Hills Apt Comsn 403-443-2349/0919 Reg	
<b>PF</b>	B-1 C-5 D-2,3,5	
<b>FLT PLN</b>	NOTAM FILE CYBW	
<b>FIC</b>	Edmonton 866-WXBRIEF (Toll free within Canada) or 866-541-4102 (Toll free within Canada & USA)	
<b>ACC</b>	Edmonton IFR 888-358-7526 or 780-890-8304/8305	
<b>SERVICES</b>	Svcs O/R from Opr	
<b>FUEL</b>	100LL	
<b>RWY DATA</b>	Rwy 11(111°)/29(291°) 3000x75 asphalt	
<b>TWY</b>	Twy B rstd to 3500 lbs or less; width 18' surface rough and soft in places	
<b>RCR</b>	Opr Ltd maint 15-2359Z† Mon-Sat 403-443-2349 O/T 403-443-0919.	
<b>LIGHTING</b>	11-(TE ME), 29-(TE ME) ARCAL-123.2 type K Twy B unlgtd.	
<b>COMM</b>		
<b>ATF</b>	tfc 123.2 5NM 6000 ASL	

# CANADA FLIGHT SUPPLEMENT / GPH 205

Effective 0901Z 20 November 2008 to 0901Z 15 January 2009

AERODROME/FACILITY DIRECTORY B909

## THREE HILLS AB (Cont'd)

CEN3

<b>NAV</b>	<b>NDB</b> Z1 305 (L) N51 41 50 W113 13 00 at A/D Pvt Unmonitored
<b>PRO</b>	Rgt hand circuits rwy 29 (CAR 602.96).
<b>CAUTION</b>	Extv flt trg activity vic A/D, frequent NORDO tfc. Three Hills Hosp heli 1.8NM W.

## THREE HILLS (HOSP) AB (Heli)

CFA8

<b>REF</b>	N51 42 31 W113 15 07 Adj E 17°E UTC-7(6) Elev 3000' VTA A5005	
<b>OPR</b>	Three Hills District Health Services 403-443-2444 Cert PPR	
<b>PF</b>	B-1,2,4 C-1,2,3,4,5,6	
<b>FLT PLN</b>	NOTAM FILE CYBW	
<b>FIC</b>	Edmonton 866-WXBRIEF (Toll free within Canada) or 866-541-4102 (Toll free within Canada & USA)	
<b>ACC</b>	Edmonton IFR 888-358-7526 or 780-890-8304/8305	
<b>PAD DATA</b>	50' dia 100' dia	
<b>LIGHTING</b>	DR-RY(LO) PNR	
<b>COMM</b>	<b>ATF</b> tfc 123.2 5NM centred on Three Hills A/D 1.8NM E 6000 ASL	
<b>PRO</b>	Single arr/dep path brg 028°.	



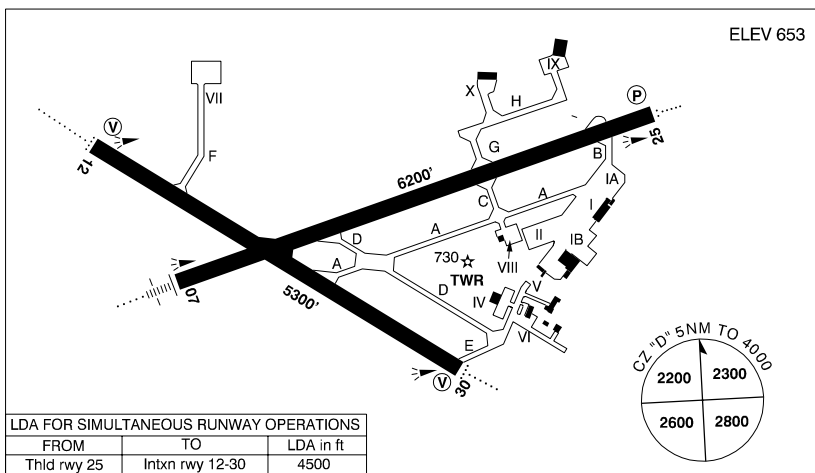
# CANADA FLIGHT SUPPLEMENT / GPH 205

Effective 0901Z 20 November 2008 to 0901Z 15 January 2009

AERODROME/FACILITY DIRECTORY B911

**THUNDER BAY ON**

**CYQT**



LDA FOR SIMULTANEOUS RUNWAY OPERATIONS		
FROM	TO	LDA in ft
Thld rwy 25	Intxn rwy 12-30	4500

<b>REF</b>	N48 22 19 W89 19 26 Adj SW 3°W UTC-5(4) Elev 653' A5001 A5008 E-17 F-21 LO4 HI4 T2 CAP RCAP
<b>OPR</b>	Thunder Bay Intl Apts Authority Inc (TBIAAI) 807-473-2600 Cert
<b>PF</b>	A-1,2,3,6 C-4,5
<b>CUST</b>	AOE/40 888-226-7277 13-05Z‡
<b>FLT PLN</b>	NOTAM FILE CYQT
<b>FIC</b>	Winnipeg 866-WXBRIEF (Toll free within Canada) or 866-541-4103 (Toll free within Canada & USA)
<b>WX</b>	METAR H24. TAF H24, issue times: 02, 08, 14, 20Z.
<b>PIK</b>	Esso FBO Lobby SE corner, airside & groundside access 1030-04Z‡.
<b>SERVICES</b>	
<b>FUEL</b>	100LL, JA-1, JB, HPR, 1030-04Z‡ dly O/T 807-475-5915 (Shell) or 807-577-1178 (Esso) (CON S IP JA-1, FSII)
<b>OIL</b>	All & Turbo 35
<b>S</b>	1,2,3,4,5,6
<b>ARFF</b>	5 1145-1215Z‡, 6 1215-0330Z‡ O/T ARFF avbl PPR call out chg. No acft configured for 20 seats or more is allowed to land or tkof outside these hrs unless appr by Thunder Bay apt authority exc for diversions or as an altn A/D.
<b>SUP FL</b>	LHOX
<b>JASU</b>	CE16
<b>PVT ADV</b>	Esso 123.2 Shell 122.85 1030-0330Z‡
<b>MIL CON</b>	Maintair Aviation Services Ltd (Shell) 807-475-5915
<b>RWY DATA</b>	Rwy 07(074°)/25(254°) 6200x200 asphalt Rwy 25 up 0.30% Rwy 12(124°)/30(304°) 5300x200 asphalt
<b>TWY</b>	Twy E (NE of D) uncontrolled. Twy F extends for 148' then changes to apron VII.
<b>APRON</b>	Apron I rstd to sked commercial air carrier by stand assignment only fr TBIAAI. Apron II itinerant acft prkg.
<b>RCR</b>	Opr 11-05Z‡ O/T 2 hrs PNR, CRFI, PLR/PCN
<b>LIGHTING</b>	07-AN(TE HI), 25-AO(TE HI) P2, 12-AD(TE ME) V1, 30-AD (non-std 1700') (TE ME) V1

# CANADA FLIGHT SUPPLEMENT / GPH 205

Effective 0901Z 20 November 2008 to 0901Z 15 January 2009

B912 AERODROME/FACILITY DIRECTORY

## THUNDER BAY ON (Cont'd)

CYQT

<b>COMM</b>	<p><b>RCO</b> Winnipeg rdo 122.5 (FISE) 126.7 (FISE)  <b>ATIS</b> 128.8 285.3 11-04Z†  <b>GND</b> 121.9 275.8 11-04Z†  <b>TWR</b> 118.1 236.6 (E) 11-04Z† (emerg only 807-473-5252)  <b>MF</b> rdo 118.1 236.6 (E) 04-11Z† 5NM 4000 ASL (CAR 602.98)          (emerg only 807-473-4311)  <b>ARR</b> 119.2 363.8  <b>DEP</b> 119.2 363.8  <b>PAL</b> Winnipeg Ctr 132.125 387.4</p>
<b>NAV</b>	<p><b>VOT</b> 114.8  <b>NDB</b> QT 332 (M) N48 20 48 W89 26 01 072° 4.2NM to thld 07          SUPERIOR ZQT 263 (L) N48 23 45 W89 13 26 254° 3.6NM to thld 25  <b>VORTAC</b> YQT 114.1 Ch 88 N48 15 14 W89 26 15 (1641') 034° 8.4NM to A/D  <b>TACAN</b> McKAY UAU 112.5 Ch 72 N48 22 25 W89 19 44 (682') at A/D          TACAN unavbl in SE SECTOR beyond 20NM below 7000'.  <b>ILS</b> IQT 109.5 (Rwy 07) RVR</p>
<b>PRO</b>	<p>Rgt hand circuits rwys 25 &amp; 30 (CAR 602.96). Unless otherwise auth by ATC: Turns to final apch to be made at or above 2500 ASL; maintain 2500 ASL or above as long as practical before commencing final descent; remain on or slightly above GS of ILS or VASIS. See current CAP for additional NOISE &amp; NIGHT restrictions.</p>
<b>CAUTION</b>	<p>Heli flood lgts 30 AGL N side of apron II. Lgtd obst 746 ASL 0.5NM NE thld 25 (intxn Thunder Bay Express Way &amp; Arthur street). Terrain rises abruptly to 1600 ASL 2NM SE of A/D. Extv fit tng within 35NM W &amp; N of CYQT CZ to 6000 ASL.</p>

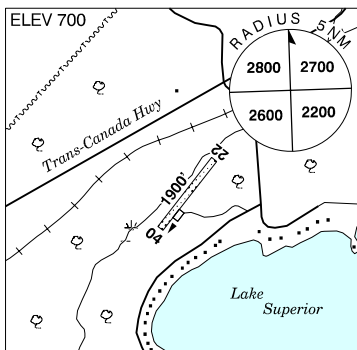
## THUNDER BAY FSS – RCO

**Island Lake** 122.2 (RAAS) (N53 51 W94 39)  
**Pickle Lake** 122.2 (RAAS) 11-02Z (N51 27 W90 13)

## THUNDER BAY / ELDORADO ON

CED8

<b>REF</b>	<p>N48 34 20 W88 49 00 20E 2° W          UTC-5(4) Elev 700' A5001 A5008          E-17 F-21</p>
<b>OPR</b>	<p>Brian Forsyth 807-345-1388 or          807-983-2673 Reg PPR</p>
<b>PF</b>	<p>C-1,2 D-3,4,5,6</p>
<b>FLT PLN</b>	<p>NOTAM FILE CYQT  <b>FIG</b> Winnipeg 866-WXBRIEF (Toll free within Canada) or 866-541-4103 (Toll free within Canada &amp; USA)</p>
<b>RWY DATA</b>	<p>Rwy 04(040°)/22(220°) 1900x50          gravel/turf Rwy 22 down 1%</p>
<b>RCR</b>	<p>Opr Ltd win maint</p>
<b>COMM</b>	<p><b>ATF</b> Unicom Ltd hrs O/T tfc 123.0 3NM 3000 ASL</p>
<b>CAUTION</b>	<p>Trees within 100' of centerline, 50' AGL, both sides. Trees on apch, both thlds. Rising terrain N &amp; E. Frequent helicopter activity 2NM E. Wildlife in vicinity of rwy.</p>



# CANADA FLIGHT SUPPLEMENT / GPH 205

Effective 0901Z 20 November 2008 to 0901Z 15 January 2009

AERODROME/FACILITY DIRECTORY B913

## THUNDER BAY (HEALTH SCIENCE CENTRE) ON (Heli)

CTB2

<b>REF</b>	N48 25 23 W89 16 09 Adj 3°W UTC-5(4) Elev 705' A5001 A5008	
<b>OPR</b>	Thunder Bay Regional Health Science Centre 807-864-6100 ext 6509 Cert PPR	
<b>FLT PLN</b>	NOTAM FILE CYQT	
<b>FIC</b>	Winnipeg 866-WXBRIEF (Toll free within Canada) or 866-541-4103 (Toll free within Canada & USA)	
<b>PAD DATA</b>	87' dia concrete 116' dia concrete max length 58'	
<b>RCR</b>	Opr	
<b>LIGHTING</b>	RY(LO) Green	
<b>COMM</b>	<p><b>RCO</b> Winnipeg rdo 122.5 (FISE) 126.7 (FISE)</p> <p><b>TWR</b> Thunder Bay 118.1 236.6 (E) 11-04Z‡ (emerg only 807-473-5252)</p> <p><b>MF</b> Thunder Bay rdo 118.1 04-11Z‡ centred on Thunder Bay apt 3.8NM SW 4000 ASL (CAR 602.98) (emerg only 807-473-4311)</p>	
<b>NAV</b>	<p><b>NDB</b> Thunder Bay QT 332 (M) N48 20 48 W89 26 01 058° 8.0NM to A/D</p> <p><b>VORTAC</b> Thunder Bay YQT 114.1 Ch 88 N48 15 14 W89 26 15 (1641') 035° 12.2NM to A/D</p>	
<b>PRO</b>	Arr/Dep btwn 095°-124° & 313°-330° clockwise fr heli.	
<b>CAUTION</b>	Extv flt tng within 35NM W & N of CYQT CZ to 6000 ASL. Terrain rises abruptly to 1600 ASL 4.7NM S of heli.	

## TILLSONBURG ON

CNQ4

<b>REF</b>	N42 55 37 W80 44 59 3N 9°W UTC-5(4) Elev 885' A5000 F-21 LO6 CAP	
<b>OPR</b>	Town 519-842-2929 Reg	
<b>PF</b>	B-1 C-2,3,4,5,6	
<b>FLT PLN</b>	NOTAM FILE CYXU	
<b>FIC</b>	London 866-WXBRIEF (Toll free within Canada) or 866-541-4104 (Toll free within Canada & USA)	
<b>SERVICES</b>	13-21Z‡ Apr & Oct, 13Z‡-SS May-Sep, 14-21Z‡ Nov-Mar. Dec 25 & Jan 1 call out only. After hrs, airside phone in ATB foyer can be used. Call out charge may be levied.	
<b>FUEL</b>	100LL, JA-1	
<b>OIL</b>	100W, 100W plus, 15W50, 20W50 X/C, 20W50 type M	
<b>S</b>	5	
<b>RWY DATA</b>	Rwy 02(015°)/20(195°) 2400x100 turf Thld 02 displ 100' Thld 20 displ 100' Rwy 07/25 4002x100 asphalt Rwy 14/32 2400x100 turf Thld 14 displ 300' Thld 32 displ 100' Opr No win maint on rwys 14/32 & 02/20.	
<b>RCR</b>	Opr No win maint on rwys 14/32 & 02/20.	
<b>LIGHTING</b>	07-(TE LO), 25-(TE LO) ARCAL-123.0 type J.	

# CANADA FLIGHT SUPPLEMENT / GPH 205

Effective 0901Z 20 November 2008 to 0901Z 15 January 2009

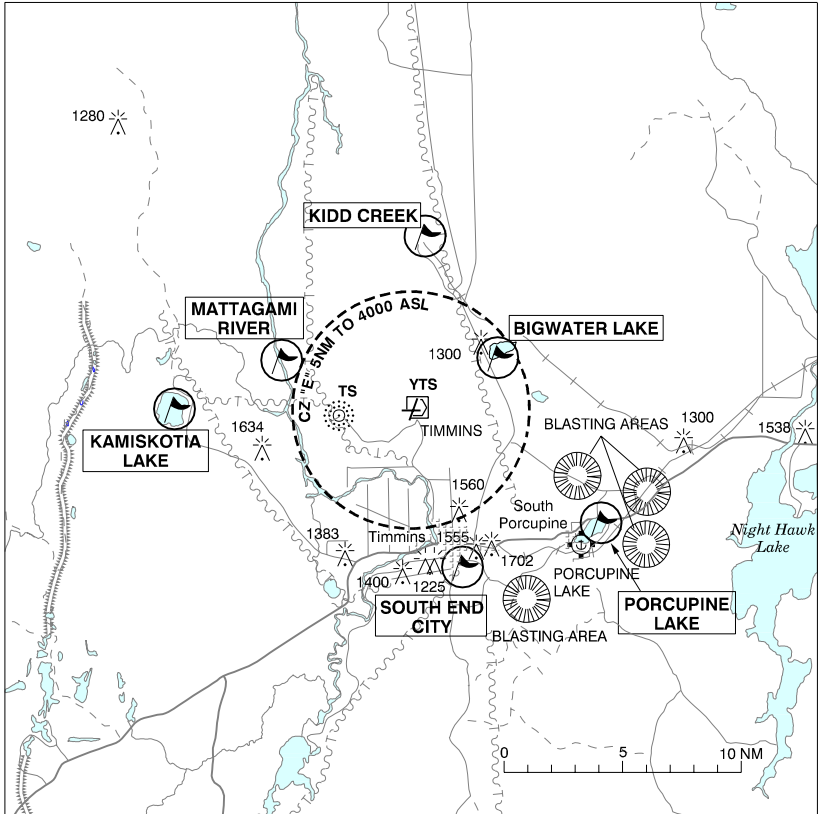
B914 AERODROME/FACILITY DIRECTORY

## TILLSONBURG ON (Cont'd)

CNQ4

<b>COMM</b>	<b>ATF</b> UNICOM ltd hrs O/T ftc 122.8 5NM 3900 ASL
<b>CAUTION</b>	Trees east of rwy 25.

## TIMMINS VFR TERMINAL PROCEDURES CHART



LOCATION	IDENT	LAT/LONG
BIGWATER LAKE	VCBWL	N48° 36.45 W81° 17.00
KAMISKOTIA LAKE	VCKMS	N48° 34.00 W81° 38.00
KIDD CREEK	VCKDC	N48° 41.00 W81° 22.50
MATTAGAMI RIVER	VCMTR	N48° 36.00 W81° 30.80
PORCUPINE LAKE	VCPQP	N48° 29.00 W81° 11.00
SOUTH END CITY	VCSTH	N48° 27.50 W81° 20.00

# CANADA FLIGHT SUPPLEMENT / GPH 205

Effective 0901Z 20 November 2008 to 0901Z 15 January 2009

AERODROME/FACILITY DIRECTORY B915

## TIMMINS ON

CYTS

<b>REF</b>	N48 34 11 W81 22 36 6NNW 11°W UTC-5(4) Elev 967' A5009 E-18 F-21 LO4 LO7 HI4 CAP	
<b>OPR</b>	City of Timmins 705-264-5805 Cert	
<b>PF</b>	B-1,2,3,6 C-4,5	
<b>CUST</b>	AOE/15 888-226-7277 14-22Z‡	
<b>FLT PLN</b>	NOTAM FILE CYTS	
<b>FIG</b>	London 866-WXBRIEF (Toll free within Canada) or 866-541-4104 (Toll free within Canada & USA)	
<b>WX</b>	METAR H24. TAF H24, issue times: 02, 08, 14, 20Z.	
<b>PIK</b>	Esso FBO, north end of field, available 10-04Z‡ Mon-Fri, 10-23Z‡ Sat, 10-01Z‡ Sun, airside access only	
<b>SERVICES</b>		
<b>FUEL</b>	100LL, JA-1, HPR 1030Z-0100Z‡ Sun-Fri, 1030Z-2300Z‡ Sat	
<b>OIL</b>	All	
<b>S</b>	1, 2, 3	
<b>SUP FL</b>	D-ice 705-264-9521 Air Creebec	
<b>JASU</b>	10/15	
<b>RWY DATA</b>	Rwy 03(032°)/21(212°) 6000x150 asphalt Rwy 10(102°)/28(282°) 4903x150 asphalt	
<b>RCR</b>	FSS CRFI/RSC avbl ltd hrs. PLR/PCN	
<b>LIGHTING</b>	03-AN(TE HI) P2, 21-AO(TE HI) P2, 10-AO(TE ME) P2, 28-AO(TE ME) P2	
<b>COMM</b>		
<b>RADIO</b>	122.3 (E) (emerg only 705-264-6009)	
<b>RCO</b>	London rdo 123.55 (FISE) 126.7 (FISE)	
<b>ATIS</b>	124.95 10-05Z‡	
<b>MF</b>	rdo 122.3 5NM 4000 ASL (CAR 602.98)	
<b>PAL</b>	Toronto Ctr 128.3 226.3	
<b>VDF</b>	122.3	
<b>NAV</b>		
<b>NDB</b>	TS 212 (M) N48 33 55 W81 27 09 096° 2.6NM to A/D	
<b>VOR/DME</b>	YTS 113.0 Ch 77 N48 34 19 W81 22 12 at A/D	
<b>ILS</b>	ITS 109.7 (Rwy 03-21) RVR	
<b>PRO</b>	Turn around bay on thld 21 not to be used for holding.	
<b>CAUTION</b>	Blasting ops aprx 11NM ESE & aprx 9NM SE of aprt (1NM radius) Mon-Fri dur daylight hrs. Debris to 2000 MSL, ctc rdo. Porcupine Lake ATF area adj SE (ltd hrs 123.3 O/T 122.8 5NM 2000 ASL).	

## TIMMINS FSS – RCO

**Moosonee** 122.5 (RAAS) 12-02Z‡ (N51 17 W80 38)

**Muskoka** 122.3 (RAAS) (N44 58 W79 18)



# CANADA FLIGHT SUPPLEMENT / GPH 205

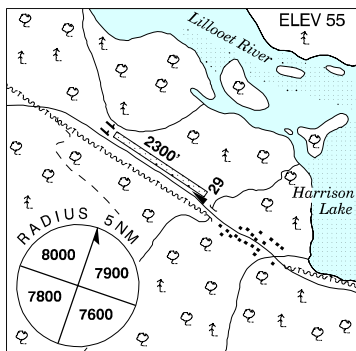
Effective 0901Z 20 November 2008 to 0901Z 15 January 2009

B916 AERODROME/FACILITY DIRECTORY

## TIPELLA BC

CBB7

<b>REF</b>	N49 44 35 W122 09 47 19°E UTC-8(7) Elev 55' A5004 E-15
<b>OPR</b>	Sea to Sky Air Ltd 604-898-1975 or 866-364-3106 Reg PPR
<b>PF</b>	C-2
<b>FLT PLN</b>	NOTAM FILE CYXX
<b>FIC</b>	Kamloops 866-WXBRIEF (Toll free within Canada) or 866-541-4101 (Toll free within Canada & USA)
<b>RWY DATA</b>	Rwy 11/29 2300x50 gravel
<b>RCR</b>	Opr No win maint. Rwy soft in win.
<b>COMM</b>	
<b>ATF</b>	tfc 122.7 2NM 1600 ASL

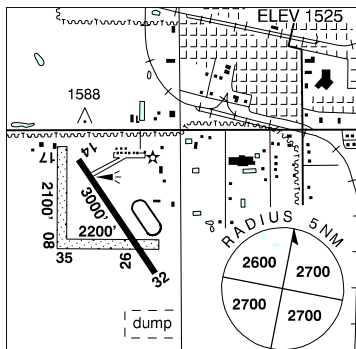


**CAUTION** 100' trees aprx 500' fr thlds, 150' trees adj N rwy 11, ocsl subsidence, turbulence & wind shear on apch. Rgt hand circuits rwy 29 (CAR 602.96) due high terrain. Seasonal helilogging ops.

## TISDALE SK

CJY3

<b>REF</b>	N52 50 12 W104 04 00 Adj SW 11°E UTC-6 Elev 1525' A5016 E-16 LO2 CAP
<b>OPR</b>	Town 306-873-2681/4447 Reg
<b>PF</b>	B-1 C-2,4,5
<b>FLT PLN</b>	NOTAM FILE CYP A
<b>FIC</b>	Edmonton 866-WXBRIEF (Toll free within Canada) or 866-541-4102 (Toll free within Canada & USA)
<b>SERVICES</b>	Call out chg may be levied for one or more svcs
<b>FUEL</b>	100LL 1430-23Z Mon-Fri exc hols O/T 306-873-4447
<b>OIL</b>	All 1430-23Z Mon-Fri exc hols
<b>S</b>	1,2,3,4,5,6
<b>RWY DATA</b>	Rwy 14(135°)/32(315°) 3000x75 asphalt Rwy 17(169°)/35(349°) 2100x200 turf Rwy 08(079°)/26(259°) 2200x160 turf Rwy slopes up E to W.
<b>RCR</b>	No win maint rwys 08/26 & 17/35.
<b>LIGHTING</b>	14-(TE LO), 32-(TE LO) ARCAL 122.8 type J
<b>COMM</b>	
<b>ATF</b>	tfc 122.8 5NM 4600 ASL
<b>NAV</b>	
<b>NDB</b>	E2 295 (L) N52 47 53 W104 02 22 328° 2.3NM to A/D Pvt Unmonitored
<b>CAUTION</b>	Extv bird activity near thld. Rwy 32 vic of dump.



# CANADA FLIGHT SUPPLEMENT / GPH 205

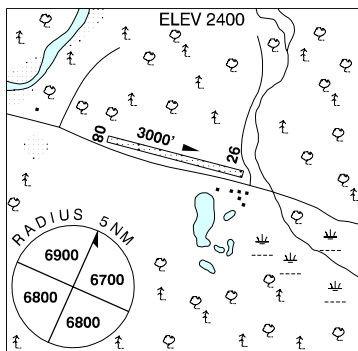
Effective 0901Z 20 November 2008 to 0901Z 15 January 2009

AERODROME/FACILITY DIRECTORY B917

## TOAD RIVER / MILE 422 (ALASKA HIGHWAY) BC

CBK7

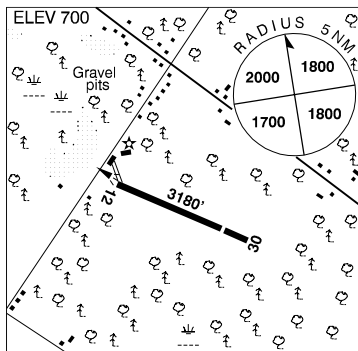
<b>REF</b>	N58 50 58 W125 14 24 Adj 24°E UTC-8(7) Elev 2400' A5022 A5099 D-12
<b>OPR</b>	Toad River Community Club 250-232-5401 Reg PPR
<b>PF</b>	C-1,2,5
<b>FLT PLN</b>	NOTAM FILE CYQH
<b>FIC</b>	Whitehorse 866-WXBRIEF (Toll free within Canada) or 866-541-4107 (Toll free within Canada & USA)
<b>RWY DATA</b>	Rwy 08(079°)/26(259°) 3000x80 gravel Opr No win maint
<b>RCR</b>	
<b>COMM</b>	
<b>ATF</b>	tfc 123.2 5NM 5400 ASL
<b>CAUTION</b>	Hi terrain all quads.



## TOBERMORY ON

CNR4

<b>REF</b>	N45 13 18 W81 37 43 2.2SE 9°W UTC-5(4) Elev 700' A5000 F-21
<b>OPR</b>	Township of the North Bruce Peninsula 519-596-2898 Reg
<b>PF</b>	B-1 C-2 D-3,4,5
<b>FLT PLN</b>	NOTAM FILE CYVV
<b>FIC</b>	London 866-WXBRIEF (Toll free within Canada) or 866-541-4104 (Toll free within Canada & USA)
<b>SERVICES</b>	
<b>FUEL</b>	100LL
<b>OIL</b>	All
<b>RWY DATA</b>	Rwy 12(117°)/30(297°) 3180x60 asphalt Thld 30 displ 450'. Opr No win maint
<b>RCR</b>	
<b>LIGHTING</b>	12-(TE LO), 30-(TE LO) ARCAL-122.8 type J
<b>COMM</b>	
<b>ATF</b>	UNICOM ltd hrs O/T tfc 122.8 5NM 3700 ASL
<b>PRO</b>	When departing rwy 30 climb on rwy heading until past farm bldgs adj NW before making left turn.



# CANADA FLIGHT SUPPLEMENT / GPH 205

Effective 0901Z 20 November 2008 to 0901Z 15 January 2009

B918 AERODROME/FACILITY DIRECTORY

## TOFIELD AB

CEV7

<b>REF</b>	N53 22 16 W112 41 48 Adj W 17°E UTC-7(6) Elev 2311' VTA A5015 E-15 E-16 LO2	
<b>OPR</b>	Town of Tofield 780-662-3269 Reg	
<b>PF</b>	A-1 C-2,3,4,5	
<b>FLT PLN</b>	NOTAM FILE CYEG	
<b>FIC</b>	Edmonton 780-890-8386 or Edmonton 866-WXBRIEF (Toll free within Canada) or 866-541-4102 (Toll free within Canada & USA)	
<b>ACC</b>	Edmonton IFR 888-358-7526 or 780-890-8304/8305	
<b>SERVICES</b>		
<b>FUEL</b>	100LL	
<b>RWY DATA</b>	Rwy 10(101°)/28(281°) 3000x75 asphalt	
<b>RCR</b>	Opr Ltd win maint	
<b>LIGHTING</b>	10-(TE ME), 28-(TE ME) ARCAL-123.2 type K	
<b>COMM</b>		
<b>ATF</b>	tfc 123.2 5NM 5400 ASL	
<b>PRO</b>	Rgt hand circuits rwy 10 (CAR 602.96).	
<b>CAUTION</b>	Model acct activity Apr 1-Sep 30.	

## TOFIELD (HEALTH CENTRE) AB (Heli)

CTF2

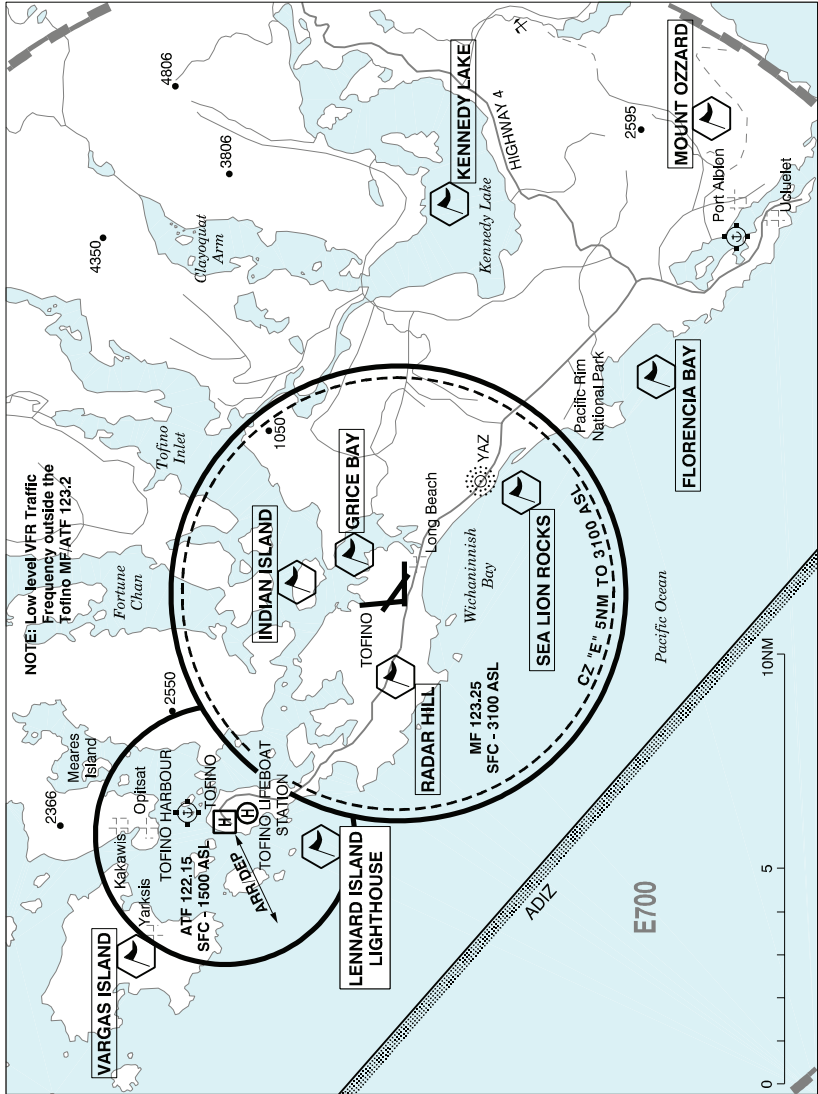
<b>REF</b>	N53 22 23 W112 39 02 Adj E 17°E UTC-7(6) Elev 2297 VTA A5015	
<b>OPR</b>	Tofield Health Centre 780-662-3263 Cert PPR	
<b>PF</b>	A-1,2,4 C-3,5	
<b>FLT PLN</b>	NOTAM FILE CYEG	
<b>FIC</b>	Edmonton 866-WXBRIEF (Toll free within Canada) or 866-541-4102 (Toll free within Canada & USA)	
<b>ACC</b>	Edmonton IFR 888-358-7526 or 780-890-8304/8305	
<b>PAD DATA</b>	39' dia concrete 64' dia FATO 85' dia grass safety area	
<b>RCR</b>	Opr	
<b>LIGHTING</b>	RY(LO) RF(FL)	
<b>COMM</b>		
<b>ATF</b>	tfc 123.2 5NM centred on Tofield land A/D 1.6NM W 5400 ASL	
<b>PRO</b>	Single arr/dep paths brg 108° & 333° fr heli.	
<b>CAUTION</b>	Twr NW of heli.	

# CANADA FLIGHT SUPPLEMENT / GPH 205

Effective 0901Z 20 November 2008 to 0901Z 15 January 2009

AERODROME/FACILITY DIRECTORY B919

## TOFINO VFR TERMINAL PROCEDURES CHART



LOCATION	IDENT	LAT/LONG
FLORENCE BAY	VCFLO	N48° 59.00 W125° 38.58
GRICE BAY	VCGRB	N49° 05.91 W125° 44.83
INDIAN ISLAND	VCIS	N49° 07.08 W125° 45.83
KENNEDY LAKE	VCCLK	N49° 03.91 W125° 32.50
LENNARD ISLAND LIGHTHOUSE	VCLIL	N49° 06.63 W125° 55.33
MOUNT OZZARD	VCOZZ	N48° 57.83 W125° 29.50
RADAR HILL	VCRDR	N49° 05.00 W125° 49.33
SEA LION ROCKS	VCSEA	N49° 02.00 W125° 42.66
VARGAS ISLAND	VCVRG	N49° 11.75 W125° 59.16

# CANADA FLIGHT SUPPLEMENT / GPH 205

Effective 0901Z 20 November 2008 to 0901Z 15 January 2009

## B920 AERODROME/FACILITY DIRECTORY

### TOFINO BC

CYAZ

<b>REF</b>	N49 04 56 W125 46 21 6SE 19°E UTC-8(7) Elev 80' A5004 E-15 LO2 HI3 CAP	
<b>OPR</b>	Alberni-Clayoquot Regional District 250-720-2700 Cert	
<b>PF</b>	B-1,6 D-2,3,4,5	
<b>FLT PLN</b>	NOTAM FILE CYAZ <b>FIC</b> Kamloops 866-WXBRIEF (Toll free within Canada) or 866-541-4101 (Toll free within Canada & USA) <b>WX</b> METAR 15-01Z (DT 13-01Z). TAF 17-01Z (DT 15-01Z), issue times: 17, 18Z (DT 15, 18Z).	
<b>SERVICES</b>		
<b>FUEL</b>	100LL, JA-1 Cardlock 24 hr emerg phone 866-678-6881	
<b>RWY DATA</b>	Rwy 07(071°)/25(251°) 5000x150 concrete Thld 07 displ 720'. Thld 25 displ 350'. Rwy 10(107°)/28(287°) 5000x100 concrete Thld 10 displ 500'. Rwy 15(156°)/33(336°) 5000x100 concrete Thld 15 displ 200'. Thld 33 displ 870'. <b>RCR</b> Caretaker 250-725-2006 No win maint. PLR/PCN	
<b>COMM</b>	For IFR clnc ctc Nanaimo rdo 1330-0530Z± O/T Pacific rdo <b>RCO</b> Nanaimo rdo 123.25 (RAAS) 1330-0530Z± Pacific rdo 126.7 (FISE) <b>MF</b> Nanaimo rdo 123.25 1330-0530Z± O/T tfc 5NM 3100 ASL (CAR 602.98) <b>PAL</b> Vancouver Ctr 132.9 254.9	
<b>NAV</b>	<b>NDB</b> YAZ 359 (M) N49 02 49 W125 42 15 285° 3.0NM to A/D	
<b>CAUTION</b>	2 inch deep depressions located 2100' and 2250' fr thld 28.	

### TOFINO (HOSP) BC (Helicopter)

CBC8

<b>REF</b>	N49 09 04 W125 54 33 Adj 19°E UTC-8(7) Elev 50' aprx A5004	
<b>OPR</b>	Tofino Gen Hosp 250-725-3204 Cert PPR	
<b>PF</b>	B-1,2,4 C-3,5,6	
<b>FLT PLN</b>	NOTAM FILE CYAZ <b>FIC</b> Kamloops 866-WXBRIEF (Toll free within Canada) or 866-541-4101 (Toll free within Canada & USA)	
<b>PAD DATA</b>	40' dia concrete 85' dia turf	
<b>RCR</b>	Opr	
<b>LIGHTING</b>	RY DR(LO) RF(FL)	
<b>COMM</b>	<b>ATF</b> Tofino Harbour tfc 122.15 3NM 1500 ASL exc area within Tofino CZ	
<b>PRO</b>	Day: Arr/dep to/fr SW over the water. Night: Arr/dep to/fr SW. Turn onto final apch over Wickaninish Island. Do not descend below 1000 ASL until established on final apch.	
<b>CAUTION</b>	Night: Felice Island 350 ASL immediately N of apch path.	

## CANADA FLIGHT SUPPLEMENT / GPH 205

Effective 0901Z 20 November 2008 to 0901Z 15 January 2009

AERODROME/FACILITY DIRECTORY B921

### TOFINO LIFEBOAT STATION BC (Heli)

**CBR7**

<b>REF</b>	N49 08 W125 54 19°E UTC-8(7) Elev 10' A5004
<b>OPR</b>	Cdn Coast Guard 250-725-3231 Reg PPR
<b>PF</b>	A-1 C-2,3,4,5,6
<b>FLT PLN</b>	NOTAM FILE CYAZ
<b>FIC</b>	Kamloops 866-WXBRIEF (Toll free within Canada) or 866-541-4101 (Toll free within Canada & USA)
<b>PAD DATA</b>	54' x 44' wood
<b>COMM</b>	
<b>ATF</b>	Tofino Harbour tfc 122.15 3NM 1500 ASL exc area within Tofino CZ.
<b>CAUTION</b>	Kayaks on shore and oprg within arr/dep area, be cautious with downwash.

**TOMVALE ON** — See PLEVNA / TOMVALE

### TORONTO TERMINAL CONTROL AREA-VFR TRAFFIC

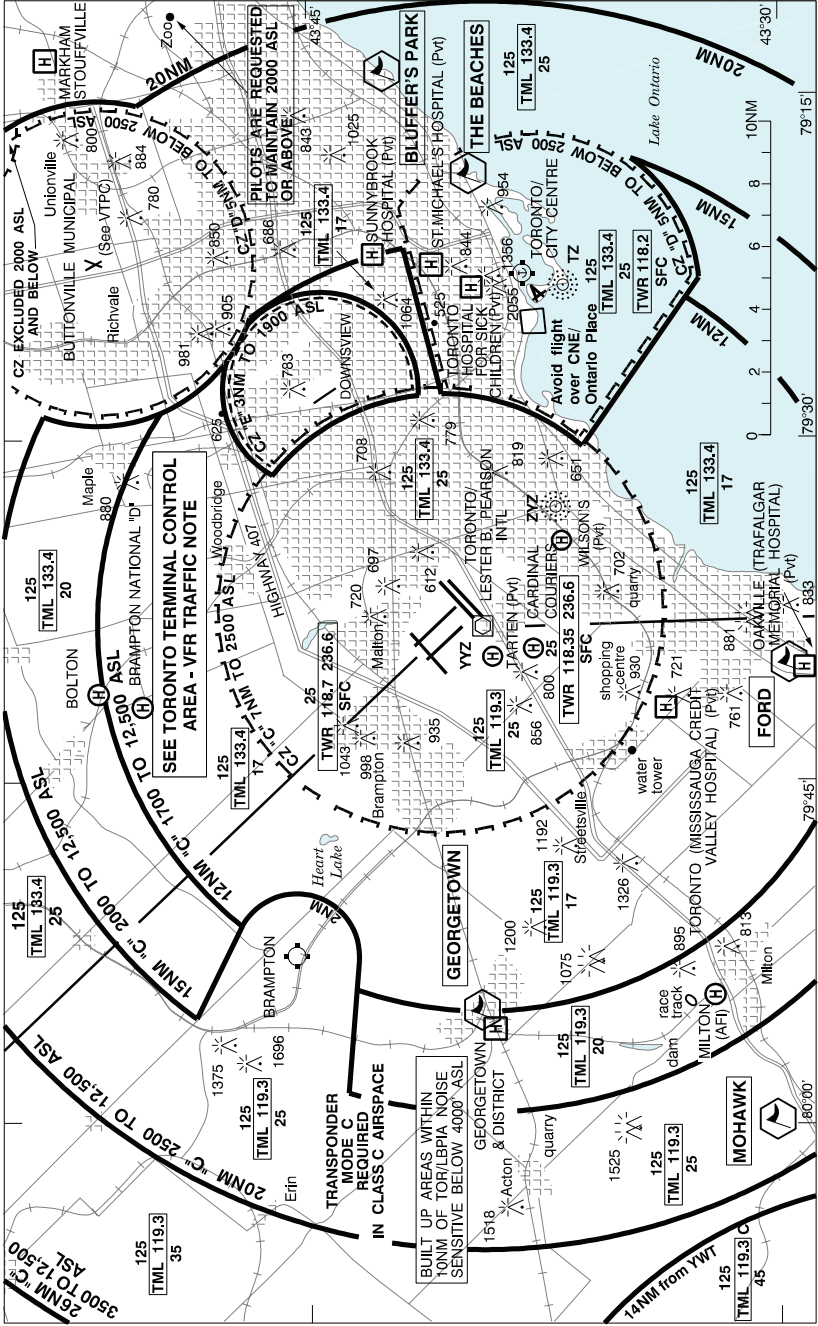
Clns to opr within the Toronto Class C airspace will only be given to acft equipped with functioning transponder & mode C unless prior approval obtained from ATC 905-676-4509 (IFR acft) or 3589 (VFR acft). VFR traffic may be rstd fr oprg in the Toronto Class C TCA dur periods of peak IFR traffic.

# CANADA FLIGHT SUPPLEMENT / GPH 205

Effective 0901Z 20 November 2008 to 0901Z 15 January 2009

B922 AERODROME/FACILITY DIRECTORY

## TORONTO VFR TERMINAL PROCEDURES CHART







# CANADA FLIGHT SUPPLEMENT / GPH 205

Effective 0901Z 20 November 2008 to 0901Z 15 January 2009

B924 AERODROME/FACILITY DIRECTORY

---

## TORONTO / BUTTONVILLE MUNI VFR TERMINAL PROCEDURES CHART (Cont'd)

LOCATION	IDENT	LAT/LONG
NEWMARKET	VCNMT	N44° 03.00 W79° 28.00
400 & HWY 7	VCFHS	N43° 47.45 W79° 32.50
AURORA	VCAUR	N44° 00.00 W79° 28.00
CATHEDRAL	VCATH	N43° 53.60 W79° 22.35
CP RAIL YARDS	VCPRR	N43° 48.20 W79° 15.00
GREENHOUSES	VCGHS	N43° 53.55 W79° 25.05
HWY 7 & HWY 48	VCHSF	N43° 52.45 W79° 15.60
HWY 7 & KENNEDY ROAD	VCKEN	N43° 51.70 W79° 18.20
IBM BUILDING	VCIBM	N43° 49.00 W79° 20.40
KING CITY	VCKNG	N43° 55.70 W79° 31.70
LAKE WILCOX	VCWLZ	N43° 56.90 W79° 26.10
MARKHAM WATER TOWER	VCWTR	N43° 53.20 W79° 14.70
MUSSELMANS LAKE	VCMUS	N44° 02.00 W79° 16.70
OAK RIDGES	VCOKR	N43° 56.70 W79° 27.30
OBSERVATORY	VCSEE	N43° 51.75 W79° 25.35
PARKWAY & 401	VCPWF	N43° 46.00 W79° 20.25
PRESTON LAKE	VCPRT	N43° 59.20 W79° 22.80
THREE SILOS	VCTSL	N43° 54.05 W79° 21.00
VICTORIA SQUARE	VCVIC	N43° 54.20 W79° 22.30
WONDERLAND	VCWND	N43° 50.50 W79° 32.50
STOUFFVILLE	VCSTF	N43° 58.00 W79° 15.00

---

---

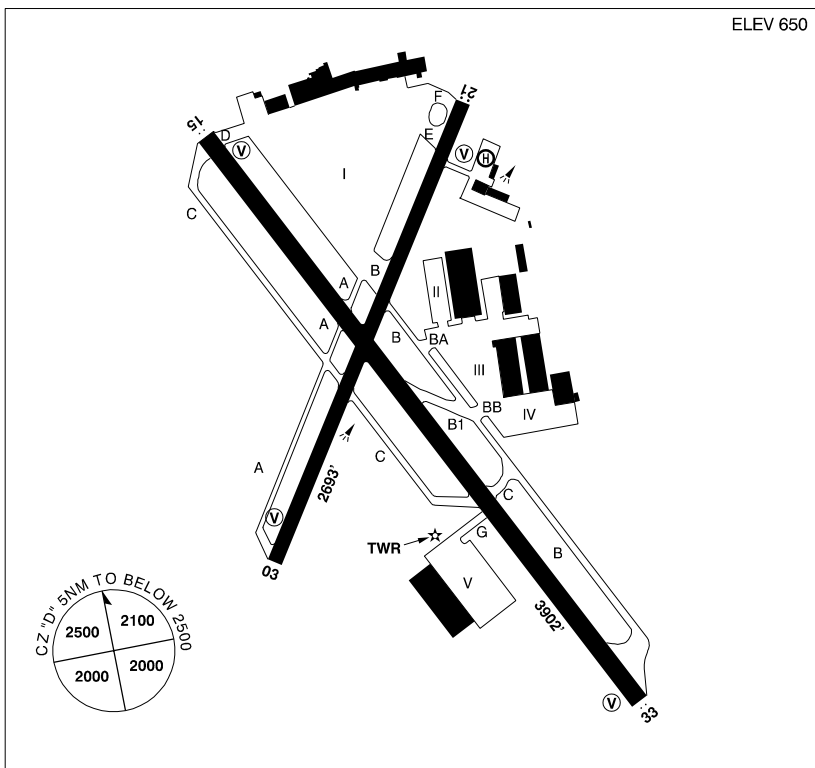
# CANADA FLIGHT SUPPLEMENT / GPH 205

Effective 0901Z 20 November 2008 to 0901Z 15 January 2009

AERODROME/FACILITY DIRECTORY B925

## TORONTO / BUTTONVILLE MUNICIPAL ON

CYKZ



<b>REF</b>	N43 51.44 W79 22 12 Adj N 11°W UTC-5(4) Elev 650' VTA A5000 F-21 LO6 T2 CAP
<b>OPR</b>	Toronto Airways Ltd 905-477-8100 Cert Ldg fees
<b>PF</b>	B-1,2 C-3,4,5,6
<b>CUST</b>	AOE/15 888-226-7277 13-01Z‡
<b>FLT PLN</b>	NOTAM FILE CYKZ Pilots to open/close VFR flt plan with London rdo 123.15 or by phone.
<b>FIC</b>	London 866-WXBRIEF (Toll free within Canada) or 866-541-4104 (Toll free within Canada & USA)
<b>WX</b>	METAR H24. TAF H24, issue times: 00, 06, 12 & 18Z.
<b>ACC</b>	Toronto 888-217-1241 or 905-676-4590/4591/4592
<b>PIK</b>	ATB, Toronto Airways Pilot Lounge (located in pilot training room), airside access
<b>SERVICES</b>	
<b>FUEL</b>	100LL, JA, (FSII avbl)
<b>OIL</b>	All
<b>S</b>	1,2,3,4
<b>PVT ADV</b>	Toronto Airways 123.5

# CANADA FLIGHT SUPPLEMENT / GPH 205

Effective 0901Z 20 November 2008 to 0901Z 15 January 2009

B926 AERODROME/FACILITY DIRECTORY

## TORONTO / BUTTONVILLE MUNICIPAL ON (Cont'd)

CYKZ

<b>RWY DATA</b>	Rwy 15(154°)/33(334°) 3902x100 asphalt Rwy 03(033°)/21(213°) 2693x80 asphalt
<b>TWY</b>	Twy C west of rwy 15/33 rstd to day use only.
<b>RCR</b>	Opr
<b>LIGHTING</b>	03-(TE ME) V1, 21-AS(TE ME) V1, 15-AS(TE HI) V1, 33-AS(TE HI) V1
<b>COMM</b>	<p><b>RCO</b> London rdo 123.55 (FISE) 126.7 (bcst)</p> <p><b>ATIS</b> 127.1 12-04Z‡</p> <p><b>GND</b> 121.8 12-04Z‡</p> <p><b>TWR</b> 124.8 119.9 (V) 12-04Z‡ (emerg only 905-477-6576)</p> <p><b>MF</b> tfc 124.8 (without gnd stn) 04-12Z‡ 5NM TO BELOW 2500 ASL (CAR 602.98)</p> <p><b>ARR</b> Toronto 133.4 358.1</p> <p><b>DEP</b> Toronto 133.4 363.8</p>
<b>NAV</b>	<p><b>NDB</b> KZ 248 (L) N43 56 01 W79 19 45 213° 4.4NM to thld rwy 21</p> <p><b>DME</b> IKZ 111.1 Ch 48 N43 51 21 W79 21 48 Unmonitored when TWR clsd</p> <p><b>LOC</b> IKZ 111.1 (Rwy 15) Unmonitored when TWR clsd</p>
<b>PRO</b>	<p>Heli avoid fit over village of Buttonville adj E. Pilots are requested to maintain 2000 ASL or above over Metropolitan Toronto Zoo (N43 49 05 W79 11 15). See Toronto/Buttonville Municipal VTPC for VFR reporting points &amp; heli routes. Tng activity btwn Toronto/Buttonville Municipal &amp; Oshawa aprts. See Planning, Ontario, Hazards to acft operations, Claremont tng area. Fits proh when TWR clsd unless approved by APM. Ctc opr for details</p> <p><b>NOISE</b> Pursuant to CAR 602.105, the following procedures are in effect.</p> <ol style="list-style-type: none"> <li>1. Rgt hand circuits rwy 15 (CAR 602.96). Circuit height 1650 ASL except as authorized by ATC.</li> <li>2. Turns to final apch will be made at or above 1150 ASL.</li> </ol> <p>DEPARTURES: Rwy 03, 21 &amp; 33 no turns below 1150 ASL. Rwy 15 after tkof track rwy centreline. No rgt turns below 1150 ASL (500 AGL). No left turns below 1650 ASL (1000 AGL).</p>
<b>CAUTION</b>	Wildlife frequently on rwys.

## TORONTO / CARDINAL COURIERS ON (Heli)

CPL8

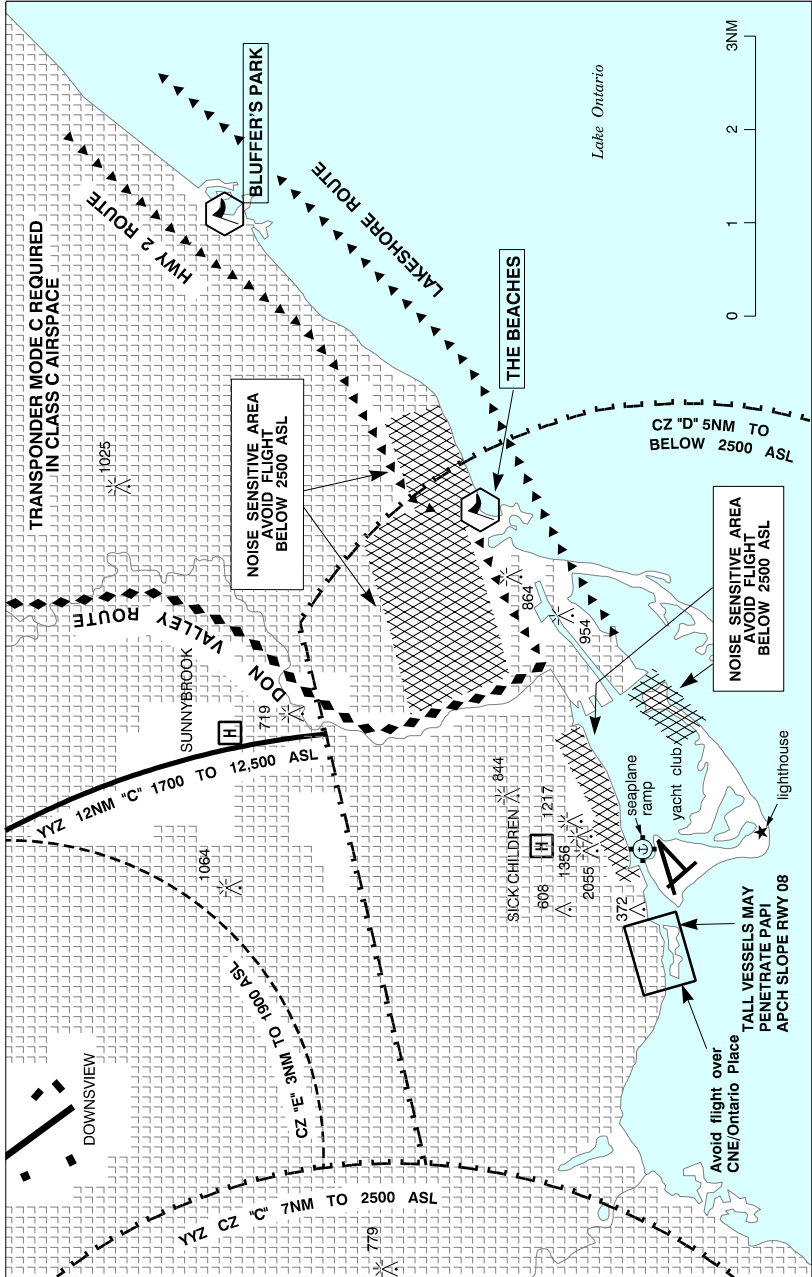
<b>REF</b>	N43 37 53 W79 39 53 Adj W 10°W UTC-5(4) Elev 612' VTA A5000	
<b>OPR</b>	Cardinal Couriers Ltd 905-507-4111 Cert PPR	
<b>FLT PLN</b>	NOTAM FILE CYYZ	
<b>FIC</b>	London 866-WXBRIEF (Toll free within Canada) or 866-541-4104 (Toll free within Canada & USA)	
<b>PAD DATA</b>	72' dia asphalt 96' dia asphalt & grass Max heli length 48'	
<b>RCR</b>	Opr	
<b>COMM</b>	<p><b>A/G</b> 122.925</p> <p><b>TWR</b> Toronto 118.35 118.7 (See Toronto VTPC)</p>	
<b>PRO</b>	Arr/dep 119° fr heli 12% slope. Heli rstd to multi-engine helicopters only. Ctc Toronto twr for specific instructions prior tkof/ldg.	

# CANADA FLIGHT SUPPLEMENT / GPH 205

Effective 0901Z 20 November 2008 to 0901Z 15 January 2009

AERODROME/FACILITY DIRECTORY B927

## TORONTO / CITY CENTRE VFR TERMINAL PROCEDURES CHART



# CANADA FLIGHT SUPPLEMENT / GPH 205

Effective 0901Z 20 November 2008 to 0901Z 15 January 2009

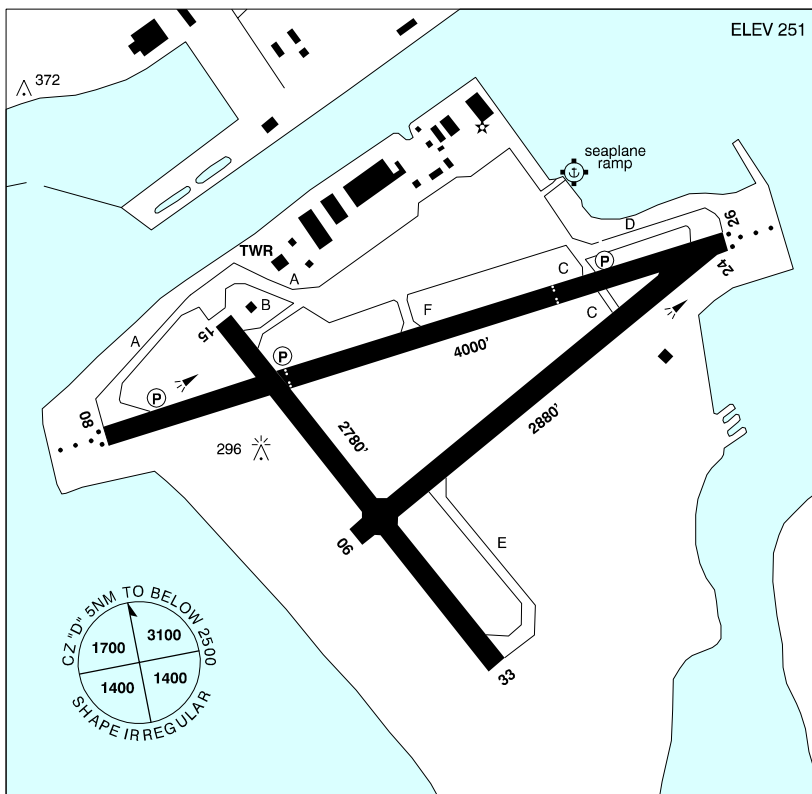
B928 AERODROME/FACILITY DIRECTORY

## TORONTO / CITY CENTRE VFR TERMINAL PROCEDURES CHART (Cont'd)

LOCATION	IDENT	LAT/LONG
THE BEACHES	VCBCH	N43° 39.80 W79° 18.40
BLUFFER'S PARK	VCBLF	N43° 42.50 W79° 14.00

### TORONTO / CITY CENTRE ON

CYTZ



<b>REF</b>	N43 37 39 W79 23 46 Adj S 11°W UTC-5(4) Elev 251' VTA A5000 F-21 LO6 T2 CAP RCAP
<b>OPR</b>	Toronto Port Authority 416-203-6942 Cert Ldg fees
<b>PF</b>	A-1 B-2,3,6 C-4,5
<b>CUST</b>	AOE/15 888-226-7277 13-01Z‡
<b>FLT PLN</b>	NOTAM FILE CYTZ Pilots to open/ close VFR flt plan with London rdo 123.15 or by phone.
<b>FIC</b>	London 866-WXBRIEF (Toll free within Canada) or 866-541-4104 (Toll free within Canada & USA)
<b>ACC</b>	Toronto 905-676-4590/4591/4592 or 888-217-1241
<b>WX</b>	METAR H24 Legacy AWOS. TAF 11-04Z‡, issue times: 00, 11, 18Z (DT 00, 10, 12, 18Z)
<b>DUAT</b>	Porter FBO

# CANADA FLIGHT SUPPLEMENT / GPH 205

Effective 0901Z 20 November 2008 to 0901Z 15 January 2009

AERODROME/FACILITY DIRECTORY B929

## TORONTO / CITY CENTRE ON (Cont'd)

CTYZ

<b>SERVICES</b>	1145-0345Z± dly When ferry not running no access to aprt. Hrs of ferry operation are 1030-05Z±.
<b>FUEL</b>	100LL, JA-1
<b>OIL</b>	All
<b>S</b>	1,3
<b>ARFF</b>	4 1145-0345Z± O/T call out chg 2 hrs PNR
<b>PVT ADV</b>	Esso Aviation 416-361-1100 123.2 12-23Z±; Porter FBO 416-203-2424 123.35 1130-0345Z±; Esso (Toronto City Aviation) 416-361-1100 12-23Z± Opr Seaplane dock/ramp
<b>RWY DATA</b>	Rwy 08(082°)/26(262°) 4000x150 asphalt Rwy 06(061°)/24(241°) 2880x150 asphalt Rwy 15(151°)/33(331°) 2780x150 asphalt
<b>RCR</b>	Opr 1145-0345Z± CRFI/RSC avbl ltd hrs. PLR/PCN
<b>LIGHTING</b>	08-AS(TE HI) P1 4.0°, 26-AZ(TE HI) AP 4.8° MEHT 63', 15-AP 5.5° See CAUTION PAPI P1 apch rwy 08 and APAPI apch rwy 26. Rwys 08 & 26 - three white inset pre-thld centerline lgts. Two pairs of inset white lgts 1099' upwind of each thld mark end of TDZ. Yellow rwy edge lgts for final 1362' rwy 26 and final 1289' rwy 08.
<b>COMM</b>	<b>ATIS</b> 133.6 1145-04Z± dly <b>GND</b> 121.7 1145-04Z± dly <b>TWR</b> City 118.2 119.2 226.5 (V) 1145-04Z± dly (emerg only 416-973-9240) <b>ATF</b> tfc 118.2 04-1145Z± dly within CZ TO BELOW 2500 ASL <b>ARR</b> Toronto 133.4 358.1 <b>DEP</b> Toronto 133.4 363.8
<b>NAV</b>	<b>VOT</b> 110.4 <b>NDB</b> GIBRALTAR POINT TZ 257 (L) N43 36 46 W79 23 08 343° 1.0NM to A/D <b>DME</b> ITZ 110.15 Ch 38(Y) N43 37 38 W79 23 58 (296') at A/D. ITZ DME unmonitored when twr clsd. DME not usable within 1.0 DME. <b>ILS</b> ITZ 110.15 (Rwy 08) Ch 38(Y) RVR. ITZ ILS unmonitored when twr clsd. ICR 110.15 (Rwy 26) RVR. ICR ILS unmonitored when twr clsd. LOC reliable only within 10° either side of centerline.
<b>PRO</b>	No ops outside of published hrs except MEDEVAC. Rgt hand circuits rwys 06, 08 & 15 (CAR 602.96). Noise abatement. All jet acft (exc MEDEVAC fits) and certain types of propeller acft are proh fr utilizing the aprt. Pilots should check with aprt ops prior to arr. Pilots are requested to maintain 2000 ASL or above over Metropolitan Toronto Zoo (N43 49 05 W79 11 15). Avoid overflight of noise sensitive areas, see Toronto/City Centre VTPC for east VFR routing. Tng activity btwn Toronto/Butonville Municipal & Oshawa aprts. See Planning, Ontario, Hazards to acft operations, Claremont tng area.
<b>CAUTION</b>	All arr/dep acft to avoid fit over CNE/Ontario Place. For details see Toronto VTPC and Toronto/City Centre sketch. Frequent banner towing activity over CNE in fixed pattern 1500 ASL and below. Vessels up to 120' (366 ASL) in vic of final apch to all rwys. PAPI P1 apch slope rwy 08 will ensure clearance over tall vessels. DME/glidepath antenna 296 ASL (45 AGL) at A/D, see sketch. APAPI rwy 15 apch slope 5.5°. APAPI rwy 26 apch slope 4.8°. APAPI apch slope rwy 26 will ensure clearance over vessels and chimney (N43 38 45 W79 19 59, 954 ASL (700 AGL) 2.6NM fr thld 26. Secondary ERS subject to availability of ferry ops. Flagpole 372 ASL (121 AGL) located 0.3NM N of thld rwy 15 & adj W of extended rwy centreline. Wind turbine aprx 1NM W of aprt at CNE 584 ASL (323 AGL) N43 37 52 W79 25 29. Extv bird activity on A/D.

# CANADA FLIGHT SUPPLEMENT / GPH 205

Effective 0901Z 20 November 2008 to 0901Z 15 January 2009

B930 AERODROME/FACILITY DIRECTORY

## TORONTO / DOWNSVIEW ON

**CYZD**

<b>REF</b>	N43 44 34 W79 27 56 Adj N 11°W UTC-5(4) Elev 652' VTA A5000 F-21 LO6 HI5 T2 CAP	
<b>OPR</b>	DeHavilland Inc 416-375-3933 Cert PPR	
<b>PF</b>	B-1,2 C-3,4,5,6	
<b>FLT PLN</b>	NOTAM FILE CYKZ	
<b>FIC</b>	London 866-WXBRIEF (Toll free within Canada) or 866-541-4104 (Toll free within Canada & USA)	
<b>ACC</b>	Toronto 905-676-4590/4591/4592 or 888-217-1241	
<b>DUAT</b>	DeHavilland ops 416-375-3933/3939	
<b>SERVICES</b>	24 hr PPR all acft. Acft ctc DeHavilland ops 416-375-3933/3939	
<b>FUEL</b>	JA-1, SA	
<b>S</b>	1	
<b>JASU</b>	10/15	
<b>PVT ADV</b>	DeHavilland ops (VE9JS) 130.075	
<b>RWY DATA</b>	Rwy 15(153°)/33(333°) 7000x200 asphalt	
<b>RCR</b>	Opr PLR/PCN.	
<b>LIGHTING</b>	15-AS(TE ME) P2, 33-(TE ME) P2	
<b>COMM</b>		
<b>MF</b>	UNICOM 13-23Z± Mon-Fri O/T tfc 126.2 3NM 1900 ASL (CAR 602.98)	
<b>ARR</b>	Toronto 133.4 358.1	
<b>DEP</b>	Toronto 133.4 363.8	
<b>PRO</b>	Rgt hand circuits rwy 33 (CAR 602.96). Tfc patterns. Fixed wing 1500 ASL. Extv bird activity on A/D. Ctc DeHavilland ops for status & permission to use A/D. Pilots are requested to maintain 2000 ASL or above over Metro Toronto Zoo (N43 49 05 W79 1115). Prior to taxi, ctc Downsview UNICOM 126.2 for ATC clearances & aprt info.	

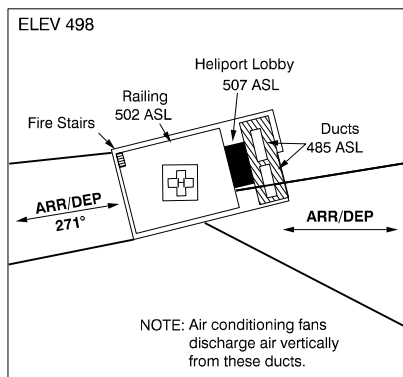
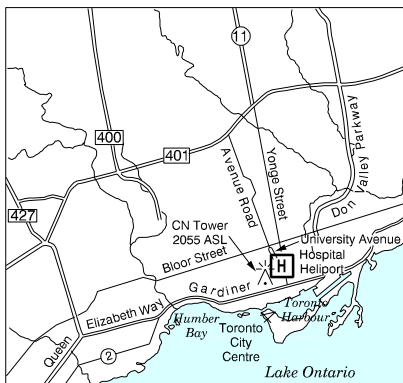
# CANADA FLIGHT SUPPLEMENT / GPH 205

Effective 0901Z 20 November 2008 to 0901Z 15 January 2009

AERODROME/FACILITY DIRECTORY B931

## TORONTO (HOSP FOR SICK CHILDREN) ON (Heli)

CNW8



<b>REF</b>	N43 39 W79 23 11°W UTC-5(4) Elev 498' VTA A5000
<b>OPR</b>	Hosp for Sick Children 416-813-7500 Cert PPR
<b>FLT PLN</b>	NOTAM FILE CYTZ
<b>FIC</b>	London 866-WXBRIEF (Toll free within Canada) or 866-541-4104 (Toll free within Canada & USA)
<b>PAD DATA</b>	Roof top 86' dia 33,000 lbs Rstd max heli length 57.5'
<b>LIGHTING</b>	RY(LO) RF(FL)
<b>COMM</b>	
<b>TWR</b>	Toronto 118.35 118.7 City 118.2 119.2
<b>A/G</b>	129.275
<b>PRO</b>	Two Arr/dep paths to/fr heli: W brg 271° and E Arr/dep path on E offset to S, (tfc passes S of chimney), see diagram. Ctc Medcom 416-326-6282 control access of all medical flts. Heli rstd to multi-engine heli capable of remaining at least 4.5M (15') above all obstacles within arr/dep area when operating in accordance with the aircraft flight manual with one engine inoperative.





# CANADA FLIGHT SUPPLEMENT / GPH 205

Effective 0901Z 20 November 2008 to 0901Z 15 January 2009

AERODROME/FACILITY DIRECTORY B933

## TORONTO / LESTER B. PEARSON INTL ON (Cont'd)

CYYZ

<b>FLT PLN</b>	NOTAM FILE CYYZ
<b>FIC</b>	London 866-WXBRIEF (Toll free within Canada) or 866-541-4104 (Toll free within Canada & USA)
<b>WX</b>	METAR H24. TAF H24, issue times: 00, 03, 06, 09, 12, 15, 18 & 21Z.
<b>ACC</b>	Toronto 905-676-4590/4591/4592 or 888-217-1241. Flt pln by Fax at 905-676-5044 & include phone numbers where pilot can be reached prior to dep.
<b>DUAT</b>	Esso Avitat; Shell Aerocentre; Skycharter
<b>SERVICES</b>	
<b>FUEL</b>	100, 100LL, 115, JA, JA-1, JB, FSII, HPR (CON S IP JA-1, FSII)
<b>OIL</b>	All
<b>S</b>	1,2,3
<b>ARFF</b>	9
<b>SUP FL</b>	D & A-ice, LHOX
<b>JASU</b>	CE16
<b>PVT ADV</b>	Shell Aerocentre 122.95 H24; Skycharter Ltd 129.75 1130-08Z± Skyservice/Esso Avitat 128.95 H24
<b>MIL CON</b>	Landmark Aviation (Shell) 905-677-5777
<b>RWY DATA</b>	Rwy 15L(147°)/33R(327°) 11,050x200 asphalt Rwy 15L last 4230' 0.57% down Rwy 15L RVR 1200 (1/4 sm)/33R RVR 600 Rwy 15R(147°)/33L(327°) 9088x200 asphalt Thlds 15R & 33L displ 588 Rwy 15R RVR 1200 (1/4 sm)/33L RVR 1200 (1/4 sm) Rwy 05(057°)/23(237°) 11,120x200 asphalt/concrete Thld 05 displ 135' Rwy 05 RVR 600/23 RVR 1200 (1/4 sm) Thld 23 displ 485' Rwy 05 first 3900' 0.35% down Rwy 06L(057°)/24R(237°) 9697x200 asphalt Thld 24R displ 197' Rwy 06L RVR 600/24R RVR 1200 (1/4 sm) Rwy 06R(057°)/24L(237°) 9000x200 asphalt Rwy 06R RVR 1200 (1/4 sm)/24L RVR 1200 (1/4 sm) Departures from holding bay inner centerlines rwy 06L, 24R and 05/H6 substract 263' from declared distances.
<b>TWY</b>	Twy K is <u>uncontrolled</u> & is rstd to acft with a wing span of 38m/124'. (B757) or less & an Aircraft Load Rating of 9.0 or less. Other acft may be auth with prior appr from opr (416-776-3030). Design spd for C2, B2, H3, D6, D4, D2, D1, D3, D5 & D7 is 50 kt (93 kph). Design spd for J2, M1, M3, F2 & F4 is 45 kt (85 kph). All other rapid exits designed for an exit speed of 35 kt (65kph). Do not enter twy Q without specific clearance from ATC. Rwy 23 depts requiring full length must notify gnd ctl on initial contact. During CAT II/III arrivals 05 departures shall be from H6
<b>APRON</b>	At all T1, T1 East Satellite, T3, Infield & FedEx Apron/Parking areas, all acft <u>must</u> contact the applicable Apron Advisory prior to pushback & taxi. Asphalt apron sfc E of positions 5G and 6F to 101A rstd to acft with a wingspan of 28.4m/93' (DH8-400) or less & an acft load rating of 8.0 or less. Outer/East loop btwn 7D-7E-8E-8D rstd to acft with a wingspan of 51.97m/170.5' or less. Outer/North loop btwn 9C-9D-10D-10C restricted to wingspan of 35.9m/118' or less. Refer to CAP parking areas (Terminal 1) for details.
<b>RCR</b>	Opr CRFI, PLR/PCN
<b>LIGHTING</b>	05-AL(TE HI A TDZL) P3, 23-AN(TE HI A TDZL) P3 06L-AL(TE HI A TDZL) P3, 24R-AN(TE HI A) P3 06R-AN(TE HI A) P3, 24L-AN(TE HI A) P3 15R-AN(TE HI) P3, 33L-AN(TE HI) P3 15L-AN(TE HI A) P3, 33R-AN(TE HI A) P3

# CANADA FLIGHT SUPPLEMENT / GPH 205

Effective 0901Z 20 November 2008 to 0901Z 15 January 2009

B934 AERODROME/FACILITY DIRECTORY

## TORONTO / LESTER B. PEARSON INTL ON (Cont'd)

CYYZ

<b>COMM</b>	
<b>RCO</b>	London rdo 123.275 (FISE)
<b>ATIS</b>	120.825
<b>CLNC DEL</b>	121.3 all dep acft ctc clnc del dur 12-04Z‡
<b>APRON ADV</b>	North apron 122.275 (122.825) South apron 122.075 (122.825) Tml 3 122.875 (North apron 122.275 C34 to C41 only) FedEx, Infield Terminal, Cargo West 122.275 (North apron), Skyservice/Avitat, 3 Bay Hgr Aprons 122.075 (South apron).
<b>GND</b>	118.0 119.1 121.65 121.9 275.8
<b>TWR</b>	Toronto 118.35 118.7 236.6 (E) (emerg only 905-676-3588)
<b>ARR</b>	124.475 125.4 132.8 358.1
<b>DEP</b>	127.575 128.8 363.8
<b>VFR ADV</b>	119.3 133.4 253.1 (See Toronto VFR Terminal Procedures Chart)
<b>NAV</b>	
<b>VOT</b>	114.8
<b>NDB</b>	QUEENSWAY ZYZ 368 (M) N43 37 10 W79 32 52 327° 4.2NM to A/D WOODHILL ZTO 403 (L) N43 44 18 W79 42 11 147° 3.8NM to A/D MEADOWVALE ZLP 341 (L) N43 37 40 W79 43 52 057° 4.1NM to A/D REXDALE ZDH 385 (L) N43 44 16 W79 34 17 237° 3.8NM to A/D
<b>VOR/DME</b>	YYZ 112.15 Ch 58(Y) N43 39 29 W79 37 54 (541') at A/D PEARSON YTP 116.55 Ch 112(Y) N43 40 18 W79 39 51 (580') at A/D
<b>DME</b>	IDP 111.95 Ch 56(Y) N43 39 40 W79 37 12 (552') at A/D IJS 109.1 Ch 28 N43 39 47 W79 37 07 (558') at A/D INV 109.3 Ch 30 N43 40 32 W79 35 58 (565') at A/D ITO 110.95 Ch 46(Y) N43 40 13 W79 38 04 (561') at A/D
<b>ILS</b>	ICV 111.95 (Rwy 06R) RVR; IDP 111.95 (Rwy 24L) RVR IJS 109.1 (Rwy 06L) RVR; ILP 110.95 (Rwy 15R) RVR INV 109.3 (Rwy 24R) RVR; ITO 110.95 (Rwy 33L) RVR ITX 109.7 (Rwy 05) RVR; ILE 110.3 (Rwy 33R) RVR IRW 110.5 (Rwy 15L) RVR; IYZ 111.5 (Rwy 23) RVR
<b>RESTRICTIONS</b>	
OPERATING RESTRICTIONS	
The following restrictions are in effect:	
<ol style="list-style-type: none"> <li>1.             <ol style="list-style-type: none"> <li>a) All acft oprg on a scheduled and repetitive basis to/fr the A/D are rqrd to obtain a slot for all ops.</li> <li>b) All other acft oprg to/fr the A/D are rqrd to obtain an arr or dep reservation for that op during the hrs 20-0059Z‡ Sun-Fri (Sat exempted). Heli, medevacs, police mil emerg flts &amp; diverting acft where CYYZ is the WX altn and all arr flts of caribbean points of origin and fr points south of lat 25 degs. North are exempted from this requirement. call 416-776-3480 up to 2 days prior ops.</li> </ol> </li> <li>2. Tng not permitted unless auth by the apt ops duty mgr &amp; prior perms obtained fr ATC. Apt ops duty mgr 416-776-3030, Toronto ACC Flow Management Unit 905-676-3528 or 1-800-268-4831.</li> <li>3. All maintenance runs/runups must be conducted in accordance with GTAA APRON &amp; MAINTENANCE RUN PROCEDURES (avbl from opr-tel 416-776-7581).</li> </ol>	

# CANADA FLIGHT SUPPLEMENT / GPH 205

Effective 0901Z 20 November 2008 to 0901Z 15 January 2009

AERODROME/FACILITY DIRECTORY B935

## TORONTO / LESTER B. PEARSON INTL ON (Cont'd)

CYYZ

### RESTRICTIONS (Cont'd)

#### NOISE ABATEMENT RESTRICTIONS

The following restrictions are in effect:

1. Noise abatement pro apply to all acft, (VFR & IFR) wx permitting 04-12Z±.
2. Subject to paragraph c) or d), arrivals and departures of acft are rstd as per the table below:

Aircraft	Restricted Hours - local time
Noise certification or type	Arrivals & Departures
All non-noise certificated jet aircraft	2000 - 0800
All ICAO annex 16, vol 1 Chapter 2 & equivalent aircraft	0000 - 0700
All ICAO annex 16, vol 1 Chapter 3 & equivalent aircraft	0030 - 0630
All other aircraft	0030 - 0630

- a) Non-noise certificated jet powered acft are prohibited from departing on Runways 05, 06L, 06R, 15L, 15R and 33L.
  - b) Between 0000 and 0630 local time, departures are prohibited on rwys 05, 06L, 06R, 15L and 15R and arrivals are prohibited on rwys 24R, 24L, 23, 33R, 33L and 15R unless assigned by ATC.
  - c) All acft operating on a scheduled and repetitive basis are rqr'd to obtain an extension or an exemption to opr dur the rstd hrs. Submit requests for oprg extensions on the day of operation to the Airport Operations Duty Manager with justification at 416-776-3030 (fax 416-776-5615). For advance exemption requests or information, make submission in writing to the Senior Manager, Facility Allocation, Greater Toronto Airports Authority, Toronto Pearson International Airport, P.O. Box 6031, Toronto AMF, Ontario, L5P 1B2 (fax 416-776-3483).
  - d) **All other oprs are rqr'd to obtain permission to opr dur the rstd hrs** by contacting the Airport Duty Manager on the day of operation at 416-776-3030.
3. VFR acft 04-12Z±: climb rwy hdg to 3600 ASL. When wx does not permit climbing to 3600 ASL, climb rwy hdg to max alt allowed by rules for VFR flt in controlled airspace.

### PRO

#### IFR CLEARANCE ACKNOWLEDGEMENT

Acknowledgement of IFR clncs with Toronto twr clnc del shall include the acft call sign, transponder code & name of SID pro that was assigned in the IFR clnc.

When informed by ATIS or by the arr controller that simultaneous ILS apchs are in progress, pilots shall advise the arr controller immediately of any avionics unsvc or if unable to comply. In VFR wx acft may be vectored to intercept the lczr at a point above the GP.

Clnc to opr within the Toronto class C airspace will only be given to acft equipped with functioning transponder & mode C unless prior approval obtained from ATC 905-676-4509 (IFR acft) or 3589 (VFR acft).

#### MINIMUM RUNWAY OCCUPANCY TIME

Due to min apch spacing, arriving acft should exit rwy as soon as possible. For departing acft, ATC will employ conditional line-up clncs as follows: "Taxi to position after the departing (acft type)." Pilots should ensure that they are able to commence tkof roll immediately after tkof clnc is issued.

#### CROSSWIND CONDITIONS

Anticipate landing 05/23 & 06L/24R in crosswinds up to 25 kt at 90°.

#### DURING SNOW CLEARING OPERATIONS

Acft should be prepared to dep from any rwy (incl 06L & 06R).

# CANADA FLIGHT SUPPLEMENT / GPH 205

Effective 0901Z 20 November 2008 to 0901Z 15 January 2009

B936 AERODROME/FACILITY DIRECTORY

## TORONTO / LESTER B. PEARSON INTL ON (Cont'd)

CYYZ

<b>PRO (Cont'd)</b>	<p><b>DURING DE-ICING OPERATIONS</b></p> <p>Pad 1</p> <ul style="list-style-type: none"> <li>- Acft with a wingspan of 27.5m/90 ft &amp; smaller may use north/south lanes.</li> <li>- Acft with a wingspan of 27.6m/91 ft to 64.9m/213 ft must use centre lane.</li> <li>- Acft with a wingspan greater than 64.9m/213 ft not authorized for de-icing (taxi only).</li> </ul> <p>Pads 2 to 6</p> <ul style="list-style-type: none"> <li>-Centre lanes will accomodate all acft.</li> <li>-Acft with a wingspan of 35.9m/118 ft &amp; smaller may use north/south lanes</li> </ul> <p>See CAP Central De-icing Facility Chart</p> <ol style="list-style-type: none"> <li>1. Notify Apron Advisory prior to pushback, when de-icing is required;</li> <li>2. On twys T, V, &amp; E, hold short of de-icing &amp; when directed by Ground Control monitor Pad Control on 131.175. Follow Pad Control taxi instructions to the entrance of the de-icing pad;</li> <li>3. When directed by Pad Control ctc ICEMAN on the assigned freq (129.625 or 131.375);</li> <li>4. Follow instruction &amp; guidance lights to staging &amp; de-icing bays;</li> <li>5. After de-icing, do not move acft. Ctc Pad Control on 131.175 when instructed by ICEMAN to obtain taxi instruction;</li> <li>6. Follow Pad Control instruction to designated exit points. When instructed by Pad Control ctc Ground Control on assigned freq.</li> </ol>
---------------------	---

## TORONTO CENTRE (emerg only 905-676-4509)

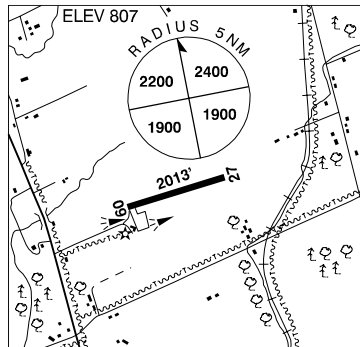
CZYZ

124.925 **124.925** **125.775** 127.0 132.475 **132.475** 132.8 **134.575** **134.925** **236.8** 294.5  
**344.3** 354.3 **374.5**  
 Coehill 124.675  
**Elliot Lake** 135.4 260.9  
**Hamilton** 290.8  
**Kitchener / Waterloo** 128.275 268.75  
**London** 135.3 135.625 **135.825** 266.3  
**Midland** 124.025  
**Moosonee** 133.725 **133.725** (Below FL290) 225.075 **225.075** (Below FL290)  
**North Bay** 121.225 **121.225** 127.250 233.4 356.3 **356.3**  
**Peterborough** 134.25  
**St. Catharines** 133.3  
**Sarnia** 134.375 254.9  
**Sault Ste. Marie** 132.65 **134.425** **227.3** 344.5  
**Sudbury** 135.5 **135.5** 285.7 **285.7**  
**Timmins** 128.3 **128.3** (Below FL290) 226.3 **226.3** (Below FL290)  
**Wawa** 124.075 298.6  
**Warton** 132.575 **124.375** 290.6

## TORONTO / MARKHAM ON

CNU8

<b>REF</b>	N43 56 09 W79 15 44 2.6N 11°W UTC-5(4) Elev 807' VTA A5000 F-21
<b>OPR</b>	Markham Aprt Inc 905-642-4536 416-720-1465 Reg 14-22Z† PPR
<b>PF</b>	B-1 C-2,3,4,5,6
<b>FLT PLN</b>	NOTAM FILE CYKZ
<b>FIC</b>	London 866-WXBRIEF (Toll free within Canada) or 866-541-4104 (Toll free within Canada & USA)
<b>SERVICES</b>	
<b>FUEL</b>	100LL
<b>RWY DATA</b>	Rwy 09/27 2013x50 asphalt
<b>LIGHTING</b>	09-(TE ME), 27-(TE ME) PNR Opr



# CANADA FLIGHT SUPPLEMENT / GPH 205

Effective 0901Z 20 November 2008 to 0901Z 15 January 2009

AERODROME/FACILITY DIRECTORY B937

## TORONTO / MARKHAM ON (Cont'd)

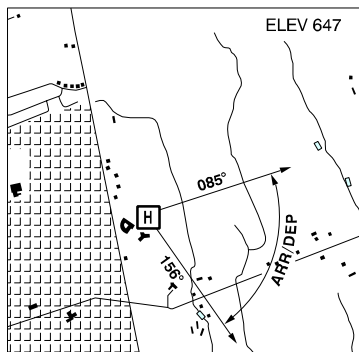
CNU8

<b>COMM</b>	
<b>ATF</b>	UNICOM ltd hrs O/T tfc 122.8 5NM 3500 ASL excluding portion within CYKZ CZ which is capped at 2000 ASL.
<b>PRO</b>	Tng activity btwn Toronto/Buttontville Municipal & Oshawa aprts. See Planning, Ontario, Hazards to acft operations, Claremont tng area.
<b>CAUTION</b>	Glider activity, Sat-Sun, hols, Apr-Jun & Sept-Nov. Ldg on grass N of rwy. See NOTAM.

## TORONTO / MARKHAM STOUFFVILLE ON (Heli)

CPH7

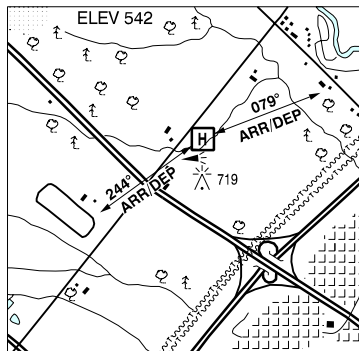
<b>REF</b>	N43 53 W79 14 Adj 11°W UTC-5(4) Elev 647' VTA A5000
<b>OPR</b>	Markham Stouffville Hosp 905-472-7023 Cert PPR
<b>FLT PLN</b>	NOTAM FILE CYKZ
<b>FIC</b>	London 866-WXBRIEF (Toll free within Canada) or 866-541-4104 (Toll free within Canada & USA)
<b>PAD DATA</b>	86' x 100' 42' concrete, remainder turf 114' x 128' Rstd max heli length 57.5'
<b>RCR</b>	Opr
<b>LIGHTING</b>	RY(LO) RF(FL)
<b>COMM</b>	
<b>A/G</b>	Ambulance dispatch 129.275
<b>PRO</b>	Arr/dep btwn 085°-156° fr heli.



## TORONTO (MISSISSAUGA CREDIT VALLEY HOSP) ON (Heli)

CPK6

<b>REF</b>	N43 33 41 W79 42 09 10°W UTC-5(4) Elev 542' VTA A5000
<b>OPR</b>	Credit Valley Hosp 905-813-2200 Cert PPR
<b>FLT PLN</b>	NOTAM FILE CYBM
<b>FIC</b>	London 866-WXBRIEF (Toll free within Canada) or 866-541-4104 (Toll free within Canada & USA)
<b>PAD DATA</b>	108' dia 144' dia concrete Max heli length 72'
<b>RCR</b>	Opr
<b>LIGHTING</b>	DR RY(LO) RF(FH) ARCAL-123.2 type K one intensity only, key mic 3 times to turn floodlights off
<b>COMM</b>	
<b>TWR</b>	Toronto 118.35 118.7
<b>A/G</b>	Ambulance dispatch 129.275
<b>PRO</b>	Arr/dep 079° & 244° fr heli 16% slope
<b>CAUTION</b>	Chimney SSW aprx 150' AGL. Communications twr SW aprx 100' AGL. P-lines N & W all lgtd & marked.



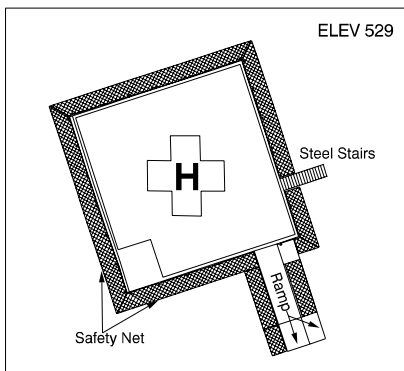
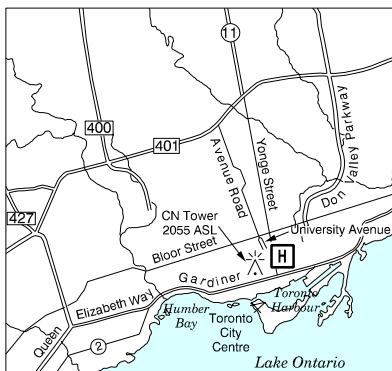
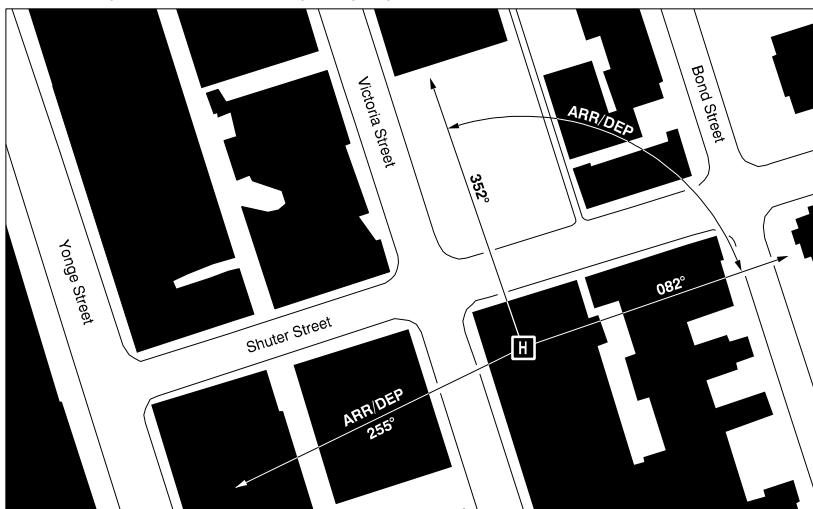
# CANADA FLIGHT SUPPLEMENT / GPH 205

Effective 0901Z 20 November 2008 to 0901Z 15 January 2009

B938 AERODROME/FACILITY DIRECTORY

## TORONTO (ST. MICHAEL'S HOSP) ON (Heli)

CTM4



<b>REF</b>	N43 39 15 W79 22 42 11°W UTC-5(4) Elev 529' VTA A5000
<b>OPR</b>	St.Michael's Hospital 416-864-5323 Cert PPR
<b>FLT PLN</b>	NOTAM FILE CYTZ
<b>FIG</b>	London 866-WXBRIEF (Toll free within Canada) or 866-541-4104 (Toll free within Canada & USA)
<b>PAD DATA</b>	60' x 60' aluminum touchdown pad 106' x 106' max heli length 52.5'
<b>RCR</b>	Opr
<b>LIGHTING</b>	RY(LO) Green FL(LO)
<b>COMM</b>	
<b>TWR</b>	Toronto 118.35 118.7 City 118.2 119.2
<b>A/G</b>	Ambulance dispatch 129.275
<b>PRO</b>	Arr/dep 255° fr heli & 352°-082° fr heli 8% slope. Heli rstd to multi-engine helicopters capable of remaining at least 4.5m (15') abv all obstacles within arr/dep area when operating in accordance with the acct fit manual with one engine inoperative.
<b>CAUTION</b>	High buildings all quadrants.

# CANADA FLIGHT SUPPLEMENT / GPH 205

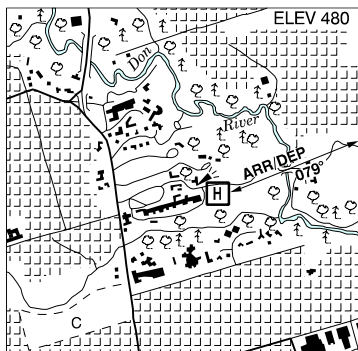
Effective 0901Z 20 November 2008 to 0901Z 15 January 2009

AERODROME/FACILITY DIRECTORY B939

## TORONTO (SUNNYBROOK MEDICAL CENTRE) ON (Heli)

CNY8

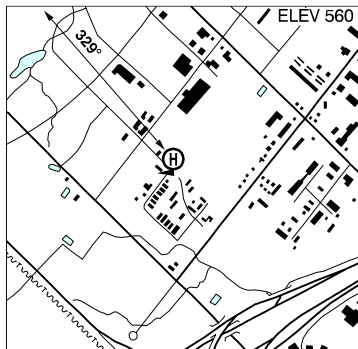
<b>REF</b>	N43 43 21 W79 22 14 Adj 11°W UTC-5(4) Elev 480' VTA A5000
<b>OPR</b>	Sunnybrook Medical Centre 416-480-4567 Cert PPR
<b>FLT PLN</b>	NOTAM FILE CYTZ
<b>FIC</b>	London 866-WXBRIEF (Toll free within Canada) or 866-541-4104 (Toll free within Canada & USA)
<b>PAD DATA</b>	86' dia asphalt 114' x 114' (4' perimeter fence) Rstd max heli length 57.5'
<b>RCR</b>	Opr
<b>LIGHTING</b>	DR RY(LO) RF(FL)
<b>COMM</b>	
<b>TWR</b>	Toronto 118.35 118.7 City 118.2 119.2
<b>A/G</b>	ambulance dispatch 129.275
<b>PRO</b>	Single tkof/apch flt path brg 079° M fr heli.



## TORONTO / TARTEN ON (Heli)

CPA5

<b>REF</b>	N43 39 07 W79 39 29 Adj W 10°W UTC-5(4) Elev 560' VTA A5000
<b>OPR</b>	Tarten Equipment Ltd 905-670-1704 Cert PPR
<b>FLT PLN</b>	NOTAM FILE CYYZ
<b>FIC</b>	London 866-WXBRIEF (Toll free within Canada) or 866-541-4104 (Toll free within Canada & USA)
<b>PAD DATA</b>	65' x 65' asphalt 85' x 85' Rstd max heli length 43.3'
<b>RCR</b>	Opr
<b>COMM</b>	
<b>TWR</b>	Toronto 118.35 118.7 (See Toronto VTPC)
<b>PRO</b>	Single arr/dep path 329° fr heli. Ctc Toronto twr for specific instructions prior tkof & ldg. Heli on 208° rad/2.0 DME fr YYZ VOR.





# CANADA FLIGHT SUPPLEMENT / GPH 205

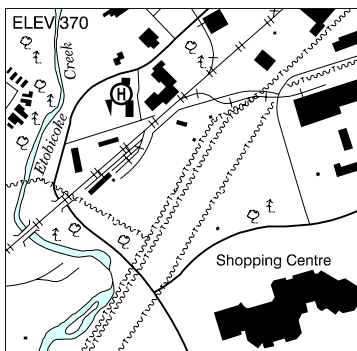
Effective 0901Z 20 November 2008 to 0901Z 15 January 2009

B940 AERODROME/FACILITY DIRECTORY

## TORONTO / WILSON'S ON (Heli)

CPY5

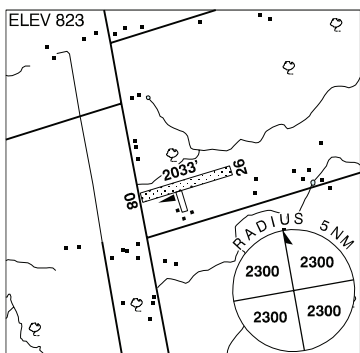
<b>REF</b>	N43 37 04 W79 33 49 Adj SW 10°W UTC-5(4) Elev 370' VTA A5000
<b>OPR</b>	Wilson's Heli-Trans 416-626-1243 FAX 416-626-3546 Cert PPR
<b>FLT PLN</b>	NOTAM FILE CYYZ
<b>FIC</b>	London 866-WXBRIEF (Toll free within Canada) or 866-541-4104 (Toll free within Canada & USA)
<b>PAD DATA</b>	45' x 45' wood, rooftop Rstd max length of 30'
<b>RCR</b>	Opr
<b>COMM</b>	
<b>TWR</b>	Toronto 118.35 118.7 (See Toronto VTPC)
<b>PRO</b>	Apch/Dep route follows Etobicoke Creek until due W of heli with a final apch path brg 280° fr heli. Ctc Toronto twr for specific instructions prior to tkof & ldg.



## TOTTENHAM / RONAN ON

CTR3

<b>REF</b>	N44 02 32 W79 50 47 2.1NW 10°W UTC-5(4) Elev 823' VTA A5000
<b>OPR</b>	Mike & Cheryl Ronan 905-936-5529 Reg
<b>PF</b>	C-1,2,3,4,5
<b>FLT PLN</b>	NOTAM FILE CYBM
<b>FIC</b>	London 866-WXBRIEF (Toll free within Canada) or 866-541-4104 (Toll free within Canada & USA)
<b>SERVICES</b>	Ltd hrs
<b>S</b>	1,4,5
<b>RWY DATA</b>	Rwy 08(083°)/26(263°) 2033x150 turf
<b>RCR</b>	Opr Ltd win maint
<b>COMM</b>	
<b>ATF</b>	tfc 123.2 5NM 3500 ASL
<b>CAUTION</b>	Extv glider activity. Ditch at west end of rwy 26 btwn thld & road.



# CANADA FLIGHT SUPPLEMENT / GPH 205

Effective 0901Z 20 November 2008 to 0901Z 15 January 2009

AERODROME/FACILITY DIRECTORY B941

## TOTTENHAM / VOLK ON

CPM5

<b>REF</b>	N43 59 37 W79 46 50 2SE 10°W UTC-5(4) Elev 980' VTA A5000 F-21	
<b>OPR</b>	G. Volk 905-936-4572 Reg Ltd hrs	
<b>PF</b>	B-1 C-2,3,4	
<b>FLT PLN</b>	NOTAM FILE CYBM <b>FIC</b> London 866-WXBRIEF (Toll free within Canada) or 866-541-4104 (Toll free within Canada & USA)	
<b>SERVICES</b>	Ltd hrs <b>S</b> 1,4,5	
<b>RWY DATA</b>	Rwy 16/34 2700x100 turf Thld 16 displ 200'. Thld 34 displ 250'. Rwy 09/27 1800x100 turf Thld 09 displ 300'. Thld 27 displ 150'.	
<b>RCR</b>	Opr Ltd win maint. Rwys soft when wet & dur thaw.	
<b>COMM</b>	<b>ATF</b> tfc 123.2 5NM 2500 ASL	
<b>CAUTION</b>	Marked P-lines 50 AGL 750' fr thld 34. Acft not visible fr opposite ends of rwy 16/34. Caution should be maintained dur all apchs & deps due to tall trees (50 AGL) and/or rising terrain in the immediate vic of all rwys. Prkg/bldgs on apch 100' fr rwy 09.	

## TRAIL BC

CAD4

<b>REF</b>	N49 03 20 W117 36 33 6.1SE 18°E UTC-8(7) Elev 1427' A5005 E-15 LO2 CAP RCAP	
<b>OPR</b>	Regional District of Kootenay Boundary 800-355-7352 Cert	
<b>PF</b>	B-1 C-2,3,4,5,6	
<b>FLT PLN</b>	NOTAM FILE CYCG <b>FIC</b> Kamloops 866-WXBRIEF (Toll free within Canada) or 866-541-4101 (Toll free within Canada & USA)	
<b>SERVICES</b>	250-368-9148 or 250-364-2960 or 250-367-7182	
<b>FUEL</b>	100LL	
<b>OIL</b>	All	
<b>RWY DATA</b>	Rwy 16/34 4000x75 asphalt	
<b>RCR</b>	250-368-9148 Mon-Fri 1630-0030Z O/T 250-364-2960 or 250-367-7182	
<b>COMM</b>	<b>MF</b> tfc 123.2 5NM 4400 ASL (CAR 602.98)	
<b>PRO</b>	Altimeter setting avail Ltd hrs 1630-0030Z 250-368-9148	
<b>CAUTION</b>	Narrow valley. Final apch rwy 16 offset 20°- axis 139° mag due terrain. Rgt hand circuits rwy 16 (CAR 602.96). Twr 68 AGL aprx 1200' S of thld 34.	

# CANADA FLIGHT SUPPLEMENT / GPH 205

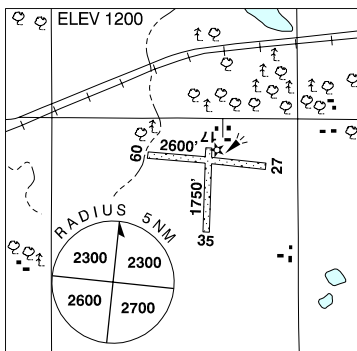
Effective 0901Z 20 November 2008 to 0901Z 15 January 2009

## B942 AERODROME/FACILITY DIRECTORY

### TREHERNE MB

**CKU2**

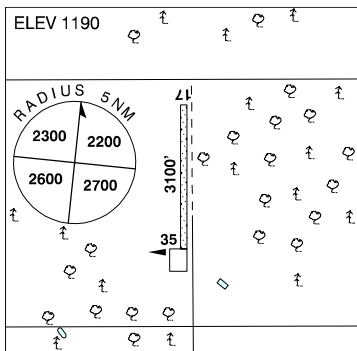
<b>REF</b>	N49 37 52 W98 39 59 2E 6°E UTC-6(5) Elev 1200' A5007 E-16 E-17
<b>OPR</b>	Boyne Valley Aviation 204-723-2175/2643 or 204-526-7309 Reg PPR
<b>PF</b>	B-1 C-2,4,5
<b>FLT PLN</b>	NOTAM FILE CYDN
<b>FIC</b>	Winnipeg 866-WXBRIEF (Toll free within Canada) or 866-541-4103 (Toll free within Canada & USA)
<b>RWY DATA</b>	Rwy 09(096°)/27(276°) 2600x90 turf Rwy 17(174°)/35(354°) 1750x65 turf Rwy 17 slopes up
<b>RCR</b>	Opr No win maint
<b>COMM</b>	
<b>ATF</b>	tfc 123.2 5NM 4200 ASL
<b>CAUTION</b>	Trees adj thld rwy 17. Lgtd tower 1700 ASL (375 AGL) 1.0NM S of A/D.



### TREHERNE (SOUTH NORFOLK AIRPARK) MB

**CTN6**

<b>REF</b>	N49 39 35 W98 39 55 2NE 6°E UTC-6(5) Elev 1190' A5007 E-16 E-17
<b>OPR</b>	RM of South Norfolk 204-723-2044 Fax 204-723-2719 Reg
<b>PF</b>	C-1,2,4,5
<b>FLT PLN</b>	NOTAM FILE CYDN
<b>FIC</b>	Winnipeg 866-WXBRIEF (Toll free within Canada) or 866-541-4103 (Toll free within Canada & USA)
<b>RWY DATA</b>	Rwy 17(174°)/35(354°) 3100x70 treated gravel/turf, centre 40' treated gravel
<b>RCR</b>	Opr No win maint
<b>COMM</b>	
<b>ATF</b>	tfc 123.2 5NM 4200 ASL
<b>CAUTION</b>	Trees approx. 40' high 90' E along north portion of airstrip. Lgtd tower 1700 ASL (375 AGL) 2.7NM S of A/D.



# CANADA FLIGHT SUPPLEMENT / GPH 205

Effective 0901Z 20 November 2008 to 0901Z 15 January 2009

AERODROME/FACILITY DIRECTORY B943

## TRENTON NS

CYTN

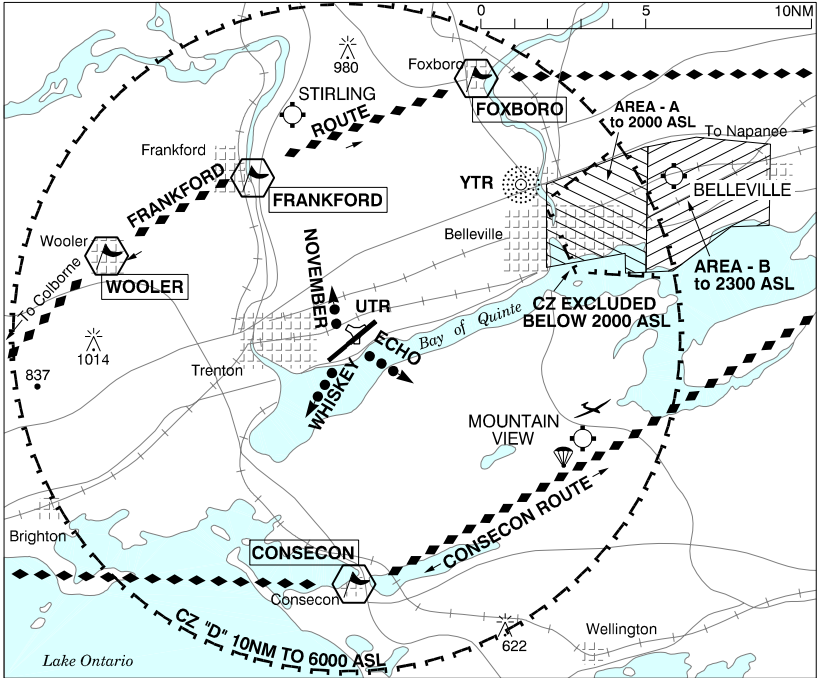
<b>REF</b>	N45 36 43 W62 37 16 Adj E 20°W UTC-4(3) Elev 319' A5003 F-22 LO8 HI6 CAP	
<b>OPR</b>	Trenton Airport Ltd 902-752-9348/ 754-9385 Reg Ldg fees	
<b>PF</b>	B-1 C-2,3,4,5,6	
<b>FLT PLN</b>	NOTAM FILE CYHZ	
<b>FIC</b>	Halifax 866-WXBRIEF or (French) 866-GOMÉTÉO (Toll free within Canada) or 866-541-4106 (Toll free within Canada & USA)	
<b>ACC</b>	Moncton 506-867-7176 or 866-480-8200 Flt Plns by Fax 506-867-7180 & include phone numbers where pilot can be reached prior to dep	
<b>SERVICES</b>	Call out chg may be levied.	
<b>FUEL</b>	100LL, JA-1 12-21Z‡ Mon-Fri O/T ctc opr	
<b>RWY DATA</b>	Rwy 07(066°)/25(246°) 5378 X 145. Rwy 07 up 0.58% first 1400'. Rwy 25 up 1.79% first 3978'	
<b>RCR</b>	Opr Ltd win maint rwy 07/25 PNR	
<b>LIGHTING</b>	07-AS(ME) AP, 25-AS(ME) P1 ARCAL 122.8 type K	
<b>COMM</b>		
<b>ATF</b>	UNICOM (AU) 122.8 12-21Z‡ Mon-Fri O/T tfc 122.8 5NM 3300 ASL	
<b>PAL</b>	Moncton Ctr 135.3 135.65	
<b>NAV</b>		
<b>NDB</b>	5Y 338 (L) N45 36 42 W62 37 31 at A/D Pvt	

# CANADA FLIGHT SUPPLEMENT / GPH 205

Effective 0901Z 20 November 2008 to 0901Z 15 January 2009

B944 AERODROME/FACILITY DIRECTORY

## TRENTON (ON) VFR TERMINAL PROCEDURES CHART



LOCATION	IDENT	LAT/LONG
COLBORNE		N44° 00.50 W77° 53.40
CONSECON		N44° 00.00 W77° 30.00
FOXBORO		N44° 14.80 W77° 26.00
FRANKFORD		N44° 12.00 W77° 36.00
NAPANEE		N44° 14.80 W76° 57.50
WOOLER		N44° 05.40 W77° 42.00

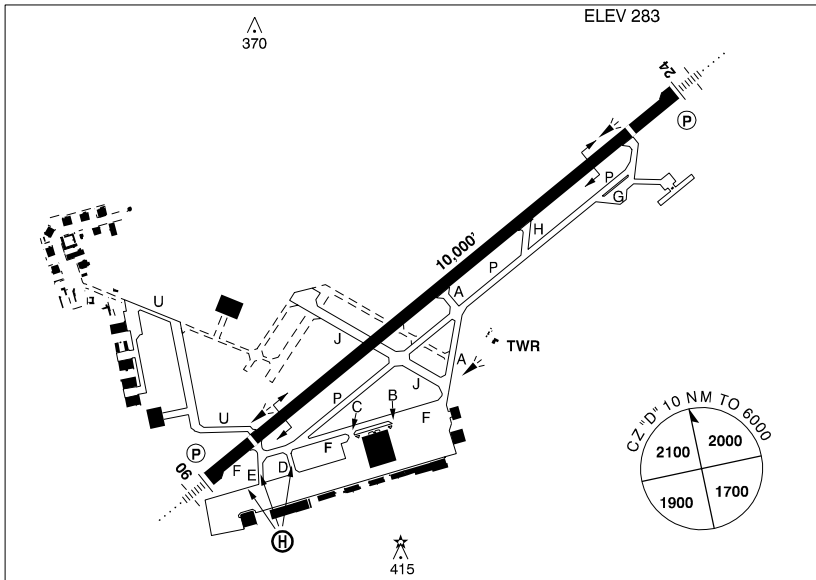
# CANADA FLIGHT SUPPLEMENT / GPH 205

Effective 0901Z 20 November 2008 to 0901Z 15 January 2009

AERODROME/FACILITY DIRECTORY B945

**TRENTON ON**

**CYTR**



<b>REF</b>	N44 07 08 W77 31 41 2.3NE 12°W UTC-5(4) Elev 283' A5000 F-21 LO6 LO7 HI5 CAP
<b>OPR</b>	DND WComd CFB Trenton Attn: W Ops O 613-965-3316 CSN 319-827-3316. Civil acft 48 hrs PPR, Ldg & Hdg fees. Mil PPR
<b>PF</b>	B-1 D-2,3,5
<b>CUST</b>	AOE Mil ft 613-392-5423 or 613-392-2811 Ext 3316, 2 hr PNR. No civ acft exc emerg or MEDEVAC 05-13Z†.
<b>FLT PLN</b>	NOTAM FILE CYTR
<b>FIC</b>	London 866-WXBRIEF (Toll free within Canada) or 866-541-4104 (Toll free within Canada & USA) (Note: Wg Ops/Twr will not accept telephone filing)
<b>WX</b>	WD1 613-392-2811 Ext 2761 09-01Z† O/T AWOS (see COMM) TAF H24 issue times 00, 06, 12, 18Z
<b>SERVICES</b>	No civil svcg. Mil acft: Tran svcg ltd to prkg refuelling & starts. Trans aircrew rqr'd to carry out own DI & supervise svcg, fuelling & pin install. Arr with max PI valid.
<b>FUEL</b>	F-34, SP
<b>OIL</b>	123, 128, 133, 148, 156, SOAP
<b>ARFF</b>	7
<b>SUP FL</b>	D-ice, LHOX, LOX
<b>JASU</b>	CE1, 6, 8, 12, 13, 15, 16, CA1, 3, CEA1
<b>MIL ADV</b>	Wings Ops 122.35 or 268.0 Inbd mil acft advise ramp time & requirements at least 20 min prior to ldg.
<b>RWY DATA</b>	Rwy 06(063°)/24(243°) 10,000x200 asphalt Thlds 06 & 24 displ 1000'. Rwy 06 BLISS 500S (1500) Rwy 24 AAE 44B-3H (1397)
<b>RCR</b>	Opr CRFI S100, T200, ST248, TT400. Rwy 06/24 PCN for 1000' displ thlds 68/R/A/X/U PCN for remainder of rwy 06/24 85/F/C/X/U.
<b>LIGHTING</b>	06-AN (non-std 3000' (1600' SF)) (TE HI) P2 GPI 999' TCH 52', 24-AN (non-std 3000' (1600' SF)) (TE HI) P2 GPI 986' TCH 51'

# CANADA FLIGHT SUPPLEMENT / GPH 205

Effective 0901Z 20 November 2008 to 0901Z 15 January 2009

B946 AERODROME/FACILITY DIRECTORY

## TRENTON ON (Cont'd)

CYTR

<b>COMM</b>	
<b>ATIS</b>	135.45 257.7
<b>CLNC DEL</b>	124.35 286.4 all itinerant IFR dep acft to ctc clnc del prior to engine start if able
<b>GND</b>	121.9 275.8
<b>TWR</b>	128.7 236.6 (E)
<b>TML</b>	128.4 324.3
<b>MIL</b>	Inbd acft call Wg Ops 122.35 or 268.0 20 min out with load & svc data H24. Tiger (SAR) Ops 232.1 opr 13-2130Z†.
<b>PMSV</b>	344.6
<b>NAV</b>	
<b>NDB</b>	YTR 215 (L) N44 11 37 W77 24 12 244° 6.5NM to A/D SEVERN ZZR 317 (L) N44 03 10 W77 37 36 058° 5.2NM to A/D Preventive maint 1st Tues of month 13-17Z†
<b>TACAN</b>	UTR 109.7 Ch 34 N44 07 16 W77 31 44 (285°) at A/D Preventive maint 1st Thu of month 13-17Z†
<b>ILS</b>	ITR 109.7 (Rwy 24/06) RVR Preventive maint first Wed of ev month 13-17Z†
<b>PAR</b>	125.25 127.95 367.8 PAR, PSR & SSR preventive maint each Mon 24-06Z† dur VFR. Mon hol alternate Tue.
<b>PRO</b>	
	Visiting aircrew report to Wg Ops. Pilots must obtain start clnc from Duty Ops and twr/gnd ctrl before commencing engine start. Rgt hand circuits rwy 06 (CAR 602.96). Tfc ptn; convl 1500 ASL. Jet 2000 ASL overhead breaks towards the tower for all rwy, max 300 kt at initial located on the rwy extended centreline at 3-5NM or as directed by ATC. Extensive paradrop and glider activity at Trenton and Mountain View (CPZ3) to 3500 ASL, ocsl to 12,500 ASL. Increased mil tfc within 35NM of CYTR. Pilots are advised to listen to CYTR ATIS prior to contacting CYTR Twr for entry into the CZ. All VFR acft & IFR acft in VMC cond on overshoot, missed approach, or dep shall not exceed 1500 ASL until dep end of rwy.
<b>HELI</b>	VFR, arr/dep req Whiskey, November, or Echo rtes. See VTPC. Whiskey - Remain S of rwy 06/24. Echo - Direct twy J remain S of rwy 06/24. November - Direct ATESS ramp req clnc across active. Dep maintain 500 AGL within 5NM aprt or as cleared by ATC. Arr maintain 500 AGL within 1NM aprt.  De-icing: All aircrew to arrange de-icing through Wg Ops. All de-icing of CF and transient acft to be performed on the E ramp, on spot "DE-ICE 1" located at N44 06.717 W77 31.758 . Acft not able to enter the E ramp due to size will be de-iced on spot "DE-ICE 2" located at N44 06.800 W77 31.795 on "Foxtrot" taxiway. Acft to enter ramp via "Bravo" taxiway for eastbound departures, and via "Alpha" taxiway for westbound departures. Double wide yellow dashed lines lead into DE-ICE 1, which is marked with large RED square. Aircrew are to stop with the nose wheel on the RED spot, shutdown the acft engines, set the Park Break, and contact ICEMAN on freq 130.775. Do not exit acft at de-icing spots. All de-icing will be performed with APU/GTC running. Before contacting ground control to start engines, aircrew shall confirm with ICEMAN that men and equipment are clear of danger area.
<b>CAUTION</b>	Uniform twy, centre 50' usable only, lgts displ 50' either side of usable portion of twy, not suitable for ngt ops.

# CANADA FLIGHT SUPPLEMENT / GPH 205

Effective 0901Z 20 November 2008 to 0901Z 15 January 2009

AERODROME/FACILITY DIRECTORY B947

## TRENTON / MOUNTAIN VIEW ON

CPZ3

<b>REF</b>	N44 04 10 W77 20 17 5.2SE 12°W UTC-5(4) Elev 362' A5000 F-21 LO6 LO7 HI5	
<b>OPR</b>	DND All users 24 hr PPR through Trenton Ops 613-965-3316, CSN 319-827-3316 Fax 613-965-7093. Regardless of PPR all users check in with Wg Ops via phone or radio 122.35, 268.0 prior to using Mountain View aprt.	
<b>PF</b>	B-1 D-2,3,5	
<b>FLT PLN</b> <b>FIC</b>	NOTAM FILE CYTR London 866-WXBRIEF (Toll free within Canada) or 866-541-4104 (Toll free within Canada & USA) (Note: Wg Ops/twr will not accept telephone filing).	
<b>SERVICES</b> <b>MIL ADV</b>	Trenton 268.0 20 min prior to ldg	
<b>RWY DATA</b> <b>RCR</b>	Rwy 06/24 5007x150 asphalt A-Cable; Rwy 24 MA-1A (1500') PNR Opr Rwy 06/24 (01 Mar-30 Apr) ST120, PCN 23/F/C/X/T; (01 May-28 Feb) ST126, PCN 25/F/C/X/T. No win maint unless requested with 72 hrs PNR through Trenton Ops.	
<b>COMM</b> <b>ATF</b>	tfc 123.3 4NM 2500 ASL. Area underlies the SE quadrant of the CYTR Mil CZ. Acft to contact Trenton Twr on 128.7 prior to entering the Mountain View ATF area.	
<b>PRO</b>	Increased mil tfc within 35NM of CYTR. Pilots are advised to listen to CYTR ATIS (135.45) prior to contacting CYTR Twr for entry into ATF area. Extensive paradrop & glider activity at Trenton (CYTR) & Mountain View to 3500 ASL, ocsl to 12,500 ASL. Timing and alt will be bcst on ATIS. Non-std circuit pro for mil acft.	

## TROIS-RIVIÈRES QC

CYRQ

<b>REF</b>	N46 21 10 W72 40 46 16°W UTC-5(4) Elev 199' A5002 F-21 LO6 LO7 LO8 HI5 CAP	
<b>OPR</b>	Town 819-377-4382 or 819-695-0502 Cert Ldg fees	
<b>PF</b>	A-1,2 D-3,4,5,6	
<b>CUST</b>	AOE/15 888-226-7277 13-2130Z† Mon-Fri exc hols	
<b>FLT PLN</b> <b>FIC</b>	(bil) NOTAM FILE CYQB Québec 866-GOMÉTÉO or 866-WXBRIEF (Toll free within Canada) or 866-541-4105 (Toll free within Canada & USA)	
<b>ACC</b>	Montréal 800-633-1353	
<b>SERVICES</b> <b>FUEL</b>	100LL, JA-1 (FSII) (SP) (HPR) 13-01Z† 819-377-4382 O/T call out chg 1 hr PNR 819-695-0502	
<b>OIL</b>	All	
<b>S</b>	1,2,3,4,5,6	
<b>SUP FL</b>	D-ice	



# CANADA FLIGHT SUPPLEMENT / GPH 205

Effective 0901Z 20 November 2008 to 0901Z 15 January 2009

B948 AERODROME/FACILITY DIRECTORY

## TROIS-RIVIÈRES QC (Cont'd)

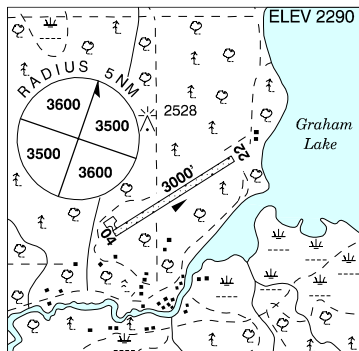
CYRQ

<b>RWY DATA</b>	Rwy 05(047°)/23(227°) 6000x150 asphalt
<b>TWY</b>	Twy A width 75'. Twy B width 33', rstd to acft with wheel track of 23' or less.
<b>RCR</b>	Opr Snow removal 13-01Z± O/T 3 hrs PNR. PLR/PCN.
<b>LIGHTING</b>	05-(T ME), 23-AS(T ME) P1 ARCAL-123.0 type K. Twy B unlgtd.
<b>COMM</b>	(bil) UNICOM (AU) 13-01Z± O/T tfc 123.0 5NM 3200 ASL (CAR 602.98)
<b>MF</b>	(bil) Montréal Ctr 128.225 229.2
<b>ARR</b>	(bil) Montréal Ctr 128.225 229.2
<b>DEP</b>	(bil) Montréal Ctr 128.225 229.2
<b>PAL</b>	(bil) Montréal Ctr 128.225
<b>NAV</b>	
<b>NDB</b>	YRQ 205 (L) N46 22 09 W72 39 54 227° 0.6NM to thid rwy 23
<b>PRO</b>	Rwy 05 rgt hand circuits (CAR 602.96).
<b>CAUTION</b>	Parachute jumps to 16,000 ASL, May 1-Oct 31. Ocsl blasting ops, 1NM radius from N46 34 28 W72 43 42 (13.5NM NNW of A/D), max alt 3700 ASL.

## TROUT LAKE AB

CFB4

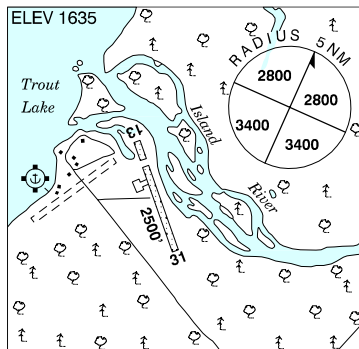
<b>REF</b>	N56 30 W114 33 19°E UTC-7(6) Elev 2290' A5023 D-13 E-15 E-16
<b>OPR</b>	Muni District #17 780-891-3778 780-649-3815 Reg
<b>FLT PLN</b>	NOTAM FILE CYPE
<b>FIC</b>	Edmonton 866-WXBRIEF (Toll free within Canada) or 866-541-4102 (Toll free within Canada & USA)
<b>RWY DATA</b>	Rwy 04(039°)/22(219°) 3000x75 turf
<b>RCR</b>	Opr Ltd win maint
<b>COMM</b>	
<b>ATF</b>	tfc 123.2 5NM 5300 ASL



## TROUT LAKE NT

CEU9

<b>REF</b>	N60 26 22 W121 14 12 Adj 24°E UTC-7(6) Elev 1635' A5029 D-12 D-13
<b>OPR</b>	Govt of Northwest Territories (Fort Simpson) 867-695-2471 Settlement 867-206-2800 Emerg/Incident rpt ctc Govt of Northwest Territories 877-989-1400 Reg
<b>PF</b>	C-1,5
<b>FLT PLN</b>	NOTAM FILE CYFS
<b>FIC</b>	North Bay 866-WXBRIEF (Toll free within Canada) or 866-541-4109 (Toll free within Canada & USA)
<b>ACC</b>	Edmonton IFR 888-358-7526 or 780-890-8304/8305



# CANADA FLIGHT SUPPLEMENT / GPH 205

Effective 0901Z 20 November 2008 to 0901Z 15 January 2009

AERODROME/FACILITY DIRECTORY B949

## TROUT LAKE NT (Cont'd)

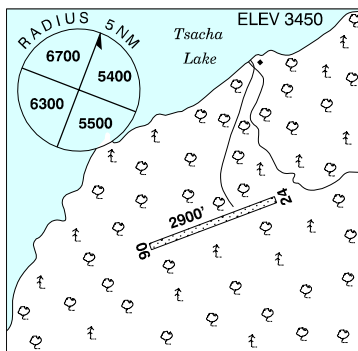
CEU9

<b>SERVICES</b>	
<b>S</b>	4,6
<b>RWY DATA</b>	Rwy 13(138°)/31(318°) 2500x60 gravel Thld 13 displ 400'.
<b>RCR</b>	Settlement win maint 17-21Z Mon-Fri exc hols, O/T 2 hrs PNR, ctc Regional APM 867-695-2491. Call out chg may be levied.
<b>LIGHTING</b>	13-(TE LO), 31-(TE LO) ARCAL-122.1 type J
<b>COMM</b>	
<b>ATF</b>	tfc 123.2 5NM 4700 ASL
<b>CAUTION</b>	P-lines across N end of abandoned rwy 02/20.

## TSACHA LAKE BC

CAE4

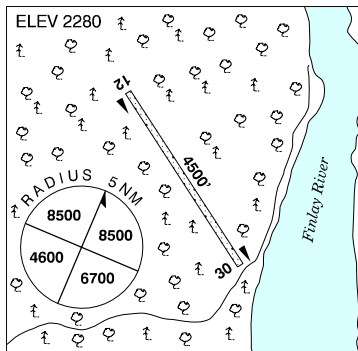
<b>REF</b>	N53 01 W124 50 21°E UTC-8(7) Elev 3450' A5014 E-15
<b>OPR</b>	MacKenzie Trail Lodge, Prince George 415-435-1395 Reg
<b>FLT PLN</b>	NOTAM FILE CYWL
<b>FIC</b>	Kamloops 866-WXBRIEF (Toll free within Canada) or 866-541-4101 (Toll free within Canada & USA)
<b>RWY DATA</b>	Rwy 06/24 2900x50 turf/gravel
<b>RCR</b>	Opr No win maint. E end rwy ruf. Width of cleared area 100'. Rwy soft in spring & after heavy rain.
<b>COMM</b>	
<b>ATF</b>	tfc 123.2 2NM 5000 ASL
<b>CAUTION</b>	Low brush adj rwy. Sfc unprepared outside rwy edge.



## TSAY KEH BC

CBN9

<b>REF</b>	N56 54 22 W124 57 54 Adj 23°E UTC-8(7) Elev 2280' A5022 D-12 E-15 LO1
<b>OPR</b>	Tsay Keh Dene Band Reg For lcl cond ctc Northern Thunderbird Air 250-963-9611
<b>PF</b>	C-1,4
<b>FLT PLN</b>	NOTAM FILE CYXS
<b>FIC</b>	Kamloops 866-WXBRIEF (Toll free within Canada) or 866-541-4101 (Toll free within Canada & USA)
<b>RWY DATA</b>	Rwy 12/30 4500x50 packed gravel/sand
<b>RCR</b>	250-993-2100 Band office Ltd win maint
<b>COMM</b>	
<b>ATF</b>	tfc 123.2 2NM 3800 ASL
<b>CAUTION</b>	Aprx 30' sharp drop off SE end of rwy.



# CANADA FLIGHT SUPPLEMENT / GPH 205

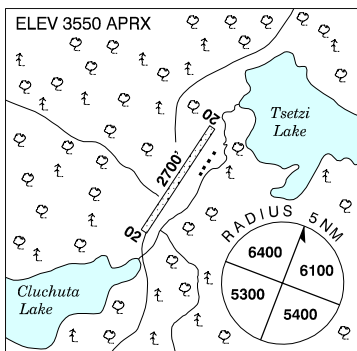
Effective 0901Z 20 November 2008 to 0901Z 15 January 2009

B950 AERODROME/FACILITY DIRECTORY

## TSETZI LAKE (PAN PHILLIPS) BC

CBT3

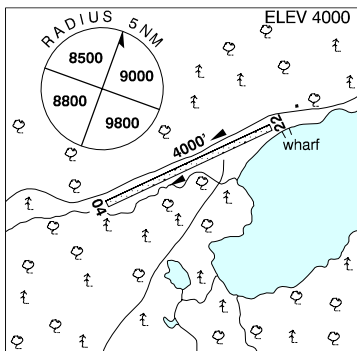
<b>REF</b>	N52 58 19 W125 01 36 21°E UTC-8(7) Elev 3550' aprx A5013 A5014 E-15
<b>OPR</b>	Pan Phillips Fishing Resort 604-484-2976 Reg
<b>PF</b>	B-2,5
<b>FLT PLN</b>	NOTAM FILE CYWL
<b>FIC</b>	Kamloops 866-WXBRIEF (Toll free within Canada) or 866-541-4101 (Toll free within Canada & USA)
<b>SERVICES</b>	
<b>S</b>	5
<b>RWY DATA</b>	Rwy 02/20 2700x90 turf Rwy 20 aprx up 2%
<b>RCR</b>	Opr No win maint
<b>COMM</b>	
<b>ATF</b>	tfc 123.2 2NM 5100 ASL



## TSUNIAH LAKE LODGE BC

CAF4

<b>REF</b>	N51 32 W124 10 20°E UTC-8(7) Elev 4000' A5004 E-15
<b>OPR</b>	Tsuniah Lake Lodge 250-392-5612/394-4122 Reg PPR
<b>PF</b>	B-1,2,3,5
<b>FLT PLN</b>	NOTAM FILE CYWL
<b>FIC</b>	Kamloops 866-WXBRIEF (Toll free within Canada) or 866-541-4101 (Toll free within Canada & USA)
<b>SERVICES</b>	
<b>S</b>	5
<b>RWY DATA</b>	Rwy 04/22 4000x100 turf/gravel Rwy 04 slope up
<b>RCR</b>	Opr No win maint
<b>COMM</b>	
<b>ATF</b>	tfc 123.2 2NM 5500 ASL
<b>PRO</b>	Rgt hand circuits rwy 04 (CAR 602.96).



# CANADA FLIGHT SUPPLEMENT / GPH 205

Effective 0901Z 20 November 2008 to 0901Z 15 January 2009

AERODROME/FACILITY DIRECTORY B951

## TUKTOYAKTUK / JAMES GRUBEN NT

CYUB

<b>REF</b>	N69 26 00 W133 01 35 32°E UTC-7(6) Elev 15' A5040 C-9 LO5 HI2 CAP	
<b>OPR</b>	Govt of Northwest Territories 867-977-2658 Emerg/Incident rpt ctc Govt of Northwest Territories 877-989-1400 Cert	
<b>PF</b>	A-1 avbl 14-06Z± dly D-1,2,4,5,6	
<b>CUST</b>	AOE/15 888-226-7277 16-24Z± Mon-Fri exc hols	
<b>FLT PLN</b>	NOTAM FILE CYUB	
<b>FIC</b>	North Bay 866-WXBRIEF (Toll free within Canada) or 866-541-4109 (Toll free within Canada & USA)	
<b>ACC</b>	Edmonton IFR 888-358-7526 or 780-890-8304/8305	
<b>CARS</b>	867-977-2469 Ltd hrs (see COMM)	
<b>WX</b>	METAR dur CARS hrs ops. TAF 16-06Z±, issue times: 16, 19, 01Z (DT 15, 19, 01Z).	
<b>SERVICES</b>	<b>S</b> 4	
<b>RWY DATA</b>	Rwy 09(094°)/27(274°) 5000x150 gravel Thld 09 & 27 displ 200'. <b>RCR</b> Opr No rwy graded areas provided, 4-6' drop offs outside rwy edges. Win maint avbl 16-24Z± Mon-Fri O/T 1 hr PNR 867-977-7004/7017/2580/2489 867-678-0044/0045 403-462-1526. Call out chg may be levied. PLR/PCN	
<b>LIGHTING</b>	09-AS(TE ME) V2, 27-AS(TE ME) V2 ARCAL-122.1 type K	
<b>COMM</b>	<b>MF</b> aprt rdo ltd hrs O/T ftc 122.1 5NM 3100 ASL (CAR 602.98) <b>APRT RDO</b> TUK aprt rdo 122.1 (V) 14-06Z±	
<b>NAV</b>	<b>NDB</b> YUB 380 (M) N69 26 04 W133 01 02 at A/D	
<b>PRO</b>	Rgt hand circuits rwy 09 (CAR 602.96).	

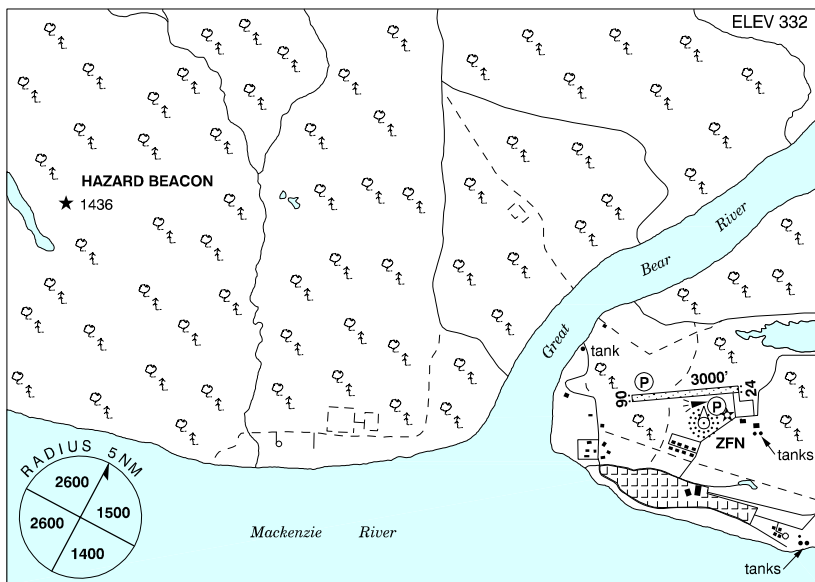
# CANADA FLIGHT SUPPLEMENT / GPH 205

Effective 0901Z 20 November 2008 to 0901Z 15 January 2009

B952 AERODROME/FACILITY DIRECTORY

## TULITA NT

CZFN



<b>REF</b>	N64 54 35 W125 34 21 28°E UTC-7(6) Elev 332' A5035 C-10 LO5
<b>OPR</b>	Govt of Northwest Territories (Norman Wells) 867-587-2451 Emerg/Incident rpt ctc Govt of Northwest Territories 877-989-1400 Cert
<b>PF</b>	A-1 C-2,4,5
<b>FLT PLN</b>	NOTAM FILE CZFN
<b>FIG</b>	North Bay 866-WXBRIEF (Toll free within Canada) or 866-541-4109 (Toll free within Canada & USA)
<b>ACC</b>	Edmonton IFR 888-358-7526 or 780-890-8304/8305
<b>CARS</b>	867-588-3191 Ltd hrs (see COMM)
<b>WX</b>	METAR dur CARS hrs of ops (see COMM)
<b>RWY DATA</b>	Rwy 06(057°)/24(237°) 3000x100 gravel Rwy 06 up 0.32%
<b>RCR</b>	CARS Win maint 16-24Z‡ Mon-Fri exc hols, O/T 2 hrs PNR 867-587-2555. Call out chg may be levied. PLR/PCN
<b>LIGHTING</b>	06-AS(TE ME) AP, 24-AS(TE ME) AP ARCAL-122.1 type K; APAPI avbl only dur CARS hrs ops. Ngt ops not recommended unless hazard bcn oprg.
<b>COMM</b>	
<b>MF</b>	aprt rdo ltd hrs O/T tfc 122.1 5NM 3400 ASL (CAR 602.98)
<b>APRT RDO</b>	122.1 (V) 16-24Z‡ Mon-Fri
<b>NAV</b>	
<b>NDB</b>	ZFN 392 (L) N64 54 24 W125 33 54 at A/D

# CANADA FLIGHT SUPPLEMENT / GPH 205

Effective 0901Z 20 November 2008 to 0901Z 15 January 2009

AERODROME/FACILITY DIRECTORY B953

## TUMBLER RIDGE BC

CBX7

<b>REF</b>	N55 01 30 W120 56 05 6S 21°E UTC-7 Elev 3075' A5014 E-15 LO1 RCAP	
<b>OPR</b>	District of Tumbler Ridge 250-242-3578 Reg	
<b>PF</b>	A-1 D-2,3,4,5	
<b>FLT PLN</b>	NOTAM FILE CYXJ	
<b>FIC</b>	Edmonton 866-WXBRIEF (Toll free within Canada) or 866-541-4102 (Toll free within Canada & USA)	
<b>ACC</b>	Edmonton IFR 888-358-7526 or 780-890-8304/8305	
<b>SERVICES</b>		
<b>FUEL</b>	JA, JB 877-242-4211 or 250-242-4542	
<b>S</b>	5,6	
<b>RWY DATA</b>	Rwy 01/19 4000x100 asphalt	
<b>RCR</b>	Opr Ltd win maint	
<b>LIGHTING</b>	01-(TE ME) AP, 19-(TE ME) AP ARCAL-123.2 type K	
<b>COMM</b>		
<b>ATF</b>	tfc 123.2 5NM 6000 ASL	
<b>NAV</b>		
<b>NDB</b>	N9 346 (M) N55 01 34 W120 56 10 at A/D Pvt Unmonitored	
<b>PRO</b>	Aircrew must ctc Edmonton ACC via tel to submit an arr rpt and rcv IFR clnc.	
<b>CAUTION</b>	Deep ditches parallel both sides of the rwy. Moderate to severe turbulence & wind shear may be encountered on apch. Wildlife in the vic.	

## TUNDRA MINE / SALAMITA MINE NT

CTM7

<b>REF</b>	N64 04 22 W111 09 48 21°E UTC-7(6) Elev 1382' A5036 C-10	
<b>OPR</b>	Ron Breadmore 780-628-3886 Reg PPR 24hr ntc rqrd	
<b>FLT PLN</b>	NOTAM FILE CYZF	
<b>FIC</b>	North Bay 866-WXBRIEF (Toll free within Canada) or 866-541-4109 (Toll free within Canada & USA)	
<b>ACC</b>	Edmonton IFR 888-358-7526 or 780-890-8304/8305	
<b>RWY DATA</b>	Rwy 12T(120°T)/30T(300°T) 3244x200 gravel	
<b>COMM</b>		
<b>ATF</b>	tfc 123.2 5NM 4400 ASL	

# CANADA FLIGHT SUPPLEMENT / GPH 205

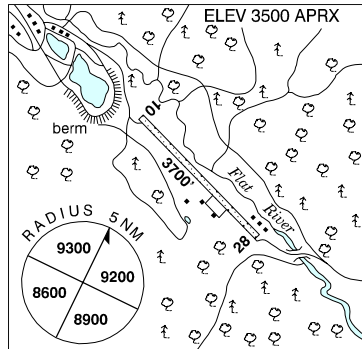
Effective 0901Z 20 November 2008 to 0901Z 15 January 2009

B954 AERODROME/FACILITY DIRECTORY

## TUNGSTEN (CANTUNG) NT

CBX5

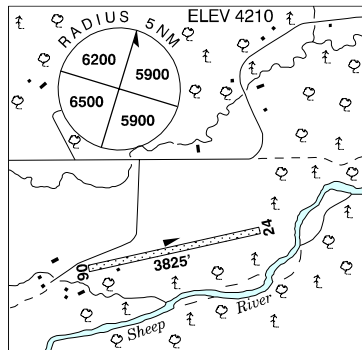
<b>REF</b>	N61 57 25 W128 12 10 26°E UTC-8 Elev 3500' aprx A5029 D-12
<b>OPR</b>	North American Tungsten Corp 604-684-5300 or 604-759-0913 Reg
<b>FLT PLN</b>	NOTAM FILE CYFS
<b>FIC</b>	North Bay 866-WXBRIEF (Toll free within Canada) or 866-541-4109 (Toll free within Canada & USA)
<b>ACC</b>	Edmonton IFR 888-358-7526 or 780-890-8304/8305
<b>RWY DATA</b>	Rwy 10/28 3700x100 gravel
<b>RCR</b>	Opr/Maintenance Ltd maint
<b>COMM</b>	
<b>ATF</b>	tfc 123.2 5NM 6500 ASL



## TURNER VALLEY BAR N RANCH AB

CFY6

<b>REF</b>	N50 39 16 W114 20 39 2SW 17°E UTC-7(6) Elev 4210' VTA A5005 E-15 E-16 LO2
<b>OPR</b>	Bar N Ranch 403-933-7202 Reg PPR
<b>PF</b>	B-1 D-2,3,5
<b>FLT PLN</b>	NOTAM FILE CYBW
<b>FIC</b>	Edmonton 866-WXBRIEF (Toll free within Canada) or 866-541-4102 (Toll free within Canada & USA)
<b>ACC</b>	Edmonton IFR 888-358-7526 or 780-890-8304/8305
<b>RWY DATA</b>	Rwy 06(061°)/24(241°) 3825x75 packed oiled gravel
<b>RCR</b>	Opr Ltd maint.
<b>COMM</b>	
<b>ATF</b>	UNICOM ltd hrs O/T tfc 122.8 5NM 7300 ASL



# CANADA FLIGHT SUPPLEMENT / GPH 205

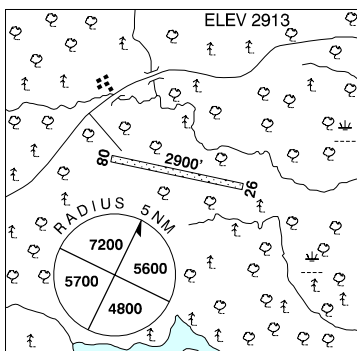
Effective 0901Z 20 November 2008 to 0901Z 15 January 2009

AERODROME/FACILITY DIRECTORY B955

## TWIN CREEKS YT

CFS7

<b>REF</b>	N62 37 10 W131 16 13 26°E UTC-8(7) Elev 2913' A5028 D-12
<b>OPR</b>	Govt of Yukon 867-634-2450 or 867-969-2246 Reg
<b>FLT PLN</b>	NOTAM FILE CYXY
<b>FIC</b>	Whitehorse 866-WXBRIEF (Toll free within Canada) or 866-541-4107 (Toll free within Canada & USA)
<b>ACC</b>	Edmonton IFR 888-358-7526 or 780-890-8304/8305
<b>RWY DATA</b>	Rwy 08(076°)/26(256°) 2900x75 gravel
<b>RCR</b>	Opr No maint
<b>COMM</b>	
<b>ATF</b>	tfc 123.2 5NM 6000 ASL

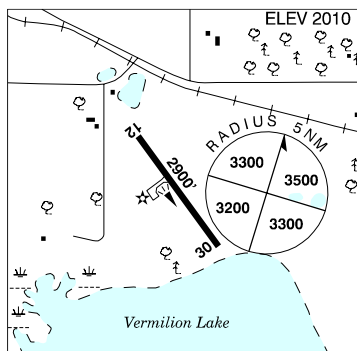


## TWIN ISLAND AIRPARK AB — See EDMONTON / TWIN ISLAND AIRPARK

## TWO HILLS AB

CEL6

<b>REF</b>	N53 42 W111 47 2.5W 17°E UTC-7(6) Elev 2010' A5015 E-15 E-16
<b>OPR</b>	County of Two Hills 780-657-2224 Reg
<b>PF</b>	A-1 C-2,4,5
<b>FLT PLN</b>	NOTAM FILE CYLL
<b>FIC</b>	Edmonton 866-WXBRIEF (Toll free within Canada) or 866-541-4102 (Toll free within Canada & USA)
<b>ACC</b>	Edmonton IFR 888-358-7526 or 780-890-8304/8305
<b>RWY DATA</b>	Rwy 12/30 2900x75 asphalt
<b>RCR</b>	Opr Ltd maint
<b>LIGHTING</b>	12-(TE ME), 30-(TE ME) ARCAL-123.2 type K
<b>COMM</b>	
<b>ATF</b>	tfc 123.2 5NM 5100 ASL
<b>PRO</b>	Rgt hand circuits rwy 30 (CAR 602.96).





# CANADA FLIGHT SUPPLEMENT / GPH 205

Effective 0901Z 20 November 2008 to 0901Z 15 January 2009

B956 AERODROME/FACILITY DIRECTORY

## TYENDINAGA (MOHAWK) ON

**CPU6**

<b>REF</b>	N44 11 05 W77 06 28 3SW 13°W UTC-5(4) Elev 260' A5000 F-21	
<b>OPR</b>	First Nations Technical Institute 613-396-3100/2122 Reg	
<b>PF</b>	B-1 C-2,5 D-3,4,6	
<b>FLT PLN</b>	NOTAM FILE CYGK <b>FIC</b> London 866-WXBRIEF (Toll free within Canada) or 866-541-4104 (Toll free within Canada & USA)	
<b>SERVICES</b>	<b>FUEL</b> 100LL <b>OIL</b> 15W50 <b>S</b> 1,2,3,4,5,6	
<b>RWY DATA</b>	Rwy 09/27 4270x150 asphalt Thld 09 displ 390' Rwy 15/33 2575x150 asphalt Thld 15 displ 150' <b>RCR</b> Opr Ltd win maint rwy 09/27, no win maint rwy 15/33.	
<b>LIGHTING</b>	09-(TE LO), 27-(TE LO) Ngt thld 390' fr end of rwy 09, only 3880' lgtd. ARCAL-123.4 type J	
<b>COMM</b>	<b>ATF</b> Mohawk UNICOM ltd hrs O/T tfc 123.5 5NM 3300 ASL	
<b>PRO</b>	All mil aircrew are rstd fr conducting tng flt at CPU6 unless prior perms has been obtained fr the APM.	
<b>CAUTION</b>	Extv bird activity Apr-Oct. Possibility of NORDO maint equip on rwys.	