

CANADA FLIGHT SUPPLEMENT / GPH 205

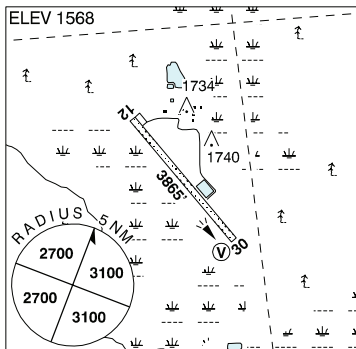
Effective 0901Z 20 November 2008 to 0901Z 15 January 2009

AERODROME/FACILITY DIRECTORY B429

KAHNTAH BC

CKN3

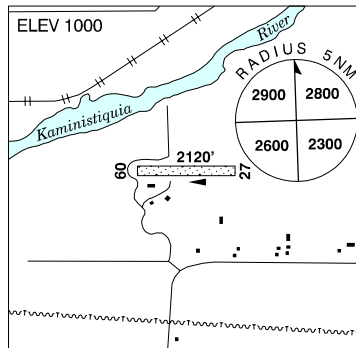
REF	N58 02 30 W120 54 34 19S 23°E UTC-8(7) Elev 1568' A5022 D-13 LO1 RCAP
OPR	Devon Resources 250-772-5411 Reg PPR
FLT PLN FIC	NOTAM FILE CYYE Edmonton 866-WXBRIEF (Toll free within Canada) or 866-541-4102 (Toll free within Canada & USA)
RWY DATA	Rwy 12(117°)/30(297°) 3865x75 gravel
LIGHTING	12-(TE LO), 30-(TE LO) V1 ARCAL 122.95 (5 clicks for rwy lights, 7 for RIL and 9 for VASIS)
COMM ATF	tfc 122.8 5NM 4600 ASL



KAKABEKA FALLS ON

CKG8

REF	N48 25 06 W89 36 07 1NE 2°W UTC-5(4) Elev 1000' A5001 A5008 E-17 F-21
OPR	Kakabeka Falls Flying Club Inc 807-474-0970/473-4515 Reg
PF	B-1 C-2,3,5
FLT PLN FIC	NOTAM FILE CYQT Winnipeg 866-WXBRIEF (Toll free within Canada) or 866-541-4103 (Toll free within Canada & USA)
SERVICES S	2,3,4,5,6
RWY DATA RCR	Rwy 09(088°)/27(268°) 2120x130 turf/snow 807-473-9001 Rwy soft when wet.
COMM ATF	tfc 123.0 3NM 3000 ASL
PRO	Normal circuit N of rwy at 2000 ASL. Glider & ultra-light circuits S of rwy at 1700 ASL.
CAUTION	Extv flt tng within 35NM W & N of CYQT CZ to 6000 ASL.

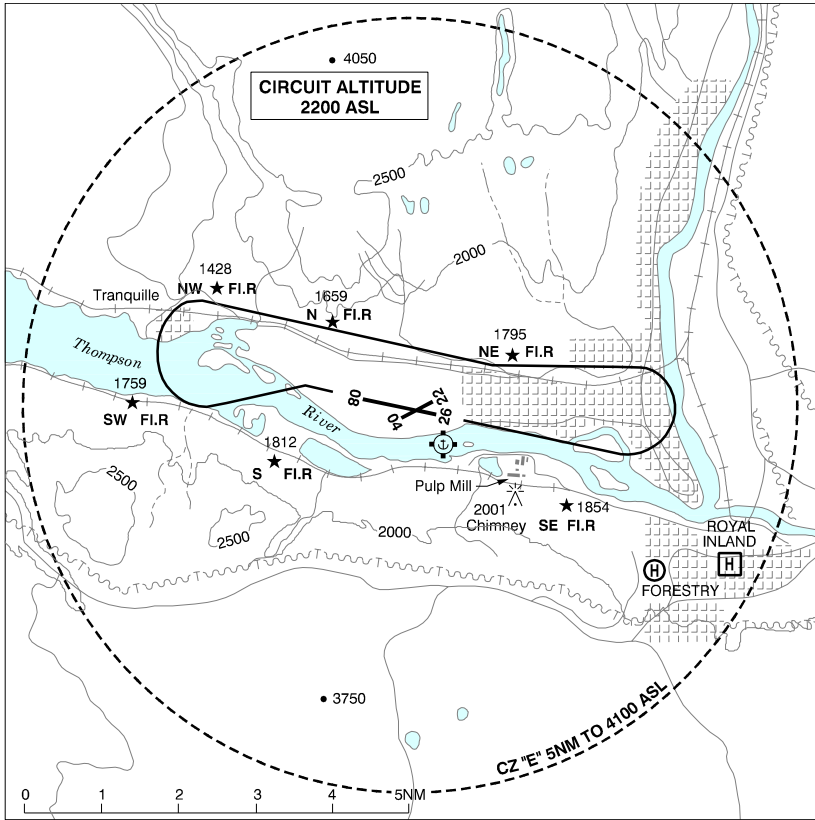


CANADA FLIGHT SUPPLEMENT / GPH 205

Effective 0901Z 20 November 2008 to 0901Z 15 January 2009

B430 AERODROME/FACILITY DIRECTORY

KAMLOOPS VFR TERMINAL PROCEDURES CHART - NIGHT CIRCUIT PROCEDURE



CANADA FLIGHT SUPPLEMENT / GPH 205

Effective 0901Z 20 November 2008 to 0901Z 15 January 2009

AERODROME/FACILITY DIRECTORY B431

KAMLOOPS BC

CYKA

REF	N50 42 05 W120 26 40 5WNW 19°E UTC-8(7) Elev 1133' A5004 E-15 LO2 HI3 CAP RCAP	
OPR	Kamloops Aprt Ltd 250-376-3613 Cert	
PF	A-1,2,3,6 C-4,5	
CUST	AOE/15 888-226-7277 16-08Z± 7 days a wk. Cost recovery Mon-Fri exc hols 16-1630Z±, 0030-08Z± Cost recovery Sat-Sun & hols 16-08Z±. Contact airport for details AOE/30 1630-0030Z± Mon-Fri exc hols	
FLT PLN	NOTAM FILE CYKA	
FIC	Kamloops 866-WXBRIEF (Toll free within Canada) or 866-541-4101 (Toll free within Canada & USA) or 250-376-8392	
WX	METAR H24.	
PIK	TAF H24, issue times: 01, 07, 13, 19Z. Customs bldg, Main Floor, airside access. Follow sign, use MF, then * for door access.	
SERVICES	Call out chg may be levied for one or more svcs, Shell 250-376-7633, 250-314-8201	
FUEL	JA, 100LL (CON S IP JA-1, FSII)	
OIL	80, 100, 120	
S	1(ltd), 2,3,4,5	
PVT ADV	Shell Aerocentre 123.0	
MIL CON	Kamloops Aviation Fuels (Shell) 250-376-7633, 250-314-8201	
RWY DATA	Rwy 08(084°)/26(264°) 6000x148 asphalt Rwy 04(042°)/22(222°) 2092x50 asphalt Twy A, no vehicle ctl from apron to 300' W on Twy A	
TWY	FSS Win maint 14-03Z± Mon-Fri; O/T 2 hrs PNR cost recovery, 14-16Z± Sat-Sun;	
RCR	O/T 2 hrs PNR cost recovery. No win maint rwy 04/22. CRF1, PLR/PCN.	
LIGHTING	08-AO(TE ME) P2, 26-AO(TE ME) P2 PAPI rwy 26 OCL to 4NM; PAPI rwy 08 OCL to 4NM. Twy E unlgtd rstd day time use only.	
COMM	RADIO 125.7 297.0 (E) (emerg only 250-376-7941) RCO Pacific rdo 123.375 (FISE) 126.7 (bcst) CLNC DEL 121.9 ltd hrs MF rdo 125.7 5NM 4100 ASL (CAR 602.98) PAL Vancouver Ctr 132.35 133.5 134.4 236.0 294.0 VDF 125.7	
NAV	VOT 114.8 NDB YKA 223 (M) N50 41 01 W120 20 07 267° 3.8NM to A/D DME XPP 109.9 Ch 36 N50 42 22 W120 27 37 (1129') at A/D LOC XPP 109.9 (Rwy 26) reliable only within 20° of centreline.	
PRO	Day: rgt hand circuits rwys 04, 22 & 26 (CAR 602.96). Night: follow VTTC night circuit pro.	
CAUTION	Only pilots familiar with lcl terrain should use this aprt dur hrs of darkness. Ngt ops not recommended unless all 6 hazard beacons are oprg.	

KAMLOOPS FIC – RCO

Cross reference to PACIFIC RADIO – RCO

CANADA FLIGHT SUPPLEMENT / GPH 205

Effective 0901Z 20 November 2008 to 0901Z 15 January 2009

B432 AERODROME/FACILITY DIRECTORY

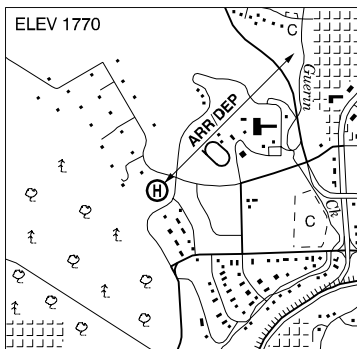
KAMLOOPS FSS – RCO

Victoria Intl 119.7 (RAAS) 08-14Z± (N48 38 W123 25)

KAMLOOPS (BC HYDRO) BC (Heli)

CAM7

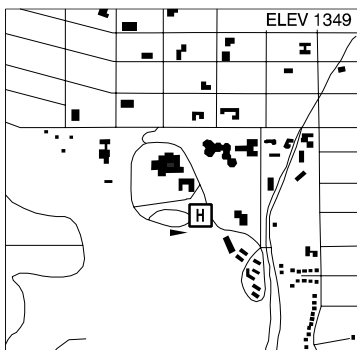
REF	N50 40 01 W120 22 17 19°E UTC-8(7) Elev 1770' A5004
OPR	BC Hydro 250-371-6905 Reg
PF	C-1,2,3,5 D-4,6
FLT PLN	NOTAM FILE CYKA
FIC	Kamloops 866-WXBRIEF (Toll free within Canada) or 866-541-4101 (Toll free within Canada & USA)
PAD DATA	64' x 64' asphalt
RCR	75' x 75' max length 45' Opr
COMM	MF Kamloops rdo 125.7 5NM 4100 ASL centered on Kamloops apt (CAR 602.98)
PRO	Arr/dep fr NE.



KAMLOOPS (ROYAL INLAND HOSP) BC (Heli)

CBC4

REF	N50 40 08 W120 19 56 Adj 19°E UTC-8(7) Elev 1349' A5004
OPR	Royal Inland Hosp 250-374-5111 Cert PPR
PF	B-1,2,4 C-3,5,6
FLT PLN	NOTAM FILE CYKA
FIC	Kamloops 866-WXBRIEF (Toll free within Canada) or 866-541-4101 (Toll free within Canada & USA)
PAD DATA	70' x 85' asphalt/concrete
RCR	140' x 170' turf max acft length 43' Opr
COMM	MF Kamloops rdo 125.7 5NM 4100 ASL centered on Kamloops apt (CAR 602.98)
PRO	Arr/dep path rstd to NE quad.



CANADA FLIGHT SUPPLEMENT / GPH 205

Effective 0901Z 20 November 2008 to 0901Z 15 January 2009

AERODROME/FACILITY DIRECTORY B433

KAMSACK SK

CJN2

REF	N51 33 35 W101 52 44 Adj E 9°E UTC-6 Elev 1510' A5006 E-16	
OPR	Town 306-542-2155 Fax 306-542-2975 R. Paluck 306-542-8220/2731/2643 Reg	
PF	C-1,2,4,5,6	
FLT PLN	NOTAM FILE CYQV FIC Edmonton 866-WXBRIEF (Toll free within Canada) or 866-541-4102 (Toll free within Canada & USA)	
SERVICES FUEL S	For svcg ctc opr or 306-542-2643/3200 100LL 4,5,6	
RWY DATA RCR	Rwy 16(166°)/34(346°) 2500x75 asphalt Opr Ltd win maint	
LIGHTING	16-(TE LO), 34-(TE LO) ARCAL-123.2 type J	
COMM		
ATF	tfc 123.2 5NM 4600 ASL	
PRO	Rgt hand circuits rwy 34 (CAR 602.96).	

KANANASKIS VILLAGE HELISTOP AB (Heli)

CFE7

REF	N50 55 22 W115 08 37 Adj N 17°E UTC-7(6) Elev 5027' A5005	
OPR	Alberta Community Development 403-678-5508 Reg	
PF	B-1 C-1,2,3,5	
FLT PLN	FIC Edmonton 866-WXBRIEF (Toll free within Canada) or 866-541-4102 (Toll free within Canada & USA) ACC Edmonton IFR 888-358-7526 or 780-890-8304/8305	
PAD DATA	70' x 150' PPR for acft over 8400 lbs	
COMM		
ATF	tfc 123.3 5NM 8100 ASL	
PRO	15 min loading/unloading only. Noise sensitive area. Avoid overflying Kananaskis Village, Nakiska & golf course. Min cruising alt 1000 AGL within 1NM. High density heli tfc - see Canmore VTFC.	

CANADA FLIGHT SUPPLEMENT / GPH 205

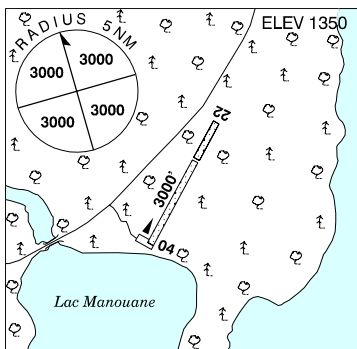
Effective 0901Z 20 November 2008 to 0901Z 15 January 2009

B434 AERODROME/FACILITY DIRECTORY

KANAWATA AEROPARC QC

CSJ2

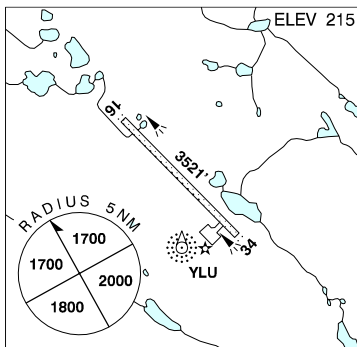
REF	N47 35 41 W74 08 01 21SSW 16°W UTC-5(4) Elev 1350' A5002 F-21
OPR	Pourvoirie Kanawata Inc 819-666-2007, Fax 819-666-2007 Reg PPR
PF	C-1,5,1td
FLT PLN	(bil) NOTAM FILE CYRJ Québec 866-GOMÉTÉO or 866-WXBRIEF (Toll free within Canada) or 866-541-4105 (Toll free within Canada & USA)
SERVICES FUEL	100LL O/R
RWY DATA	Rwy 04/22 3000x100 sand/gravel Thld 22 displ 900'.
RCR	Opr No win maint. Ski ops.
COMM	
ATF	UNICOM ltd hrs O/T tfc 122.8 5NM 3400 ASL



KANGIQSUALUJUAQ (GEORGES RIVER) QC

CYLU

REF	N58 42 41 W65 59 34 1.2NW 29°W UTC-5(4) Elev 215' A5027 D-15 LO5 CAP
OPR	Administration Régionale Kativik 819-964-2968 14-22Z† Mon-Fri O/T 819-964-3434 Ext 154 Fax 819-964-2462 Cert
PF	A-1 C-2,4,5
FLT PLN	NOTAM FILE CYVP (bil) Québec 866-GOMÉTÉO or 866-WXBRIEF (Toll free within Canada) or 866-541-4105 (Toll free within Canada & USA)
ACC	Montréal 800-633-1353
CARS	819-337-5391 ltd hrs (see COMM)
WX	METAR dur CARS hrs.



SERVICES FUEL	JA-1, 100LL, PNR ltd hrs 819-337-5476. VISA credit card only. Other credit by prior arrng only, ctc 800-661-1771 ext. 3789
RWY DATA	Rwy 16(161°)/34(341°) 3521x100 gravel Rwy 16 up 1.9% first 2620'. Rwy 34 down 0.9% first 890'.
RCR	Opr
LIGHTING	16-AS(TE ME), 34-AS(TE ME) ARCAL-122.1 type J
COMM	
MF/ATF APRT RDO	aprt rdo (English only) ltd hrs O/T tfc 122.1 5NM 3300 ASL (CAR 602.98) 122.1 (V) 1230-2230Z†

CANADA FLIGHT SUPPLEMENT / GPH 205

Effective 0901Z 20 November 2008 to 0901Z 15 January 2009

AERODROME/FACILITY DIRECTORY B435

KANGIQSUALUJJUAQ (GEORGES RIVER) QC (Cont'd)

CYLU

NAV	NDB YLU 295 (M) N58 42 26 W65 59 23 003° 0.3NM to A/D Unmonitored when CARS clsd.
CAUTION	Winds: Possible discrepancy btwn reported & actual wind due to sur terrain. Terrain: Mtns 575 ASL 0.75NM E & 625 ASL 0.75NM S. Wildlife: Possibility of caribou on rwy Oct 1-Nov 30. Communication: Possibility of intermittent VHF communication in the SW quadrant.

KANGIQSUJUAQ (WAKEHAM BAY) QC

CYKG

REF	N61 35 19 W71 55 46 0.7SE 30°W UTC-5(4) Elev 501' A5033 D-15 LO5 CAP	
OPR	Administration Régionale Kativik 819-964-2968 14-22Z‡ Mon-Fri O/T 819-964-3434 Ext 154 Fax 819-964-2462 Cert	
PF	A-1 C-2,4,5	
FLT PLN	NOTAM FILE CYVP	
FIC	(bil) Québec 866-GOMÉTÉO or 866-WXBRIEF (Toll free within Canada) or 866-541-4105 (Toll free within Canada & USA)	
ACC	Montréal 800-633-1353	
CARS	819-338-3343 ltd hrs (see COMM)	
WX	METAR dur CARS hrs.	
SERVICES	FUEL 100LL(D) ltd, JA-1 PNR FCNQ Petro 819-338-3334 13-22Z‡ Mon-Fri O/T COOP 819-338-3252 svc chg. Visa and Master Card accepted. Credit by prior arg only, ctc 800-363-7610, allow 7 working days.	
RWY DATA	Rwy 15(151°)/33(331°) 3510x100 gravel. Rwy 15 down 1.7% last 1378' down 0.3%. RCR Opr	
LIGHTING	15-AS(TE ME), 33-AS(TE ME) ARCAL-122.1 type J	
COMM	DRCO (bil) Québec rdo 123.475 (FISE) 126.7 (bcst) MF/ATF apt rdo (English only) ltd hrs O/T tfc 122.1 5NM 3600 ASL (CAR 602.98) APRT RDO 122.1 (V) 1230-2230Z‡	
NAV	NDB YKG 358 (M) N61 35 27 W71 55 43 at A/D Unmonitored when CARS clsd.	
CAUTION	Turbulence & wind shear may be encountered when wind exceeds 20 kt.	

CANADA FLIGHT SUPPLEMENT / GPH 205

Effective 0901Z 20 November 2008 to 0901Z 15 January 2009

B436 AERODROME/FACILITY DIRECTORY

KANGIRSUK QC

CYAS

REF	N60 01 38 W69 59 57 0.5E 29°W UTC-5(4) Elev 403' D-15 A5027 A5033 LO5 HI1 CAP	
OPR	Administration Régionale Kativik 819-964-2968 14-22Z† Mon-Fri O/T 819-964-3434 Ext 154 Fax 819-964-2462 Cert	
PF	A-1 C-2,4,5	
FLT PLN	NOTAM FILE CYVP	
FIC	(bil) Québec 866-GOMÉTÉO or 866-WXBRIEF (Toll free within Canada) or 866-541-4105 (Toll free within Canada & USA)	
ACC	Montréal 800-633-1353	
CARS WX	819-935-4056 ltd hrs (see COMM) METAR dur CARS hrs.	
SERVICES		
FUEL	100LL(D) ltd, JA-1 PNR FCNQ Petro 819-935-4686 13-22Z† Mon-Fri O/T COOP 819-935-4382 svc chg. VISA and Master Card accepted. Credit by prior arrng only, ctc 800-363-7610, allow 7 working days.	
RWY DATA RCR	Rwy 04(038°)/22(218°) 3421x100 gravel. Rwy 04 up 1.85%. Thld 04 displ 100'. Opr	
LIGHTING	04-AS(TE ME), 22-AS(TE ME) ARCAL-122.1 type J	
COMM		
DRCO MF/ATF APRT RDO	(bil) Québec rdo 126.7 (FISE) aprt rdo (English only) ltd hrs O/T tfc 122.1 5NM 3500 ASL (CAR 602.98) 122.1 (V) 1230-2230Z†	
NAV		
NDB	YAS 221 (M) N60 01 32 W70 00 17 at A/D	
CAUTION	Winds: Possible discrepancy btwn reported & actual wind due to surrounding terrain. Approach: Road, 400' fr thld 04, crosses apch to rwy 04. Wildlife: Bird activity at the garbage dump, loc 1100' SSE of thld 04.	

KAPUSKASING ON

CYYU

REF	N49 24 42 W82 28 07 2W 10°W UTC-5(4) Elev 743' A5009 E-18 F-21 LO4 HI4 CAP	
OPR	The Corporation of the Town of Kapuskasing 705-335-2611 Aprt 705-335-2341 Town Cert	
PF	B-1,6 C-2,3,4,5	
FLT PLN	NOTAM FILE CYYU	
FIC	London 866-WXBRIEF (Toll free within Canada) or 866-541-4104 (Toll free within Canada & USA)	
WX	METAR H24. TAF H24, issue times: 02, 08, 14, 20Z.	
SERVICES	Call out chg may be levied for one or more svcs.	
FUEL OIL	100LL, JA-1, 705-335-0872 PNR 65, 80, 100	

CANADA FLIGHT SUPPLEMENT / GPH 205

Effective 0901Z 20 November 2008 to 0901Z 15 January 2009

AERODROME/FACILITY DIRECTORY B437

KAPUSKASING ON (Cont'd)

CYYU

RWY DATA	Rwy 17(166°)/35(346°) 5500x100 asphalt Rwy 10(099°)/28(279°) 3590x75 asphalt
RCR	London FIC CRFI/RSC avbl ltd hrs. PLR/PCN
LIGHTING	17-AO(TE ME) P2, 35-AO(TE ME) P2 ARCAL-122.2 type K
COMM	
RCO	London rdo 123.275 (FISE) 126.7(bcst)
MF	tfc 122.2 5NM 3700 ASL (CAR 602.98)
NAV	
NDB	KASING YYU 341 (M) N49 27 53 W82 30 21 166° 3.0NM to A/D
DME	YU 109.3 Ch 30 N49 24 43 W82 27 54 (750') at A/D

KAPUSKASING (SENSENBRENNER HOSP) ON (Heli)

CKP7

REF	N49 25 30 W82 25 37 Adj N 10°W UTC-5(4) Elev 783' A5009	
OPR	Sensenbrenner Hospital 705-337-4012 Cert PPR	
PF	A-1,4 C-2,3,5,6	
FLT PLN	NOTAM FILE CYYU	
FIC	London 866-WXBRIEF (Toll free within Canada) or 866-541-4104 (Toll free within Canada & USA)	
PAD DATA	86' dia, 114' dia turf Rstd max heli Length 57.5'	
RCR	Opr	
COMM		
RCO	London rdo 123.275 (FISE)	
MF	tfc 122.2 5 NM centred on Kapuskasing A/D 2NM W 3700 ASL (CAR 602.98)	
PRO	Arr/dep 295°-298° fr Heli	

KARS / RIDEAU VALLEY AIR PARK ON

CPL3

REF	N45 06 W75 38 3S 14°W UTC-5(4) Elev 286' A5000 A5002 F-21	
OPR	Tom Bennett 613-692-3827 Reg PPR	
PF	C-1,2,4,5 D-3,6	
FLT PLN	(bil) NOTAM FILE CYND	
FIC	Québec 866-GOMÉTÉO or 866-WXBRIEF (Toll free within Canada) or 866-541-4105 (Toll free within Canada & USA)	
RWY DATA	Rwy 08/26 1800x100 turf	
RCR	Opr No win maint. May be soft in spring.	
COMM		
ATF	tfc 123.4 5NM 3300 ASL excluding the airspace that lies within Ottawa TCA class D airspace	
PRO	Glider activity in area.	

CANADA FLIGHT SUPPLEMENT / GPH 205

Effective 0901Z 20 November 2008 to 0901Z 15 January 2009

B438 AERODROME/FACILITY DIRECTORY

KASABONIKA ON

CYAQ

REF	N53 31 29 W88 38 35 1W 6°W UTC-6(5) Elev 672' A5017 E-17 LO3 CAP	
OPR	Govt of Ontario 807-473-2082 Cert	
PF	C-1,4 Tml bldg opr 14-23Z± Mon-Fri exc hols	
FLT PLN	NOTAM FILE CYXL	
FIC	Winnipeg 866-WXBRIEF (Toll free within Canada) or 866-541-4103 (Toll free within Canada & USA)	
RWY DATA	Rwy 03(033°)/21(213°) 3518x100 gravel Rwy 21 up 1.09%	
RCR	APM 807-535-1115 14-23Z± Mon-Fri exc hols. Rwy strength & cond subject to seasonal & climatic var.	
LIGHTING	03-(TE LO) AP, 21-(TE LO) AP ARCAL-123.2 type K for APAPI, rwy lgts low ints only.	
COMM	ATF tfc 123.2 5NM 3700 ASL	
NAV	NDB YAQ 200 (L) N53 31 39 W88 37 45 257° 0.5NM to A/D Unmonitored	

KASBA LAKE NT

CJL8

REF	N60 17 31 W102 30 07 10°E UTC-6(5) Elev 1131' A5031 A5024 D-13 RCAP	
OPR	Kasba Lake Lodge 250-248-3572 Fax 250-248-4576 Reg PPR	
PF	C-1,2,5 PNR	
FLT PLN	NOTAM FILE CYSM	
FIC	North Bay 866-WXBRIEF (Toll free within Canada) or 866-541-4109 (Toll free within Canada & USA)	
ACC	Edmonton IFR 888-358-7526 or 780-890-8304/8305	
SERVICES	Prior arrg only thru Opr	
FUEL	100, JA	
S	4 Jun-Sep	
RWY DATA	Rwy 02(017°)/20(197°) 6155x100 clay/gravel Rwy 02 down 0.58%	
RCR	Opr No win maint	
COMM	ATF UNICOM (AU) ltd hrs O/T tfc 122.8 5NM 4200 ASL	
CAUTION	Wildlife frequently on rwy.	

CANADA FLIGHT SUPPLEMENT / GPH 205

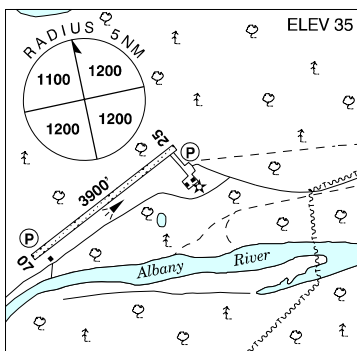
Effective 0901Z 20 November 2008 to 0901Z 15 January 2009

AERODROME/FACILITY DIRECTORY B439

KASHECHEWAN ON

CZKE

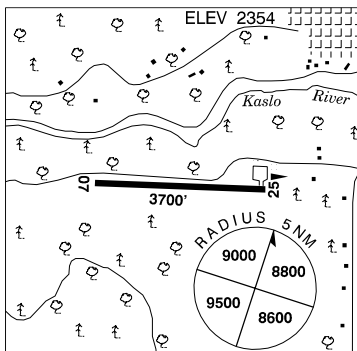
REF	N52 16 57 W81 40 40 0.7W 12°W UTC-5(4) Elev 35' A5018 E-18 LO3 RCAP
OPR	Govt of Ontario 807-473-2082 Cert
PF	C-1,2,4,5
FLT PLN	NOTAM FILE CYAT
FIC	London 866-WXBRIEF (Toll free within Canada) or 866-541-4104 (Toll free within Canada & USA)
RWY DATA	Rwy 07(065°)/25(245°) 3900x100 gravel
RCR	Opr 13-22Z† Mon-Fri exc hols APM 705-275-4457 Rwy cond subject to seasonal & climatic
LIGHTING	07-(TE ME) AP, 25-(TE ME) AP ARCAL-122.8 type K
COMM	
ATF	tfc 122.8 5NM 3000 ASL
PRO	Rgt hand circuits rwy 25 (CAR 602.96).



KASLO BC

CBR2

REF	N49 54 13 W116 56 07 1W 18°E UTC-8(7) Elev 2354' A5005 E-15
OPR	Village 250-353-2311 Reg
PF	C-1,2,4,5
FLT PLN	NOTAM FILE CYCG
FIC	Kamloops 866-WXBRIEF (Toll free within Canada) or 866-541-4101 (Toll free within Canada & USA)
RWY DATA	Rwy 07/25 3700x60 asphalt
RCR	Opr No win maint
COMM	
ATF	tfc 123.2 5NM 5400 ASL
CAUTION	Narrow mountainous valley. Terrain rises rapidly W of thld rwy 07. Vehicle tfc & logging truck activity on adj road, verify rwy unobstructed. Wildlife in vicinity. Ultra-light acft may be NORDO.



CANADA FLIGHT SUPPLEMENT / GPH 205

Effective 0901Z 20 November 2008 to 0901Z 15 January 2009

B440 AERODROME/FACILITY DIRECTORY

KATTINIQ / DONALDSON QC

CTP9

REF	N61 39 44 W73 19 17 10SE 29°W UTC-5(4) Elev 1902' A5033 D-15 LO5 H11 CAP	
OPR	Xstrata Nickel - Mine Raglan 819-762-7800 Ext 5183/5020 Reg PPR	
PF	C-1,2,4,5	
FLT PLN	(bil) NOTAM FILE CYVP	
FIC	(bil) Québec 866-GOMÉTÉO or 866-WXBRIEF (Toll free within Canada) or 866-541-4105 (Toll free within Canada & USA)	
ACC	Montréal 800-633-1353	
RWY DATA	Rwy 11 (111°)/29(291°) 6500x150 gravel Thld 11 displ 800'. Rwy 11 down 0.66%.	
RCR	Opr Sep-May ltd win maint	
LIGHTING	11-AS(T ME) P2, 29-AN(T ME) P2	
COMM		
ATF	UNICOM (AU) Mon, Wed & Thu 1230-23Z O/T ftc 122.8 5NM 4900 ASL	
NAV		
VOR/DME	X7 114.5 Ch 92 N61 39 39 W73 19 00 (1915') at A/D Pvt	
CAUTION	Turbulence & wind shear may be encountered when wind exceeds 20 kt. Blasting Ops, 3 sites aprx 3.6NM, 10NM & 11NM NW of A/D up to 6000 ASL. Lgtd obst 2036 ASL (158 AGL) 0.86NM NNE of thld 29. Ctc unicom prior entering area. Large presence of caribou and migratory birds, May-Oct.	

KEENE / ELMHIRST'S RESORT ON

CPS2

REF	N44 15 W78 07 3E 12°W UTC-5(4) Elev 650' A5000 F-21	
OPR	Elmhirst's Resort (Keene) Ltd 705-295-4591 Reg PPR	
PF	B-1,2,5 C-4 D-3,6	
FLT PLN	NOTAM FILE CYPQ	
FIC	London 866-WXBRIEF (Toll free within Canada) or 866-541-4104 (Toll free within Canada & USA)	
SERVICES	O/R	
FUEL	100LL, MG-1	
OIL	80, 100	
RWY DATA	Rwy 06/24 2800x50 turf	
RCR	Opr Ltd win maint	
COMM		
ATF	UNICOM ltd hrs O/T ftc 122.8 5NM 3700 ASL	
PRO	Seaplane activity at adj base. Rwy rises fr both thlds, one thld not vis fr opposite thld.	

CANADA FLIGHT SUPPLEMENT / GPH 205

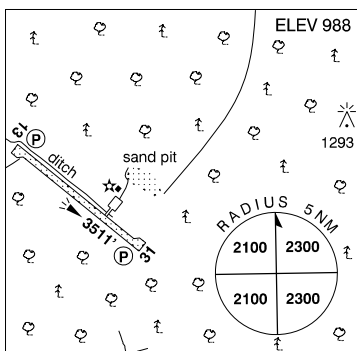
Effective 0901Z 20 November 2008 to 0901Z 15 January 2009

AERODROME/FACILITY DIRECTORY B441

KEEWAYWIN ON

CPV8

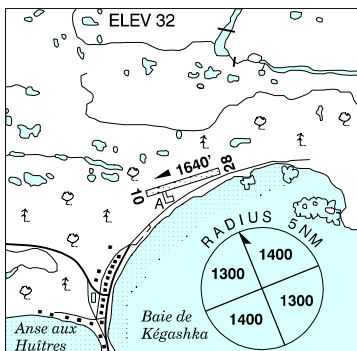
REF	N52 59 28 W92 50 11 2SW 1°W UTC-6(5) Elev 988' A5017 E-17 LO3
OPR	Govt of Ontario 807-473-2082 Cert
FLT PLN	NOTAM FILE CYXL
FIC	Winnipeg 866-WXBRIEF (Toll free within Canada) or 866-541-4103 (Toll free within Canada & USA)
RWY DATA	Rwy 13(130°)/31(310°) 3511x100 gravel
RCR	Opr 14-23Z± Mon-Fri exc hols. Subject to seasonal & climatic vars.
LIGHTING	13-(TE ME) AP, 31-(TE ME) AP ARCAL-123.2 type K
COMM	
ATF	tfc 122.8 5NM 4000 ASL



KEGASKA QC

CTK6

REF	N50 11 45 W61 15 57 1N 22°W UTC-5(4) Elev 32' A5011 E-19 F-22 LO7 LO8 HI6 CAP
OPR	Transport Québec 418-726-3637 Cert
FLT PLN	(bil) NOTAM FILE CYZV
FIC	Québec 866-GOMÉTÉO or 866-WXBRIEF (Toll free within Canada) or 866-541-4105 (Toll free within Canada & USA)
ACC	Montréal 800-633-1353
RWY DATA	Rwy 10(095°)/28(275°) 1640x85 gravel Opr Snow removal 11-16Z
COMM	
ATF	Corridor tfc 123.5 aprx 30NM wide along the shore up to and including 12,500 ASL, see Section C Québec.

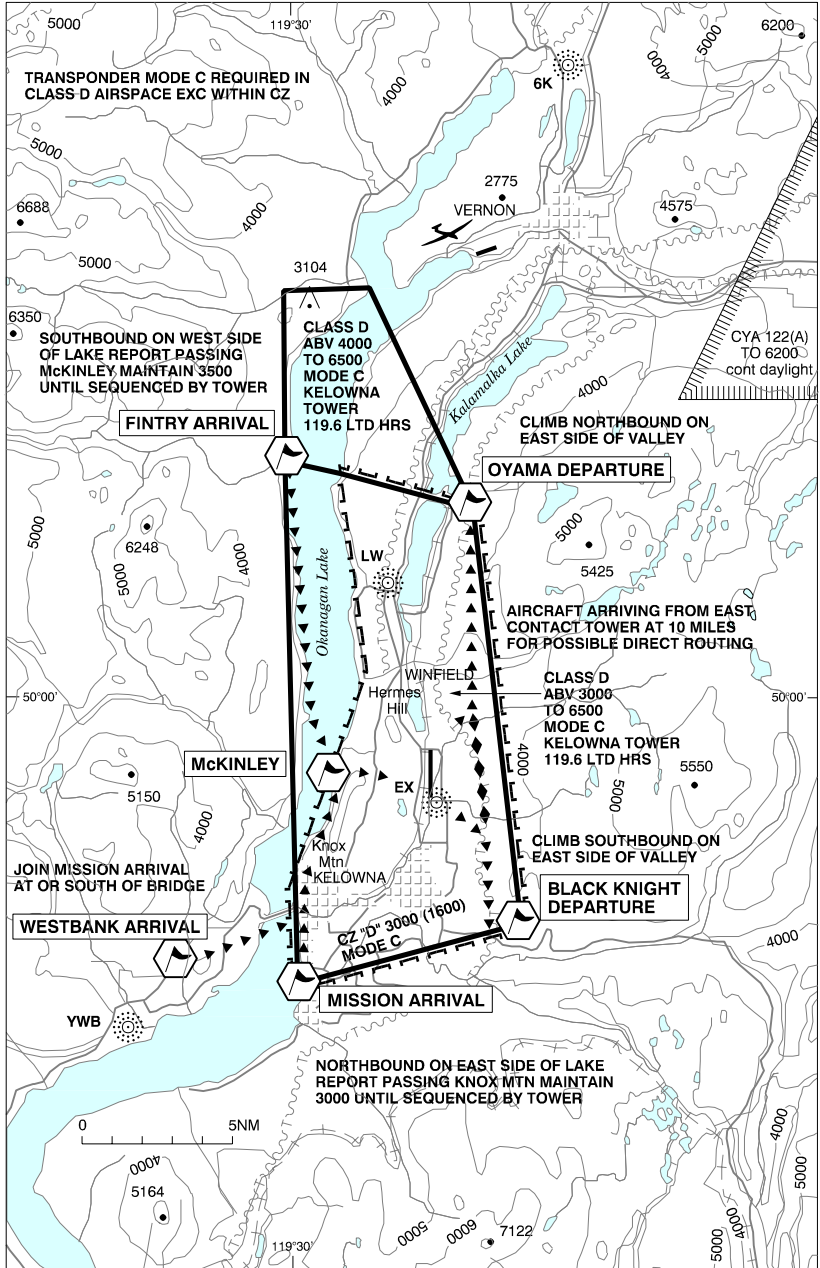


CANADA FLIGHT SUPPLEMENT / GPH 205

Effective 0901Z 20 November 2008 to 0901Z 15 January 2009

B442 AERODROME/FACILITY DIRECTORY

KELOWNA VFR TERMINAL PROCEDURES CHART

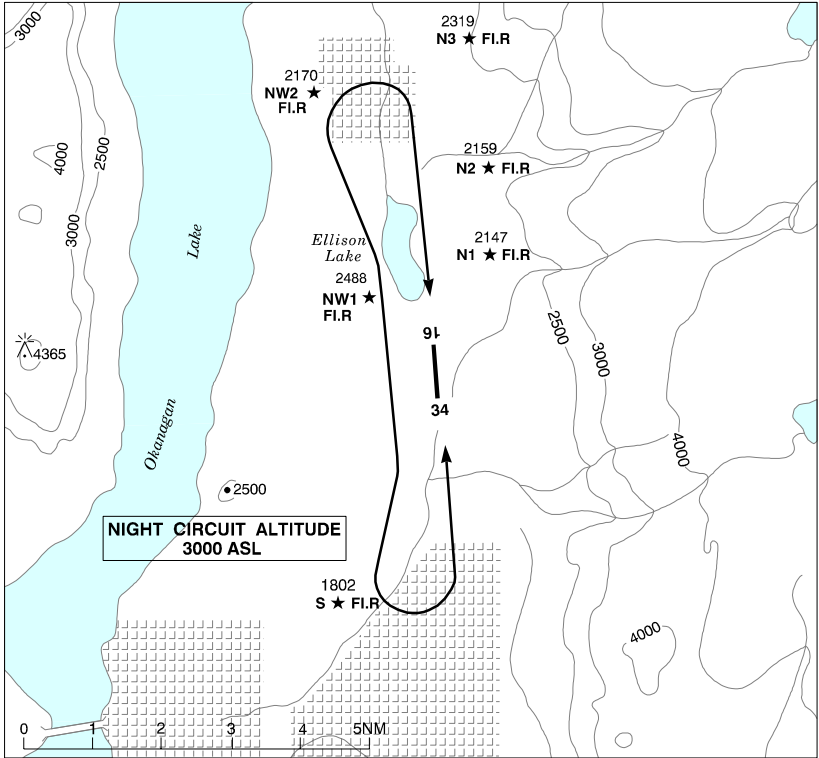


CANADA FLIGHT SUPPLEMENT / GPH 205

Effective 0901Z 20 November 2008 to 0901Z 15 January 2009

AERODROME/FACILITY DIRECTORY B443

KELOWNA VFR TERMINAL PROCEDURES CHART - NIGHT CIRCUIT PROCEDURE



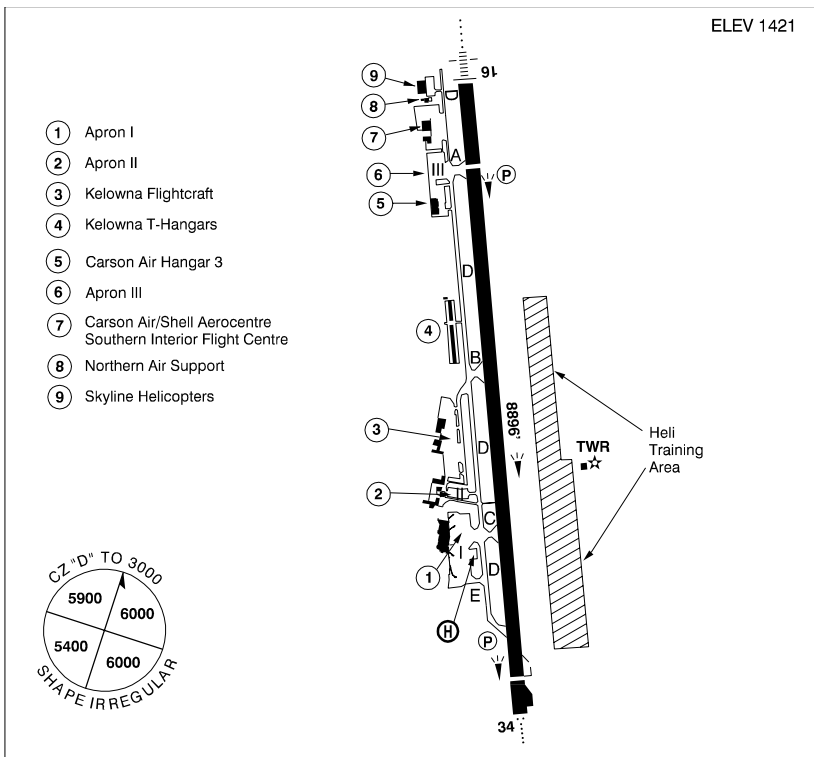
CANADA FLIGHT SUPPLEMENT / GPH 205

Effective 0901Z 20 November 2008 to 0901Z 15 January 2009

B444 AERODROME/FACILITY DIRECTORY

KELOWNA BC

CYLW



REF	N49 57 26 W119 22 40 6.2NE 18°E UTC-8(7) Elev 1421' A5005 E-15 LO2 HI3 CAP RCAP
OPR	City of Kelowna 250-765-8678 Cert
PF	A-1,2,3,6 C-4,5
CUST	AOE 888-226-7277
FLT PLN	NOTAM FILE CYLW
FIC	Kamloops 866-WXBRIEF (Toll free within Canada) or 866-541-4101 (Toll free within Canada & USA)
WX	Legacy AWOS WxCam TAF H24, issue times: 01, 07, 13, 19Z.
PIK	Kelowna Shell Aerocentre main floor pilot lounge, 0530-2000 hrs lcl, fueler is on call 24 hrs.
SERVICES	Kelowna Shell Aerocentre
FUEL	100LL, JA-1 (CON S IP JA-1, FSII)
OIL	All
S	1,2,3,4,5,6
ARFF	6 14-08Z† O/T call out chg 2 hrs PNR; aprt clsd to acct 20 seats & abv, exc for diversions or as an altn A/D without PPR. Discrete emerg freq 122.675.
SUP FL	LHOX, D-Ice, ADI
JASU	CEA2, CE3, CE14
PVT ADV	Kelowna Shell Aerocentre 123.0 250-765-8155
MIL CON	Kelowna Shell Aerocentre (Shell) 250-765-8155

CANADA FLIGHT SUPPLEMENT / GPH 205

Effective 0901Z 20 November 2008 to 0901Z 15 January 2009

AERODROME/FACILITY DIRECTORY B445

KELOWNA BC (Cont'd)

CYLW

RWY DATA	Rwy 16(157°)/34(337°) 8896x200 asphalt. Thld 16 disp 1200' Thld 34 disp 400' Rwy 16 down 0.9% first 7237' Rwy 34 down 0.6% first 1663'
TWY	Twy D (north of twy A) rstd to acft with wingspans less than 79'. Twy D (south of twy A) & twy E rstd to acft with wingspans less than 125'.
APRON	Apron II Itinerant Apron, due to ltd wing tip clnc PPR for acft with wingspans greater than 52' call Opr. Apron II rstd to 12,500 lbs. Touchdown pads adj to Apron 1 rstd; max length 40'
RCR	Twr 250-765-3426 CRFI, PLR/PCN
LIGHTING	16-AN (TE ME) P2 3.2°, 34-AO (TE ME) P2 PAPI rwy 34 OCL to 2NM; PAPI rwy 16 OCL to 3NM. Twy D (north of twy A) RR
COMM	RCO Penticton rdo 119.6 (RAAS) 0630-14Z‡ Pacific rdo 126.7 (FISE) ATIS 127.5 14-0630Z‡ 250-491-0310 GND 121.7 14-0630Z‡ TWR 119.6 292.2 (E) 14-0630Z‡ (emerg only 250-765-3426) MF Penticton rdo 119.6 0630-14Z‡ CZ shape irregular 3000 ASL, comm blind spots all quads (CAR 602.98) VDF 119.6 (V) 14-0630Z‡
NAV	VOT 114.8 NDB LW 257 (M) N50 03 39 W119 24 59 147° 5.9NM to A/D RUTLAND EX 374 (L) N49 56 23 W119 22 32 337° 1.0NM to A/D WESTBANK YWB 389 (M) N49 48 38 W119 37 50 030° 13.1NM to A/D DME ILW 111.3 Ch 50 N49 57 47 W119 22 37 at A/D ILS ILW 111.3 (Rwy 16)
PRO	Transponder mode C rqrd within Class D airspace exc within Kelowna CZ. See VTPC for arr/dep rtes & pro. Day: circuit hgt 2500 ASL rgt hand circuits rwy 34 (CAR 602.96). Night: circuit hgt 3000 ASL, follow VTPC night circuit pro. See VTPC. Aprons I, II, III are rstd to fixed-wing acft only. Touchdown pads adj to Apron 1 rstd; security escort required. Contact OPR.
CAUTION	Only pilots familiar with lcl terrain should use this A/D dur hrs of darkness. Ngt ops not recommended unless all 6 hazard beacons oprg. Ocsl glider activity to 12,500' vic Vernon A/D. Daily radiosonde balloon launches with an ascent rate of 1000 ft/min btwn the hrs of 1115-1345Z & 2315-0145Z. Heli Training Areas: uneven terrain, numerous obstacles.

CANADA FLIGHT SUPPLEMENT / GPH 205

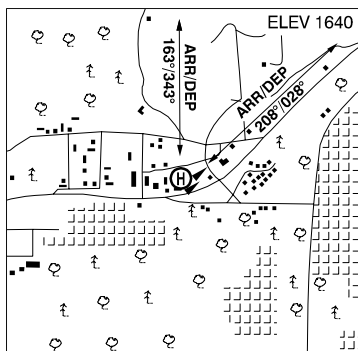
Effective 0901Z 20 November 2008 to 0901Z 15 January 2009

B446 AERODROME/FACILITY DIRECTORY

KELOWNA (ALPINE) BC (Heli)

CAB7

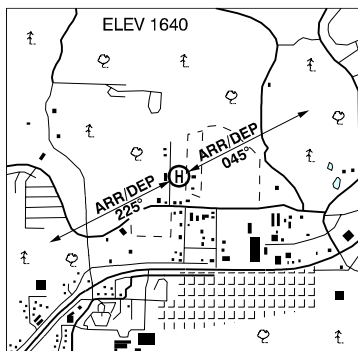
REF	N49 52 W119 34 18°E UTC-8(7) Elev 1640' A5004 A5005
OPR	Alpine Helicopters Ltd 250-769-4111 Cert PPR
FLT PLN	NOTAM FILE CYLW FIC Kamloops 866-WXBRIEF (Toll free within Canada) or 866-541-4101 (Toll free within Canada & USA)
PAD DATA	120' x 120' RCR Opr
LIGHTING	Portable LO perimeter & apch lghts.
COMM	RCO Pacific rdo 126.7 (FISE) TWR Kelowna 119.6 14-0630Z± MF Pentiction rdo 119.6 0630-14Z± Kelowna CZ shape irregular 3000 ASL (CAR 602.98)
PRO	Day: Arr/dep to/fr 343° and 028° routes. Night: Arr/dep to/fr 028° route. Transponder Mode C rqr'd within Class D airspace exc within Kelowna CZ.
CAUTION	Rising terrain to the NW & SW.



KELOWNA (WILDCAT HELICOPTERS) BC (Heli)

CWC2

REF	N49 52 02 W119 34 46 18°E UTC-8(7) Elev 1640' A5004 A5005
OPR	Wildcat Helicopters Inc. 250-769-9093 Cert PPR
PF	A-1 B-3 C-2,5,6 D-4
FLT PLN	NOTAM FILE CYLW FIC Kamloops 866-WXBRIEF (Toll free within Canada) or 866-541-4101 (Toll free within Canada & USA)
SERVICES	FUEL Jet A OIL MOBIL JET II and 254 S 1,2,3,4,5,6
PAD DATA	100' x 100' asphalt/concrete 20' x 20' asphalt/concrete 17,000 lbs rstd to Bell 214B RCR OPR
COMM	RCO Pacific rdo 126.7 (FISE) TWR Kelowna 119.6 14-0630Z± MF Pentiction rdo 119.6 0630-14Z± Kelowna CZ shape irregular 3000 ASL (CAR 602.98)
PRO	Arr/dep 225° & 045°. Use steep apch. Transponder Mode C rqr'd within Class D airspace exc within Kelowna CZ.



CANADA FLIGHT SUPPLEMENT / GPH 205

Effective 0901Z 20 November 2008 to 0901Z 15 January 2009

AERODROME/FACILITY DIRECTORY B447

KELSEY MB

CZEE

REF	N56 02 15 W96 30 35 2E 3°E UTC-6(5) Elev 600' aprx A5016 A5024 D-14 E-16 E-17 LO3 RCAP	
OPR	Manitoba Hydro 204-778-1121 Reg	
PF	B-1	
FLT PLN FIC	NOTAM FILE CYTH Winnipeg 866-WXBRIEF (Toll free within Canada) or 866-541-4103 (Toll free within Canada & USA)	
RWY DATA RCR	Rwy 11(114°)/29(294°) 2590x75 gravel Rwy 11 slopes down. Opr	
LIGHTING	11-(TE ME), 29-(TE ME) ARCAL -122.8 Type K	
COMM ATF	UNICOM 14-23Z± O/T tfc 122.8 5NM 3600 ASL	
NAV NDB	4W 391 (L) N56 02 15 W96 30 46 at A/D Pvt Unmonitored	
CAUTION	Lgtd twr 896 ASL (296 AGL) 1NM W of A/D.	

KELVINGTON SK

CKV2

REF	N52 08 00 W103 32 05 1.2S 11°E UTC-6 Elev 1860' A5006 E-16 E-17	
OPR	Town of Kelvington 306-327-4482 Reg	
PF	C-1, 2, 4, 5, 6	
FLT PLN FIC	NOTAM FILE CYXE Edmonton 866-WXBRIEF (Toll free within Canada) or 866-541-4102 (Toll free within Canada & USA)	
SERVICES S	4,5	
RWY DATA RCR	Rwy 17(169°)/35(349°) 2500x150 turf. Mr. James Hendren 306-327-4875. Ltd win maint	
COMM ATF	tfc 123.2 5NM 4900 ASL	
CAUTION	Lgtd twr 2345 ASL (370 AGL) 1.3NE A/D.	

KEMANO BC (Heli)

CBZ2

REF	N53 34 W127 57 21°E UTC-8(7) Elev 160' A5013
OPR	Alcan Inc 250-639-8458 Reg PPR
FLT PLN FIC	NOTAM FILE CYXT Kamloops 866-WXBRIEF (Toll free within Canada) or 866-541-4101 (Toll free within Canada & USA)

CANADA FLIGHT SUPPLEMENT / GPH 205

Effective 0901Z 20 November 2008 to 0901Z 15 January 2009

B448 AERODROME/FACILITY DIRECTORY

KEMANO BC (Heli) (Cont'd)

CBZ2

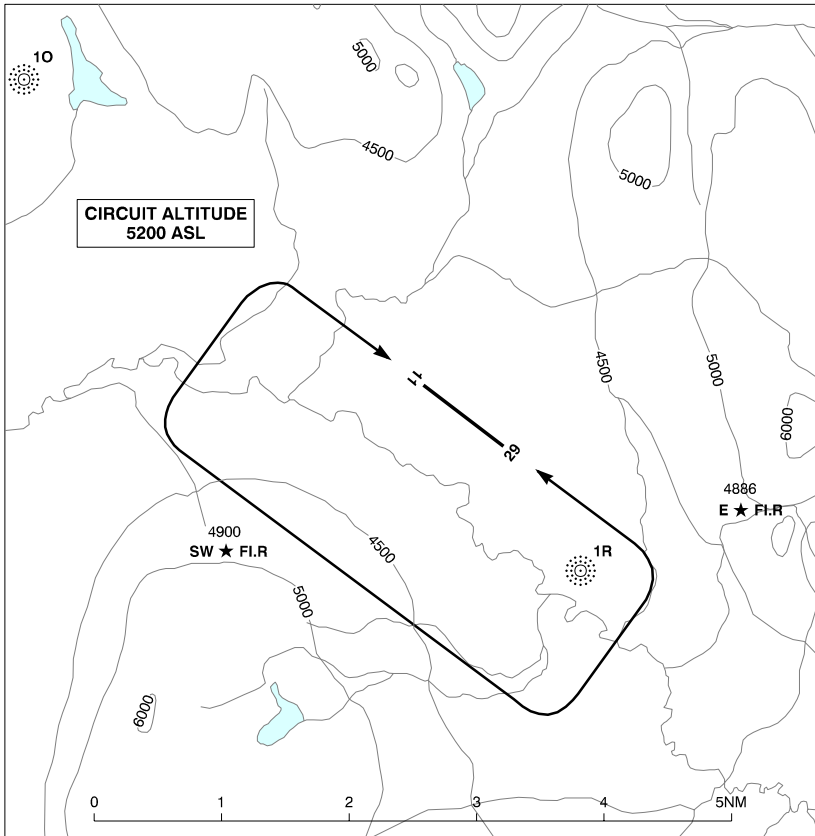
COMM

ATF tfc 123.2 5NM 3200 ASL
A/G 153.590 MHZ

PAD DATA

200' x 200' asphalt

KEMESS CREEK VFR TERMINAL PROCEDURES CHART



CANADA FLIGHT SUPPLEMENT / GPH 205

Effective 0901Z 20 November 2008 to 0901Z 15 January 2009

AERODROME/FACILITY DIRECTORY B449

KEMESS CREEK BC

CBQ7

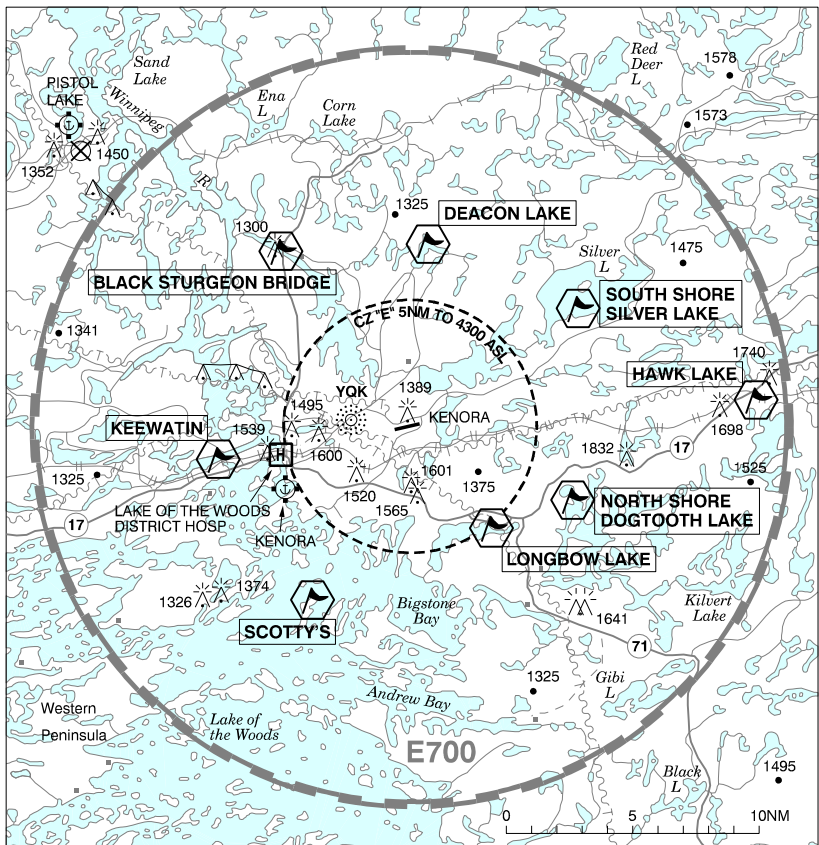
REF	N56 58 28 W126 44 28 23°E UTC-8(7) Elev 4191' A5022 D-12 LO1 RCAP	
OPR	Northgate Minerals Corporation Kemess Mine 604-639-8566 Reg PPR	
FLT PLN	NOTAM FILE CYYD FIC Kamloops 866-WXBRIEF (Toll free within Canada) or 866-541-4101 (Toll free within Canada & USA)	
RWY DATA	Rwy 11(105°)/29(285°) 4671x75 gravel RCR Opr Regular sum maint (grading, packing), ltd win maint.	
LIGHTING	11-(TE ME) P1 3.0° OCL to 3NM, 29-AS AO(TE ME) P1 4.5° OCL to 2NM ARCAL-123.2 type K	
COMM	ATF UNICOM (AU) 123.2	
NAV	NDB 1O 341 (L) N57 01 09 W126 50 53 104° 4.4NM to A/D Pvt WHITNEY 1R 374 (L) N56 57 09 W126 42 52 303° 1.6NM to A/D Pvt The 1O and 1R NDB's are activated by acft rdo on freq 122.8 in the same manner as ARCAL type J lgt systems.	
PRO	Rgt hand circuits rwy 11 (CAR 602.96)	
CAUTION	Open pit mine blasting aprx 1.5NM to the N of aprt ocsl by NOTAM. Higher terrain on apch near thld of rwy 29. Only pilots familiar with lcl terrain should use this A/D dur hrs of darkness. Ngt ops not recommended unless both hazard bcns oprg.	

CANADA FLIGHT SUPPLEMENT / GPH 205

Effective 0901Z 20 November 2008 to 0901Z 15 January 2009

B450 AERODROME/FACILITY DIRECTORY

KENORA VFR TERMINAL PROCEDURES CHART



LOCATION	IDENT	LAT/LONG
BLACK STURGEON BRIDGE	VCBSF	N49° 54.08 W94° 29.31
DEACON LAKE	VCDNL	N49° 54.36 W94° 20.45
HAWK LAKE	VCHKL	N49° 48.53 W94° 00.52
KEEWATIN	VCKWN	N49° 46.00 W94° 33.51
LONGBOW LAKE	VCLLK	N49° 43.22 W94° 16.77
NORTH SHORE DOGTOOTH LAKE	VCNSD	N49° 44.56 W94° 11.67
SCOTTY'S	VCTTY	N49° 40.52 W94° 27.69
SOUTH SHORE SILVER LAKE	VCSSL	N49° 51.91 W94° 11.44

KENORA FSS – RCO

Norway House 122.1 (RAAS) 13-02Z± (N53 57 W97 51)

Red Lake 122.3 (RAAS) 12-04Z± (N51 04 W93 48)

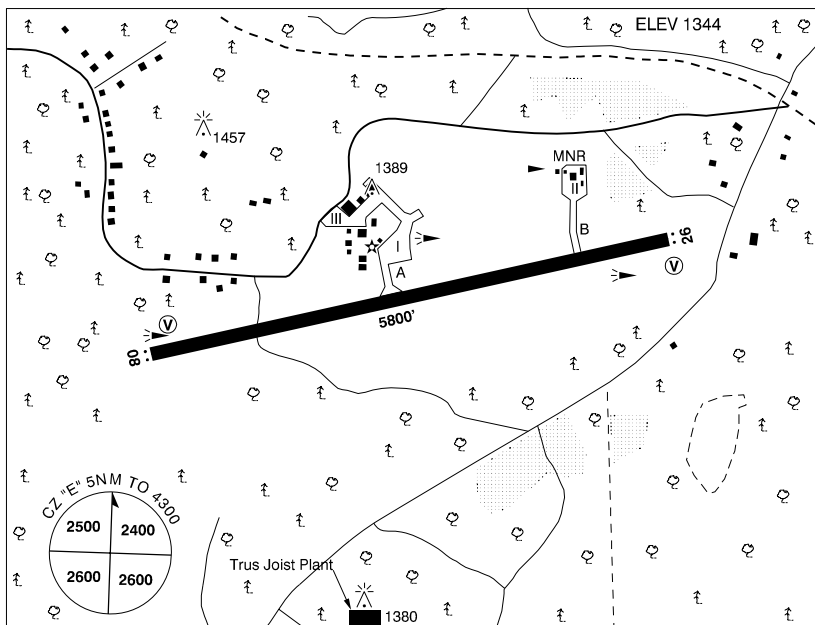
CANADA FLIGHT SUPPLEMENT / GPH 205

Effective 0901Z 20 November 2008 to 0901Z 15 January 2009

AERODROME/FACILITY DIRECTORY B451

KENORA ON

CYQK



REF	N49 47 18 W94 21 47 5ENE 2°E UTC-6(5) Elev 1344' A5007 E-17 LO4 HI4 CAP
OPR	Kenora Airport Authority Inc. 807-548-5377 Cert Ldg fees
PF	B-1,3,6 D-4 avbl 14-0030Z (DT 12-02Z) O/T D-1,2,3,4,5,6
CUST	AOE 888-226-7277 13-02Z‡, May 1-Oct 31; 13-21Z‡ Mon-Fri, Nov 1-Apr 30; exc hols.
FLT PLN	NOTAM FILE CYQK
FIG	Winnipeg 866-WXBRIEF (Toll free within Canada) or 866-541-4103 (Toll free within Canada & USA)
WX	METAR H24.
PIK	TAF H24, issue times: 02, 08, 14, 20Z. NAV CANADA T47 ATCO trailer, airside access
SERVICES	Call out chg may be levied after hrs
FUEL	100LL, JA-1 12-01Z‡ dly ctc 807-548-9907 O/T ctc 807-467-1396, call out chg. (CON S IP SP JA-1, FSII)
OIL	All
SUP FL	LHOX
JASU	Hobart 28V 300-1500 amps. Ctc Kenora Aprt Shell.
PVT ADV	Kenora Aprt Shell 122.85, MNR Ops 122.9
MIL CON	Kenora Aprt Shell 807-548-9907 12-01Z‡ O/T call out chg, ctc 807-467-1396
RWY DATA	Rwy 08(075°)/26(255°) 5800x150 asphalt Rwy 08 first 456' up 0.77%. Rwy 26 first 504' up 0.90%
RCR	Opr CRFI, PLR/PCN
LIGHTING	08-AS(TE ME) V1, 26-AS(TE ME) V1

CANADA FLIGHT SUPPLEMENT / GPH 205

Effective 0901Z 20 November 2008 to 0901Z 15 January 2009

B452 AERODROME/FACILITY DIRECTORY

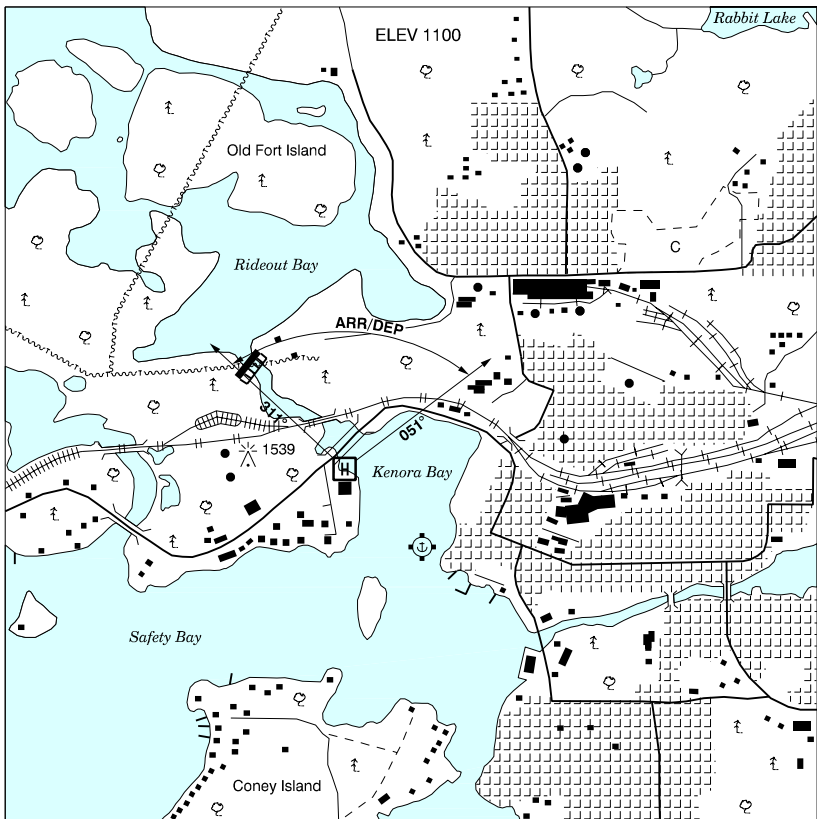
KENORA ON (Cont'd)

CYQK

COMM	
RADIO	122.2 327.7 (E) (emerg only 807-548-5076)
RCO	Winnipeg rdo 123.375 (FISE) 126.7 (bcst)
MF	rdo 122.2 5NM 4300 ASL (CAR 602.98)
VDF	122.2
NAV	
VOT	111.8
NDB	YQK 326 (M) N49 47 33 W94 25 27 098° 1.9NM to thld 08
VORTAC	SIoux NARROWS VBI 115.2 Ch 99 N49 28 37 W94 02 48 (1312') 323° 22.4NM to A/D
CAUTION	
Aerobatics may be in progress over aprt 4300 ASL & below. Gen avn tie down & prkg area unlgtd - DAY USE ONLY. Possibility of deer within aprt perimeter.	

KENORA (LAKE OF THE WOODS DISTRICT HOSP) ON (Heli)

CJG6



REF	N49 46 07 W94 29 56 Adj W 2°E UTC-6(5) Elev 1100' A5007
OPR	Lake of the Woods District Hosp 807-468-4598 Reg PPR
PF	C-1,2,3,4,5,6 MEDEVAC flts only

CANADA FLIGHT SUPPLEMENT / GPH 205

Effective 0901Z 20 November 2008 to 0901Z 15 January 2009

AERODROME/FACILITY DIRECTORY B453

KENORA (LAKE OF THE WOODS DISTRICT HOSP) ON (Heli) (Cont'd)

CJG6

FLT PLN	NOTAM FILE CYQK
FIG	Winnipeg 866-WXBRIEF (Toll free within Canada) or 866-541-4103 (Toll free within Canada & USA)
PAD DATA	115' dia concrete Rstd max heli length 57.3'
LIGHTING	RY ARCAL-123.2 key mic 3 times to turn lgts on. Key mic 5 times to turn lgts off.
COMM	
RADIO	Kenora rdo 122.2 327.7 (E) at Kenora A/D 5.4NM ENE (emerg only 807-548-5076)
RCO	Winnipeg rdo 123.375 (FISE) 126.7 (bcst)
MF	Kenora rdo 122.2 5NM 4300 ASL centred on Kenora A/D 5.4NM ENE (CAR602.98)
ATF	tfc 122.2 5NM 4300 ASL
NAV	
NDB	YQK 326 (M) N49 47 33 W94 25 27 242° 3.2NM to A/D
PRO	Do not overfly Big Fish due sporadic fountain. Arr/dep btwn 311°-051°.
CAUTION	Boat launched/towed parasailing vic Coney Island, SR to SS, 1 May-31 Oct, max alt 500 AGL. Kenora A/D 5.4NM ENE. Extended centre line rwy 08/26 Kenora intersects Heliport.

KENTVILLE (CAMP ALDERSHOT) NS (Heli)

CKM9

REF	N45 05 39 W64 30 32 0.5NW 20°W UTC-4(3) Elev 100' A5003	
OPR	DND 902-678-7930 Ext 2224 CSN 319-568-2224 Mil PPR	
FLT PLN	NOTAM FILE CYHZ PPR 24 hrs ntc. Ctc 902-678-7930 Ext 2224 or CSN 319-568-2224 12-20Z† Mon-Fri exc stat hols O/T ctc main gate Ext 2139	
FIG	Halifax 866-WXBRIEF or (French) 866-GOMÉTÉO (Toll free within Canada) or 866-541-4106 (Toll free within Canada & USA)	
ACC	Moncton 506-867-7176 or 866-480-8200 Flt Plns by Fax 506-867-7180 & include phone numbers where pilot can be reached prior to dep	
PAD DATA	500' x 500' turf/gravel. No win maint.	
COMM		
ATF	tfc 123.2 5NM 3100 ASL	
PRO	Arr/dep 075° fr heli	
CAUTION	CYR 706 (Aldershot) SFC-1000 0.8NM WNW. Valley Regional Hosp Heli (CKV8) 0.8NM SSE Waterville/Kings Co Muni Unicom (Ltd hrs) 122.8 7NM W	

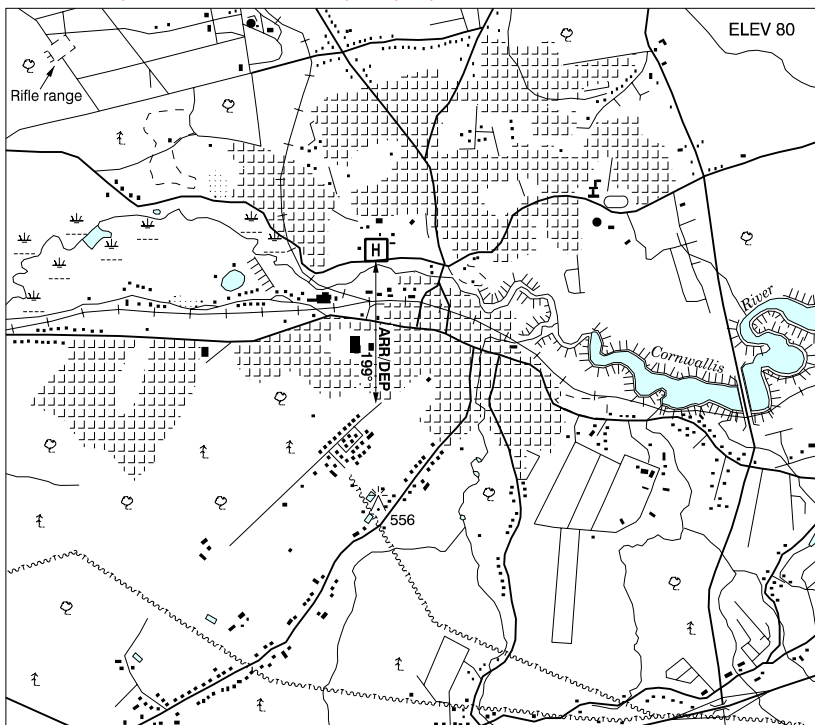
CANADA FLIGHT SUPPLEMENT / GPH 205

Effective 0901Z 20 November 2008 to 0901Z 15 January 2009

B454 AERODROME/FACILITY DIRECTORY

KENTVILLE (VALLEY REGIONAL HOSP) NS (Heli)

CKV8



REF	N45 04 54 W64 30 00 Adj 19°W UTC-4(3) Elev 80' A5003
OPR	Valley Regional Hosp 902-678-7381 Cert PPR
FLT PLN	NOTAM FILE CYHZ
FIC	Halifax 866-WXBRIEF or (French) 866-GOMÉTÉO (Toll free within Canada) or 866-541-4106 (Toll free within Canada & USA)
ACC	Moncton 506-867-7176 or 866-480-8200 Flt Plns by Fax 506-867-7180 & include phone numbers where pilot can be reached prior to dep
PAD DATA	82' dia asphalt (rstd to heli with max overall length of 52.5')
LIGHTING	RY(LO) ARCAL-123.0 type J
COMM	ATF tfc 123.2 5NM 3100 ASL
PRO	Arr/dep 199° fr heli.
CAUTION	Waterville/Kings Co Muni Unicom (Ltd hrs) 122.8 7NM W. CYR 706 (Aldershot) SFC-1000 1.4NM NW. Obstruction 556 ASL under arr/dep track - see sketch.

CANADA FLIGHT SUPPLEMENT / GPH 205

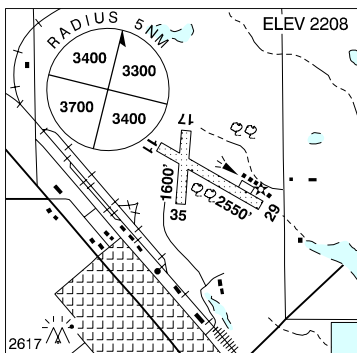
Effective 0901Z 20 November 2008 to 0901Z 15 January 2009

AERODROME/FACILITY DIRECTORY B455

KERROBERT SK

CJP2

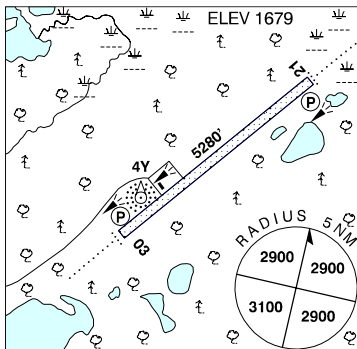
REF	N51 55 37 W109 07 46 Adj N 14°E UTC-6 Elev 2208' A5006 E-16
OPR	Town 306-834-7788 Reg
PF	C-1,2,4,5
FLT PLN	NOTAM FILE CYYN
FIC	Edmonton 866-WXBRIEF (Toll free within Canada) or 866-541-4102 (Toll free within Canada & USA)
RWY DATA	Rwy 11(109°)/29(289°) 2550x125 turf Rwy 17(171°)/35(351°) 1600x120 turf
RCR	Opr Ltd win maint. Soft when wet.
LIGHTING	11-(TE LO), 29-(TE LO)
COMM	
ATF	tfc 123.2 5NM 5300 ASL
PRO	Rgt hand circuits rwy 29 (CAR 602.96).



KEY LAKE SK

CYKJ

REF	N57 15 22 W105 37 03 13°E UTC-6 Elev 1679' A5024 D-13 LO1 HI2 HI3 RCAP
OPR	Cameco Corp 306-956-6502 Reg PPR
PF	A-1 D-2,4,5
FLT PLN	NOTAM FILE CZWL
FIC	Edmonton 866-WXBRIEF (Toll free within Canada) or 866-541-4102 (Toll free within Canada & USA)
ACC	Edmonton IFR 888-358-7526 or 780-890-8304/8305
WX	Legacy AWOS (see COMM).
RWY DATA	Rwy 03(030°)/21(210°) 5280x200 gravel Rwy 03 down 0.3%
RCR	306-884-2100 Ext 505 or Opr
LIGHTING	03-AD AS(TE LO) AP, 21-AD AS(TE LO) AP AD & TE non std.
COMM	
DRCO	Edmonton rdo 123.45 (FISE)
ATF	UNICOM ltd hrs O/T tfc 122.7 5NM 4700 ASL
Legacy AWOS	127.7 (YKJ)
NAV	
VOR/DME	YKJ 115.3 Ch 100 N57 10 02 W105 50 28 (1915) 041° 8.7NM to A/D



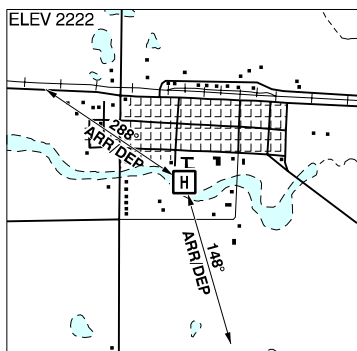
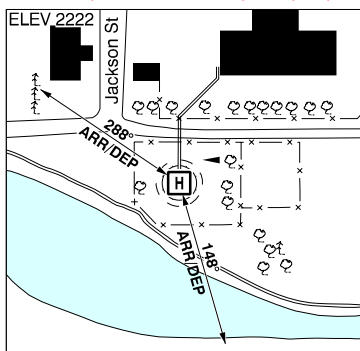
CANADA FLIGHT SUPPLEMENT / GPH 205

Effective 0901Z 20 November 2008 to 0901Z 15 January 2009

B456 AERODROME/FACILITY DIRECTORY

KILLAM (HEALTH CENTRE) AB (Heli)

CKH5

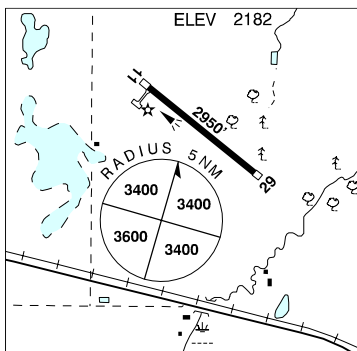


REF	N52 47 15 W111 51 35 Adj S 16°E UTC-7(6) Elev 2222' A5015
OPR	Killam Health Centre 780-385-3741 Cert PPR
PF	A-1,2,4 C-3,5
FLT PLN	NOTAM FILE CYLL
FIG	Edmonton 866-WXBRIEF (Toll free within Canada) or 866-541-4102 (Toll free within Canada & USA)
ACC	Edmonton IFR 888-358-7526 or 780-890-8304/8305
PAD DATA	39' dia concrete, 64' dia FATO, 85' dia grass safety area
RCR	Opr
LIGHTING	RY(LO) RF(FL)
COMM	
ATF	tfc 123.2 5NM centred on Killam land A/D 3NM E 5200 ASL
PRO	Single arr/dep paths brg 148° & 288° fr heli
CAUTION	P-lines NE of heli, twr E of heli.

KILLAM / KILLAM-SEDGEWICK AB

CEK6

REF	N52 48 W111 46 3E 16°E UTC-7(6) Elev 2182' A5015 E-16
OPR	Town of Killam 780-385-3977 Reg
PF	B-1 C-2,4,5
FLT PLN	NOTAM FILE CYLL
FIG	Edmonton 866-WXBRIEF (Toll free within Canada) or 866-541-4102 (Toll free within Canada & USA)
ACC	Edmonton IFR 888-358-7526 or 780-890-8304/8305
SERVICES	
FUEL	100LL
RWY DATA	Rwy 11/29 2950x75 asphalt
RCR	Opr Ltd maint
LIGHTING	11-(TE ME), 29-(TE ME) ARCAL-123.2 type K
COMM	
ATF	tfc 123.2 5NM 5200 ASL



CANADA FLIGHT SUPPLEMENT / GPH 205

Effective 0901Z 20 November 2008 to 0901Z 15 January 2009

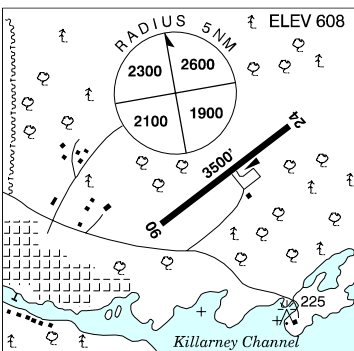
AERODROME/FACILITY DIRECTORY B457

KILLAM-SEDGEWICK AB — See KILLAM / KILLAM-SEDGEWICK

KILLARNEY ON

CPT2

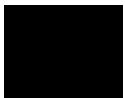
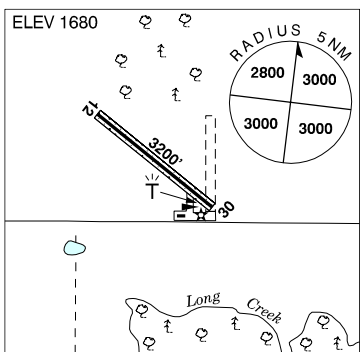
REF	N45 58 39 W81 29 41 AdjE 10°W UTC-5(4) Elev 608' A5000 A5001 F-21
OPR	Municipality of Killarney 705-287-2242 Reg aprt unattended
PF	B-1 C-2,3,4,5 D-6
FLT PLN	NOTAM FILE CYSB
FIC	London 866-WXBRIEF (Toll free within Canada) or 866-541-4104 (Toll free within Canada & USA)
SERVICES	
FUEL	100 PNR
RWY DATA	Rwy 06/24 3500x75 asphalt
RCR	arpt mgr 705-287-2242
LIGHTING	RR rwy, twy, apron. ARCAL-122.85 activates rwy alignment strobes (5 clicks on, 7 clicks off).
COMM	
ATF	tfc 122.8 5NM 3600 ASL



KILLARNEY MUNI MB

CJS5

REF	N49 09 06 W99 41 25 1.6SSW 7°E UTC-6(5) Elev 1680' A5007 E-16 E-17 LO4
OPR	Killarney Flying Club 204-523-7247/7122/4475 Reg PPR
PF	B-1 C-2,4,5
FLT PLN	NOTAM FILE CYBR
FIC	Winnipeg 866-WXBRIEF (Toll free within Canada) or 866-541-4103 (Toll free within Canada & USA)
SERVICES	For svcg 204-523-6316, 204-534-7609/7599
FUEL	100LL
OIL	All
RWY DATA	Rwy 12(122°)/30(302°) 3200x75 packed gravel/asphalt centre 30' asphalt
RCR	Opr Ltd win maint
LIGHTING	12-(TE LO), 30-(TE LO) Lgt on SS to SR with photo cell.
COMM	
ATF	tfc 123.2 5NM 4700 ASL
CAUTION	Lgtd twr 1940 ASL (315 AGL) 2NM NNE of A/D. Unlgtd twr 1830 ASL (164 AGL) 1.2E of A/D.



CANADA FLIGHT SUPPLEMENT / GPH 205

Effective 0901Z 20 November 2008 to 0901Z 15 January 2009

B458 AERODROME/FACILITY DIRECTORY

KIMMIRUT NU

CYLC

REF	N62 51 W69 53 32°W UTC-5(4) Elev 175' A5033 D-15 LO5 RCAP	
OPR	Govt of Nunavut, Iqaluit 867-897-3606 Cert	
PF	A-1 C-4,5 CARS ops hrs O/T PNR	
FLT PLN	NOTAM FILE CYLC	
FIC	North Bay 866-WXBRIEF (Toll free within Canada) or 866-541-4109 (Toll free within Canada & USA)	
ACC	Montréal 800-633-1353	
CARS	867-939-2254 ltd hrs (see COMM)	
WX	METAR dur CARS hrs.	
RWY DATA	Rwy 17/35 1900x75 gravel Thld 17:175' & thld 35:137' Rwy 17 down 2%	
RCR	CARS, ltd hrs O/T Council 867-939-2247	
LIGHTING	17-(TE LO), 35-(TE LO) ARCAL-122.1 type J	
COMM		
MF	aprt rdo ltd hrs O/T tfc 122.1 5NM 3200 ASL (CAR 602.98)	
APRT RDO	122.1 (V) 12-20Z± Mon & Fri, 13-21Z± Tue, Wed & Thu, exc federal observed hols.	
NAV		
NDB	YLC 277 (M) N62 51 04 W69 52 29 at A/D	
CAUTION	<p>Rwy edge lgt installed higher than std (aprx 27 inches high loc 5' outside rwy edge). Terrain: High terrain all quads. Apch/Dep: Steeper than normal apch/dep. Obstacles: Obstacles E of rwy include bldgs, P-lines & antenna. 3 obstacle lghts on final rwy 17. Graded areas: Graded areas around rwy are extremely ltd or non-existent. Traffic: Tfc crossing thld rwy 17. Night ops: Only pilot with considerable experience with lcl terrain should use this aprt dur hrs of darkness due to sur terrain.</p>	

KINCARDINE ON

CNS7

REF	N44 12 05 W81 36 24 1.5NNE 9°W UTC-5(4) Elev 772' A5000 F-21 LO4 LO6 CAP	
OPR	Municipality of Kincardine 519-396-4454 Reg	
PF	B-1 C-2,3,4,5,6	
FLT PLN	NOTAM FILE CYVV	
FIC	London 866-WXBRIEF (Toll free within Canada) or 866-541-4104 (Toll free within Canada & USA)	
SERVICES		
FUEL	80, 100LL, JA-1, FSII	
OIL	All	
RWY DATA	Rwy 13/31 4085x75 asphalt Rwy 05/23 2087x50 asphalt	
RCR	Opr 13-22Z±	
LIGHTING	13-(TE ME) AP, 31-(TE ME) AP, 05-(TE ME), 23-(TE ME) ARCAL-122.8 type K	

CANADA FLIGHT SUPPLEMENT / GPH 205

Effective 0901Z 20 November 2008 to 0901Z 15 January 2009

AERODROME/FACILITY DIRECTORY B459

KINCARDINE ON (Cont'd)

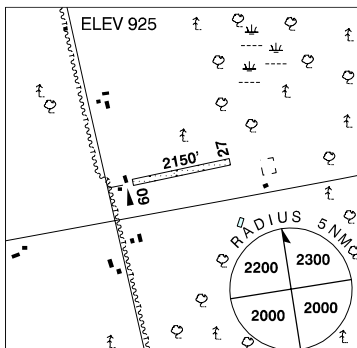
CNS7

COMM	
ATF	UNICOM (AU) ltd hrs O/T tfc 122.8 5NM 3800 ASL
NAV	
NDB	D7 350 (L) N44 12 12 W81 36 12 at A/D Pvt
PRO	Rgt hand circuits rwy 31 (CAR 602.96).

KINCARDINE (ELLIS FIELD) ON

CNK2

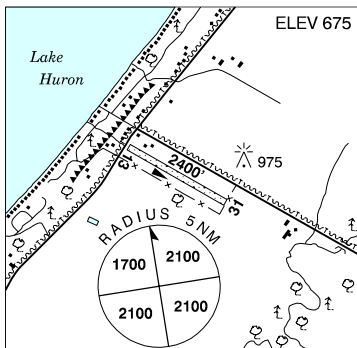
REF	N44 09 22 W81 24 02 10E 9°W UTC-5(4) Elev 925' A5000 F-21
OPR	B. Ellis 519-396-3200 Reg Ltd hrs PPR
PF	D-1,2,3,4,5,6
FLT PLN	NOTAM FILE CYVV
FIC	London 866-WXBRIEF (Toll free within Canada) or 866-541-4104 (Toll free within Canada & USA)
SERVICES	
S	5
RWY DATA	Rwy 09/27 2150x80 turf
RCR	Opr Rwy soft when wet. No win maint.
COMM	
ATF	tfc 122.8 5NM 3900 ASL
CAUTION	P-line aprx 35 AGL, aprx 550' fr thld 09. Two twrs painted & lgtd 1298 ASL (360 AGL) 6NM E of aprt & 1200 ASL (350 AGL) 4NM N of aprt.



KINCARDINE / SHEPHERD'S LANDING ON

CKS9

REF	N44 07 03 W81 41 54 4.5SW 9°W UTC-5(4) Elev 675' A5000 F-21
OPR	G. Shepherd 519-395-0939 Reg PPR Ltd hrs
PF	C-1,2,3,4,5,6
FLT PLN	NOTAM FILE CYVV
FIC	London 866-WXBRIEF (Toll free within Canada) or 866-541-4104 (Toll free within Canada & USA)
SERVICES	
S	4,5,6
RWY DATA	Rwy 13/31 2400x70 turf
RCR	Opr Ltd win maint, soft in spring & fall.
COMM	
ATF	tfc 122.8 5NM 3700 ASL
CAUTION	Marked P-line aprx 35 AGL aprx 70' fr thld 13. Painted & lighted twr 300 AGL 800' N of thld 31. Painted & lighted twr 300 AGL 1.2NM NE of aprt. Lakeshore noise sensitive dur sum months.



CANADA FLIGHT SUPPLEMENT / GPH 205

Effective 0901Z 20 November 2008 to 0901Z 15 January 2009

B460 AERODROME/FACILITY DIRECTORY

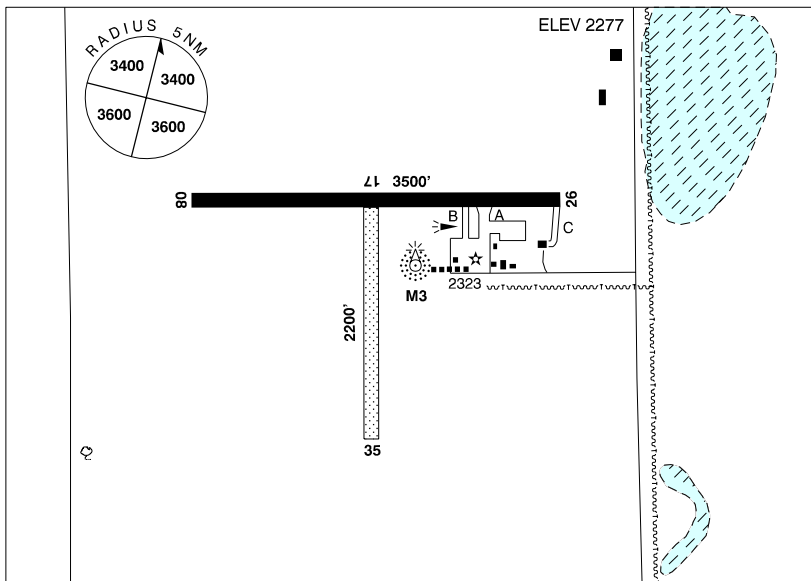
KINCARDINE (SOUTH BRUCE GREY HEALTH CENTRE) ON (Heli)

CPUZ

REF	N44 11 15 W81 37 28 Adj 9°W UTC-5(4) Elev 700' A5000	
OPR	Kincardine South Bruce Grey Health Centre 519-396-3331 Cert PPR	
FLT PLN	NOTAM FILE CYVV	
FIG	London 866-WXBRIEF (Toll free within Canada) or 866-541-4104 (Toll free within Canada & USA)	
PAD DATA	86' x 86' 114' x 114' Rstd max heli length 57.5'	
LIGHTING	RY(LO) RF(FL)	
COMM		
ATF	Kincardine UNICOM ltd hrs O/T t/c 122.8	
A/G	5NM of Kincardine A/D 3800 ASL ambulance dispatch 129.275	
PRO	Arr/dep ft path arc brg 097°-160° fr heli. Kincardine aprt 1NM NE.	

KINDERSLEY SK

CYKY



REF	N51 30 55 W109 10 50 2.5N 14°E UTC-6 Elev 2277' A5006 E-16 LO2 CAP
OPR	Town 306-463-2675 Cert
PF	B-1 C-2,3,4,5,6
FLT PLN	NOTAM FILE CYYN
FIG	Edmonton 866-WXBRIEF (Toll free within Canada) or 866-541-4102 (Toll free within Canada & USA)
WX	METAR H24.

CANADA FLIGHT SUPPLEMENT / GPH 205

Effective 0901Z 20 November 2008 to 0901Z 15 January 2009

AERODROME/FACILITY DIRECTORY B461

KINDERSLEY SK (Cont'd)

CYKY

SERVICES	
FUEL	100LL
OIL	65, 80, 100
RWY DATA	
	Rwy 08(076°)/26(256°) 3500x75 asphalt
	Rwy 17(166°)/35(346°) 2200x100 turf
RCR	Opr No win maint rwy 17/35.
LIGHTING	
	08-(TE LO), 26-(TE LO)
COMM	
ATF	UNICOM ltd hrs O/T tfc 122.8 5NM 5300 ASL
NAV	
NDB	M3 402 (M) N51 31 01 W109 10 40 at A/D Pvt Unmonitored
CAUTION	
	Lgtd twr 2575 ASL (351 AGL) 2.4NM S of A/D.

KINGFISHER LAKE ON

CNM5

REF	N53 00 45 W89 51 19 1.5SW 4°W UTC-6(5) Elev 866' A5017 E-17 LO3 CAP	
OPR	Govt of Ontario 807-473-2082 Cert	
PF	C-1,4	
FLT PLN	NOTAM FILE CYXL	
FIC	Winnipeg 866-WXBRIEF (Toll free within Canada) or 866-541-4103 (Toll free within Canada & USA)	
RWY DATA		
	Rwy 12(117°)/30(297°) 3520x100 gravel/clay	
RCR	Opr or APM 807-532-2009 14-23Z† Mon-Fri exc hols. Rwy strength & cond subject to seasonal &/or climatic var.	
LIGHTING		
	12-(TE LO) AP, 30-(TE LO) AP ARCAL-123.2 type K for APAPI, rwy lgts low ints only.	
COMM		
ATF	tfc 123.2 5NM 3900 ASL	

KING GEORGE AIRPARK BC — See SURREY / KING GEORGE AIRPARK

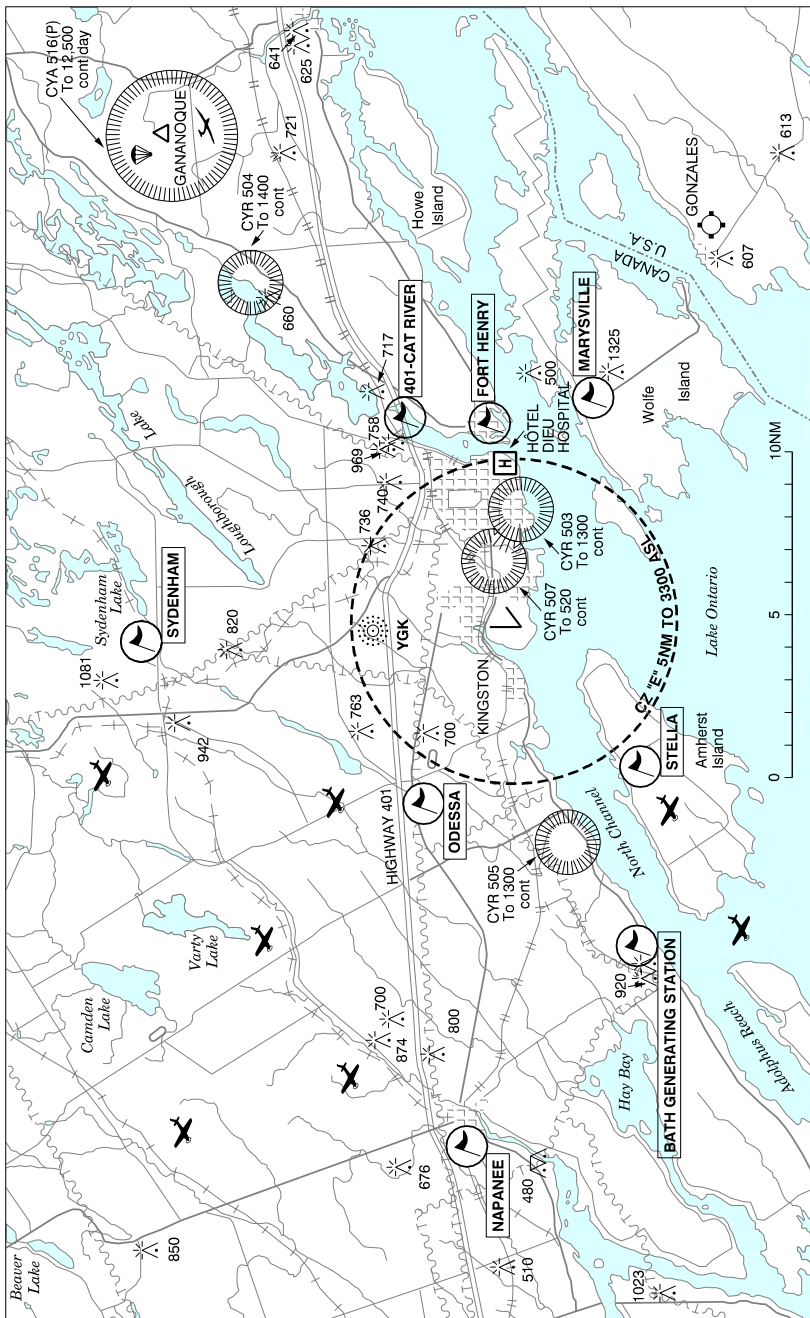
KINGS CO MUNI NS — See WATERVILLE / KINGS CO MUNI

CANADA FLIGHT SUPPLEMENT / GPH 205

Effective 0901Z 20 November 2008 to 0901Z 15 January 2009

B462 AERODROME/FACILITY DIRECTORY

KINGSTON VFR TERMINAL PROCEDURES CHART



CANADA FLIGHT SUPPLEMENT / GPH 205

Effective 0901Z 20 November 2008 to 0901Z 15 January 2009

AERODROME/FACILITY DIRECTORY B463

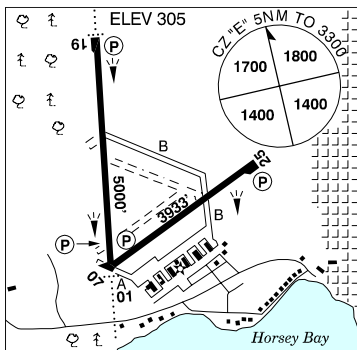
KINGSTON VFR TERMINAL PROCEDURES CHART (Cont'd)

LOCATION	IDENT	LAT/LONG
401-CAT RIVER	VCATR	N44° 16.75 W76° 27.00
BATH GENERATING STATION	VCBTH	N44° 08.50 W76° 50.75
FORT HENRY	VCFHN	N44° 14.00 W76° 27.50
MARYSVILLE	VCMRV	N44° 11.50 W76° 26.50
NAPANEE	VCNAP	N44° 15.00 W76° 57.20
ODESSA	VCODS	N44° 16.75 W76° 43.00
SYDENHAM	VCSDN	N44° 24.50 W76° 35.75
STELLA	VCSTL	N44° 10.20 W76° 42.00

KINGSTON ON

CYGK

REF	N44 13 31 W76 35 49 4.3W 13°W UTC-5(4) Elev 305' A5000 F-21 LO6 LO7 HI5 CAP
OPR	City 613-389-6404 Cert Ltd hrs
PF	B-1,2 C-3,4,5,6
CUST	AOE/30 888-226-7277 14-21Z† Mon-Fri exc hols
FLT PLN	NOTAM FILE CYGK
FIC	London 866-WXBRIEF (Toll free within Canada) or 866-541-4104 (Toll free within Canada & USA)
WX	METAR 11-04Z†. TAF 13-04Z†; issue times: 13, 20, 02Z (DT 12, 14, 20Z).
PIK	Central Airways Corp, gnd floor in Pilot Lounge, avbl dur hrs of ops (0500-0030 lcl) & via on call fueler at other times, airside access.



SERVICES	All svcs avbl 11-02Z† Mon-Fri, 13-02Z† Sat & Sun, O/T call out chg 613-389-9300
FUEL	100LL, JA-1
OIL	65, 80, 100, 120
S	1,2,3,4,5
SUP FL	D-Ice
JASU	CE 15
PVT ADV	Central Airways 123.35 11-02Z† Mon-Fri, 13-02Z† Sat-Sun; Kingston Flying Club 122.8 ltd hrs
RWY DATA	Rwy 01(009°)/19(189°) 5000x100 asphalt Rwy 07(066°)/25(246°) 3933x100 asphalt Prkg area E of main apron rstd to acft less than 12,500 GTOW.
APRON	FSS CRFI/RSC Ltd win maint hrs Mon-Fri exc hols O/T 3 hrs PNR. Fees will be levied. PLR
RCR	
LIGHTING	01-AD AS(TE HI) P2, 19-AD AS(TE HI) P2, 07-(TE ME) AP, 25-(TE ME) AP ARCAL-122.5 type K.
COMM	
RADIO	122.5 238.3 (E) 1115-04Z† (emerg only 613-389-7558)
RCO	London rdo 126.7 (FISE)
MF	rdo 122.5 1115-04Z† 5NM 3300 ASL (CAR 602.98)
ATF	tfc 122.5 04-1115Z† 5NM 3300 ASL
VDF	122.5 1115-04Z†
NAV	
NDB	YGK 263 (M) N44 17 48 W76 36 20 192° 3.8NM to A/D Unmonitored when FSS clsd.
ILS	IGK 111.3 (Rwy 19-01) Unmonitored when FSS clsd.

CANADA FLIGHT SUPPLEMENT / GPH 205

Effective 0901Z 20 November 2008 to 0901Z 15 January 2009

B464 AERODROME/FACILITY DIRECTORY

KINGSTON ON (Cont'd)

CYJK

PRO	Due to rwy slope on 01/19 acft on rwy ends may not be vis to pilots at opposite ends of rwy. VFR tfc outside CZ watch for IFR practice apch acft oprg in vic of rwy 01/19 extended ctr lines.
CAUTION	Crane 106 AGL (355 ASL) 0.5NM N thld rwy 19 cont days Apr-Dec. Wildlife frequently on rwys.

KINGSTON (HÔTEL DIEU HOSP) ON (Heli)

CPJ7

REF	N44 13 20 W76 29 34 Adj 13°W UTC-5(4) Elev 261' A5000
OPR	Hôtel Dieu Hosp 613-544-3310 Cert PPR
FLT PLN FIC	NOTAM FILE CYGK London 866-WXBRIEF (Toll free within Canada) or 866-541-4104 (Toll free within Canada & USA)
PAD DATA RCR	85' dia asphalt 114' dia Rstd max heli length 57.5' Opr
LIGHTING	FL ARCAL-123.2 type J
COMM RADIO RCO MF/ATF	122.5 238.3 (E) 1115-04Z‡ at Kingston A/D 4.5NM W London rdo 126.7 (FISE) rdo 122.5 1115-04Z‡ O/T tfc 5NM centred on Kingston land A/D 4.5NM W 3300 ASL (CAR 602.98)
PRO	Tkof/apch 160°-220° fr heli. Refer to Kingston VTPC.



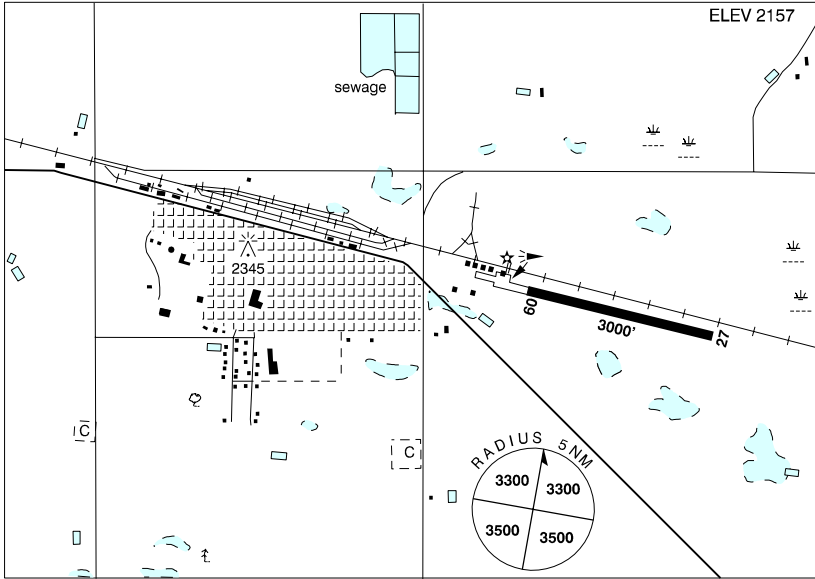
CANADA FLIGHT SUPPLEMENT / GPH 205

Effective 0901Z 20 November 2008 to 0901Z 15 January 2009

AERODROME/FACILITY DIRECTORY B465

KIPLING SK

CKD5



REF	N50 05 57 W102 36 24 10°E UTC-6 Elev 2157' A5006 E-16 LO2
OPR	Town 306-736-2515 Reg
PF	C-1,2,4,5
FLT PLN	NOTAM FILE CYQV
FIC	Edmonton 866-WXBRIEF (Toll free within Canada) or 866-541-4102 (Toll free within Canada & USA)
RWY DATA	Rwy 09(094°)/27(274°) 3000x75 asphalt
RCR	Opr Ocsl delay in snow removal.
LIGHTING	09-(TE LO), 27-(TE LO) ARCAL-123.2 type J
COMM	
ATF	tfc 123.2 5NM 5200 ASL

CANADA FLIGHT SUPPLEMENT / GPH 205

Effective 0901Z 20 November 2008 to 0901Z 15 January 2009

B466 AERODROME/FACILITY DIRECTORY

KIRBY LAKE AB

CRL4

REF	N55 21 20 W110 38 15 16°E UTC-7(6) Elev 2260' A5015 E-16 RCAP LO1	
OPR	BP Canada 780-559-2236/8453 Reg PPR	
FLT PLN	NOTAM FILE CYEG	
FIC	Edmonton 866-WXBRIEF (Toll free within Canada) or 866-541-4102 (Toll free within Canada & USA)	
ACC	Edmonton IFR 888-358-7526 or 780-890-8304/8305	
RWY DATA	Rwy 08(081°)/26(261°) 4920x100 asphalt Rwy 26 up 1.4%	
RCR	Opr	
LIGHTING	08-(TE LO), 26-(TE LO) on cont	
COMM		
ATF	UNICOM (AU) 122.8 5NM 5300 ASL	
CAUTION	Tower 140 AGL 2355 ASL 250' south of thld 26. Tower 270 AGL 2485 ASL 400' SW thld 26. CYR 204 1.5NM south A/D sfc to unlt'd, CYR 221 overlays A/D 7000' to unlt'd. No circling south of rwy.	

KIRKLAND LAKE ON

CYKX

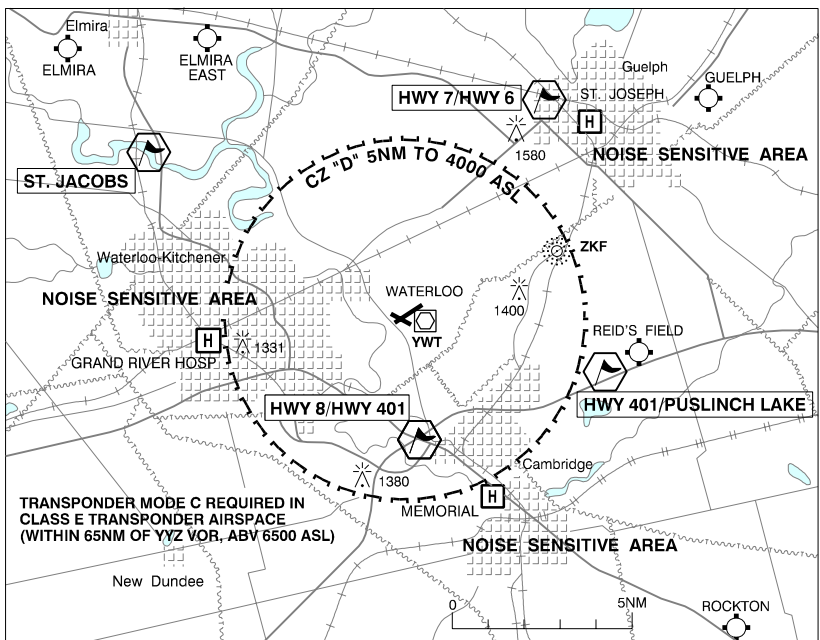
REF	N48 12 37 W79 58 53 6.3NE 12°W UTC-5(4) Elev 1157' A5009 E-18 F-21 LO4 LO7 CAP	
OPR	Town 705-567-6010 Cert	
PF	B-1 C-2,3,4,5,6	
FLT PLN	NOTAM FILE CYXR	
FIC	London 866-WXBRIEF (Toll free within Canada) or 866-541-4104 (Toll free within Canada & USA)	
SERVICES	May 1-Oct 31 Mon-Sun ltd hrs. Unattended hols & wknds. Nov 1-Apr 30 unattended hol. O/T 705-567-3400. Call out chg may be levied for one or more svcs.	
FUEL	100LL, JA-1	
RWY DATA	Rwy 08(082°)/26(262°) 4500x100 asphalt Rwy 08 down 0.47%	
RCR	Opr PNR snow removal outside hrs of ops.	
LIGHTING	08-AS(TE ME) P2, 26-AS(TE ME) P2 ARCAL-122.8 type K	
COMM		
ATF	UNICOM ltd hrs O/T t/c 122.8 5NM 4200 ASL	
NAV		
NDB	YKX 201 N48 13 37 W79 52 11 270° 4.2NM to A/D	
CAUTION	Large animals in vic of rwy. Gravel areas next to apron will not support wheeled act greater than 2000 Kg. Rwy shoulders within 50' of edge soft Apr-June.	

CANADA FLIGHT SUPPLEMENT / GPH 205

Effective 0901Z 20 November 2008 to 0901Z 15 January 2009

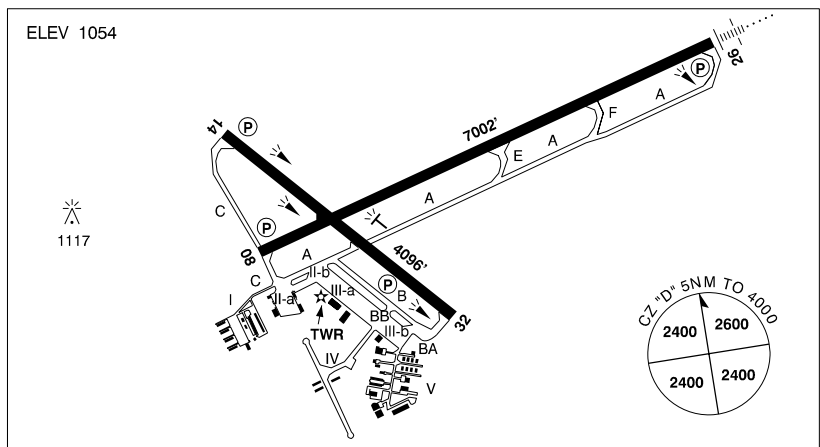
AERODROME/FACILITY DIRECTORY B467

KITCHENER / WATERLOO VFR TERMINAL PROCEDURES CHART



KITCHENER / WATERLOO ON

CYKF



REF	N43 27 32 W80 22 39 1E 10°W UTC-5(4) Elev 1054' VTA A5000 F-21 LO6 HI5 CAP
OPR	Regional Muni of Waterloo 519-648-2256 Cert High ldg fee structure 04-1130Z± daily for all chapter 2 equivalent acft below 34,000 Kg. Ctc opr. Ldg fees are applied to itinerant acft above 1000 Kg GTOW.
PF	A-1,2 B-2,6 avbl 13-20Z C-3,4,5

CANADA FLIGHT SUPPLEMENT / GPH 205

Effective 0901Z 20 November 2008 to 0901Z 15 January 2009

B468 AERODROME/FACILITY DIRECTORY

KITCHENER / WATERLOO ON (Cont'd)

CYKF

CUST	AOE/15 888-226-7277 AOE/180 12-04Z‡ 519-648-3868/519-465-7723 2hrs PNR
FLT PLN	NOTAM FILE CYKF
FIC	London 866-WXBRIEF (Toll free within Canada) or 866-541-4104 (Toll free within Canada & USA)
WX	Legacy AWOS. TAF 11-05Z‡, issue times: 11, 14, 20, 02Z (DT 10, 14, 20, 02Z).
SERVICES	
FUEL	100, JA-1
OIL	80, 100
S	1,2,3
PVT ADV	Flite Line svc 130.5 519-648-3404 1030-0330Z‡ Mon-Fri, 11-03Z‡ Sat-Sun O/T call out chg. Flightexec Jet Centers (Esso) 123.55 519-220-5481 Mon-Fri 1030-0200Z‡, Sat-Sun 1200-0130Z‡ O/T call out chg.
RWY DATA	Rwy 14(138°)/32(318°) 4096x150 asphalt Rwy 08(075°)/26(255°) 7002x150 asphalt Rwy 26 down 0.43%, first 1800' down 0.79%
APRON	Apron 1 rstd to acft max Wingspan 50'. Apron 2A rstd to acft max Wingspan 55'. Turbine acft PPR. Apron 2B rstd to acft max Wingspan 79' Apron 3A tml apron rstd to acft max wingspan 118', Larger acft PPR Apron 3B GA freight rstd to acft max wingspan 118', Larger acft PPR Apron 4 rstd to acft max Wingspan 118'. Apron 5 rstd to acft max Wingspan 79'.
RCR	Opr 519-648-2256 RCR/CRFI avbl 10-05Z‡. No win maint 05-10Z‡. O/T call out chg 3 hrs PNR.
LIGHTING	08-(TE HI) P2, 14-(TE ME) P1, 26-AN(TE HI) P2, 32-(TE ME) P1 ARCAL-126.0 type K when twr clsd. PAPI not avbl on ARCAL, on continuously: low ints at SS minus 30 min to SR minus 30 min, high ints at SR minus 30 min to SS minus 30 min.
COMM	
ATIS	125.1 12-04Z‡
GND	Waterloo 121.8 12-04Z‡
TWR	Waterloo 126.0 118.55 (V) 12-04Z‡ (emerg only 519-648-3055)
MF	tfc 126.0 04-12Z‡ 5NM 4000 ASL (CAR 602.98)
ARR	Toronto Tml 128.275 268.75
DEP	Toronto Tml 128.275 268.75
PAL	Toronto Ctr 128.275 268.75
NAV	
NDB	WELLINGTON ZKF 335 (L) N43 29 35 W80 17 13 255° 4.1NM to A/D
VOR/DME	WATERLOO YWT 115.0 Ch 97 N43 27 31 W80 22 46 (1068') at A/D
ILS	IKF 110.7 (Rwy 26-08) LOC(BC) reliable only within 30° either side of centreline.
PRO	Noise Abatement pro in effect for all acft. See CAP or VTPC. Pilots flying an inst apch pro to rwy 26 take note: The pro turn overflies Guelph Aprt (circuit hgt 2100 ASL). Pilots flying an inst apch pro to rwy 26 can anticipate delays and/or restrictions when rwys 05 & 06R are in use at Toronto/Lester B. Pearson. IFR tng flts are to ctc Toronto flow ctr 800-268-4831 2 hrs prior to ETD or possible delays. VFR tfc outside CZ watch for apch acft oprg in vic of extended rwy 26 centreline. VFR deps rwy 26 turn left to hdg 190° or right to hdg 320°, at an operationally safe altitude. All MEDEVAC/patient transfers rstd to apron II-B.
CAUTION	Wildlife occasionally on rwys. Bldg 103' fr thld 08, 610' S of extended centerline rwy 08, 20 AGL. Marked with anticollision lgt.

CANADA FLIGHT SUPPLEMENT / GPH 205

Effective 0901Z 20 November 2008 to 0901Z 15 January 2009

AERODROME/FACILITY DIRECTORY B469

KITCHENER-WATERLOO (GRAND RIVER HOSP) ON (Heli)

CNK9

REF	N43 27 10 W80 30 13 Adj NW 10°W UTC-5(4) Elev 1110' VTA A5000	
OPR	Kitchener-Waterloo Hosp 519-742-3611 Cert PPR	
FLT PLN FIC	NOTAM FILE CYKF London 866-WXBRIEF (Toll free within Canada) or 866-541-4104 (Toll free within Canada & USA)	
PAD DATA RCR	86' dia concrete/asphalt 114' dia Touchdown pad 30' x 30' concrete Rstd max heli length 57.5' Opr	
LIGHTING	DR RY(LO) perimeter lghts green RF(FL)	
COMM TWR MF	Waterloo 126.0 118.55 (V) 12-04Z† (emerg only 519-648-3055) tfc 126.0 04-12Z† 5 NM 4000 ASL (CAR 602.98) (centred on Kitchener/ Waterloo CYKF A/D 5 NM W)	
PRO	Arr/dep 161° fr heli.	
CAUTION	Touchdown pad is the only weight-bearing sfc.	

KITIMAT BC

CBW2

REF	N54 09 50 W128 34 51 7N 22°E UTC-8(7) Elev 250' aprx A5013 E-15	
OPR	Kitimat Flying Club 250-632-2793 Reg	
PF	B-1 D-2,3,4,5,6	
FLT PLN FIC	NOTAM FILE CYXT Kamloops 866-WXBRIEF (Toll free within Canada) or 866-541-4101 (Toll free within Canada & USA)	
RWY DATA RCR	Rwy 17/35 3000x75 oiled gravel Opr No win maint	
COMM ATF	tfc 122.8 5NM 3300 ASL	
NAV NDB	ZKI 203 (M) N54 03 15 W128 40 13 004° 7.3NM to A/D	
PRO	Rgt hand circuits rwy 17 (CAR 602.96).	
CAUTION	Radio-controlled model acft flown in vic of A/D.	

CANADA FLIGHT SUPPLEMENT / GPH 205

Effective 0901Z 20 November 2008 to 0901Z 15 January 2009

B470 AERODROME/FACILITY DIRECTORY

KNEE LAKE MB

CJT3

REF	N54 54 55 W94 47 53 1N 1°E UTC-6(5) Elev 625' aprx A5016 A5017 E-17	
OPR	Knee Lake Resort 204-940-6300 or SATCOM 204-888-0498 Reg PNR	
PF	C-1,2,5 PNR Opr	
FLT PLN FIG	NOTAM FILE CYIV Winnipeg 866-WXBRIEF (Toll free within Canada) or 866-541-4103 (Toll free within Canada & USA)	
SERVICES FUEL	100LL, JA (avbl at resort) PNR opr	
RWY DATA RCR	Rwy 03(034°)/21(214°) 3950x110 crushed rock Rwy 03 slopes up. Ctc opr PNR Opr May 15-Sep 15 No win maint.	
COMM ATF	UNICOM ltd hrs May 15-Sep 15 O/T ftc 122.8 5NM 3700 ASL	
NAV NDB	4J 314 (L) N54 53 00 W94 48 00 001° 1.9NM to A/D Pvt Unmonitored	

KUGAARUK NU

CYBB

REF	N68 32 04 W89 48 29 21°W GV69°E UTC-7(6) Elev 56' A5043 C-11 LO5 HI1 HI2 CAP	
OPR	Govt of Nunavut 867-983-4184/4014 Cert	
PF	C-1,2,4,5	
FLT PLN FIG CARS WX	NOTAM FILE CYBB North Bay 866-WXBRIEF (Toll free within Canada) or 866-541-4109 (Toll free within Canada & USA) 867-769-6567 ltd hrs (see COMM) Lcl wx only other wx O/R. METAR dur CARS hrs (see COMM). TAF 15-24Z† Mon-Fri, issue times: 15, 19Z (DT 14, 19Z) TAF 18-01Z† Sat, issue times: 18Z† TAF 20-24Z† Sun, issue times: 20Z† exc hols.	
SERVICES FUEL	Call out chg may be levied. DFA Emerg & MEDEVAC only, O/T subject to seasonal availability. PNR ctc 867-769-6209/6017 or 867-983-4135. Credit cards not accepted. Credit by prior arrg only, ctc 867-645-5169, allow 7 working days.	
RWY DATA RCR	Rwy 05T(049°T)/23T(229°T) 5000x100 gravel Rwy 23T up 0.62% Hamlet mgr 867-769-6281 A/D maint avbl 15-24Z† Mon-Fri exc hols O/T PNR & call out chg rqrd. PLR/PCN	
LIGHTING	05T-AS(TE ME) P1, 23T-AS(TE ME) P1 ARCAL-122.1 type K (See CAUTION)	
COMM MF APRT RDO	aprt rdo ltd hrs O/T ftc 122.1 5NM 3100 ASL (CAR 602.98) 122.1 (V) 13-24Z† Mon-Fri, 16-01Z† Sat, 18-24Z† Sun, exc federal observed hols.	

CANADA FLIGHT SUPPLEMENT / GPH 205

Effective 0901Z 20 November 2008 to 0901Z 15 January 2009

AERODROME/FACILITY DIRECTORY B471

KUGAARUK NU (Cont'd)

CYBB

NAV	NDB PELLY BAY (TOWN SITE) YBB 263 (M) N68 32 06 W89 47 16 at A/D Unmonitored
CAUTION	Rwy edge lgt installed higher than std (aprx 27 inches high loc 5' outside rwy edge).

KUGLUKTUK NU

CYCO

REF	N67 49 00 W115 08 38 27°E GV142°E UTC-7(6) Elev 74' A5035 C-10 LO5 HI2 CAP	
OPR	Govt of Nunavut 867-983-4184/4014 Cert	
PF	A-1 C-2,3,4,5	
FLT PLN	NOTAM FILE CYCO	
FIG	North Bay 866-WXBRIEF (Toll free within Canada) or 866-541-4109 (Toll free within Canada & USA)	
CARS	867-982-4131	
WX	METAR H24. TAF H24, issue times: 01, 07, 13, 19Z.	
SERVICES	For svc, call 867-982-3400/4231 or 867-983-7259/7285. Call out chg may be levied for one or more svcs outside normal oprg hrs.	
FUEL	100LL(D), JA-1 1430-24Z† Mon-Sat exc hols. PNR 867-982-3400/4231/4131. Credit cards not accepted. Credit by prior arng only, ctc 867-645-5169.	
RWY DATA RCR	Rwy 12T(121°T)/30T(301°T) 5500x100 gravel Rwy 12T up 0.55% 867-982-4471 12-21Z (DT 13-22Z) Mon-Fri exc hols O/T PNR & call out chg. CRFI, PLR/PCN	
LIGHTING	12T-AO(TE ME) P2, 30T-AO(non-std 430°) (TE ME) P2 ARCAL-122.1 type K avbl if CARS stn clsd. (See CAUTION).	
COMM	MF APRT RDO aprt rdo 122.1 5NM 3100 ASL (CAR 602.98) 122.1 (V)	
NAV	NDB COPPERMINE YCO 372 (M) N67 49 16 W115 05 53 255°T 1.0NM to A/D	
CAUTION	Rwy edge lgt installed higher than std (aprx 27 inches high loc 5' outside rwy edge).	

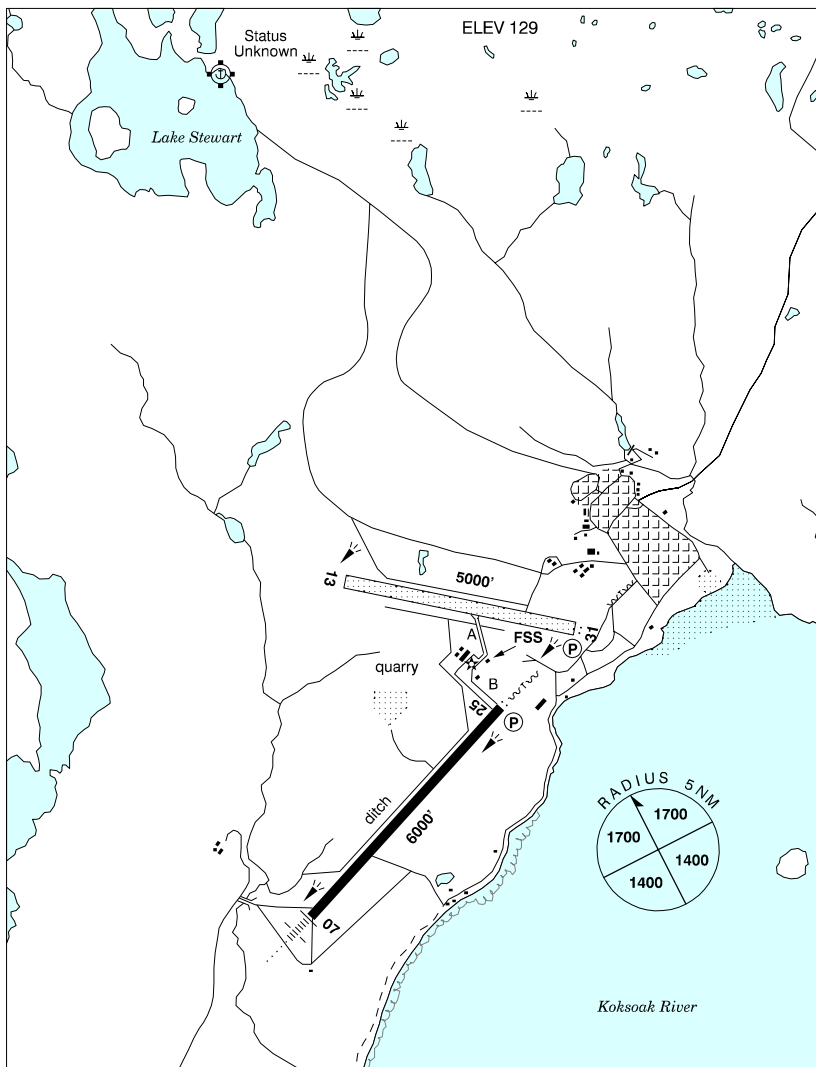
CANADA FLIGHT SUPPLEMENT / GPH 205

Effective 0901Z 20 November 2008 to 0901Z 15 January 2009

B472 AERODROME/FACILITY DIRECTORY

KUUJJUAQ QC

CYVP



REF	N58 05 46 W68 25 37 1.5SW 27°W UTC-5(4) Elev 129' A5027 D-15 LO5 H11 CAP
OPR	Administration Régionale Kativik 819-964-2968 14-22Z† Mon-Fri O/T 819-964-3434 Ext 154 Fax 819-964-2462 Cert
PF	A-1 C-2,3,4,5

CANADA FLIGHT SUPPLEMENT / GPH 205

Effective 0901Z 20 November 2008 to 0901Z 15 January 2009

AERODROME/FACILITY DIRECTORY B473

KUUJJUAQ QC (Cont'd)

CYVP

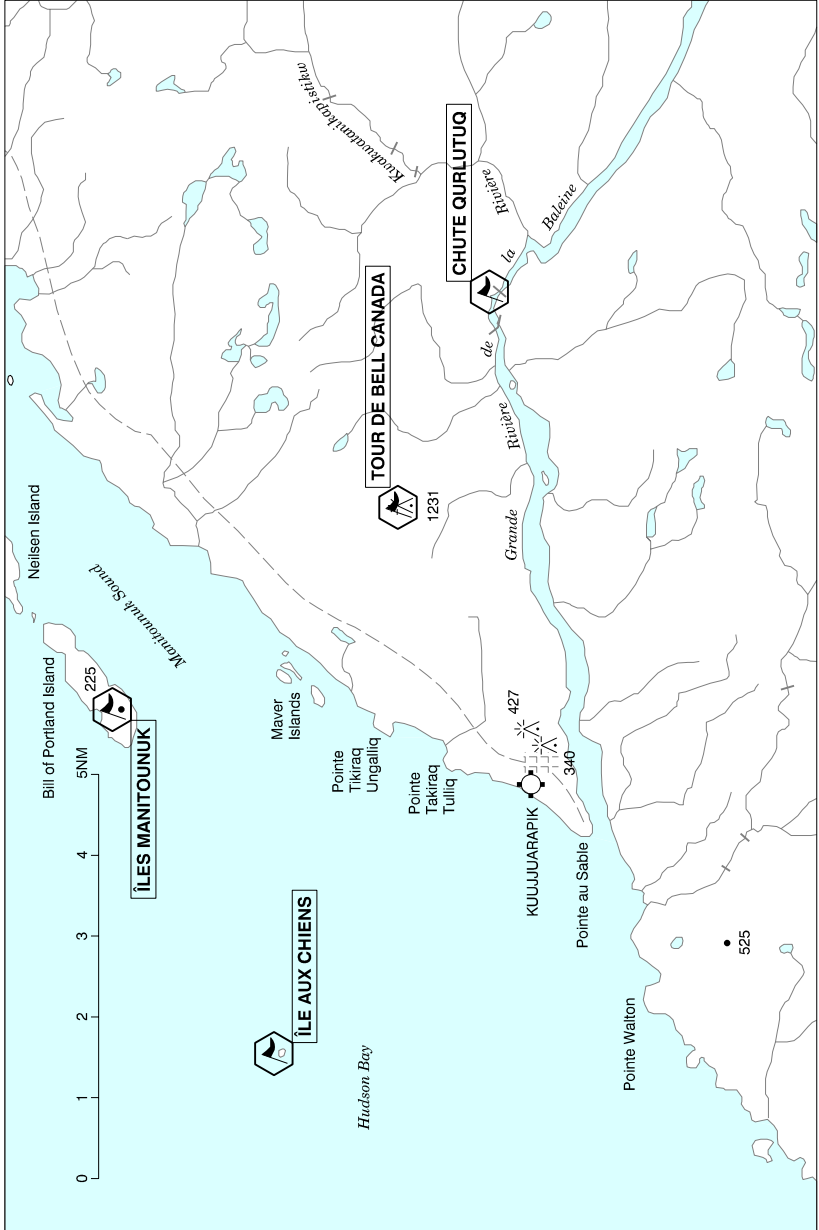
FLT PLN	(bil) NOTAM FILE CYVP
FIC	Québec 866-GOMÉTÉO or 866-WXBRIEF (Toll free within Canada) or 866-541-4105 (Toll free within Canada & USA)
ACC	Montréal 800-633-1353
WX	METAR H24. TAF H24, issue times: 00, 06, 12, 18Z.
SERVICES	Halutik Fuel Inc 819-964-3434 Ext 239 1330-22Z‡ Mon-Fri O/T Call out chg may be levied for one or more svcs
FUEL	100LL, JA-1, JB(D) Visa and Master Card and American Express accepted. Credit by prior arrng only, ctc 800-661-1771 ext 3789, allow 7 working days.
OIL	15W50
S	2
RWY DATA	Rwy 07(069°)/25(249°) 6000x150 asphalt Rwy 13(129°)/31(309°) 5000x150 gravel Rwy 13 down 1.4%, rwy 25 down 0.5%
RCR	Opr CRFI, Win maint 13-2130Z‡ Mon-Fri, O/T 3 hrs PNR. PLR/PCN
LIGHTING	07-AN(TE HI), 13-(TE ME), 25-AS(TE HI) P2, 31-AS(TE ME) P2 O/R thru FSS.
COMM	(bil)
RADIO	122.2 296.6 (E) (emerg only 819-964-2841)
RCO	Québec rdo 123.55 (FISE) 126.7 (FISE) 5680
MF	rdo 122.2 5NM 3200 ASL (CAR 602.98)
PAL	Montréal Ctr 135.1
NAV	
VOT	111.8
NDB	KUJACK VP 390 (M) N58 03 22 W68 29 11 069° 2.3NM to thld rwy 07
VOR/DME	KUJACK YVP 112.5 Ch 72 N58 05 46 W68 25 38 (150') at A/D
ILS	IVP 110.3 (Rwy 07-25) RVR
CAUTION	Runway: Poor drainage rwy 07/25. Wildlife: Possible presence of large animals within aprt perimeter. Seaplane: Seaplane activities Stewart Lake (2.5NM N of aprt). Radiosonde: Daily radiosonde balloon launches with an ascent rate of 1000 ft/min between the hrs of 1115-1345Z and 2315-0145Z.

CANADA FLIGHT SUPPLEMENT / GPH 205

Effective 0901Z 20 November 2008 to 0901Z 15 January 2009

B474 AERODROME/FACILITY DIRECTORY

KUUJUUARAPIK VFR TERMINAL PROCEDURES CHART



CANADA FLIGHT SUPPLEMENT / GPH 205

Effective 0901Z 20 November 2008 to 0901Z 15 January 2009

AERODROME/FACILITY DIRECTORY B475

KUUJJUARAPIK VFR TERMINAL PROCEDURES CHART (Cont'd)

LOCATION	IDENT	LAT/LONG
CHUTE QURLUTUQ	VCHTT	N55° 17.18 W77° 35.23
ÎLE AUX CHIENS	VCBRK	N55° 20.27 W77° 51.13
ÎLES MANITOUNUK	VCNUK	N55° 21.82 W77° 44.18
TOUR DE BELL CANADA	VCBCE	N55° 18.37 W77° 39.95

KUUJJUARAPIK QC

CYGW

REF	N55 16 55 W77 45 55 Adj 18°W UTC-5(4) Elev 34' A5018 E-18 LO5 H11 CAP	
OPR	Administration Régionale Kativik 819-964-2968 14-22Z† Mon-Fri O/T 819-964-3434 Ext 154 Fax 819-964-2462 Cert	
PF	A-1 C-2,4,5 819-929-3354	
FLT PLN	(bil) NOTAM FILE CYGW	
FIC	Québec 866-GOMÉTÉO or 866-WXBRIEF (Toll free within Canada) or 866-541-4105 (Toll free within Canada & USA)	
ACC	Montréal 800-633-1353	
WX	LWIS (See COMM) METAR H24. TAF H24, issue times: 00, 06, 12, 18Z.	
SERVICES	Call out chg may be levied for one or more svcs	
FUEL	100LL(D) ltd, JA-1 PNR FCNQ Petro 819-929-3205 13-22Z† Mon-Fri O/T COOP 819-929-3266. Visa and Master Card accepted. Credit by prior arg only, ctc 800-363-7610, allow 7 working days.	
RWY DATA	Rwy 04(036°)/22(216°) 5052x150 sand/gravel Rwy 22 up 0.4% first 2960'	
RCR	Opr Win maint 13-2130Z† Mon-Fri O/T 3 hrs PNR	
LIGHTING	04-AO(TE ME) P2, 22-AO(TE ME) P2 ARCAL -122.2 type K	
COMM	(bil)	
RCO	La Grande rdo 122.2 (RAAS) Québec rdo 123.475 5680 (FISE) 126.7 (bcst)	
MF	La Grande rdo 122.2 within 5 NM to 3100 ASL (CAR 602.98)	
LWIS	124.35 (English) 125.15 (French)	
NAV		
NDB	JARPIK GW 371 (M) N55 17 05 W77 45 05 at A/D	
CAUTION	Possibility of caribou on rwy Nov-May. Possible presence of small and large animals on rwy.	

CANADA FLIGHT SUPPLEMENT / GPH 205

Effective 0901Z 20 November 2008 to 0901Z 15 January 2009

B476 AERODROME/FACILITY DIRECTORY

KYLE SK

CJB8

REF	N50 50 00 W108 04 12 0.6W 14°E UTC-6 Elev 2175' aprx A5006 E-16 LO2
OPR	Town 306-375-2525 Reg
PF	B-1 C-2,4,5
FLT PLN FIC	NOTAM FILE CYYN Edmonton 866-WXBRIEF (Toll free within Canada) or 866-541-4102 (Toll free within Canada & USA)
RWY DATA RCR	Rwy 08(077°)/26(257°) 3000x75 asphalt Rwy 08 slopes down Opr O/T 306-375-2579 Ltd win maint
LIGHTING	08-(TE LO), 26-(TE LO) ARCAL-123.2 type J
COMM ATF	tfc 123.2 5NM 5200 ASL
CAUTION	2 lgtd grain elevators apch rwy 26.

