

CANADA FLIGHT SUPPLEMENT / GPH 205

Effective 0901Z 20 November 2008 to 0901Z 15 January 2009

AERODROME/FACILITY DIRECTORY B961

VALCARTIER (W / C J.H.L.(JOE) LECOMTE) QC (Heli)

CY0Y

REF	N46 54 W71 30 8NNW 17°W UTC-5(4) Elev 550' A5002	
OPR	DND 418-844-5000 Ext 5764 CSN 666-5764 Mil PPR 48 hrs	
PF	B-1 C-2,3,4,5,6	
FLT PLN	(bil) NOTAM FILE CYQB	
MIL	418-844-5000 Ext 5286 CSN 666-5286	
WX	WD2 418-844-5644 11-2130Z± Mon-Fri	
SERVICES		
FUEL	F-34	
OIL	156, 0148, 555, H515	
MIL ADV	430 Sqn Ops-Call "zero" 40.90 FM 418-844-5000 Ext 5534 ltd hrs	
PAD DATA	150' x 150'	
LIGHTING	Pad apch 04, 7 bars, 3 lgts (HI) each side of the pad, 1 row, 7 amber lgts. ARCAL-126.2 type K	
COMM		
MF	45.8 FM 126.2 307.6 (E) Valcartier advsy opr ltd hrs Mon-Fri O/T Rng Ctl 49.9 FM	
VDF	121.5R 126.2R	
PRO	Trans acct arr S & SW maintain 2000 AGL until established over Base area & select SIF to stand by below 1500 AGL. Heli within rstd area CYR612 & adj to CYR603. If 430 Sqn ops/MFAU clsd, call Rng Ctl 49.9 FM.	

VALCOURT QC

CSQ3

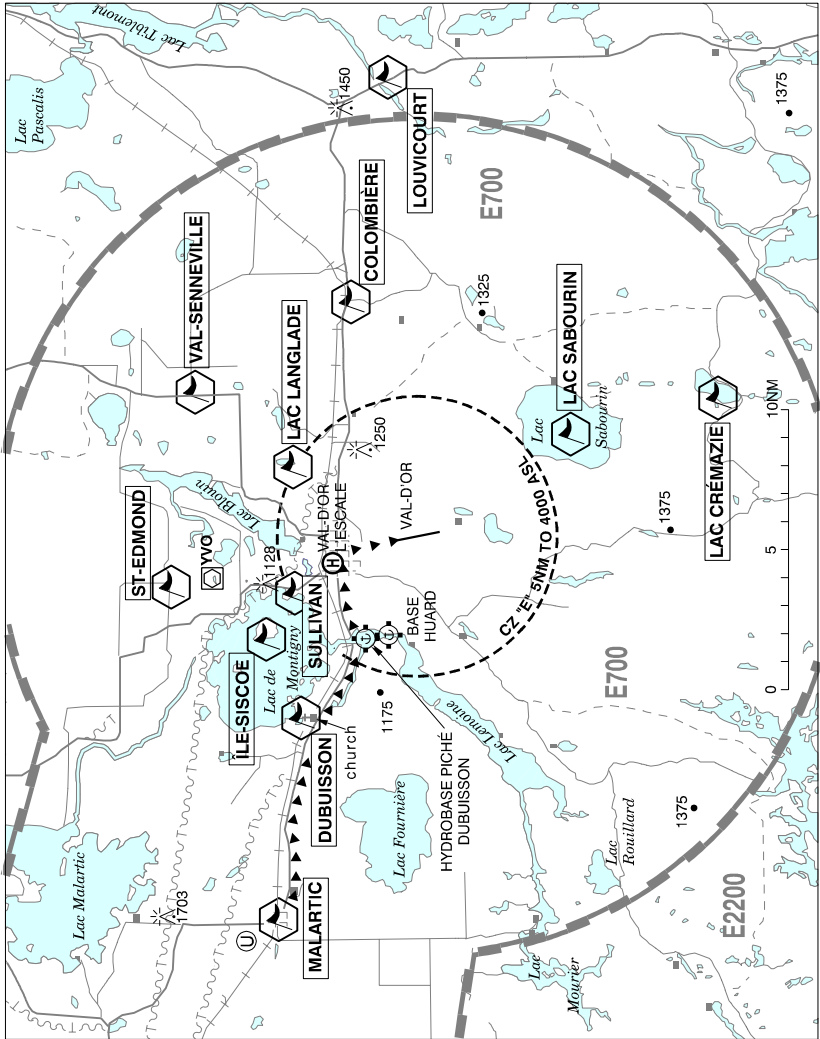
REF	N45 28 52 W72 18 37 1S 16°W UTC-5(4) Elev 740' A5002 F-21 LO6 LO8	
OPR	Aero Club de Valcourt 450-532-3035 Reg PPR	
PF	A-1,2 C-3,5	
FLT PLN	(bil) NOTAM FILE CYSC	
FIC	Québec 866-GOMÉTÉO or 866-WXBRIEF (Toll free within Canada) or 866-541-4105 (Toll free within Canada & USA)	
SERVICES	Chg may be levied for one or more svcs	
FUEL	100LL PNR	
S	2,4,5	
RWY DATA	Rwy 05/23 3750x40 asphalt/gravel, centre 20' asphalt Thld 05 displ 365'. Thld 23 displ 110'.	
RCR	Opr	
LIGHTING	05-(TE LO), 23-(TE LO) ARCAL-121.8 type J	
COMM	(bil)	
ATF	UNICOM ltd hrs O/T ttc 122.725 5NM 3800 ASL	
CAUTION	Numerous deer in the vic of the aprt. Possibility of vehicles and all-terrain vehicles on rwy. Antenna located at N45 27 35 W72 16 38 (1.9NM SE of A/D), 300 AGL, 1550 ASL, lighted day & night. Extv glider activity.	

CANADA FLIGHT SUPPLEMENT / GPH 205

Effective 0901Z 20 November 2008 to 0901Z 15 January 2009

B962 AERODROME/FACILITY DIRECTORY

VAL-D'OR VFR TERMINAL PROCEDURES CHART



LOCATION	IDENT	LAT/LONG
COLOMBIÈRE	VCOLB	N48° 05.55 W77° 34.48
DUBUISSON	VCDBO	N48° 06.80 W77° 56.80
ÎLE SISCOE	VCCSC	N48° 08.58 W77° 52.47
LAC CRÉMAZIE	VCREM	N47° 52.45 W77° 39.63
LAC LANGLADE	VCLGL	N48° 07.63 W77° 43.27
LAC SABOURIN	VCSAB	N47° 57.72 W77° 41.53
LOUVICOURT	VCLVC	N48° 04.20 W77° 22.52
MALARTIC	VCMAL	N48° 08.12 W78° 07.42
ST-EDMOND	VCSED	N48° 11.98 W77° 49.68
SULLIVAN	VCSUL	N48° 07.57 W77° 50.00
VAL-SENNEVILLE	VCSNV	N48° 11.12 W77° 39.27

CANADA FLIGHT SUPPLEMENT / GPH 205

Effective 0901Z 20 November 2008 to 0901Z 15 January 2009

B964 AERODROME/FACILITY DIRECTORY

VAL-D'OR / L'ESCALE QC (Heli)

CTR5

REF	N48 06 13 W77 48 24 Adj 14°W UTC-5(4) Elev 1010' A5009 E-18 F-21	
OPR	9027-3111 Québec (Motel L'Escale) 819-824-2711 Cert	
PF	B-1,2,5 C-3,4,6	
FLT PLN FIC	(bil) NOTAM FILE CYVO Québec 866-GOMÉTÉO or 866-WXBRIEF (Toll free within Canada) or 866-541-4105 (Toll free within Canada & USA)	
SERVICES S	7	
PAD DATA	63' x 51' wood elevated	
COMM RADIO RCO MF	(bil) 118.5 236.6 (E) 1030-0325Z‡ Rouyn rdo 118.5 (RAAS) 0325-1030Z‡ Québec rdo 126.7 (FISE) rdo 1030-0325Z‡ O/T Rouyn rdo 118.5 5NM 4000 ASL (CAR 602.98)	
NAV VOR/DME	YVO 113.7 Ch 84 N48 10 31 W77 49 13 187° 4.4NM to heli	
PRO	Arr/dep 060°/240° Curved approach/departure fr heli. Pilots shall make sure that approach and departure paths are free of vehicles and persons prior to landing at or departing fr heli. (CAR 602.96)	

VALEMOUNT BC

CAH4

REF	N52 51 10 W119 20 11 2.3NW 20°E UTC-8(7) Elev 2616' A5014 E-15 LO2 RCAP	
OPR	Village 250-566-4435 Reg	
PF	A-1 C-2,4,5	
FLT PLN FIC	NOTAM FILE CYKA Kamloops 866-WXBRIEF (Toll free within Canada) or 866-541-4101 (Toll free within Canada & USA)	
SERVICES FUEL S	100LL 250-566-4435 4,5	
RWY DATA RCR	Rwy 14(138°)/32(318°) 3931x75 asphalt Opr Ltd win maint	
COMM ATF	tfc 123.2 5NM 4200 ASL	
PRO	Rgt hand circuits rwy 32 (CAR 602.96).	
CAUTION	The rwy lctd aprx 2NE of aprt is clsd.	

CANADA FLIGHT SUPPLEMENT / GPH 205

Effective 0901Z 20 November 2008 to 0901Z 15 January 2009

AERODROME/FACILITY DIRECTORY B965

VALEMOUNT (YELLOWHEAD HELICOPTERS) BC (Heli)

CBV7

REF	N52 52 W119 18 20°E UTC-8(7) Elev 2600' A5014	
OPR	Yellowhead Helicopters Ltd 250-566-4401 Reg PNR	
PF	A-1 C-2,3,4,5	
FLT PLN	NOTAM FILE CYKA	
FIC	Kamloops 866-WXBRIEF (Toll free within Canada) or 866-541-4101 (Toll free within Canada & USA)	
SERVICES	Call out chg may be levied for one or more svcs	
FUEL	JA 16-24Z† Mon-Fri	
OIL	Mobil 254 (MIL-L-23699)	
PAD DATA	Pad 1: 20' dia concrete Pad 2: 20' dia concrete Pad 3: 50' x 50' concrete	
RCR	Opr	
COMM		
ATF	tfc 123.2 5NM 4200 ASL centred on Valemount land A/D	
PRO	Initial apch to mid-point of abandoned rwy, then final apch direct to touchdown pad (H).	

VALLEYFIELD QC See SALABERRY DE VALLEYFIELD

Sep 09

VALLEYFIELD (TRANSPORT BRS INC) QC (Heli)

CSY5

REF	N45 15 49 W74 08 57 Adj 15°W UTC-5(4) Elev 100' VTA A5002		
OPR	J. Corbeil 450-377-5560 Reg PPR		
PF	B-1 C-2,3,4,5,6		
FLT PLN	(bil) NOTAM FILE CYUL		
FIC	Québec 866-GOMÉTÉO or 866-WXBRIEF (Toll free within Canada) or 866-541-4105 (Toll free within Canada & USA)		
PAD DATA	45' x 45' gravel		
COMM			
ATF	tfc 123.2 2NM 2000 ASL		

CANADA FLIGHT SUPPLEMENT / GPH 205

Effective 0901Z 20 November 2008 to 0901Z 15 January 2009

B966 AERODROME/FACILITY DIRECTORY

VALLEYVIEW AB

CEL5

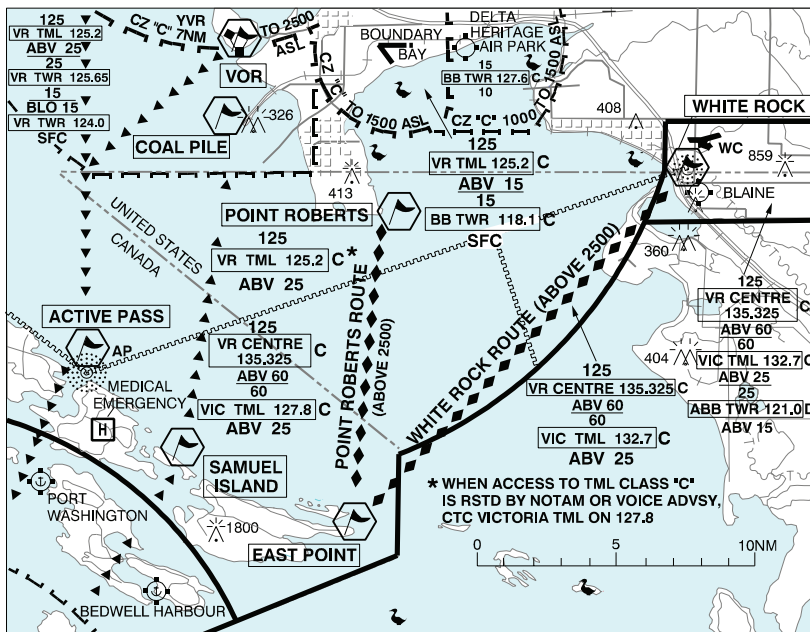
REF	N55 01 57 W117 17 45 1.9S 20°E UTC-7(6) Elev 2435' A5014 E-15 LO1	
OPR	Town 780-524-5150/5153 Reg	
PF	B-1 D-2,3,5	
FLT PLN	NOTAM FILE CYQU	
FIC	Edmonton 866-WXBRIEF (Toll free within Canada) or 866-541-4102 (Toll free within Canada & USA)	
ACC	Edmonton IFR 888-358-7526 or 780-890-8304/8305	
SERVICES		
FUEL	100LL, JB, FSII 888-778-8765	
OIL	All	
S	4,5,6	
RWY DATA	Rwy 07(070°)/25(250°) 3300x75 asphalt	
RCR	Opr Ltd maint	
LIGHTING	07-(TE ME), 25-(TE ME) ARCAL-123.2 type K	
COMM		
ATF	tfc 123.2 5NM 5500 ASL	
NAV		
NDB	8K 229 (L) N55 02 04 W117 17 19 at A/D Pvt Unmonitored	

CANADA FLIGHT SUPPLEMENT / GPH 205

Effective 0901Z 20 November 2008 to 0901Z 15 January 2009

B968 AERODROME/FACILITY DIRECTORY

VTPC FOR CROSSING THE SOUTHERN STRAIT OF GEORGIA ABOVE 2500 FT



1. Obtain discrete transponder code prior to departure directly from 888-987-2633 (888-YVR CODE).
2. Tfc departing all other locations in the Lower Mainland/southern Vancouver Island areas:
 - (a) Approaching Point Roberts or White Rock (south or westbound), select discrete transponder code. Ctc Vancouver Tml 125.2. Approaching East Point (north or eastbound) select discrete transponder code and ctc Victoria Tml 127.8
 - (b) Pilots will be assigned their choice of route from either: i) the eastern tip of Point Roberts to East Point, Saturna Island, or the reverse (Point Roberts Route), or ii) the White Rock NDB to East Point, or the reverse (White Rock Route). Pilots may not be cleared immediately. Cleared route may include stepped climb instructions but will have a final altitude of at least 4,500 ft.
 - (c) ATC will to the extent possible, clear acft more direct rte to destn.

Note 1: Items a), b), and c) apply to flts arriving/departing CYVR at times when access to the Tml Class "C" Airspace (i.e. above 2500 ft) rstd by NOTAM or voice advsy.

Pilots may still elect to cross the Strait of Georgia by remaining at or below 2500 ft and clear of the Tml Class "C" Airspace.

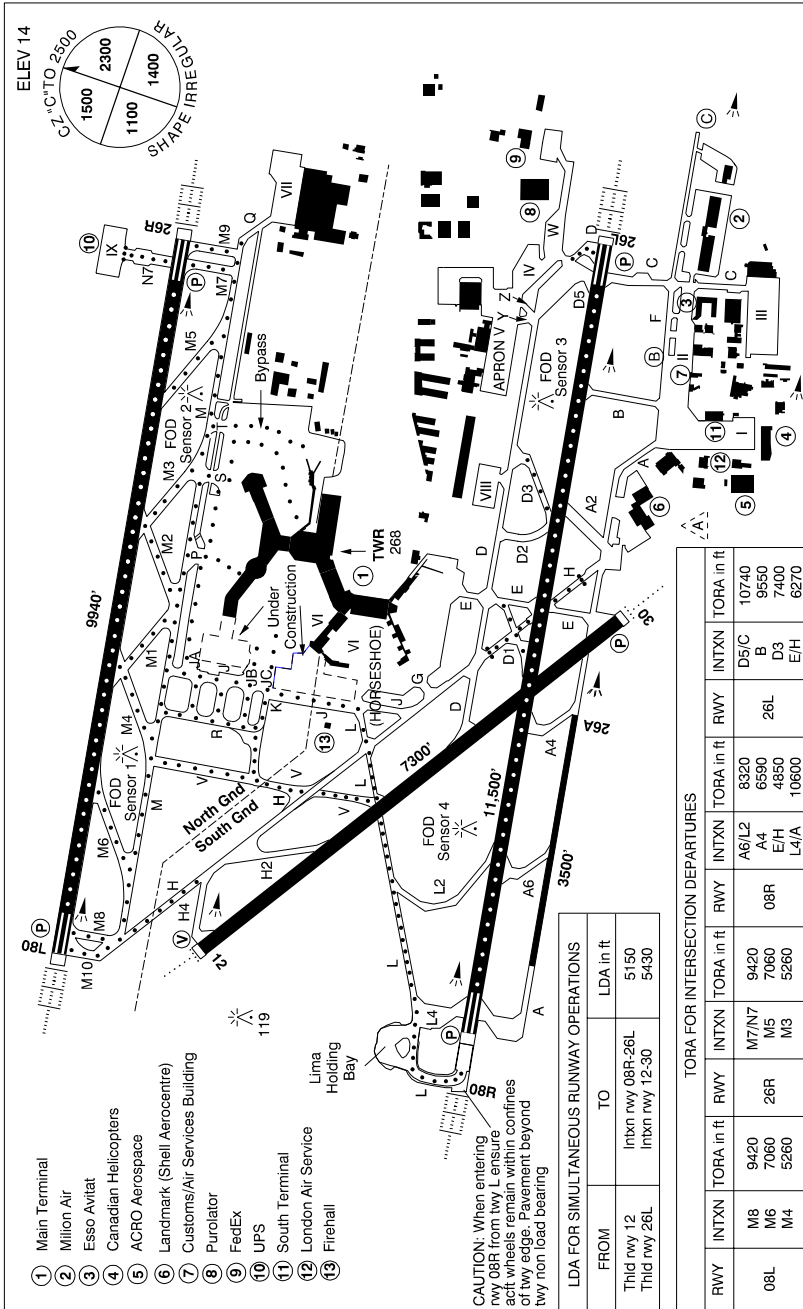
CANADA FLIGHT SUPPLEMENT / GPH 205

Effective 0901Z 20 November 2008 to 0901Z 15 January 2009

AERODROME/FACILITY DIRECTORY B969

VANCOUVER INTL BC

CYVR



CANADA FLIGHT SUPPLEMENT / GPH 205

Effective 0901Z 20 November 2008 to 0901Z 15 January 2009

B970 AERODROME/FACILITY DIRECTORY

VANCOUVER INTL BC (Cont'd)

CYVR

REF	N49 11 38 W123 11 04 Adj SW 19°E UTC-8(7) Elev 14' VTA A5004 E-15 LO2 HI3 T1 CAP OC
OPR	Vancouver International Airport Authority 604-207-7022 Cert Ldg fees
PF	Main tml bldg A-1,2,3,4,5,6; South side tml bldg A-1,2,3,6 B-5
CUST	AOE 888-226-7277
FLT PLN	NOTAM FILE CYVR
FIC	Kamloops 866-WXBRIEF (Toll free within Canada) or 866-541-4101 (Toll free within Canada & USA)
ACC	IFR 604-586-4590/4591 or 800-668-1333; IFR tng fits PPR ctc 604-586-4592 (collect calls accepted)
WX	METAR H24. TAF H24, issue times: 00, 03, 06, 09, 12, 15, 18, 21Z.
DUAT	Esso Avitat, Landmark (Shell Aerocentre)
PIK	Customs/Air Services bldg, room 212, airside access
SERVICES	
FUEL	100LL, JA, JA-1, FSII, HPR (CON S IP JA-1, FSII)
OIL	All
S	1,2,3
ARFF	9
SUP FL	LHOX D & A-ice
JASU	CE16, Air Start
PVT ADV	Esso Avitat 122.85 604-270-2222; Million Air 122.95 604-273-6688; Landmark (Shell Aerocentre) 123.0 604-279-9922; Seair Services 122.85 604-273-8900 at adj water A/D.
MIL CON	Landmark (Shell Aerocentre) Vancouver 604-279-9922
RWY DATA	Rwy 08R(081°)/26L(261°) 11,500x200 asphalt/concrete Thld 08R displ 500'. Rwy 08L(081°)/26R(261°) 9940x200 concrete Rwy 12(123°)/30(303°) 7300x200 asphalt/concrete Rwy 26A 3500x75 concrete. Avbl for day-vmc dep when rwy 26L active.
TWY	<u>Rwy 08L/26R arrivals:</u> Rapid exit twys M1-M6 design speed in wet conds is 50 kt (95 kph). <u>Rwy 08R/26L arrivals:</u> Acft exiting onto twy D1, turn N on twy H & hold short of twy D. Do not stop in rwy area. <u>Rwy 26R arrivals:</u> Reverse turns not auth Turbo-Jet. A340-600/B777-300 must exit twys M6/M8/M10. Turbo-Jets equipped with reverse thrust plan to exit twy M4 or beyond. Acft rolling long, planning to use twy H, see Standard Taxi Arrival Procedures CFS. <u>Rwy 26L arrivals:</u> Turns onto rwy 30 not auth without clnc. A340-600/B777-300 must exit twy L. <u>Rwy 08L arrivals:</u> Reverse turns to exit rwy not auth. Turbo-Jets equipped with reverse thrust plan to exit twy M3 or beyond. A340-600/B777-300 must exit twys M5/M7/M9. <u>Rwy 08R arrivals:</u> A340-600/B777-300 must exit twys D/D5. A340-600/B777-300 taxi routes: departure coded taxi routes: JA, JB, JC, P, T only. A340-600/B777-300 prohibited taxiways: A, A2, A4, A6, B, C, D2, D3, F, G, H, (south of 08R/26L), H2, H4, L2 & S. Twy D: No left hand turns onto 'H' by A321/B737-900 and larger.

CANADA FLIGHT SUPPLEMENT / GPH 205

Effective 0901Z 20 November 2008 to 0901Z 15 January 2009

AERODROME/FACILITY DIRECTORY B971

VANCOUVER INTL BC (Cont'd)

CYVR

RWY DATA (cont'd)	<p>TWY (cont'd) Rwy 08R departures: CAUTION: When entering rwy 08R from twy L, ensure acft wheels remain within confines of twy edge. Pavement beyond twy is non load bearing.</p> <p>Twy A2 max wt 50,000 lbs. Twy D2 max wt 100,000 lbs. Access rstd for DC-3 & larger acft on twy C north of F & twy A west of CAT II hold line, due GP interference, advise ATC if full rwy length is rqrd.</p> <p>Twy H: No rgt turns fr twy H to twy H4.</p> <p>Twy C (south of F), F, Q, W, Y & Z uncontrolled. Twys J, JA, K, P, R, S & T uncontrolled vehicle crossings.</p> <p>Twy P: No rgt turns on to twy P by B747 acft departing Apron VI when gate 73 is acft occupied. Twy S not avbl to A340-600/B777-300 acft.</p> <p>Wide body acft restrictions except B767/A310/A300: Twy "D5", "D" rstd from simultaneous use. Apron VI - exit from twy "G" and "S" not avbl; No right turns on to twy L. Twy "L" - no right turns on to apron VI. Twy "C" north of twy "F" not avbl. Twy "H" - no right turns on to "H4" or "D".</p> <p>Hel: Day VFR via arr/dep area A, B, & C. Night arr/dep via areas B & C (HeliJet apron only)</p> <p>APRON PPR YVR Ops for aprons I, II, III, VI, VIII. Apron VI bypass (taxilane centreline yellow lgt): Simultaneous use of dual taxilanes rstd to narrow body acft. Apron VI (horseshoe): simultaneous use of dual taxilanes rstd to B737, A320 acft or smaller. Apron III W of twy C max wt 12,500 lbs. Tow in/Tow out for Apron III acft parking positions 3A-3E.</p> <p>RCR Opr CRFI, PLR/PCN</p>
PAD DATA	<p>Pad A: unmarked arr/dep hover area</p> <p>Pad B: 79'x 79' asphalt 105'x 105'</p> <p>Pad C: 110' dia concrete 145' dia</p>
LIGHTING	<p>08R-AL(TE HI A TDZL) P3, 26L-AL(TE HI CL TDZL) P3, 08L-AL(TE HI A TDZL) P3, 26R-AL(TE HI A TDZL) P3, 12-AD (non-std 1400') (TE ME) V2, 30-AD(TE ME) P3</p> <p>Pad B: RY(HI) Pad C: RY(HI)</p>
COMM	<p>RCO Pacific rdo 123.15 (FISE)</p> <p>ATIS 124.6 124.75 restrictions are bcst on ATIS</p> <p>CLNC DEL 121.4 all dep acft ctc clnc del</p> <p>GND 121.7 (South) 127.15 (North) 275.8</p> <p>TWR 118.7 (South) 119.55 (North) VFR 124.0 125.65 226.5 236.6 (E) (emerg 604-775-9531)</p> <p>TML 125.2</p> <p>ARR 128.6/128.17 (Outer) 133.1 (Inner) 134.225 (Inner) 352.7</p> <p>DEP 126.125 (North) 132.3 (South) 363.8</p>
NAV	<p>VOT 114.8</p> <p>NDB VR 266 (M) N49 10 22 W123 03 26 261° 4.1NM to thld rwy 26L SEA ISLAND ZVR 368 (M) N49 11 29 W123 13 11 081° 0.6NM to thld rwy 08R WHITE ROCK WC 332 (L) N49 00 12 W122 45 01 285° 20.5NM to A/D</p> <p>VORTAC YVR 115.9 Ch 106 N49 04 38 W123 08 57 (17') 328° 7.1NM to A/D</p> <p>DME IVR 109.5 Ch 32 N49 11 17 W123 12 06 at A/D IFZ 110.7 Ch 44 N49 11 02 W123 09 56 at A/D IMK 111.1 Ch 48 N49 11 48 W123 11 59 (16') at A/D IRD 111.950 Ch 56(Y) N49 12 07 W123 09 50 (28') at A/D ITL 110.55 Ch 42(Y) N49 12 20 W123 11 47 (28') at A/D</p> <p>ILS IFZ 110.7 (Rwy 26L) RVR; IVR 109.5 (Rwy 08R) RVR; IMK 111.1 (Rwy 12) ITL 110.55 (Rwy 08L) RVR; IRD 111.950 (Rwy 26R) RVR</p>
PRO	<p>AIRSPACE: See VTA chart for VFR rtes & pro. Procedures for crossing the southern Strait of Georgia within Tml Class C airspace refer to VTPC. Transponder mode C rqrd in class C airspace and CZ. CARS Part VII operators must ensure routes flown at night meet minimum altitude requirements for commercial operations.</p>

CANADA FLIGHT SUPPLEMENT / GPH 205

Effective 0901Z 20 November 2008 to 0901Z 15 January 2009

B972 AERODROME/FACILITY DIRECTORY

VANCOUVER INTL BC (Cont'd)

CYVR

PRO (Cont'd)

AIRPORT: Peak tfc 14-02z±. Noise abatement see Canada Air Pilot & VTA chart. Run-ups, crossbleed starts, airstarts & jet engine starts on gate (Apron VI only): PPR ctc YVR ops 604-207-7022, Fax 604-276-6099. No ab initio tng. For water A/D info refer to Water A/D Supplement.

De-icing Procedures:

(See CAP 2 - De-icing pad chart): All de-icing at YVR will normally take place at the de-icing pads unless prior approval from YVR ops for frost removal at gate granted (see "De-icing at the Gates").

Pad Procedure:

1. Ctc de-icing service provider to obtain control number for de-icing pad slot.
2. Ctc gnd with control number and pad assignment provided by de-icing service provider prior to pushback
- 3A. West Pads: expect to queue on twys V, K, or R. Follow ATC instruction to bay assignment.
- 3B. West Pads: 7 bays, 5 may be used simultaneously. Some tandem use of bays permitted. Power in/power out all bays B767 & smaller. PPR fr YVR ops for power out A330 & larger.
4. East/South Pads: expect to hold on the gate until pad avail. Limited queuing avail on twy E for south pad. Follow ATC instruction.
5. East Pad: 3 bays (EN B757 or smaller, EC & ES A321 & smaller. Power in/power out all bays. Follow marshaller's instruction & guidance lgts for parking.
6. South Pad: One bay up to B737-900. Power in/push out or push in/power out. CRJ900 or smaller may power in/power out.

De-icing at the Gates/On Aprons:

Ltd de-icing at the gates permitted (frost removal etc). Only avail when there is no existing precipitation. Ctc YVR ops for approval/control number. Defrosting is permitted on the Purolator, Fedex & UPS aprons if all the catch basins on the apron are properly covered. Glycol recovery required for all on-gate de-icing.

ATC:

IFR Clearance Acknowledgement

IFR clearance read back with Vancouver Tower clearance delivery shall include the acft call sign, assigned SID name and transponder code.

Ground Control Procedure

YVR GND is divided into two sectors with separate freq. Ctc the next GND sector crossing the N/S boundary unless otherwise instructed by ATC.

Apron VI Users: See Standard Taxi Arrival/departure Procedures.

ARRIVALS:

Flow Times - IFR

Acft planning IFR fit into CYVR should ctc ATS prior to dep to determine flow status. If unable to determine thru ATS, ctc Vancouver ACC Flow Unit 877-987-2055.

Standard Taxi Arrival Procedures - 26R

Turbo Jets parking Apron VI gates 1-40 anticipate "Hotel Route".

Hotel Route: After exiting rwy 26R, taxi via M, H, ctc S gnd hold short H2.

ATS REQUIREMENTS:

All VFR acft arriving, departing or transiting the Vancouver or Victoria Tower Class C or D airspace require a transponder code.

- All acft departing Vancouver or Victoria Intl (including Water Aerodrome) call Vancouver ACC at 888-987-2633 (888-YVR-CODE) or 604-586-4595 for code assignment at least 30 min prior to flight or file a VFR Flight Plan/Flight Itinerary.

- All acft arriving Vancouver, Victoria Intl (including Water Aerodrome) or transiting Vancouver or Victoria Control Zones obtain a code from one of the following ATS units: Vancouver Harbour, Nanaimo, Victoria Harbour, Boundary Bay, Langley, Abbotsford or Pitt Meadows or call Vancouver ACC at 888-987-2633 (888-YVR-CODE) or 604-586-4595.

-All acft arriving Victoria Intl from a non NAV CANADA site call Vancouver ACC at 888-987-2633 (888-YVR-CODE) or 604-586-4595 for code assignment at least 30 minutes prior to flight or file a VFR Flight Plan/ Flight Itinerary.

CANADA FLIGHT SUPPLEMENT / GPH 205

Effective 0901Z 20 November 2008 to 0901Z 15 January 2009

AERODROME/FACILITY DIRECTORY B973

VANCOUVER INTL BC (Cont'd)

CYVR

PRO (Cont'd)

DEPARTURES:

Coded Taxi Routes

READ BACK: "CODE ROUTE (code) & ASSIGNED RWY"

Monitor TWR freq approaching the hold line of the assigned rwy

Rwy 08R/26L - TWR 118.7 Rwy 08L/26R - TWR 119.55

CODE	TAXI ROUTE
Delta	Rwy 08R - D, H, hold short L unless otherwise instructed
	Rwy 08L - D, H, hold short M, ctc gnd 127.15 for taxi via M, M10
	Rwy 26R - D, H, J, hold short K, ctc gnd 127.15 for taxi via M, M9
	Rwy 26L - D
Echo	Rwy 08R - E, D, H, hold short L unless otherwise instructed
	Rwy 08L - E, D, H, hold short M, ctc gnd 127.15 for taxi via M, M10
	Rwy 26R - E, D, H, J, hold short K, ctc gnd 127.15 for taxi via M, M9
	Rwy 26L - E, D
Golf	Rwy 08R - G, H, hold short L unless otherwise instructed
	Rwy 08L - G, H, hold short M, ctc gnd 127.15 for taxi via M, M10
	Rwy 26R - G, H, J, hold short K, ctc gnd 127.15 for taxi via M, M9
	Rwy 26L - G, H, D
Hotel	Rwy 26R - After landing & exiting rwy 26R taxi via M, H, ctc S gnd 121.7, hold short H2
Juliet-Alpha	Rwy 08R - JA, J, hold short L, ctc gnd 121.7 for taxi via L
	Rwy 08L - JA, J, M, M10
	Rwy 26R - JA, J, M, M9
	Rwy 26L - JA, J, hold short L, ctc gnd 121.7 for taxi via H, D
Juliet-Bravo	Rwy 08R - JB, J, hold short L, ctc gnd 121.7 for taxi via L
	Rwy 08L - JB, J, M, M10
	Rwy 26R - JB, J, M, M9
	Rwy 26L - JB, J, hold short L, ctc gnd 121.7 for taxi via H, D
Juliet-Charlie	Rwy 08R - JC, J, hold short L, ctc gnd 121.7 for taxi via L
	Rwy 08L - JC, J, M, M10
	Rwy 26R - JC, J, M, M9
	Rwy 26L - JC, J, hold short L, ctc gnd 121.7 for taxi via H, D
Lima	Rwy 08R - hold on the apron short of L
	Rwy 08L - L, H, hold short M, ctc gnd 127.15 for taxi via M, M10
	Rwy 26R - L, J, hold short K, ctc gnd 127.15 for taxi via M, M9
Rwy 26L-L, J, H, D	
Papa	Rwy 08R - P, M, J, hold short L, ctc gnd 121.7 for taxi via L
	Rwy 08L - P, M, M10
	Rwy 26R - P, M, M9
	Rwy 26L - P, M, J, hold short L, ctc gnd 121.7 for taxi via H, D
Sierra	Rwy 08R - S, M, J, hold short L, ctc gnd 121.7 for taxi via L
	Rwy 08L - S, M, M10
	Rwy 26R - S, M, M9
	Rwy 26L - S, M, J, hold short L, ctc gnd 121.7 for taxi via H, D
Tango	Rwy 08R - T, M, J, hold short L, ctc gnd 121.7 for taxi via L
	Rwy 08L - T, M, M10
	Rwy 26R - T, M, M9
	Rwy 26L - T, M, J, hold short L, ctc gnd 121.7 for taxi via H, D

CAUTION

Migratory birds in vic of aprt fr aprx Oct-Apr.
 ALL JET ACFT: Light acft susceptible to jetblast when turning fr twy F on to C.
 Frequent VFR float acft activity on river S side of aprt.

CANADA FLIGHT SUPPLEMENT / GPH 205

Effective 0901Z 20 November 2008 to 0901Z 15 January 2009

B974 AERODROME/FACILITY DIRECTORY

VANCOUVER CENTRE	((emerg only 604-586-4500)	CZVR
124.075	124.075	133.7 133.7 134.4 134.8 134.8 135.325 245.0 245.0 294.5 294.5 350.7
Burns Lake	123.875 123.875	132.525 132.525
Castlegar	134.2 134.2	227.3 227.3
Cranbrook	133.6	
Enderby	134.55 134.55	381.9 381.9
Kains Mountain	133.775 133.775	
Kamloops	132.35 133.5 134.4 134.4	135.5 236.0 236.0 294.0
Port Hardy	132.2 134.6	266.3 266.3
Prince George	133.8 133.8	231.95 231.95
Prince Rupert	133.675 133.675	284.0 284.0
Princeton	135.0 135.0	351.3 351.3
Puntzi	135.05 135.05	315.7 315.7
Sandspit	133.4 133.4	227.2 227.2
Terrace	128.4 128.4	269.1 269.1
Tofino	132.9 132.9	254.9 254.9
Williams Lake	134.0 134.0	381.4 381.4

VANCOUVER (CHILDREN & WOMEN'S HEALTH CENTRE) BC (Heli) CAK7

REF	N49 14 38 W123 07 39 19°E UTC-8(7) Elev 225' VTA	
OPR	Children's Hosp 604-875-2345 Cert PPR	
PF	B-1,2,4 C-3,5,6	
FLT PLN	NOTAM FILE CYVR	
FIG	Kamloops 866-WXBRIEF (Toll free within Canada) or 866-541-4101 (Toll free within Canada & USA)	
PAD DATA	45' dia concrete turf 114' dia, 50,000 lbs, max length 57'	
LIGHTING	LO Apch lgt consists of 5 lgt spaced 25' apart. PNR	
COMM	ATIS Vancouver Harbour 126.8 dur twr hrs of ops 604-775-9541 CLNC DEL Vancouver Harbour 125.35 all dep acft ctc clnc del dur twr oprg hrs TWR Vancouver Harbour 118.4 07-18 hrs lcl or til 1/2 hr after SS, whichever is later O/T ftc Vancouver Harbour CZ shape irregular 2000 ASL.	
PRO	Rstd to multi-engined heli capable of remaining at least 4.5m above all obstacles within arr/dep area, when operating in accordance with their Aircraft Flight Manual with one engine inoperative. 24% apch slope rqrd. Arr/dep 344° brg fr heli. Not abv 1200 AGL. Noise sensitive area, use noise abatement profile for acft type. Transponder mode C rqrd in CZ & tml class "C" airspace.	
CAUTION	Emergency ldg areas ltd to first 175m N of heli. Crane 370 MSL 800' NNE of pad	

CANADA FLIGHT SUPPLEMENT / GPH 205

Effective 0901Z 20 November 2008 to 0901Z 15 January 2009

AERODROME/FACILITY DIRECTORY B975

VANCOUVER / DELTA (NORTH) BC (Heli)

CBD2

REF	N49 07 12 W123 02 45 Adj 19°E UTC-8(7) Elev 10' VTA	
OPR	North Delta Copters Ltd. 604-946-0404 Reg PPR	
PF	A-1 C-2,5,6 D-3,4	
FLT PLN	NOTAM FILE CYVR FIC Kamloops 866-WXBRIEF (Toll free within Canada) or 866-541-4101 (Toll free within Canada & USA)	
PAD DATA	36' x 36' concrete 204' x 135'	
RCR	Opr	
COMM	ATIS Boundary Bay 125.5 15-07Z±; Vancouver 124.6 TWR Boundary Bay 118.1 call prior to dep. Vancouver 124.0	
PRO	NOISE ABATEMENT PROCEDURES: Avoid overflight of noise sensitive area. Arr/dep rtes: min 600 ASL til final, see A/D sketch.	
CAUTION	Fuel pump aprx 2.5' high adj to touchdown pad. Unlit obst aprx 100' to the N of heli. Transponder mode C rqrd in CZ & tml class "C" airspace.	

VANCOUVER / DELTA (SEI) BC (Heli)

CSE7

REF	N49 07 45 W123 01 06 19°E UTC-8(7) Elev 37' A1901	
OPR	Sei Industries Ltd 604-946-3131 Reg PPR	
PF	A-1 C-2,3,5 D-4,6	
FLT PLN	NOTAM FILE CYVR FIC Kamloops 866-WXBRIEF (Toll free within Canada) or 866-541-4101 (Toll free within Canada & USA)	
PAD DATA	20' x 20' aluminum deck 52' x 52' max 3000 lbs	
RCR	Opr	
COMM	ATIS Boundary Bay 125.5 15-07Z±; Vancouver 124.6 TWR Boundary Bay 118.1 call prior to dep. Vancouver 124.0	
PRO	Arr/dep btwn 115°-180° fr heli. Do not overfly bldgs west of heli.	
CAUTION	Crane SW of heli.	

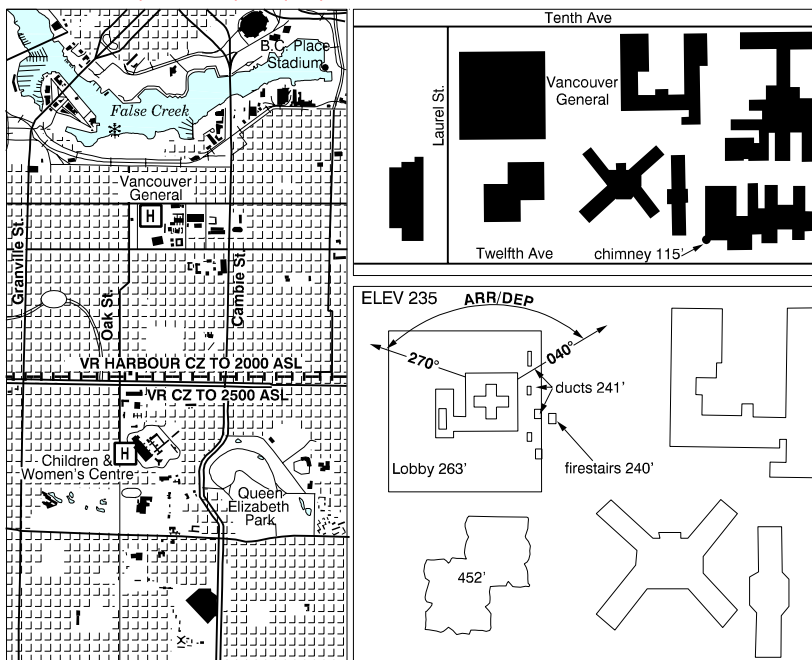
CANADA FLIGHT SUPPLEMENT / GPH 205

Effective 0901Z 20 November 2008 to 0901Z 15 January 2009

B976 AERODROME/FACILITY DIRECTORY

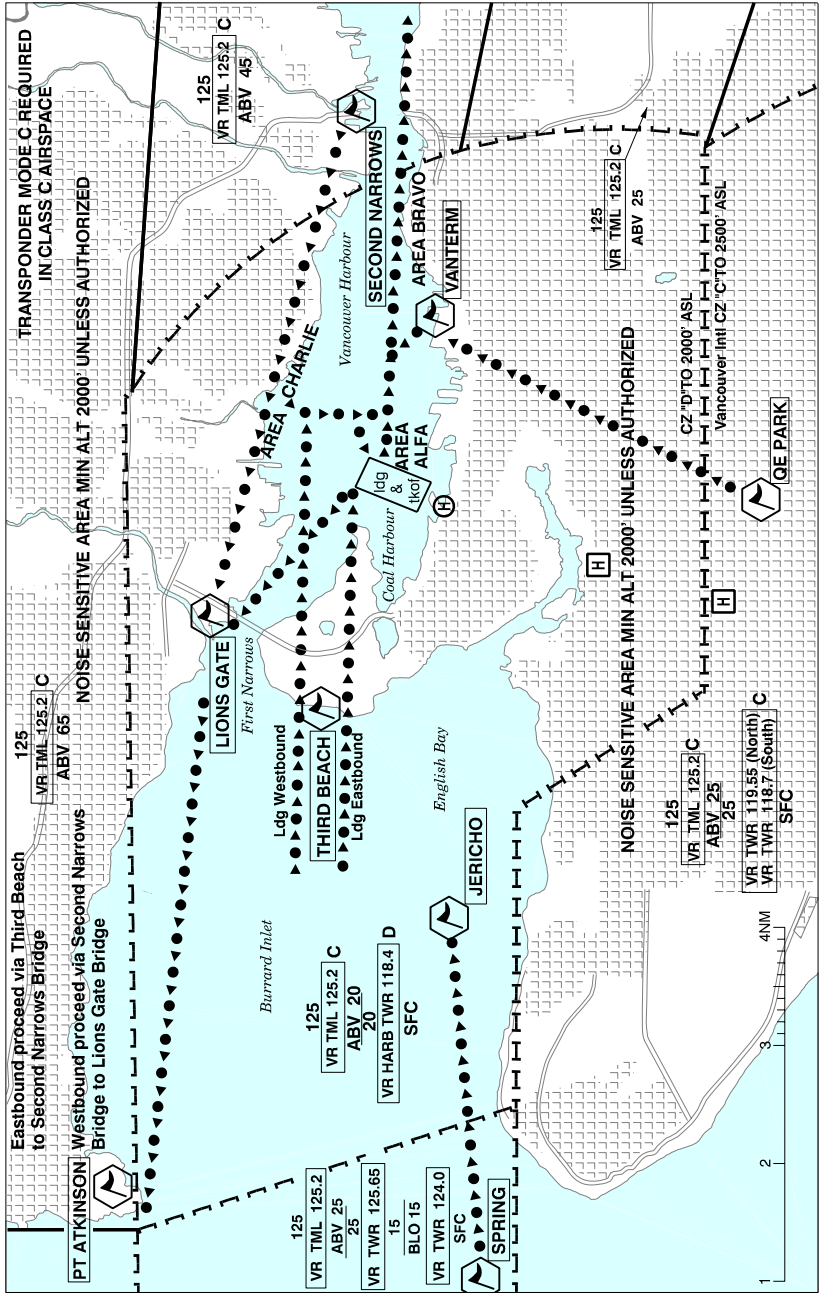
VANCOUVER (GEN HOSP) BC (Heli)

CBK4



REF	N49 15 42 W123 07 20 19°E UTC-8(7) Elev 235' VTA
OPR	Vancouver Hosp & Health Science Centre 604-875-4870 Cert PPR
PF	B-1,2,4 C-3,5,6
FLT PLN	NOTAM FILE CYVR
FIC	Kamloops 866-WXBRIEF (Toll free within Canada) or 866-541-4101 (Toll free within Canada & USA)
PAD DATA	90' x 90' concrete, rooftop 120' x 120' 11,000 lbs
RCR	Provincial dispatch EHS 800-561-8011 or 250-656-3822
LIGHTING	RY(LO) RF(FL) DR(LO) ARCAL-123.2 type J
COMM	
ATIS	Vancouver Harbour 126.8 dur twr oprg hrs 604-775-9541
CLNC DEL	Vancouver Harbour 125.35 all dep acft ctc clnc del dur twr oprg hrs.
TWR	Vancouver Harbour 118.4 07-18 hrs lcl or til 1/2 hr after SS, whichever is later, O/T tfc Vancouver Harbour CZ shape irregular 2000 ASL.
A/G	Hosp security 166.47 FM
PRO	Arr/dep area 270° to 040°. Rstd to multi-engined heli capable of remaining at least 4.5m above all obstacles within apch/dep area, when operating in accordance with their Aircraft Flight Manual with one engine inoperative. Ctc provincial dispatch EHS prior to arr/dep on 130.275 VHF-AM.
CAUTION	Crane 300 MSL 580' NE of pad

VANCOUVER HARBOUR VFR TERMINAL PROCEDURES CHART



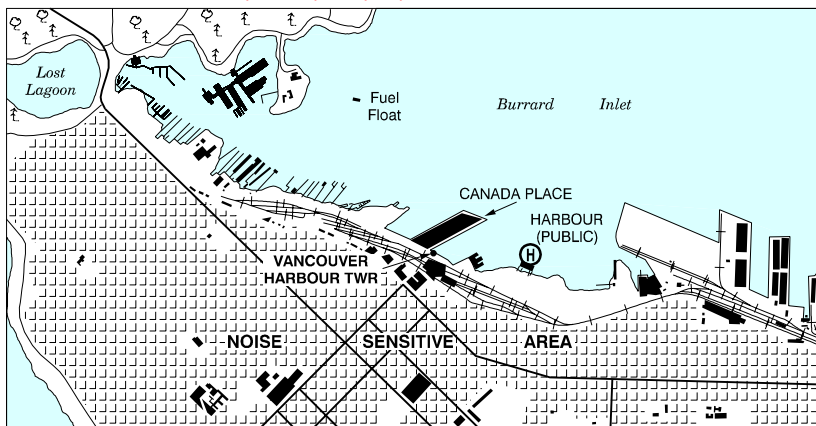
CANADA FLIGHT SUPPLEMENT / GPH 205

Effective 0901Z 20 November 2008 to 0901Z 15 January 2009

B978 AERODROME/FACILITY DIRECTORY

VANCOUVER / HARBOUR (PUBLIC) BC (Heli)

CBC7



REF	N49 17 13 W123 06 26 Adj N 19°E UTC-8(7) Elev 2' VTA T1 CAP RCAP	<p>ELEV 2</p>
OPR	Pacific Heliport Services 604-688-4646/Fax 688-4650 Cert Ldg fees	
PF	B-1 C-1,2,3,4,5,6	
FLT PLN	NOTAM FILE CYVR	
FIC	Kamloops 866-WXBRIEF (Toll free within Canada) or 866-541-4101 (Toll free within Canada & USA)	
ACC	IFR 604-586-4590/4591 or 800-668-1333; IFR tng flts PPR ctc 604-586-4592 or 800-668-1333.	
SERVICES		
FUEL	JA	
S	1,5,6	
PAD DATA	Two arr/dep hover areas to E & W. Centre tkof/ldg area 60' x 60' concrete 20,000 lbs. Heli in excess of 60' overall length PPR PAD-1 53' dia concrete 50,000 lbs PAD-2 53' dia concrete 50,000 lbs PAD-3 53' dia concrete 20,000 lbs PAD-4 44' dia concrete 20,000 lbs	
APRON	Prkg fees; ctc opr	
RCR	Opr	
LIGHTING	RY LO ARCAL-118.4 type J, RR around deck.	
COMM		
ATIS	Vancouver Harbour 126.8 dur TWR hrs of ops 604-775-9541	
CLNC DEL	Vancouver Harbour 125.35 all dep acft ctc clnc del dur twr oprg hrs.	
TWR	Vancouver Harbour 118.4 0700-1800 hrs lcl or til 1/2 hr after SS, whichever is later. (emerg only 604-688-9254)	
ATF	tfc 118.4 when TWR clsd within Vancouver Harbour CZ shape irregular 2000 ASL.	
ARR	128.6	
DEP	126.125	
UNICOM	122.35	

CANADA FLIGHT SUPPLEMENT / GPH 205

Effective 0901Z 20 November 2008 to 0901Z 15 January 2009

AERODROME/FACILITY DIRECTORY B979

VANCOUVER / HARBOUR (PUBLIC) BC (Heli) (Cont'd)

CBC7

PRO	5 min prior to ldg ctc Opr on 122.35 for prkg instructions. Dep climb over water BPOC. DAY: Wind & tfc permitting arr/dep via tkof/ldg area (marked triangle) O/T via unmarked hover areas over water immediately E & W of helipad. NIGHT: Arr/dep via tkof/ldg area. No stopping on tkof/ldg area. (See heli sketch on previous page). Procedures for crossing the southern Strait of Georgia within Tml Class C airspace refer to Vancouver Intl, VTPC for Crossing the Southern Strait of Georgia. See Vancouver VTA for VFR low level routes.
CAUTION	Remain clear of seabus tfc.

VANCOUVER (VANCOUVER FILM STUDIOS) BC (Heli)

CFS9

REF	N49 15 37 W123 01 43 19°E UTC-8(7) Elev 50' VTA	
OPR	Studio Air Group Inc 604-453-5000 Cert PNR	
PF	A-1,2,3 C-4,5	
FLT PLN	NOTAM FILE CYVR	
FIC	Kamloops 866-WXBRIEF (Toll free within Canada) or 866-541-4101 (Toll free within Canada & USA)	
PAD DATA	60' x 60' 75' x 75' concrete Rstd to max wt 12,000 lbs Rstd to max length 60'	
RCR	Studio Security 604-453-5055	
COMM		
ATIS	Vancouver Harbour 126.8 dur twr hrs of ops 604-775-9541	
CLNC DEL	Vancouver Harbour 125.35 all dep acft ctc clnc del dur twr oprg hrs.	
TWR	Vancouver Harbour 118.4 dur twr hrs of ops	
A/G	Studio Heliport 131.50 10 min prior to ldg	
PRO	Curved arr/dep E fr heli. Follow abv BNR railway tracks. Heli not auth for use when railway track to N & 625m E of heli occupied (CAR 602.96). Min VMC conditions of 3 miles & clouds at 1500 AGL.	

VANDERHOOF BC

CAU4

REF	N54 02 46 W124 00 45 1.3N 21°E UTC-8(7) Elev 2225' A5014 E-15 LO1	
OPR	District 250-567-4711 Reg	
PF	B-1 C-2,3,4,5,6	
FLT PLN	NOTAM FILE CYXS	
FIC	Kamloops 866-WXBRIEF (Toll free within Canada) or 866-541-4101 (Toll free within Canada & USA)	
SERVICES	15-24Z Guardian Aerospace 250-567-2655 O/T 250-567-8952/8951 PNR for float planes	
FUEL	100LL, MOGAS	
OIL	15/50, 80, 100	
S	1,2,3,4,5,6,7	

CANADA FLIGHT SUPPLEMENT / GPH 205

Effective 0901Z 20 November 2008 to 0901Z 15 January 2009

B980 AERODROME/FACILITY DIRECTORY

VANDERHOOF BC (Cont'd)

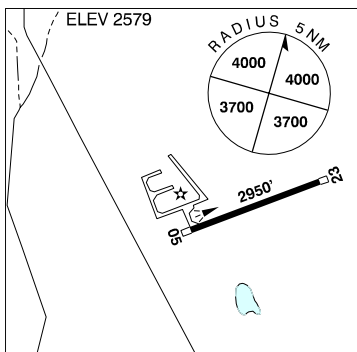
CAU4

RWY DATA	Rwy 07/25 5018x75 asphalt Thld 25 displ 200'. Rwy 02/20 5200x180 turf/gravel Rwy 15/33 3200x180 turf/gravel Thld 15 displ 100'.
RCR	Opr Ltd win maint.
COMM	
ATF	tfc 122.8 5NM 5200 ASL
CAUTION	Migratory bird route

VAUXHALL AB

CEN6

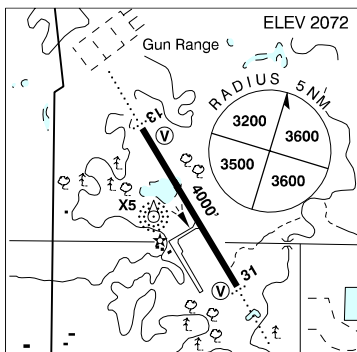
REF	N50 02 W112 05 2.5SSE 16°E UTC-7(6) Elev 2579' A5005 E-16
OPR	Kinniburgh Spray Services Ltd 403-223-8245 Reg
PF	B-1 C-2,5 D-4,6
FLT PLN	NOTAM FILE CYQL
FIC	Edmonton 866-WXBRIEF (Toll free within Canada) or 866-541-4102 (Toll free within Canada & USA)
ACC	Edmonton IFR 888-358-7526 or 780-890-8304/8305
RWY DATA	Rwy 05(053°)/23(233°) 2950x75 asphalt
RCR	Opr Ltd maint
LIGHTING	05-(TE ME), 23-(TE ME) ARCAL-123.2 type K
COMM	
ATF	tfc 123.2 5NM 5600 ASL



VEGREVILLE AB

CEV3

REF	N53 30 52 W112 01 39 Adj NE 17°E UTC-7(6) Elev 2072' A5015 E-15 E-16 LO2 CAP3
OPR	Town 780-632-3439 Reg
PF	B-1 D-2,3,5
FLT PLN	NOTAM FILE CYEG
FIC	Edmonton 866-WXBRIEF (Toll free within Canada) or 866-541-4102 (Toll free within Canada & USA)
ACC	Edmonton IFR 888-358-7526 or 780-890-8304/8305
SERVICES	
FUEL	100LL
OIL	All
RWY DATA	Rwy 13/31 4000x100 asphalt
RCR	Opr Ltd maint
LIGHTING	13-AD AS(TE ME) V1, 31-AD AS(TE ME) V1 ARCAL-122.8 type J (lgt avbl medium setting only)
COMM	
ATF	UNICOM ltd hrs O/T tfc 122.8 5NM 5100 ASL



CANADA FLIGHT SUPPLEMENT / GPH 205

Effective 0901Z 20 November 2008 to 0901Z 15 January 2009

AERODROME/FACILITY DIRECTORY B981

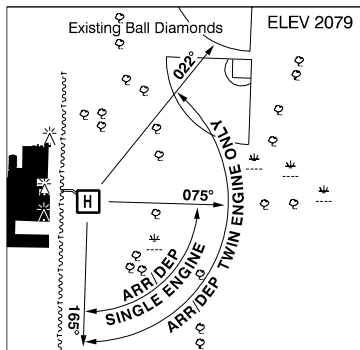
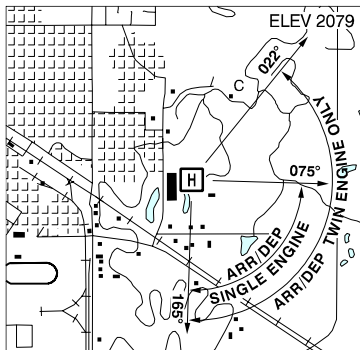
VEGREVILLE AB (Cont'd)

CEV3

NAV	NDB X5 225 (L) N53 30 47 W112 01 45 at A/D Pvt Unmonitored
PRO	Rgt hand circuits rwy 31 (CAR 602.96).
CAUTION	Gun club firing range 1NM NW; avoid area or overfly not less than 1000 AGL. Ultra-light activity in vic. Rdo ctl model acct activity at A/D.

VEGREVILLE (ST. JOSEPH'S GENERAL HOSP) AB(Heli)

CVG8



REF	N53 29 38 W112 01 57 ADJE 17°E UTC-7(6) Elev 2079' A5005 E-15 E-16
OPR	St. Joseph's General Hospital 780-632-2811 Cert PPR
FLT PLN	NOTAM FILE CYEG
FIC	Edmonton 866-WXBRIEF (Toll free within Canada) or 866-541-4102 (Toll free within Canada & USA)
ACC	Edmonton 888-358-7526 or 780-890-8304/8305
PAD DATA	86' dia FATO concrete/grass 115' dia safety area
LIGHTING	RY(LO) green portable
COMM	
ATF	UNICOM ltd hrs 122.8 5 NM 5100 ASL
PRO	Twin engine only - Arr/dep path ARC 22° thru 165° clockwise single engine - Arr/dep path 75° and 165°.

CANADA FLIGHT SUPPLEMENT / GPH 205

Effective 0901Z 20 November 2008 to 0901Z 15 January 2009

B982 AERODROME/FACILITY DIRECTORY

VERMILION AB

CYVG

REF	N53 21 21 W110 49 26 Adj E 16°E UTC-7(6) Elev 2025' A5015 E-16 LO2 HI3 CAP	
OPR	Town 780-853-5358 Reg	
PF	B-1 C-2,3,4,5,6	
FLT PLN	NOTAM FILE CYVG	
FIC	Edmonton 866-WXBRIEF (Toll free within Canada) or 866-541-4102 (Toll free within Canada & USA)	
ACC	Edmonton IFR 888-358-7526 or 780-890-8304/8305	
RWY DATA	Rwy 10(102°)/28(282°) 3300x75 asphalt Thld 28 displ 1100'.	
RCR	Opr Ltd maint	
LIGHTING	10-(TE LO), 28-(TE LO) ARCAL-122.8 type J	
COMM		
ATF	tfc 122.8 5NM 5100 ASL	
NAV		
NDB	VG 230 (L) N53 20 16 W110 47 48 303° 1.2NM to A/D	
PRO	Rgt hand circuits rwy 28 (CAR 602.96). For IFR clnc, phone Edmonton FIC prior to departure.	
CAUTION	Grain terminal 4400' ESE thld rwy 28, 230 AGL, 2238 ASL.	

VERMILION HEALTH CENTRE AB (Heli)

CVH2

REF	N53 21 21 W110 52 18 16°E UTC-7(6) Elev 2011' A5015 RCAP	
OPR	Vermilion Health Centre 780-853-5305 Cert PPR	
FLT PLN	NOTAM FILE CYVG	
FIC	Edmonton 866-WXBRIEF (Toll free within Canada) or 866-541-4102 (Toll free within Canada & USA)	
ACC	Edmonton IFR 888-358-7526 or 780-890-8304/8305	
PAD DATA	39' dia concrete; 82' oval FATO; 109' dia safety area.	
RCR	Opr	
LIGHTING	RY(LO)	
COMM		
ATF	tfc 122.8 5NM 5100 ASL centred on Vermilion A/D 1.7NM ENE	
PRO	Arr/dep path 116°.	
CAUTION	P-lines south & east of heli. Construction adj south boundary.	

CANADA FLIGHT SUPPLEMENT / GPH 205

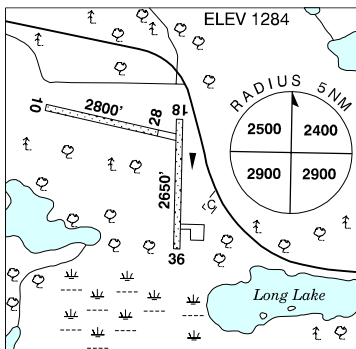
Effective 0901Z 20 November 2008 to 0901Z 15 January 2009

AERODROME/FACILITY DIRECTORY B983

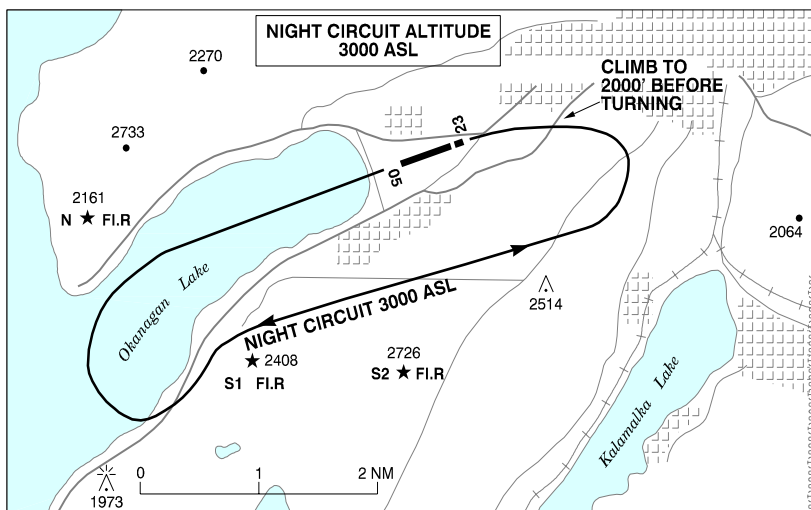
VERMILION BAY ON

CKQ7

REF	N49 52 47 W93 26 11 1°E UTC-6(5) Elev 1284' A5007 E-17
OPR	Muni of Machin 807-227-2633 Reg
PF	C-1,2,3,4,5
FLT PLN	NOTAM FILE CYHD
FIC	Winnipeg 866-WXBRIEF (Toll free within Canada) or 866-541-4103 (Toll free within Canada & USA)
SERVICES	
S	4,5
RWY DATA	Rwy 10(105°)/28(285°) 2800x75 gravel Rwy 18(180°)/36(360°) 2650x75 turf/gravel
RCR	Opr No win maint
COMM	
ATF	tfc 130.7 5NM 4300 ASL
CAUTION	Terrain rises both E & W of rwy 10/28.



VERNON VFR TERMINAL PROCEDURES CHART - NIGHT CIRCUIT PROCEDURE



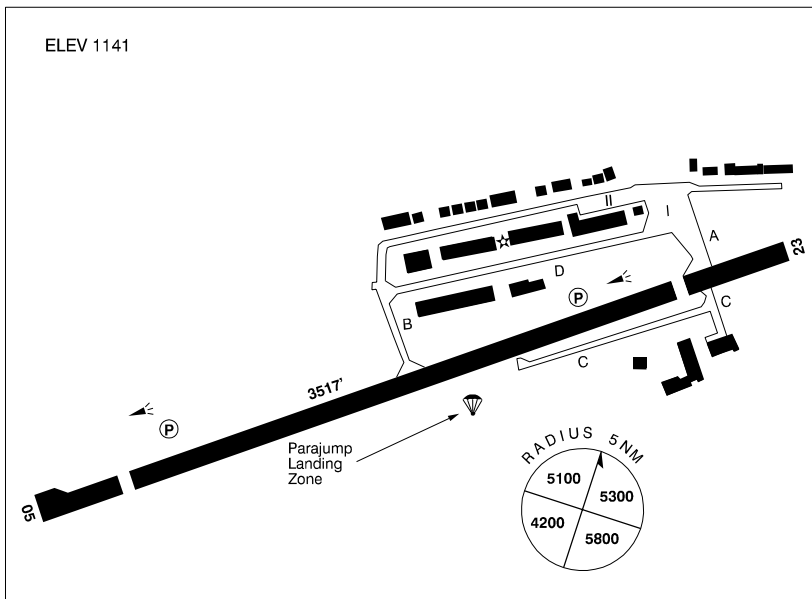
CANADA FLIGHT SUPPLEMENT / GPH 205

Effective 0901Z 20 November 2008 to 0901Z 15 January 2009

B984 AERODROME/FACILITY DIRECTORY

VERNON BC

CYVK



REF	N50 14 46 W119 19 51 1.8SW 18°E UTC-8(7) Elev 1141' A5005 E-15 LO2 CAP
OPR	Vernon Regional Airport Corporation 250-545-3035 Cert
PF	B-1 C-2,3,4,5,6
FLT PLN	NOTAM FILE CYVK
FIC	Kamloops 866-WXBRIEF (Toll free within Canada) or 866-541-4101 (Toll free within Canada & USA)
WX	LWIS (Pvt) (see COMM)
SERVICES	
FUEL	100LL (Self Serve, Visa, Mastercard, Amex, debit), JA, SP, Vernon Regional Airport, Jet A call out chg may be levied after hrs 250-309-CYVK (2985)
OIL	All
S	2,3,4,5
RWY DATA	Rwy 05(053°)/23(233°) 3517x75 asphalt Thld 05 displ 364' Thld 23 displ 456'.
TWY	Twy C day use only.
RCR	Vernon Regional Airport Corporation 250-545-2985 Ltd win maint
LIGHTING	05-(TE ME) P1 3.5°, 23-(TE ME) P1 4° ARCAL-122.8 type K.
COMM	
MF	UNICOM ltd hrs O/T tfc 122.8 5NM 4100 ASL (CAR 602.98) Exc area within class "D" airspace.
LWIS (Pvt)	122.55
NAV	
NDB	6K 302 (M) N50 21 00 W119 15 36 184° 6.6NM to A/D Pvt
RESTRICTIONS	OPERATING RESTRICTIONS 1. Pursuant to CARS 602.96(3)(D), not certified for ngmt ops unless S2 beacon is oprg.

CANADA FLIGHT SUPPLEMENT / GPH 205

Effective 0901Z 20 November 2008 to 0901Z 15 January 2009

AERODROME/FACILITY DIRECTORY B985

VERNON BC (Cont'd)

CYVK

PRO	Day: Circuit hgt 2400 ASL. Night: Rgt hand circuits rwy 05 (CAR 602.96). Circuit hgt 3000 ASL.
CAUTION	Only pilots familiar with lcl terrain should use this aprt dur hrs of darkness. Marked fence parallels & lies within 200' of centreline of apch to rwy 05. Extv parajumping in area. Glider activity ocsl to 12,500 ASL & ultra-light activity at A/D. Water A/D 0.5NM SW tfc at 1600 ASL.

VICTORIA (BC HYDRO) BC (Heli)

CBC5

REF	N48 29 25 W123 23 26 3.9NNW 19°E UTC-8(7) Elev 40' VTA A5004	
OPR	BC Hydro 250-727-5126 Cert PNR	
PF	B-1 C-2,3,4,5 D-6	
FLT PLN	NOTAM FILE CYYJ	
FIC	Kamloops 866-WXBRIEF (Toll free within Canada) or 866-541-4101 (Toll free within Canada & USA)	
PAD DATA	59' x 59' asphalt 80' x 80'	
RCR	Don Urquhart 250-727-5126 16-24Z†	
COMM		
RADIO	Harbour rdo 122.2 1345-0530Z† (emerg only 250-953-1500)	
RCO	Pacific rdo 126.7 (FISE)	
MF/ATF	Harbour rdo 1345-0530Z† O/T tfc 122.2 5NM 2500 ASL within Victoria Harbour CZ (CAR 602.98).	
PRO	Single arr/dep path 004° fr heli. Optimum noise abatement proc to be utilized.	

VICTORIA (GEN HOSP) BC (Heli)

CBW7

REF	N48 28 02 W123 25 57 19°E UTC-8(7) Elev 55' VTA	
OPR	Greater Victoria Hosp Society 250-727-4212 Cert PPR	
PF	B-1,2,4 C-3,5,6	
FLT PLN	NOTAM FILE CYYJ	
FIC	Kamloops 866-WXBRIEF (Toll free within Canada) or 866-541-4101 (Toll free within Canada & USA)	
PAD DATA	60' x 60'	
RCR	Rstd to heli length of 57'.	
COMM		
RADIO	Harbour rdo 122.2 1345-0530Z†	
RCO	Pacific rdo 126.7 (FISE)	
MF/ATF	Harbour rdo 1345-0530Z† O/T Harbour tfc 122.2 5NM 2500 ASL within Victoria Harbour CZ (CAR 602.98)	
PRO	East arr/dep 102°; West arr/dep 282°.	

CANADA FLIGHT SUPPLEMENT / GPH 205

Effective 0901Z 20 November 2008 to 0901Z 15 January 2009

B986 AERODROME/FACILITY DIRECTORY

VICTORIA (ROYAL JUBILEE HOSP) BC (Heli)

CBK8

REF	N48 26 03 W123 19 31 1S 19°E UTC-8(7) Elev 50' VTA	
OPR	Royal Jubilee Hosp 250-595-9200 Cert PPR	
PF	B-1,2,4 C-3,5,6	
FLT PLN	NOTAM FILE CYYJ	
FIG	Kamloops 866-WXBRIEF (Toll free within Canada) or 866-541-4101 (Toll free within Canada & USA)	
PAD DATA	60' x 60' asphalt 100' x 100' fenced. Max length 50'.	
RCR	Director of plant svc 250-370-8371	
LIGHTING	RY (LO)	
COMM		
RADIO	Harbour rdo 122.2 1345-0530Z‡	
RCO	Pacific rdo 126.7 (FISE)	
MF/ATF	Harbour rdo 1345-0530Z‡ O/T Harbour tfc 122.2 5NM 2500 ASL within Victoria Harbour CZ (CAR 602.98)	
A/G	Ambulance dispatch 130.275	
PRO	Arr/dep: see A/D sketch. Aim jet exhaust away fr hosp at all times	

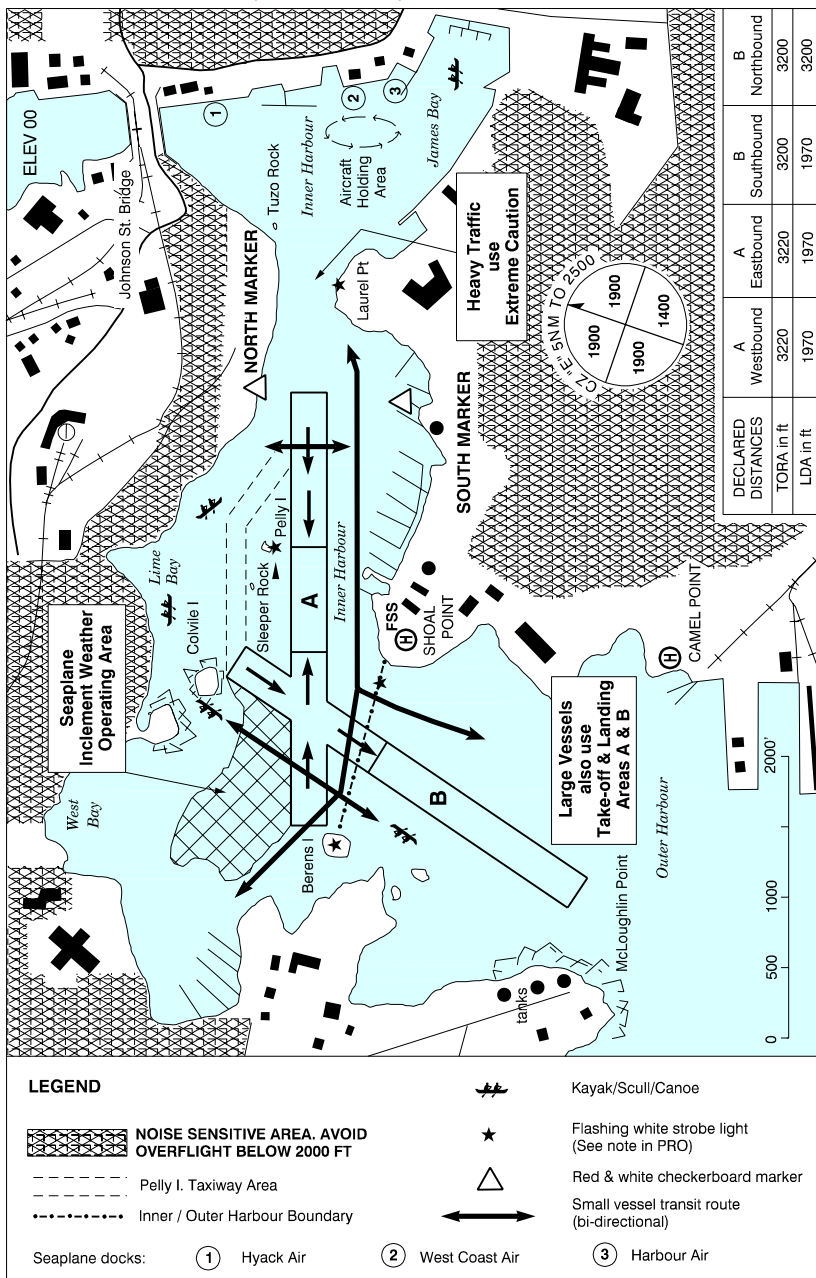
CANADA FLIGHT SUPPLEMENT / GPH 205

Effective 0901Z 20 November 2008 to 0901Z 15 January 2009

B988 AERODROME/FACILITY DIRECTORY

VICTORIA HARBOUR BC (water aerodrome)

CYW8



CANADA FLIGHT SUPPLEMENT / GPH 205

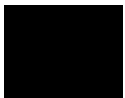
Effective 0901Z 20 November 2008 to 0901Z 15 January 2009

AERODROME/FACILITY DIRECTORY B989

VICTORIA HARBOUR BC (water aerodrome) (Cont'd)

CYWH

REF	N48 25 22 W123 23 15 Adj S 19°E UTC-8(7) Elev 00' VTA A5004 E-15 RCAP
OPR	TC 250-363-3578/380-8177/388-6275 Cert PPR (see restriction 1 in PRO)
PF	C-1,2,3,4,5,6
CUST	AOE/15 888-226-7277
FLT PLN	NOTAM FILE CYYJ
FIC	Kamloops 866-WXBRIEF (Toll free within Canada) or 866-541-4101 (Toll free within Canada & USA)
WX	METAR 14-05Z‡
PIK	Hyack Air main floor S wall, dur daylight hrs, airside access
SERVICES	For svcs use Victoria aprt seaplane base 14NM N.
S	5
A/D DATA	Tidal range 8', current 2 kt. Tkof & Ldg Area A: Brg 071°/251° 3220' Thld displ 1250' both ends. Tkof & Ldg Area B: Brg 015°/195° 3200' Thld displ 1230' N end.
COMM	
RADIO	Harbour rdo 122.2 1345-0530Z‡ (emerg only 250-953-1500)
RCO	Pacific rdo 126.7 (FISE)
MF/ATF	Harbour rdo 1345-0530Z‡ O/T tfc 122.2 5NM 2500 ASL (CAR 602.98)
A/G	Hyack Air 129.45
NAV	
NDB	VICTORIA YJ 200 (M) N48 38 38 W123 23 58 156° 13.7NM to A/D Unmonitored when Victoria Twr clsd.
VOR/DME	VICTORIA YYJ 113.7 Ch 84 N48 43 37 W123 29 04 (1968') 145° 19.2NM to A/D



CANADA FLIGHT SUPPLEMENT / GPH 205

Effective 0901Z 20 November 2008 to 0901Z 15 January 2009

B990 AERODROME/FACILITY DIRECTORY

VICTORIA HARBOUR BC (water aerodrome) (Cont'd)

CYWH

PRO

GENERAL: (Refer to VTPC and Aerodrome Sketch)

All of the following procedures limitations, and restrictions comprise the aviation components of the Port of Victoria Traffic Scheme (PVTS). All surface vessels operate with reference to the marine components of the PVTS. Considerations for noise abatement are found in procedure items 2, 3, 4, 6 and 7 and in restriction 4.

1. All arr/dep will be via the harbour entrance or the Gorge as depicted on VTPC. Aircraft call rdo 122.2 at 10NM out (fr the N report at Mount Doug), advs acft type, alt & intentions. Report on base leg for the harbour at Beacon Hill or Dock Yard. Ldg westbound, report over the Admirals. FSS will activate the strobes advising mariners of arr/dep acft.
2. No acft shall overfly the city of Victoria at alt below 2000' exc in transition for tkof & ldg.
3. Acft arr/dep via the Shoreline Route shall remain a horizontal distance of at least 2000' off shore.
4. Tkofs shall commence at the threshold of Tkof & Ldg Areas A & B. Wind, water and load conds permitting, pilots are to use Area B southbound as the primary tkof area. Pilots should operate landing/pulsating lgts immediately prior to tkof.
5. During strong south-easterly winds, south-eastbound tkofs are authorized within the Inclement Weather Operating Area. Commence tkof in West Bay and remain west of the Small Vessel Transit Route at Shoal Point. (See CAUTION).
6. Wind, water & load conds permitting, pilots are encouraged to land northbound in Area B or eastbound in Area A & plan ldg to avoid the use of reverse thrust.
7. Acft ldg in Area A westbound, cross Johnston St. Bridge at 500' or above and, commensurate with safety, remain east of Tuzo Rock crossing between Laurel Point and Songhees Point on final at the highest possible altitude for stabilized descent and landing.
8. a) Taxiing acft are vessels and must comply with both the Marine Collision Regulations and 'Right of Way-Aircraft Manoeuvring on Water'. CAR 602.20.
b) Taxiing acft should leave the tkof & ldg areas if required to avoid conflict with other acft or large vessels.
9. For dock space: Hyack Air 250-384-2411, Fax 250-384-2415.

RESTRICTIONS:

1. Pursuant to CAR 602.96(3)(d), PPR reqd from Harbour Airport Manager 250-363-3578, 250-380-8177 or page 250-388-6275 no. 1312.
2. Pursuant to CAR 602.96(3)(d), no step taxiing is permitted and taxi speed is 5 Kt maximum within Inner Harbour area.
3. Pursuant to CAR 602.96(3)(d), acft shall maintain a distance of at least 50 m (165') from surface vessels during tkof or ldg. For the purpose of this restriction take off means "from the start of the take off slide to an altitude of 150' ASL", landing means "descent from an altitude of 150' ASL to touchdown and off the step".
4. Pursuant to CAR 602.96(3)(d), unless otherwise authorized by Airport Manager, no floatplane tkofs or ldgs before 0700 lcl.
5. Pursuant to CAR 602.96(3)(d), Pelly I.
Twy area use not auth when white horizontal tide markers are visible (located on concrete base of Pelly I. and Tuzo Rk. marine lights).
6. Pursuant to CAR 602.96(3)(d), westbound tkofs and landings in tkof & ldg area A shall not commence until west of a line joining the N and S markers.
7. Pursuant to CAR 602.96(3)(d), eastbound landings in tkof & ldg area shall be completed and acft at or below 5 kt before crossing east of a line joining the N and S markers.
8. Pursuant to CAR 602.96(3)(d), no Ab Initio or acft training

CANADA FLIGHT SUPPLEMENT / GPH 205

Effective 0901Z 20 November 2008 to 0901Z 15 January 2009

AERODROME/FACILITY DIRECTORY B991

VICTORIA HARBOUR BC (water aerodrome) (Cont'd)

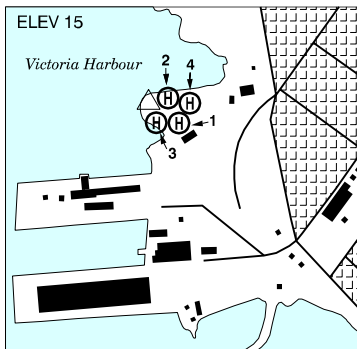
CYWH

PRO (Cont'd)	<p>ATS REQUIREMENTS:</p> <p>All VFR acft arriving, departing or transiting the Vancouver or Victoria Tower Class C or D airspace require a transponder code.</p> <ul style="list-style-type: none"> - All acft departing Vancouver or Victoria Intl (including Water Aerodrome) call Vancouver ACC at 888-987-2633 (888-YVR-CODE) or 604-586-4595 for code assignment at least 30 min prior to flight or file a VFR Flight Plan/Flight Itinerary. - All acft arriving Vancouver, Victoria Intl (including Water Aerodrome) or transiting Vancouver or Victoria Control Zones obtain a code from one of the following ATS units: Vancouver Harbour, Nanaimo, Victoria Harbour, Boundary Bay, Langley, Abbotsford or Pitt Meadows or call Vancouver ACC at 888-987-2633 (888-YVR-CODE) or 604-586-4595. -All acft arriving Victoria Intl from a non NAV CANADA site call Vancouver ACC at 888-987-2633 (888-YVR-CODE) or 604-586-4595 for code assignment at least 30 minutes prior to flight or file a VFR Flight Plan/ Flight Itinerary.
CAUTION	<p>Extv heli activity vic of Camel Point. Helicopter/floatplane IFR approaches S of Beacon Hill. Extv marine tfc including ferries, barges, water taxis, pleasure craft & kayaks. Shallow areas may restrict use of the "seaplane inclement weather operation area", pilots should consult tide tables to ensure that a min depth of 1.8 meters of water is avbl prior to using this area. Bldg spire 274 ASL 0.6NM E of area A.</p>

VICTORIA HARBOUR (CAMEL POINT) BC (Heli)

CBF7

REF	N48 25 05 W123 23 16 Adj 19°E UTC-8(7) Elev 15' VTA CAP RCAP
OPR	Pacific Heliport Services 250-386-7676 Cert Ldg fees PPR (see Restriction 1 in PRO).
PF	A-1 C-2,3,4,5,6
FLT PLN	NOTAM FILE CYYJ
FIC	Kamloops 866-WXBRIEF (Toll free within Canada) or 866-541-4101 (Toll free within Canada & USA)
ACC	Vancouver IFR 604-586-4590/4591 or 800-668-1333; IFR tng fts PPR ctc 604-586-4592 or 800-668-1333.



SERVICES	
FUEL	JA (PPR & Emerg only); ctc opr
S	4 (ltd)
PAD DATA	<p>Arr/dep area 110' dia concrete/asphalt 20,500 lbs. 4 pads to the E.</p> <ul style="list-style-type: none"> Pad-1: 53' dia asphalt 11,400 lbs Pad-2: 53' dia asphalt 11,400 lbs Pad-3: 73' dia concrete/asphalt 20,500 lbs Pad-4: 53' dia asphalt 11,400 lbs. Day use- hover, taxi & prkg only. Night use- prkg only.
APRON	Prkg fees; ctc opr
RCR	Opr
LIGHTING	RY

CANADA FLIGHT SUPPLEMENT / GPH 205

Effective 0901Z 20 November 2008 to 0901Z 15 January 2009

B992 AERODROME/FACILITY DIRECTORY

VICTORIA HARBOUR (CAMEL POINT) BC (Heli) (Cont'd)

CBF7

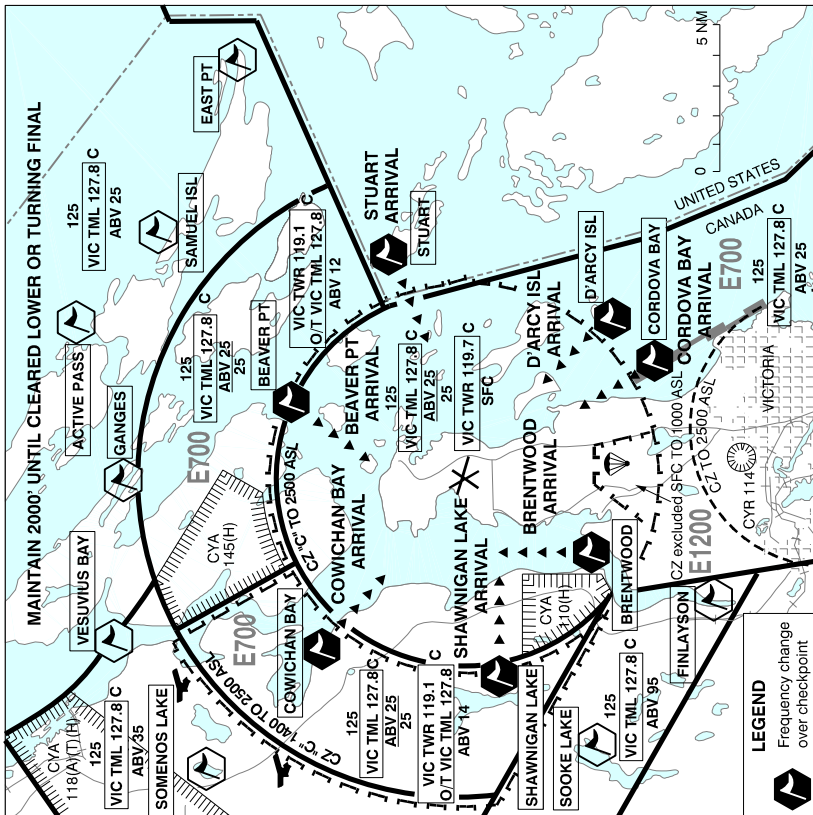
COMM	<p>RADIO Harbour rdo 122.2 1345-0530Z‡ (emerg only 250-953-1500)</p> <p>RCO Pacific rdo 126.7 (FISE)</p> <p>MF/ATF Harbour rdo 1345-0530Z‡ O/T Harbour tfc 122.2 5NM 2500 ASL within Victoria Harbour CZ (CAR 602.98)</p> <p>ARR Victoria Tml 133.85 308.4</p> <p>DEP Victoria Tml 133.85 308.4</p>
PRO	<p>Arr/dep over water (see Victoria Harbour VTPC). Procedures for crossing the southern Strait of Georgia within Tml Class C airspace refer to Vancouver Intl, VTPC for Crossing the Southern Strait of Georgia. Pads 3 & 4 preferred for itinerant use. Pads 1 & 2 used for scheduled service. Restrictions: 1.Pursuant to CAR 602.96(3)(d), prior permission required from Victoria Harbour (Camel Point) Heliport Manager 251-386-7676, 604-688-4646 or 604-273-4688. 2.Pursuant to CAR 602.96(3)(d), unless otherwise authorized by Heliport Manager, to tkofs or ldgs outside of normal staffed hours of operation. Please call above phone numbers for up to date information on hours of operation.</p>

VICTORIA HARBOUR (SHOAL POINT) BC (Heli)

CBZ7

REF	N48 25 24 W123 23 24 Adj 19°E UTC-8(7) Elev 10' VTA
OPR	Canadian Coast Guard 250-480-2600 Cert PPR
PF	B-1 C-2,3,4,5,6
FLT PLN	NOTAM FILE CYYJ
FIC	Kamloops 866-WXBRIEF (Toll free within Canada) or 866-541-4101 (Toll free within Canada & USA)
PAD DATA	86' x 86' 114' x 114'
RCR	Opr
COMM	<p>RADIO Harbour rdo 122.2 1345-0530Z‡ (emerg only 250-953-1500)</p> <p>RCO Pacific rdo 126.7 (FISE)</p> <p>MF/ATF Harbour rdo 1345-0530Z‡ O/T Harbour tfc 122.2 5NM 2500 ASL within Victoria Harbour CZ (CAR 602.98)</p> <p>A/G Canadian Coast Guard Shoal Point Ch 82 157.125 FM</p>
PRO	<p>Arr/dep over water (see Victoria Harbour VTPC). Procedures for crossing the southern Strait of Georgia within Tml Class C airspace refer to Vancouver Intl, VTPC for Crossing the Southern Strait of Georgia.</p>

VICTORIA INTL VFR TERMINAL PROCEDURES CHARTS



VICTORIA ARRIVALS				
TML	ATIS	TWR		GND
		OUTER	INNER	
127.8	118.8 (O/T) LWIS (WIND & ALTIMETER) 118.8)	119.1	119.7	121.9
		O/T Kamloops rdo 119.7 (7NM)		

PROCEDURES:

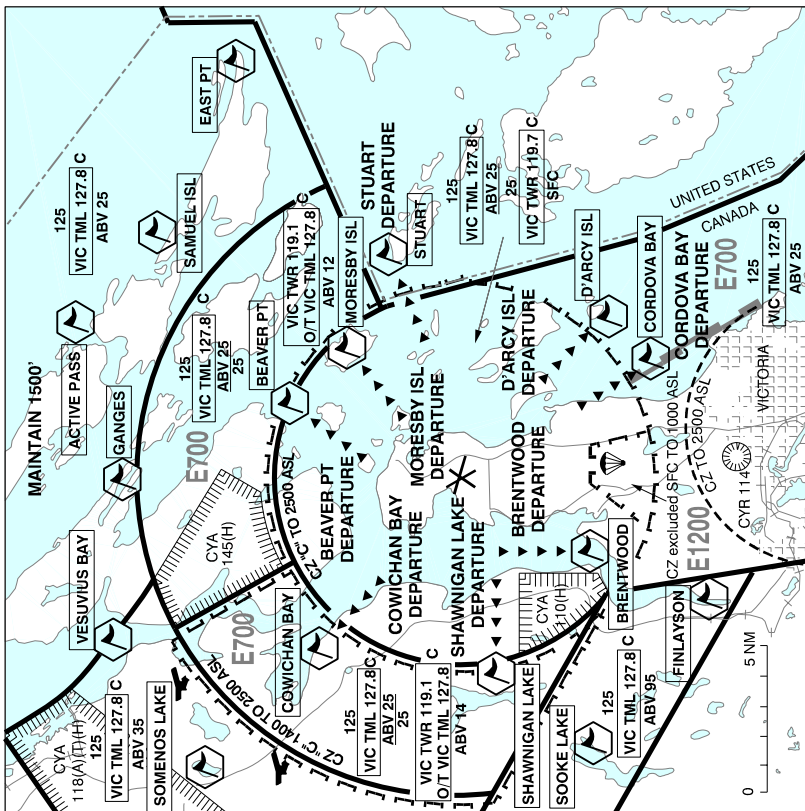
- Initial contact 119.1.
- Fly the assigned arrival route.
- **Maintain 2000' until cleared lower or turning final.**
- Contact 119.7 at the arrival point for landing instructions.
- If unable contact on 119.7 at the arrival point, maintain 2000' and proceed to final approach.
- Procedures not authorized outside of twr hours of operation.

CANADA FLIGHT SUPPLEMENT / GPH 205

Effective 0901Z 20 November 2008 to 0901Z 15 January 2009

B994 AERODROME/FACILITY DIRECTORY

VICTORIA INTL VFR TERMINAL PROCEDURES CHARTS (Cont'd)



VICTORIA DEPARTURES

● ATIS	● CLNC DEL	● GND	● TWR		TML
			INNER	OUTER	
118.8 (O/T LWS (WIND & ALTIMETER) 118.8)	126.4	121.9	119.7	119.1	127.8
		O/T Kamloops rdo 119.7 (7NM)			

PROCEDURES:

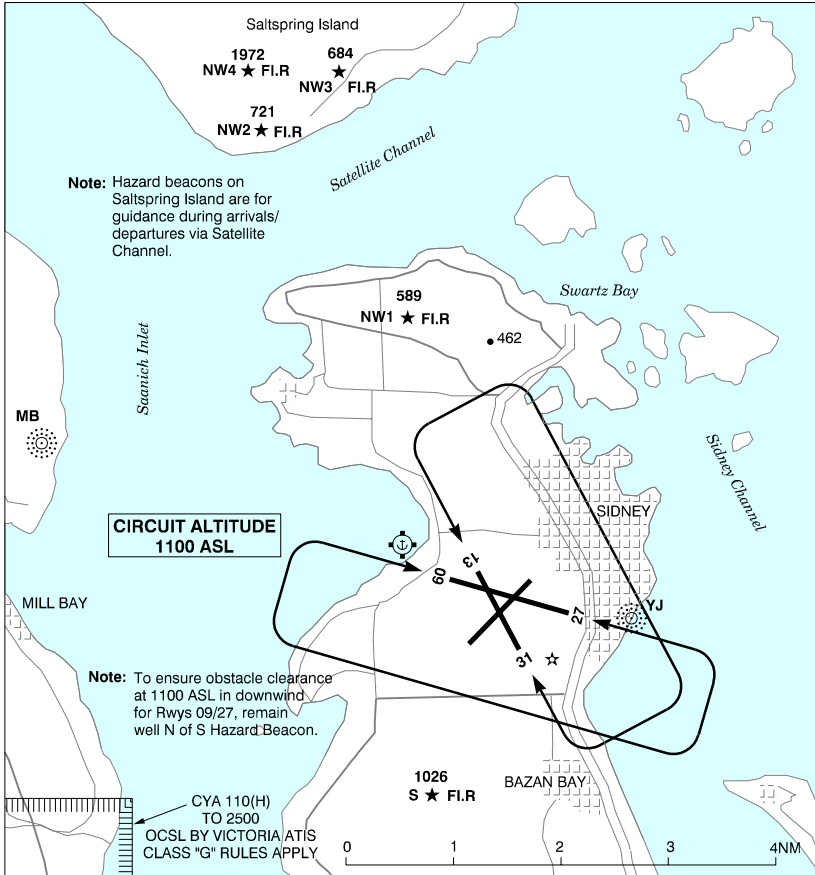
- Fly direct the assigned departure point.
 - **Maintain 1500'**.
 - Contact 119.1 leaving 1000'.
-
- Procedures not authorized outside of twr hours of operation.

CANADA FLIGHT SUPPLEMENT / GPH 205

Effective 0901Z 20 November 2008 to 0901Z 15 January 2009

AERODROME/FACILITY DIRECTORY B995

VICTORIA INTL VFR TERMINAL PROCEDURES CHART - NIGHT CIRCUIT PROCEDURES

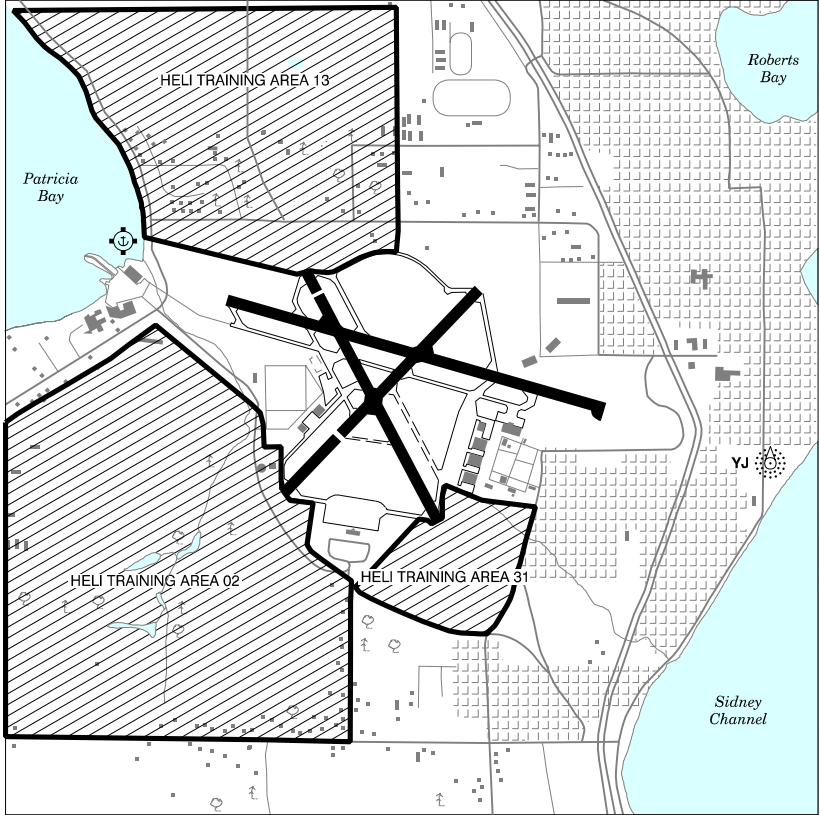


CANADA FLIGHT SUPPLEMENT / GPH 205

Effective 0901Z 20 November 2008 to 0901Z 15 January 2009

B996 AERODROME/FACILITY DIRECTORY

VICTORIA INTL VFR TERMINAL PROCEDURES CHART - TRAINING AREAS



CANADA FLIGHT SUPPLEMENT / GPH 205

Effective 0901Z 20 November 2008 to 0901Z 15 January 2009

B998 AERODROME/FACILITY DIRECTORY

VICTORIA INTL BC (Cont'd)

CYYJ

RWY DATA	Rwy 09(087°)/27(267°) 7000x200 asphalt Rwy 02(025°)/20(205°) 5026x200 asphalt Thld 02 displ 1421'. Rwy 13(133°)/31(313°) 5003x200 asphalt Thld 13 displ 427'.
TWY	Twy M rstd to 12,500 lbs; twy C rstd to 50,000 lbs.
APRON	Apron II rstd to 50,000 lbs. Apron IV restricted to scheduled commercial ffc only. Exceptions require prior approval of aprt operator.
RCR	Twr 250-655-2866 CRFI, Rwy 02/20 restricted to max 65,000 lbs for tkof and ldg. No weight restriction for taxiing acft rwy 02/20. PLR/PCN
LIGHTING	02-(TE ME), 20-(TE ME), 09-AO(TE HI) P2, 27-AE (non-std 1900') (TE HI), 13-AO(TE ME) P2, 31-(TE ME) V2 PAPI rwy 13 OCL to 2NM. Dur hrs of twr closure, one ILS will remain on. ARCAL - 119.7 type K 08-14Z±. PAPI rwy 13 & VASIS rwy 31 on all rwy lgt settings.
COMM	
RCO	Kamloops rdo 119.7 (RAAS) 08-14Z± Pacific rdo 122.375 (FISE) 126.7 (bcst)
ATIS	118.8 14-08Z± o/t LWIS (wind & altimeter) 118.8
CLNC DEL	126.4 14-08Z± unless closed by ATIS
GND	121.9 361.4 14-08Z± O/T IFR clnc prior to tkof ctc Kamloops rdo 119.7
TWR	119.7 inner 119.1 outer unless closed by ATIS 239.6 (E) 14-08Z± (emerg only 250-655-2866)
MF	Kamloops rdo 119.7 08-14Z± 7NM 2500 ASL (CAR 602.98)
TML	127.8
ARR	125.95 308.4
DEP	133.85 308.4
MIL	443 Sqn-call Stinger ops 349.3
NAV	
VOT	115.7 Unmonitored when twr clsd.
NDB	ACTIVE PASS AP 378 (L) N48 52 26 W123 17 24 183° 14.7NM to A/D MILL BAY MB 293 (L) N48 40 15 W123 32 13 087° 4.0NM to A/D Unmonitored when twr clsd. YJ 200 (M) N48 38 39 W123 23 58 267° 0.5NM to A/D Unmonitored when twr clsd.
VOR/DME	YYJ 113.7 Ch 84 N48 43 37 W123 29 04 (1968') 133° 5.3NM to A/D
DME	IKH 108.7 Ch 24 N48 39 10 W123 26 08 (60') at A/D IYJ 108.7 Ch 24 N48 39 10 W123 26 08 (60') at A/D
ILS	IKH 108.7 (Rwy 09) RVR; IYJ 108.7 (Rwy 27) RVR

CANADA FLIGHT SUPPLEMENT / GPH 205

Effective 0901Z 20 November 2008 to 0901Z 15 January 2009

AERODROME/FACILITY DIRECTORY B999

VICTORIA INTL BC (Cont'd)

CCYYJ

PRO	<p>PPR for non-transponder ops within Victoria Twr class "C" airspace 250-655-2866. VFR dep acft ctc clnc del unless closed by ATIS. Rgt hand circuits rwy 09, 20 & 31 (CAR 602.96). Ngt ops rwy 02/20 not auth exc for tkof on rwy 02. Rwy 02/20 restricted to max 65,000 lbs for tkof and ldg. No weight restriction for taxiing acft rwy 02/20 south of rwy 13.</p> <p>VFR ARR/DEP ROUTES</p> <p>ARRIVALS: Beaver Point, Brentwood, Cordova, Cowichan, D'arcy Island, Shawnigan Lake, Stuart Island</p> <p>ALL ROUTES - Obtain ATIS message Contact outer twr 119.1 Squawk assigned transponder code Fly assigned routing Maintain 2000' until cleared lower or turning final Contact 119.7 at arrival point for landing instructions</p> <p>NOTE: If unable contact on 119.7 at arrival point, proceed to final approach and maintain 2000'</p> <p>DEPARTURES: Beaver Point, Brentwood, Cordova, Cowichan, D'arcy Island, Moresby Island, Shawnigan Lake, Stuart Island</p> <p>ALL ROUTES - Fly direct to assigned departure point Maintain 1500' until cleared higher Contact 119.1 leaving 1000'</p> <p>VFR OVERFLIGHT ROUTES (FOR NOISE MITIGATION) Routes for Over-flying the Saanich Peninsula: Victoria Tower will assign one of three possible southbound routes at 2500 feet for transiting the Saanich Peninsula: Route 1: West Transit – Swartz Bay direct Mt Work. Route 2: Prospect Transit – Swartz Bay direct Prospect Lake. Route 3: Highway Transit – Swartz Bay direct threshold RWY 27 follow Patricia Bay Highway.</p> <p>NOISE ABATEMENT PROCEDURES: Restrictions: Consistent with limiting factors, all acft shall use rwy 09/27 fr 04-15Z±. Limiting factors: Physical cond of sfc (dry, wet, icy); max effective crosswind component 15 knots; max effective tailwind component 5 knots; visual restrictions due to the posn of sun. – Lcl turbo-jet tng fits not permitted fr 06-15Z±. Procedures for crossing the southern Strait of Georgia within Tml Class C airspace refer to Vancouver Intl, VTPC for Crossing the Southern Strait of Georgia. Taxi route for arriving wide-bodied acft is via twy E, twy G, rwy 02/20, twy B. Taxi route for departing wide-bodied acft is via twy B, rwy 02/20, twy G, twy E. Heli tng areas avbl 16-04Z± dly & are active when bcst on ATIS. PPR only. Not above 500 AGL unless advs by ATC.</p> <p>AIRSPACE: CARS Part VII operators must ensure routes flown at night meet minimum altitude requirements for commercial operations.</p> <p>ATS REQUIREMENTS: All VFR acft arriving, departing or transiting the Vancouver or Victoria Tower Class C or D airspace require a transponder code. - All acft departing Vancouver or Victoria Intl (including Water Aerodrome) call Vancouver ACC at 888-987-2633 (888-YVR-CODE) or 604-586-4595 for code assignment at least 30 min prior to flight or file a VFR Flight Plan/Flight Itinerary. - All acft arriving Vancouver, Victoria Intl (including Water Aerodrome) or transiting Vancouver or Victoria Control Zones obtain a code from one of the following ATS units: Vancouver Harbour, Nanaimo, Victoria Harbour, Boundary Bay, Langley, Abbotsford or Pitt Meadows or call Vancouver ACC at 888-987-2633 (888-YVR-CODE) or 604-586-4595. -All acft arriving Victoria Intl from a non NAV CANADA site call Vancouver ACC at 888-987-2633 (888-YVR-CODE) or 604-586-4595 for code assignment at least 30 minutes prior to flight or file a VFR Flight Plan/ Flight Itinerary.</p>
CAUTION	<p>Hwy crosses apch to rwy 13. Aprx 750' fr thld mobile obst to 30' above thld elev. Only pilots familiar with local terrain should use this apch dur hrs of darkness.</p>

CANADA FLIGHT SUPPLEMENT / GPH 205

Effective 0901Z 20 November 2008 to 0901Z 15 January 2009

B1000 AERODROME/FACILITY DIRECTORY

VICTORIA TERMINAL (emerg only 604-586-4500)

Abbotsford 132.7 290.8

VICTORIAVILLE QC

CSR3

REF	N46 06 46 W71 55 44 17°W UTC-5(4) Elev 486' A5002 F-21 LO6 LO7 LO8 CAP	
OPR	L'Association des pilotes des Bois-Francis Inc 819-752-6560, 819-352-1165, 819-350-3433 Reg	
PF	A-1,2 (ltd hrs) C-3,4,5,6	
FLT PLN	(bil) NOTAM FILE CYSC	
FIC	Québec 866-GOMÉTÉO or 866-WXBRIEF (Toll free within Canada) or 866-541-4105 (Toll free within Canada & USA)	
ACC	Montréal 800-633-1353	
SERVICES	Call out chg may be levied for one or more svcs	
FUEL	100LL, JA-1 13-22Z± Oct 2-Apr 30; (DT 12-22Z) May 1-Oct 1; O/T 819-362-2146/819-352-1165	
OIL	15W50	
S	4,5,6	
RWY DATA	Rwy 06(061°)/24(241°) 4000x75 asphalt	
RCR	Opr 14-01Z (DT 13-01Z) Ltd win maint	
LIGHTING	06-(TE ME), 24-(TE ME) ARCAL-123.0 type J	
COMM		
ATF	UNICOM ltd hrs O/T tfc 123.0 5NM 3500 ASL	
NAV		
NDB	F8 384 (L) N46 06 38 W71 55 37 at A/D	
PRO	Pilots are encouraged to broadcast intentions on 123.0 well before overflying the rwy. It is recommended to helicopters to aqch on the rwy centreline before proceeding to the designated landing pad to prevent overflying the paradrop target.	
CAUTION	Heavy para-drop activities, 1130-0400Z±, May 1-Oct 31 up to 16,000 ASL. Possible deer on rwy.	

VICTOR MINE ON

CVM2

REF	N52 49 58 W83 55 43 0.5N 10°W UTC-5(4) Elev 291' LO3 A5018 E-18 RCAP	
OPR	De Beers Canada, Inc. 416-645-3888 Ext 5115 Reg PPR	
FLT PLN	NOTAM FILE CYAT	
FIC	London 866-WXBRIEF (Toll free within Canada) or 866-541-4104 (Toll free within Canada & USA)	
RWY DATA	Rwy 10(098°)/28(278°) 3250x148 gravel	
RCR	Opr PLR/PCN	
LIGHTING	10-(TE ME), 28-(TE ME) ARCAL 123.2 type K	

CANADA FLIGHT SUPPLEMENT / GPH 205

Effective 0901Z 20 November 2008 to 0901Z 15 January 2009

AERODROME/FACILITY DIRECTORY B1001

VICTOR MINE ON (Cont'd)

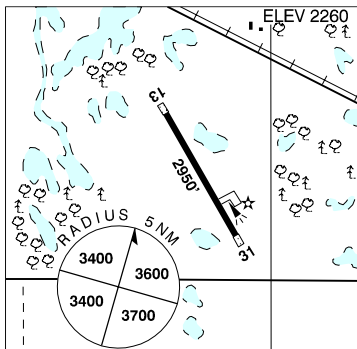
CEM2

COMM	
ATF	UNICOM ltd hrs O/T tfc 123.2 5NM 3300 ASL
PRO	Ctc opr prior to flight to ensure altimeter setting avbl upon arr.
CAUTION	Blasting 1.4 NM SE A/D sfc to 1500' AGL 1500-2300Z± daily.

VIKING AB

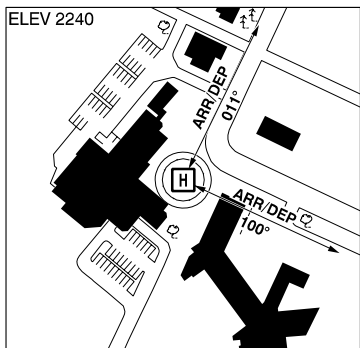
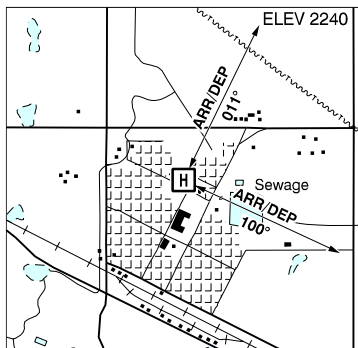
CEE8

REF	N53 06 W111 52 3NW 16°E UTC-7(6) Elev 2260' A5015 E-16
OPR	Town 780-336-3466 Reg
PF	A-1 C-2,3,4,5,6
FLT PLN	NOTAM FILE CYLL FIG Edmonton 866-WXBRIEF (Toll free within Canada) or 866-541-4102 (Toll free within Canada & USA)
RWY DATA	Rwy 13(137°)/31(317°) 2950x75 asphalt RCR Opr Ltd maint
LIGHTING	13-(TE ME), 31-(TE ME) ARCAL-123.2 type K
COMM	
ATF	tfc 123.2 5NM 5300 ASL



VIKING HEALTH CENTRE AB (Heli)

CVK2



REF	N53 06 00 W111 46 37 Adj N 15°E UTC-7(6) Elev 2240' A5015
OPR	Viking Health Centre 780-336-4786 Cert PPR
PF	A-1,2,4 C-,3,5
FLT PLN	NOTAM FILE CYEG FIG Edmonton 866-WXBRIEF (Toll free within Canada) or 866-541-4102 (Toll free within Canada & USA) ACC Edmonton IFR 888-358-7526 or 780-890-8304/8305
PAD DATA	39' dia concrete 64' dia FATO 85' dia safety area RCR Opr
LIGHTING	RY(ME)

CANADA FLIGHT SUPPLEMENT / GPH 205

Effective 0901Z 20 November 2008 to 0901Z 15 January 2009

B1002 AERODROME/FACILITY DIRECTORY

VIKING HEALTH CENTRE AB (Heli) (Cont'd)

CVK2

COMM	
ATF	tfc 123.2 5NM 5300 ASL
PRO	N arr/dep path 011° fr heli, E arr/dep path 100° fr heli.
CAUTION	P-lines N of heli.

VIKING (SOUTH) AB

CVS2

REF	N53 01 32 W111 56 55 7.4SW 16°E UTC-7(6) Elev 2242' A5015	
OPR	Darren Winczura 780-336-2207 Reg	
FLT PLN	NOTAM FILE CYLL	
FIC	Edmonton 866-WXBRIEF (Toll free within Canada) or 866-541-4102 (Toll free within Canada & USA)	
ACC	Edmonton IFR 888-358-7526 or 780-890-8304/8305	
RWY DATA	Rwy 10/28 2900x90 turf	
RCR	Opr Ltd win maint	
LIGHTING	10-(TE LO), 28 RR, only 1200' lgtd	
COMM		
ATF	tfc 123.2 5NM 5300 MSL	
CAUTION	Rwy can be soft when wet. Fenced perimeter around rwy. Watch for wildlife.	

VILLENEUVE AB — See EDMONTON / VILLENEUVE

VILLENEUVE AB — See EDMONTON / VILLENEUVE (ROSE FIELD)

VIRDEN (GABRIELLE FARM) MB

CKR7

REF	N49 47 05 W100 57 22 4S 8°E UTC-6(5) Elev 1440' aprx A5007 E-16	
OPR	D. Gabrielle 204-748-3917 Reg	
PF	B-1 C-2,3,4,5,6	
FLT PLN	NOTAM FILE CYBR	
FIC	Winnipeg 866-WXBRIEF (Toll free within Canada) or 866-541-4103 (Toll free within Canada & USA)	
RWY DATA	Rwy 08(082°)/26(262°) 2665x70 turf/snow	
RCR	Opr Rwy soft dur spring thaw.	
COMM		
ATF	Virden Gabrielle tfc 123.0 5NM 4500 ASL	

CANADA FLIGHT SUPPLEMENT / GPH 205

Effective 0901Z 20 November 2008 to 0901Z 15 January 2009

AERODROME/FACILITY DIRECTORY B1003

VIRDEN / R.J. (BOB) ANDREW FIELD REGIONAL MB

CYVD

REF	N49 52 42 W100 55 06 1N 8°E UTC-6(5) Elev 1454' A5007 E-16 LO4 CAP	
OPR	Town of Virden 204-748-2440 Reg	
PF	C-1,2,3,4,5	
FLT PLN	NOTAM FILE CYBR FIC Winnipeg 866-WXBRIEF (Toll free within Canada) or 866-541-4103 (Toll free within Canada & USA)	
SERVICES		
FUEL	100LL 204-748-3818/5600/7306/7989 or 204-851-0087	
S	4,5,6	
RWY DATA	Rwy 08(082°)/26(262°) 4320x75 asphalt	
RCR	Opr Ltd win maint	
LIGHTING	08-(TE LO), 26-(TE LO) SS-SR	
COMM		
ATF	tfc 123.0 5NM 4500 ASL	

VIRDEN (WEST) MB

CJZ5

REF	N49 53 W101 04 6NW 8°E UTC-6(5) Elev 1510' A5007 E-16	
OPR	Virden Aviation Ltd 204-748-2349 Reg PPR	
PF	B-1,2 D-3,4,5,6	
FLT PLN	NOTAM FILE CYBR FIC Winnipeg 866-WXBRIEF (Toll free within Canada) or 866-541-4103 (Toll free within Canada & USA)	
SERVICES		
FUEL	100LL	
OIL	All	
S	1,2,3	
RWY DATA	Rwy 13(128°)/31(308°) 2050x115 clay/gravel	
RCR	Opr Ltd win maint, rwy soft when wet.	
LIGHTING	13-(TE LO), 31-(TE LO)	
COMM		
ATF	UNICOM ltd hrs O/T tfc 123.0 5NM 4600 ASL	
CAUTION	Low flying agricultural ops & tng at & in vic of A/D.	

VOLK ON — See TOTTENHAM / VOLK

CANADA FLIGHT SUPPLEMENT / GPH 205

Effective 0901Z 20 November 2008 to 0901Z 15 January 2009

B1004 AERODROME/FACILITY DIRECTORY

VULCAN AB

CFX6

REF	N50 24 17 W113 17 00 Adj W 16°E UTC-7(6) Elev 3437' A5005 E-15 E-16	
OPR	Town & County 403-485-2417/2592 Reg	
PF	B-1 D-2,3,5	
FLT PLN	NOTAM FILE CYBW FIC Edmonton 866-WXBRIEF (Toll free within Canada) or 866-541-4102 (Toll free within Canada & USA)	
SERVICES		
FUEL	100	
OIL	65, 80	
RWY DATA	Rwy 16/34 2950x75 asphalt Rwy 05/23 2100x135 turf	
RCR	Opr Ltd maint	
LIGHTING	16-(TE ME), 34-(TE ME) ARCAL-122.8 type K	
COMM		
ATF	UNICOM ltd hrs O/T tfc 122.8 5NM 6500 ASL	
NAV		
NDB	Z5 274 (L) N50 23 53 W113 16 56 337° 0.4NM to A/D Pvt Unmonitored	
DME	Z5 108.8 (M) Ch 25 N50 23 53 W113 16 54 (3455') 333° 0.3NM to A/D Pvt Unmonitored	
PRO	Rgt hand circuits rwy 23 (CAR 602.96).	

VULCAN (HOSP) AB (Heli)

CVH7

REF	N50 23 45 W113 15 32 16°E UTC-7(6) Elev 3451' A5005 RCAP	
OPR	Calgary Health Region 403-485-3333 Cert PPR	
FLT PLN	NOTAM FILE CYBW FIC Edmonton 866-WXBRIEF (Toll free within Canada) or 866-541-4102 (Toll free within Canada & USA)	
PAD DATA	86' dia concrete, safety area 115' dia	
LIGHTING	Green(LO) PNR	
COMM	unicom ltd hours O/T tfc 122.8 5NM 6500 ASL	
PRO	Arr/dep paths 253° from pad & 118° from pad.	