

# CANADA FLIGHT SUPPLEMENT / GPH 205

Effective 0901Z 20 November 2008 to 0901Z 15 January 2009

AERODROME/FACILITY DIRECTORY B957

## ULUKHAKTOK / HOLMAN NT

CYHI

<b>REF</b>	N70 45 46 W117 48 22 2N 32°E GV150°E UTC-7(6) Elev 117' A5041 C-10 LO5 CAP	
<b>OPR</b>	Govt of Northwest Territories (Inuvik) 867-977-2658 Emerg/Incident rpt ctc Govt of Northwest Territories 877-989-1400 Cert Ltd hrs	
<b>PF</b>	A-1 C-2,3,4,5	
<b>FLT PLN</b>	NOTAM FILE CYHI	
<b>FIC</b>	North Bay 866-WXBRIEF (Toll free within Canada) or 866-541-4109 (Toll free within Canada & USA)	
<b>ACC</b>	Edmonton IFR 888-358-7526 or 780-890-8304/8305	
<b>CARS</b>	867-396-3141 Ltd hrs (see COMM).	
<b>WX</b>	METAR dur CARS hrs ops. TAF H24, issue times: 17, 19Z (DT 16, 19Z) Mon-Sat, 17Z± Sun.	
<b>SERVICES</b>	Call out chg may be levied for svcs	
<b>FUEL</b>	JA Boaks Service 867-396-3191/3171 Fax 867-396-3191	
<b>RWY DATA</b>	Rwy 06T(062°T)/24T(242°T) 4300x100 gravel	
<b>RCR</b>	Hamlet 867-396-3511 win maint 15-24Z± Mon-Fri exc hols, O/T 1 hr PNR 867-396-4026/3912/8008 403-462-1526. Call out chg may be levied. PLR/PCN	
<b>LIGHTING</b>	06T-AS(TE ME) P1, 24T-AS(TE ME) P1 ARCAL-122.1 type K. PAPI avbl only dur CARS hrs ops.	
<b>COMM</b>		
<b>MF</b>	apt rdo ltd hrs O/T tfc 122.1 5NM 3100 ASL (CAR 602.98)	
<b>APRT RDO</b>	122.1 (V) 15-01Z± Mon-Sat, 15-20Z± Sun, exc hols	
<b>NAV</b>		
<b>NDB</b>	HI 361 (M) N70 45 44 W117 47 24 at A/D Unmonitored when CARS clsd	
<b>PRO</b>	Pilots ctc CARS prior to dep IFR enroute to ensure Holman NDB is oprg normally.	

## UMIUJAQ QC

CYMU

<b>REF</b>	N56 32 10 W76 31 06 20°W UTC-5(4) Elev 250' A5026 E-18 D-14 LO5 CAP	
<b>OPR</b>	Administration Régionale Kativik 819-964-2968 14-22Z± Mon-Fri O/T 819-964-3434 Ext 154 Fax 819-964-2462 Cert	
<b>PF</b>	A-1 C-2,4,5	
<b>FLT PLN</b>	NOTAM FILE CYGW	
<b>FIC</b>	Québec 866-GOMÉTÉO or 866-WXBRIEF (Toll free within Canada) or 866-541-4105 (Toll free within Canada & USA)	
<b>ACC</b>	Montréal 800-633-1353	
<b>CARS</b>	819-331-7396 ltd hrs (see COMM)	
<b>WX</b>	METAR dur CARS hrs.	

# CANADA FLIGHT SUPPLEMENT / GPH 205

Effective 0901Z 20 November 2008 to 0901Z 15 January 2009

B958 AERODROME/FACILITY DIRECTORY

## UMIUJAQ QC (Cont'd)

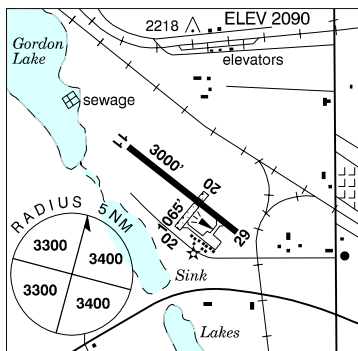
CYMU

<b>RWY DATA</b>	Rwy 03(027°)/21(207°) 3521x100 gravel Rwy 03 down 0.5% first 590', up 0.5% next 1080'. Rwy 21 down 1.0% first 690', up 0.4% next 1150'.
<b>RCR</b>	Opr
<b>LIGHTING</b>	03-AS(TE ME), 21-AS(TE ME) ARCAL-122.1 type J
<b>COMM</b>	
<b>MF/ATF</b>	aprt rdo (English only) ltd hrs O/T tfc 122.1 5NM 3300 ASL (CAR 602.98)
<b>APRT RDO</b>	122.1 (V) 1230-2230Z±
<b>NAV</b>	
<b>NDB</b>	YMU 230 (L) N56 32 13 W76 31 23 at A/D Unmonitored when CARS clsd
<b>PRO</b>	Rgt hand circuits rwy 21 (CAR 602.96).
<b>CAUTION</b>	<b>Wildlife:</b> Possibility of caribou on rwy Nov-May. <b>Night ops:</b> Only pilots familiar with local area should use this A/D dur hrs of darkness due to sur terrain & optical illusions. <b>Turbulence:</b> Severe turbulence may be encountered when wind exceeds 20 kt.

## UNITY SK

CKE8

<b>REF</b>	N52 26 45 W109 11 07 Adj W 15°E UTC-6 Elev 2090' A5015 E-16
<b>OPR</b>	Town 306-228-2621 Reg
<b>PF</b>	A-1,6 C-2,3,4,5
<b>FLT PLN</b>	NOTAM FILE CYYN
<b>FIC</b>	Edmonton 866-WXBRIEF (Toll free within Canada) or 866-541-4102 (Toll free within Canada & USA)
<b>SERVICES</b>	
<b>FUEL</b>	100LL
<b>RWY DATA</b>	Rwy 11(112°)/29(292°) 3000x75 asphalt Rwy 02(023°)/20(203°) 1065x60 turf
<b>RCR</b>	Opr No win maint
<b>LIGHTING</b>	11-(TE LO), 29-(TE LO)
<b>COMM</b>	
<b>ATF</b>	UNICOM ltd hrs O/T tfc 122.8 5NM 5100 ASL
<b>CAUTION</b>	Fence 100' fr thld 20.



# CANADA FLIGHT SUPPLEMENT / GPH 205

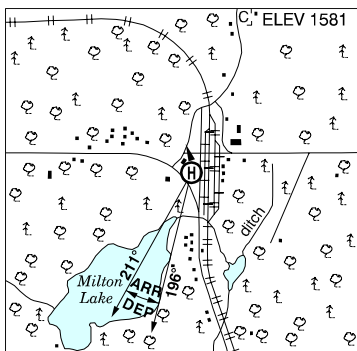
Effective 0901Z 20 November 2008 to 0901Z 15 January 2009

AERODROME/FACILITY DIRECTORY B959

## UPSALA ON (Heli)

CKL8

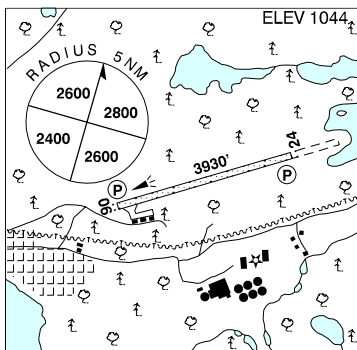
<b>REF</b>	N49 03 01 W90 28 09 0.5N 2°W UTC-5(4) Elev 1581' A5001 A5008
<b>OPR</b>	Ontario Ministry of Health 807-986-2277 Reg PPR
<b>PF</b>	C-1,2,5
<b>FLT PLN</b>	NOTAM FILE CYQT
<b>FIC</b>	Winnipeg 866-WXBRIEF (Toll free within Canada) or 866-541-4103 (Toll free within Canada & USA)
<b>PAD DATA</b>	85' x 85' Rstd max heli length 56.6'
<b>LIGHTING</b>	RY PNR
<b>COMM</b>	
<b>ATF</b>	tfc 122.8 5NM 4600 ASL
<b>PRO</b>	Arr/dep btwn 196°-211° fr heli.



## URANIUM CITY SK

CYBE

<b>REF</b>	N59 33 41 W108 28 53 4E 16°E UTC-6 Elev 1044' A5023 D-13 LO1 LO5 HI2
<b>OPR</b>	Ministry of Hwys & Infrastructure 306-953-3263 Cert
<b>PF</b>	B-1 C-2,3,4,5,6
<b>FLT PLN</b>	NOTAM FILE CYSF
<b>FIC</b>	Edmonton 866-WXBRIEF (Toll free within Canada) or 866-541-4102 (Toll free within Canada & USA)
<b>ACC</b>	Edmonton IFR 888-358-7526 or 780-890-8304/8305
<b>SERVICES</b>	Call out chg may be levied for one or more svcs.
<b>FUEL OIL</b>	100LL, JA-1, HPR 14-23Z Mon-Fri exc hols O/T 306-498-2761/2118 80, 100
<b>RWY DATA</b>	Rwy 06(059°)/24(239°) 3930x100 treated gravel Rwy 06 first 1600' up 1.28% and last 2330' down 0.86%
<b>RCR</b>	Area Office 306-953-3262 or Opr Maint 14-22Z Mon-Fri exc hols. PLR/PCN
<b>LIGHTING</b>	06-AS(TE ME) P1, 24-AS(TE ME) P1 ARCAL-123.2 type K
<b>COMM</b>	
<b>ATF</b>	tfc 123.2 5NM 4100 ASL
<b>NAV</b>	
<b>NDB</b>	YBE 379 (M) N59 33 18 W108 31 03 055° 1.3NM to A/D Unmonitored



# CANADA FLIGHT SUPPLEMENT / GPH 205

Effective 0901Z 20 November 2008 to 0901Z 15 January 2009

B960 AERODROME/FACILITY DIRECTORY

## UXBRIDGE (COTTAGE HOSP) ON (Heli)

CNA5

<b>REF</b>	N44 06 11 W79 07 42 Adj SW 11°W UTC-5(4) Elev 900' VTA A5000
<b>OPR</b>	Uxbridge Cottage Hosp 905-852-9771 Cert PPR
<b>FLT PLN</b>	NOTAM FILE CYKZ
<b>FIC</b>	London 866-WXBRIEF (Toll free within Canada) or 866-541-4104 (Toll free within Canada & USA)
<b>PAD DATA</b>	86' dia asphalt 114' dia Rstd max heli length 57.5'
<b>RCR</b>	Opr
<b>LIGHTING</b>	RY(LO) RF(FL)
<b>PRO</b>	Arr/dep btwn 256°-271° fr heli.

