

CANADA FLIGHT SUPPLEMENT / GPH 205

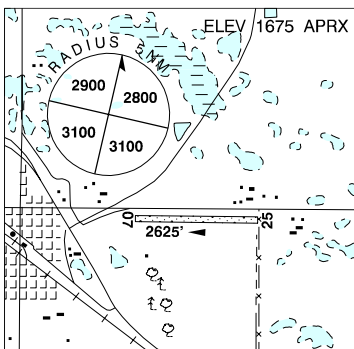
Effective 0901Z 20 November 2008 to 0901Z 15 January 2009

AERODROME/FACILITY DIRECTORY B747

RADISSON SK

CJL9

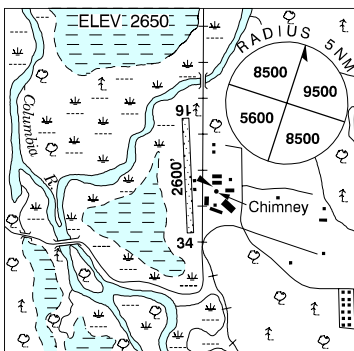
REF	N52 27 47 W107 22 38 Adj E 13°E UTC-6 Elev 1675' aprx A5015 E-16
OPR	Town 306-827-2218 Reg
PF	C-1,2,5
FLT PLN FIC	NOTAM FILE CYXE Edmonton 866-WXBRIEF (Toll free within Canada) or 866-541-4102 (Toll free within Canada & USA)
RWY DATA RCR	Rwy 07(077°)/25(257°) 2625x90 turf Opr No win maint
COMM ATF	tfc 123.2 5NM 4700 ASL
PRO	Noise abatement – Avoid flt over farm on final apch path to rwy 25 if cond permit.
CAUTION	Unmarked 5' fence aprx 25' fr thld 25.



RADIUM HOT SPRINGS BC

CBL6

REF	N50 38 W116 06 Adj W 18°E UTC-7(6) Elev 2650' A5005 E-15
OPR	E. Hirschfeld 780-499-6808 Reg PPR Ldg fees
PF	C-2,5,6
FLT PLN FIC	NOTAM FILE CYXC Kamloops 866-WXBRIEF (Toll free within Canada) or 866-541-4101 (Toll free within Canada & USA)
SERVICES S	4,5
RWY DATA RCR	Rwy 16/34 2600x100 turf Opr No win maint
COMM ATF	tfc 123.2 5NM 5700 ASL
CAUTION	Watch for wildlife in the vicinity of the rwy.



CANADA FLIGHT SUPPLEMENT / GPH 205

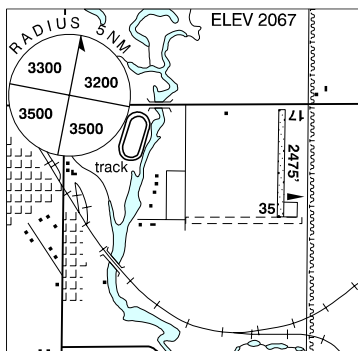
Effective 0901Z 20 November 2008 to 0901Z 15 January 2009

B748 AERODROME/FACILITY DIRECTORY

RADVILE SK

CKF2

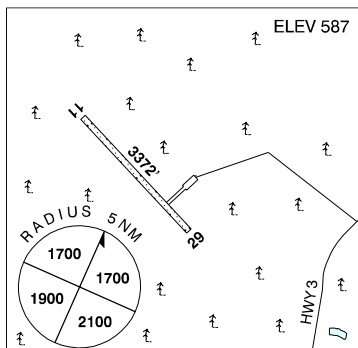
REF	N49 27 38 W104 16 18 1E 11°E UTC-6 Elev 2067' A5006 E-16
OPR	Town 306-869-2477 Fax 306-869-3100 Reg
PF	C-1,2,4,5
FLT PLN	NOTAM FILE CYQR FIC Edmonton 866-WXBRIEF (Toll free within Canada) or 866-541-4102 (Toll free within Canada & USA)
RWY DATA	Rwy 17(169°)/35(349°) 2475x75 turf
RCR	Opr No win maint
COMM	
ATF	tfc 123.2 5NM 5100 ASL
PRO	Rgt hand circuits rwy 35 (CAR 602.96).



RAE / EDZO NT

CRE2

REF	N62 46 00 W116 05 01 1.4SW 24°E UTC-7(6) Elev 587' A5029 D-13
OPR	Dogrib Rae Band 867-371-4005 or 867-392-6601 Reg PNR
PF	C-1,2,3,4,5
FLT PLN	NOTAM FILE CYZF FIC North Bay 866-WXBRIEF (Toll free within Canada) or 866-541-4109 (Toll free within Canada & USA)
ACC	Edmonton IFR 888-358-7526 or 780-890-8304/8305
SERVICES	S 4
RWY DATA	Rwy 11(113°)/29(293°) 3372x98 gravel
RCR	Opr Ltd win maint 1 hr PNR
LIGHTING	11(TE LO), 29(TE LO) ARCAL-123.2 type J
COMM	
ATF	tfc 123.2 5NM 3600 ASL



RAE LAKES NT — See GAMÈTI / RAE LAKES

CANADA FLIGHT SUPPLEMENT / GPH 205

Effective 0901Z 20 November 2008 to 0901Z 15 January 2009

AERODROME/FACILITY DIRECTORY B749

RAINBOW LAKE AB

CYOP

REF	N58 29 29 W119 24 28 Adj S 22°E UTC-7(6) Elev 1756' A5022 D-13 LO1 RCAP	
OPR	Town 780-956-3878/3934 Cert Ldg fees	
PF	B-1 C-2,3,4,5,6	
FLT PLN	NOTAM FILE CYOP	
FIC	Edmonton 866-WXBRIEF (Toll free within Canada) or 866-541-4102 (Toll free within Canada & USA)	
ACC	Edmonton IFR 888-358-7526 or 780-890-8304/8305	
SERVICES	Call out chg may be levied for svcs.	
FUEL	100LL, JA, FSII Airborne Energy 780-956-3333 Swan Aero 780-956-3933	
RWY DATA	Rwy 09(090°)/27(270°) 4501x100 asphalt	
RCR	Opr Ltd maint PLR/PCN	
LIGHTING	09-(TE LO) P1, 27-(TE LO) P1 ARCAL-122.8 type J	
COMM		
ATF	UNICOM ltd hrs O/T tfc 122.8 5NM 4800 ASL	
NAV		
NDB	YOP 344 (M) N58 27 24 W119 15 06 271° 5.2NM to A/D	
DME	Z2 111.7 (M) Ch 54 N58 29 42 W119 24 46 (1790') at A/D Pvt	
CAUTION	Dip 6' wide 4 inches deep across full width of rwy aprx 660' fr thrd rwy 09. Flare stack at gas plant 0.7NM E of YOP NDB may occasionally produce a flame reaching aprx 600 AGL, 2181 ASL.	

RANKIN INLET NU

CYRT

REF	N62 48 41 W92 06 57 Adj 7°W GV85°E UTC-6(5) Elev 94' A5031 D-14 LO5 HI1 HI2 CAP	
OPR	Govt of Nunavut 867-645-8200 Cert	
PF	A-1 C-2,3,4,5,6	
FLT PLN	NOTAM FILE CYRT & CZNB	
FIC	North Bay 866-WXBRIEF (Toll free within Canada) or 866-541-4109 (Toll free within Canada & USA)	
ACC	Edmonton IFR 888-358-7526 or 780-890-8304/8305	
WX	METAR H24. TAF H24, issue times: 00, 06, 12, 18Z.	
SERVICES	Call out chg may be levied outside oprg hrs.	
FUEL	100LL(D), JA-1, HPR 1430-24Z± Mon-Sat exc hols PNR ctc 867-645-2973/4004. VISA credit card only, other credit by prior arng only, ctc 867-645-8424, allow 7 working days.	
S	2,6	
RWY DATA	Rwy 13T(129°T)/31T(309°T) 6000x150 asphalt, A-cable rwy 13T BLISS 500S, (1500') rwy 31T BLISS 500S, (1500')	
RCR	867-645-2672 A/D maint avbl 13-22Z± Mon-Fri O/T 2 hrs PNR thru FSS & call-out chg may be levied.	

CANADA FLIGHT SUPPLEMENT / GPH 205

Effective 0901Z 20 November 2008 to 0901Z 15 January 2009

B750 AERODROME/FACILITY DIRECTORY

RANKIN INLET NU (Cont'd)

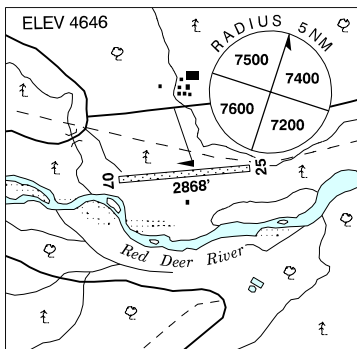
CYRT

LIGHTING	13T-AN(TE HI) V2, 31T-AS(TE HI) V2
COMM	
RADIO	Rankin rdo 122.2 (V) (emerg only 867-645-2672)
RCO	Arctic rdo 126.7 (FISE)
MF	Rankin rdo 122.2 (V) 5NM 3100 ASL (CAR 602.98)
VDF	122.2
NAV	
NDB	RT 284 (M) N62 49 31 W92 06 34 192°T 0.8NM to A/D
VOR/DME	YRT 112.4 Ch 71 N62 48 50 W92 07 02 at A/D (140') VOR oriented on True North
PRO	Turbo-jet acft maintain rwy centreline on apch & dep below 2000 ASL to avoid noise sensitive wildlife habitat May 15-Aug 15.

RED DEER FORESTRY AB

CFR7

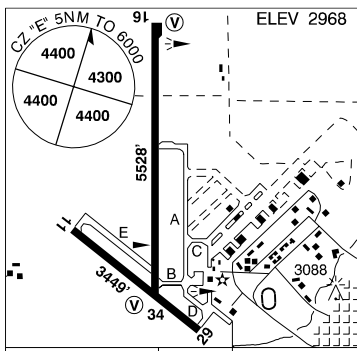
REF	N51 39 05 W115 14 21 18°E UTC-7(6) Elev 4646' A5005 E-15 E-16
OPR	Sundre Flying Club 403-638-2214/9001 Reg PPR
FLT PLN	NOTAM FILE CYQF Edmonton 866-WXBRIEF (Toll free within Canada) or 866-541-4102 (Toll free within Canada & USA)
FIC	
ACC	Edmonton IFR 888-358-7526 or 780-890-8304/8305
RWY DATA	Rwy 07(067°)/25(247°) 2868x100 turf
RCR	Opr Ltd sum maint only
COMM	
ATF	tfc 123.2 5NM 7600 ASL
CAUTION	Animals may be on or in vic of rwy. Gopher holes in rwy. Possible heli tfc 0.5NM N of Alberta Forestry outpost and vic of A/D.



RED DEER REGIONAL AB

CYQF

REF	N52 10 56 W113 53 40 6SSW 17°E UTC-7(6) Elev 2968' A5005 A5015 E-15 E-16 LO2 HI3 CAP
OPR	Red Deer Regional Aprt Authority 403-886-4388 Cert Ldg fees
PF	A-1,2,3 C-2,3,4,5,6
FLT PLN	NOTAM FILE CYQF Edmonton 866-WXBRIEF (Toll free within Canada) or 866-541-4102 (Toll free within Canada & USA)
FIC	
ACC	Edmonton IFR 888-358-7526 or 780-890-8304/8305
WX	METAR H24. TAF H24, issue times: 00, 06, 12, 18Z.
PIK	ATB, Pilot's lounge, airside access.



CANADA FLIGHT SUPPLEMENT / GPH 205

Effective 0901Z 20 November 2008 to 0901Z 15 January 2009

AERODROME/FACILITY DIRECTORY B751

RED DEER REGIONAL AB (Cont'd)

CYQF

SERVICES	Call out chg may be levied for one or more svcs
FUEL	100, JA, JA-1 (with FSII), F-34
OIL	All
S	1,2,3,5 15-24Z†
SUP FL	D-ice, LPOX
JASU	10/15
PVT ADV	Sky Wings Avn (Executive Fit Centre) 123.4 15-04Z† 403-886-5191
RWY DATA	Rwy 16(163°)/34(343°) 5528x98 asphalt Rwy 11(113°)/29(293°) 3449x100 asphalt
RCR	Opr Mon-Fri 1430-2300Z† PLR
LIGHTING	11-(TE ME), 29(TE ME), 16-(TE ME) V1, 34-(TE ME) V1
COMM	
RADIO	118.5 (V) (emerg only 403-886-4547)
RCO	Edmonton rdo 122.5 (FISE) 126.7 (FISE)
ATIS	124.0
MF	rdo 118.5 5NM 6000 ASL (CAR 602.98)
PAL	Edmonton Ctr 132.85
VDF	118.5
NAV	
NDB	Red Deer YQF 320 (L) N52 07 42 W113 53 58 349° 2.8NM to A/D
DME	Red Deer 6G 113.8 Ch 85 N52 10 52 W113 52 57 (2985') at A/D Pvt
PRO	Rgt hand circuits rwys 11 & 16 (CAR 602.96).
CAUTION	Deer in vic of rwys. Ultralight activity at aprt. Acft at opposite ends of rwy 16/34 may not be vis to each other. Twy E sfc ruf.

RED DEER FSS – RCO

Edmonton City Centre (Blatchford Field) 119.1 (RAAS) 06-13Z† (N53 34 W113 31)

RED DEER REGIONAL HOSP CENTRE AB (Heli)

CRD3

REF	N52 15 43 W113 48 57 17°E UTC-7(6) Elev 2877' A5005 A5015 E-15 E-16 RCAP	
OPR	David Thompson Health Region 403-343-4744 Cert PPR	
PF	A-1,2,3 C-4,5,6	
FLT PLN	NOTAM FILE CYQF	
FIC	Edmonton 866-WXBRIEF (Toll free within Canada) or 866-541-4102 (Toll free within Canada & USA)	
ACC	IFR 888-358-7526 or 780-890-8304/8305	
WX	METAR H24 TAF H24, issue times: 00, 06, 12, 18Z	
PAD DATA	57.4 dia concrete 16,000 lbs	
LIGHTING	RY(LO)	
COMM		
RADIO	118.5 (V) (emerg only 403-886-4547)	
RCO	Edmonton rdo 122.5 126.7	
ATIS	124.0	
MF	rdo 118.5 5NM (centred on Red Deer Regional aprt 5.8NM S) 6000 ASL (CAR 602.98)	
PAL	Edmonton Centre 132.85	
VDF	118.5	

CANADA FLIGHT SUPPLEMENT / GPH 205

Effective 0901Z 20 November 2008 to 0901Z 15 January 2009

B752 AERODROME/FACILITY DIRECTORY

RED DEER REGIONAL HOSP CENTRE AB (Heli)

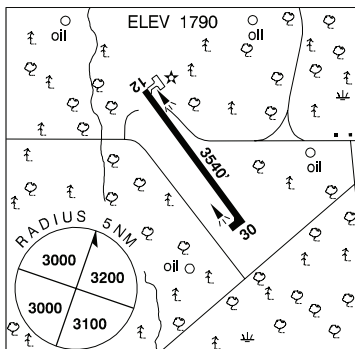
CRD3

PRO	Arr/dep btwn 298°-008° clockwise & 073°-109° clockwise fr heli. Slope 8% for single engine acft.
CAUTION	P-lines marked with orange/white balls SE heli 073°-109°. Office bldg NE heli marked with obst lgts.

RED EARTH CREEK AB

CEH5

REF	N56 32 47 W115 16 27 19°E UTC-7(6) Elev 1790' A5023 D-13 E-15 LO1
OPR	Muni District #17 780-891-3778 Reg
FLT PLN	NOTAM FILE CYPE
FIC	Edmonton 866-WXBRIEF (Toll free within Canada) or 866-541-4102 (Toll free within Canada & USA)
ACC	Edmonton IFR 888-358-7526 or 780-890-8304/8305
RWY DATA	Rwy 12(124°)/30(304°) 3540x75 asphalt
RCR	Opr 780-649-0500 Ltd win maint
LIGHTING	12-(TE ME), 30-(TE ME) ARCAL-123.2 type K
COMM	
ATF	tfc 123.2 5NM 4800 ASL

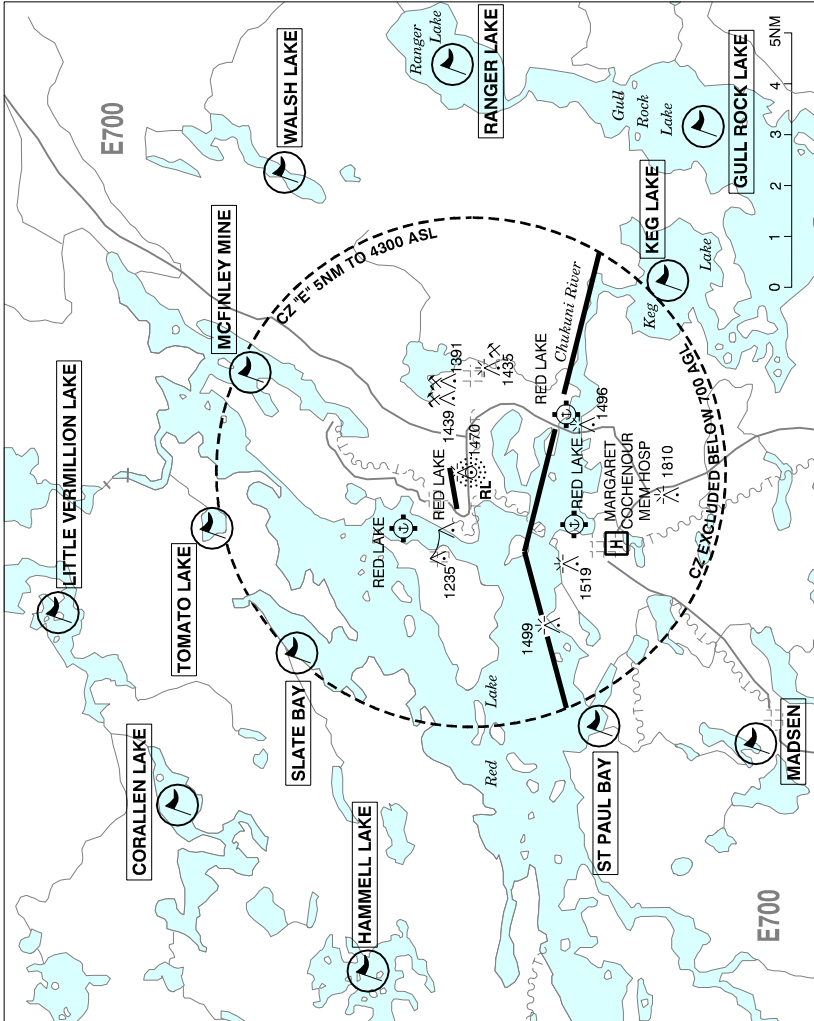


CANADA FLIGHT SUPPLEMENT / GPH 205

Effective 0901Z 20 November 2008 to 0901Z 15 January 2009

AERODROME/FACILITY DIRECTORY B753

RED LAKE VFR TERMINAL PROCEDURES CHART



LOCATION	IDENT	LAT/LONG
CORALLEN LAKE	VCCLK	N51° 09.42 W93° 57.47
GULL ROCK LAKE	VCGR	N50° 59.10 W93° 36.33
HAMMELL LAKE	VCHML	N51° 05.67 W94° 02.63
KEG LAKE	VCKEG	N50° 59.80 W93° 41.12
LITTLE VERMILLION LAKE	VCVLL	N51° 11.77 W93° 51.47
MADSEN	VCMDN	N50° 58.07 W93° 55.52
MCFINLEY MINE	VCMFM	N51° 08.00 W93° 43.97
RANGER LAKE	VCRLK	N51° 04.02 W93° 34.38
SLATE BAY	VCSBY	N51° 07.08 W93° 52.72
ST PAUL BAY	VCSPB	N51° 01.15 W93° 54.98
TOMATO LAKE	VCTLK	N51° 08.75 W93° 48.83
WALSH LAKE	VCWLK	N51° 07.32 W93° 37.73

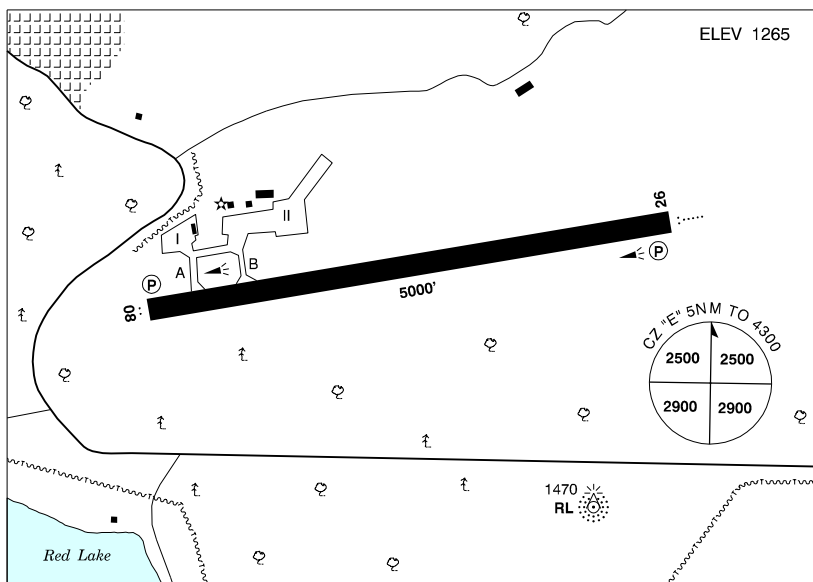
CANADA FLIGHT SUPPLEMENT / GPH 205

Effective 0901Z 20 November 2008 to 0901Z 15 January 2009

B754 AERODROME/FACILITY DIRECTORY

RED LAKE ON

CYRL



REF	N51 04 01 W93 47 35 3N 1°E UTC-6(5) Elev 1265' A5007 E-17 LO4 HI4 CAP
OPR	Muni of Red Lake/Thunder Bay Airport Services Inc 807-662-2581 Cert
PF	A-1,3,6, avbl H24 C-2,5 D-4
CUST	AOE/15 888-226-7277 (DT 14-22Z) May 14-Sep 7
FLT PLN	NOTAM FILE CYRL
FIC	Winnipeg 866-WXBRIEF (Toll free within Canada) or 866-541-4103 (Toll free within Canada & USA)
WX	METAR 10-03Z† TAF 11-03Z†, issue times: 12, 14, 20Z (DT 11, 14, 20Z).
SERVICES	Call out chg may be levied for one or more svcs
FUEL	100LL, JA-1 with FSII (CON I IP AP SP HPR, FSII)
OIL	All
S	1,2,3,4,5,6
JASU	CE-16, 807-662-1177/807-727-2308
PVT ADV	Esso 807-662-7241/7511; Shell 807-662-1177/807-727-2308
MIL CON	Larry McCann Ltd (Imperial Oil/Esso) 807-662-7241
RWY DATA	Rwy 08(079°)/26(259°) 5000x150 asphalt Rwy 26 down 0.58%
RCR	APM 807-662-2581 12-0230Z† Mon-Fri, 13-14Z† Sun, 14-22Z Sat (Sum see CUST), 13-21Z† Sat (Win), O/T & emerg 807-727-0262 2 hr PNR. CRFI, PLR/PCN
LIGHTING	08-AS(TE ME) P1, 26-AO(TE ME) P1 ARCAL-122.3 type K, lowest ints not avbl on ARCAL; key mic 5 times within 5 sec for med ints rwy & PAPI lgt; 7 times within 5 sec for high ints rwy, PAPI & all other apch lgt.
COMM	RCO Kenora rdo 122.3 (RAAS) 12-04Z† Winnipeg rdo 123.55 (FISE) MF Kenora rdo 12-04Z† O/T ftc 122.3 5NM 4300 ASL (CAR 602.98) PAL 135.325

CANADA FLIGHT SUPPLEMENT / GPH 205

Effective 0901Z 20 November 2008 to 0901Z 15 January 2009

AERODROME/FACILITY DIRECTORY B755

RED LAKE ON (Cont'd)

CYRL

NAV	NDB RL 218 (M) N51 03 40 W93 47 05 318° 0.4NM to A/D VOR/DME YRL 114.0 Ch 87 N51 04 17 W93 45 43 (1280') 255° 1.2NM to A/D
PRO	Rgt hand circuits rwy 26 (CAR 602.96).
CAUTION	Extv float/ski tfc in vic. Aerobatics may be in progress over aprt 4300 ASL & below. Possibility of wildlife within aprt perimeter.

RED LAKE (MARGARET COCHENOUR MEM HOSP) ON (Heli)

CRL3

REF	N51 00 49 W93 49 19 Adj 1°E UTC-6(5) Elev 1254' A5007 E-17	
OPR	Margaret Cochenour Mem Hosp 807-727-2231 Ext 346 Cert PPR	
FLT PLN	NOTAM FILE CYRL FIG Winnipeg 866-WXBRIEF (Toll free within Canada) or 866-541-4103 (Toll free within Canada & USA)	
PAD DATA	87' concrete octagon 114' x 114' max length 57.4'	
RCR	Opr	
LIGHTING	RY(LO) Green	
COMM	RCO Kenora rdo 122.3 (RAAS) 12-04Z± Winnipeg rdo 123.55 (FISE) MF Kenora rdo 12-04Z± O/T tfc 122.3 5NM centred on Red Lake A/D 3.4NM NNE 4300 ASL (CAR 602.98)	
NAV	NDB Red Lake RL 218 (M) N51 03 40 W93 47 05 205° 3.2NM to A/D VOR/DME Red Lake YRL 114.0 Ch 87 N51 04 17 W93 45 43 (1280') 210° 4.1NM to A/D	
PRO	Arr/dep btwn 113°-135° clockwise & 325°-352° clockwise fr heli. Slope 16%. Rstd to twin engine heli.	
CAUTION	Marked P-poles 330' ESE. 4 lgtd obst vic, refer to A/D sketch.	

RED SUCKER LAKE MB

CYRS

REF	N54 10 02 W93 33 26 Adj 0° UTC-6(5) Elev 729' A5017 E-17 LO3 RCAP	
OPR	Govt of Manitoba 204-677-6722 Cert	
PF	A-1 C-2,4 Tml bldg opr 13-18Z±, 19-2115Z± Mon-Fri, clsd Sat, Sun & hols	
FLT PLN	NOTAM FILE CYIV FIG Winnipeg 866-WXBRIEF (Toll free within Canada) or 866-541-4103 (Toll free within Canada & USA)	
RWY DATA	Rwy 08(086°)/26(266°) 3550x85 crushed rock RCR APM 204-469-5396 13-18Z±, 19-2115Z± Mon-Fri exc hols O/T 204-469-5032 Rwy extremely soft dur spring & after rain.	

CANADA FLIGHT SUPPLEMENT / GPH 205

Effective 0901Z 20 November 2008 to 0901Z 15 January 2009

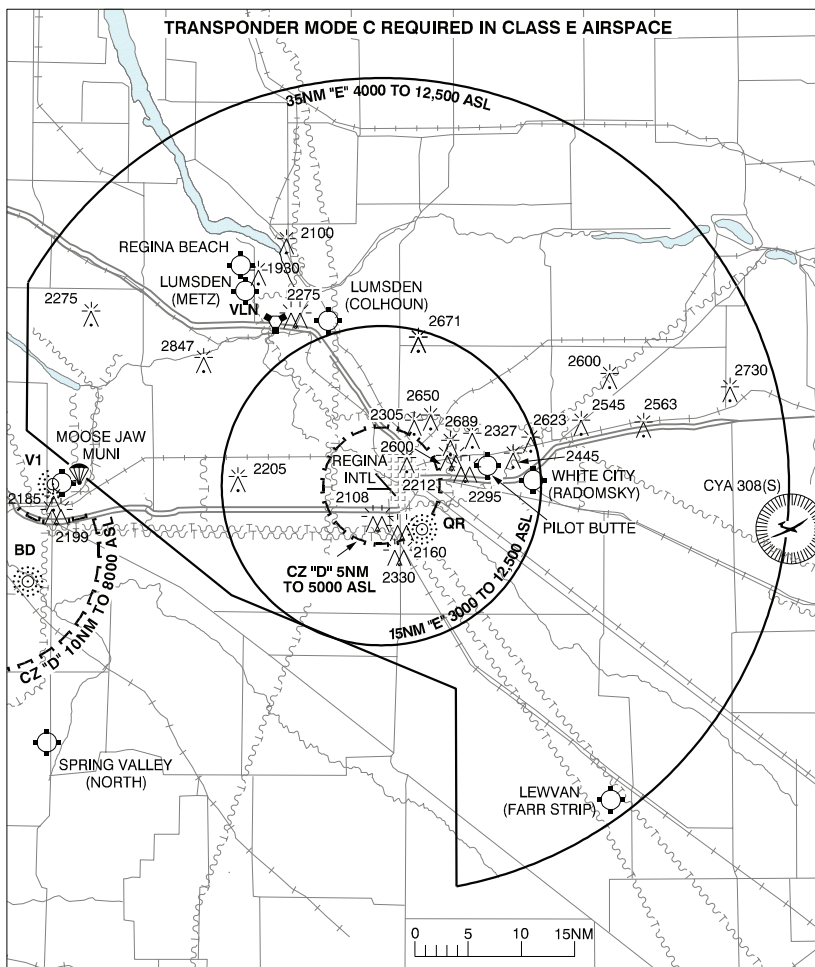
B756 AERODROME/FACILITY DIRECTORY

RED SUCKER LAKE MB (Cont'd)

CYRS

LIGHTING	08-(TE LO), 26-(TE LO) ARCAL-122.8 type J (see CAUTION)
COMM	ATF UNICOM ltd hrs O/T ftc 122.8 5NM 3800 ASL
NAV	NDB 4M 399 (L) N54 10 08 W93 33 47 at A/D Pvt
CAUTION	Rwy edge lgt installed higher than std (aprx 27 inches high loc 5' outside rwy edge). Lgt'd twr 1137 ASL (415 AGL) 1.5NM SW.

REGINA VFR TERMINAL PROCEDURES CHART



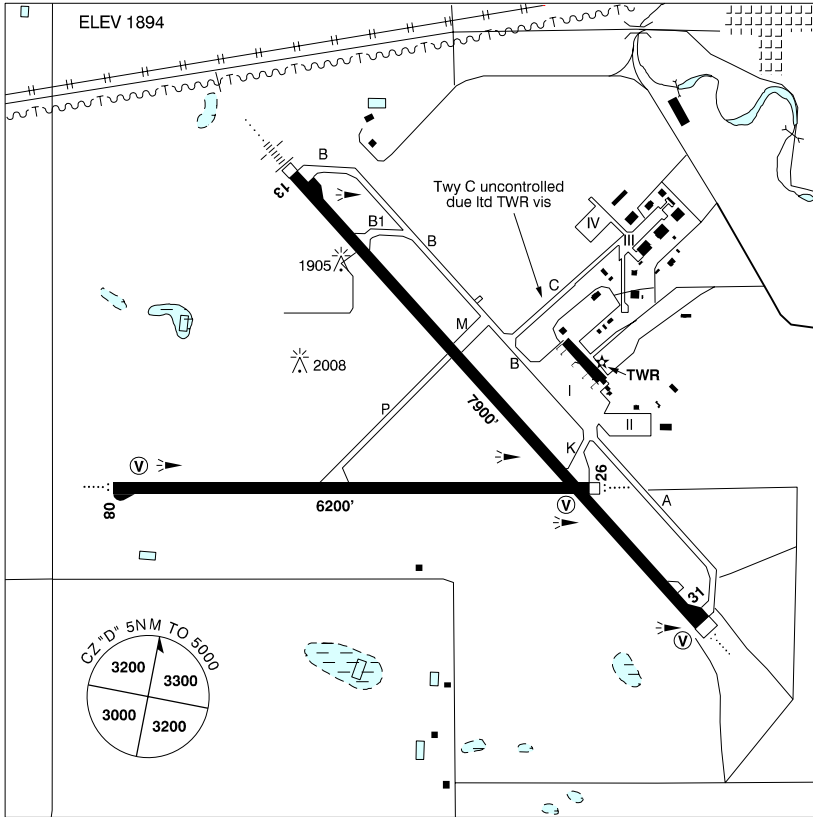
CANADA FLIGHT SUPPLEMENT / GPH 205

Effective 0901Z 20 November 2008 to 0901Z 15 January 2009

AERODROME/FACILITY DIRECTORY B757

REGINA INTL SK

CYQR



REF	N50 25 55 W104 39 57 2SW 11°E UTC-6 Elev 1894' A5006 E-16 LO2 HI4 T1 CAP RCAP
OPR	Regina Aprt Authority (RAA) 306-761-7550 Cert
PF	A-1,2,3,6 Tml opr 12-05Z C-4,5
CUST	AOE/120 (250 with staged off-loading) 888-226-7277 14-06Z Addn svc avbl 12-14Z & 04-06Z. PNR by 22Z. Military act only AOE 306-780-6223/6218
FLT PLN	NOTAM FILE CYQR FIC Edmonton 866-WXBRIEF (Toll free within Canada) or 866-541-4102 (Toll free within Canada & USA) Pilots are to open/close VFR flt pln with Edmonton FIC via phone or Edmonton rdo 122.5 when practicable. WX METAR H24. TAF H24, issue times: 00, 06, 12, 18Z. DUAT Regina Aerocentre PIK NAV CANADA ops bldg, airside access.

CANADA FLIGHT SUPPLEMENT / GPH 205

Effective 0901Z 20 November 2008 to 0901Z 15 January 2009

B758 AERODROME/FACILITY DIRECTORY

REGINA INTL SK (Cont'd)

CYQR

SERVICES	Call out chg may be levied for one or more svcs 100LL, F-34, JB, FSII, SP, HPR 1330-05Z Nov-Apr incl; 1230-05Z May-Oct; (CON S IP JA-1, FSII)
FUEL	All
OIL S	1,2,3,4,5,6
ARFF	6 Core hrs 13-05Z. Hrs are seasonally adjusted earlier and/or later by up to 1.5 hrs to accommodate airline schedule changes in Apr & Oct each year. Ctc 306-761-7550 (H24) for current hrs of ops. O/T aprt closed to acft 20 seats & abv, exc for diversions or as an altn A/D, without PPR, call out chg.
SUP FL	D & A-ice, LPOX
JASU	CE16, Air start
PVT ADV	Esso mobile 122.95 12-04Z; Regina Aerocentre/Shell 122.725 11-04Z
MIL CON	G.E.M. Flight Group Inc (Shell) 306-359-0020
RWY DATA	Rwy 13(127°)/31(307°) 7900x150 asphalt Rwy 08(079°)/26(259°) 6200x150 asphalt
TWY	Twy C uncontrolled due ltd TWR vis
APRON	Apron II rstd to acft under 112,000 lbs. Apron III rstd to acft under 25,000 lbs, narrow twy, prkg large wing span acft 6 hr max, single row prkg only. Apron IV rstd to acft under 5,000 lbs.
RCR	Opr 306-761-7550 CRFI avbl ltd hrs, PLR/PCN
LIGHTING	08-AO(TE HI) V2, 26-AO(TE HI) V2, 13-AN(TE HI), 31-AO(TE HI)V2
COMM	
RCO	Edmonton rdo 122.5 (FISE) 126.7 (FISE)
ATIS	127.0 276.0 12-05Z Nov 1-Mar 31; 12-04Z Apr 1-Oct 31
GND	121.9 277.3 12-05Z Nov 1-Mar 31; 12-04Z Apr 1-Oct 31
TWR	118.6 236.6 (E) 12-05Z Nov 1-Mar 31; 12-04Z Apr 1-Oct 31 (emerg only 306-359-5013)
MF	rdo 118.6 236.6 (E) 5NM 5000 ASL (CAR 602.98) 05-12Z Nov 1-Mar 31; 04-12Z Apr 1-Oct 31 (emerg only 306-359-5018)
PAL	Winnipeg Ctr 120.1 123.8 124.3 266.3 279.8 283.4
NAV	
VOT	114.8
NDB	QR 290 (L) N50 22 11 W104 34 23 307° 4.4NM to thld 31 FINDLAY ZQR 204 (L) N50 25 44 W104 31 38 259° 4.9NM to thld 26 AJAX ZRS 219 (L) N50 29 07 W104 44 10 127° 3.6NM to thld 13 BROPHY ZRG 414 (L) N50 25 44 W104 47 27 079° 4.2NM to thld 08
VORTAC	LUMSDEN VLN 114.2 Ch 89 N50 40 01 W104 53 23 (1895°) 139° 16.5NM to A/D
ILS	IQR 109.5 (Rwy 13/31) RVR
PRO	
NOISE	Rgt hand circuits rwy 08 & 13 (CAR 602.96). NOISE ABATEMENT PROCEDURE: All acft. ATC assigned rwys will divert arr & dep from noise sensitive areas. When twr clsd & operational conds permit, arr on rwys 08 or 13, dep on rwys 26 or 31. See CAP.
CAUTION	Ozone research radiosonde balloon fit fr N50 12 10 W104 42 45 (13.9NM S airport), max alt 115,000 MSL. Launches at 1715Z every Wed wx permitting, otherwise launches Thu or Fri at 1715Z. High sfc winds will delay release to 2315Z Wed, Thu or Fri. Inst package measures 20x20x26 cm, wt 1.2 kg, off-white 2 m dia balloon. Ascent rate 1000' per min, aprx ascent matrix: 10,000 MSL, launch + 8 min, 20,000 MSL, launch + 18 min, 30,000 MSL, launch + 28 min, 40,000 MSL, launch + 38 min, 50,000 MSL, launch + 48 min.

REGINA FSS - RCO

Buffalo Narrows 122.3 (RAAS) 14-02Z (N55 51 W108 29)

Stony Rapids 122.2 (RAAS) 13-04Z (N59 11 W105 55)

Yorkton 122.2 296.6 (RAAS) 12-04Z (N51 15 W102 27)

CANADA FLIGHT SUPPLEMENT / GPH 205

Effective 0901Z 20 November 2008 to 0901Z 15 January 2009

AERODROME/FACILITY DIRECTORY B759

REGINA BEACH SK

CKL9

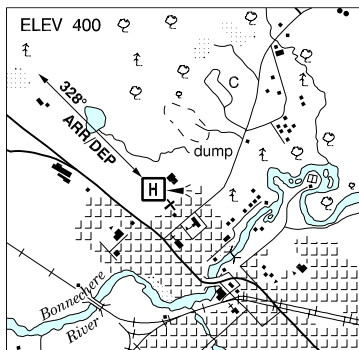
REF	N50 45 10 W104 58 45 3S 11°E UTC-6 Elev 1850' aprx A5006 E-16
OPR	D. Edwards, Vortex Avn Ltd 306-729-3343 Fax 306-729-4413 Reg PPR
FLT PLN	NOTAM FILE CYQR
FIC	Edmonton 866-WXBRIEF (Toll free within Canada) or 866-541-4102 (Toll free within Canada & USA)
RWY DATA	Rwy 14(137°)/32(317°) 2565x80 earth
RCR	Opr Ltd win maint
COMM	
ATF	tfc 123.2 5NM 4900 ASL
PRO	Rgt hand circuits rwy 14 (CAR 602.96).
CAUTION	Lumsden (Metz) A/D, tfc 123.2, aprx 2NM SE.

REID'S FIELD ON — See CAMBRIDGE / REID'S FIELD

RENFREW (VICTORIA HOSP) ON (Heli)

CPG9

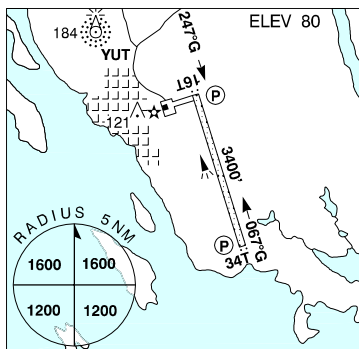
REF	N45 28 57 W76 41 46 Adj W 13°W UTC-5(4) Elev 400' A5000
OPR	Renfrew Victoria Hosp 613-432-4851 Cert PPR
FLT PLN	NOTAM FILE CYTA
FIC	London 866-WXBRIEF (Toll free within Canada) or 866-541-4104 (Toll free within Canada & USA)
PAD DATA	86' dia asphalt 114' dia Rstd max heli length 57.5'
RCR	Opr
LIGHTING	DR RY(LO) RF(FH)
PRO	Arr/Dep 328° fr heli.



REPULSE BAY NU

CYUT

REF	N66 31 17 W86 13 29 Adj E 23°W GV63°E UTC-6(5) Elev 80' A5037 C-11 LO5 HI1 HI2 CAP
OPR	Govt of Nunavut 867-645-8200 Cert
PF	A-1 C-2,4,5,6
FLT PLN	NOTAM FILE CYUT
FIC	North Bay 866-WXBRIEF (Toll free within Canada) or 866-541-4109 (Toll free within Canada & USA)
ACC	Edmonton IFR 888-358-7526 or 780-890-8304/8305
CARS	867-462-9973 ltd hrs (see COMM) O/T 867-462-4994/4556. Lcl wx only, other wx O/R
WX	METAR dur CARS hrs (see COMM). TAF 14-23Z† Mon-Fri, issue times: 15, 19Z (DT 14, 19Z); TAF 17-21Z† Sat & Sun, issue times: 17Z† exc hols.



CANADA FLIGHT SUPPLEMENT / GPH 205

Effective 0901Z 20 November 2008 to 0901Z 15 January 2009

B760 AERODROME/FACILITY DIRECTORY

REPULSE BAY NU (Cont'd)

CYUT

SERVICES	Call out chg may be levied outside oprg hrs. DFA 16-01Z± Mon-Fri exc hols PNR ctc 867-462-9943/9921 or 867-462-4722 or 867-645-8156/8153. Credit cards accepted, VISA, MC, American Express. Credit by prior arng only ctc 867-645-8424, allow 7 working days.
FUEL	
RWY DATA	Rwy 16T(161°T)/34T(341°T) 3400x100 gravel Rwy 34T up 1.1%
RCR	CARS, A/D maint avbl 14-23Z± Mon-Fri exc hol O/T 867-462-4560 up to 2 hrs PNR, call-out chg rqrd. PLR/PCN
LIGHTING	16T-AS(TE ME) AP, 34T-AS(TE ME) AP ARCAL-122.1 type K
COMM	
MF	aprt rdo ltd hrs O/T tfc 122.1 5NM 3100 ASL (CAR 602.98)
APRT RDO	122.1 (V) 1245-2315Z± Mon-Fri, 1445-2115Z± Sat & Sun, exc federal observed hols, O/T 2 hrs PNR, call-out chg
NAV	
NDB	YUT 335 (M) N66 31 42 W86 14 32 135°T 0.6NM to A/D

RESOLUTE BAY NU

CYRB

REF	N74 43 01 W94 58 10 35°W GV60°E UTC-6(5) Elev 215' A5046 A5047 B-7 LO9 HI1 CAP	<p>The map shows a narrow runway (17T/35T) extending from the top towards the bottom. To the right of the runway is Strip Lake. A circular area with a radius of 5 NM is centered on the runway. Inside this circle, four elevation markers are shown: 1600, 1700, 1600, and 1800. The runway is labeled with '26° G' at the top and '082° G' at the bottom. A distance of '6500' is marked along the runway. A '295' marker is also visible on the left side of the runway.</p>
OPR	Govt of Nunavut 867-252-3923 Cert	
PF	A-1 C-2,4,5,6 Tml bldg avbl 14-23Z± O/T PNR	
FLT PLN	NOTAM FILE CYRB & CZNB	
FIC	North Bay 866-WXBRIEF (Toll free within Canada) or 866-541-4109 (Toll free within Canada & USA)	
ACC	Edmonton IFR 888-358-7526 or 780-890-8304/8305	
CARS	867-252-3840	
WX	METAR H24. TAF H24, issue times: 00, 06, 12, 18Z.	
SERVICES	Call out chg may be levied outside oprg hrs.	
FUEL	JA-1 13-23Z± Mon-Fri O/T call out chg PNR 867-252-3857/3737 Fax 867-252-3838. All major credit cards accepted.	
S	1,2,4,6	
RWY DATA	Rwy 17T(167°T)/35T(347°T) 6500x200 gravel Rwy 35T up 0.58%	
RCR	Opr CRFI, PLR/PCN 1330-23Z± Mon-Sat.	
LIGHTING	17T-AO(TE HI) V1, 35T-AN(TE HI)	
COMM		
RCO	Arctic rdo 126.7 (FISE) 5680	
MF	aprt rdo 122.1 25NM 5300 ASL (CAR 602.98)	
APRT RDO	122.1 (V)	

CANADA FLIGHT SUPPLEMENT / GPH 205

Effective 0901Z 20 November 2008 to 0901Z 15 January 2009

AERODROME/FACILITY DIRECTORY B761

RESOLUTE BAY NU (Cont'd)

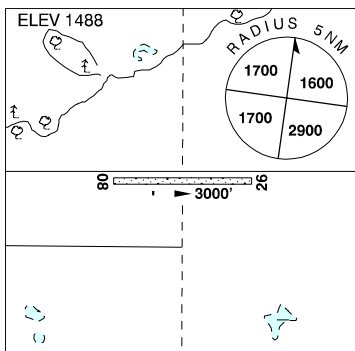
CYRB

NAV	<p>VOT 114.8</p> <p>NDB RB 350 (H) N74 44 49 W94 59 42 167°T 1.3NM to thld 17T</p> <p>VOR/DME CAPE MARTYR RU 391 (L) N74 40 31 W94 55 49 347°T 2.1NM to thld 35T YRB 112.1 Ch 58 N74 43 41 W94 55 22 213°T 0.8NM to A/D VOR oriented on True North</p> <p>DME IRB 110.3 Ch 40 N74 42 40 W94 57 36</p> <p>ILS IRB 110.3 (Rwy 347T/167T) RVR N74 43 59 W94 59 01</p>
CAUTION	Severe turbulence may occur on apch with gusty easterly winds. Dly radiosonde balloon launches with an ascent rate of 1000 ft/min btwn the hrs of 1115-1345Z & 2315-0145Z.

RESTON / R.M. OF PIPESTONE MB

CRP2

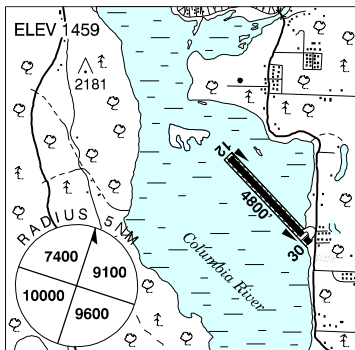
REF	N49 34 50 W101 03 10 2NE 8°E UTC-6(5) Elev 1488' A5007 E-16
OPR	R.M. of Pipestone 204-877-3327 Fax 204-877-3999 Reg
PF	C-1,2,5 D-4
FLT PLN	NOTAM FILE CYBR
FIC	Winnipeg 866-WXBRIEF (Toll free within Canada) or 866-541-4103 (Toll free within Canada & USA)
RWY DATA	Rwy 08(082°)/26(262°) 3000x70 gravel
RCR	Opr No win maint
COMM	
ATF	tfc 123.2 5NM 4500 ASL
CAUTION	Lgtd tower 1850 ASL (375 AGL) 1.6NM SE of A/D.



REVELSTOKE BC

CYRV

REF	N50 58 W118 11 1.7SSE 18°E UTC-8(7) Elev 1459' A5005 E-15 LO2 RCAP
OPR	Columbia-Shuswap Regional District 250-837-7007 Reg
PF	A-1,6 C-2,3,4,5
FLT PLN	NOTAM FILE CYKA
FIC	Kamloops 866-WXBRIEF (Toll free within Canada) or 866-541-4101 (Toll free within Canada & USA)
WX	Legacy AWOS
SERVICES	
FUEL	100LL, JA, FSII (Full/Self-serve, Visa, Mastercard, Amex) 250-837-7007
OIL	All
S	1,2,4,5,6 PNR
RWY DATA	Rwy 12/30 4800x75 asphalt Thld 30 displ 300'.
RCR	Opr Ltd win maint
COMM	
RCO	Pacific rdo 126.7 (FISE)
ATF	tfc 122.8 5NM 4500 ASL
PRO	Rgt hand circuits rwy 12 (CAR 602.96).



CANADA FLIGHT SUPPLEMENT / GPH 205

Effective 0901Z 20 November 2008 to 0901Z 15 January 2009

B762 AERODROME/FACILITY DIRECTORY

RICHARD W. LeVAN ON — See WINGHAM / RICHARD W. LeVAN

RICHELIEU QC

CSX3

REF	N45 26 52 W73 14 03 Adj NE 16°W UTC-5(4) Elev 115' VTA A5002 F-21	
OPR	3169065 Canada Inc 514-844-7331 Reg PPR	
PF	A-1 (ltd hrs) B-1 C-2,3,5 C-4,6 13-23Z†	
FLT PLN FIC	(bil) NOTAM FILE CYUL Québec 866-GOMÉTÉO or 866-WXBRIEF (Toll free within Canada) or 866-541-4105 (Toll free within Canada & USA)	
SERVICES S	1,4,5	
RWY DATA RCR	Rwy 13/31 2600x26 gravel Thld 13 displ 390'. Opr 13-23Z† Ltd win maint.	
COMM ATF TML	(bil) tfc 123.2 5NM below 2000 ASL outside CYHU & CYJN CZ Montréal 134.15 2000 ASL & above	
PRO	Rgt hand circuits rwy 31 (CAR 602.96). Favour rwy 13 for tkof when possible. Training areas: See Montréal Terminal VTTC.	
CAUTION	Ultralight activities. P-line short final rwy 31 may be difficult to see at sunset.	

RICHTER FIELD SK — See SASKATOON / RICHTER FIELD

RIDEAU LAKES ON — See WESTPORT / RIDEAU LAKES

RIDEAU VALLEY AIR PARK ON — See KARS / RIDEAU VALLEY AIR PARK

CANADA FLIGHT SUPPLEMENT / GPH 205

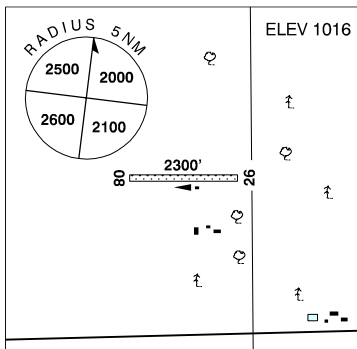
Effective 0901Z 20 November 2008 to 0901Z 15 January 2009

AERODROME/FACILITY DIRECTORY B763

RIDING MOUNTAIN MB

CRM2

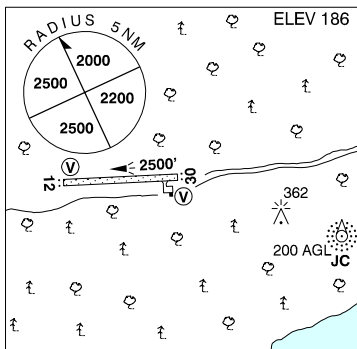
REF	N50 34 25 W99 21 41 7°E UTC-6(5) Elev 1016' A5007 E-16
OPR	Roland Kuip 204-967-2394 Reg PNR
PF	C-1
FLT PLN	NOTAM FILE CYBR
FIC	Winnipeg 866-WXBRIEF (Toll free within Canada) or 866-541-4103 (Toll free within Canada & USA)
RWY DATA	Rwy 08(083°)/26(263°) 2300x70 turf
RCR	Opr Ltd win maint
COMM	
ATF	tfc 123.2 5NM 4100 ASL



RIGOLET NL

CCZ2

REF	N54 10 47 W58 27 27 Adj 25°W UTC-4(3) Elev 186' A5020 E-19 RCAP
OPR	Govt of Newfoundland & Labrador 709-896-7840 Cert
PF	C-1,2,4,5
FLT PLN	NOTAM FILE CYYR
FIC	Halifax 866-WXBRIEF or (French) 866-GOMÉTÉO (Toll free within Canada) or 866-541-4106 (Toll free within Canada & USA)
ACC	Gander 709-651-5225 or 888-751-5225. Flt Plns by Fax 709-651-5205 & include phone numbers where pilot can be reached prior to dep.
RWY DATA	Rwy 12(113°)/30(293°) 2500x75 gravel Rwy 30 up 0.6%
RCR	Opr 709-947-3434/3384 Ltd win maint, ctc opr
LIGHTING	12-AS(TE ME) AV 4°, 30-AS(TE ME) AV 4° ARCAL-122.8 type K, key mic 7 times for RIL.
COMM	
ATF	tfc 122.8 5NM 3200 ASL
NAV	
NDB	JC 396 (M) N54 10 35 W58 26 07 317° 0.7NM to thld rwy 30
PRO	Rgt hand circuits rwy 12 (CAR 602.96).
CAUTION	362' twr .4NM ESE thld rwy 30



CANADA FLIGHT SUPPLEMENT / GPH 205

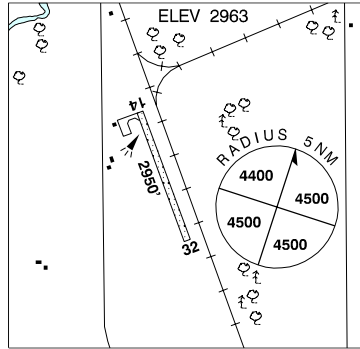
Effective 0901Z 20 November 2008 to 0901Z 15 January 2009

B764 AERODROME/FACILITY DIRECTORY

RIMBEY AB

CFC7

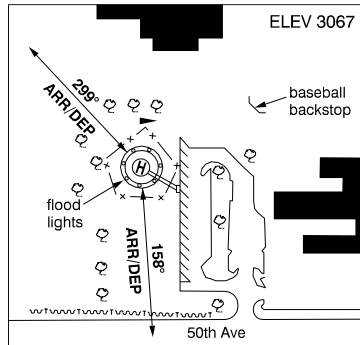
REF	N52 40 55 W114 14 15 2N 18°E UTC-7(6) Elev 2963' A5015 E-15 E-16
OPR	Town 403-843-2113 Reg
PF	A-1 C-2,3,4,5 D-6
FLT PLN	NOTAM FILE CYQF
FIC	Edmonton 866-WXBRIEF (Toll free within Canada) or 866-541-4102 (Toll free within Canada & USA)
ACC	Edmonton IFR 888-358-7526 or 780-890-8304/8305
RWY DATA	Rwy 14(142°)/32(322°) 2950x75 turf
RCR	Opr Ltd win maint
LIGHTING	14-(TE ME), 32-(TE ME) ARCAL-123.2 type K
COMM	
ATF	tfc 123.2 5NM 6000 ASL



RIMBEY (HOSPITAL & CARE CENTRE) AB (Heli)

CRH5

REF	N52 38 26 W114 14 52 Adj NW 18°E UTC-7(6) Elev 3067' A5015 RCAP
OPR	David Thompson Health Region 403-843-2271 Cert PPR
FLT PLN	NOTAM FILE CYQF
FIC	Edmonton 866-WXBRIEF (Toll free within Canada) or 866-541-4102 (Toll free within Canada & USA)
ACC	Edmonton IFR 888-358-7526 or 780-890-8304/8305
PAD DATA	65' dia asphalt 86' dia. Acft max length 42.5'.
LIGHTING	RY(LO) PNR
COMM	
ATF	tfc 123.2 5NM centred on Rimby A/D 2.5NM N 6000 ASL
PRO	Arr/dep 158° & 299° fr heli; slope 16%. Rstd to multi-engine acft.
CAUTION	P-line marked with balls on 158° fit path.



CANADA FLIGHT SUPPLEMENT / GPH 205

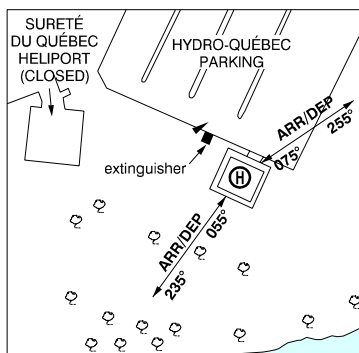
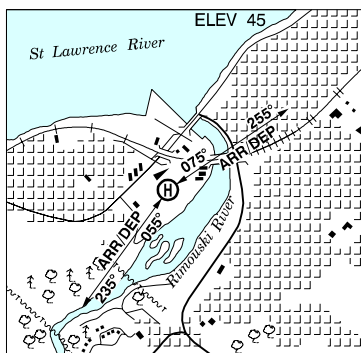
Effective 0901Z 20 November 2008 to 0901Z 15 January 2009

AERODROME/FACILITY DIRECTORY B765

RIMOUSKI QC

REF	N48 28 41 W68 29 49 1.8NE 19°W UTC-5(4) Elev 82' A5010 E-19 F-21 F-22 L07 CAP	
OPR	Muni 418-724-3177 Cert	
PF	A-1 B-2 C-3,4,5,6	
FLT PLN	(bil) NOTAM FILE CYYY Québec 866-GOMÉTÉO or 866-WXBRIEF (Toll free within Canada) or 866-541-4105 (Toll free within Canada & USA)	
ACC	Montréal 800-633-1353	
SERVICES	11-24Z† Mon-Fri, 1530-1830Z† Sat-Sun Call out chg may be levied for one or more svcs. 100LL, JA 418-725-7361	
FUEL	All	
OIL	1,4,6 Pilot lounge O/R 418-270-1923	
S		
PVT ADV	Petro-T 122.95 11-24Z† Mon-Fri, 1530-1830Z† Sat-Sun, O/T 418-725-7361 svc chg	
RWY DATA	Rwy 07(067°Y/25(247°) 4600x150 asphalt	
RCR	Opr 2 hrs PNR outside normal business hrs PLR/PCN	
LIGHTING	07-AS(TE LO), 25-AS(TE LO) ARCAL-122.1 type J	
COMM	(bil) Mont-Joli rdo 122.1 5NM joined to Mont-Joli MF circle by a corridor equal to the width of their diameter 3200 ASL (CAR 602.98), see Mont-Joli - Rimouski VTPC.	
NAV	NDB YXK 373 (L) N48 28 40 W68 30 11 at A/D VOR/DME MONT-JOLI YYY 115.9 Ch 106 N48 36 44 W68 12 32 257° 13.7NM to A/D	
PRO	Rgt hand circuits rwy 07 (CAR 602.96).	
CAUTION	Paramotors: Activities between St-Fabien, Rimouski, Mont-Joli and Matane, sfc up to 500'ASL ocsl 1200'ASL.	

RIMOUSKI (HYDRO-QUÉBEC) QC (Heli)



REF	N48 26 28 W68 32 33 Adj 19°W UTC-5(4) Elev 45' A5010
OPR	Hydro-Québec 418-724-1111 or 418-845-7000 Cert PPR

CANADA FLIGHT SUPPLEMENT / GPH 205

Effective 0901Z 20 November 2008 to 0901Z 15 January 2009

B766 AERODROME/FACILITY DIRECTORY

RIMOUSKI (HYDRO-QUÉBEC) QC (Heli) (Cont'd)

CSR4

FLT PLN	(bil) NOTAM FILE CYYY Québec 866-GOMÉTÉO or 866-WXBRIEF (Toll free within Canada) or 866-541-4105 (Toll free within Canada & USA)
PAD DATA	60' x 60' 12,000 lbs
COMM	(bil) Mont-Joli rdo 122.1 5NM joined to Mont-Joli MF circle by a corridor equal to the width of their diameter 3200 ASL (CAR 602.98), see Mont-Joli - Rimouski VTPC.
PRO	Arr/dep tracks 055°/235° & 255°/075°.
CAUTION	Paramotors: Activities between St-Fabien, Rimouski, Mont-Joli and Matane, sfc up to 500'ASL ocsl 1200'ASL.

RIVERTON MB

CKG2

REF	N50 58 18 W97 00 40 2S 4°E UTC-6(5) Elev 725' A5007 E-16 E-17	
OPR	Town of Riverton 204-378-2281 Reg	
PF	C-1,2,3,4,5	
FLT PLN	NOTAM FILE CYDN	
FIC	Winnipeg 866-WXBRIEF (Toll free within Canada) or 866-541-4103 (Toll free within Canada & USA)	
SERVICES		
FUEL	100LL PNR	
S	4,5,6	
RWY DATA	Rwy 17(176°)/35(356°) 3000x100 turf/gravel/snow	
RCR	Rick Eyolfson 204-378-2948	
LIGHTING	17-(RR), 35-(RR) ARCAL-122.8 type J opr strobe guide lgt rwy 35	
COMM		
ATF	UNICOM ltd hrs O/T tfc 122.8 5NM 3800 ASL	

RIVIÈRE-AUX-SAUMONS QC

CTH7

REF	N49 24 05 W62 17 44 1.5W 22°W UTC-5(4) Elev 394' A5011 E-11 F-22 CAP	
OPR	Safari Anticosti 418-763-9519, 418-726-3593 or 418-786-5788 Reg PPR	
PF	A-1	
FLT PLN	(bil) NOTAM FILE CYZV	
FIC	Québec 866-GOMÉTÉO or 866-WXBRIEF (Toll free within Canada) or 866-541-4105 (Toll free within Canada & USA)	
ACC	Montréal 800-633-1353	
RWY DATA	Rwy 10(103°)/28(283°) 5759x85 gravel Rwy 10 up 0.3%	
RCR	A/D closed from 2 Dec-14 May ctc Opr	

CANADA FLIGHT SUPPLEMENT / GPH 205

Effective 0901Z 20 November 2008 to 0901Z 15 January 2009

AERODROME/FACILITY DIRECTORY B767

RIVIÈRE-AUX-SAUMONS QC (Cont'd)

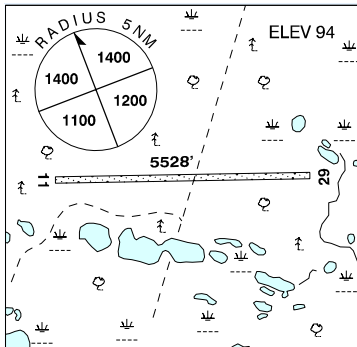
CTH7

COMM	(bil)
ATF	UNICOM ltd hrs O/T tfc 122.9 (May 15-Dec 1) 5NM 3400 ASL
CAUTION	Deer may be on the rwy.

RIVIÈRE BELL QC

CRB5

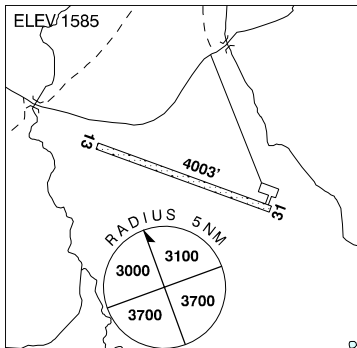
REF	N49 04 44 W62 14 13 21°W UTC-5(4) Elev 94' A5011 E-19 F-22
OPR	Pourvoirie Cerf-Sau d'Anticosti 514-252-5015 Reg
FLT PLN FIC	(bil) NOTAM FILE CYZV Québec 866-GOMÉTÉO or 866-WXBRIEF (Toll free within Canada) or 866-541-4105 (Toll free within Canada & USA)
RWY DATA RCR	Rwy 11/29 5528x80 gravel Opr No win maint



RIVIÈRE BONNARD QC

CRB4

REF	N50 42 16 W71 09 45 20°W UTC-5(4) Elev 1585' A5010
OPR	Société de protection des forêts contre le feu (SOPFEU) 418-871-3304 Ext 2625 Fax 418-874-2629 Reg PPR unattended
FLT PLN FIC	(bil) NOTAM FILE CYRJ Québec 866-GOMÉTÉO or 866-WXBRIEF (Toll free within Canada) or 866-541-4105 (Toll free within Canada & USA)
RWY DATA RCR	Rwy 13(129°)/31(309°) 4003x98 gravel Opr No win maint
COMM ATF	tfc 123.2 5NM 4600 ASL



CANADA FLIGHT SUPPLEMENT / GPH 205

Effective 0901Z 20 November 2008 to 0901Z 15 January 2009

B768 AERODROME/FACILITY DIRECTORY

RIVIÈRE-DU-LOUP QC

CYRI

REF	N47 45 52 W69 35 04 4.5SSW 19°W UTC-5(4) Elev 426' A5002 A5010 F-21 F-22 LO7 LO8 HI5 HI6 CAP	
OPR	Aéropro 418-867-5001 Reg	
PF	B-1 C-2,3,4,5	
FLT PLN	(bil) NOTAM FILE CYYY Québec 866-GOMÉTÉO or 866-WXBRIEF (Toll free within Canada) or 866-541-4105 (Toll free within Canada & USA)	
ACC	Montréal 800-633-1353	
SERVICES	13-22Z‡ Mar 1-May 31 & Sep 1-Nov 30; 13-23Z‡ Jun 1-Aug 31; 1330-2130Z Dec 1-Feb 28 O/T call out chg possible 418-867-5001/868-9338	
FUEL	100LL, JA-1	
OIL	80, 100, 15W50	
RWY DATA	Rwy 05(051°)/23(231°) 5981x150 asphalt Aéropro 418-867-5001 418-868-9338 Ltd win maint PLR/PCN	
LIGHTNG	05-(TE ME), 23-(T ME) ARCAL-122.8 type J	
COMM	(bil) UNICOM ltd hrs O/T tfc 122.8 5NM 3500 ASL Montréal Ctr 125.1 299.6	
NAV	NDB RI 201 (M) N47 45 49 W69 34 41 at A/D VOR YRI 113.9 N47 45 27 W69 35 23 at A/D	

RIVIÈRE-DU-LOUP QC (Helicopter)

CSS2

REF	N47 51 W69 32 19°W UTC-5(4) Elev 10' A5002 A5010
OPR	Canadian Coast Guard 418-648-7488 13-2130Z‡ Mon-Fri O/T 418-648-3599 or 800-463-4393 Reg PPR
FLT PLN	(bil) NOTAM FILE CYYY Québec 866-GOMÉTÉO or 866-WXBRIEF (Toll free within Canada) or 866-541-4105 (Toll free within Canada & USA)
PAD DATA	100' x 100'

CANADA FLIGHT SUPPLEMENT / GPH 205

Effective 0901Z 20 November 2008 to 0901Z 15 January 2009

AERODROME/FACILITY DIRECTORY B769

RIVIÈRE ROUGE / MONT-TREMBLANT INTL INC QC

CYFJ

REF	N46 24 34 W74 46 48 2.5N 15°W UTC-5(4) Elev 827' A5002 F-21 LO6 LO7 HI5 CAP RCAP	
OPR	Mont-Tremblant Intl 819-275-9099 Cert PPR 24 hrs	
PF	B-1,2 C-3,4,5	
CUST	AOE/15 888-226-7277 13-01Z‡	
FLT PLN	(bil) NOTAM FILE CYUL Québec 866-GOMÉTÉO or 866-WXBRIEF (Toll free within Canada) or 866-541-4105 (Toll free within Canada & USA)	
SERVICES		
FUEL	100LL, JA-1 (FSII) PPR	
OIL	20W50	
SUP FL	D-ice PPR	
RWY DATA	Rwy 03(026°)/21(206°) 5587x100 asphalt, centre 75' new asphalt, remaining 12.5' each side old pavement with numerous cracks and irregular surface. Closed turning areas at both ends of rwy. Rwy 03 up 0.9% first 1100'.	
RCR	819-425-7919	
LIGHTING	03-(TE ME), 21-(TE ME) O/R Opr	
COMM		
CLNC DEL	Prior dep pilots must ctc Montréal ACC for IFR clnc at 514-633-3038	
ATF	UNICOM (AU) ltd hrs O/T tfc 122.7 5NM 3900 ASL	
PRO	Rgt hand circuits rwy 21 (CAR 602.96). CYR 615 sfc to 1800 ASL E of rwy. Except for IFR traffic above 1200 ASL, no person shall operate an aircraft within the area described unless the flight has been authorized by the User/Controlling Agency.	
CAUTION	Seaplane activity on lake north of rwy.	

R.J. (BOB) ANDREW FIELD REGIONAL AB — See VIRDEN / R.J. (BOB) ANDREW FIELD REGIONAL

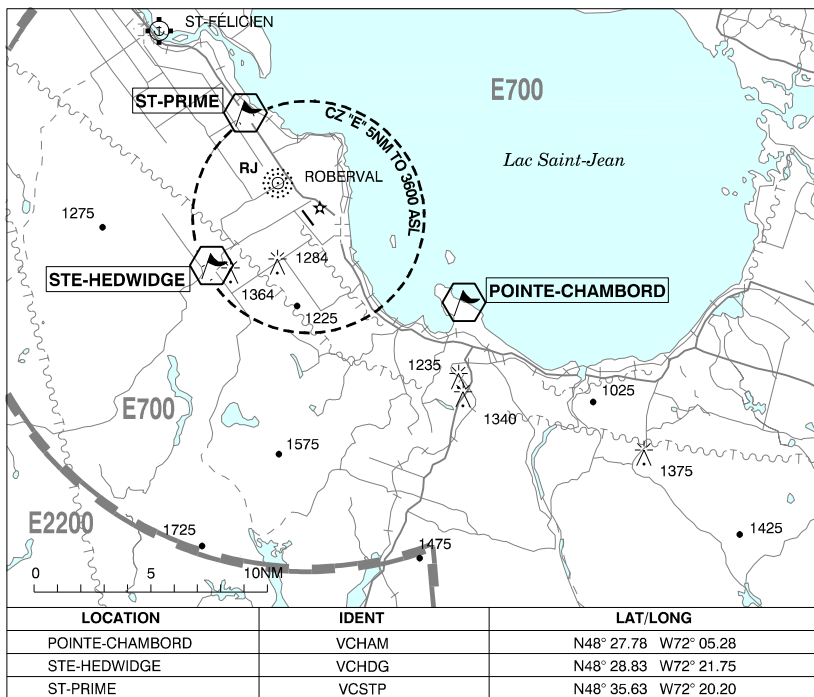
R.M. OF PIPESTONE MB — See RESTON / R.M. OF PIPESTONE

CANADA FLIGHT SUPPLEMENT / GPH 205

Effective 0901Z 20 November 2008 to 0901Z 15 January 2009

B770 AERODROME/FACILITY DIRECTORY

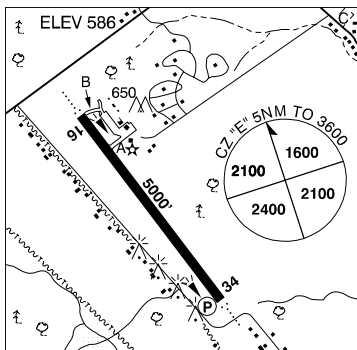
ROBERVAL VFR TERMINAL PROCEDURES CHART



ROBERVAL QC

CYRJ

REF	N48 31 12 W72 15 56 2W 18°W UTC-5(4) Elev 586' A5010 E-18 F-21 LO6 LO7 HI5 HI6 CAP
OPR	Services ADR Inc 418-275-2344 Cert
PF	A-1,6 C-2,3,4,5
FLT PLN	(bil) NOTAM FILE CYRJ Québec 866-GOMÉTÉO or 866-WXBRIEF (Toll free within Canada) or 866-541-4105 (Toll free within Canada & USA)
ACC	Montréal 800-633-1353
WX	METAR H24. TAF 13-03Z†, issue times: 13, 20Z (DT 12, 14, 20Z).
PIK	At terminal airside access
SERVICES	
FUEL	100LL, JA-1
OIL	All
S	1,2,3,4,5,6
PVT ADV	Air Bellevue 130.3 11-0130Z†



RWY DATA	Rwy 16(161°)/34(341°) 5000x150 asphalt
APRON	Advs Air Bellevue on 130.3 for prkg.
RCR	Opr CRFI RCR for MEDEVAC between 0130Z and 11Z 1 hr PNR 418-679-7133

CANADA FLIGHT SUPPLEMENT / GPH 205

Effective 0901Z 20 November 2008 to 0901Z 15 January 2009

AERODROME/FACILITY DIRECTORY B771

ROBERVAL QC (Cont'd)

CRYJ

LIGHTING	16-AO(TE ME), 34-AO(TE ME) P1 ARCAL-122.2 type K
COMM	(bil)
RCO	Rouyn rdo 122.2 (RAAS) 11-03Z± Québec rdo 123.55 5680 (FISE) 126.7 (bcst)
MF	Rouyn rdo 122.2 11-03Z± O/T tfc 5NM 3600 ASL (CAR 602.98)
NAV	
NDB	RJ 378 (M) N48 32 41 W72 17 40 161° 1.4NM to thld rwy 16
DME	IRJ 110.3 Ch 40 N48 31 37 W72 16 27 (610')
LOC	IRJ 110.3 (Rwy 16-34)
CAUTION	Powerline W of thld rwy 34 infringes lateral zoning.

ROBLIN MB

CKB7

REF	N51 14 04 W101 23 33 Adj W 9°E UTC-6(5) Elev 1821' A5006 A5007 E-16 LO4	
OPR	Roblin Aprt Comsn 204-937-4430 Fax 204-937-8496 Reg	
PF	B-1 C-2,4,5	
FLT PLN	NOTAM FILE CYDN	
FIC	Winnipeg 866-WXBRIEF (Toll free within Canada) or 866-541-4103 (Toll free within Canada & USA)	
SERVICES		
FUEL	100LL	
RWY DATA	Rwy 13(132°)/31(312°) 3510x75 asphalt	
RCR	B. Case 204-937-4755	
LIGHTING	13-(TE ME), 31-(TE ME) ARCAL-123.2 type K	
COMM		
ATF	tfc 123.2 5NM 4900 ASL	

ROCANVILLE SK

CKH2

REF	N50 27 53 W101 33 16 8NE 10°E UTC-6 Elev 1585' A5006 E-16 LO2 LO4	
OPR	Potash Corp of Saskatchewan 306-645-2870 Reg PPR	
PF	B-1	
FLT PLN	NOTAM FILE CYQV	
FIC	Edmonton 866-WXBRIEF (Toll free within Canada) or 866-541-4102 (Toll free within Canada & USA)	
SERVICES		
OIL	80, 100	
S	6	
RWY DATA	Rwy 12(127°)/30(307°) 3950x100 asphalt	
RCR	Opr Ltd win maint	

CANADA FLIGHT SUPPLEMENT / GPH 205

Effective 0901Z 20 November 2008 to 0901Z 15 January 2009

B772 AERODROME/FACILITY DIRECTORY

ROCANVILLE SK (Cont'd)

CKH2

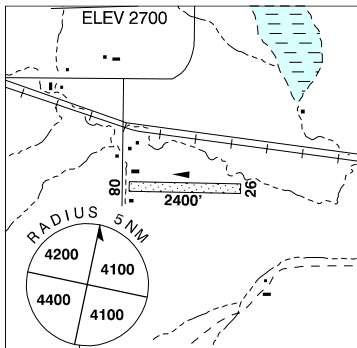
LIGHTING	12-(TE LO), 30-(TE LO) Lgt not avbl Oct-Apr.
COMM	
ATF	UNICOM ltd hrs O/T tfc 122.8 5NM 4600 ASL

ROCKCLIFFE ON — See OTTAWA / ROCKCLIFFE

ROCKGLEN SK

CKC7

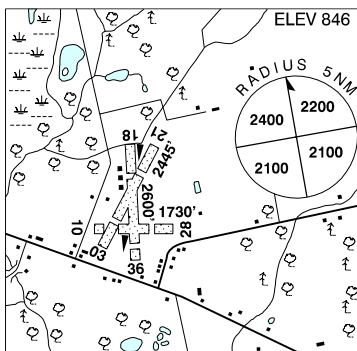
REF	N49 10 W105 56 1.2SE 12°E UTC-6 Elev 2700' A5006 E-16
OPR	Rockglen Council 306-476-2144 Reg
PF	C-1,2,4,5
FLT PLN	NOTAM FILE CYQR
FIC	Edmonton 866-WXBRIEF (Toll free within Canada) or 866-541-4102 (Toll free within Canada & USA)
RWY DATA	Rwy 08(078°)/26(258°) 2400x150 turf
RCR	Opr No win maint.
COMM	
ATF	tfc 123.2 5NM 5700 ASL



ROCKTON ON

CPT3

REF	N43 19 20 W80 10 35 1.5W 10°W UTC-5(4) Elev 846' VTA A5000 F-21
OPR	SOSA Gliding Club 519-740-9328 Reg PPR
PF	C-1,2 D-3,4,5,6
FLT PLN	NOTAM FILE CYKF
FIC	London 866-WXBRIEF (Toll free within Canada) or 866-541-4104 (Toll free within Canada & USA)
RWY DATA	Rwy 03/21 2445x200 turf Thld 03 displ 550'. Thld 21 displ 600'. Rwy 18/36 2600x200 turf Thld 18 displ 650'. Thld 36 displ 250'. Rwy 10/28 1730x200 turf Thld 10 displ 300'. Thld 28 displ 400'. Opr No win maint. Rws soft when wet & in spring.
RCR	
COMM	
ATF	UNICOM ltd hrs O/T tfc 122.825 5NM 3800 ASL
PRO	Rgt hand circuits for powered aircraft (CAR 602.96). Gliders std left hand circuits. Glider activity Apr-Nov. Significant glider activity by NOTAM.
CAUTION	Trees 60 AGL aprx 225' fr thld 21. Extv wind shear on apch rwy 21 with wind fr 210°. Wind blanking fr hg left side rwy on tkof rwy 36.



CANADA FLIGHT SUPPLEMENT / GPH 205

Effective 0901Z 20 November 2008 to 0901Z 15 January 2009

AERODROME/FACILITY DIRECTORY B773

ROCKYFORD AB

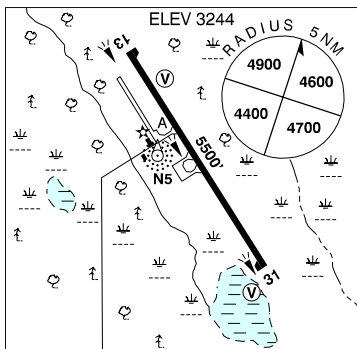
CFC6

REF	N51 16 W113 07 1.5NE 17°E UTC-7(6) Elev 2860' VTA A5005 E-15 E-16
OPR	Katterhagen Farms Ltd 403-533-2232 Reg
FLT PLN	NOTAM FILE CYBW
FIC	Edmonton 866-WXBRIEF (Toll free within Canada) or 866-541-4102 (Toll free within Canada & USA)
ACC	Edmonton IFR 888-358-7526 or 780-890-8304/8305
RWY DATA	Rwy 2500x50 turf
RCR	Opr
COMM	
ATF	tfc 123.2 5NM 5900 ASL

ROCKY MOUNTAIN HOUSE AB

CYRM

REF	N52 25 47 W114 54 15 3NNE 18°E UTC-7(6) Elev 3244' A5015 E-15 E-16 LO2 HI3 CAP RCAP
OPR	Town 403-845-4742 Reg
PF	B-1 C-1,4,5,6
FLT PLN	NOTAM FILE CYRM
FIC	Edmonton 866-WXBRIEF (Toll free within Canada) or 866-541-4102 (Toll free within Canada & USA)
ACC	Edmonton IFR 888-358-7526 or 780-890-8304/8305
WX	LWIS (Pvt) (see COMM)



SERVICES	
FUEL	100LL, JB with FSII, SP Shunda Fuels 403-845-2534
S	1,2,3,4,5,6
RWY DATA	Rwy 13(129°)/31(309°) 5500x100 asphalt
RCR	Opr PLR CRFI avbl ltd hrs.
LIGHTING	13-(TE ME) V2, 31-(TE ME) V2 ARCAL-122.8 type K
COMM	
ATF	tfc 122.8 5NM 6300 ASL
PAL	Edmonton Ctr 134.3
LWIS (Pvt)	122.55
NAV	
NDB	ROCKY TWO N5 224 (M) N52 25 47 W114 54 28 at A/D Pvt
VOR/DME	YRM 114.3 Ch 90 N52 30 08 W115 19 25 (3544') 090° 16NM to A/D
CAUTION	Extv aerobatic activity overhead the aprt extending to 1 NM E of rwy, sfc to 8000 ASL. Wildlife may be on or in vic rwy. Water bomber activity at or in vic of A/D Apr thru Sep.

CANADA FLIGHT SUPPLEMENT / GPH 205

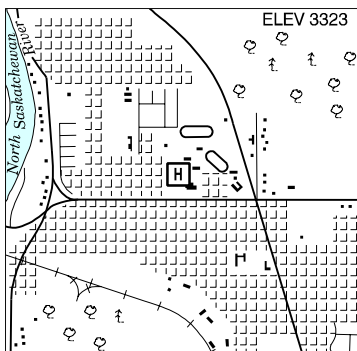
Effective 0901Z 20 November 2008 to 0901Z 15 January 2009

B774 AERODROME/FACILITY DIRECTORY

ROCKY MOUNTAIN HOUSE (GEN HOSP) AB (Heli)

CEU4

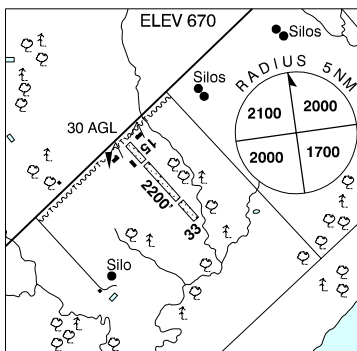
REF	N52 22 43 W114 55 12 18°E UTC-7(6) Elev 3323' A5015 RCAP
OPR	Rocky Mtn House Gen Hosp 403-845-3347 Cert PPR
FLT PLN	NOTAM FILE CYRM
FIC	Edmonton 866-WXBRIEF (Toll free within Canada) or 866-541-4102 (Toll free within Canada & USA)
ACC	Edmonton IFR 888-358-7526 or 780-890-8304/8305
PAD DATA	60' x 60' 100' x 100'
LIGHTING	RY(LO)
COMM	
ATF	tfc 122.8 5NM 6400 ASL
PRO	Arr/dep to/fr NE via lgtd arrow.
CAUTION	Bldg 3337 ASL, aprx 170° N heli, W side of flt path 001°.



RODNEY (NEW GLASGOW) ON

CPU3

REF	N42 31 53 W81 36 25 4SE 8°W UTC-5(4) Elev 670' A5000 F-21
OPR	Howard Faulkner 519-785-0856 Reg PPR
PF	B-1 C-2 D-3,4,5,6
FLT PLN	NOTAM FILE CYXU
FIC	London 866-WXBRIEF (Toll free within Canada) or 866-541-4104 (Toll free within Canada & USA)
SERVICES	PNR for all svcs.
FUEL	100LL
OIL	All
S	4,5
RWY DATA	Rwy 15/33 2200x80 turf Thld 15 displ 500'. Thld 33 displ 500'.
RCR	Opr Ltd win maint. Rwy soft when wet
LIGHTING	15-(LO), 33-(LO) ARCAL-123.2 type J PNR
COMM	
ATF	tfc 123.2 5NM 3700 ASL
CAUTION	P-line aprx 30 AGL, NW end aprx 100' fr thld 15 (yellow markers). Trees on apch to rwy 33. Trees adj W to rwy 15/33 within 100' rwy centreline.



CANADA FLIGHT SUPPLEMENT / GPH 205

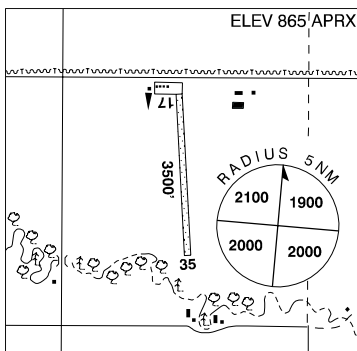
Effective 0901Z 20 November 2008 to 0901Z 15 January 2009

AERODROME/FACILITY DIRECTORY B775

ROLAND (GRAHAM FIELD) MB

CKD7

REF	N49 24 30 W97 59 26 4NW 5°E UTC-6(5) Elev 865' aprx VTA A5007 E-16 E-17
OPR	J.A. Graham 204-745-6000 Reg PPR
PF	B-1 D-2,3,4,5,6
FLT PLN	NOTAM FILE CYDN FIC Winnipeg 866-WXBRIEF (Toll free within Canada) or 866-541-4103 (Toll free within Canada & USA)
SERVICES	
OIL	65, 80, 100
RWY DATA	Rwy 17(172°)/35(352°) 3500x70 turf RCR Opr Ltd win maint
COMM	
ATF	Roland tfc 123.2 5NM 3900 ASL
CAUTION	Trees 350' S of thld rwy 35.



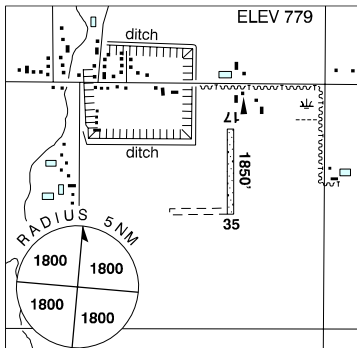
ROLPH ON See DEEP RIVER / ROLPH

RONAN ON — See TOTTENHAM / RONAN

ROSENORT MB

CKJ2

REF	N49 27 11 W97 25 21 Adj SE 5°E UTC-6(5) Elev 779' VTA A5007 E-16 E-17
OPR	H. Thiesen 204-746-8690/6736 Reg
PF	C-1,2
FLT PLN	NOTAM FILE CYDN FIC Winnipeg 866-WXBRIEF (Toll free within Canada) or 866-541-4103 (Toll free within Canada & USA)
RWY DATA	Rwy 17(175°)/35(355°) 1850x40 turf/gravel, centre 18' gravel RCR Opr Ltd win maint.
LIGHTING	17-(LO), 35-(LO) O/R Opr
COMM	
ATF	tfc 123.2 5NM 3800 ASL



CANADA FLIGHT SUPPLEMENT / GPH 205

Effective 0901Z 20 November 2008 to 0901Z 15 January 2009

8776 AERODROME/FACILITY DIRECTORY

ROSETOWN SK

CJX4

REF	N51 33 52 W107 55 06 3NE 14°E UTC-6 Elev 1920' A5006 E-16 LO2	
OPR	Town 306-882-2214/2142 306-831-7386 Reg PNR	
PF	C-1,2,4,5	
FLT PLN	NOTAM FILE CYXE Edmonton 866-WXBRIEF (Toll free within Canada) or 866-541-4102 (Toll free within Canada & USA)	
SERVICES	S 1,4,5	
RWY DATA	Rwy 07(076°)/25(256°) 2575x75 asphalt	
RCR	Opr	
LIGHTING	07-(TE LO), 25-(LO) ARCAL-122.8 type J. Rwy lgts positioned 15' outside of rwy edge.	
COMM	ATF tfc 122.8 5NM 5000 ASL	
PRO	Periodic extv model acft activity. Activate ARCAL & overfly the A/D at 1000 AGL prior to ldg.	
CAUTION	Ocsl severe turbulence caused by elevator when wind from N or NW.	

ROSS INTL AB — See COUTTS / ROSS INTL

ROSS RIVER YT

CYDM

REF	N61 58 14 W132 25 20 1S 26°E UTC-8(7) Elev 2314' A5028 D-12 RCAP	
OPR	Govt of Yukon 867-634-2450 or 867-969-2241/2246 Reg	
PF	A-1 C-2,4,5	
FLT PLN	NOTAM FILE CYDM Whitehorse 866-WXBRIEF (Toll free within Canada) or 866-541-4107 (Toll free within Canada & USA)	
ACC	Edmonton IFR 888-358-7526 or 780-890-8304/8305	
SERVICES	S 4,5,6	
RWY DATA	Rwy 08(085°)/26(265°) 5113x100 gravel	
RCR	Opr Ltd win maint.	
COMM	ATF tfc 123.2 5NM 5400 ASL	
CAUTION	High gnd penetrates apch slope aprx 2NM fr thld of rwy 26. Soft spots & depression thld 26 200' long.	

CANADA FLIGHT SUPPLEMENT / GPH 205

Effective 0901Z 20 November 2008 to 0901Z 15 January 2009

AERODROME/FACILITY DIRECTORY B777

ROUGEMONT QC

CYT5

REF	N45 26 18 W73 02 16 16°W UTC-5(4) Elev 80' VTA A5002	
OPR	Helico Services Inc 450-469-1430/ 777-2074 Reg PPR	
PF	A-1 C-2,3,4,5,6	
FLT PLN	(bil) NOTAM FILE CYUL FIC Québec 866-GOMÉTÉO or 866-WXBRIEF (Toll free within Canada) or 866-541-4105 (Toll free within Canada & USA) ACC Montréal 514-633-3211 or 800-633-1353, all Flt Plns, IFR tng PPR. Flt Plns by Fax at 514-633-2877 & include phone numbers where pilot can be reached prior to dep. IFR clearance or activation 514-633-3271.	
SERVICES	S 1,2,4,5,6	
RWY DATA	Rwy 06/24 2200x65 grass	
RCR	Opr No win maint	
LIGHTING	LO non-std O/R	
COMM	ATF tfc 123.2 5NM 3100 ASL	
PRO	Rgt hand circuits rwy 06 (CAR 602.96)	
CAUTION	Wildlife: Possibility of animals on rwy. Traffic: Possibility of heli movements near rwy. Airspace: A/D within CYA 623(H), sfc to 3000 ASL, cont daylight.	

ROUND LAKE (WEAGAMOW LAKE) ON

CZRJ

REF	N52 56 37 W91 18 46 1E 2°W UTC-6(5) Elev 974' A5017 E-17 LO3 CAP RCAP	
OPR	Govt of Ontario 807-473-2082 Cert	
PF	C-1,4	
FLT PLN	NOTAM FILE CYXL FIC Winnipeg 866-WXBRIEF (Toll free within Canada) or 866-541-4103 (Toll free within Canada & USA)	
SERVICES	FUEL 100LL PNR 807-469-1269	
RWY DATA	Rwy 03(026°)/21(206°) 3500x100 gravel Rwy 03 up 0.55%	
RCR	APM 807-469-5221 14-23Z† Mon-Fri exc hols. Rwy strength & cond subject to seasonal and/or climatic variations.	
LIGHTING	03-(TE ME) AP, 21-(TE ME) AP ARCAL-123.2 type K	
COMM	ATF Round Lake tfc 123.2 5NM 4000 ASL	
NAV	NDB ZRJ 236 (L) N52 56 56 W91 19 26 130° 0.5NM to A/D Unmonitored	

CANADA FLIGHT SUPPLEMENT / GPH 205

Effective 0901Z 20 November 2008 to 0901Z 15 January 2009

B778 AERODROME/FACILITY DIRECTORY

ROUYN-NORANDA QC

CYUY

REF	N48 12 22 W78 50 08 7.5ESE 13°W UTC-5(4) Elev 988' A5009 E-18 F-21 LO4 LO7 HI1 HI4 HI5 CAP	
OPR	Muni 819-762-8171 (administration), 819-797-7141 (operation) Cert	
PF	A-1,2,3,6 C-5 D-4	
FLT PLN	(bil) NOTAM FILE CYUY FIG Québec 866-GOMÉTÉO or 866-WXBRIEF (Toll free within Canada) or 866-541-4105 (Toll free within Canada & USA) ACC Montréal 800-633-1353 WX METAR H24. TAF H24, issue times: 00, 06, 12, 18Z. PIK ATB, airside access	
SERVICES	12-02Z± Mon-Fri, 1330-22Z± Sat-Sun O/T call out chg 1 hr PNR 819-762-0811 FUEL 100LL, JA-1 OIL All S 1,2,4,5	
RWY DATA	Rwy 08(077°)/26(257°) 7500x150 asphalt RCR Opr 11-04Z± Mon-Fri, 11-02Z± Sat, 12-04Z± Sun, O/T 1 hr PNR for CFRI & 2 hrs PNR for win maint call out chg 888-333-0273 PLR/PCN	
LIGHTING	08-AO(TE ME) P2, 26-AO(TE ME) P2	
COMM	(bil) RADIO Rouyn 122.2 (V) (emerg only 819-764-4664) RCO Québec 123.475 (FISE) 126.7 (bcst) MF rdo 122.2 5NM 4000 ASL (CAR 602.98) VDF 122.2	
NAV	NDB Rouyn YUY 218 (M) N48 10 22 W78 56 19 077° 4.0NM to thld rwy 08 DME Rouyn IUY 109.9 Ch 36 N48 12 40 W78 49 06 (1004') LOC IUY 109.9 (Rwy 08-26)	

ROUYN FSS – RCO

Chibougamau 122.0 (RAAS) 11-01Z± (N49 47 W74 32)

Roberval 122.2 (RAAS) 11-03Z± (N48 31 W72 15)

St-Hubert 118.4 (RAAS) 05-1045Z± Apr-Oct, 04-1045Z± Nov-Mar (N45 31 W73 25)

Val-d'Or 118.5 (RAAS) 0325-1030Z± (N48 03 W77 47)

CANADA FLIGHT SUPPLEMENT / GPH 205

Effective 0901Z 20 November 2008 to 0901Z 15 January 2009

AERODROME/FACILITY DIRECTORY B779

RUSSELL MB

CJW5

REF	N50 45 57 W101 17 42 Adj SW 9°E UTC-6(5) Elev 1825' A5007 E-16 LO4 CAP	
OPR	Russell Flying Club 204-773-2707 Reg	
PF	B-1 C-2,3,4,5	
FLT PLN	NOTAM FILE CYBR FIC Winnipeg 866-WXBRIEF (Toll free within Canada) or 866-541-4103 (Toll free within Canada & USA)	
SERVICES		
FUEL OIL S	100LL All 1,2,3,4,5,6	
RWY DATA	Rwy 17(167°)/35(347°) 3400x75 asphalt Rwy 14(140°)/32(320°) 1900x75 turf/snow RCR Triple D Aviation 204-773-2051 Rwy 14/32 no win maint, ltd sum maint, may be u/s dur spring.	
LIGHTING	17-(TE LO), 35-(TE LO) Lgt on SS to SR	
COMM	ATF UNICOM 14-23Z‡ Mon-Fri, O/T tfc 122.8 5NM 4900 ASL	
NAV	NDB 3Z 263 (L) N50 45 51 W101 17 47 at A/D Pvt Unmonitored	