

# CANADA FLIGHT SUPPLEMENT / GPH 205

Effective 0901Z 20 November 2008 to 0901Z 15 January 2009

AERODROME/FACILITY DIRECTORY B671

**PABOK QC** — See DU ROCHER-PERCÉ (PABOK)

Sep 09

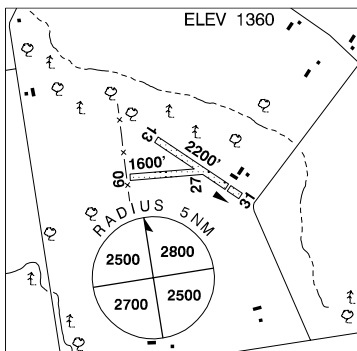
## PACIFIC RADIO – RCO (KAMLOOPS FIC)

- Abbotsford** 122.5 (FISE) 126.7 (FISE) (N49 02 W122 22)
- Bella Bella (Campbell Island)** 126.7 (FISE) (N52 11 W128 09)
- Bella Coola** 126.7 (FISE) (N52 23 W126 35)
- Burns Lake** 126.7 (FISE) (N54 15 W125 43)
- Campbell River** 126.7 (FISE) (N49 57 W125 16)
- Castlegar** 126.7 (FISE) (N49 18 W117 38)
- Cranbrook/Canadian Rockies Intl** 123.275 (FISE) 126.7 (bcst) (N49 37 W115 47)
- Ethelda Bay** 126.7 (FISE) (N53 05 W129 40)
- Fernie** 126.7 (FISE) (N49 27 W114 59)
- Golden** 126.7 (FISE) DRCO (N51 18 W116 59)
- Grand Forks** 126.7 (FISE) (N49 05 W118 37)
- Hope** 126.7 (FISE) (N49 23 W121 25)
- Invermere** 126.7 (FISE) DRCO (N50 29 W115 57)
- Kamloops** 123.375 (FISE) 126.7 (bcst) (N50 42 W120 27)
- Kelowna** 126.7 (FISE) (N49 56 W119 22)
- Lytton** 126.7 (FISE) (N50 15 W121 35)
- Mackenzie** 126.7 (FISE) (N55 02 W122 54)
- Nanaimo** 126.7 (FISE) (N49 03 W123 52)
- Nelson** 126.7 (FISE) (N49 29 W117 17)
- Oliver** 126.7 (FISE) (N49 03 W119 31)
- Penticton** 122.5 (FISE) 126.7 (FISE) (N49 28 W119 36)
- Port Hardy** 126.7 (FISE) (N50 41 W127 22)
- Prince George** 122.1 (FISE) 126.7 (FISE) (N53 53 W122 41)
- Prince Rupert** 123.275 (FISE) 126.7 (bcst) (N54 17 W130 27)
- Princeton** 126.7 (FISE) (N49 28 W120 30)
- Puntzi Mountain** 126.7 (FISE) DRCO (N52 10 W12412)
- Revelstoke** 126.7 (FISE) (N50 58 W118 11)
- Smithers** 126.7 (FISE) (N54 49 W127 11)
- Terrace** 126.7 (FISE) (N54 28 W128 35)
- Tofino** 126.7 (FISE) (N49 05 W125 51)
- Vancouver Intl** 123.15 (FISE) (N49 12 W123 11)
- Victoria Harbour** 126.7 (FISE) (N48 25 W123 23)
- Victoria Intl** 122.375 (FISE) 126.7 (bcst) (N48 46 W123 31)
- Williams Lake** 126.7 (FISE) (N52 11 W122 03)

## PALMERSTON ON

CPR3

<b>REF</b>	N43 51 13 W80 46 49 3E 9°W UTC-5(4) Elev 1360' A5000 F-21
<b>OPR</b>	F. Spoelstra 519-343-5626 Reg
<b>PF</b>	B-1 C-2,3,4,5,6
<b>FLT PLN</b>	NOTAM FILE CYKF
<b>FIC</b>	London 866-WXBRIEF (Toll free within Canada) or 866-541-4104 (Toll free within Canada & USA)
<b>RWY DATA</b>	Rwy 13/31 2200x75 turf Thld 31 displ 300'
<b>RCR</b>	Rwy 09/27 1600x50 turf Opr No win maint. Rwy soft dur spring thaw.
<b>COMM</b>	
<b>ATF</b>	tfc 123.2 5NM 4400 ASL



**CAUTION** Varying rwy gradient rwy 13/31. Bldgs 50 AGL on apch rwy 27, 600' fr thld. Seasonal crops up to 6 AGL at thld rwy 09. Tow plane & hang glider activity.

# CANADA FLIGHT SUPPLEMENT / GPH 205

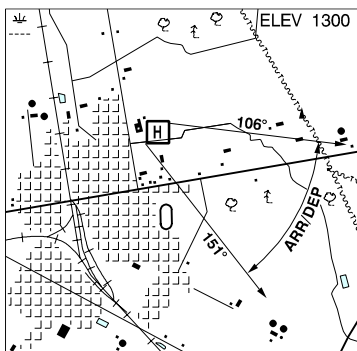
Effective 0901Z 20 November 2008 to 0901Z 15 January 2009

## B672 AERODROME/FACILITY DIRECTORY

### PALMERSTON (DISTRICT HOSP) ON (Heli)

CPA3

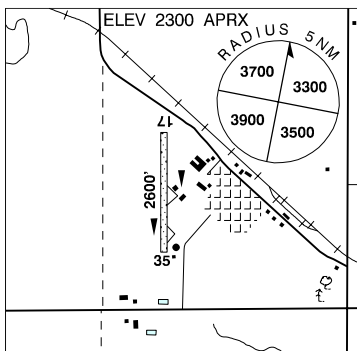
<b>REF</b>	N43 50 18 W80 50 31 Adj NE 9°W UTC-5(4) Elev 1300' VTA A5000
<b>OPR</b>	Palmerston & District Hosp 519-343-2030 Cert PPR
<b>FLT PLN</b> <b>FIC</b>	NOTAM FILE CYKF London 866-WXBRIEF (Toll free within Canada) or 866-541-4104 (Toll free within Canada & USA)
<b>PAD DATA</b>	86' x 86' asphalt 114' x 114' Rstd max heli length 57.5'
<b>LIGHTING</b>	RY(LO) RF(FL)
<b>PRO</b>	Arr/dep btwn 106°-151° fr heli.



### PANGMAN SK

CKC9

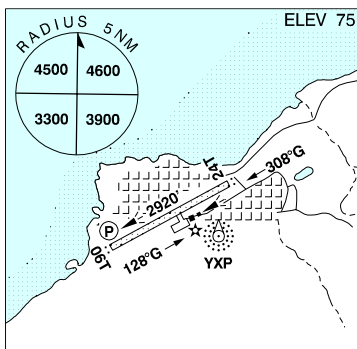
<b>REF</b>	N49 38 47 W104 39 56 Adj NW 11°E UTC-6 Elev 2300' aprx A5006 E-16
<b>OPR</b>	R.M. of Norton #69 306-442-2131 Reg
<b>PF</b>	C-1,2,4
<b>FLT PLN</b> <b>FIC</b>	NOTAM FILE CYQR Edmonton 866-WXBRIEF (Toll free within Canada) or 866-541-4102 (Toll free within Canada & USA)
<b>RWY DATA</b> <b>RCR</b>	Rwy 17(169°)/35(349°) 2600x100 turf Wilfred Pingert 306-442-2152 No win maint
<b>COMM</b> <b>ATF</b>	tfc 123.2 5NM 5300 ASL
<b>PRO</b>	Rgt hand circuits rwy 17 (CAR 602.96).



### PANGNIRTUNG NU

CYXP

<b>REF</b>	N66 08 42 W65 42 49 38°W GV28°E UTC-5(4) Elev 75' A5039 C-12 LO5 HI1 CAP
<b>OPR</b>	Govt of Nunavut, Iqaluit 867-897-3606 Cert
<b>PF</b>	A-1 CARS ops hrs O/T PNR C-2,4,5
<b>FLT PLN</b> <b>FIC</b>	NOTAM FILE CYXP North Bay 866-WXBRIEF (Toll free within Canada) or 866-541-4109 (Toll free within Canada & USA)
<b>CARS</b> <b>WX</b>	867-473-8907 ltd hrs (see COMM) METAR dur CARS hrs O/T Legacy LWIS (see COMM) TAF 14-23Z†, Mon-Fri, issue times: 1340Z†, 18Z†; 17-20Z† Sat, issue time: 1640Z†; 18-20Z† Sun, issue time: 1740Z†



# CANADA FLIGHT SUPPLEMENT / GPH 205

Effective 0901Z 20 November 2008 to 0901Z 15 January 2009

AERODROME/FACILITY DIRECTORY B673

## PANGNIRTUNG NU (Cont'd)

CYXP

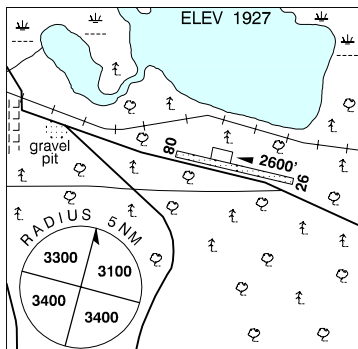
<b>SERVICES</b>	
<b>FUEL</b>	JA-1 867-473-8936/8970 13-23Z Mon-Fri, 14-23Z Sat O/T call out chg PNR 867-473-8936/8970 or 867-473-8235/8047. Credit card accepted.
<b>RWY DATA</b>	Rwy 06T(062°T)/24T(242°T) 2920x100 gravel First 600' rwy 06T up 1.45%, first 800' rwy 24T up 1.14%.
<b>RCR</b>	CARS A/D maint avbl 13-22Z± Mon-Fri exc hols O/T PNR 867-473-8953. Call out chg rqrd.
<b>LIGHTING</b>	06T-AS(TE ME) AP, 24T-AS(TE ME) ARCAL-122.1 type K
<b>COMM</b>	
<b>MF</b>	aprt rdo ltd hrs O/T tfc 122.1 5NM 3100 ASL (CAR 602.98)
<b>APRT RDO</b>	122.1 (V) 12-23Z± Mon-Fri, 15-20Z± Sat, 17-21Z± Sun
<b>Legacy LWIS</b>	125.1
<b>NAV</b>	
<b>NDB</b>	YXP 218 (M) N66 08 38 W65 42 22 at A/D Unmonitored when CARS clsd
<b>CAUTION</b>	Only pilots with considerable experience in area should plan on using this aprt due to sur terrain & variable lcl cond. Severe turbulence may be encountered. Sur terrain may constitute a hazard to ngt flying. Rwy edge lgt installed higher than std (aprx 27 inches high loc 5' outside rwy edge).

**PAQUET QC** — See ST-RAYMOND / PAQUET

## PARADISE HILL SK

CJE6

<b>REF</b>	N53 32 07 W109 26 02 Adj SE 15°E UTC-6 Elev 1927' A5015 E-16
<b>OPR</b>	Village 306-344-2206 Reg
<b>PF</b>	C-1,2,4,5
<b>FLT PLN</b>	NOTAM FILE CYLL
<b>FIC</b>	Edmonton 866-WXBRIEF (Toll free within Canada) or 866-541-4102 (Toll free within Canada & USA)
<b>SERVICES</b>	
<b>S</b>	4,5
<b>RWY DATA</b>	Rwy 08(087°)/26(267°) 2600x75 oiled gravel
<b>RCR</b>	Mr. D. Palsich 306-344-2013
<b>COMM</b>	
<b>ATF</b>	tfc 123.2 5NM 5000 ASL



# CANADA FLIGHT SUPPLEMENT / GPH 205

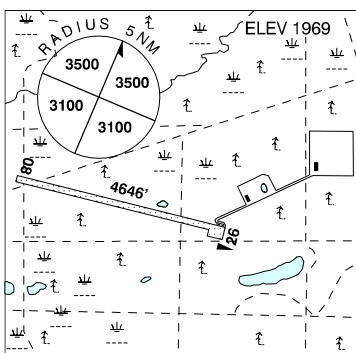
Effective 0901Z 20 November 2008 to 0901Z 15 January 2009

B674 AERODROME/FACILITY DIRECTORY

## PARAMOUNT BISTCHO AB

CPB8

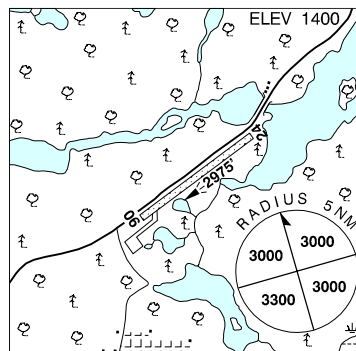
<b>REF</b>	N59 38 18 W118 19 59 Adj 23°E UTC-7(6) Elev 1969' A5022 D-13 LO5 RCAP
<b>OPR</b>	Paramount Resources Ltd 403-210-1108 Reg PPR
<b>FLT PLN</b>	NOTAM FILE CYOJ
<b>FIC</b>	Edmonton 866-WXBRIEF (Toll free within Canada) or 866-541-4102 (Toll free within Canada & USA)
<b>ACC</b>	Edmonton IFR 888-358-7526 or 780-890-8304/8305
<b>RWY DATA</b>	Rwy 08(082°)/26(262°) 4646x100 gravel Rwy 08 up 1.05%
<b>RCR</b>	Opr
<b>COMM</b>	
<b>ATF</b>	UNICOM (AU) ltd hrs O/T tfc 123.2
<b>LIGHTING</b>	08-(TE LO), 26-(TE LO) ARCAL-123.2 type J
<b>CAUTION</b>	Hydrogen sulphide (H <sub>2</sub> S) gas present in oil field in area surrounding A/D.



## PARENT QC

CYPP

<b>REF</b>	N47 55 55 W74 36 29 16°W UTC-5(4) Elev 1400' A5002 A5009 F-21 LO6 LO7
<b>OPR</b>	Muni 819-667-2323 Reg
<b>PF</b>	C-1,2,3,5,6
<b>FLT PLN</b>	(bil) NOTAM FILE CYRJ
<b>FIC</b>	Québec 866-GOMÉTÉO or 866-WXBRIEF (Toll free within Canada) or 866-541-4105 (Toll free within Canada & USA)
<b>RWY DATA</b>	Rwy 06/24 2975x75 gravel
<b>RCR</b>	Opr 819-667-2211 Ltd win maint Soft rwy shoulders
<b>LIGHTING</b>	06-(TE LO), 24-(TE LO) ARCAL-123.2 type J
<b>COMM</b>	(bil)
<b>ATF</b>	tfc 123.2 5NM 4400 ASL
<b>NAV</b>	
<b>NDB</b>	YPP 303 (M) N47 53 22 W74 40 19 056° 3.5NM to A/D.
<b>PRO</b>	Rgt hand circuits rwy 24 (CAR 602.96).



# CANADA FLIGHT SUPPLEMENT / GPH 205

Effective 0901Z 20 November 2008 to 0901Z 15 January 2009

AERODROME/FACILITY DIRECTORY B675

## PARRY SOUND AREA MUNI ON

CNK4

<b>REF</b>	N45 15 27 W79 49 47 12SE 11°W UTC-5(4) Elev 832' A5000 F-21 LO4 LO6 CAP	
<b>OPR</b>	Airport Commission 705-378-2897 Reg 13-01Z† Jun-Aug; 14-23Z† May & Sep; 14-22Z† Apr & Oct; 14-21Z† Nov-Mar	
<b>PF</b>	A-1,2 C-5 D-3,4,6	
<b>FLT PLN</b>	NOTAM FILE CYQA	
<b>FIC</b>	London 866-WXBRIEF (Toll free within Canada) or 866-541-4104 (Toll free within Canada & USA)	
<b>SERVICES</b>	Call out chg may be levied for one or more svcs	
<b>FUEL</b>	100LL, JA-1	
<b>OIL</b>	65, 80, 100, 15W50	
<b>S</b>	1,2,3,4,5,6	
<b>RWY DATA</b>	Rwy 17(171°)/35(351°) 4000x75 asphalt	
<b>RCR</b>	Opr	
<b>LIGHTING</b>	17-(TE ME), 35-AS(TE ME) AP 3.5° ARCAL-122.8 type J (also abn)	
<b>COMM</b>		
<b>ATF</b>	UNICOM ltd hrs O/T tfc 122.8 5NM 3800 ASL	
<b>NAV</b>		
<b>NDB</b>	GEORGIAN BAY F7 353 (M) N45 16 08 W79 50 12 0.8NM to A/D Pvt Unmonitored	
<b>PRO</b>		
<b>HELI</b>	Apch/dep shall be to/from the rwy with air taxiing via the twy to/from the apron.	
<b>CAUTION</b>	Wildlife in vic of rwy. Vehicles frequently use access road to Roberts Lake off thld 35. Floatplane tfc in vic of Roberts Lake. Flt tng in vic of A/D.	

## PARRY SOUND MEDICAL ON (Heli)

CRS2

<b>REF</b>	N45 20 30 W80 01 00 11°W UTC-5(4) Elev 800' A5000	
<b>OPR</b>	Parry Sound Ambulance 705-746-8440 Cert PPR	
<b>PF</b>	C-1,2,3,4,5	
<b>FLT PLN</b>	NOTAM FILE CYQA	
<b>FIC</b>	London 866-WXBRIEF (Toll free within Canada) or 866-541-4104 (Toll free within Canada & USA)	
<b>PAD DATA</b>	86' dia 114' dia asphalt Max heli length 57.25'	
<b>RCR</b>	Opr	
<b>LIGHTING</b>	RY(LO) RF(FL) ARCAL 123.05 key mic 3 times to activate.	
<b>PRO</b>	Arr/dep 295°-350° fr heli.	
<b>CAUTION</b>	Chimney 895 ASL 130' SW helipad, painted & lgtd.	

# CANADA FLIGHT SUPPLEMENT / GPH 205

Effective 0901Z 20 November 2008 to 0901Z 15 January 2009

B676 AERODROME/FACILITY DIRECTORY

## PATUANAK SK

CKB2

<b>REF</b>	N55 54 00 W107 43 14 Adj S 14°E UTC-6 Elev 1426' A5015 E-16	
<b>OPR</b>	Ministry of Hwys & Infrastructure 306-953-3263 Reg	
<b>PF</b>	C-1	
<b>FLT PLN</b>	NOTAM FILE CYSF Edmonton 866-WXBRIEF (Toll free within Canada) or 866-541-4102 (Toll free within Canada & USA)	
<b>RWY DATA</b>	Rwy 14(140°)/32(320°) 3000x75 gravel	
<b>RCR</b>	Area office 306-235-1730 or Opr Ltd win maint Rwy strength & cond subject to seasonal and/or climatic variations.	
<b>LIGHTING</b>	14-(TE LO), 32-(TE LO) ARCAL-123.2 type J	
<b>COMM</b>		
<b>ATF</b>	tfc 123.2 5NM 4500 ASL	

## PAULATUK NT

CYPC

<b>REF</b>	N69 21 38 W124 04 33 32°E GV156°E UTC-7(6) Elev 15' A5041 C-10 LO5 CAP	
<b>OPR</b>	Govt of Northwest Territories 867-977-2658 Emerg/Incident rpt ctc Govt of Northwest Territories 877-989-1400 Cert	
<b>PF</b>	C-1,4,5	
<b>FLT PLN</b>	NOTAM FILE CYPC North Bay 866-WXBRIEF (Toll free within Canada) or 866-541-4109 (Toll free within Canada & USA)	
<b>ACC</b>	Edmonton IFR 888-358-7526 or 780-890-8304/8305	
<b>CARS</b>	867-580-3111 Ltd hrs	
<b>WX</b>	METAR dur CARS hrs ops. TAF 16-24Z† Mon-Sat, issue times: 16,19Z (DT 15, 19Z). TAF 16-19Z† Sun, issue times: 16Z†.	
<b>SERVICES</b>	Call out chg may be levied for svcs	
<b>FUEL</b>	JA ctc aprt rdo O/T 2 hr PNR Southwind Gen Contracting 867-580-3002/3023/3037 Fax 867-580-3003	
<b>RWY DATA</b>	Rwy 02T(021°T)/20T(201°T) 4000x100 gravel Opr Win maint avbl 16-24Z† Mon-Fri exc hols O/T 1 hr PNR 867-580-3531/3037/3095, 403-462-1526. Call out chg may be levied. PLR/PCN	
<b>LIGHTING</b>	02T-AS(TE ME) AP, 20T-AS(TE ME) AP ARCAL-122.1 type K key mic 7 times for AS APAPI avbl only dur CARS hrs ops (see COMM)	
<b>COMM</b>		
<b>MF</b>	aprt rdo ltd hrs O/T tfc 122.1 5NM 3100 ASL (CAR 602.98)	
<b>APRT RDO</b>	122.1 (V) 14-24Z† Mon-Sat, 14-19Z† Sun.	

# CANADA FLIGHT SUPPLEMENT / GPH 205

Effective 0901Z 20 November 2008 to 0901Z 15 January 2009

AERODROME/FACILITY DIRECTORY B677

## PAULATUK NT (Cont'd)

CYPC

<b>NAV</b>	<b>NDB</b> YPC 276 (M) N69 21 03 W124 04 31 360°T 0.6NM to A/D Unmonitored when CARS clsd.
<b>CAUTION</b>	Subsidence, turbulence, and adverse cross-wind cond may be encountered.

## PEACE RIVER AB

CYPE

<b>REF</b>	N56 13 37 W117 26 50 5W 20°E UTC-7(6) Elev 1873' A5014 A5022 A5023 D-13 E-15 LO1 HI2 HI3 CAP	
<b>OPR</b>	Town 780-624-2867 Cert	
<b>PF</b>	A-1,3,6 D-1,2,3,4,5,6	
<b>FLT PLN</b>	NOTAM FILE CYPE	
<b>FIG</b>	Edmonton 866-WXBRIEF (Toll free within Canada) or 866-541-4102 (Toll free within Canada & USA)	
<b>ACC</b>	Edmonton IFR 888-358-7526 or 780-890-8304/8305	
<b>WX</b>	METAR H24.	
<b>PIK</b>	TAF H24, issue times: 01, 07, 13, 19Z. ATB, departure lounge, airside access.	
<b>SERVICES</b>	Call out chg may be levied for one or more svcs.	
<b>FUEL</b>	100, JA, HPR	
<b>OIL</b>	14W50, 2380	
<b>S</b>	1,2,3,4,5,6	
<b>SUP FL</b>	D-ice, HPOX (Northern Air 780-624-1911)	
<b>PVT ADV</b>	Northern Air Charter 129.25	
<b>RWY DATA</b>	Rwy 04(040°)/22(220°) 5000x150 asphalt Rwy 08(082°)/26(262°) 1900x150 turf Rwy 08/26 clsd Nov 1-May 31; soft dur springtime.	
<b>TWY</b>	Twy C uncontrolled	
<b>RCR</b>	Opr, Win maint 13-24Z± Mon-Fri, Nov 1-Mar 31; Sum maint 13-22Z± Mon-Fri, Apr 1-Oct 31; O/T call 780-625-8667. PLR/PCN	
<b>LIGHTING</b>	04-AO(TE ME) P2, 22-AO (non-std 2600') (TE ME) P2	
<b>COMM</b>	<b>RADIO</b> 122.0 (V) (emerg only 780-624-5142) <b>RCO</b> Edmonton rdo 123.275 (FISE) 126.7 (FISE) <b>MF</b> rdo 122.0 5NM 4900 ASL (CAR 602.98) <b>PAL</b> Edmonton Ctr 135.275	
<b>NAV</b>	<b>NDB</b> PE 287 (L) N56 12 00 W117 31 55 040° 2.8NM to A/D <b>VOR/DME</b> YPE 117.2 Ch 119 N56 12 25 W117 30 43 (1925') 040° 2.0NM to A/D	
<b>CAUTION</b>	Extensive bird & wildlife activity vic rwys.	

## PEACE RIVER FSS - RCO

**Dawson Creek** 122.2 (RAAS) 1330-0530Z (N55 44 W120 11)  
**Fort McMurray** 118.1 (RAAS) 0615-1345Z± (N56 39 W111 14)

# CANADA FLIGHT SUPPLEMENT / GPH 205

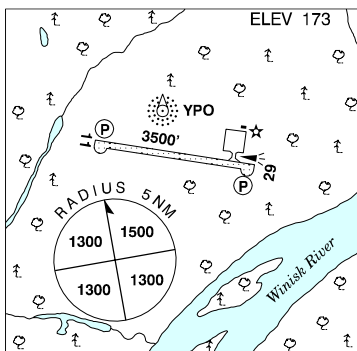
Effective 0901Z 20 November 2008 to 0901Z 15 January 2009

B678 AERODROME/FACILITY DIRECTORY

## PEAWANUCK ON

CYPO

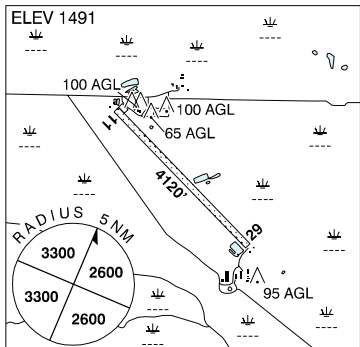
<b>REF</b>	N54 59 17 W85 26 36 Adj SW 10°W UTC-5(4) Elev 173' A5017 E-17 E-18 LO3 HI2 HI4 RCAP
<b>OPR</b>	Govt of Ontario 807-473-2082 Cert
<b>PF</b>	C-1
<b>FLT PLN</b>	NOTAM FILE CYAT
<b>FIC</b>	London 866-WXBRIEF (Toll free within Canada) or 866-541-4104 (Toll free within Canada & USA)
<b>RWY DATA</b>	Rwy 11(108°)/29(288°) 3500x100 gravel
<b>RCR</b>	APM 705-473-2537 13-22Z± Mon-Fri exc hols Rwy cond subject to seasonal & climatic variations.
<b>LIGHTING</b>	11-(TE LO) AP, 29-(TE LO) AP ARCAL-122.8 type K for APAPI, rwy lgts low intensity only
<b>COMM</b>	
<b>RCO</b>	Winnipeg rdo 123.275 (FISE) 126.7 (bcst)
<b>ATF</b>	tfc 122.8 5NM 3200 ASL
<b>NAV</b>	
<b>NDB</b>	YPO 401 (M) N54 59 28 W85 26 34 179° 0.2NM to A/D Unmonitored



## PEGGO DEVON CANADA BC

CPD7

<b>REF</b>	N59 19 08 W120 16 38 0.3SE 23°E UTC-8(7) Elev 1491' A5022 D-12 LO1 LO5
<b>OPR</b>	Devon Canada 250-261-0033 Reg PPR
<b>FLT PLN</b>	NOTAM FILE CYYE
<b>FIC</b>	Edmonton 866-WXBRIEF (Toll free within Canada) or 866-541-4102 (Toll free within Canada & USA)
<b>ACC</b>	Edmonton IFR 888-358-7526 or 780-890-8304/8305
<b>RWY DATA</b>	Rwy 11(113°)/29(293°) 4120x75 gravel Rwy 29 up 0.48%
<b>RCR</b>	Opr Ltd win maint
<b>LIGHTING</b>	11-AS(TE ME), 29-AS(TE ME) ARCAL-122.95 type K
<b>COMM</b>	
<b>ATF</b>	tfc 122.95 5NM 4500 ASL





# CANADA FLIGHT SUPPLEMENT / GPH 205

Effective 0901Z 20 November 2008 to 0901Z 15 January 2009

AERODROME/FACILITY DIRECTORY B679

## PELEE ISLAND ON

CYPT

<b>REF</b>	N41 46 42 W82 40 41 Adj S 7°W UTC-5(4) Elev 572' A5000 F-21 LO6 CAP T2	
<b>OPR</b>	Township of Pelee 519-724-2931/965-6283 Cert	
<b>PF</b>	A-1 C-2,3,4,5	
<b>CUST</b>	AOE/15 888-226-7277 PNR	
<b>FLT PLN</b>	NOTAM FILE CYQG IFR dep to Windsor (CYQG) or Detroit TCA-see PRO	
<b>FIG</b>	London 866-WXBRIEF (Toll free within Canada) or 866-541-4104 (Toll free within Canada & USA)	
<b>WX</b>	Opr 123.2 ltd hrs	
<b>RWY DATA</b>	Rwy 10(096°)/28(276°) 3300x75 asphalt Rwy 18/36 1850x200 gravel Thld 36 displ 300'. Avbl day VFR only. PPR Opr 519-724-2931/2671.	
<b>RCR</b>	Opr 14-22Z± Ltd win maint rwy 10/28. No win maint rwy 18/36.	
<b>LIGHTING</b>	10-AS(TE ME) AP, 28-AS(TE ME) AP ARCAL-123.2 type K, to turn RILS off 3 keys.	
<b>COMM</b>	<b>ATF</b> tfc 123.2 5NM 3600 ASL <b>ARR</b> Cleveland Apch 126.35 360.0 <b>DEP</b> Cleveland Apch 126.35 360.0	
<b>NAV</b>	<b>NDB</b> PT 283 (M) N41 46 46 W82 40 12 at A/D	
<b>PRO</b>	IFR dep for Windsor (CYQG), Detroit city or Detroit airspace call Cleveland Approach Control 216-898-2040 for dep clnc. Pilots are requested to avoid flight below 2000 ASL when flying over the Jack Miner Bird Sanctuary (Kingsville, On N42 04 00 W82 45 00) & over Point Pelee National Park.	

## PELICAN AB

CFT8

<b>REF</b>	N56 09 39 W113 28 25 Adj 18°E UTC-7(6) Elev 2059' A5015 A5023 D-13 E-15 E-16 LO1 RCAP	
<b>OPR</b>	EnCana Oil & Gas Co Ltd 780-891-4105 Reg PPR	
<b>FLT PLN</b>	NOTAM FILE CYMM	
<b>FIG</b>	Edmonton 866-WXBRIEF (Toll free within Canada) or 866-541-4102 (Toll free within Canada & USA)	
<b>ACC</b>	Edmonton IFR 888-358-7526 or 780-890-8304/8305	
<b>RWY DATA</b>	Rwy 07(072°)/25(252°) 3872x75 asphalt Rwy 25 up 0.98%	
<b>RCR</b>	Opr Ltd win maint	
<b>LIGHTING</b>	07-(TE LO), 25-(TE LO)	
<b>COMM</b>	<b>ATF</b> UNICOM (AU) ltd hrs O/T tfc 122.8 5NM 5100 ASL	
<b>NAV</b>	<b>NDB</b> 1N 311 N56 09 35 W113 28 20 at A/D	

# CANADA FLIGHT SUPPLEMENT / GPH 205

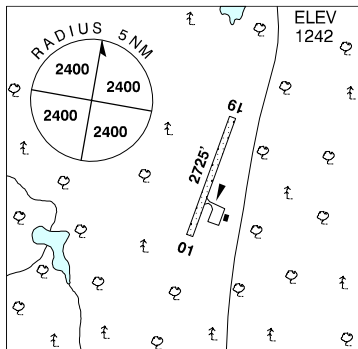
Effective 0901Z 20 November 2008 to 0901Z 15 January 2009

B680 AERODROME/FACILITY DIRECTORY

## PELICAN NARROWS SK

CJW4

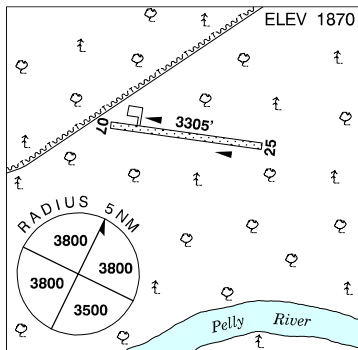
<b>REF</b>	N55 17 13 W102 44 59 10NNE 10°E UTC-6 Elev 1242' A5016 E-16 LO1 CAP
<b>OPR</b>	Ministry of Hwys & Infrastructure 306-953-3263 Reg
<b>FLT PLN</b> <b>FIC</b>	NOTAM FILE CYVC Edmonton 866-WXBRIEF (Toll free within Canada) or 866-541-4102 (Toll free within Canada & USA)
<b>RWY DATA</b> <b>RCR</b>	Rwy 19(190°)/01(010°) 2725x75 gravel Area Office 306-425-4495/4493 or Opr Ltd win maint Rwy strength & cond subject to seasonal and/or climatic variations
<b>COMM</b> <b>ATF</b>	tfc 122.8 5NM 4300 ASL



## PELLY CROSSING YT

CFQ6

<b>REF</b>	N62 50 15 W136 31 40 2NE 26°E UTC-8(7) Elev 1870' A5028 D-12 LO5 RCAP
<b>OPR</b>	Govt of Yukon 867-634-2450 or 867-996-2334 Reg
<b>PF</b>	C-1,2,4,5
<b>FLT PLN</b> <b>FIC</b> <b>ACC</b>	NOTAM FILE CYXY Whitehorse 866-WXBRIEF (Toll free within Canada) or 866-541-4107 (Toll free within Canada & USA) Edmonton IFR 888-358-7526 or 780-890-8304/8305
<b>SERVICES</b> <b>S</b>	4
<b>RWY DATA</b> <b>RCR</b>	Rwy 07(072°)/25(252°) 3305x75 gravel Rwy, twys, apron soft dur spring thaw Opr Ltd maint
<b>COMM</b> <b>ATF</b>	tfc 123.2 5NM 4900 ASL
<b>CAUTION</b>	WI may not indicate actual winds vic A/D. Wind shear may be encountered.



# CANADA FLIGHT SUPPLEMENT / GPH 205

Effective 0901Z 20 November 2008 to 0901Z 15 January 2009

AERODROME/FACILITY DIRECTORY B681

## PEMBERTON BC

CYPS

<b>REF</b>	N50 18 09 W122 44 16 5SE 19°E UTC-8(7) Elev 670' A5004 E-15 LO2	
<b>OPR</b>	Village 604-894-6135 Reg Ldg fees	
<b>PF</b>	B-1 C-2,3,4,5 D-6	
<b>FLT PLN</b>	NOTAM FILE CYVR	
<b>FIC</b>	Kamloops 866-WXBRIEF (Toll free within Canada) or 866-541-4101 (Toll free within Canada & USA)	
<b>SERVICES</b>		
<b>FUEL</b>	100LL, 16-01Z†, Avgas 604-894-5727	
<b>RWY DATA</b>	Rwy 06(065°)/24(245°) 3917x100 asphalt	
<b>RCR</b>	Opr Ltd win maint.	
<b>PAD DATA</b>	4 prkg pads: 2 at 25' dia concrete & 2 at 50' dia asphalt	
<b>COMM</b>		
<b>ATF</b>	tfc 123.2 2NM 3000 ASL	
<b>PRO</b>	Rgt hand circuits rwy 24 (CAR 602.96).	
<b>CAUTION</b>	Mountainous terrain all quads. Soaring in summer. Hang gliding north of airport.	

## PEMBROKE ON

CYTA

<b>REF</b>	N45 51 52 W77 15 06 5.2NW 13°W UTC-5(4) Elev 529' A5000 A5001 F-21 LO6 LO7 HI5 CAP	
<b>OPR</b>	Pembroke & Area Aprt Comsn 613-687-5300/4910 maint or 613-732-3525 Future Communications 11-21Z† Mon-Fri, 13-21Z† Sat, Sun & hol. APM after hrs Cert Ldg fees apply to commercial acft.	
<b>PF</b>	A-1,2 ltd hrs, 6	
<b>FLT PLN</b>	NOTAM FILE CYTA	
<b>FIC</b>	London 866-WXBRIEF (Toll free within Canada) or 866-541-4104 (Toll free within Canada & USA)	
<b>SERVICES</b>	Call-out chg may be levied for one or more svcs.	
<b>FUEL</b>	MG-1, 100LL, JA-1 11-21Z† Mon-Fri, 13-21Z† Sat, Sun & hol	
<b>OIL</b>	80, 100, 100W, 15W50	
<b>S</b>	1,2,3,4,5,6,7	
<b>SUP FL</b>	D-ice	
<b>JASU</b>	CE 14	
<b>RWY DATA</b>	Rwy 17/35 5000x100 asphalt	
<b>TWY</b>	Twy B seasonal use, May 1-Oct 31, no win maint.	
<b>RCR</b>	Opr 11-21Z† Mon-Fri, 13-21Z† Sat, Sun & hol. CRFI/RSC avbl ltd hrs. PLR/PCN	
<b>LIGHTING</b>	17-AS(TE ME)V1, 35-AD AS(TE ME) V1 ARCAL-122.8 type K	
<b>COMM</b>		
<b>ATF</b>	UNICOM (AU) ltd hrs O/T tfc 122.8 5NM 3500 ASL	
<b>PAL</b>	Montréal Ctr 135.2 278.5	
<b>A/G</b>	Petawawa Advsy 126.4 or 250.1 13-2130Z† Mon-Fri, O/T PPR, DND 613-588-5789	

# CANADA FLIGHT SUPPLEMENT / GPH 205

Effective 0901Z 20 November 2008 to 0901Z 15 January 2009

B682 AERODROME/FACILITY DIRECTORY

## PEMBROKE ON (Cont'd)

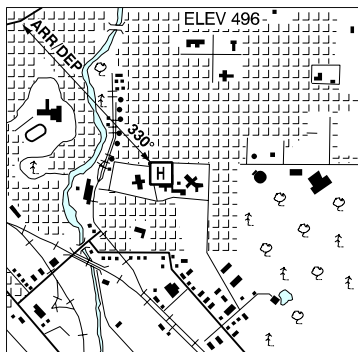
CYTA

<b>NAV</b>	<b>NDB</b> YTA 409 (L) N45 48 10 W77 13 09 352° 3.5NM to A/D
<b>PRO</b>	<b>MIL</b> Crash response for mil a/c provided by CFB Petawawa, 30 min deployment time rqrd. Mil call CSN 677-5555, com 613-588-5555. Airborne diversions thru Petawawa advsy Mon-Fri 13-2130Z± on 126.4 250.1 or thru Québec FIC 126.7 123.15. Emerg crew monitors 122.8R when in posn at CYTA.
<b>CAUTION</b>	Parachuting over aprt 8000 ASL & below, ocsl daylight by NOTAM.

## PEMBROKE (REGIONAL HOSP) ON (Heli)

CNG5

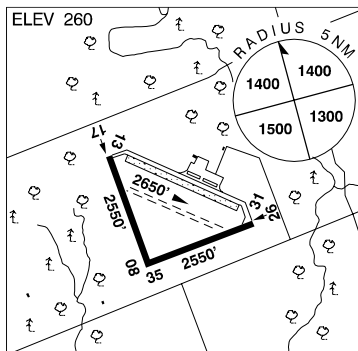
<b>REF</b>	N45 48 55 W77 06 28 Adj 13°W UTC-5(4) Elev 496' A5000 A5001
<b>OPR</b>	Pembroke Regional Hosp 613-732-2811 Cert PPR
<b>FLT PLN</b>	<b>FIC</b> NOTAM FILE CYTA London 866-WXBRIEF (Toll free within Canada) or 866-541-4104 (Toll free within Canada & USA)
<b>PAD DATA</b>	86' x 86' asphalt 114' x 114' Rstd max heli length 57.5' <b>RCR</b> Opr
<b>LIGHTING</b>	DR RY(LO) RF(FL) ARCAL-122.9 type J
<b>PRO</b>	Arr/dep path 330°



## PENDLETON ON

CNF3

<b>REF</b>	N45 29 10 W75 05 46 3NW 15°W UTC-5(4) Elev 260' A5002 F-21
<b>OPR</b>	Gatineau Gliding Club 613-673-5386 Reg Aprt attended Sat-Sun only
<b>PF</b>	B-1 C-2,4,5 D-3,6
<b>FLT PLN</b>	<b>FIC</b> (bil) NOTAM FILE CYND Québec 866-GOMÉTÉO or 866-WXBRIEF (Toll free within Canada) or 866-541-4105 (Toll free within Canada & USA)
<b>RWY DATA</b>	Rwy 13/31 2650x100 turf Rwy 08/26 2550x100 old asphalt, 30' ctr x 2500' new asphalt/gravel Rwy 17/35 2550x100 old asphalt <b>RCR</b> Opr No win maint. All old asphalt sfcx exc 30' strip rwy 08/26 rough. Use turf rwys beside each old asphalt sfc (same length/width).
<b>COMM</b>	<b>ATF</b> UNICOM Sat-Sun O/T tfc 123.3 5NM 3300 ASL excluding the airspace that lies within Ottawa TCA class D airspace.
<b>PRO</b>	Extensive glider activity.

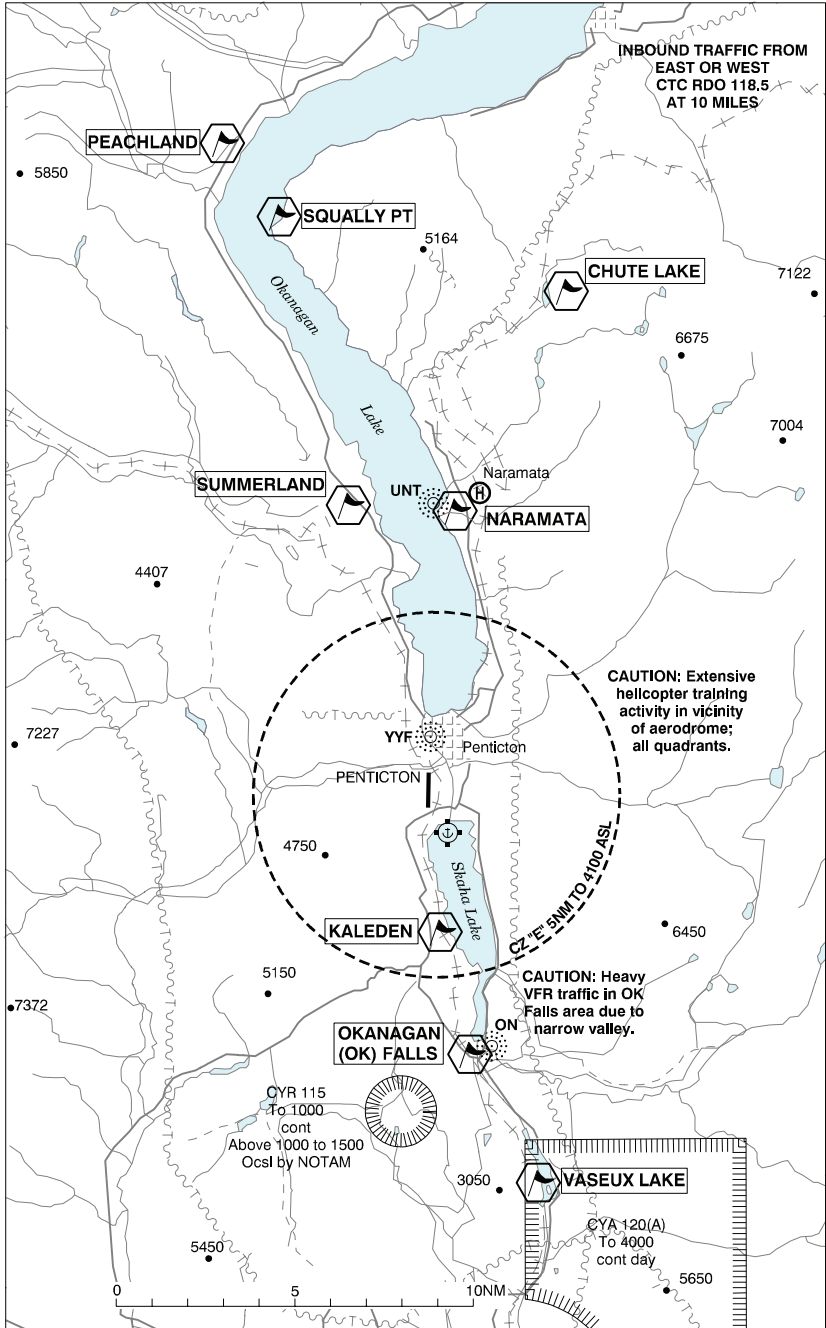


# CANADA FLIGHT SUPPLEMENT / GPH 205

Effective 0901Z 20 November 2008 to 0901Z 15 January 2009

AERODROME/FACILITY DIRECTORY B683

## PENTICTON VFR TERMINAL PROCEDURES CHART

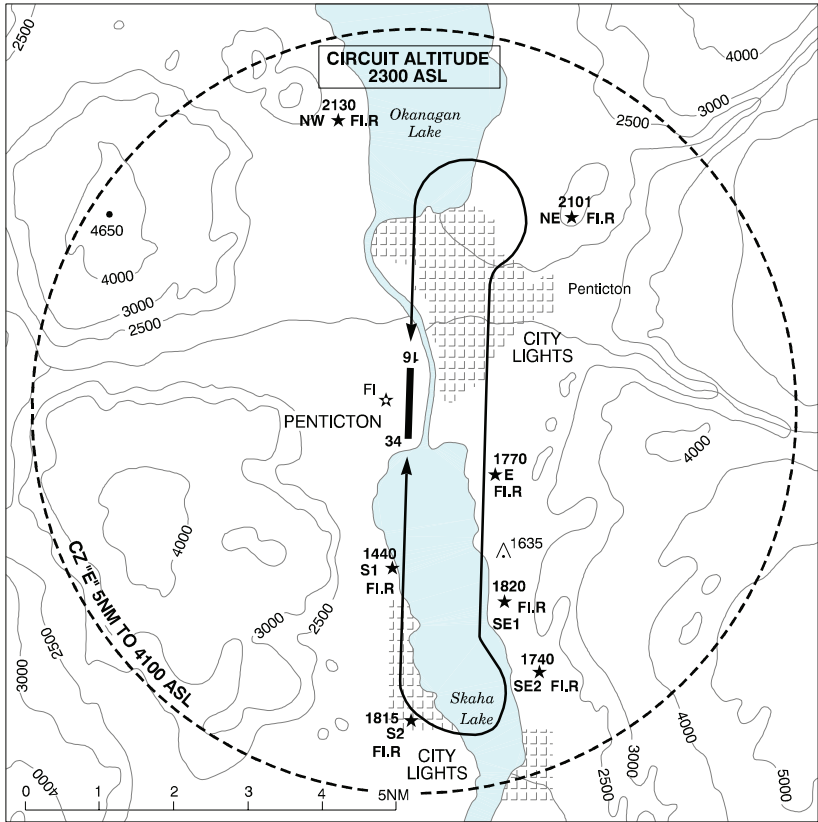


# CANADA FLIGHT SUPPLEMENT / GPH 205

Effective 0901Z 20 November 2008 to 0901Z 15 January 2009

B684 AERODROME/FACILITY DIRECTORY

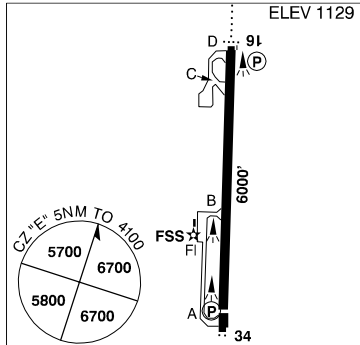
## PENTICTON VFR TERMINAL PROCEDURES CHART - NIGHT CIRCUIT PROCEDURE



### PENTICTON BC

CYYF

<b>REF</b>	N49 27 47 W119 36 08 1.8SW 18°E UTC-8(7) Elev 1129' A5004 A5005 E-15 LO2 HI3 CAP RCAP
<b>OPR</b>	TC 250-492-6042 Cert
<b>PF</b>	A-1,2,3,6 B-5 C-4
<b>CUST</b>	AOE/30 888-226-7277 16-24Z† Mon-Fri exc hols
<b>FLT PLN</b>	NOTAM FILE CYYF
<b>FI</b>	Kamloops 866-WXBRIEF (Toll free within Canada) or 866-541-4101 (Toll free within Canada & USA)
<b>WX</b>	METAR H24. TAF H24, issue times: 01, 07, 13, 19Z.
<b>PIK</b>	ATB, south entrance in foyer area, airside access



# CANADA FLIGHT SUPPLEMENT / GPH 205

Effective 0901Z 20 November 2008 to 0901Z 15 January 2009

AERODROME/FACILITY DIRECTORY B685

## PENTICTON BC (Cont'd)

CYFF

<b>SERVICES</b>	
<b>FUEL</b>	100LL, JA 250-493-5323 (1430-02Z± Mon-Sat, 16-02Z± Sun)
<b>OIL</b>	80, 100
<b>S</b>	1,2
<b>JASU</b>	CE-15 (Shell & Air BC)
<b>RWY DATA</b>	
<b>RCR</b>	Rwy 16(163°)/34(343°) 6000x148 asphalt Thld 34 displ 300'. FSS Ltd win maint 13-02Z± Mon-Fri, 14-0030Z± Sat, Sun & hols O/T call out chg may be levied. CRFI, PLR/PCN
<b>LIGHTING</b>	
	16-AO(TE ME) P2, 34-AS(TE ME) P2 PAPI rwy 34 OCL to 2NM
<b>COMM</b>	
<b>RADIO</b>	118.5 295.4 (E) (emerg only 250-492-3001)
<b>RCO</b>	Pacific rdo 122.5 (FISE) 126.7 (FISE)
<b>MF</b>	rdo 118.5 5NM 4100 ASL (CAR 602.98)
<b>VDF</b>	118.5
<b>NAV</b>	
<b>VOT</b>	114.8
<b>NDB</b>	YF 290 (M) N49 29 16 W119 36 05 163° 1.0NM to A/D NARAMATA UNT 312 (M) N49 35 50 W119 36 10 162° 7.6NM to A/D OKANAGAN ON 356 (L) N49 20 33 W119 34 08 332° 7.4NM to A/D
<b>DME</b>	XYF 110.3 Ch 40 N49 27 09 W119 36 13 (1114') at A/D
<b>LOC</b>	XYF 110.3
<b>PRO</b>	
	Inbd tfc see VTPC; for night circuit pro see Night Circuit VTPC. Circuit hgt 2300 ASL. Rgt hand circuits rwy 34 (CAR 602.96). Heli tng all quadrants, circuits E & W of A/D at 2300 ASL.
<b>CAUTION</b>	
	Only pilots familiar with local terrain should use this aprt dur hrs of darkness. Ngt ops not recommended unless all 7 hazard beacons oprg. Extv heli activity at A/D dur daylight hrs all quads.

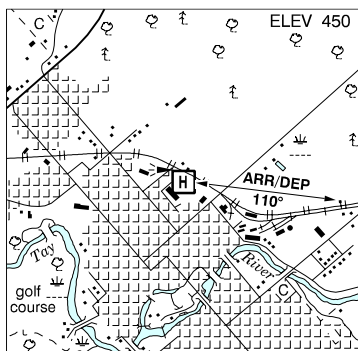
## PENTICTON FSS – RCO

Kelowna 119.6 (RAAS) 0630-14Z± (N49 56 W119 22)

## PERTH (GREAT WAR MEM HOSP) ON (Heli)

CNC9

<b>REF</b>	N44 54 18 W76 14 59 Adj NE 13°W UTC-5(4) Elev 450' A5000
<b>OPR</b>	Great War Mem Hosp 613-267-1500 Cert PPR
<b>FLT PLN</b>	NOTAM FILE CYND
<b>FIC</b>	Québec 866-GOMÉTÉO or 866-WXBRIEF (Toll free within Canada) or 866-541-4105 (Toll free within Canada & USA)
<b>PAD DATA</b>	86' dia asphalt 114' dia Rstd max heli length 57.5'
<b>RCR</b>	Opr
<b>LIGHTING</b>	DR RY(LO) RF(FL)
<b>PRO</b>	Arr/dep 110° fr heli.



# CANADA FLIGHT SUPPLEMENT / GPH 205

Effective 0901Z 20 November 2008 to 0901Z 15 January 2009

B686 AERODROME/FACILITY DIRECTORY

## PETAWAWA ON

CYWA

<b>REF</b>	N45 57 08 W77 19 09 3.5NW 13°W UTC-5(4) Elev 427' A5000 A5001 F-21 LO6 LO7	
<b>OPR</b>	DND 613-687-5511 Ext 7880 CSN 319-677-7880 Mil PPR 48 hrs min thru 427 Sqn Ops.	
<b>PF</b>	B-1 C-2,3,5	
<b>FLT PLN</b>	NOTAM FILE CYWA	
<b>FIC</b>	London 866-WXBRIEF (Toll free within Canada) or 866-541-4104 (Toll free within Canada & USA)	
<b>MIL</b>	613-687-5511 Ext 7789	
<b>WX</b>	WD2 613-687-5511 Ext 7987 CSN 319-677-7987 (see COMM) METAR 11-21Z Mon-Fri AWOS. TAF 11-21Z Mon-Fri, issue times: 12, 17Z±. NOTE: hrs will vary according with mil requirements.	
<b>SERVICES</b>		
<b>FUEL</b>	F-34	
<b>OIL</b>	156	
<b>ARFF</b>	4	
<b>MIL ADV</b>	427 Sqn Duty Ops 40.90 FM 613-687-5511 Ext 7880 CSN 319-677-7880.	
<b>RWY DATA</b>	Rwy 17/35 3800x75 turf Sum ops only, mid May-mid Nov.	
<b>RCR</b>	Opr	
<b>LIGHTING</b>	Pad apch lgts (7 bars of 3 lgts).	
<b>COMM</b>		
<b>MF</b>	Petawawa advsy 126.4 250.1 advsy opr ltd hrs. Ctc Sqn Ops 613-687-5511 Ext 7880. O/T min 48 hrs notice for PPR 5NM 3400 ASL (CAR 602.98)	
<b>MIL</b>	45.8 FM 126.4 126.2x 250.1 236.6x (E) Range ctl 49.9 FM or 126.4 when advsy clsd.	
<b>VDF</b>	126.4 (V)	
<b>PMSV</b>	297.4 ltd svc 11-21Z	
<b>NAV</b>		
<b>NDB</b>	YWA 516 (M) N45 53 41 W77 16 18 344° 3.6NM to A/D Unmonitored when ADV clsd.	
<b>PRO</b>	Rgt hand circuits rwy 35 (CAR 602.96). To maintain required separation fr CYR 511, acft dep or arr CYWA IFR must rte via YTA NDB, ie dep rte CYWA DCT YWA DCT YTA BPOC, or CYWA DCT YTA; arr rte YTA DCT YWA. A/D located within CYR 511, ctc Petawawa Flt Advsy to ensure range safe. Overflight of ammunition compound 3.5NM WNW of heli proh. Active Range info thru Range Control 49.90 FM or 126.4. When Flt Advsy clsd ctc 613-687-5511 Ext 5203.	
<b>CAUTION</b>	Parajump area 6NM S, 2NM radius of N45 52 W77 18 (over Pembroke A/D) 8000 ASL, ocsd daylight by NOTAM.	



# CANADA FLIGHT SUPPLEMENT / GPH 205

Effective 0901Z 20 November 2008 to 0901Z 15 January 2009

AERODROME/FACILITY DIRECTORY B687

## PETERBOROUGH ON

CYPQ

<b>REF</b>	N44 13 48 W78 21 48 3SSW 12°W UTC-5(4) Elev 628' A5000 F-21 LO6 HI5 CAP	
<b>OPR</b>	City 705-743-6708 Cert	
<b>PF</b>	B-1,2 C-3,4,5,6	
<b>CUST</b>	AOE/15 888-226-7277 PNR	
<b>FLT PLN</b>	NOTAM FILE CYPQ	
<b>FI</b>	London 866-WXBRIEF (Toll free within Canada) or 866-541-4104 (Toll free within Canada & USA)	
<b>WX</b>	METAR H24 Legacy AWOS (See COMM).	
<b>PIK</b>	TAF 11-03Z±, issue times: 11,14, 20Z (DT 10, 14, 20Z) Esso building	
<b>SERVICES</b>	13-0130Z± Apr-Sep, 13-23Z± Oct-Mar. Stay late or call out on request. After hrs callout chg may apply. Call 705-745-8626	
<b>FUEL</b>	100LL, JA-1	
<b>OIL</b>	All	
<b>S</b>	1,2,3,4,5	
<b>RWY DATA</b>	Rwy 09(089°)/27(269°) 5000x100 asphalt Rwy 13/31 1850x100 turf Thld 31 displ 550'	
<b>RCR</b>	Opr CRFI/RSC ltd hrs (win 12-23Z). No win maint rwy 13/31. Ltd night win maint rwy 09/27. After hrs 2 hrs PNR. PLR/PCN	
<b>LIGHTING</b>	09-AS(TE HI) P1, 27-AS(TE HI) P1 ARCAL-123.0 type K AS on request, unicom 123.0	
<b>COMM</b>	UNICOM 13-23Z± O/T ftc 123.0 5NM 3600 ASL Toronto Ctr 134.25	
<b>ATF</b>	126.925 (YPQ)	
<b>PAL</b>		
<b>Legacy</b>		
<b>AWOS</b>		
<b>NAV</b>		
<b>NDB</b>	YPQ 379 (L) N44 12 47 W78 27 29 088° 3.8NM to A/D	
<b>PRO</b>	Acft are prohibited fr oprg within 302' either side of rwy 09/27. Trng activity btwn Toronto/Buttonsville Municipal & Oshawa aprts. See Planning, Ontario, Hazards to acft ops, Claremont trng area.	
<b>CAUTION</b>	Wildlife frequently on rwys.	

# CANADA FLIGHT SUPPLEMENT / GPH 205

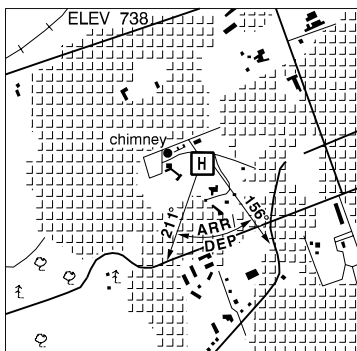
Effective 0901Z 20 November 2008 to 0901Z 15 January 2009

B688 AERODROME/FACILITY DIRECTORY

## PETERBOROUGH (CIVIC HOSP) ON (Helicopter)

CNU3

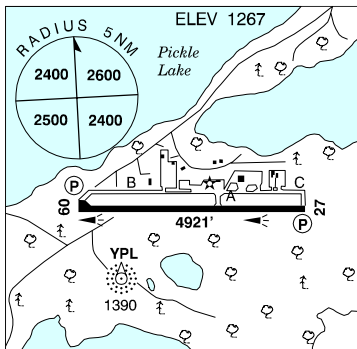
<b>REF</b>	N44 18 02 W78 20 45 Adj W 12°W UTC-5(4) Elev 738' A5000
<b>OPR</b>	Peterborough Civic Hosp 705-743-2121 Cert PPR
<b>FLT PLN</b>	NOTAM FILE CYPQ
<b>FIC</b>	London 866-WXBRIEF (Toll free within Canada) or 866-541-4104 (Toll free within Canada & USA)
<b>PAD DATA</b>	90' x 90' concrete 120' x 120' asphalt Max heli length 60'
<b>RCR</b>	Opr
<b>LIGHTING</b>	RY(LO) Green RF(FL)
<b>PRO</b>	Arr/dep btwn 156°-211° fr heli.



## PICKLE LAKE ON

CYPL

<b>REF</b>	N51 26 47 W90 12 51 0.7SW 3°W UTC-5 Elev 1267' A5008 E-17 LO4 HI4 CAP
<b>OPR</b>	Govt of Ontario 807-473-2082 Cert
<b>PF</b>	A-1 C-2,3,4,5
<b>FLT PLN</b>	NOTAM FILE CYPL
<b>FIC</b>	Winnipeg 866-WXBRIEF (Toll free within Canada) or 866-541-4103 (Toll free within Canada & USA)
<b>WX</b>	METAR 11-02Z dly. TAF 13-01Z, issue times: 13, 20Z.
<b>SERVICES</b>	Call out chg may be levied for one or more svcs
<b>FUEL</b>	100LL, JA-1 with FSII, HPR, SP
<b>OIL</b>	All
<b>S</b>	1,2,4,5,6
<b>SUP FL</b>	D-Ice
<b>PVT ADV</b>	Rice Avn 807-928-2726 13-22Z Mon-Sat clsd Sun call out for MNR only, May 1-Sep 15. 13-22Z Mon-Fri clsd Sat & Sun NO CALL OUTS, Sep 16-Apr 30. Shell Avn 129.65 807-928-2346 10-22Z call out chg. Wasaya Air 128.95
<b>RWY DATA</b>	Rwy 09(093°)/27(273°) 4921x100 asphalt Rwy 27 up 0.81%
<b>RCR</b>	APM 807-928-2342 14-23Z Mon-Fri exc hols.
<b>LIGHTING</b>	09-(TE ME) P1, 27-(TE ME) P1 ARCAL-122.2 type K
<b>COMM</b>	
<b>RCO</b>	Thunder Bay rdo 122.2 (RAAS) 11-02Z Winnipeg rdo 123.475 (FISE)
<b>MF</b>	Thunder Bay rdo 11-02Z O/T ftc 122.2 5NM 4300 ASL (CAR 602.98)



# CANADA FLIGHT SUPPLEMENT / GPH 205

Effective 0901Z 20 November 2008 to 0901Z 15 January 2009

AERODROME/FACILITY DIRECTORY B689

## PICKLE LAKE ON (Cont'd)

CYPL

<b>NAV</b>	<p><b>VOT</b> 111.8  <b>NDB</b> YPL 382 (M) N51 26 31 W90 13 20 at A/D  <b>DME</b> PL 113.7 Ch 84 N51 26 37 W90 13 22 (1261') at A/D</p>
<b>CAUTION</b>	<p>Dly radiosonde balloon launches with an ascent rate of 1000 ft/min btwn the hrs of 1115-1345Z &amp; 2315-0145Z.            Blasting ops within area bounded by N51 32 03 W90 06 07, N51 32 03 W90 00 15, N51 29 13 W90 00 15, N51 29 13 W90 06 07, to point of origin. Centred aprx at Pickle Crow 6.5NM NE of aprt. Debris to 1000 AGL (2220 ASL) daylight hrs.</p>

## PICTON ON

CNT7

<b>REF</b>	N43 59 21 W77 08 21 Adj SE 12°W UTC-5(4) Elev 465' A5000 F-21	
<b>OPR</b>	Loch Sloy Holdings Ltd. 613-399-9076 or 613-393-3152 or 613-476-3064 Reg PPR	
<b>PF</b>	C-1,2,3,4,5,6	
<b>FLT PLN</b>	NOTAM FILE CYGK London 866-WXBRIEF (Toll free within Canada) or 866-541-4104 (Toll free within Canada & USA)	
<b>RWY DATA</b>	Rwy 05/23 2580x150 asphalt Rwy 10/28 2550x150 asphalt Rwy 17/35 2520x150 asphalt	
<b>RCR</b>	Opr No win maint	
<b>COMM</b>	<b>ATF</b> tfc 123.2 5NM 3500 ASL	
<b>CAUTION</b>	Extv glider activity 4NM radius to 3500 ASL mid Jun-Aug 31, dly.	

## PIERRE ELLIOTT TRUDEAU INTL QC — See MONTRÉAL / PIERRE ELLIOTT TRUDEAU INTL

## PIKANGIKUM ON

CYPM

<b>REF</b>	N51 49 11 W93 58 24 1NE 1°E UTC-6(5) Elev 1117' A5007 E-17 LO4 CAP	
<b>OPR</b>	Govt of Ontario 807-473-2082 Cert	
<b>PF</b>	C-1,4	
<b>FLT PLN</b>	NOTAM FILE CYRL Winnipeg 866-WXBRIEF (Toll free within Canada) or 866-541-4103 (Toll free within Canada & USA)	
<b>RWY DATA</b>	Rwy 09(091°)/27(271°) 3508x100 gravel	
<b>RCR</b>	APM 807-773-5522 14-23Z± Mon-Fri exc hols. Subject to seasonal & climatic variations.	
<b>LIGHTING</b>	09-(TE LO) AP, 27-(TE LO) AP ARCAL-122.8 type K for APAPI, rwy lgts low int only.	

# CANADA FLIGHT SUPPLEMENT / GPH 205

Effective 0901Z 20 November 2008 to 0901Z 15 January 2009

B690 AERODROME/FACILITY DIRECTORY

## PIKANGIKUM ON (Cont'd)

CPYM

<b>COMM</b>	<b>ATF</b> UNICOM ltd hrs O/T tfc 122.8 5NM 4200 ASL
<b>NAV</b>	<b>NDB</b> YPM 274 (L) N51 49 23 W93 58 24 at A/D Unmonitored

## PIKWITONEI MB

CZMN

<b>REF</b>	N55 35 22 W97 09 49 Adj NW 4°E UTC-6(5) Elev 636' A5016 E-16 E-17	
<b>OPR</b>	Govt of Manitoba 204-677-6722 Cert	
<b>PF</b>	A-1 C-2.4 Tml bldg opr 13-18Z†, 19-2115Z† Mon-Fri, clsd Sat, Sun & hols	
<b>FLT PLN</b>	<b>FIG</b> NOTAM FILE CYTH Winnipeg 866-WXBRIEF (Toll free within Canada) or 866-541-4103 (Toll free within Canada & USA)	
<b>RWY DATA</b>	Rwy 05(048°)/23(228°) 2192x75 crushed rock	
<b>RCR</b>	APM 204-458-2450 13-18Z†, 19-2115Z† Mon-Fri exc hols O/T 204-458-2456	
<b>LIGHTING</b>	05-(TE LO), 23-(TE LO) ARCAL-122.8 type J (see CAUTION)	
<b>COMM</b>	<b>ATF</b> UNICOM ltd hrs O/T tfc 122.8 5NM 3700 ASL	
<b>CAUTION</b>	Rwy edge lgt installed higher than std (aprx 27 inches high loc 5' outside rwy edge).	

## PILOT BUTTE SK

CPB5

<b>REF</b>	N50 27 40 W104 25 50 1SW 11°E UTC-6 Elev 2000' A5006 E-16	
<b>OPR</b>	T. Truman 306-781-2303 Reg	
<b>PF</b>	C-1,2,5 D-3,4,6	
<b>FLT PLN</b>	<b>FIG</b> NOTAM FILE CYQR Edmonton 866-WXBRIEF (Toll free within Canada) or 866-541-4102 (Toll free within Canada & USA)	
<b>RWY DATA</b>	Rwy 12(117°)/30(297°) 1680x65 turf Ltd sum maint No win maint	
<b>COMM</b>	<b>ATF</b> tfc 123.2 5NM 5000 ASL	
<b>CAUTION</b>	Numerous obst/twr vic. Class E airspace abv 3000 ASL, see Regina VTPC.	

# CANADA FLIGHT SUPPLEMENT / GPH 205

Effective 0901Z 20 November 2008 to 0901Z 15 January 2009

AERODROME/FACILITY DIRECTORY B691

## PINCHER CREEK AB

CZPC

<b>REF</b>	N49 31 14 W113 59 50 3NW 16°E UTC-7(6) Elev 3903' A5005 E-15 E-16 LO2 HI3 CAP	
<b>OPR</b>	Muni District of Pincher Creek 403-627-3130 Reg	
<b>PF</b>	A-1 C-2,3,4,5,6	
<b>FLT PLN</b>	NOTAM FILE CZPC	
<b>FIC</b>	Edmonton 866-WXBRIEF (Toll free within Canada) or 866-541-4102 (Toll free within Canada & USA)	
<b>ACC</b>	Edmonton IFR 888-358-7526 or 780-890-8304/8305	
<b>WX</b>	Legacy AWOS	
<b>SERVICES</b>	Call out chg may be levied after hrs	
<b>FUEL</b>	100LL, JA Pincher Creek Aviation Svc 403-627-4173	
<b>OIL</b>	15W-50	
<b>RWY DATA</b>	Rwy 07(074°)/25(254°) 6600x100 asphalt Thld 07 displ 400'. Thld 25 displ 1200'. Rwy 25 up 0.53%.	
<b>RCR</b>	Opr 1500-2330Z† Mon-Fri, exc hols Ltd win maint	
<b>LIGHTING</b>	07-(TE ME) V1, 25-(TE ME) V1 ARCAL-123.2 type K	
<b>COMM</b>		
<b>ATF</b>	tfc 123.2 5NM 7000 ASL	
<b>NAV</b>		
<b>NDB</b>	9Y 311 (L) N49 31 24 W113 59 55 at A/D Pvt	
<b>CAUTION</b>	Acft on rwy not visible from all areas. Water bomber activity at or in vic of A/D Apr thru Sep.	

## PINCHER CREEK (HOSP) AB (Heli)

CPR8

<b>REF</b>	N49 29 33 W113 56 50 Adj 16°E UTC-7(6) Elev 3754' A5005 RCAP	
<b>OPR</b>	Chinook Health Region 403-627-1234 Cert PPR	
<b>FLT PLN</b>	NOTAM FILE CYQL	
<b>FIC</b>	Edmonton 866-WXBRIEF (Toll free within Canada) or 866-541-4102 (Toll free within Canada & USA)	
<b>ACC</b>	Edmonton IFR 888-358-7526 or 780-890-8304/8305	
<b>SERVICES</b>		
<b>FUEL</b>	JA-1(D)	
<b>PAD DATA</b>	40' dia concrete	
<b>RCR</b>	Opr	
<b>LIGHTING</b>	RY(LO) PNR Lgt'd windssock on hosp roof	
<b>COMM</b>		
<b>ATF</b>	tfc 123.2 5NM centred on Pincher Creek aprt 3NM NW 7000 ASL.	
<b>PRO</b>	Arr/dep 089° or 253° fr heli; slope 16%; to be used by multi-engine acft only.	
<b>CAUTION</b>	Bldg north side helipad.	

## CANADA FLIGHT SUPPLEMENT / GPH 205

Effective 0901Z 20 November 2008 to 0901Z 15 January 2009

B692 AERODROME/FACILITY DIRECTORY

### PINE DOCK / JACK PINE RESORT LTD MB

CKQ9

<b>REF</b>	N51 37 12 W96 48 39 1S 4°E UTC-6(5) Elev 750' aprx A5007 E-16 E-17	
<b>OPR</b>	Jack Pine Resort Ltd 204-276-2410 Cert	
<b>PF</b>	B-1 C-2,5	
<b>FLT PLN</b>	NOTAM FILE CYDN	
<b>FIC</b>	Winnipeg 866-WXBRIEF (Toll free within Canada) or 866-541-4103 (Toll free within Canada & USA)	
<b>SERVICES</b>		
<b>FUEL</b>	100LL, JB	
<b>OIL</b>	20/50, 25/60, M20/50, Turbo Oil 2380	
<b>S</b>	4,6	
<b>PVT ADV</b>	Jack Pine Resort Ltd 129.8	
<b>RWY DATA</b>	Rwy 04(037°)/22(217°) 3950x100 oiled gravel	
<b>RCR</b>	Opr Ltd win maint	
<b>COMM</b>		
<b>ATF</b>	tfc 122.8 5NM 3800 ASL	

### PINEHOUSE LAKE SK

CZPO

<b>REF</b>	N55 31 41 W106 34 56 Adj NW 13°E UTC-6 Elev 1278' A5015 E-16 LO1 CAP	
<b>OPR</b>	Ministry of Hwys & Infrastructure 306-953-3263 Reg	
<b>FLT PLN</b>	NOTAM FILE CYVC	
<b>FIC</b>	Edmonton 866-WXBRIEF (Toll free within Canada) or 866-541-4102 (Toll free within Canada & USA)	
<b>SERVICES</b>		
<b>S</b>	6	
<b>RWY DATA</b>	Rwy 16(158°)/34(338°) 3000x65 gravel	
<b>RCR</b>	Area Office 306-425-4495/4493 or Opr Ltd win maint. Rwy strength & cond subject to seasonal and/or climatic variations.	
<b>LIGHTING</b>	16-(TE LO), 34-(TE LO) ARCAL-122.8 key mic 3 times within 5 sec for 15 min duration.	
<b>COMM</b>		
<b>ATF</b>	tfc 122.8 5NM 4300 ASL	

**PINE LAKE YT** — See DAUGHNEY

**PINEY PINECREEK BORDER MB** — See PINEY / PINEY PINECREEK BORDER

# CANADA FLIGHT SUPPLEMENT / GPH 205

Effective 0901Z 20 November 2008 to 0901Z 15 January 2009

AERODROME/FACILITY DIRECTORY B693

## PINEY / PINEY PINECREEK BORDER MB

48Y

<b>REF</b>	N49 00 00 W95 58 57 2NW 4°E UTC-6(5) Elev 1078' A5007 E-17 LO4	
<b>OPR</b>	Piney/Pineycreek Border Aprt Comsn 218-463-2030/1952 Reg	
<b>PF</b>	B-1 D-2,5	
<b>CUST</b>	AOE/15 888-226-7277 14-04Z± U.S. cust 15-04Z±.	
<b>FLT PLN</b>	NOTAM FILE PNM <b>FIC</b> Winnipeg 866-WXBRIEF (Toll free within Canada) or 866-541-4103 (Toll free within Canada & USA) or <b>FSS</b> Princeton MN 800-WX-BRIEF	
<b>SERVICES</b>		
<b>FUEL</b> <b>S</b>	100LL (Card system - Mastercard & Visa) 4,5,6	
<b>RWY DATA</b> <b>RCR</b>	Rwy 15(148°)/33(328°) 3300x75 asphalt Opr Ltd win maint	
<b>LIGHTING</b>	15-(TE ME), 33-(TE ME) Rwy lgts on SS to SR, ints adjusted by ARCAL-122.8 type K.	
<b>COMM</b>		
<b>ATF</b>	UNICOM ltd hrs O/T tfc 122.8 5NM 4100 ASL Unicom at cust. Call U.S. or Cdn cust.	
<b>NAV</b>		
<b>NDB</b>	PFT 342 (L) N48 59 33 W95 58 45 at A/D	

## PITT MEADOWS BC

CYPK

<b>REF</b>	N49 12 58 W122 42 36 1SW 19°E UTC-8(7) Elev 111' VTA A5004 E-15 LO2 T1 CAP	
<b>OPR</b>	Pitt Meadows Aprt Society 604-465-8977 Cert	
<b>PF</b>	B-1,2 C-3,4,5,6	
<b>FLT PLN</b>	NOTAM FILE CYVR <b>FIC</b> Kamloops 866-WXBRIEF (Toll free within Canada) or 866-541-4101 (Toll free within Canada & USA) <b>ACC</b> Vancouver IFR 604-586-4590/4591; IFR tng fits PPR ctc 604-586-4592 <b>PIK</b> Main Terminal, West side of building main floor #100, 24 hr airside access	
<b>SERVICES</b>		
<b>FUEL</b> <b>S</b>	100LL Command Aviation 604-465-5444 09-1730Z± O/T 604-465-7190 north side 100LL Aero Club of BC (Card Lock) south side JA by truck Flanagan Enterprises 604-465-7311 call out chg may be levied after hrs All <b>OIL</b> <b>S</b> 1,3	
<b>RWY DATA</b>	Rwy 08R(078°)/26L(258°) 4700x100 asphalt Thlds 08R & 26L displ 200'. Rwy 08L(078°)/26R(258°) 2500x75 asphalt Rwy 18(183°)/36(003°) 2500x75 asphalt <b>RCR</b> Twr 604-465-9723 PLR/PCN Rwy 08L/26R no win maint	

# CANADA FLIGHT SUPPLEMENT / GPH 205

Effective 0901Z 20 November 2008 to 0901Z 15 January 2009

B694 AERODROME/FACILITY DIRECTORY

## PITT MEADOWS BC (Cont'd)

CYPK

<b>LIGHTING</b>	08R-AD AS(TE ME), 26L-AD(T ME), 18-(TE ME), 36-(TE ME), 16-08Z† O/T ARCAL-126.3 key mic 3 times within 5 sec for 26L, & 5 times within 5 sec for 08R & 7 times within 5 sec for 18-36 for 15 min duration lgt.
<b>COMM</b>	<p><b>ATIS</b> 125.0 15-07Z‡ 604-465-0351</p> <p><b>GND</b> 123.8 15-07Z‡</p> <p><b>TWR</b> Pitt 126.3 (V) 15-07Z‡ (emerg only 604-465-9723)</p> <p><b>MF</b> tfc 126.3 07-15Z‡ 3NM 1900 ASL (CAR 602.98)</p>
<b>NAV</b>	<p><b>VOR</b> YPK 112.4 N49 12 57 W122 42 54 (44') at A/D</p>
<b>PRO</b>	<p>Rgt hand circuits rwys 08R, 18 &amp; 26R (CAR 602.96) circuit hgt 1000 ASL. Seaplane circuits 500 ASL on S side of Fraser River. Twy C fr apron to twy B uncontrolled. Procedures for crossing the southern Strait of Georgia within Tml Class C airspace refer to Vancouver Intl, VTPC for Crossing the Southern Strait of Georgia.</p> <p><b>ATS REQUIREMENTS:</b></p> <p>All VFR acft arriving, departing or transiting the Vancouver or Victoria Tower Class C or D airspace require a transponder code.</p> <ul style="list-style-type: none"> <li>- All acft departing Vancouver or Victoria Intl (including Water Aerodrome) call Vancouver ACC at 888-987-2633 (888-YVR-CODE) or 604-586-4595 for code assignment at least 30 min prior to flight or file a VFR Flight Plan/Flight Itinerary.</li> <li>- All acft arriving Vancouver Intl (including Water Aerodrome) or transiting Vancouver or Victoria Control Zones obtain a code from one of the following ATS units: Vancouver Harbour, Nanaimo, Victoria Harbour, Boundary Bay, Langley, Abbotsford or Pitt Meadows, or call Vancouver ACC at 888-987-2633 (888-YVR-CODE) or 604-586-4595.</li> <li>- All acft arriving Victoria Intl from a non NAV CANADA site call Vancouver ACC at 888-987-2633 (888-YVR-CODE) or 604-586-4595 for code assignment at least 30 minutes prior to flight or file a VFR Flight Plan/ Flight Itinerary.</li> </ul>
<b>CAUTION</b>	Parachuting to 12,500 ASL on A/D. Coyotes in vic of rwys. 160' lit crane 2NM NW of A/D.

## PLEVNA / TOMVALE ON

CNA9

<b>REF</b>	N44 54 58 W76 56 09 3S 13°W UTC-5(4) Elev 890' A5000 F-21	
<b>OPR</b>	Tomvale Air Svcs Ltd 613-479-2625 Reg PPR Ldg fees	
<b>PF</b>	A-1,2,3,5 D-4,6	
<b>FLT PLN</b>	NOTAM FILE CYGK London 866-WXBRIEF (Toll free within Canada) or 866-541-4104 (Toll free within Canada & USA)	
<b>SERVICES</b>		
<b>FUEL</b>	100LL, 80	
<b>OIL</b>	15W50, 20W50	
<b>S</b>	1,2,4,5,6	
<b>PVT ADV</b>	Tomvale Air Svcs 123.3	
<b>RWY DATA</b>	Rwy 05(047°)/23(227°) 2400x75 asphalt/turf, centre 37x2000 asphalt Thld 23 displ 400'. Rwy 18/36 1200x75 turf	
<b>RCR</b>	Opr Ltd win maint	
<b>LIGHTING</b>	05-(TE LO), 23-(TE LO) Ngt thld displ 400' fr end of rwy 23. ARCAL-122.8 type J, ARCAL inop when A/D attended.	
<b>COMM</b>		
<b>ATF</b>	UNICOM ltd hrs O/T tfc 122.8 5NM 3900 ASL	



# CANADA FLIGHT SUPPLEMENT / GPH 205

Effective 0901Z 20 November 2008 to 0901Z 15 January 2009

AERODROME/FACILITY DIRECTORY B695

## PLEVNA / TOMVALE ON (Cont'd)

CNA9

<b>PRO</b>	Rgt hand circuits rwy 23 (CAR 602.96).
<b>CAUTION</b>	Float plane base 0.5S. P-lines 40 AGL loc aprx 800' fr thld rwy 23.

## POINTS NORTH LANDING SK

CYNL

<b>REF</b>	N58 16 36 W104 04 57 Adj E 11°E UTC-6 Elev 1605' A5024 D-13 RCAP	
<b>OPR</b>	Points North Freight Forwarding Inc 306-633-2137 Cert Ldg fees	
<b>PF</b>	B-1,2,5 PNR Opr	
<b>FLT PLN</b>	NOTAM FILE CZWL	
<b>FIC</b>	Edmonton 866-WXBRIEF (Toll free within Canada) or 866-541-4102 (Toll free within Canada & USA)	
<b>SERVICES</b>		
<b>FUEL</b>	100LL, JA-1, FSII	
<b>OIL</b>	All	
<b>S</b>	1,2,4,6	
<b>RWY DATA</b>	Rwy 15(154°)/33(334°) 5810x110 gravel	
<b>RCR</b>	Opr	
<b>COMM</b>		
<b>ATF</b>	UNICOM (AU) call sign 68 ltd hrs O/T tfc 123.3 5NM 4700 ASL	
<b>CAUTION</b>	VHF rdo twr 85 AGL on apron. Ltd twr 1991 ASL (370 AGL) 3NM SW.	

## POKEMOUCHE NB

CDA4

<b>REF</b>	N47 42 59 W64 52 57 6S 20°W UTC-4(3) Elev 68' A5003 A5010 F-22 LO8 CAP	
<b>OPR</b>	Aéroport de la Péninsule (1985) Inc 506-727-4215 Reg Ldg fees	
<b>PF</b>	B-1 C-2,3,4,5	
<b>FLT PLN</b>	NOTAM FILE CYCL	
<b>FIC</b>	(bil) Québec 866-GOMÉTÉO or 866-WXBRIEF (Toll free within Canada) or 866-541-4105 (Toll free within Canada & USA)	
<b>ACC</b>	Moncton 506-867-7176 or 866-480-8200 Fit Plns by Fax 506-867-7180 & include phone numbers where pilot can be reached prior to dep	
<b>SERVICES</b>		
<b>FUEL</b>	100LL Ltd hrs 506-727-4215	
<b>OIL</b>	80, 15W50	
<b>S</b>	4,5,6	
<b>RWY DATA</b>	Rwy 13/31 3000x75 asphalt	
<b>RCR</b>	Opr Ltd win maint	
<b>LIGHTING</b>	13-(TE ME), 31-AS(TE ME) AP ARCAL-123.0 key mic 3 times within 5 sec for 15 min dur. Key mic 5 times to turn off RIL.	

# CANADA FLIGHT SUPPLEMENT / GPH 205

Effective 0901Z 20 November 2008 to 0901Z 15 January 2009

B696 AERODROME/FACILITY DIRECTORY

## POKEMOUCHE NB (Cont'd)

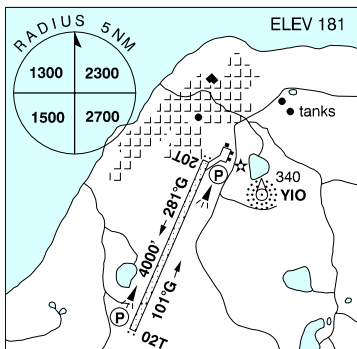
CDA4

<b>COMM</b>	
<b>DRCO</b>	(bil) Québec rdo (Bathurst) 123.45 (FISE) (may not be receivable on the ground)
<b>ATF</b>	UNICOM ltd hrs O/T tfc 123.0 5NM 3100 ASL
<b>NAV</b>	
<b>NDB</b>	2T 329 (L) N47 42 54 W64 53 09 at A/D Pvt Unmonitored

## POND INLET NU

CYIO

<b>REF</b>	N72 41 22 W77 58 08 51°W GV27°E UTC-5(4) Elev 181' A5047 B-8 LO9 HI1 HI2 CAP
<b>OPR</b>	Govt of Nunavut, Iqaluit 867-897-3606 Cert
<b>PF</b>	C-1,2,4,5
<b>FLT PLN</b>	NOTAM FILE CYIO
<b>FIC</b>	North Bay 866-WXBRIEF (Toll free within Canada) or 866-541-4109 (Toll free within Canada & USA)
<b>ACC</b>	Edmonton IFR 888-358-7526 or 780-890-8304/8305
<b>CARS</b>	867-899-8976 ltd hrs (see COMM)
<b>WX</b>	METAR dur CARS hrs O/T Legacy AWOS. TAF H24, issue times: 01, 07, 13, 19Z.



<b>SERVICES</b>	
<b>FUEL</b>	JA-1 867-899-8982/8912 1430-24Z Mon-Sat exc hols O/T call out chg PNR 867-899-8982/8912/8976. Credit card not accepted. Credit by prior arrg 867-645-5165/5187, allow 7 working days.
<b>RWY DATA</b>	02T(023°T)/20T(203°T) 4000x100 gravel
<b>RCR</b>	CARS
<b>LIGHTING</b>	02T-AS(TE ME) AP, 20T-AS(TE ME) AP ARCAL-122.1 type K
<b>COMM</b>	
<b>MF</b>	aprt rdo 122.1 5NM 3200 ASL (CAR 602.98)
<b>APRT RDO</b>	122.1 (V) 16-23Z± Mon, 16-24Z± Tue, Thu & Fri, 16-22Z± Wed, 19-22Z± Sat, exc federal observed hols
<b>Legacy AWOS</b>	128.3
<b>NAV</b>	
<b>NDB</b>	YIO 214 (H) N72 41 35 W77 57 03 at A/D
<b>CAUTION</b>	Possible presence of large animals within aprt perimeter. Rwy edge lgt installed higher than std (aprx 27 inches high loc 5' outside rwy edge).

# CANADA FLIGHT SUPPLEMENT / GPH 205

Effective 0901Z 20 November 2008 to 0901Z 15 January 2009

AERODROME/FACILITY DIRECTORY B697

## PONOKA (HOSPITAL & CARE CENTRE) AB (Heli)

CHC4

<b>REF</b>	N52 41 07 W113 35 22 Adj N 17°E UTC-7(6) Elev 2676' A5015 RCAP	
<b>OPR</b>	David Thompson Health Region 403-783-3341 Cert PPR	
<b>FLT PLN</b>	NOTAM FILE CYQF Edmonton 866-WXBRIEF (Toll free within Canada) or 866-541-4102 (Toll free within Canada & USA)	
<b>ACC</b>	Edmonton IFR 888-358-7526 or 780-890-8304/8305	
<b>PAD DATA</b>	65' dia asphalt 87' dia Acft max length 42.5'	
<b>LIGHTING</b>	FL(LO) PNR	
<b>COMM</b>	<b>ATF</b> UNICOM 123.3 ltd hrs O/T tfc 123.3 5NM centred on Ponoka Industrial (Labrie Field) A/D 2.6NM S 5700 ASL	
<b>PRO</b>	Arr/dep 292°-357° fr heli; slope 8%	

## PONOKA INDUSTRIAL (LABRIE FIELD) AB

CEH3

<b>REF</b>	N52 39 07 W113 36 16 1.5SW 17°E UTC-7(6) Elev 2669' A5015 E-15 E-16 LO2 RCAP	
<b>OPR</b>	Town of Ponoka 403-783-4431 Reg	
<b>PF</b>	B-1 D-2,3,4,5,6	
<b>FLT PLN</b>	NOTAM FILE CYQF Edmonton 866-WXBRIEF (Toll free within Canada) or 866-541-4102 (Toll free within Canada & USA)	
<b>ACC</b>	Edmonton IFR 888-358-7526 or 780-890-8304/8305	
<b>SERVICES</b>	<b>FUEL</b> 100LL, MG-2 <b>OIL</b> All <b>S</b> 1,2,3,4,5,6 <b>PVT ADV</b> Park Air Svcs & Ervin Avn 123.2 Triad Avn 123.3 403-783-6800 15-24Z†	
<b>RWY DATA</b>	Rwy 16(164°)/34(344°) 3086x75 asphalt <b>RCR</b> Opr	
<b>LIGHTING</b>	16-(TE ME), 34-(TE ME) ARCAL-123.3 type K	
<b>COMM</b>	<b>ATF</b> UNICOM 123.3 ltd hrs O/T tfc 5NM 5700 ASL	
<b>NAV</b>	<b>NDB</b> PONOKA INDUS D3 363 (L) N52 41 00 W113 36 23 161° 1.8NM to A/D Pvt Unmonitored	
<b>PRO</b>	Rgt hand circuits rwy 16 (CAR 602.96).	
<b>CAUTION</b>	Model acft ops in area aprx 1500' E thld rwy 34; sfc to 500 AGL.	

# CANADA FLIGHT SUPPLEMENT / GPH 205

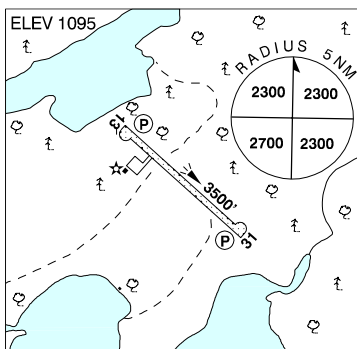
Effective 0901Z 20 November 2008 to 0901Z 15 January 2009

B698 AERODROME/FACILITY DIRECTORY

## POPLAR HILL ON

CPV7

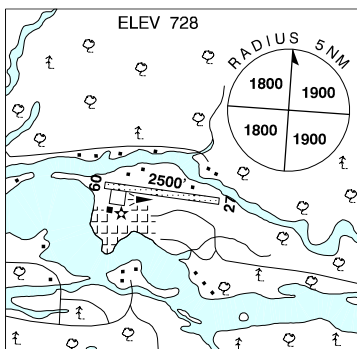
<b>REF</b>	N52 06 48 W94 15 20 Adj NE 1°E UTC-6(5) Elev 1095' A5007 A5017 LO4 E-17 CAP
<b>OPR</b>	Govt of Ontario 807-473-2082 Cert
<b>FLT PLN</b>	NOTAM FILE CYXL
<b>FIC</b>	Winnipeg 866-WXBRIEF (Toll free within Canada) or 866-541-4103 (Toll free within Canada & USA)
<b>RWY DATA</b>	Rwy 13(132°)/31(312°) 3500x100 clay/gravel
<b>RCR</b>	Rwy 31 up 0.59% Opr 14-23Z† Mon-Fri exc hols. Subject to seasonal & climatic variations.
<b>LIGHTING</b>	13-(TE ME) AP, 31-(TE ME) AP ARCAL-123.2 type K
<b>COMM</b>	
<b>ATF</b>	tfc 122.8 5NM 4100 ASL



## POPLAR RIVER MB

CZNG

<b>REF</b>	N53 00 W97 16 Adj N 4°E UTC-6(5) Elev 728' A5016 E-16 E-17
<b>OPR</b>	Govt of Manitoba 204-677-6722 Reg
<b>PF</b>	A-1 C-4 Tml bldg opr 13-18Z†, 19-2115Z† Mon-Fri, clsd Sat, Sun & hols
<b>FLT PLN</b>	NOTAM FILE CYDN
<b>FIC</b>	Winnipeg 866-WXBRIEF (Toll free within Canada) or 866-541-4103 (Toll free within Canada & USA)
<b>RWY DATA</b>	Rwy 09(094°)/27(274°) 2500x60 crushed rock
<b>RCR</b>	APM 204-244-2021 13-18Z†, 19-2115Z† Mon-Fri exc hols O/T 204-244-2849 Rwy soft when wet.
<b>LIGHTING</b>	09-(TE LO), 27-(TE LO) ARCAL-122.8 type J (see CAUTION)
<b>COMM</b>	
<b>ATF</b>	UNICOM ltd hrs O/T tfc 122.8 5NM 3800 ASL
<b>CAUTION</b>	Ocsl pedestrian tfc on the aprt. Rwy edge lgt installed higher than std (aprx 27 inches high loc 5' outside rwy edge).



# CANADA FLIGHT SUPPLEMENT / GPH 205

Effective 0901Z 20 November 2008 to 0901Z 15 January 2009

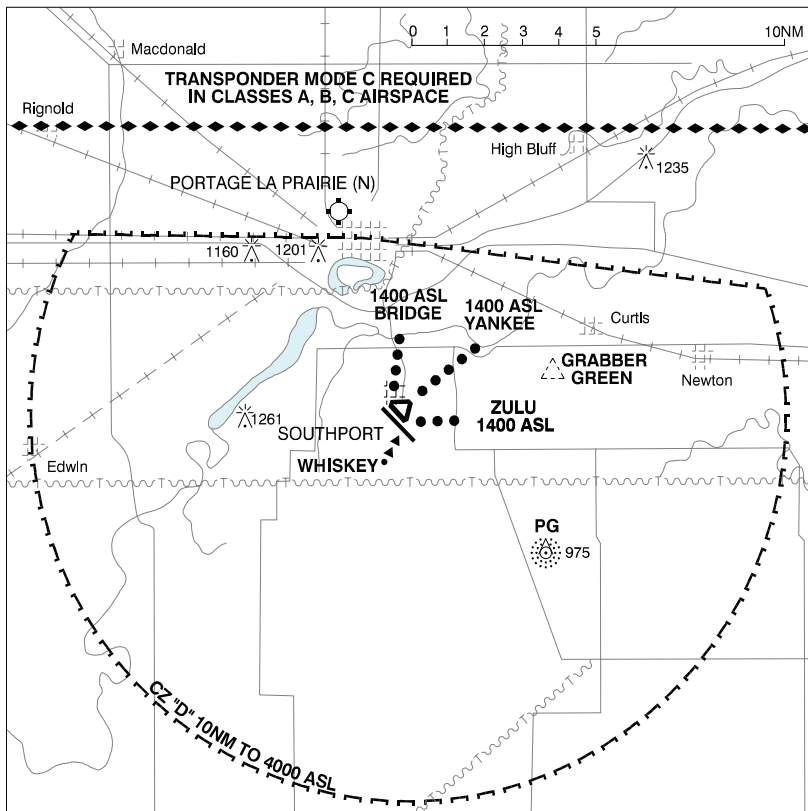
AERODROME/FACILITY DIRECTORY B699

## PORCUPINE PLAIN SK

CKD2

<b>REF</b>	N52 37 11 W103 14 52 1N 10°E UTC-6 Elev 1635' A5016 E-16	
<b>OPR</b>	Muni 306-278-2262 Reg	
<b>PF</b>	B-1 C-2,4,5	
<b>FLT PLN</b>	NOTAM FILE CYQV Edmonton 866-WXBRIEF (Toll free within Canada) or 866-541-4102 (Toll free within Canada & USA)	
<b>SERVICES</b>	<b>S</b> 5	
<b>RWY DATA</b>	Rwy 17(170°)Y35(350°) 2540x90 turf Rwy 08(080°)Y26(260°) 2550x60 turf <b>RCR</b> Opr	
<b>COMM</b>	<b>ATF</b> tfc 123.2 5NM 4700 ASL	
<b>CAUTION</b>	Trees aprx 20' high 100' N of thld rwy 17.	

## PORTAGE VFR TERMINAL PROCEDURES CHART



# CANADA FLIGHT SUPPLEMENT / GPH 205

Effective 0901Z 20 November 2008 to 0901Z 15 January 2009

B700 AERODROME/FACILITY DIRECTORY

## PORTAGE LA PRAIRIE (NORTH) MB

CJZ2

<b>REF</b>	N49 59 33 W98 18 11 Adj NW 6°E UTC-6(5) Elev 860' VTA A5007 E-16 E-17	
<b>OPR</b>	Portage Flying Club Ross Tufford 204-857-2161 Reg	
<b>PF</b>	C-1,2,3,4,5,6 A/D clsd in win	
<b>FLT PLN</b>	NOTAM FILE CYDN <b>FIC</b> Winnipeg 866-WXBRIEF (Toll free within Canada) or 866-541-4103 (Toll free within Canada & USA)	
<b>SERVICES</b>		
<b>FUEL</b>	100LL, MG-1 PNR	
<b>S</b>	4,5,6	
<b>RWY DATA</b>	Rwy 18(184°)/36(004°) 2050x75 turf Rwy 14(146°)/32(326°) 2800x90 turf Rwy 09(095°)/27(275°) 1950x75 turf	
<b>RCR</b>	Casey Gowler 204-857-6074 Ross Tufford 204-857-2161 No win maint	
<b>COMM</b>	<b>ATF</b> tfc 122.8 5NM 3900 ASL excluding the YPG Class "D" CZ. Aprt in close proximity to Southport class "D" CZ, for flt info ctc TWR 126.2 (ltd hrs).	
<b>PRO</b>	Rgt hand circuits rwy 18 & 27 (CAR 602.96), circuit hgt 1600 ASL.	
<b>CAUTION</b>	Bldgs and P-lines 1000' N thld rwy 14 and parallel to E side rwy 14.	

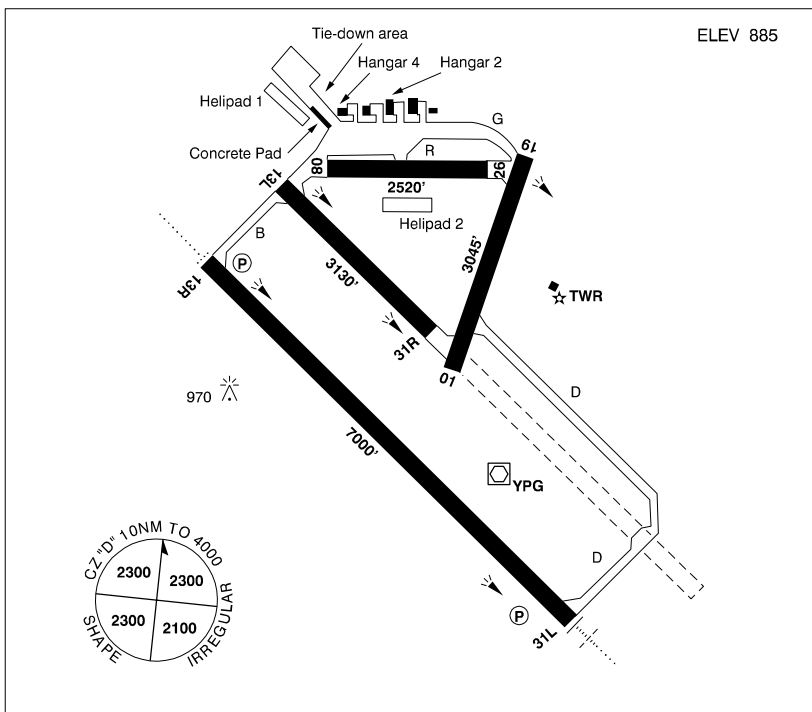
# CANADA FLIGHT SUPPLEMENT / GPH 205

Effective 0901Z 20 November 2008 to 0901Z 15 January 2009

AERODROME/FACILITY DIRECTORY B701

## PORTAGE LA PRAIRIE / SOUTHPORT MB

CYPG



<b>REF</b>	N49 54 11 W98 16 26 4S 6°E UTC-6(5) Elev 885' VTA A5007 E-16 E-17 LO4 HI4 CAP
<b>OPR</b>	Southport Aerospace Centre Inc AIS ctr 204-428-2444/6880, Gen inquiries 204-428-6030 Cert
<b>PF</b>	B-1,2 ltd hrs C-2,3,4,5,6
<b>FLT PLN</b>	NOTAM FILE CYPG
<b>FIC</b>	Winnipeg 866-WXBRIEF (Toll free within Canada) or 866-541-4103 (Toll free within Canada & USA)
<b>WX</b>	W1 Pvt Ops ctr 204-428-2444/2445 METAR 11-23Z‡ Mon-Fri exc hols TAF 14-23Z‡ Mon-Fri, issue times: 13, 18Z‡ (hr will vary with requirements).
<b>SERVICES</b>	Call out chg may be levied for one or more svcs
<b>FUEL</b>	100LL, JA-1, FSII, SP 14-04Z‡ Mon-Fri exc hols. Ctc Tran Svcs 204-428-2435 O/T PNR 204-872-0570 O/T
<b>OIL</b>	80, 100, Turbo Oil 2380
<b>ARFF</b>	2 14-23Z Mon-Fri exc hols
<b>S</b>	5,6 Trans svcs 204-428-2433
<b>PVT ADV</b>	Tran Svcs 123.0

# CANADA FLIGHT SUPPLEMENT / GPH 205

Effective 0901Z 20 November 2008 to 0901Z 15 January 2009

B702 AERODROME/FACILITY DIRECTORY

## PORTAGE LA PRAIRIE / SOUTHPORT MB (Cont'd)

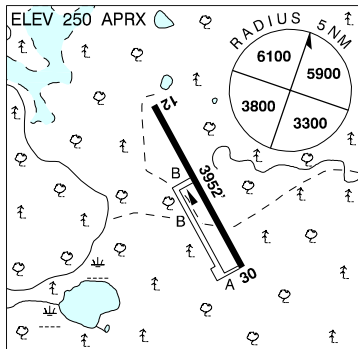
CYPG

<b>RWY DATA</b>	Rwy 13R(128°)/31L(308°) 7000x150 asphalt Rwy 13L(128°)/31R(308°) 3130x150 asphalt Rwy 08(083°)/26(263°) 2520x150 asphalt Rwy 01(013°)/19(193°) 3045x150 asphalt
<b>PAD DATA</b>	Helipad 1 150x50 turf/snow Helipad 2 100x100 turf/snow
<b>APRON</b>	Itinerant acft prkg W of hg 4 on NW apron. Limit 1 night. Jet & large acft prkg on concrete pad on S side of NW apron. Light acft use tie-downs on N side of NW apron.
<b>RCR</b>	Opr CRFI, Ops ctr 204-428-2444. Rwy 08/26 wt rstd to 12,500 lbs, rwy 13R/31L PLR 7.3 ctc Ops mgr 204-428-6030.
<b>LIGHTING</b>	01-(TE ME), 19-(TE ME), 13R-AO(TE HI) P2, 31L-AN(TE HI) P2 ARCAL-126.2 type K
<b>COMM</b>	
<b>ATIS</b>	120.85 14-23Z± Mon-Fri exc hols
<b>GND</b>	121.7 275.8 14-23Z± Mon-Fri exc hols
<b>TWR</b>	126.2 384.2 (E) 14-23Z± Mon-Fri exc hols
<b>ATF</b>	tfc 126.2 23-14Z± Mon-Fri, H24 Sat, Sun & hols 10NM 4000 ASL
<b>NAV</b>	All Nav aids Unmonitored when Twr clsd. 111.8
<b>VOT</b>	111.8
<b>NDB</b>	PORTAGE PG 353 (L) N49 50 30 W98 10 47 308° 4.5NM to thld 31L Pvt
<b>VOR/DME</b>	PORTAGE YPG 114.6 Ch93 N49 53 59 W98 16 02 (900') at A/D Pvt
<b>ILS</b>	IPG 109.7 (Rwy 31L) Pvt
<b>PRO</b>	Rgt hand circuits rwys 13R, 19, 26 & 31R (CAR 602.96). Circuit alt 01/19, 08/26 & 13L/31R 1900 ASL, 13R/31L 2500 ASL. Arr ctc twr 126.2 prior to "D" CZ. VFR circuits & multiple IFR apch for tng by itinerant acft may be rstd due lcl tfc. Extv heli tng NE quad CZ within 5NM. Avoid satellite fld (Grabber Green) N49 54 52 W98 09 38, 4NM NE (see VTPC) or cross at 2500 ASL or above.
<b>HELI</b>	Dep & arr pad 1 or 2 as directed by twr via depicted rtes (see VTPC). Not above 1400 ASL til clear of circuits.
<b>CAUTION</b>	Extv fit tng in the lcl area. Hrs of ops may be extended by NOTAM. Ocsl extv ngt fit tng activity. Attempt ctc with Southport twr 126.2 or 384.2 prior to entering CZ. Hi ints lgt oprg dusk to dawn from hotel roof at N49 58 21 W98 19 46 (4.7NM NNW A/D). Beams projecting upward. Hi ints lgt may create tempo effects to vision.

## PORT ALBERNI (ALBERNI VALLEY REGIONAL) BC

CBS8

<b>REF</b>	N49 19 19 W124 55 52 6NW 19°E UTC-8(7) Elev 250' aprx A5004 E-15 CAP RCAP
<b>OPR</b>	Regional District Alberni-Clayoquot 250-720-2700 Reg
<b>PF</b>	A-1 D-2,3,4,5,6
<b>FLT PLN</b>	NOTAM FILE CYCD
<b>FIC</b>	Kamloops 866-WXBRIEF (Toll free within Canada) or 866-541-4101 (Toll free within Canada & USA)
<b>ACC</b>	For IFR clnc ctc Comox Terminal 250-339-8115 before take off.
<b>SERVICES</b>	
<b>FUEL</b>	100LL, JA
<b>RWY DATA</b>	Rwy 12/30 3952x75 asphalt
<b>RCR</b>	Opr Ltd win maint
<b>COMM</b>	
<b>ATF</b>	tfc 123.0 5NM 3250 ASL
<b>LWIS (Pvt)</b>	122.7





# CANADA FLIGHT SUPPLEMENT / GPH 205

Effective 0901Z 20 November 2008 to 0901Z 15 January 2009

AERODROME/FACILITY DIRECTORY B703

## PORT ALBERNI (ALBERNI VALLEY REGIONAL) BC (Cont'd)

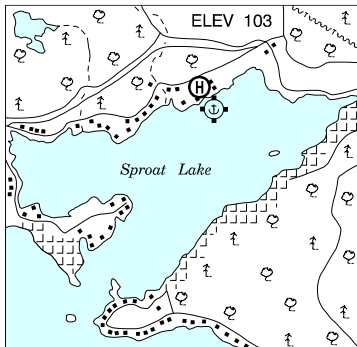
CB88

<b>PRO</b>	For IFR clnc ctc Comox Terminal 250-339-8115 before take off.
<b>CAUTION</b>	Sfc unprepared outside rwy edge.

## PORT ALBERNI / SPROAT LAKE TANKER BASE BC (Heli)

CBT9

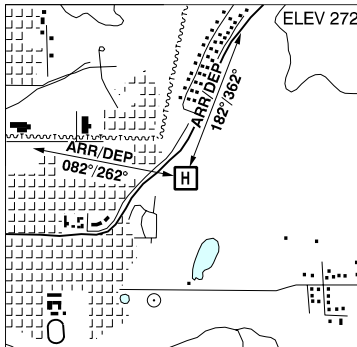
<b>REF</b>	N49 17 24 W124 56 42 3E 19°E UTC-8(7) Elev 103' A5004
<b>OPR</b>	Coulson Flying Tankers 250-724-0584 Reg PPR
<b>PF</b>	A-1 C-2,3,4,5,6
<b>FLT PLN</b> <b>FIC</b>	NOTAM FILE CYCD Kamloops 866-WXBRIEF (Toll free within Canada) or 866-541-4101 (Toll free within Canada & USA)
<b>PAD DATA</b>	43' dia paved, 53' dia paved.
<b>COMM</b> <b>ATF</b> <b>A/G</b>	Port Alberni tfc 123.0 5NM 3250 ASL 164.190
<b>PRO</b>	Arr/dep via unmarked hover area over water S of apron.
<b>CAUTION</b>	Noise sensitive areas to E & W. Water A/D adj, Port Alberni Regional A/D 3NM N.



## PORT ALBERNI (WEST COAST GEN HOSP) BC (Heli)

CBK5

<b>REF</b>	N49 14 54 W124 46 54 19°E UTC-8(7) Elev 272' A5004
<b>OPR</b>	West Coast Gen Hosp 250-723-2135 Cert PPR
<b>PF</b>	A-1,2,3,4 C-5,6
<b>FLT PLN</b> <b>FIC</b>	NOTAM FILE CYCD Kamloops 866-WXBRIEF (Toll free within Canada) or 866-541-4101 (Toll free within Canada & USA)
<b>PAD DATA</b>	55' dia asphalt
<b>LIGHTING</b>	RY/LO PNR ARCAL-123.0 type J
<b>COMM</b> <b>ATF</b>	UNICOM 123.0 5NM 3100 ASL
<b>PRO</b>	Arr/dep to/from 082°/262° or 182°/362°



# CANADA FLIGHT SUPPLEMENT / GPH 205

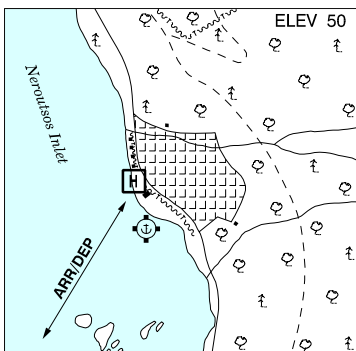
Effective 0901Z 20 November 2008 to 0901Z 15 January 2009

B704 AERODROME/FACILITY DIRECTORY

## PORT ALICE (HOSP) BC (Heli)

**CBB5**

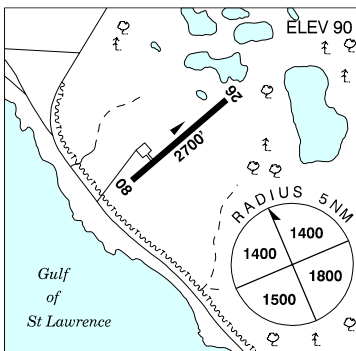
<b>REF</b>	N50 25 36 W127 29 13 Adj Rumble Beach 20°E UTC-8(7) Elev 50' A5004
<b>OPR</b>	Port Alice Hosp 250-284-3555 Reg PPR
<b>PF</b>	B-1,2,4, C-3,5
<b>FLT PLN</b>	NOTAM FILE CYZT
<b>FIC</b>	Kamloops 866-WXBRIEF (Toll free within Canada) or 866-541-4101 (Toll free within Canada & USA)
<b>WX</b>	250-949-6559 1315-0115Z
<b>PAD DATA</b>	43' dia concrete
<b>RCR</b>	Opr
<b>COMM</b>	
<b>ATF</b>	tfc 123.2 5NM 3100 ASL
<b>PRO</b>	Arr/dep to/fr SSW over water.
<b>CAUTION</b>	P-line 200' N 1000 ASL marked. Obstacles to 150 ASL all quads exc SSW over water.



## PORT AU CHOIX NL

**CCM4**

<b>REF</b>	N50 41 20 W57 19 53 1.5SSE 23°W UTC-31/2(21/2) Elev 90' A5011 E-19 F-22
<b>OPR</b>	Govt of Newfoundland & Labrador 709-861-3505 or 709-729-3092 Reg
<b>PF</b>	C-1,2,5 D-3,4
<b>FLT PLN</b>	NOTAM FILE CYYT
<b>FIC</b>	Halifax 866-WXBRIEF or (French) 866-GOMÉTÉO (Toll free within Canada) or 866-541-4106 (Toll free within Canada & USA)
<b>RWY DATA</b>	Rwy 08/26 2700x50 asphalt
<b>RCR</b>	Opr Ltd win maint PNR
<b>COMM</b>	
<b>ATF</b>	tfc 123.2 5NM 3100 ASL
<b>CAUTION</b>	Power line aprx 500' fr thld 08.



# CANADA FLIGHT SUPPLEMENT / GPH 205

Effective 0901Z 20 November 2008 to 0901Z 15 January 2009

AERODROME/FACILITY DIRECTORY B705

## PORT COLBORNE ON

CPE5

<b>REF</b>	N42 52 39 W79 21 10 4.8W 10°W UTC-5(4) Elev 600' A5000 F-21	
<b>OPR</b>	Skydive Burnaby 905-899-1528/734-8320 Reg PPR	
<b>PF</b>	B-1 C-2,3,4,5,6	
<b>FLT PLN</b>	NOTAM FILE CYSN London 866-WXBRIEF (Toll free within Canada) or 866-541-4104 (Toll free within Canada & USA)	
<b>SERVICES</b>		
<b>FUEL</b>	100LL	
<b>OIL</b>	All	
<b>S</b>	1,4,5	
<b>RWY DATA</b>	Rwy 03/21 2200x75 turf Thld 03 displ 800'	
<b>RCR</b>	Opr No win maint. Rwy soft when wet.	
<b>COMM</b>		
<b>ATF</b>	tfc 123.2 5NM 3600 ASL	
<b>A/G</b>	122.9	
<b>PRO</b>	Rgt hand circuits rwy 21 (CAR 602.96). Possible tfc conflict from A/D 2NM E. OcsI release of parachutes Mon-Fri fr 500' above water aprx 1NM S, announced on ATF. CYA513(P) activated by NOTAM when parachuting in progress btwn 2800-14,500 ASL.	

## PORT COLBORNE (GEN HOSP) ON (Heli)

CPX5

<b>REF</b>	N42 52 42 W79 15 36 Adj 10°W UTC-5(4) Elev 575' A5000	
<b>OPR</b>	Port Colborne Gen Hosp 905-834-4501 Cert PPR	
<b>FLT PLN</b>	NOTAM FILE CYSN London 866-WXBRIEF (Toll free within Canada) or 866-541-4104 (Toll free within Canada & USA)	
<b>PAD DATA</b>	86' x 86' asphalt 114' x 114' Rstd max heli length 57.5'	
<b>RCR</b>	Opr	
<b>LIGHTING</b>	RY(LO) RF(FL)	
<b>COMM</b>		
<b>A/G</b>	ambulance dispatch 129.275	
<b>PRO</b>	Arr/dep btwn 225°-275° fr heli.	

# CANADA FLIGHT SUPPLEMENT / GPH 205

Effective 0901Z 20 November 2008 to 0901Z 15 January 2009

B706 AERODROME/FACILITY DIRECTORY

## PORT ELGIN ON

CNL4

<b>REF</b>	N44 24 55 W81 24 52 1.3SW 9°W UTC-5(4) Elev 650' A5000 F-21 LO4 LO6	
<b>OPR</b>	Town Aprt Committee 519-389-5381 May 1-Oct 31 Reg	
<b>PF</b>	B-1 C-2,3,4,5,6	
<b>FLT PLN</b> <b>FIG</b>	NOTAM FILE CYVV London 866-WXBRIEF (Toll free within Canada) or 866-541-4104 (Toll free within Canada & USA)	
<b>SERVICES</b> <b>FUEL</b> <b>OIL</b> <b>S</b>	100LL All 4,5	
<b>RWY DATA</b>	Rwy 06/24 3800x175 turf Thld 06 displ 300' day & 735' ngt Thld 24 displ 400' day & 800' ngt	
<b>RCR</b>	Opr No win maint. Rwy may be soft dur spring & when wet.	
<b>LIGHTING</b>	06-(TE LO), 24-(TE LO) Lgts on by req	
<b>COMM</b> <b>ATF</b>	UNICOM ltd hrs O/T tfc 122.8 5NM 3700 ASL	
<b>CAUTION</b>	Occasionally deer & birds on rwy.	

## PORT ELGIN (PRYDE FIELD) ON

CPG6

<b>REF</b>	N44 27 32 W81 22 47 1.5N 9°W UTC-5(4) Elev 661' A5000 F-21	
<b>OPR</b>	B. Pryde 519-832-5950 Reg PPR	
<b>PF</b>	C-1,2,3,4,5,6	
<b>FLT PLN</b> <b>FIG</b>	NOTAM FILE CYVV London 866-WXBRIEF (Toll free within Canada) or 866-541-4104 (Toll free within Canada & USA)	
<b>RWY DATA</b> <b>RCR</b>	Rwy 13/31 3150x75 turf Thld 13 displ 560', thld 31 displ 150'. Opr Ltd win maint. Rwy may be soft when wet.	
<b>COMM</b> <b>ATF</b>	tfc 122.8 5NM 3700 ASL	
<b>PRO</b>	Rgt hand circuits rwy 13 (CAR 602.96).	
<b>CAUTION</b>	P-lines aprx 25 AGL aprx 430' fr thld 31. Trees aprx 60 AGL aprx 500' fr thld 13. Power pole aprx 40 AGL, painted red & white aprx 275' fr thld 31.	

# CANADA FLIGHT SUPPLEMENT / GPH 205

Effective 0901Z 20 November 2008 to 0901Z 15 January 2009

AERODROME/FACILITY DIRECTORY B707

## PORTERS LAKE NS

CCF4

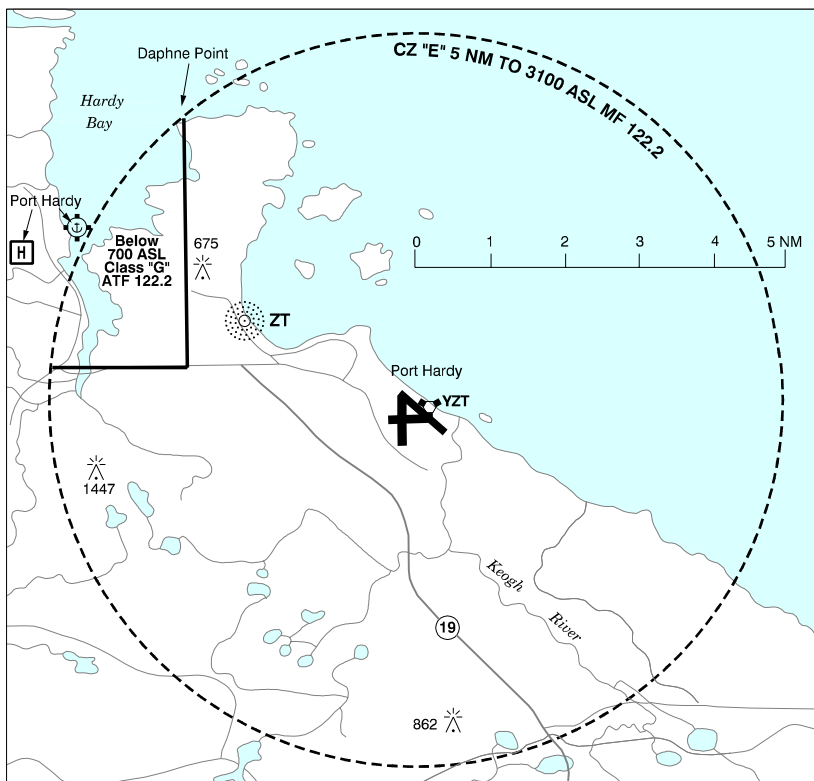
<b>REF</b>	N44 42 36 W63 18 06 2S 19°W UTC-4(3) Elev 20' A5003 F-22 T2	
<b>OPR</b>	R. MacFarlane 902-827-3148 Reg PPR	
<b>PF</b>	B-1 C-2,5 D-3,4,6	
<b>FLT PLN</b>	NOTAM FILE CYHZ <b>FIC</b> Halifax 866-WXBRIEF or (French) 866-GOMÉTÉO (Toll free within Canada) or 866-541-4106 (Toll free within Canada & USA) <b>ACC</b> Moncton 506-867-7176 or 866-480-8200 Flt Plns by Fax 506-867-7180 & include phone numbers where pilot can be reached prior to dep	
<b>RWY DATA</b>	Rwy 15(150°)/33(330°) 2400x100 gravel/turf	
<b>COMM</b>	<b>ATF</b> tfc 123.2 5NM 3000 ASL	
<b>CAUTION</b>	Possible vehicle tfc on access road across rwy 15 at 400'. Seaplane ops vic adj water A/D. Helipad 110' x 110' at thld rwy 15.	

# CANADA FLIGHT SUPPLEMENT / GPH 205

Effective 0901Z 20 November 2008 to 0901Z 15 January 2009

B708 AERODROME/FACILITY DIRECTORY

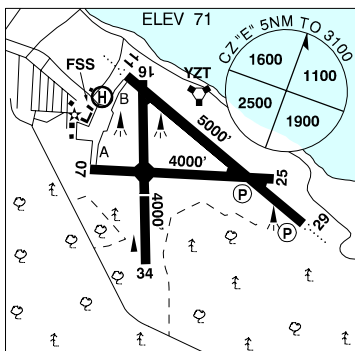
## PORT HARDY VFR TERMINAL PROCEDURES CHART



### PORT HARDY BC

CYZT

<b>REF</b>	N50 40 50 W127 22 00 5.2SE 20°E UTC-8(7) Elev 71' A5004 E-15 LO2 HI3 CAP
<b>OPR</b>	TC 250-949-6424 Fax 250-949-9013 Cert
<b>PF</b>	A-1,2,3,6 C-5 D-4
<b>CUST</b>	AOE/15 888-226-7277 16-08Z±
<b>FLT PLN</b>	NOTAM FILE CYZT Kamloops 866-WXBRIEF (Toll free within Canada) or 866-541-4101 (Toll free within Canada & USA) <b>FIC</b> METAR H24. <b>WX</b> TAF H24, issue times: 01, 07, 13, 19Z. <b>PIK</b> E side of the N-S hallway in the Transport Canada Terminal building, avbl 24 hrs, airside access.



# CANADA FLIGHT SUPPLEMENT / GPH 205

Effective 0901Z 20 November 2008 to 0901Z 15 January 2009

AERODROME/FACILITY DIRECTORY B709

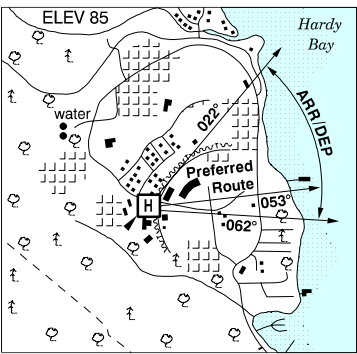
## PORT HARDY BC (Cont'd)

CYZT

<b>SERVICES</b>	
<b>FUEL</b>	100LL, JA-1, HPR, FSII (CON I IP JA-1, FSII)
<b>OIL</b>	All
<b>S</b>	1,2,4,5,6
<b>PVT ADV</b>	Esso Avn 122.95 250-949-5153 17-01Z± (Sep 1-May 31) 15-03Z (Jun 1-Aug 31) O/T 250-949-1037
<b>MIL CON</b>	Esso Avn (Imperial Oil) 250-949-5153/1037
<b>RWY DATA</b>	
	Rwy 11(110°)/29(290°) 5000x150 asphalt Rwy 07(073°)/25(253°) 4000x150 asphalt Rwy 25 up 1% Rwy 16(159°)/34(339°) 4000x150 asphalt Rwy 16 up 0.7% Thld 34 displ 1475' <b>RCR</b> Opr CRFI, Win maint 15-23Z Mon-Fri exc hols O/T PNR, call out charges apply. No win maint rwy 16/34. Rwy 16/34 rstd to acct gr wt of 12,500 lbs or less. PLR/PCN.
<b>LIGHTING</b>	
	07-(TE ME), 25-(TE ME) P2, 11-AO(TE ME), 29-AO(TE ME) P2 OCL to 9° either side of centreline.
<b>COMM</b>	
<b>RADIO</b>	Hardy 122.2 236.6 (E) (emerg only 250-949-6331)
<b>RCO</b>	Pacific rdo 126.7 (FISE)
<b>MF</b>	Hardy rdo 122.2 5NM 3100 ASL excluding class G ATF (CAR 602.98). Refer to Port Hardy VTPC.
<b>PAL</b>	Vancouver Ctr 132.2 266.3
<b>NAV</b>	
<b>NDB</b>	ZT 242 (M) N50 41 57 W127 25 37 100° 2.3NM to A/D
<b>VORTAC</b>	YZT 112.0 Ch 57 N50 41 03 W127 21 55 (39') at A/D
<b>DME</b>	IZT 109.5 Ch 32 N50 40 32 W127 21 12 (30') at A/D
<b>ILS</b>	IZT 109.5 (Rwy 11)
<b>PRO</b>	
	Rgt hand circuits rwys 25 & 29 (CAR 602.96)
<b>CAUTION</b>	
	Trees to 150 AGL within 500' of rwys 07, 11, 25, 29 & 34. Extv eagle activity in the vic of thlds 25 & 29. Radiosonde balloon launches with an ascent rate of 1000 ft/min daily between the hours of 1115-1345Z and 2315-0145Z.

## PORT HARDY (HOSP) BC (Heli)

CBS5

<b>REF</b>	N50 43 15 W127 30 11 20°E UTC-8(7) Elev 85' A5004	
<b>OPR</b>	Port Hardy Hosp 250-949-6161 Cert PPR	
<b>PF</b>	B-1,2,4 C-3,5,6	
<b>FLT PLN</b>	NOTAM FILE CYZT	
<b>FIC</b>	Kamloops 866-WXBRIEF (Toll free within Canada) or 866-541-4101 (Toll free within Canada & USA)	
<b>PAD DATA</b>		
	60' x 60' asphalt 3% slope away from Hosp. Safety area non-standard 74' x74' Cert for max heli length 43' (CAR 602.96)	
<b>RCR</b>	Opr	
<b>COMM</b>		
<b>RADIO</b>	Hardy 122.2 236.6 (E)	
<b>RCO</b>	Pacific rdo 126.7 (FISE)	
<b>ATF</b>	tfc 122.2 2NM 1000 ASL excluding the area within the Port Hardy land A/D. Refer to Port Hardy VTPC.	
<b>PRO</b>		
	Arr/dep sector 022° to 062°, preferred route for noise 053°. See VTPC.	
<b>CAUTION</b>		
	P-line marked with balls on apch. Parking curb borders pad. 4' fence along Safety Area. Floatplane arr/dep area adj.	

# CANADA FLIGHT SUPPLEMENT / GPH 205

Effective 0901Z 20 November 2008 to 0901Z 15 January 2009

## B710 AERODROME/FACILITY DIRECTORY

### PORT HAWKESBURY NS

CYPD

<b>REF</b>	N45 39 24 W61 22 05 2.1N 20°W UTC-4(3) Elev 377' A5003 F-22 LO8 HI6 CAP	
<b>OPR</b>	Muni 902-625-2206/5053 or 902-631-1512 Fax 902-625-7019 Reg	
<b>PF</b>	A-1 12-22Z† C-2,3,4,5,6	
<b>FLT PLN</b>	NOTAM FILE CYQY <b>FIC</b> Halifax 866-WXBRIEF or (French) 866-GOMÉTÉO (Toll free within Canada) or 866-541-4106 (Toll free within Canada & USA) <b>ACC</b> Moncton 506-867-7176 or 866-480-8200 Flt Plns by Fax 506-867-7180 & include phone numbers where pilot can be reached prior to dep	
<b>SERVICES</b>	Call out chg after hrs 902-625-2206/902-625-5053 PNR <b>FUEL</b> 100LL, JA-1 12-22Z† <b>OIL</b> 15W50 <b>S</b> 1,2,3,4,5,6	
<b>RWY DATA</b>	Rwy 11(110°)/29(290°) 5000x150 asphalt Rwy 29 down 0.82%	
<b>LIGHTING</b>	11-AS(TE ME), 29-(TE ME) ARCAL-122.8 key mic 3 times for rwy lgts, 7 times for RIL & 3 times to turn off RIL. RIL avbl for rwy 11 only.	
<b>COMM</b>	<b>DRCO</b> Halifax rdo 126.7 (FISE) <b>ATF</b> UNICOM 122.8 12-22Z†, O/T tfc 122.8 5NM 3400 ASL	
<b>NAV</b>	<b>NDB</b> PD 229 (L) N45 39 19 W61 16 10 292° 3.7NM to thld 29	
<b>CAUTION</b>	Ocsl blasting to 1000 ASL 3NM SW airport.	

### PORT HOPE SIMPSON NL

CCP4

<b>REF</b>	N52 31 41 W56 17 10 1S 24°W UTC-4(3) Elev 347' A5020 E-19 LO7 CAP RCAP	
<b>OPR</b>	Govt of Newfoundland & Labrador 709-896-7840 Cert	
<b>PF</b>	C-1,2,4,5	
<b>FLT PLN</b>	NOTAM FILE CYAY <b>FIC</b> Halifax 866-WXBRIEF or (French) 866-GOMÉTÉO (Toll free within Canada) or 866-541-4106 (Toll free within Canada & USA) <b>ACC</b> Gander 709-651-5225 or 888-751-5225. Flt Plns by Fax 709-651-5205 & include phone numbers where pilot can be reached prior to dep.	
<b>RWY DATA</b>	Rwy 12(122°)/30(302°) 2500x75 gravel <b>RCR</b> Opr 709-960-0383/0247 Ltd win maint, ctc opr	
<b>LIGHTING</b>	12-AS(TE ME) AV 4°, 30-AS(TE ME) AV 4° ARCAL-122.8 type K, key mic 7 times for RIL.	



# CANADA FLIGHT SUPPLEMENT / GPH 205

Effective 0901Z 20 November 2008 to 0901Z 15 January 2009

AERODROME/FACILITY DIRECTORY B711

## PORT HOPE SIMPSON NL (Cont'd)

CCP4

<b>COMM</b>	<b>ATF</b> tfc 122.8 5NM 3300 ASL
<b>NAV</b>	<b>NDB</b> 6F 367 (L) N52 31 13 W56 17 42 055° 0.6NM to A/D Pvt Unmonitored

## PORT McNEILL BC

CAT5

<b>REF</b>	N50 34 32 W127 01 43 2SE 20°E UTC-8(7) Elev 225' A5004 E-15	
<b>OPR</b>	Town 250-956-3111/4444 Reg	
<b>PF</b>	A-1 C-2,3,4,5 D-6	
<b>FLT PLN</b>	<b>FIC</b> NOTAM FILE CYZT Kamloops 866-WXBRIEF (Toll free within Canada) or 866-541-4101 (Toll free within Canada & USA)	
<b>SERVICES</b>	<b>FUEL</b> 100LL 250-956-2376/4444, JA avbl for heli 250-956-2244, other aircraft on a call out basis from 250-956-3333 <b>S</b> 2,4,5	
<b>RWY DATA</b>	Rwy 06(061°)/24(241°) 2400x36 asphalt Rwy 11(112°)/29(292°) 3650x75 gravel Thld 11 displ 350' Thld 29 displ 100' Rwy 29 down 0.41%	
<b>RCR</b>	APM 250-956-4444/949-1932 Ltd win maint	
<b>LIGHTING</b>	11-(TE LO), 29-(TE LO) ARCAL-122.8 type J	
<b>COMM</b>	<b>RCO</b> Pacific rdo (Port Hardy) 126.7 (FISE) (may not be receivable on the ground) <b>ATF</b> UNICOM 122.8 2NM 1800 ASL	
<b>CAUTION</b>	Rwy 06/24 15' lower than rwy 11/29. 10' drop-off either side of rwy 11/29 & thld 29. Ground rises rgt of thld 29. 100' trees 400' fr thld 11. Terrain rises rapidly to the W. Ocsl blasting to 5600 ASL 14NM SW aprt.	

## PORT McNEILL (HOSP) BC (Heli)

CBM9

<b>REF</b>	N50 34 57 W127 04 07 Adj SE 20°E UTC-8(7) Elev 150' aprx A5004	
<b>OPR</b>	District Hosp 250-956-4461 Cert PPR	
<b>PF</b>	A-1,4 C-2,5	
<b>FLT PLN</b>	<b>FIC</b> NOTAM FILE CYZT Kamloops 866-WXBRIEF (Toll free within Canada) or 866-541-4101 (Toll free within Canada & USA)	
<b>PAD DATA</b>	40' dia asphalt 120' x 120'	
<b>COMM</b>	<b>ATF</b> tfc 122.8 3NM 1700 ASL	
<b>PRO</b>	Arr/dep from N use Noise Abatement profile for acft type.	
<b>CAUTION</b>	Trees aprx 100' high 100' E of heli. Terrain rises rapidly to W of rwy.	

# CANADA FLIGHT SUPPLEMENT / GPH 205

Effective 0901Z 20 November 2008 to 0901Z 15 January 2009

B712 AERODROME/FACILITY DIRECTORY

## PORT-MENIER QC

CPYP

<b>REF</b>	N49 50 11 W64 17 19 2.7E 22°W UTC-5(4) Elev 167' A5011 E-19 F-22 LO7 HI6 CAP	
<b>OPR</b>	Govt of Quebec 418-535-0327 Cert	
<b>PF</b>	A-1 C-2,3,4,5,6	
<b>FLT PLN</b>	(bil) NOTAM FILE CYZV Québec 866-GOMÉTÉO or 866-WXBRIEF (Toll free within Canada) or 866-541-4105 (Toll free within Canada & USA) <b>ACC</b> Montréal 800-633-1353	
<b>RWY DATA</b>	Rwy 11(113°)/29(293°) 4886x150 asphalt Rwsy 11 & 29 up 0.5% first 1800' <b>RCR</b> Opr 1245-2130Z± Mon-Fri PLR	
<b>LIGHTING</b>	11-AD AS(TE ME) P2, 29-AS(TE ME) P2 ARCAL-123.5 type K	
<b>COMM</b>	<b>ATF</b> UNICOM (AU) ltd hrs (French only) O/T corridor tfc 123.5 aprx 55NM wide along Jacques Cartier Strait, up to and including 12,500 ASL, see Section C Quebec.	
<b>NAV</b>	<b>NDB</b> PN 360 (M) N49 50 15 W64 23 11 113° 3.4NM to thld rwy 11	
<b>CAUTION</b>	Deer in vic of rwsy.	

## PORT PERRY (COMMUNITY MEM HOSP) ON (Heli)

CPX6

<b>REF</b>	N44 06 19 W78 57 17 Adj W 11°W UTC-5(4) Elev 875' VTA A5000	
<b>OPR</b>	Community Mem Hosp 905-985-7321 Cert PPR	
<b>FLT PLN</b>	NOTAM FILE CYOO London 866-WXBRIEF (Toll free within Canada) or 866-541-4104 (Toll free within Canada & USA)	
<b>PAD DATA</b>	86' x 86' asphalt 114' x 114' Rstd max heli length 57.5' <b>RCR</b> Opr	
<b>LIGHTING</b>	DR RY(LO) RF(FL)	
<b>PRO</b>	Arr/dep 250° fr heli. Rstd to multi-engine helicopters only.	
<b>CAUTION</b>	Twr painted & lgt'd 1125 ASL 250 AGL 2NM E of aprt at N44 06 43 W78 54 58.	

# CANADA FLIGHT SUPPLEMENT / GPH 205

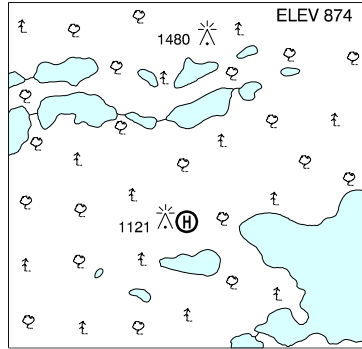
Effective 0901Z 20 November 2008 to 0901Z 15 January 2009

AERODROME/FACILITY DIRECTORY B713

## POSTE LEMOYNE (COMPLEX LG-3) QC (Heli)

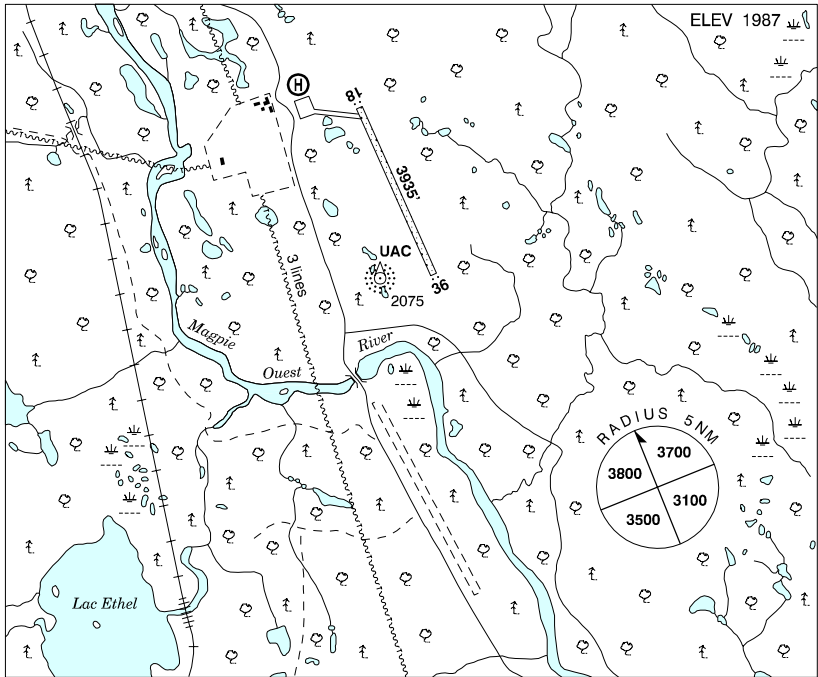
CSY6

<b>REF</b>	N53 28 58 W75 01 53 5E 19°W UTC-5(4) Elev 874' A5018 A5019
<b>OPR</b>	Hydro-Québec 819-638-2988 Fax 819-638-2976 Reg PPR
<b>PF</b>	C-1 PNR
<b>FLT PLN</b>	(bil) NOTAM FILE CYGL Québec 866-GOMÉTÉO or 866-WXBRIEF (Toll free within Canada) or 866-541-4105 (Toll free within Canada & USA)
<b>PAD DATA</b>	115' x 115'
<b>RCR</b>	Ltd win maint
<b>COMM</b>	
<b>ATF</b>	tfc 123.2 5NM 3900 ASL



## POSTE MONTAGNAIS (MILE 134) QC

CSF3



<b>REF</b>	N51 53 19 W65 42 54 22°W UTC-5(4) Elev 1987' A5010 E-19 LO7 CAP
<b>OPR</b>	Hydro-Québec 418-964-3666 Fax 418-964-4307 Reg PPR
<b>PF</b>	C-1,2,3
<b>FLT PLN</b>	(bil) NOTAM FILE CYZV
<b>FIC</b>	Québec 866-GOMÉTÉO or 866-WXBRIEF (Toll free within Canada) or 866-541-4105 (Toll free within Canada & USA)
<b>ACC</b>	Montréal 800-633-1353

# CANADA FLIGHT SUPPLEMENT / GPH 205

Effective 0901Z 20 November 2008 to 0901Z 15 January 2009

## B714 AERODROME/FACILITY DIRECTORY

### POSTE MONTAGNAIS (MILE 134) QC (Cont'd)

CSF3

<b>SERVICES</b>	PPR charges may be levied for one or more svcs
<b>FUEL</b>	JA-1 PNR
<b>S</b>	1
<b>RWY DATA</b>	Rwy 18/36 3935x75 gravel
<b>RCR</b>	Opr Win maint 12-22Z† Mon-Fri
<b>LIGHTING</b>	18-AS(TE HI), 36-AS(TE HI) Rwy lgts H24, RIL O/R
<b>COMM</b>	
<b>CLNC DEL</b>	For IFR clnc ctc Montréal ACC at 800-633-1353
<b>ATF</b>	UNICOM (AU) ltd hrs O/T tfc 131.7 5NM 5000 ASL
<b>NAV</b>	
<b>NDB</b>	ERIC UAC 250 (M) N51 53 01 W65 43 00 034° 0.3NM to A/D
<b>CAUTION</b>	Possible win maint eqpt on rwy outside unicom ops hrs.

### POSTVILLE NL

CCD4

<b>REF</b>	N54 54 37 W59 47 07 Adj 26°W UTC-4(3) Elev 223' A5020 E-19 LO7 CAP	
<b>OPR</b>	Govt of Newfoundland & Labrador 709-896-7840 Cert	
<b>PF</b>	C-1,2,4,5	
<b>FLT PLN</b>	NOTAM FILE CYYR Halifax 866-WXBRIEF or (French) 866-GOMÉTÉO (Toll free within Canada) or 866-541-4106 (Toll free within Canada & USA)	
<b>ACC</b>	Gander 709-651-5225 or 888-751-5225. Fit Plns by Fax 709-651-5205 & include phone numbers where pilot can be reached prior to dep.	
<b>RWY DATA</b>	Rwy 06(059°)/24(239°) 2576x75 gravel Rwy 06 down 1.42% <b>RCR</b> Opr 709-479-9750/9819 Ltd win maint	
<b>LIGHTING</b>	06-AS(TE ME) AP 4°, 24-AS(TE ME) AP 4° ARCAL-122.8 type K, key mic 7 times for RIL.	
<b>COMM</b>		
<b>ATF</b>	tfc 122.8 5NM 3200 ASL	
<b>NAV</b>		
<b>NDB</b>	3R 366 (L) N54 54 27 W59 47 49 089° 0.4NM to A/D Pvt Unmonitored	
<b>PRO</b>	Rgt hand circuits rwy 24 (CAR 602.96).	

### POTVIN HELI-BASE QC — See DOBLEAU-MISTASSINI

# CANADA FLIGHT SUPPLEMENT / GPH 205

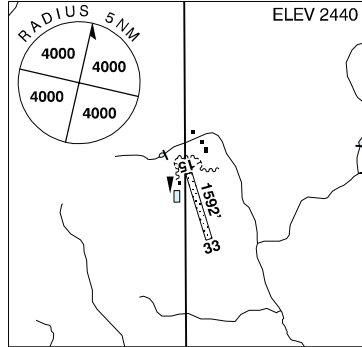
Effective 0901Z 20 November 2008 to 0901Z 15 January 2009

AERODROME/FACILITY DIRECTORY B715

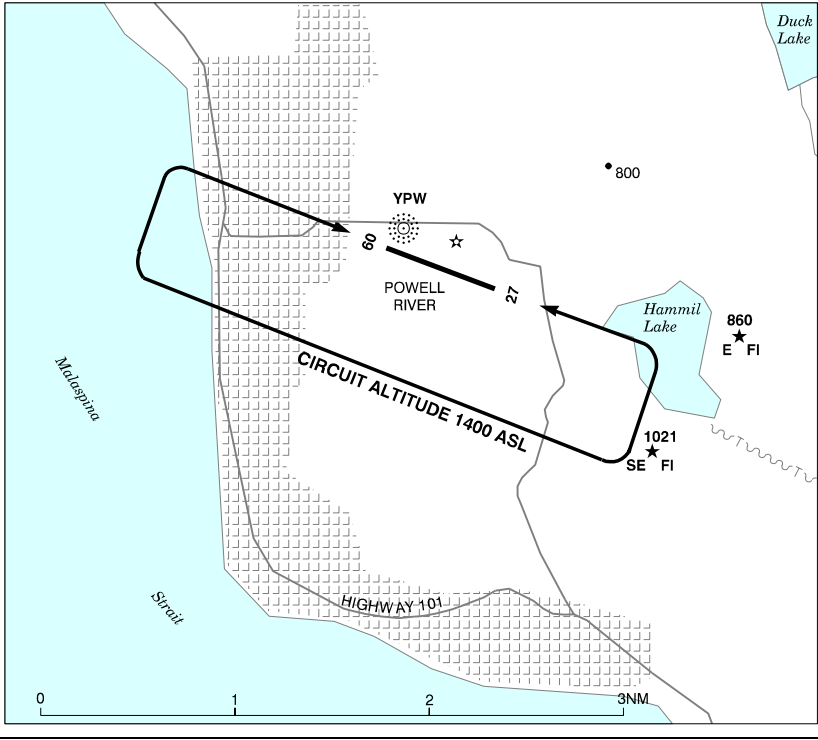
## POVERTY VALLEY SK

CPV9

<b>REF</b>	N50 02 20 W107 15 22 13°E UTC-6 Elev 2440' A5006 E-16
<b>OPR</b>	N. Amthor 306-553-2227 Reg
<b>FLT PLN</b>	NOTAM FILE CYYN
<b>FIC</b>	Edmonton 866-WXBRIEF (Toll free within Canada) or 866-541-4102 (Toll free within Canada & USA)
<b>PF</b>	C-1
<b>RWY DATA</b>	Rwy 15(150°)/33(330°) 1592x30 grass
<b>COMM</b>	
<b>ATF</b>	tfc 123.2 5NM 5400 ASL



## POWELL RIVER VFR TERMINAL PROCEDURES CHART - NIGHT CIRCUIT PROCEDURE



# CANADA FLIGHT SUPPLEMENT / GPH 205

Effective 0901Z 20 November 2008 to 0901Z 15 January 2009

B716 AERODROME/FACILITY DIRECTORY

## POWELL RIVER BC

CYPW

<b>REF</b>	N49 50 03 W124 30 01 Adj E 19°E UTC-8(7) Elev 425' A5004 E-15 LO2 CAP	
<b>OPR</b>	District of Powell River 604-485-6291 Cert	
<b>PF</b>	B-1 C-2,3,4,5,6	
<b>FLT PLN</b>	NOTAM FILE CYBL <b>FIC</b> Kamloops 866-WXBRIEF (Toll free within Canada) or 866-541-4101 (Toll free within Canada & USA) <b>ACC</b> For IFR clnc ctc Comox Terminal 250-339-8115 before take off. <b>WX</b> METAR 15-03Z (DT 13-02Z)	
<b>SERVICES</b>	<b>FUEL</b> 100LL, JA-1 (self-serve Visa & Mastercard) 604-485-7135 <b>OIL</b> 100, 15W50 <b>S</b> 2,3,4,5	
<b>RWY DATA</b>	Rwy 09/27 3621x150 asphalt Rwy 09 up 1.5% <b>RCR</b> Opr PLR/PCN	
<b>LIGHTING</b>	09-AS(TE ME) P1, 27-AS(TE ME) P1 4° ARCAL-123.0 type K, exc RILS on high setting only. Both PAPI opr cont at medium intensity.	
<b>COMM</b>	<b>RCO</b> Pacific rdo (Campbell River) 126.7 (FISE) (May not be receivable on gnd) <b>MF</b> tfc 123.0 5NM 3400 ASL <b>TML</b> Comox 123.7 227.6	
<b>NAV</b>	<b>NDB</b> YPW 382 (L) N49 50 12 W124 30 05 at A/D <b>DME</b> 9S 109.3 Ch 30 N49 50 08 W124 29 57 at A/D Pvt	
<b>PRO</b>	Rgt hand circuits rwy 09 (CAR 602.96). Two hazard bcns 2NM E A/D. Conduct ngt circuits pro W of hazard bcns; see VTPC. For IFR clnc ctc Comox Terminal 250-339-8115 before take off.	
<b>CAUTION</b>	Only pilots familiar with terrain should use this aprt dur hrs of darkness. Ngt ops not recommended unless both hazard bcns are oprg. Trees aprx 250' S of rwy edge along full-length of rwy, trees to 150 AGL. Ocsl parajumps at A/D wknds, daylight hrs. 2 marked power poles to 25', 500' W of thld 09, 170' N & S of rwy centreline. Deer in vicinity of rwy.	

# CANADA FLIGHT SUPPLEMENT / GPH 205

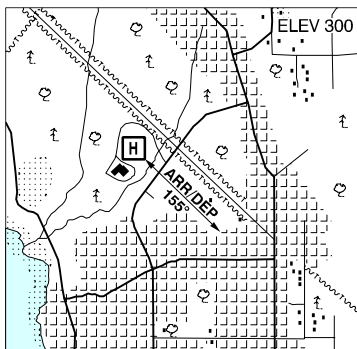
Effective 0901Z 20 November 2008 to 0901Z 15 January 2009

AERODROME/FACILITY DIRECTORY B717

## POWELL RIVER (HOSP) BC (Heli)

CPW8

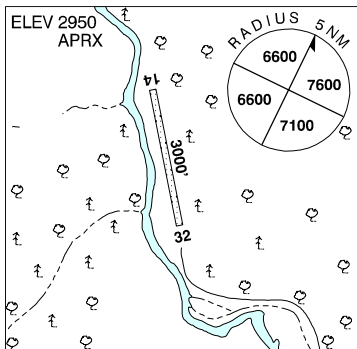
<b>REF</b>	N49 51 05 W124 31 02 19°E UTC-8(7) Elev 300' A5004
<b>OPR</b>	Powell River Community Health Centre 604-485-3211 Cert PPR
<b>PF</b>	A-1,2,3,4 C-5,6
<b>FLT PLN</b>	NOTAM FILE CYBL
<b>FIC</b>	Kamloops 866-WXBRIEF (Toll free within Canada) or 866-541-4101 (Toll free within Canada & USA)
<b>PAD DATA</b>	31' x 31' asphalt 105' x 160' max length 53' Opr
<b>RCR</b>	
<b>COMM</b>	<b>MF</b> tfc 123.0 5NM centred on Powell River aprt 3400 ASL (CAR 602.98)
<b>PRO</b>	Single arr/dep path brg 155° fr heli.
<b>CAUTION</b>	P-lines to the N parallel to arr/dep path.



## PRAIRIE CREEK NT

CBH4

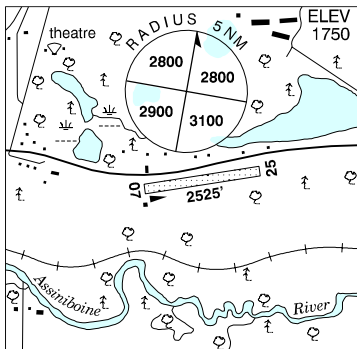
<b>REF</b>	N61 33 53 W124 48 54 26°E UTC-8(7) Elev 2950' aprx A5029 D-12
<b>OPR</b>	Canadian Zinc Corp 604-688-2001 SATCOM 600-700-2454 Reg PPR
<b>FLT PLN</b>	NOTAM FILE CYFS
<b>FIC</b>	North Bay 866-WXBRIEF (Toll free within Canada) or 866-541-4109 (Toll free within Canada & USA)
<b>ACC</b>	Edmonton IFR 888-358-7526 or 780-890-8304/8305
<b>RWY DATA</b>	Rwy 14/32 3000x100 gravel
<b>RCR</b>	Opr No maint Clsd 1 Sep-30 Apr
<b>COMM</b>	<b>ATF</b> UNICOM ltd hrs O/T tfc 122.8 5NM 6000 ASL



## PREECEVILLE SK

CJK9

<b>REF</b>	N51 57 W102 39 1SE 10°E UTC-6 Elev 1750' A5006 E-16
<b>OPR</b>	Town 306-547-2810 Reg
<b>PF</b>	C-1
<b>FLT PLN</b>	NOTAM FILE CYQV
<b>FIC</b>	Edmonton 866-WXBRIEF (Toll free within Canada) or 866-541-4102 (Toll free within Canada & USA)
<b>RWY DATA</b>	Rwy 07(072°)/25(252°) 2525x150 turf
<b>RCR</b>	Opr Ltd win maint
<b>COMM</b>	<b>ATF</b> tfc 123.2 5NM 4800 ASL



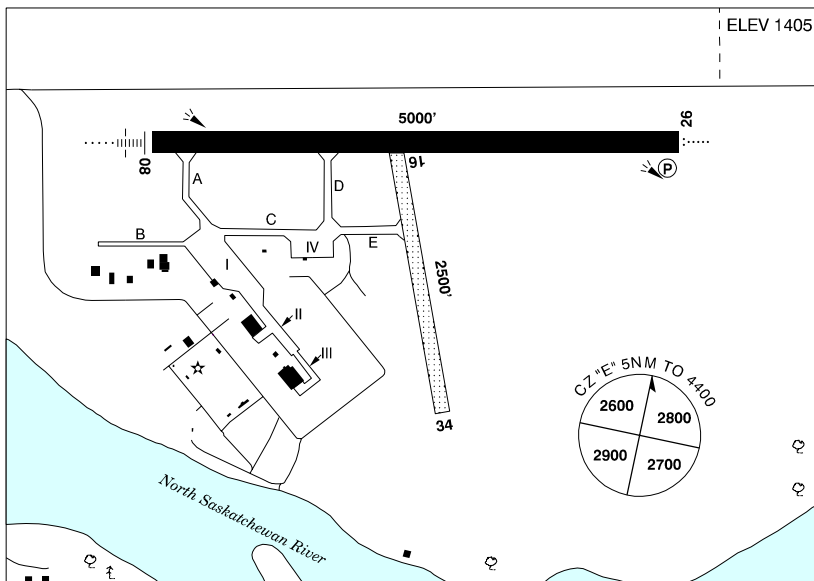
# CANADA FLIGHT SUPPLEMENT / GPH 205

Effective 0901Z 20 November 2008 to 0901Z 15 January 2009

B718 AERODROME/FACILITY DIRECTORY

## PRINCE ALBERT (GLASS FIELD) SK

CYPA



<b>REF</b>	N53 12.51 W105 40 22 1NE 12°E UTC-6 Elev 1405' A5015 E-16 LO2 HI3 CAP
<b>OPR</b>	City 306-953-4900 Cert
<b>PF</b>	A-1,2,3 C-4,5,6
<b>FLT PLN</b>	NOTAM FILE CYPA
<b>FIC</b>	Edmonton 866-WXBRIEF (Toll free within Canada) or 866-541-4102 (Toll free within Canada & USA)
<b>WX</b>	METAR H24.
<b>PIK</b>	TAF H24, issue times: 01, 07, 13, 19Z. NAV CANADA ops bldg, airside access.
<b>SERVICES</b>	Call out chg may be levied for one or more svcs
<b>FUEL</b>	100LL, JA-1, SP, HPR
<b>OIL</b>	All
<b>S</b>	1,2,3,4,5,6
<b>PVT ADV</b>	Snowbird Petroleum Ltd 129.45 306-764-1404 or 306-961-4640 14-24Z Mon-Thu, 14-0230Z Fri, 16-22Z Sat, 17-01Z Sun, O/T call out chg
<b>RWY DATA</b>	Rwy 08(078°)/26(258°) 5000x150 asphalt Rwy 16(158°)/34(338°) 2500x100 turf
<b>TWY</b>	Twy B no vehicle control.
<b>RCR</b>	APM 306-953-4900/4966 12-2030Z Mon-Fri, May 1-Oct 31; 11-2230Z Mon-Fri, Nov 1-Apr 30 CRFI, PLR/PCN. Rwy 16/34 ruf.
<b>LIGHTING</b>	08-AN(TE HI), 26-AO(TE HI) P2
<b>COMM</b>	
<b>RADIO</b>	122.3 262.0 (E) (emerg only 306-765-8801)
<b>RCO</b>	Edmonton rdo 123.15 (FISE) 126.7 (FISE)
<b>MF</b>	rdo 122.3 5NM 4400 ASL (CAR 602.98)
<b>PAL</b>	Winnipeg Ctr 133.9
<b>VDF</b>	122.3



# CANADA FLIGHT SUPPLEMENT / GPH 205

Effective 0901Z 20 November 2008 to 0901Z 15 January 2009

AERODROME/FACILITY DIRECTORY B719

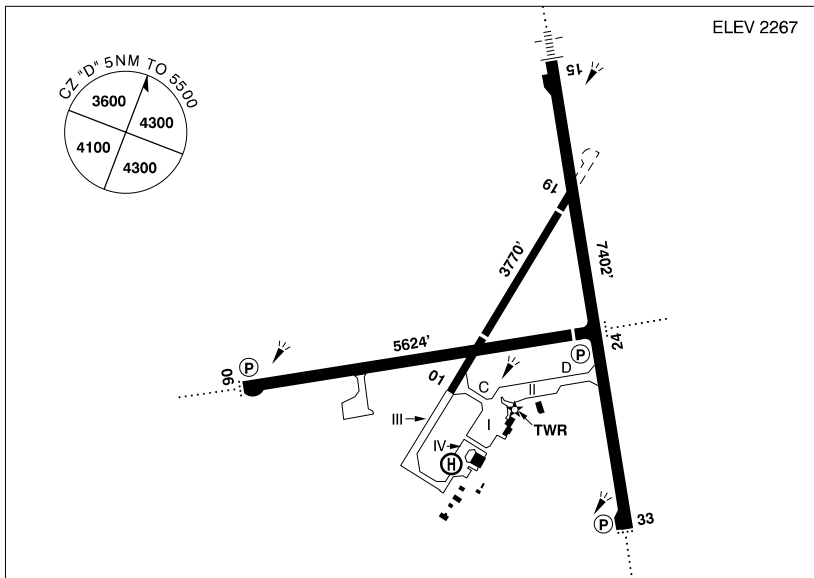
## PRINCE ALBERT (GLASS FIELD) SK (Cont'd)

CYPA

<b>NAV</b>	<b>NDB</b> PRINCE ALBERT PA 347 (L) N53 13 05 W105 47 43 078° 4.0NM to thld 08 GLASS ZPA 372 (L) N53 13 02 W105 32 40 258° 4.2NM to thld 26
	<b>VOR/DME</b> PRINCE ALBERT YPA 113.0 Ch 77 N53 12 59 W105 40 00 (1433') at A/D
	<b>ILS</b> IPA 110.3 (Rwy 08/26) RVR
<b>PRO</b>	Rgt hand circuits rwy 26 (CAR 602.96).

## PRINCE GEORGE BC

CYXS



<b>REF</b>	N53 53 22 W122 40 44 2.8SE 21°E UTC-8(7) Elev 2267' A5014 E-15 LO1 HI3 CAP
<b>OPR</b>	Prince George Airport Authority 250-963-2400 Cert
<b>PF</b>	A-1,2,3,6 C-4,5
<b>CUST</b>	AOE/15 888-226-7277 1430-0430Z‡ dly AOE/30 (120 with staged off-loading) 1630-0030Z‡ Mon-Fri exc hols
<b>FLT PLN</b>	NOTAM FILE CYXS
<b>FIC</b>	Kamloops 866-WXBRIEF (Toll free within Canada) or 866-541-4101 (Toll free within Canada & USA)
<b>WX</b>	METAR H24. TAF H24, issue times: 01, 07, 13, 19Z.
<b>PIK</b>	ATB main floor room 142, airside access
<b>SERVICES</b>	
<b>FUEL</b>	100LL, F-34, JB, HPR (CON S IP JA-1, FSII)
<b>OIL</b>	All
<b>S</b>	1,2,3,4
<b>ARFF</b>	5 13-08Z‡, O/T call out chg. 2 hrs PNR, aprt clsd to acft 20 seats & abv exc for diversions or as an altn A/D without PPR.
<b>PVT ADV</b>	Esso 122.85 250-963-7911, Shell 129.4 250-963-7345
<b>MIL CON</b>	Airconsol Aviation Svcs Ltd ULC (Shell) 250-963-7345

# CANADA FLIGHT SUPPLEMENT / GPH 205

Effective 0901Z 20 November 2008 to 0901Z 15 January 2009

## B720 AERODROME/FACILITY DIRECTORY

### PRINCE GEORGE BC (Cont'd)

CYXS

<b>RWY DATA</b>	Rwy 15(150°)/33(330°) 7402x150 asphalt Rwy 15 down 0.4% Rwy 06(060°)/24(240°) 5624x150 asphalt Thld 24 displ 400'. Rwy 24 up 0.9% Rwy 01(010°)/19(190°) 3770x75 asphalt Thld 01 displ 1000'. Thld 19 displ 370' <b>RCR</b> Opr 1445-0615Z± Sun-Fri, 1445-04Z± Sat. Rwy 01/19 rstd to 12,500 lbs for ldg & tkof day only. Win maint 1330-0630Z± O/T 2hr PNR cost recovery. CRFI, PLR/PCN.
<b>LIGHTING</b>	06-AD (non-std 2800') AS(TE ME) P2, 24-AD (non-std 2600') AS(TE ME) P2, 15-AN(TE HI), 33-AD AS(TE HI) P2, 01-19 lit as twy PAPI rwy 24 OCL to 5NM ARCAL-118.3 type K when twr clsd
<b>COMM</b>	<b>RCO</b> Williams Lake rdo 118.3 (RAAS) 07-14Z± Pacific rdo 122.1 (FISE) 126.7 (FISE) <b>GND</b> 121.9 14-07Z± <b>TWR</b> 118.3 (V) 14-07Z± (emerg only 250-963-9177) <b>MF</b> Williams Lake rdo 118.3 07-14Z± 5NM 5500 ASL (CAR 602.98) (emerg only 250-989-4415) <b>PAL</b> Vancouver Ctr 133.8 231.95
<b>NAV</b>	<b>VOT</b> 115.7 <b>NDB</b> XS 272 (M) N53 49 42 W122 39 15 332° 3.1NM to A/D NORTHWOOD ZXS 260 (L) N53 58 03 W122 41 24 150° 4.1NM to A/D <b>VOR/DME</b> YXS 112.3 Ch 70 N53 53 39 W122 27 20 (4051') 248° 7.9NM to A/D Scalloping may be experienced on all radials from 20-60 NM <b>ILS</b> IXS 109.5 (Rwy 15/33) RVR
<b>PRO</b>	Rgt hand circuits rwys 19, 24 & 33 (CAR 602.96).
<b>CAUTION</b>	Tall vehicles crossing 910' N thld rwy 15. Extv bird activity dur spring & fall. Parajumping activity vic Beaverley A/D 8NM SW to 12,500 ASL by NOTAM, monitor 122.1. Radiosonde balloon launches with an ascent rate of 1000 ft/min daily between the hours of 1115-1345Z & 2315-0145Z.

### PRINCE GEORGE (NORTH CARIBOO AIR PARK) BC

CBW8

<b>REF</b>	N54 00 29 W123 01 23 21°E UTC-8(7) Elev 2500' aprx A5014 E-15	
<b>OPR</b>	North Cariboo Air Park 250-967-4300 Reg PPR	
<b>PF</b>	C-1 D-2,4,5,6	
<b>FLT PLN</b>	<b>NOTAM FILE</b> CYXS <b>FIC</b> Kamloops 866-WXBRIEF (Toll free within Canada) or 866-541-4101 (Toll free within Canada & USA)	
<b>SERVICES</b>	<b>S</b> 1,4	
<b>RWY DATA</b>	Rwy 06/24 1968x100 turf/snow <b>RCR</b> Opr No win maint, skis only. Rwy soft in spring.	
<b>COMM</b>	<b>ATF</b> tfc 123.2 5NM 5500 ASL	
<b>CAUTION</b>	Downdrafts may be encountered on apch area of rwy 24 due to ravine. Unmarked hydro poles in apch rwy 06.	

# CANADA FLIGHT SUPPLEMENT / GPH 205

Effective 0901Z 20 November 2008 to 0901Z 15 January 2009

AERODROME/FACILITY DIRECTORY B721

## PRINCE GEORGE (PACIFIC WESTERN HELICOPTERS) BC (Heli)

CBG8

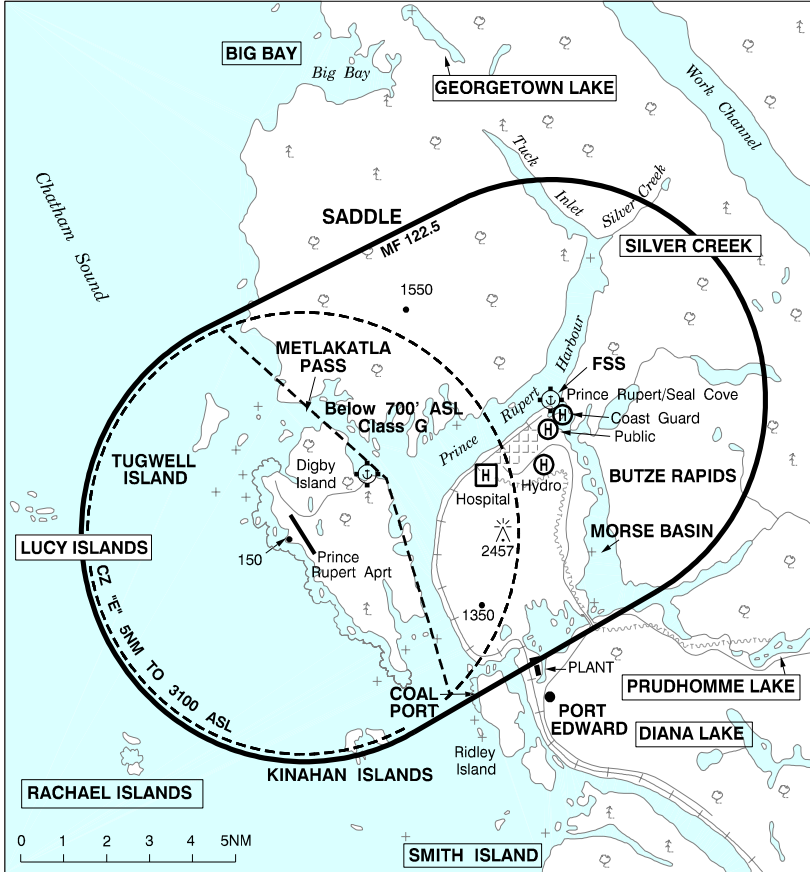
<b>REF</b>	N53 52 38 W122 45 40 21°E UTC-8(7) Elev 1940' A5014	
<b>OPR</b>	Pacific Western Helicopters 250-562-7911 Reg PNR	
<b>PF</b>	B-1,3 C-2,4,5,6	
<b>FLT PLN</b>	NOTAM FILE CYXS <b>FIC</b> Kamloops 866-WXBRIEF (Toll free within Canada) or 866-541-4101 (Toll free within Canada & USA)	
<b>SERVICES</b>		
<b>FUEL</b>	JA-1, JB	
<b>PAD DATA</b>	65' x 71' concrete 120' x 120'	
<b>RCR</b>	Opr	
<b>COMM</b>		
<b>TWR</b>	Prince George 118.3 14-07Z‡	
<b>MF</b>	Williams Lake rdo 118.3 (RAAS) 07-14Z‡ 5NM 5500 ASL centred on Prince George land A/D (CAR 602.98)	
<b>PRO</b>	Arr/dep btwn 032°-122° fr heli	

# CANADA FLIGHT SUPPLEMENT / GPH 205

Effective 0901Z 20 November 2008 to 0901Z 15 January 2009

B722 AERODROME/FACILITY DIRECTORY

## PRINCE RUPERT VFR TERMINAL PROCEDURES CHART



# CANADA FLIGHT SUPPLEMENT / GPH 205

Effective 0901Z 20 November 2008 to 0901Z 15 January 2009

AERODROME/FACILITY DIRECTORY B723

## PRINCE RUPERT BC

CYPR

<b>REF</b>	N54 17 10 W130 26 41 5WSW 22°E UTC-8(7) Elev 116' A5013 E-15 LO1 HI2 HI3 CAP	
<b>OPR</b>	Prince Rupert Aprt Authority 250-624-6274 Cert	
<b>PF</b>	A-1,3 B-2 C-2,4,5,6 Sked ferry svc to city 1530-04Z†, sked subject to change without ntc	
<b>CUST</b>	AOE/15 888-226-7277	
<b>FLT PLN</b>	NOTAM FILE CYPR	
<b>FIC</b>	Kamloops 866-WXBRIEF (Toll free within Canada) or 866-541-4101 (Toll free within Canada & USA)	
<b>WX</b>	Legacy AWOS WxCam TAF H24, issue times: 01, 07, 13, 19Z.	
<b>PIK</b>	Main tml bldg lounge, airside access H24	
<b>SERVICES</b>		
<b>FUEL</b>	100LL, JA-1 16-04Z†, O/T call out chg plus cost of water taxi. Hrs subject to change, ctc supplier for current sked 250-627-1801 or Page 250-624-0838.	
<b>RWY DATA</b>	Rwy 13(130°)/31(310°) 6000x200 asphalt Rwy 13 up 0.4% (last 2700' up 0.6%) FSS; win maint 1545-0345Z. O/T 3 hrs PNR cost recovery. Twy B no win maint. CRFI, PLR/PCN.	
<b>RCR</b>		
<b>LIGHTING</b>	13-AN (TE HI), 31-AO (TE HI) P2, O/R FSS 14-06Z† O/T ARCAL-122.5 type K	
<b>COMM</b>		
<b>RADIO</b>	Rupert rdo 122.5 (V) 14-06Z† (emerg only 250-627-5384)	
<b>RCO</b>	Terrace rdo 122.5 (RAAS) 06-14Z† Pacific rdo 123.275 (FISE) 126.7 (bcst)	
<b>MF</b>	rdo 122.5 14-06Z† O/T Terrace rdo 122.5 irregular shape see Prince Rupert VTPC 3100 ASL (CAR 602.98)	
<b>PAL</b>	Vancouver Ctr 133.675 284.0	
<b>VDF</b>	122.5 14-06Z†	
<b>NAV</b>		
<b>VOT</b>	115.7 Unmonitored when FSS clsd.	
<b>NDB</b>	PR 218 (M) N54 15 48 W130 25 26 310° 1.6NM to A/D Unmonitored when FSS clsd.	
<b>DME</b>	IPR 109.7 Ch 34 N54 17 26 W130 27 02 (91') at A/D	
<b>ILS</b>	IPR 109.7 (Rwy 13/31)	
<b>PRO</b>	Rgt hand circuits rwy 13 (CAR 602.96). See VTPC.	
<b>CAUTION</b>	High gnd to 295 ASL adj to eastern edge of rwy 1200' fr centreline. Trees to 100 ASL 300' W of rwy centreline.	

# CANADA FLIGHT SUPPLEMENT / GPH 205

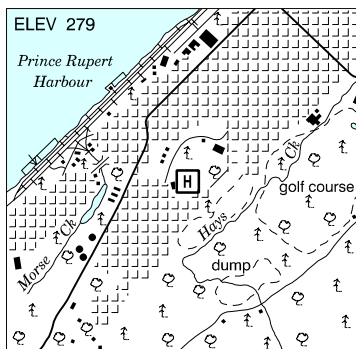
Effective 0901Z 20 November 2008 to 0901Z 15 January 2009

## B724 AERODROME/FACILITY DIRECTORY

### PRINCE RUPERT (HOSP) BC (Heli)

CBR8

<b>REF</b>	N54 18 17 W130 19 48 Adj 22°E UTC-8(7) Elev 279' A5013
<b>OPR</b>	North Coast Community Health Council 250-624-2171 Ext 272 Cert PPR
<b>PF</b>	B-1,2,4, C-3,5,6
<b>FLT PLN</b>	NOTAM FILE CYPR
<b>FIC</b>	Kamloops 866-WXBRIEF (Toll free within Canada) or 866-541-4101 (Toll free within Canada & USA)
<b>SERVICES</b>	<b>S</b> 4,6
<b>PAD DATA</b>	33' dia concrete 377' dia
<b>LIGHTING</b>	ME PNR to opr ask for Emerg ext

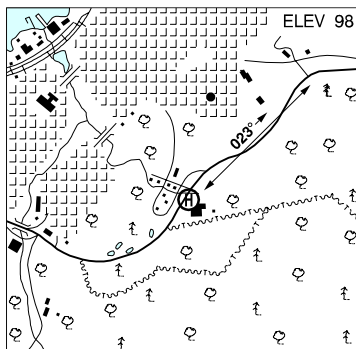


<b>COMM</b>	
<b>RADIO</b>	Rupert rdo 122.5 (V) 14-06Z± (emerg only 250-627-5384)
<b>RCO</b>	Terrace rdo (Prince Rupert) 122.5 (RAAS) 06-14Z± Pacific rdo 123.275 (FISE) 126.7 (bcst)
<b>MF</b>	rdo 122.5 14-06Z± O/T Terrace rdo 122.5 irregular shape see Prince Rupert VTPC 3100 ASL (CAR 602.98)
<b>VDF</b>	122.5 14-06Z± at Prince Rupert land A/D
<b>CAUTION</b>	Only pilots familiar with lcl terrain should use the aprt dur hrs of darkness.

### PRINCE RUPERT (HYDRO) BC (Heli)

CBU4

<b>REF</b>	N54 18 42 W130 17 37 Adj 22°E UTC-8(7) Elev 98' A5013
<b>OPR</b>	British Columbia Hydro 888-769-3766 Reg PPR
<b>PF</b>	B-1 C-2,3,4,5,6
<b>FLT PLN</b>	NOTAM FILE CYPR
<b>FIC</b>	Kamloops 866-WXBRIEF (Toll free within Canada) or 866-541-4101 (Toll free within Canada & USA)
<b>PAD DATA</b>	86' x 86' 114' x 114' gravel/wood
<b>RCR</b>	250-624-0621 Mon-Fri 16-24Z±
<b>COMM</b>	
<b>RADIO</b>	Rupert rdo 122.5 (V) 14-06Z± (emerg only 250-627-5384)
<b>RCO</b>	Terrace rdo (Prince Rupert) 122.5 (RAAS) 06-14Z± Pacific rdo 123.275 (FISE) 126.7 (bcst)
<b>MF</b>	rdo 122.5 14-06Z± O/T Terrace rdo 122.5 irregular shape see Prince Rupert VTPC 3100 ASL (CAR 602.98)
<b>VDF</b>	122.5 14-06Z± at Prince Rupert land A/D
<b>PRO</b>	Single arr/dep flt path brg 023° fr heli.



# CANADA FLIGHT SUPPLEMENT / GPH 205

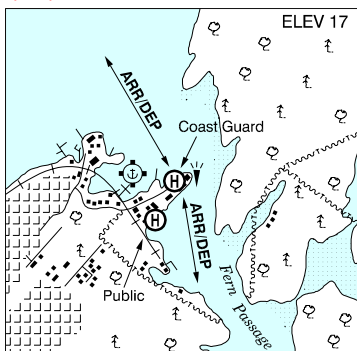
Effective 0901Z 20 November 2008 to 0901Z 15 January 2009

AERODROME/FACILITY DIRECTORY B725

## PRINCE RUPERT / SEAL COVE (COAST GUARD) BC (Heli)

CBY6

<b>REF</b>	N54 19 54 W130 16 36 Adj NE 22°E UTC-8(7) Elev 17' A5013
<b>OPR</b>	Coast Guard 250-624-2086 Reg PPR
<b>PF</b>	B-1 C-2,3,4,5,6
<b>FLT PLN</b>	NOTAM FILE CYPR Kamloops 866-WXBRIEF (Toll free within Canada) or 866-541-4101 (Toll free within Canada & USA)
<b>PAD DATA</b>	110' x 110' concrete
<b>RCR</b>	Opr
<b>LIGHTING</b>	RY(ME) PNR

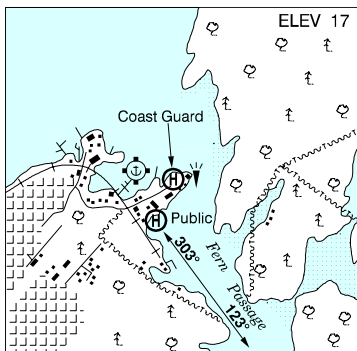


<b>COMM</b>	Rupert rdo 122.5 (V) 14-06Z± (emerg only 250-627-5384) Terrace rdo (Prince Rupert) 122.5 (RAAS) 06-14Z± Pacific rdo 123.275 (FISE) 126.7 (bcst) MF rdo 122.5 14-06Z± O/T Terrace rdo 122.5 irregular shape see Prince Rupert VTFC 3100 ASL (CAR 602.98) VDF 122.5 14-06Z± at Prince Rupert land A/D
<b>PRO</b>	Arr/dep over water.
<b>CAUTION</b>	Extv seaplane tfc adj to heli.

## PRINCE RUPERT / SEAL COVE (PUBLIC) BC (Heli)

CBF6

<b>REF</b>	N54 19 48 W130 16 42 Adj NE 22°E UTC-8(7) Elev 17' A5013
<b>OPR</b>	Seal Cove Airport Society 250-624-2321 Cert
<b>PF</b>	A-1,3 C-2,4,5,6
<b>FLT PLN</b>	NOTAM FILE CYPR Kamloops 866-WXBRIEF (Toll free within Canada) or 866-541-4101 (Toll free within Canada & USA)
<b>SERVICES</b>	100LL, JA-1
<b>FUEL</b>	All
<b>OIL</b>	
<b>PAD DATA</b>	2 apron touchdown pads each 60' dia concrete
<b>RCR</b>	Opr



<b>COMM</b>	Rupert rdo 122.5 (V) 14-06Z± (emerg only 250-627-5384) Terrace rdo (Prince Rupert) 122.5 (RAAS) 06-14Z± Pacific rdo 123.275 (FISE) 126.7 (bcst) MF rdo 122.5 14-06Z± O/T Terrace rdo 122.5 irregular shape see Prince Rupert VTFC 3100 ASL (CAR 602.98) VDF 122.5 14-06Z± at Prince Rupert land A/D
<b>CAUTION</b>	Ext seaplane tfc adj to heli.

# CANADA FLIGHT SUPPLEMENT / GPH 205

Effective 0901Z 20 November 2008 to 0901Z 15 January 2009

## B726 AERODROME/FACILITY DIRECTORY

### PRINCETON BC

CYDC

<b>REF</b>	N49 28 05 W120 30 41 Adj N 18°E UTC-8(7) Elev 2298' A5004 E-15 LO2 HI3 CAP	
<b>OPR</b>	Town 250-295-4979 Reg	
<b>PF</b>	B-1 C-2,4,5	
<b>FLT PLN</b>	NOTAM FILE CYDC <b>FIC</b> Kamloops 866-WXBRIEF (Toll free within Canada) or 866-541-4101 (Toll free within Canada & USA) <b>WX</b> METAR 15-01Z (DT 13-01Z). Tml Advsy fcst incl in VFR rte fcst (dur DT only), issue times: 14, 17, 20, 23Z.	
<b>SERVICES</b>	<b>S</b> 5	
<b>RWY DATA</b>	Rwy 03/21 3934x75 asphalt	
<b>RCR</b>	Opr Ltd win maint. PLR/PCN	
<b>COMM</b>	<b>RCO</b> Pacific rdo 126.7 (FISE) <b>ATF</b> tfc 123.2 5NM 5300 ASL <b>PAL</b> Vancouver Ctr 135.0 351.3	
<b>NAV</b>	<b>NDB</b> DC 326 (M) N49 28 10 W120 31 00 at A/D <b>VORTAC</b> YDC 113.9 Ch 86 N49 22 54 W120 22 26 (5329') 293° 7.5NM to A/D	
<b>PRO</b>	Rgt hand circuits rwy 03.	
<b>CAUTION</b>	5' ditch 300' W thld 03	

### PROVOST AB

CEH6

<b>REF</b>	N52 20 17 W110 16 44 1S 15°E UTC-7(6) Elev 2197' A5015 E-16 LO2 CAP	
<b>OPR</b>	Municipal District of Provost 780-753-2434 Reg	
<b>PF</b>	B-1 D-2,3,4,5,6	
<b>FLT PLN</b>	NOTAM FILE CYLL <b>FIC</b> Edmonton 866-WXBRIEF (Toll free within Canada) or 866-541-4102 (Toll free within Canada & USA) <b>ACC</b> Edmonton IFR 888-358-7526 or 780-890-8304/8305	
<b>SERVICES</b>	<b>FUEL</b> 100LL <b>S</b> 4,5,6	
<b>RWY DATA</b>	Rwy 12(119°)/30(299°) 5001x75 asphalt Thld 12 displ 874'. Thld 30 displ 384'.	
<b>RCR</b>	Opr 1530-2330Z± O/T 780-753-2168/2434 Ltd maint	
<b>LIGHTING</b>	12-(TE ME), 30-(TE ME) ARCAL-122.8 type K	
<b>COMM</b>	<b>ATF</b> UNICOM ltd hrs O/T tfc 122.8 5NM 5200 ASL	



# CANADA FLIGHT SUPPLEMENT / GPH 205

Effective 0901Z 20 November 2008 to 0901Z 15 January 2009

AERODROME/FACILITY DIRECTORY B727

## PUKATAWAGAN MB

CZFG

<b>REF</b>	N55 44 57 W101 15 59 2.5E 8°E UTC-6(5) Elev 960' A5016 E-16 E-17 LO1 LO3 CAP	
<b>OPR</b>	Govt of Manitoba 204-677-6722 Cert	
<b>PF</b>	A-1 C-1,5 Tml bldg opr 13-18Z‡, 19-2115Z‡ Mon-Fri, clsd Sat, Sun & hols	
<b>FLT PLN</b>	NOTAM FILE CYQD	
<b>FIC</b>	Winnipeg 866-WXBRIEF (Toll free within Canada) or 866-541-4103 (Toll free within Canada & USA)	
<b>RWY DATA</b>	Rwy 15(154°)/33(334°) 3000x85 crushed rock	
<b>RCR</b>	APM 204-553-2398 13-18Z‡, 19-2115Z‡ Mon-Fri exc hols O/T 204-553-2346 Rwy soft when wet.	
<b>LIGHTING</b>	15-(TE LO) P1, 33-(TE LO) P1 ARCAL-122.8 type J (see CAUTION)	
<b>COMM</b>		
<b>ATF</b>	UNICOM ltd hrs O/T tfc 122.8 5NM 4000 ASL	
<b>NAV</b>		
<b>NDB</b>	R5 367 (M) N55 44 57 W101 15 41 at A/D Pvt	
<b>CAUTION</b>	Rwy edge lgt installed higher than std (aprx 27 inches high loc 5' outside rwy edge).	

## PUNTZI MOUNTAIN BC

CYPU

<b>REF</b>	N52 06 46 W124 08 41 17W 20°E UTC-8(7) Elev 2985' A5004 A5014 E-15 LO2	
<b>OPR</b>	Ministry of Forests 250-989-2600 Reg	
<b>FLT PLN</b>	NOTAM FILE CYWL	
<b>FIC</b>	Kamloops 866-WXBRIEF (Toll free within Canada) or 866-541-4101 (Toll free within Canada & USA)	
<b>RWY DATA</b>	Rwy 05/23 6012x250 asphalt	
<b>APRON</b>	Rstd to airtanker acft dur fire fighting ops.	
<b>RCR</b>	Opr No win maint	
<b>COMM</b>		
<b>DRCO</b>	Pacific rdo 126.7 (FISE)	
<b>ATF</b>	tfc 126.7 5NM 6000 ASL	
<b>PAL</b>	Vancouver Ctr 135.05 315.7	

# CANADA FLIGHT SUPPLEMENT / GPH 205

Effective 0901Z 20 November 2008 to 0901Z 15 January 2009

B728 AERODROME/FACILITY DIRECTORY

## PUVIRNITUQ QC

CYPX

<b>REF</b>	N60 03 02 W77 17 13 1N 23°W UTC-5(4) Elev 74' A5026 A5032 A5033 D-14 D-15 LO5 HI1 HI2 CAP	
<b>OPR</b>	Administration Régionale Kativik 819-964-2968 14-22Z‡ Mon-Fri O/T 819-964-3434 Ext 154 Fax 819-964-2462 Cert	
<b>PF</b>	Ctc Opr	
<b>FLT PLN</b> <b>ACC CARS</b> <b>WX</b>	(bil) NOTAM FILE CYGW Québec 866-GOMÉTÉO or 866-WXBRIEF (Toll free within Canada) or 866-541-4105 (Toll free within Canada & USA) Montréal 800-633-1353 819-988-2153 ltd hrs (see COMM) METAR dur CARS hrs. TAF 15-22Z‡, issue time: 15Z‡.	
<b>SERVICES</b> <b>FUEL</b>	100LL(D) ltd, JA-1 PNR FCNQ Petro 819-988-2525 13-22Z‡ Mon-Fri O/T COOP 819-988-2972 svc chg. Visa and Master Card accepted. Credit by prior arng only, ctc 800-363-7610, allow 7 working days.	
<b>RWY DATA</b> <b>RCR</b>	Rwy 01(011°)/19(191°) 5014x100 gravel Rwy 19 down 0.4% first 2630', down 0.9% next 980' Opr	
<b>LIGHTING</b>	01-AS (TE ME), 19-AS (TE ME) P2 ARCAL-122.1 type J	
<b>COMM</b> <b>RCO</b> <b>MF/ATF</b> <b>APRT RDO</b>	(bil) Québec rdo 123.275 (FISE) 126.7 (bcst) aprt rdo (English only) ltd hrs O/T tfc 122.1 5NM 3100 ASL (CAR 602.98) 122.1 (V) 1230-2230Z‡	
<b>NAV</b> <b>NDB</b> <b>DME</b>	YPX 338 (M) N60 02 38 W77 16 46 293° 0.2NM to A/D Unmonitored when CARS clsd YPX 113.5 Ch 82 N60 02 37 W77 16 46 (88') 0.2NM to A/D Unmonitored when CARS clsd	
<b>CAUTION</b>	Possibility of caribou on rwy May-Nov.	

# CANADA FLIGHT SUPPLEMENT / GPH 205

Effective 0901Z 20 November 2008 to 0901Z 15 January 2009

AERODROME/FACILITY DIRECTORY B729

## QIKIQTARJUAQ NU

CYVM

<b>REF</b>	N67 32 45 W64 01 53 40°W GV24°E UTC-5(4) Elev 21' A5039 C-12 LO9 HI1 CAP	
<b>OPR</b>	Govt of Nunavut, Iqaluit 867-897-3606 Cert	
<b>PF</b>	A-1 CARS ops hrs O/T PNR C-2,4,5	
<b>FLT PLN</b> <b>FIC</b> <b>CARS</b> <b>WX</b>	NOTAM FILE CYVM North Bay 866-WXBRIEF (Toll free within Canada) or 866-541-4109 (Toll free within Canada & USA) 867-927-8792 ltd hrs (see COMM) METAR dur CARS hrs O/T Legacy AWOS (see COMM) TAF H24, issue times: 01, 07, 13, 19Z	
<b>SERVICES</b> <b>FUEL</b>	JA-1 867-927-8002 or 979-2449 1430-24Z Mon-Fri exc hols O/T call out chg PNR 867-927-8002 or 979-2449. Credit card not accepted. Credit by prior arrng 867-645-5165/5187, allow 7 working days.	
<b>RWY DATA</b> <b>RCR</b>	Rwy 03T(033°T)/21T(213°T) 3800x100 gravel CARS ltd hrs O/T Council 867-927-8832 14-22Z† Mon-Fri 2 hr PNR	
<b>LIGHTING</b>	03T-AS(TE ME) AP, 21T-AS(TE ME) AP ARCAL-122.1 type K Rising terrain penetrates APAPI approach slope aprx 1.5NM from thlds rwy 03T & rwy 21T.	
<b>COMM</b> <b>MF</b> <b>APRT RDO</b>  <b>Legacy</b> <b>AWOS</b>	aprt rdo ltd hrs O/T tfc 122.1 5NM 3000 ASL (CAR 602.98) Broughton 122.1 (V) 11-21Z† Mon & Wed; 13-23Z† Tue; 14-23Z† Thu; 13-22Z† Fri & Sat; 11-18Z† Sun  122.550	
<b>NAV</b> <b>NDB</b>	BROUGHTON YJI 237 (M) N67 33 43 W64 01 03 193°T 0.7NM to thld rwy 21T Unmonitored when CARS clsd.	
<b>CAUTION</b>	NW edge of Northern apron bordered by water. Rwy edge lgt installed higher than std (aprx 27 inches high loc 5' outside rwy edge). High ground penetrates take-off & approach slopes aprx 1.5NM from each end of rwy.	

## QUALICUM BEACH BC

CAT4

<b>REF</b>	N49 20 14 W124 23 38 1.8S 19°E UTC-8(7) Elev 191' A5004 E-15 LO2 HI3 CAP	
<b>OPR</b>	Town 250-752-6921 Cert	
<b>PF</b>	A-1,2 C-3,4,5,6	
<b>FLT PLN</b> <b>FIC</b>  <b>ACC</b>	NOTAM FILE CYCD Kamloops 866-WXBRIEF (Toll free within Canada) or 866-541-4101 (Toll free within Canada & USA) For IFR clnc ctc Comox Terminal 250-339-8115 before take off.	
<b>SERVICES</b> <b>FUEL</b> <b>S</b>	daylight hrs 100LL, JA 2	

# CANADA FLIGHT SUPPLEMENT / GPH 205

Effective 0901Z 20 November 2008 to 0901Z 15 January 2009

B730 AERODROME/FACILITY DIRECTORY

## QUALICUM BEACH BC (Cont'd)

CAT4

<b>RWY DATA</b>	Rwy 11(109°)/29(289°) 3565x75 asphalt Thld 11 displ 500' Thld 29 displ 226'. Rwy 29 up 0.77%
<b>RCR</b>	Opr Ltd win maint
<b>LIGHTING</b>	11-(TE ME) AP 4°, 29-(TE ME) AP 4° ARCAL-122.8 type K
<b>COMM</b>	
<b>MF TML</b>	tfc 122.8 5NM 3200 ASL (CAR 602.98) Comox 123.7 227.6
<b>PRO</b>	Rgt hand circuits rwy 11 (CAR 602.98) For IFR clnc ctc Comox tml 250-339-8115 before tkof. NOISE ABATEMENT PROCEDURES: Do not overfly noise sensitive areas less than 1000 AGL, see sketch. Arr: offset apchs. Dep rwy 11, climb rwy heading to thld rwy 29, then climb hdg 142° when safe. Dep rwy 29, climb rwy hdg to railway tracks, then climb hdg 252° when safe. Night restrictions (btwn 06-14Z±): Medevac only, or PPR. Night circuit height 1400 MSL. Night ops prohibited when APAPI u/s.
<b>CAUTION</b>	100' trees aprx 3000' fr thld 29. Only pilots familiar with lcl terrain should use this A/D dur hrs of darkness.

## QUAMICHAN LAKE (RAVEN FIELD) BC

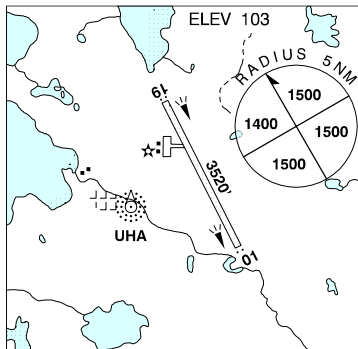
CML2

<b>REF</b>	N48 48 43 W123 39 02 2.7NNE 19°E UTC-8(7) Elev 130' VTA A5004 E-15
<b>OPR</b>	John Howroyd 250-477-9116 Reg PPR
<b>PF</b>	B-1 C-2,3,4,5,6
<b>FLT PLN</b>	NOTAM FILE WYCD
<b>FIC</b>	Kamloops 866-WXBRIEF (Toll free within Canada) or 866-541-4101 (Toll free within Canada & USA)
<b>RWY DATA</b>	Rwy 16/34 1800x75 grass Rwy 34 up 5.5% Soft in winter
<b>RCR</b>	Opr 15-04Z± No win maint.
<b>PRO</b>	Land rwy 34, depart rwy 16, remain over lake until 1500 ASL. Do not descend below 1500 ASL until over lake, fly downwind minimum of 1/2 mile W of rwy.
<b>CAUTION</b>	Seaplane activity on lake.

## QUAQTAQ QC

CYHA

<b>REF</b>	N61 02 47 W69 37 04 30°W UTC-5(4) Elev 103' A5033 D-15 LO5 HI1 CAP
<b>OPR</b>	Administration Régionale Kativik 819-964-2968 14-22Z± Mon-Fri O/T 819-964-3434 Ext 154 Fax 819-964-2462 Cert
<b>PF</b>	A-1 C-2,4,5
<b>FLT PLN</b>	NOTAM FILE CYVP
<b>FIC</b>	(bil) Québec 866-GOMÉTÉO or 866-WXBRIEF (Toll free within Canada) or 866-541-4105 (Toll free within Canada & USA)
<b>ACC CARS</b>	Montréal 800-633-1353
<b>WX</b>	819-492-9079 ltd hrs (see COMM) METAR dur CARS hrs. TAF 15-22Z±, issue time: 15Z±.



## SERVICES

**FUEL**

Jet A-1, prior arng 819-492-9353. VISA credit card only. Other credit ctc 819-492-9353, allow 7 working days.