

CANADA FLIGHT SUPPLEMENT / GPH 205

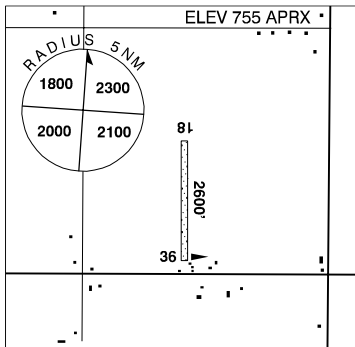
Effective 0901Z 20 November 2008 to 0901Z 15 January 2009

AERODROME/FACILITY DIRECTORY B641

OAK HAMMOCK AIR PARK MB

CAV9

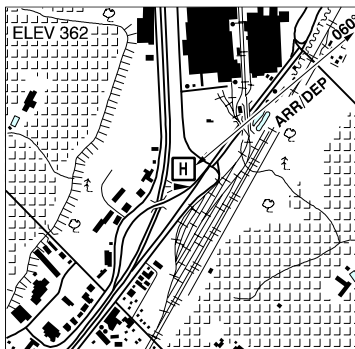
REF	N50 08 16 W97 03 41 4°E UTC-6(5) Elev 755' aprx VTA A5007 E-16 E-17
OPR	Mr. John Halkowich 204-482-9120 Reg
PF	B-1,3
FLT PLN	NOTAM FILE CYDN
FIC	Winnipeg 866-WXBRIEF (Toll free within Canada) or 866-541-4103 (Toll free within Canada & USA) (file 30 min prior ETD, see PRO)
ACC	IFR, 204-983-8337 or 888-834-3344 or flt pln by Fax at 204-983-2823 & include phone number where pilot can be reached prior to dep.
SERVICES	
FUEL	100LL
OIL	20W50
S	1,2,4,5,6
RWY DATA	Rwy 18(176°)/36(356°) 2600x70 grass
RCR	Opr Ltd win maint
COMM	
ATF	tfc 122.8 3NM 1800 ASL excluding that area within St. Andrews CZ. Aprt in close proximity to St. Andrews CZ see Winnipeg VTA. For flt info ctc St. Andrews TWR 118.5 avbl ltd hr & ATC workload permitting.
NAV	
NDB	ST. ANDREWS AV 275 (L) N50 03 11 W97 02 42 349° 5.1NM to A/D
PRO	Dep rwy 18, turn when safely able to avoid St. Andrews CZ. ATS REQUIREMENTS: VFR & IFR Flight Plans, file at least 30 min prior to ETD. All non-flight planned acft intending flt within Winnipeg Class D airspace (Winnipeg CZ & tml) refer to ATS REQUIREMENTS under Winnipeg/James Armstrong Richardson Intl, CYWG, PRO.
CAUTION	P-lines & trees apch to rwy 36. St. Andrews CZ 1NM S.



OAKVILLE (TRAFALGAR MEM HOSP) ON (Heli)

CPE8

REF	N43 28 27 W79 40 18 Adj 10°W UTC-5(4) Elev 362' VTA A5000
OPR	Oakville Trafalgar Mem Hosp 905-845-2571 Cert PPR
FLT PLN	NOTAM FILE CYBM
FIC	London 866-WXBRIEF (Toll free within Canada) or 866-541-4104 (Toll free within Canada & USA)
PAD DATA	82' x 82' asphalt 114' x 114' Rstd max heli length 57.5'
RCR	Opr
LIGHTING	RY(LO) RF(FH)
COMM	
TWR	Toronto 118.35 118.7
A/G	Ambulance dispatch 129.275



CANADA FLIGHT SUPPLEMENT / GPH 205

Effective 0901Z 20 November 2008 to 0901Z 15 January 2009

B642 AERODROME/FACILITY DIRECTORY

OAKVILLE (TRAFALGAR MEM HOSP) ON (Heli) (Cont'd)

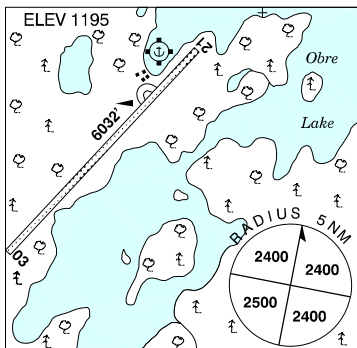
CP E8

PRO	Arr/dep 060° fr heli. PNR for all except medical flts, ctc Ford Security 905-845-2511 Ext 3550. Rstd to Category "A" performance helicopters or equivalent Transport Canada Operational Specification approved Procedure.
CAUTION	Unmarked P-lines & poles E, SE, & S of heli. Lgtd chimney aprx 1NE of heli 698 ASL (358 AGL).

OBRE LAKE / NORTH OF SIXTY NT

CKV4

REF	N60 18 56 W103 07 54 Adj E 11°E UTC-6(5) Elev 1195' A5024 A5031 D-13 RCAP
OPR	North of 60 Fishing Camps 763-745-7888 Reg PPR
PF	B-1,2,5 PNR Oprg Jul 1-Sep 30
FLT PLN	NOTAM FILE CYSM
FIC	North Bay 866-WXBRIEF (Toll free within Canada) or 866-541-4109 (Toll free within Canada & USA)
ACC	Edmonton IFR 888-358-7526 or 780-890-8304/8305
SERVICES	
FUEL	100LL, JA-1, MG-1, (Floatbase 100LL only), PNR
OIL	100
RWY DATA	Rwy 03(034°)/21(214°) 6032x100 clay/gravel/sand. Rwy 03 up 0.5%.
RCR	Opr No win maint
COMM	
ATF	UNICOM (AU) ltd hrs O/T tfc 122.8 5NM 4200 ASL



OGILVIE YT

CFS4

REF	N65 40 W138 07 28°E UTC-8(7) Elev 1640' A5034 C-9
OPR	Govt of Yukon 867-634-2450 Reg
FLT PLN	NOTAM FILE CYXY
FIC	Whitehorse 866-WXBRIEF (Toll free within Canada) or 866-541-4107 (Toll free within Canada & USA)
RWY DATA	Rwy 01(012°)/19(192°) 2500x50 gravel
RCR	Opr No maint
COMM	
ATF	tfc 123.2 5NM 4700 ASL
CAUTION	Rwy sfc contains large, loose stones; recommend use only by acft equipped with large, balloon-type tires.

OGILVIE RIVER YT — See OGILVIE

CANADA FLIGHT SUPPLEMENT / GPH 205

Effective 0901Z 20 November 2008 to 0901Z 15 January 2009

AERODROME/FACILITY DIRECTORY B643

OGOKI POST ON

CNT3

REF	N51 39 31 W85 54 06 2NE 8°W UTC-5(4) Elev 594' A5008 E-17 E-18 LO3		ELEV 594
OPR	Govt of Ontario 807-473-2082 Cert		
PF	C-1		
FLT PLN	NOTAM FILE CYGQ London 866-WXBRIEF (Toll free within Canada) or 866-541-4104 (Toll free within Canada & USA)		
RWY DATA	Rwy 09(086°)/27(266°) 3511x100 gravel APM 807-349-2542 13-22Z± Mon-Fri exc hols Subject to seasonal & climatic variations.		
LIGHTING	09-(TE LO) AP, 27-(TE LO) AP ARCAL-123.2 type K for APAPI, rwy lgts low ints only.		
COMM	ATF tfc 123.2 5NM 3600 ASL PAL Winnipeg Ctr 135.475 To open/close IFR flt plns		
NAV	NDB YOG 300 (M) N51 39 38 W85 54 07 at A/D Unmonitored		
CAUTION	Due to rwy slope acft at rwy ends may not be vis to pilots opposite ends of rwy.		

OIE LAKE / DOUGALL CAMPBELL FIELD BC

CDC5

REF	N52 00 39 W121 12 40 20°E UTC-8(7) Elev 3060' A5004 A5014		ELEV 3060
OPR	D. Stead 604-945-9565 Reg PPR		
PF	C-1 D-2		
FLT PLN	NOTAM FILE CYWL Kamloops 866-WXBRIEF (Toll free within Canada) or 866-541-4101 (Toll free within Canada & USA)		
RWY DATA	Rwy 10 (099°)/Rwy 28 (279°) 3000x75 gravel Rwy 28 up 2% first 2500'. Rwy 10 down 3.8% first 500'.		
COMM	ATF tfc 123.2 5 NM 6100 ASL		
CAUTION	Trees 50' AGL at thld rwy 10. Wildlife in vic of rwy.		

OKOTOKS AIR PARK AB — See CALGARY / OKOTOKS AIR PARK

OKOTOKS (ROWLAND FIELD) AB — See CALGARY / OKOTOKS (ROWLAND FIELD)

CANADA FLIGHT SUPPLEMENT / GPH 205

Effective 0901Z 20 November 2008 to 0901Z 15 January 2009

B644 AERODROME/FACILITY DIRECTORY

OLD CROW YT

CYOC

REF	N67 34 14 W139 50 21 Adj 29°E UTC-8(7) Elev 824' A5034 C-9 LO5 HI2 CAP	
OPR	Govt of Yukon 867-634-2450 or 867-966-3511/3165 Cert	
PF	A-1 C-2,4,5	
CUST	AOE/15 888-226-7277 17-05Z‡ dly	
FLT PLN	NOTAM FILE CYOC	
FIC	Whitehorse 866-WXBRIEF (Toll free within Canada) or 866-541-4107 (Toll free within Canada & USA)	
ACC	Edmonton IFR 888-358-7526 or 780-890-8304/8305 867-966-3511 Ltd hrs (see COMM)	
CARS	METAR dur CARS hrs op (see COMM)	
WX	TAF 16-02Z‡, issue times: 16, 18, 24Z (DT 15, 18Z).	
SERVICES	Call out chg may be levied for one or more svcs. FUEL 100LL JA 16-23Z (DT 15-24Z) Mon-Fri after hrs PNR 867-966-4607 S 4,5,6	
RWY DATA	Rwy 03(033°)/21(213°) 4900x100 gravel Thld 03 displ 300'. Thld 21 displ 200'. RCR CARS, dur CARS hrs ops (see COMM), ltd maint.	
LIGHTING	03-(TE LO) P2, 21-(TE LO) P2 ARCAL-122.1 type J	
COMM	MF aprt rdo ltd hrs O/T ftc 122.1 5NM 3900 ASL (CAR 602.98) APRT RDO 122.1 (V) 14-02Z‡	
NAV	NDB YOC 284 (M) N67 34 16 W139 50 47 at A/D	

OLDS-DIDSBURY AB

CEA3

REF	N51 42 41 W114 06 22 4.3S 17°E UTC-7(6) Elev 3360' VTA A5005 E-15 E-16 LO2	
OPR	Olds-Didsbury Aprt 403-335-3311 Reg	
PF	A-1 C-2,3,4,5,6	
FLT PLN	NOTAM FILE CYBW	
FIC	Edmonton 866-WXBRIEF (Toll free within Canada) or 866-541-4102 (Toll free within Canada & USA)	
ACC	Edmonton IFR 888-358-7526 or 780-890-8304/8305	
SERVICES	FUEL 100LL OIL 65, 80 S 1,2,3,4,5,6,	
RWY DATA	Rwy 10(101°)/28(281°) 3664x75 asphalt Rwy 04/22 2023x50 turf RCR Opr Ltd maint. Rwy 04/22 ltd win maint.	
LIGHTING	10-(TE ME), 28-(TE ME) ARCAL-123.2 type K	

CANADA FLIGHT SUPPLEMENT / GPH 205

Effective 0901Z 20 November 2008 to 0901Z 15 January 2009

AERODROME/FACILITY DIRECTORY B645

OLDS-DIDSBURY AB (Cont'd)

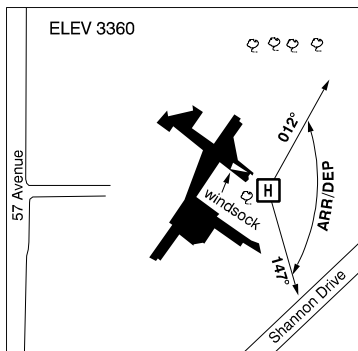
CEA3

COMM	ATIS	122.7 (Key mic 4 times)
	ATF	tfc 123.2 5NM 6400 ASL
NAV	NDB	K2 376 (L) N51 42 37 W114 06 31 at A/D Pvt Unmonitored

OLDS (HOSP) AB (Heli)

CFU9

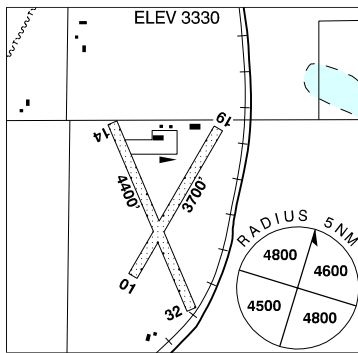
REF	N51 48 08 W114 07 01 Adj 17°E UTC-7(6) Elev 3360' A5005	
OPR	Olds Hosp & Care Ctr 403-556-3381 Cert PPR	
PF	C-1,2,3,4,5,6	
FLT PLN	NOTAM FILE CYQF	
FIC	Edmonton 866-WXBRIEF (Toll free within Canada) or 866-541-4102 (Toll free within Canada & USA)	
ACC	Edmonton IFR 888-358-7526 or 780-890-8304/8305	
PAD DATA	65' dia concrete/turf 85' dia	
LIGHTING	RY(LO) PNR	
COMM	ATF	tfc 123.2 5NM 6400 ASL
	PRO	Arr/dep btwn 012°-147° fr heli Slope 16% To be used by multi engine acft only.
CAUTION	Large trees 500' N of pad	



OLDS (NETOOK) AB

CFK6

REF	N51 51 W114 04 3.5N 17°E UTC-7(6) Elev 3330' A5005 E-15 E-16	
OPR	Air Cadet League of Canada 403-556-2874 Reg	
PF	D-1,2,3,4,5,6	
FLT PLN	NOTAM FILE CYQF	
FIC	Edmonton 866-WXBRIEF (Toll free within Canada) or 866-541-4102 (Toll free within Canada & USA)	
ACC	Edmonton IFR 888-358-7526 or 780-890-8304/8305	
RWY DATA	Rwy 14(140°)/32(320°) 4400x300 turf Rwy 01/19 3700x200 turf	
RCR	Opr No win maint	
COMM	ATF	UNICOM ltd hrs O/T tfc 123.3 5NM 6400 ASL
	CAUTION	Glider activity wknds Apr 1-Nov 15. Winch cable may extend to 2500 AGL, 5800 ASL.



CANADA FLIGHT SUPPLEMENT / GPH 205

Effective 0901Z 20 November 2008 to 0901Z 15 January 2009

B646 AERODROME/FACILITY DIRECTORY

OLIVER BC

CAU3

REF	N49 10 24 W119 33 04 Adj S 18°E UTC-8(7) Elev 1015' A5005 E-15 LO2	
OPR	Town 250-498-3404 Reg	
PF	A-1 B-2,5 C-3,4,6	
FLT PLN	NOTAM FILE CYYF Kamloops 866-WXBRIEF (Toll free within Canada) or 866-541-4101 (Toll free within Canada & USA)	
SERVICES		
FUEL	100LL, JA-1 PNR FBO 250-809-6508 VMR Aviation	
OIL	All	
S	2,4,5	
RWY DATA	Rwy 18/36 3200x50 asphalt Thld 36 displ 700'. Rwy 18 up 0.75% first 1600' 250-498-8387 17-01Z† Ltd win maint	
RCR		
LIGHTING	18-(TE LO), 36-(TE LO) AP 4° OCL to 3NM ARCAL-122.8 type J.	
COMM		
RCO	Pacific rdo 126.7 (FISE)	
ATF	UNICOM 122.8 2NM 2500 ASL	
PRO	Rgt hand circuits rwy 36 (CAR 602.96).	
CAUTION	Only pilots familiar with lcl terrain should use this A/D at ngt. A/D lctd in narrow mtn valley with unlgtd high terrain E & W of aprt.	

ONE HUNDRED MILE HOUSE BC

CAV3

REF	N51 38 33 W121 18 25 Adj SW 19°E UTC-8(7) Elev 3055' A5004 E-15 LO2	
OPR	One Hundred Mile House Flying Club 250-309-1344 Reg	
PF	C-1,2,3,4,5,6	
FLT PLN	NOTAM FILE CYWL Kamloops 866-WXBRIEF (Toll free within Canada) or 866-541-4101 (Toll free within Canada & USA)	
SERVICES		
FUEL	100LL	
RWY DATA	Rwy 08/26 1900x46 asphalt Rwy 08 up 2.5%	
RCR	Opr Ltd win maint	
COMM		
ATF	tfc 123.2 5NM 6100 ASL	
PRO	Recommend downhill tkof rwy 26 & uphill ldg rwy 08 when wind cond permit.	
CAUTION	Severe downdrafts may be encountered when taking off to the E. P-line 40' high adj E of A/D. Hill 3940 ASL 0.5 NM E.	

CANADA FLIGHT SUPPLEMENT / GPH 205

Effective 0901Z 20 November 2008 to 0901Z 15 January 2009

AERODROME/FACILITY DIRECTORY B647

108 MILE AIRPORT BC

CZML

REF	N51 44 10 W121 19 58 5.3NW 20°E UTC-8(7) Elev 3127' A5004 E-15 LO2 CAP	
OPR	Cariboo Regional District APM 250-791-1908 or Page 250-395-0046 Reg Ldg fees Jet & TurboProp only	
PF	A-1,3,6 C-2,4,5	
FLT PLN	NOTAM FILE CYWL FIC Kamloops 866-WXBRIEF (Toll free within Canada) or 866-541-4101 (Toll free within Canada & USA) WX LWIS (Pvt) 250-791-9262 (See COMM)	
SERVICES		
FUEL	100LL, JA, 250-791-1908 Mon-Sat 15-24Z±, O/T 250-395-0046	
OIL	All	
S	1,2,4,5,6	
RWY DATA	Rwy 14/32 4877x75 asphalt Rwy 14 down 1.07%	
RCR	APM 250-791-1908/250-395-1599 Win maint 24 hrs PNR Less than 24 hrs, call out chg will be levied.	
LIGHTING	14-(TE ME) V1, 32-(TE ME) V1 ARCAL-123.2 key mic 5 times for VASIS 32 and edge lgts, 7 times for VASIS 14 and edge lgts.	
COMM		
ATF	tfc 123.2 5NM 6100 ASL	
LWIS (Pvt)	122.55	
NAV		
NDB	J7 285 (M) N51 44 36 W121 20 13 at A/D Pvt	
DME	J7 116.2 Ch 109 N51 44 32 W121 20 16 (3164') at A/D Pvt	
PRO	Day: Rgt hand circuits rwy 32 (CAR 602.96). Night: Rgt hand circuits rwy 14 (CAR 602.96).	
CAUTION	South end of rwy is not vis fr thld 14. P-line aprx 200 E of rwy along southend marked by obst lgts. P-line across apch to rwy 32 marked by ball markers.	

OPAPIMISKAN LAKE ON

CKM8

REF	N52 36 31 W90 22 37 3°W UTC-5(4) Elev 1010' A5017 E17 LO3 RCAP	
OPR	Placer Dome Canada Ltd/Musselwhite Mine 807-928-2200 Fax 807-928-2067 Reg PPR	
FLT PLN	NOTAM FILE CYXL FIC Winnipeg 866-WXBRIEF (Toll free within Canada) or 866-541-4103 (Toll free within Canada & USA)	
RWY DATA	Rwy 12(120°)/30(300°) 4850x100 gravel	
RCR	Opr 807-928-2200 Ext 5009	
LIGHTING	12-(TE ME) AP, 30-(TE ME) AP ARCAL-122.8 type K	

CANADA FLIGHT SUPPLEMENT / GPH 205

Effective 0901Z 20 November 2008 to 0901Z 15 January 2009

B648 AERODROME/FACILITY DIRECTORY

OPAPIMISKAN LAKE ON (Cont'd)

CKM8

COMM	ATF UNICOM ltd hrs O/T tfc 122.8 5NM 4200 ASL
NAV	NDB 2M 393 (L) N52 36 11 W90 22 28 at A/D Pvt Unmonitored

OPINACA QC

CPN8

REF	N52 13 19 W76 36 45 17°W UTC-5(4) Elev 690' A5018 E-18 RCAP	
OPR	Les mines Opinaca Ltée 819-764-6400 Fax 819-764-6543 Reg PPR	
PF	B-1	
FLT PLN	FIC NOTAM FILE CYGL Québec 866-GOMÉTÉO or 866-WXBRIEF (Toll free within Canada) or 866-541-4105 (Toll free within Canada & USA)	
RWY DATA	Rwy 11(112°)/29(292°) 5100x150 gravel	
COMM	RCO Québec rdo (Nemiscau) 123.275 (FISE) 126.7 (bcst) ATF tfc 123.2 5NM 3700 ASL	

ORANGEVILLE / MURRAY WESLEY KOT FIELD ON

CPV2

REF	N43 57 31 W80 09 18 3NW 10°W UTC-5(4) Elev 1550' VTA A5000 F-21	
OPR	M. & K. Kot 519-941-9336 Reg PPR Ltd hrs	
PF	B-1 C-2,3,4,5,6	
FLT PLN	FIC NOTAM FILE CYBM London 866-WXBRIEF (Toll free within Canada) or 866-541-4104 (Toll free within Canada & USA)	
SERVICES	S 1,4,5	
RWY DATA	Rwy 09/27 1800x65 turf RCR Opr No win maint. Rwy soft when wet.	
COMM	ATF tfc 123.2 2NM 3600 ASL	
PRO	Rgt hand circuits rwy 09 (CAR 602.96).	
CAUTION	Trees aprx 30 AGL at thld 09. Concentration of geese at pond Spring, Summer & Fall. Ditches 3 feet deep immediately E of thld 27.	

CANADA FLIGHT SUPPLEMENT / GPH 205

Effective 0901Z 20 November 2008 to 0901Z 15 January 2009

AERODROME/FACILITY DIRECTORY B649

ORILLIA ON

CNJ4

REF	N44 41 W79 19 6.5NE 11°W UTC-5(4) Elev 725' A5000 F-21	
OPR	Orillia Avn Ltd 705-325-6153 Reg	
PF	B-1 C-2,3,4 D-3,5,6	
CUST	AOE/15/Seapl 888-226-7277 14-22Z‡ Mon-Fri exc hols	
FLT PLN	NOTAM FILE CYQA FIC London 866-WXBRIEF (Toll free within Canada) or 866-541-4104 (Toll free within Canada & USA)	
SERVICES		
FUEL	100LL	
OIL	All	
S	1,2,3,4,5	
RWY DATA	Rwy 12/30 2010x150 asphalt Rwy 04/22 1545x100 turf Rwy 04/22 clsd Oct 20-May 1 RCR Opr 13-22Z‡ Ltd win maint rwy 12/30. Rwy 04/22 may be soft when wet. TWY May be soft when wet.	
LIGHTING	12-(T LO) pvt, 30-(T LO) pvt PNR Opr	
COMM	ATF UNICOM ltd hrs O/T tfc 122.8 5NM 3700 ASL	
PRO	Rgt hand circuits rwys 04 & 12 (CAR 602.96). Water A/D circuits 1500 ASL (800 AGL) away fr land A/D.	
CAUTION	Twr painted & lgtd 1070 ASL (300 AGL) aprx 2NM E of A/D.	

ORILLIA ON — See BARRIE-ORILLIA (LAKE SIMCOE REGIONAL)

Sep 09

ORILLIA (ONTARIO PROVINCIAL POLICE) ON (Heli)

COP2

REF	N44 34 55 W79 25 46 Adj 11°W UTC-5(4) Elev 820' A5000	
OPR	Ontario Provincial Police Helicopter Operations 705-329-7525/6950 Cert PPR	
FLT PLN	NOTAM FILE CYQA FIC London 866-WXBRIEF (Toll free within Canada) or 866-541-4104 (Toll free within Canada & USA)	
PAD DATA	100' dia concrete, safety area 150' dia max heli length 66.6'	
LIGHTING	RW(LO) ARCAL-123.0 type J	
COMM	ATF tfc 122.8 5NM 3800 ASL	
PRO	Arr/dep btwn 290°-005° fr heli.	
CAUTION	Lgtd twr 900 ASL (100 AGL) 400' NNE. Lgtd chimney 900 ASL (100 AGL) 300' WSW. Lgtd twr 900 ASL (100 AGL) 600' N. Avoid flights over psychiatric hospital to southeast. Seagull concentration over landfill site 1NM NE.	

CANADA FLIGHT SUPPLEMENT / GPH 205

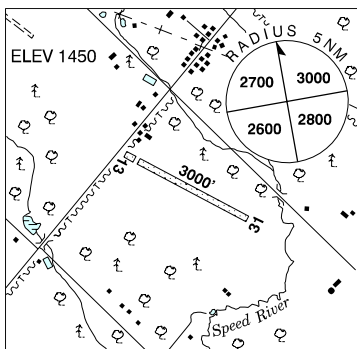
Effective 0901Z 20 November 2008 to 0901Z 15 January 2009

B650 AERODROME/FACILITY DIRECTORY

ORTON / SMITH FIELD ON

CPS7

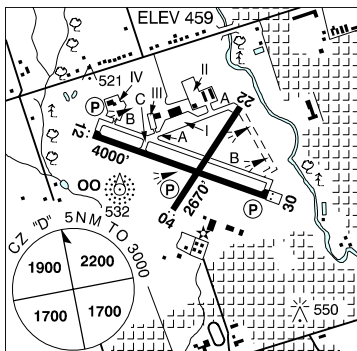
REF	N43 46 30 W80 13 41 0.5S 10°W UTC-5(4) Elev 1450' VTA A5000 F-21
OPR	D. K. & J. Smith 519-855-6641 Reg PPR
PF	B-1 C-2 D-3,4,5,6
FLT PLN	NOTAM FILE CYKF
FIC	London 866-WXBRIEF (Toll free within Canada) or 866-541-4104 (Toll free within Canada & USA)
RWY DATA	Rwy 13/31 3000x80 turf. Thld 13 displ 300'
RCR	Opr No win maint. Rwy soft dur thaw.
COMM	
ATF	tfc 123.2 3NM 3000 ASL
CAUTION	Trees & marked hydro pole 40 AGL adj NE to thld rwy 13. Gliding area 4NM W.



OSHAWA ON

CYOO

REF	N43 55 22 W78 53 42 Adj N 11°W UTC-5(4) Elev 459' VTA A5000 F-21 LO6 T2 HI5 CAP
OPR	Muni 905-576-8146 Cert 1130-0330Z± O/T PPR.
PF	B-1,2,6 C-3,4,5
CUST	AOE/50 888-226-7277 PNR
FLT PLN	NOTAM FILE CYOO
FIC	Pilots to open/close VFR flt pln with London rdo 123.15 or by phone. London 866-WXBRIEF (Toll free within Canada) or 866-541-4104 (Toll free within Canada & USA)
SERVICES	
FUEL	100LL, JA-1
OIL	All
S	1,2,3,4,5,6
PVT ADV	Enterprise Air Inc 131.05; Roaero 123.5; Shell Fuels 129.1
RWY DATA	Rwy 12/30 4000x100 asphalt Rwy 12 down 0.33% Rwy 04/22 2670x100 asphalt Rwy 22 down 0.6%
RCR	Twr 905-576-2398 RSC avbl ltd hrs PLR/PCN.
LIGHTING	04-AS(TE ME) AP, 22-(TE ME), 12-AS(TE HI) P1, 30-AS(TE HI) P2 ARCAL-120.1 type K
COMM	
ATIS	125.675 1130-0330Z±
GND	118.4 1130-0330Z±
TWR	120.1 (V) 1130-0330Z± (emerg only 905-576-2398)
MF	tfc 120.1 0330-1130Z± 5NM 3000 ASL (CAR 602.98)
ARR	Toronto tml 133.4 358.1
DEP	Toronto tml 133.4 363.8
VDF	120.1 1130-0330Z±



CANADA FLIGHT SUPPLEMENT / GPH 205

Effective 0901Z 20 November 2008 to 0901Z 15 January 2009

AERODROME/FACILITY DIRECTORY B651

OSHAWA ON (Cont'd)

CYOO

NAV	VOT 111.8 NDB OO 391 (L) N43 55 15 W78 54 01 at A/D DME IOO 111.35 Ch 50(Y) N43 55 07 W78 53 09 (456') at A/D LOC IOO 111.35
PRO	Rgt hand circuits rwy 22 & 30 (CAR 602.96). On dep no turns below 1000 ASL. Arr turns to final apch will be made at or above 1000 ASL. Fits proh btwn 2230 & 0630 lcl unless appr by APM. Ctc opr for details. Pilots are requested to maintain 2000 ASL or above over Metropolitan Toronto Zoo (N43 49 05 W79 11 15). Tng activity btwn Toronto/Buttonville Municipal & Oshawa aprts. See Planning, Ontario, Hazards to acft operations, Claremont tng area.
CAUTION	Winch launched hang gliders, cable up to 2000 AGL fr N43 55 W79 08 aprx 11 W of A/D. Wildlife frequently on rwys.

OSOYOOS BC

CBB9

REF	N49 02 14 W119 29 20 Adj 18°E UTC-8(7) Elev 1100' aprx A5005 E-15	
OPR	Town 250-495-6515 Reg	
PF	C-1,2,3,4,5 D-6	
FLT PLN	NOTAM FILE CYYP	
FIC	Kamloops 866-WXBRIEF (Toll free within Canada) or 866-541-4101 (Toll free within Canada & USA)	
SERVICES	S 5	
RWY DATA	Rwy 12/30 2477x50 asphalt	
RCR	250-495-6213 No win maint	
COMM	RCO Pacific rdo (Oliver) 126.7 (FISE) ATF tfc 123.2 2NM 2600 ASL	
PRO	Rgt hand circuits rwy 30 (CAR 602.96).	
CAUTION	P-line across apch to rwy 30. Rdo-controlled model acft aprx 200' W of rwy. Dirt ridge parallels rwy on W side aprx 15-20' fr rwy	

OSPIKA BC

CBA9

REF	N56 16 30 W124 03 06 Adj Vacant Logging Camp 22°E UTC-8(7) Elev 2300' aprx A5022 D-12 E-15
OPR	Canadian Forest Products Ltd Brent Sinclair 250-997-2582
PF	B-1,2,5
FLT PLN	NOTAM FILE CYXS
FIC	Kamloops 866-WXBRIEF (Toll free within Canada) or 866-541-4101 (Toll free within Canada & USA)
RWY DATA	Rwy 02/20 5600x60 coarse gravel Trees cleared to 350' aprx.
RCR	OPR No win maint
COMM	ATF tfc 123.2 5NM 5300 ASL
CAUTION	Rwy shoulders unprepared. Ocsl drop-off at rwy edge to 4' deep.

CANADA FLIGHT SUPPLEMENT / GPH 205

Effective 0901Z 20 November 2008 to 0901Z 15 January 2009

B652 AERODROME/FACILITY DIRECTORY

OSTERGARD'S AB — See DRUMHELLER / OSTERGARD'S

CANADA FLIGHT SUPPLEMENT / GPH 205

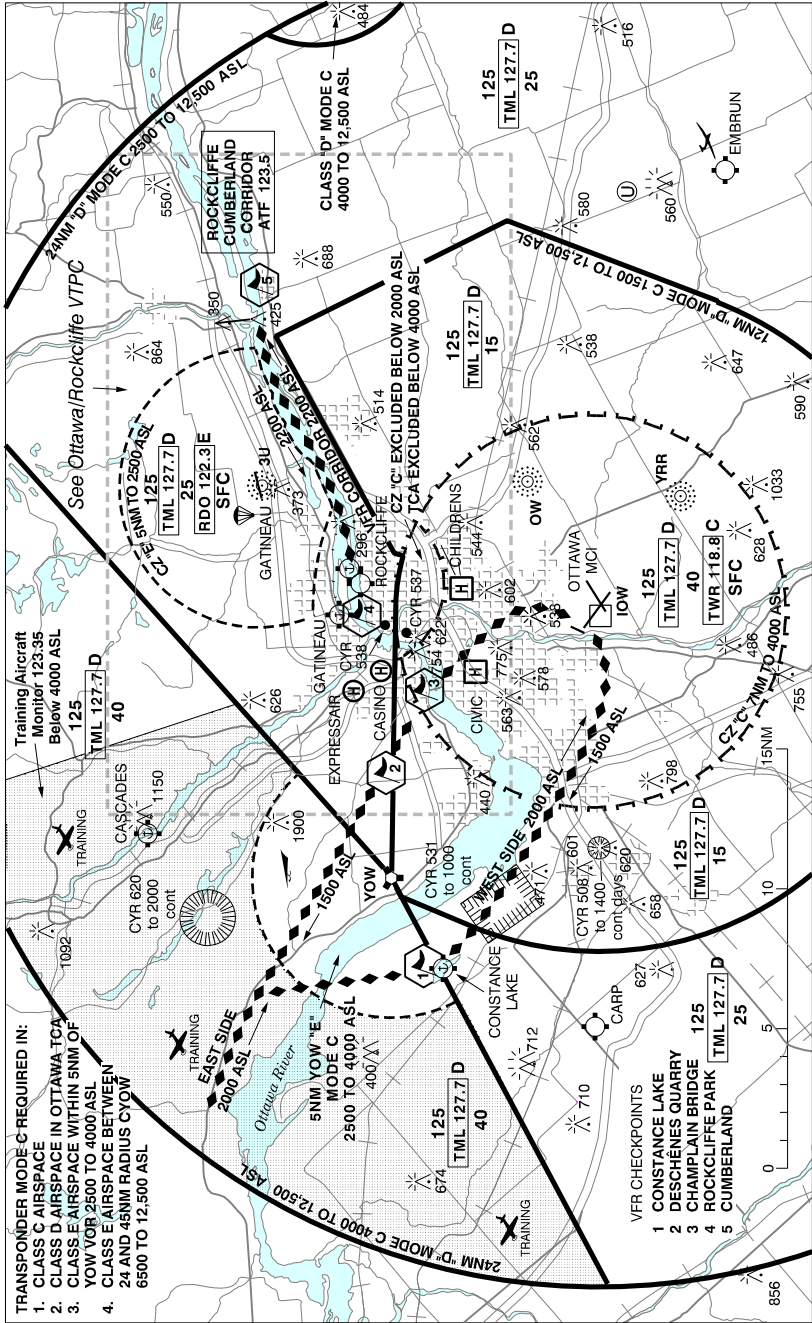
Effective 0901Z 20 November 2008 to 0901Z 15 January 2009

B654 AERODROME/FACILITY DIRECTORY

OTTAWA TCA VFR TERMINAL PROCEDURES CHART (Cont'd)

LOCATION	IDENT	LAT/LONG
CONSTANCE LAKE	VCCON	N45° 25.00 W75° 59.00
DESCHÊNES QUARRY	VCQRY	N45° 25.80 W75° 49.20
CHAMPLAIN BRIDGE	VCCHB	N45° 24.50 W75° 45.50
ROCKLIFFE PARK	VCRCL	N45° 27.40 W75° 40.90
CUMBERLAND	VCMBL	N45° 31.00 W75° 24.60

OTTAWA M.-C.I. VFR TERMINAL PROCEDURES CHART



CANADA FLIGHT SUPPLEMENT / GPH 205

Effective 0901Z 20 November 2008 to 0901Z 15 January 2009

B656 AERODROME/FACILITY DIRECTORY

OTTAWA M.-C.I. VFR TERMINAL PROCEDURES CHART (Cont'd)

LOCATION	IDENT	LAT/LONG
CONSTANCE LAKE	VCCON	N45° 25.00 W75° 59.00
DESCHÉNES QUARRY	VCQRY	N45° 25.80 W75° 49.20
CHAMPLAIN BRIDGE	VCCHB	N45° 24.50 W75° 45.50
ROCKLIFFE PARK	VCRCL	N45° 27.40 W75° 40.90
CUMBERLAND	VCMBL	N45° 31.00 W75° 24.60

VFR FLIGHTS IN OTTAWA CLASS C AND TERMINAL CLASS D AIRSPACE

In order to benefit from immediate and effective Air Traffic Control Radar service thereby minimizing delays and frequency congestion, it is strongly recommended that all VFR flights wishing to penetrate or operate in the Ottawa Class C and Terminal Class D airspace obtain a transponder code.

If you file a VFR flight plan or flight itinerary with NAV CANADA, a transponder code will be assigned to your flight and you will be given this code on first contact with ATC.

If you do not file a VFR flight plan or flight itinerary with NAV CANADA, contact Montréal ACC at 866-VFR-CODE (866-837-2633) at least 30 minutes prior to your flight to obtain your transponder code.

CANADA FLIGHT SUPPLEMENT / GPH 205

Effective 0901Z 20 November 2008 to 0901Z 15 January 2009

AERODROME/FACILITY DIRECTORY B659

OTTAWA (CHILDREN'S HOSP) ON (Heli)

CPK7

REF	N45 24 04 W75 39 01 Adj 14°W UTC-5(4) Elev 272' A5000 A5002	
OPR	Children's Hosp of Eastern Ontario 613-737-7600 Cert PPR	
FLT PLN FIC	(bil) NOTAM FILE CYND Québec 866-GOMÉTÉO or 866-WXBRIEF (Toll free within Canada) or 866-541-4105 (Toll free within Canada & USA)	
PAD DATA RCR	86' dia asphalt 114' dia (rstd to heli with max overall length of 57.5') Opr	
LIGHTING	DR RY (LO)	
COMM RCO TWR	Québec rdo (Ottawa/M.-C. Intl) 123.15 (FISE) Ottawa 118.8	
PRO	Single arr/dep path 210° fr heli. Rstd to multi-engine heli capable of remaining at least 4.5M (15') above all obstacles within arr/dep area when operating in accordance with the aircraft flight manual with one engine inoperative.	

OTTAWA (CIVIC HOSP) ON (Heli)

CPP7

REF	N45 23 30 W75 43 14 14°W UTC-5(4) Elev 265' A5000 A5002	
OPR	Ottawa Civic Hosp 613-761-4000 Cert PPR	
PF	B-1 C-2,3,4,5,6	
FLT PLN FIC	(bil) NOTAM FILE CYND Québec 866-GOMÉTÉO or 866-WXBRIEF (Toll free within Canada) or 866-541-4105 (Toll free within Canada & USA)	
PAD DATA RCR	86' dia asphalt 114' dia Rstd max length 57.5' Opr	
LIGHTING	RY(LO) RF(FL)	
COMM RCO TWR	Québec rdo (Ottawa/M.-C. Intl) 123.15 (FISE) Ottawa 118.8	
PRO	Arr/dep btwn 190° - 220° fr heli.	

CANADA FLIGHT SUPPLEMENT / GPH 205

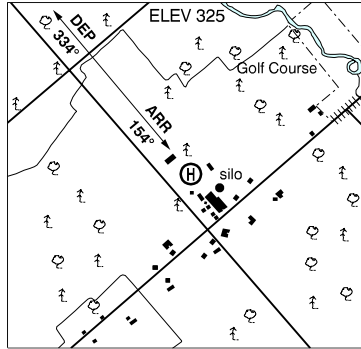
Effective 0901Z 20 November 2008 to 0901Z 15 January 2009

B660 AERODROME/FACILITY DIRECTORY

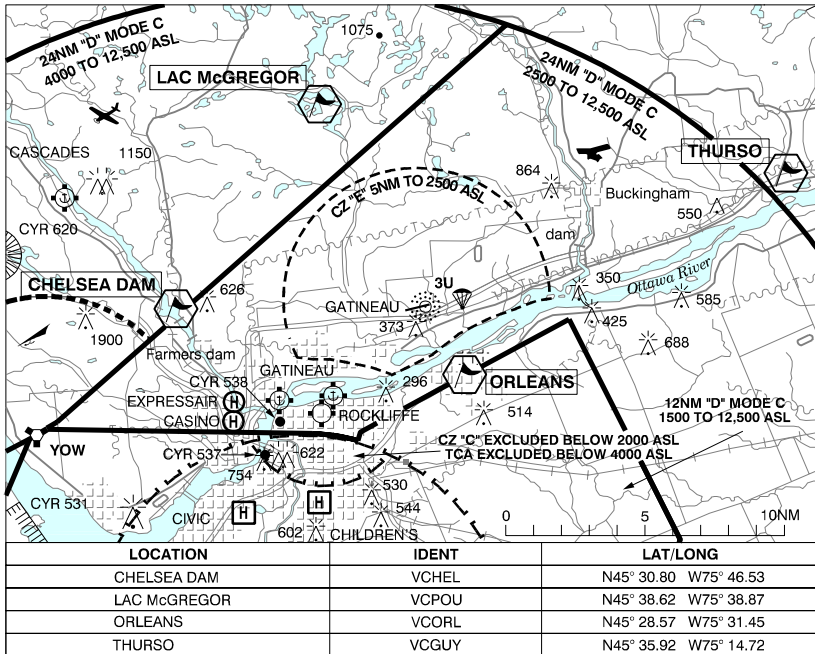
OTTAWA / DWYER HILL ON (Heli)

CYDH

REF	N45 07 50 W75 56 54 14°W UTC-5(4) Elev 325' A5000 A5002 F-21
OPR	DND 613-838-4609 Mil PPR 24 hrs
PF	B-1,2 (avbl 13-21Z†) D-2,3,4,5,6
FLT PLN	(bil) NOTAM FILE CYOW
FIG	Québec 866-GOMÉTÉO or 866-WXBRIEF (Toll free within Canada) or 866-541-4105 (Toll free within Canada & USA)
PAD DATA	180' x 125' turf
COMM	MIL Watchdog 173.340 Ltd hrs O/T PPR 24 hrs notice
PRO	All acft must be established abv 500 AGL if not specifically within the tactical flying area. Care must be exercised on arr/dep to not over-fly sur civ residences. Arr/dep 154°/334° to/fr heli.
CAUTION	Mil 990' firing rng loc 330' NE of landing zone. Extv mil fit below 500 AGL in vic.



OTTAWA / GATINEAU VFR TERMINAL PROCEDURES CHART



CANADA FLIGHT SUPPLEMENT / GPH 205

Effective 0901Z 20 November 2008 to 0901Z 15 January 2009

AERODROME/FACILITY DIRECTORY B661

OTTAWA / GATINEAU QC

CYND

REF	N45 31 17 W75 33 51 1NE 14°W UTC-5(4) Elev 211' A5000 A5002 F-21 LO6 LO7 HI5 T2 CAP	
OPR	La Corporation Aéroport de Gatineau 819-663-0737 Cert	
PF	A-1,2 avbl 12-22Z‡ Mon-Fri; B-1,2,3,6 C-4,5	
FLT PLN	(bil) NOTAM FILE CYND	
FIG	Québec 866-GOMÉTÉO or 866-WXBRIEF (Toll free within Canada) or 866-541-4105 (Toll free within Canada & USA)	
ACC	Montréal 800-633-1353	
WX	METAR 12-02Z‡. TAF 14-02Z‡, issue times: 00, 14, 18Z (DT 00, 13, 18Z)	
PIK	ATB, departure lounge, access during ATB hrs of ops	
SERVICES		
FUEL	100LL, JA-1 11-02Z‡ Mon-Fri, 13-21Z‡ Sat-Sun, 819-663-0737	
OIL	All	
S	1,2,4,5,6	
SUP FL	D-ice	
PVT ADV	Petro T 123.4	
RWY DATA	Rwy 09(090°)/27(270°) 6000x150 asphalt	
TWY	HGR 1 Twy (west of apron) rstd to less than 26,000 kg	
RCR	Aprt 819-663-0737 CRFI avbl 12-02Z‡.	
LIGHTING	09-AJ AS(TE ME) V1, 27-AS(TE ME) V1	
COMM	(bil)	
RADIO	Gatineau 122.3 (V) 1130-0215Z‡ (emerg only 819-643-2961)	
RCO	Québec rdo 126.7 (FISE)	
MF/ATF	Gatineau rdo 122.3 5NM shape irregular 2500 ASL (CAR 602.98) 1130-0215Z‡ O/T ATF 122.3	
TML	Ottawa 127.7 128.175 252.5	
VFR ADV	Ottawa Tml 127.7	
NAV		
NDB	3U 414 (L) N45 31 09 W75 33 51 at A/D	
PRO	Rgt hand circuits rwy 27 (CAR 602.96). Possible turbulence on apch rwy 27 with N wind. VFR FLIGHTS IN OTTAWA CLASS C AND TERMINAL CLASS D AIRSPACE SEE OTTAWA / MACDONALD-CARTIER INTL FOR PROCEDURES.	
CAUTION	Maintenance: Possible NORDO win maint eqpt on rwy outside FSS ops hrs. Parajumps: Over aprt max alt ocsl 15,000 ASL, 11-05Z‡. Airspace: Inbd tfc ctc Gatineau rdo 5 min prior to entering MF zone. Firing range: Aprx 0.5NM NW of thld 09, active May 15-Nov 1 daylight. Windsocks: At thlds not standard. Wildlife: Possibility of animals on rwy, bird activity May-Oct. Hang gliding & paragliding: Activities 5NM around N45 30 05 W75 54 57 (aprx 15NM W of aprt), sfc up to 4000 ASL except in CYOW Class D airspace. Winch is used to launch gliders up to 2000 ASL. Aerobatics: Possible aerobatic activity over A/D btwn gnd and 8500 ASL.	

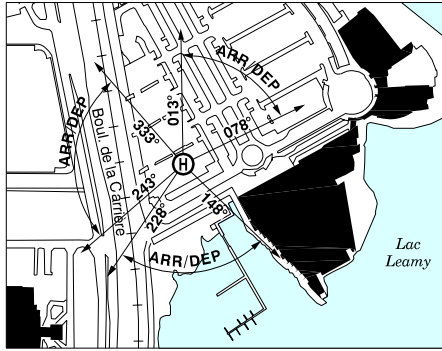
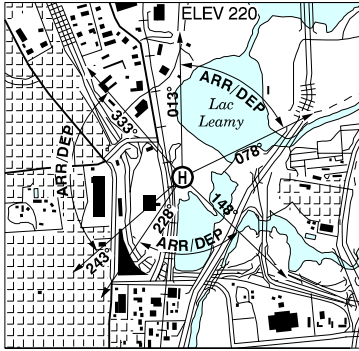
CANADA FLIGHT SUPPLEMENT / GPH 205

Effective 0901Z 20 November 2008 to 0901Z 15 January 2009

B662 AERODROME/FACILITY DIRECTORY

OTTAWA / GATINEAU (CASINO) QC (Heli)

CTA9



REF	N45 26 47 W75 43 35 Adj 14°W UTC-5(4) Elev 220' A5000 A5002
OPR	Casiloc Inc 819-772-2100 Fax 819-772-3704 Cert PNR
PF	C-1,2,3,4,5
FLT PLN	NOTAM FILE CYND
FIG	Québec 866-GOMÉTÉO or 866-WXBRIEF (Toll free within Canada) or 866-541-4105 (Toll free within Canada & USA)
PAD DATA	79' dia concrete
RCR	Opr
LIGHTING	RY (with green lights) ARCAL-123.2 type J
COMM	
ATF	tfc monitor Gatineau rdo 122.3
PRO	Arr/dep btwn 013°-078°, btwn 148°-228° & btwn 243°-333° fr heli.

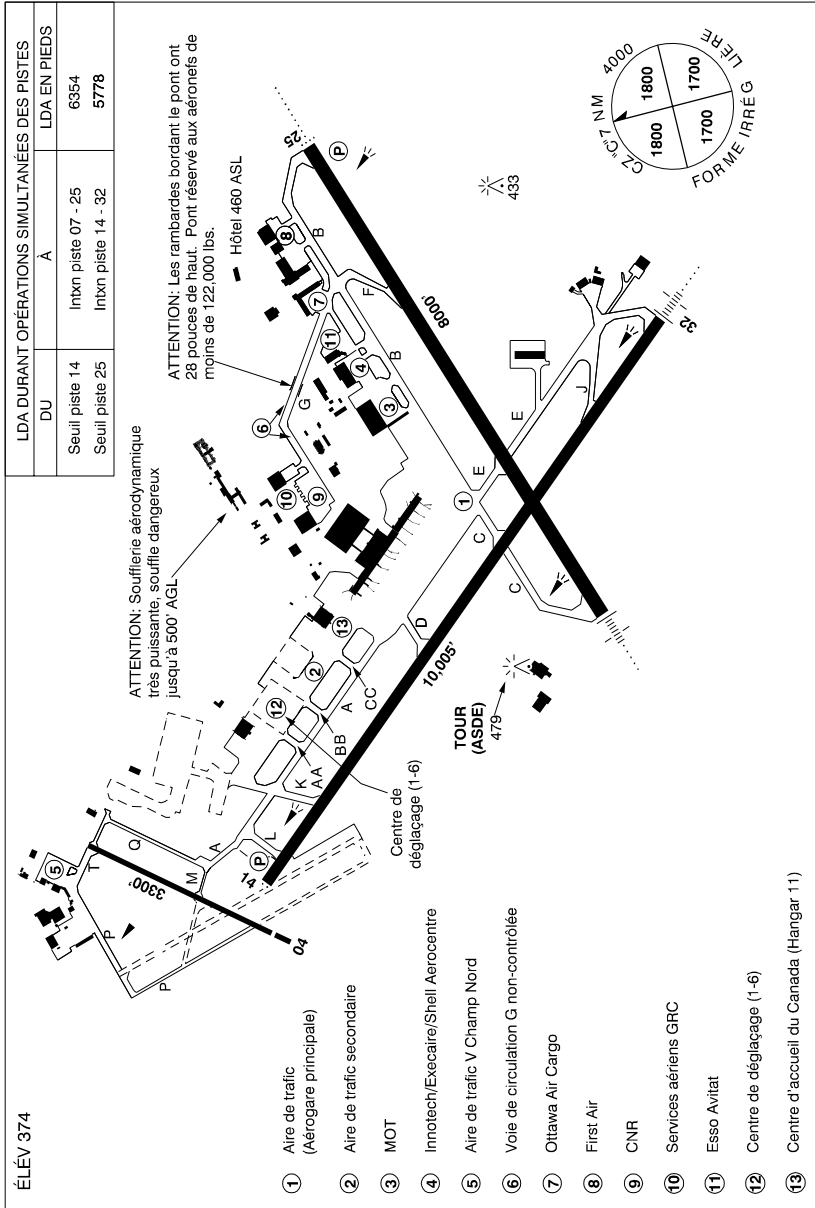
CANADA FLIGHT SUPPLEMENT / GPH 205

Effective 0901Z 20 November 2008 to 0901Z 15 January 2009

AERODROME/FACILITY DIRECTORY B663

OTTAWA / MACDONALD-CARTIER INTL ON

CYW



REF N45 1921 W75 40 09 5.5S 14°W UTC-5(4) Elev 374' A5000 A5002 F-21 LO6 LO7 HI5 T2 CAP RCAP OC

OPR Ottawa Macdonald-Cartier Intl Aprt Authority 613-248-2200 Cert

CANADA FLIGHT SUPPLEMENT / GPH 205

Effective 0901Z 20 November 2008 to 0901Z 15 January 2009

B664 AERODROME/FACILITY DIRECTORY

OTTAWA / MACDONALD-CARTIER INTL ON (Cont'd)

CYOW

PF	A-1,2,3,6 C-4,5
CUST	AOE/165 (450 with staged off-loading) 888-226-7277 Pilots to call appropriate fixed base opr (FBO) prior to ldg on pvt adv freq & request cust be advised of intended location for clnc. Cust clnc at secondary apron 12-05Z± 1 hr PNR.
FLT PLN	NOTAM FILE CYOW
FIC	(bil) Québec 866-GOMÉTÉO or 866-WXBRIEF (Toll free within Canada) or 866-541-4105 (Toll free within Canada & USA)
WX	METAR H24
DUAT	TAF H24, issue times: 00, 03, 06, 09, 12, 15, 18 & 21Z. Ottawa Flying Club; Globe Ground North America Inc; Esso Avitat; Innotech/Execaire/Shell Aerocentre
PIK	Ottawa Aviation Services - Pilot Briefing Room, during regular hours of operation (07-22 lcl time Mon-Thu and 07-19 lcl time Fri-Sun. Closed Dec 25, 26 and Jan 1)
SERVICES	
FUEL	80, 100, JA-1 (CON I IP JA-1, FSII)
OIL	All
S	1(ltd), 2,3,4(ltd)
ARFF	8
PVT ADV	Ottawa Flying Club (North Field) 123.35 13-23Z±; Innotech/Execaire/Shell Aerocentre (South Field) 123.0 10-04Z± Mon-Fri, 10-03Z± Sat-Sun; Ottawa Esso Avitat (South Field) 129.85 10-05Z±
MIL CON	JPD Aviation (Imperial Oil/Esso) 613-739-3776
RWY DATA	Rwy 14(140°)/32(320°) 10,005x200 asphalt Rwy 07(071°)/25(251°) 8000x200 asphalt Rwy 04(039°)/22(219°) 3300x75 asphalt Thld 04 displ 251'.
TWY	Twy G uncontrolled
RCR	Opr CRFI, Win field cond rpts 613-248-2122. PLR/PCN
LIGHTING	07-AN(TE HI), 25-AD(TE HI) P3, 14-AS(TE HI) P3, 32-AN(TE HI)
COMM	(bil)
RCO	Québec rdo 123.15 (FISE)
ATIS	(English) 121.15 265.6 (French) 132.95 382.05
CLNC DEL	Ottawa 119.4 283.5 all dep acft to ctc clnc del
GND	Ottawa 121.9 275.8
TWR	Ottawa 118.8 120.1 236.6 341.3 (E) (emerg only 613-248-3814)
TML	Ottawa 127.7
ARR	Ottawa ARR 135.15 247.0
DEP	Ottawa DEP 128.175 252.5
NAV	
VOT	111.8
NDB	OW 236 (L) N45 21 36 W75 33 40 254° 4.1NM to A/D MOODY ZOW 344 (L) N45 16 40 W75 45 00 071° 3.9NM to A/D GREELY YRR 377 (L) N45 16 06 W75 34 25 320° 4.3NM to A/D
VORTAC	YOW 114.6 Ch 93 N45 26 30 W75 53 49 (450') 142° 11.3NM to A/D
DME	IOW 109.5 Ch 32 N45 18 50 W75 40 01 (396') at A/D
ILS	IOW 109.5 (Rwy 07/25) RVR, localizer IOW front course Rwy 07 reliable only within 25° either side of rwy centreline; IRP 110.3 (Rwy 32/14) RVR

CANADA FLIGHT SUPPLEMENT / GPH 205

Effective 0901Z 20 November 2008 to 0901Z 15 January 2009

AERODROME/FACILITY DIRECTORY B665

OTTAWA / MACDONALD-CARTIER INTL ON (Cont'd)

CYOW

PRO	<p>Circuits: Rgt hand circuits rwys 07, 14 & 22 (CAR 602.96).</p> <p>FOD: The grade of sand which is used extensively on the aprt dur win may pose a FOD hazard to some acft. Formations and other line astern fit ops should adopt pro to avoid ingestion.</p> <p>NOISE ABATEMENT PROCEDURES: Turbo-jet acft: refer to CAP; propeller acft: dep rwy 32 to 1500 ASL before proceeding on crs. Circuit hgt 1500 ASL rwys 04-14 to maintain 1500 ASL, wx permitting, until established on final apch. Tng fit permitted 0815-2359 lcl time, no VFR tng circuits on rwy 14/32 below 1500 ASL, no practice rwy pro to rwy 14.</p> <p>For practice IFR apchs to active IFR rwys dur peak hrs 1315-14Z† & 1930-24Z† Mon-Fri, ctc twr 613-248-3814, for possible delays & rwy info.</p> <p>Turbo-jet take-off and landing not permitted rwy 04/22.</p> <p>WEST VFR ARR/DEP ROUTES: DEPARTURES</p> <ul style="list-style-type: none"> - Rwy 22, proceed direct Bells Corners, direct Constance Lake at 1500 ASL. - Rwy 04, proceed direct Champlain Bridge, direct Deschenes Quarry at 1500 ASL. <p>ARRIVALS</p> <ul style="list-style-type: none"> - Rwy 22, proceed via E side of Ottawa River to Deschenes Quarry & then direct Champlain Bridge at 2000 ASL. - Rwy 04, proceed via W side of Ottawa River to Constance Lake, then direct Bells Corners at 2000 ASL. <p>All other VFR acft should anticipate arr or dep instructions from ATC.</p> <p>DURING DE-ICING OPERATIONS</p> <ol style="list-style-type: none"> 1. Notify Ottawa gnd prior to pushback when de-icing is required. 2. On twys K, AA or CC hold short and ctc iceman on 122.925 for instructions to the de-icing pad. 3. Follow instructions and guidance lights to staging and de-icing bays. 4. After receiving final instructions from iceman with brakes set, acft configured and engines at idle, ctc company de-icing opr on assigned freq or via intercom. 5. After de-icing do not move acft, ctc iceman to advise that all eqpt and staff are away fr the acft. 6. Follow iceman instructions to designated exit points, holding short of twy A, ctc gnd 121.9. <p>VFR FLIGHTS IN OTTAWA CLASS C AND TERMINAL CLASS D AIRSPACE</p> <p>In order to benefit from immediate and effective Air Traffic Control Radar service thereby minimizing delays and frequency congestion, it is strongly recommended that all VFR flights wishing to penetrate or operate in the Ottawa Class C and Terminal Class D airspace obtain a transponder code.</p> <p>If you file a VFR flight plan or flight itinerary with NAV CANADA, a transponder code will be assigned to your flight and you will be given this code on first contact with ATC. If you do not file a VFR flight plan or flight itinerary with NAV CANADA, contact Montréal ACC at 866-VFR-CODE (866-837-2633) at least 30 minutes prior to your flight to obtain your transponder code.</p>
CAUTION	<p>Hang gliding and paragliding activities 5NM around N45 30 05 W75 54 57 (aprx 15NM NW of aprt), sfc up to 4000 ASL except in CYOW Class D airspace. Winch is used to launch gliders up to 2000 ASL.</p>

OTTAWA TERMINAL (emerg only 514-633-3365)

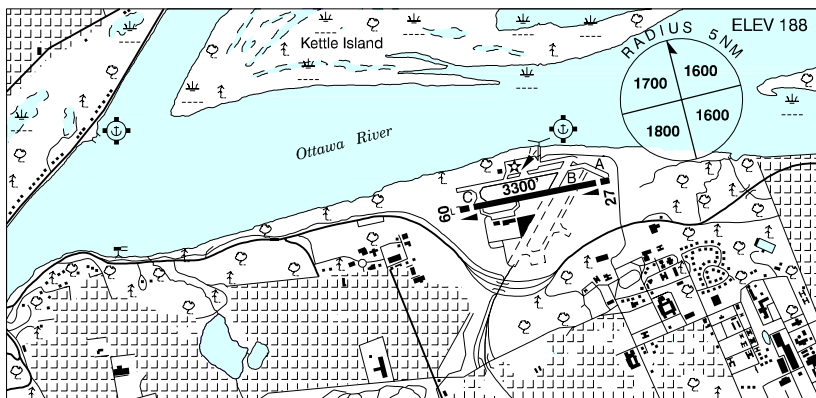
CANADA FLIGHT SUPPLEMENT / GPH 205

Effective 0901Z 20 November 2008 to 0901Z 15 January 2009

B666 AERODROME/FACILITY DIRECTORY

OTTAWA / ROCKCLIFFE ON

CYRO



REF	N45 27 37 W75 38 46 Adj NE 14°W UTC-5(4) Elev 188' A5000 A5002 F-21 LO6 LO7 T2
OPR	Rockcliffe Flying Club 613-746-4425/4427 877-294-5123 Fax 613-746-3354 Cert 12Z† to SS & evenings when flying in progress.
PF	B-1 C-2,3,4,5,6
FLT PLN	(bil) NOTAM FILE CYND
FIC	Québec 866-GOMÉTÉO or 866-WXBRIEF (Toll free within Canada) or 866-541-4105 (Toll free within Canada & USA)
PIK	Rockcliffe Flying Club - Ground School Room, during regular hours of operation (Mar-Nov, 08 lcl time to closing, Dec-Feb, 08-17 lcl time, closed Dec 25 and Jan 1)
SERVICES	
FUEL	100LL
OIL	All
RWY DATA	Rwy 09(093°)/27(273°) 3300x100 asphalt Thld 09 displ 200'. Thld 27 displ 200'. Twy A & B rstd day use only
TWY	
RCR	Oprr Ltd win maint. Rstd to acft 12,500 lbs and under.
LIGHTING	09-(TE LO), 27-(TE LO) Ngt thld 275' fr end of 09 and 1325' fr end of 27, only 1700' lgt. ARCAL-123.5 type J.
COMM	
RCO	Québec rdo (Gatineau) 126.7 (FISE)
ATF	UNICOM ltd hrs O/T tfc 123.5 5NM 3200 ASL excluding Gatineau CZ, Ottawa/Macdonald-Cartier Intl CZ and the airspace that lies within Ottawa TCA class D airspace.
PRO	CIRCUITS: Rgt hand circuits rwy 27 (CAR 602.96). As soon as practicable after tkof fr rwy 09 or 27 turn 20° to the North. MUSEUM: Aircraft wishing to park at the Canada Aviation Museum are requested to contact the Rockcliffe Flying Club, by telephone or unicom, for instructions prior to arrival. AIRSPACE: VFR FLIGHTS IN OTTAWA CLASS C AND TERMINAL CLASS D AIRSPACE SEE OTTAWA / MACDONALD-CARTIER INTL FOR PROCEDURES.
CAUTION	Seaplane traffic - Ottawa/Gatineau water A/D 1.5NM W. Sections of North apron breaking up & covered with loose gravel. Hang gliding and paragliding activities 5NM around N45 30 05 W75 54 57 (aprx 12NM W of aprt), sfc up to 4000 ASL except in CYOW Class D airspace. Winch is used to launch gliders up to 2000 ASL.

CANADA FLIGHT SUPPLEMENT / GPH 205

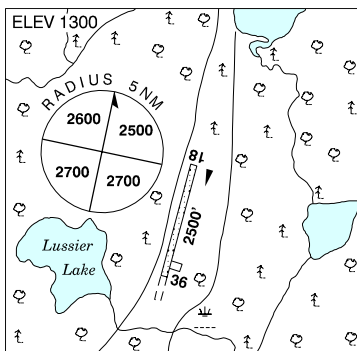
Effective 0901Z 20 November 2008 to 0901Z 15 January 2009

AERODROME/FACILITY DIRECTORY B667

OTTER LAKE SK

CJV4

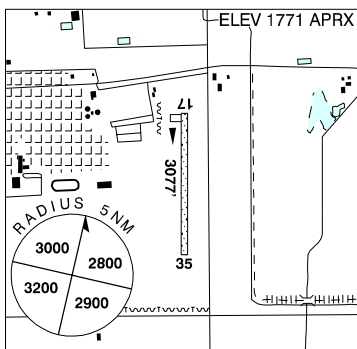
REF	N55 34 52 W104 47 06 1.5S 12°E UTC-6 Elev 1300' A5015 A5016 E-16
OPR	Hamlet of Missinipe 306-635-4540 Reg
FLT PLN FIC	NOTAM FILE CYVC Edmonton 866-WXBRIEF (Toll free within Canada) or 866-541-4102 (Toll free within Canada & USA)
RWY DATA RCR	Rwy 18(181°)/36(001°) 2500x75 gravel/clay Rwy 18 up 2.4% Opr Ltd maint. No win maint.
COMM ATF	UNICOM ltd hrs O/T tfc 122.8 5NM 4300 ASL
CAUTION	Trees & brush adj to rwy sides. Unlgt twr 1357 ASL (212 AGL) 3.7NM NE of A/D.



OUTLOOK SK

CKR9

REF	N51 28 57 W107 02 12 Adj E 13°E UTC-6 Elev 1771' aprx A5006 E-16 LO2
OPR	Town 306-867-8663 Reg
PF	C-1,2,4,5
FLT PLN FIC	NOTAM FILE CYXE Edmonton 866-WXBRIEF (Toll free within Canada) or 866-541-4102 (Toll free within Canada & USA)
SERVICES FUEL OIL	100 20x50 multigrade
RWY DATA RCR	Rwy 17(167°)/35(347°) 3077x100 turf Opr Ltd win maint
LIGHTING	17-(TE LO), 35-(TE LO) ARCAL-123.2 key mic 3 times within 3 sec.
COMM ATF	tfc 123.2 5NM 4800 ASL
PRO	Rgt hand circuits rwy 35 (CAR 602.96).



CANADA FLIGHT SUPPLEMENT / GPH 205

Effective 0901Z 20 November 2008 to 0901Z 15 January 2009

B668 AERODROME/FACILITY DIRECTORY

OWEN SOUND / BILLY BISHOP REGIONAL ON

CYOS

REF	N44 35 25 W80 50 15 3E 10°W UTC-5(4) Elev 1007' A5000 F-21 LO4 LO6 CAP	
OPR	City of Owen Sound 519-371-6936/4394 Cert	
PF	A-1,2 Avbl May 1-Sep 30 13-23Z†, Oct 1-Apr 30 13-22Z† C-2,3,4,5,6	
CUST	AOE/15 888-226-7277 14-22Z† Mon-Fri exc hols, seasonal May 1-Oct 31	
FLT PLN FIC	NOTAM FILE CYVV London 866-WXBRIEF (Toll free within Canada) or 866-541-4104 (Toll free within Canada & USA)	
SERVICES FUEL OIL S	Call out chg levied outside hrs of ops 100LL, JA-1 Aeroshell 15W50 5	
RWY DATA RCR	Rwy 18/36 3932x75 asphalt Rwy 18, first 1849' 1.0% down, last 2083' 0.9% up Opr	
LIGHTING	18-(TE LO) AP, 36-(TE LO) AP ARCAL-123.0 type J	
COMM ATF	UNICOM (AU) ltd hrs O/T tfc 123.0 5NM 4000 ASL	
PRO	Rgt hand circuits rwy 36 (CAR 602.96).	
CAUTION	331' twr 1.2NM W of rwy. Wildlife frequently on rwy.	

OWEN SOUND (GREY BRUCE HEALTH SERVICES) ON (Helicopter)

CNK6

REF	N44 34 05 W80 54 48 0.5E 10°W UTC-5(4) Elev 794' A5000	
OPR	Grey Bruce Health Services 519-376-2121 Ext 2151 Cert PPR	
FLT PLN FIC	NOTAM FILE CYVV London 866-WXBRIEF (Toll free within Canada) or 866-541-4104 (Toll free within Canada & USA)	
PAD DATA	86' x 86' asphalt 114' x 114' Rstd max heli length 57.5'	
LIGHTING	RY(LO) RF(FL)	
COMM A/G	Ambulance dispatch 129.275	
PRO	Arr/dep btwn 161°-196° and 331°-031° fr heli.	

CANADA FLIGHT SUPPLEMENT / GPH 205

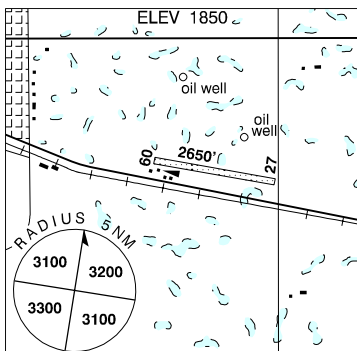
Effective 0901Z 20 November 2008 to 0901Z 15 January 2009

AERODROME/FACILITY DIRECTORY B669

OXBOW SK

CJW2

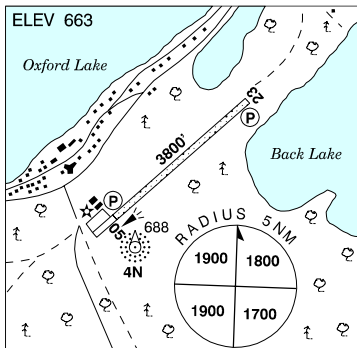
REF	N49 14 W102 09 Adj E 9°E UTC-6 Elev 1850' A5006 E-16
OPR	Town 306-483-2300 Reg
PF	C-1,2,4,5
FLT PLN	NOTAM FILE CYQV
FIC	Edmonton 866-WXBRIEF (Toll free within Canada) or 866-541-4102 (Toll free within Canada & USA)
RWY DATA	Rwy 09(091°)/27(271°) 2650x75 turf/clay
RCR	Opr Ltd win maint. Rwy ruf.
COMM	
ATF	ffc 123.2 5NM 4900 ASL
PRO	Avoid overflying noise sensitive farm 6NM S of A/D.



OXFORD HOUSE MB

CYOH

REF	N54 56 00 W95 16 44 0.5W 2°E UTC-6(5) Elev 663' A5016 E-16 E-17 LO3 RCAP
OPR	Govt of Manitoba 204-677-6722 Cert
PF	A-1 C-2,4 Tml bldg opr 13-18Z†, 19-2115Z† Mon-Fri, clsd Sat, Sun & hols
FLT PLN	NOTAM FILE CYIV
FIC	Winnipeg 866-WXBRIEF (Toll free within Canada) or 866-541-4103 (Toll free within Canada & USA)
RWY DATA	Rwy 05(048°)/23(228°) 3800x75 crushed rock Rwy 05 up 0.45%
RCR	APM 204-538-2475 13-18Z†, 19-2115Z† Mon-Fri exc hols O/T 204-538-2764 Rwy soft dur spring
LIGHTING	05-(TE LO) P1, 23-(TE LO) P1 ARCAL-122.8 type J (see CAUTION)
COMM	
ATF	UNICOM ltd hrs O/T ftc 122.8 5NM 3800 ASL
NAV	
NDB	4N 386 (M) N54 55 43 W95 16 57 at A/D Pvt
CAUTION	Rwy edge lgt installed higher than std (aprx 27 inches high loc 5' outside rwy edge).



CANADA FLIGHT SUPPLEMENT / GPH 205

Effective 0901Z 20 November 2008 to 0901Z 15 January 2009

B670 AERODROME/FACILITY DIRECTORY

OYEN MUNI AB

CED3

REF	N51 20 03 W110 29 29 1S 15°E UTC-7(6) Elev 2498' A5005 A5006 E-16 LO2	
OPR	Town 403-664-3511 Reg	
PF	B-1 C-2,3,4,5,6	
FLT PLN	NOTAM FILE CYXH FIC Edmonton 866-WXBRIEF (Toll free within Canada) or 866-541-4102 (Toll free within Canada & USA) ACC Edmonton IFR 888-358-7526 or 780-890-8304/8305	
SERVICES	FUEL 100LL S 4,5,6	
RWY DATA	Rwy 14(146°)/32(326°) 3000x75 asphalt Rwy 04(046°)/22(226°) 2200x75 sand RCR Opr Ltd maint	
LIGHTING	14-(TE LO), 32-(TE LO)	
COMM	ATF UNICOM ltd hrs O/T tfc 122.8 5NM 5500 ASL	