

CANADA FLIGHT SUPPLEMENT / GPH 205

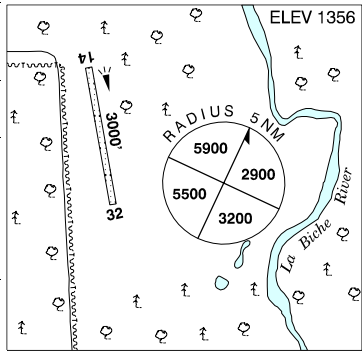
Effective 0901Z 20 November 2008 to 0901Z 15 January 2009

AERODROME/FACILITY DIRECTORY B477

LA BICHE RIVER YT

CFP6

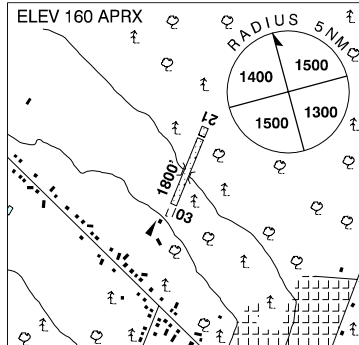
REF	N60 07 45 W124 02 55 25°E UTC-7(6) Elev 1356' A5022 A5029 D-12
OPR	Devon Canada Corp 250-261-0035 Reg PPR
FLT PLN	NOTAM FILE CYQH
FIC	Whitehorse 866-WXBRIEF (Toll free within Canada) or 866-541-4107 (Toll free within Canada & USA)
ACC	Edmonton IFR 888-358-7526 or 780-890-8304/8305
RWY DATA	Rwy 14/32 3000x100 turf/gravel
RCR	Opr Ltd maint
LIGHTING	14-(TE LO) 32-(TE LO)
COMM	
ATF	UNICOM 122.8 5NM 4400 ASL



LAC AGILE (MASCOCHE) QC

CSA2

REF	N45 47 31 W73 38 17 3.5NNW 16°W UTC-5(4) Elev 160' aprx A5002 F-21 VTA
OPR	G. Bourque 450-474-1141 Reg
PF	B-1 C-2,3,4,5,6
FLT PLN	(bil) NOTAM FILE CYUL
FIC	Québec 866-GOMÉTÉO or 866-WXBRIEF (Toll free within Canada) or 866-541-4105 (Toll free within Canada & USA)
SERVICES	
S	1,4
RWY DATA	Rwy 03/21 1800x50 grass Thld 21 displ 200'
RCR	Opr No win maint
COMM	
ATF	tfc 123.2 5NM 3200 ASL outside Montréal/Mascouche MF zone. Monitor Montréal/Mascouche MF 122.35 if possible.
PRO	Rgt hand circuits rwy 21 (CAR 602.96).
CAUTION	Bridge crossing ditch at 225' from displ thld rwy 21. Tall trees rwy 21 edge.



CANADA FLIGHT SUPPLEMENT / GPH 205

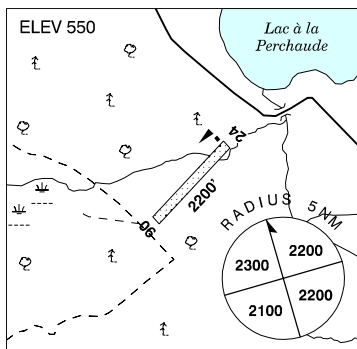
Effective 0901Z 20 November 2008 to 0901Z 15 January 2009

B478 AERODROME/FACILITY DIRECTORY

LAC À LA PERCHAUDE QC

CTE5

REF	N46 37 21 W72 50 45 6W 16°W UTC-5(4) Elev 550' A5002 F-21
OPR	M. Laferrriere 819-539-4772 Reg PPR
FLT PLN FIC	(bil) NOTAM FILE CYQB Québec 866-GOMÉTÉO or 866-WXBRIEF (Toll free within Canada) or 866-541-4105 (Toll free within Canada & USA)
RWY DATA RCR	Rwy 06/24 2200x150 earth/snow Opr Win use only Dec 1-Apr 1 Ltd maint
COMM ATF	tfc 122.7 5NM 3600 ASL



LAC-À-LA-TORTUE QC

CSL3

REF	N46 37 18 W72 37 49 2.6E 17°W UTC-5(4) Elev 434' A5002 F-21	<p>The map shows the aerodrome location relative to Lac-à-la-Tortue. The runway is oriented 03/21. A 5NM radius circle is centered on the aerodrome, with altitudes of 1500, 1900, 2000, and 2100 feet indicated. The elevation of the aerodrome is 434 feet.</p>
OPR	Bel Air Laurentian Aviation Inc 819-538-8623 Reg PPR	
PF	A-1 13-17Z‡ & 18-22Z‡ C-2,3,4,5,6	
CUST	AOE/15 888-226-7277 13-21Z‡ Mon-Fri exc hols	
FLT PLN FIC	(bil) NOTAM FILE CYQB Québec 866-GOMÉTÉO or 866-WXBRIEF (Toll free within Canada) or 866-541-4105 (Toll free within Canada & USA)	
SERVICES FUEL OIL S	100LL All 1,2,3,4,5,6	
RWY DATA RCR	Rwy 03/21 3000x40 asphalt Rwy 16/34 2000x40 asphalt Opr 13-17Z‡ & 18-22Z‡ exc Sat & Sun. Dur thaw period (mid March to end of May) A/D NE sector may be flooded rendering rwys unserviceable. Rwy 03/21 no win maint.	
COMM ATF	(bil) UNICOM ltd hrs O/T tfc 122.7 5NM 3500 ASL	
PRO	Seaplane tfc on adj lake.	
CAUTION	RWY: Cracks in rwy 16/34. OBST: P-lines N of thld 16 not lgtd. BLASTING: Ocsl blasting ops, 1NM radius from N46 34 28 W72 43 42 (5.2NM WSW of A/D), max alt 3700 ASL.	

CANADA FLIGHT SUPPLEMENT / GPH 205

Effective 0901Z 20 November 2008 to 0901Z 15 January 2009

AERODROME/FACILITY DIRECTORY B479

LAC-À-LA-TORTUE QC (water aerodrome)

CSU7

REF	N46 37 00 W72 37 33 2.6E Grand-Mère 17°W UTC-5(4) Elev 427' A5002 F-21	
OPR	Bel Air Laurentian Aviation Inc 819-538-8623 Reg	
PF	B-1 C-2,3,4,5,6 at adj land A/D	
CUST	AOE/15 888-226-7277 13-21Z† Mon-Fri exc hols	
FLT PLN FIC	(bil) NOTAM FILE CYQB Québec 866-GOMÉTÉO or 866-WXBRIEF (Toll free within Canada) or 866-541-4105 (Toll free within Canada & USA)	
SERVICES FUEL OIL S	100LL All 1,2,3,5	
A/D DATA	Open water May-Oct incl. Ramp, crane & sand beach.	
COMM ATF	UNICOM ltd hrs O/T tfc 122.7 5NM 3500 ASL	
PRO	Considerations for noise abatement: a. Take-off when wind conditions permit, from the centre of the lake in a direction parallel to the red buoys (see sketch). b. Apply power progressively. c. After take-off, as soon as possible when safe, reduce power (for constant speed propeller aircraft). d. Avoid low flying over residences.	
CAUTION	OBST: P-line 514 ASL 1NM W. A/D: Land A/D adj W. BLASTING: Ocsl blasting ops, 1NM radius from N46 34 28 W72 43 42 (5.2NM WSW of A/D), max alt 3700 ASL.	

LAC BROCHET MB

CZWH

REF	N58 36 51 W101 28 08 1NE 9°E UTC-6(5) Elev 1212' A5024 D-13 LO1 RCAP	
OPR	Govt of Manitoba 204-677-6722 Cert	
PF	A-1 C-2,4,5 Tml bldg opr 13-18Z†, 19-2115Z† Mon-Fri, clsd Sat, Sun & hols	
FLT PLN FIC	NOTAM FILE CYYL Winnipeg 866-WXBRIEF (Toll free within Canada) or 866-541-4103 (Toll free within Canada & USA)	
RWY DATA RCR	Rwy 02(025°)/20(205°) 3511x100 crushed rock APM 204-337-2011 13-18Z†, 19-2115Z† Mon-Fri exc hols O/T 204-337-2237	
LIGHTING	02-(TE LO), 20-(TE LO) ARCAL-122.8 type J (see CAUTION)	

CANADA FLIGHT SUPPLEMENT / GPH 205

Effective 0901Z 20 November 2008 to 0901Z 15 January 2009

B480 AERODROME/FACILITY DIRECTORY

LAC BROCHET MB (Cont'd)

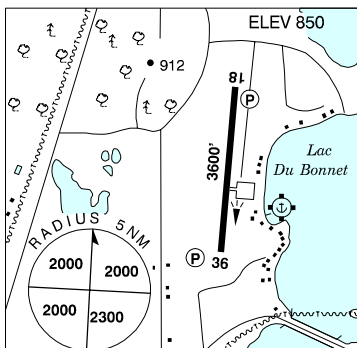
CZWH

COMM		
ATF	UNICOM	ltd hrs O/T tfc 122.8 5NM 4300 ASL
NAV		
NDB	4V 371 (M)	N58 37 06 W101 28 13 at A/D Pvt
CAUTION	Rwy edge lgt installed higher than std (aprx 27 inches high loc 5' outside rwy edge).	

LAC DU BONNET MB

CYAX

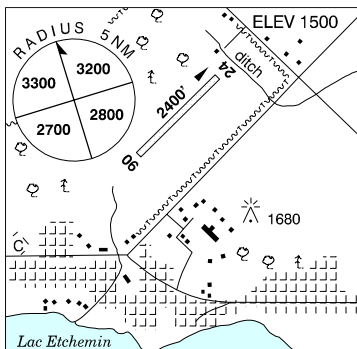
REF	N50 17 40 W96 00 36 3NE 3°E UTC-6(5) Elev 850' A5007 E-16 E-17 LO4
OPR	R.M. of Lac Du Bonnet 204-345-3771 Reg
PF	B-1 C-2,3,4,5,6
FLT PLN	NOTAM FILE CYDN
FIC	Winnipeg 866-WXBRIEF (Toll free within Canada) or 866-541-4103 (Toll free within Canada & USA)
SERVICES	Call out chg may be levied for one or more svcs.
FUEL	100LL, JB PNR 204-345-8322/8332
OIL	All
S	1,2,3,4,5,6
RWY DATA	Rwy 18(182°)/36(002°) 3600x75 asphalt
RCR	FUELER 204-345-8322/8332
LIGHTING	18-(TE LO)AP, 36-(TE LO)AP ARCAL-122.8 type J
COMM	
ATF	UNICOM ltd hrs O/T tfc 122.8 5NM 3900 ASL
PRO	Rgt hand circuits 1600' ASL rwy 18 (CAR 602.96).



LAC ETCHEMIN QC

CSC5

REF	N46 24 26 W70 30 05 Adj N 18°W UTC-5(4) Elev 1500' A5002 F-21
OPR	City 418-625-4521 Reg
PF	C-1,2,3,4,5,6
FLT PLN	(bil) NOTAM FILE CYQB
FIC	Québec 866-GOMÉTÉO or 866-WXBRIEF (Toll free within Canada) or 866-541-4105 (Toll free within Canada & USA)
RWY DATA	Rwy 06/24 2400x85 grass & gravel
RCR	418-625-0049 No win maint
COMM	
ATF	(bil) UNICOM ltd hrs O/T tfc 122.8 5NM 4500 ASL
CAUTION	Twr 130 AGL 0.5NM SSE.



CANADA FLIGHT SUPPLEMENT / GPH 205

Effective 0901Z 20 November 2008 to 0901Z 15 January 2009

AERODROME/FACILITY DIRECTORY B481

LACHUTE QC

CSE4

REF	N45 38 22 W74 22 14 15W 15°W UTC-5(4) Elev 221' VTA A5002 F-21 LO6 LO7 LO8 T2 CAP	
OPR	Lachute Aviation 450-562-1330 Reg	
PF	B-1,2 C-3,4,5,6	
CUST	AOE/15 14-22Z± 888-226-7277 Mon-Fri exc hols	
FLT PLN	(bil) NOTAM FILE CYUL Québec 866-GOMÉTÉO or 866-WXBRIEF (Toll free within Canada) or 866-541-4105 (Toll free within Canada & USA) ACC Montréal 514-633-3211 or 800-633-1353, all Fit Plns, IFR tng PPR. Fit Plns by Fax at 514-633-2877 & include phone numbers where pilot can be reached prior to dep. IFR clearance or activation 514-633-3014.	
SERVICES		
FUEL S	100LL, JA-1 1,2,3,4,5,6	
RWY DATA RCR	Rwy 10/28 3989x100 asphalt Thld 10 displ 895'. Thld 28 displ 210'. Opr	
LIGHTING	10-(TE ME), 28-(TE ME) ARCAL-123.0 type K	
COMM ATF	(bil) UNICOM ltd hrs O/T tfc 123.0 5NM 2500 ASL Outside class "C" airspace	
PRO	Glider activities aprx May-Jun and Sep-Oct, see Montréal VTPC - Glider Operations.	
CAUTION	Due to surrounding terrain, sfc winds may cause windsocks on aprt to show different wind directions. Possibility of deer on rwy.	

LAC LA BICHE AB

CYLB

REF	N54 46 13 W112 01 54 1.5W 17°E UTC-7(6) Elev 1884' A5015 E-15 E-16 LO1 HI3 RCAP	
OPR	Town 780-623-4323/7494 Reg	
PF	B-1 C-2,3,4,5,6	
FLT PLN	NOTAM FILE CYLB Edmonton 866-WXBRIEF (Toll free within Canada) or 866-541-4102 (Toll free within Canada & USA) ACC Edmonton IFR 888-358-7526 or 780-890-8304/8305	
SERVICES	Call out chg may be levied for one or more svcs FUEL 100 OIL All S 1,2,3,4,5,6	
RWY DATA RCR	Rwy 11(112°)/29(292°) 5700 x100 asphalt Opr	
LIGHTING	11-(TE ME) V1, 29-(TE ME) V1 ARCAL-123.2 type K	

CANADA FLIGHT SUPPLEMENT / GPH 205

Effective 0901Z 20 November 2008 to 0901Z 15 January 2009

B482 AERODROME/FACILITY DIRECTORY

LAC LA BICHE AB (Cont'd)

CYLB

COMM	RCO Edmonton rdo 123.475 (FISE) 126.7 (bcst) ATF tfc 123.2 5NM 4900 ASL
NAV	NDB YLB 272 (L) N54 45 24 W112 00 12 293° 1.3NM to A/D
CAUTION	Water bomber activity at or in vic of A/D Apr thru Sep.

LAC LA MARTRE NT — See WHA TI

Sep 09

LACOMBE AB

CEG3

REF	N52 29 18 W113 42 44 0.9NE 17°E UTC-7(6) Elev 2783' A5015 E-15 E-16 LO2	
OPR	Lacombe Flying Club 403-782-3785 Reg	
PF	B-1 C-2,3,4,5	
FLT PLN	FIC NOTAM FILE CYQF Edmonton 866-WXBRIEF (Toll free within Canada) or 866-541-4102 (Toll free within Canada & USA)	
ACC	Edmonton IFR 888-358-7526 or 780-890-8304/8305	
SERVICES	FUEL 100LL PNR Opr S 4,5,6	
RWY DATA	Rwy 16(163°)/34(343°) 3000x74 asphalt RCR Opr Ltd maint	
LIGHTING	16-(TE ME), 34-(TE ME) ARCAL-122.8 type K	
COMM	ATF UNICOM ltd hrs O/T tfc 122.8 5NM 5800 ASL	
PRO	Rgt hand circuits rwy 34 (CAR 602.96).	

LA CRETE AB

CFN5

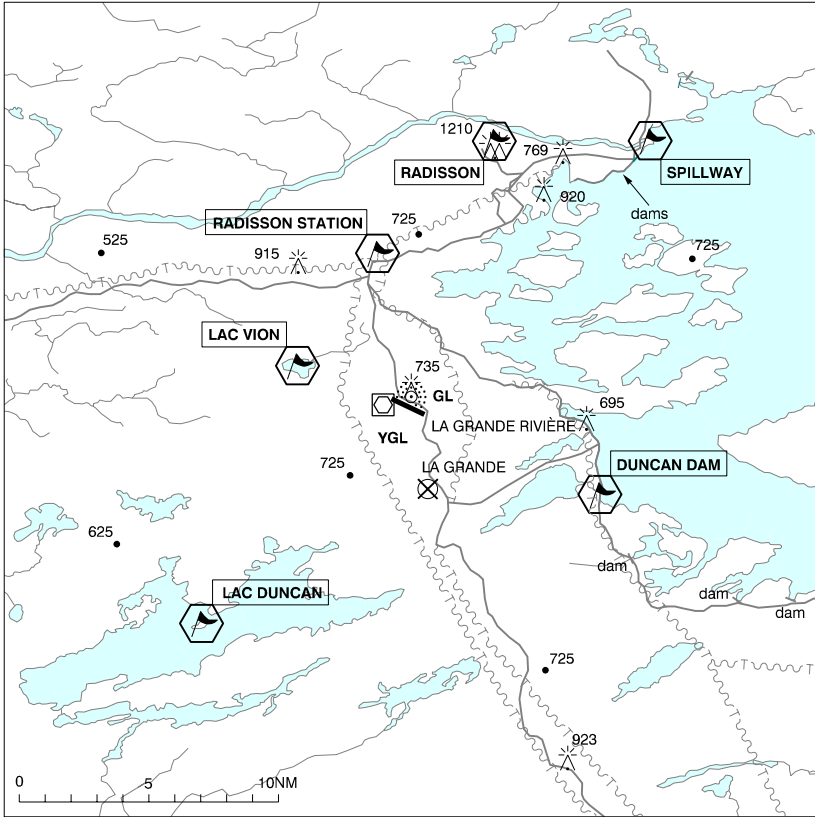
REF	N58 10 W116 20 2.5SE 21°E UTC-7(6) Elev 1046' A5023 D-13	
OPR	MacKenzie County 780-927-3718 Reg	
FLT PLN	FIC NOTAM FILE CYOJ Edmonton 866-WXBRIEF (Toll free within Canada) or 866-541-4102 (Toll free within Canada & USA)	
ACC	Edmonton IFR 888-358-7526 or 780-890-8304/8305	
RWY DATA	Rwy 06(069°)/24(249°) 2950x75 turf RCR Opr Ltd win maint	
LIGHTING	06-(TE ME), 24-(TE ME) ARCAL-123.2 type K	
COMM	ATF tfc 123.2 5NM 4000 ASL	

CANADA FLIGHT SUPPLEMENT / GPH 205

Effective 0901Z 20 November 2008 to 0901Z 15 January 2009

AERODROME/FACILITY DIRECTORY B483

LA GRANDE RIVIÈRE VFR TERMINAL PROCEDURES CHART



LOCATION	IDENT	LAT/LONG
DUNCAN DAM	VCDND	N53° 34.50 W77° 30.02
LAC DUNCAN	VCDKN	N53° 29.03 W77° 56.01
LAC VION	VCION	N53° 39.15 W77° 49.35
RADISSON	VCRAD	N53° 47.62 W77° 36.85
RADISSON STATION	VCRDS	N53° 43.53 W77° 44.03
SPILLWAY	VCSPW	N53° 47.08 W77° 27.28

CANADA FLIGHT SUPPLEMENT / GPH 205

Effective 0901Z 20 November 2008 to 0901Z 15 January 2009

B484 AERODROME/FACILITY DIRECTORY

LA GRANDE RIVIÈRE QC

CYGL

REF	N53 37 31 W77 42 15 17°W UTC-5(4) Elev 639' A5018 E-18 LO3 HI1 HI4 CAP	
OPR	Société de Développement de la Baie James 819-638-8847 Cert Ldg fees	
PF	A-1,2 D-3,4,5,6	
FLT PLN	(bil) NOTAM FILE CYGL Québec 866-GOMÉTÉO or 866-WXBRIEF (Toll free within Canada) or 866-541-4105 (Toll free within Canada & USA) ACC WX Montréal 800-633-1353 METAR 24. TAF H24, issue times: 00, 06, 12, 18Z.	
SERVICES	Call out chg may be levied for one or more svcs	
FUEL	100LL, JA-1 12-22Z± Mon-Fri, 13-22Z± Sat-Sun exc hols O/T 1 hr PNR 819-638-4547 Page 819-638-2424/8927 or 8960	
S	1,2,4 PNR 819-638-8847	
RWY DATA	Rwy 13(130°)/31(310°) 6500x150 asphalt	
TWY	Twy A daylight use only.	
RCR	Opr CRFI, Win maint 1130-22Z (DT 10-21Z) Mon-Fri	
LIGHTING	13-AS(TE ME) P2, 31-AS(TE ME) P2	
COMM	(bil) LA GRANDE 122.3 282.3 (E) (emerg only 819-638-8513) Québec rdo 123.25 (FISE) 126.7 (FISE) rdo 122.3 within 15NM to 3600 ASL (CAR 602.98) Montréal Ctr 132.1	
NAV	NDB GL 201 (M) N53 37 49 W77 42 15 at A/D VOR/DME YGL 112.2 Ch 59 (M) N53 37 32 W77 42 59 (624') at A/D	
CAUTION	Rock butte along S side of rwy. Possibility of wildlife in the vic of rwy Oct-Mar.	

LA GRANDE FSS - RCO

Kuujuarapik 122.2 (RAAS) (N55 16 55 W77 45 55)

CANADA FLIGHT SUPPLEMENT / GPH 205

Effective 0901Z 20 November 2008 to 0901Z 15 January 2009

AERODROME/FACILITY DIRECTORY B485

LA GRANDE-3 QC

CYAD

REF	N53 34 19 W76 11 47 18°W UTC-5(4) Elev 775' A5018 E-18 LO3 HI1 HI4 CAP	
OPR	Hydro-Québec 819-638-2988 Fax 819-638-2976 Reg PPR	
PF	B-1 D-2,5 PNR Opr	
FLT PLN	(bil) NOTAM FILE CYGL Québec 866-GOMÉTÉO or 866-WXBRIEF (Toll free within Canada) or 866-541-4105 (Toll free within Canada & USA) ACC Montréal 800-633-1353 WX METAR 11-20Z‡ Mon-Fri	
SERVICES	PPR charges may be levied for one or more svcs.	
FUEL	JA-1 PNR	
RWY DATA	Rwy 11(105°)/29(285°) 5009x150 gravel Rwy 11 down 0.48%	
RCR	Opr Win maint 12-22Z‡ Mon-Fri	
LIGHTING	11-(TE HI), 29-(TE HI)	
COMM	(bil)	
ATF	UNICOM (AU) ltd hrs O/T tfc 123.0 5NM 3800 ASL	
NAV		
NDB	9H 235 (M) N53 34 26 W76 12 02 at A/D Pvt Unmonitored	
CAUTION	Possible win maint eqpt on rwy outside ops hrs.	

LA GRANDE-4 QC

CYAH

REF	N53 45 17 W73 40 31 20°W UTC-5(4) Elev 1005' A5019 E-18 LO3 LO5 HI1 CAP	
OPR	Hydro-Québec 819-854-6117 Fax 819-854-6109 Reg PPR	
PF	B-1 D-2,4,5 PNR Opr	
FLT PLN	(bil) NOTAM FILE CYGL Québec 866-GOMÉTÉO or 866-WXBRIEF (Toll free within Canada) or 866-541-4105 (Toll free within Canada & USA) ACC Montréal 800-633-1353 WX METAR 13-22Z‡ O/T Legacy AWOS WxCam TAF H10 12-22Z‡, issue times: 12, 18Z.	
SERVICES	PPR charges may be levied for one or more svcs.	
FUEL	JA-1 PNR	
RWY DATA	Rwy 09(092°)/27(272°) 5009x150 gravel	
RCR	Opr 12-22Z‡ Win maint 12-22Z‡ Mon-Fri	
LIGHTING	09-(TE HI), 27-(TE HI)	
COMM	(bil)	
DRCO	Québec rdo 122.5 (FISE)	
ATF	UNICOM (AU) ltd hrs O/T tfc 131.2 5NM 4100 ASL	

CANADA FLIGHT SUPPLEMENT / GPH 205

Effective 0901Z 20 November 2008 to 0901Z 15 January 2009

B486 AERODROME/FACILITY DIRECTORY

LA GRANDE-4 QC (Cont'd)

CYAH

NAV	NDB LG-4 YFM 332 (H) N53 42 41 W73 42 11 034° 2.6NM to thld rwy 09
CAUTION	Possible win maint eqpt on rwy outside ops hrs. Daily radiosonde balloon launches with an ascent rate of 1000 ft/min between the hours of 1115-1345Z & 2315-0145Z. Possibility of caribou on rwy Oct-Feb.

LA LOCHE SK

CJL4

REF	N56 28 24 W109 24 13 1.5SE 16°E UTC-6 Elev 1501' A5023 D-13 E-16 LO1 RCAP	
OPR	Ministry of Hwys & Infrastructure 306-953-3263 Reg	
PF	C-1,2,3,4,5	
FLT PLN	FIC NOTAM FILE CYSF Edmonton 866-WXBRIEF (Toll free within Canada) or 866-541-4102 (Toll free within Canada & USA)	
SERVICES	S 2,4,6	
RWY DATA	Rwy 11(115°)/29(295°) 3800x75 treated gravel Rwy 29 up 0.55%	
RCR	Area office 306-235-1730 or Opr Ltd win maint	
LIGHTING	11-(TE LO) P1, 29-(TE LO) P1 ARCAL-122.8 type J Three ints settings avbl for P1 only.	
COMM	ATF UNICOM ltd hrs O/T tfc 122.8 5NM 4500 ASL	
NAV	NDB 6Z 410 (M) N56 28 42 W109 24 03 at A/D Pvt Unmonitored	

LAMONT (HEALTH CARE CENTRE) AB (Heli)

CLM4

REF	N53 45 49 W112 45 15 Adj SW 17°E UTC-7(6) Elev 2124' VTA A5015	
OPR	Lamont Health Care Centre 780-895-2211 Fax 780-895-7305 Cert PPR	
FLT PLN	FIC NOTAM FILE CYEG Edmonton 866-WXBRIEF (Toll free within Canada) or 866-541-4102 (Toll free within Canada & USA)	
ACC	Edmonton IFR 888-358-7526 or 780-890-8304/8305	
PAD DATA	26'x26' asphalt (4' perimeter fence)	
COMM	ATF tfc 123.4 5NM centered on Chipman (CFU3) 6NM ESE 5200' ASL	
PRO	Single arr/dep path brg 027° fr heliport	
CAUTION	P-lines & poles E and S of heli. Rising terrain to the NNE.	

CANADA FLIGHT SUPPLEMENT / GPH 205

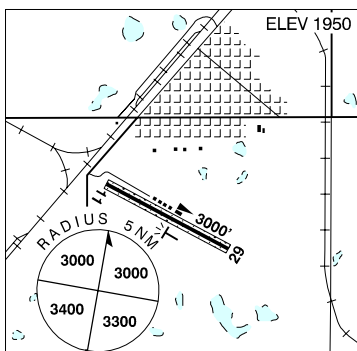
Effective 0901Z 20 November 2008 to 0901Z 15 January 2009

AERODROME/FACILITY DIRECTORY B487

LAMPMAN SK

CJQ2

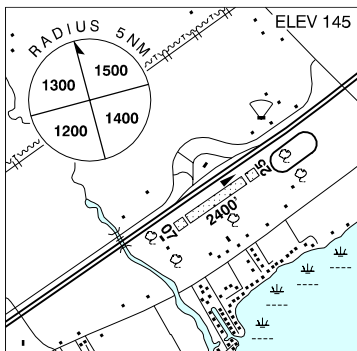
REF	N49 22 W102 46 Adj S 10°E UTC-6 Elev 1950' A5006 E-16
OPR	Lampman Pilots Club 306-487-2463/2462 Reg
PF	C-1,2,4,5
FLT PLN	NOTAM FILE CYQV
FIC	Edmonton 866-WXBRIEF (Toll free within Canada) or 866-541-4102 (Toll free within Canada & USA)
RWY DATA	Rwy 11(108°)/29(288°) 3000x65 turf/asphalt, centre 28' asphalt
RCR	Earl Kickley 306-487-2463 Ltd win maint
LIGHTING	11-(LO), 29-(LO) ARCAL-123.2 type J
COMM	
ATF	tfc 123.2 5NM 5000 ASL



LANCASTER AIRPARK ON

CLA6

REF	N45 12 00 W74 21 45 2.5 ENE 15°W UTC-5(4) Elev 145' VTA A5002 F-21
OPR	Lancaster Airpark Inc. 613-347-2772 Reg PNR
PF	B-1 C-2,5 D-3,4,6
FLT PLN	NOTAM FILE CYCC
FIC	Québec 866-GOMÉTÉO or 866-WXBRIEF (Toll free within Canada) or 866-541-4105 (Toll free within Canada & USA)
RWY DATA	Rwy 07 (070°)/25 (250°) 2400x120 turf Thld 07 displ 400'. Thld 25 displ 400'
RCR	Opr 02-22Z, No win maint
COMM	
ATF	tfc 123.2 5nm 3200 ASL
PRO	Rgt hand circuit rwy 25 (CAR 602.96). Arr & dep over Hwy 401

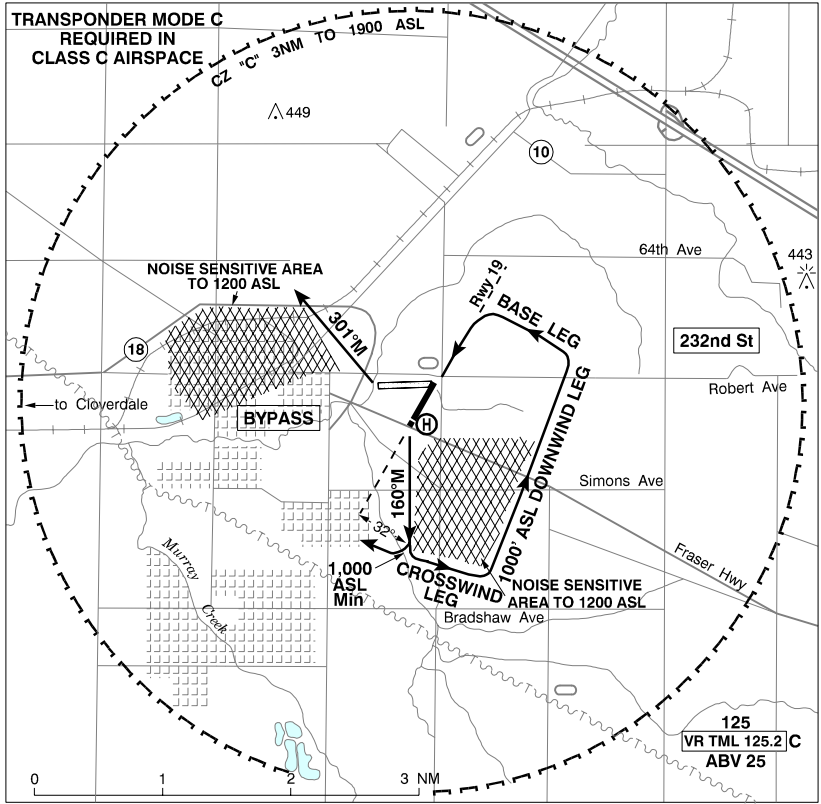


CANADA FLIGHT SUPPLEMENT / GPH 205

Effective 0901Z 20 November 2008 to 0901Z 15 January 2009

B488 AERODROME/FACILITY DIRECTORY

LANGLEY REGIONAL VFR TERMINAL PROCEDURES CHART / FIXED WING

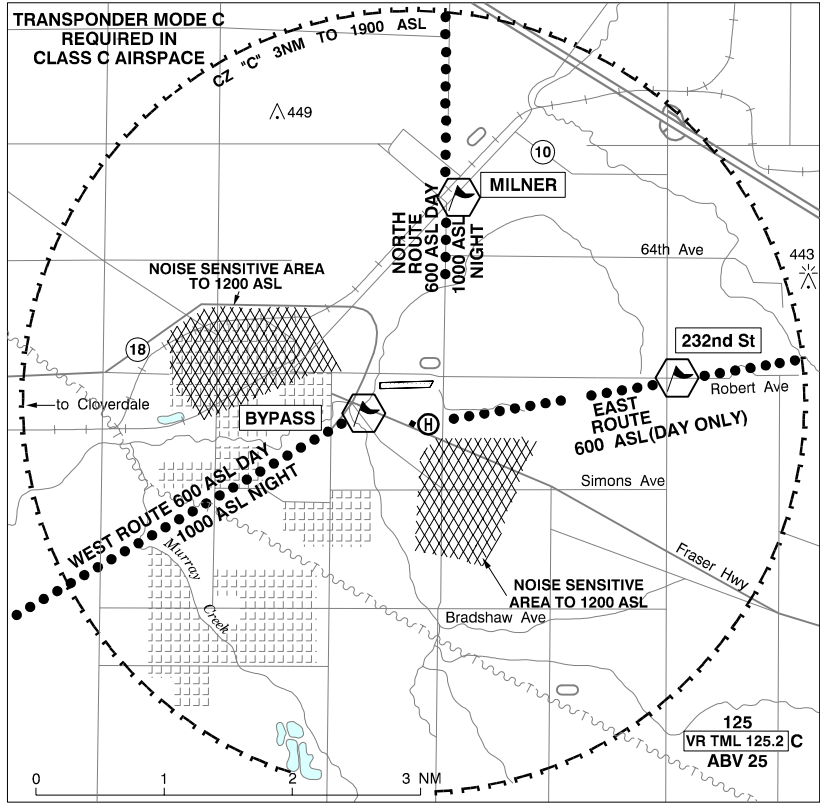


CANADA FLIGHT SUPPLEMENT / GPH 205

Effective 0901Z 20 November 2008 to 0901Z 15 January 2009

AERODROME/FACILITY DIRECTORY B489

LANGLEY REGIONAL VFR TERMINAL PROCEDURES CHART / HELI



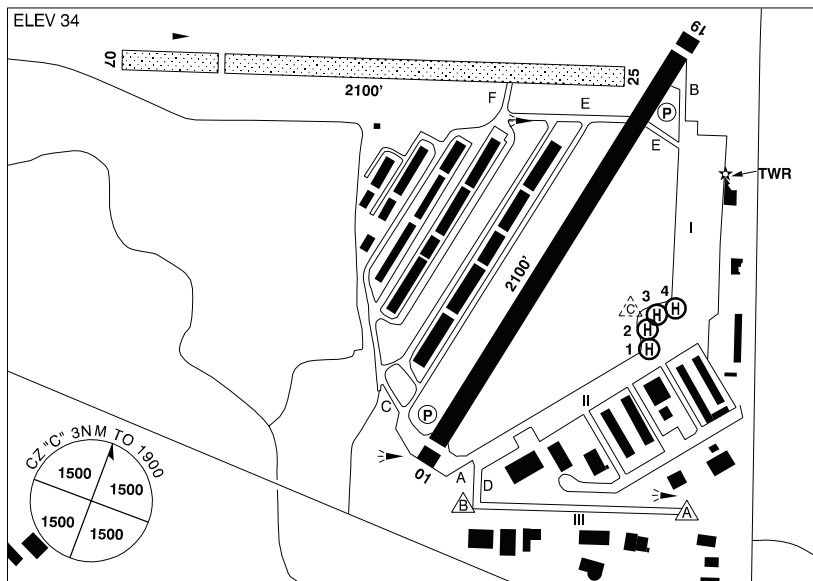
CANADA FLIGHT SUPPLEMENT / GPH 205

Effective 0901Z 20 November 2008 to 0901Z 15 January 2009

B490 AERODROME/FACILITY DIRECTORY

LANGLEY REGIONAL BC

CYNJ



REF	N49 06 04 W122 37 50 Adj 19°E UTC-8(7) Elev 34' VTA A5004 E-15 LO2 T1 CAP
OPR	Township APM 604-534-7330 Cert
PF	B-1,2,3 C-4,5,6
FLT PLN	NOTAM FILE CYNX
FIC	Kamloops 866-WXBRIEF (Toll free within Canada) or 866-541-4101 (Toll free within Canada & USA)
ACC	Vancouver IFR 604-586-4590/4591; IFR tng flts PPR ctc 604-586-4592; ctc Victoria Tml 604-598-4561 for IFR clnc when TWR clsd.
DUAT	APM'S office
PIK	Airport Manager's Office #5385, 24 hr airside access
SERVICES	
FUEL	100LL, JA-1 (by truck, callout 604-308-9538)
OIL	All
S	1,2,3,4,5
PVT ADV	Valley Aero 123.4 604-308-9538 or 604-534-3267
RWY DATA	Aprt rstd to a max wt of 12,500 lbs exc with opr auth. Rwy 01(013°)/19(193°) 2100x75 asphalt Thld 01 & 19 displ 100'. Rwy 07/25 2100x75 turf Thld 07 displ 400'.
APRON	Apron I & II wing tip clearance less than 50' wide in some areas
RCR	twr 604-534-9443 No win maint rwy 07/25 & soft when wet. PLR
PAD DATA	Pad A: 50' x 50' asphalt 150' x 150' day only max length 58' (exc with opr auth) & 20,000 lbs. Pad B: 50' x 50' asphalt 150' x 150' max length 58' (exc with opr auth) & 20,000 lbs. Medevac fit only after 2200 lcl. Pad C: Arr/dep hover area: 4 touchdown Pads: pads 1-4 31' dia concrete.
LIGHTING	01-(TE ME) P1 4.5°, 19-(TE ME) AP 4.0° Pad A: DR (RY LO) after twr hrs rwy & pad alpha lgts on single setting til 0615Z‡ by automatic timer. Pad B: LO (RY) ARCAL-119.0 type J

CANADA FLIGHT SUPPLEMENT / GPH 205

Effective 0901Z 20 November 2008 to 0901Z 15 January 2009

AERODROME/FACILITY DIRECTORY B491

LANGLEY REGIONAL BC (Cont'd)

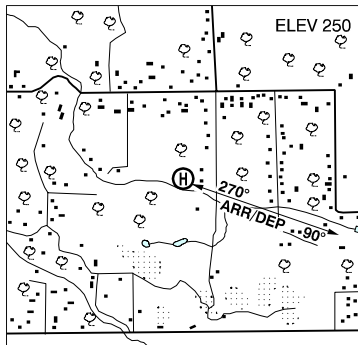
CYNJ

COMM	<p>ATIS 124.5 16-0230Z (DT 15-04Z) 604-534-5247 GND 121.9 16-0230Z (DT 15-04Z) TWR 119.0 (V) 16-0230Z (DT 15-04Z) (emerg only 604-534-9443) MF tfc 119.0 0230-16Z (DT 04-15Z) 3NM 1900 ASL (CAR 602.98)</p>
NAV	<p>VOR PITT MEADOWS YPK 112.4 N49 12 57 W122 42 54 (44') 133° 7.7NM to A/D</p>
PRO	<p>NOISE ABATEMENT PROCEDURES: See VTPC. Rwy 25 Dep: Rgt hand circuits (CAR 602.96). When safe hdg 300° to 700 ASL BPOC. Rwy 19 Dep: Climb rwy hdg til S of Fraser hwy. When safe initial hdg to track 160° obd. Climb to 1000 ASL BPOC. All acft shall only use rwy 01/19 when twr is clsd unless unable due cross wind limitations or other safety considerations. Procedures for crossing the southern Strait of Georgia within Tml Class C airspace refer to Vancouver Intl, VTPC for Crossing the Southern Strait of Georgia. ATS REQUIREMENTS: All VFR acft arriving, departing or transiting the Vancouver or Victoria Tower Class C or D airspace require a transponder code. - All acft departing Vancouver or Victoria Intl (including Water Aerodrome) call Vancouver ACC at 888-987-2633 (888-YVR-CODE) or 604-586-4595 for code assignment at least 30 min prior to flight or file a VFR Flight Plan/Flight Itinerary. - All acft arriving Vancouver, Victoria Intl (including Water Aerodrome) or transiting Vancouver or Victoria Control Zones obtain a code from one of the following ATS units: Vancouver Harbour, Nanaimo, Victoria Harbour, Boundary Bay, Langley, Abbotsford or Pitt Meadows or call Vancouver ACC at 888-987-2633 (888-YVR-CODE) or 604-586-4595. -All acft arriving Victoria Intl from a non NAV CANADA site call Vancouver ACC at 888-987-2633 (888-YVR-CODE) or 604-586-4595 for code assignment at least 30 minutes prior to flight or file a VFR Flight Plan/ Flight Itinerary. HELI Day: Dep expedite climb to 600 ASL. Night: North route arr/dep overfly rwy 01 min alt 1000 ASL at Milner. West route arr/dep overfly Fraser hwy min alt 1000 ASL at bypass. (See VTPC) All Heli must contact GND 121.9 for transponder code and routing info. NORDO arr pro use W routing. Remain over Langley bypass til obtaining visual confirmation from twr BPOC.</p>
CAUTION	<p>Trees to 100 AGL 250' SE pad B. Trees to 100 AGL S of Fraser hwy. Only pilots familiar with this airport dur daylight hrs should use the airport dur hrs of darkness. Ocsl glider activity to 2500 ASL. Use caution when taxiing on Apron I & II due to min wing tip clearance.</p>

LANGLEY (RUSSELL FARM) BC (Heli)

CRF2

REF	N49 00 39 W122 40 19 19°E UTC-8(7) Elev 250' VTA
OPR	Dean Russell 604-514-0424 Reg
PF	A-1 C-2 D-3,4,5,6
FLT PLN	NOTAM FILE CYXX
FIC	Kamloops 866-WXBRIEF (Toll free within Canada) or 866-541-4101 (Toll free within Canada & USA)
SERVICES	S 4,5,6
PAD DATA	35' x 35' concrete 100' x 100' RCR Opr Day only
PRO	Arr/dep 270°/090°



CANADA FLIGHT SUPPLEMENT / GPH 205

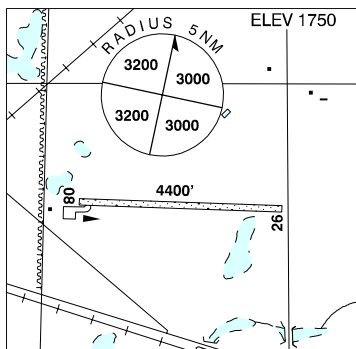
Effective 0901Z 20 November 2008 to 0901Z 15 January 2009

B492 AERODROME/FACILITY DIRECTORY

LANIGAN SK

CKC6

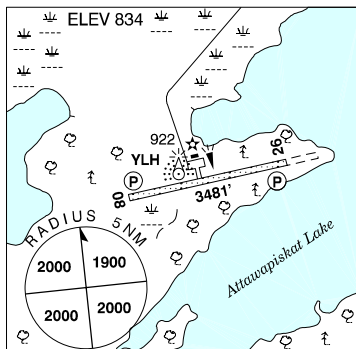
REF	N51 50 43 W104 59 32 1.5E 12°E UTC-6 Elev 1750' A5006 E-16
OPR	Town 306-365-2809 Reg
PF	C-1,2,3,4,5
FLT PLN	NOTAM FILE CYXE
FIC	Edmonton 866-WXBRIEF (Toll free within Canada) or 866-541-4102 (Toll free within Canada & USA)
RWY DATA	Rwy 08(080°)/26(260°) 4400x90 turf
RCR	Opr No win maint
COMM	
ATF	tfc 123.2 5NM 4800 ASL



LANSDOWNE HOUSE ON

CYLH

REF	N52 11 44 W87 56 03 1.5SW 6°W UTC-5(4) Elev 834' A5008 A5017 E-17 LO3 CAP RCAP
OPR	Govt of Ontario 807-473-2082 Cert
PF	C-1,4
FLT PLN	NOTAM FILE CYLH
FIC	Winnipeg 866-WXBRIEF (Toll free within Canada) or 866-541-4103 (Toll free within Canada & USA)
WX	Legacy LWIS (see COMM)
RWY DATA	Rwy 08(084°)/26(264°) 3481x100 gravel
RCR	APM 807-479-2552 Opr 13-22Z† Mon-Fri exc hols Rwy cond subject to seasonal and climatic variations.
LIGHTING	08-(TE LO) AP, 26-(TE LO) AP ARCAL-122.8 type K for APAPI, rwy lgts low intensity only
COMM	
DRCO	Winnipeg rdo 126.7 (FISE)
ATF	tfc 122.8 5NM 3900 ASL
Legacy LWIS	128.4
NAV	
NDB	YLH 247 (M) N52 11 52 W87 56 18 114° 0.3NM to A/D



CANADA FLIGHT SUPPLEMENT / GPH 205

Effective 0901Z 20 November 2008 to 0901Z 15 January 2009

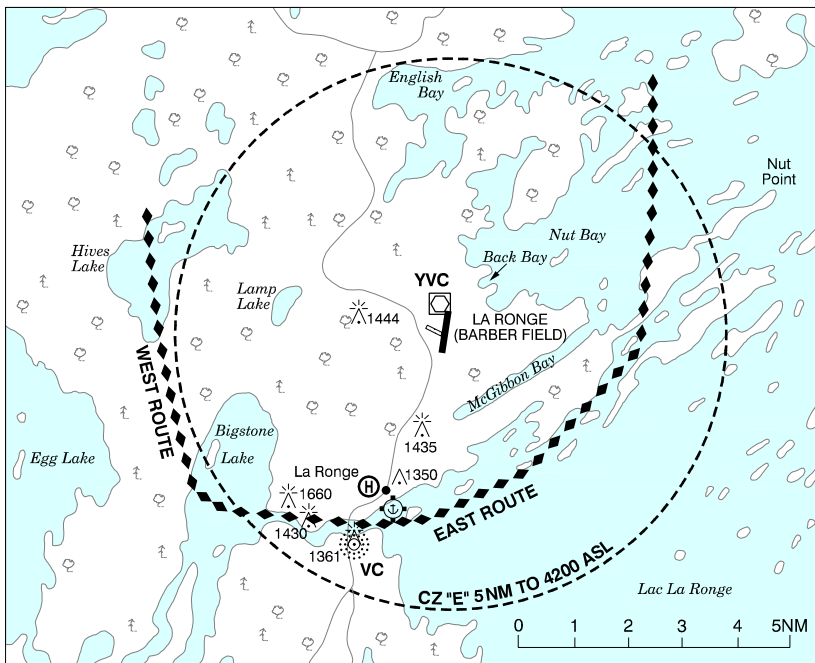
AERODROME/FACILITY DIRECTORY B493

LA ROMAINE QC

CTT5

REF	N50 15 35 W60 40 26 2.5N 22°W UTC-4 Elev 90' A5011 A5012 E-19 F-22 L07 L08 CAP	
OPR	Conseil des Montagnais d'Unamen Shipu 418-229-2984/3004 Cert	
PF	A-1 C-1,2,4	
FLT PLN	(bil) NOTAM FILE CYZV Québec 866-GOMÉTÉO or 866-WXBRIEF (Toll free within Canada) or 866-541-4105 (Toll free within Canada & USA)	
RWY DATA	Rwy 12(115°)/30(295°) 3938x100 asphalt	
RCR	Opr Snow removal 13-20Z O/T PNR 418-229-3004	
LIGHTING	12-AO(TE ME) P2, 30-AS(TE ME) P2 ARCAL-123.5 type K	
COMM		
ATF	Corridor tfc 123.5 aprx 30NM wide along the shore up to & including 12,500 ASL, see Section C Québec	
UNICOM	La Romaine (AU) 123.5 12-20Z Mon-Fri	
CAUTION	Possibility of animals on rwy.	

LA RONGE VFR TERMINAL PROCEDURES CHART



CANADA FLIGHT SUPPLEMENT / GPH 205

Effective 0901Z 20 November 2008 to 0901Z 15 January 2009

B494 AERODROME/FACILITY DIRECTORY

LA RONGE (BARBER FIELD) SK

CYVC

REF	N55 09 05 W105 15 43 2NE 12°E UTC-6 Elev 1242' A5015 A5016 E-16 LO1 HI3 HI4 CAP	
OPR	Town of La Ronge 306-425-2066 Cert	
PF	A-1 C-2,3,4,5,6	
FLT PLN	NOTAM FILE CYVC FIC Edmonton 866-WXBRIEF (Toll free within Canada) or 866-541-4102 (Toll free within Canada & USA) WX METAR H24. PIK TAF H24, issue times: 01, 07, 13, 19Z. ATB main floor, airside access. Door code rqr'd when ATB locked.	
SERVICES	Call out chg may be levied for one or more svcs FUEL 100LL, JA-1 306-425-0528/6845 OIL All S 1,2,3,4,5,6 PVT ADV Shell 122.8 14-23Z	
RWY DATA	Rwy 18(177°)/36(357°) 5000x150 asphalt Rwy 36 up 0.4% Rwy 10(104°)/28(284°) 2350x50 treated gravel Rwy 28 up 0.78% RCR APM 306-425-4530 or Opr PLR/PCN	
LIGHTING	18-AO(TE HI) P1, 36-AO(TE HI) P1	
COMM	RADIO 122.2 (V) (emerg only 306-425-2368) RCO Edmonton rdo 123.25 (FISE) 126.7 (FISE) MF rdo 122.2 5NM 4200 ASL (CAR 602.98) PAL Winnipeg ctr 126.4	
NAV	NDB LA RONGE VC 317 (M) N55 05 10 W105 19 06 016° 4.0NM to thld 36 VOR/DME LA RONGE YVC 112.3 Ch 70 N55 09 30 W105 16 00 (1344') at A/D	
PRO	VTPC - Fixed Wing VFR Routes to/fr water/ski A/D, Info: Float or ski acft transiting to/fr the water/ski A/D should be avoiding the land A/D by 2NM. Northbound or westbound departing float/ski acft should be exiting CZ via W or E route. Float/ski acft inbound fr N or W should be entering CZ via W or E route.	
CAUTION	Extv float/ski ops within CZ. VFR routes to/fr float/ski A/D intersect apch to rwy 36. Extv bird activity Apr-Oct. Possibility of deer or wildlife within airport perimeter.	

CANADA FLIGHT SUPPLEMENT / GPH 205

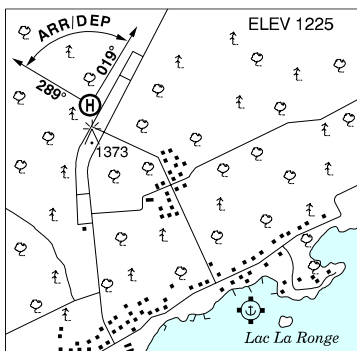
Effective 0901Z 20 November 2008 to 0901Z 15 January 2009

AERODROME/FACILITY DIRECTORY B495

LA RONGE SK (Heli)

CJX3

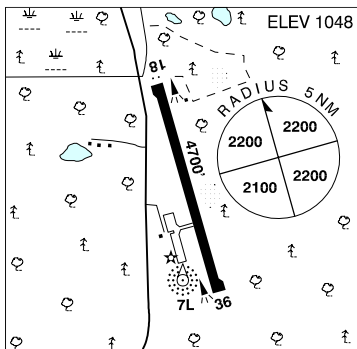
REF	N55 06 53 W105 17 43 Adj W 12°E UTC-6 Elev 1225' A5015 A5016
OPR	Saskatchewan Environment, Forest Fire Management Ctr 306-425-4446 Fax 306-425-4668 Reg PPR
PF	B-1 C-2,3,4,5,6
FLT PLN FIC	NOTAM FILE CYVC Edmonton 866-WXBRIEF (Toll free within Canada) or 866-541-4102 (Toll free within Canada & USA)
SERVICES PVT ADV	Fire Control 163.410
PAD DATA	120' x 120' asphalt/concrete
LIGHTING	RF
COMM	RCO Edmonton rdo 123.25 (FISE) 126.7 (FISE) MF rdo 122.2 5NM 4200 ASL Centred on La Ronge (Barber Field) aprt 2.5NM NNE (CAR 602.98).
PRO	Arr/dep btwn 289°-019° fr heli if cond permit.



LA SARRÉ QC

CSR8

REF	N48 55 02 W79 10 43 7.5NE 13°W UTC-5(4) Elev 1048' A5009 E-18 F-21 LO3 LO4 LO7 CAP
OPR	City 819-333-2282 Reg
PF	A-1 D-2,3,4,5,6
FLT PLN FIC	(bil) NOTAM FILE CYUY Québec 866-GOMÉTÉO or 866-WXBRIEF (Toll free within Canada) or 866-541-4105 (Toll free within Canada & USA)
ACC	Toronto 888-217-1241
SERVICES FUEL	O/R 819-333-5792 100LL, JA-1
RWY DATA	Rwy 18(177°)/36(357°) 4700x100 asphalt
RCR	819-333-6128 No win maint
LIGHTING	18-AS(TE ME), 36-(TE ME) ARCAL-123.2 type K
COMM	ATF tfc 122.8 5NM 4100 ASL
NAV	NDB 7L (L) 405 N48 54 38 W79 10 44 at A/D



CANADA FLIGHT SUPPLEMENT / GPH 205

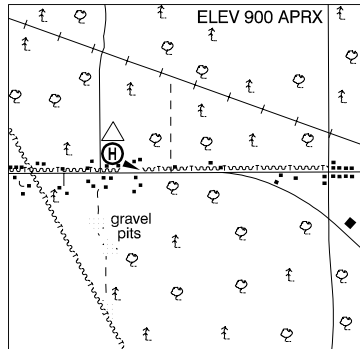
Effective 0901Z 20 November 2008 to 0901Z 15 January 2009

B496 AERODROME/FACILITY DIRECTORY

LA SARRÉ QC (Heli)

CSL2

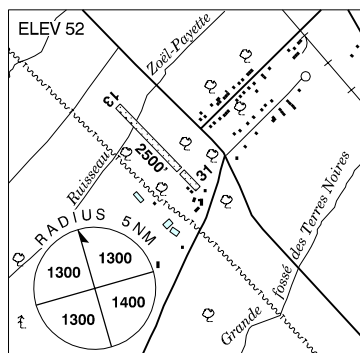
REF	N48 48 31 W79 15 06 1.5W 13°W UTC-5(4) Elev 900' aprx A5009
OPR	Les Hélicoptères Abitibi Ltée 819-333-4047 Reg PPR
PF	A-1 13-22Z† C-2,3,4,5,6
FLT PLN	(bil) NOTAM FILE CYUY Québec 866-GOMÉTÉO or 866-WXBRIEF (Toll free within Canada) or 866-541-4105 (Toll free within Canada & USA)
SERVICES	
FUEL	JA-1
OIL	Jet II
S	1,2,3,4,6
PAD DATA	3 pads 43' dia 1 pad 53' dia Arr/dep hover area 100' x 100'
COMM	
ATF	UNICOM ltd hrs O/T tfc 122.8 5NM 4100 ASL



L'ASSOMPTION QC

CLA2

REF	N45 49 23 W73 27 38 1.6W 16°W UTC-5(4) Elev 52' VTA A5002
OPR	Chic-Air 450-589-5248 Reg
PF	A-1,2 C-3,5
FLT PLN	(bil) NOTAM FILE CYUL Québec 866-GOMÉTÉO or 866-WXBRIEF (Toll free within Canada) or 866-541-4105 (Toll free within Canada & USA)
SERVICES	
FUEL	MOGAS
OIL	All
RWY DATA	Rwy 13/31 2500x60 turf/compacted snow Thld 31 displ 500'.
RCR	Opr
COMM	
ATF	UNICOM ltd hrs O/T tfc 123.2 5NM 3100 ASL outside Class C airspace
PRO	Rgt hand circuit rwy 31 (CAR 602.96).



CANADA FLIGHT SUPPLEMENT / GPH 205

Effective 0901Z 20 November 2008 to 0901Z 15 January 2009

AERODROME/FACILITY DIRECTORY B497

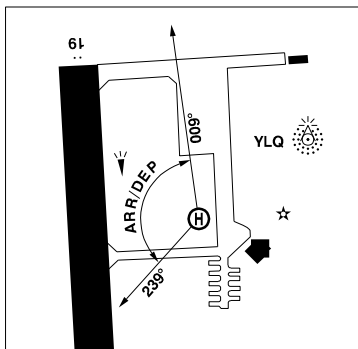
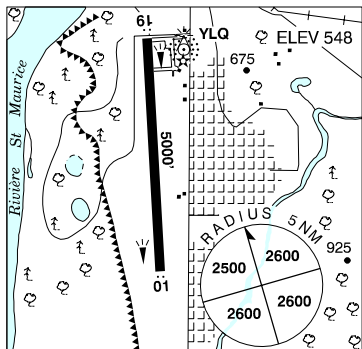
LA TABATIÈRE QC

CTU5

REF	N50 49 51 W58 58 32 23°W UTC-5 (4) Elev 102' A5011 E-19 F-22	
OPR	Les Entreprises Jacques Laforest Inc 418-773-2323/2460 or 418-538-3000 Cert	
FLT PLN FIC	(bil) NOTAM FILE CYZV Québec 866-GOMÉTÉO or 866-WXBRIEF (Toll free within Canada) or 866-541-4105 (Toll free within Canada & USA)	
RWY DATA RCR	Rwy 06/24 1640x82 gravel Opr 418-773-2424, snow removal 0930-19Z	
LIGHTING	06-(TE ME) P1, 24-(TE ME) P1 ARCAL-123.5 type K	
COMM ATF	Corridor tfc 123.5 aprx 30NM wide along the shore up to & including 12,500 ASL, see Section C Québec	

LA TUQUE QC

CYLQ



REF	N47 24 35 W72 47 20 Adj S 17°W UTC-5(4) Elev 548' A5002 F-21 L06 L07 HI5 HI6
OPR	Town (9087-5394 QC Inc) 819-523-8932 Reg Ldg fees at gnt
PF	A-1 C-2,3,4,5,6
FLT PLN FIC ACC	(bil) NOTAM FILE CYQB Québec 866-GOMÉTÉO or 866-WXBRIEF (Toll free within Canada) or 866-541-4105 (Toll free within Canada & USA) Montréal 800-633-1353
SERVICES FUEL OIL	12-21Z± May-Oct; 13-22Z± Nov-Apr. Call out chg may be levied 100, JA All
RWY DATA RCR PAD DATA	Rwy 01/19 5000x150 asphalt Opr 90' x 90' asphalt
LIGHTING	01-AS(TE ME), 19-AS(TE ME) ARCAL-122.8 type K

CANADA FLIGHT SUPPLEMENT / GPH 205

Effective 0901Z 20 November 2008 to 0901Z 15 January 2009

B498 AERODROME/FACILITY DIRECTORY

LA TUQUE QC (Cont'd)

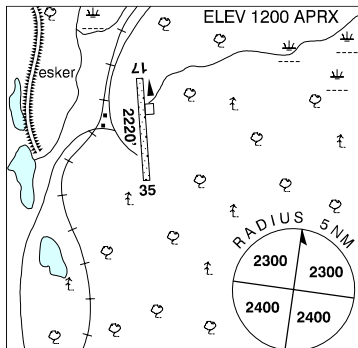
CYLQ

COMM	(bil) UNICOM ltd hrs O/T tfc 122.8 5NM 3600 ASL ATF PAL Montreal Ctr 134.5
NAV	NDB YLQ 289 (M) N47 24 55 W72 47 11 214° at A/D
PRO	Rgt hand circuits rwy 19 (CAR 602.96). HELI Arr/dep 239°-009°
CAUTION	Obst 1.7NM NNW of thld 19 (N47 26 25 W72 48 48) 1149 ASL 300 AGL

LAURIE RIVER MB

CJC8

REF	N56 14 55 W101 18 15 10W 8°E UTC-6(5) Elev 1200' aprx A5016 A5024 D-13 E-16 E-17
OPR	Manitoba Hydro 204-473-2588 Reg
FLT PLN	NOTAM FILE CYYL FIC Winnipeg 866-WXBRIEF (Toll free within Canada) or 866-541-4103 (Toll free within Canada & USA)
RWY DATA	Rwy 17(168°)/35(348°) 2220x70 gravel Rwy 35 slopes down. RCR 204-473-2588 No win maint.
COMM	ATF tfc 123.2 5NM 4200 ASL

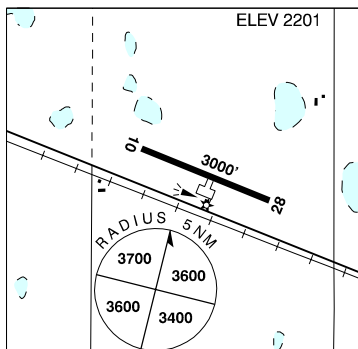


LAURIER WASH USA — See AVEY FIELD STATE / LAURIER

LEADER SK

CJD5

REF	N50 52 38 W109 30 02 1.5SE 14°E UTC-6 Elev 2201' A5006 E-16
OPR	Town 306-628-3868 Fax 306-628-4337 Reg
PF	B-1 C-2,4,5
FLT PLN	NOTAM FILE CYYN FIC Edmonton 866-WXBRIEF (Toll free within Canada) or 866-541-4102 (Toll free within Canada & USA)
SERVICES	FUEL 100LL OIL 15/50
RWY DATA	Rwy 10(095°)/28(275°) 3000x75 asphalt RCR Opr
LIGHTING	10-(TE LO), 28-(TE LO) ARCAL-123.2 key mic 3 times within 5 secs for 15 min duration.
COMM	ATF tfc 123.2 5NM 5300 ASL



CANADA FLIGHT SUPPLEMENT / GPH 205

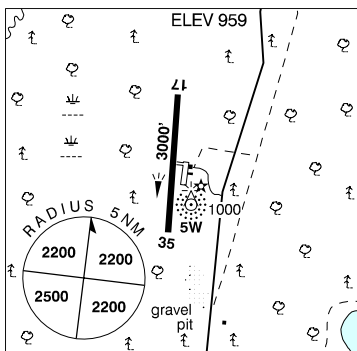
Effective 0901Z 20 November 2008 to 0901Z 15 January 2009

AERODROME/FACILITY DIRECTORY B499

LEAF RAPIDS MB

CYLR

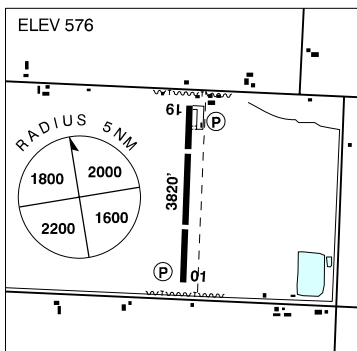
REF	N56 30 48 W99 59 07 3N 7°E UTC-6(5) Elev 959' A5024 D-13 E-16 E-17 LO3 RCAP
OPR	Community 204-473-2436 Reg
PF	A-1 C-2,4,5
FLT PLN	NOTAM FILE CYYL FIC Winnipeg 866-WXBRIEF (Toll free within Canada) or 866-541-4103 (Toll free within Canada & USA)
RWY DATA	Rwy 17(177°)/35(357°) 3000x75 asphalt RCR Opr avbl daylight hrs. Ltd win maint.
LIGHTING	17-(TE ME), 35-(TE ME) ARCAL-123.2 type K
COMM	ATF tfc 123.2 5NM 4000 ASL
NAV	NDB 5W 226 (M) N56 30 42 W99 59 02 at A/D Pvt Unmonitored



LEAMINGTON ON

CLM2

REF	N42 01 30 W82 31 30 2.5E 7°W UTC-5(4) Elev 576' A5000 F-21 LO6 T2 CAP
OPR	Vic Gabrielle/Gino Saccucci 519-326-5786 Reg
PF	B-1 C-1,2,3,4,5,6
FLT PLN	NOTAM FILE CYQG FIC London 866-WXBRIEF (Toll free within Canada) or 866-541-4104 (Toll free within Canada & USA)
SERVICES	FUEL 100LL Mon-Sat 14-22Z± O/T ctc opr
RWY DATA	Rwy 01(010°)/19(190°) 3820x50 asphalt Thld 19 displ 942'. Thld 01 displ 1150'. RCR 519-322-0906 Ltd win main
LIGHTING	01-(TE LO) AP, 19-(TE LO) AP ARCAL-123.2 type J
COMM	ATF tfc 123.2
PRO	Rgt hand circuits rwy 19 (CAR 602.96) pilots are requested to avoid flight below 2000 ASL when flying over Hillman Marsh Conservation Area (located 1.4NM NE of rwy 19 thld).
CAUTION	34 AGL hydro wires on apch to rwy 01/19 loc aprx 300' from both ends of rwy 01/19.



CANADA FLIGHT SUPPLEMENT / GPH 205

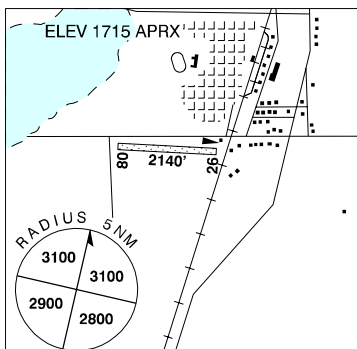
Effective 0901Z 20 November 2008 to 0901Z 15 January 2009

B500 AERODROME/FACILITY DIRECTORY

LEASK SK

CJH8

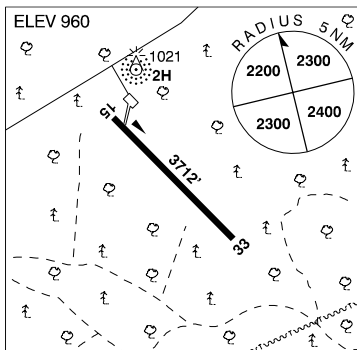
REF	N53 01 W106 45 Adj SW 13°E UTC-6 Elev 1715' aprx A5015 E-16
OPR	Village 306-466-2229 Reg
PF	C-1,2,5
FLT PLN	NOTAM FILE CYP Edmonton 866-WXBRIEF (Toll free within Canada) or 866-541-4102 (Toll free within Canada & USA)
SERVICES	S 4,5
RWY DATA	Rwy 08(080°)/26(260°) 2140x70 turf
RCR	Opr Ltd win maint
COMM	
ATF	tfc 123.2 5NM 4800 ASL
CAUTION	Lgtd tower 2060 ASL (360 AGL) 1.2NM NNE of A/D.



LEBEL-SUR-QUÉVILLON QC

CSH4

REF	N49 01 49 W77 01 02 3SW 15°W UTC-5(4) Elev 960' A5009 E-18 F-21 LO3 LO7 HI1 HI5 CAP
OPR	Ville de Lebel-sur-Quévillon 819-755-4826 Reg PPR
PF	C-1,2,3,4,5
FLT PLN	(bil) NOTAM FILE CYUY Québec 866-GOMÉTÉO or 866-WXBRIEF (Toll free within Canada) or 866-541-4105 (Toll free within Canada & USA)
ACC	Montréal 800-633-1353
RWY DATA	Rwy 15(152°)/33(332°) 3712x100 asphalt
RCR	Ltd win maint, 24 hrs PNR for snow removal 819-755-4826, 819-755-7629 Page 819-280-8363
LIGHTING	15-(TE LO), 33-(TE LO) ARCAL-123.2 type J
COMM	
ATF	tfc 123.2 5NM 4000 ASL
NAV	
NDB	2H 261 (M) N49 02 14 W77 01 15 at A/D
CAUTION	Ocsl NORDO maint vehicles on rwy.



CANADA FLIGHT SUPPLEMENT / GPH 205

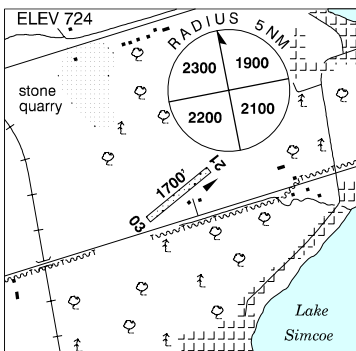
Effective 0901Z 20 November 2008 to 0901Z 15 January 2009

AERODROME/FACILITY DIRECTORY B501

LEFROY ON

CPQ4

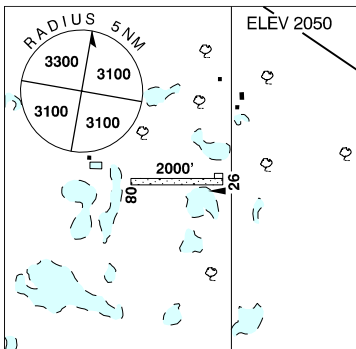
REF	N44 18 W79 33 2N 11°W UTC-5(4) Elev 724' A5000 F-21
OPR	J. Cole 705-456-3138 Reg PPR
PF	B-1 C-2,3,4,5,6
FLT PLN	NOTAM FILE CYEE
FIC	London 866-WXBRIEF (Toll free within Canada) or 866-541-4104 (Toll free within Canada & USA)
SERVICES	S 4,5
RWY DATA	Rwy 03/21 1700x50 turf
RCR	Opr No win maint. Rwy may be soft in spring.
COMM	ATF tfc 122.8 5NM 3700 ASL
CAUTION	P-lines poles red/white striped either side on apch to thld 03.



LEMBERG SK

CKJ9

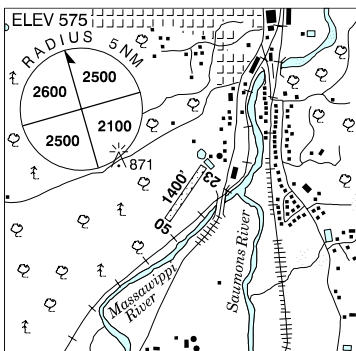
REF	N50 42 32 W103 11 48 1.3S 10°E UTC-6 Elev 2050' A5006 E-16
OPR	Lemberg Flying Club 306-335-2329 Reg
PF	C-1,2,4,5
FLT PLN	NOTAM FILE CYQV
FIC	Edmonton 866-WXBRIEF (Toll free within Canada) or 866-541-4102 (Toll free within Canada & USA)
RWY DATA	Rwy 08(079°)/26(259°) 2000x75 turf
RCR	Town 306-335-2244 No win maint.
COMM	ATF tfc 123.2 5NM 5100 ASL



LENNOXVILLE (AIRVIEW) QC

CTQ4

REF	N45 21 12 W71 51 45 0.5S 16°W UTC-5(4) Elev 575' A5002
OPR	B. Herring 819-566-5835 Reg
FLT PLN	(bil) NOTAM FILE CYSC
FIC	Québec 866-GOMÉTÉO or 866-WXBRIEF (Toll free within Canada) or 866-541-4105 (Toll free within Canada & USA)
RWY DATA	Rwy 05/23 1400 x 60 turf
RCR	Opr No win maint. Ski ops.
CAUTION	Unlghtd tower lctd at N45 23 48 W71 49 52 (2.9NM NE of A/D), 1419 ASL, 419 AGL.



CANADA FLIGHT SUPPLEMENT / GPH 205

Effective 0901Z 20 November 2008 to 0901Z 15 January 2009

B502 AERODROME/FACILITY DIRECTORY

LEOVILLE SK

CJT9

REF	N53 37 14 W107 36 34 2W 14°E UTC-6 Elev 1960' A5015 E-16 LO2		ELEV 1960
OPR	Village 306-984-2140 Reg		
PF	B-1 C-2,4,5,6		
FLT PLN	NOTAM FILE CYPA		
FIC	Edmonton 866-WXBRIEF (Toll free within Canada) or 866-541-4102 (Toll free within Canada & USA)		
SERVICES			
S	4,6		
RWY DATA	Rwy 12(123°)/30(303°) 2400x50 gravel Rwy 16(164°)/34(344°) 3400x75 treated gravel		
RCR	Opr or 306-984-2140		
LIGHTING	16-(TE LO), 34-(TE LO) ARCAL-122.8 type J		
COMM			
ATF	tfc 122.8 5NM 5000 ASL		

LES CÈDRES QC — See MONTRÉAL / LES CÈDRES

LESTER B. PEARSON INTL ON — See TORONTO / LESTER B. PEARSON INTL

LETHBRIDGE AB

CYQL

REF	N49 37 49 W112 47 59 4SSE 16°E UTC-7(6) Elev 3048' A5005 E-15 E-16 LO2 HI3 CAP		ELEV 3048
OPR	County of Lethbridge 403-329-4474 Cert		
PF	A-1,3,6 C-2,4,5		
CUST	AOE/15 888-226-7277 15-03Z‡ 1 hr 30 min PNR		
FLT PLN	NOTAM FILE CYQL		
FIC	Edmonton 866-WXBRIEF (Toll free within Canada) or 866-541-4102 (Toll free within Canada & USA)		
ACC	Edmonton IFR 888-358-7526 or 780-890-8304/8305		
WX	METAR 13-0545Z‡ O/T Legacy AWOS. TAF H24, issue times: 00, 06, 12, 18Z.		
PIK	Airwest hgr, airside access.		

CANADA FLIGHT SUPPLEMENT / GPH 205

Effective 0901Z 20 November 2008 to 0901Z 15 January 2009

AERODROME/FACILITY DIRECTORY B503

LETHBRIDGE AB (Cont'd)

CYQL

SERVICES	Call out chg may be levied for one or more svcs 100LL, JA-1, JB, SP 14-04Z± O/T PNR (CON Airwest group IP JA-1, FSII) Esso 403-328-7879; Airwest 403-328-4488.
FUEL	All
OIL	1,3
SUP FL	D & A-ice, HPOX
JASU	Elect 28 VDC 1200 amp cart, 115/208V 400 Hz 60 KVA cart (Southern Aero Esso 403-328-7879)
PVT ADV	Esso 123.4; Airwest 130.75
MIL CON	Airwest Group Ltd. 403-328-4488
RWY DATA	Rwy 05(054°)/23(234°) 6500x200 asphalt Rwy 23 up 0.51% Rwy 12(124°)/30(304°) 5500x150 asphalt
RCR	Opr, ltd hrs CRF1, PLR/PCN
LIGHTING	05-AN(TE HI), 23-AO(TE HI) P2, 12-AO(TE ME), 30-AO(TE ME) ARCAL-121.0 type K
COMM	
RADIO	121.0 236.6 (E) 1245-0545Z± (emerg only 403-317-4540)
RCO	Edmonton rdo 122.5 (FISE) 126.7 (FISE)
ATIS	124.4 13-0545Z±
MF	rdo ltd hrs O/T tfc 121.0 5NM 6000 ASL (CAR 602.98)
PAL	Edmonton Ctr 132.75 265.2
VDF	121.0
NAV	
NDB	QL 248 (L) N49 36 19 W112 53 38 054° 3.3NM to A/D
VOR/DME	YQL 115.7 Ch 104 N49 38 04 W112 40 04 (3109') 250° 4.8NM to A/D
ILS	IQL 109.5 (Rwy 05/23)
CAUTION	Deer in vic of rwys. Registered A/D (Anderson airstrip) 1.9NM NNE aprt, frequent ultralight/light acft activity, rwy orientation is 05/23.

LETHBRIDGE / ANDERSON AB

CLA5

REF	N49 39 25 W112 46 22 2NE 16°E UTC-7(6) Elev 3002' A5005 E-15 E-16	
OPR	Gordon Anderson 403-328-8747 Reg PPR	
PF	B-1 C-2,3,4,5,6	
FLT PLN	NOTAM FILE CYQL	
FIC	Edmonton 866-WXBRIEF (Toll free within Canada) or 866-541-4102 (Toll free within Canada & USA)	
RWY DATA	Rwy 06(063°)/Rwy 24(243°) 2000x50 turf	
RCR	Opr Ltd win maint.	
COMM		
RADIO	121.0 236.6 (E) 1245-0545± (Emergency only 403-317-4540)	
MF	rdo ltd hrs O/T tfc 121.0 2NM 6000 ASL (CAR 602.96)	
CAUTION	Trees N thld rwy 24.	

CANADA FLIGHT SUPPLEMENT / GPH 205

Effective 0901Z 20 November 2008 to 0901Z 15 January 2009

B504 AERODROME/FACILITY DIRECTORY

LETHBRIDGE (REGIONAL HOSP) AB (Heli)

CLH4

REF	N49 41 09 W112 48 56 16°E UTC-7(6) Elev 2993' A5005	
OPR	Chinook Regional Health Authority 403-382-6111 Cert PPR	
FLT PLN	NOTAM FILE CYQL	
FIC	Edmonton 866-WXBRIEF (Toll free within Canada) or 866-541-4102 (Toll free within Canada & USA)	
ACC	Edmonton IFR 888-358-7526 or 780-890-8304/8305	
PAD DATA	64' dia concrete	
LIGHTING	DR RF(LO) PNR Lgtd windsock SW corner pad	
COMM		
RADIO	121.0 236.6 (E) 1245-0545Z‡ (emergency only 403-317-4540)	
RCO	Edmonton rdo 122.5 (FISE) 126.7 (FISE)	
ATIS	124.4 13-0545Z‡ (at Lethbridge A/D)	
MF	rdo ltd hrs O/T tfc 121.0 5NM centred on Lethbridge A/D 3.4NM SSE 6000 ASL (CAR 602.98)	
PRO	Two arr/dep paths 225° & 344° fr heli, slope 16%, to be used by multi-engine acft only.	
CAUTION	80' stacks aprx 130' NE pad.	

LEWVAN (FARR AIR) SK

CLW2

REF	N49 59 06 W104 06 54 1.0SSW 10°E UTC-6 Elev 1904' A5006 E-16	
OPR	Farr Air Inc 306-536-0891 or 306-245-3225 Fax 306-848-2024 Reg PNR	
PF	B-1	
FLT PLN	NOTAM FILE CYQR	
FIC	Edmonton 866-WXBRIEF (Toll free within Canada) or 866-541-4102 (Toll free within Canada & USA)	
SERVICES		
FUEL	100LL	
OIL	Phillips 20W50, 25W60	
S	1,5,6	
RWY DATA	Rwy 08(080°)/26(260°) 4000x70 gravel	
RCR	Jeff Farr 306-536-0891 or Opr Ltd win maint.	
COMM		
ATF	tfc 123.2 5NM 5000 ASL	
NAV		
NDB	WEYBURN 3N 298 (L) N49 41 48 W103 48 14 315° 21NM to A/D	
CAUTION	P-lines 0.5NM E of A/D. Low level spray ops Jun-Oct.	

CANADA FLIGHT SUPPLEMENT / GPH 205

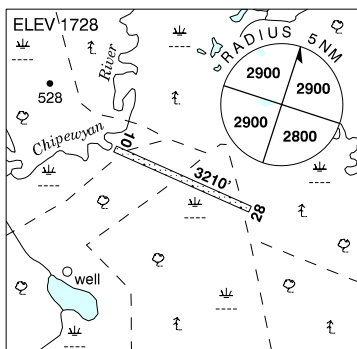
Effective 0901Z 20 November 2008 to 0901Z 15 January 2009

AERODROME/FACILITY DIRECTORY B505

LIEGE / CNRL AB

CLG3

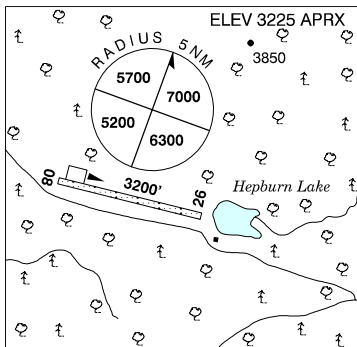
REF	N57 00 07 W113 11 38 1.5S 18°E UTC-7(6) Elev 1728' A5023 LO1 RCAP
OPR	Canadian Natural Resources Ltd 780-899-3811 Reg PPR
FLT PLN	NOTAM FILE CYMM
FIC	Edmonton 866-WXBRIEF (Toll free within Canada) or 866-541-4102 (Toll free within Canada & USA)
ACC	Edmonton 888-538-7526 or 780-890-8304/8305
RWY DATA	Rwy 10(096°)/28(276°) 3210x75 gravel
RCR	Opr
LIGHTING	10-(TE LO), 28-(TE LO)
COMM	
ATF	tfc 123.2 5NM 4800 ASL



LIKELY BC

CAX5

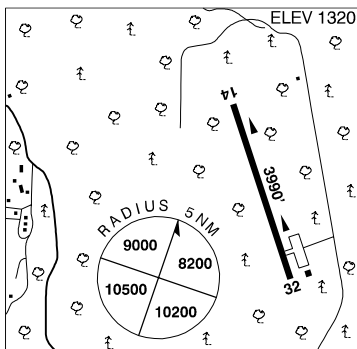
REF	N52 37 W121 30 3WNW 20°E UTC-8(7) Elev 3225' aprx A5014 E-15
OPR	Cariboo Regional District 250-392-3351 250-790-2458 Reg
PF	B-1 C-2,4,5
FLT PLN	NOTAM FILE CYWL
FIC	Kamloops 866-WXBRIEF (Toll free within Canada) or 866-541-4101 (Toll free within Canada & USA)
RWY DATA	Rwy 08/26 3200x65 gravel
RCR	Cariboo road svcs 250-790-2464 No win maint
COMM	
ATF	tfc 123.2 2NM 4700 ASL



LILLOOET BC

CAR3

REF	N50 40 29 W121 53 37 1.5ESE 19°E UTC-8(7) Elev 1320' A5004 E-15
OPR	District 250-256-4289 Reg
PF	A-1 C-2,3,4,5
FLT PLN	NOTAM FILE CYKA
FIC	Kamloops 866-WXBRIEF (Toll free within Canada) or 866-541-4101 (Toll free within Canada & USA)
SERVICES	
FUEL	100LL, JA
S	4,5
RWY DATA	Rwy 14/32 3990x75 asphalt
RCR	Opr



CANADA FLIGHT SUPPLEMENT / GPH 205

Effective 0901Z 20 November 2008 to 0901Z 15 January 2009

B506 AERODROME/FACILITY DIRECTORY

LILLOOET BC (Cont'd)

CAR3

COMM	
ATF	tfc 123.2 5NM 4300 ASL
PRO	Rgt hand circuits rwy 14 (CAR 602.96). PPR fr APM for ultralight ops.
CAUTION	Medium to strong winds cause turbulence over rwy.

LILLOOET (CARIBOO CHILCOTIN) BC (Heli)

CBP5

REF	N50 41 11 W121 55 35 Adj 19°E UTC-8(7) Elev 700' aprx A5004	
OPR	CC Helicopters Ltd 250-376-7790 Reg PPR	
PF	B-1 C-2,3,4	
FLT PLN	NOTAM FILE CYKA	
FIC	Kamloops 866-WXBRIEF (Toll free within Canada) or 866-541-4101 (Toll free within Canada & USA)	
PAD DATA	30' x 30' asphalt 140' x 120'	
COMM		
ATF	tfc 123.2 5NM 3700 ASL	
PRO	Arr/dep over Fraser River. Helis with overall length exceeding 43' arr/dep unmarked arr/dep hover area immediately west of heli.	

LINDSAY ON

CNF4

REF	N44 21 53 W78 47 02 1.1WNN 11°W UTC-5(4) Elev 882' A5000 F-21 LO6 HI5 CAP	
OPR	Lindsay Airpark Ltd. 705-324-8921 Reg Ltd hrs	
PF	B-1,2 C-3,4,5,6	
FLT PLN	NOTAM FILE CYPQ/CZYZ	
FIC	London 866-WXBRIEF (Toll free within Canada) or 866-541-4104 (Toll free within Canada & USA)	
SERVICES		
FUEL	100LL Nov-Apr 14-22Z†, May-Oct 13-23Z†	
OIL	All	
S	3	
RWY DATA	Rwy 13/31 3500x75 asphalt Rwy 02/20 2642x75 turf Thld 02 displ 360°.	
RCR	Opr No win maint rwy 02/20.	
LIGHTING	13-(TE LO), 31-(TE LO) ARCAL-122.8 type K; rotating bcn inop after 0459Z†.	
COMM		
ATF	UNICOM ltd hrs O/T tfc 122.8 5NM 3900 ASL	
ARR	Toronto Centre 134.25	
DEP	Toronto Centre 134.25	

CANADA FLIGHT SUPPLEMENT / GPH 205

Effective 0901Z 20 November 2008 to 0901Z 15 January 2009

AERODROME/FACILITY DIRECTORY B507

LINDSAY ON (Cont'd)

CPN4

NAV VOR/DME	SIMCOE YSO 117.35 Ch 120(Y) N44 14 19 W79 10 18 (931') 076° 18.4NM to A/D
PRO	Rgt hand circuits rwy 13 & 20 (CAR 602.96). Trng activity btwn Toronto/Buttonville Municipal & Oshawa aprts. See Planning, Ontario, Hazards to acft ops, Claremont trng area.

LISTOWEL ON

CPN5

REF	N43 44 34 W80 59 29 1NW 9°W UTC-5(4) Elev 1232' A5000 F-21	
OPR	R.W. Trench 519-291-2265 Reg	
PF	C-1,2,3,4,5,6	
FLT PLN FIG	NOTAM FILE CYKF London 866-WXBRIEF (Toll free within Canada) or 866-541-4104 (Toll free within Canada & USA)	
SERVICES S	5	
RWY DATA RCR	Rwy 04/22 2000x90 turf. Thld 04 displ 200'. Opr Rwy soft in spring. No win maint.	
COMM ATF	tfc 122.8 5NM 4300 ASL	
CAUTION	Trees aprx 80 AGL at thld 04. Marked poles & tana balls on P-lines aprx 40 AGL on apch rwy 22 aprx 200' fr thld 22. Gradual upslope fr thld 04.	

LITTLE BEAR LAKE SK

CKL6

REF	N54 17 31 W104 40 17 Adj E 12°E UTC-6 Elev 2100' aprx A5016 E-16	
OPR	Ivan McArthur 306-426-2504 Bruce Woods 306-426-2098 Reg	
PF	C-1,2,5	
FLT PLN FIG	NOTAM FILE CYP A Edmonton 866-WXBRIEF (Toll free within Canada) or 866-541-4102 (Toll free within Canada & USA)	
RWY DATA RCR	Rwy 02(019°)/20(199°) 2200x40 sand Opr Rwy soft when wet. Ltd win maint.	
COMM ATF	tfc 123.2 5NM 5100 ASL	
CAUTION	Trees adj to rwy thlds & edges. Hill W side of rwy. Acft or vehicles at opposite ends of rwy may not be visible to each other.	

CANADA FLIGHT SUPPLEMENT / GPH 205

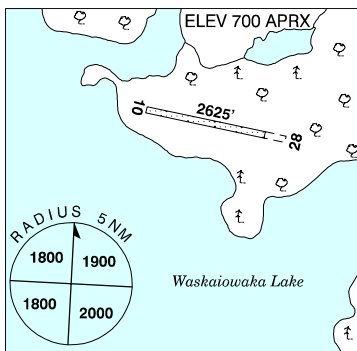
Effective 0901Z 20 November 2008 to 0901Z 15 January 2009

B508 AERODROME/FACILITY DIRECTORY

LITTLE CHURCHILL RIVER MB

CJN7

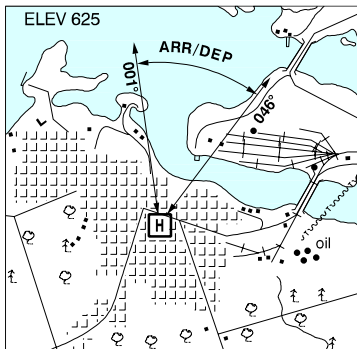
REF	N56 34 48 W96 14 51 Adj SE 3°E UTC-6(5) Elev 700' aprx A5024 D-14 E-17
OPR	Dunlop's Fly In Lodge 204-422-6809 Reg PPR May 15-Sep 30
FLT PLN FIC	NOTAM FILE CYIV Winnipeg 866-WXBRIEF (Toll free within Canada) or 866-541-4103 (Toll free within Canada & USA)
RWY DATA RCR	Rwy 10(099°)/28(279°) 2625x60 clay/gravel/turf Opr or Missinippi Air 204-677-1670 Rwy soft when wet. No win maint.
COMM ATF	UNICOM ltd hrs O/T tfc 122.8 5NM 3700 ASL



LITTLE CURRENT (MANITOULIN HEALTH CENTRE) ON (Heli)

CNT4

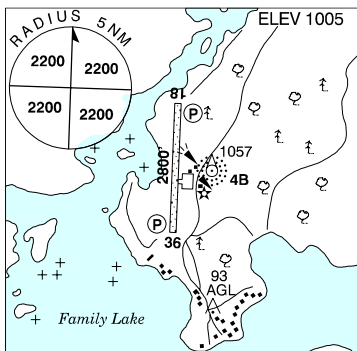
REF	N45 58 41 W81 55 35 Adj 9°W UTC-5(4) Elev 625' A5001
OPR	Manitoulin Health Centre 705-368-2300 Cert PPR
FLT PLN FIC	NOTAM FILE CYZE London 866-WXBRIEF (Toll free within Canada) or 866-541-4104 (Toll free within Canada & USA)
PAD DATA	Rooftop Pad 82' x 72' 11000 lbs
LIGHTING	RY(LO) RF(FL) ARCAL-122.5 key mic 3 times to activate.
COMM A/G	Ambulance dispatch 129.275
PRO	Arr/dep btwn 001°-046° fr heli. Rstd to multi-engine helicopters only.



LITTLE GRAND RAPIDS MB

CZGR

REF	N52 02 44 W95 27 57 0.5 N 2°E UTC-6(5) Elev 1005' A5007 A5016 E-16 E-17 LO4 RCAP
OPR	Govt of Manitoba 204-677-6722 Cert
PF	A-1 C-2,4,5 Tml bldg opr 13-18Z±, 19-2115Z± Mon-Fri, clsd Sat, Sun & hols
FLT PLN FIC	NOTAM FILE CYDN Winnipeg 866-WXBRIEF (Toll free within Canada) or 866-541-4103 (Toll free within Canada & USA)
RWY DATA RCR	Rwy 18(177°)/36(357°) 2800x79 crushed rock Rwy 18 up 0.7% APM 204-397-2012 13-18Z±, 19-2115Z± Mon-Fri exc hols O/T 204-397-2087



CANADA FLIGHT SUPPLEMENT / GPH 205

Effective 0901Z 20 November 2008 to 0901Z 15 January 2009

AERODROME/FACILITY DIRECTORY B509

LITTLE GRAND RAPIDS MB (Cont'd)

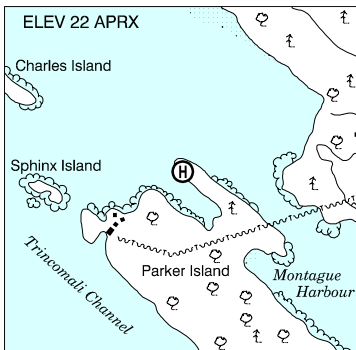
CBZGR

LIGHTING	18-(TE ME) P1, 36-(TE ME) P1 ARCAL-122.8 type K
COMM	
ATF	UNICOM ltd hrs O/T tfc 122.8 5NM 4100 ASL
NAV	
NDB	4B 280 (M) N52 02 39 W95 27 43 at A/D Pvt
CAUTION	Extv low lvl heli tfc vic aprt dur break-up & freeze-up.

LITTLE PARKER ISLAND BC (Heli)

CBK9

REF	N48 53 47 W123 25 06 19°E UTC-8(7) Elev 22' aprx VTA
OPR	J. Bickerstaff 604-222-0056 Reg PPR
FLT PLN	NOTAM FILE CYCD
FIC	Kamloops 866-WXBRIEF (Toll free within Canada) or 866-541-4101 (Toll free within Canada & USA)
PAD DATA	20' x 20' wood 200' x 200' 10,000 lbs
COMM	
ATF	tfc 123.2 5NM 2500 ASL Exc area within class "C" airspace.
PRO	Arr/dep over water
CAUTION	P-lines marked with balls 1500' SE of pad.

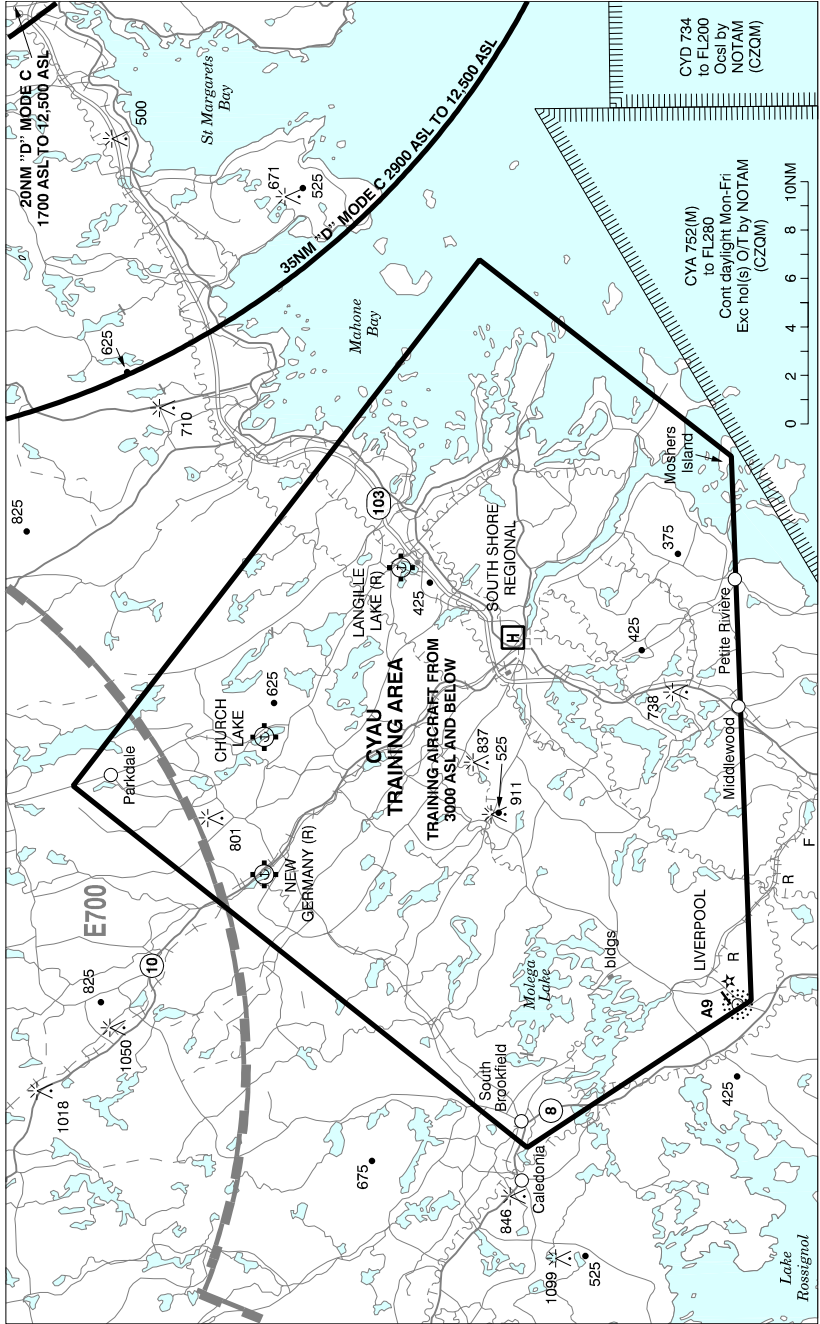


CANADA FLIGHT SUPPLEMENT / GPH 205

Effective 0901Z 20 November 2008 to 0901Z 15 January 2009

B510 AERODROME/FACILITY DIRECTORY

LIVERPOOL VFR TERMINAL PROCEDURES CHART - TRAINING AREA



CANADA FLIGHT SUPPLEMENT / GPH 205

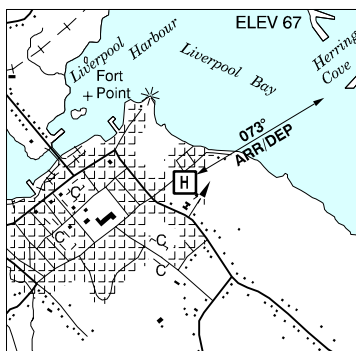
Effective 0901Z 20 November 2008 to 0901Z 15 January 2009

AERODROME/FACILITY DIRECTORY B511

LIVERPOOL (QUEENS GENERAL HOSP) NS (Heli)

CLQ2

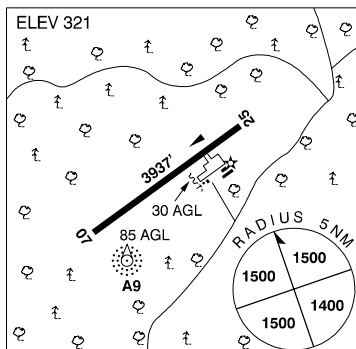
REF	N44 02 19 W64 42 19 Adj 19°W UTC-4(3) Elev 67' A5003 F-22
OPR	Queens General Hosp 902-354-3436 Cert PPR
FLT PLN	NOTAM FILE CYHZ Halifax 866-WXBRIEF or (French) 866-GOMÉTÉO (Toll free within Canada) or 866-541-4106 (Toll free within Canada & USA) ACC Moncton 506-867-7176 or 866-480-8200 Fit Plns by Fax 506-867-7180 & include phone numbers where pilot can be reached prior to dep
PAD DATA	80' dia circular asphalt (rstd to twin engine heli with max overall length of 52.5')
LIGHTING	FH
COMM	ATF tfc 123.2 5NM 3000 ASL
PRO	Single arr/dep path 073° fr heli.



LIVERPOOL / SOUTH SHORE REGIONAL NS

CYAU

REF	N44 13 49 W64 51 22 14NNW 19°W UTC-4(3) Elev 321' A5003 F-22 LO8 CAP
OPR	Region of Queen's Municipality 902-685-2887 Reg
PF	A-1 (ltd hrs) B-1 D-2,3,4,5,6
FLT PLN	NOTAM FILE CYHZ Halifax 866-WXBRIEF or (French) 866-GOMÉTÉO (Toll free within Canada) or 866-541-4106 (Toll free within Canada & USA) ACC Moncton 506-867-7176 or 866-480-8200 Fit Plns by Fax 506-867-7180 & include phone numbers where pilot can be reached prior to dep
RWY DATA	Rwy 07(072°)/25(252°) 3937x75 asphalt RCR Opr Ltd win maint PNR
COMM	ATF UNICOM ltd hrs O/T tfc 122.8 5NM 3300 ASL ARR Moncton Ctr 123.9 DEP Moncton Ctr 123.9
NAV	NDB A9 330 (L) N44 13 37 W64 51 31 at A/D Pvt Unmonitored
CAUTION	P-line aprx 30' high on SW side of apron running NW/SE. Training area around A/D up to 3000 ASL, see VTPC.



CANADA FLIGHT SUPPLEMENT / GPH 205

Effective 0901Z 20 November 2008 to 0901Z 15 January 2009

B512 AERODROME/FACILITY DIRECTORY

LLOYDMINSTER AB

CYLL

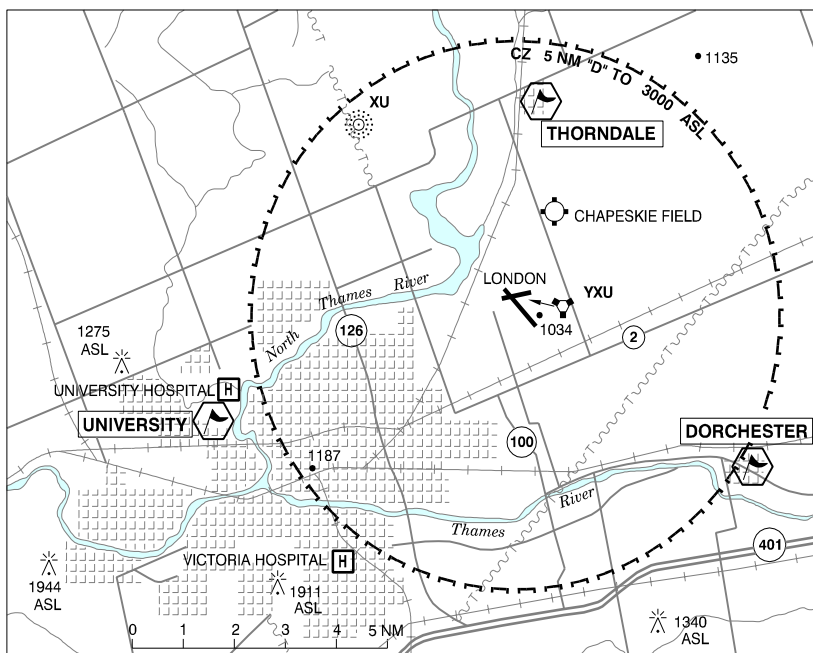
REF	N53 18 33 W110 04 21 2NW 15°E UTC-7(6) Elev 2194' A5015 E-16 LO2 HI3 CAP	
OPR	City 780-875-9215 Cert	
PF	A-1,3 C-2,4,5,6	
FLT PLN	NOTAM FILE CYLL	
FIC	Edmonton 866-WXBRIEF (Toll free within Canada) or 866-541-4102 (Toll free within Canada & USA)	
ACC	Edmonton IFR 888-358-7526 or 780-890-8304/8305	
WX	METAR H24.	
PIK	TAF H24, issue times: 00, 06, 12, 18Z. Caravan Air Ltd hgr, main floor, south wall, airside access.	
SERVICES	Call out chg may be levied for one or more svcs	
FUEL	100LL, JA-1(IP SP) 780-872-5802 or 780-871-1252	
OIL	All	
S	1,2,3,4,5,6	
RWY DATA	Rwy 08(075°)/26(255°) 5579x150 asphalt Rwy 26 up 0.65% Rwy 12/30 1500x100 turf Rwy 12 up 0.40%	
TWY	Twy B and C no vehicle ctl svc	
RCR	Opr 15-24Z† Mon-Fri Rwy 12/30 no win maint.	
LIGHTING	08-(TE ME) P2, 26-(TE ME) P2	
COMM		
RADIO	122.2 (E) (emerg only 780-875-3318)	
RCO	Edmonton rdo 126.7 (FISE)	
MF	rdo 122.2 5NM 5200 ASL (CAR 602.98)	
PAL	Edmonton Ctr 133.45 340.7	
NAV		
NDB	YLL 241 (L) N53 18 47 W110 04 57 108° 0.4NM to A/D	

CANADA FLIGHT SUPPLEMENT / GPH 205

Effective 0901Z 20 November 2008 to 0901Z 15 January 2009

AERODROME/FACILITY DIRECTORY B513

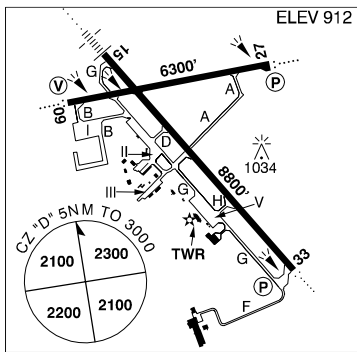
LONDON VFR TERMINAL PROCEDURES CHART



LONDON ON

CYXU

REF	N43 01 59 W81 09 04 5NE 9°W UTC-5(4) Elev 912' A5000 F-21 LO6 HI5 CAP RCAP
OPR	Greater London International Airport Authority 519-452-4015 Cert
PF	A-1,2,3,6 avbl 11-04Z‡ B-1,2,3 C-4,5,6
CUST	AOE/180 (450 with staged off-loading) 888-226-7277 12-05Z‡ PNR prior to 2145Z‡ MEDEVAC & organ transplants, pilots call 519-451-9200 on ldg.
FLT PLN	NOTAM FILE CYXU Pilots to open/close VFR flt pln with London rdo 122.5/126.7 or by phone
FIG	London 866-WXBRIEF (Toll free within Canada) or 866-541-4104 (Toll free within Canada & USA) or 519-452-4040
WX	METAR H24. TAF H24, issue times: 00, 06, 12, 18Z.



CANADA FLIGHT SUPPLEMENT / GPH 205

Effective 0901Z 20 November 2008 to 0901Z 15 January 2009

B514 AERODROME/FACILITY DIRECTORY

LONDON ON (Cont'd)

CYXU

SERVICES	Call out chg may be levied outside hrs of ops 100LL, JA-1, F-34, FSII (CON I IP JA-1, FSII)
FUEL	65, 80, 100
OIL	1,2,3,4,5
S	
ARFF	6 1130-0330Z†, O/T aprt clsd to acct 20 seats & abv, exc for diversions or as an altn A/D, without PPR.
SUP FL	LHOX, D & A-ice
JASU	CE-13,15
PVT ADV	B & W Aviation 122.95 1130-0030Z† 519-451-0210; Executive Aviation Fuels Ltd 122.95 1030-04Z† 519-453-5370
MIL CON	Executive Aviation (Imperial Oil/Esso) 519-453-5370
RWY DATA	Rwy 15(148°)/33(328°) 8800x200 asphalt Rwy 09(088°)/27(268°) 6300x200 asphalt
TWY	Twys B & F uncontrolled
RCR	FSS CRFI/RSC avbl 11-0430Z† No win maint 0430-11Z† O/T call out chg 3 hrs PNR PLR/PCN
LIGHTING	09-AO(TE ME) V2, 27-AO(TE ME) P2, 15-AN(TE HI), 33-AO(TE HI) P2 ARCAL-119.4 type K (when twr closed)
COMM	
RCO	Sault rdo 119.4 236.6 (RAAS) 0345-1120† London rdo 122.5 126.7 321.3 (FISE)
ATIS	127.8 1120-0345Z† (O/T LWIS (wind & altimeter) 127.8)
GND	121.9 360.2 1120-0345Z†
TWR	119.4 236.6 (E) 1120-0345Z† (emerg only 519-451-9610)
MF	Sault rdo 119.4 236.6 0345-1120Z† 5NM 3000 ASL (CAR 602.98)
PAL	Toronto Ctr 135.3 135.625 266.3
NAV	
VOT	114.8
NDB	XU 382 (L) N43 05 29 W81 13 07 148° 3.9NM to A/D THAMES ZXU 201 (L) N42 58 56 W81 05 19 328° 3.3NM to A/D
VORTAC	YXU 117.2 Ch 119 N43 02 16 W81 08 56 (938') at A/D
ILS	IXU 109.5 (Rwy 15/33) RVR
PRO	Rgt hand circuits rwys 33 & 09 (CAR 602.96). Circuit hgt 1900 ASL all rwys. IFR training fts are to ctc Toronto flow ctl 800-268-4831 within 2 hrs of ETD for possible delays.
CAUTION	Migratory birds in vic of aprt Sep-May.

CANADA FLIGHT SUPPLEMENT / GPH 205

Effective 0901Z 20 November 2008 to 0901Z 15 January 2009

AERODROME/FACILITY DIRECTORY B515

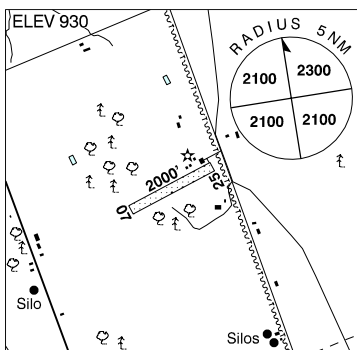
LONDON FIC – RCO

- Ameson** 126.7 (FISE) DRCO (N49 47 W84 36)
- Attawapiskat** 126.7 (FISE) DRCO (N52 56 W82 25)
- Campbellford** 126.7 (FISE) DRCO (N44 20 W77 42)
- Earlton** 126.7 (FISE) (N47 42 W79 51)
- Geraldton** 126.7 (FISE) (N49 46 W86 59)
- Gore Bay-Manitoulin** 126.7 (FISE) (U) (N45 53 W82 34)
- Kapuskasing** 123.275 (FISE) 126.7 (bcst) (N49 25 W82 28)
- Kingston** 126.7 (FISE) (N44 14 W76 36)
- London** 126.7 122.5 321.3 (FISE) (N43 02 W81 09)
- Midland / Huronia** 126.7 (FISE) DRCO (N44 35 W79 48)
- Moosonee** 123.475 (FISE) (N51 17 W80 36)
- Muskoka** 123.475 (FISE) 126.7 (bcst) (N44 58 W79 18)
- North Bay** 126.7 (FISE) (N46 22 W79 25)
- St. Catharines** 126.7 (FISE) (N43 11 W79 10)
- Sarnia (Chris Hadfield)** 126.7 (FISE) (N43 00 W82 18)
- Sault** 122.5 126.7 (FISE) (N46 29 W84 31)
- Sudbury** 123.475 (FISE) 126.7 (bcst) (N46 38 W80 48)
- Timmins** 123.55 126.7 (FISE) (N48 34 W81 23)
- Toronto / Buttonville** 123.55 (FISE) 126.7 (bcst) (N43 52 W79 22)
- Toronto / Lester B. Pearson Intl** 123.275 (FISE) (N43 42 W79 37)
- Wawa** 126.7 (FISE) (N47 58 W84 47)
- Warton** 126.7 (FISE) 296.6 (N44 45 W81 06)
- Windsor** 123.375 (FISE) 126.7 (bcst) (N42 17 W82 57)

LONDON / CHAPESKIE FIELD ON

CLC2

REF	N43 04 06 W81 07 32 3NE 9°W UTC-5(4) ELEV 930' A5000 F-21
OPR	Dr. H.H. Chapeskie 519-461-0764 Reg PPR
PF	B-1 C-2,3,4,5,6
FLT PLN	NOTAM FILE CYXU
FIC	London 866-WXBRIEF (Toll free within Canada) or 866-541-4104 (Toll free within Canada & USA)
RWY DATA	Rwy 07/25 2000x130 turf
RCR	Opr No win maint.
LIGHTING	07-(TE LO), 25-(TE LO) PNR
COMM	
TWR	London 119.4 236.6 (E) 1120-0345Z† at London A/D 2NM SW
MF	Sault rdo 119.4 0345-1120Z† 5NM centred on London A/D 2NM SW 3000 ASL (CAR 602.98)
PRO	Ctc London twr prior entering CZ.
CAUTION	Trees 250' fr thld rwy 25, 45 AGL. Trees adj to rwy, both sides, at thld of rwy 07. Possible deer on rwy.



CANADA FLIGHT SUPPLEMENT / GPH 205

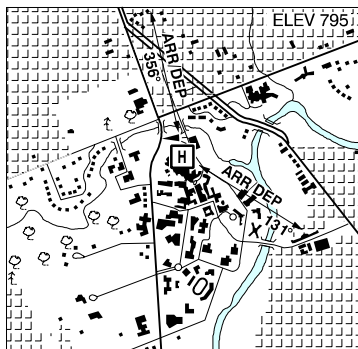
Effective 0901Z 20 November 2008 to 0901Z 15 January 2009

B516 AERODROME/FACILITY DIRECTORY

LONDON (UNIVERSITY HOSP) ON (Heli)

CPR4

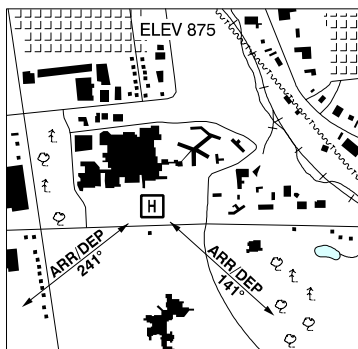
REF	N43 00 46 W81 16 23 Adj 9°W UTC-5(4) Elev 795' A5000
OPR	London University Hosp 519-685-8500 Cert PPR
FLT PLN	NOTAM FILE CYXU
FIC	London 519-452-4040 or London 866-WXBRIEF (Toll free within Canada) or 866-541-4104 (Toll free within Canada & USA)
PAD DATA	80' dia (50' concrete, 30' turf) 106' dia Rstd max heli length 53.3'
RCR	Opr
LIGHTING	DR RY(LO) RF(FL)
PRO	Two arr/dep paths brg 356° & 131° fr heli.



LONDON (VICTORIA HOSP) ON (Heli)

CPW2

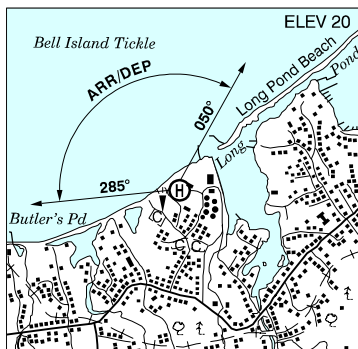
REF	N42 57 31 W81 13 33 Adj 9°W UTC-5(4) Elev 875' A5000
OPR	Victoria Hosp Corp 519-685-8500 Cert PPR
FLT PLN	NOTAM FILE CYXU
FIC	London 866-WXBRIEF (Toll free within Canada) or 866-541-4104 (Toll free within Canada & USA)
PAD DATA	86' dia asphalt 114' dia
LIGHTING	DR RY(LO) RF(FL)
COMM	Ambulance dispatch 129.275
PRO	Two arr/dep fit paths brg 141° & 241° fr heli.



LONG POND NL (Heli)

CCX2

REF	N47 30 58 W52 58 51 Adj 21°W UTC-31/2(21/2) Elev 20' A5012 RCAP
OPR	Cougar Helicopters Inc 709-758-4800 Reg PPR
FLT PLN	NOTAM FILE CYYT
FIC	Halifax 866-WXBRIEF or (French) 866-GOMÉTÉO (Toll free within Canada) or 866-541-4106 (Toll free within Canada & USA)
WX	709-834-8650 METAR 08-22Z‡ CWWU TAF 08-22Z‡ CWWU
PAD DATA	92' x 92' asphalt/gravel
RCR	Opr
LIGHTING	RY(LO) ARCAL-122.8 type K



CANADA FLIGHT SUPPLEMENT / GPH 205

Effective 0901Z 20 November 2008 to 0901Z 15 January 2009

AERODROME/FACILITY DIRECTORY B517

LONG POND NL (Heli) (Cont'd)

CX2

COMM	ATF tfc 123.2 5NM 3000 ASL
NAV	VOR/DME TORBAY YYT 113.5 Ch 82 N47 29 07 W52 51 08 (833') 314° 5.5NM to A/D
PRO	Arr/dep btwn 285°-050° fr heli.

LOON LAKE SK

CJW3

REF	N54 01 06 W109 08 07 Adj SE 15°E UTC-6 Elev 1790' A5015 E-16	
OPR	G. Taylor 306-837-2052 Reg	
PF	C-1,2,4,5	
FLT PLN	NOTAM FILE CYLL	
FIC	Edmonton 866-WXBRIEF (Toll free within Canada) or 866-541-4102 (Toll free within Canada & USA)	
RWY DATA	Rwy 10(105°)/28(285°) 2400x200 turf Rwy undulating RCR Opr Ltd win maint	
COMM	ATF tfc 123.2 5NM 4800 ASL	

LOON RIVER AB

CFS6

REF	N57 08 31 W115 04 31 20°E UTC-7(6) Elev 1550' aprx A5023 D-13	
OPR	Alberta Sustainable Resource Development, Forest Protection Division Slave Lake 780-849-7400 Reg	
FLT PLN	NOTAM FILE CYPE	
FIC	Edmonton 866-WXBRIEF (Toll free within Canada) or 866-541-4102 (Toll free within Canada & USA)	
ACC	Edmonton IFR 888-358-7526 or 780-890-8304/8305	
RWY DATA	Rwy 13/31 5900x100 asphalt Thld 13 displ 900' RCR Opr Ltd maint. No win maint	
COMM	ATF tfc 123.2 5NM 4600 ASL	
CAUTION	Water bomber activity at or in vic of A/D Apr thru Sep.	

LOUISE MUNI MB — See CRYSTAL CITY-PILOT MOUND / LOUISE MUNI

CANADA FLIGHT SUPPLEMENT / GPH 205

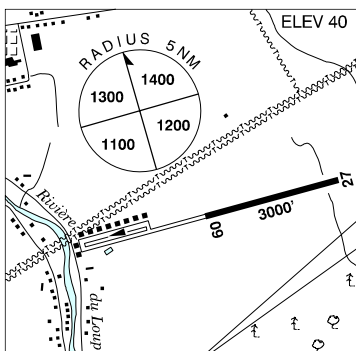
Effective 0901Z 20 November 2008 to 0901Z 15 January 2009

B518 AERODROME/FACILITY DIRECTORY

LOUISEVILLE QC

CSJ4

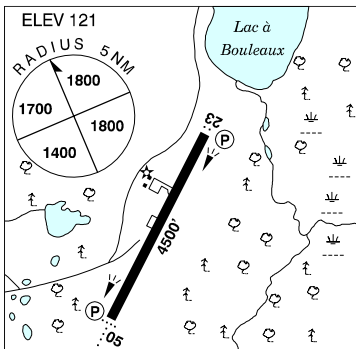
REF	N46 14 46 W72 54 16 1.5SE 16°W UTC-5(4) Elev 40' A5002 F-21
OPR	Jardins Ricard Inc 819-228-5393 Reg
PF	A-1 C-2,3,5
FLT PLN	(bil) NOTAM FILE CYQB Québec 866-GOMÉTÉO or 866-WXBRIEF (Toll free within Canada) or 866-541-4105 (Toll free within Canada & USA)
SERVICES	S 1,4,5
RWY DATA	Rwy 09/27 3000x75 asphalt RCR Opr Ltd win maint
COMM	(bil) ATF UNICOM ltd hrs O/T tfc 122.8 5NM 3100 ASL
CAUTION	OBST : P-lines unlgtd aprx 100 AGL 0.5NM final rwy 09. RWY : Large cracks on all sfc. Not suited for high performance acft. AIRSPACE : Acft flying at Trois-Rivières aprt (11.3NM NE of Louiseville A/D) on inst apch may overfly Louiseville A/D at 1600 ASL.



LOURDES-DE-BLANC-SABLON QC

CYBX

REF	N51 26 37 W57 11 07 2N 23°W UTC-4 Elev 121' A5011 E-19 F-22 LO7 HI1 HI6 CAP
OPR	TC 418-461-2514 12-21Z Cert
PF	B-1,2,6 C-3,4,5 ltd
FLT PLN	(bil) NOTAM FILE CYZV Québec 866-GOMÉTÉO or 866-WXBRIEF (Toll free within Canada) or 866-541-4105 (Toll free within Canada & USA) ACC Montréal 800-633-1353 WX LWIS (see COMM) METAR H24 TAF H24, issue times: 02, 08, 14, 20Z.
SERVICES	418-461-2806 or Page 418-461-3111 FUEL 100LL, JA-1 OIL All S 1 SUP FL D-ice
RWY DATA	Rwy 05(050°)/23(230°) 4500x150 asphalt Rwy 05 up 1.1% RCR aprt 418-461-2514/3064 12-21Z Mon-Fri O/T 3 hrs PNR PLR/PCN
LIGHTING	05-AD AS(TE ME) P1, 23-AS(TE ME) P1 ARCAL-122.0 type J
COMM	(bil) RCO Sept-Îles rdo 122.0 (RAAS) MF Sept-Îles rdo 122.0 15NM 3100 ASL (CAR 602.98) ATF Corridor outside MF zone, see Section C Quebec. LWIS (Wind & Altimeter) 128.15 (English) 124.35 (French)



CANADA FLIGHT SUPPLEMENT / GPH 205

Effective 0901Z 20 November 2008 to 0901Z 15 January 2009

AERODROME/FACILITY DIRECTORY B519

LOURDES-DE-BLANC-SABLON QC (Cont'd)

CYBX

NAV	NDB BLANC-SABLON BX 220 (M) N51 25 17 W57 12 11 050° 1.0NM to thld rwy 05 DME IBX 109.1 Ch 28 N51 26 57 W57 10 54 (122') at A/D LOC IBX 109.1 (Rwy 05-23)
CAUTION	Extv bird activity Jun-Sep.

LOURDES-DE-JOLIETTE QC

CSE3

REF	N46 06 34 W73 27 10 1N 16°W UTC-5(4) Elev 350' VTA A5002 F-21 HI5	
OPR	École De Parachutisme Voltige 2001 Inc 450-752-0385 Reg PPR	
PF	C-1,2,3,4,5,6	
FLT PLN	(bil) NOTAM FILE CYUL Québec 866-GOMÉTÉO or 866-WXBRIEF (Toll free within Canada) or 866-541-4105 (Toll free within Canada & USA)	
SERVICES	S 1	
RWY DATA	Rwy 04/22 2750x100 gravel/turf RCR Opr No win maint. Rwy sfc soft dur spring thaw.	
COMM	(bil) ATF tfc 123.5 5NM 3400 ASL	
NAV	NDB ST-FELIX-DE-VALOIS UFX 260 (L) N46 11 32 W73 25 08 211° 5.3NM to A/D	
CAUTION	Parachuting up to 14,500 ASL. A/D Joliette 4.5NM SW, tfc 123.5.	

LOWER EAST PUBNICO (LA FIELD) NS

CLE4

REF	N43 37 20 W65 45 44 1NE 18°W UTC-4(3) Elev 107' A5003 F-22	
OPR	Ronald Belliveau 902-762-3397/648-7812 Reg PNR	
FLT PLN	NOTAM FILE CYHZ Halifax 866-WXBRIEF or (French) 866-GOMÉTÉO (Toll free within Canada) or 866-541-4106 (Toll free within Canada & USA)	
RWY DATA	Rwy 10(101°)/28(281°) 2000x75 turf RCR Opr No win maint	
COMM	ATF tfc 123.2 5NM 3200 ASL	
CAUTION	P-line passing through apch 280' from thld rwy 10.	

CANADA FLIGHT SUPPLEMENT / GPH 205

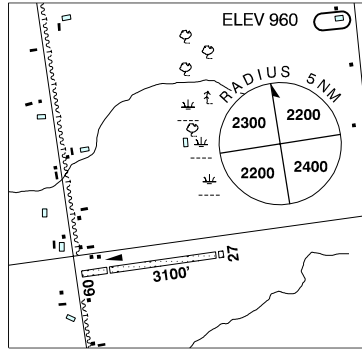
Effective 0901Z 20 November 2008 to 0901Z 15 January 2009

B520 AERODROME/FACILITY DIRECTORY

LUCAN ON

CPS4

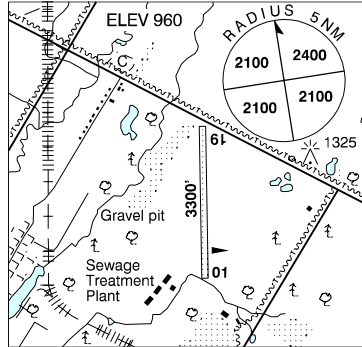
REF	N43 09 48 W81 24 45 2SW 9°W UTC-5(4) Elev 960' A5000 F-21
OPR	General Airspray Ltd 519-227-4091 Reg
PF	B-1 C-2,4,5 D-3,6
FLT PLN	NOTAM FILE CYXU London 866-WXBRIEF (Toll free within Canada) or 866-541-4104 (Toll free within Canada & USA)
SERVICES	S 5
RWY DATA	Rwy 09/27 3100x100 turf Thld 09 displ 550'. Thld 27 displ 100'. RCR Opr No win maint
LIGHTING	09-(TE LO), 27-(TE LO) PNR Opr
COMM	ATF tfc 123.2 5NM 4000 ASL



LUCKNOW AIRPARK ON

CLK3

REF	N43 58 04 W81 29 36 Adj E 9°W UTC-5(4) Elev 960' A5000 F-21
OPR	J.A. Porter Holdings (Lucknow) Ltd 519-528-3537 Reg PNR
PF	C-1,2,4,6 D-3,5
FLT PLN	NOTAM FILE CYGD London 866-WXBRIEF (Toll free within Canada) or 866-541-4104 (Toll free within Canada & USA)
RWY DATA	Rwy 01(008°)/19(188°) 3300x70 turf RCR Opr No win maint, soft in spring.
COMM	ATF tfc 123.0 5NM 4000 ASL
CAUTION	Slightly rising terrain & drainage ditch S of rwy. Marked pwr lines N of rwy. Twr 300 AGL 0.5NM NE.



CANADA FLIGHT SUPPLEMENT / GPH 205

Effective 0901Z 20 November 2008 to 0901Z 15 January 2009

AERODROME/FACILITY DIRECTORY B521

LUCKY LAKE SK

CKQ5

REF	N50 59 39 W107 07 53 Adj N 13°E UTC-6 Elev 2084' A5006 E-16 LO2	
OPR	Village 306-858-2234 Reg	
PF	B-1 C-2,4,5 D-6	
FLT PLN	NOTAM FILE CYYN	
FIC	Edmonton 866-WXBRIEF (Toll free within Canada) or 866-541-4102 (Toll free within Canada & USA)	
SERVICES		
FUEL	100LL	
OIL	All	
S	4,5	
RWY DATA	Rwy 08 (077°)/26(257°) 3012x75 asphalt	
RCR	Opr O/T 306-858-2917/7866 Ltd win maint	
LIGHTING	08-(TE LO), 26-(TE LO) ARCAL-123.2 type J	
COMM		
ATF	tfc 123.2 5NM 5100 ASL	
PRO	Rgt hand circuits rwy 26 (CAR 602.96)	

LUMSDEN (COLHOUN) SK

CKH8

REF	N50 40 03 W104 47 22 3.5NE 11°E UTC-6 Elev 1900' A5006 E-16 LO2 HI3 HI4	
OPR	Lumsden Aero Ltd 306-536-5055 306-731-2870 Reg PPR	
PF	B-1 D-2,3,4,5,6	
FLT PLN	NOTAM FILE CYQR	
FIC	Edmonton 866-WXBRIEF (Toll free within Canada) or 866-541-4102 (Toll free within Canada & USA)	
SERVICES	PPR for svcg	
FUEL	100LL, JB	
RWY DATA	Rwy 15(148°)/33(328°) 3700x30 turf	
RCR	Opr Soft when wet. Ltd win maint.	
COMM		
ATF	Lumsden Colhoun tfc 123.2 5NM 4900 ASL	
NAV		
VORTAC	LUMSDEN VLN 114.2 Ch 89 N50 40 01 W104 53 23 (1895°) 080° 3.8NM to A/D	
CAUTION	Road crosses rwy, watch for vehicular tfc.	

CANADA FLIGHT SUPPLEMENT / GPH 205

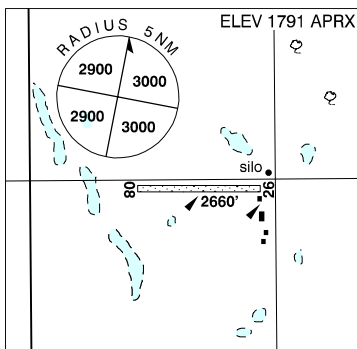
Effective 0901Z 20 November 2008 to 0901Z 15 January 2009

B522 AERODROME/FACILITY DIRECTORY

LUMSDEN (METZ) SK

CKR5

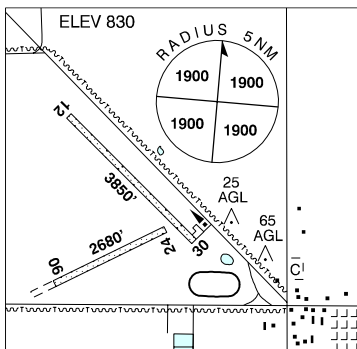
REF	N50 43 02 W104 58 10 6NW 11°E UTC-6 Elev 1791' aprx A5006 E-16
OPR	Metz Aero Svcs Inc 306-731-2800 Reg PPR
PF	B-1
FLT PLN	NOTAM FILE CYQR FIC Edmonton 866-WXBRIEF (Toll free within Canada) or 866-541-4102 (Toll free within Canada & USA)
RWY DATA	Rwy 08(079°)/26(259°) 2660x65 turf/earth RCR Opr Ltd win maint
COMM	ATF Lumsden Metz tfc 123.2 5NM 4900 ASL
CAUTION	Trees & hg adj to S edge of rwy for first 400' rwy 26. Fence along S side of rwy. Sfc unprepared outside of rwy edges. Regina Beach A/D, tfc 123.2 aprx 2NM NW. Lgtd tower 1930 ASL (130 AGL) 1.2NM E of A/D.



LUNDAR MB

CKR4

REF	N50 42 12 W98 03 24 1NW 5°E UTC-6(5) Elev 830' A5007 E-16 E-17
OPR	Lundar Flying Club 204-762-5661 Reg
PF	A-1 C-2,4,5
FLT PLN	NOTAM FILE CYDN FIC Winnipeg 866-WXBRIEF (Toll free within Canada) or 866-541-4103 (Toll free within Canada & USA)
SERVICES	For svcg 204-762-5661/5516
FUEL	100LL
OIL	80
RWY DATA	Rwy 12(125°)/30(305°) 3850x84 turf Rwy 06(059°)/24(239°) 2680x75 turf RCR Opr Ltd win maint, soft when wet.
LIGHTING	12-(LO), 30-(LO) ARCAL-123.2 type J
COMM	ATF tfc 123.2 5NM 3900 ASL
CAUTION	P-lines in vic.



CANADA FLIGHT SUPPLEMENT / GPH 205

Effective 0901Z 20 November 2008 to 0901Z 15 January 2009

AERODROME/FACILITY DIRECTORY B523

LUSELAND SK

CJR2

REF	N52 04 12 W109 22 28 Adj SE 15°E UTC-6 Elev 2300' A5006 A5015 E-16 LO2	
OPR	Town 306-372-4218 Fax 306-372-4700 Reg	
PF	B-1 C-2,3,5	
FLT PLN FIC	NOTAM FILE CYYN Edmonton 866-WXBRIEF (Toll free within Canada) or 866-541-4102 (Toll free within Canada & USA)	
SERVICE S	PNR, for svcg ctc opr 15-23Z Mon-Fri 4,5,6	
RWY DATA RCR	Rwy 10(106°)/28(286°) 3000x75 asphalt Rwy 10 slopes down. Opr Ltd win maint	
LIGHTING	10-(TE LO), 28-(TE LO) ARCAL-123.2 type J	
COMM ATF	tfc 123.2 5NM 5300 ASL	
PRO	Rgt hand circuits rwy 10 (CAR 602.96).	

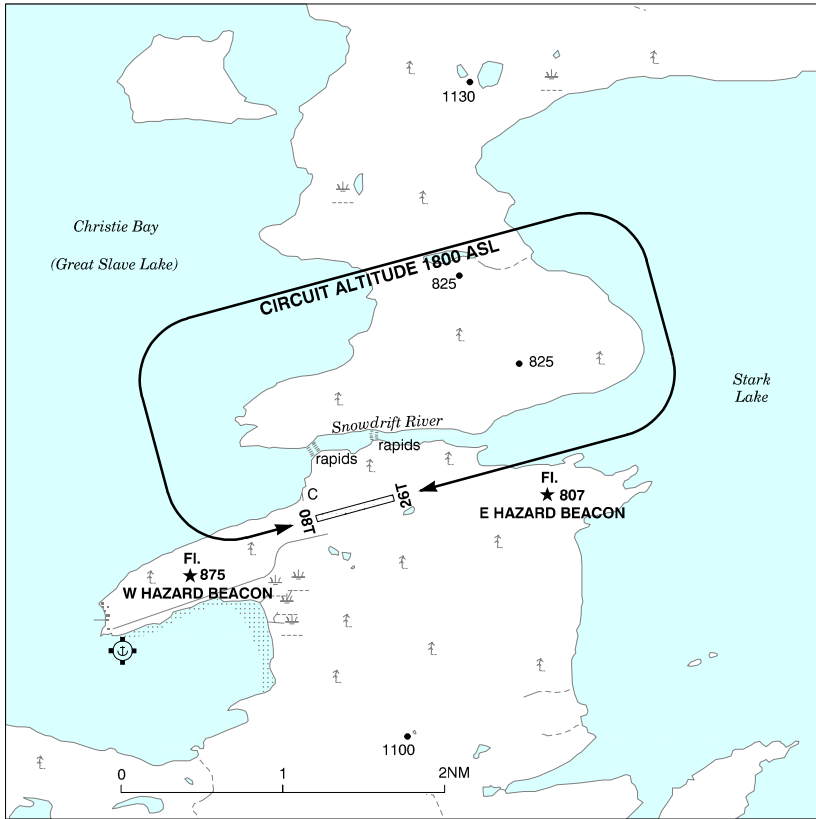
LUTHER FIELD ON — See GRAND VALLEY / LUTHER FIELD

CANADA FLIGHT SUPPLEMENT / GPH 205

Effective 0901Z 20 November 2008 to 0901Z 15 January 2009

B524 AERODROME/FACILITY DIRECTORY

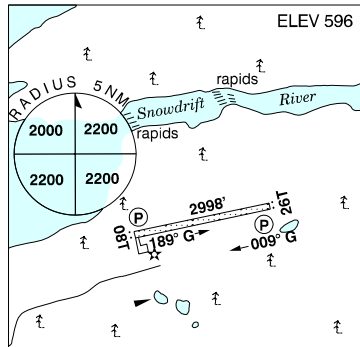
LUTSELK'E VFR TERMINAL PROCEDURES CHART



LUTSELK'E NT

CYLK

REF	N62 25 06 W110 40 56 1.1NE 20°E GV131°E UTC-7(6) Elev 596' A5030 D-13 LO5 CAP
OPR	Govt of Northwest Territories (Fort Smith) 867-873-4680 Lutselk'e Dene Council 867-370-3051 Emerg/Incident rpt ctc Govt of Northwest Territories 867-445-5518 or 877-989-1400 Cert
PF	C-1,2,4,5
FLT PLN	NOTAM FILE CYZF
FIG	North Bay 866-WXBRIEF (Toll free within Canada) or 866-541-4109 (Toll free within Canada & USA)
ACC	Edmonton IFR 888-358-7526 or 780-890-8304/8305
CARS	867-370-3826 Ltd hrs (see COMM)
WX	METAR dur CARS hrs ops



CANADA FLIGHT SUPPLEMENT / GPH 205

Effective 0901Z 20 November 2008 to 0901Z 15 January 2009

AERODROME/FACILITY DIRECTORY B525

LUTSELK'E NT (Cont'd)

CYLK

RWY DATA	Rwy 08T(078°T)/26T(258°T) 2998x100 gravel Rwy 08T up 0.65% to mid-point. Rwy 26T up 0.96% to mid-point.
RCR	Settlement Maint avbl 16-01Z† Mon-Fri, 18-22Z† Sun, incl statutory hols. O/T 1 hr PNR ctc 867-872-0207. Call out chg may be levied.
LIGHTING	08T-AS (TE ME) AP, 26T-AS (TE ME) AP ARCAL-122.1 type K, APAPI avbl only dur CARS hrs ops. Ngt ops not recommended unless hazard beacons oprg.
COMM	
MF	aprt rdo ltd hrs O/T tfc 122.1 5NM 3600 ASL (CAR 602.98)
APRT RDO	122.1 (V) 15-01Z† Sun-Fri, 16-21Z† Sat (including stat hols)
PRO	Circuit alt 1800 ASL. Rgt hand circuits rwy 26T (CAR 602.96); pilots to extend downwind so that base leg is flown over Stark Lake as depicted on VTPC. PPR fr APM before "Hot Refuelling" procedures may be used.
CAUTION	Only pilots familiar with lcl terrain should use aprt at ngt. Caribou may be on or in vic of rwy. Water A/D 2.4NM SW.

LYNCREST MB — See WINNIPEG / LYNCREST

LYNN LAKE MB

CYYL

REF	N56 51 50 W101 04 34 Adj NW 8°E UTC-6(5) Elev 1170' A5024 D-13 LO1 LO3 HI2 HI4 CAP
OPR	District of Lynn Lake 204-356-2418 Cert
PF	A-1,6 C-2,3,4,5
FLT PLN	NOTAM FILE CYYL
FIC	Winnipeg 866-WXBRIEF (Toll free within Canada) or 866-541-4103 (Toll free within Canada & USA)
WX	Legacy AWOS TAF H24, issue times: 01, 07, 13, 19Z.
SERVICES	After hr svcs, call out chg will be levied, expect 1 hr delay.
FUEL	100LL, JA-1 13-22Z, Mon-Sat Jun-Aug; 14-23Z† Mon-Fri, Sep-May exc hols; O/T 204-356-2900
OIL	All
RWY DATA	Rwy 17(172°)/35(352°) 5000x150 asphalt Rwy 08(079°)/26(259°) 2520x80 gravel/asphalt. Rwy 26 up 0.32%.
RCR	APM 204-356-2900 CRFI Ltd win maint rwy 08/26. Frost heaves dur spring thaw rwy 17/35. PLR/PCN
LIGHTING	17-AS(TE ME) P1, 35-AO(TE ME) P1 ARCAL-122.3 type K
COMM	
RCO	Winnipeg rdo 123.475 (FISE) 126.7 (FISE)
MF	tfc 122.3 (no ground station) 5NM 4200 ASL (CAR 602.98)
PAL	Winnipeg Ctr 135.05
NAV	
NDB	YL 395 (M) N56 49 51 W101 04 13 349° 1.6NM to thld 35
VOR/DME	YYL 112.6 Ch 73 N56 51 51 W101 04 31 (1219') at A/D
CAUTION	Blasting 1NM radius N56 54 W100 26 (aprx 23NM ENE of A/D). Max alt 4200 ASL. Frost heaves first 1200' rwy 17 Nov-Apr.

