

CANADA FLIGHT SUPPLEMENT / GPH 205

Effective 0901Z 20 November 2008 to 0901Z 15 January 2009

B424 AERODROME/FACILITY DIRECTORY

JACK PINE RESORT LTD MB — See PINE DOCK/JACK PINE RESORT LTD

JAMES ARMSTRONG RICHARDSON INTL MB See WINNIPEG/JAMES ARMSTRONG RICHARDSON INTL

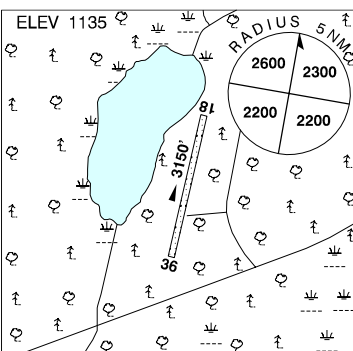
JAMES GRUBEN NT See TUKTOYAKTUK / JAMES GRUBEN

JAMES T. FIELD MEMORIAL ON — See CENTRALIA/JAMES T. FIELD MEMORIAL

JAN LAKE SK

CKM4

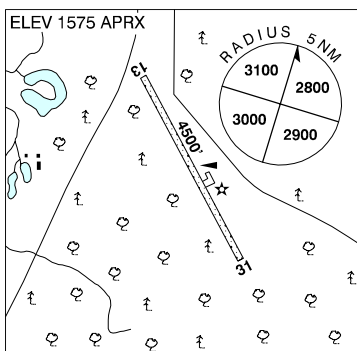
REF	N54 49 51 W102 47 19 6S 10°E UTC-6(5) Elev 1135' A5016 E-16
OPR	Jan Lake Community Association Inc 306-632-2215 or 306-731-2221 Reg
FLT PLN	NOTAM FILE CYVC
FIC	Edmonton 866-WXBRIEF (Toll free within Canada) or 866-541-4102 (Toll free within Canada & USA)
RWY DATA	Rwy 18(183°)/36(003°) 3150x50 gravel/sand Rwy 36 slopes down.
RCR	Opr No win maint
COMM	
ATF	tfc 122.8 5NM 4200 ASL
CAUTION	Trees within 50' of rwy centreline on both sides.



JANVIER AB

CEP5

REF	N55 54 W110 44 17°E UTC-7(6) Elev 1575' aprx A5015 E-16
OPR	Muni of Wood Buffalo 780-743-7859 Reg
FLT PLN	NOTAM FILE CYMM
FIC	Edmonton 866-WXBRIEF (Toll free within Canada) or 866-541-4102 (Toll free within Canada & USA)
RWY DATA	Rwy 13(135°)/31(315°) 4500x100 gravel
RCR	Opr Ltd win maint
COMM	
ATF	tfc 123.2 5NM 4600 ASL



CANADA FLIGHT SUPPLEMENT / GPH 205

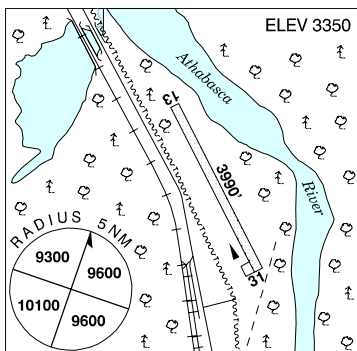
Effective 0901Z 20 November 2008 to 0901Z 15 January 2009

AERODROME/FACILITY DIRECTORY B425

JASPER AB

CYJA

REF	N52 59 48 W118 03 34 7.2N 19°E UTC-7(6) Elev 3350' A5014 E-15
OPR	Supt, Jasper National Park 780-852-6155 Reg PPR
PF	B-1 D-2,3,4,5,6
FLT PLN	NOTAM FILE CYJA
FIC	Edmonton 866-WXBRIEF (Toll free within Canada) or 866-541-4102 (Toll free within Canada & USA)
ACC	Edmonton IFR 888-358-7526 or 780-890-8304/8305
RWY DATA	Rwy 13(134°)/31(314°) 3990x150 turf
RCR	Opr Sfc ruf due to grass tufting. Rstd to acct 12,500 lbs or less.
COMM	
RCO	Edmonton rdo 123.55 (FISE)
ATF	tfc 123.2 5NM 6400 ASL
PRO	A/D to be used for emerg/diversions or by written approval fr Chief Park Warden or Superintendent Jasper National Park.
CAUTION	Elk may be on rwy.

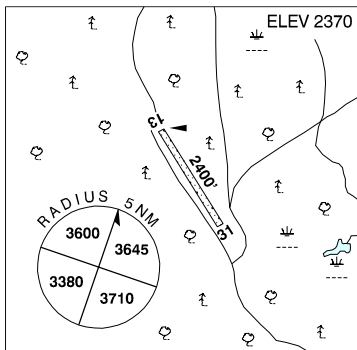


JASPER-HINTON AB — See HINTON / JASPER-HINTON

JEAN LAKE AB

CFF3

REF	N57 29 W113 53 19°E UTC-7(6) Elev 2370' A5023 D-13
OPR	Alberta Lands & Forest Svc Fort McMurray 780-743-7120 Reg
FLT PLN	NOTAM FILE CYMM
FIC	Edmonton 866-WXBRIEF (Toll free within Canada) or 866-541-4102 (Toll free within Canada & USA)
RWY DATA	Rwy 13(131°)/31(311°) 2400x100 turf
RCR	Opr Ltd maint. No win maint.
COMM	
ATF	tfc 123.2 5NM 5400 ASL



JEAN LESAGE INTL QC — See QUÉBEC / JEAN LESAGE INTL

CANADA FLIGHT SUPPLEMENT / GPH 205

Effective 0901Z 20 November 2008 to 0901Z 15 January 2009

B426 AERODROME/FACILITY DIRECTORY

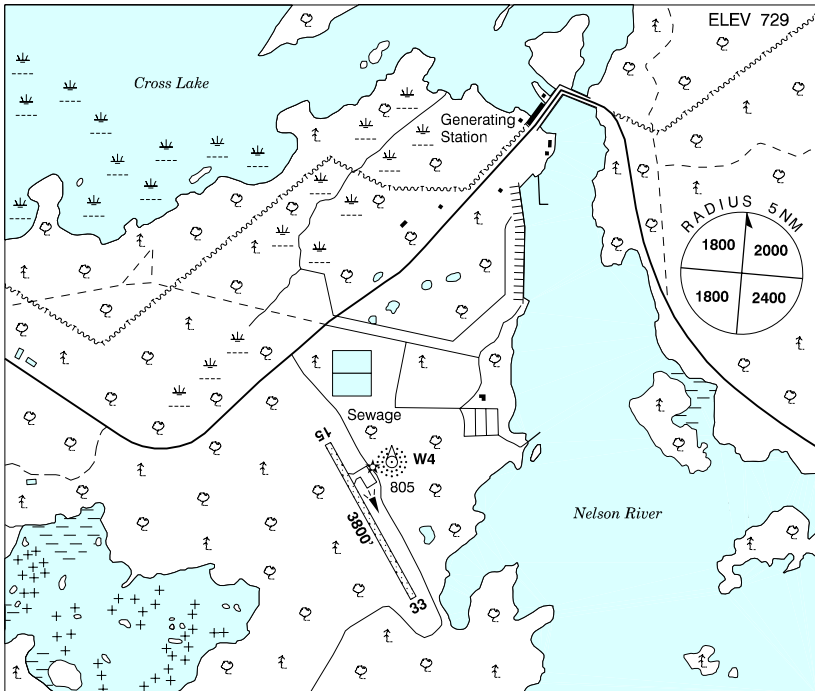
JEAN MARIE RIVER NT

CET9

REF	N61 31 21 W120 37 30 Adj 25°E UTC-7(6) Elev 470' A5029 D-13	
OPR	Govt of Northwest Territories (Fort Simpson) 867-695-2471 Settlement 867-809-2000 Emerg/Incident rpt ctc Govt of Northwest Territories 877-989-1400 Reg	
FLT PLN	NOTAM FILE CYFS	
FIG	North Bay 866-WXBRIEF (Toll free within Canada) or 866-541-4109 (Toll free within Canada & USA)	
RWY DATA	Rwy 10(105°)/28(285°) 2510x60 gravel & clay Rwy 10 up 0.43% first 1250'	
RCR	Settlement win maint 17-21Z± Mon-Fri exc hols, O/T 2 hrs PNR, ctc Regional APM 867-695-2491. Call out chg may be levied.	
COMM	tfc 123.2 5NM 3500 ASL	
CAUTION	1200' of loose sand prior to thld 10.	

JENPEG MB

CZJG



CANADA FLIGHT SUPPLEMENT / GPH 205

Effective 0901Z 20 November 2008 to 0901Z 15 January 2009

AERODROME/FACILITY DIRECTORY B427

JENPEG MB (Cont'd)

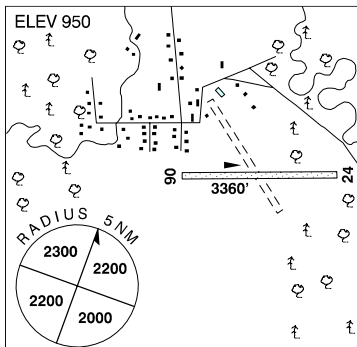
CZJG

REF	N54 31 08 W98 02 46 1.6SW 5°E UTC-6(5) Elev 729' A5016 E-16 E-17 LO3 RCAP
OPR	Manitoba Hydro 204-833-1121 Cert PNR
FLT PLN	NOTAM FILE CYIV
FIC	Winnipeg 866-WXBRIEF (Toll free within Canada) or 866-541-4103 (Toll free within Canada & USA)
RWY DATA	Rwy 15(147°)/33(327°) 3800x100 gravel
RCR	Opr Ltd win maint
LIGHTING	15-(TE LO), 33-(TE LO) ARCAL-122.8 type J (see CAUTION)
COMM	
ATF	UNICOM ltd hrs O/T tfc 122.8 5NM 3800 ASL
NAV	
NDB	W4 323 (M) N54 31 12 W98 02 36 at A/D Pvt Unmonitored
CAUTION	Rwy edge lgt installed higher than std (aprx 26 inches high loc 6' outside rwy edge).

JOHN D'OR PRAIRIE AB

CFG5

REF	N58 29 29 W115 08 18 Adj 20°E UTC-7(6) Elev 950' A5023 D-13
OPR	Little Red Air Svc 780-927-4630 Reg PPR Ldg fees
FLT PLN	NOTAM FILE CYOJ
FIC	Edmonton 866-WXBRIEF (Toll free within Canada) or 866-541-4102 (Toll free within Canada & USA)
ACC	Edmonton IFR 888-358-7526 or 780-890-8304/8305
RWY DATA	Rwy 06(067°)/24(247°) 3360x90 turf
RCR	Opr Ltd maint
COMM	
ATF	tfc 123.2 5NM 4000 ASL

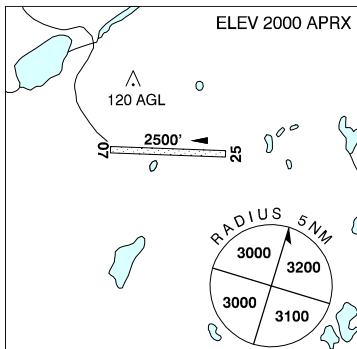


JOHN G. DIEFENBAKER INTL SK — See SASKATOON / JOHN G. DIEFENBAKER INTL

JOHNSON LAKE AB

CFJ9

REF	N57 34 W110 19 17°E UTC-7(6) Elev 2000' aprx A5023 D-13
OPR	Alberta Sustainable Resource Development, Forest Protection Division Fort McMurray 780-743-7125 Reg
FLT PLN	NOTAM FILE CYMM
FIC	Edmonton 866-WXBRIEF (Toll free within Canada) or 866-541-4102 (Toll free within Canada & USA)
RWY DATA	Rwy 07(075°)/25(255°) 2500x75 turf
RCR	Opr Ltd maint. No win maint. Sfc ruf.
COMM	
ATF	tfc 123.2 5NM 5000 ASL



CANADA FLIGHT SUPPLEMENT / GPH 205

Effective 0901Z 20 November 2008 to 0901Z 15 January 2009

B428 AERODROME/FACILITY DIRECTORY

JOLIETTE QC

CSG3

REF	N46 02 42 W73 30 06 2.2NW 16°W UTC-5(4) Elev 225' VTA A5002 F-21 LO6 LO7 LO8	
OPR	Aero-Club de Joliette Inc 450-755-4211 Reg	
PF	A-1 C-2,3,4,5,6	
FLT PLN	(bil) NOTAM FILE CYUL Québec 866-GOMÉTÉO or 866-WXBRIEF (Toll free within Canada) or 866-541-4105 (Toll free within Canada & USA)	
ACC	Montréal 800-633-1353	
SERVICES		
FUEL	100LL 12-20Z‡ Mon-Fri	
S	1,4,5,6	
RWY DATA	Rwy 15/33 3250x75 asphalt	
RCR	Opr Ltd win maint	
LIGHTING	15-(TE ME), 33-(TE ME) ARCAL-123.5 type J	
COMM		
ATF	tfc 123.5 5NM 3300 ASL	
CAUTION	A/D Lourdes-de-Joliette 4.5NM NE, tfc 123.5. Possibility of NORDO ultra-light tfc in the circuit. Lgt dwr 511 ASL (210 AGL) 1NM NE of A/D.	

JOSEPHBURG AB — See EDMONTON / JOSEPHBURG

JUNIPER NB

CCE3

REF	N46 33 46 W67 10 06 2.5NE 19°W UTC-4(3) Elev 837' A5003 F-22 RCAP	
OPR	J.D. Irving Woodlands 506-632-7777 Reg PPR	
PF	C-1 D-2,4,5	
FLT PLN	NOTAM FILE CYFC Halifax 866-WXBRIEF or (French) 866-GOMÉTÉO (Toll free within Canada) or 866-541-4106 (Toll free within Canada & USA)	
ACC	Moncton 506-867-7176 or 866-480-8200 Fit Plns by Fax 506-867-7180 & include phone numbers where pilot can be reached prior to dep	
RWY DATA	Rwy 02(016°)/20(196°) 4021x53 asphalt	
RCR	Opr Maint dur May-Oct. No win maint.	
COMM		
ATF	tfc 123.2 5NM 3900 ASL	
CAUTION	Water bombing tng over A/D. Hi trees on apch to rwy 02.	