

CANADA FLIGHT SUPPLEMENT / GPH 205

Effective 0901Z 20 November 2008 to 0901Z 15 January 2009

B406 AERODROME/FACILITY DIRECTORY

IGLOOLIK NU

CYGT

REF	N69 21 53 W81 48 58 37°W GV45°E UTC-5(4) Elev 174' A5043 C-11 C-12 LO5 HI1 HI2 CAP	
OPR	Govt of Nunavut 867-897-3606 Cert	
PF	B-1 dur CARS hrs C-5	
FLT PLN	NOTAM FILE CYGT	
FIC	North Bay 866-WXBRIEF (Toll free within Canada) or 866-541-4109 (Toll free within Canada & USA)	
ACC	Edmonton IFR 888-358-7526 or 780-890-8304/8305	
CARS	867-934-8947 Ltd hrs (see COMM) Lcl wx only other wx O/R.	
WX	METAR dur CARS hrs (see COMM).	
SERVICES	Call out chg may be levied outside oprg hrs.	
FUEL	JA-1 14-23Z± Mon-Wed & Sat; 14-02Z± Thu & Fri exc hols, O/T call out chg PNR 867-934-8958/8938/8947. Credit cards not accepted. Credit by prior arng only, ctc 867-645-5169/5187, allow 7 working days.	
RWY DATA	Rwy 15T(145°T)/33T(325°T) 3800x100 gravel Rwy 33°T up 0.5%	
RCR	Opr Ltd win maint. PLR/PCN	
LIGHTING	15T-AS(TE ME) AP, 33T-AS(TE ME) AP ARCAL-122.1 type K opr outside CARS hrs. (See CAUTION).	
COMM		
MF	aprt rdo ltd hrs O/T tfc 122.1 5NM 3200 ASL (CAR 602.98)	
APRT RDO	122.1 (V) 10-20Z± Mon, 14-24Z± Tue, 13-22Z± Wed & Sat, 10-19Z± Thu & Sun, 15-24Z± Fri, exc federal observed hols.	
NAV		
NDB	YGT 241 (M) N69 22 17 W81 49 07 173°T 0.4NM to A/D	
CAUTION	Rwy edge lgt installed higher than std (aprx 27 inches high loc 5' outside rwy edge).	

IGNACE ON (Heli)

CJN3

REF	N49 24 23 W91 38 05 1E 1°W UTC-6 Elev 1500' aprx A5001 A5008	
OPR	Ontario Min of Natural Resources 807-934-2233 Cert PPR	
PF	B-1 C-2,3,5	
FLT PLN	NOTAM FILE CYHD	
FIC	Winnipeg 866-WXBRIEF (Toll free within Canada) or 866-541-4103 (Toll free within Canada & USA)	
SERVICES		
PVT ADV	Fire Base 122.9	
PAD DATA	40' x 40' concrete Rstd max heli length 57.3'	
RCR	Opr	
COMM		
ATF	tfc 122.8 5NM 4500 ASL	

CANADA FLIGHT SUPPLEMENT / GPH 205

Effective 0901Z 20 November 2008 to 0901Z 15 January 2009

AERODROME/FACILITY DIRECTORY B407

IGNACE ON (Heli) (Cont'd)

CJN3

PRO	For Easterly dep, taxi to W end of clearing.
CAUTION	Numerous comm twr vic, see A/D sketch.

IGNACE MUNI ON

CZUC

REF	N49 25 47 W91 43 04 2.5NM 1°W UTC-6 Elev 1435' A5001 A5008 E-17 LO4	
OPR	Township 807-934-2202 Reg	
PF	B-1 C-2,3,4,5,6	
FLT PLN FIC	NOTAM FILE CYHD Winnipeg 866-WXBRIEF (Toll free within Canada) or 866-541-4103 (Toll free within Canada & USA)	
SERVICES S	Ctc opr 4,6	
RWY DATA RCR	Rwy 05/23 3512x75 asphalt Opr No win maint Oct 01-May 15	
LIGHTING	05-(TE LO), 23-(TE LO) O/R thru opr 14-2230Z Mon-Fri, 30 min PNR	
COMM ATF	tfc 122.8 5NM 4500 ASL	
NAV NDB	ZUC 230 (MH) N49 26 02 W91 43 35 127° 0.4NM to A/D Unmonitored	

ÎLE-À-LA-CROSSE SK

CJF3

REF	N55 29 23 W107 55 48 3N 14°E UTC-6 Elev 1394' A5015 E-16 LO1 RCAP	
OPR	Ministry of Hwys & Infrastructure 306-953-3263 Reg	
PF	C-1,2,4,5	
FLT PLN FIC	NOTAM FILE CYSF Edmonton 866-WXBRIEF (Toll free within Canada) or 866-541-4102 (Toll free within Canada & USA)	
RWY DATA RCR	Rwy 14(145°)/32(325°) 3900x75 treated gravel Area office 306-235-1730 or Opr Ltd win maint	
LIGHTING	14-(TE LO) P1 3.5°, 32-(TE LO) P13.0° ARCAL-123.2 type K Three ints settings avbl for P1 only	
COMM ATF	tfc 123.2 5NM 4400 ASL	
NAV NDB	3F 384 (L) N55 29 02 W107 55 51 at A/D Pvt Unmonitored	
CAUTION	Extv bird activity Apr-Oct.	

CANADA FLIGHT SUPPLEMENT / GPH 205

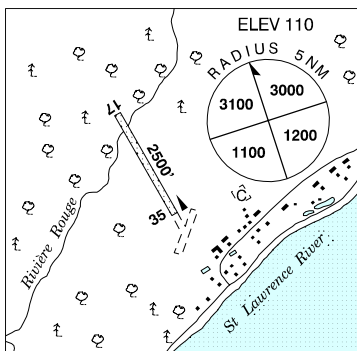
Effective 0901Z 20 November 2008 to 0901Z 15 January 2009

B408 AERODROME/FACILITY DIRECTORY

ÎLE AUX COUDRES QC

CTA3

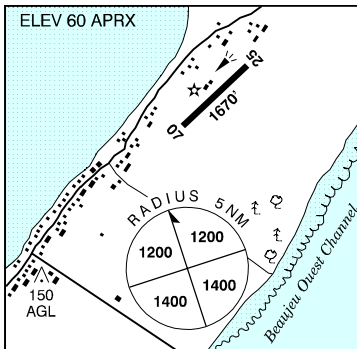
REF	N47 23 22 W70 23 04 1.3SW 18°W UTC-5(4) Elev 110' A5002
OPR	M. Desgagnes 418-438-2247 Reg
PF	A-1 C-2,4,5
FLT PLN FIC	(bil) NOTAM FILE CYQB Québec 866-GOMÉTÉO or 866-WXBRIEF (Toll free within Canada) or 866-541-4105 (Toll free within Canada & USA)
SERVICES S	1,4,6
RWY DATA RCR	Rwy 17/35 2500x40 turf/gravel Opr No win maint
COMM ATF	UNICOM ltd hrs O/T ftc 122.7 5NM 3200 ASL
CAUTION	Rwy across ditch 320' fr thld 17.



ÎLE-AUX-GRUES QC

CSH2

REF	N47 04 16 W70 31 58 0.5NE 18°W UTC-5(4) Elev 60' aprx A5002 F-19
OPR	Govt of Quebec 418-248-3545/598-3318 Cert
PF	C-1 D-(ltd)3,5,6
FLT PLN FIC	(bil) NOTAM FILE CYQB Québec 866-GOMÉTÉO or 866-WXBRIEF (Toll free within Canada) or 866-541-4105 (Toll free within Canada & USA)
RWY DATA RCR	Rwy 07/25 1670x75 asphalt Air Montmagny 418-248-3545
LIGHTING	07-(TE ME), 25-(TE ME) ARCAL-122.8 type K
COMM ATF	Montmagny UNICOM ltd hrs O/T ftc 122.8 5NM 3100 ASL
PRO	Rgt hand circuits rwy 07 (CAR 602.96).
CAUTION	Extv bird activity May-Oct. Silo 1000' fr thld 25 & 500' rgt of extended centreline of rwy, 90 AGL, 150 MSL, not lighted.



CANADA FLIGHT SUPPLEMENT / GPH 205

Effective 0901Z 20 November 2008 to 0901Z 15 January 2009

AERODROME/FACILITY DIRECTORY B409

ÎLES-DE-LA-MADELEINE QC

CYGR

REF	N47 25 29 W61 46 41 1.7NE 21°W UTC-4(3) Elev 35' A5003 F-22 LO8 HI6 CAP	
OPR	TC 418-986-3785 Cert	
PF	A-1,6 C-2,3,4,5	
CUST	AOE/15 888-226-7277 13-2130Z‡ Mon-Fri exc hols	
FLT PLN	(bil) NOTAM FILE CYGR Québec 866-GOMÉTÉO or 866-WXBRIEF (Toll free within Canada) or 866-541-4105 (Toll free within Canada & USA)	
ACC	Montréal 800-633-1353	
WX	METAR 10-03Z‡.	
PIK	TAF 12-03Z‡, issue times: 12, 14, 20Z (DT 11, 14, 20Z). ATB, airside access	
SERVICES		
FUEL	JA-1 12-21Z‡ Mon-Fri exc hols 418-986-2135 Page 418-937-3027 O/T call out chg	
S	4,5,6	
SUP FL	D-ice	
JASU	CE-16	
RWY DATA	Rwy 07(074°)/25(254°) 4500x150 asphalt Rwy 25 up 0.75% first 700' Rwy 16(157°)/34(337°) 3600x150 asphalt Rwy 16 up 0.7%	
RCR	Opr Win maint 10-03Z‡ Mon-Fri O/T 3 hrs PNR. CRFI 1 hr PNR, PLR/PCN	
LIGHTING	07-AD AS(TE ME) P2, 16-(TE ME), 25-AS(TE ME) P2, 34-(TE ME) ARCAL 123.15 type K	
COMM	(bil)	
RADIO	Madeleine rdo 123.15 (E) 10-0330Z‡ (emerg only 418-969-4332)	
RCO	Mont-Joli rdo 123.15 (RAAS) 0330-10Z‡ Quebec rdo 126.7 (FISE)	
MF	rdo 10-0330Z‡ O/T Mont-Joli 123.15 25NM 3000 ASL (CAR 602.98)	
PAL	(Grindstone) Moncton Ctr 134.35	
NAV		
VOT	111.8	
NDB	GRINDSTONE GR 370 (L) N47 22 30 W61 54 26 082° 5.6NM to thld rwy 07	
VOR/DME	GRINDSTONE YGR 112.0 Ch 57 N47 25 49 W61 46 27 (63') at A/D	
LOC	IGR 109.9 (Rwy 07/25)	
PRO	Acft opr Northbound/Southbound on V382 btwn CYGR/CYGP may remain on FSS freq if requesting IFR ATC messages in french.	

CANADA FLIGHT SUPPLEMENT / GPH 205

Effective 0901Z 20 November 2008 to 0901Z 15 January 2009

B410 AERODROME/FACILITY DIRECTORY

ILFORD MB

CZBD

REF	N56 03 41 W95 36 50 1.5 SSW 2°E UTC-6(5) Elev 642' A5016 A5024 D-14 E-16 E-17 LO3	
OPR	Govt of Manitoba 204-677-6722 Cert	
PF	A-1 C-2,4,5 Tml bldg opr 13-18Z±, 19-2115Z± Mon-Fri, clsd Sat, Sun & hols	
FLT PLN	NOTAM FILE CYIV	
FIG	Winnipeg 866-WXBRIEF (Toll free within Canada) or 866-541-4103 (Toll free within Canada & USA)	
RWY DATA	Rwy 09(089°)/27(269°) 3000x75 crushed rock	
RCR	APM 204-288-4325 13-18Z±, 19-2115Z± Mon-Fri exc hols O/T 204-288-4321	
LIGHTING	09-(TE LO), 27-(TE LO) ARCAL-122.8 type J (see CAUTION)	
COMM		
ATF	UNICOM ltd hrs O/T tfc 122.8 5NM 3700 ASL	
CAUTION	Rwy edge lgt installed higher than std (aprx 27 inches high loc 5' outside rwy edge).	

IMPERIAL SK

CKU5

REF	N51 21 W105 24 2E 12°E UTC-6 Elev 1665' A5006 E-16	
OPR	Town 306-963-2220 Reg	
PF	C-1,2,4,5	
FLT PLN	NOTAM FILE CYXE	
FIG	Edmonton 866-WXBRIEF (Toll free within Canada) or 866-541-4102 (Toll free within Canada & USA)	
RWY DATA	Rwy 17(168°)/35(348°) 2300x75 turf Opr No win maint	
RCR		
COMM		
ATF	tfc 123.2 5NM 4700 ASL	

CANADA FLIGHT SUPPLEMENT / GPH 205

Effective 0901Z 20 November 2008 to 0901Z 15 January 2009

AERODROME/FACILITY DIRECTORY B411

INDUS / WINTERS AIRE PARK AB

CFY4

REF	N50 54 W113 47 1SW 17°E UTC-7(6) Elev 3370' VTA A5005 E-15 E-16		ELEV 3370
OPR	Blue Yonder Avn 403-936-5767 Reg PPR		
PF	B-1 D-2,3,4,5,6		
FLT PLN	NOTAM FILE CYBW		
FIC	Edmonton 866-WXBRIEF (Toll free within Canada) or 866-541-4102 (Toll free within Canada & USA)		
ACC	Edmonton IFR 888-358-7526 or 780-890-8304/8305		
SERVICES	MG-1		
FUEL	1,2		
S			
RWY DATA	Rwy 09(094°)/27(274°) 2600x75 turf Rwy 16(163°)/34(343°) 2600x75 turf		
RCR	Opr Ltd maint, sfc ruf.		
COMM			
ATF	tfc 123.2 5NM 4800 ASL		

INGENIKA BC

CAP6

REF	N56 47 26 W124 53 48 23°E UTC-8(7) Elev 2230' A5022 D-12 E-15		ELEV 2230
OPR	British Columbia Ministry of Forests, Aviation Duty Officer 250-376-6261 Reg		
FLT PLN	NOTAM FILE CYXS		
FIC	Kamloops 866-WXBRIEF (Toll free within Canada) or 866-541-4101 (Toll free within Canada & USA)		
RWY DATA	Rwy 11/29 6000x100 gravel		
RCR	Opr No win maint. Apron rstd to Air Tanker ops. Northern Thunderbird Air 250-963-9611, Jun-Sep.		
COMM			
ATF	tfc 123.2 5NM 5200 ASL		
CAUTION	Horses ocsl at large in vic of rwy. Areas of loose gravel and exposed large stones.		

CANADA FLIGHT SUPPLEMENT / GPH 205

Effective 0901Z 20 November 2008 to 0901Z 15 January 2009

B412 AERODROME/FACILITY DIRECTORY

INNISFAIL AB

CEM4

REF	N52 04 43 W114 01 39 3.9NW 17°E UTC-7(6) Elev 3017' A5005 A5015 E-15 E-16 LO2	
OPR	County 403-350-2150 Reg	
PF	B-1 D-2,3,4,5,6	
FLT PLN	NOTAM FILE CYQF Edmonton 866-WXBRIEF (Toll free within Canada) or 866-541-4102 (Toll free within Canada & USA)	
SERVICES		
FUEL	100	
OIL	15W50	
S	5	
RWY DATA	Rwy 04(043°)/22(223°) 3025x100 asphalt Rwy 10(103°)/28(283°) 3025x100 asphalt Rwy 16(163°)/34(343°) 3025x100 asphalt	
RCR	Call 403-227-4811 dur daytime Ltd maint. Rws 04/22 & 10/28 no win maint.	
LIGHTING	16-(TE ME), 34-(TE ME) ARCAL-123.0 type K	
COMM		
ATF	tfc 123.0 5NM 6000 ASL	
CAUTION	Glider activity. Rws 04/22 & 10/28 asphalt sfc ruf. Parachuting vic of apt dur daylight hrs 12,500 ASL and below.	

INNISFAIL (HOSP) AB (Heli)

CSF2

REF	N52 01 10 W113 57 13 Adj 17°E UTC-7(6) ELEV 3107' A5005 A5015 RCAP	
OPR	Town of Innisfail 403-227-3376 Reg PNR	
PF	A-1,4 C-2,3,5 D-6	
FLT PLN	NOTAM FILE CYQF Edmonton 866-WXBRIEF (Toll free within Canada) or 866-541-4102 (Toll free within Canada & USA)	
PAD DATA	19.5' dia asphalt Safety area 29.5' dia asphalt	
RCR	Opr	
LIGHTING	RF-(FL) (4 x white) ARCAL-123.05 type J (also activates windsock, flashing bcn on aquatic centre roof and hospital roof)	
COMM		
ATF	tfc 123.0 5NM centred on Innisfail A/D 4 NM NW 6000 ASL	
PRO	Two arr/dep paths 096° (multi eng heli only) & 243° fr heli	
CAUTION	P-lines to E and N of pad Glider and Parachuting activities (local area) operating from Innisfail A/D CEM4	

INTL PEACE GARDEN ND USA — See DUNSEITH / INTL PEACE GARDEN

CANADA FLIGHT SUPPLEMENT / GPH 205

Effective 0901Z 20 November 2008 to 0901Z 15 January 2009

AERODROME/FACILITY DIRECTORY B413

INUKJUAQ QC

CYPH

REF	N58 28 19 W78 04 37 Adj NW 21°W UTC-5(4) Elev 83' A5026 D-14 LO5 HI1 CAP	
OPR	Administration Régionale Kativik 819-964-2968 14-22Z‡ Mon-Fri O/T 819-964-3434 Ext 154 Fax 819-964-2462 Cert	
PF	A-1 C-2,4,5	
FLT PLN	NOTAM FILE CYGW FIC (bil) Québec 866-GOMÉTÉO or 866-WXBRIEF (Toll free within Canada) or 866-541-4105 (Toll free within Canada & USA) ACC Montréal 800-633-1353 CARS 819-254-8190 ltd hrs (see COMM) WX METAR dur CARS hrs O/T Legacy AWOS (see COMM). TAF H24, issue times: 00, 06, 12, 18Z.	
SERVICES		
FUEL	100LL(D) ltd, JA-1 PNR FCNQ Petro 819-254-8608 13-22Z‡ Mon-Fri O/T COOP 819-254-8969 svc chg. Visa and Master Card accepted. Credit by prior arrng only, ctc 800-363-7610, allow 7 working days.	
RWY DATA	Rwy 07(068°)/25(248°) 3520x100 gravel. Rwy 07 up 0.7% first 1312'. Rwy 25 up 0.4% first 2198'.	
RCR	Opr	
LIGHTING	07-AS(TE ME), 25-AS(TE ME) ARCAL-122.1 type J	
COMM		
DRCO	(bil) Québec rdo 126.7 (FISE)	
MF/ATF	aprt rdo (English only) ltd hrs O/T tfc 122.1 5NM 3100 ASL (CAR 602.98)	
APRT RDO	122.1 (V) 1230-2230Z‡	
Legacy AWOS	125.3 (English), 122.55 (French)	
NAV		
NDB	PH 396 (M) N58 28 04 W78 04 24 at A/D	
CAUTION	Possibility of caribou on rwy Oct-May. Daily radiosonde balloon launches with an ascent rate of 1000 ft/min between the hrs of 1115-1345Z and 2315-0145Z.	

CANADA FLIGHT SUPPLEMENT / GPH 205

Effective 0901Z 20 November 2008 to 0901Z 15 January 2009

B414 AERODROME/FACILITY DIRECTORY

INUVIK (MIKE ZUBKO) NT

CYEV

REF	N68 18 15 W133 28 58 6.5E 31°E UTC-7(6) Elev 224' A5034 A5040 C-9 C-10 LO5 HI2 CAP	
OPR	Govt of Northwest Territories 867-777-2467 Cert	
PF	A-1,2,3,6 avbl 1230-0730Z± Mon-Fri, 1230-24Z± Sat, 19-0730Z± Sun. D-1,2,3,4,5,6	
CUST	AOE/15 888-226-7277 16-24Z± Mon-Fri exc hols	
FLT PLN	NOTAM FILE CYEV & CZNB North Bay 866-WXBRIEF (Toll free within Canada) or 866-541-4109 (Toll free within Canada & USA)	
ACC	Edmonton IFR 888-358-7526 or 780-890-8304/8305	
WX	METAR H24. TAF H24, issue times: 01, 07, 13, 19Z.	
PIK	Main floor tml bldg, 24 hrs access.	
SERVICES		
FUEL	100, JA-1, HPR, (CON I IP JA-1, FSII HPR)	
OIL	Aeroshell 15W50	
S	1,2,4,6	
MIL CON	Treeline Avn (Imperial Oil) 867-777-2682 Oprg hrs change frequently. Call stating requirements.	
RWY DATA	Rwy 06(055°)/24(235°) 6000x150 asphalt Rwy 06 up 0.45% Ltd graded areas provided outside rwy edge.	
TWY	Twy B, C - no VCS, Twy E - PVT, no VCS	
RCR	Opr CRFI & win maint avbl 15-2330Z± Mon-Fri, 1600-1900Z± Sat, Sun & hols O/T 1 hr PNR ctc 867-678-0791. Call out chg may be levied. PLR/PCN	
LIGHTING	06-AN(TE HI), 24-AO(TE HI) V2	
COMM		
RADIO	122.3 262.7 (E) (emerg only 867-777-2522)	
RCO	Arctic rdo 126.7 (FISE) 5680 (FISE)	
ATIS	128.5 ltd hrs	
MF	rdo 122.3 5NM 3200 ASL (CAR 602.98)	
PAL	Edmonton Ctr 132.4	
VDF	122.3	
NAV		
ILS	IEV 110.3 (Rwy 06-24) RVR	
NDB	INUVIK EV 254 (M) N68 19 34 W133 35 34 087° 2.7NM to A/D	
VOR/DME	INUVIK YEY 112.5 Ch 72 N68 18 29 W133 32 54 (264') at A/D	
DME	INUVIK IEV 110.3 Ch 40 N68 18 09 W133 29 54 (219')	
CAUTION	Radiosonde balloon launches fr N68 19 00 W133 31 00 (0.8NM NW thld 06) at 1115Z to 1129Z & 2315Z to 2329Z dly. INUVIK/Shell Lake water A/D 3NM W. When pilots advs DND is on site, acft requested to remain clear of DND hg.	

CANADA FLIGHT SUPPLEMENT / GPH 205

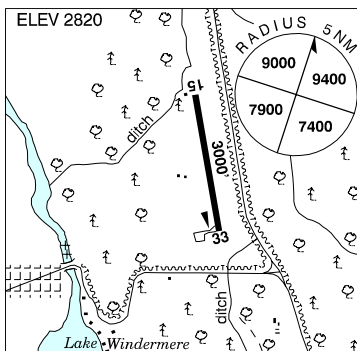
Effective 0901Z 20 November 2008 to 0901Z 15 January 2009

AERODROME/FACILITY DIRECTORY B415

INVERMERE BC

CAA8

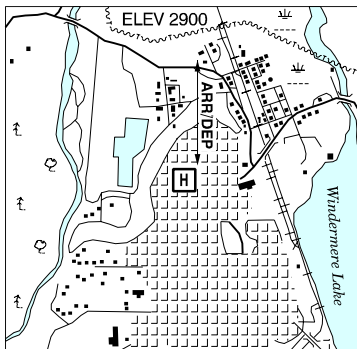
REF	N50 31 W116 00 1.4NE 18°E UTC-7(6) Elev 2820' A5005 E-15
OPR	Babin Air 250-342-3565 Reg PPR Ldg fees apply to commercial acft
PF	A-1 B-2,5 C-3,4,6
FLT PLN	NOTAM FILE CYXC FIC Kamloops 866-WXBRIEF (Toll free within Canada) or 866-541-4101 (Toll free within Canada & USA)
SERVICES	
FUEL	100LL PNR
OIL	All
S	1,2,4,5,6 PNR
RWY DATA	Rwy 15/33 3000x75 asphalt
RCR	Opr Ltd win maint
COMM	
DRCO	Pacific rdo 126.7 (FISE)
ATF	tfc 123.2 5NM 5900 ASL
PRO	Rgt hand circuits rwy 15 (CAR 602.96).
CAUTION	Hang gliders/sailplanes in area E of hwy adj to rwy.



INVERMERE (HOSP) BC (Heli)

CIV2

REF	N50 30 38 W116 02 05 18°E UTC-7(6) Elev 2900' A5005
OPR	Invermere District Hosp 250-342-9201 Cert PPR
FLT PLN	NOTAM FILE CYXC FIC Kamloops 866-WXBRIEF (Toll free within Canada) or 866-541-4101 (Toll free within Canada & USA)
PAD DATA	33' x 33' asphalt 108' x 100' sloping gnd
RCR	Opr
COMM	
DRCO	Pacific rdo 126.7 (FISE)
ATF	tfc 123.2 5NM centred on Invermere A/D 1NM NE 5900 ASL
PRO	Arr/dep path N along 10th Ave rstd to multi-engine heli.
CAUTION	Marked P-line running N/S 100' E of heli. FATO 78' x 78' unmarked centred on pad.



CANADA FLIGHT SUPPLEMENT / GPH 205

Effective 0901Z 20 November 2008 to 0901Z 15 January 2009

B416 AERODROME/FACILITY DIRECTORY

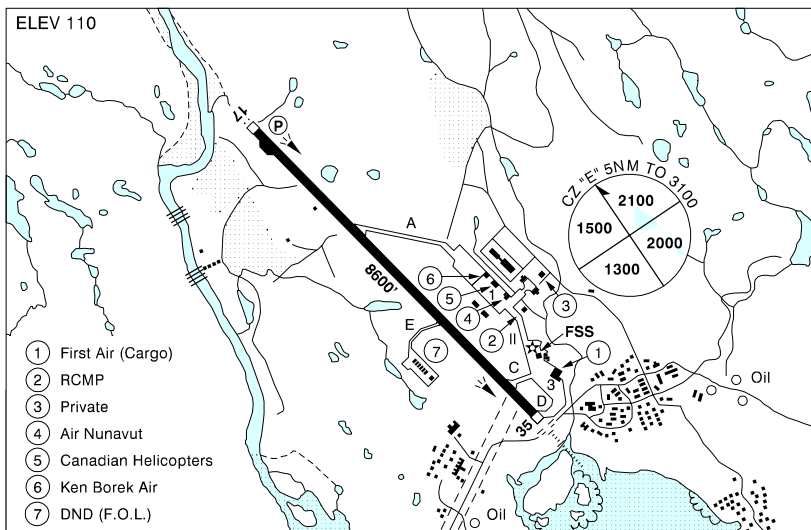
INVERNESS (CONSOLIDATED MEM HOSP) NS (Heli)

CNV2

REF	N46 11 58 W61 17 29 2S 20°W UTC-4(3) Elev 100' A5003 F-22	
OPR	Inverness Consolidated Mem Hosp 902-258-2100 Reg PPR	
FLT PLN	NOTAM FILE CYQY Halifax 866-WXBRIEF or (French) 866-GOMÉTÉO (Toll free within Canada) or 866-541-4106 (Toll free within Canada & USA) ACC Moncton 506-867-7176 or 866-480-8200 Fit Plns by Fax 506-867-7180 & include phone numbers where pilot can be reached prior to dep	
PAD DATA	79' x 79' asphalt 108' x 108'	
LIGHTING	FH	
COMM	ATF tfc 123.2 5NM 3100 ASL	
PRO	Arr/dep path 298° fr heli.	
CAUTION	Unlgtd p-line along roadway east of pad.	

IQUALUIT NU

CYFB



REF	N63 45 23 W68 33 21 34°W UTC-5(4) Elev 110' A5033 D-15 LO5 HI1 CAP
OPR	Govt of Nunavut 867-979-5224 Cert
PF	A-1,2 (ltd hrs), 3,6 C-4,5
CUST	AOE/15 general aviation 888-226-7277 14-22Z± Mon-Fri exc hols O/T 1 hr PNR. Thru fits should carry onward documentation to final destn in Europe or North America.

CANADA FLIGHT SUPPLEMENT / GPH 205

Effective 0901Z 20 November 2008 to 0901Z 15 January 2009

AERODROME/FACILITY DIRECTORY B417

IQUALUIT NU (Cont'd)

CYFB

FLT PLN	<p>FIC NOTAM FILE CYFB & CZNB North Bay 866-WXBRIEF (Toll free within Canada) or 866-541-4109 (Toll free within Canada & USA)</p> <p>ACC Montréal 800-633-1353</p> <p>WX METAR H24. TAF H24, issue times: 00, 06, 12, 18Z.</p>
SERVICES	<p>FUEL 100LL ltd quantity, prior arrangements thru Uqsuq Corp 867-979-1620 or 867-979-2855 JA-1 (CON I IP JA-1)</p> <p>OIL All</p> <p>S 1,2,4,5, O/R, 6</p> <p>ARFF 5 13-22Z‡ Mon-Fri O/T call out chg 12 hrs PNR</p> <p>SUP FL D & A-ice</p> <p>JASU Hobart 28V</p> <p>MIL CON Uqsuq Corp 867-979-2855 11-03Z‡ O/T call 867-975-1289. Call out chg.</p>
RWY DATA	<p>TWY Rwy 17(170°)/35(350°) 8600x200 asphalt No vehicle control on twys C, D, & E</p> <p>APRON No acct prkg apron II. SE corner apron III designated de-icing area.</p> <p>RCR Opr Win maint ltd hrs 1230-2130Z‡ CRFI O/T 1.5 hrs PNR thru Narwhal Artic Svcs 867-975-1346 or 867-975-1610. Call out chg.</p>
LIGHTING	17-AS(TE HI) P3, 35-AE(non std 700') AS(TE HI) O/R Iqualuit FSS
COMM	<p>RADIO Iqualuit 122.2 296.2 (E) (emerg only 867-979-5865)</p> <p>RCO Arctic rdo 123.275 (FISE) 126.7 (bcst) 5680</p> <p>MF Iqualuit rdo 122.2 within 5NM to 3100 ASL (CAR 602.98)</p> <p>PAL Montréal Ctr 134.55</p> <p>VDF 122.2</p> <p>INTL AIR Gander rdo 126.9 2971 4675 8891 11279 NAT 'D' (SELCAL)</p>
NAV	<p>VOT 114.8</p> <p>NDB FROBAY YFY 204 (H) N63 44 00 W68 32 53 025° 1.4NM to A/D</p> <p>VOR FROBAY YFB 117.4 N63 44 30 W68 28 24 (394') 329° 2.4NM to A/D</p> <p>DME IFB 109.9 Ch 36 N63 45 00 W68 32 39 (116')</p> <p>ILS IFB 109.9 (Rwy 35-17) RVR</p>
PRO	<p>Rgt hand circuits rwy 17 (CAR 602.96). Flts requiring an IFR Oceanic clearance must ctc the FSS 10 min prior to starting engine.</p> <p>HELI Heli refuelling should land on apron.</p>
CAUTION	<p>Terrain: Prominent terrain bordering rwy.</p> <p>Windssocks: Due to surrounding terrain, sfc winds may cause windssocks on aprt to show different wind directions.</p> <p>Wildlife: Possible presence of large animals within aprt perimeter.</p> <p>Radiosonde: Daily radiosonde balloon launches at 0.25NM W of thld rwy 35, with an ascent rate of 1000 ft/min between the hrs of 1115-1345Z and 2315-0145Z.</p>

CANADA FLIGHT SUPPLEMENT / GPH 205

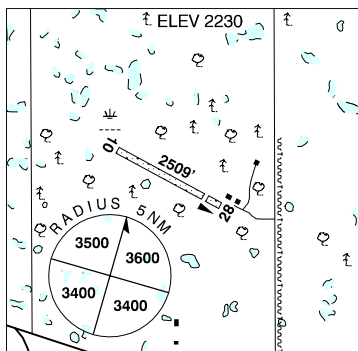
Effective 0901Z 20 November 2008 to 0901Z 15 January 2009

B418 AERODROME/FACILITY DIRECTORY

IRMA AB

CFU8

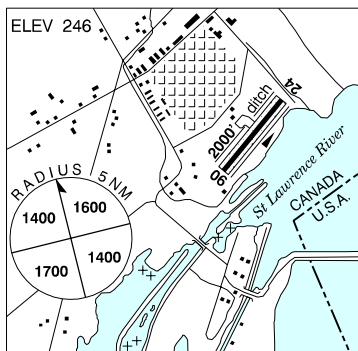
REF	N52 54 44 W111 10 26 2.2E 16°E UTC-7(6) Elev 2230' A5015 E-16
OPR	Gordon Oracheski 780-754-2846/3772 Reg PNR
PF	C-1,2,5
FLT PLN	NOTAM FILE CYLL FIC Edmonton 866-WXBRIEF (Toll free within Canada) or 866-541-4102 (Toll free within Canada & USA)
RWY DATA	Rwy 10(099°)/28(279°) 2509x65 oiled gravel Thld 28 displ 310'. RCR Opr Ltd win maint
COMM	ATF UNICOM ltd hrs O/T tfc 122.8 5NM 5300 ASL
CAUTION	Hgr adj NE corner thld rwy 28. Ultra-light activity in vic.



IROQUOIS ON

CNP7

REF	N44 50 W75 19 Adj S 14°W UTC-5(4) Elev 246' A5000 A5002 F-21
OPR	Township of South Dundas 613-652-4838 Reg PPR
PF	B-1 C-2,4,5 D-3,6
FLT PLN	NOTAM FILE CYGK FIC London 866-WXBRIEF (Toll free within Canada) or 866-541-4104 (Toll free within Canada & USA)
RWY DATA	Rwy 06/24 2000x75 turf/asphalt, centre 23' asphalt RCR Opr No win maint
COMM	ATF UNICOM ltd hrs O/T tfc 122.8 5NM 3200 ASL
PRO	Circuit practice flying proh. Rgt hand circuits rwy 06 (CAR 602.96). Left hand circuits rwy 24.



CANADA FLIGHT SUPPLEMENT / GPH 205

Effective 0901Z 20 November 2008 to 0901Z 15 January 2009

AERODROME/FACILITY DIRECTORY B419

IROQUOIS FALLS ON

CNE4

REF	N48 44 30 W80 47 36 5WSW 12°W UTC-5(4) Elev 1008' A5009 E-18 F-21 LO4 LO7 CAP	
OPR	Town 705-232-6435/6256 Reg	
PF	B-1 C-2,3,4,5 D-6	
FLT PLN	NOTAM FILE CYTS London 866-WXBRIEF (Toll free within Canada) or 866-541-4104 (Toll free within Canada & USA)	
RWY DATA	Rwy 14(138°)/32(318°) 3999x100 turf, centre 75' asphalt. Rwy 18/36 2930x100 turf Rwy 07/25 2555x100 turf	
RCR	Opr No win maint rwys 07/25 & 18/36.	
LIGHTING	14-(TE ME) AP, 32-(TE ME) AP ARCAL-122.8 type K	
COMM	ATF UNICOM 1330-23Z± O/T tfc 122.8 5NM 4000 ASL	
NAV	NDB 7P 382 N48 42 30 W80 44 10 325° 3.0NM to A/D Pvt Unmonitored	
PRO	Rgt hand circuits rwys 07 & 18 (CAR 602.96). Glider activity May thru Nov wknds & hols.	

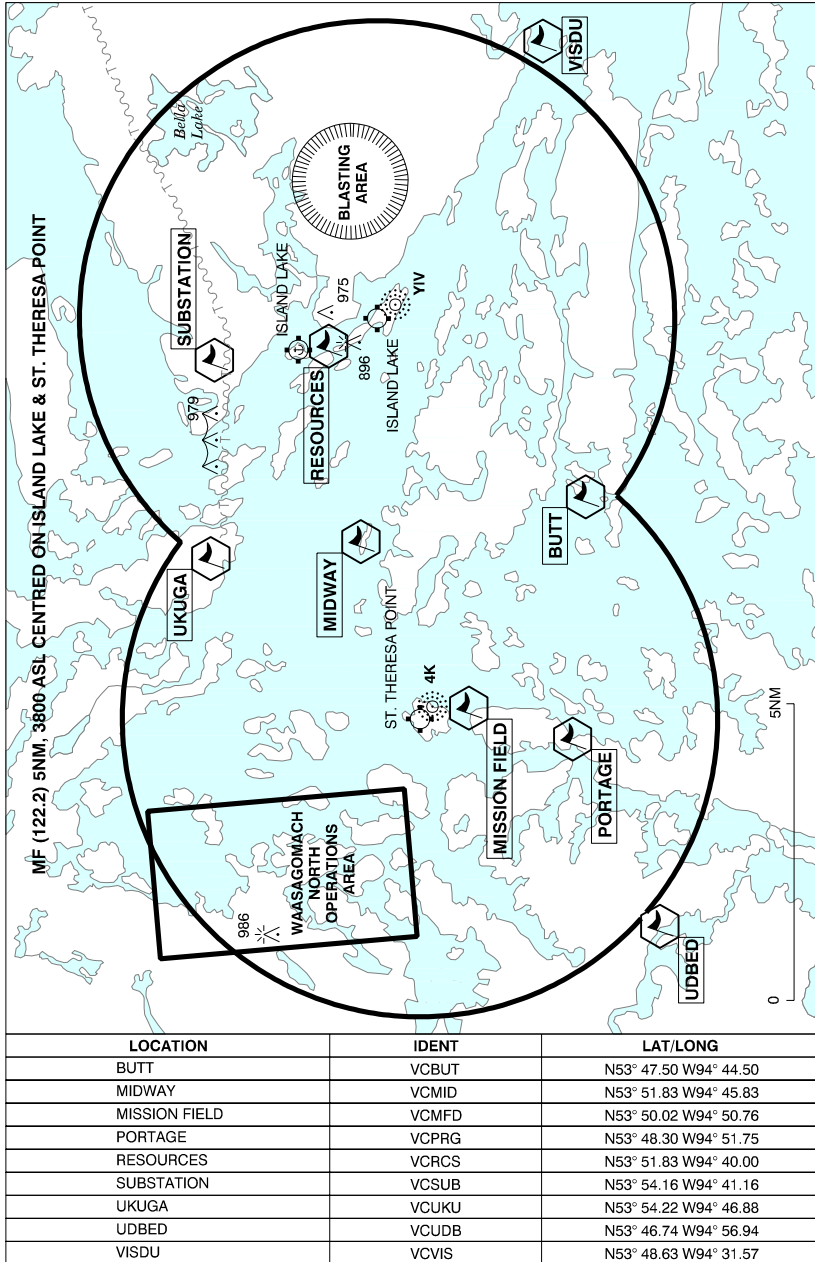
ISKUT VILLAGE BC — See EDDONTENAJON / ISKUT VILLAGE

CANADA FLIGHT SUPPLEMENT / GPH 205

Effective 0901Z 20 November 2008 to 0901Z 15 January 2009

B420 AERODROME/FACILITY DIRECTORY

ISLAND LAKE - ST. THERESA POINT VFR TERMINAL PROCEDURES CHART



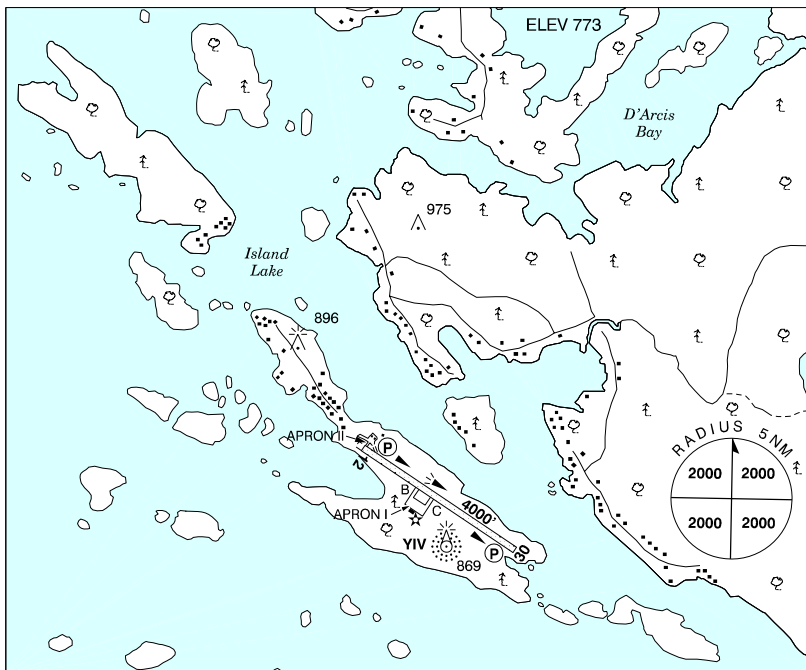
CANADA FLIGHT SUPPLEMENT / GPH 205

Effective 0901Z 20 November 2008 to 0901Z 15 January 2009

AERODROME/FACILITY DIRECTORY B421

ISLAND LAKE MB

CYIV



REF	N53 51 26 W94 39 13 5WNW 1°E UTC-6(5) Elev 773' A5017 E-17 LO3 HI4 CAP
OPR	Govt of Manitoba 204-677-6722 Cert
PF	A-1 C-2,4,5 Tml bldg opr 13-24Z† Mon-Fri, clsd Sat, Sun & hols
FLT PLN	NOTAM FILE CYIV
FIG	Winnipeg 866-WXBRIEF (Toll free within Canada) or 866-541-4103 (Toll free within Canada & USA)
WX	METAR H24. LWIS (see COMM) TAF H24, issue times: 01, 07, 13, 19Z.
RWY DATA	Rwy 12(121°)/30(301°) 4000x100 crushed rock
RCR	APM 204-456-2736 13-23Z† Mon-Fri exc hols O/T 204-456-9485
LIGHTING	12-(TE ME) P1, 30-(TE ME) P1 ARCAL-122.2 type K
COMM	
RCO	Thunder Bay rdo 122.2 (RAAS) Winnipeg rdo 122.375 (FISE) 126.7 (bcst)
MF	Thunder Bay rdo 122.2 5NM 3800 ASL (CAR 602.98)
PAL	Winnipeg Ctr 132.825
LWIS	(Wind & altimeter) 128.5

CANADA FLIGHT SUPPLEMENT / GPH 205

Effective 0901Z 20 November 2008 to 0901Z 15 January 2009

B422 AERODROME/FACILITY DIRECTORY

ISLAND LAKE MB (Cont'd)

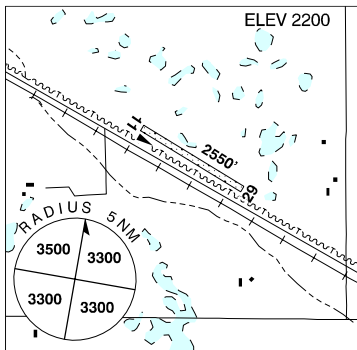
CYIV

NAV	NDB YIV 300 (M) N53 51 14 W94 39 12 at A/D DME IV 116.0 Ch 107 N53 51 12 W94 39 12 (806') at A/D
CAUTION	Extv low lvi heli tfc within MF area dur break-up & freeze-up. See Island Lake - St. Theresa Point VTPC. St. Theresa Point A/D, 7NM W. Three twr hydro cable span centered on N53 54 09 W94 42 49 (3.5NM NW aprt) 200 AGL 979 ASL, red & white markings on span. Ocsl blasting 1.0NM radius N53 52 01 W94 35 22 (2.3NM ENE of aprt) 200 AGL (1000 ASL) by NOTAM. Unlgttd twr 975 ASL (200 AGL) 0.9NM N.

ITUNA SK

CJM2

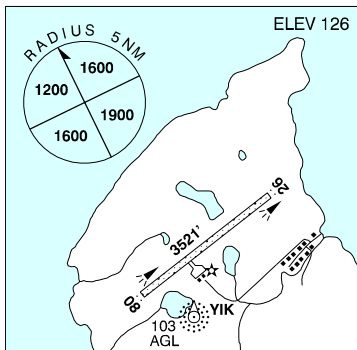
REF	N51 08 46 W103 25 34 2.6 SE 10°E UTC-6 Elev 2200' A5006 E-16
OPR	Town 306-795-2272 Reg
FLT PLN	NOTAM FILE CYXE FIC Edmonton 866-WXBRIEF (Toll free within Canada) or 866-541-4102 (Toll free within Canada & USA)
RWY DATA	Rwy 11(110°)/29(290°) 2550x100 turf RCR Opr Ltd win maint
COMM	ATF tfc 123.2 5NM 5200 ASL



IYUJIVIK QC

CYIK

REF	N62 25 02 W77 55 31 26°W UTC-5 Elev 126' A5032 D-14 D-15 LO5 CAP
OPR	Administration Régionale Kativik 819-964-2968 14-22Z‡ Mon-Fri O/T 819-964-3434 Ext 154 Fax 819-964-2462 Cert
PF	A-1 C-2,4,5
FLT PLN	NOTAM FILE CYGW FIC (bil) Québec 866-GOMÉTÉO or 866-WXBRIEF (Toll free within Canada) or 866-541-4105 (Toll free within Canada & USA) ACC Montréal 800-633-1353 CARS 819-922-3005 ltd hrs (see COMM) WX METAR dur CARS hrs. TAF 15-22Z‡, issue times: 15Z‡.
SERVICES	FUEL DFA, 100LL(D) ltd, JA-1 PNR FCNQ Petro 819-922-9923 13-22Z‡ Mon-Fri O/T COOP 819-922-9922 svc chg. VISA and Master Card accepted. Credit by prior arrng only, ctc 800-363-7610, allow 7 working days.
RWY DATA	Rwy 08(075°)/26(255°) 3521x100 gravel Rwy 08 up 1.4% first 2100'. Rwy 26 up 0.4% first 1411'. RCR Opr
LIGHTING	08-AS(TE ME), 26-AS(TE ME) ARCAL-122.1 type J



CANADA FLIGHT SUPPLEMENT / GPH 205

Effective 0901Z 20 November 2008 to 0901Z 15 January 2009

AERODROME/FACILITY DIRECTORY B423

IVUJIVIK QC (Cont'd)

CYIK

COMM	
MF/ATF APRT RDO	aprt rdo (English only) ltd hrs O/T tfc 122.1 5NM 3200 ASL (CAR 602.98) 122.1 (V) 1230-2230Z†
NAV	
NDB	YIK 225 (M) N62 24 49 W77 55 38 040° 0.2NM to A/D Unmonitored when CARS clsd
CAUTION	Possible vehicle on rwy. Discrepancy btwn reported wind & actual wind fr Southern quadrant due to surrounding terrain.

