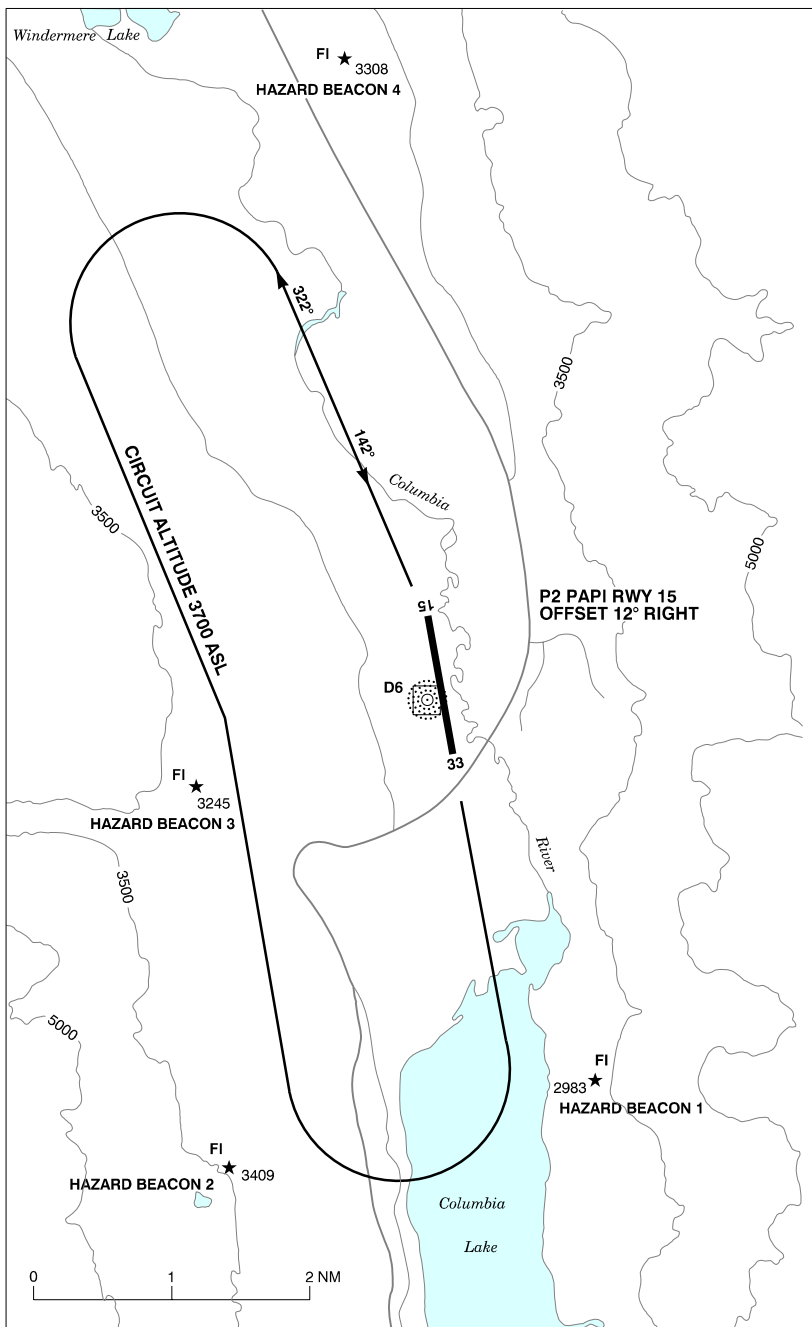


CANADA FLIGHT SUPPLEMENT / GPH 205

Effective 0901Z 20 November 2008 to 0901Z 15 January 2009

AERODROME/FACILITY DIRECTORY B265

FAIRMONT VFR TERMINAL PROCEDURES CHART - NIGHT CIRCUIT PROCEDURE



CANADA FLIGHT SUPPLEMENT / GPH 205

Effective 0901Z 20 November 2008 to 0901Z 15 January 2009

B266 AERODROME/FACILITY DIRECTORY

FAIRMONT HOT SPRINGS BC

CYZC

REF	N50 19 49 W115 52 24 17°E UTC-7(6) Elev 2661' A5005 E-15 LO2 HI3 CAP	
OPR	Fairmont Hot Springs Resort 250-345-2121/6311 Fax 250-345-2162 APM 250-345-0180, 250-342-1664 Reg Ldg fees	
PF	B-1 C-2,5 D-3,4,6	
FLT PLN	NOTAM FILE CYXC	
FIC	Kamloops 866-WXBRIEF (Toll free within Canada) or 866-541-4101 (Toll free within Canada & USA)	
WX	LWIS (Pvt) 250-345-6361 (see COMM)	
SERVICES		
FUEL	100LL, JA (with FSII), SP	
OIL	All	
S	4,5,6	
RWY DATA	Rwy 15/33 6003x100 asphalt Thld 33 displ 820'. Rwy 15 up 0.4%.	
RCR	Opr Ltd win maint	
LIGHTING	15-AS(TE LO) P2, 33-AS(TE LO) P2 PAPI rwy 15 offset 12° rgt. ARCAL-123.2 type K. ARCAL opr A/D beacon.	
COMM		
DRCO	Pacific rdo (Invermere) 126.7 (FISE)	
ATF	tfc 123.2 5NM 5700 ASL	
LWIS (Pvt)	122.975	
NAV		
NDB	D6 261 (L) N50 19 37 W115 52 36 at A/D Pvt	
DME	D6 109.6 Ch 33 N50 19 37 W115 52 36 at A/D Pvt	
PRO	Rgt hand circuits rwy 15 (CAR 602.96).	
CAUTION	Hwy overpass & p-line aprx 40 AGL crosses apch rwy 33 aprx 1250' fr rwy thld. Extensive glider activity over mtns to E of A/D. Recommend only pilots familiar with lcl area use this aprt dur hrs of darkness. Ngt ops not recommended unless all 4 hazard beacons oprg. Extv bird activity in vic of rwy.	

CANADA FLIGHT SUPPLEMENT / GPH 205

Effective 0901Z 20 November 2008 to 0901Z 15 January 2009

AERODROME/FACILITY DIRECTORY B267

FAIRVIEW AB

CEB5

REF	N56 04 53 W118 26 05 1.5NW 21°E UTC-7(6) Elev 2166' A5014 A5022 D-13 E-15 LO1	
OPR	Muni District of Fairview 780-835-4903 Reg	
PF	B-1 D-2,3,4,5	
FLT PLN	NOTAM FILE CYPE	
FIC	Edmonton 866-WXBRIEF (Toll free within Canada) or 866-541-4102 (Toll free within Canada & USA)	
ACC	Edmonton IFR 888-358-7526 or 780-890-8304/8305	
SERVICES		
FUEL	100, JB (with FSII) Cardlock system, accepts Visa and Mastercard	
RWY DATA	Rwy 04(037°)/22(217°) 3492x75 asphalt	
RCR	Opr Ltd maint	
LIGHTING	04-(TE LO), 22-(TE LO) ARCAL-122.8 type K	
COMM		
ATF	UNICOM ltd hrs O/T tfc 122.8 5NM 5200 ASL	
NAV		
NDB	8C 295 (M) N56 04 32 W118 26 26 008° 0.4NM to A/D Pvt	
DME	8C 111.4 (M) Ch 51 N56 04 36 W118 26 28 (2190') 016° 0.4NM to A/D Pvt	

FARNHAM QC

CSN7

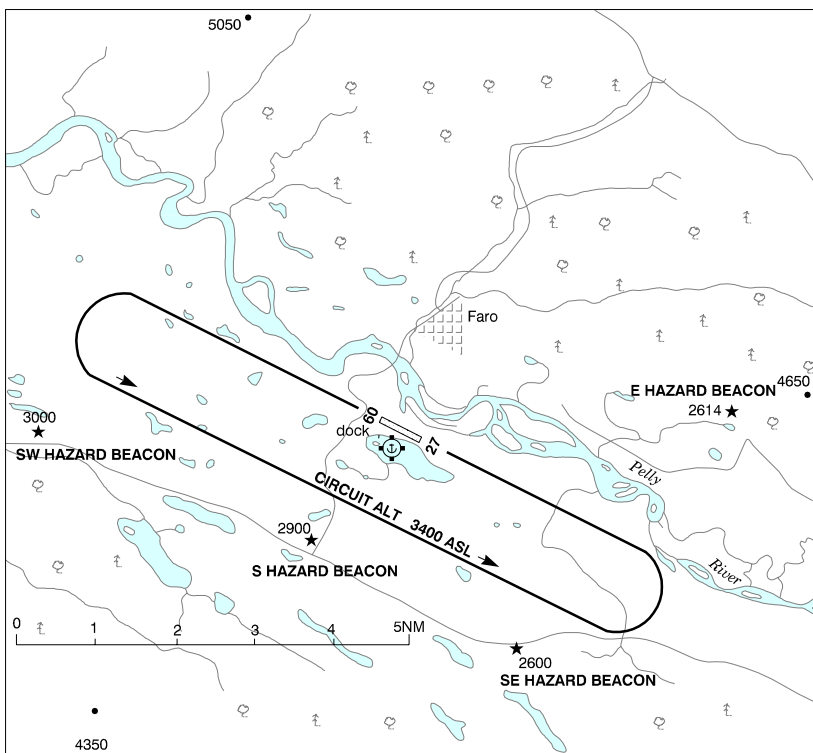
REF	N45 17 08 W73 00 28 0.5NM 16°W UTC-5(4) Elev 180' aprx A5002 VTA F-21	
OPR	Parachutisme Nouvel Air Inc 450-293-8118 Reg PPR	
PF	A-1,2 C-3,5,6 D-4	
FLT PLN	(bil) NOTAM FILE CYUL	
FIC	Québec 866-GOMÉTÉO or 866-WXBRIEF (Toll free within Canada) or 866-541-4105 (Toll free within Canada & USA)	
RWY DATA	Rwy 11/29 2500x40 gravel	
RCR	No win maint Soft rwy	
COMM		
ATF	tfc 123.3 5NM 3200 ASL	
PRO	Rgt hand circuits rwy 11 (CAR 602.96).	
CAUTION	Parachute activities Apr-Nov up to 16,500 ASL.	

CANADA FLIGHT SUPPLEMENT / GPH 205

Effective 0901Z 20 November 2008 to 0901Z 15 January 2009

B268 AERODROME/FACILITY DIRECTORY

FARO VFR TERMINAL PROCEDURES CHART



FARO YT

CZFA

REF N62 12 27 W133 22 33 1.5S 26°E
UTC-8(7) Elev 2351' A5028 D-12
LO5 HI2 CAP

OPR Govt of Yukon 867-634-2450 or
867-994-2791/3046 Reg

PF A-1 C-2,4,5

FLT PLN NOTAM FILE CZFA

FIC Whitehorse 866-WXBRIEF (Toll free
within Canada) or 866-541-4107 (Toll
free within Canada & USA)

ACC Edmonton IFR 888-358-7526 or
780-890-8304/8305

CARS 867-994-2791 Ltd hrs (see COMM)

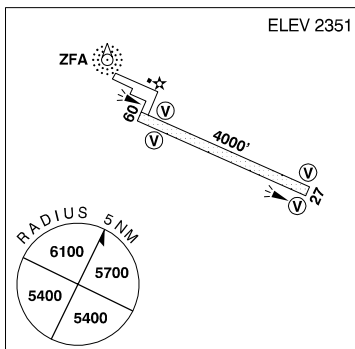
WX METAR dur CARS hrs ops
(see COMM).

TAF 19-01Z ‡, Oct 1 - May 31; 15-01Z ‡ Jun 1-Sep 30 issue times: 19Z (DT 18Z) Oct
1 - May 31;(DT 15, 18Z) Jun 1-Sep 30

SERVICES

FUEL 100LL, JB 867-994-2728/2758, after CARS hrs 867-994-3224/3466
S 4,5,6

ELEV 2351



CANADA FLIGHT SUPPLEMENT / GPH 205

Effective 0901Z 20 November 2008 to 0901Z 15 January 2009

AERODROME/FACILITY DIRECTORY B269

FARO YT (Cont'd)

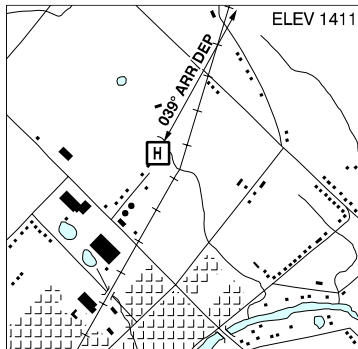
CFZA

RWY DATA RCR	Rwy 09(088°)/27(268°) 4000x100 gravel Rwy 27 up 0.43% CARS, dur CARS hrs ops (see COMM) Ltd maint
LIGHTING	09-(TE LO) V1, 27-(TE LO) V1 ARCAL-122.1 type J
COMM	
RCO	Whitehorse rdo 126.7 (FISE)
MF	aprt rdo ltd hrs O/T tfc 122.1 5NM 5400 ASL (CAR 602.98)
APRT RDO	122.1 (V) (DT 13-01Z) Jun 1-Sep 30; 15-23Z Oct 1-May 31
NAV	
NDB	ZFA 378 (M) N62 12 43 W133 23 13 at A/D Unmonitored when CARS clsd
PRO	Rgt hand circuits rwy 09 (CAR 602.96).
CAUTION	Ngt ops not recommended unless all 4 hazard beacons are oprg. Only pilots familiar with lcl terrain should use this aprt dur hrs of darkness. Soft sections 200' fr thld rwy 27. S & SE hazard bcn (depicted on VTTC), vasis and NDB all u/s when A/D oprg on backup power. See VTTC.

FERGUS (GROVES MEM COMMUNITY HOSP) ON (Heli)

CPB2

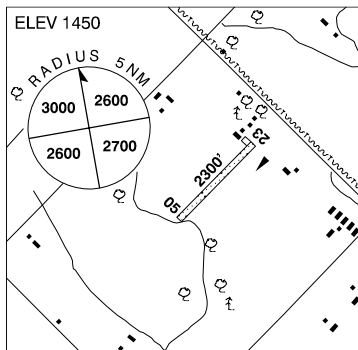
REF	N43 43 18 W80 22 32 Adj N 10°W UTC-5(4) Elev 1411' VTA A5000
OPR	Groves Mem Community Hosp 519-843-2010 Cert PPR
FLT PLN FIC	NOTAM FILE CYKF London 866-WXBRIEF (Toll free within Canada) or 866-541-4104 (Toll free within Canada & USA)
PAD DATA	82' x 87' asphalt 114' x 114' max heli length 54.84'
LIGHTING	RY(LO) RF(LO) DR
PRO	Single arr/dep path 039° fr heli.



FERGUS (JUERGENSEN FIELD) ON

CPG7

REF	N43 44 06 W80 26 50 4NW 10°W UTC-5(4) Elev 1450' VTA A5000 F-21
OPR	C. Juergensen 519-843-1487 Reg
PF	B-1,5,6 C-2,3,4
FLT PLN FIC	NOTAM FILE CYKF London 866-WXBRIEF (Toll free within Canada) or 866-541-4104 (Toll free within Canada & USA)
SERVICES	
FUEL	100LL
OIL	Emergency only
S	4,5,6
RWY DATA RCR	Rwy 05/23 2300x75 turf Opr No win maint.



CANADA FLIGHT SUPPLEMENT / GPH 205

Effective 0901Z 20 November 2008 to 0901Z 15 January 2009

B270 AERODROME/FACILITY DIRECTORY

FERGUS (JUERGENSEN FIELD) ON (Cont'd)

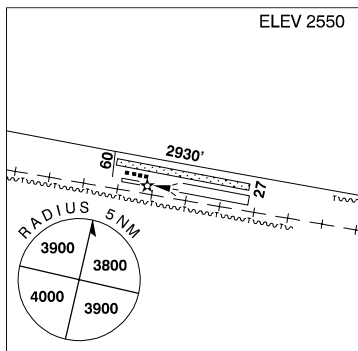
CPG7

COMM	
ATF	tfc 123.4 5NM 4500 ASL
CAUTION	Hydro line aprx 30' high 700' fr thld 23. Glider activity May-Sep 7000 ASL & below. Trees on apch to rwy 05/23. Cultivated field NW edge of rwy 05/23.

FERLAND SK

CJH4

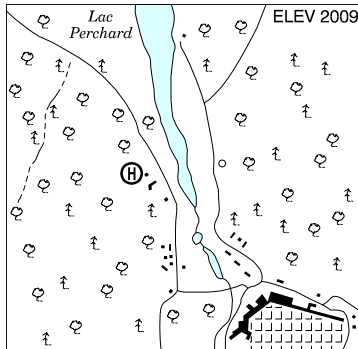
REF	N49 26 42 W106 55 55 1E 13°E UTC-6 Elev 2550' A5006 E-16
OPR	Ferland Flying Club 306-478-2415/2451 Reg PPR
PF	C-1,2,5 D-4
FLT PLN	NOTAM FILE CYYN
FIC	Edmonton 866-WXBRIEF (Toll free within Canada) or 866-541-4102 (Toll free within Canada & USA)
RWY DATA	Rwy 09(089°)/27(269°) 2930x70 turf
RCR	Opr Ltd win maint
LIGHTING	09-(TE LO), 27-(TE LO) TE(non-std) PNR
COMM	
ATF	tfc 123.2 5NM 5600 ASL



FERMONT QC (Heli)

CSD5

REF	N52 48 22 W67 06 08 Adj NW 23°W UTC-5(4) Elev 2009' A5019
OPR	Heli Fermont Enr 418-287-5666 Reg PPR
PF	B-1 C-2,3,4
FLT PLN	(bil) NOTAM FILE CYGL
FIC	Québec 866-GOMÉTÉO or 866-WXBRIEF (Toll free within Canada) or 866-541-4105 (Toll free within Canada & USA)
SERVICES	
FUEL	JB PNR
PAD DATA	85' x 85'
COMM	
ATF	UNICOM ltd hrs O/T tfc 122.8 5NM 5100 ASL



CAUTION	Mine blasting ops within 6 NM radius N52 44 00 W67 21 00 (aprx 10 NM WSW of A/D) to 8000 ASL. Ctc Québec rdo 126.7 for active blasting times.
----------------	---

CANADA FLIGHT SUPPLEMENT / GPH 205

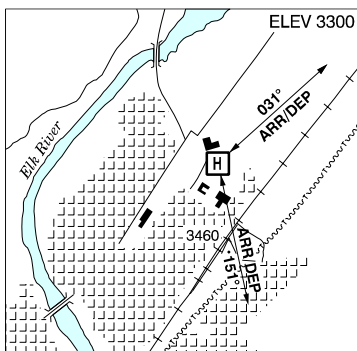
Effective 0901Z 20 November 2008 to 0901Z 15 January 2009

AERODROME/FACILITY DIRECTORY B271

FERNIE (ELK VALLEY HOSP) BC (Heli)

CBP3

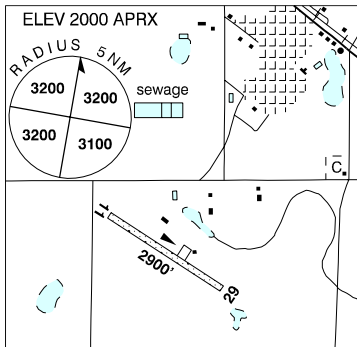
REF	N49 30 W115 04 17°E UTC-7(6) Elev 3300' A5005
OPR	Fernie Hosp 250-423-4453 Cert PPR
PF	B-1,3,4,5,6 C-2
FLT PLN	NOTAM FILE CYXC FIC Kamloops 866-WXBRIEF (Toll free within Canada) or 866-541-4101 (Toll free within Canada & USA)
PAD DATA	40' x 40' asphalt 101' x 98'
COMM	RCO Pacific rdo 126.7 (FISE) ATF tfc 123.2 5NM 5300 ASL
PRO	Arr/dep route 031° & 151° fr heli.
CAUTION	4' fence borders safety area. FATO 75' x 75' unmarked centred on pad. Rising terrain E of railway.



FILLMORE SK

CKN5

REF	N49 52 08 W103 26 43 Adj SW 10°E UTC-6 Elev 2000' aprx A5006 E-16
OPR	R. Boll 306-722-3867 Reg
PF	C-1,2,4,5 D-3,6
FLT PLN	NOTAM FILE CYQR FIC Edmonton 866-WXBRIEF (Toll free within Canada) or 866-541-4102 (Toll free within Canada & USA)
SERVICES	S 5
RWY DATA	Rwy 11(112°)/29(292°) 2900x100 turf RCR Opr Ltd win maint
COMM	ATF tfc 123.2 5NM 5000 ASL



CANADA FLIGHT SUPPLEMENT / GPH 205

Effective 0901Z 20 November 2008 to 0901Z 15 January 2009

B272 AERODROME/FACILITY DIRECTORY

FINLAY AIR PARK NS

CDH3

REF	N43 57 44 W65 59 39 Adj E 18°W UTC-4(3) Elev 145' A5003 F-22	
OPR	Finlay Air Park 902-761-2047 Fax 902-761-2010 Reg	
PF	D-1,2,3,4,5,6	
FLT PLN	NOTAM FILE CYQI	
FIC	Halifax 866-WXBRIEF or (French) 866-GOMÉTÉO (Toll free within Canada) or 866-541-4106 (Toll free within Canada & USA)	
ACC	Moncton 506-867-7176 or 866-480-8200 Fit Plns by Fax 506-867-7180 & include phone numbers where pilot can be reached prior to dep	
RWY DATA	Rwy 16/34 1500x70 turf	
RCR	Opr No win maint	
COMM		
ATF	tfc 123.2 5NM 3200 ASL	
PRO	Seaplane activity on Hoopers Lake next to aerodrome.	
CAUTION	Trees 50 AGL 60' fr each side of rwy full length. Windshear on all apchs can be expected in gusty winds. Rwy width, at times, may be reduced.	

FINLAYSON LAKE YT

CFT3

REF	N61 41 29 W130 46 26 26°E UTC-8(7) Elev 3094' A5028 D-12
OPR	Govt of Yukon 867-634-2450 or 867-996-2334 Reg
FLT PLN	NOTAM FILE CYXY
FIC	Whitehorse 866-WXBRIEF (Toll free within Canada) or 866-541-4107 (Toll free within Canada & USA)
RWY DATA	Rwy 03(031°)/21(211°) 1847x50 gravel
RCR	Opr No maint
COMM	
ATF	tfc 123.2 5NM 6100 ASL
PRO	A/D adj S side Robert Campbell Hwy.
CAUTION	Trees along both sides of rwy, 75' from centreline.

FIREBAG AB See FORT MACKAY / FIREBAG

CANADA FLIGHT SUPPLEMENT / GPH 205

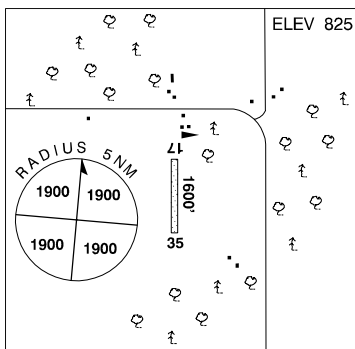
Effective 0901Z 20 November 2008 to 0901Z 15 January 2009

AERODROME/FACILITY DIRECTORY B273

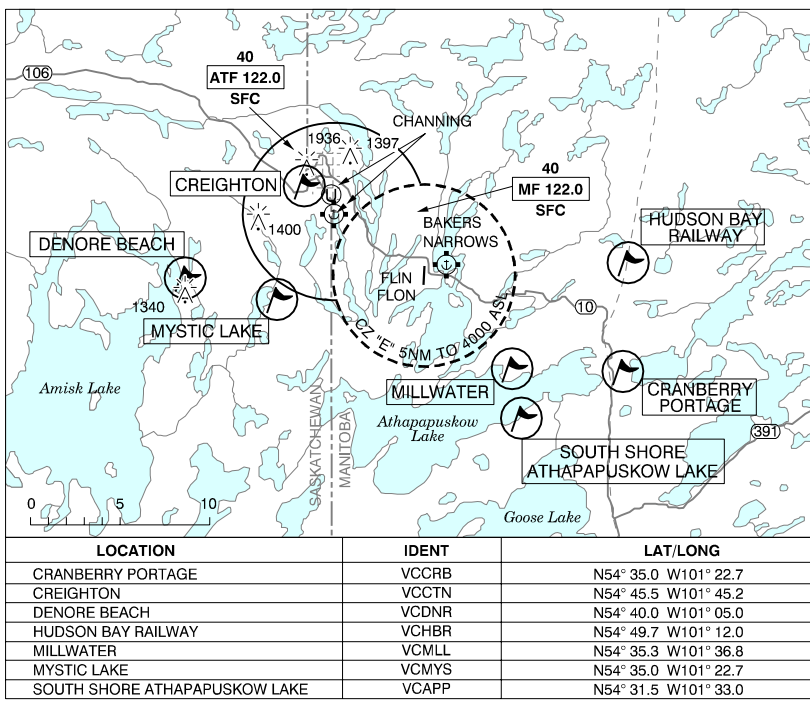
FISHER BRANCH MB

CKX4

REF	N51 05 W97 29 6E 5°E UTC-6(5) Elev 825' A5007 E-16 E-17
OPR	A. Gulay 204-372-6666 Reg PPR
PF	D-1,5
FLT PLN	NOTAM FILE CYDN
FIC	Winnipeg 866-WXBRIEF (Toll free within Canada) or 866-541-4103 (Toll free within Canada & USA)
SERVICES	
FUEL	100LL
OIL	80, 100
RWY DATA	Rwy 17(175°)/35(355°) 1600x90 turf
RCR	Opr
COMM	
ATF	tfc 123.2 5NM 3900 ASL



FLIN FLON VFR TERMINAL PROCEDURES CHART



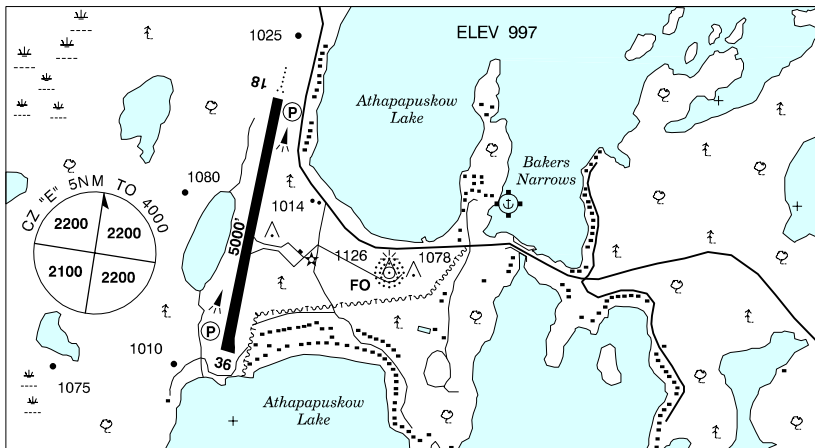
CANADA FLIGHT SUPPLEMENT / GPH 205

Effective 0901Z 20 November 2008 to 0901Z 15 January 2009

B274 AERODROME/FACILITY DIRECTORY

FLIN FLON MB

CYFO



REF	N54 40 41 W101 40 54 8SE 9°E UTC-6(5) Elev 997' A5016 E-16 E-17 LO1 LO3 HI4 CAP
OPR	City 204-687-7447 Cert
PF	A-1,6 D-2,3,4,5 Tml bldg opr 14-03Z± Sun-Fri, 14-24Z± Sat
FLT PLN	NOTAM FILE CYFO
FIC	Winnipeg 866-WXBRIEF (Toll free within Canada) or 866-541-4103 (Toll free within Canada & USA)
WX	METAR 12-24Z±. LWIS (see COMM)
SERVICES	Call out chg may be levied for one or more svcs
FUEL	100LL, JA-1 204-687-7447 12-02Z± Sun-Fri, 12-24Z± Sat O/T 204-687-3896/0624
OIL	All
RWY DATA	Rwy 18(181°)/36(001°) 5000x150 asphalt Rwy 36 up 0.5%
RCR	Opr 12-03Z± Sun-Fri, 12-24Z± Sat CRFI, PLR/PCN
LIGHTING	18-AO(TE ME) P1, 36-SF(TE ME) P1 ARCAL-122.0 type K
COMM	
RCO	Saskatoon rdo 122.0 (RAAS) 14-02Z± Winnipeg rdo 123.275 (FISE)
MF	Saskatoon rdo 14-02Z± O/T ftc 122.0 5NM 4000 ASL (CAR 602.98)
UNICOM	122.8 O/R 12-03Z± Sun-Fri, 12-24Z± Sat
LWIS	(Wind & altimeter) 128.775
NAV	
NDB	FO 250 (M) N54 40 31 W101 40 09 281° 0.5 NM to A/D
CAUTION	Extv bird activity Apr-Oct. Expect severe turbulence & downdrafts with strong W winds. Water A/D 0.7NM ENE.

CANADA FLIGHT SUPPLEMENT / GPH 205

Effective 0901Z 20 November 2008 to 0901Z 15 January 2009

AERODROME/FACILITY DIRECTORY B275

FLORENCEVILLE NB

CCR3

REF	N46 25 34 W67 37 41 0.7SW 19°W UTC-4(3) Elev 508' A5002 A5003 F-21 F-22 LO8 HI6 RCAP	
OPR	McCain Foods Ltd 506-392-3800 Reg PPR	
PF	A-1 C-2,3,4,5,6	
CUST	AOE/15 888-226-7277	
FLT PLN	NOTAM FILE CYFC	
FIC	Halifax 866-WXBRIEF or (French) 866-GOMÉTÉO (Toll free within Canada) or 866-541-4106 (Toll free within Canada & USA)	
ACC	Moncton 506-867-7176 or 866-480-8200 Fit Plns by Fax 506-867-7180 & include phone numbers where pilot can be reached prior to dep	
RWY DATA	Rwy 18(178°)/36(358°) 5400x100 asphalt	
RCR	Opr 13-21Z± O/T R. Brown 506-392-8103 Ltd win maint	
LIGHTING	18-(LO) V2, 36-AS(LO) V2 ARCAL-123.0 for 15 min period, key mic 5 times; 3 times for low ints.	
COMM		
ATF	tfc 122.8 5NM 3500 ASL	
PRO	Activate ARCAL dur day & night ops.	
CAUTION	Hangar complex E of rwy 18 thld within 100' of rwy edge.	

FOGO NL

CDY3

REF	N49 39 27 W54 14 15 4S 22°W UTC-3 1/2 (21/2) Elev 80' A5012 F-22 LO8 CAP	
OPR	Govt of Newfoundland & Labrador 709-292-4326 or 709-256-1048 Reg	
PF	C-1,2,3,4,5	
FLT PLN	NOTAM FILE CYYT	
FIC	Halifax 866-WXBRIEF or (French) 866-GOMÉTÉO (Toll free within Canada) or 866-541-4106 (Toll free within Canada & USA)	
ACC	Gander 709-651-5225 or 888-751-5225. Fit plns by Fax 709-651-5205 & include phone numbers where pilot can be reached prior to dep.	
RWY DATA	Rwy 11(105°)/29(285°) 3000x75 asphalt	
RCR	Opr Ltd win maint PNR	
LIGHTING	11-AS(TE ME), 29-AS(TE ME) ARCAL-122.8 type K key mic 7 times for RILS.	
COMM		
ATF	tfc 123.2 5NM 3100 ASL	

CANADA FLIGHT SUPPLEMENT / GPH 205

Effective 0901Z 20 November 2008 to 0901Z 15 January 2009

B276 AERODROME/FACILITY DIRECTORY

FOGO NL (Cont'd)

CZD3

NAV	NDB 7C 237 (L) N49 39 42 W54 14 43 202° 0.2NM to A/D Pvt Unmonitored
CAUTION	Be alert for wildlife on/near rwy.

FOND-DU-LAC SK

CZFD

REF	N59 20 04 W107 10 55 1N 15°E UTC-6 Elev 814' A5023 D-13 LO1 LO5 RCAP	
OPR	Ministry of Hwys & Infrastructure 306-953-3263 Cert	
PF	B-1,2,5	
FLT PLN	NOTAM FILE CYSF	
FIC	Edmonton 866-WXBRIEF (Toll free within Canada) or 866-541-4102 (Toll free within Canada & USA)	
RWY DATA	Rwy 10(100°)/28(280°) 3800x75 treated gravel	
RCR	Area Office 306-953-3262 or Opr Rwy strength & cond subject to seasonal and/or climatic vars	
LIGHTING	10-(TE LO) P1, 28-(TE LO) P1 ARCAL-123.2 type K Three ints settings avbl for P1 only.	
COMM		
ATF	tfc 123.2 5NM 3900 ASL	
NAV	NDB ZFD 233 (L) N59 20 25 W107 11 14 144° 0.4NM to A/D Unmonitored	

FONTANGES QC

CTU2

REF	N54 33 14 W71 10 24 3.7E 22°W UTC-5(4) Elev 1550' A5019 E-18 LO5 CAP	
OPR	Hydro-Québec 819-853-7301 Fax 819-853-7307 A/D attendant 12-21Z† Thu only Reg PPR	
FLT PLN	(bil) NOTAM FILE CYGL	
FIC	Québec 866-GOMÉTÉO or 866-WXBRIEF (Toll free within Canada) or 866-541-4105 (Toll free within Canada & USA)	
ACC	Montréal 800-633-1353	
RWY DATA	Rwy 10/28 4890x150 gravel	
RCR	Opr 12-21Z† Thu Win maint 12-21Z† Thu	
LIGHTING	10-AS(TE HI) P2, 28-AS(TE HI) P2	
COMM		
ATF	UNICOM (AU) ltd hrs O/T tfc 123.0 5NM 4600 ASL	
A/G	4495	
NAV	NDB 5Q 239 (M) N54 33 36 W71 10 16 at A/D Pvt	
CAUTION	Possibility of win maint eqpt on rwy outside ops hrs.	

CANADA FLIGHT SUPPLEMENT / GPH 205

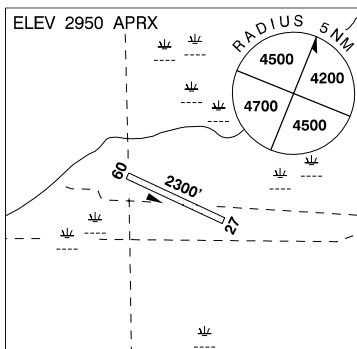
Effective 0901Z 20 November 2008 to 0901Z 15 January 2009

AERODROME/FACILITY DIRECTORY B277

FONTAS AB

CFK3

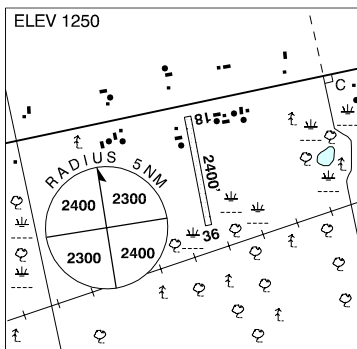
REF	N57 48 W119 27 22°E UTC-7(6) Elev 2950' aprx A5022 D-13
OPR	Alberta Sustainable Resource Development, Forest Protection Division Peace River 780-624-6190 Reg
FLT PLN	NOTAM FILE CYOJ
FIC	Edmonton 866-WXBRIEF (Toll free within Canada) or 866-541-4102 (Toll free within Canada & USA)
RWY DATA	Rwy 09(093°)/27(273°) 2300x50 turf
RCR	Opr Ltd maint. No win maint.
COMM	
ATF	tfc 123.2 5NM 6000 ASL



FORDWICH ON

CPH9

REF	N43 53 17 W80 59 43 1.8NE 9°W UTC-5(4) Elev 1250' A5000 F-21
OPR	H. Douglas 519-335-3802 L. Zurbrigg 519-335-6167 Reg
PF	B-1 C-2 D-3,4,5,6
FLT PLN	NOTAM FILE CYXU
FIC	London 866-WXBRIEF (Toll free within Canada) or 866-541-4104 (Toll free within Canada & USA)
SERVICES	
S	5
RWY DATA	Rwy 18/36 2400x70 turf
RCR	Opr Rwy soft in spring. No win maint.
COMM	
ATF	tfc 122.8 5NM 4300 ASL
CAUTION	Marked P-lines on apch to rwy 18. Trees aprx 50' high on apch to rwy 36. Canada Geese spring nesting.



CANADA FLIGHT SUPPLEMENT / GPH 205

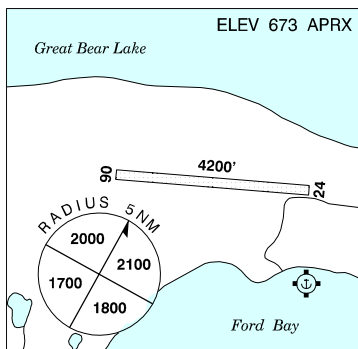
Effective 0901Z 20 November 2008 to 0901Z 15 January 2009

B278 AERODROME/FACILITY DIRECTORY

FORD BAY NT

CBC2

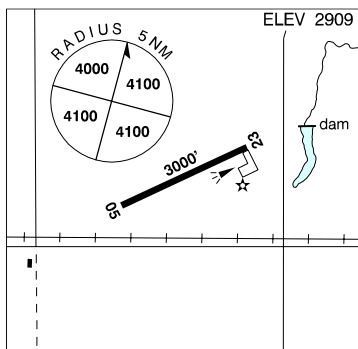
REF	N66 02 15 W124 42 54 29°E UTC-7 Elev 673' aprx A5035 C-10
OPR	Trophy Lodge 204-774-5775 Reg PPR
FLT PLN	NOTAM FILE CYVQ
FIC	North Bay 866-WXBRIEF (Toll free within Canada) or 866-541-4109 (Toll free within Canada & USA)
ACC	Edmonton IFR 888-358-7526 or 780-890-8304/8305
RWY DATA	Rwy 06/24 4200x100 sand
RCR	Opr No win maint
COMM	
ATF	UNICOM ltd hrs O/T tfc 122.8 5NM 3700 ASL



FOREMOST AB

CFD4

REF	N49 28 59 W111 29 40 2W 15°E UTC-7(6) Elev 2909' A5005 E-16 LO2
OPR	Village 403-867-3733 Reg
PF	A-1 C-2,5 D-3,4,6
FLT PLN	NOTAM FILE CYXH
FIC	Edmonton 866-WXBRIEF (Toll free within Canada) or 866-541-4102 (Toll free within Canada & USA)
ACC	Edmonton IFR 888-358-7526 or 780-890-8304/8305
SERVICES	For svcs ctc opr
RWY DATA	Rwy 05(050°)/23(230°) 3000X75 asphalt
RCR	Opr Ltd maint
LIGHTING	05-(TE ME), 23-(TE ME) ARCAL-123.2 type K
COMM	
ATF	tfc 123.2 5NM 6000 ASL



CANADA FLIGHT SUPPLEMENT / GPH 205

Effective 0901Z 20 November 2008 to 0901Z 15 January 2009

AERODROME/FACILITY DIRECTORY B279

FORESTBURG AB

CEF6

REF	N52 34 29 W112 05 03 0.5SW 16°E UTC-7(6) Elev 2334' A5015 E-15 E-16	
OPR	Village of Forestburg 780-582-3668 Reg	
PF	B-1 D-2,4,5,6	
FLT PLN	NOTAM FILE CYQF	
FIC	Edmonton 866-WXBRIEF (Toll free within Canada) or 866-541-4102 (Toll free within Canada & USA)	
ACC	Edmonton IFR 888-358-7526 or 780-890-8304/8305	
RWY DATA	Rwy 10(104°)/28(284°) 2950x75 asphalt	
RCR	Opr Ltd maint	
LIGHTING	10-(TE ME), 28-(TE ME) ARCAL-123.2 type K	
COMM		
ATF	tfc 123.2 5NM 5400 ASL	
NAV		
NDB	7J 261 (L) N52 34 35 W112 05 10 115° 0.2NM to A/D Pvt Unmonitored	

FORESTVILLE QC

CYFE

REF	N48 44 46 W69 05 50 Adj W 19°W UTC-5(4) Elev 293' A5010 E-18 F-21 F-22 L07	
OPR	Town 418-587-2285 Reg A/D clsd Nov 15-May 15.	
PF	B-1 C-2,3,4,5,6	
FLT PLN	(bil) NOTAM FILE CYYY	
FIC	Québec 866-GOMÉTÉO or 866-WXBRIEF (Toll free within Canada) or 866-541-4105 (Toll free within Canada & USA)	
SERVICES	418-587-5455 15 min PNR	
FUEL	100LL, JA-1	
OIL	W100, 15W50	
RWY DATA	Rwy 09/27 5000x100 asphalt 1000' before thld 09 abandoned. Night 3932x100 Town 12-16Z & 17-20Z Mon-Thu, 12-16Z Fri (Jun 15-Sep 1); 13-17Z† & 18-21Z† Mon-Fri (May 15-Jun 14 & Sep 2-Nov 15) No win maint.	
LIGHTING	09-(TE ME), 27-(TE ME) ARCAL-123.2 type J First 1068' rwy 09 unlighted	
COMM		
ATF	tfc 123.2 5NM 3300 ASL	
NAV		
NDB	FE 239 (M) N48 43 48 W69 09 45 090° 2.5NM to thld rwy 09	

CANADA FLIGHT SUPPLEMENT / GPH 205

Effective 0901Z 20 November 2008 to 0901Z 15 January 2009

B280 AERODROME/FACILITY DIRECTORY

FORT ALBANY ON

CYFA

REF	N52 12 05 W81 41 49 Adj SW 12°W UTC-5(4) Elev 48' A5009 A5018 E-18 LO3 HI1 HI4 RCAP	
OPR	Govt of Ontario 807-473-2082 Cert	
PF	C-1,2,4,5	
FLT PLN	NOTAM FILE CYAT London 866-WXBRIEF (Toll free within Canada) or 866-541-4104 (Toll free within Canada & USA)	
RWY DATA	Rwy 10(098°)/28(278°) 3500x100 gravel	
RCR	Opr 13-22Z† Mon-Fri exc hols. Aprt Mgr 705-278-1011 Rwy cond subject to seasonal & climatic vars.	
LIGHTING	10-(TE ME) AP, 28-(TE ME) AP ARCAL-122.8 type K	
COMM	ATF tfc 122.8 5NM 3100 ASL	
NAV	NDB YFA 216 (M) N52 12 23 W81 41 40 210° 0.3NM to A/D	
PRO	Rgt hand circuits rwy 10 (CAR 602.96).	

FORT CHIPEWYAN AB

CYPY

REF	N58 46 02 W111 07 02 3NE 18°E UTC-7(6) Elev 781' A5023 D-13 LO1 HI2 CAP	
OPR	Muni of Wood Buffalo 780-743-7000 Cert Not attended H24	
PF	A-1 avbl 15-24Z† Mon-Fri exc hols D-2,3,5	
FLT PLN	NOTAM FILE CYPY Edmonton 866-WXBRIEF (Toll free within Canada) or 866-541-4102 (Toll free within Canada & USA)	
ACC	Edmonton IFR 888-358-7526 or 780-890-8304/8305	
WX	Legacy AWOS TAF 13-22Z†, issue times: 13, 18Z.	
RWY DATA	Rwy 03(033°)/21(213°) 5000x150 asphalt	Rwy 03 up 1.1%, Rwy 21 up 1.5%
RCR	Opr CRFI, PLR/PCN	
LIGHTING	03-(TE ME) P2, 21-(TE ME) P2 ARCAL-123.2 type K	
COMM	ATF tfc 123.2 5NM 3800 ASL RCO Edmonton rdo 123.475 (FISE) 126.7(bcst)	
NAV	NDB PY 207 (M) N58 45 42 W111 06 32 304° 0.4NM to A/D	
CAUTION	Due to rwy slope, acft at rwy ends may not be visible to pilots on opposite ends of rwy. Wildlife in vic of rwy.	

CANADA FLIGHT SUPPLEMENT / GPH 205

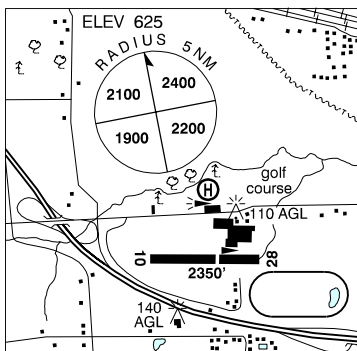
Effective 0901Z 20 November 2008 to 0901Z 15 January 2009

AERODROME/FACILITY DIRECTORY B281

FORT ERIE ON

CNJ3

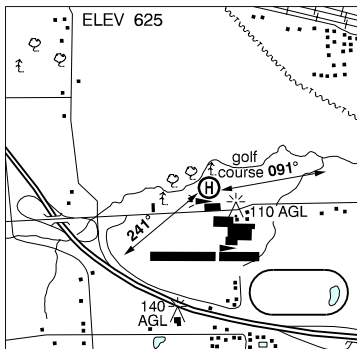
REF	N42 55 00 W78 57 20 11°W UTC-5(4) Elev 625' A5000 F-21
OPR	Fleet Industries 905-871-2100 Ext 238 Reg PPR
PF	B-1 C-2,3,4,5,6
FLT PLN FIC	NOTAM FILE CYSN London 866-WXBRIEF (Toll free within Canada) or 866-541-4104 (Toll free within Canada & USA)
SERVICES S	5
RWY DATA RCR	Rwy 10/28 2350x100 asphalt Thld 28 displ 850'. Opr No win maint
COMM ATF	tfc 123.2 5NM 3600 ASL
CAUTION	Lgtd twr 230 AGL aprx 2.5NM S of rwy.



FORT ERIE (EUROCOPTER CANADA) ON (Heli)

CPG3

REF	N42 55 16 W78 57 21 11°W UTC-5(4) Elev 625' A5000
OPR	Eurocopter Canada Ltd 905-871-7772 Reg PPR
PF	B-1 C-2,3,4,5,6
FLT PLN FIC	NOTAM FILE CYSN London 866-WXBRIEF (Toll free within Canada) or 866-541-4104 (Toll free within Canada & USA)
SERVICES PVT ADV	131.175
PAD DATA	70' dia asphalt Rstd max heli length 46.6'
LIGHTING	LO
PRO	Two arr/dep flt paths brg 241° & 091° fr heli.



CANADA FLIGHT SUPPLEMENT / GPH 205

Effective 0901Z 20 November 2008 to 0901Z 15 January 2009

B282 AERODROME/FACILITY DIRECTORY

FORT FRANCES MUNI ON

CYAG

REF	N48 39 15 W93 26 23 2.2NW 1°E UTC-6(5) Elev 1125' A5007 E-17 LO4 CAP	
OPR	Town 807-274-3930 Cert	
PF	A-1,2 C-3,4,5,6 Tml bldg opr 13-03Z‡ Sun- Fri, 13Z-dark‡ Sat.	
CUST	AOE/15 888-226-7277	
FLT PLN	NOTAM FILE CYHD	
FIC	Winnipeg 866-WXBRIEF (Toll free within Canada) or 866-541-4103 (Toll free within Canada & USA)	
WX	AWOS 218-285-2996 (see COMM)	
SERVICES	13-03Z‡ Sun- Fri, 13Z-dark‡ Sat O/T PNR 807-274-9841. Call out chg may be levied for one or more svcs	
FUEL	100LL, JA-1	
OIL	All exc turbine	
S	1,4,6	
RWY DATA	Rwy 12(125°)/30(305°) 4500x100 asphalt Rwy 03(035°)/21(215°) 2600x75 asphalt	
RCR	Opr A/D maintained 13-03Z‡ Sun-Fri, 13Z‡ to SS Sat PLR/PCN	
LIGHTING	03-(TE LO), 12-AS(TE ME) P1, 21-(TE LO), 30-AS(TE ME) P1 ARCAL-122.7 type K	
COMM		
ATF	UNICOM ltd hrs O/T tfc 122.8 5NM 4200 ASL	
AWOS	120.0 (at Falls Intl)	
NAV		
NDB	YAG 376 (L) N48 41 23 W93 32 21 116° 4.1NM to thld 12	
VORTAC	INTERNATIONAL FALLS INL 111.0 Ch 47 N48 33 57 W93 24 20 343° 5.2NM to A/D	
CAUTION	Aerobatics may be in progress over aprt 4100 ASL & below.	

FORT GOOD HOPE NT

CYGH

REF	N66 14 27 W128 39 03 1SW 29°E UTC-7(6) Elev 268' A5034 C-10 LO5 HI2 CAP	
OPR	Govt of Northwest Territories 867-587-2451 Emerg/Incident rpt ctc Govt of Northwest Territories 877-989-1400 Cert	
PF	C-1,2,4,5	
FLT PLN	NOTAM FILE CYGH & CZNB	
FIC	North Bay 866-WXBRIEF (Toll free within Canada) or 866-541-4109 (Toll free within Canada & USA)	
ACC	Edmonton IFR 888-358-7526 or 780-890-8304/8305	
CARS	867-598-2241 Ltd hrs (see COMM)	
WX	METAR dur CARS hrs of ops (see COMM). TAF 15-24Z‡ Mon-Sat, issue times: 1510, 1740Z (DT 1410, 1740Z).	

CANADA FLIGHT SUPPLEMENT / GPH 205

Effective 0901Z 20 November 2008 to 0901Z 15 January 2009

AERODROME/FACILITY DIRECTORY B283

FORT GOOD HOPE NT (Cont'd)

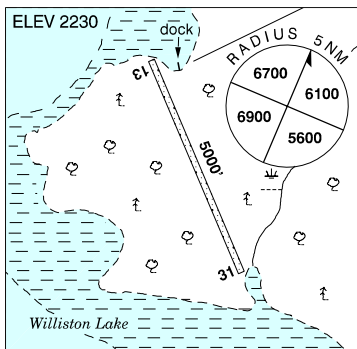
CYGH

RWY DATA RCR	Rwy 06°(062°)/24(242°) 3000x98 gravel Rwy 06 up 0.48% CARS Win maint 16-24Z± Mon-Fri exc hols, O/T 2 hrs PNR, 867-587-2555. Call out chg may be levied.
LIGHTING	06-AS(TE ME) AP, 24-AS(TE ME) AP ARCAL-122.1 type K APAPI avbl only dur CARS hrs ops.
COMM RCO MF APRT RDO	Arctic rdo 126.7 (FISE) aprt rdo ltd hrs O/T tfc 122.1 5NM 3300 ASL (CAR 602.98) 122.1 (V) 14-24Z± Mon-Sat, 14-19Z± Sun, exc hols
NAV NDB VOR/DME	GH 266 (M) N66 15 45 W128 37 17 1.4NM to A/D YGH 112.3 Ch 70 N66 14 10 W128 37 22 (303') at A/D

FORT GRAHAM BC

CBW3

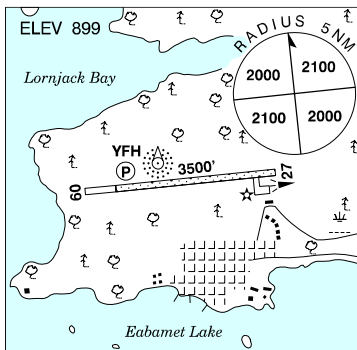
REF	N56 31 18 W124 28 06 23°E UTC-8(7) Elev 2230' A5022 E-15
OPR	Ft. Graham Fishing Lodge 250-997-5928/5435 after tone dial 88368 wait min 1 minute for answer. Landline 250-783-9172 Reg
FLT PLN FIC	NOTAM FILE CYXS Kamloops 866-WXBRIEF (Toll free within Canada) or 866-541-4101 (Toll free within Canada & USA)
RWY DATA RCR	Rwy 13(134°)/31(314°) 5000x40 gravel Opr No win maint
COMM ATF	tfc 123.2 5NM 5300 ASL



FORT HOPE ON

CYFH

REF	N51 33 43 W87 54 28 Adj N 6°W UTC-5(4) Elev 899' A5008 E-17 LO3 LO4 RCAP
OPR	Govt of Ontario 807-473-2082 Cert
PF	C-1,2,4,5
FLT PLN FIC	NOTAM FILE CYLH Winnipeg 866-WXBRIEF (Toll free within Canada) or 866-541-4103 (Toll free within Canada & USA)
RWY DATA RCR	Rwy 09(090°)/27(270°) 3500x100 gravel Rwy 27 down 1% last 2900' Opr 13-22Z± Mon-Fri exc hols. 807-242-8151. Call out chg may apply. Rwy strength & cond subject to seasonal & climatic var.
LIGHTING	09-(TE LO) AP, 27-(TE LO) ARCAL-122.8 type K for APAPI, rwy lgts low ints only
COMM ATF	tfc 123.2 5NM 3900 ASL



CANADA FLIGHT SUPPLEMENT / GPH 205

Effective 0901Z 20 November 2008 to 0901Z 15 January 2009

B284 AERODROME/FACILITY DIRECTORY

FORT HOPE ON (Cont'd)

CYFH

NAV	NDB YFH 266 (M) N51 33 52 W87 54 40 at A/D
CAUTION	Due to rwy slope acft at rwy ends may not be visible to pilots on opposite ends of rwy.

FORT LANGLEY BC

CBQ2

REF	N49 10 04 W122 33 17 Adj 19°E UTC-8(7) Elev 30' aprx VTA A5004 E-15 LO2 T1	
OPR	Fort Langley Avn 604-888-1922 PPR Reg	
PF	A-1 C-2,3,4,5 D-6	
FLT PLN	FIC NOTAM FILE CYVR Kamloops 866-WXBRIEF (Toll free within Canada) or 866-541-4101 (Toll free within Canada & USA)	
SERVICES	OIL All S 1,2,3,4,5	
RWY DATA	Rwy 08(078)/26(258) 3769X60 asphalt	
RCR	Opr 604-888-1922 Ltd win maint	
LIGHTING	08-(TE LO) 26-(TE LO) ARCAL-123.2 TYPE J	
COMM	ATF tfc 123.2 1NM 1500 ASL	
NAV	VOR PITT MEADOWS YPK 112.4 N49 12 57 W122 42 54 (44') 093° 7.1NM to A/D	
PRO	All circuits to N 1000 ASL. No training flights. Avoid overflight of community to W. Procedures for crossing the southern Strait of Georgia within Tml Class C airspace refer to Vancouver Intl, VTPC for Crossing the Southern Strait of Georgia.	
CAUTION	Trees to 80 AGL along N side	

FORT LIARD NT

CYJF

REF	N60 14 08 W123 28 12 Adj 25°E UTC-7(6) Elev 708' A5022 A5029 LO5 CAP	
OPR	Govt of Northwest Territories 867-695-2471 Contractor 867-770-3361 Emerg/Incident rpt ctc Govt of Northwest Territories 877-989-1400 Cert	
PF	B-1 C-2,4,5	
FLT PLN	FIC NOTAM FILE CYJF North Bay 866-WXBRIEF (Toll free within Canada) or 866-541-4109 (Toll free within Canada & USA)	
ACC	Edmonton IFR 888-358-7526 or 780-890-8304/8305	
CARS	867-770-3171 Ltd hrs (see COMM)	
WX	METAR dur CARS hrs of ops (see COMM).	

CANADA FLIGHT SUPPLEMENT / GPH 205

Effective 0901Z 20 November 2008 to 0901Z 15 January 2009

AERODROME/FACILITY DIRECTORY B285

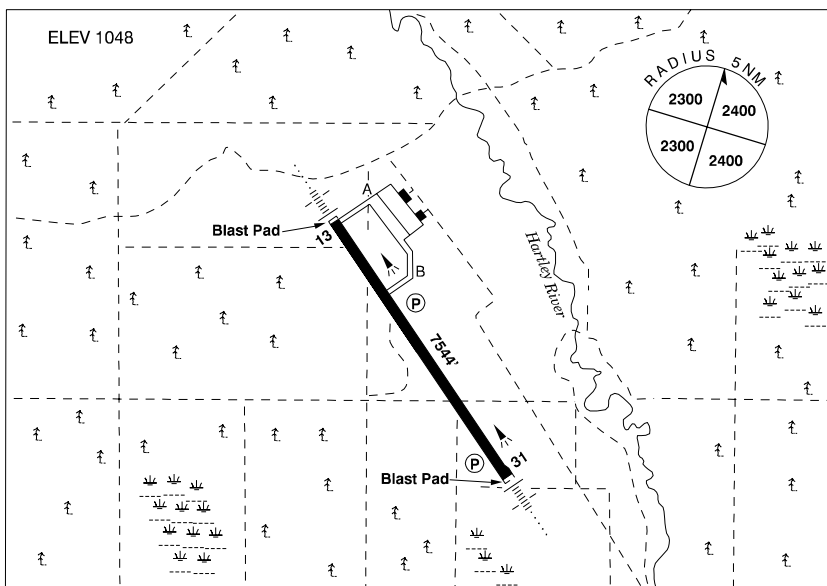
FORT LIARD NT (Cont'd)

CYJF

RWY DATA RCR	Rwy 02(024°)/20(204°) 2946x98 gravel Regional APM 867-695-2491 Win maint 17-24Z± Mon-Fri exc hols O/T 2 hr PNR. Call out chg may be levied.
LIGHTING	02-AS(TE LO) AP 3.3°, 20-AS(TE LO) AP 3.3° ARCAL-122.1 type J. Ngt ops not recommended unless hazard bcn oprg.
COMM MF APRT RDO	aprt rdo ltd hrs O/T tfc 122.1 5NM 3800 ASL (CAR 602.98) 122.1 (V) 15-23Z± Mon-Fri exc hols
NAV NDB	YJF 368 (M) N60 14 18 W123 27 56 at A/D
PRO	Rgt hand circuits rwy 20 (CAR 602.96).
CAUTION	Marked P-line 196 AGL crossing Petitot River aprx 900' SE thld rwy 02.

FORT MACKAY / ALBIAN AB

CAL4



REF	N57 13 26 W111 25 08 8ENE 17°E UTC-7(6) Elev 1048' A5023 D-13 E-16 LO1 HI2 HI3 CAP
OPR	Shell Canada LTD 780-713-4585 Reg PPR
FLT PLN FIC	NOTAM FILE CYMM Edmonton 866-WXBRIEF (Toll free within Canada) or 866-541-4102 (Toll free within Canada & USA)
ACC WX	Edmonton IFR 888-358-7526 or 780-890-8304/8305 AWOS (Pvt) (see COMM)
RWY DATA	Rwy 13(129°)/31(309°) 7544x148 asphalt Rwy 13 up 0.35%

CANADA FLIGHT SUPPLEMENT / GPH 205

Effective 0901Z 20 November 2008 to 0901Z 15 January 2009

B286 AERODROME/FACILITY DIRECTORY

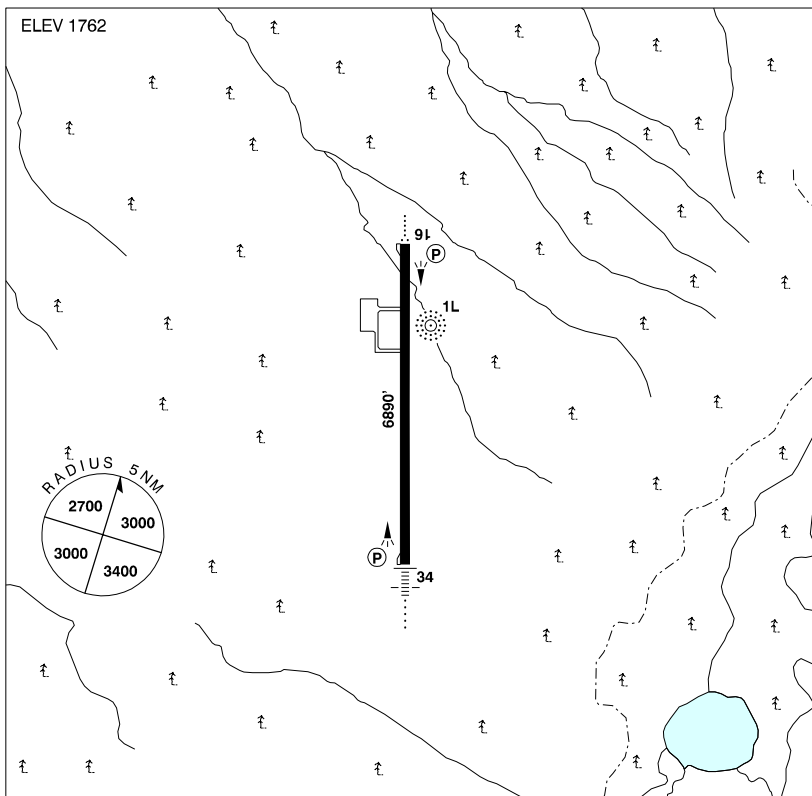
FORT MACKAY / ALBIAN AB (Cont'd)

CAL4

LIGHTING	13-AN(TE HI)P2, 31-AN(TE HI)P2 ARCAL-123.3 Type K
COMM	
RCO	Edmonton rdo (Fort McMurray) 123.55(FISE) 126.7(bcst) (Acft may not receive RCO on gnd)
ATF	UNICOM 123.3 5NM 4100 ASL
AWOS (Pvt)	122.975

FORT MACKAY / FIREBAG AB

CFG6



REF	N57 16 33 W 110 58 36 22 ENE 17°E UTC -(6) ELEV 1762' A5023 D-13 E-16 LO1 HI2 RCAP
OPR	Suncor Energy Inc. 403-275-1185 Reg PPR
FLT PLN	NOTAM FILE CYMM
FIC	Edmonton 866-WXBRIEF (Toll free within Canada) or 866-541-4102 (Toll free within Canada & USA)
ACC	Edmonton IFR 888-358-7256 or 780-890-8304/8305
WX	AWOS (Pvt)
RWY DATA	Rwy 16(163°)/34(343°) 6890x148 Asphalt Rwy 34 down 1%
RCR	Opr
LIGHTING	16 AO(TE HI)P2, 34 AN(TE HI)P2 ARCAL-122.8 type K

CANADA FLIGHT SUPPLEMENT / GPH 205

Effective 0901Z 20 November 2008 to 0901Z 15 January 2009

AERODROME/FACILITY DIRECTORY B287

FORT MACKAY / FIREBAG AB (Cont'd)

CFG6

COMM	RCO	Edmonton rdo (Fort McMurray) 123.55 (FISE) 126.7 (bcst) (Actf may not receive RCO on gnd)
	ATF	UNICOM (AU) ltd hrs O/T Firebag tfc 122.8 5 NM 4800 ASL
NAV	NDB	1L 400 (L) N57 16 50 W110 58 20 at A/D Pvt
	DME	SR 110.5 Ch 42 N57 16 08 W110 58 27 (1760') at A/D Pvt Unmonitored
	ILS	ISR 110.5 (Rwy 34) Pvt Unmonitored

FORT MACKAY / HORIZON AB

CYNR

REF	N57 22 54 W111 42 04 12 NNW 18E UTC-7(6) Elev 911' A5023 LO1 HI2 HI3 RCAP	
OPR	Canadian Natural Resources Ltd 780-828-2719/2903 Reg PPR	
FLT PLN	NOTAM FILE CYMM	
ACC	Edmonton IFR 888-358-7526 or 780-890-8304/8305	
WX	AWOS (Pvt) (see COMM).	
RWY DATA	Rwy 17(170°)/35(350°) 6000x150 asphalt	
RCR	Opr call Horizon Security 780-828-3002 RSC/CRFI avbl 13-07Z†	
LIGHTING	17-(T ME)P2, 35-AO(T ME)P2 ARCAL-122.7 type K	
COMM	RCO	Edmonton rdo (Fort McMurray) 123.55 (FISE) 126.7 (bcst) (Actf may not receive RCO on gnd)
	ATF	Horizon tfc 122.7 5NM 4000 ASL
AWOS (Pvt)	122.55	
PRO	Rgt hand circuits rwy 17	
CAUTION	Numerous towers & cranes SW A/D	

FORT MACLEOD AB

CEY3

REF	N49 42 W113 25 1SW 16°E UTC-7(6) Elev 3138' A5005 E-15 E-16	
OPR	Town 403-553-4425 Reg	
PF	B-1 C-2,3,4,5,6	
ACC	Edmonton IFR 888-358-7526 or 780-890-8304/8305	
RWY DATA	Rwy 06(059°)/24(239°) 3000x75 asphalt	
RCR	Opr Ltd maint	
LIGHTING	06-(TE ME), 24-(TE ME) ARCAL-123.2 type K	

CANADA FLIGHT SUPPLEMENT / GPH 205

Effective 0901Z 20 November 2008 to 0901Z 15 January 2009

B288 AERODROME/FACILITY DIRECTORY

FORT MACLEOD AB (Cont'd)

CEY3

COMM	
ATF	tfc 123.2 5NM 6200 ASL
PRO	Rgt hand circuits rwy 06 (CAR 602.96).
CAUTION	Antenna twr 2.1NM NW A/D 300 AGL and a wind turbine generator 2.4NM SW A/D 363 AGL.

FORT MACLEOD (ALCOCK FARM) AB

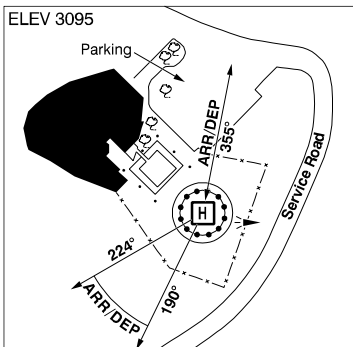
CFM8

REF	N49 35 W113 18 16°E UTC-7(6) Elev 3340' A5005 E15 E16
OPR	Jim Alcock 403-553-2395 Reg PPR
FLT PLN	NOTAM FILE CYQL
FIC	Edmonton 866-WXBRIEF (Toll free within Canada) or 866-541-4102 (Toll free within Canada & USA)
RWY DATA	Rwy 07(070°)Y25(250°) 3720x100 turf
RCR	Opr
CAUTION	Pwr lines 25' high 245' E thld rwy 25 marked with orange & white spheres. Trees 440' W thld rwy 07 approx 25' high.

FORT MACLEOD (HOSP) AB (Heli)

CFM9

REF	N49 43 32 W113 23 32 Adj 16°E UTC-7(6) Elev 3095' A5005
OPR	Chinook Health Region 403-553-4487 Cert PPR
FLT PLAN	NOTAM FILE CYQL
FIC	Edmonton 866-WXBRIEF (Toll free within Canada) or 866-541-4102 (Toll free within Canada & USA)
ACC	Edmonton IFR 888-358-7526 or 780-890-8304/8305
PAD DATA	86' dia concrete 115' dia max length 57.4'
LIGHTING	RY(LO) green PNR
COMM	
ATF	tfc 123.2 5NM 6200 ASL
PRO	Arr/dep btwn 190°-224° fr heli & single arr/dep path 355° fr heli. Heli max length 57'
CAUTION	P-line E of heli

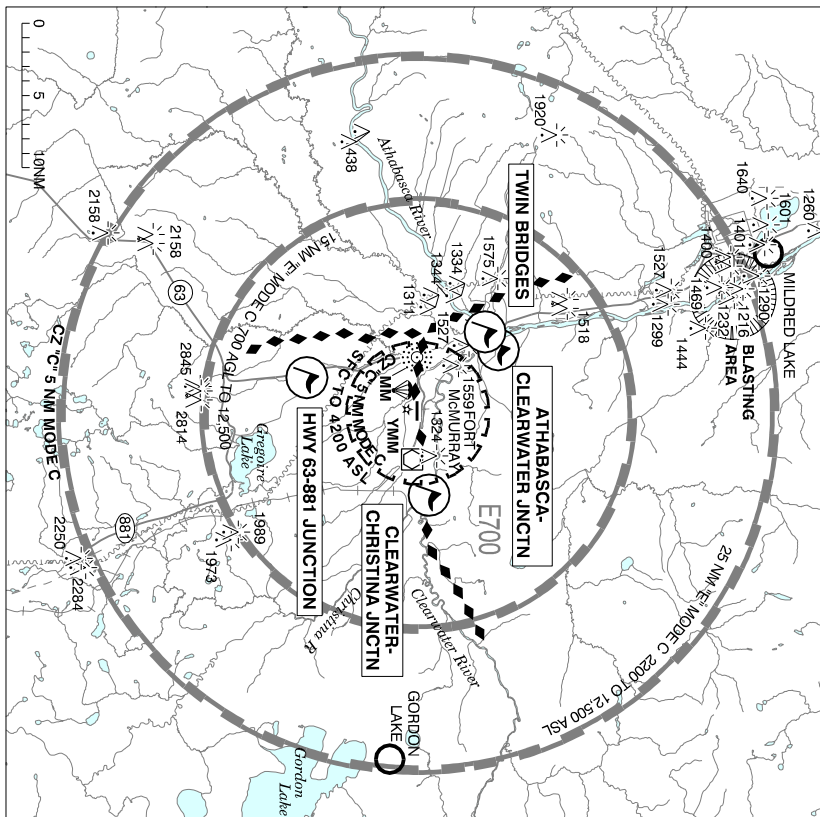


CANADA FLIGHT SUPPLEMENT / GPH 205

Effective 0901Z 20 November 2008 to 0901Z 15 January 2009

AERODROME/FACILITY DIRECTORY B289

FORT McMURRAY VFR TERMINAL PROCEDURES CHART



LOCATION	IDENT	LAT/LONG
ATHABASCA - CLEARWATER JUNCTION	VCABA	N56°44.0 W111°23.2
CLEARWATER - CHRISTINA JUNCTION	VCCLW	N56°39.9 W111°03.1
HWY 63 - 881 JUNCTION	VCJCT	N56°31.5 W111°18.1
TWIN BRIDGES	VCTWB	N56°43.9 W111°23.6

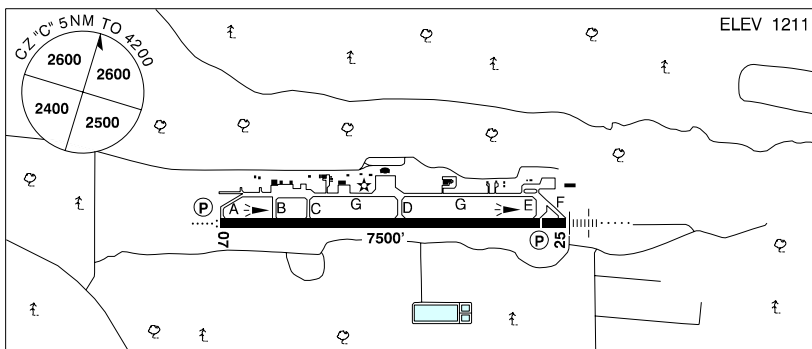
CANADA FLIGHT SUPPLEMENT / GPH 205

Effective 0901Z 20 November 2008 to 0901Z 15 January 2009

B290 AERODROME/FACILITY DIRECTORY

FORT McMURRAY AB

CYMM



REF	N56 39 12 W111 13 24 7SE 17°E UTC-7(6) Elev 1211' A5023 D-13 E-16 LO1 HI2 HI3 CAP
OPR	Regional Municipality of Wood Buffalo 780-790-3900 Cert
PF	A-1,2,3,6 C-4,5
FLT PLN	NOTAM FILE CYMM
FIC	Edmonton 866-WXBRIEF (Toll free within Canada) or 866-541-4102 (Toll free within Canada & USA)
ACC	Edmonton IFR 888-358-7526 or 780-890-8304/8305
WX	METAR H24. TAF H24, issue times: 01, 07, 13, 19Z. Legacy AWOS (see COMM)
PIK	Borealis Air Svc, Main Floor, airside access.
SERVICES	Call out chg for after hrs svcs. Ramp fees 24 hrs.
FUEL	80, 100, JA-1, JB, FSII, SP, HPR (CON S IP JA-1, FSII)
OIL	All
S	1,2,3,4,5,6
ARFF	6 13-09Z‡ O/T call out chg PNR. Outside CAT 6 hrs PPR for acft 20 seats & abv, exc for diversions or as an altn A/D
SUP FL	D & A-ice
PVT ADV	Borealis Air (Esso) 123.0 15-24Z‡ 780-790-0270; Executive Flt Centre 122.35 14-02Z‡ 780-791-9881; Progressive Aviation (Shell) 122.8 14-23Z‡ 780-742-0075.
MIL CON	Progressive Aviation Centre Ltd. (Shell) 780-742-0075
RWY DATA	Rwy 07(073°)/25(253°) 7500x150 asphalt Thld 25 displ 500'
APRON	ATB apron: Prkg S side apron, aircraft parking stand, max four hours. no overnight Prkg. Max wingspan 70.34 ft. N side apron, aircraft prkg stand, sched traffic prkg only. All acft will be marshalled in and pushback is mandatory. No exceptions.
RCR	Opr Maint 13-05Z‡ Mon-Sat, 17-05Z‡ Sun, PNR O/T call out fee may be levied. CRFI, PLR/PCN
LIGHTING	07-AO(TE HI) P2, 25-AN(TE HI) P2 ARCAL - 118.1 type K 0615-1345Z‡

CANADA FLIGHT SUPPLEMENT / GPH 205

Effective 0901Z 20 November 2008 to 0901Z 15 January 2009

AERODROME/FACILITY DIRECTORY B291

FORT McMURRAY AB (Cont'd)

CYMM

COMM	
RADIO	McMurray rdo 118.1 236.6 (E) 0115-0615Z† Mon-Fri; 2200-0615Z† Sat-Sun
RCO	Peace River rdo 118.1 (RAAS) 0615-1345Z† Edmonton rdo 123.55 (FISE) 126.7 (bcst)
ATIS	128.5 1345-0615Z†
CLNC DEL	121.9 ltd hrs
GND	121.9 1345-0115Z† Mon-Fri 1345-2200Z† Sat-Sun
TWR	118.1 236.6 (E) 1345-0115Z† Mon-Fri 1345-2200Z† Sat-Sun
MF	118.1 McMurray rdo 0115-0615Z† Mon-Fri, 2200-0615Z† Sat-Sun; Peace River rdo 0615-1345Z† 5NM 4200 ASL (CAR 602.98)
PAL	Edmonton Ctr 135.7
Legacy AWOS	128.5 0615-1345Z†
NAV	
NDB	MM 388 (M) N56 39 14 W111 20 10 072° 3.3NM to A/D
VOR/DME	YMM 112.0 Ch 57 N56 38 50 W111 07 20 (1205') 260° 2.8NM to A/D
ILS	IMM 109.9 (Rwy 25-07)
PRO	Rgt hand circuits rwy 07 (CAR 602.96). Transponder MODE C required within the 25 NM Fort McMurray Class E control area extension, the 15 NM Class E transition area & 5 NM control zone. Flt Pln open and close with Edmonton FIC on 123.55 (FISE).
CAUTION	Parachute ldg area 0.5NM SW thld 07.

FORT McMURRAY / MILDRED LAKE AB

CER4

REF	N57 03 20 W111 34 26 Adj NE 18°E UTC-7(6) Elev 1045' A5023 D-13 LO1 HI2 HI3 RCAP	
OPR	Syncrude Canada Ltd 780-790-5094 Reg 1 hr PPR	
PF	A-1 D-2,3,4,5,6	
FLT PLN	NOTAM FILE CYMM	
FIC	Edmonton 866-WXBRIEF (Toll free within Canada) or 866-541-4102 (Toll free within Canada & USA)	
ACC	Edmonton IFR 888-358-7526 or 780-890-8304/8305	
SERVICES		
PVT ADV	Syncrude Security 123.2	
RWY DATA	Rwy 11(113°)/29(293°) 5438x100 treated gravel	
RCR	Opr Call Syncrude Security 123.2 for RCR & advsy. Expect delays for snow removal.	
LIGHTING	11-(T ME), 29-(T ME) ARCAL-123.2 type K	
COMM		
RCO	Edmonton rdo 123.55 (FISE) 126.7 (bcst)	
ATF	Mildred Lake tfc 123.2 5NM 4100 ASL	
CAUTION	Unlighted dyke 3000' NW of rwy 11 on centre line 150' above thld. Numerous twrs/cranes in vic A/D.	

CANADA FLIGHT SUPPLEMENT / GPH 205

Effective 0901Z 20 November 2008 to 0901Z 15 January 2009

B292 AERODROME/FACILITY DIRECTORY

FORT McPHERSON NT

CZFM

REF	N67 24 27 W134 51 38 2S 30°E UTC-7(6) Elev 116' A5034 C-9 LO5 CAP	
OPR	Govt of Northwest Territories 867-777-7198 Emerg/Incident rpt ctc Govt of Northwest Territories 867-678-0791 or 877-989-1400 Cert	
PF	C-1,2,3,4,5	
FLT PLN	NOTAM FILE CZFM	
FIG	North Bay 866-WXBRIEF (Toll free within Canada) or 866-541-4109 (Toll free within Canada & USA)	
ACC	Edmonton IFR 888-358-7526 or 780-890-8304/8305	
CARS	867-952-2121 Ltd hrs (see COMM)	
WX	METAR dur CARS hrs of ops (see COMM). TAF 1530-24Z† Mon-Sat, issue times: 16, 19Z (DT 15, 19Z). TAF 1630-20Z† Sun, issue times: 17Z†.	
RWY DATA	Rwy 11(114°)/29(294°) 3500x100 gravel	
RCR	Oprr Win maint 15-24Z† Mon-Fri exc hols O/T 1 hr PNR ctc 867-952-2901/678-0791. Call out chg will be levied. PLR/PCN	
LIGHTING	11-AS(TE LO) V1, 29-AS(TE LO) V1 ARCAL-122.1 type J	
COMM		
MF	aprt rdo ltd hrs O/T tfc 122.1 5NM 3100 ASL (CAR 602.98)	
APRT RDO	122.1 (V) 14-24Z† Mon-Sat, 15-20Z† Sun, exc hols	
NAV		
NDB	ZFM 373 (M) N67 24 37 W134 52 25 at A/D	

FORT NELSON BC

CYYE

REF	N58 50 11 W122 35 49 3.8ENE 24°E UTC-8(7) Elev 1253' A5022 A5099 D-12 LO1 LO5 HI2 CAP	
OPR	Northern Rockies Regional District 250-774-6454 Cert	
PF	A-1,6 B-2 D-3,4,5	
FLT PLN	NOTAM FILE CYYE	
FIG	Edmonton 866-WXBRIEF (Toll free within Canada) or 866-541-4102 (Toll free within Canada & USA)	
ACC	Edmonton IFR 888-358-7526 or 780-890-8304/8305	
WX	METAR H24.	
PIK	TAF H24, issue times: 01, 07, 13, 19Z. Sky North Avn Fuels, ATCO trailer, airside access.	
SERVICES		
FUEL	100LL, JA-1, HPR (CON S IP FSII)	
OIL	All	
S	1,2,3,4,5,6	
SUP FL	D & A-ice	
JASU	Elect start 28V 800 amp, 28V 1500 amp, CE 16	
PVT ADV	Sky North Avn Fuels 250-774-2150 122.35	

CANADA FLIGHT SUPPLEMENT / GPH 205

Effective 0901Z 20 November 2008 to 0901Z 15 January 2009

AERODROME/FACILITY DIRECTORY B293

FORT NELSON BC (Cont'd)

CYYE

RWY DATA	Rwy 03(033°)/21(213°) 6400x200 asphalt Rwy 08(077°)/26(257°) 4068x77 asphalt
RCR	Opr, ltd hrs CRFI, PLR/PCN
LIGHTING	03-AN (TE HI), 21-AO (non-std 2000') AS(TE HI) P2
COMM	
RADIO	122.2 295.0 (E) (emerg only 250-774-3124)
RCO	Edmonton rdo 123.55 (FISE) 126.7 (bcst)
MF	rdo 122.2 5NM 4300 ASL (CAR 602.98)
PAL	Edmonton Ctr 132.87 134.85 290.6
VDF	122.2
NAV	
VOT	111.8
NDB	YE 382 (M) N58 47 45 W122 43 21 033° 4.0NM to thld rwy 03
VOR/DME	YYE 112.9 Ch 76 N58 53 30 W123 00 58 (2040') 081° 13.4NM to A/D
ILS	IYE 110.3 (Rwy 03)
CAUTION	Radiosonde balloon launches fr N58 50 W122 36 (0.5NM NE thld rwy 21) at 1115Z-1129Z & 2315Z-2329Z dly.

FORT NELSON / GORDON FIELD BC

CBL3

REF	N58 49 W122 47 4W 24°E UTC-8(7) Elev 1625' A5022 A5099 D-12
OPR	K. or R. Rombough 250-774-6216 Reg
PF	C-1,2,3,4,5,6
FLT PLN	NOTAM FILE CYYE
FIC	Edmonton 866-WXBRIEF (Toll free within Canada) or 866-541-4102 (Toll free within Canada & USA)
ACC	Edmonton IFR 888-358-7526 or 780-890-8304/8305
SERVICES	
S	4,5
RWY DATA	Rwy 10/28 4000x50 turf
RCR	Opr Ltd win maint. Rwy slippery when wet.
COMM	
RCO	Edmonton rdo 123.55 (FISE) 126.7 (bcst)
MF	rdo 122.2 5NM centered on Fort Nelson A/D 5.9NM NE 4300 ASL (CAR 602.98)
CAUTION	Trees to 25 AGL within 20' of rwy edge entire length of rwy on S side. Ditch within 20' of rwy edge on N side.

CANADA FLIGHT SUPPLEMENT / GPH 205

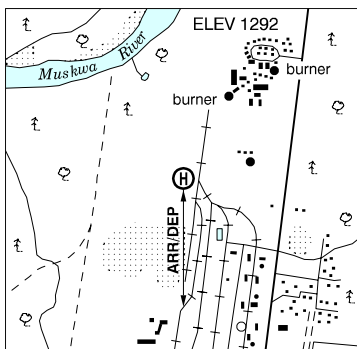
Effective 0901Z 20 November 2008 to 0901Z 15 January 2009

B294 AERODROME/FACILITY DIRECTORY

FORT NELSON (GUARDIAN) BC (Heli)

CFN8

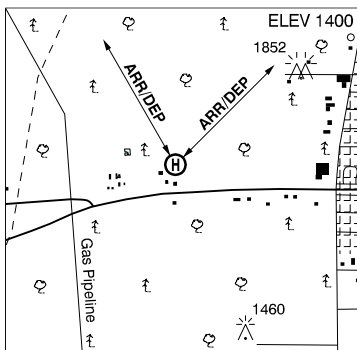
REF	N58 45 08 W122 41 13 3SE 24°E UTC-8(7) Elev 1292' A5022
OPR	Guardian Helicopters Inc 250-774-2445 Reg PNR
PF	A-1 C-2,3,4,5,6
FLT PLN	NOTAM FILE CYEE
FIC	Edmonton 866-WXBRIEF (Toll free within Canada) or 866-541-4102 (Toll free within Canada & USA)
ACC	Edmonton IFR 888-358-7526 or 780-890-8304/8305
SERVICES	
FUEL	JB
OIL	All
PAD DATA	50' x 50' 82' x 82' concrete
COMM	
RCO	Edmonton rdo 123.55 (FISE) 126.7 (bcst)
MF	rdo 122.2 5NM centred on Fort Nelson A/D 4300 ASL (CAR 602.98)
PRO	Arr/dep fr S.
CAUTION	Fort Nelson A/D 5.8NM N.



FORT NELSON (MILE 301) BC (Heli)

CFN2

REF	N58 48 19 W122 43 45 26°E UTC-8(7) Elev 1400' A5022
OPR	Dominion Helicopters 250-774-7666 Reg PNR
PF	A-1 C-1,2,3,4,5,6
FLT PLN	NOTAM FILE CYEE
FIC	Edmonton 866-WXBRIEF (Toll free within Canada) or 866-541-4102 (Toll free within Canada & USA)
ACC	Edmonton IFR 888-358-7526 or 780-890-8304/8305
SERVICES	
FUEL	JB 16-01Z‡
OIL	Mobile Jet II/Mobile Jet 254
S	4,5 (16-01Z‡), 6 (16-01Z‡)
PVT ADV	250-774-7666 15-01Z‡
PAD DATA	56' x 42' concrete 75' x 1500' grass 8000 lbs
RCR	Opr 16-01Z‡
COMM	
MF	Fort Nelson rdo 122.2 5NM 4300 ASL centred on Fort Nelson A/D
PRO	Apch fr NE and NNW.
CAUTION	Trws to NE and W.



FORT NORMAN NT — See TULITA

Sep 09

CANADA FLIGHT SUPPLEMENT / GPH 205

Effective 0901Z 20 November 2008 to 0901Z 15 January 2009

AERODROME/FACILITY DIRECTORY B295

FORT PROVIDENCE NT

CYJP

REF	N61 19 09 W117 36 22 3E 23°E UTC-7(6) Elev 524' A5029 D-13 LO5	
OPR	Dept of Transportation (Fort Providence) 867-699-4391 Emerg/Incident rpt ctc Govt of Northwest Territories 867-875-7316 or 877-989-1400 Cert	
PF	C-1,2,3,4,5	
FLT PLN	NOTAM FILE CYJP	
FIC ACC	North Bay 866-WXBRIEF (Toll free within Canada) or 866-541-4109 (Toll free within Canada & USA) Edmonton IFR 888-358-7526 or 780-890-8304/8305	
RWY DATA RCR	Rwy 13(130°)/31(310°) 2998x100 gravel Opr RCR & win maint avbl 15-16Z± Mon, Wed, Fri excl statutory hols. O/T RCR win maint avbl 1 hr PNR ctc 867-699-3088/3533. Call out chg may be levied.	
LIGHTING	13-(TE LO), 31-(TE LO) ARCAL-123.2 type J	
COMM ATF	tfc 123.2 5NM 3500 ASL	
CAUTION	Buffalo may be on or in vic rwy.	

FORT RESOLUTION NT

CYFR

REF	N61 10 51 W113 41 23 21°E UTC-7(6) Elev 526' A5030 D-13 LO5 CAP	
OPR	Govt of Northwest Territories 867-872-2007 Emerg/Incident rpt ctc Govt of Northwest Territories 867-872-0207 or 877-989-1400 Cert	
PF	C-1,2,3,4,5	
FLT PLN	NOTAM FILE CYFR	
FIC ACC CARS WX	North Bay 866-WXBRIEF (Toll free within Canada) or 866-541-4109 (Toll free within Canada & USA) Edmonton IFR 888-358-7526 or 780-890-8304/8305 867-394-4131 Ltd hrs (see COMM) METAR dur CARS hrs of ops (see COMM).	
RWY DATA RCR	Rwy 12(121°)/30(301°) 4000x100 gravel Thld 30 displ 655'. Opr RCR & win maint avbl Oct 16-Apr 15, 15-16Z± Mon-Fri, exc statutory hols, O/T RCR & win maint avbl 2 hrs PNR ctc 867-394-3220/4311. Sum maint Apr 16-Oct 15, 15-16Z± Mon, Wed, Fri, exc statutory hols. O/T 2 hr PNR ctc 867-394-3220/4311. Call out chg may be levied. PLR/PCN avbl ctc 867-872-2007.	
LIGHTING	12-AS(TE ME) P1, 30-AS(TE ME) P1 ARCAL-122.1 type J. PAPI not avbl outside CARS hrs ops.	
COMM MF APRT RDO	aprt rdo ltd hrs O/T tfc 122.1 5NM 3500 ASL (CAR 602.98) 122.1 (V) 15-23Z± Mon-Fri, clsd Sat, Sun, Stat hols.	

CANADA FLIGHT SUPPLEMENT / GPH 205

Effective 0901Z 20 November 2008 to 0901Z 15 January 2009

B296 AERODROME/FACILITY DIRECTORY

FORT RESOLUTION NT (Cont'd)

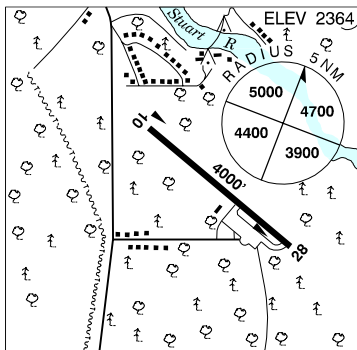
CYFR

NAV	NDB FR 274 (M) N61 09 15 W113 38 19 295° 1.9NM to thld 30
PRO	Pilots are to phone North Bay FIC for IFR clnc prior to dep.
CAUTION	First 200' rwy 30 soft May to Sep.

FORT ST. JAMES (PERISON) BC

CYJM

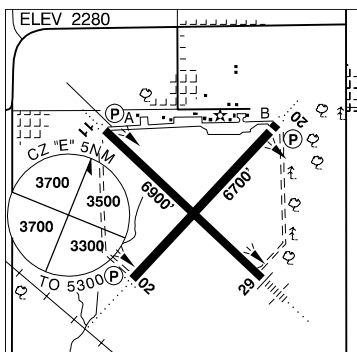
REF	N54 23 50 W124 15 46 2.4S 21°E UTC-8(7) Elev 2364' A5014 E-15
OPR	District 250-996-7161 Reg
PF	A-1,3 C-2,4,5
FLT PLN	NOTAM FILE CYXS Kamloops 866-WXBRIEF (Toll free within Canada) or 866-541-4101 (Toll free within Canada & USA)
SERVICES	S 4,5
RWY DATA	Rwy 10/28 4000x75 asphalt RCR Opr Ltd win maint
COMM	ATF tfc 123.2 5NM 5400 ASL
CAUTION	Trees to 90 AGL 220' fr N rwy edge.



FORT ST. JOHN BC

CYXJ

REF	N56 14 17 W120 44 25 3.8E 22°E UTC-7 Elev 2280' A5014 A5022 D-12 E-15 LO1 HI2 HI3 CAP
OPR	North Peace Aprt Svcs Ltd 250-787-0426 Cert
PF	A-1,2,3,6 C-1,2,3,4,5,6
FLT PLN	NOTAM FILE CYXJ Edmonton 866-WXBRIEF (Toll free within Canada) or 866-541-4102 (Toll free within Canada & USA)
ACC	Edmonton IFR 888-358-7526 or 780-890-8304/8305
WX	METAR H24. TAF H24, issue times: 01, 07, 13, 19Z.
PIK	NAV CANADA, Air Ops bldg, airside access.



SERVICES	
FUEL	100LL, JA-1, HPR (CON S IP JA-1, FSII)
OIL	All
S	1,2,3,4,5,6
SUP FL	D & A-ice
JASU	Elec Start 28v-800 Amp, 28v-1500 amp, CE 15
PVT ADV	ALCAN Esso 122.95 250-787-7170; Shell Avn 122.35 250-785-6174
MIL CON	1154321 Ltd (Shell) 250-785-6174

CANADA FLIGHT SUPPLEMENT / GPH 205

Effective 0901Z 20 November 2008 to 0901Z 15 January 2009

AERODROME/FACILITY DIRECTORY B297

FORT ST. JOHN BC (Cont'd)

CYXJ

RWY DATA	Rwy 11(113°)/29(293°) 6900x150 asphalt Rwy 29 up 0.53% first 1900' Rwy 02(023°)/20(203°) 6700x200 asphalt Thld 20 displ 191' Rwy 02 up 1.50% first 3000' Rwy 20 first 3700' down 0.65%
RCR	Opr Ltd win maint 12-23Z± dly, O/T 2hrs PNR, call out chg may be levied. CRFI, PLR/PCN.
LIGHTING	02-AD (non-std 1250') AS(TE ME) P2, 11-AO(TE HI) P2, 20-AO(TE ME) P2, 29-AN(TE HI)
COMM	
RADIO	118.5 295.8 (E) (emerg only 250-787-0434)
RCO	Edmonton rdo 123.55 (FISE) 126.7 (bcst)
ATIS	128.5
CLNC DEL	121.9 ltd hrs
MF	rdo 118.5 5NM 5300 ASL (CAR 602.98)
PAL	Edmonton Ctr 132.6 285.4
VDF	118.5
NAV	
NDB	XJ 326 (M) N56 17 04 W120 50 41 105° 3.9NM to A/D TAYLOR ZXJ 246 (L) N56 11 02 W120 38 42 292° 4.0NM to A/D
VOR/DME	YXJ 114.2 Ch 89 N56 17 03 W120 53 44 (2674') 094° 5.3NM to A/D
ILS	IXJ 109.5 (Rwy 29-11) RVR
CAUTION	Aerobatics may be in progress over aprt 6000 ASL & below.

FORT ST. JOHN (HOSP) BC (Heli)

CFJ7

REF	N56 14 48 W120 50 33 22°E UTC-7 Elev 2304' A5014 A5022	
OPR	North Peace Health Council 250-262-5296 Cert PNR	
PF	A-1,2,3,4 C-5,6	
FLT PLN	NOTAM FILE CYXJ	
FIC	Edmonton 866-WXBRIEF (Toll free within Canada) or 866-541-4102 (Toll free within Canada & USA)	
WX	METAR H24 (at A/D 3.7NM E). TAF H24, issue times: 00, 06, 12, 18Z.	
PAD DATA	44' x 44' concrete, max wt 7000 lbs, max length 43', 65' x 65' safety area	
RCR	Opr 250-262-5296/250-785-6611	
LIGHTING	RY(LO)	
COMM		
RADIO	118.5 295.8 (E) (emerg only 250-787-0434)	
RCO	Edmonton rdo 123.55 (FISE) 126.7 (bcst)	
ATIS	128.5	
MF	rdo 118.5 5NM (centered on Fort St John A/D 3.7NM E) 5300 ASL (CAR 602.98)	
PAL	Edmonton Ctr 132.6 285.4	
VDF	118.5	
NAV		
VOR	YXJ 114.2 Ch 89 N56 17 03 W120 53 44 (2674') 104° 2.2NM to Pad	
PRO	Curved arr/dep path E of heli 236°/056° (see A/D sketch).	

CANADA FLIGHT SUPPLEMENT / GPH 205

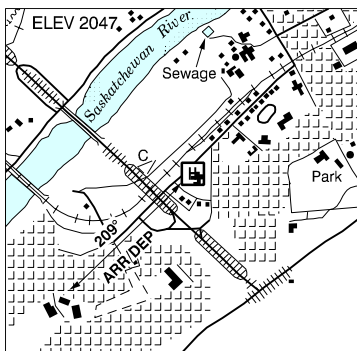
Effective 0901Z 20 November 2008 to 0901Z 15 January 2009

B298 AERODROME/FACILITY DIRECTORY

FORT SASKATCHEWAN (GEN HOSP) AB (Heli)

CSV4

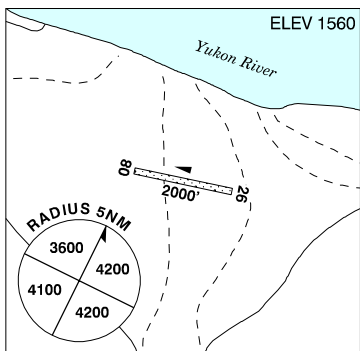
REF	N53 42 13 W113 13 24 17°E UTC-7(6) Elev 2047' VTA A5015
OPR	Fort Saskatchewan Health Ctr 780-998-2256 Cert PPR
PF	C-1,2,3,4,5,6
FLT PLN FIC	NOTAM FILE CYEG Edmonton 780-890-8386 or Edmonton 866-WXBRIEF (Toll free within Canada) or 866-541-4102 (Toll free within Canada & USA)
PAD DATA	65' dia turf 85' x 95' dia
LIGHTING	RF(FH) PNR
COMM ATF	tfc 123.2 5NM 5100 ASL
PRO	For VFR rtes see Edmonton VTPC or as directed by ATC. Arr/dep path brg 209° fr heli Slopes 16%. To be used by multi engine acft only.
CAUTION	Large tree adj heli to W.



FORT SELKIRK YT

CFS3

REF	N62 46 06 W137 23 05 Adj S 26°E UTC-8(7) Elev 1560' A5028
OPR	Govt of Yukon Territory 867-634-2450 Fax 867-634-2131 Reg
FLT PLN FIC	NOTAM FILE CYXY Whitehorse 866-WXBRIEF (Toll free within Canada) or 866-541-4107 (Toll free within Canada & USA)
RWY DATA RCR	Rwy 08(076°)/26(256°) 2000x75 gravel Opr or 867-996-2506 No win maint
COMM ATF	tfc 123.2 5NM 4600 ASL



CANADA FLIGHT SUPPLEMENT / GPH 205

Effective 0901Z 20 November 2008 to 0901Z 15 January 2009

AERODROME/FACILITY DIRECTORY B299

FORT SEVERN ON

CYER

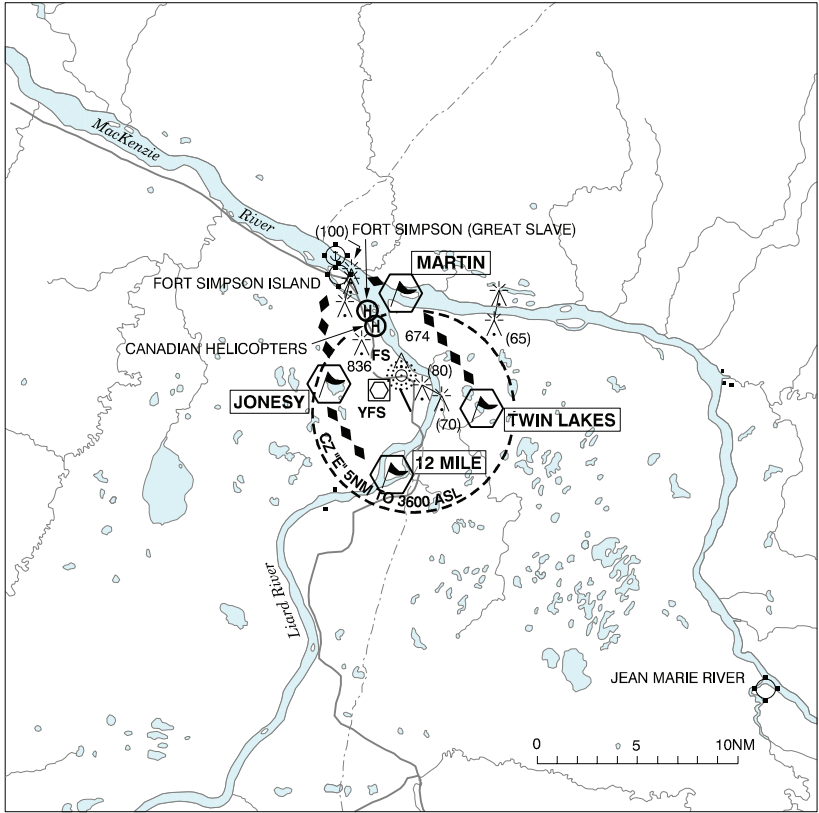
REF	N56 01 08 W87 40 34 3NW 8°W UTC-5(4) Elev 52' A5017 A5025 D-14 E-17 LO3 HI2 HI4 RCAP	
OPR	Govt of Ontario 807-473-2082 Cert	
PF	C-1,4	
FLT PLN	NOTAM FILE CYXL	
FIC	Winnipeg 866-WXBRIEF (Toll free within Canada) or 866-541-4103 (Toll free within Canada & USA)	
WX	Legacy LWIS (see COMM)	
RWY DATA	Rwy 15(151°)/33(331°) 3518x100 gravel	
RCR	Opr 13-22Z± Mon-Fri exc hols Aprt mgr 807-478-2535 Rwy cond subject to season & climatic vars.	
LIGHTING	15-(TE LO) AP, 33-(TE LO) APARCAL-122.8 type K for APAPI, rwy lgts low ints only.	
COMM		
ATF	tfc 122.8 5NM 3100 ASL	
Legacy LWIS	124.55	
NAV		
NDB	YER 334 (M) N55 59 33 W87 38 20 330° 2.1NM to A/D Unmonitored	

CANADA FLIGHT SUPPLEMENT / GPH 205

Effective 0901Z 20 November 2008 to 0901Z 15 January 2009

B300 AERODROME/FACILITY DIRECTORY

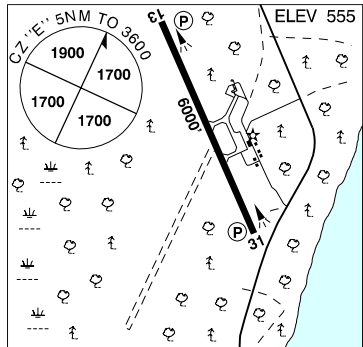
FORT SIMPSON VFR TERMINAL PROCEDURES CHART



FORT SIMPSON NT

CYFS

REF	N61 45 37 W121 14 11 7.4ESE 25°E UTC-7(6) Elev 555' A5029 D-12 LO5 HI2 CAP
OPR	Govt of Northwest Territories 867-695-2471 Cert
PF	A-1 avbl 1530-2330Z† Mon-Fri C-2,3,4,5,6
FLT PLN	NOTAM FILE CYFS & CZNB
FIG	North Bay 866-WXBRIEF (Toll free within Canada) or 866-541-4109 (Toll free within Canada & USA)
ACC	Edmonton IFR 888-358-7526 or 780-890-8304/8305
CARS	867-695-2491
WX	METAR H24. TAF H24, issue times: 00, 06, 12, 18Z.



CANADA FLIGHT SUPPLEMENT / GPH 205

Effective 0901Z 20 November 2008 to 0901Z 15 January 2009

AERODROME/FACILITY DIRECTORY B301

FORT SIMPSON NT (Cont'd)

CFYS

SERVICES	
FUEL	100 LL, JA-1, SP, HPR, 15-24Z† Mon-Fri (call 20 min prior arr) O/T 1 hr PNR. Call out chg will be levied. Nogha Construction Ltd. 867-695-3927.
S	4,6
RWY DATA	Rwy 13(131°)/31(311°) 6000x146 asphalt Rwy 13 up 0.33% first 3000'
RCR	Opr CRFI avbl 15-2330Z† Mon-Fri O/T 2 hrs PNR, Call out chg may be levied. ctc CARS or Regional APM 867-695-2491.
LIGHTING	13-(TE ME) P2, 31-(TE ME) P2 ARCAL-122.2 type K
COMM	
RCO	Arctic rdo 126.7 (FISE) 296.6 (FISE) (U)
MF	aprt rdo 122.2 (V) 15NM 3600 ASL (CAR 602.98)
PAL	Edmonton Ctr 135.4
APRT RDO	122.2 (V)
NAV	
NDB	FS 375 (M) N61 47 09 W121 15 38 131° 1.2NM to A/D
VOR/DME	YFS 117.9 Ch 126 N61 46 26 W121 17 55 (574') 090° 1.9NM to A/D

FORT SIMPSON / CANADIAN HELICOPTERS NT (Heli)

CFD8

REF	N61 50 12 W121 19 30 2.5SE 25°E UTC-7(6) Elev 480' A5029 D-12	
OPR	Canadian Helicopters Western 867-695-2424/2434 Reg	
FLT PLN	NOTAM FILE CYFS & CZNB	
FIC	North Bay 866-WXBRIEF (Toll free within Canada) or 866-541-4109 (Toll free within Canada & USA)	
ACC	Edmonton IFR 888-358-7526 or 780-890-8304/8305	
CARS	867-695-2491	
PAD DATA	8' dia circle marked at end of 8'x30' asphalt	
COMM		
RCO	Arctic rdo 126.7 (FISE) 296.6 (FISE) (U)	
MF	Fort Simpson aprt rdo 122.2 (V) 15NM centered on Fort Simpson A/D 5NM ESE 3600 ASL (CAR 602.98)	
PRO	All apch fr river side of pad.	
CAUTION	Hydro line along N bdry of property 130' N of hangar.	

CANADA FLIGHT SUPPLEMENT / GPH 205

Effective 0901Z 20 November 2008 to 0901Z 15 January 2009

B302 AERODROME/FACILITY DIRECTORY

FORT SIMPSON (GREAT SLAVE) NT (Heli)

CFS2

REF	N61 50 18 W121 19 35 2.4SE 25°E UTC-7(6) Elev 500' A5029 D-12	
OPR	Great Slave Helicopters 867-695-2326/867-873-2081 Reg PPR	
FLT PLN	NOTAM FILE CYFS & CZNB	
FIC	North Bay 866-WXBRIEF (Toll free within Canada) or 866-541-4109 (Toll free within Canada & USA)	
ACC	Edmonton IFR 888-358-7526 or 780-890-8304/8305	
CARS	867-695-2491	
PAD DATA	PAD 1: 16' x 40' concrete PAD 2: 16' x 40' concrete	
COMM		
RCO	Arctic rdo 126.7 (FISE) 296.6 (FISE) (U)	
MF	Fort Simpson aprt rdo 122.2 (V) 15NM centered on Fort Simpson A/D 5 NM ESE 3600 ASL (CAR 602.98)	
PRO	Arr/dep 000°-090° deg, apch fr river side of pad only to avoid bldgs and pwr lines.	
CAUTION	200' AGL comm twr 150' SW of hgr.	

FORT SIMPSON ISLAND NT

CET4

REF	N61 52 00 W121 21 58 Adj 25°E UTC-7(6) Elev 405' A5029 D-12	
OPR	Airports North Ltd 867-695-2263/2505 Reg Ldg fees PPR	
PF	C-1,2,3,4,5,6	
FLT PLN	NOTAM FILE CYFS & CZNB	
FIC	North Bay 866-WXBRIEF (Toll free within Canada) or 866-541-4109 (Toll free within Canada & USA)	
ACC	Edmonton IFR 888-358-7526 or 780-890-8304/8305	
CARS	867-695-2491	
RWY DATA	Rwy 13(128°)/31(308°) 3000x100 gravel/snow Thlds rwy 13 & 31 displ 1000'.	
TWY	Twy A & B day use only.	
RCR	Opr Ltd win maint	
COMM		
RCO	Arctic rdo 126.7 (FISE) 296.6 (FISE) (U)	
MF	Fort Simpson aprt rdo 122.2 (V) 15NM centered on Fort Simpson A/D 7.4NM ESE 3600 ASL (CAR 602.98)	
PRO	Rgt hand circuits rwy 13 (CAR 602.96).	
CAUTION	First 300' rwy 13 soft Apr til Jun. Extv migratory bird activity May-Oct.	

CANADA FLIGHT SUPPLEMENT / GPH 205

Effective 0901Z 20 November 2008 to 0901Z 15 January 2009

AERODROME/FACILITY DIRECTORY B303

FORT SMITH NT

CYSM

REF	N60 01 13 W111 57 43 19°E UTC-7(6) Elev 671' A5023 A5030 D-13 LO5 HI2 CAP	
OPR	Govt of Northwest Territories 867-872-2007/0207 Cert	
PF	A-1 C-2,3,4,5,6	
FLT PLN	NOTAM FILE CYSM & CZNB	
FIG	North Bay 866-WXBRIEF (Toll free within Canada) or 866-541-4109 (Toll free within Canada & USA)	
ACC	Edmonton IFR 888-358-7526 or 780-890-8304/8305	
CARS	867-872-2376	
WX	METAR H24. TAF H24, issue times: 00, 06, 12, 18Z.	
SERVICES	Call out chg may be levied after hrs.	
FUEL	100LL, JA-1 15-24Z± Mon-Fri Northwestern Air Lease 867-872-2216 or 877-872-2216. Self-serve cardlock accepts major cards.	
OIL	BP 2380, 15W50	
S	2,4,6	
RWY DATA	Rwy 11(114°)/29(294°) 6000x200 asphalt Rwy 02(019°)/20(199°) 1800x100 gravel/asphalt, 600' asphalt	
RCR	OPR RCR/CRFI Win maint avbl Oct 16-Apr 15, 1330-01Z± Mon-Fri, 16-01Z± Sun, including statutory hols, O/T RCR/CRFI and win maint avbl 2 hr PNR ctc 867-872-2376. Sum maint avbl Apr 16-Oct 15, 15-24Z (14-23 DT) Mon-Fri, exc statutory hols. O/T 2 hr PNR ctc 867-872-2376. Call out chg may be levied. Rwy 02/20 closed Oct 20-Apr 15. PLR/PCN avbl ctc 867-872-2007.	
LIGHTING	11-AD(TE ME) V2, 29-AD AS(TE ME) V2	
COMM		
RCO	Arctic rdo 123.55 (FISE) 239.8 (FISE) (U)	
MF	aprt rdo 122.2 5NM 3700 ASL (CAR 602.98)	
APRT RDO	122.2 (V)	
NAV		
NDB	SM 254 (M) N59 58 17 W111 51 25 293° 3.8NM to A/D	
VOR/DME	YSM 112.4 Ch 71 N60 01 13 W111 58 10 (708') at A/D	
PRO	PPR fr APM before "hot refuelling" procedures may be used.	
CAUTION	Radiosonde balloon launches fr N60 02 W111 56 (1.3NM NE thld rwy 11) at 1115Z-1129Z & 2315Z-2329Z dly.	

CANADA FLIGHT SUPPLEMENT / GPH 205

Effective 0901Z 20 November 2008 to 0901Z 15 January 2009

B304 AERODROME/FACILITY DIRECTORY

FORT SMITH (DISTRICT) NT (Heli)

CEC5

REF	N60 00 11 W111 54 34 Adj W 19°E UTC-7(6) Elev 665' A5023 A5030	
OPR	Dept of Environment & Natural Resources, Govt of Northwest Territories 867-872-7700 Cert PPR	
FLT PLN	NOTAM FILE CYSM & CZNB North Bay 866-WXBRIEF (Toll free within Canada) or 866-541-4109 (Toll free within Canada & USA)	
ACC CARS WX	Edmonton IFR 888-358-7526 or 780-890-8304/8305 867-872-2376 METAR H24. TAF H24, issue times: 05, 11, 17, 23Z.	
PAD DATA	Three pads 30' dia 255' x 150'	
COMM	RCO Arctic rdo 123.55 (FISE) 239.8 (FISE) (U) MF apt rdo 122.2 5NM centred on Fort Smith A/D 1.9NM WSW 3700 ASL (CAR 602.98) APRT RDO 122.2 (V)	

FORT VERMILION AB

CEZ4

REF	N58 24 15 W115 57 03 2.3ENE 21°E UTC-7(6) Elev 836' A5023 D-13 LO1 CAP	
OPR	MacKenzie County 780-927-3718 Reg	
PF	A-1 C-2,3,4,5,6	
FLT PLN	NOTAM FILE CYOJ Edmonton 866-WXBRIEF (Toll free within Canada) or 866-541-4102 (Toll free within Canada & USA)	
ACC	Edmonton IFR 888-358-7526 or 780-890-8304/8305	
RWY DATA	Rwy 08(077°)/26(257°) 2995x100 asphalt RCR Opr Ltd maint. Snow plowed or compacted.	
LIGHTING	08-(TE LO), 26-(TE LO) ARCAL-123.2 type K	
COMM	ATF tfc 123.2 5NM 3800 ASL	
NAV	NDB 5U 261 (L) N58 24 09 W115 57 04 at A/D Pvt DME 5U 108.8 Ch 25 N58 24 12 W115 56 45 at A/D Pvt	

CANADA FLIGHT SUPPLEMENT / GPH 205

Effective 0901Z 20 November 2008 to 0901Z 15 January 2009

AERODROME/FACILITY DIRECTORY B305

FORT VERMILION / COUNTRY GARDENS B&B AB (Heli)

CKV9

REF	N58 21 02 W115 56 57 2.5ESE 21°E UTC-7(6) Elev 915' aprx A5023	
OPR	Daryl & Marg Zielsdorf 780-927-3773 Reg	
PF	B-1,2,3,5,6 C-4	
FLT PLN	NOTAM FILE CYQJ FIC Edmonton 866-WXBRIEF (Toll free within Canada) or 866-541-4102 (Toll free within Canada & USA) ACC Edmonton IFR 888-358-7526 or 780-890-8304/8305	
PAD DATA	4 pads 16' x 16' wood 100' dia grass. Water and power at each pad. Open field S & W.	
COMM	ATF tfc 123.2 5NM 4000 ASL	

FORT WARE BC

CAJ9

REF	N57 25 38 W125 39 01 Adj SW 23°E UTC-8(7) Elev 2450' aprx A5022 D-12	
OPR	Fort Ware Indian Band Council 250-563-4161 Reg	
FLT PLN	NOTAM FILE CYQH FIC Whitehorse 866-WXBRIEF (Toll free within Canada) or 866-541-4107 (Toll free within Canada & USA) ACC Edmonton IFR 888-358-7526 or 780-890-8304/8305	
RWY DATA	Rwy 09/27 4700x30 gravel RCR Opr Ltd win maint or 250-471-2302	
COMM	RCO Whitehorse rdo 126.7 (FISE) ATF tfc 123.2 5NM 5500 ASL	
CAUTION	Rwy may be u/s dur spring.	

CANADA FLIGHT SUPPLEMENT / GPH 205

Effective 0901Z 20 November 2008 to 0901Z 15 January 2009

B306 AERODROME/FACILITY DIRECTORY

FOX CREEK AB

CED4

REF	N54 22 48 W116 45 59 2SE 19°E UTC-7(6) Elev 2842' A5014 E-15	
OPR	Town of Fox Creek 780-622-3896 Reg	
PF	B-1 C-2,3,4,5	
FLT PLN	NOTAM FILE CYEG	
FIC	Edmonton 866-WXBRIEF (Toll free within Canada) or 866-541-4102 (Toll free within Canada & USA)	
ACC	Edmonton IFR 888-358-7526 or 780-890-8304/8305	
SERVICES		
FUEL	JB with FSII 888-778-8765	
RWY DATA	Rwy 10(105°)/28(285°) 2950x75 asphalt	
RCR	Opr Ltd win maint	
LIGHTING	10-(TE ME), 28-(TE ME) ARCAL-123.2 type K	
COMM		
ATF	tfc 123.2 5NM 5800 ASL	
NAV		
NDB	5F 353 (L) N54 22 46 W116 45 36 at A/D Pvt Unmonitored	
DME	5F 110.0 Ch 37 N54 22 45 W116 45 34 at A/D Pvt Unmonitored	

FOX HARBOUR NS

CFH4

REF	N45 52 12 W63 27 40 1.5N 20°W UTC-4(3) Elev 62' A5003 F-22 LO8 HI6 RCAP	
OPR	Fox Harbour Development 902-257-1801/694-4311 Reg PPR	
PF	B-1,2,5 D-4	
FLT PLN	NOTAM FILE CYHZ	
FIC	Halifax 866-WXBRIEF or (French) 866-GOMÉTEO (Toll free within Canada) or 866-541-4106 (Toll free within Canada & USA)	
ACC	Moncton 506-867-7176 or 866-480-8200 Fit Plns by Fax 506-867-7180 & include phone numbers where pilot can be reached prior to dep	
SERVICES		
FUEL	Call out chg may be levied for fuel JA-1 Ltd hrs ctc opr	
RWY DATA	Rwy 15(145°)/33(325°) 4885x75 asphalt Thld 33 displ 80'	
RCR	Opr Ltd win maint	
LIGHTING	15-(TE ME), 33-(TE ME) P2 ARCAL-122.2 type K	
COMM		
ATF	UNICOM ltd hrs O/T tfc 122.2 5NM 3100 ASL	
CAUTION	Trees: Trees on apch to rwy 15, 250' fr thld, 52' above thld elev. Hangar: Hangar 37' high, 175' fr rwy. High Performance Acft: Not recommended for use at ngt by high performance acft. Optical Illusion: Due to relative width of rwy, acft may appear to be higher than actual on apch. Wildlife: Be alert for wildlife on rwy. Turbulence: Due adj trees, westerly winds may produce turbulence over rwy.	

CANADA FLIGHT SUPPLEMENT / GPH 205

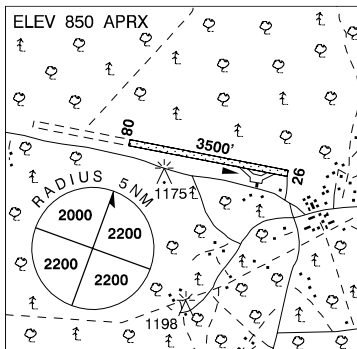
Effective 0901Z 20 November 2008 to 0901Z 15 January 2009

AERODROME/FACILITY DIRECTORY B307

FOX LAKE AB

CEC3

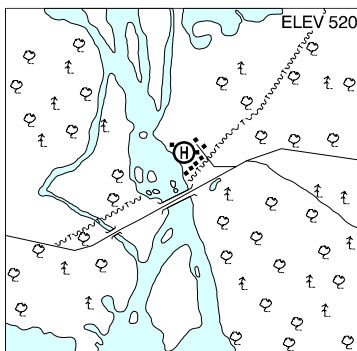
REF	N58 28 24 W114 32 34 1NW 20°E UTC-7(6) Elev 850' aprx A5023 D-13
OPR	Little Red Air Svc Ltd Ft. Vermilion 780-927-4630 Reg PPR Ldg fees
PF	C-1,4
FLT PLN	NOTAM FILE CYOJ
FIC	Edmonton 866-WXBRIEF (Toll free within Canada) or 866-541-4102 (Toll free within Canada & USA)
ACC	Edmonton IFR 888-358-7526 or 780-890-8304/8305
RWY DATA	Rwy 08(086°)/26(266°) 3500x100 sand/gravel
RCR	Opr
COMM	
ATF	tfc 123.2 5NM 3900 ASL
CAUTION	Horses may stray onto rwy.



FRANK CHANNEL (FORESTRY) NT (Heli)

CFB2

REF	N62 47 10 W115 56 45 23°E UTC-7(6) Elev 520' A5030
OPR	Dept of Environment & Natural Resources, Govt of Northwest Territories 867-872-7700 Reg PPR
FLT PLN	NOTAM FILE CYZF
FIC	North Bay 866-WXBRIEF (Toll free within Canada) or 866-541-4109 (Toll free within Canada & USA)
PAD DATA	3 pads 30' dia
COMM	
ATF	tfc 123.2 5NM 3500 ASL



CANADA FLIGHT SUPPLEMENT / GPH 205

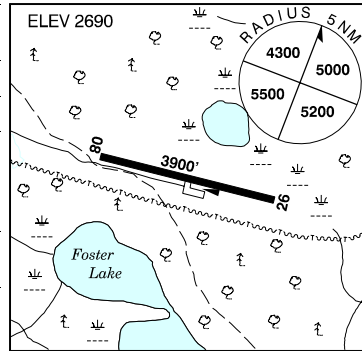
Effective 0901Z 20 November 2008 to 0901Z 15 January 2009

B308 AERODROME/FACILITY DIRECTORY

FRASER LAKE BC

CBZ9

REF	N54 00 48 W124 46 06 4SE 21°E UTC-8(7) Elev 2690' A5014 E-15
OPR	Village 250-699-6257 Reg
PF	C-1,2,3,5
FLT PLN	NOTAM FILE CYXS
FIC	Kamloops 866-WXBRIEF (Toll free within Canada) or 866-541-4101 (Toll free within Canada & USA)
SERVICES	
S	5
RWY DATA	Rwy 08(083°)/26(263°) 3900x75 asphalt
RCR	Joe Pacheco 250-699-6257 0800-1600 lcl Mon-Fri No win maint
COMM	
ATF	tfc 122.8 5NM 5700 ASL



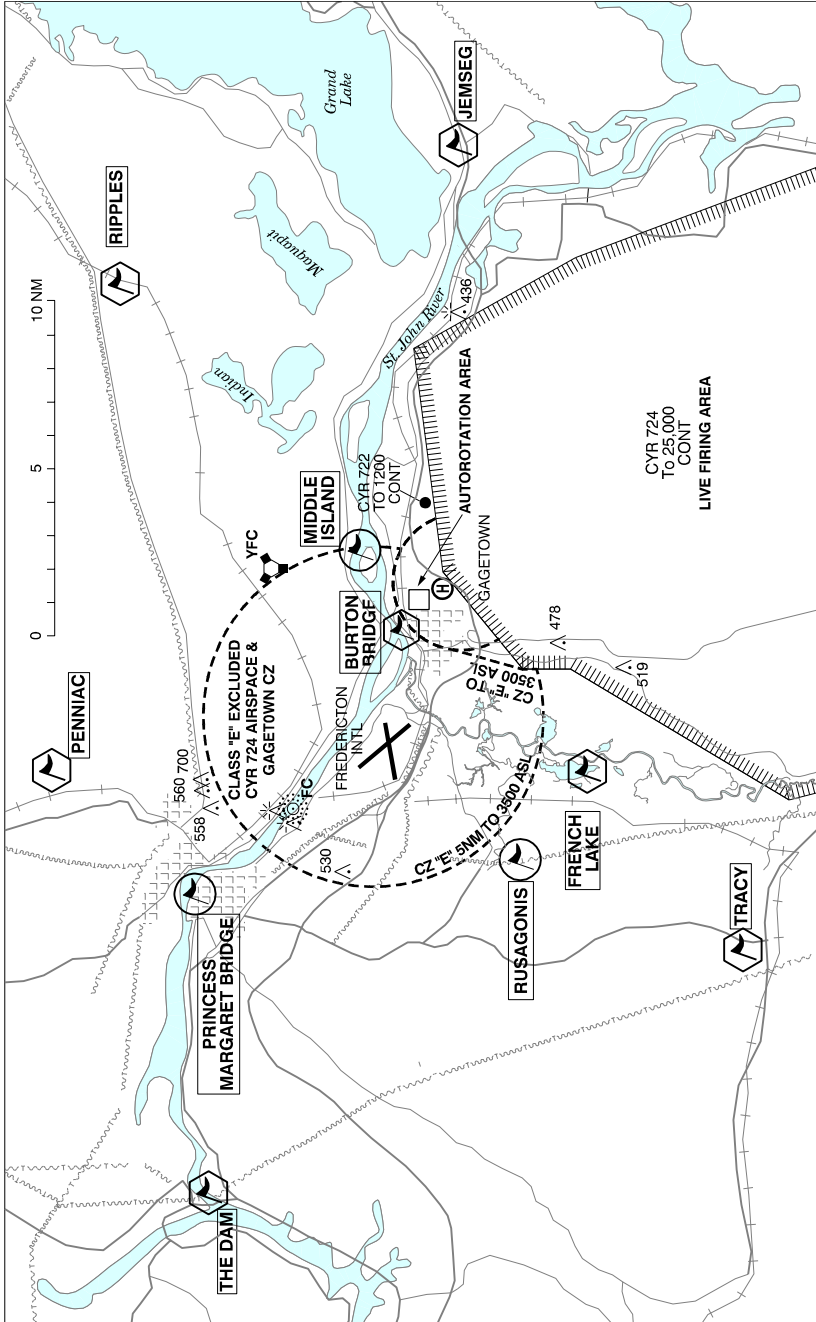
FREDDIE CARMICHAEL NT — See AKLAVIK / FREDDIE CARMICHAEL

CANADA FLIGHT SUPPLEMENT / GPH 205

Effective 0901Z 20 November 2008 to 0901Z 15 January 2009

AERODROME/FACILITY DIRECTORY B309

FREDERICTON VFR TERMINAL PROCEDURES CHART



CANADA FLIGHT SUPPLEMENT / GPH 205

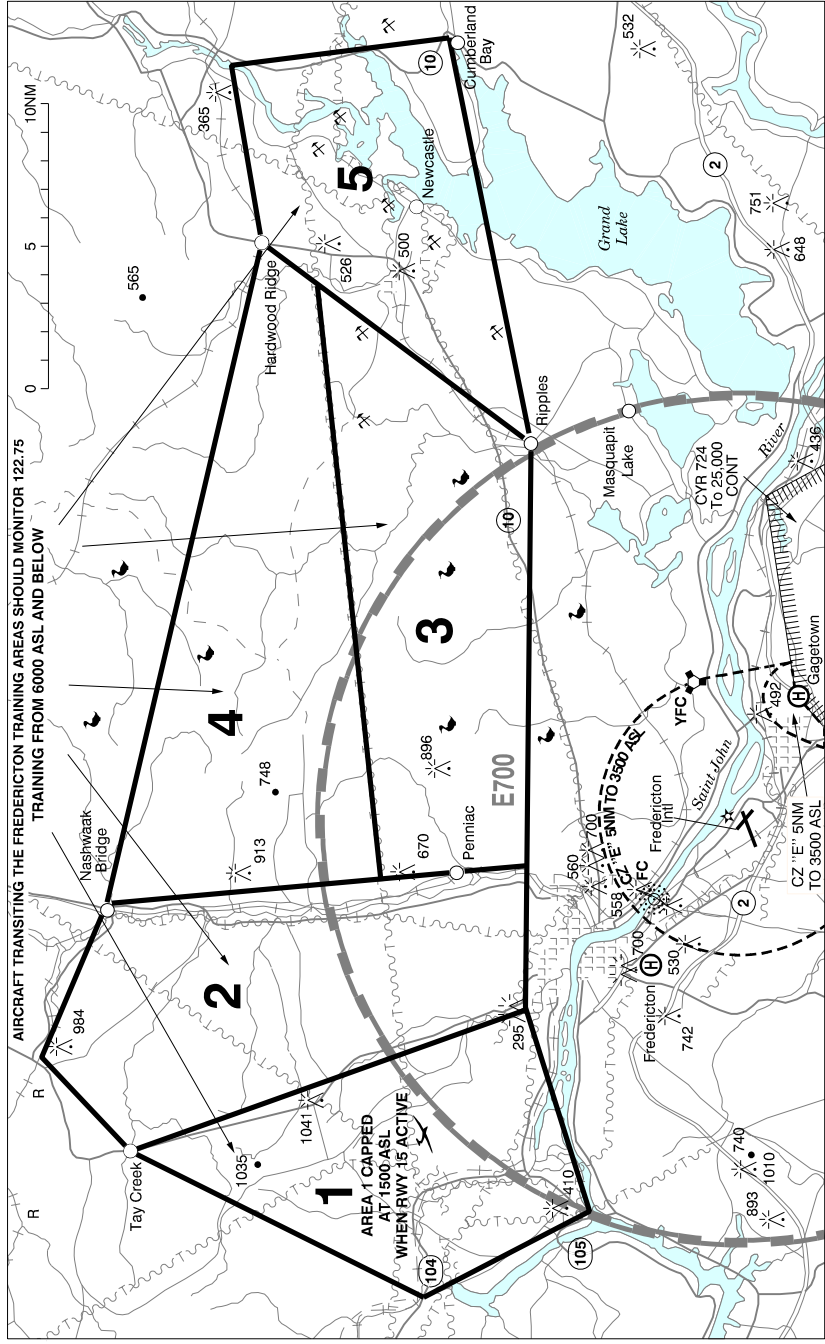
Effective 0901Z 20 November 2008 to 0901Z 15 January 2009

B310 AERODROME/FACILITY DIRECTORY

FREDERICTON VFR TERMINAL PROCEDURES CHART (Cont'd)

LOCATION	IDENT	LAT/LONG
BURTON BRIDGE	VCBTB	N45° 51.67 W66° 27.47
FRENCH LAKE	VCFRL	N45° 46.00 W66° 33.78
JEMSEG	VCJMS	N45° 49.73 W66° 07.00
MIDDLE ISLAND	VCMDI	N45° 52.75 W66° 24.97
PENNIAC	VCPNC	N46° 02.00 W66° 35.07
PRINCESS MARGARET BRIDGE	VCPMB	N45° 57.50 W66° 38.97
RIPPLES	VCRPL	N46° 00.00 W66° 13.00
RUSAGONIS	VCRUS	N45° 48.00 W66° 37.47
THE DAM	VCDAM	N45° 57.38 W66° 52.22
TRACY	VCTRC	N45° 41.05 W66° 41.08

FREDERICTON VFR TERMINAL PROCEDURES CHART - TRAINING AREAS



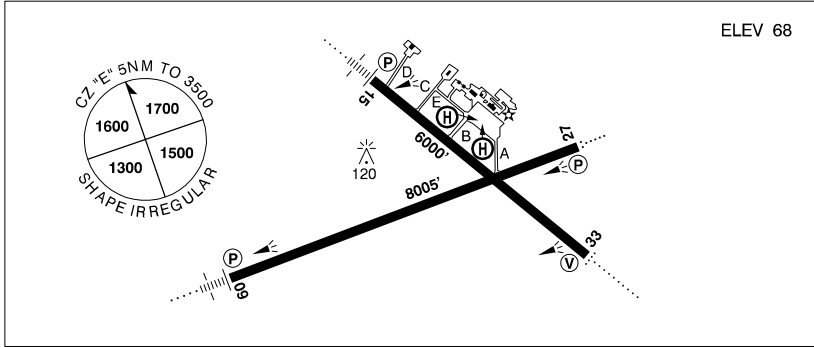
CANADA FLIGHT SUPPLEMENT / GPH 205

Effective 0901Z 20 November 2008 to 0901Z 15 January 2009

B312 AERODROME/FACILITY DIRECTORY

FREDERICTON INTL NB

CYFC



REF	N45 52 08 W66 32 14 7SE 19°W UTC-4(3) Elev 68' A5003 F-22 LO8 HI6 CAP
OPR	Greater Fredericton Airport Authority 506-460-0920 Cert
PF	A-1,2,6(1030-0230Z†) C-3,4,5
CUST	AOE/55 13-21Z† Mon-Fri exc hols. AOE/15 888-226-7277 13-04Z† Mon-Fri, 12-04Z† Sat, Sun & hols
FLT PLN	NOTAM FILE CYFC
FIC	Halifax 866-WXBRIEF or (French) 866-GOMÉTÉO (Toll free within Canada) or 866-541-4106 (Toll free within Canada & USA)
ACC	Moncton 506-867-7176 or 866-480-8200 Flt Plns by Fax 506-867-7180 & include phone numbers where pilot can be reached prior to dep
WX	METAR H24. TAF H24, issue times: 00, 06, 12, 18Z.
PIK	NAV CANADA, Main Floor room 170 airside access.
SERVICES	Call out chg may be levied for one or more svcs
FUEL	100LL, JA-1, F-34, HPR, IP FSII (PLH Avn Svcs 100LL not avbl) (CON IRVING IP JA-1, FSII HPR)
OIL	80, 100, 15W50
S	1,2,3,4,5,6 Capital Awy, 5,6 Marsh Brothers Avn
ARFF	5 1015-0345Z† O/T aprt clsd to acct 20 seats & abv, exc for diversions or as an altn A/D without PPR. Cat 6 avbl with 4 hrs PNR and chg.
JASU	Elect Start 10/15.
PVT ADV	Capital Airways 122.87 506-446-3588 Fax 506-446-3589 11-23Z† O/T call out chg. Marsh Brothers Avn (Imperial Oil) 122.87 506-446-5192 Fax 506-446-9400 0955-0325Z† O/T call out chg. PLH Avn Svcs (Irving Oil) 506-470-2320, office 506-446-5103, page 506-557-7270.
MIL CON	PLH Avn Svcs (Irving Oil) 506-446-5103
RWY DATA	Rwy 15(149°)/33(329°) 6000x200 asphalt Rwy 09(089°)/27(269°) 8005x200 asphalt
PAD DATA	Rstd to max heli length of 49'
TWY	Twy C, D & E no vehicle cti svc. Twy C & D day ops only.
RCR	Opr CRFI, win maint 0930-0300Z† PNR for extended svc. PLR/PCN
LIGHTING	09-AN(TE HI) P2, 15-AN(TE HI) P2, 27-AO(TE HI) P2, 33-AD(TE HI) V2

CANADA FLIGHT SUPPLEMENT / GPH 205

Effective 0901Z 20 November 2008 to 0901Z 15 January 2009

AERODROME/FACILITY DIRECTORY B313

FREDERICTON INTL NB (Cont'd)

CYFC

COMM	<p>RADIO 119.0 236.6 (E) (emerg only 506-446-3420)</p> <p>RCO Halifax rdo 126.7 (FISE)</p> <p>ATIS 127.55</p> <p>CLNC DEL 121.7 ltd hrs</p> <p>MF rdo 119.0 5NM 3500 ASL (CAR 602.98)</p> <p>PAL Moncton Ctr 124.3 135.5 270.8</p> <p>VDF 119.0</p>
NAV	<p>NDB FC 326 (M) N45 55 02 W66 35 59 155° 3.6NM to thld 15</p> <p>VORTAC YFC 113.0 Ch 77 N45 53 43 W66 25 08 (52') 273° 4.6NM to thld 27</p> <p>DME IDC 111.3 Ch 50 N45 51 47 W66 32 52 (62') at A/D</p> <p>ILS IDC 111.3 (Rwy 09) RVR</p>
PRO	Dep rwy 15 turn as soon as practicable after tkof to remain clear of CYR724.
CAUTION	RESTRICTED AREAS: Extv live firing in CYR724, 725 4NM SE of apt. AIRSPACE: Gagetown Class "E" CZ 3.5NM SE to 3500 ASL.

FREDERICTON (RCMP) NB (Heli)

CRC2

REF	N45 55 54 W66 40 00 Adj 19°W UTC-4(3) Elev 369' A5003 F-22	
OPR	RCMP 506-451-6050 Reg PPR	
FLT PLN	NOTAM FILE CYFC	
FIC	Halifax 866-WXBRIEF or (French) 866-GOMÉTÉO (Toll free within Canada) or 866-541-4106 (Toll free within Canada & USA)	
ACC	Moncton 506-867-7176 or 866-480-8200 Flt Plns by Fax 506-867-7180 & include phone numbers where pilot can be reached prior to dep	
PAD DATA	77' x 77' asphalt	
LIGHTING	FL(LO) Arr/dep 330°/150° DR(LO)	
COMM	<p>RCO Halifax rdo 126.7 (FISE)</p> <p>MF rdo 119.0 5NM centred on Fredericton Intl A/D 6.8NM E 3500 ASL (CAR 602.98)</p> <p>ATF tfc 123.2 5NM 3400 ASL</p>	
PRO	Arr/dep 133°/313° & 330°/150° fr heli.	

CANADA FLIGHT SUPPLEMENT / GPH 205

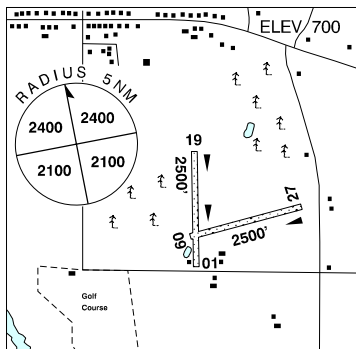
Effective 0901Z 20 November 2008 to 0901Z 15 January 2009

B314 AERODROME/FACILITY DIRECTORY

FRENCH RIVER / ALBAN ON

CFR5

REF	N46 05 23 W80 36 16 1N 11°W UTC-5(4) Elev 700 A5001
OPR	French River Flying Club 705-898-1204 Reg PNR
PF	B-1,C-2,5 D-4
FLT PLN	NOTAM FILE CYYB FIC London 866-WXBRIEF (Toll free within Canada) or 866-541-4104 (Toll free within Canada & USA)
SERVICES	OIL 15W50 S 1,4,5,6
RWY DATA	Rwy 01(010°)/19(190°) 2500X80 turf Rwy 09(086°)/27(266°) 2500X50 turf RCR Opr No win maint. Rwy may be soft in spring.
COMM	ATF UNICOM 123.0 5NM 3700 ASL



FRIENDSHIP FIELD MB — See CARMAN / FRIENDSHIP FIELD

FRONTIER SK

CJM5

REF	N49 10 W108 34 2S 13°E UTC-6 Elev 2960' A5006 E-16 LO2
OPR	R.M. of Frontier #19 306-296-2030 Fax 306-296-2175 Reg
PF	C-1,2,5
FLT PLN	NOTAM FILE CYYN FIC Edmonton 866-WXBRIEF (Toll free within Canada) or 866-541-4102 (Toll free within Canada & USA)
RWY DATA	Rwy 07(076°)/25(256°) 3625x60 asphalt RCR Opr Ltd win maint
LIGHTING	07-(TE LO), 25-(TE LO) ARCAL-123.2 type J. Only 3000' lgt.
COMM	ATF tfc 123.2 5NM 6000 ASL

