

# CANADA FLIGHT SUPPLEMENT / GPH 205

Effective 0901Z 20 November 2008 to 0901Z 15 January 2009

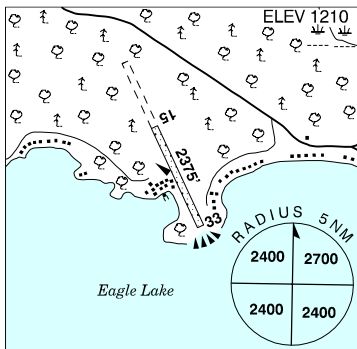
AERODROME/FACILITY DIRECTORY B223

## EAGLE PLAINS / WILEY YT — See WILEY

### EAGLE RIVER ON

CKX3

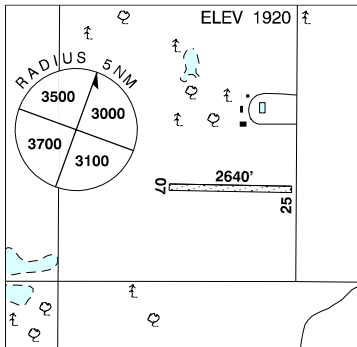
<b>REF</b>	N49 45 W93 08 3.9SE 1°E UTC-6(5) Elev 1210' A5007 E-17
<b>OPR</b>	North Shore Lodge 807-755-2441 Reg May 1-Oct 1
<b>PF</b>	B-1,2,5 D-3,4,6
<b>FLT PLN</b> <b>FIC</b>	NOTAM FILE CYHD Winnipeg 866-WXBRIEF (Toll free within Canada) or 866-541-4103 (Toll free within Canada & USA)
<b>SERVICES</b> <b>S</b>	4,5
<b>RWY DATA</b> <b>RCR</b>	Rwy 15(155°)/33 (335°) 2375x75 turf Opr No win maint
<b>COMM</b> <b>ATF</b>	tfc 123.2 5NM 4300 ASL
<b>CAUTION</b>	Drop off at thld 33.



### EAGLESHAM (SOUTH) AB

CGL4

<b>REF</b>	N55 40 16 W117 56 08 8SSW 20°E UTC-7(6) Elev 1920' A5014 E-15
<b>OPR</b>	Edmond Pawluski 780-359-2472 Reg PPR
<b>FLT PLN</b> <b>FIC</b> <b>ACC</b>	NOTAM FILE CYPE Edmonton 866-WXBRIEF (Toll free within Canada) or 866-541-4102 (Toll free within Canada & USA) Edmonton IFR 888-358-7526 or 780-890-8304/8305
<b>RWY DATA</b> <b>RCR</b>	Rwy 07/25 2640x85 turf Opr Ltd win maint
<b>LIGHTING</b>	RR
<b>COMM</b> <b>ATF</b>	tfc 123.20 5NM 5000 MSL
<b>CAUTION</b>	Slightly rising terrain W of rwy.



# CANADA FLIGHT SUPPLEMENT / GPH 205

Effective 0901Z 20 November 2008 to 0901Z 15 January 2009

## B224 AERODROME/FACILITY DIRECTORY

### EARLTON (TIMISKAMING REGIONAL) ON

CYXR

<b>REF</b>	N47 41 42 W79 50 56 1SW 12°W UTC-5(4) Elev 798' A5001 F-21 LO4 LO7 HI4 HI5 CAP	
<b>OPR</b>	Township of Armstrong 705-563-2215 Certs	
<b>PF</b>	B-1 C-2,4, D-3,5,6	
<b>FLT PLN</b>	NOTAM FILE CYXR <b>FIC</b> London 866-WXBRIEF (Toll free within Canada) or 866-541-4104 (Toll free within Canada & USA) <b>WX</b> Legacy AWOS (see COMM) TAF 13-01Z±, issue times: 13, 18Z (DT 12, 18Z).	
<b>SERVICES</b>	Call out chg may be levied for one or more svcs <b>FUEL</b> 100LL, JA-1 12-2130Z± 705-563-2215, O/T call out chg may apply Page 705-648-2182 <b>OIL</b> 100, 15W50	
<b>RWY DATA</b>	Rwy 08(075°)/26(255°) 6000x150 asphalt Rwy 16(161°)/34(341°) 3018x150 gravel/snow Thld 34 displ 300'. <b>RCR</b> London FIC CRFI/RSC avbl ltd hrs. PLR/PCN	
<b>LIGHTING</b>	08-AD(TE ME) V2, 16-(TE ME), 26-AD AS(TE ME) V2, 34-(TE ME) ARCAL-122.0 type K. RILS activated by ARCAL on high ints setting only.	
<b>COMM</b>	<b>RCO</b> London rdo 126.7 (FISE) <b>MF</b> tfc 122.0 5NM 3800 ASL (CAR 602.98) <b>Legacy</b> <b>AWOS</b> 128.6	
<b>NAV</b>	<b>NDB</b> YXR 257 (M) N47 42 43 W79 47 28 260° 2.0NM to A/D	
<b>PRO</b>	Rgt hand circuits rwy 08 (CAR 602.96).	

### EASTEND SK

CKK5

<b>REF</b>	N49 33 W108 48 1.7NNE 14°E UTC-6 Elev 3040' aprx A5006 E-16	
<b>OPR</b>	Town 306-295-3322/3807 Fax 306-295-3571 Reg	
<b>PF</b>	C-1,2,4,5	
<b>FLT PLN</b>	NOTAM FILE CYYN <b>FIC</b> Edmonton 866-WXBRIEF (Toll free within Canada) or 866-541-4102 (Toll free within Canada & USA)	
<b>SERVICES</b>	<b>S</b> 4,5	
<b>RWY DATA</b>	Rwy 02(021°)/20(201°) 2500x150 turf Rwy 14(138°)/32(318°) 2300x200 turf Opr No win maint	
<b>RCR</b>		
<b>COMM</b>	<b>ATF</b> tfc 123.2 5NM 6100 ASL	

# CANADA FLIGHT SUPPLEMENT / GPH 205

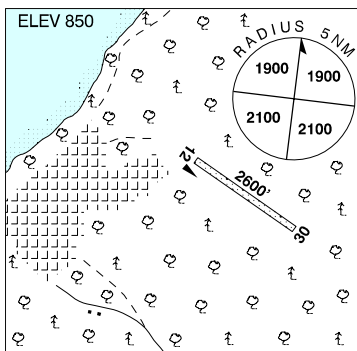
Effective 0901Z 20 November 2008 to 0901Z 15 January 2009

AERODROME/FACILITY DIRECTORY B225

## EASTERVILLE MB

CKM6

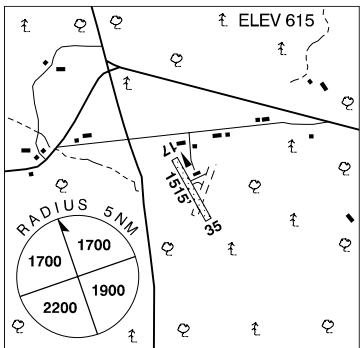
<b>REF</b>	N53 07 W99 48 Adj E 7°E UTC-6(5) Elev 850' A5016 E-16 E-17
<b>OPR</b>	Govt of Manitoba 204-677-6722 Reg
<b>PF</b>	C-1,2,4
<b>FLT PLN</b>	NOTAM FILE CYQD
<b>FIG</b>	Winnipeg 866-WXBRIEF (Toll free within Canada) or 866-541-4103 (Toll free within Canada & USA)
<b>RWY DATA</b>	Rwy 12(118°)/30(298°) 2600x75 gravel/clay Rwy 12 slopes down.
<b>RCR</b>	Opr Ltd maint
<b>COMM</b>	
<b>ATF</b>	tfc 123.2 5NM 3900 ASL
<b>CAUTION</b>	Lgtd twr 1100 ASL (250 AGL) 0.9NM S of A/D.



## EAST GORE ECO AIRPARK NS

CCY4

<b>REF</b>	N45 07 03 W63 42 10 2.5N 19°W UTC-4(3) Elev 615' A5003 F-22
<b>OPR</b>	J. Parlee 902-632-2402 902-499-0084 Reg PNR
<b>PF</b>	B-1 C-2,3,4 D-5,6
<b>FLT PLN</b>	NOTAM FILE CYHZ
<b>FIG</b>	Halifax 866-WXBRIEF or (French) 866-GOMÉTÉO (Toll free within Canada) or 866-541-4106 (Toll free within Canada & USA)
<b>RWY DATA</b>	Rwy 17/35 1515x60 turf Rwy soft when wet.
<b>RCR</b>	Opr No win maint
<b>COMM</b>	
<b>ATF</b>	tfc 123.2 5NM 3700 ASL
<b>CAUTION</b>	Twr 2.5NM SW 326 AGL 1050 ASL painted and lgtd and Twr 1NM SW 384 AGL 1135 ASL painted and lgtd.



# CANADA FLIGHT SUPPLEMENT / GPH 205

Effective 0901Z 20 November 2008 to 0901Z 15 January 2009

## B226 AERODROME/FACILITY DIRECTORY

### EASTMAIN RIVER QC

CZEM

<b>REF</b>	N52 13 35 W78 31 21 1SW 15°W UTC-5(4) Elev 24' A5009 A5018 E-18 LO3 CAP	
<b>OPR</b>	Eastmain River Band Council 819-977-0332/0333 Cert	
<b>PF</b>	A-1 C-2,3,4,5	
<b>FLT PLN</b>	NOTAM FILE CYGL <b>FIG</b> (bil) Québec 866-GOMÉTÉO or 866-WXBRIEF (Toll free within Canada) or 866-541-4105 (Toll free within Canada & USA) <b>ACC</b> Montréal 800-633-1353 <b>CARS</b> 819-977-0332 Ltd hrs <b>WX</b> METAR dur CARS hrs	
<b>RWY DATA</b>	Rwy 02(020°)/20(200°) 3511x100 gravel	
<b>RCR</b>	Opr 14-21Z† Mon, Wed, Fri; 15-22Z† Tue, Thu; 15-20Z† Sat	
<b>LIGHTING</b>	02-AS(TE ME), 20-AS(TE ME) ARCAL-122.1 type K	
<b>COMM</b>	<b>MF</b> apt rdo (English only) ltd hrs O/T tfc 122.1 5NM 3100 ASL (CAR 602.98) <b>APRT RDO</b> 122.1 (V) 14-21Z† Mon-Fri; 17-22Z† Sun	
<b>NAV</b>	<b>NDB</b> ZEM 338 (L) N52 13 51 W78 31 03 230° 0.3NM to A/D	

### EATONIA (ELVIE SMITH) MUNI SK

CJG2

<b>REF</b>	N51 13 08 W109 23 33 Adj S 14°E UTC-6 Elev 2365' A5006 E-16	
<b>OPR</b>	Town 306-967-2251 Reg	
<b>PF</b>	B-1 C-2,4,5	
<b>FLT PLN</b>	NOTAM FILE CYYN <b>FIG</b> Edmonton 866-WXBRIEF (Toll free within Canada) or 866-541-4102 (Toll free within Canada & USA)	
<b>SERVICES</b>	<b>S</b> 4,5	
<b>RWY DATA</b>	Rwy 08(087°)/26(267°) 2500x60 turf	
<b>RCR</b>	T. Douglas 306-967-2266 or C. Bailey 306-967-2251 Fax 306-967-2267 No win maint	
<b>COMM</b>	<b>ATF</b> tfc 123.2 5NM 5400 ASL	
<b>PRO</b>	Rgt hand circuits rwy 08 (CAR 602.96).	
<b>CAUTION</b>	Extreme turbulence with N wind vic of grain elevator N of rwy.	

# CANADA FLIGHT SUPPLEMENT / GPH 205

Effective 0901Z 20 November 2008 to 0901Z 15 January 2009

AERODROME/FACILITY DIRECTORY B227

## ECHO VALLEY BC

CBJ4

<b>REF</b>	N51 14 30 W121 59 39 19°E UTC-8(7) Elev 3650' A5004 E-15	
<b>OPR</b>	Echo Valley Ranch and SPA 250-459-2386 Reg PNR	
<b>PF</b>	B-1,2,5	
<b>FLT PLN</b>	NOTAM FILE CYKA	
<b>FIC</b>	Kamloops 866-WXBRIEF (Toll free within Canada) or 866-541-4101 (Toll free within Canada & USA)	
<b>SERVICES</b>		
<b>FUEL</b>	100LL, JA Emerg use only	
<b>S</b>	4,5	
<b>RWY DATA</b>	Rwy 07(072°)/25(252°) 3412x60 asphalt First 2000' rwy 07 up 4%.	
<b>RCR</b>	Opr No win maint.	
<b>COMM</b>		
<b>ATF</b>	tfc 123.2 5NM 6700 ASL	
<b>CAUTION</b>	Unmarked 5' fence on thld 25. Unmarked p-line 50' E thld 25. Terrain rises rapidly E of rwy 25. Numerous trees to 60 AGL, 150' N & E of rwy. May encounter turbulence & strong downdrafts on apch. Crosswinds fr the S. Freq bird activity Apr - Sep.	

## EDAM SK

CJU7

<b>REF</b>	N53 11 06 W108 47 21 1SW 15°E UTC-6 Elev 1790' A5015 E-16	
<b>OPR</b>	R.M. of Turtle River 306-397-2311 Reg	
<b>PF</b>	C-1,2,4,5	
<b>FLT PLN</b>	NOTAM FILE CYP A	
<b>FIC</b>	Edmonton 866-WXBRIEF (Toll free within Canada) or 866-541-4102 (Toll free within Canada & USA)	
<b>RWY DATA</b>	Rwy 12(125°)/30(305°) 2540x60 turf	
<b>RCR</b>	Opr Ltd win maint	
<b>COMM</b>		
<b>ATF</b>	tfc 123.2 5NM 4800 ASL	
<b>CAUTION</b>	Golf course crosses rwy. Fence at thld 12.	

# CANADA FLIGHT SUPPLEMENT / GPH 205

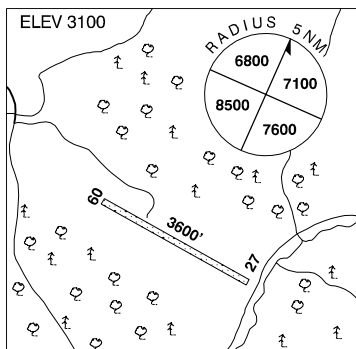
Effective 0901Z 20 November 2008 to 0901Z 15 January 2009

## B228 AERODROME/FACILITY DIRECTORY

### EDDONTENAJON / ISKUT VILLAGE BC

**CBU2**

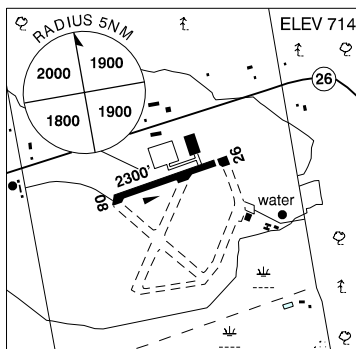
<b>REF</b>	N57 50 50 W129 58 58 0.6N 24°E UTC-8(7) Elev 3100' A5021 D-12
<b>OPR</b>	Full Spectrum Entreprises Ltd 250-234-3080 Reg
<b>FLT PLN</b>	NOTAM FILE CYDL
<b>FIC</b>	Whitehorse 866-WXBRIEF (Toll free within Canada) or 866-541-4107 (Toll free within Canada & USA)
<b>RWY DATA</b>	Rwy 09/27 3600x50 gravel/turf
<b>RCR</b>	Opr No win maint
<b>COMM</b>	
<b>ATF</b>	tfc 123.2 5NM 6100 ASL



### EDENVALE ON

**CNV8**

<b>REF</b>	N44 26 28 W79 57 46 2.8W 10°W UTC-5(4) Elev 714' A5000
<b>OPR</b>	Edenvale Flying Club 705-428-3111 Reg
<b>PF</b>	A-1 C-2 D-3,4,5,6
<b>FLT PLN</b>	NOTAM FILE CYEE
<b>FIC</b>	London 866-WXBRIEF (Toll free within Canada) or 866-541-4104 (Toll free within Canada & USA)
<b>SERVICES</b>	
<b>FUEL</b>	100LL, MG-4
<b>OIL</b>	W100, 20W50
<b>S</b>	1,2,4,5
<b>RWY DATA</b>	Rwy 26(260°)/08(080°) 2300x100 asphalt Thld 26 displ 200'
<b>COMM</b>	
<b>ATF</b>	UNICOM ltd hrs O/T tfc 122.775 5NM 3700 ASL
<b>CAUTION</b>	Tower 200 AGL 1NM NE. Ocsi wildlife on rwy. Remote ctl acct up to 500' AGL at S end of A/D.

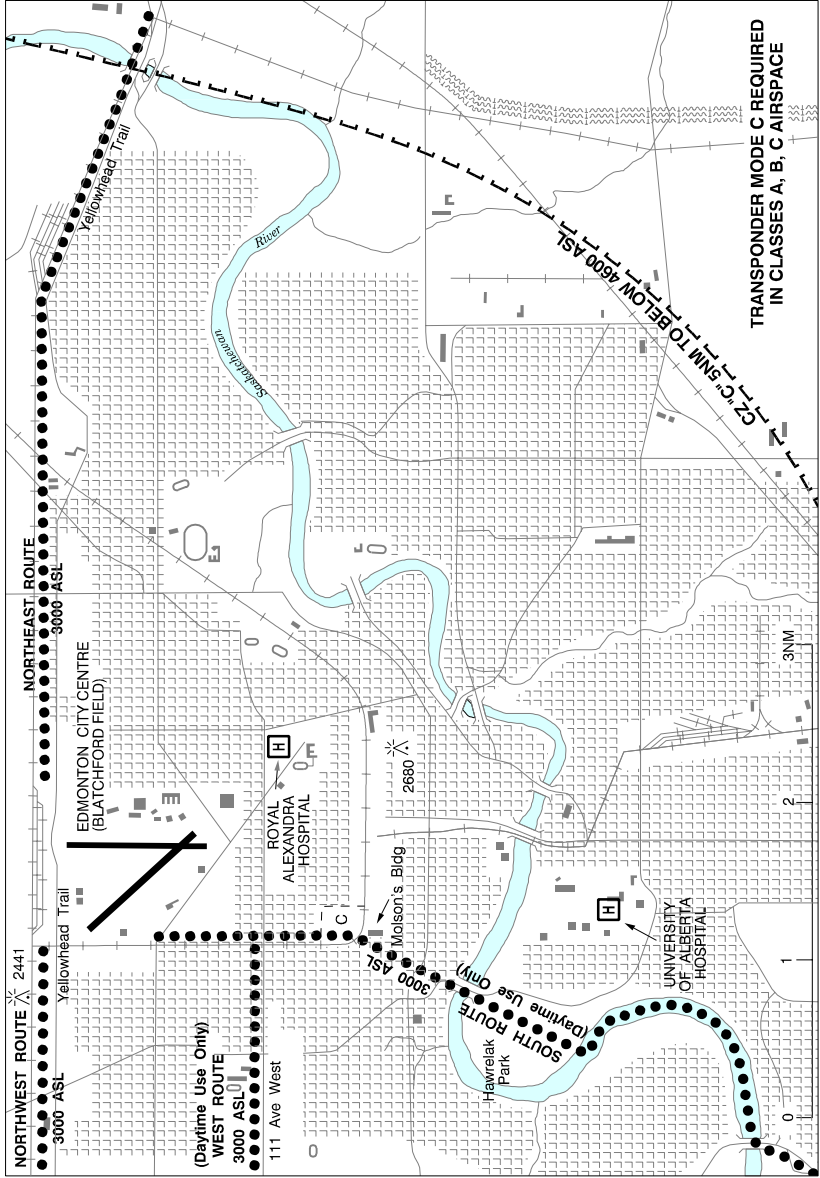


# CANADA FLIGHT SUPPLEMENT / GPH 205

Effective 0901Z 20 November 2008 to 0901Z 15 January 2009

AERODROME/FACILITY DIRECTORY B229

## EDMONTON CITY CENTRE (BLATCHFORD FIELD) HELI VFR TERMINAL PROCEDURES CHART



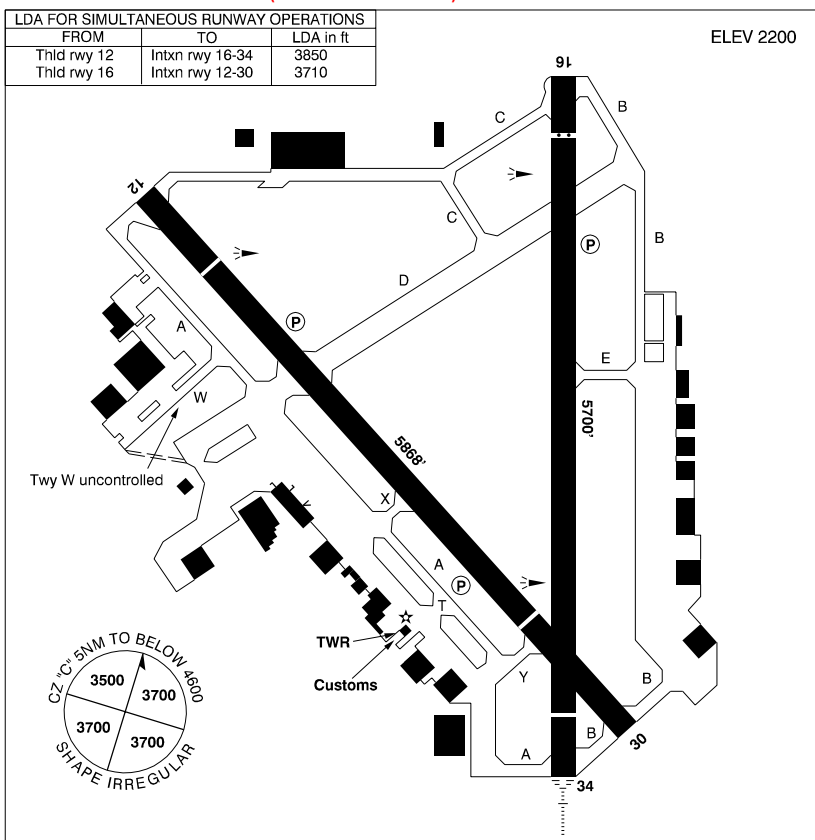
# CANADA FLIGHT SUPPLEMENT / GPH 205

Effective 0901Z 20 November 2008 to 0901Z 15 January 2009

## B230 AERODROME/FACILITY DIRECTORY

### EDMONTON CITY CENTRE (BLATCHFORD FIELD) AB

CYXD



<b>REF</b>	N53 34 21 W113 31 14 Adj 17°E UTC-7(6) Elev 2200' VTA A5015 E-15 E-16 LO2 HI3 T1 CAP
<b>OPR</b>	ATCO Frontec 780-477-2442 Cert Ldg fees
<b>PF</b>	A-1,2,3,6 B-5 C-4
<b>FLT PLN</b>	NOTAM FILE CYXD
<b>FIG</b>	Edmonton 780-890-8386 or Edmonton 866-WXBRIEF (Toll free within Canada) or 866-541-4102 (Toll free within Canada & USA)
<b>ACC</b>	Edmonton IFR 888-358-7526 or 780-890-8304/8305
<b>WX</b>	Legacy AWOS (see COMM)
	TAF H24, issue times: 00, 06, 12, 18Z.
<b>DUAT</b>	Esso Avitat; Shell Aerocentre
<b>PIK</b>	Esso Avitat FBO, airside access
<b>SERVICES</b>	
<b>FUEL</b>	100LL, JA-1, JB, FSII, (CON S IP JA-1, FSII)
<b>OIL</b>	All
<b>S</b>	1,2,3,4,5,6 15-24Z† Mon-Fri
<b>JASU</b>	Elect start 10/15
<b>PVT ADV</b>	Esso 123.0 780-454-6525; Shell 123.0 780-453-0200; Air Ambulance 131.375
<b>MIL CON</b>	Executive Services (Shell) 780-453-0200



# CANADA FLIGHT SUPPLEMENT / GPH 205

Effective 0901Z 20 November 2008 to 0901Z 15 January 2009

AERODROME/FACILITY DIRECTORY B231

## EDMONTON CITY CENTRE (BLATCHFORD FIELD) AB (Cont'd)

CYXD

<b>RWY DATA</b>	Rwy 12(121°)/30(301°) 5868x200 asphalt Thld 12 displ 800'. Thld 30 displ 1187'. Rwy 30 up 0.36%. Rwy 16(163°)/34(343°) 5700x200 asphalt Thld 16 displ 500'. Thld 34 displ 540'. Twy W uncontrolled. PLR/PCN. All rwys rstd to 140,000 lbs.
<b>TWY</b> <b>RCR</b>	
<b>LIGHTING</b>	12-(TE ME) P2, 16-AS(T HI) P2, 30-(TE ME) P2, 34-AE(non-std 2200')(TE HI) ARCAL-119.1 type K, cont low ints lgt. Key mic 7 times for high; 5 times for medium ints lgt.
<b>COMM</b>	
<b>RCO</b> <b>ATIS</b> <b>CLNC DEL</b> <b>GND</b> <b>TWR</b> <b>MF</b> <b>ARR</b> <b>DEP</b> <b>Legacy</b> <b>AWOS</b>	Red Deer rdo 119.1 (RAAS) 06-13Z± (emerg only 403-886-4547) 114.9 125.4 13-06Z± City Centre 121.3 13-06Z± City Centre 121.9 13-06Z± City Centre 119.1 283.7 (E) 13-06Z± (emerg only 780-413-5501) Red Deer rdo 06-13Z± O/T twr 119.1 5NM 3400 ASL (CAR 602.98) Edmonton Tml 119.5 226.3 Edmonton Tml 119.5 226.3 128.625 (not avbl dur twr hrs ops)
<b>NAV</b>	
<b>VOT</b> <b>NDB</b> <b>DME</b> <b>ILS</b>	114.9 (A) EDMONTON XD 266 (M) N53 38 37 W113 30 47 162° 3.8 NM to A/D BLATCHFORD ZXD 201 (L) N53 29 58 W113 30 46 342° 3.9NM to A/D IXD 109.5 Ch 32 N53 34 08 W113 30 40 IXD 109.5 (Rwy 34/16) RVR
<b>PRO</b>	Rgt hand circuits rwys 30 & 34 (CAR 602.96). Transponder rqrd in CZ. For VFR rtes see Edmonton VTPC or as directed by ATC. Do not descend below 3400 ASL until past the "XD NDB" when on a visual apch to rwy 16. Charter operators using acft larger than 19 seats require PPR 780-890-8213. <b>NOISE ABATEMENT: Helicopters</b> shall comply with Heli VTPC or as directed by ATC. <b>Ab Initio Flying Tng</b> not permitted within the CZ. <b>Restrictions</b> - Some acft ops are rstd btwn 2200-0700 lcl time, for info tel 780-477-2442. All acft are prohibited fr doing run-ups (exc run-ups done as part of pre-takeoff procedures) btwn 2200-0700 lcl time. <b>Preferential Rwy Determination (H24)</b> - Exc for purposes of ATC, the order of rwy priority shall be: <b>Dep</b> - Rwy 30, 34, 16 & 12. Acft climb on rwy hdg to 3200 ASL (4500 ASL for turbo-jets, exc 4000 ASL for rwy 30) BPOC. <b>Arr</b> - Rwy 12, 16, 30 & 34. Acft not to descend below 3200 ASL (4500 ASL for turbo-jets) until commencing final apch for ldg. All acft use rwys 12 & 30 as preferred rwys for arr & dep btwn 0000-0600 lcl time unless tfc, wind, weather, or rwy conditions require use of a less preferred rwy.

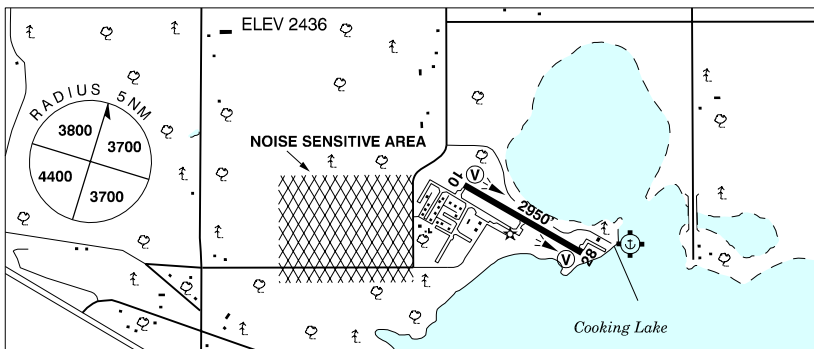
# CANADA FLIGHT SUPPLEMENT / GPH 205

Effective 0901Z 20 November 2008 to 0901Z 15 January 2009

B232 AERODROME/FACILITY DIRECTORY

## EDMONTON / COOKING LAKE AB

CEZ3



<b>REF</b>	N53 25 39 W113 06 57 16SE 17°E UTC-7(6) Elev 2436' VTA A5015 E-15 E-16 LO2
<b>OPR</b>	Edmonton Airports 780-890-8900/8327 Reg
<b>PF</b>	A-1 D-2,3,4,5,6
<b>FLT PLN</b>	NOTAM FILE CYEG
<b>FIC</b>	Edmonton 780-890-8386 or Edmonton 866-WXBRIEF (Toll free within Canada) or 866-541-4102 (Toll free within Canada & USA)
<b>ACC</b>	Edmonton IFR 888-358-7526 or 780-890-8304/8305
<b>SERVICES</b>	
<b>FUEL</b>	100LL, JB(D) O/R 780-922-3972/0112
<b>OIL</b>	All
<b>S</b>	1,2,3,4,5,6
<b>RWY DATA</b>	Rwy 10(103°)/28(283°) 2950x75 asphalt
<b>RCR</b>	Opr For win cond ctc 780-922-5511
<b>LIGHTING</b>	10-(TE ME) V1, 28-(TE ME) V1 ARCAL-123.2 type K
<b>COMM</b>	
<b>ATF</b>	tfc 123.2 5NM 5500 ASL
<b>PRO</b>	For VFR rtes see Edmonton VTPC or as directed by ATC. Pilots are to avoid overflying noise sensitive area depicted on A/D sketch at less than circuit alt (3500 ASL).

# CANADA FLIGHT SUPPLEMENT / GPH 205

Effective 0901Z 20 November 2008 to 0901Z 15 January 2009

AERODROME/FACILITY DIRECTORY B233

## EDMONTON / EASTPORT AB (Heli)

CEP8

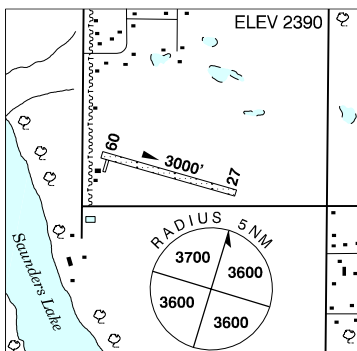
<b>REF</b>	N53 30 30 W113 20 00 1S 17E UTC-7(6) Elev 2320' A5015
<b>OPR</b>	Ross Harris 780-417-4710 or 780-920-4944 Cert PPR
<b>PF</b>	C-1,2,3,4,5,6
<b>FLT PLN</b>	NOTAM FILE CYEG
<b>FIC</b>	Edmonton 780-890-8386 or Edmonton 866-WXBRIEF (Toll free within Canada) or 866-541-4102 (Toll free within Canada & USA)
<b>ACC</b>	Edmonton IFR 888-358-7526 or 780-890-8304/8305
<b>PAD DATA</b>	100' dia turf
<b>COMM</b>	
<b>ATF</b>	tfc 123.2 5NM 3400 ASL
<b>PRO</b>	Arr/dep btwn 180°-300°. Helis are to arr/dep from large field 500' due west of prkg area and air taxi to prkg spot by the windsock. Avoid overflying nearby residences. Ctc City Centre twr before entering Class C airspace.



## EDMONTON / GARTNER AB

CFQ7

<b>REF</b>	N53 16 54 W113 27 18 15S 17°E UTC-7(6) Elev 2390' VTA A5015 E-15 E-16 LO2
<b>OPR</b>	L. Gartner 780-986-8781/955-7433 Reg PPR
<b>PF</b>	B-1 D-2,3,4,5,6
<b>FLT PLN</b>	NOTAM FILE CYEG
<b>FIC</b>	Edmonton 780-890-8386 or Edmonton 866-WXBRIEF (Toll free within Canada) or 866-541-4102 (Toll free within Canada & USA)
<b>ACC</b>	Edmonton IFR 888-358-7526 or 780-890-8304/8305
<b>SERVICES</b>	
<b>FUEL</b>	100LL
<b>OIL</b>	15W50 (Shell)
<b>RWY DATA</b>	Rwy 09(089°)/27(269°) 3000x50 turf
<b>RCR</b>	Opr
<b>LIGHTING</b>	09-(LO), 27-(LO) ARCAL-123.45 type J
<b>COMM</b>	
<b>MF</b>	Edmonton Intl twr 118.3 (CAR 602.98)
<b>PRO</b>	For VFR rtes see Edmonton VTPC or as directed by ATC. Transponder rqr'd in CZ.



# CANADA FLIGHT SUPPLEMENT / GPH 205

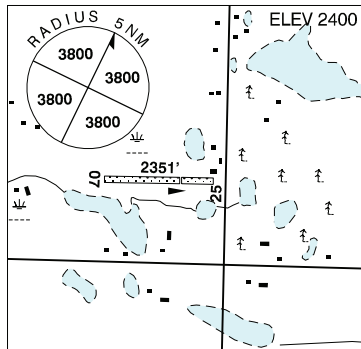
Effective 0901Z 20 November 2008 to 0901Z 15 January 2009

B234 AERODROME/FACILITY DIRECTORY

## EDMONTON / GOYER FIELD AB

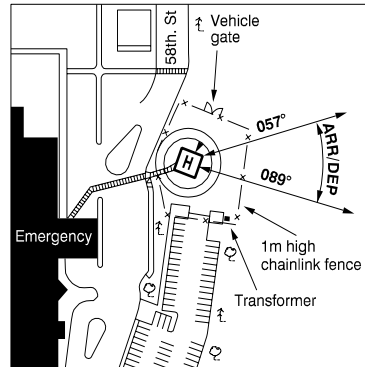
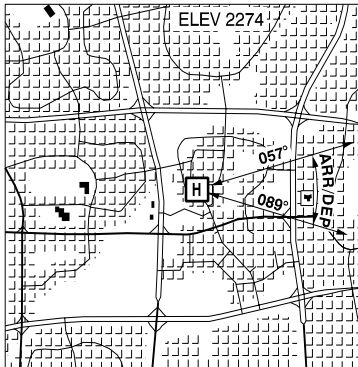
CGF2

<b>REF</b>	N53 34 35 W112 58 51 26E 16° E UTC-7(6) Elev 2400' VTA A5015
<b>OPR</b>	Jeff Goyer 780-922-7412 Reg PPR
<b>PF</b>	C-1,2 D-3,4,5,6
<b>FLT PLN</b>	NOTAM FILE CYEG
<b>FIC</b>	Edmonton 866-WXBRIEF (Toll free within Canada) or 866-541-4102 (Toll free within Canada & USA)
<b>RWY DATA</b>	Rwy 07(074°)/25(254°) 2351X70 Turf thld Rwy 25 displ 723'
<b>RCR</b>	Opr Ltd maint, cond subject to seasonal and/or climatic variations. Soft in spring.
<b>COMM</b>	
<b>ATF</b>	tfc 123.2 5nm 5400' ASL
<b>PRO</b>	No training flights or approaches



## EDMONTON / GREY NUNS COMMUNITY HOSP AB (Heli)

CES8



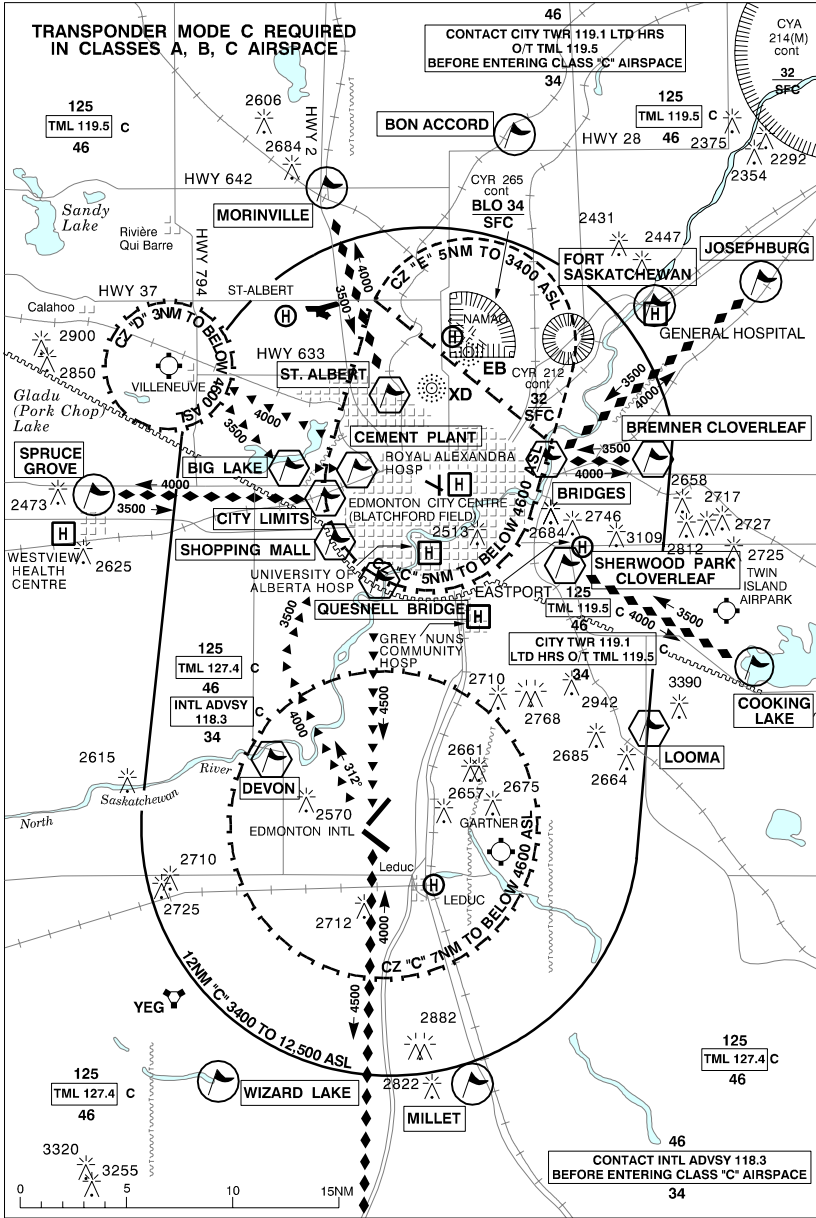
<b>REF</b>	N53 27 44 W113 25 40 17°E UTC-7(6) Elev 2274' VTA A5015
<b>OPR</b>	Caritas Health Group 780-735-7140 Cert PPR
<b>FLT PLN</b>	NOTAM FILE CYXD
<b>FIC</b>	Edmonton 780-890-8386 or Edmonton 866-WXBRIEF (Toll free within Canada) or 866-541-4102 (Toll free within Canada & USA)
<b>ACC</b>	Edmonton IFR 888-358-7526 or 780-890-8304/8305
<b>PAD DATA</b>	64' dia concrete/asphalt 85' dia (rstd to acft max length 42.5')
<b>RCR</b>	Opr
<b>LIGHTING</b>	FH
<b>COMM</b>	
<b>ATF</b>	tfc 123.2 2NM 3400 ASL
<b>ARR</b>	Edmonton Tml 119.5 226.3
<b>DEP</b>	Edmonton Tml 119.5 226.3
<b>PRO</b>	Arr/dep btwn 057°-089° fr heli Ctc Edmonton tml before entering Class C airspace or City Centre Twr/Edmonton rdo 119.1 if proceeding NW through City Centre CZ.

# CANADA FLIGHT SUPPLEMENT / GPH 205

Effective 0901Z 20 November 2008 to 0901Z 15 January 2009

AERODROME/FACILITY DIRECTORY B235

## EDMONTON VFR TERMINAL PROCEDURES CHART



# CANADA FLIGHT SUPPLEMENT / GPH 205

Effective 0901Z 20 November 2008 to 0901Z 15 January 2009

B236 AERODROME/FACILITY DIRECTORY

---

## EDMONTON VFR TERMINAL PROCEDURES CHART (Cont'd)

LOCATION	IDENT	LAT/LONG
BIG LAKE	VCBGL	N53° 35.00 W113° 46.00
BON ACCORD	VCBAC	N53° 50.50 W113° 24.42
BREMNER CLOVERLEAF	VCBCL	N53° 34.30 W113° 14.70
BRIDGES	VCBRG	N53° 34.30 W113° 22.30
CEMENT PLANT	VCCMT	N53° 35.00 W113° 36.00
CITY LIMITS	VCCTY	N53° 33.00 W113° 39.00
COOKING LAKE	VCOOK	N53° 25.00 W113° 07.50
DEVON	VCDVN	N53° 22.00 W113° 43.00
FORT SASKATCHEWAN	VCFSK	N53° 42.00 W113° 13.00
JOSEPHBURG	VCJOS	N53° 42.70 W113° 04.00
LOOMA	VCLMA	N53° 21.50 W113° 15.00
MILLET	VCMLT	N53° 05.50 W113° 28.50
MORINVILLE	VCMNV	N53° 48.50 W113° 37.50
QUESNELL BRIDGE	VCQSN	N53° 30.25 W113° 34.00
ST. ALBERT	VCALB	N53° 38.20 W113° 34.70
SHERWOOD PARK CLOVERLEAF	VCSWP	N53° 31.00 W113° 20.50
SHOPPING MALL	VCSHP	N53° 31.50 W113° 37.00
SPRUCE GROVE	VCSGR	N53° 33.00 W113° 53.50
WIZARD LAKE	VCWZD	N53° 06.50 W113° 50.00

---

---

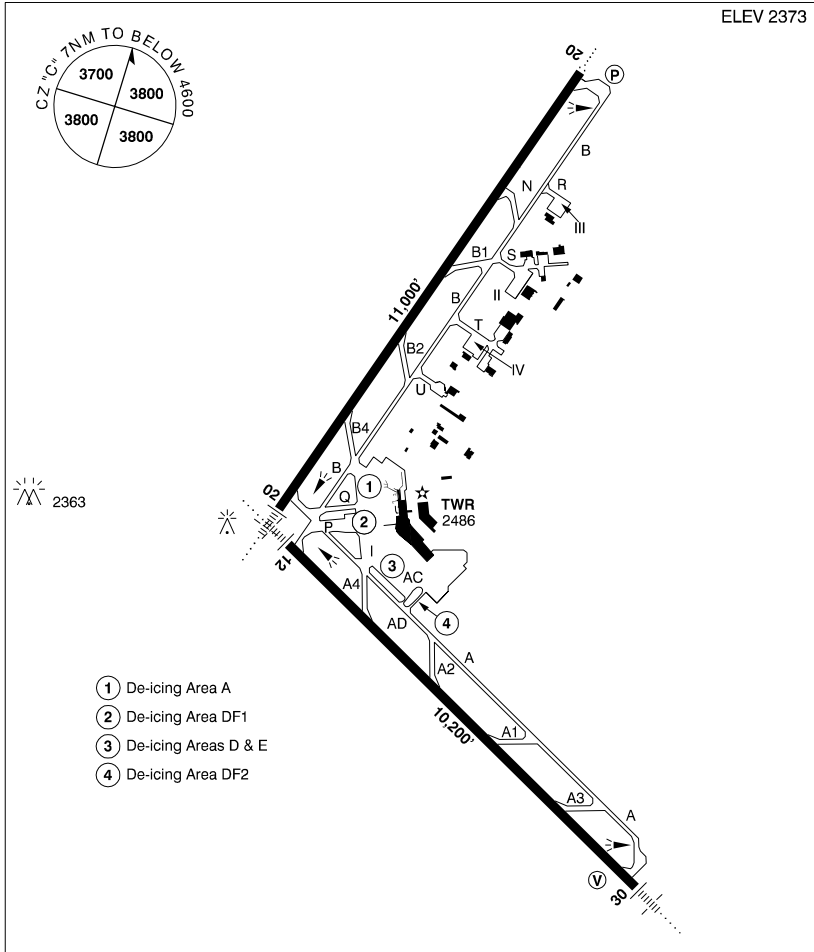
# CANADA FLIGHT SUPPLEMENT / GPH 205

Effective 0901Z 20 November 2008 to 0901Z 15 January 2009

AERODROME/FACILITY DIRECTORY B237

**EDMONTON INTL AB**

**CYEG**



<b>REF</b>	N53 18 35 W113 34 47 14SSW 17°E UTC-7(6) Elev 2373' VTA A5015 E-15 E-16 LO2 HI3 T1 CAP RCAP OC
<b>OPR</b>	Edmonton Regional Airports Authority 780-890-8327 Cert
<b>PF</b>	A-1,2,3,4,6, C-5
<b>CUST</b>	AOE 888-226-7277 PNR
<b>FLT PLN</b>	NOTAM FILE CYEG
<b>FIG</b>	Edmonton 866-WXBRIEF (Toll free within Canada) or 866-541-4102 (Toll free within Canada & USA) or 780-890-8386
<b>ACC</b>	IFR 888-358-7526 or 780-890-8304/8305 NOTAM only 780-890-8393
<b>WX</b>	METAR H24. TAF H24, issue times: 00, 03, 06, 09, 12, 15, 18, 21Z.
<b>DUAT</b>	Executive Flight Centre; Shell Aerocentre

# CANADA FLIGHT SUPPLEMENT / GPH 205

Effective 0901Z 20 November 2008 to 0901Z 15 January 2009

B238 AERODROME/FACILITY DIRECTORY

## EDMONTON INTL AB (Cont'd)

CYEG

<b>SERVICES</b>	
<b>FUEL</b>	100, JA-1, JB, FSII, HPR, (CON S IP JA-1, FSII)
<b>OIL</b>	All
<b>S</b>	1,2,3,4,5,6
<b>ARFF</b>	8, discrete emerg freq 122.675
<b>SUP FL</b>	D & A-ice
<b>JASU</b>	CE 16, Elect 15/25, Air Starter
<b>PVT ADV</b>	Executive Flight Centre 122.95, 780-890-8640; Shell Aerocentre Flight Tech Aviation 123.0, 780-890-1300 or 800-668-4766
<b>MIL CON</b>	Flight Tech Avn Svcs (Shell) 780-890-1300
<b>RWY DATA</b>	Rwy 02(018°)/20(198°) 11000x200 asphalt Rwy 12(118°)/30(298°) 10200x200 asphalt Rwy 12 up 0.63% first 6463'
<b>TWY</b>	Twys R, S, T & U uncontrolled. Ltd twr vis on portion of twy B, see A/D sketch.
<b>APRON</b>	Ctc Flight Tech Aviation UNICOM 123.0 or 780-890-1300 or 800-668-4766 to arrange prkg on Apron II.
<b>RCR</b>	Opr CRFI, PLR/PCN
<b>LIGHTING</b>	02-AN(TE HI), 12-AN(TE HI), 20-AO AS(TE HI) P3, 30-AN(TE HI) V3
<b>COMM</b>	
<b>RCO</b>	Edmonton rdo 122.5 (FISE) 126.7 (FISE) (E) (emerg only 780-890-8386)
<b>ATIS</b>	128.0
<b>CLNC DEL</b>	124.1
<b>GND</b>	121.7 275.6
<b>TWR</b>	118.3 381.2 (E) (emerg only 780-890-4733)
<b>ARR</b>	Edmonton Tml 120.5 363.8 (E)
<b>DEP</b>	Edmonton Tml 133.65 363.8 (E)
<b>VFR ADV</b>	Twr 118.3 119.5 127.4 (See Edmonton VTPC)
<b>NAV</b>	
<b>VOT</b>	114.8
<b>NDB</b>	CALMAR ZSD 308 (L) N53 15 15 W113 39 36 018° 4.0NM to A/D NISKU ZEG 379 (L) N53 23 43 W113 29 42 198° 4.5NM to A/D DEVON ZET 292 (L) N53 21 10 W113 40 21 118° 3.9NM to A/D LEDUC ZAB 215 (L) N53 14 35 W113 29 22 298° 3.7NM to A/D
<b>VORTAC</b>	YEG 117.6 Ch 123 N53 11 08 W113 52 01 (2557') 036° 12.2NM to A/D
<b>ILS</b>	IEG 110.3 (Rwy 02/20) RVR; IFP 109.9 (Rwy 12) RVR; IKB 109.1 (Rwy 30) RVR
<b>PRO</b>	Rgt hand circuits rwy 30 (CAR 602.96). Transponder rqrd in CZ. For VFR routes see Edmonton VTPC or as directed by ATC. NOISE ABATEMENT: Avoid flying over town of Leduc below 5000 ASL. Turbo jet / Turbo fan acft dep rwy 12: Climb on track 118° via the "LEDUC" NDB for vectors, <b>no rgt turns before passing</b> the "LEDUC" NDB.



# CANADA FLIGHT SUPPLEMENT / GPH 205

Effective 0901Z 20 November 2008 to 0901Z 15 January 2009

AERODROME/FACILITY DIRECTORY B239

## EDMONTON CENTRE (emerg only 780-890-8397)

CZEG

134.9 **134.9** 240.9 **240.9** 294.5 **294.5**  
**Baker Lake** 133.4 **133.4**  
**Banff** 133.75 **133.75**  
**Big Trout Lake** **133.6** (FL290 & above)  
**Brooks** 125.05 **125.05** 132.65 **132.65** 229.3 **229.3**  
**Calgary** 133.3 **133.3** 135.12 **135.12** 243.5 **243.5** 265.6 **265.6**  
**Cambridge Bay** **132.225** (FL290 & above)  
**Cape Dorset** **134.25** (FL230 & above)  
**Cape Dyer** **135.5** (FL230 & above)  
**Chisasibi** 134.625  
**Churchill** **123.9** (FL290 & above)  
**Coral Harbour** 133.7 **133.7**  
**Dease Lake** 134.05 **134.05** (FL290 & above)  
**Delia** 124.45 253.5  
**Dewar Lake** **135.2** (FL230 & above)  
**Ekati** **133.175** (FL290 & above)  
**Flatbush** 134.7 **134.7** 250.05 **250.05**  
**Fort McMurray** **132.7** (FL290 & above) 135.7 & **135.7** (FL280 & below)  
**Fort Nelson** 132.87 & **132.87** (FL280 & below) 134.85 **134.85** 290.6 **290.6**  
**Fort St. John** 132.6 **132.6** 285.4 **285.4** (FL280 & below) **134.425** **229.4** (FL290 & above)  
**Fort Severn** **135.0** (FL290 to FL450)  
**Fort Simpson** **132.25** (FL290 & above) 135.4 & **135.4** (FL280 & below)  
**Grande Prairie** 134.5 **134.5**  
**Hall Beach** **134.4** (FL230 & above)  
**Hay River** **124.2** (FL290 & above) 133.85 & **133.85** (FL280 & below)  
**High Level** 123.7 & **123.7** & 135.1 & **135.1** (FL280 & below) **132.15** (FL290 & above)  
**Holman Island** **133.825** (FL290 & above)  
**Hudson Bay** **132.075** (FL290 & above)  
**Inukjuak** **135.3** (FL290 & above)  
**Inuvik (Mike Zubko)** 132.4 **132.4** **134.475** (FL290 & above)  
**Iqaluit** **118.475** (FL230 & above)  
**Island Lake** **134.35** (FL290 & above)  
**Kugluktuk** **133.525** (FL290 & above)  
**La Ronge (Barber Field)** **132.55** (FL290 & above)  
**Lethbridge** 132.75 **135.75** **255.65** 265.2  
**Lloydminster** 133.45 **133.45** 340.7 **340.7**  
**Lynn Lake** **133.0** (FL290 & above)  
**Mayo** **124.15** (FL290 & above) 134.65 **134.65** (FL280 & below)  
**Norman Wells** 134.825 & **134.825** (FL280 & below)  
**Ogoki Post** **132.6** (FL290 & above)  
**Peace River** **133.2** (FL290 & above) 135.275 & **135.275** (FL280 & below)  
**Peawanuck** **124.3** (FL290 & above)  
**Pond Inlet** **133.95** (FL230 & above)  
**Puvirnituq** **118.4** (FL290 & above)  
**Rankin Inlet** 134.0 **134.0** (FL230 & above)  
**Red Deer** 132.85 **132.85**  
**Resolute Bay** **135.475** (FL270 & Above)  
**Rocky Mtn House** 134.3 **134.3**  
**Slave Lake** 127.825 **127.825** 304.2 **304.2** (FL280 & below)  
**Stony Rapids** 124.475 **124.475** (FL280 & below) **133.075** **134.8** (FL290 & above)  
**Taloyoak** **135.025** (FL230 & above)  
**The Pas** **133.5** (FL290 & above)  
**Thompson** **134.5** (FL290 & above)  
**Watson Lake** **132.675** (FL290 & above)  
**Whitecourt** 132.05 **132.05** 135.6 **135.6** 293.7 **293.7** 341.7 **341.7**  
**Whitehorse Intl** 132.1 **132.1** 134.15 & **134.15** (FL280 & below) 290.6 **290.6**  
**Yellowknife** 135.8 **132.5**

# CANADA FLIGHT SUPPLEMENT / GPH 205

Effective 0901Z 20 November 2008 to 0901Z 15 January 2009

## B240 AERODROME/FACILITY DIRECTORY

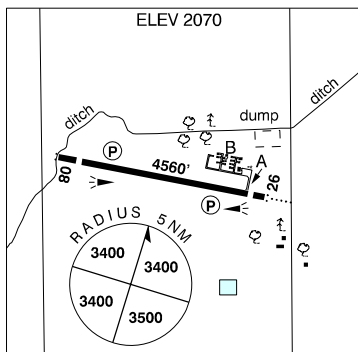
### EDMONTON FIC – RCO

**Banff** 123.55 (FISE) (N51 09 W115 35)  
**Buffalo Narrows** 123.275 (FISE) (N55 51 W108 29)  
**Calgary/Springbank** 122.5 (FISE) 126.7 (FISE) (N51 06 W114 22)  
**Chetwynd** 126.7 (FISE) (N55 40 W121 35)  
**Edmonton** 122.5 (FISE) 126.7 (FISE) (E) (N53 19 W113 35)  
**Fort Chipewyan** 123.475 (FISE) 126.7 (bcst) (N58 46 W111 06)  
**Fort McMurray** 123.55 (FISE) 126.7 (bcst) (N56 39 W111 14)  
**Fort Nelson** 123.55 (FISE) 126.7 (bcst) (N58 49 W122 42)  
**Fort St. John** 123.55 (FISE) 126.7 (bcst) (N56 14 W120 44)  
**Grande Prairie** 123.475 (FISE) 126.7 (bcst) (N55 11 W118 52)  
**High Level** 123.375 (FISE) 126.7 (bcst) (N58 39 W117 29)  
**Jasper-Hinton** 123.55 (FISE) (N53 25 W117 47)  
**Key Lake** 123.45 (FISE) DRCO (N57 10 W105 50)  
**Lac La Biche** 123.475 (FISE) 126.7 (bcst) (N54 46 W112 01)  
**La Ronge** 123.25 (FISE) 126.7 (FISE) (N55 09 W105 16)  
**Lethbridge** 122.5 (FISE) 126.7 (FISE) (N49 38 W112 48)  
**Lloydminster** 126.7 (FISE) (N53 19 W110 05)  
**Medicine Hat** 126.7 (FISE) (N50 01 W110 43)  
**Moose Mountain** 123.55 (FISE) DRCO (N49 43 W102 17)  
**North Battleford (Cameron McIntosh)** 123.375 (FISE) 295.0 (FISE) (N52 46 W108 15)  
**Peace River** 123.275 (FISE) 126.7 (FISE) (N56 14 W117 27)  
**Prince Albert (Glass Field)** 123.15 (FISE) 126.7 (FISE) (N53 13 W105 41)  
**Red Deer Regional** 122.5 (FISE) 126.7 (FISE) (N52 11 W113 53)  
**Regina** 122.5 (FISE) 126.7 (FISE) (N50 26 W104 40)  
**Saskatoon** 122.5 (FISE) 126.7 (FISE) (N52 11 W106 41)  
**Slave Lake** 122.1 (FISE) (N55 28 W114 47)  
**Stony Rapids** 126.7 (FISE) (N59 11 W105 55)  
**Swift Current** 123.275 (FISE) 351.3 (FISE) (N50 17 W107 41)  
**Whitecourt** 126.7 (FISE) (N54 09 W115 47)  
**Wollaston Lake** 123.55 (FISE) DRCO (N58 10 W103 45)  
**Yorkton** 123.475 (FISE) (N51 15 W102 27)

### EDMONTON / JOSEPHBURG AB

CFB6

<b>REF</b>	N53 43 41 W113 05 14 0.7N 17°E UTC-7(6) Elev 2070' VTA A5015 E-15 E-16 LO1 LO2 CAP
<b>OPR</b>	Strathcona County 780-417-7100 Reg
<b>PF</b>	A-1 D-2,3,4,5,6
<b>FLT PLN</b>	NOTAM FILE CYEG Edmonton 780-890-8386 or Edmonton 866-WXBRIEF (Toll free within Canada) or 866-541-4102 (Toll free within Canada & USA)
<b>ACC</b>	Edmonton IFR 888-358-7526 or 780-890-8304/8305
<b>WX</b>	AWOS (Pvt) (see COMM)
<b>SERVICES</b>	
<b>FUEL</b> <b>S</b>	100LL JA, HPR, FSII 1,2,3,4,5,6
<b>RWY DATA</b> <b>RCR</b>	Rwy 08(082°)/26(262°) 4560x100 asphalt Thld 08 displ 394'. Thld 26 displ 246'. Opr PLR/PCN
<b>LIGHTING</b>	08-AS(TE HI) P1, 26-AO(TE-HI)P1



# CANADA FLIGHT SUPPLEMENT / GPH 205

Effective 0901Z 20 November 2008 to 0901Z 15 January 2009

AERODROME/FACILITY DIRECTORY B241

## EDMONTON / JOSEPHBURG AB (Cont'd)

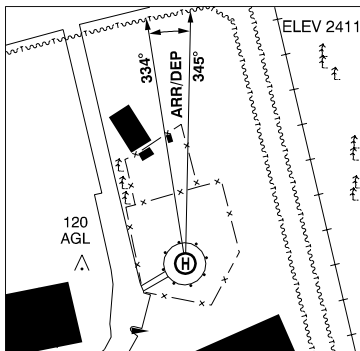
CFB6

<b>COMM</b>	
<b>ATF</b>	tfc 123.5 5NM 5100 ASL
<b>AWOS (Pvt)</b>	122.55 or 780-998-7486
<b>PRO</b>	Maintain min of 1000 AGL over chemical plant & town. Jet acft use rgt hand circuits 1500' AGL

## EDMONTON / LEDUC AB (Heli)

CLD2

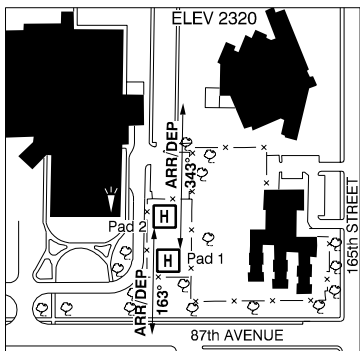
<b>REF</b>	N53 15 11 W113 32 34 ADJ 17°E UTC-7(6) Elev 2411' VTA A5015
<b>OPR</b>	City of Leduc 780-980-7290 Reg PNR
<b>PF</b>	A-1 C-2,3,4,5,6
<b>FLT PLN</b>	NOTAM FILE CYEG
<b>FIC</b>	Edmonton 866-WXBRIEF (Toll free within Canada) or 866-541-4102 (Toll free within Canada & USA)
<b>ACC</b>	Edmonton IFR 888-358-7526 or 780-890-8304/8305
<b>PAD DATA</b>	65.5' dia asphalt safety area 85.3' dia turf max length 42.6'
<b>RCR</b>	City of Leduc Fire Hall 780-980-7290
<b>LIGHTING</b>	RY(LO)
<b>COMM</b>	
<b>MF</b>	Edmonton Intl twr 118.3 (CAR 602.98)
<b>PRO</b>	Arr/dep 334°-345° fr Heli for VFR rtes see Edmonton VTPC or as directed by ATC. Transponder reqrd in CZ. Rstd to multi-engine heli only.
<b>CAUTION</b>	Twr 164' w of pad at 120' agl. Fenced compound Adj N of pad. Pwr lines along railroad E of pad and along road N of pad.



## EDMONTON / MISERICORDIA (COMMUNITY HOSP) AB (Heli)

CMC2

<b>REF</b>	N53 31 13 W113 36 39 18°E UTC-7(6) Elev 2320' VTA A5015
<b>OPR</b>	Caritas Health Group 780-735-2605 Cert PPR
<b>PF</b>	B-1,3,4 C-2,5,6
<b>FLT PLN</b>	NOTAM FILE CYXD
<b>FIC</b>	Edmonton 780-890-8386 or Edmonton 866-WXBRIEF (Toll free within Canada) or 866-541-4102 (Toll free within Canada & USA)
<b>ACC</b>	Edmonton IFR 888-358-7526 or 780-890-8304/8305
<b>PAD DATA</b>	Pad 1: 66' dia concrete 85' dia turf safety area Pad 2: 66' dia concrete 85' dia turf safety area, FATO only
<b>RCR</b>	Opr
<b>LIGHTING</b>	FH Lgt'd windsock on SE corner of facility.



# CANADA FLIGHT SUPPLEMENT / GPH 205

Effective 0901Z 20 November 2008 to 0901Z 15 January 2009

B242 AERODROME/FACILITY DIRECTORY

## EDMONTON / MISERICORDIA (COMMUNITY HOSP) AB (Heli) (Cont'd)

CMC2

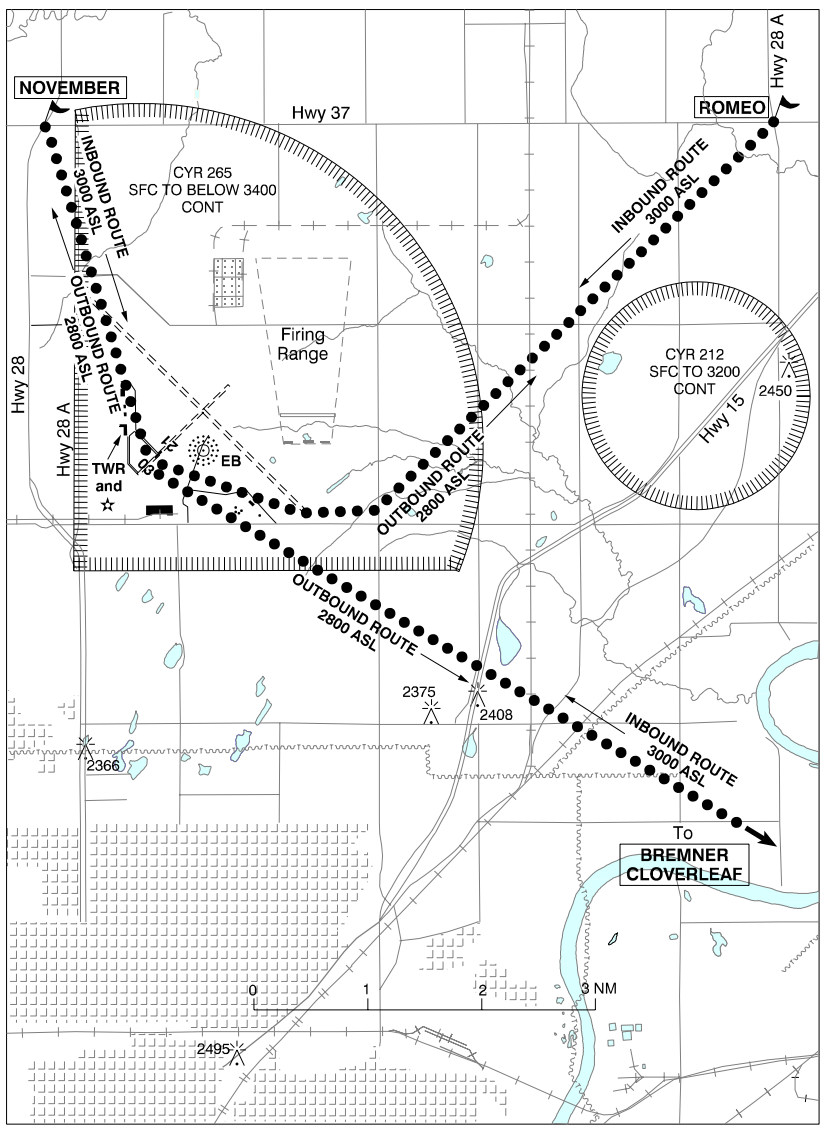
COMM	
<b>RCO</b>	Red Deer rdo 119.1 (E) (RAAS) 06-13Z‡ (emerg only 780-890-8386)
<b>TWR</b>	City Centre 119.1 283.7 (E) 13-06Z‡ O/T Edmonton rdo 5NM 4600 ASL (IRREGULAR SHAPE - See VTPC) (emerg only 780-413-5501)
<b>MF</b>	Red Deer rdo 119.1 (E) 06-13Z‡ 5NM 3400 ASL (CAR 602.98) (IRREGULAR SHAPE - See VTPC)
<b>ARR</b>	Edmonton Tml 119.5 226.3 above 4600 ASL, 13-06Z‡; O/T above 3400 ASL (overlying CZ area)
<b>DEP</b>	Edmonton Tml 119.5 226.3 above 4600 ASL, 13-06Z‡; O/T above 3400 ASL (overlying CZ area)
PRO	
	Pad 1: arr/dep path 343° fr heli. Pad 2: arr/dep path 163° fr heli.

# CANADA FLIGHT SUPPLEMENT / GPH 205

Effective 0901Z 20 November 2008 to 0901Z 15 January 2009

AERODROME/FACILITY DIRECTORY B243

## EDMONTON / NAMA0 HELI VFR TERMINAL PROCEDURES CHART



# CANADA FLIGHT SUPPLEMENT / GPH 205

Effective 0901Z 20 November 2008 to 0901Z 15 January 2009

B244 AERODROME/FACILITY DIRECTORY

## EDMONTON / NAMAQ AB (Heli)

CYED

<b>REF</b>	N53 40 09 W113 28 32 8NNE 17°E UTC-7(6) Elev 2257' VTA A5015 E-15 E-16 LO1 LO2 T1	
<b>OPR</b>	408 OPS DND 780-973-4163 CSN 319-528-4163 Mil PPR Flt adv DND 780-973-4108 (emerg only) CSN 319-528-4108	
<b>PF</b>	A-1,2 ltd hrs C-3 D-4,5,6	
<b>FLT PLN</b>	NOTAM FILE CYED ctc 408 Sqn OPS 780-973-4163 min 48 hr notice for PPR Edmonton 780-890-8386 or Edmonton 866-WXBRIEF (Toll free within Canada) or 866-541-4102 (Toll free within Canada & USA)	
<b>ACC</b>	Edmonton IFR 888-358-7526 or 780-890-8304/8305	
<b>MIL</b>	780-973-4163 CSN 319-528-4163 ltd hrs at Sqn OPS	
<b>WX</b>	WD2 780-973-4011 Ext 4972 CSN 319-528-4972 METAR 12-23Z± Mon-Fri O/T AWOS. TAF 13-01Z Mon-Fri issue times: 13Z±, 17Z± hrs may vary according to mil requirements.	
<b>SERVICES</b>		
<b>FUEL</b>	F-34	
<b>OIL</b>	NATO 9150-01-209-2684 (156)	
<b>ARFF</b>	3	
<b>JASU</b>	CE12	
<b>MIL ADV</b>	408 Sqn Ops 131.4 383.7 fm 40.9 ltd hrs	
<b>PAD DATA</b>	Elongated tkof/lgd area 45m x 150m asphalt unltld wt 2 touchdown points on ends of tkof/lgd area. 03(028°)/21(208°) 45m x 45m asphalt unltld wt	
<b>LIGHTING</b>	ARCAL-118.0 type K	
<b>COMM</b>		
<b>MF/ATF</b>	Nameq advsy 118.0 ltd hrs Mon-Fri exc hols O/T tfc 118.0 Flt Following 383.7	
<b>ARR</b>	Edmonton 119.5 226.3	
<b>DEP</b>	Edmonton 119.5 226.3	
<b>PMSV</b>	344.6 ltd hrs	
<b>NAV</b>		
<b>NDB</b>	EB 256 (L) N53 40 06 W113 27 37 at A/D Unmonitored outside oprg hrs	
<b>PRO</b>	For VFR rtes see Edmonton (Nameq) Heli VTPC or as directed by ATC. Heli is within CYR 265. Range 0.6NM E of EB NDB may be open. Avoid CYR 212 sfc to 3200 ASL. Air taxi skid-equipped only via shortest rtes or as directed by ATC. All tfc W of Hwy 28A shall remain 3000 ASL or below unless coordinated with ATC.	

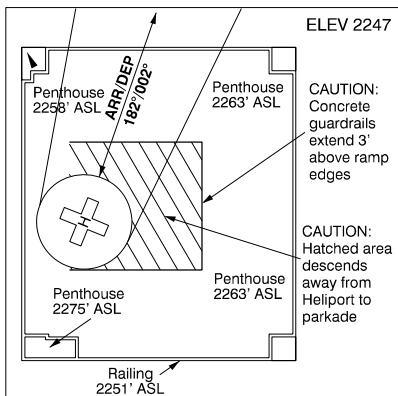
# CANADA FLIGHT SUPPLEMENT / GPH 205

Effective 0901Z 20 November 2008 to 0901Z 15 January 2009

AERODROME/FACILITY DIRECTORY B245

## EDMONTON (ROYAL ALEXANDRA HOSP) AB (Heli)

CFH7



<b>REF</b>	N53 33 29 W113 29 46 Adj 17°E UTC-7(6) Elev 2247' VTA A5015
<b>OPR</b>	Royal Alexandra Hosp 780-735-4287 Cert PPR
<b>PF</b>	B-4 C-1,2,3,5,6
<b>FLT PLN</b>	NOTAM FILE CYXD
<b>FIC</b>	Edmonton 780-890-8386 or Edmonton 866-WXBRIEF (Toll free within Canada) or 866-541-4102 (Toll free within Canada & USA)
<b>ACC</b>	Edmonton IFR 888-358-7526 or 780-890-8304/8305
<b>PAD DATA</b>	70' dia roof top 86' dia 12,000 lbs.
<b>LIGHTING</b>	RY(LO) PNR ctc opr
<b>COMM</b>	<p><b>RCO</b> Red Deer rdo 119.1 (E) (RAAS) 06-13Z± (emerg only 780-890-8386)</p> <p><b>TWR</b> City Centre 119.1 283.7 (E) 13-06Z± O/T Edmonton rdo 5NM 4600 ASL (IRREGULAR SHAPE - See VTPC) (emerg only 780-413-5501)</p> <p><b>MF</b> Red Deer rdo 119.1 (E) 06-13Z± 5NM 3400 ASL (CAR 602.98) (IRREGULAR SHAPE - See VTPC)</p> <p><b>ARR</b> Edmonton Tml 119.5 226.3 above 4600 ASL, 13-06Z±; O/T above 3400 ASL (overlying CZ area)</p> <p><b>DEP</b> Edmonton Tml 119.5 226.3 above 4600 ASL, 13-06Z±; O/T above 3400 ASL (overlying CZ area)</p>
<b>PRO</b>	Arr/dep path 182°/002° fr pad; routing via heli VTPC or as directed by ATC.
<b>CAUTION</b>	Concrete guardrails extend 3' abv ramp edges. Hatched area descends away fr Heli to parkade.

# CANADA FLIGHT SUPPLEMENT / GPH 205

Effective 0901Z 20 November 2008 to 0901Z 15 January 2009

## B246 AERODROME/FACILITY DIRECTORY

### EDMONTON / ST. ALBERT AB (Heli)

CE53

<b>REF</b>	N53 41 15 W113 41 14 3.5NW 18°E UTC-7(6) Elev 2265' VTA A5015 E-15 E-16	
<b>OPR</b>	Delta Helicopters Ltd 780-458-3564 Reg PPR	
<b>PF</b>	B-1 D-2,3,4,5,6	
<b>FLT PLN</b>	NOTAM FILE CYEG <b>FIC</b> Edmonton 780-890-8386 or Edmonton 866-WXBRIEF (Toll free within Canada) or 866-541-4102 (Toll free within Canada & USA) <b>ACC</b> Edmonton IFR 888-358-7526 or 780-890-8304/8305	
<b>SERVICES</b> <b>S</b> <b>PVT ADV</b>	Opr 1,2,3,4,5,6 123.2	
<b>PAD DATA</b>	85' dia concrete/asphalt 100' dia turf. Max length 59'	
<b>COMM</b>	<b>ATF</b> tfc 123.2 2NM 3400 ASL	
<b>PRO</b>	For VFR routes see Edmonton VTPC or as directed by ATC.	
<b>CAUTION</b>	Ultra-light activity within 5NM of heli.	

### EDMONTON / TWIN ISLAND AIRPARK AB

CEE6

<b>REF</b>	N53 28 16 W113 09 16 12SE 17°E UTC-7(6) Elev 2435' VTA A5015 E-15 E-16	
<b>OPR</b>	Twin Island Resident's Association 780-922-2596 Reg PPR	
<b>PF</b>	B-1 C-2,3,4,5,6	
<b>FLT PLN</b>	NOTAM FILE CYEG <b>FIC</b> Edmonton 780-890-8386 or Edmonton 866-WXBRIEF (Toll free within Canada) or 866-541-4102 (Toll free within Canada & USA) <b>ACC</b> Edmonton IFR 888-358-7526 or 780-890-8304/8305	
<b>RWY DATA</b> <b>RCR</b>	Rwy 06(060°)/24(240°) 2900x100 turf Opr Ltd maint	
<b>LIGHTING</b>	06-(TE LO), 24-(TE LO) May 1-Oct 31	
<b>COMM</b>	<b>ATF</b> tfc 123.2 5NM 3400 ASL	
<b>PRO</b>	Rgt hand circuits rwy 24 (CAR 602.96). For VFR routes see Edmonton VTPC or as directed by ATC.	



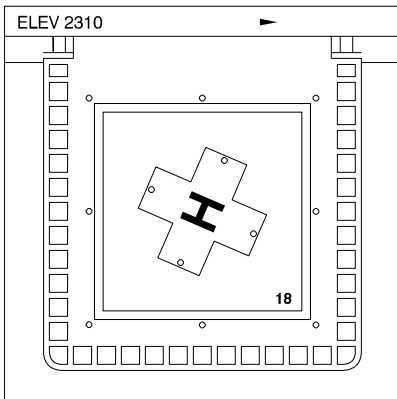
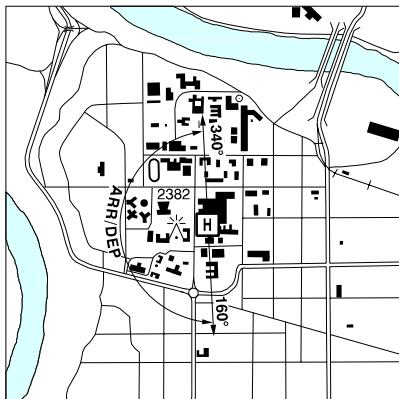
# CANADA FLIGHT SUPPLEMENT / GPH 205

Effective 0901Z 20 November 2008 to 0901Z 15 January 2009

AERODROME/FACILITY DIRECTORY B247

## EDMONTON (UNIVERSITY OF ALBERTA HOSP) AB (Heli)

CEW7



<b>REF</b>	N53 31 14 W113 31 29 Adj 17°E UTC-7(6) Elev 2310' VTA A5015
<b>OPR</b>	Hosp 780-407-8657 Cert PPR
<b>PF</b>	B-1,2,3,4 C-5,6
<b>FLT PLN</b>	NOTAM FILE CYXD
<b>FIC</b>	Edmonton 780-890-8386 or Edmonton 866-WXBRIEF (Toll free within Canada) or 866-541-4102 (Toll free within Canada & USA)
<b>ACC</b>	Edmonton IFR 888-358-7526 or 780-890-8304/8305
<b>PAD DATA</b>	60' x 65' 72' x 82' roof top 18,000 lbs.
<b>RCR</b>	Opr
<b>LIGHTING</b>	RY(LO) PNR ctc opr
<b>COMM</b>	<p><b>RCO</b> Red Deer rdo 119.1 (E) (RAAS) 06-13Z± (emerg only 780-890-8386)</p> <p><b>TWR</b> City Centre 119.1 283.7 (E) 13-06Z± O/T Edmonton rdo 5NM 4600 ASL (IRREGULAR SHAPE - See VTPC) (emerg only 780-413-5501)</p> <p><b>MF</b> Red Deer rdo 119.1 (E) 06-13Z± 5NM 3400 ASL (CAR 602.98) (IRREGULAR SHAPE - See VTPC)</p> <p><b>ARR</b> Edmonton Tml 119.5 226.3 above 4600 ASL, 13-06Z±; O/T above 3400 ASL (overlying CZ area)</p> <p><b>DEP</b> Edmonton Tml 119.5 226.3 above 4600 ASL, 13-06Z±; O/T above 3400 ASL (overlying CZ area)</p>
<b>NAV</b>	<p><b>NDB</b> BLATCHFORD ZXD 201 (L) N53 29 58 W113 30 46 323° 1.3NM to A/D</p>
<b>PRO</b>	Arr/dep 160°-340° fr heli.
<b>CAUTION</b>	Numerous bldgs to 2515' ASL E of helipad.

# CANADA FLIGHT SUPPLEMENT / GPH 205

Effective 0901Z 20 November 2008 to 0901Z 15 January 2009

B248 AERODROME/FACILITY DIRECTORY

## EDMONTON / VILLENEUVE AB

CZVL

<b>REF</b>	N53 40 03 W113 51 16 1W 18°E UTC-7(6) Elev 2255' VTA A5015 E-15 E-16 LO1 LO2 T1 RCAP	
<b>OPR</b>	Edmonton Airports 780-890-8900/8327 Cert	
<b>PF</b>	A-1 avbl 1430-23Z‡ D-2,3,4,5,6	
<b>FLT PLN</b>	NOTAM FILE CZVL <b>FIC</b> Edmonton 780-890-8386 or Edmonton 866-WXBRIEF (Toll free within Canada) or 866-541-4102 (Toll free within Canada & USA) <b>ACC</b> Edmonton IFR 888-358-7526 or 780-890-8304/8305 <b>PIK</b> ATB, airside access	
<b>SERVICES</b>	Cardinal Aviation 780-459-0952/780-446-5949	
<b>FUEL</b>	100LL, JB(FSII)	
<b>OIL</b>	All	
<b>S</b>	1,2,3,4,5	
<b>RWY DATA</b>	Rwy 08(079°)/26(259°) 3500x100 asphalt Rwy 08 up 0.40% Rwy 16(159°)/34(339°) 3500x100 asphalt <b>RCR</b> Opr Ltd hrs PLR/PCN. Aprt ltd to acft up to 12,500 lbs gross tkof wt.	
<b>LIGHTING</b>	08-(TE ME), 16-(TE ME), 26-(TE ME), 34-(TE ME) ARCAL-120.0 type K	
<b>COMM</b>	<b>ATIS</b> 128.35 15-04Z‡ <b>GND</b> Villeneuve 120.8 15-04Z‡ <b>TWR</b> Villeneuve 120.0 (V) 15-04Z‡ (emerg only 780-458-5828) <b>ATF</b> tfc 120.0 04-15Z‡ 3NM to below 4600 ASL	
<b>PRO</b>	Rgt hand circuits rwy 16 & 26 (CAR 602.96). For VFR routes see Edmonton VTPC or as directed by ATC.	
<b>CAUTION</b>	Deer in vic of rwys. Aerobatics may be in progress over aprt 5800' ASL & below. Rising terrain immediately S of thld rwy 34.	

## EDMONTON / VILLENEUVE (ROSE FIELD) AB

CRF3

<b>REF</b>	N53 38 44 W113 48 10 2SE 18°E UTC-7(6) Elev 2190' VTA A5015	
<b>OPR</b>	Simon A. Rose 780-460-0400/ 780-991-5789 Reg PPR	
<b>FLT PLN</b>	NOTAM FILE CZVL <b>FIC</b> Edmonton 866-WXBRIEF (Toll free within Canada) or 866-541-4102 (Toll free within Canada & USA) <b>ACC</b> Edmonton IFR 888-358-7526 or 780-890-8304/8305	
<b>RWY DATA</b>	Rwy 07(072°)/25(252°) 2400X60 turf Rwy 16(162°)/34(342°) 1400X50 turf <b>RCR</b> Opr No wint maint Conditions subject to seasonal and/or climatic variations. Soft in spring.	
<b>COMM</b>	<b>MF</b> Villeneuve Tower 120.0 (V) 15-04Z‡ (emerg only 780-458-5828) <b>ATF</b> tfc 120.0 04-15Z‡ 3NM centred on Villeneuve A/D 2 NM WNW to below 4600 ASL	

# CANADA FLIGHT SUPPLEMENT / GPH 205

Effective 0901Z 20 November 2008 to 0901Z 15 January 2009

AERODROME/FACILITY DIRECTORY B249

## EDMONTON / VILLENEUVE (ROSE FIELD) AB (Cont'd)

CRF3

<b>PRO</b>	Ctc Villeneuve Twr 120.00 5 miles and prior to tkof No tng flts or apchs.
<b>CAUTION</b>	Watch for tfc on hwy 44 when landing rwy 07 and dep rwy 25. note: Airport close to Edmonton/Villeneuve CZVL with similar rwy designations.

## EDMUNDSTON NB

CYES

<b>REF</b>	N47 29 26 W68 28 55 9NW 19°W UTC-4(3) Elev 490' A5002 F-21 F-22	
<b>OPR</b>	Aéroport Madawaska Airport Inc 506-737-3540 Reg	
<b>PF</b>	A-1 C-2 D-3,4,5,6	
<b>CUST</b>	AOE/15 888-226-7277	
<b>FLT PLN</b>	NOTAM FILE CYCL	
<b>FIC</b>	(bil) Québec 866-WXBRIEF or (French) 866-GOMÉTÉO (Toll free within Canada) or 866-541-4105 (Toll free within Canada & USA)	
<b>ACC</b>	Moncton 506-867-7176 or  866-480-8200. Flt Plns by Fax 506-867-7180 & include phone numbers where pilot can be reached prior to dep	
<b>RWY DATA</b>	Rwy 16/34 4499x75 asphalt	
<b>RCR</b>	Opr No win maint PNR	
<b>COMM</b>	UNICOM ltd hrs O/T tfc 122.8 5NM 3500 ASL	
<b>PRO</b>	Rgt hand circuits rwy 34 (CAR 602.96). Acft that cancel IFR in USA airspace and are unable to file a VFR Flt Pln, must cancel the SAR portion of their IFR Flt Pln for CYES with CZUL ACC at 514-633-3023.	
<b>CAUTION</b>	Only pilots familiar with the lcl area should use this apt dur hrs of darkness due to surrounding high terrain. Deer in vicinity of rwy.	

## EDMUNDSTON (REGIONAL HOSP) NB (Heli)

CCY5

<b>REF</b>	N47 22 35 W68 18 43 Adj 19°W UTC-4(3) Elev 682' A5002 F-21 F-22	
<b>OPR</b>	Edmundston Regional Hosp 506-739-2447/2778 Cert PPR	
<b>FLT PLN</b>	NOTAM FILE CYCL	
<b>FIC</b>	(bil) Québec 866-WXBRIEF or (French) 866-GOMÉTÉO (Toll free within Canada) or 866-541-4105 (Toll free within Canada & USA)	
<b>ACC</b>	Moncton 506-867-7176 or 866-480-8200 Flt Plns by Fax 506-867-7180 & include phone numbers where pilot can be reached prior to dep	
<b>PAD DATA</b>	66' x 66' concrete (Restricted to 44' max heli overall length)	
<b>RCR</b>	Opr Ltd win maint PNR	

# CANADA FLIGHT SUPPLEMENT / GPH 205

Effective 0901Z 20 November 2008 to 0901Z 15 January 2009

B250 AERODROME/FACILITY DIRECTORY

## EDMUNDSTON (REGIONAL HOSP) NB (Heli) (Cont'd)

CCY5

<b>COMM</b>	
<b>ATF</b>	tfc 123.2 5NM 3700 ASL
<b>PRO</b>	Arr/dep 224° fr heli.

## EDRA AB

CEV2

<b>REF</b>	N57 51 W113 15 19°E UTC-7(6) Elev 2625' A5023 D-13	
<b>OPR</b>	Alberta Sustainable Resource Development, Forest Protection Division Fort McMurray 780-743-7125 Reg	
<b>FLT PLN</b>	NOTAM FILE CYMM	
<b>FIC</b>	Edmonton 866-WXBRIEF (Toll free within Canada) or 866-541-4102 (Toll free within Canada & USA)	
<b>ACC</b>	Edmonton IFR 888-358-7526 or 780-890-8304/8305	
<b>RWY DATA</b>	Rwy 12(124°)/30(304°) 3200x100 turf	
<b>RCR</b>	Opr Ltd maint. No win maint	
<b>COMM</b>		
<b>ATF</b>	tfc 123.2 5NM 5700 ASL	

## EDSON AB

CYET

<b>REF</b>	N53 34 44 W116 27 54 Adj SW 19°E UTC-7(6) Elev 3041' A5014 E-15 LO1 LO2 HI3 CAP	
<b>OPR</b>	Town 780-723-6300/4010 Cert Ldg fees	
<b>PF</b>	A-1,3 C-2,4,5,6	
<b>FLT PLN</b>	NOTAM FILE CYET	
<b>FIC</b>	Edmonton 866-WXBRIEF (Toll free within Canada) or 866-541-4102 (Toll free within Canada & USA)	
<b>ACC</b>	Edmonton IFR 888-358-7526 or 780-890-8304/8305	
<b>WX</b>	Legacy AWOS	
<b>SERVICES</b>		
<b>FUEL</b>	100LL, JA(FSII) 780-723-3134	
<b>S</b>	4,5,6	
<b>RWY DATA</b>	Rwy 07(071°)/25(251°) 6000x100 asphalt Thld 07 displ 600'. Thld 25 displ 500'.	
<b>TWY</b>	Twy C, D rstd to Alta Forestry use only.	
<b>RCR</b>	Opr	
<b>LIGHTING</b>	07-(TE ME) V1, 25-(TE ME) V1 ARCAL-123.2 type K	
<b>COMM</b>		
<b>ATF</b>	tfc 123.2 5NM 6100 ASL	
<b>NAV</b>		
<b>NDB</b>	8N 393 (L) N53 34 51 W116 27 17 at A/D Pvt	
<b>DME</b>	8N 109.4 (M) Ch 31 N53 34 50 W116 27 16 (3066') at A/D Pvt	
<b>CAUTION</b>	Water bomber activity at or in vic of A/D Apr thru Sep.	

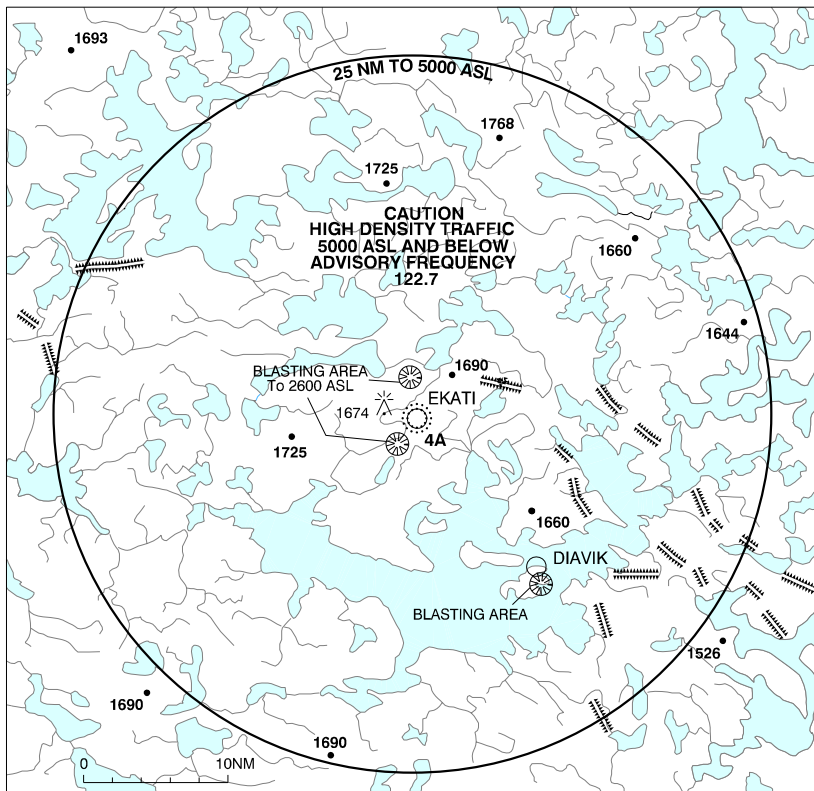
# CANADA FLIGHT SUPPLEMENT / GPH 205

Effective 0901Z 20 November 2008 to 0901Z 15 January 2009

AERODROME/FACILITY DIRECTORY B251

**EDZO NT** — See RAE / EDZO

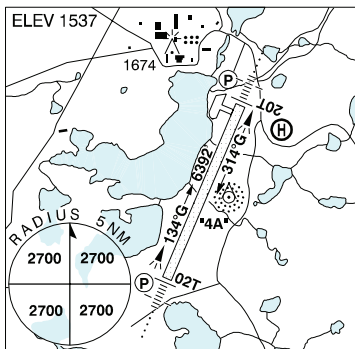
## EKATI-DIAVIK VFR TERMINAL PROCEDURES CHART



### EKATI NT

CYOA

<b>REF</b>	N64 41 56 W110 36 53 21°E GV132°E UTC-7(6) Elev 1537' A5036 C-10 LO5 HI2 RCAP
<b>OPR</b>	BHP Billiton Diamonds Ltd 867-880-2220 Reg PPR
<b>FLT PLN</b>	NOTAM FILE CYOA
<b>FIG</b>	North Bay 866-WXBRIEF (Toll free within Canada) or 866-541-4109 (Toll free within Canada & USA)
<b>ACC</b>	Edmonton IFR 888-358-7526 or 780-890-8304/8305
<b>WX</b>	TAF issue times: 14, 19Z (DT 13, 19Z)
<b>RWY DATA</b>	Rwy 02T(023°T)/20T(203°T) 6392x148 gravel
<b>RCR</b>	Opr



# CANADA FLIGHT SUPPLEMENT / GPH 205

Effective 0901Z 20 November 2008 to 0901Z 15 January 2009

B252 AERODROME/FACILITY DIRECTORY

## EKATI NT (Cont'd)

CYOA

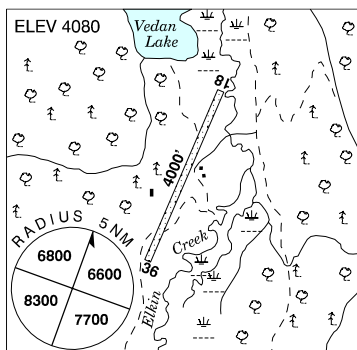
<b>LIGHTING</b>	02T-AN(TE HI) P2, 20T-AN(TE HI) P2 (non-std)
<b>COMM</b>	
<b>RCO</b>	Arctic rdo 123.275 (FISE)
<b>ATF</b>	UNICOM (AU) ltd hrs O/T tfc 122.7 25NM 5000 ASL
<b>NAV</b>	
<b>NDB</b>	KOALA 4A 350 (M) N64 41 53 W110 36 33 at A/D Pvt
<b>DME</b>	KOALA 4A 111.8 Ch 55 N64 41 53 W110 36 33 at A/D Pvt
<b>CAUTION</b>	High density tfc - see EKATI-DIAVIK VTPC. Caribou may be on or in vic rwy. Blasting areas 1NM N & 2.4NM S of A/D, sfc to 2600 ASL. Blasting and all clear announcements on EKATI unicom 122.7.

## ELDORADO ON — See THUNDER BAY / ELDORADO

## ELKIN CREEK GUEST RANCH BC

CBL9

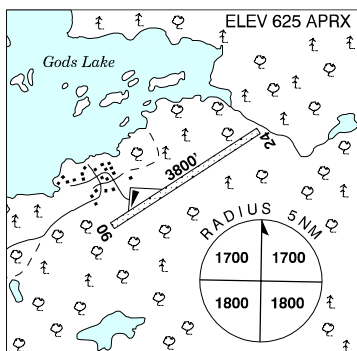
<b>REF</b>	N51 30 46 W123 48 16 20° E UTC-8(7) Elev 4080' A5004 E-15
<b>OPR</b>	Elkin Creek Guest Ranch 250-394-7054 Reg
<b>PF</b>	B-1,2,5
<b>FLT PLN</b>	NOTAM FILE CYWL
<b>FIC</b>	Kamloops 866-WXBRIEF (Toll free within Canada) or 866-541-4101 (Toll free within Canada & USA)
<b>SERVICES</b>	
<b>S</b>	4,5 (May-Oct)
<b>RWY DATA</b>	Rwy 18/36 4000x45 turf
<b>RCR</b>	Opr No win maint.
<b>COMM</b>	
<b>ATF</b>	tfc 123.2 5NM 7100 ASL
<b>CAUTION</b>	Check for animals on rwy.



## ELK ISLAND MB

CKZ3

<b>REF</b>	N54 40 17 W94 08 43 Adj SE 1°E UTC-6(5) Elev 625' aprx A5017 E-17
<b>OPR</b>	Elk Island Lodge 204-775-9070 Reg
<b>PF</b>	C-1,2,5 PNR Opr May 15-Sep 20
<b>FLT PLN</b>	NOTAM FILE CYIV
<b>FIC</b>	Winnipeg 866-WXBRIEF (Toll free within Canada) or 866-541-4103 (Toll free within Canada & USA)
<b>RWY DATA</b>	Rwy 06(056°)/24(236°) 3800x100 clay
<b>RCR</b>	Opr No win maint
<b>COMM</b>	
<b>ATF</b>	tfc 123.2 5NM 3700 ASL



# CANADA FLIGHT SUPPLEMENT / GPH 205

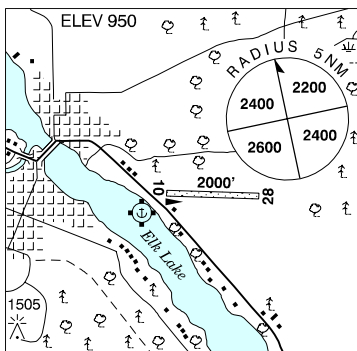
Effective 0901Z 20 November 2008 to 0901Z 15 January 2009

AERODROME/FACILITY DIRECTORY B253

## ELK LAKE ON

CPE3

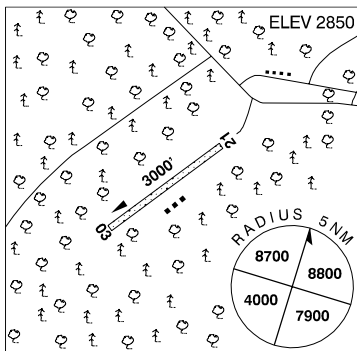
<b>REF</b>	N47 43 43 W80 18 57 Adj E 12°W UTC-5(4) Elev 950' A5001 A5009 F-21
<b>OPR</b>	J. Spapen 705-647-0039 Reg PPR
<b>PF</b>	B-1 D-2,3,5
<b>FLT PLN</b>	NOTAM FILE CYXR <b>FIC</b> London 866-WXBRIEF (Toll free within Canada) or 866-541-4104 (Toll free within Canada & USA)
<b>RWY DATA</b>	Rwy 10/28 2000x85 turf/snow
<b>RCR</b>	Opr Compaction. PNR
<b>COMM</b>	
<b>ATF</b>	tfc 123.2 5NM 4000 ASL
<b>NAV</b>	
<b>NDB</b>	EARLTON YXR 257 (M) N47 42 45 W79 47 25 285° 21.6NM to A/D



## ELKO BC

CBE2

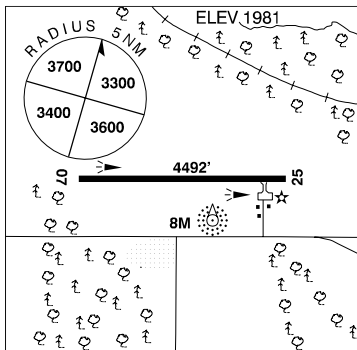
<b>REF</b>	N49 17 W115 09 1.7WSW 17°E UTC-7(6) Elev 2850' A5005 E-15
<b>OPR</b>	Bob Cutts Crowsnest Owners & Pilots Society 250-423-7136 win 250-529-7484 sum Reg
<b>PF</b>	C-1,2 D-4,5
<b>FLT PLN</b>	NOTAM FILE CYXC <b>FIC</b> Kamloops 866-WXBRIEF (Toll free within Canada) or 866-541-4101 (Toll free within Canada & USA)
<b>RWY DATA</b>	Rwy 03/21 3000x100 turf
<b>RCR</b>	Opr No win maint
<b>COMM</b>	
<b>ATF</b>	tfc 123.2 5NM 5900 ASL
<b>CAUTION</b>	Wildlife in vicinity of rwy. Soft field conds in Mar.



## ELK POINT AB

CEJ6

<b>REF</b>	N53 53 35 W110 46 20 5E 16°E UTC-7(6) Elev 1981' A5015 E-16 LO1 LO2
<b>OPR</b>	Town 780-724-3810 Reg
<b>PF</b>	A-1 C-2,3,4,5,6
<b>FLT PLN</b>	NOTAM FILE CYLL <b>FIC</b> Edmonton 866-WXBRIEF (Toll free within Canada) or 866-541-4102 (Toll free within Canada & USA)
<b>ACC</b>	Edmonton IFR 888-358-7526 or 780-890-8304/8305
<b>RWY DATA</b>	Rwy 07(074°)/25(254°) 4492x75 asphalt
<b>RCR</b>	Opr Ltd maint



# CANADA FLIGHT SUPPLEMENT / GPH 205

Effective 0901Z 20 November 2008 to 0901Z 15 January 2009

B254 AERODROME/FACILITY DIRECTORY

## ELK POINT AB (Cont'd)

CEJ6

<b>LIGHTING</b>	07-(TE ME), 25-(TE ME) ARCAL-123.2 type K
<b>COMM</b>	<b>ATF</b> tfc 123.2 5NM 5000 ASL
<b>NAV</b>	<b>NDB</b> 8M 414 (L) N53 53 25 W110 46 05 at A/D Pvt Unmonitored

## ELK POINT (HEALTHCARE CENTRE) AB (Heli)

CEP7

<b>REF</b>	N53 53 54 W110 54 29 16°E UTC-7(6) Elev 1980' A5015	
<b>OPR</b>	Elk Point Health Centre 780-724-3847 Cert PNR	
<b>PF</b>	A-1,2,4	
<b>FLT PLN</b>	NOTAM FILE CYLL	
<b>FIC</b>	Edmonton 866-WXBRIEF (Toll free within Canada) or 866-541-4102 (Toll free within Canada & USA)	
<b>PAD DATA</b>	33' dia grass 115' dia Rstd max heli length 57.4'	
<b>RCR</b>	OPR	
<b>LIGHTING</b>	RY (LO) green	
<b>COMM</b>	<b>ATF</b> tfc 123.2 5NM centred on Elk Point A/D 5NM E 5000 ASL	
<b>PRO</b>	Arr/dep btwn 148°-176° fr heli slope 16%. Single arr/dep path brg 041° fr heli slope 16%. Rstd to multi-engine heli.	
<b>CAUTION</b>	Power lines W of heli. Bldg NE of heli.	

## ELK VALLEY BC — See SPARWOOD / ELK VALLEY

## ELLIOT LAKE MUNI ON

CYEL

<b>REF</b>	N46 21 05 W82 33 41 4SE 9°W UTC-5(4) Elev 1087' A5001 F-21 LO4 CAP	
<b>OPR</b>	City 705-461-7222 (after hrs 705-848-4029/0040/5974) Reg	
<b>PF</b>	B-1,6 C-2,3,4,5	
<b>FLT PLN</b>	NOTAM FILE CYZE	
<b>FIC</b>	London 866-WXBRIEF (Toll free within Canada) or 866-541-4104 (Toll free within Canada & USA)	
<b>SERVICES</b>	1145-0015Z† Mon-Fri, 14-22Z† Sat, Sun & hol. No svc Dec 25 & Jan 1. After hrs airside emerg phone on wall of ATB can be used. Call out chg may be levied after hrs.	
<b>FUEL</b>	100LL, JA-1	
<b>OIL</b>	65, 80, 20W50	
<b>RWY DATA</b>	Rwy 12(120°)/30(300°) 4500x100 asphalt	
<b>RCR</b>	Opr	



# CANADA FLIGHT SUPPLEMENT / GPH 205

Effective 0901Z 20 November 2008 to 0901Z 15 January 2009

AERODROME/FACILITY DIRECTORY B255

## ELLIOT LAKE MUNI ON (Cont'd)

CYEL

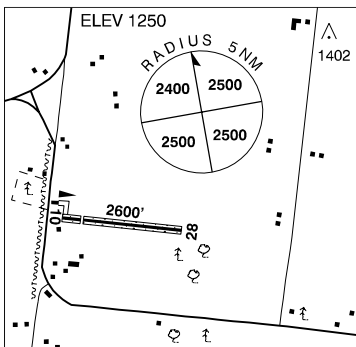
<b>LIGHTING</b>	12-AO(TE ME) P2, 30-AO(TE ME) P2 ARCAL-123.0 type K PAPI/ODALS armed for rwy anticipated in use based on fcst sfc winds.
<b>COMM</b>	
<b>ATF</b> <b>PAL</b>	UNICOM (AU) ltd hrs see opr O/T tfc 123.0 5NM 4100 ASL Toronto Ctr 135.4 260.9
<b>NAV</b>	
<b>NDB</b>	YEL 276 (M) N46 22 18 W82 37 42 123° 2.7NM to A/D
<b>PRO</b>	Rgt hand circuits rwy 12 (CAR 602.96).

## ELMHIRST'S RESORT ON — See KEENE / ELMHIRST'S RESORT

## ELMIRA ON

CNT6

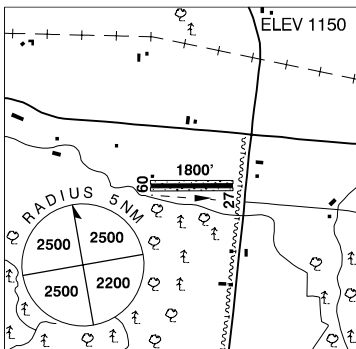
<b>REF</b>	N43 35 05 W80 36 11 2SW 10°W UTC-5(4) Elev 1250' VTA A5000 F-21
<b>OPR</b>	N. Kennedy 519-669-2849 Reg PPR
<b>PF</b>	C-1,2,3,5 D-4,6
<b>FLT PLN</b> <b>FIC</b>	NOTAM FILE CYKF London 866-WXBRIEF (Toll free within Canada) or 866-541-4104 (Toll free within Canada & USA)
<b>SERVICES</b> <b>S</b>	4,5
<b>RWY DATA</b> <b>RCR</b>	Rwy 10/28 2600x75 asphalt/turf, centre 25' asphalt. Thld 10 displ 400'. Opr No win maint. Rwy sfc rough.
<b>COMM</b> <b>ATF</b>	tfc 123.2 5NM 4300 ASL
<b>CAUTION</b>	Extv glider activity vic A/D. Simultaneous rgt & left hand circuits by gliders & tow planes Apr-Dec (CAR 602.96). P-line aprx 35 AGL 350' fr thld 10 (poles red/white striped and orange balls on wires).



## ELMIRA (EAST) ON

CPG4

<b>REF</b>	N43 35 31 W80 30 44 10°W UTC-5(4) Elev 1150' VTA A5000 F-21
<b>OPR</b>	D. Hoffer 519-669-3927 Reg PPR
<b>PF</b>	C-1,2,3,4,5,6
<b>FLT PLN</b> <b>FIC</b>	NOTAM FILE CYKF London 866-WXBRIEF (Toll free within Canada) or 866-541-4104 (Toll free within Canada & USA)
<b>SERVICES</b> <b>S</b>	5
<b>RWY DATA</b> <b>RCR</b>	Rwy 09/27 1800x90 asphalt/turf, centre 40' asphalt. Opr No win maint



# CANADA FLIGHT SUPPLEMENT / GPH 205

Effective 0901Z 20 November 2008 to 0901Z 15 January 2009

B256 AERODROME/FACILITY DIRECTORY

## ELMIRA (EAST) ON (Cont'd)

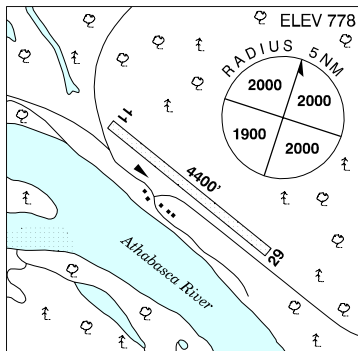
CPG4

<b>COMM</b>	
<b>ATF</b>	tfc 123.2 5NM 4200 ASL
<b>CAUTION</b>	P-line aprx 20 AGL 50' fr thld 27 (orange markers). Gnd drops off 5' at thld 27. Trees on apch to rwy 27. Cultivated field S and bldg N of rwy 09/27 within 100' of rwy centreline.

## EMBARRAS AB

CFN4

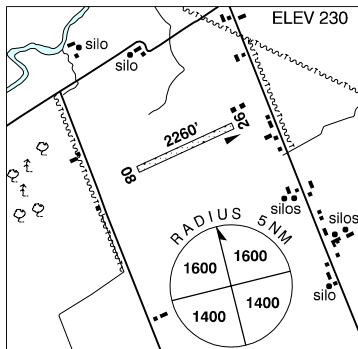
<b>REF</b>	N58 12 W111 23 34S 18°E UTC-7(6) Elev 778' A5023 D-13
<b>OPR</b>	Alberta Sustainable Resource Development, Forest Protection Division Fort McMurray 780-743-7125 Reg
<b>FLT PLN</b>	NOTAM FILE CYPY
<b>FIC</b>	Edmonton 866-WXBRIEF (Toll free within Canada) or 866-541-4102 (Toll free within Canada & USA)
<b>RWY DATA</b>	Rwy 11(111°)/29(291°) 4400x200 turf
<b>RCR</b>	Opr Ltd maint. No win maint
<b>COMM</b>	
<b>ATF</b>	tfc 123.2 5NM 3800 ASL



## EMBRUN ON

CPR2

<b>REF</b>	N45 14 28 W75 17 55 2SW 14°W UTC-5(4) Elev 230' A5000 A5002 F-21
<b>OPR</b>	Eastern Ontario Aircraft Inc./ E. Bérubé 613-443-1748 Reg Ltd hrs
<b>PF</b>	B-1 C-2,3,4,5,6
<b>FLT PLN</b>	(bil) NOTAM FILE CYND
<b>FIC</b>	Québec 866-WXBRIEF or (French) 866-GOMÉTÉO (Toll free within Canada) or 866-541-4105 (Toll free within Canada & USA)
<b>RWY DATA</b>	Rwy 08/26 2260x50 turf
<b>RCR</b>	Opr Ltd win maint
<b>COMM</b>	
<b>ATF</b>	Embrun tfc 123.2 5NM 3200 ASL excl the airspace that lies within Ottawa TCA class D airspace.
<b>CAUTION</b>	Three twrs: 547 ASL aprx 2.5NNW, 560 ASL aprx 1.5NNW & 580 ASL aprx 5NNW of aprt. P-line 35', aprx 700' fr thld rwy 26. Hang glider activity 1.5NM radius of N45 19 W75 17, 5.5NM NNE, 2,500 ASL, daylight wknds & hols activated by NOTAM. Winch launch gliders, cable & drag chute to 1500 AGL. Glider activity N of aprt to 2NM, daylight wknds & hols, activated by NOTAM. P-line 30', aprx 600' fr thld rwy 08.



# CANADA FLIGHT SUPPLEMENT / GPH 205

Effective 0901Z 20 November 2008 to 0901Z 15 January 2009

AERODROME/FACILITY DIRECTORY B257

## EMPRESS AB

CYEA

<b>REF</b>	N50 56 00 W110 00 47 2S 15°E UTC-7(6) Elev 2211' A5006 E-16 LO2 HI3 HI4 CAP	
<b>OPR</b>	Village 403-565-3938 Reg	
<b>PF</b>	A-1 C-2,4,5,6	
<b>FLT PLN</b>	NOTAM FILE CYEA Edmonton 866-WXBRIEF (Toll free within Canada) or 866-541-4102 (Toll free within Canada & USA) <b>ACC</b> Edmonton IFR 888-358-7526 or 780-890-8304/8305	
<b>RWY DATA</b>	Rwy 11(111°)/29(291°) 2953x75 asphalt <b>RCR</b> Opr Ltd maint	
<b>LIGHTING</b>	11-(TE ME), 29-(TE ME) ARCAL-123.2 type K	
<b>COMM</b>	<b>ATF</b> tfc 123.2 5NM 5300 ASL	
<b>NAV</b>	<b>VORTAC</b> YEA 115.9 Ch 106 N50 55 35 W109 59 21 (2436') 277° 1NM to A/D	

**EMPRESS / McNEILL CONOCO PHILLIPS AB** — See EMPRESS / McNEILL DUKE ENERGY

Sep 09

## EMPRESS / McNEILL DUKE ENERGY AB

CFL2

<b>REF</b>	N50 40 57 W110 02 31 15°E UTC-7(6) Elev 2395' A5006 E-16	
<b>OPR</b>	Duke Energy Gas Transmission, Empress Straddle Plant 403-838-8338/8325 Reg PPR	
<b>PF</b>	D-1,2,4,5,6	
<b>FLT PLN</b>	NOTAM FILE CYXH Edmonton 866-WXBRIEF (Toll free within Canada) or 866-541-4102 (Toll free within Canada & USA) <b>ACC</b> Edmonton IFR 888-358-7526 or 780-890-8304/8305	
<b>RWY DATA</b>	Rwy 02(023°)/20(203°) 3500x75 asphalt <b>RCR</b> Plant 403-838-8338	
<b>COMM</b>	<b>ATF</b> UNICOM ltd hrs O/T tfc 122.9 5NM 5400 ASL	

# CANADA FLIGHT SUPPLEMENT / GPH 205

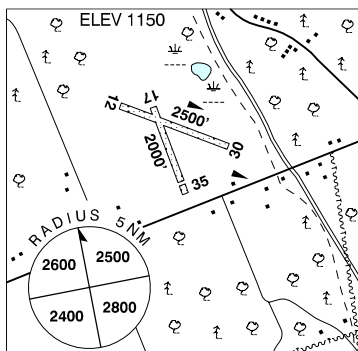
Effective 0901Z 20 November 2008 to 0901Z 15 January 2009

B258 AERODROME/FACILITY DIRECTORY

## EMSDALE ON

CNA4

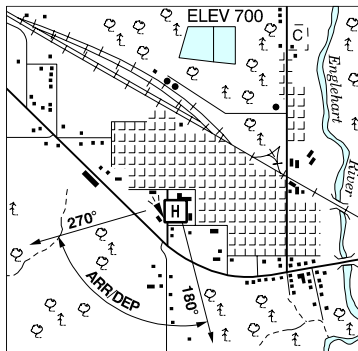
<b>REF</b>	N45 33 W79 21 1.3NW 11°W UTC-5(4) Elev 1150' A5000 F-21
<b>OPR</b>	Emsdale Apt Authority Inc 705-636-7260 ltd hrs Reg
<b>PF</b>	C-1,2,4,5 D-3,6
<b>FLT PLN</b>	NOTAM FILE CYYB
<b>FIC</b>	London 866-WXBRIEF (Toll free within Canada) or 866-541-4104 (Toll free within Canada & USA)
<b>RWY DATA</b>	Rwy 12/30 2500x100 turf Rwy 17/35 2000x100 clay/turf Thld 35 displ 200'
<b>RCR</b>	Opr No win maint. May be soft when wet.
<b>COMM</b>	
<b>ATF</b>	tfc 123.2 5NM 4200 ASL



## ENGLEHART (DISTRICT HOSP) ON (Heli)

CNS3

<b>REF</b>	N47 49 21 W79 52 42 Adj SW 12°W UTC-5(4) Elev 700' A5001 A5009
<b>OPR</b>	Englehart and District Hosp 705-544-2301 Reg PPR
<b>FLT PLN</b>	NOTAM FILE CYXR
<b>FIC</b>	London 866-WXBRIEF (Toll free within Canada) or 866-541-4104 (Toll free within Canada & USA)
<b>PAD DATA</b>	86' x 86' 114' x 114' max heli length 57.4'
<b>LIGHTING</b>	RY(LO) RF(FL)
<b>COMM</b>	
<b>A/G</b>	ambulance dispatch 129.275
<b>PRO</b>	Arr/dep btwn 180°-270° fr heli.



**ENTRANCE AB** — See HINTON / ENTRANCE

# CANADA FLIGHT SUPPLEMENT / GPH 205

Effective 0901Z 20 November 2008 to 0901Z 15 January 2009

AERODROME/FACILITY DIRECTORY B259

## ERICKSON MUNI MB

CKQ6

<b>REF</b>	N50 29 58 W99 53 52 Adj E 7°E UTC-6(5) Elev 2114' A5007 E-16 E-17 LO4	
<b>OPR</b>	Erickson Flying Club 204-636-2525 Reg	
<b>PF</b>	B-1 C-2,3,4,5	
<b>FLT PLN</b> <b>FIC</b>	NOTAM FILE CYBR Winnipeg 866-WXBRIEF (Toll free within Canada) or 866-541-4103 (Toll free within Canada & USA)	
<b>SERVICES</b> <b>FUEL</b> <b>OIL</b> <b>S</b>	For svcg 204-636-2539/7803 100LL All 4,5	
<b>RWY DATA</b> <b>RCR</b>	Rwy 09(090°)/27(270°) 3000x75 asphalt Opr PLR/PCN	
<b>LIGHTING</b>	09-(TE LO), 27-(TE LO) ARCAL-123.2 key mic 3 times in 5 sec for 15 min dur	
<b>COMM</b> <b>ATF</b>	tfc 123.2 5NM 5200 ASL	

## ESSEX ON

CNE9

<b>REF</b>	N42 05 45 W82 52 46 4SW 7°W UTC-5(4) Elev 620' A5000 F-21	
<b>OPR</b>	P. & A. Harrington 519-776-7441 Reg	
<b>PF</b>	C-1,2,3,5 D-4,6	
<b>FLT PLN</b> <b>FIC</b>	NOTAM FILE CYQG London 866-WXBRIEF (Toll free within Canada) or 866-541-4104 (Toll free within Canada & USA)	
<b>SERVICES</b> <b>S</b>	2,3,5	
<b>RWY DATA</b> <b>RCR</b> <b>TWY</b>	Rwy 09/27 1935x70 turf No win maint. Rwy may be soft when wet. Twy at hg entrance only.	
<b>COMM</b> <b>ATF</b>	tfc 122.8 5NM 3600 ASL	
<b>PRO</b>	Pilots are requested to avoid flight below 2000 ASL when flying over the Jack Miner Bird Sanctuary (Kingsville, Ont N42 04 00 W82 45 00) & over Point Pelee National Park.	
<b>CAUTION</b>	Poles aprx 45 AGL aprx 80' fr either side of thld 09. Poles red/white stripes. Ditches at thlds 09 & 27 and along rwy sides. Windshear fr hg with N/NE/NW winds. Trees on apch to rwy 27. Bldg at edge of rwy 09/27.	

# CANADA FLIGHT SUPPLEMENT / GPH 205

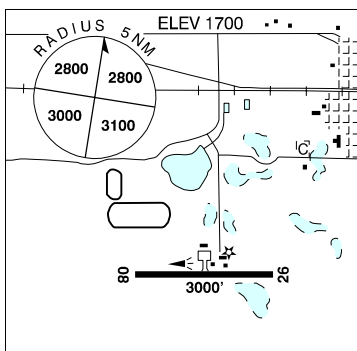
Effective 0901Z 20 November 2008 to 0901Z 15 January 2009

## B260 AERODROME/FACILITY DIRECTORY

### ESTERHAZY SK

CJK4

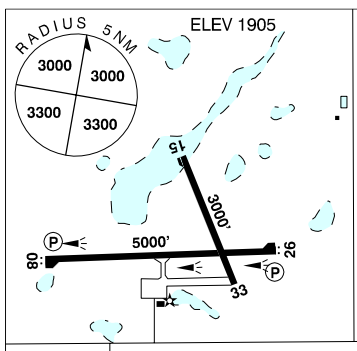
<b>REF</b>	N50 38 34 W102 06 01 1.5SW 9°E UTC-6 Elev 1700' A5006 E-16 LO2
<b>OPR</b>	Town 306-745-3942 Reg
<b>PF</b>	B-1 C-2,4,5
<b>FLT PLN</b>	NOTAM FILE CYQV
<b>FIC</b>	Edmonton 866-WXBRIEF (Toll free within Canada) or 866-541-4102 (Toll free within Canada & USA)
<b>RWY DATA</b>	Rwy 08(081°)/26(261°) 3000x75 asphalt
<b>RCR</b>	Opr Ltd win maint
<b>LIGHTING</b>	08-(TE LO), 26-(TE LO) ARCAL-122.8 type J
<b>COMM</b>	
<b>ATF</b>	tfc 122.8 5NM 4700 ASL



### ESTEVAN SK

CYEN

<b>REF</b>	N49 12 37 W102 57 57 3N 10°E UTC-6 Elev 1905' A5006 E-16 LO2 HI4 CAP
<b>OPR</b>	City 306-634-8668 Reg
<b>PF</b>	B-1 C-2,3,4,5,6
<b>FLT PLN</b>	NOTAM FILE CYQV
<b>FIC</b>	Edmonton 866-WXBRIEF (Toll free within Canada) or 866-541-4102 (Toll free within Canada & USA)
<b>WX</b>	METAR H24.
<b>SERVICES</b>	Call out chg may be levied for one or more svcs. 306-634-8668/421-3160
<b>FUEL</b>	100LL, JA-1, SP 14-23Z Mon-Fri, 19-23Z Sat & Sun
<b>OIL</b>	All
<b>S</b>	1,2,4,5,6
<b>RWY DATA</b>	Rwy 08(080°)/26(260°) 5000x100 asphalt Rwy 15(148°)/33(328°) 3000x75 asphalt
<b>RCR</b>	306-634-5558 306-421-9459
<b>LIGHTING</b>	08-AS(TE ME) P1, 15-(TE ME), 26-AS(TE ME) P1, 33-(TE ME) ARCAL-123.0 type K
<b>COMM</b>	
<b>ATF</b>	UNICOM ltd hrs O/T tfc 123.0 5NM 5000 ASL
<b>NAV</b>	
<b>NDB</b>	L7 395 (M) N49 12 35 W102 51 36 260° 4.2NM to A/D Pvt Unmonitored
<b>CAUTION</b>	CYA 317(P) within 2NM radius of A/D, extv parajump activity in area to 11,500 ASL 22Z-sunset Mon-Fri; cont daylight wknds, hols. Mar 30-Nov 30.



# CANADA FLIGHT SUPPLEMENT / GPH 205

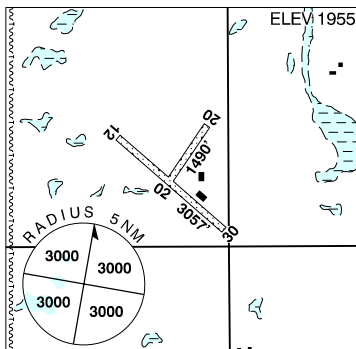
Effective 0901Z 20 November 2008 to 0901Z 15 January 2009

AERODROME/FACILITY DIRECTORY B261

## ESTEVAN (BLUE SKY) SK

CBS2

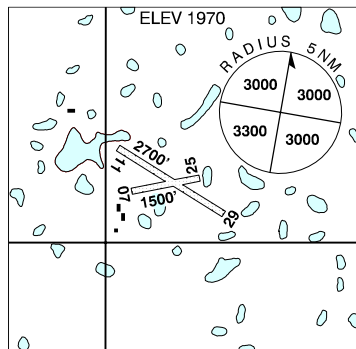
<b>REF</b>	N49 17 38 W103 01 11 6.5N 10°E UTC-6 ELEV 1955' A5006 E-16
<b>OPR</b>	Blue Sky Air 306-634-9333 Fax 306-634-9390 Reg PPR
<b>FLT PLN</b>	NOTAM FILE CYQV
<b>FIC</b>	Edmonton 866-WXBRIEF (Toll free within Canada) or 866-541-4102 (Toll free within Canada & USA)
<b>SERVICES</b>	<b>S</b> 2, 5
<b>RWY DATA</b>	Rwy 12(121°)/30(301°) 3057x70 turf Rwy 02(023°)/20(203°) 1490X60 turf
<b>RCR</b>	Opr Ltd win maint.
<b>COMM</b>	
<b>ATF</b>	UNICOM ltd hrs O/T 123.0 5NM 5000 ASL



## ESTEVAN / BRYANT SK

CKS6

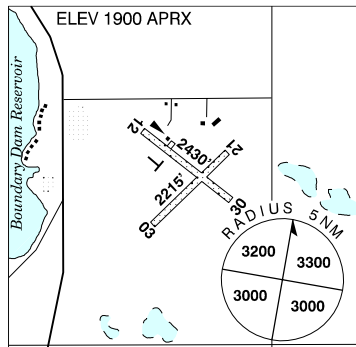
<b>REF</b>	N49 24 36 W103 08 37 16NW 10°E UTC-6 Elev 1970' A5006 E-16
<b>OPR</b>	M. Monteyne 306-634-6315/7703/7416 Reg
<b>PF</b>	B-1
<b>FLT PLN</b>	NOTAM FILE CYQV
<b>FIC</b>	Edmonton 866-WXBRIEF (Toll free within Canada) or 866-541-4102 (Toll free within Canada & USA)
<b>RWY DATA</b>	Rwy 11(112°)/29(292°) 2700x55 turf Rwy 07(069°)/25(249°) 1500x40 turf
<b>RCR</b>	Opr Ltd win maint. Rws undulating.
<b>COMM</b>	
<b>ATF</b>	tfc 123.2 5NM 5000 ASL



## ESTEVAN (SOUTH) SK

CKK4

<b>REF</b>	N49 02 20 W102 58 34 5S 10°E UTC-6 Elev 1900' aprx A5006 E-16
<b>OPR</b>	Blue Sky Air Ltd 306-634-9333 Fax 306-634-9390 Reg
<b>PF</b>	B-1 C-2,3,4,5,6
<b>FLT PLN</b>	NOTAM FILE CYQV
<b>FIC</b>	Edmonton 866-WXBRIEF (Toll free within Canada) or 866-541-4102 (Toll free within Canada & USA)
<b>RWY DATA</b>	Rwy 12(118°)/30(298°) 2430x75 turf/earth Rwy 03(036°)/21(216°) 2215x50 turf
<b>RCR</b>	Opr Ltd win maint. Rwy 12/30 ruf.
<b>COMM</b>	
<b>ATF</b>	tfc 122.8 5NM 4900 ASL



# CANADA FLIGHT SUPPLEMENT / GPH 205

Effective 0901Z 20 November 2008 to 0901Z 15 January 2009

B262 AERODROME/FACILITY DIRECTORY

## ESTON SK

CJR4

<b>REF</b>	N51 08 39 W108 45 46 Adj SW 14°E UTC-6 Elev 2225' A5006 E-16 LO2	
<b>OPR</b>	Rural Muni of Snipe Lake 306-962-3214 Reg	
<b>PF</b>	B-1 C-2,4,5	
<b>FLT PLN</b>	NOTAM FILE CYYN Edmonton 866-WXBRIEF (Toll free within Canada) or 866-541-4102 (Toll free within Canada & USA)	
<b>SERVICES</b> <b>FUEL</b> <b>OIL</b> <b>S</b>	For svcg 306-962-4737/3392 100LL All 1,4,5,6	
<b>RWY DATA</b>	Rwy 11(110°)/29(290°) 3000x75 asphalt Rwy 16(166°)/34(346°) 1950x50 asphalt/treated gravel. Rwy 15: 200x50 treated gravel, 500x50 asphalt, 1250x50 treated gravel.	
<b>RCR</b>	Opr Ltd win maint	
<b>LIGHTING</b>	11-(TE LO), 29-(TE LO) ARCAL-123.2 type J	
<b>COMM</b>		
<b>ATF</b>	tfc 123.2 5NM 5300 ASL	

## ETHEL ON

CPD2

<b>REF</b>	N43 44 42 W81 10 36 2NW 9°W UTC-5(4) Elev 1170' A5000 F-21	
<b>OPR</b>	D.J. Martin 519-887-6328 Reg PPR	
<b>PF</b>	B-1 C-2,4,5 D-3,6	
<b>FLT PLN</b>	NOTAM FILE CYGD London 866-WXBRIEF (Toll free within Canada) or 866-541-4104 (Toll free within Canada & USA)	
<b>SERVICES</b> <b>S</b>	5,6	
<b>RWY DATA</b>	Rwy 04(039°)/22(219°) 2805x80 turf/snow	
<b>RCR</b>	Opr Ltd win maint	
<b>LIGHTING</b>	04-(LO), 22-(LO) PNR Opr	
<b>COMM</b>		
<b>ATF</b>	tfc 122.8 5NM 4200 ASL	
<b>CAUTION</b>	Bldgs at thld 04. TV twr 97' on E end of house. Bush both sides N end of rwy 22. Upslope fr thld 22 to high pt rwy aprx 1800' fr thld 22, rises 29'. Upslope fr thld 04 to high pt rwy aprx 1000' fr thld 04, rises 08'. Height of trees near road aprx 75'. Farm machinery, recreational vehicles & wildlife in vic of rwy 04/22.	



# CANADA FLIGHT SUPPLEMENT / GPH 205

Effective 0901Z 20 November 2008 to 0901Z 15 January 2009

AERODROME/FACILITY DIRECTORY B263

## EUREKA NU

CYEU

<b>REF</b>	N79 59 40 W85 48 43 75°W GV11°E UTC-6(5) Elev 269' A5049 A5050 A-5 B-8 LO9 HI1 CAP	
<b>OPR</b>	Environment Canada 204-984-6376 wait for dial tone, then dial 4460. Reg PPR	
<b>PF</b>	C-1,2,3,5 PNR Opr	
<b>FLT PLN</b>	NOTAM FILE CYRB	
<b>FIG</b>	North Bay 866-WXBRIEF (Toll free within Canada) or 866-541-4109 (Toll free within Canada & USA)	
<b>ACC</b>	Edmonton IFR 888-358-7526 or 780-890-8304/8305	
<b>WX</b>	METAR 06-03Z. TAF 11-02Z, issue times: 11, 18, 00Z.	
<b>RWY DATA</b>	Rwy 10T(104°T)/28T(284°T) 4802x150 gravel	
<b>RCR</b>	Opr Ltd maint. PLR/PCN. Rwy 10T/28T rstd to acft less than 65,000 lbs from Jul 1-Aug 31	
<b>LIGHTING</b>	10T-(TE ME), 28T-(TE ME) PNR North Bay FIG	
<b>COMM</b>		
<b>ATF</b>	UNICOM ltd hrs O/T tfc 122.8 (V) 5NM 3300 ASL	
<b>NAV</b>		
<b>NDB</b>	YEU 205 (M) N79 59 27 W85 53 54 075°T 0.9NM to A/D	
<b>CAUTION</b>	Dly radiosonde balloon launches with an ascent rate of 1000 ft/min btwn the hrs of 1115-1345Z & 2315-0145Z.	

## EXETER ON — See SEXSMITH / EXETER

## EXPLOITS VALLEY (BOTWOOD) NL

CCP2

<b>REF</b>	N49 03 22 W55 26 53 6WSW 22°W UTC-31/2(21/2) Elev 365' A5011 A5012 E-19 F-22 LO8 CAP	
<b>OPR</b>	Govt of Newfoundland & Labrador 709-292-4326 or 709-256-1048 Reg	
<b>PF</b>	D-1,2,3,4,5,6	
<b>FLT PLN</b>	NOTAM FILE CYYT	
<b>FIG</b>	Halifax 866-WXBRIEF or (French) 866-GOMÉTÉO (Toll free within Canada) or 866-541-4106 (Toll free within Canada & USA)	
<b>ACC</b>	Gander 709-651-5225 or 888-751-5225. Flt plns by Fax 709-651-5205 & include phone numbers where pilot can be reached prior to dep.	
<b>RWY DATA</b>	Rwy 06(063°)/24(243°) 3930x75 asphalt Rwy 06 down 0.37%	
<b>RCR</b>	Opr Ltd win maint PNR	
<b>LIGHTING</b>	06-AS(TE ME), 24-AS(TE ME) ARCAL-122.8 type K key mic 7 times for RILS.	

# CANADA FLIGHT SUPPLEMENT / GPH 205

Effective 0901Z 20 November 2008 to 0901Z 15 January 2009

B264 AERODROME/FACILITY DIRECTORY

---

## EXPLOITS VALLEY (BOTWOOD) NL (Cont'd)

CCP2

---

<b>COMM</b>	
<b>ATF</b>	tfc 123.2 5NM 3400 ASL
<b>CAUTION</b>	Multiple cracks and heaves on the apron and rwy. Pilots should exercise caution when oprg at this A/D.

---

---