

# CANADA FLIGHT SUPPLEMENT / GPH 205

Effective 0901Z 20 November 2008 to 0901Z 15 January 2009

AERODROME/FACILITY DIRECTORY B29

## BADDECK (CROWN JEWEL) NS

CDW2

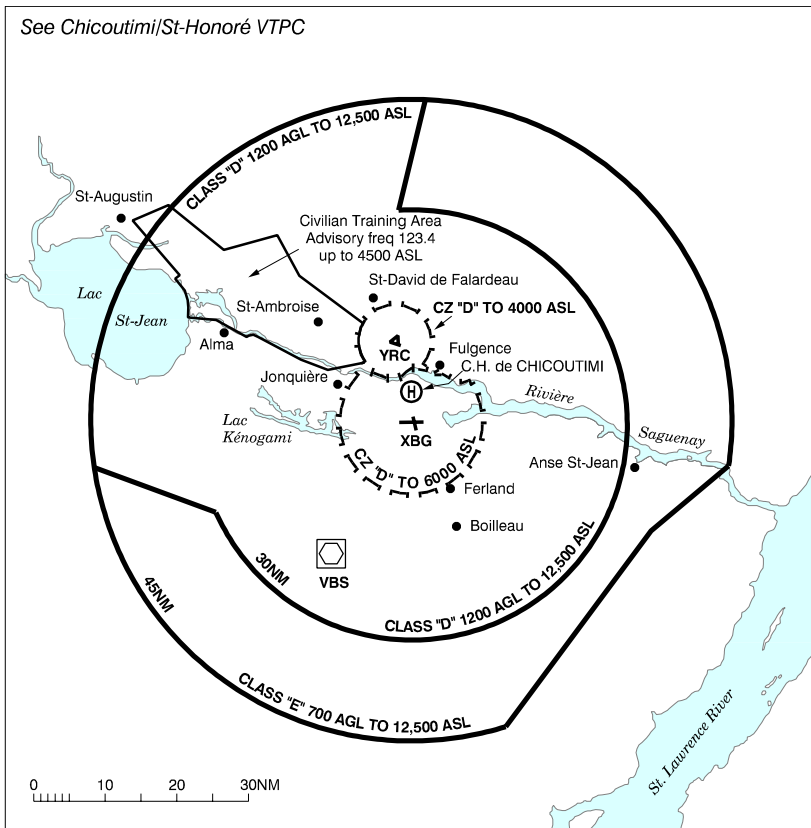
<b>REF</b>	N46 09 51 W60 47 03 3.1N 20°W UTC-4(3) Elev 291' A5003 A5012 F-22 LO8 RCAP	
<b>OPR</b>	Crown Jewel Aviation Inc 902-295-2146 Reg PPR	
<b>PF</b>	B-1,2,5 C-3,4,6	
<b>FLT PLN</b>	NOTAM FILE CYQY	
<b>FIC</b> <b>ACC</b>	Halifax 866-WXBRIEF or (French) 866-GOMÉTÉO (Toll free within Canada) or 866-541-4106 (Toll free within Canada & USA) Moncton 506-867-7176 or 866-480-8200 Flt Pln by Fax at 506-867-7176 & include phone number where pilot can be reached prior to dep.	
<b>SERVICES</b>		
<b>FUEL</b> <b>S</b>	100LL 4,5	
<b>RWY DATA</b> <b>RCR</b>	Rwy 04(036°)/22(216°) 3000x60 gravel Opr Ltd win maint, ctc opr	
<b>COMM</b> <b>ATF</b>	UNICOM ltd hrs O/T tfc 122.8 5NM 3300 ASL	
<b>PRO</b>	Rgt hand circuits rwy 04 (CAR 602.96).	
<b>CAUTION</b>	Abrupt drop off thld rwy 22, turbulence may be anticipated on apch to rwy 22 under certain wind conds, be alert for seaplane activity in Baddeck Harbour 4.5NM SSE.	

# CANADA FLIGHT SUPPLEMENT / GPH 205

Effective 0901Z 20 November 2008 to 0901Z 15 January 2009

B30 AERODROME/FACILITY DIRECTORY

## BAGOTVILLE VFR TERMINAL PROCEDURES CHART



### BAGOTVILLE CLASS D AIRSPACE

In order to improve radar tml svcs at Bagotville, all acft with permanent transponder codes wishing to fly in class D airspace must ctc Bagotville tml on freq 121.2 before penetrating class D airspace. All VFR acft wishing to penetrate Bagotville's class D airspace and who have not filed a Flt Pln with arr or dep to/fr Bagotville TCA or St-Honoré can obtain a transponder code in fit on freq 121.2 before penetrating Bagotville's class D airspace or by phone at the following number 1-888-813-8508. There is intense civ VFR tng tfc fr the western edge of St-Honoré CZ to St-Augustin. This pro is eff daily fr 0600 to 1600 lcl time.

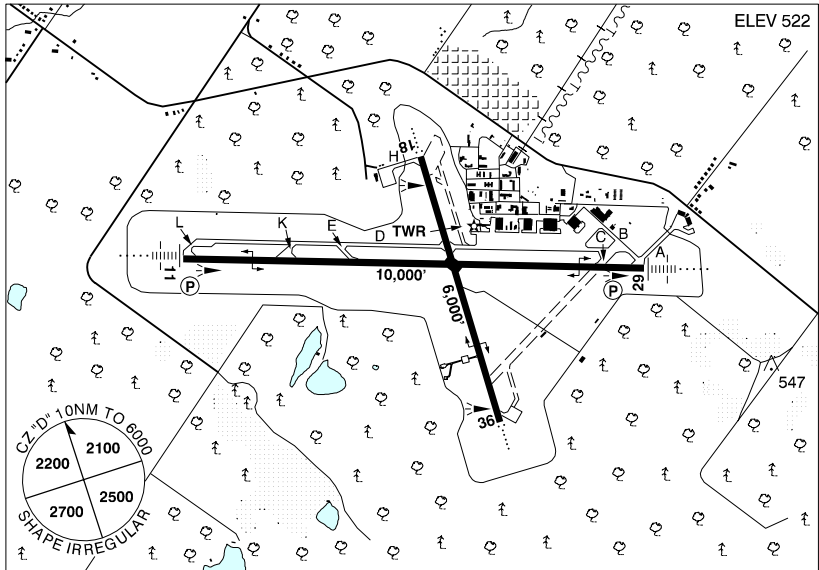
# CANADA FLIGHT SUPPLEMENT / GPH 205

Effective 0901Z 20 November 2008 to 0901Z 15 January 2009

AERODROME/FACILITY DIRECTORY B31

**BAGOTVILLE QC**

**CYBG**



<b>REF</b>	N48 19 50 W70 59 47 4.5W 18°W UTC-5(4) Elev 522' A5010 E-18 F-21 LO7 HI5 HI6 CAP
<b>OPR</b>	DND Civ: PPR 48 hrs 418-677-7342 Ldg fees Mil: NOVA msg or PNR CSN 319-661-7342 (PPR 48 hrs rqrd for wknds & hols) Mil PPR
<b>PF</b>	B-1,2 C-3,4,5,6 48 hrs PNR by tel for B-5 (Mil only)
<b>CUST</b>	Civ: AOE/15 888-226-7277, 13-21Z, Mon-Fri exc hols. Mil: AOE PNR mandatory thru 3 Wg Ops, CSN 319-661-7342/418-677-4000 Ext 7342. PNR dur opr hrs 12 to 72 hrs prior to ETA.
<b>FLT PLN</b>	(bil) NOTAM FILE CYBG
<b>MIL</b>	418-677-7342, CSN 319-661-7342, NTAS 269-5342
<b>WX</b>	WD2 not avbl for civ pilot, mil pilot ctc 22 Wg North Bay CSN 319-628-6648 or NTAS 663-6648

# CANADA FLIGHT SUPPLEMENT / GPH 205

Effective 0901Z 20 November 2008 to 0901Z 15 January 2009

B32 AERODROME/FACILITY DIRECTORY

## BAGOTVILLE QC (Cont'd)

CYBG

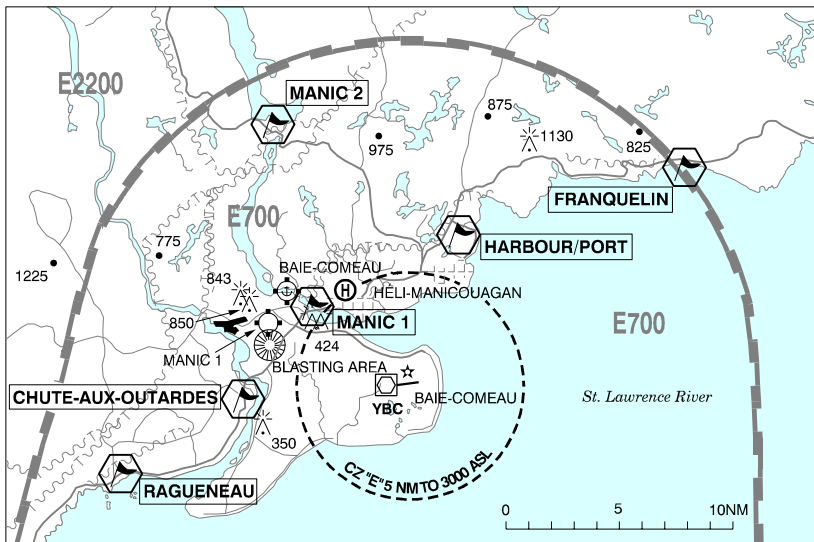
<b>SERVICES</b>	Tran svcg (mil acft only) 13-22Z‡ Mon-Fri PNR or NOVA msg rqrd, O/T incl hols essential mission only with PPR rqrd 48 hrs thru Wg Ops CSN 319-661-7342/NTAS 269-5342/418-677-7342. Tran svcg ltd to prkg, refuelling & starts. Trans aircrew rqrd to carry out own DI & supervise svcg, refuelling & pin installation. Civ acft svc avbl thru Petro-T 1230-0030Z‡ 418-677-2555/693-7116.
<b>FUEL</b>	F-34, SP, (JA, 100LL avbl thru Petro-T 418-677-2555 Page 418-693-7116)
<b>OIL</b>	123, 128, 133, 148, 156, SOAP, (15W50, W80 avbl dly at civ tml thru Petro-T 418-677-2555 Page 418-693-7116)
<b>S</b>	1 (ltd),2,3. Fleet Service avbl 48 hrs thru Wg Ops
<b>ARFF</b>	5
<b>SUP FL</b>	LHOX, LOX
<b>JASU</b>	CE1,3,13,15,16, CA2, CEA1,2
<b>MIL ADV</b>	Wg Ops 264.6 All tran mil acft call stating requirements 10 min prior to ldg
<b>RWY DATA</b>	Rwy 11(109°)/29(289°) 10000x150 concrete Rwy 18(181°)/36(001°) 6000x150 asphalt A-cable: rwy 11/29 AAE 44B-3H, B, (1500'); rwy 36 AAE 44B-3H, B, (1600') Opr Hydroplanning may occur on rwy 11/29 (mostly at intxn rwy 18/36) dur hvy or prolonged precipitation. CRFI, PLR/PCN. Rwy 11/29 PCN 49/R/B/X/T. Rwy 18/36 PCN 54/F/A/X/T.
<b>RCR</b>	
<b>LIGHTING</b>	11-AN SSALR(TE HI) P2 GPI 1000' TCH 52', 18-AO(TE HI), 29-AN SSALR(TE HI) P2 GPI 1000' TCH 55', 36-AO (TE HI)
<b>COMM</b>	(bil)
<b>ATIS</b>	124.2 (English) 125.8 (French) 302.5
<b>CLNC DEL</b>	119.0 384.5
<b>GND</b>	121.7 275.8
<b>TWR</b>	126.2 236.6 337.7 (E)
<b>TML</b>	127.2 227.6 (E)
<b>VFR ADV</b>	121.2 11-21Z‡
<b>PMSV</b>	344.6 Full svc 11-23Z‡ Mon-Fri O/T ltd svc
<b>NAV</b>	
<b>NDB</b>	YBG 356 N48 20 02 W71 08 46 109° 5.2NM to thld rwy 11
<b>TACAN</b>	XBG 111.8 Ch 55 N48 19 46 W70 59 44 (531') at A/D Unrel btwn 030°-080° & 200°-250° beyond 35NM below 6000'. Preventive maint 13-17Z‡ third Fri of each month.
<b>ILS</b>	IBG 111.5 (Rwy 29/11) RVR rwy 11 only Preventive maint each Wed 18-20Z‡ exc dur IFR & hols.
<b>PAR</b>	119.6 283.7 Preventive maint PSR/SSR 01-05Z‡ first Tue of each month. Tue holt altn Wed. Preventive maint PAR 13-15Z‡ each Tue exc dur IFR & hols.
<b>PRO</b>	Rgt hand circuits rwys 11 & 18 (CAR 602.96). Tfc ptn alts heli 1000 ASL, convl 1500 ASL, jet fighter acft 2000 ASL. In VFR cond, acfts on inst apch shall not on the overshoot exceed 1500 ASL til dep end of inst rwy. No civ tng flt permitted btwn 2230 & 0630 hrs lcl.
<b>CAUTION</b>	Extv jet fighter acft tfc in tml area. Extv gliding to 3500 ASL N of rwy 11/29 W of rwy 18/36 within 3NM wknds & hols May-Oct, dly Jul-Aug. Avoid St-Honoré CZ 4NM N (to 4000 ASL), Twr 118.4/237.4

# CANADA FLIGHT SUPPLEMENT / GPH 205

Effective 0901Z 20 November 2008 to 0901Z 15 January 2009

AERODROME/FACILITY DIRECTORY B33

## BAIE-COMEAU VFR TERMINAL PROCEDURES CHART

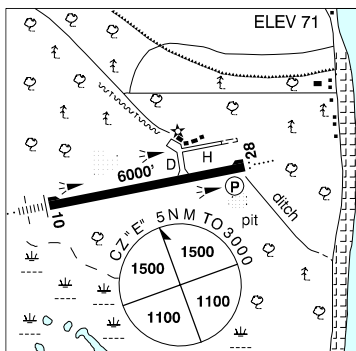


LOCATION	IDENT	LAT/LONG
CHUTE-AUX-OUTARDES	VCHUT	N49° 07.52 W68° 23.57
FRANQUELIN	VCFRN	N49° 17.58 W67° 53.98
HARBOUR/PORT	VCHBR	N49° 13.98 W68° 07.88
MANIC 1	VCMNC	N49° 11.47 W68° 19.77
MANIC 2	VCMNK	N49° 19.23 W68° 20.87
RAGUENEAU	VCRAG	N49° 04.20 W68° 32.05

## BAIE-COMEAU QC

CYBC

<b>REF</b>	N49 07 57 W68 12 16 5SSW 20°W UTC-5(4) Elev 71' A5010 E-19 F-22 LO7 HI6 CAP
<b>OPR</b>	MRC Manicouagan 418-589-8285 1030-0230Z† Mon-Fri; 12-20Z† Sat; 20-04Z† Sun O/T 2 hrs PNR 418-295-8787 Tml use fees, Ldg fees Cert
<b>PF</b>	A-1,2,3,5,6 C-5 D-4
<b>FLT PLN</b>	(bil) NOTAM FILE CYYY
<b>FIG</b>	Québec 866-GOMÉTÉO or 866-WXBRIEF (Toll free within Canada) or 866-541-4105 (Toll free within Canada & USA)
<b>ACC</b>	Montréal 800-633-1353
<b>WX</b>	Legacy AWOS. WxCam RVR not avbl on METAR auto ctc FSS for reading. TAF H24, issue times: 02, 08, 14, 20Z.



# CANADA FLIGHT SUPPLEMENT / GPH 205

Effective 0901Z 20 November 2008 to 0901Z 15 January 2009

## B34 AERODROME/FACILITY DIRECTORY

### BAIE-COMEAU QC (Cont'd)

CYBC

<b>SERVICES</b>	Chg may be levied for svcs
<b>FUEL</b>	100LL, JA-1, HPR
<b>OIL</b>	All
<b>S</b>	1,2,3,4,5,6
<b>SUP FL</b>	D-ice
<b>JASU</b>	10/15
<b>PVT ADV</b>	Air Satellite/Petro T 131.95 12-24Z± O/T 1 hr PNR 418-589-8923
<b>RWY DATA</b>	Rwy 10(100°)/28(280°) 6000x150 asphalt
<b>TWY</b>	Twy H 35' wide.
<b>RCR</b>	Opr 1030-0230Z± Mon-Fri exc hols O/T 3 hrs PNR 418-295-8787 CRFI, PLR/PCN No win maint on twy H.
<b>LIGHTING</b>	10-AN(TE HI), 28-AO(TE HI) P2 ARCAL-118.3 type K
<b>COMM</b>	(bil)
<b>RCO</b>	Mont-Joli rdo 118.3 (RAAS)
<b>MF</b>	Mont-Joli rdo 118.3 5NM 3000 ASL (CAR 602.98)
<b>NAV</b>	
<b>VOT</b>	115.7
<b>VOR/DME</b>	YBC 117.7 Ch 124 N49 08 03 W68 13 20 at A/D
<b>ILS</b>	IBC 110.3 (Rwy 10-28) RVR
<b>PRO</b>	Acft prkg S of ramp.
<b>CAUTION</b>	Periodic blasting ops 6.5NM NW & 6NM N of aprt.

### BAIE-COMEAU / HÉLI-MANICOUAGAN QC (Heli)

CSN9

<b>REF</b>	N49 11 56 W68 17 07 20°W UTC-5(4) Elev 76' A5010	
<b>OPR</b>	Héli-Manicouagan Inc 418-589-9926 Cert PPR	
<b>PF</b>	B-1 C-1,2,3,4,5,6	
<b>FLT PLN</b>	(bil) NOTAM FILE CYYY Québec 866-GOMÉTÉO or 866-WXBRIEF (Toll free within Canada) or 866-541-4105 (Toll free within Canada & USA)	
<b>PAD DATA</b>	100' x 100'	
<b>COMM</b>		
<b>ATF</b>	tfc 123.2 5NM 3100 ASL outside CYBC MF (118.3)	
<b>PRO</b>	Arr/dep SE, N, NW.	

# CANADA FLIGHT SUPPLEMENT / GPH 205

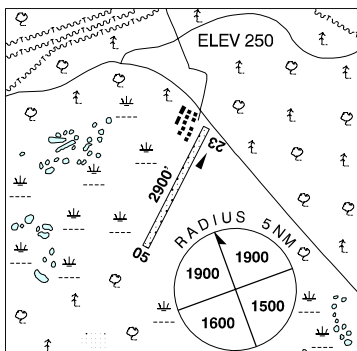
Effective 0901Z 20 November 2008 to 0901Z 15 January 2009

AERODROME/FACILITY DIRECTORY B35

## BAIE-COMEAU (MANIC 1) QC

CSL9

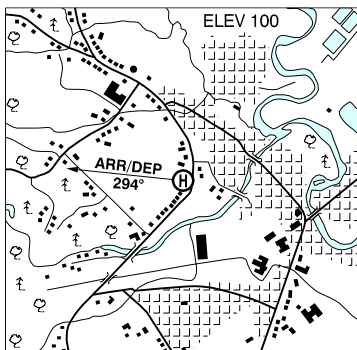
<b>REF</b>	N49 11 04 W68 21 45 2SSW 20°W UTC-5(4) Elev 250' A5010 E-19 F-22
<b>OPR</b>	Association des pilotes de Manicouagan 418-296-6180 Reg PPR
<b>PF</b>	C-1,2,3,5
<b>FLT PLN</b> <b>FIC</b>	(bil) NOTAM FILE CYYY Québec 866-GOMÉTÉO or 866-WXBRIEF (Toll free within Canada) or 866-541-4105 (Toll free within Canada & USA)
<b>RWY DATA</b> <b>RCR</b>	Rwy 05/23 2900x75 sand Opr Ltd maint
<b>COMM</b> <b>ATF</b>	tfc 123.2 5NM 3300 ASL outside CYBC MF (118.3)
<b>PRO</b>	Rgt hand circuits rwy 23 (CAR 602.96).
<b>CAUTION</b>	Ultra-light acft activity. Antenna 850 ASL 1.5NM NW. Blasting periodical 1.2NM SSW.



## BAIE-ST-PAUL QC (Heli)

CTD4

<b>REF</b>	N47 26 36 W70 30 59 Adj 18°W UTC-5(4) Elev 100' A5002
<b>OPR</b>	Compagnie Tremblay Ltée 418-435-2935 Cert
<b>PF</b>	B-1 C-2,3,4,5,6
<b>FLT PLN</b> <b>FIC</b>	(bil) NOTAM FILE CYQB Québec 866-GOMÉTÉO or 866-WXBRIEF (Toll free within Canada) or 866-541-4105 (Toll free within Canada & USA)
<b>SERVICES</b> <b>S</b>	1,4,6
<b>PAD DATA</b>	64' x 64' grass
<b>COMM</b> <b>ATF</b>	tfc 123.2 5NM 3100 ASL
<b>PRO</b>	Rstd to arr/dep path brg 294° from heli only (CAR 602.96).



# CANADA FLIGHT SUPPLEMENT / GPH 205

Effective 0901Z 20 November 2008 to 0901Z 15 January 2009

B36 AERODROME/FACILITY DIRECTORY

## BAKER LAKE NU

CYBK

<b>REF</b>	N64 17 56 W96 04 40 3SW 2°W GV94°E UTC-6(5) Elev 59' A5031 A5037 C-11 LO5 HI1 HI2 CAP	
<b>OPR</b>	Govt of Nunavut 867-645-8200 Cert	
<b>PF</b>	A-1 C-2,3,4,5	
<b>FLT PLN</b>	NOTAM FILE CYBK & CZNB <b>FIC</b> North Bay 866-WXBRIEF (Toll free within Canada) or 866-541-4109 (Toll free within Canada & USA) <b>CARS</b> 867-793-2931 <b>WX</b> METAR H24 TAF H24, issue times: 00, 06, 12, 18Z.	
<b>SERVICES</b>	Call out chg may be levied for one or more svcs <b>FUEL</b> 100LL(D), JB(D), JA thru CARS or 867-793-2234/2928. Visa & Mastercard accepted <b>S</b> 6	
<b>RWY DATA</b>	Rwy 16T(162°T)/34T(342°T) 4200x100 gravel Rwy 34T up 1.17%	
<b>RCR</b>	867-793-2931 A/D maint avbl 14-23Z± Mon-Fri. O/T 2 hrs PNR thru CARS, call out chg. CRFI PLR/PCN.	
<b>LIGHTING</b>	16T-AS(TE ME) V1, 34T-AS(TE ME) V1 (See CAUTION)	
<b>COMM</b>	<b>RCO</b> Arctic rdo 126.7 (FISE) 5680 <b>MF</b> aprt rdo 122.1 5NM 3100 ASL (CAR 602.98) <b>APRT RDO</b> 122.1 (V)	
<b>NAV</b>	<b>NDB</b> BK 224 (M) N64 18 53 W96 03 53 200°T 1NM to A/D <b>VOR/DME</b> YBK 114.5 Ch 92 N64 19 08 W96 06 17 (366') 150°T 1.4 NM to A/D VOR oriented on True North	
<b>PRO</b>	Terrain rises steeply to aprx 430 ASL 1.5NM NW & aprx 400 ASL 3.5NM N of A/D. Flight below 600 ASL to remain on or E of rwy centreline for apch rwy 16T & dep rwy 34T.	
<b>CAUTION</b>	Dly radiosonde balloon launches with an ascent rate of 1000 ft/min btwn the hrs of 1115Z-1345Z & 2315Z-0145Z. Rwy edge lgt installed higher than std (aprx 27 inches high loc 5' outside rwy edge).	



# CANADA FLIGHT SUPPLEMENT / GPH 205

Effective 0901Z 20 November 2008 to 0901Z 15 January 2009

AERODROME/FACILITY DIRECTORY B37

## BALDWIN ON

CPB9

<b>REF</b>	N44 16 02 W79 20 26 0.3E 11°W UTC-5(4) Elev 750' A1900 A5000 F-21	
<b>OPR</b>	Baldwin Airport Corporation 905-884-3988 Ext 222 Reg Ltd hrs	
<b>PF</b>	B-1 C-2,3,4,5,6	
<b>FLT PLN</b>	NOTAM FILE CYKZ <b>FIC</b> London 866-WXBRIEF (Toll free within Canada) or 866-541-4104 (Toll free within Canada & USA)	
<b>SERVICES</b>	<b>S</b> 1,2,4,5	
<b>RWY DATA</b>	Rwy 01(013°)/19(193°) 2460x100 turf Thld 01 displ 430'	
<b>RCR</b>	Opr Ltd win maint. Soft when wet.	
<b>COMM</b>	<b>ATF</b> UNICOM ltd hrs O/T tfc 122.8 5NM 3800 ASL	
<b>PRO</b>	Orange flag raised mid rwy when jumps in progress. Rgt hand circuits rwy 01 (CAR 602.96).	
<b>CAUTION</b>	2 twrs lgtd aprx 3NM NE 900 ASL. P-line aprx 40 AGL aprx 500' fr thld 01. Trees W & S fr thld 01. Ditches along rwy sides. Parachuting over A/D 11,500 ASL & below, advertised by NOTAM. Many NORDO & ultra-light acft in vicinity. Rwy sfc uneven.	

## BANCROFT ON

CNW3

<b>REF</b>	N45 04 23 W77 52 50 Adj NW 12°W UTC-5(4) Elev 1085' A5000 F-21	
<b>OPR</b>	Bancroft Flying Club 613-332-1446 Reg	
<b>PF</b>	B-1 C-2,3,4,5,6	
<b>FLT PLN</b>	NOTAM FILE CYTA <b>FIC</b> London 866-WXBRIEF (Toll free within Canada) or 866-541-4104 (Toll free within Canada & USA)	
<b>SERVICES</b>	Check with opr for availability of svcs <b>FUEL</b> 100LL, JA <b>OIL</b> 20W50 <b>S</b> 2,5,6	
<b>RWY DATA</b>	Rwy 12/30 2200x40 sand/gravel	
<b>RCR</b>	Opr Ltd win maint	
<b>COMM</b>	<b>ATF</b> UNICOM ltd hrs O/T tfc 122.8 5NM 4100 ASL	
<b>PRO</b>	Dep rwy 12: Straight-out rstd to acft capable of climb of 700'/NM. Other acft follow dep route SE along river to safe alt. Restriction due to hi terrain 1500 ASL on apch rwy 12.	

# CANADA FLIGHT SUPPLEMENT / GPH 205

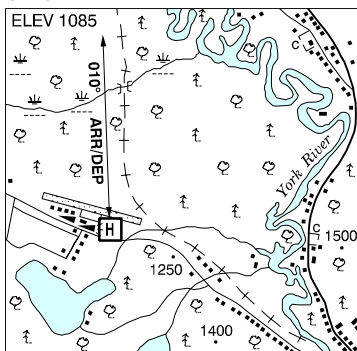
Effective 0901Z 20 November 2008 to 0901Z 15 January 2009

B38 AERODROME/FACILITY DIRECTORY

## BANCROFT (NORTH HASTINGS DISTRICT HOSP) ON (Heli)

CPB7

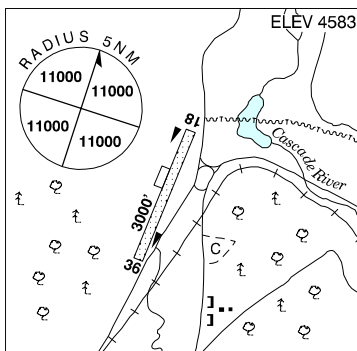
<b>REF</b>	N45 04 17 W77 52 44 Adj NW 12°W UTC-5(4) Elev 1085' A5000
<b>OPR</b>	North Hastings District Hosp 613-332-2825 Reg PPR
<b>FLT PLN</b>	NOTAM FILE CYTA
<b>FIC</b>	London 866-WXBRIEF (Toll free within Canada) or 866-541-4104 (Toll free within Canada & USA)
<b>PAD DATA</b>	86' dia 114' dia Rstd max heli length 57.5'
<b>LIGHTING</b>	RY(LO) RF(FL) ARCAL-123.45 type J
<b>COMM</b>	
<b>UNICOM</b>	122.8 Ltd hrs
<b>PRO</b>	Day arr/dep rwy 12/30, then air taxi to helipad. Ngt arr/dep 010° fr heli.



## BANFF AB

CYBA

<b>REF</b>	N51 12 W115 32 1.7NNE 18°E UTC-7(6) Elev 4583' A5005 E-15
<b>OPR</b>	Supt, Banff National Park 403-762-1470 Reg PPR
<b>PF</b>	C-2,3,4,5,6
<b>FLT PLN</b>	NOTAM FILE CYBA
<b>FIC</b>	Edmonton 866-WXBRIEF (Toll free within Canada) or 866-541-4102 (Toll free within Canada & USA)
<b>ACC</b>	Edmonton IFR 888-358-7526 or 780-890-8304/8305
<b>RWY DATA</b>	Rwy 18/36 3000x190 turf/snow
<b>RCR</b>	Opr Ltd maint



<b>COMM</b>	
<b>RCO</b>	Edmonton rdo 123.55 (FISE)
<b>ATF</b>	tfc 123.3 5NM 7600 ASL
<b>PAL</b>	Edmonton Ctr 133.75
<b>PRO</b>	Avoid flying over town of Banff, follow Trans-Canada Hwy. A/D to be used for emerg/diversions only. National Parks Act Access Regulations being enforced.
<b>CAUTION</b>	Numerous gopher holes in rwy. Elk may be on the rwy. Moderate to severe subsidence, turbulence & wind shear may be encountered. Take-off rwy 36 not recommended, tall trees & rapidly rising terrain N of aprt. Heli A/D 0.5NM S of rwy. High density heli t/c in Banff-Canmore area, see Canmore VTFC.

# CANADA FLIGHT SUPPLEMENT / GPH 205

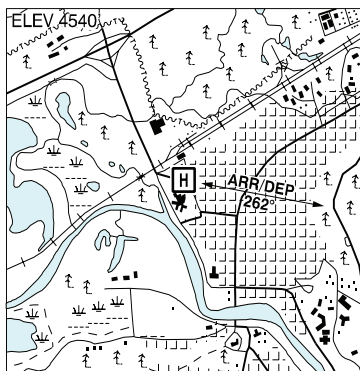
Effective 0901Z 20 November 2008 to 0901Z 15 January 2009

AERODROME/FACILITY DIRECTORY B39

## BANFF MINERAL SPRINGS (HOSP) AB (Heli)

CBM7

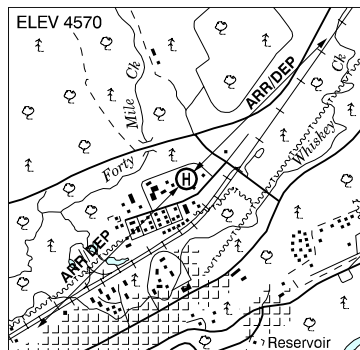
<b>REF</b>	N51 10 47 W115 34 34 Adj NW 18°E UTC-7(6) Elev 4540' A5005
<b>OPR</b>	Calgary Health Region 403-762-2222 Cert PPR
<b>FLT PLN</b>	NOTAM FILE CYBA
<b>FIC</b>	Edmonton 866-WXBRIEF (Toll free within Canada) or 866-541-4102 (Toll free within Canada & USA)
<b>ACC</b>	Edmonton IFR 888-358-7526 or 780-890-8304/8305
<b>PAD DATA</b>	65.6' dia asphalt 85.3' dia
<b>COMM</b>	<b>RCO</b> Edmonton rdo 123.55 (FISE) <b>ATF</b> 123.3 5NM 7600 ASL
<b>PRO</b>	Single arr/dep path brg 262° fr heli.



## BANFF (PARK COMPOUND HELIPORT) AB (Heli)

CBP2

<b>REF</b>	N51 11 30 W115 33 30 18°E UTC-7(6) Elev 4570' A5005 E-15
<b>OPR</b>	Banff Park Warden Service 403-762-1470 Cert PPR
<b>FLT PLN</b>	NOTAM FILE CYBA
<b>FIC</b>	Edmonton 866-WXBRIEF (Toll free within Canada) or 866-541-4102 (Toll free within Canada & USA)
<b>ACC</b>	Edmonton IFR 888-358-7526
<b>SERVICES</b>	
<b>FUEL</b>	Jet B (Alpine Helicopters)
<b>PVT ADV</b>	Banff Park Ops 403-762-1470 15-22Z†
<b>PAD DATA</b>	12' x 12' concrete 69' x 69' gravel Heli located inside National Park & requires restricted activity permit prior to landing.
<b>RCR</b>	Opr Win snow removal.
<b>COMM</b>	<b>RCO</b> Edmonton rdo 123.55 (FISE) <b>ATF</b> tfc 123.3 5NM centred on Banff apt 1.25NM NE 7600 ASL <b>PAL</b> Edmonton Ctr 133.75
<b>PRO</b>	Arr/dep use NE/SW.
<b>CAUTION</b>	High density heli tfc in Banff-Canmore area, see Canmore VTPC.



# CANADA FLIGHT SUPPLEMENT / GPH 205

Effective 0901Z 20 November 2008 to 0901Z 15 January 2009

## B40 AERODROME/FACILITY DIRECTORY

### BARKERVILLE BC

CAS3

<b>REF</b>	N53 05 17 W121 30 55 1.2N 20°E UTC-8(7) Elev 4060' A5014 E-15	
<b>OPR</b>	Min of Community, Aboriginal & Women's Svcs 250-994-3302 Reg	
<b>PF</b>	C-1,2,5	
<b>FLT PLN</b>	NOTAM FILE CYQZ	
<b>FIC</b>	Kamloops 866-WXBRIEF (Toll free within Canada) or 866-541-4101 (Toll free within Canada & USA)	
<b>RWY DATA</b>	Rwy 11/29 2700x40 asphalt Rwy 11 up 2.15%	
<b>RCR</b>	Opr avbl 1630-24Z† Mon-Fri; sum sked incl 1630-01Z† Sat & Sun Jun-Sep.	
<b>COMM</b>		
<b>ATF</b>	tfc 123.2 5NM 7100 ASL	
<b>PRO</b>		
<b>NOISE</b>	Noise abatement procedures: Avoid flying over town of Barkerville.	
<b>CAUTION</b>	Due to the hi fld elev & the rapidly rising terrain in all quads, acft performance becomes a matter of critical importance at this apt. Large mining eqpt oprg S rwy 29, verify rwy unobstructed.	

### BARRHEAD AB

CEP3

<b>REF</b>	N54 06 W114 26 1.7SW 18°E UTC-7(6) Elev 2121' A5015 E-15 E-16 LO1	
<b>OPR</b>	County of Barrhead 780-674-3331 Reg	
<b>PF</b>	B-1 C-2,3,4,5,6	
<b>FLT PLN</b>	NOTAM FILE CYEG	
<b>FIC</b>	Edmonton 866-WXBRIEF (Toll free within Canada) or 866-541-4102 (Toll free within Canada & USA)	
<b>ACC</b>	Edmonton IFR 888-358-7526 or 780-890-8304/8305	
<b>SERVICES</b>		
<b>FUEL</b>	100LL 780-674-7630/2211/6340 JB (D), supply own pump, 888-778-8765	
<b>RWY DATA</b>	Rwy 07/25 3500x100 asphalt	
<b>RCR</b>	Opr Ltd maint	
<b>LIGHTING</b>	07-(TE ME), 25-(TE ME) ARCAL-123.2 type K	
<b>COMM</b>		
<b>ATF</b>	tfc 123.2 5NM 5200 ASL	

# CANADA FLIGHT SUPPLEMENT / GPH 205

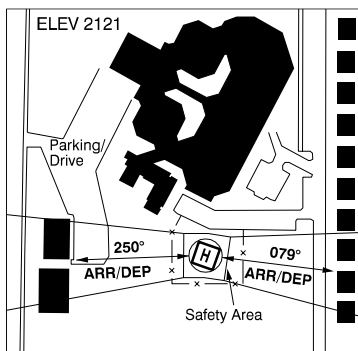
Effective 0901Z 20 November 2008 to 0901Z 15 January 2009

AERODROME/FACILITY DIRECTORY B41

## BARRHEAD (HEALTHCARE CENTRE) AB (Heli)

CHC3

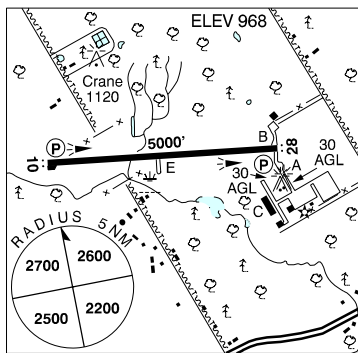
<b>REF</b>	N54 07 11 W114 24 00 Adj 18°E UTC-7(6) Elev 2121' A5015 RCAP
<b>OPR</b>	Barrhead Healthcare Centre 780-674-2221 Ext 150 Cert PPR
<b>FLT PLN</b>	NOTAM FILE CYEG
<b>FIC</b>	Edmonton 866-WXBRIEF (Toll free within Canada) or 866-541-4102 (Toll free within Canada & USA)
<b>PAD DATA</b>	64' dia concrete/grass max length 43'
<b>LIGHTING</b>	RF(FH)
<b>COMM</b>	
<b>ATF</b>	tfc 123.2 5NM 5200 ASL centred on Barrhead land A/D
<b>PRO</b>	Arr/dep paths 079°/250° fr pad. Cert for twin engine (H2) helicopters up to 43' overall length.
<b>CAUTION</b>	P-lines S of pad.



## BARRIE-ORILLIA (LAKE SIMCOE REGIONAL) ON

CNB9

<b>REF</b>	N44 29 07 W79 33 20 2.1NW 11°W UTC-5(4) Elev 968' A5000 F-21 LO6 H15 CAP
<b>OPR</b>	Lake Simcoe Regional Aprt Comsn 705-487-0999 Reg
<b>PF</b>	A-1 C-2 D-3,4,5,6
<b>CUST</b>	AOE/24 888-226-7277 excess of 15 pax 1 hr PNR 14-22Z† Mon-Fri
<b>FLT PLN</b>	NOTAM FILE CYEE
<b>FIC</b>	London 866-WXBRIEF (Toll free within Canada) or 866-541-4104 (Toll free within Canada & USA)
<b>WX</b>	AWOS (Pvt) 705-487-6231 (see COMM)
<b>SERVICES</b>	12-02Z‡ Apr-Oct, 12-00Z‡ Nov-Mar. After hrs call out chg applies.
<b>FUEL</b>	100LL, JA-1 with FSII, SP
<b>OIL</b>	15W/50, W100
<b>S</b>	1,2,3,4,5,6
<b>RWY DATA</b>	Rwy 10(099°)/28(279°) 5000x100 asphalt
<b>TWY</b>	Twy B & E rstd to 15,000 lbs or less. Twy E rstd day use only. No win maint.
<b>APRON</b>	N apron rstd to 15,000 lbs or less.
<b>RCR</b>	Opr Win maint 12-02Z‡, O/T 2 hrs PNR call out chg, PLR/PCN.
<b>LIGHTING</b>	10-AS (TE ME) P2, 28-AS (TE ME) P2 ARCAL-122.7 type K
<b>COMM</b>	
<b>ATF</b>	UNICOM ltd hrs O/T tfc 122.7 5NM 4000 ASL
<b>AWOS (Pvt)</b>	122.55
<b>NAV</b>	
<b>VOR/DME</b>	YEE 112.8 Ch 75 N44 34 54 W79 47 35 (800') 130° 11.74NM to A/D



# CANADA FLIGHT SUPPLEMENT / GPH 205

Effective 0901Z 20 November 2008 to 0901Z 15 January 2009

B42 AERODROME/FACILITY DIRECTORY

## BARRIE-ORILLIA (LAKE SIMCOE REGIONAL) ON (Cont'd)

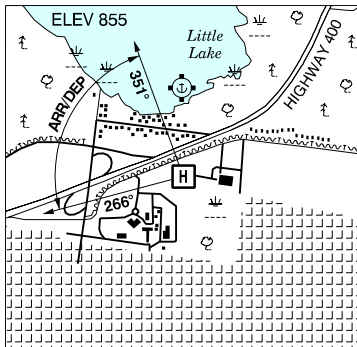
CNB9

<b>PRO</b>	Rgt hand circuits rwy 10 (CAR 602.96).
<b>CAUTION</b>	Twr 3NM NW of A/D 420 AGL 1634 ASL. Possible win maint eqpt on rwy outside ops hrs. Ocsl wildlife on rwy. Crane 2400' NNE thld 10 120 AGL 1120 ASL

## BARRIE (ROYAL VICTORIA HOSP) ON (Heli)

CRV2

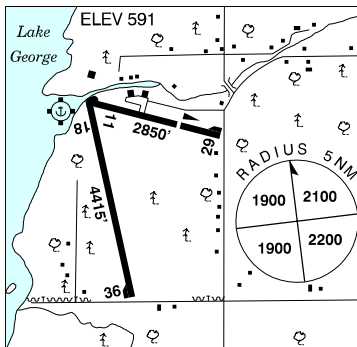
<b>REF</b>	N44 24 52 W79 39 55 Adj 11°W UTC-4(5) Elev 855' A5000
<b>OPR</b>	Royal Victoria Hosp of Barrie 705-728-9802 Cert PPR
<b>FLT PLN</b>	NOTAM FILE CYEE
<b>FIC</b>	London 866-WXBRIEF (Toll free within Canada) or 866-541-4104 (Toll free within Canada & USA)
<b>PAD DATA</b>	86' dia concrete/asphalt 114' dia (4' perimeter fencing) Rstd max heli length 57.5'
<b>RCR</b>	Opr
<b>LIGHTING</b>	RY(LO) RF(FL) DR ARCAL 123.2 type J
<b>PRO</b>	Arr/dep 266° to 351° fr heli.



## BAR RIVER ON

CPF2

<b>REF</b>	N46 25 13 W84 05 32 3SW 7°W UTC-5(4) Elev 591' A5001 F-21 LO4 CAP
<b>OPR</b>	Springer Aerospace Ltd 705-248-2158 Reg PPR
<b>PF</b>	B-1 D-2,3,4,5,6
<b>FLT PLN</b>	NOTAM FILE CYAM
<b>FIC</b>	London 866-WXBRIEF (Toll free within Canada) or 866-541-4104 (Toll free within Canada & USA)
<b>SERVICES</b>	Avbl Mon-Fri 1230-21Z‡
<b>FUEL</b>	100, JA-1
<b>OIL</b>	All
<b>RWY DATA</b>	Rwy 11(114°)/29(294°) 2850x50 asphalt Thld 29 displ 900'. Clsd Oct 15-May 15. Rwy 18(178°)/36(358°) 4415x75 asphalt.
<b>RCR</b>	Opr Ltd win maint
<b>COMM</b>	
<b>RCO</b>	London rdo (Sault Ste. Marie) 122.5 126.7 (FISE)
<b>ATF</b>	UNICOM ltd hrs O/T tfc 122.8 5NM 3600 ASL
<b>NAV</b>	
<b>VOR/DME</b>	SAULT STE. MARIE SSM 112.2 Ch 59(T) N46 24 43 W84 18 53 089° 9NM to A/D
<b>CAUTION</b>	Ditch plus road 60' fr thld 36 trees on apch to rwy 18.



# CANADA FLIGHT SUPPLEMENT / GPH 205

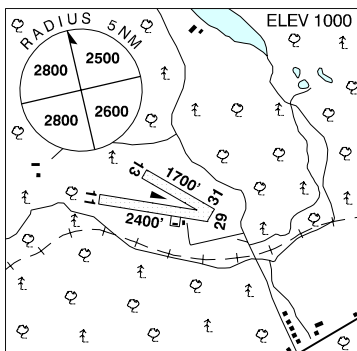
Effective 0901Z 20 November 2008 to 0901Z 15 January 2009

AERODROME/FACILITY DIRECTORY B43

## BARRY'S BAY / MADAWASKA VALLEY AIRPARK ON

CN24

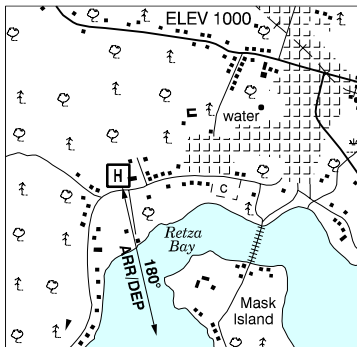
<b>REF</b>	N45 30 W77 39 3NE 13°W UTC-5(4) Elev 1000' A5000 F-21
<b>OPR</b>	Dr. A. H. Chapeskie 613-756-2045 Reg PPR
<b>PF</b>	C-1,2,4,5 D-3,6
<b>FLT PLN</b>	NOTAM FILE CYTA
<b>FIC</b>	London 866-WXBRIEF (Toll free within Canada) or 866-541-4104 (Toll free within Canada & USA)
<b>RWY DATA</b>	Rwy 11/29 2400x140 turf Rwy 13/31 1700x200 turf
<b>RCR</b>	Opr No win maint
<b>COMM</b>	
<b>ATF</b>	tfc 123.2 5NM 4000 ASL



## BARRY'S BAY (ST. FRANCIS MEM HOSP) ON (Helicopter)

CPV6

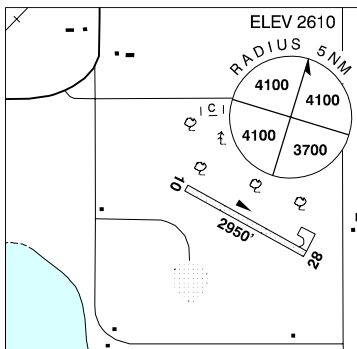
<b>REF</b>	N45 28 56 W77 41 39 Adj W 13°W UTC-5(4) Elev 1000' A5000
<b>OPR</b>	St. Francis Mem Hosp 613-756-3044 Cert PPR
<b>FLT PLN</b>	NOTAM FILE CYTA London
<b>FIC</b>	London 866-WXBRIEF (Toll free within Canada) or 866-541-4104 (Toll free within Canada & USA)
<b>PAD DATA</b>	86' dia 114' dia Cert for heli overall length to 57.3'
<b>RCR</b>	Opr
<b>LIGHTING</b>	DR RY(LO) RF(FL)
<b>PRO</b>	Arr/dep 180° fr heli.



## BASHAW AB

CFK2

<b>REF</b>	N52 33 27 W112 57 53 1.5S 17°E UTC-7(6) Elev 2610' A5015 E-15 E-16
<b>OPR</b>	Town 780-372-3911 Reg PPR
<b>PF</b>	A-1 C-2,4,5 D-3,6
<b>FLT PLN</b>	NOTAM FILE CYQF
<b>FIC</b>	Edmonton 866-WXBRIEF (Toll free within Canada) or 866-541-4102 (Toll free within Canada & USA)
<b>ACC</b>	Edmonton IFR 888-358-7526 or 780-890-8304/8305
<b>RWY DATA</b>	Rwy 10(103°)/28(283°) 2950x75 turf
<b>RCR</b>	Opr Ltd win maint
<b>COMM</b>	
<b>ATF</b>	tfc 123.2 5NM 5700 ASL
<b>CAUTION</b>	Deer in vic of apt.



# CANADA FLIGHT SUPPLEMENT / GPH 205

Effective 0901Z 20 November 2008 to 0901Z 15 January 2009

B44 AERODROME/FACILITY DIRECTORY

## BASSANO AB

CEN2

<b>REF</b>	N50 48 W112 28 0.5N 16°E UTC-7(6) Elev 2613' A5005 E-16	
<b>OPR</b>	Town 403-641-3788 Reg	
<b>PF</b>	B-1 C-2,4,5	
<b>FLT PLN</b>	NOTAM FILE CYBW	
<b>FIC</b>	Edmonton 866-WXBRIEF (Toll free within Canada) or 866-541-4102 (Toll free within Canada & USA)	
<b>ACC</b>	Edmonton IFR 888-358-7526 or 780-890-8304/8305	
<b>RWY DATA</b>	Rwy 07(074°)/25(254°) 2950x75 asphalt Opr Ltd win maint	
<b>RCR</b>	tfc 123.2 5NM 5700 ASL	
<b>ATF</b>	tfc 123.2 5NM 5700 ASL	
<b>LIGHTING</b>	07-(TE ME), 25-(TE ME) ARCAL-123.2 type K	
<b>COMM</b>	tfc 123.2 5NM 5700 ASL	

## BASSANO (HEALTH CENTRE) AB (Heli)

CBL4

<b>REF</b>	N50 47 25 W112 27 39 Adj N 16°E UTC-7(6) Elev 2606' A5005 E-16	
<b>OPR</b>	Bassano Health Centre 403-641-6100 Cert PPR	
<b>FLT PLN</b>	NOTAM FILE CYBW	
<b>FIC</b>	Edmonton 866-WXBRIEF (Toll free within Canada) or 866-541-4102 (Toll free within Canada & USA)	
<b>ACC</b>	Edmonton IFR 888-358-7526 or 780-890-8304/8305	
<b>PAD DATA</b>	35' dia concrete Cert for heli 42' overall length.	
<b>LIGHTING</b>	RY(LO) (green lighting)	
<b>COMM</b>	tfc 123.2 5NM 5700 ASL centred on Bassano A/D 0.5NM N.	
<b>PRO</b>	Arr/dep btwn 320° & 050° fr helipad.	
<b>CAUTION</b>	180' antenna twr 1970' NE pad.	



# CANADA FLIGHT SUPPLEMENT / GPH 205

Effective 0901Z 20 November 2008 to 0901Z 15 January 2009

AERODROME/FACILITY DIRECTORY B45

## BATHURST NB

CZBF

<b>REF</b>	N47 37 47 W65 44 20 3WNW 20°W UTC-4(3) Elev 193' A5003 F-22 LO8 HI6 CAP	
<b>OPR</b>	Bathurst Regional Aprt Comsn Inc 506-549-5050 0830-03Z‡ Mon-Fri, 0830-22Z‡ Sat, 14-03Z‡ Sun Cert Ldg fees	
<b>PF</b>	A-1,6 C-2,3,4,5	
<b>FLT PLN</b>	NOTAM FILE CYCL	
<b>FIC</b>	(bil) Québec 866-WXBRIEF or (French) 866-GOMÉTÉO (Toll free within Canada) or 866-541-4105 (Toll free within Canada & USA)	
<b>ACC</b>	Moncton 506-867-7176 or 866-480-8200 Flt Plns by Fax	
<b>WX</b>	506-867-7180 & include phone numbers where pilot can be reached prior to dep METAR H24. TAF 10-04Z‡, issue times: 10, 14, 20, 02Z‡.	
<b>SERVICES</b>	Call out chg may be levied for one or more svcs	
<b>FUEL</b>	100LL JA-1, FSII SP opr 11-02Z‡ Mon-Fri, 11-21Z‡ Sat, 14-02Z‡ Sun, ltd hrs hols O/T PNR	
<b>S</b>	4,5,6	
<b>SUP FL</b>	D-ice PNR	
<b>JASU</b>	10/15 PNR	
<b>RWY DATA</b>	Rwy 10(102°)/28(282°) 4500x100 asphalt Rwy 10 down 0.37%	
<b>RCR</b>	Opr 0830-03Z‡ Mon-Fri, 0830-22Z‡ Sat, 14-03Z‡ Sun, ltd hrs hols O/T ltd win maint CRFI, PNR	
<b>LIGHTING</b>	10-AO(TE ME) AP, 28-AO(TE ME) AP ARCAL-122.8 type K	
<b>COMM</b>		
<b>DRCO</b>	(bil) Québec rdo 123.45 (FISE)	
<b>ATF</b>	UNICOM (AU) ltd hrs O/T tfc 122.8 5NM 3200 ASL	
<b>NAV</b>	All nav aids unmonitored when UNICOM clsd.	
<b>NDB</b>	BATHURST 1F 363 (M) N47 37 50 W65 44 41 at A/D	
<b>DME</b>	2F 114.4 Ch 91 N47 37 53 W65 44 40 at A/D Pvt	
<b>CAUTION</b>	Blasting area 3NM radius around aprx N47 28 00 W65 53 45 (11.7NM SW of aprt).	

## BAWL F (BLACKWELLS) AB

CFR2

<b>REF</b>	N52 54 W112 33 4SW 17°E UTC-7(6) Elev 2325' aprx VTA A5015 E-15 E-16
<b>OPR</b>	P. R. Blackwell 780-373-3953 Reg
<b>PF</b>	B-1 D-2,3,4,5,6
<b>FLT PLN</b>	NOTAM FILE CYEG
<b>FIC</b>	Edmonton 866-WXBRIEF (Toll free within Canada) or 866-541-4102 (Toll free within Canada & USA)
<b>RWY DATA</b>	Rwy 16(163°)/34(343°) 2700x50 turf. No win maint.
<b>COMM</b>	
<b>ATF</b>	tfc 123.2 5NM 5400 ASL

# CANADA FLIGHT SUPPLEMENT / GPH 205

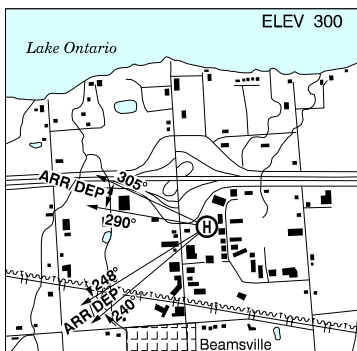
Effective 0901Z 20 November 2008 to 0901Z 15 January 2009

B46 AERODROME/FACILITY DIRECTORY

## BEAMSVILLE / PANTEIRA ON (Heli)

CBE3

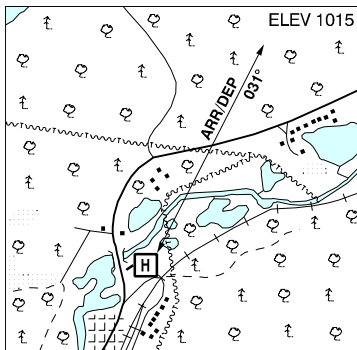
<b>REF</b>	N43 11 11 W79 28 29 Adj N 10°W UTC-5(4) Elev 300' A5000 VTA
<b>OPR</b>	Panterra Heli Support Ltd 905-563-1413 Cert PNR
<b>PF</b>	A-1 C-2,3,5
<b>FLT PLN</b>	NOTAM FILE CYHM
<b>FIC</b>	London 866-WXBRIEF (Toll free within Canada) or 866-541-4104 (Toll free within Canada & USA)
<b>PAD DATA</b>	Hover arr/dep 86' dia 114' dia Turf pad 68' dia concrete
<b>RCR</b>	Opr
<b>PRO</b>	Arr/dep 240°-248° & 290°-305° fr Heli
<b>CAUTION</b>	Lgtd tower 400 ASL 0.21 NM SW. Lgtd McDonald's sign 350 ft ASL 0.13 NM SW. Isolated high terrain 500 ft ASL 3 NM S.



## BEARDMORE (HEALTH CENTRE) ON (Heli)

CPY3

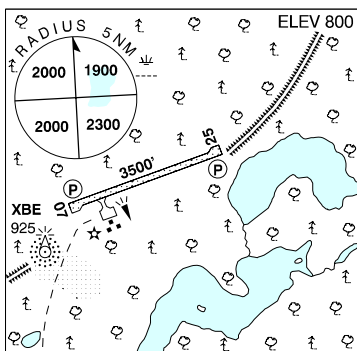
<b>REF</b>	N49 36 31 W87 57 11 Adj N 5°W UTC-5(4) Elev 1015' A5008
<b>OPR</b>	Township of Beardmore 807-875-2639 Reg PPR
<b>FLT PLN</b>	NOTAM FILE CYPL
<b>FIC</b>	Winnipeg 866-WXBRIEF (Toll free within Canada) or 866-541-4103 (Toll free within Canada & USA)
<b>PAD DATA</b>	86' x 86' 114' x 114' Rstd max heli length 57.3'
<b>LIGHTING</b>	RY(LO) RF(FL)
<b>COMM</b>	
<b>A/G</b>	Ambulance dispatch 129.275
<b>PRO</b>	Arr/dep direction brg 031° fr heli.



## BEARSKIN LAKE ON

CNE3

<b>REF</b>	N53 57 56 W91 01 38 3NW 3°W UTC-6(5) Elev 800' A5017 E-17 LO3 CAP RCAP
<b>OPR</b>	Govt of Ontario 807-473-2082 Cert
<b>PF</b>	C-1,4
<b>FLT PLN</b>	NOTAM FILE CYXL
<b>FIC</b>	Winnipeg 866-WXBRIEF (Toll free within Canada) or 866-541-4103 (Toll free within Canada & USA)
<b>RWY DATA</b>	Rwy 07(068°)/25(248°) 3500x100 gravel
<b>RCR</b>	APM 807-363-1071 14-23Z± Mon-Fri exc hols. Rwy strength & cond subject to seasonal & climatic var.



# CANADA FLIGHT SUPPLEMENT / GPH 205

Effective 0901Z 20 November 2008 to 0901Z 15 January 2009

AERODROME/FACILITY DIRECTORY B47

## BEARSKIN LAKE ON (Cont'd)

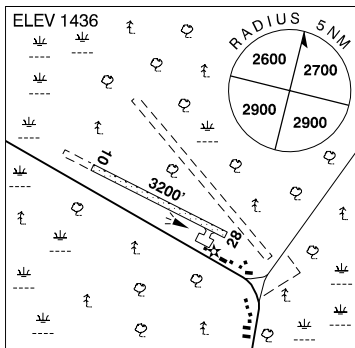
CNE3

<b>LIGHTING</b>	07-(TE LO) AP, 25-(TE LO) AP ARCAL-123.2 type K for APAPI, rwy lgts low ints only.
<b>COMM</b>	
<b>ATF</b>	tfc 123.2 5NM 3800 ASL
<b>NAV</b>	
<b>NDB</b>	XBE 206 (L) N53 57 36 W91 01 59 at A/D Unmonitored

## BEAVAL SK

CJK3

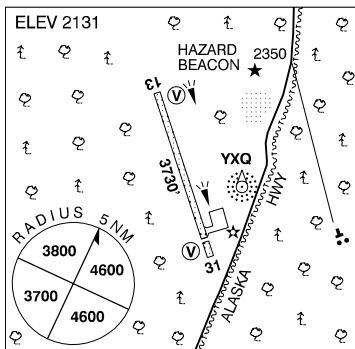
<b>REF</b>	N55 06 37 W107 42 59 4SW 14°E UTC-6 Elev 1436' A5015 E-16 LO1 CAP
<b>OPR</b>	Ministry of Hwys & Infrastructure 306-953-3263 Reg
<b>PF</b>	C-1,2,4,5
<b>FLT PLN</b>	NOTAM FILE CYSF
<b>FIC</b>	Edmonton 866-WXBRIEF (Toll free within Canada) or 866-541-4102 (Toll free within Canada & USA)
<b>SERVICES</b>	
<b>S</b>	6
<b>RWY DATA</b>	Rwy 10(097°)Y28(277°) 3200x75 gravel
<b>RCR</b>	Area office 306-235-1730 or Opr Ltd win maint Rwy strength & cond subject to seasonal and/or climatic vars.
<b>LIGHTING</b>	10-(TE LO), 28-(TE LO) ARCAL-123.2 type J
<b>COMM</b>	
<b>ATF</b>	tfc 123.2 5NM 4500 ASL



## BEAVER CREEK YT

CYXQ

<b>REF</b>	N62 24 37 W140 52 03 1NW 25°E UTC-8(7) Elev 2131' A5028 A5099 D-12 LO5 CAP
<b>OPR</b>	Govt of Yukon 867-634-2450 or 867-862-7282/7227 Reg
<b>PF</b>	A-1 C-1,2,4,5
<b>CUST</b>	AOE/15 888-226-7277 Seasonal May-Oct
<b>FLT PLN</b>	NOTAM FILE CYXQ
<b>FIC</b>	Whitehorse 866-WXBRIEF (Toll free within Canada) or 866-541-4107 (Toll free within Canada & USA)
<b>ACC</b>	Edmonton IFR 888-358-7526 or 780-890-8304/8305
<b>CARS</b>	867-862-7282 Ltd hrs (see COMM)
<b>WX</b>	METAR dur CARS hrs of ops (see COMM).
<b>SERVICES</b>	
<b>S</b>	4,5,6
<b>RWY DATA</b>	Rwy 13(137°)Y31(317°) 3730x100 gravel Thld 31 displ 340'. Rwy 13 up 0.45%.
<b>RCR</b>	CARS, dur CARS hrs ops (see COMM) Ltd maint



# CANADA FLIGHT SUPPLEMENT / GPH 205

Effective 0901Z 20 November 2008 to 0901Z 15 January 2009

## B48 AERODROME/FACILITY DIRECTORY

### BEAVER CREEK YT (Cont'd)

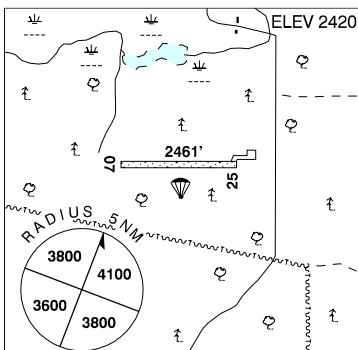
CYXQ

<b>LIGHTING</b>	13-(TE LO) V1, 31-(TE LO) V1 ARCAL-122.1 type J. Ngt ops not recommended unless hazard beacon oprg.
<b>COMM</b>	
<b>RCO</b>	Whitehorse rdo 126.7 (FISE)
<b>MF</b>	aprt rdo ltd hrs O/T tfc 122.1 5NM 5200 ASL (CAR 602.98)
<b>APRT RDO</b>	122.1 (V) 17-23Z†
<b>NAV</b>	
<b>NDB</b>	YXQ 239 (L) N62 24 32 W140 51 42 at A/D Unmonitored when CARS clsd
<b>PRO</b>	Rgt hand circuits rwy 13 (CAR 602.96).
<b>CAUTION</b>	Hill 0.5NM NE aprt.

### BEAVERLEY BC

CBA8

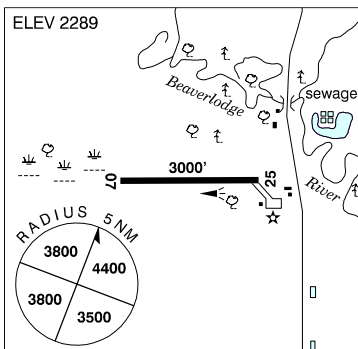
<b>REF</b>	N53 51 20 W122 54 27 2.5N 21°E UTC-8(7) Elev 2420' A5014 E-15
<b>OPR</b>	Cyr's Recreational Avn Park 250-964-8228/613-6149 Reg
<b>PF</b>	B-1 C-2 D-3,4,5,6
<b>FLT PLN</b>	NOTAM FILE CYXS
<b>FIC</b>	Kamloops 866-WXBRIEF (Toll free within Canada) or 866-541-4101 (Toll free within Canada & USA)
<b>SERVICES</b>	
<b>S</b>	2,4,5
<b>RWY DATA</b>	Rwy 07(069°)/25(249°) 2461x50 gravel Opr Jun-Sep No win maint. Rwy soft in spring & fall.
<b>RCR</b>	
<b>COMM</b>	
<b>ATF</b>	tfc 122.8 2NM 4000 ASL
<b>CAUTION</b>	Parajumping in area to 12,500 ASL by NOTAM. 80' trees 100' S rwy. Wildlife ocsl on rwy.



### BEAVERLODGE AB

CEU2

<b>REF</b>	N55 11 03 W119 26 51 2S 21°E UTC-7(6) Elev 2289' A5014 E-15 LO1
<b>OPR</b>	Town 780-354-2201 Reg
<b>PF</b>	B-1 C-2,4,5
<b>FLT PLN</b>	AM FILE CYQU
<b>FIC</b>	Edmonton 866-WXBRIEF (Toll free within Canada) or 866-541-4102 (Toll free within Canada & USA)
<b>ACC</b>	Edmonton IFR 888-358-7526 or 780-890-8304/8305
<b>RWY DATA</b>	Rwy 07(069°)/25(249°) 3000x75 asphalt
<b>RCR</b>	Opr Ltd maint
<b>LIGHTING</b>	07-(TE ME), 25-(TE ME) ARCAL-123.2 type K



# CANADA FLIGHT SUPPLEMENT / GPH 205

Effective 0901Z 20 November 2008 to 0901Z 15 January 2009

AERODROME/FACILITY DIRECTORY B49

## BEAVERLODGE AB (Cont'd)

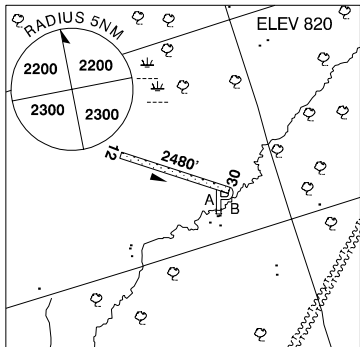
CEU2

<b>COMM</b>	
<b>ATF</b>	tfc 123.2 5NM 5300 ASL
<b>CAUTION</b>	Gliding activity adj to N side of rwy.

## BEAVERTON ON

CBV2

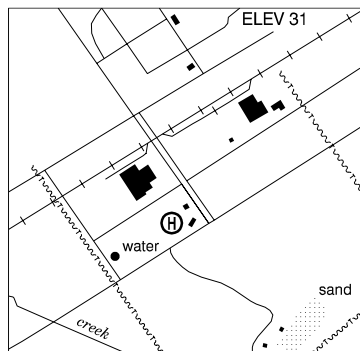
<b>REF</b>	N44 26 51 W79 06 01 3E 11°W UTC-5(4) Elev 820' A5000 F-21
<b>OPR</b>	Rory Fonseca 705-426-9502 Reg PNR
<b>PF</b>	B-1 C-2,3,4,5,6
<b>FLT PLN</b>	NOTAM FILE CYKZ
<b>FIC</b>	London 866-WXBRIEF (Toll free within Canada) or 866-541-4104 (Toll free within Canada & USA)
<b>SERVICES</b>	
<b>FUEL</b>	100LL (Check OPR)
<b>OIL</b>	15W50
<b>S</b>	1,4,5,6
<b>RWY DATA</b>	Rwy 30(299°)/12(119°) 2480X75 turf
<b>RCR</b>	Opr Ltd win maint, soft when wet.
<b>COMM</b>	
<b>ATF</b>	tfc 122.8 5NM 3900 ASL
<b>CAUTION</b>	P-lines 50' AGL aprox 2400' E thld 30. Creek 100' SE thld 30. Wildlife in vic of rwy.



## BÉCANCOUR QC (Heli)

CSV3

<b>REF</b>	N46 21 54 W72 23 46 3SW 17°W UTC-5(4) Elev 31' A5002
<b>OPR</b>	Société du Parc Industriel et Portuaire de Bécancour 819-294-6656 Reg PPR
<b>PF</b>	B-1 C-2,3
<b>FLT PLN</b>	(bil) NOTAM FILE CYQB
<b>FIC</b>	Québec 866-GOMÉTÉO or 866-WXBRIEF (Toll free within Canada) or 866-541-4105 (Toll free within Canada & USA)
<b>PAD DATA</b>	65' x 65' asphalt 85' x 85'
<b>COMM</b>	
<b>ATF</b>	tfc 123.2 5NM 3100 ASL



# CANADA FLIGHT SUPPLEMENT / GPH 205

Effective 0901Z 20 November 2008 to 0901Z 15 January 2009

## B50 AERODROME/FACILITY DIRECTORY

### BEDDIS BEACH BC (Heli)

**CBB4**

<b>REF</b>	N48 48 00 W123 25 25 19°E UTC-8(7) Elev 717' VTA A5004	
<b>OPR</b>	Pat and Rosemarie Keough 250-653-4993 Reg PNR	
<b>PF</b>	A-1 C-2,5 D-3,4,6	
<b>FLT PLN</b>	NOTAM FILE CYYJ	
<b>FIC</b>	Kamloops 866-WXBRIEF (Toll free within Canada) or 866-541-4101 (Toll free within Canada & USA)	
<b>SERVICES</b>	4,5	
<b>PAD DATA</b>	20' dia gravel 100'x300' grass	
<b>RCR</b>	Opr 15-05Z‡ not always monitored	
<b>COMM</b>		
<b>TWR</b>	Victoria 119.7(inner) 119.1(outer) (E) 14-08Z‡ O/T call automatically transferred to Vancouver FSS	
<b>ATF</b>	tfc 123.2 5NM 1200 ASL Excluding area within Victoria Intl CZ	
<b>TML</b>	Victoria 127.8 abv 2500 ASL	
<b>CAUTION</b>	Subject to erratic winds	

### BEISEKER AB

**CFV2**

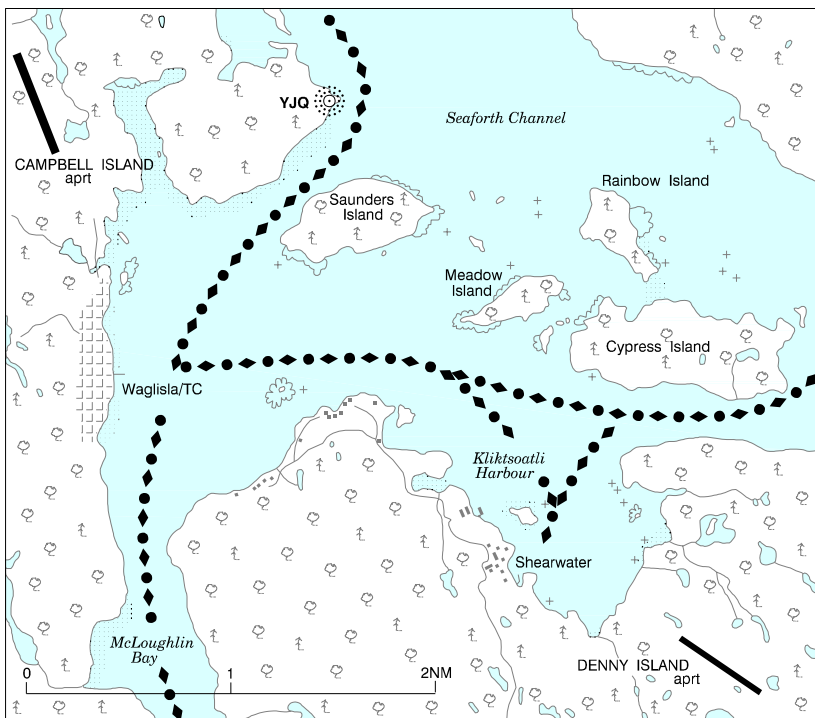
<b>REF</b>	N51 23 36 W113 28 19 2E 17°E UTC-7(6) Elev 3036' VTA A5005 E-15 E-16	
<b>OPR</b>	Village 403-947-3774 Reg	
<b>PF</b>	B-1 C-2,4,5	
<b>FLT PLN</b>	NOTAM FILE CYBW	
<b>FIC</b>	Edmonton 866-WXBRIEF (Toll free within Canada) or 866-541-4102 (Toll free within Canada & USA)	
<b>ACC</b>	Edmonton IFR 888-358-7526 or 780-890-8304/8305	
<b>RWY DATA</b>	Rwy 16(163°)/34(343°) 2950x75 asphalt	
<b>RCR</b>	Opr Ltd maint	
<b>COMM</b>		
<b>ATF</b>	tfc 123.2 5NM 6100 ASL	
<b>PRO</b>	Rgt hand circuits rwy 16 (CAR 602.96).	
<b>CAUTION</b>	Parachuting E of rwy dur daylight hrs. Extv ultra-light activity.	

# CANADA FLIGHT SUPPLEMENT / GPH 205

Effective 0901Z 20 November 2008 to 0901Z 15 January 2009

AERODROME/FACILITY DIRECTORY B51

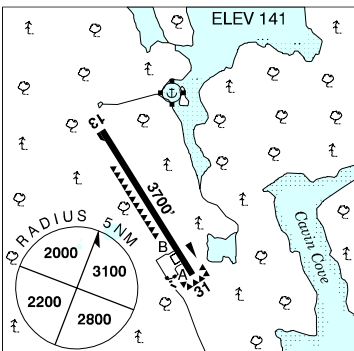
## BELLA BELLA VFR TERMINAL PROCEDURES CHART



### BELLA BELLA (CAMPBELL ISLAND) BC

CBBC

<b>REF</b>	N52 11 06 W128 09 24 1NW 21°E UTC-8(7) Elev 141' A5004 A5013 E-15 LO2 HI3 CAP RCAP
<b>OPR</b>	Bella Bella Aprt Ltd 250-957-2868 Cert
<b>PF</b>	A-1 C-2,3,4,5
<b>FLT PLN</b>	NOTAM FILE CYZT
<b>FIG</b>	Kamloops 866-WXBRIEF (Toll free within Canada) or 866-541-4101 (Toll free within Canada & USA)
<b>WX</b>	Legacy AWOS WxCam METAR H24 TAF 14-06Z±, issue times: 14, 19, 01Z (DT 13, 19, 01Z).
<b>SERVICES</b>	
<b>FUEL</b>	JA, 100LL Wag fuel svcs, ctc for availability 250-957-2645 09-17 lcl
<b>PVT ADV</b>	Wag fuel 131.05
<b>RWY DATA</b>	Rwy 13(131°)/31(311°) 3700x75 asphalt Rwy 31 up 0.3% last 1500' up 2%. Rwy 13 down 2%.
<b>RCR</b>	Opr Ltd win maint



# CANADA FLIGHT SUPPLEMENT / GPH 205

Effective 0901Z 20 November 2008 to 0901Z 15 January 2009

## B52 AERODROME/FACILITY DIRECTORY

### BELLA BELLA (CAMPBELL ISLAND) BC (Cont'd)

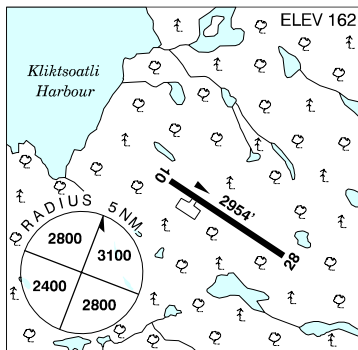
CBBC

<b>COMM</b>	<p><b>RCO</b> Pacific rdo 126.7 (FISE)</p> <p><b>ATF</b> tfc 122.8 5NM 3200 ASL</p>
<b>NAV</b>	<p><b>NDB</b> BELLA BELLA YJQ 325 (L) N52 11 07 W128 06 49 248° 1.5NM to A/D</p>
<b>CAUTION</b>	Rock outcropping aprx 120' NE of rwy.

### BELLA BELLA (DENNY ISLAND) BC

CYJQ

<b>REF</b>	N52 08 23 W128 03 49 2E 21°E UTC-8(7) Elev 162' A5004 A5013 E-15 LO2 RCAP
<b>OPR</b>	Denny Island Aprt Commission C/O Central Coast Regional District 250-957-2305 Reg
<b>PF</b>	C-1,2,5
<b>FLT PLN</b>	NOTAM FILE CYZT
<b>FIC</b>	Kamloops 866-WXBRIEF (Toll free within Canada) or 866-541-4101 (Toll free within Canada & USA)
<b>RWY DATA</b>	Rwy 10/28 2954x100 asphalt
<b>RCR</b>	Opr No win maint

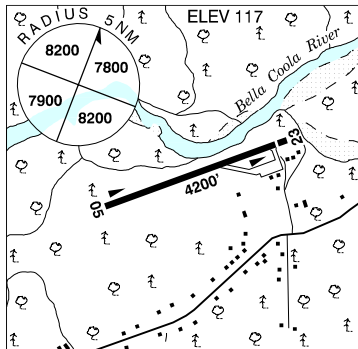


<b>COMM</b>	<p><b>RCO</b> Pacific rdo (Bella Bella (Campbell Is.) 126.7 (FISE) May not be receivable on ground.</p> <p><b>ATF</b> tfc 122.8 5NM 3200 ASL</p>
<b>NAV</b>	<p><b>NDB</b> BELLA BELLA YJQ 325 (L) N52 11 07 W128 06 49 125° 3.3NM to A/D</p>

### BELLA COOLA BC

CYBD

<b>REF</b>	N52 23 15 W126 35 45 6NE 21°E UTC-8(7) Elev 117' A5013 E-15 LO2
<b>OPR</b>	Central Coast Regional District 250-799-5291 Cert Opr
<b>PF</b>	A-1 C-2,3,4,5,6
<b>FLT PLN</b>	NOTAM FILE CYZT
<b>FIC</b>	Kamloops 866-WXBRIEF (Toll free within Canada) or 866-541-4101 (Toll free within Canada & USA)
<b>WX</b>	METAR 15-01Z (DT13-01Z).
<b>SERVICES</b>	08-15 hrs lcl ctc Pacific Coastal Airlines 250-982-2225
<b>FUEL</b>	100LL, JA
<b>OIL</b>	All
<b>S</b>	4,5
<b>RWY DATA</b>	Rwy 05/23 4200x100 asphalt Thld 23 displ 206'. W twy rstd to 12,500 lbs or less.
<b>RCR</b>	Opr 16-23Z† Ltd win maint





# CANADA FLIGHT SUPPLEMENT / GPH 205

Effective 0901Z 20 November 2008 to 0901Z 15 January 2009

AERODROME/FACILITY DIRECTORY B53

## BELLA COOLA BC (Cont'd)

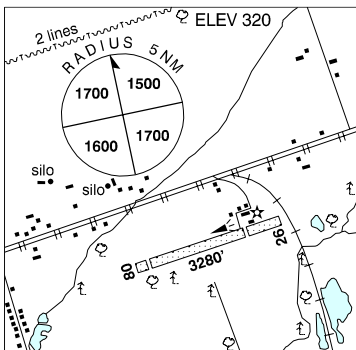
CYBD

<b>COMM</b>	<b>RCO</b> Pacific rdo 126.7 (FISE) <b>ATF</b> tfc 122.8 5NM 3100 ASL
<b>PRO</b>	Rgt hand circuits rwy 05 (CAR 602.96).
<b>CAUTION</b>	10' dike lctd 250' E of thld rwy 23.

## BELLEVILLE ON

CNU4

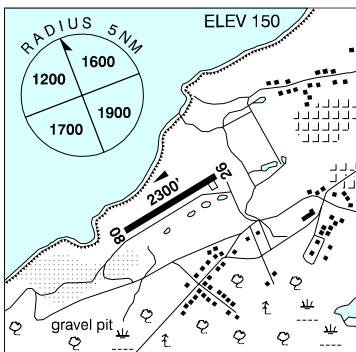
<b>REF</b>	N44 11 32 W77 18 34 1.8E 12°W UTC-5(4) Elev 320' A5000 F-21 LO6 LO7 RCAP
<b>OPR</b>	J. Marker 613-966-4020 Reg PPR
<b>PF</b>	B-1 C-2,3,4,5,6
<b>FLT PLN</b>	NOTAM FILE CYGK
<b>FIC</b>	London 866-WXBRIEF (Toll free within Canada) or 866-541-4104 (Toll free within Canada & USA)
<b>SERVICES</b>	<b>S</b> 1
<b>RWY DATA</b>	Rwy 08/26 3280x150 turf/gravel Thld 08 displ 240'. Thld 26 displ 740'. <b>RCR</b> Opr Compact snow in win.
<b>PRO</b>	Refer VTPC Trenton for east & westbound rte & area A & B alts.
<b>CAUTION</b>	Glider activity to 2000 ASL.



## BELL ISLAND NL

CVC4

<b>REF</b>	N47 38 W52 59 Adj 21°W UTC-3 1/2(21/2) Elev 150' A5012 E-19 F-22
<b>OPR</b>	Govt of Newfoundland & Labrador 709-729-2382 Reg
<b>PF</b>	C-1,2,3,4,5
<b>FLT PLN</b>	NOTAM FILE CYYT
<b>FIC</b>	Halifax 866-WXBRIEF or (French) 866-GOMÉTÉO (Toll free within Canada) or 866-541-4106 (Toll free within Canada & USA)
<b>RWY DATA</b>	Rwy 08/26 2300x75 asphalt <b>RCR</b> Dept of Highways 709-488-3842 Ltd win maint PNR
<b>COMM</b>	<b>ATF</b> tfc 123.2 5NM 3200 ASL
<b>CAUTION</b>	Ocsl rdo controlled acft activity. Possible wildlife on rwy.



# CANADA FLIGHT SUPPLEMENT / GPH 205

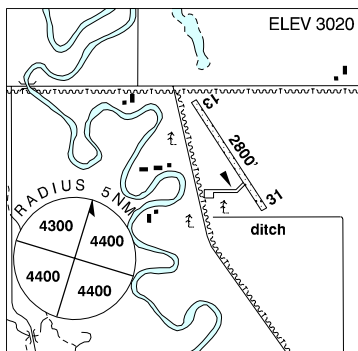
Effective 0901Z 20 November 2008 to 0901Z 15 January 2009

## B54 AERODROME/FACILITY DIRECTORY

### BENALTO / HILLMAN'S FARM AB

CBH7

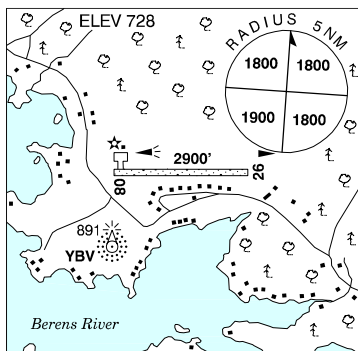
<b>REF</b>	N52 13 33 W114 15 21 6E 17°E UTC-7(6) Elev 3020' A5005 A5015
<b>OPR</b>	Gary Hillman 403-728-3630 Reg PPR
<b>PF</b>	C-1
<b>FLT PLN</b>	NOTAM FILE CYEG
<b>FIC</b>	Edmonton 866-WXBRIEF (Toll free within Canada) or 866-541-4102 (Toll free within Canada & USA)
<b>SERVICES</b>	
<b>S</b>	2, 5
<b>RWY DATA</b>	Rwy 13(130°)/31(310°) 2800x80 turf
<b>RCR</b>	Hillman Air Ltd 403-886-4187 ltd win maint
<b>COMM</b>	
<b>ATF</b>	tfc 123.2 5NM 6100 ASL Unmonitored
<b>CAUTION</b>	Ditch at thld of rwy 31. Power lines at thld of rwy 13.



### BERENS RIVER MB

CYBV

<b>REF</b>	N52 21 32 W97 01 06 Adj E 4°E UTC-6(5) Elev 728' A5016 E-16 E-17 LO4 RCAP
<b>OPR</b>	Govt of Manitoba 204-677-6722 Cert
<b>PF</b>	A-1 C-2,3,4,5 Tml bldg opr 13-18Z†, 19-2115Z† Mon-Fri, clsd Sat, Sun & hols
<b>FLT PLN</b>	NOTAM FILE CYDN
<b>FIC</b>	Winnipeg 866-WXBRIEF (Toll free within Canada) or 866-541-4103 (Toll free within Canada & USA)
<b>WX</b>	METAR 13-22Z† Mon-Fri.
<b>RWY DATA</b>	Rwy 08(086°)/26(266°) 2900x75 crushed rock
<b>RCR</b>	APM 204-382-2021 13-18Z†, 19-2115Z† Mon-Fri exc hols O/T204-382-2072
<b>LIGHTING</b>	08-(TE LO), 26-(TE LO) ARCAL-122.8 type J (see CAUTION).
<b>COMM</b>	
<b>RCO</b>	Winnipeg rdo 123.475 (FISE) 126.7 (bcst)
<b>ATF</b>	UNICOM 122.8 5NM 3800 ASL
<b>NAV</b>	
<b>NDB</b>	YBV 370 (L) N52 21 15 W97 01 27 035° 0.4NM to A/D Unmonitored
<b>CAUTION</b>	Extv bird activity Apr-Oct. Rwy edge lgt installed higher than std (aprx 27 inches high loc 5' outside rwy edge).



# CANADA FLIGHT SUPPLEMENT / GPH 205

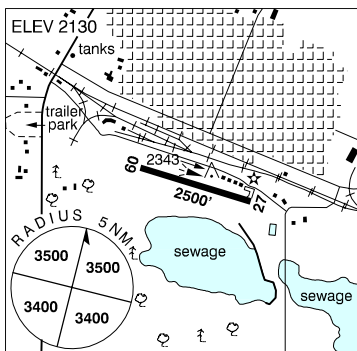
Effective 0901Z 20 November 2008 to 0901Z 15 January 2009

AERODROME/FACILITY DIRECTORY B55

## BIGGAR SK

CJF8

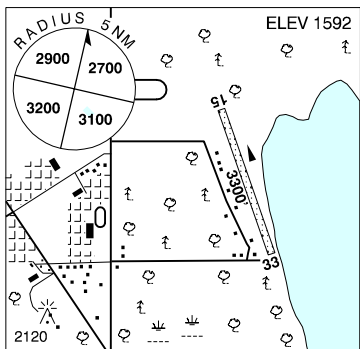
<b>REF</b>	N52 03 04 W107 59 18 Adj S 14°E UTC-6 Elev 2130' A5006 A5015 E-16 LO2
<b>OPR</b>	Town of Biggar 306-948-3317 Fax 306-948-5134 Reg
<b>PF</b>	C-2,3,4,5
<b>FLT PLN</b>	NOTAM FILE CYXE
<b>FIG</b>	Edmonton 866-WXBRIEF (Toll free within Canada) or 866-541-4102 (Toll free within Canada & USA)
<b>RWY DATA</b>	Rwy 09(093°)/27(273°) 2500x75 asphalt
<b>RCR</b>	Opr
<b>LIGHTING</b>	09-(TE LO), 27-(TE LO)
<b>COMM</b>	
<b>ATF</b>	tfc 123.2 5NM 5200 ASL



## BIG RIVER SK

CKX8

<b>REF</b>	N53 50 10 W107 00 34 13°E UTC-6 Elev 1592' A5015 E-16 LO1 LO2
<b>OPR</b>	Town of Big River 306-469-2112 Reg
<b>PF</b>	B-1 C-2,4,5
<b>FLT PLN</b>	NOTAM FILE CYP A
<b>FIG</b>	Edmonton 866-WXBRIEF (Toll free within Canada) or 866-541-4102 (Toll free within Canada & USA)
<b>SERVICES</b>	<b>S</b> 4,5
<b>RWY DATA</b>	Rwy 15(148°)/33(328°) 3300x65 gravel/earth edges soft
<b>RCR</b>	Opr Ltd win maint
<b>COMM</b>	
<b>ATF</b>	tfc 123.2 5NM 4600 ASL
<b>CAUTION</b>	Wildlife in vic of rwy.



# CANADA FLIGHT SUPPLEMENT / GPH 205

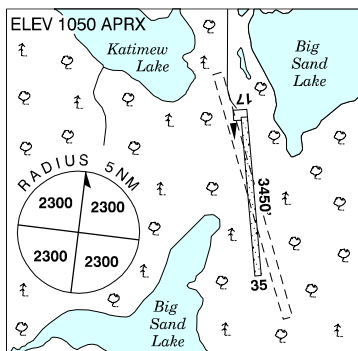
Effective 0901Z 20 November 2008 to 0901Z 15 January 2009

B56 AERODROME/FACILITY DIRECTORY

## BIG SAND LAKE MB

CJQ9

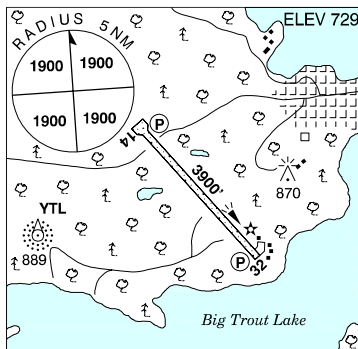
<b>REF</b>	N57 37 10 W99 52 31 1S 7°E UTC-6(5) Elev 1050' aprx A5024 D-13
<b>OPR</b>	Big Sand Lake Lodge 204-774-6666 Reg
<b>PF</b>	C-1,2,5 PNR Opr
<b>FLT PLN</b>	NOTAM FILE CYYL
<b>FIC</b>	Winnipeg 866-WXBRIEF (Toll free within Canada) or 866-541-4103 (Toll free within Canada & USA)
<b>RWY DATA</b>	Rwy 17(168°)/35(348°) 3450x105 clay/sand
<b>RCR</b>	Opr Jun 1-Sep 30 No win maint.
<b>COMM</b>	
<b>ATF</b>	tfc 122.8 5NM 4100 ASL
<b>CAUTION</b>	New rwy under const 1 May-2 Oct 2006. Men & eqpt vic of existing rwy. Make low pass prior to ldg. PNR dur const, ctc opr. Wildlife in vicinity.



## BIG TROUT LAKE ON

CYTL

<b>REF</b>	N53 49 04 W89 53 49 0.6SW 4°W UTC-6(5) Elev 729' A5017 E-17 LO3 HI4 CAP
<b>OPR</b>	Govt of Ontario 807-473-2082 Cert
<b>PF</b>	C-1,4
<b>FLT PLN</b>	NOTAM FILE CYXL
<b>FIC</b>	Winnipeg 866-WXBRIEF (Toll free within Canada) or 866-541-4103 (Toll free within Canada & USA)
<b>WX</b>	Legacy AWOS 807-537-2516 (see COMM). TAF H24, issue times: 02, 08, 14, 20Z.
<b>RWY DATA</b>	Rwy 14(138°)/32(318°) 3900x100 gravel Rwy 32 up 0.51%
<b>RCR</b>	APM 807-537-2366 14-23Z (DT 15- 24Z) Mon-Fri exc hols. Rwy strength & cond subject to seasonal & climatic var.
<b>LIGHTING</b>	14-(TE ME) AP, 32-(TE ME) AP ARCAL-123.2 type K
<b>COMM</b>	
<b>DRCO</b>	Winnipeg rdo 123.55 (FISE)
<b>ATF</b>	tfc 123.2 5NM 3800 ASL
<b>PAL</b>	Winnipeg Ctr 135.15
<b>Legacy AWOS</b>	128.7
<b>NAV</b>	
<b>NDB</b>	YTL 328 (M) N53 48 55 W89 54 46 080° 0.6NM to A/D Unmonitored



**BILLY BISHOP REGIONAL ON** — See OWEN SOUND / BILLY BISHOP REGIONAL

# CANADA FLIGHT SUPPLEMENT / GPH 205

Effective 0901Z 20 November 2008 to 0901Z 15 January 2009

AERODROME/FACILITY DIRECTORY B57

## BIRCH HILLS SK

CJD3

<b>REF</b>	N52 59 27 W105 26 41 Adj NW 12°E UTC-6 Elev 1500' A5015 E-16	
<b>OPR</b>	Town 306-749-2232 Fax 306-749-2545 Reg	
<b>PF</b>	B-1 C-2,4,5	
<b>FLT PLN</b>	NOTAM FILE CYP <b>FIC</b> Edmonton 866-WXBRIEF (Toll free within Canada) or 866-541-4102 (Toll free within Canada & USA)	
<b>SERVICES</b>		
<b>FUEL</b>	100LL 306-749-2287/2742/2913 MG-1	
<b>OIL</b>	All	
<b>RWY DATA</b>	Rwy 09(088°)/27(268°) 2660x75 asphalt Rwy 17(168°)/35(348°) 1800x75 turf	
<b>RCR</b>	306-749-2287/2742 Ltd win maint	
<b>LIGHTING</b>	09-(TE LO), 27-(TE LO) ARCAL-123.2 type J	
<b>COMM</b>		
<b>ATF</b>	tfc 123.2 5NM 4500 ASL	
<b>CAUTION</b>	Extv glider ops within 10NM of A/D. Lgtd twr 1875 ASL (365 AGL) 3.6NM N of A/D.	

## BIRCH MOUNTAIN AB

CFM2

<b>REF</b>	N57 42 W111 50 18°E UTC-7(6) Elev 2600' aprx A5023 D-13	
<b>OPR</b>	Alberta Sustainable Resource Development, Forest Protection Division Fort McMurray 780-743-7125 Reg	
<b>FLT PLN</b>	NOTAM FILE CYMM <b>FIC</b> Edmonton 866-WXBRIEF (Toll free within Canada) or 866-541-4102 (Toll free within Canada & USA)	
<b>ACC</b>	Edmonton IFR 888-358-7526 or 780-890-8304/8305	
<b>RWY DATA</b>	Rwy 08/26 2700x75 turf	
<b>RCR</b>	Opr Ltd maint. No win maint	
<b>COMM</b>		
<b>ATF</b>	tfc 123.2 5NM 5600 ASL	
<b>CAUTION</b>	Steel-cable guyed antenna twr 2877 ASL 247 AGL aprx 1000' E thld rwy 26.	

# CANADA FLIGHT SUPPLEMENT / GPH 205

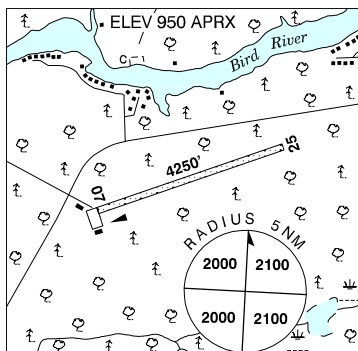
Effective 0901Z 20 November 2008 to 0901Z 15 January 2009

B58 AERODROME/FACILITY DIRECTORY

## BIRD RIVER (LAC DU BONNET) MB

CJP7

<b>REF</b>	N50 23 48 W95 44 06 2NE 3°E UTC-6(5) Elev 950' aprx A5007 E-17
<b>OPR</b>	Tall Timber Avn Ltd 204-345-2972 Reg
<b>PF</b>	C-1,2,5
<b>FLT PLN</b>	NOTAM FILE CYDN
<b>FIC</b>	Winnipeg 866-WXBRIEF (Toll free within Canada) or 866-541-4103 (Toll free within Canada & USA)
<b>RWY DATA</b>	Rwy 07(070°)/25(250°) 4250x100 turf/gravel
<b>RCR</b>	Opr No win maint. Rwy edges soft when wet.
<b>COMM</b>	
<b>ATF</b>	Bird River UNICOM ltd hrs O/T tfc 122.8 5NM 4000 ASL

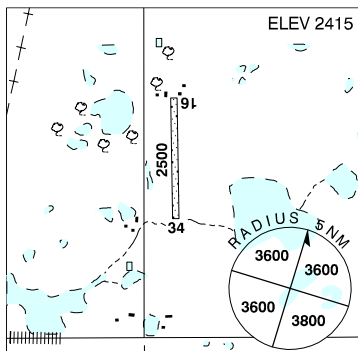


## BISHELL'S AB — See CARSTAIRS / BISHELL'S

## BJORGUM FARM AB

CFD9

<b>REF</b>	N53 05 00 W112 48 10 2N 17°E UTC-7(6) Elev 2415' VTA A5015 E-15 E-16
<b>OPR</b>	Keith Bjorgum 780-672-7218 Reg PPR
<b>FLT PLN</b>	NOTAM FILE CYEG
<b>FIC</b>	Edmonton 866-WXBRIEF (Toll free within Canada) or 866-541-4102 (Toll free within Canada & USA)
<b>ACC</b>	Edmonton IFR 888-358-7526 or 780-890-8304/8305
<b>RWY DATA</b>	Rwy 16(162°)/34(342°) 2500x60 turf
<b>COMM</b>	
<b>ATF</b>	UNICOM (Camrose) ltd hrs O/T tfc 122.8 5NM 5500 ASL
<b>CAUTION</b>	Trees at N end rwy.



# CANADA FLIGHT SUPPLEMENT / GPH 205

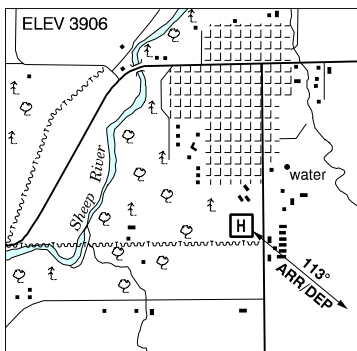
Effective 0901Z 20 November 2008 to 0901Z 15 January 2009

AERODROME/FACILITY DIRECTORY B59

## BLACK DIAMOND (OILFIELDS GEN HOSP) AB (Heli)

CFL3

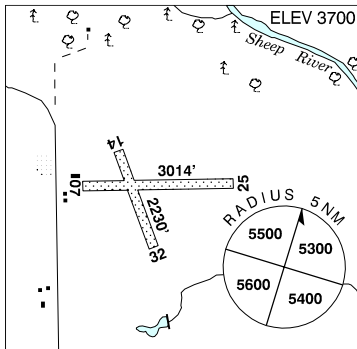
<b>REF</b>	N50 40 44 W114 14 03 Adj S 17°E UTC-7(6) Elev 3906' VTA A5005
<b>OPR</b>	Oilfields Gen Hosp 403-933-2222 Cert PPR
<b>FLT PLN</b>	NOTAM FILE CYBW
<b>FIC</b>	Edmonton 866-WXBRIEF (Toll free within Canada) or 866-541-4102 (Toll free within Canada & USA)
<b>ACC</b>	Edmonton IFR 888-358-7526 or 780-890-8304/8305
<b>PAD DATA</b>	85' dia
<b>LIGHTING</b>	DR RY(LO)
<b>COMM</b>	
<b>ATF</b>	tfc 123.3 5NM 7000 ASL
<b>PRO</b>	Arr/dep 113° (lgt'd arrow).



## BLACK DIAMOND / CU NIM AB

CEH2

<b>REF</b>	N50 43 21 W114 10 46 3NE 17°E UTC-7(6) Elev 3700' VTA A5005 E-15 E-16
<b>OPR</b>	Cu Nim Gliding Club 403-938-2796 or 403-645-3490 Reg
<b>FLT PLN</b>	NOTAM FILE CYBW
<b>FIC</b>	Edmonton 866-WXBRIEF (Toll free within Canada) or 866-541-4102 (Toll free within Canada & USA)
<b>ACC</b>	Edmonton IFR 888-358-7526 or 780-890-8304/8305
<b>RWY DATA</b>	Rwy 07(075°)/25(255°) 3014x300 turf Rwy 14(137°)/32(317°) 2230x200 turf
<b>RCR</b>	Opr No win maint. Rwy soft when wet. Possible FOD & holes in rwy.
<b>COMM</b>	
<b>ATF</b>	UNICOM ltd hrs O/T tfc 123.4 5NM 6700 ASL
<b>CAUTION</b>	Glider activity CYA263(S) sfc to 8000 ASL; peak periods wknds, hols & evenings. Gliders may be NORDD; activity not ltd to CYA263.



# CANADA FLIGHT SUPPLEMENT / GPH 205

Effective 0901Z 20 November 2008 to 0901Z 15 January 2009

## B60 AERODROME/FACILITY DIRECTORY

### BLACK TICKLE NL

CCE4

<b>REF</b>	N53 28 12 W55 47 15 1NW 24°W UTC-4(3) Elev 57' A5020 E-19 LO7 CAP	
<b>OPR</b>	Govt of Newfoundland & Labrador 709-896-7840 Cert	
<b>PF</b>	C-1,2,4,5	
<b>FLT PLN</b>	NOTAM FILE CYR	
<b>FIC</b>	Hallifax 866-WXBRIEF or (French) 866-GOMÉTÉO (Toll free within Canada) or 866-541-4106 (Toll free within Canada & USA)	
<b>RWY DATA</b>	Rwy 15(145°)/33(325°) 2503x75 gravel	
<b>RCR</b>	Opr 709-471-8898/8907 Ltd win maint, ctc opr.	
<b>LIGHTING</b>	15-AS(TE ME) AV 4°, 33-AS(TE ME) AV 4° ARCAL-122.8 type K, key mic 7 times for RILS.	
<b>COMM</b>		
<b>ATF</b>	tfc 122.8 5NM 3100 ASL	
<b>NAV</b>		
<b>NDB</b>	1E 349 (M) N53 28 00 W55 47 14 024° 0.1NM to A/D Pvt Unmonitored	

### BLACKIE / WILDERMAN FARM AB

CFT2

<b>REF</b>	N50 33 09 W113 35 48 4SE 17°E UTC-7(6) Elev 3350' aprx VTA A5005 E-15 E-16	
<b>OPR</b>	W. E. Wilderman 403-684-3611 Reg	
<b>PF</b>	B-1 D-2,3,5	
<b>FLT PLN</b>	NOTAM FILE CYBW	
<b>FIC</b>	Edmonton 866-WXBRIEF (Toll free within Canada) or 866-541-4102 (Toll free within Canada & USA)	
<b>ACC</b>	Edmonton IFR 888-358-7526 or 780-890-8304/8305	
<b>SERVICES</b>		
<b>FUEL</b>	100LL	
<b>RWY DATA</b>	Rwy 07/25 2700x55 turf	
<b>RCR</b>	Opr Ltd maint. Dur win & spring break-up A/D may be clsd.	
<b>LIGHTING</b>	07-(TE LO), 25-(TE LO), O/R	
<b>COMM</b>		
<b>ATF</b>	tfc 123.2 5NM 6400 ASL	



# CANADA FLIGHT SUPPLEMENT / GPH 205

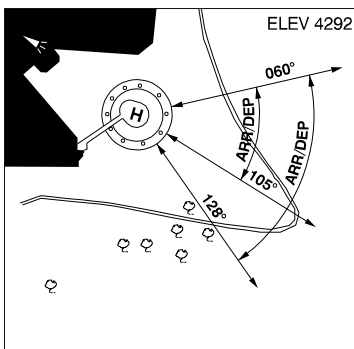
Effective 0901Z 20 November 2008 to 0901Z 15 January 2009

AERODROME/FACILITY DIRECTORY B61

## BLAIRMORE (CROWNSNEST PASS HOSP) AB (Heli)

CBS9

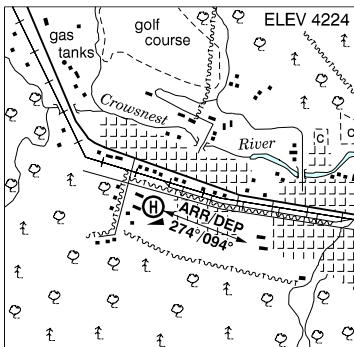
<b>REF</b>	N49 36 58 W114 27 26 Adj E 17°E UTC-7(6) Elev 4292' A5005
<b>OPR</b>	Chinook Health Region 403-562-2831 Cert PPR
<b>FLT PLN</b>	NOTAM FILE CYQL
<b>FIC</b>	Edmonton 866-WXBRIEF (Toll free within Canada) or 866-541-4102 (Toll free within Canada & USA)
<b>ACC</b>	Edmonton IFR 888-358-7526 or 780-890-8304/8305
<b>PAD DATA</b>	38' x 31' (elliptical)
<b>RCR</b>	Opr
<b>LIGHTING</b>	RY(LO) PNR (Lgt'd windsock on hosp roof)
<b>COMM</b>	
<b>ATF</b>	tfc 123.2 5NM 7300 ASL
<b>PRO</b>	Arr/dep btwn 060°-128° fr heli; slope 16% to be used by multi-engine acft only. Arr/dep btwn 060°-105° fr heli; slope 8% to be used by single-engine acft.
<b>CAUTION</b>	Blairmore Forestry Heli adj SW side town.



## BLAIRMORE (FORESTRY) AB (Heli)

CEK4

<b>REF</b>	N49 36 31 W114 27 05 Adj SW 17°E UTC-7(6) Elev 4224' A5005
<b>OPR</b>	Sustainable Resource Development, Forestry Division 403-562-3210 / 403-297-8822 Cert PPR
<b>FLT PLN</b>	NOTAM FILE CYQL
<b>FIC</b>	Edmonton 866-WXBRIEF (Toll free within Canada) or 866-541-4102 (Toll free within Canada & USA)
<b>ACC</b>	Edmonton IFR 888-358-7526 or 780-890-8304/8305
<b>SERVICES</b>	
<b>FUEL</b>	JA (Pvt use or emerg)
<b>COMM</b>	
<b>ATF</b>	tfc 123.2 5NM 7300 ASL
<b>PRO</b>	Arr/dep 274°/094°
<b>CAUTION</b>	P-lines W & parallel to arr/dep.



# CANADA FLIGHT SUPPLEMENT / GPH 205

Effective 0901Z 20 November 2008 to 0901Z 15 January 2009

## B62 AERODROME/FACILITY DIRECTORY

### BLOODVEIN RIVER MB

CZTA

<b>REF</b>	N51 47 04 W96 41 32 Adj E 4°E UTC-6(5) Elev 730' A5007 E-16 E-17 LO4	
<b>OPR</b>	Govt of Manitoba 204-677-6722 Cert	
<b>PF</b>	A-1 C-4 Tml bldg opr 13-18Z†, 19-2115Z† Mon-Fri, clsd Sat, Sun & hols	
<b>FLT PLN</b>	NOTAM FILE CYDN	
<b>FIC</b>	Winnipeg 866-WXBRIEF (Toll free within Canada) or 866-541-4103 (Toll free within Canada & USA)	
<b>RWY DATA</b>	Rwy 18(175°)/36(355°) 2989x75 crushed rock	
<b>RCR</b>	APM 204-395-2321 13-18Z†, 19-2115Z† Mon-Fri exc hols O/T 204-395-2298 Rwy soft dur spring & after rain. Rwy edges soft when wet.	
<b>LIGHTING</b>	18-(TE LO), 36-(TE LO) ARCAL-122.8 type J (see CAUTION).	
<b>COMM</b>		
<b>ATF</b>	UNICOM ltd hrs O/T tfc 122.8 5NM 3800 ASL	
<b>CAUTION</b>	Rwy edge lgt installed higher than std (aprx 27 inches high loc 5' outside rwy edge). Extv bird activity Apr-Oct.	

### BLUE RIVER BC

CYCP

<b>REF</b>	N52 07 W119 17 Adj NE 19°E UTC-8(7) Elev 2240' A5005 A5014 E-15 LO2	
<b>OPR</b>	B.C. Highways 250-569-3750 Reg	
<b>FLT PLN</b>	NOTAM FILE CYKA	
<b>FIC</b>	Kamloops 866-WXBRIEF (Toll free within Canada) or 866-541-4101 (Toll free within Canada & USA)	
<b>WX</b>	METAR 14-24Z (DT 13-01Z).	
<b>RWY DATA</b>	Rwy 01/19 5000x60 asphalt No shoulders or graded area.	
<b>RCR</b>	Maint contractor 250-673-8289 Ltd win maint	
<b>COMM</b>		
<b>ATF</b>	tfc 123.2 5NM 5200 ASL	
<b>CAUTION</b>	Shoulder drops abruptly at edge of pavement. Wildlife in vicinity of rwy.	

# CANADA FLIGHT SUPPLEMENT / GPH 205

Effective 0901Z 20 November 2008 to 0901Z 15 January 2009

AERODROME/FACILITY DIRECTORY B63

## BOB QUINN LAKE BC

CBW4

<b>REF</b>	N56 58 W130 15 23°E UTC-8(7) Elev 2000' aprx A5021 D-12 LO1 RCAP	
<b>OPR</b>	Bear Creek Contracting 250-237-3245 Reg	
<b>PF</b>	C-1	
<b>FLT PLN</b>	NOTAM FILE CYXT	
<b>FIC</b>	Kamloops 866-WXBRIEF (Toll free within Canada) or 866-541-4101 (Toll free within Canada & USA)	
<b>SERVICES</b>	Opr	
<b>FUEL</b>	JA-1, 100LL	
<b>RWY DATA</b>	Rwy 14/32 4200x150 gravel	
<b>RCR</b>	Opr No win maint	
<b>PAD DATA</b>	200' x 100' gravel	
<b>COMM</b>		
<b>MF</b>	tfc 123.2 5NM 5000 ASL (CAR 602.98)	
<b>PRO</b>	Rgt hand circuits rwy 14 (CAR 602.96). Fixed wing acft emplane/deplane pax & cargo on apron only	
<b>CAUTION</b>	Tall trees obstruct apch rwy 32. Sharp drop off both ends. No prepared shoulders. Sharp drop-off and/or soft gnd both sides of rwy. Extv heli tfc at aprt and filter plant 7.5NM N. High density tfc - See Galore Creek/Bob Quinn Lake VTPC.	

## BOLTON ON (Heli)

CNB2

<b>REF</b>	N43 51 02 W79 41 44 2SE 10°W UTC-5(4) Elev 700' VTA A5000	
<b>OPR</b>	National Helicopter Inc 905-893-2727 Cert PPR	
<b>PF</b>	B-1 C-2,3,4,5 D-6	
<b>FLT PLN</b>	NOTAM FILE CYBM	
<b>FIC</b>	London 866-WXBRIEF (Toll free within Canada) or 866-541-4104 (Toll free within Canada & USA)	
<b>ACC</b>	Toronto 905-676-4590	
<b>SERVICES</b>		
<b>FUEL</b>	JA	
<b>PAD DATA</b>	Arr/dep hover area 103' x 105' 4 touchdown pads to west: 1 pad 60' dia asphalt, 3 pads 38' dia asphalt.	
<b>RCR</b>	Opr	
<b>COMM</b>		
<b>ATF</b>	tfc 123.2 5NM 3700 ASL	
<b>PRO</b>	Arr/dep btwn 005°-010° & 095°-205° fr arr/dep hover area loc E of pads.	

# CANADA FLIGHT SUPPLEMENT / GPH 205

Effective 0901Z 20 November 2008 to 0901Z 15 January 2009

B64 AERODROME/FACILITY DIRECTORY

## BONAVENTURE QC

CYVB

<b>REF</b>	N48 04 16 W65 27 37 1.6NE 20°W UTC-5(4) Elev 123' A5010 E-19 F-22 LO8 HI6 CAP	
<b>OPR</b>	Govt of Quebec 418-534-2101 Page 418-392-8024 Cert	
<b>PF</b>	A-1 C-2,3,4,5,6	
<b>FLT PLN</b>	(bil) NOTAM FILE CYGP Québec 866-GOMÉTÉO or 866-WXBRIEF (Toll free within Canada) or 866-541-4105 (Toll free within Canada & USA)	
<b>ACC</b>	Montréal 800-633-1353	
<b>SERVICES</b>	Call out chg may be levied after hrs 418-534-2528 418-392-3570 or 418-391-7233	
<b>FUEL</b>	100LL, JA-1	
<b>SUP FL</b>	D-Ice	
<b>OIL</b>	All	
<b>S</b>	1,2,4,6	
<b>JASU</b>	10/15	
<b>RWY DATA</b>	Rwy 13(135°)/31(315°) 5985x150 asphalt	
<b>TWY</b>	Twy C avbl for light acfts, May 1-Nov 1.	
<b>RCR</b>	Opr 1230-17Z‡, 18-24Z‡ Mon-Fri, Dec-Apr; 11-23Z‡ Mon-Fri, 12-21Z‡ Sat-Sun, May-Nov. NORDO vehicle ops dur win maint. Snow removal 11-01Z O/T 3 hrs PNR. PLR	
<b>LIGHTING</b>	13-AO(TE ME) P2, 31-AS(TE ME) P2 ARCAL-123.0 key mic 7 times for complete system 100% intensity, key mic 5 times to operate at 30% without RILS, (system includes A/D rotating beacon). Twy C not lighted.	
<b>COMM</b>	(bil) Québec rdo 123.55 (FISE) UNICOM (AU) ltd hrs O/T tfc 123.0 5NM 3200 ASL (CAR 602.98)	
<b>NAV</b>	<b>NDB</b> YVB 243 (L) N48 06 13 W65 33 53 134° 4.1NM to thld rwy 13	

## BONNYVILLE AB

CYBF

<b>REF</b>	N54 18 17 W110 44 28 2N 16°E UTC-7(6) Elev 1839' A5015 E-16 LO1 RCAP	
<b>OPR</b>	Town 780-826-3550 Reg	
<b>PF</b>	B-1 C-2,3,4,5,6	
<b>FLT PLN</b>	NOTAM FILE CYBF	
<b>ACC</b>	Edmonton 866-WXBRIEF (Toll free within Canada) or 866-541-4102 (Toll free within Canada & USA) Edmonton IFR 888-358-7526 or 780-890-8304/8305	
<b>SERVICES</b>	Call out chg may be levied for one or more svc	
<b>FUEL</b>	100, JB Cardlock or 780-826-6885 (for JB only)	
<b>OIL</b>	All	

# CANADA FLIGHT SUPPLEMENT / GPH 205

Effective 0901Z 20 November 2008 to 0901Z 15 January 2009

AERODROME/FACILITY DIRECTORY B65

## BONNYVILLE AB (Cont'd)

CYBF

<b>RWY DATA</b>	Rwy 07(074°)/25(254°) 4433x75 asphalt Thld 25 displ 512'.
<b>RCR</b>	Opr Ltd maint
<b>LIGHTING</b>	07(TE ME), 25(TE ME) ARCAL-123.2 type K
<b>COMM</b>	
<b>ATF</b>	tfc 123.2 5NM 4900 ASL
<b>NAV</b>	
<b>NDB</b>	V4 296 (L) N54 18 19 W110 44 39 at A/D Pvt Unmonitored
<b>DME</b>	Y3 109.8 Ch 35 N54 18 23 W110 44 38 (1864') at A/D Pvt Unmonitored

## BONNYVILLE HEALTH CENTRE AB (Heli)

CBN2

<b>REF</b>	N54 15 51 W110 44 26 16°E UTC-7(6) Elev 1825' A5015	
<b>OPR</b>	Bonnyville Health Centre 780-826-3311 Cert PNR	
<b>FLT PLN</b>	NOTAM FILE CYBF Edmonton 866-EXBRIEF (Toll free within Canada) or 866-541-4102 (Toll free within Canada & USA)	
<b>PAD DATA</b>	86' dia concrete 115' dia rstd max heli length 57.4'	
<b>RCR</b>	Opr	
<b>LIGHTING</b>	RY(LO) green	
<b>COMM</b>		
<b>ATF</b>	tfc 123.2 5NM centred on Bonnyville A/D 2.4NM N 4900 ASL	
<b>PRO</b>	Arr/dep 028° & 221° slope 16%. Rstd to multi-engine heli	
<b>CAUTION</b>	Light poles to SW of heli. Overhead powerlines to NE of heli.	

## BORDEN ON (Heli)

CYBN

<b>REF</b>	N44 16 18 W79 54 45 3SW 10°W UTC-5(4) Elev 729' VTA A5000 F-21	
<b>OPR</b>	DND 705-424-1200 Ext 1381, CSN 270-1381 PPR Mil only ctc Base Ops at 705-424-1200 Ext 1381, CSN 270-1381	
<b>PF</b>	B-1 C-2,3,5,6 D-4	
<b>FLT PLN</b>	NOTAM FILE CYBN	
<b>FIC</b>	London 866-WXBRIEF (Toll free within Canada) or 866-541-4104 (Toll free within Canada & USA)	
<b>MIL</b>	400 Sqn Ops, ltd hrs 705-424-1200 Ext 1403, CSN 270-1403	
<b>WX</b>	WD2 ltd hrs, 705-424-1200 Ext 1449, CSN 270-1449	

# CANADA FLIGHT SUPPLEMENT / GPH 205

Effective 0901Z 20 November 2008 to 0901Z 15 January 2009

## B66 AERODROME/FACILITY DIRECTORY

### BORDEN ON (Heli) (Cont'd)

CCJBN

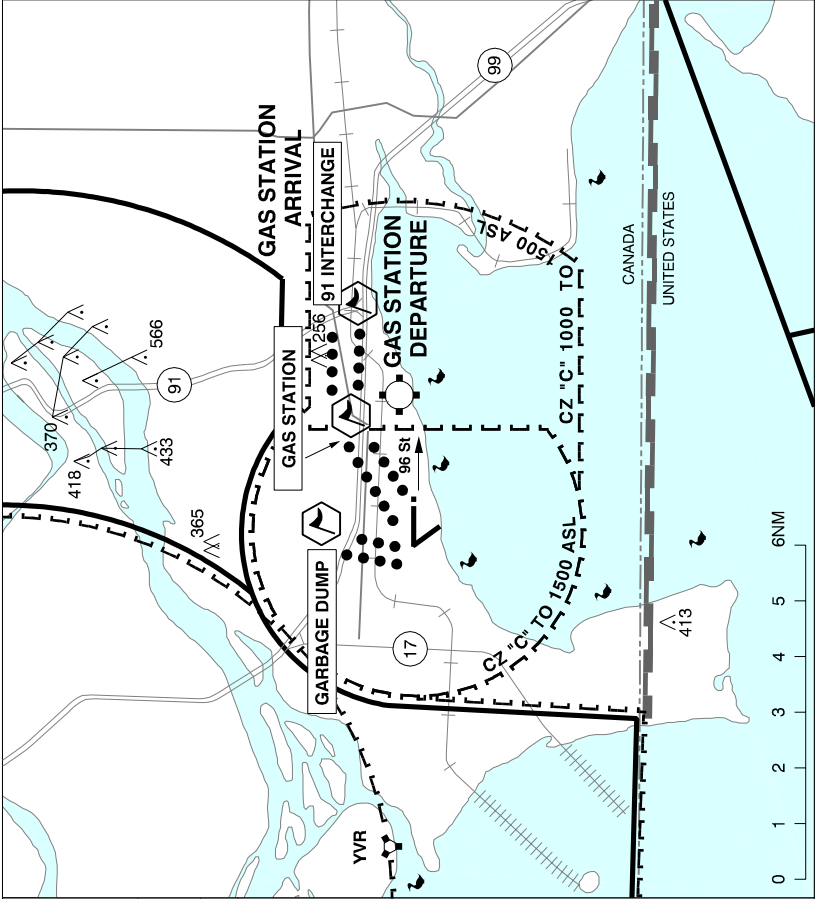
<b>SERVICES</b>	48 hrs PNR 705-424-1200 Ext 1403 CSN 270-1403
<b>FUEL</b>	F-34 & F-37 Ltd hrs
<b>S</b>	1,2 Ltd hrs
<b>ARFF</b>	2 Ltd hrs
<b>MIL ADV</b>	400 Sqn Ops call "zero" FM 40.9 ltd hrs
<b>PAD DATA</b>	100' x 100' asphalt. Ctr of pad N44 16 W79 55. Opr ltd hrs.
<b>RCR</b>	Opr ltd hrs
<b>LIGHTING</b>	Pad-DR (RY (square) HI) ARCAL-118.875 type K
<b>COMM</b>	
<b>MF</b>	tfc 118.875 311.6 5NM 3700 ASL (CAR 602.98)
<b>DRCO</b>	London rdo 126.7
<b>NAV</b>	
<b>VORTAC</b>	YMS 114.5 Ch 92 N44 08 36 W080 08 48 063° 12.8NM to helipad
<b>PRO</b>	A/D clsd to itinerant fixed-wing acft. Extv glider activity 5NM radius to 3000 ASL. Apr-Jun & Sep-Nov. Low lvl Heli flt proh over old hg line/ramp due to fragments on paved surfaces. Heli circuits alt 1200 ASL. When conducting an inst apch and the ceil is less than 1500 AGL, the pilot is responsible for contacting Range Control on FM 49.9 MHz and initiating Check Fire prior to crossing the IF. Aircrews are not to continue past the IF until Range Control confirms that Check Fire is in effect. The pilot will cancel Check Fire when VMC and clear of CYR 502.

### BOSTON BROOK NB

CCJ33

<b>REF</b>	N47 26 55 W67 37 29 9SW 19°W UTC-4(3) Elev 958' A5002 A5003 F-22 LO8 RCAP	
<b>OPR</b>	Irving Oil Transport Ltd 506-632-7777 Reg PPR	
<b>PF</b>	D-1,2,4,5	
<b>FLT PLN</b>	NOTAM FILE CYCL	
<b>FIC</b>	(bil) Québec 866-WXBRIEF or (French) 866-GOMÉTÉO (Toll free within Canada) or 866-541-4105 (Toll free within Canada & USA)	
<b>ACC</b>	Moncton 506-867-7176 or 866-480-8200 Flt Plns by Fax 506-867-7180 & include phone numbers where pilot can be reached prior to dep	
<b>RWY DATA</b>	Rwy 02(023°)/20(203°) 3913x58 chipseal Rwy 02 up 0.4%	
<b>RCR</b>	Opr Aprt maint May-Oct.	
<b>COMM</b>		
<b>ATF</b>	tfc 123.2 5NM 4000 ASL	

**BOUNDARY BAY HELI VFR TERMINAL PROCEDURES CHARTS**



**BOUNDARY BAY  
HELICOPTER ARR/DEP**

● ATIS	● TWR		● GND
	OUTER	INNER	
125.5	127.6	118.1	124.3
O/T TFC 118.1 (MF 3NM)			

**PROCEDURE NOT AUTH OUTSIDE  
TWR HRS OF OPS AND CAR PART  
7 OPS AT NIGHT**

**GAS STATION ARR**  
Report approaching HWY 91 track  
north of HWY 10 to **GAS STATION**.  
Cross **GAS STATION 500'** or below.  
Transmit intentions on Delta Air Park  
123.3 prior to **GAS STATION**.

**GAS STATION DEP**  
Track eastbound S of HWY 10. Not  
above **500'** until **GAS STATION**.  
Transmit intentions on Delta Air Park  
123.3 prior to **GAS STATION** if below  
**1000'**.

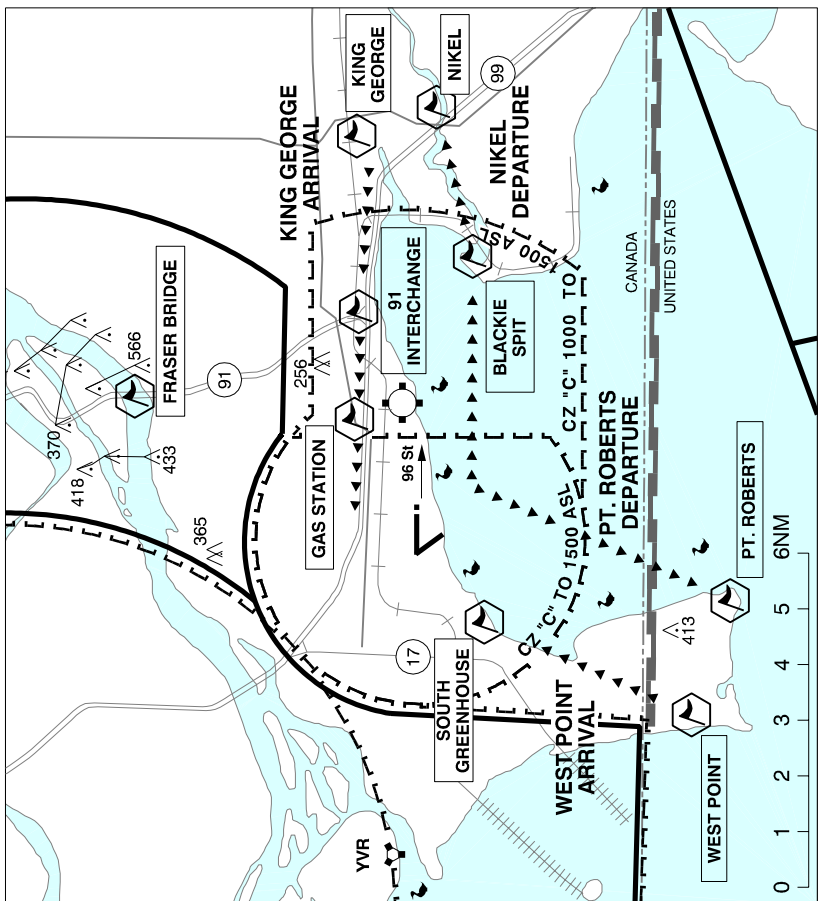
Arr/Dep north or northwest will be  
routed via **GARBAGE DUMP**. Cross  
**HWY 99 500'** or below.

# CANADA FLIGHT SUPPLEMENT / GPH 205

Effective 0901Z 20 November 2008 to 0901Z 15 January 2009

B68 AERODROME/FACILITY DIRECTORY

## BOUNDARY BAY VFR TERMINAL PROCEDURES CHARTS RWY 07 & 12



### BOUNDARY BAY RUNWAY 07/12 ARR/DEP

☉ ATIS	☉ TWR		☉ GND
	OUTER	INNER	
125.5	127.6	118.1	124.3
O/T TFC 118.1 (MF 3NM)			

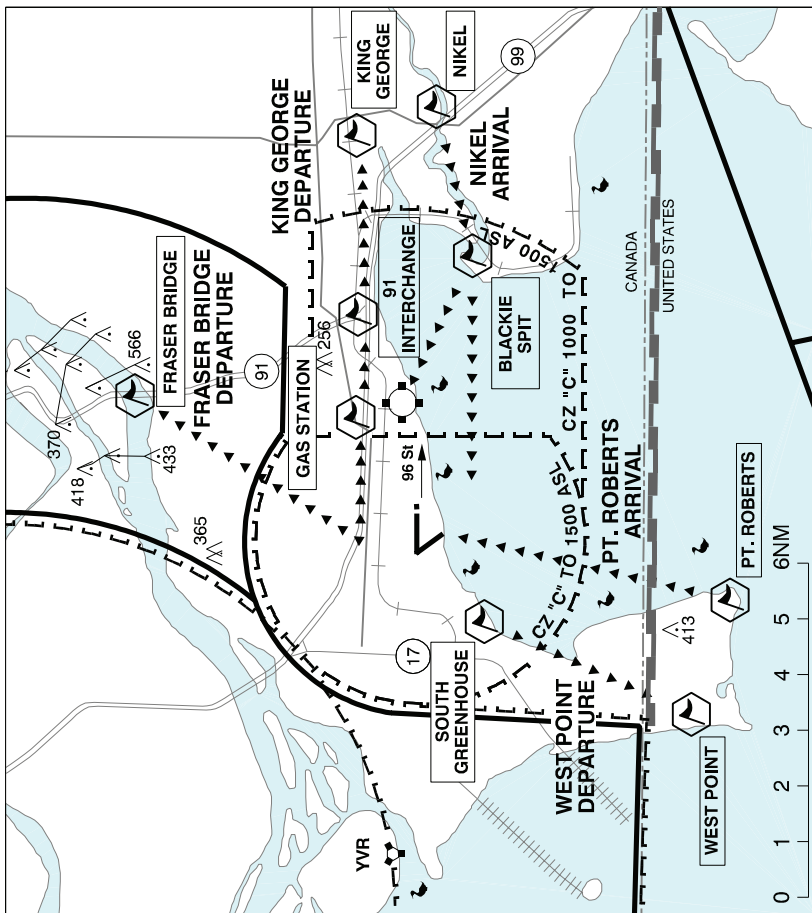
**PROCEDURE NOT AUTH OUTSIDE  
TWR HRS OF OPS AND CAR PART  
7 OPS AT NIGHT**

**KING GEORGE ARR**  
Not below 1500' until W of  
**KING GEORGE**. Not below 1000'  
until W of **GAS STATION**.

**NIKEL DEP**  
Cross abm 96 St 1000' or above.  
All circuits **800 ASL**.



**BOUNDARY BAY VFR TERMINAL PROCEDURES CHARTS RWY 25 & 30**



<b>BOUNDARY BAY RUNWAY 25/30 ARR/DEP</b>			
ATIS	TWR		GND
	OUTER	INNER	
125.5	127.6	118.1	124.3
O/T TFC 118.1 (MF 3NM)			
<b>PROCEDURE NOT AUTH OUTSIDE TWR HRS OF OPS AND CAR PART 7 OPS AT NIGHT</b>			
<b>KING GEORGE DEP</b> Cross GAS STATION 1000' or above Cross KING GEORGE 1500' or above			
<b>FRASER BRIDGE DEP</b> Not above 1200' unless approved			
<b>NIKEL ARR</b> Cross abm 96 St 1000' or above			
All circuits 800 ASL			

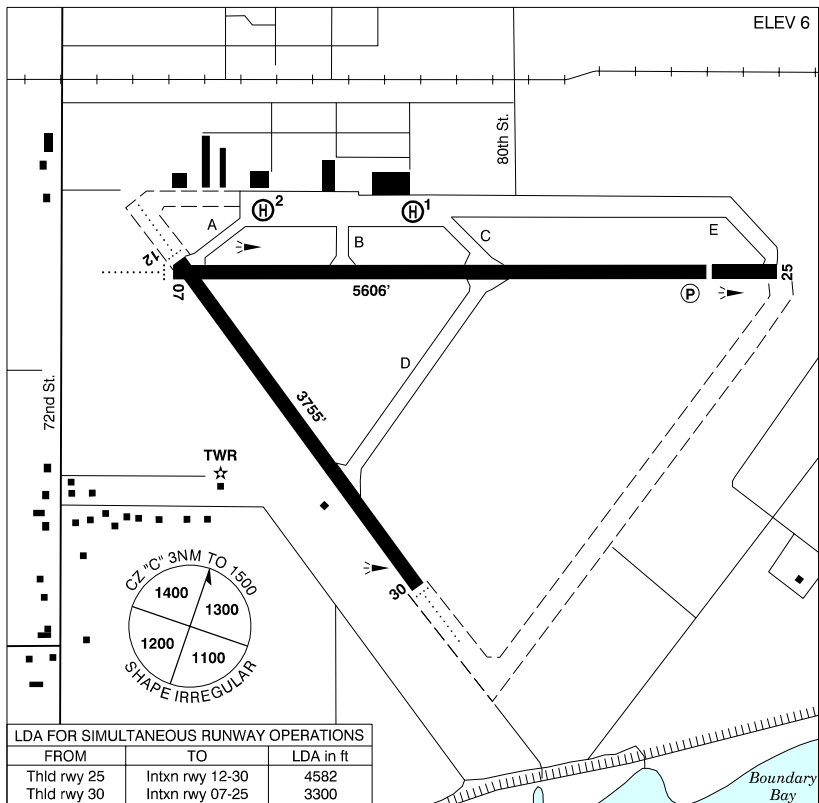
# CANADA FLIGHT SUPPLEMENT / GPH 205

Effective 0901Z 20 November 2008 to 0901Z 15 January 2009

B70 AERODROME/FACILITY DIRECTORY

**BOUNDARY BAY BC**

**CZBB**



<b>REF</b>	N49 04 26 W123 00 27 2.5E 19°E UTC-8(7) Elev 6' VTA A5004 E-15 LO2 T1 CAP HI3
<b>OPR</b>	Alpha Aviation Inc. 604-946-5361 Cert
<b>PF</b>	A-1,2,3,6 C-4,5
<b>CUST</b>	AOE/15 888-226-7277 15-06Z‡ dly
<b>FLT PLN</b>	NOTAM FILE CYVR
<b>FIC</b>	Kamloops 866-WXBRIEF (Toll free within Canada) or 866-541-4101 (Toll free within Canada & USA)
<b>ACC</b>	Vancouver IFR 604-586-4590/4591; IFR tng fits PPR ctc 604-586-4592
<b>PIK</b>	ATB-Unit 48, dur regular hrs of operation.
<b>SERVICES</b>	
<b>FUEL</b>	100LL, JA-1
<b>OIL</b>	All
<b>S</b>	1,2,3,4,5,6
<b>PVT ADV</b>	Bay fuel 122.95 15-03Z‡
<b>RWY DATA</b>	Rwy 12(125°)/30(305°) 3755x100 asphalt Rwy 07(071°)/25(251°) 5606x100 asphalt thld 25 displ 600'
<b>RCR</b>	Opr 1530-05Z‡ PLR/PCN

# CANADA FLIGHT SUPPLEMENT / GPH 205

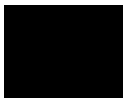
Effective 0901Z 20 November 2008 to 0901Z 15 January 2009

AERODROME/FACILITY DIRECTORY B71

## BOUNDARY BAY BC (Cont'd)

CZBB

<b>LIGHTING</b>	07-AD (non-std 1400') (TE ME), 12-AD (non-std 1400') (TE ME), 25-(TE ME), 30-AD (non-std 1400') (TE ME) When TWR clsd ARCAL-118.1 type K.
<b>COMM</b>	
<b>ATIS</b>	125.5 15-07Z‡ 604-946-0180
<b>GND</b>	124.3 15-07Z‡
<b>TWR</b>	Boundary 118.1 (inner) 127.6 (outer) (V) 15-07Z‡ (emerg only 604-946-0911)
<b>MF</b>	tfc 118.1 07-15Z‡ 3NM 1500 ASL. Excluding that portion which penetrates Delta Heritage Air Park ATF during daylight hrs.
<b>NAV</b>	
<b>NDB</b>	WHITE ROCK WC 332 (L) N49 00 12 W122 45 01 274° 10.6NM to A/D
<b>VORTAC</b>	VANCOUVER YVR 115.9 Ch 106 N49 04 38 W123 08 57 (17') 069° 5.1NM to A/D
<b>RESTRICTIONS</b>	No circuits rwy 07/25 23-07 lcl. Avoid over flying noise sensitive areas unless unable due to crosswind limitations or other safety considerations or as directed by ATC. Ref CARS 602.105 - after dep rwy 25 turn crosswind as rqrd to remain E of railway. Arr rwy 07 turn base E of noise sensitive area. Propeller driven acft over 12,500 lbs. GTOW & all jet acft proh unless approved thru APM. No departures fr taxi B. Heli ops prohibited within 30' vertical & 90' horizontal fr all refuelling eqpt.



# CANADA FLIGHT SUPPLEMENT / GPH 205

Effective 0901Z 20 November 2008 to 0901Z 15 January 2009

B72 AERODROME/FACILITY DIRECTORY

## BOUNDARY BAY BC (Cont'd)

CZBB

<b>PRO</b>	<p>VFR acft with transponder squawk code assigned by ATC. All circuits 800 AGL. Rgt hand circuits rwys 25 &amp; 30 (CAR 602.96). Rwy 12/30 preferred for rgt ops. Pilots to open/close Flt Plns with Kamloops FIC via phone or Kamloops FIC 123.15 when practicable. Procedures for crossing the southern Strait of Georgia within Tml Class C airspace refer to Vancouver Intl VTPC.</p> <p><b>ATS REQUIREMENTS:</b></p> <p>All VFR acft arriving, departing or transiting the Vancouver or Victoria Tower Class C or D airspace require a transponder code.</p> <ul style="list-style-type: none"><li>- All acft departing Vancouver or Victoria Intl (including Water Aerodrome) call Vancouver ACC at 888-987-2633 (888-YVR-CODE) or 604-586-4595 for code assignment at least 30 min prior to flight or file a VFR Flight Plan/Flight Itinerary.</li><li>- All acft arriving Vancouver, Victoria Intl (including Water Aerodrome) or transiting Vancouver or Victoria Control Zones obtain a code from one of the following ATS units: Vancouver Harbour, Nanaimo, Victoria Harbour, Boundary Bay, Langley, Abbotsford or Pitt Meadows, or call Vancouver ACC at 888-987-2633 (888-YVR-CODE) or 604-586-4595.</li><li>- All acft arriving Victoria Intl from a non NAV CANADA site call Vancouver ACC at 888-987-2633 (888-YVR-CODE) or 604-586-4595 for code assignment at least 30 minutes prior to flight or file a VFR Flight Plan/ Flight Itinerary.</li></ul> <p><b>Delta Heritage Air Park 2.5NM E no overflights below 1000 ASL.</b> (See VTPC). <b>Surrey/King George Air park 7.5NM E no overflights below 1500 ASL</b> (See VTPC).</p> <p>Rwy 07 or 12: Arrivals fr E - report KING GEORGE not below 1500 expect KING GEORGE ARRIVAL left downwind rwy 07 or left base rwy 12. Arrivals fr S or W - report WEST POINT expect WEST POINT ARRIVAL rgt base rwy 07 or rgt downwind rwy 12. Departures to E - expect NIKEL DEPARTURE. Departures to W or S - expect POINT ROBERTS DEPARTURE.</p> <p>Rwy 25 or 30: Arrivals fr E - report NIKEL expect NIKEL ARRIVAL straight in rwy 25 or rgt base rwy 30. Arrivals fr S - report POINT ROBERTS expect POINT ROBERTS ARRIVAL left downwind rwy 25 or left base rwy 30. Departures to E - expect KING GEORGE DEPARTURE or FRASER BRIDGE DEPARTURE. Departures to W or S - expect WEST POINT DEPARTURE.</p>
<b>HELI</b>	<p>All helis ctc gnd for departure instructions.</p> <p>GAS STATIONS DEPARTURE Track eastbound S of Hwy 10. Not abv 500 ASL til GAS STATIONS Transmit intentions on Delta Air Park tfc 123.3 prior to Gas Stations if blo 1000. Ctc ZBB Twr after passing AK3 if climbing abv 500.</p> <p>GAS STATIONS ARRIVAL Report approaching HWY 91 track North of Hwy 10 to GAS STATIONS Cross North of Gas Stations 500 ASL or blo. Transmit intentions on Delta Air Park tfc 123.3 prior to Gas Stations.</p> <p>Arrival/Departure north or northwest will be routed via GARBAGE DUMP. Cross Hwy 99 500 ASL or blo.</p>
<b>CAUTION</b>	<p>Extensive bird activity. High density tfc area E of CZ. Extensive flt tng ops.</p>

# CANADA FLIGHT SUPPLEMENT / GPH 205

Effective 0901Z 20 November 2008 to 0901Z 15 January 2009

AERODROME/FACILITY DIRECTORY B73

## BOW ISLAND AB

CEF3

<b>REF</b>	N49 53 W111 20 1NE 15°E UTC-7(6) Elev 2634' A5005 E-16 LO2	
<b>OPR</b>	Town 403-545-2292/2522 Reg	
<b>PF</b>	B-1 C-2,3,4,5	
<b>FLT PLN</b>	NOTAM FILE CYXH	
<b>FIC</b>	Edmonton 866-WXBRIEF (Toll free within Canada) or 866-541-4102 (Toll free within Canada & USA)	
<b>ACC</b>	Edmonton IFR 888-358-7526 or 780-890-8304/8305	
<b>SERVICES</b>	<b>S</b> 1,5	
<b>RWY DATA</b>	Rwy 05(049°)/23(229°) 3000x75 asphalt	
<b>RCR</b>	Opr Ltd maint	
<b>LIGHTING</b>	05-(TE ME), 23-(TE ME) ARCAL-123.2 type K	
<b>COMM</b>	<b>ATF</b> tfc 123.2 5NM 5700 ASL	
<b>CAUTION</b>	Parachuting on aprt 9500 ASL & below dur daylight hrs. Ultra-light acft activity.	

## BOWMANVILLE (MEM HOSP) ON (Heli)

CPL7

<b>REF</b>	N43 54 29 W78 40 50 Adj 11°W UTC-5(4) Elev 328' VTA A5000	
<b>OPR</b>	Bowmanville Mem Hosp 905-623-3331 Cert PPR	
<b>FLT PLN</b>	NOTAM FILE CYOO	
<b>FIC</b>	London 866-WXBRIEF (Toll free within Canada) or 866-541-4104 (Toll free within Canada & USA)	
<b>PAD DATA</b>	86' x 86' asphalt 114' x 114' Rstd max heli length 57.5'	
<b>RCR</b>	Opr	
<b>LIGHTING</b>	DR RY(LO) RF(FL)	
<b>PRO</b>	Single arr/dep path 360° fr heli. Rstd to multi-engine heli only.	

# CANADA FLIGHT SUPPLEMENT / GPH 205

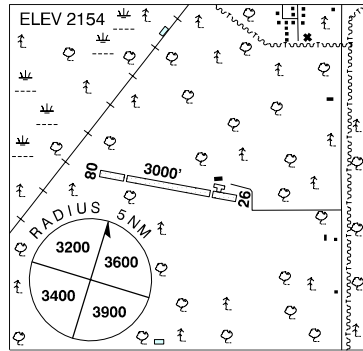
Effective 0901Z 20 November 2008 to 0901Z 15 January 2009

B74 AERODROME/FACILITY DIRECTORY

## BOYLE AB

CFM7

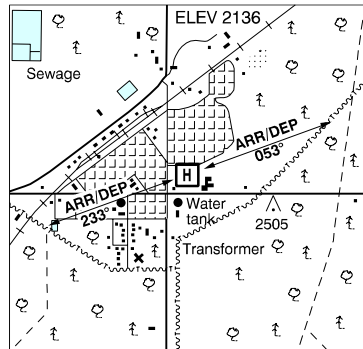
<b>REF</b>	N54 34 24 W112 49 12 1S 17°E UTC-7(6) Elev 2154' A5015 E-15 E-16
<b>OPR</b>	Village of Boyle 780-689-4083/3643 Reg
<b>PF</b>	A-1,3 C-1,2,4,5
<b>FLT PLN</b>	NOTAM FILE CYEG
<b>FIC</b>	Edmonton 866-WXBRIEF (Toll free within Canada) or 866-541-4102 (Toll free within Canada & USA)
<b>ACC</b>	Edmonton IFR 888-358-7526 or 780-890-8304/8305
<b>SERVICES</b>	
<b>FUEL</b>	100LL(D), JB(D) 780-689-3807
<b>RWY DATA</b>	Rwy 08/26 3000x75 turf Rwy 08 disp 530'. Rwy 26 disp 515'. Opr Ltd maint
<b>RCR</b>	
<b>COMM</b>	
<b>ATF</b>	tfc 123.2 5NM 5200 ASL
<b>CAUTION</b>	Rising terrain & vehicle access road off the E end of rwy.



## BOYLE (HEALTHCARE CENTRE) AB (Heli)

CHJ4

<b>REF</b>	N54 35 W112 48 Adj 17°E UTC-7(6) Elev 2136' A5015 RCAP
<b>OPR</b>	Aspen Regional Health Authority 780-689-3731 Cert PPR
<b>FLT PLN</b>	NOTAM FILE CYEG
<b>FIC</b>	Edmonton 866-WXBRIEF (Toll free within Canada) or 866-541-4102 (Toll free within Canada & USA)
<b>ACC</b>	Edmonton IFR 888-358-7526 or 780-890-8304/8305
<b>PAD DATA</b>	65' dia asphalt/turf Cert for heli 42' overall length.
<b>LIGHTING</b>	RF(FL)
<b>COMM</b>	
<b>ATF</b>	tfc 123.2 5NM 5200 ASL centred on Boyle A/D 1.2NM S.
<b>PRO</b>	Arr/Dep 053° and 233° fr heli. Slope 16%; rstd to multi-engine acft only.
<b>CAUTION</b>	60' antenna mast on hosp roof, 200' SE of pad. 60' antenna twr 350' NE and 190' antenna twr 1970' NE of pad.



# CANADA FLIGHT SUPPLEMENT / GPH 205

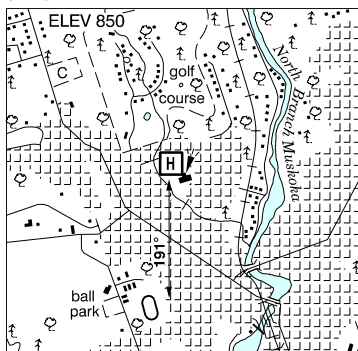
Effective 0901Z 20 November 2008 to 0901Z 15 January 2009

## AERODROME/FACILITY DIRECTORY B75

### BRACEBRIDGE (SOUTH MUSKOKA MEM HOSP) ON (Heli)

CPL2

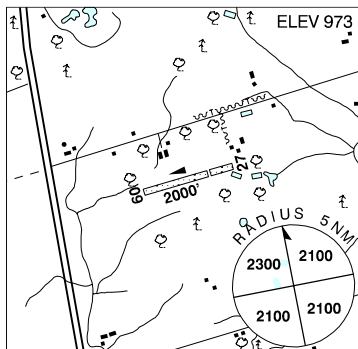
<b>REF</b>	N45 03 W79 19 Adj 11°W UTC-5(4) Elev 850' A5000
<b>OPR</b>	South Muskoka Mem Hosp 705-645-4400 Cert PPR
<b>FLT PLN</b>	NOTAM FILE CYQA
<b>FIC</b>	London 866-WXBRIEF (Toll free within Canada) or 866-541-4104 (Toll free within Canada & USA)
<b>PAD DATA</b>	86' x 86' asphalt 114' x 114' Rstd max heli length 57.3'
<b>RCR</b>	Opr
<b>LIGHTING</b>	DR RY(LO) RF(FL)
<b>PRO</b>	Single arr/dep flt path brg 191° fr heli. Rstd to multi-engine heli only.



### BRADFORD ON

CPM7

<b>REF</b>	N44 08 10 W79 37 44 11°W UTC-5(4) Elev 973' VTA A5000 F21
<b>OPR</b>	E. Maslak 905-775-2205 Reg
<b>PF</b>	C-1,2 D-3,4,5,6
<b>FLT PLN</b>	NOTAM FILE CYKZ
<b>FIC</b>	London 866-WXBRIEF (Toll free within Canada) or 866-541-4104 (Toll free within Canada & USA)
<b>SERVICES</b>	<b>S</b> 4,5
<b>RWY DATA</b>	Rwy 09/27 2000x60 turf Thld 27 displ 500'
<b>RCR</b>	Opr No win maint. Rwy's may be soft in spring.
<b>COMM</b>	<b>ATF</b> tfc 123.2 5NM 4000 ASL
<b>PRO</b>	No tng circuits.
<b>CAUTION</b>	Lgtd twr 1270 ASL (270 AGL) aprx 1NM NNW. Upslope fr thlds 09, 27. Thlds not visible fr each other. Trees aprx 30 AGL at thld 27. Trees 40 AGL N side thld 09. Ultra-light ops. Rwy edge drops off up to 8". Unlgtd 100' twr ½ mile SW. Sum crops occasionally can be up to 7' tall on rwy edge.



# CANADA FLIGHT SUPPLEMENT / GPH 205

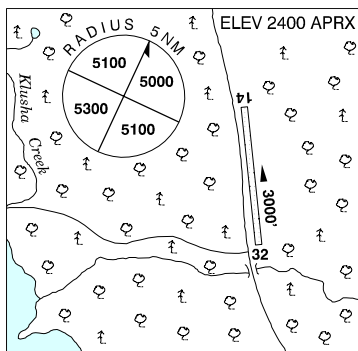
Effective 0901Z 20 November 2008 to 0901Z 15 January 2009

B76 AERODROME/FACILITY DIRECTORY

## BRAEBURN YT

CEK2

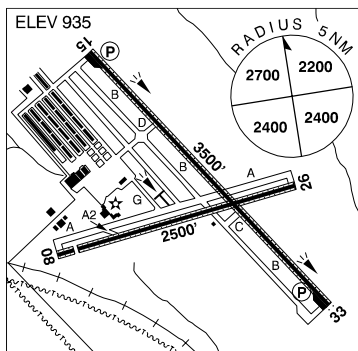
<b>REF</b>	N61 29 04 W135 46 35 Adj 25°E UTC-8(7) Elev 2400' aprx A5028 A5099 D-12
<b>OPR</b>	Govt of Yukon 867-634-2450 or 867-863-5321 Reg
<b>PF</b>	C-1,2,5
<b>FLT PLN</b>	NOTAM FILE CYXY
<b>FIC</b>	Whitehorse 866-WXBRIEF (Toll free within Canada) or 866-541-4107 (Toll free within Canada & USA)
<b>RWY DATA</b>	Rwy 14(149°)/32(329°) 3000x75 gravel
<b>RCR</b>	Opr No maint
<b>COMM</b>	
<b>ATF</b>	tfc 123.2 5NM 5400 ASL
<b>PRO</b>	Rgt hand circuits rwy 14 (CAR 602.96).
<b>CAUTION</b>	Numerous holes in rwy caused by gophers. Sharply rising terrain N & E of rwy. Trees along E side of rwy, 75' fr centreline. Soft sections 200' fr thld 14.



## BRAMPTON ON

CNC3

<b>REF</b>	N43 45 37 W79 52 30 10°W UTC-5(4) Elev 935' VTA A5000 F-21 LO6 T2 CAP
<b>OPR</b>	Brampton Flying 416-798-7928 or 905-838-1400 Cert Opr ltd hrs
<b>PF</b>	B-1,2 C-3,4,5,6
<b>FLT PLN</b>	NOTAM FILE CYBM
<b>FIC</b>	London 866-WXBRIEF (Toll free within Canada) or 866-541-4104 (Toll free within Canada & USA)
<b>ACC</b>	Toronto 905-676-4590/4591/4592 or 888-217-1241
<b>DUAT</b>	Flying Club
<b>SERVICES</b>	
<b>FUEL</b>	100LL
<b>OIL</b>	All
<b>S</b>	2
<b>RWY DATA</b>	Rwy 15(145°)/33(325°) 3500x75 asphalt/turf, centre 40' asphalt Rwy 08(082°)/26(262°) 2500x75 asphalt/turf, centre 40' asphalt Thld 08 displ 191'
<b>RCR</b>	Opr Rwys rstd to acct 12,500 lbs and under. Ltd win maint
<b>LIGHTING</b>	08-(TE ME), 15-(TE HI) AP, 26-(TE ME), 33-AS(TE HI) AP ARCAL-123.3 type K Win PNR
<b>COMM</b>	
<b>ATF</b>	UNICOM ltd hrs O/T tfc 123.3 5NM up to 2500 ASL excluding that portion which penetrates Toronto class C Airspace





# CANADA FLIGHT SUPPLEMENT / GPH 205

Effective 0901Z 20 November 2008 to 0901Z 15 January 2009

AERODROME/FACILITY DIRECTORY B77

## BRAMPTON ON (Cont'd)

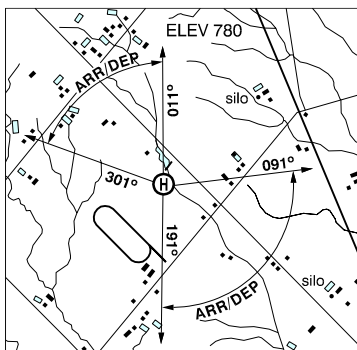
CNC3

<b>PRO</b>	Circuit hgt 1700 ASL. Call opr prior to ARCAL ops when win wx might affect rwy cond. Due to close proximity to Toronto/Lester B. Pearson Intl., there may be periods when ATC will be unable to approve use of the inst apch pro. Helicopters arr/dep via active rwy then taxi to/rr designated helicopter area btwn Golf & Bravo at Alpha. Acft with main gear track 18' and over use rwy 15/33 then turn around bay and backtrack to twy D and apron.
<b>CAUTION</b>	Painted & lgtd twr 1696 ASL (400 AGL) aprx 4NM WNW. Narrow twys (18') exc twy D (24').

## BRAMPTON (NATIONAL "D") ON (Heli)

CPC4

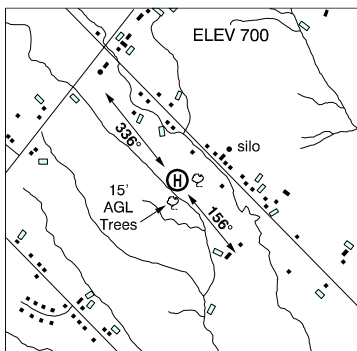
<b>REF</b>	N43 50 00 W79 42 03 8NE 10°W UTC-5(4) Elev 780' VTA A5000
<b>OPR</b>	National Helicopter Inc. 905-893-2727 Reg PPR
<b>PF</b>	B-1 C-2,3,4,5,6
<b>FLT PLN</b>	NOTAM FILE CYBM
<b>FIC</b>	London 866-WXBRIEF (Toll free within Canada) or 866-541-4104 (Toll free within Canada & USA)
<b>PAD DATA</b>	65' x 65' concrete/asphalt 85' x 85' Rstd max heli length 43.3'
<b>LIGHTING</b>	RY (FH)
<b>PRO</b>	Arr/dep btwn 301°-011° & 091°-191° fr heli.



## BRAMPTON (NATIONAL "P") ON (Heli)

CPM2

<b>REF</b>	N43 48 47 W79 41 59 7NE 10°W UTC-5(4) Elev 700' VTA A5000
<b>OPR</b>	National Helicopter Inc. 905-893-2727 Reg PPR
<b>PF</b>	B-1 C-2,3,4,5,6
<b>FLT PLN</b>	NOTAM FILE CYBM
<b>FIC</b>	London 866-WXBRIEF (Toll free within Canada) or 866-541-4104 (Toll free within Canada & USA)
<b>PAD DATA</b>	55' x 65' concrete/asphalt 75' x 75' Rstd max heli length 36.6'
<b>LIGHTING</b>	RF (FH)
<b>PRO</b>	Arr/dep paths brg 336° & 156° fr heli.



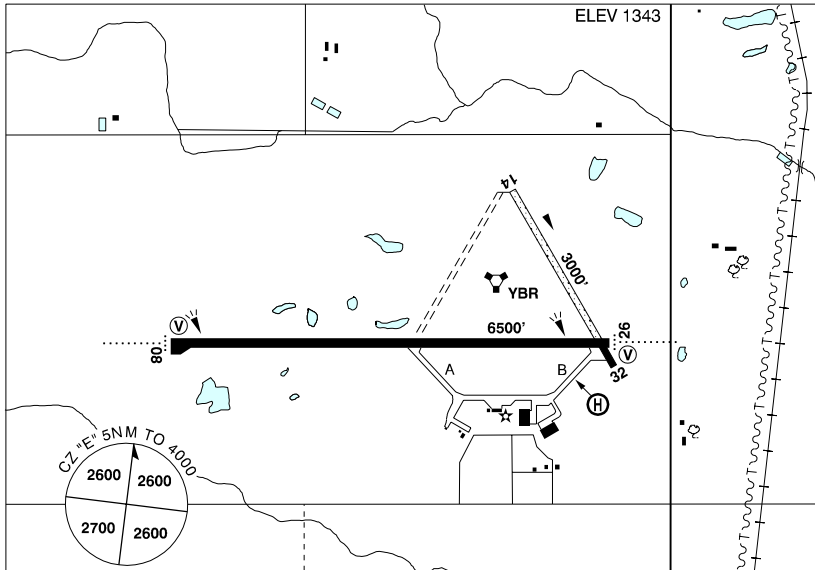
# CANADA FLIGHT SUPPLEMENT / GPH 205

Effective 0901Z 20 November 2008 to 0901Z 15 January 2009

B78 AERODROME/FACILITY DIRECTORY

## BRANDON MUNI MB

CYBR



<b>REF</b>	N49 54 36 W99 57 07 4N 7°E UTC-6(5) Elev 1343' A5007 E-16 E-17 LO4 HI4 CAP
<b>OPR</b>	Muni 204-729-2166 Cert
<b>PF</b>	A-1 C-2,3,4,5,6
<b>CUST</b>	AOE/15 888-226-7277 15-23Z‡
<b>FLT PLN</b>	NOTAM FILE CYBR
<b>FIC</b>	Winnipeg 866-WXBRIEF (Toll free within Canada) or 866-541-4103 (Toll free within Canada & USA)
<b>WX</b>	METAR H24. TAF H24, issue times: 00, 06, 12, 18Z.
<b>PIK</b>	Brandon Flying Club, 14-23Z‡.
<b>SERVICES</b>	Call out chg may be levied for one or more svc
<b>FUEL</b>	100LL, JA-1 14-23Z‡ O/T call out chg
<b>OIL</b>	All
<b>S</b>	1,2,3,4 (ltd),5,6
<b>SUP FL</b>	D-Ice
<b>JASU</b>	CE16
<b>PVT ADV</b>	Brandon Flight Centre 122.95 204-728-7691 O/T 204-724-3304
<b>RWY DATA</b>	Rwy 08(083°)/26(263°) 6500x150 asphalt Rwy 14(143°)/32(323°) 3000x60 treated gravel/asphalt First 438' rwy 32 asphalt
<b>APRON</b>	180° power turns on tml apron ltd to acft less than 75,000 lbs gr wt.
<b>RCR</b>	Opr Ltd win maint rwy 14/32. Rwy 14/32 rstd to acft under 12,000 lbs. A/D maint (DT11-01Z) Mon-Fri, May 1-Sep 30 exc hols; 12-02Z‡ Mon-Fri, 13-21Z‡ Sat & Sun, Oct 1-Apr 30 exc hols. CRFI, PLR/PCN
<b>LIGHTING</b>	08-AD (non-std 2200') (TE HI) V2, 26-AD(TE HI) V2

# CANADA FLIGHT SUPPLEMENT / GPH 205

Effective 0901Z 20 November 2008 to 0901Z 15 January 2009

AERODROME/FACILITY DIRECTORY B79

## BRANDON MUNI MB (Cont'd)

CYBR

<b>COMM</b>	<p><b>RADIO</b> 122.1 248.3 (E) (emerg only 204-728-7169)</p> <p><b>RCO</b> Winnipeg 126.7 (FISE)</p> <p><b>MF</b> rdo 122.1 248.3 5NM 4000 ASL (CAR 602.98)</p> <p><b>PAL</b> Winnipeg Ctr 132.25 285.4</p> <p><b>VDF</b> 122.1</p>
<b>NAV</b>	<p><b>NDB</b> BRANDON BR 233 (L) N49 54 29 W100 04 25 083° 4.2NM to thld 08</p> <p><b>VORTAC</b> YBR 113.8 Ch 85 N49 54 36 W99 56 44 (1381') at A/D</p>
<b>PRO</b>	<p>Rgt hand circuits rwy 26 (CAR 602.96). Periodic extv glider ops to 4000 MSL. Gliders &amp; tow acft opr fr infield S of rwy 08/26. Glider &amp; tow acft circuits S of rwy 08/26. Rgt hand circuits rwy 32 (CAR 602.96). Gliders &amp; tow acft opr fr infield W of rwy 14/32. Glider &amp; tow acft circuits W of rwy 14/32. Acft inbd fr the S may be requested to rpt crossing the Trans Canada Hwy.</p>
<b>CAUTION</b>	<p>Hydro P-lines 154 AGL unlgtd 6000' E of thld 26. Oslc parajump activity within 1.5NM of A/D to 14,000 ASL. Hi ints lgt oprg dusk to dawn fr hotel roof at N49 49 56 W99 57 40 (4.7NM S A/D). Beams projecting upward. Hi ints lgt may create temporary effects to vision.</p>

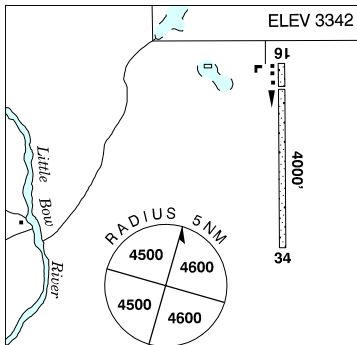
## BRANDON FSS - RCO

Dauphin 122.3 297.0 (RAAS) 12-02Z± (N51 06 W100 04)

## BRANT (DIXON FARM) AB

CEX9

<b>REF</b>	N50 25 10 W113 32 27 6SSW 16°E UTC-7(6) Elev 3342' A5005 E-15 E-16
<b>OPR</b>	J.S. Dixon 403-684-3656 Reg PPR
<b>FLT PLN</b>	NOTAM FILE CYBW
<b>FIC</b>	Edmonton 866-WXBRIEF (Toll free within Canada) or 866-541-4102 (Toll free within Canada & USA)
<b>RWY DATA</b>	Rwy 16/34 4000x75 turf Thld 16 displ 500'
<b>RCR</b>	Opr Ltd maint. May be clsd dur spring break-up.
<b>COMM</b>	
<b>ATF</b>	tfc 123.2 5NM 6400 ASL



## CANADA FLIGHT SUPPLEMENT / GPH 205

Effective 0901Z 20 November 2008 to 0901Z 15 January 2009

B80 AERODROME/FACILITY DIRECTORY

### BRANTFORD ON

CYFD

<b>REF</b>	N43 07 53 W80 20 33 4WSW 10°W UTC-5(4) Elev 815' VTA A5000 F-21 LO6 HI5 CAP	
<b>OPR</b>	City 519-753-2521/1241 Reg	
<b>PF</b>	B-1,2 C-3,4,5,6	
<b>CUST</b>	AOE/15 888-226-7277 PNR	
<b>FLT PLN</b>	NOTAM FILE CYFD	
<b>FIC</b>	London 866-WXBRIEF (Toll free within Canada) or 866-541-4104 (Toll free within Canada & USA)	
<b>SERVICES</b>	Svc avbl 14-22Z aprx O/T PNR	
<b>FUEL</b>	100LL, JA-1 FSII, SP	
<b>OIL</b>	All	
<b>S</b>	1,2,3,4,5,6	
<b>RWY DATA</b>	Rwy 05(052°)/23(232°) 5000x100 asphalt Rwy 11(108°)/29(288°) 2600x100 asphalt Rwy 17(174°)/35(354°) 2600x100 asphalt	
<b>TWY</b>	Twy C, D & E rstd day use only.	
<b>RCR</b>	Opr No win maint twys C, D, E.	
<b>LIGHTING</b>	05-AS(TE ME)V1, 11-(TE LO), 17-(TE LO), 23-(TE ME)V1, 29-(TE LO), 35-(TE LO) ARCAL-122.825 type K rwy 05-23 only.	
<b>COMM</b>		
<b>ATF</b>	UNICOM ltd hrs O/T tfc 122.825 5NM 3800 ASL	
<b>NAV</b>		
<b>NDB</b>	FD 207 (L) N43 04 24 W80 24 58 052° 4.5NM to A/D	

### BRIDGEWATER / DAYSPRING AIRPARK NS

CDY6

<b>REF</b>	N44 22 55 W64 27 27 1N 19°W UTC- 4(3) Elev 150' VTA A5003 F-22	
<b>OPR</b>	K Bennett 902-543-4388 902-530-2338/902-521-1441 Reg PNR	
<b>FLT PLN</b>	NOTAM FILE CYHZ	
<b>FIC</b>	Halifax 866-WXBRIEF or (French) 866-GOMÉTÉO (Toll free within Canada) or 866-541-4106 (Toll free within Canada & USA)	
<b>RWY DATA</b>	Rwy 15/33 1728x30 gravel/asphalt mix	
<b>RCR</b>	Opr Ltd win maint	
<b>COMM</b>		
<b>ATF</b>	tfc 123.2 5NM 3200 ASL	
<b>CAUTION</b>	Abrupt drop-off thld rwy 33. High trees and powerline on apch to rwy 15. Bridgewater (South Shore Regional hosp) heli 2.3 NM W of A/D	

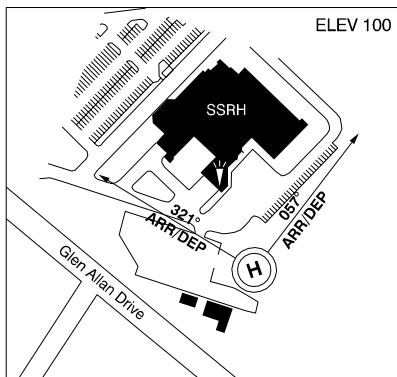
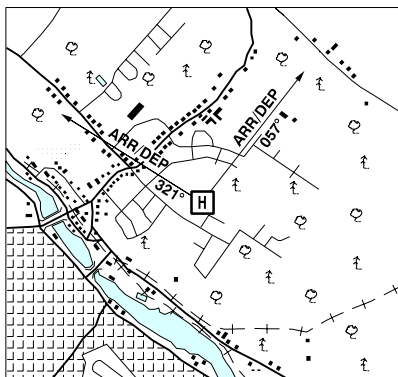
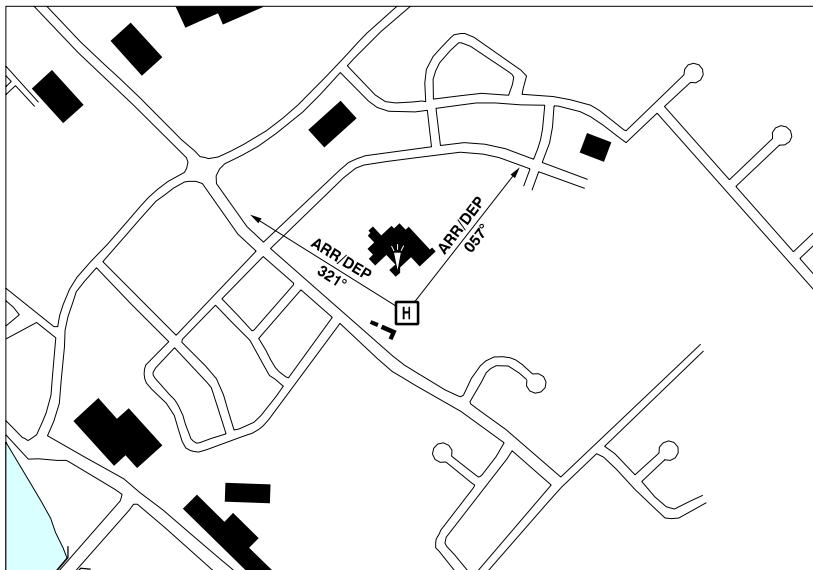
# CANADA FLIGHT SUPPLEMENT / GPH 205

Effective 0901Z 20 November 2008 to 0901Z 15 January 2009

AERODROME/FACILITY DIRECTORY B81

## BRIDGEWATER (SOUTH SHORE REGIONAL HOSP) NS (Heli)

CDT6



<b>REF</b>	N44 22 56 W64 30 35 Adj N 19°W UTC-4(3) Elev 100' A5003
<b>OPR</b>	South Shore Regional Hosp 902-543-4603 Cert PPR
<b>FLT PLN</b>	NOTAM FILE CYHZ
<b>FIC</b>	Halifax 866-WXBRIEF or (French) 866-GOMÉTÉO (Toll free within Canada) or 866-541-4106 (Toll free within Canada & USA)
<b>ACC</b>	Moncton 506-867-7176 or 866-480-8200 Flt Plns by Fax 506-867-7180 & include phone numbers where pilot can be reached prior to dep
<b>PAD DATA</b>	79' dia asphalt (rstd to twin engine heli with max overall length of 52.5').
<b>LIGHTING</b>	FH
<b>COMM</b>	
<b>ATF</b>	tfc 123.2 5NM 3100 ASL

# CANADA FLIGHT SUPPLEMENT / GPH 205

Effective 0901Z 20 November 2008 to 0901Z 15 January 2009

B82 AERODROME/FACILITY DIRECTORY

## BRIDGEWATER (SOUTH SHORE REGIONAL HOSP) NS (Heli) (Cont'd)

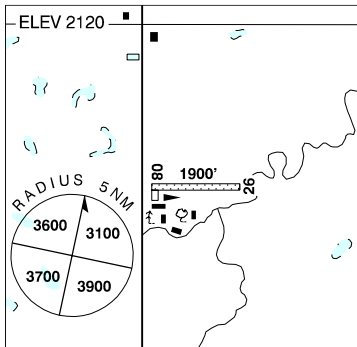
CSD6

<b>PRO</b>	Arr/dep 057° & 321° fr heli.
<b>CAUTION</b>	Training area around heliport up to 3000 ASL, see Liverpool VTPC-Training area.

## BRIERCREST SOUTH SK

CBS7

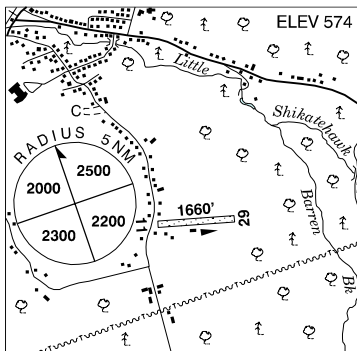
<b>REF</b>	N50 03 59 W105 18 02 8SSW 12°E UTC-6 Elev 2120' A5006 E-16
<b>OPR</b>	Randy Thiele 306-799-4451 Reg
<b>PF</b>	B-1
<b>FLT PLN</b>	NOTAM FILE CYQR
<b>FIC</b>	Edmonton 866-WXBRIEF (Toll free within Canada) or 866-541-4102 (Toll free within Canada & USA)
<b>RWY DATA</b>	Rwy 08(078°)/26(258°) 1900x45 turf
<b>RCR</b>	Opr No win maint
<b>COMM</b>	
<b>ATF</b>	tfc 123.2 5NM 5200 ASL



## BRISTOL NB

CDA6

<b>REF</b>	N46 27 34 W67 33 53 Adj S 19°W UTC-4(3) Elev 574' A5002 A5003 F-22
<b>OPR</b>	F. Allen 506-392-6235/5574 Reg PNR
<b>PF</b>	B-1 C-2,3,4,5
<b>FLT PLN</b>	NOTAM FILE CYFC
<b>FIC</b>	Halifax 866-WXBRIEF or (French) 866-GOMÉTÉO (Toll free within Canada) or 866-541-4106 (Toll free within Canada & USA)
<b>ACC</b>	Moncton 506-867-7176 or 866-480-8200 Flt Plns by Fax 506-867-7180 & include phone numbers where pilot can be reached prior to dep
<b>RWY DATA</b>	Rwy 11/29 1660x50 turf
<b>RCR</b>	Opr Ltd win maint
<b>COMM</b>	
<b>ATF</b>	tfc 122.8 5NM 3500 ASL
<b>PRO</b>	Rgt hand circuits rwy 29 (CAR 602.96).
<b>CAUTION</b>	Hi trees on apch rwy 11.



# CANADA FLIGHT SUPPLEMENT / GPH 205

Effective 0901Z 20 November 2008 to 0901Z 15 January 2009

AERODROME/FACILITY DIRECTORY B83

## BROCHET MB

CYBT

<b>REF</b>	N57 53 22 W101 40 45 1W 9°E UTC-6(5) Elev 1131' A5024 D-13 LO1 CAP	
<b>OPR</b>	Govt of Manitoba 204-677-6722 Cert	
<b>PF</b>	A-1 C-4 Tml bldg opr 13-18Z†, 19-2115Z† Mon-Fri, clsd Sat, Sun & hols	
<b>FLT PLN</b>	NOTAM FILE CYYL	
<b>FIC</b>	Winnipeg 866-WXBRIEF (Toll free within Canada) or 866-541-4103 (Toll free within Canada & USA)	
<b>RWY DATA</b>	Rwy 03(032°)/21(212°) 3500x90 crushed rock	
<b>RCR</b>	APM 204-323-2005 13-18Z†, 19-2115Z† Mon-Fri exc hols O/T 204-323-2121	
<b>LIGHTING</b>	03-(TE LO), 21-(TE LO) ARCAL-122.8 type J (see CAUTION).	
<b>COMM</b>	<b>ATF</b> UNICOM ltd hrs O/T tfc 122.8 5NM 4200 ASL	
<b>NAV</b>	<b>NDB</b> 4Q 347 (M) N57 53 10 W101 40 36 at A/D Pvt	
<b>CAUTION</b>	Extv bird activity Apr-Oct. Rwy edge lgt installed higher than std (aprx 27 inches high loc 5' outside rwy edge).	

## BROCKVILLE (MEDICAL) ON (Heli)

CPH8

<b>REF</b>	N44 36 20 W75 40 53 Adj 14°W UTC-5(4) Elev 302' A5000 A5002	
<b>OPR</b>	Brockville & District Ambulance Service 613-345-8321 Cert PPR	
<b>FLT PLN</b>	NOTAM FILE CYGK	
<b>FIC</b>	London 866-WXBRIEF (Toll free within Canada) or 866-541-4104 (Toll free within Canada & USA)	
<b>PAD DATA</b>	95' x 95' asphalt 125' x 125' Rstd max heli length 63.3'	
<b>RCR</b>	Opr	
<b>LIGHTING</b>	DR(FL) ARCAL-123.2 type J	
<b>COMM</b>	<b>ATF</b> UNICOM ltd hrs O/T tfc 123.0 5NM centred on Brockville A/D 3400 ASL	
<b>PRO</b>	Arr/dep 072° fr heli.	

# CANADA FLIGHT SUPPLEMENT / GPH 205

Effective 0901Z 20 November 2008 to 0901Z 15 January 2009

B84 AERODROME/FACILITY DIRECTORY

## BROCKVILLE-THOUSAND ISLANDS REGIONAL TACKABERRY ON

CNL3

<b>REF</b>	N44 38 22 W75 45 01 4.8NW 14°W UTC-5(4) Elev 402' A5000 A5002 F-21 LO6 LO7 T2 CAP	
<b>OPR</b>	Brock Air Services Ltd 613-342-4511 Reg	
<b>PF</b>	B-1 C-2,3,4,5,6	
<b>FLT PLN</b>	NOTAM FILE CYGK	
<b>FIG</b>	London 866-WXBRIEF (Toll free within Canada) or 866-541-4104 (Toll free within Canada & USA)	
<b>WX</b>	AWOS 315-393-8982 (see COMM).	
<b>SERVICES</b>	Opr 1130-2030Z± Mon-Sun, after hrs Page 866-340-2076	
<b>FUEL</b>	100LL, JA-1, MG-4	
<b>OIL</b>	15W50	
<b>S</b>	4,5,6	
<b>RWY DATA</b>	Rwy 04(044°)/22(224°) 4500x90 asphalt Rwy 16(161°)/34(341°) 2206x75 turf	
<b>RCR</b>	Opr No win maint rwy 16/34	
<b>LIGHTING</b>	04-AS(TE LO) AP, 22-AK(TE LO) AP ARCAL-123.3 type K (All A/D lgt exc MALSF) MALSF-123.5 type K.	
<b>COMM</b>		
<b>ATF</b>	UNICOM (AU) ltd hrs O/T t/c 123.0 5NM 3400 ASL	
<b>ARR</b>	(bil) Montréal Ctr 134.675 231.95	
<b>DEP</b>	(bil) Montréal Ctr 134.675 231.95	
<b>AWOS</b>	118.525 (at Ogdensburg Intl)	
<b>NAV</b>		
<b>NDB</b>	BROCKVILLE 3B 391 (L) N44 42 05 W75 42 00 224° 3.9NM to A/D Pvt	
<b>CAUTION</b>	Wildlife frequently on rwys. Possible win main eqpt on rwy outside ops hrs. Snow clearing may be conducted after hrs.	

## BROCKWAY NB

CCX3

<b>REF</b>	N45 34 W67 06 4NE 19°W UTC-4(3) Elev 300' A5003 F-22	
<b>OPR</b>	N.B. Dept of Natural Resources 506-778-6672 (sum), 506-453-2530 (win) Reg PNR	
<b>PF</b>	D-2,4,5	
<b>FLT PLN</b>	NOTAM FILE CYFC	
<b>FIG</b>	Halifax 866-WXBRIEF or (French) 866-GOMÉTÉO (Toll free within Canada) or 866-541-4106 (Toll free within Canada & USA)	
<b>ACC</b>	Moncton 506-867-7176 or 866-480-8200 Flt Plns by Fax 506-867-7180 & include phone numbers where pilot can be reached prior to dep	
<b>RWY DATA</b>	Rwy 04/22 4000x75 treated gravel	
<b>RCR</b>	Opr No win maint	



# CANADA FLIGHT SUPPLEMENT / GPH 205

Effective 0901Z 20 November 2008 to 0901Z 15 January 2009

AERODROME/FACILITY DIRECTORY B85

## BROCKWAY NB (Cont'd)

CX33

<b>COMM</b>	<b>ATF</b> tfc 123.2 5NM 3300 ASL
<b>CAUTION</b>	Hi trees on both apchs.

## BROMONT QC

CZBM

<b>REF</b>	N45 17 27 W72 44 29 3.4WSW 16°W UTC-5(4) Elev 375' VTA A5002 F-21 LO6 LO8 HI5 CAP	
<b>OPR</b>	Régie Aéroportuaire Régionale des Cantons de l'Est 450-534-2325 Fax 450-534-0042 Cert	
<b>PF</b>	A-1 (avbl H24) 2,6 (aprt ops hrs) C-3,4,5	
<b>CUST</b>	AOE/15 888-226-7277 13-2130Z± Mon-Fri exc hols	
<b>FLT PLN</b>	(bil) NOTAM FILE CYUL	
<b>FIC</b>	Québec 866-GOMÉTÉO or 866-WXBRIEF (Toll free within Canada) or 866-541-4105 (Toll free within Canada & USA)	
<b>ACC</b>	Montréal 514-633-3211 or 800-633-1353, all Flt Plns, IFR tng flts PPR. Flt Plns by Fax at 514-633-2877 & include phone numbers where pilot can be reached prior to dep.	
<b>PIK</b>	Régie Aéroportuaire Régionale des Cantons de l'Est, Lobby room #003, 12-02Z± O/T O/R.	
<b>SERVICES</b>	Chg may be levied for more svcs	
<b>FUEL</b>	100LL, JA-1, SP, HPR	
<b>OIL</b>	All	
<b>S</b>	1,2,3,4,5,6 12-02Z±	
<b>JASU</b>	CE-14	
<b>PVT ADV</b>	Petro-T 122.15	
<b>RWY DATA</b>	Rwy 05L(053°)/23R(233°) 5000x100 asphalt Rwy 23R down 0.6%. Rwy 05R/23L 3200x320 turf/snow	
<b>RCR</b>	Opr 12-02Z± O/T PNR Rwy 05R/23L No win maint	
<b>LIGHTING</b>	05L-AD(non-std 2600') (T LO) P2, 23R-(T LO) P2 ARCAL-122.15 type J	
<b>COMM</b>	(bil)	
<b>CLNC DEL</b>	Prior dep pilots must ctc Québec FIC for IFR clnc at 866-GOMÉTÉO or 866-WXBRIEF	
<b>MF/ATF</b>	UNICOM (AU) 12-02Z± O/T tfc 122.15 5NM 3400 ASL (CAR 602.98)	
<b>NAV</b>		
<b>NDB</b>	ZBM 343 (L) N45 14 27 W72 47 47 054° 3.2NM to thld rwy 05L	
<b>DME</b>	I6R 110.7 Ch 44 N45 17 52 W72 43 59 at A/D Pvt Unmonitored when unicom clsd	
<b>LOC</b>	I6R 110.7 (rwy 05L-23R) Unmonitored when unicom clsd	
<b>PRO</b>	<b>Circuits:</b> Rgt hand circuits rwy 05R & 23R (CAR 602.96). Do not overfly airport during glider ops. <b>Tow Aircraft</b> - Left hand circuits rwy 23R, Rgt hand circuits rwy 05L (CAR 602.96). <b>Glider Ops</b> - All glider ops are conducted on the Mont Bromont side. <b>Rwy:</b> Turf rwy 05R/23L rstd to glider ops only.	
<b>CAUTION</b>	<b>Paradrop:</b> Paradrop activities aprx 10NM W. <b>Wildlife:</b> Possibility of deer on rwy.	

# CANADA FLIGHT SUPPLEMENT / GPH 205

Effective 0901Z 20 November 2008 to 0901Z 15 January 2009

B86 AERODROME/FACILITY DIRECTORY

## BROOKS AB

CYBP

<b>REF</b>	N50 38 01 W111 55 33 3NNW 16°E UTC-7(6) Elev 2490' A5005 E-16 LO2	
<b>OPR</b>	City 403-362-3333 Reg	
<b>PF</b>	B-1 C-2,3,4,5,6	
<b>FLT PLN</b>	NOTAM FILE CYBP	
<b>FIC</b>	Edmonton 866-WXBRIEF (Toll free within Canada) or 866-541-4102 (Toll free within Canada & USA)	
<b>ACC</b>	Edmonton IFR 888-358-7526 or 780-890-8304/8305	
<b>SERVICES</b>		
<b>FUEL</b>	100LL 403-362-5858 15-01Z† Mon-Sat	
<b>OIL</b>	All	
<b>S</b>	2,3,4,5,6	
<b>RWY DATA</b>	Rwy 12(123°)/30(303°) 2800x75 asphalt Rwy 02(023°)/20(203°) 2400x50 gravel	
<b>RCR</b>	Opr Ltd maint. Snow plowed compacted.	
<b>LIGHTING</b>	12-(TE ME), 30-(TE ME) ARCAL-122.8 type K	
<b>COMM</b>		
<b>ATF</b>	UNICOM ltd hrs O/T tfc 122.8 5NM 5500 ASL	
<b>PAL</b>	Edmonton Ctr 125.05 132.65 229.3	
<b>NAV</b>		
<b>NDB</b>	9X 227 (L) N50 37 56 W111 55 18 at A/D Pvt Unmonitored	
<b>DME</b>	9X 109.8 Ch 35 N50 37 56 W111 55 18 (2499') at A/D Pvt Unmonitored	

## BROOKS (GEN HOSP) AB (Heli)

CFV8

<b>REF</b>	N50 34 07 W111 53 18 Adj 16°E UTC-7(6) Elev 2496' A5005	
<b>OPR</b>	Brooks Gen Hosp 403-501-3232 Cert PPR	
<b>PF</b>	C-1,2,3,4,5,6	
<b>FLT PLN</b>	NOTAM FILE CYBP	
<b>FIC</b>	Edmonton 866-WXBRIEF (Toll free within Canada) or 866-541-4102 (Toll free within Canada & USA)	
<b>PAD DATA</b>	65' dia concrete/turf 85' dia	
<b>LIGHTING</b>	RY(LO) RF(FH) PNR	
<b>COMM</b>		
<b>PAL</b>	Edmonton Ctr 125.05 132.65 229.3	
<b>ATF</b>	UNICOM ltd hrs O/T tfc 122.8 (centred on Brooks A/D 4.1NM NW) 5NM 5500 ASL	
<b>PRO</b>	Single arr/dep path brg 051° fr heli Slope 6%.	

**BROUGHTON ISLAND NT** — See QIKIQTARJUAQ

Sep 09

# CANADA FLIGHT SUPPLEMENT / GPH 205

Effective 0901Z 20 November 2008 to 0901Z 15 January 2009

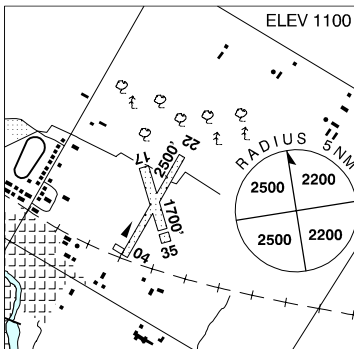
AERODROME/FACILITY DIRECTORY B87

## BRUCE McPHAIL MEM ON — See COBDEN / BRUCE McPHAIL MEM

### BRUSSELS (ARMSTRONG FIELD) ON

CPD4

<b>REF</b>	N43 45 W81 14 Adj E 9°W UTC-5(4) Elev 1100' A5000 F-21
<b>OPR</b>	W.J. Armstrong 519-887-6753 Reg
<b>PF</b>	B-1 C-2,4,5 D-3,6
<b>FLT PLN</b>	NOTAM FILE CYGD
<b>FIC</b>	London 866-WXBRIEF (Toll free within Canada) or 866-541-4104 (Toll free within Canada & USA)
<b>RWY DATA</b>	Rwy 04/22 2500x70 turf Rwy 17/35 1700x120 turf Thld 35 displ 200'
<b>RCR</b>	Opr No win maint
<b>CAUTION</b>	Grove of aprx 75 AGL trees off thld 22 end. 345 AGL twr located 1NM SW.

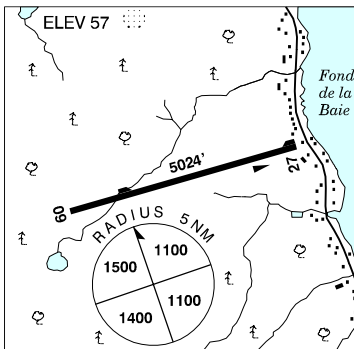


### BRYANT SK — See ESTEVAN / BRYANT

### BUCTOUCHE NB

CDT5

<b>REF</b>	N46 30 34 W64 41 38 1.7SE 19°W UTC-4(3) Elev 57' A5003 F-22 RCAP
<b>OPR</b>	J.D. Irving Woodlands 506-632-7777 Reg PPR
<b>PF</b>	C-1,2,3,4,5
<b>FLT PLN</b>	NOTAM FILE CYQM
<b>FIC</b>	Halifax 866-WXBRIEF or (French) 866-GOMÉTÉO (Toll free within Canada) or 866-541-4106 (Toll free within Canada & USA)
<b>ACC</b>	Moncton 506-867-7176 or 866-480-8200 Flight plans by fax 506-867-7180 & include phone numbers where pilots can be reached prior to dep
<b>RWY DATA</b>	Rwy 09(093°)/27(273°) 5024x74 asphalt. Runway 09 down 0.64%
<b>RCR</b>	Opr No win maint
<b>COMM</b>	
<b>ATF</b>	tfc 123.2 5NM 3100 ASL
<b>CAUTION</b>	50' trees 210' from thld rwy 27. Training areas around A/D, see Moncton VTPC - Training areas.



# CANADA FLIGHT SUPPLEMENT / GPH 205

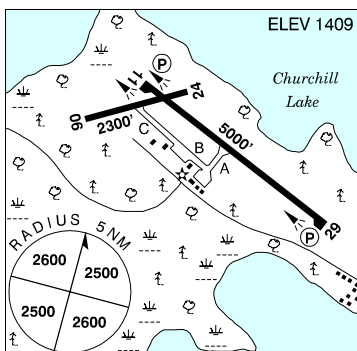
Effective 0901Z 20 November 2008 to 0901Z 15 January 2009

B88 AERODROME/FACILITY DIRECTORY

## BUFFALO NARROWS SK

CYVT

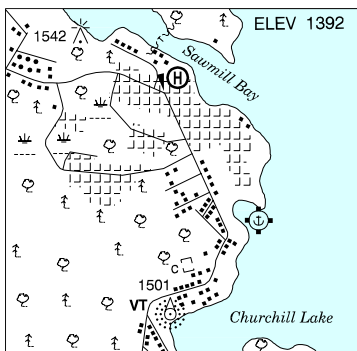
<b>REF</b>	N55 50 31 W108 25 03 2ESE 15°E UTC-6 Elev 1409' A5015 E-16 LO1 HI3 CAP
<b>OPR</b>	Ministry of Hwys & Infrastructure 306-953-3263 Cert
<b>PF</b>	A-1 C-2,3,4,5
<b>FLT PLN</b>	NOTAM FILE CYSF
<b>FIC</b>	Edmonton 866-WXBRIEF (Toll free within Canada) or 866-541-4102 (Toll free within Canada & USA)
<b>WX</b>	METAR 12-04Z. TAF 14-04Z, issue times: 14, 19, 01Z.
<b>SERVICES</b>	Call out chg may be levied for one or more svcs
<b>FUEL</b>	100LL, JA 306-235-4373
<b>OIL</b>	80, 100
<b>S</b>	1,2,4,5,6
<b>PVT ADV</b>	Courtesy Air 129.0 306-235-4373
<b>RWY DATA</b>	Rwy 11(114°)/29(294°) 5000x100 asphalt Rwy 06(062°)/24(242°) 2300x75 asphalt Area Office 306-235-1730 or Opr Ltd hrs
<b>RCR</b>	
<b>LIGHTING</b>	06-(TE ME), 11-(TE ME) P1, 24-(TE ME), 29-(TE ME) P1 ARCAL-122.3 type K
<b>COMM</b>	
<b>RCO</b>	Regina rdo 122.3 (RAAS) 14-02Z Edmonton 123.275 (FISE)
<b>MF</b>	Regina rdo 14-02Z O/T tfc 122.3 5NM 4500 ASL (CAR 602.98)
<b>NAV</b>	
<b>NDB</b>	VT 332 (M) N55 51 15 W108 29 03 092° 1.8NM to A/D
<b>CAUTION</b>	Extv bird activity Apr-Oct.



## BUFFALO NARROWS SK (Helio)

CJC9

<b>REF</b>	N55 52 07 W108 28 57 1N 15°E UTC-6 Elev 1392' A5015
<b>OPR</b>	North Central Helicopters 306-235-2222 Reg PPR
<b>PF</b>	B-1 C-2,3,4,5
<b>FLT PLN</b>	NOTAM FILE CYSF
<b>FIC</b>	Edmonton 866-WXBRIEF (Toll free within Canada) or 866-541-4102 (Toll free within Canada & USA)
<b>PAD DATA</b>	100' x 100'
<b>COMM</b>	
<b>RCO</b>	Regina rdo 122.3 (RAAS) 14-02Z Edmonton 123.275 (FISE)
<b>MF</b>	Regina rdo 14-02Z O/T tfc 122.3 5NM centred on Buffalo Narrows A/D 2.6NM ESE 4500 ASL (CAR 602.98)
<b>UNICOM</b>	122.8
<b>NAV</b>	
<b>NDB</b>	VT 332 (M) N55 51 15 W10829 03 348° 0.9NM to A/D



# CANADA FLIGHT SUPPLEMENT / GPH 205

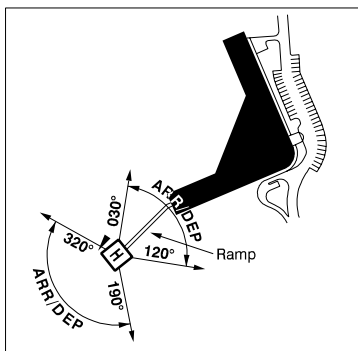
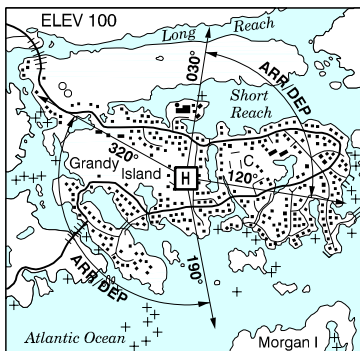
Effective 0901Z 20 November 2008 to 0901Z 15 January 2009

AERODROME/FACILITY DIRECTORY B89

## BURBANK FIELD ON — See SHELburnE / BURBANK FIELD

### BURGOE (CALDER HEALTH CARE CORP) NL (Heli)

CBC9

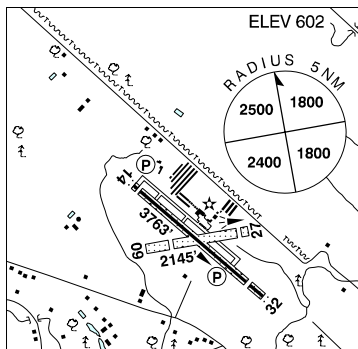


<b>REF</b>	N47 36 47 W57 37 24 Adj S 21°W UTC-31/2(21/2) Elev 100' A5012 F-22
<b>OPR</b>	Calder Health Care Corporation 709-886-3350 Cert PNR
<b>FLT PLN</b>	NOTAM FILE CYJT
<b>FIC</b>	Halifax 866-WXBRIEF or (French) 866-GOMÉTÉO (Toll free within Canada) or 866-541-4106 (Toll free within Canada & USA)
<b>PAD DATA</b>	50' x 50' concrete
<b>RCR</b>	Opr Ltd win maint
<b>COMM</b>	
<b>ATF</b>	tfc 123.2 5NM 3100 ASL
<b>PRO</b>	Arr/dep btwn 030° & 120° and btwn 190° & 320° fr pad.

### BURLINGTON AIRPARK ON

CZBA

<b>REF</b>	N43 26 30 W79 51 01 10°W UTC-5(4) Elev 602' VTA A5000 F-21 LO6 T2 CAP
<b>OPR</b>	Vince Rossi 905-336-4010 (Day), 416-918-7774 (Night) Reg
<b>PF</b>	B-1,2 C-3,4,5,6
<b>FLT PLN</b>	NOTAM FILE CYHM
<b>FIC</b>	London 866-WXBRIEF (Toll free within Canada) or 866-541-4104 (Toll free within Canada & USA)
<b>SERVICES</b>	
<b>FUEL</b>	100LL, JA cardlock dispenser
<b>OIL</b>	65, 80, 100
<b>S</b>	1,2,3,4,5,6
<b>RWY DATA</b>	Rwy 14(141°)/32(321°) 3763x75 asphalt/turf, centre 60' asphalt Thld 14 displ 90'. Thld 32 displ 324'. Rwy 09(090°)/27(270°) 2145x100 turf Thld 09 displ 475'. Thld 27 displ 172'
<b>RCR</b>	Opr 13-23Z† or Spectrum Airways 905-336-4010 No win maint rwy 09/27.
<b>LIGHTING</b>	14-AS(TE LO) AP, 32-AS(TE LO) AP 2600' of rwy lgdt 100' fr thld 14 & 1000' fr thld 32 ARCAL-123.5 type J.



# CANADA FLIGHT SUPPLEMENT / GPH 205

Effective 0901Z 20 November 2008 to 0901Z 15 January 2009

B90 AERODROME/FACILITY DIRECTORY

## BURLINGTON AIRPARK ON (Cont'd)

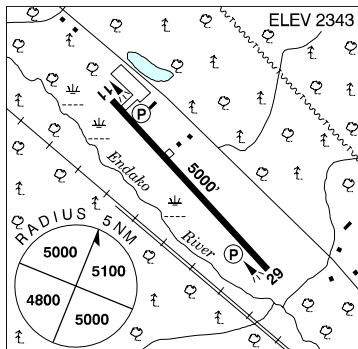
CZBA

<b>COMM</b>	
<b>ATF</b>	UNICOM ltd hrs O/T tfc 123.5 5NM below 2500 ASL
<b>PRO</b>	Circuit hgt 1500' ASL. Rgt hand circuits rwy 27 & 32 (CAR 602.96). As soon as practicable after take-off fr rwy 14 turn left 5° to avoid noise sensitive area. Helicopters follow fixed-wing circuit procedures.
<b>CAUTION</b>	50 ft trees on apch to rwy 32 loc aprx 400' from thld of rwy 32.

## BURNS LAKE BC

CYPZ

<b>REF</b>	N54 22 35 W125 57 05 11NW 22°E UTC-8(7) Elev 2343' A5013 E-15 LO1 CAP
<b>OPR</b>	Aprt Society 250-698-7364, 250-692-0220 Reg
<b>PF</b>	A-1 C-2,5 D-4
<b>FLT PLN</b>	NOTAM FILE CYYD
<b>FIC</b>	Kamloops 866-WXBRIEF (Toll free within Canada) or 866-541-4101 (Toll free within Canada & USA)
<b>WX</b>	LWIS (Pvt) 250-698-7732 (see COMM).
<b>SERVICES</b>	
<b>FUEL</b>	100LL, JA 250-698-7364 or 250-692-0220
<b>OIL</b>	15W50
<b>RWY DATA</b>	Rwy 11(115°)/29(295°) 5000x75 asphalt
<b>RCR</b>	Aprt caretaker 250-698-7364 or Opr.
<b>LIGHTING</b>	11-(TE ME) P1, 29-(TE ME) P1 ARCAL-122.7 type K
<b>COMM</b>	
<b>RCO</b>	Pacific rdo 126.7 (FISE)
<b>ATF</b>	tfc 122.7 5NM 5400 ASL
<b>PAL</b>	Vancouver Ctr 123.875 132.525
<b>LWIS (Pvt)</b>	122.950
<b>CAUTION</b>	Rdo ctl acct opr fr rwy to 500 AGL wknds Mar-Nov.



# CANADA FLIGHT SUPPLEMENT / GPH 205

Effective 0901Z 20 November 2008 to 0901Z 15 January 2009

AERODROME/FACILITY DIRECTORY B91

## BURWASH YT

CYDB

<b>REF</b>	N61 22 14 W139 02 24 2NW 25°E UTC-8(7) Elev 2647' A5028 A5099 D-12 LO5 HI2 CAP	
<b>OPR</b>	Govt of Yukon 867-634-2450 or 867-841-4242/4211 Reg	
<b>PF</b>	A-1 C-2,4,5	
<b>FLT PLN</b>	NOTAM FILE CYDB	
<b>FIG</b>	Whitehorse 866-WXBRIEF (Toll free within Canada) or 866-541-4107 (Toll free within Canada & USA)	
<b>ACC</b>	Edmonton IFR 888-358-7526 or 780-890-8304/8305	
<b>CARS</b>	867-841-4242 Ltd hrs (see COMM)	
<b>WX</b>	METAR dur CARS hrs ops (see COMM). TAF H24, issue times: 00, 06, 12, 18Z. Legacy AWOS (see COMM).	
<b>SERVICES</b>	<b>S</b> 4,5,6	
<b>RWY DATA</b>	Rwy 10(103°)/28(283°) 5005x100 gravel Rwy 28 up 0.86%.	
<b>RCR</b>	CARS, dur CARS hrs ops (see COMM) Ltd maint	
<b>LIGHTING</b>	10-(TE LO) V1, 28-(TE LO) V1 ARCAL-122.1 type J	
<b>COMM</b>	<b>RCO</b> Whitehorse rdo (Beaver Creek) 126.7 (FISE) (Acft may not receive RCO on gnd) <b>MF</b> apt rdo ltd hrs O/T tfc 122.1 5NM 5700 ASL (CAR 602.98) <b>APRT RDO</b> 122.1 (V) (DT 13-01Z) Jun 1-Sep 30; 15-23Z† Oct 1-May 31 <b>Legacy AWOS</b> 128.7 (not avbl dur CARS hrs ops)	
<b>NAV</b>	<b>NDB</b> DB 341 (M) N61 20 25 W138 59 00 296° 2.0NM to A/D Unmonitored when CARS clsd	
<b>CAUTION</b>	Low level wind shear rwy 10 may be encountered due strong winds & rising terrain N side of rwy 10.	

**BUTTONVILLE MUNICIPAL ON** — See TORONTO / BUTTONVILLE MUNICIPAL