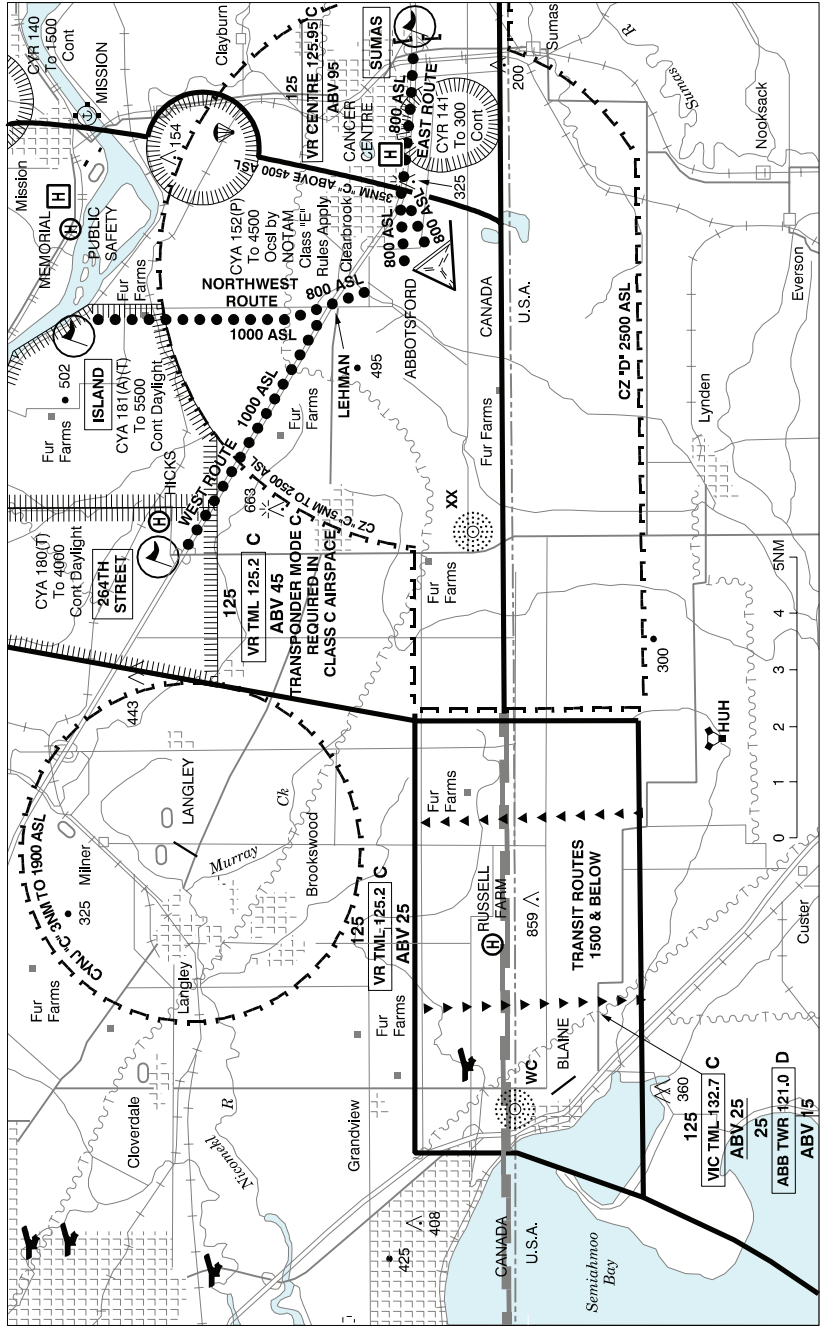


CANADA FLIGHT SUPPLEMENT / GPH 205

Effective 0901Z 20 November 2008 to 0901Z 15 January 2009

AERODROME/FACILITY DIRECTORY B1

ABBOTSFORD HELI VFR TERMINAL PROCEDURES CHART



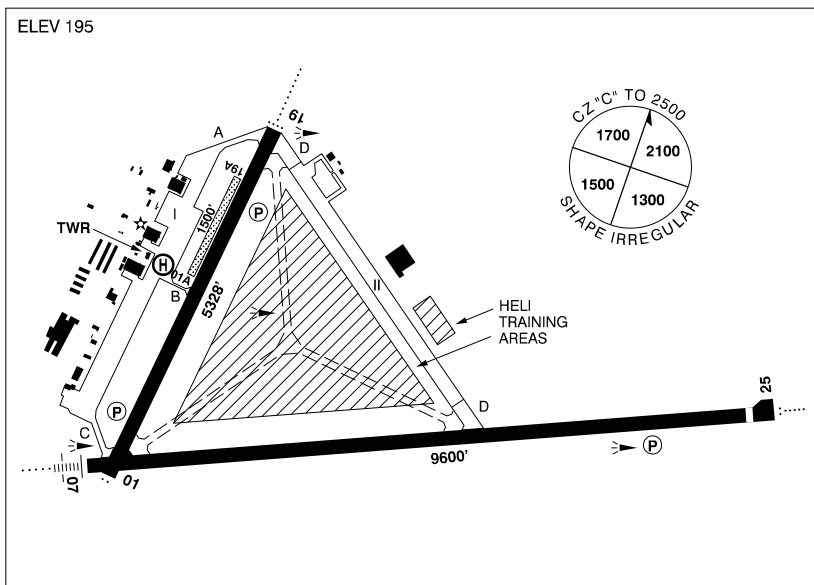
CANADA FLIGHT SUPPLEMENT / GPH 205

Effective 0901Z 20 November 2008 to 0901Z 15 January 2009

B2 AERODROME/FACILITY DIRECTORY

ABBOTSFORD BC

CYXX



REF	N49 01 31 W122 21 38 2.2SW 19°E UTC-8(7) Elev 195' VTA A5004 E-15 LO2 HI3 T1 CAP RCAP OC
OPR	City 604-855-1001 Cert
PF	A-1,2 C-3,4,5,6
CUST	AOE/15 888-226-7277 16-08Z‡
FLT PLN	Pilots are to open/close VFR Flt Pln with Kamloops FIC via phone or Pacific rdo 122.5 when practicable. NOTAM FILE CYXX
FIC	Kamloops 866-WXBRIEF (Toll free within Canada) or 866-541-4101 (Toll free within Canada & USA)
ACC	Vancouver IFR 604-586-4590/4591 or 800-668-1333; IFR tng flts PPR ctc 604-586-4592 or 800-668-1333
WX	METAR H24. TAF H24, issue times: 00, 06, 12, 18Z.
PIK	TWR Main Floor foyer. For door access use MF plus *.
SERVICES	
FUEL	MG-1, 100LL, JA (CON S IP JA-1, FSII) 604-854-1964, 604-853-0224 by truck, 604-854-0887 self-serve VISA & Mastercard only.
OIL	All
S	1,2,3,4,5
ARFF	6 13-07Z‡ Exc for diversions or as an altn aprt, PPR for svcs after hrs, ctc 604-864-5681
JASU	AC/DC 28V 400 amp min
PVT ADV	COPAC 122.95 604-854-1964
MIL CON	COPAC Air svcs Shell 604-854-1964

CANADA FLIGHT SUPPLEMENT / GPH 205

Effective 0901Z 20 November 2008 to 0901Z 15 January 2009

AERODROME/FACILITY DIRECTORY B3

ABBOTSFORD BC (Cont'd)

CYXX

RWY DATA	Rwy 07(067°)/25(247°) 9600x200 asphalt/concrete Thld 25 disp 295'. Rwy 19(187°)/01(007°) 5328x200 asphalt Rwy 19A(187°)/01A(007°) 1500x100 turf
TWY	Twy D uncontrolled.
RCR	Opr Ltd win maint 1415-0630Z‡, O/T 2 hrs PNR call out chg may be levied. CRFI, PLR/PCN. Turf rwy ltd maint, PPR.
LIGHTING	01-AS(TE ME) P2, 07-AN(TE HI), 19-AD(TE ME) P2, 25-AO(TE HI) P3 ARCAL-119.4 type K when twr clsd
COMM	<p>RCO Cranbrook rdo 119.4 (RAAS) 07-15Z‡ Pacific rdo 126.7 (FISE) 122.5 (FISE)</p> <p>ATIS 119.8 15-07Z‡</p> <p>GND 121.8 15-07Z‡</p> <p>TWR 119.4 (inner) 121.0 (outer) 295.0 (E) 15-07Z‡ (emerg only 604-855-1199)</p> <p>MF Cranbrook rdo 119.4 295.0 (E) 07-15Z‡ CZ shape irregular 2500 ASL (CAR 602.98) (emerg only 250-426-6312)</p> <p>PAL Victoria Tml 132.7 290.8</p>
NAV	<p>VOT 115.7</p> <p>NDB XX 344 (M) N49 00 56 W122 29 16 068° 4.3NM to A/D CULTUS LU 214 (M) N49 01 16 W122 02 59 252° 12.3NM to A/D WHITE ROCK WC 332 (L) N49 00 12 W122 45 01 067° 14.7NM to A/D</p> <p>ILS IXX 109.7 (Rwy 07) RVR</p>
PRO	<p>Rgt hand circuit rwys 07 & 01 (CAR 602.96). NIGHT RESTRICTIONS: Lcl tng flts not permitted fr 2200-0700 (lcl time) exc as otherwise authorized by the APM. These pro apply to all jet acft including turbo-jets, turbo-fanjets & fanjets. Procedures for crossing the southern Strait of Georgia within Tml Class C airspace refer to Vancouver Intl, VTPC for Crossing the Southern Strait of Georgia. Turf rwy ltd maint PPR.</p> <p>ATS REQUIREMENTS: All VFR acft arriving, departing or transiting the Vancouver or Victoria Tower Class C or D airspace require a transponder code. - All acft departing Vancouver or Victoria Intl (including Water Aerodrome) call Vancouver ACC at 888-987-2633 (888-YVR-CODE) or 604-586-4595 for code assignment at least 30 min prior to flight or file a VFR Flight Plan/Flight Itinerary. - All acft arriving Vancouver Intl (including Water Aerodrome) or transiting Vancouver or Victoria Control Zones obtain a code from one of the following ATS units: Vancouver Harbour, Nanaimo, Victoria Harbour, Boundary Bay, Langley, Abbotsford or Pitt Meadows, or call Vancouver ACC at 888-987-2633 (888-YVR-CODE) or 604-586-4595. - All acft arriving Victoria Intl from a non NAV CANADA site call Vancouver ACC at 888-987-2633 (888-YVR-CODE) or 604-586-4595 for code assignment at least 30 minutes prior to flight or file a VFR Flight Plan/ Flight Itinerary.</p>
HELI	<p>Dep climb to 800 ASL ASAP. Dep/arr E, W, & NW follow rtes as depicted on VTPC. Dep/arr S & SW as cleared by ATC. Infield heli tng area, remain 400' fr rwys 700 ASL & below, ctc ATC for Heli circuit procedures.</p>
CAUTION	Numerous obsts in heli tng areas. CYA 152P, parachute area aprx 5NM NNE of aprt.

CANADA FLIGHT SUPPLEMENT / GPH 205

Effective 0901Z 20 November 2008 to 0901Z 15 January 2009

B4 AERODROME/FACILITY DIRECTORY

ABBOTSFORD (REGIONAL HOSP & CANCER CENTRE) BC (Heli)

CAB5

REF	N49 02 10 W122 18 51 19°E UTC-8(7) Elev 287' VTA A5004	
OPR	Abbotsford Regional Hosp & Cancer Centre 604-541-5808 Cert PPR	
FLT PLN	NOTAM FILE CYXX	
FIC	Kamloops 866-WXBRIEF (Toll free within Canada) or 866-541-4101 (Toll free within Canada & USA)	
PAD DATA	65' dia concrete 115' dia turf	
RCR	Opr	
LIGHTING	RY(LO) AZ	
COMM		
RCO	Cranbrook rdo 119.4 (RAAS) 07-15Z‡ Pacific rdo 126.7 (FISE) 122.5 (FISE)	
ATIS	119.8 15-07Z‡	
TWR	Abbotsford 119.4 (inner) 121.0 (outer) 15-07Z‡	
MF	Cranbrook rdo 119.4 07-15Z‡ CZ shape irregular 2500 ASL (CAR 602.98)	
PRO	Heli lctd in CYR141. PPR fr Warden Pacific Institute. Ops rstd to acct auth by British Columbia Ambulance Service. Flt auth on depicted arr/dep 114° & 261° paths only. 261° rstd to use by multi engine heli. (CAR 602.96)	
CAUTION	Trees along edge of flt paths.	

ACME AB

CEG2

REF	N51 27 23 W113 30 55 3.5S 17°E UTC-7(6) Elev 3035' VTA A5005 E-15 E-16	
OPR	B.J. Le May 403-546-2341 Reg PPR	
PF	C-1	
FLT PLN	NOTAM FILE CYBW	
FIC	Edmonton 866-WXBRIEF (Toll free within Canada) or 866-541-4102 (Toll free within Canada & USA)	
ACC	Edmonton IFR 888-358-7526 or 780-890-8304/8305	
RWY DATA	Rwy 13/31 2800x100 turf Rwy 07/25 1400x75 turf	
RCR	Opr No win maint	
COMM		
ATF	UNICOM ltd hrs O/T tfc 122.8 5NM 6100 ASL	

AÉROPARC ÎLE PERROT QC — See MONTRÉAL / AÉROPARC ÎLE PERROT

CANADA FLIGHT SUPPLEMENT / GPH 205

Effective 0901Z 20 November 2008 to 0901Z 15 January 2009

AERODROME/FACILITY DIRECTORY B5

AIRDRIE AB

CEF4

REF	N51 15 50 W113 56 04 2.6SE 17°E UTC-7(6) Elev 3653' VTA A5005 E-15 E-16 LO2 HI3 T1 RCAP	
OPR	Airdrie Aprt Ltd 403-948-5839/291-3300/818-3839 Reg PPR	
PF	B-1 C-2,3,4,5,6	
FLT PLN	NOTAM FILE CYBW	
FIC	Edmonton 866-WXBRIEF (Toll free within Canada) or 866-541-4102 (Toll free within Canada & USA)	
ACC	Edmonton IFR 888-358-7526 or 780-890-8304/8305	
SERVICES		
FUEL	100LL PNR 403-948-5839/818-3839	
RWY DATA	Rwy 12(121°)/30(301°) 5000x100 asphalt	
RCR	Opr Ltd win maint.	
LIGHTING	12-AS(TE LO), 30-AS(TE LO) ARCAL-122.9 type J	
COMM		
ATF	UNICOM ltd hrs O/T tfc 122.9 2NM 4800 ASL	
PRO	Rgt hand circuit rwy 30 (CAR 602.96). Circuit hgt 4200 ASL or below. Arr/dep: ctc Calgary advsy 119.4 prior to entering Class "C" airspace. Dep NE quad.	

AIR VICE MARSHAL C.M. McEWEN SK — See MOOSE JAW / AIR VICE MARSHAL C.M. McEWEN

AJAX (PICKERING GEN HOSP) ON (Heli)

CPE2

REF	N43 50 W79 01 Adj 11°W UTC-5(4) Elev 300' VTA A5000	
OPR	Ajax Pickering Gen Hosp 905-683-2320 Cert PPR	
FLT PLN	NOTAM FILE CYOO	
FIC	London 866-WXBRIEF (Toll free within Canada) or 866-541-4104 (Toll free within Canada & USA)	
PAD DATA	86' x 86' 114' x 114' Rstd max heli length 57.5'	
LIGHTING	DR RY(LO) RF(FL)	
COMM		
A/G	Ambulance dispatch 129.275	
PRO	Single apch/dep flt path bearing 069° fr heli.	

A.J. FLYING RANCH AB — See CAYLEY / A.J. FLYING RANCH

CANADA FLIGHT SUPPLEMENT / GPH 205

Effective 0901Z 20 November 2008 to 0901Z 15 January 2009

B6 AERODROME/FACILITY DIRECTORY

AKLAVIK / FREDDIE CARMICHAEL NT

CYKD

REF	N68 13 24 W135 00 21 Adj 30°E UTC-7(6) Elev 23' A5034 A5040 C-9 LO5 CAP	
OPR	Govt of Northwest Territories 867-777-2467 Emerg/Incident rpt ctc Govt of Northwest Territories 867-678-0791 or 877-989-1400 Cert	
PF	A-1 C-2,3,4	
FLT PLN	NOTAM FILE CYKD	
FIC	North Bay 866-WXBRIEF (Toll free within Canada) or 866-541-4109 (Toll free within Canada & USA)	
ACC	Edmonton IFR 888-358-7526 or 780-890-8304/8305	
CARS	867-978-2309 Ltd hrs (see COMM)	
WX	METAR dur CARS hrs of ops (see COMM).	
RWY DATA	Rwy 13(126°)/31(306°) 3000x75 gravel	
RCR	Opr Win maint avbl 15-24Z† Mon-Fri exc hols, O/T 1 hr PNR, ctc 867-978-2270/678-0791. Call out chg may be levied.	
LIGHTING	13-AS(TE ME) APAPI, 31-AS(TE ME) APAPI ARCAL-122.1 type K, AS lgt avbl on hi intensity only. APAPI avbl only dur CARS hrs ops.	
COMM		
MF	aprt rdo ltd hrs O/T tfc 122.1 5NM 3100 ASL (CAR 602.98)	
ARPT RDO	122.1 (V) 14-24Z† Mon-Sat, 15-20Z† Sun, exc hols	
NAV		
NDB	AKLAVIK YKD 208 (L) N68 13 35 W135 00 52 at A/D	

AKULIVIK QC

CYKO

REF	N60 49 07 W78 08 55 1.5SW 24°W UTC-5(4) Elev 75' A5032 D-14 LO5 CAP	
OPR	Administration Régionale Kativik 819-964-2968 14-22Z† Mon-Fri O/T 819-964-3434 Ext 154 Fax 819-964-2462 Cert	
PF	A-1 C-2,4,5	
FLT PLN	(bil) NOTAM FILE CYGW	
FIC	Québec 866-GOMÉTÉO or 866-WXBRIEF (Toll free within Canada) or 866-541-4105 (Toll free within Canada & USA)	
ACC	Montréal 800-633-1353	
CARS	819-496-2183 ltd hrs (see COMM)	
WX	METAR dur CARS hrs	
RWY DATA	Rwy 08(084°)/26(264°) 3510x100 gravel Rwy 26 down 1.9% first 1739'	
RCR	Opr	
LIGHTING	08-AS(TE ME), 26-AS(TE ME) ARCAL-122.1 type J	
COMM		
MF/ATF	aprt rdo (English only) ltd hrs O/T tfc 122.1 5NM 3100 ASL (CAR 602.98)	
ARPT RDO	122.1 (V) 1230-2230Z†	

CANADA FLIGHT SUPPLEMENT / GPH 205

Effective 0901Z 20 November 2008 to 0901Z 15 January 2009

AERODROME/FACILITY DIRECTORY B7

AKULIVIK QC (Cont'd)

CYKO

NAV	NDB YKO 265 (L) N60 49 10 W78 09 17 at A/D Unmonitored when CARS clsd.
CAUTION	Possible caribou on rwy Dec-Jun.

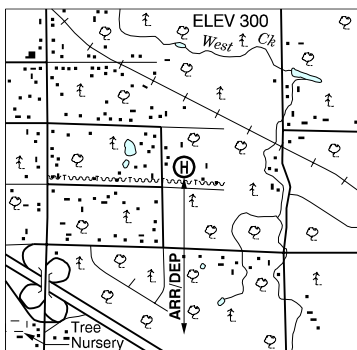
ALBAN ON — See FRENCH RIVER / ALBAN

ALBIAN AB — See FORT MACKAY/ALBIAN

ALDERGROVE (HICKS) BC (Heli)

CHK2

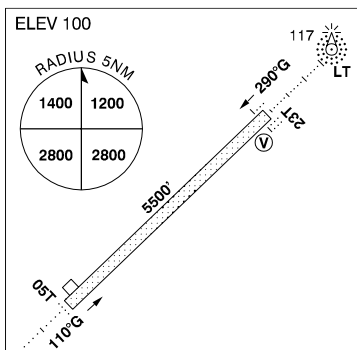
REF	N49 06 28 W122 28 49 19°E UTC-8(7) Elev 300' VTA
OPR	Alan Hicks 604-506-1601 Reg
PF	C-1,2,3,4,5,6
FLT PLN	NOTAM FILE CYXX
FIC	Kamloops 866-WXBRIEF (Toll free within Canada) or 866-541-4101 (Toll free within Canada & USA)
PAD DATA	56' dia grass Max length 45'
RCR	Opr Day only
PRO	Arr/dep South over vacant land.
CAUTION	Power line on apch/dep. Tall trees north of pad. Helipad along Abbotsford Heli WEST ROUTE.



ALERT NU

CYLT

REF	N82 31 04 W62 16 50 64°W GV2°W UTC-5(4) Elev 100' A5050 A-5 LO9 HI1 CAP
OPR	DND/COS IM G4 613-996-7741 CSN 846-7741 Mil PPR for civ acft 13-21Z†
FLT PLN	NOTAM FILE CYLT
ACC	Edmonton IFR 888-358-7526 or 780-890-8304/8305
MIL	on site IFR clnc for rtes entering Reykjavik airspace can be obtained by contacting +354-569-4264/4141 prior to dep fr Alert.
WX	METAR avbl PNR to DND auth flts. TAF avbl PNR to DND auth flts.
SERVICES	
FUEL	PPR thru NDHQ/COS IM G4 613-996-7741 CSN 846-7741
ARFF	4
RWY DATA	Rwy 05T(048°T)/23T(228°T) 5500x150 gravel Opr Strip plowed weekly. PLR/PCN
LIGHTING	05T-AJ(HI), 23T-AF(non-std 2000') AS(HI) V2 2.5° GPI 900; O/R fr Thule exc win when lgts turned on upon receipt of Flt Pln.



CANADA FLIGHT SUPPLEMENT / GPH 205

Effective 0901Z 20 November 2008 to 0901Z 15 January 2009

B8 AERODROME/FACILITY DIRECTORY

ALERT NU (Cont'd)

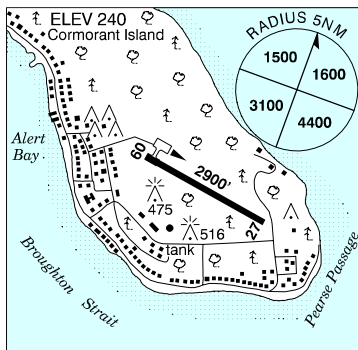
CYLT

COMM	MIL 5680 6706 11232 126.7 Fr Resolute or Thule 3 hrs PNR.
NAV	NDB LT 305 (M) N82 31 33 W62 12 41 228°T 0.3NM to A/D DME ULT 110.7 Ch 44 N82 31 02 W62 18 43 (72') at A/D.
PRO	Circling rstd to area NW rwy centreline. Ctc 126.7 prior to start up.
CAUTION	Dly radiosonde balloon launches with an ascent rate of 1000 ft/min btwn the hrs of 1115Z-1345Z & 2315Z-0145Z.

ALERT BAY BC

CYAL

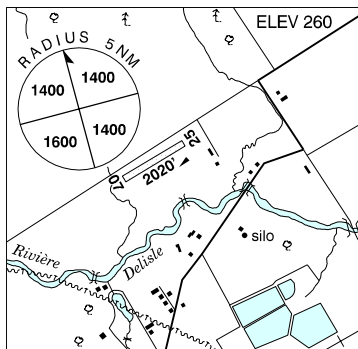
REF	N50 34 56 W126 54 56 Adj SE 20°E UTC-8(7) Elev 240' A5004 E-15
OPR	Corp of the village of Alert Bay 250-974-5213 Reg
PF	B-1 C-2,3,4,5
FLT PLN	NOTAM FILE CYZT FIC Kamloops 866-WXBRIEF (Toll free within Canada) or 866-541-4101 (Toll free within Canada & USA)
SERVICES	S 4,5
RWY DATA	RCR Rwy 09/27 2900x75 asphalt
COMM	ATF tfc 122.8 2NM 1600 ASL
CAUTION	Severe downdrafts may be encountered on apch or dep to/fr rwy 09 when winds are 25 kt or stronger from SE. Sharp drop-off of aprx 100' at west end of rwy. Moderate drop-off E end of rwy.



ALEXANDRIA ON

CNS4

REF	N45 20 W74 37 Adj NE 15°W UTC-5(4) Elev 260' VTA A5000 A5002 F-21
OPR	Alexandria Aviation Ltd 613-525-0877 Reg Opr ltd hrs
PF	B-1 C-2,3,4,5,6
FLT PLN	(bil) NOTAM FILE CYCC FIC Québec 866-GOMÉTÉO or 866-WXBRIEF (Toll free within Canada) or 866-541-4105 (Toll free within Canada & USA)
SERVICES	FUEL 100LL (key lock avbl) OIL All S 1,2,3,4,5 maint 613-874-1156
RWY DATA	Rwy 07/25 2020x100 turf RCR Opr 613-525-0877 Rwy soft dur spring thaw. No win maint.



CANADA FLIGHT SUPPLEMENT / GPH 205

Effective 0901Z 20 November 2008 to 0901Z 15 January 2009

AERODROME/FACILITY DIRECTORY B9

ALEXANDRIA ON (Cont'd)

CNS4

COMM	
ATF	tfc 123.2 5NM 3300 ASL
PRO	Gliding activities wknds fr May 24-Jun 15 & Aug 25-Oct 15. Glider rgt hand circuits 4760 ASL (CAR 602.96).
CAUTION	Creek aprx 10' wide and 6' deep aprx 120' fr thld 07. Parachute descent to 12,000 ASL fr Apr to Oct.

ALLISTON ON

CNY4

REF	N44 11 W79 50 1.3NE 10°W UTC-5(4) Elev 720' VTA A5000 F-21	
OPR	Kim & Sylvia Murphy 705-435-9636 Reg	
PF	B-1 C-2,3,4,5,6	
FLT PLN	NOTAM FILE CYKZ	
FIC	London 866-WXBRIEF (Toll free within Canada) or 866-541-4104 (Toll free within Canada & USA)	
SERVICES		
S	4,5	
RWY DATA	Rwy 18/36 2300x50 turf/snow Thld 18 disp 200' & thld 36 displ 200'	
RCR	Opr Rwy may be soft in spring.	
LIGHTING	18-(LO), 36-(LO) O/R 1900' only PPR Opr	
COMM		
ATF	tfc 123.2 5NM 3700 ASL	
CAUTION	Marked P-lines 45 AGL aprx 1000' fr thld 18. Ditch aprx 6' deep at thld rwy 18. Trees 30 AGL either side thld 18, 100' fr rwy centreline. Bldg 40 AGL on apch rwy 36 aprx 1400' fr thld 36.	

ALLISTON ON (Heli)

CPJ2

REF	N44 08 53 W79 47 58 2.3E 10°W UTC-5(4) Elev 760' VTA A5000	
OPR	Uscan Aviation Sales Ltd 705-435-4031/4468 Reg PPR	
PF	B-1 C-2,3,4,5,6	
FLT PLN	NOTAM FILE CYKZ	
FIC	London 866-WXBRIEF (Toll free within Canada) or 866-541-4104 (Toll free within Canada & USA)	
PAD DATA	200' x 200' turf Rstd max heli length 100'	
RCR	Opr	
COMM		
ATF	tfc 123.2 5NM 3800 ASL	
PRO	Arr/dep 180° & 360° fr heli. Alliston A/D 2.6NM NW.	

CANADA FLIGHT SUPPLEMENT / GPH 205

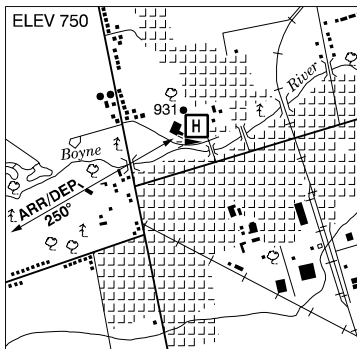
Effective 0901Z 20 November 2008 to 0901Z 15 January 2009

B10 AERODROME/FACILITY DIRECTORY

ALLISTON (STEVENSON MEM HOSP) ON (Heli)

CPZ2

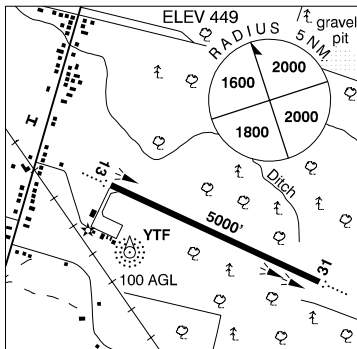
REF	N44 09 19 W79 52 27 Adj NW 10°W UTC-5(4) Elev 750' VTA A5000
OPR	Stevenson Mem Hosp 705-435-6281 Cert PPR
FLT PLN	NOTAM FILE CYKZ
FIC	London 866-WXBRIEF (Toll free within Canada) or 866-541-4104 (Toll free within Canada & USA)
PAD DATA	86' dia asphalt 114' dia Rstd max heli length 57.5'
RCR	Opr
LIGHTING	DR RY(LO) RF(FL) All portable PNR
COMM	
A/G	ambulance dispatch 129.275
PRO	Arr/dep 250° fr heli. Cert for ngt use with portable lgtg.



ALMA QC

CYTF

REF	N48 30 31 W71 38 29 2.2S 18°W UTC-5(4) Elev 449' A5010 F-21 LO6 LO7 HI5 HI6 CAP
OPR	Town 418-669-5104 Cert
PF	A-1 C-2,3,5
FLT PLN	(bil) NOTAM FILE CYRJ
FIC	Québec 866-GOMÉTÉO or 866-WXBRIEF (Toll free within Canada) or 866-541-4105 (Toll free within Canada & USA)
ACC	Montréal 800-633-1353
SERVICES	Call out chg may be levied for one or more svcs
FUEL	100LL, JB 418-480-3999
S	1(Ltd),2,3,4,5,6
JASU	10/15
RWY DATA	Rwy 13(132°)/31(312°) 5000x100 asphalt
RCR	418-669-5104 or 418-720-0653/0332 Win maint 11-01Z± O/T O/R call out chg may be levied PLR/PCN.
LIGHTING	13-AO(TE ME), 31-AO(TE ME) ARCAL-123.0 type J
COMM	(bil)
CLNC DEL	Prior dep pilots must ctc Bagotville Tml for IFR clnc at 888-813-8508.
ATF	UNICOM ltd hrs O/T tfc 123.0 5NM (CYBG class D airspace - refer to Bagotville VTPC)
TML	Bagotville 127.2 227.6
VFR ADV	Bagotville Tml 121.2 11-21Z± O/T 127.2
NAV	
NDB	YTF 253 (L) N48 30 28 W71 38 58 at A/D
DME	ITF 110.7 Ch 44 N48 30 14 W71 37 47 (458') at A/D
LOC	ITF 110.7 (Rwy 13/31) N48 30 18 W71 37 45 (459')



CANADA FLIGHT SUPPLEMENT / GPH 205

Effective 0901Z 20 November 2008 to 0901Z 15 January 2009

AERODROME/FACILITY DIRECTORY B11

ALTONA MUNI MB

CJL6

REF	N49 05 40 W97 32 02 1.5 SE 5°E UTC-6(5) Elev 806' A5007 E-16 E-17 LO3	
OPR	Altona Flying Club 204-327-5866/204-324-5278 or Town of Altona 204-324-8190/5357 Reg	
PF	B-1 C-2,4,5	
FLT PLN	NOTAM FILE CYDN	
FIC	Winnipeg 866-WXBRIEF (Toll free within Canada) or 866-541-4103 (Toll free within Canada & USA)	
SERVICES	Fuel O/R 204-324-5278/7979	
FUEL	100LL	
S	4,5,6	
RWY DATA	Rwy 17(175°)/35(355°) 3248x75 asphalt Thld 35 displ 138' Rwy 08(085°)/26(265°) 2000x80 turf	
RCR	Opr or 204-324-7510/5278 or 204-327-5866 Rwy 08/26 no win maint. Rwy 17/35 ltd win maint.	
LIGHTING	17-(TE LO), 35-(TE LO) ARCAL-123.2 type J	
COMM		
ATF	tfc 123.2 5NM 3900 ASL	
CAUTION	Ocsl model acft activity at aprt.	

AMHERST NS (Heli)

CCB3

REF	N45 48 43 W64 13 13 Adj SSW 20°W UTC-4(3) Elev 99' A5003	
OPR	Dept of Economic Development, Town of Amherst 902-667-2562 Reg PPR	
FLT PLN	NOTAM FILE CYHZ	
FIC	Halifax 866-WXBRIEF or (French) 866-GOMÉTEO (Toll free within Canada) or 866-541-4106 (Toll free within Canada & USA)	
ACC	Moncton 506-867-7176 or 866-480-8200 Flt Plns by Fax 506-867-7180 & include phone numbers where pilot can be reached prior to dep	
PAD DATA	75' x 75' asphalt	
COMM		
ATF	tfc 123.2 5NM 3100 ASL	
PRO	Arr/Dep E-W.	
CAUTION	Training areas around heliport, see Moncton VTPC - Training areas.	

CANADA FLIGHT SUPPLEMENT / GPH 205

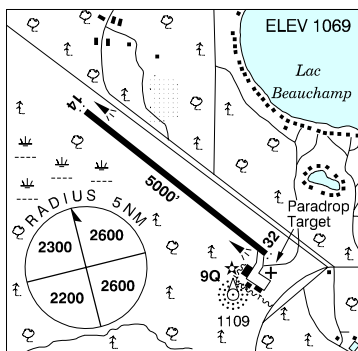
Effective 0901Z 20 November 2008 to 0901Z 15 January 2009

B12 AERODROME/FACILITY DIRECTORY

AMOS / MAGNY QC

CYEU

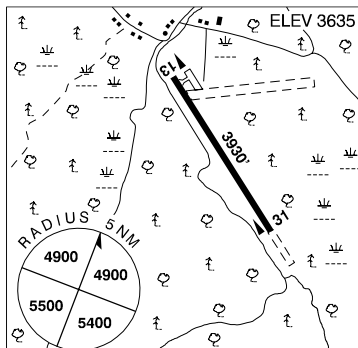
REF	N48 33 54 W78 14 57 5W 14°W UTC-5 (4) Elev 1069' A5009 E-18 F-21 LO3 LO4 LO7 HI1 HI5 CAP
OPR	Town 819-732-4828 Reg Ldg fees
PF	A-1 B-6 C-2,3 D-4,5
FLT PLN	(bil) NOTAM FILE CYUY
FIC	Québec 866-GOMÉTÉO or 866-WXBRIEF (Toll free within Canada) or 866-541-4105 (Toll free within Canada & USA)
ACC	Montréal 800-633-1353
SERVICES	Call out chg may be levied for one or more svcs
FUEL	100LL, JA-1 (FSII), MOGAS-1
OIL	15W50, 20W50
S	2,3,4,5,6
RWY DATA	Rwy 14(142°)/32(322°) 5000x100 asphalt
RCR	APM 819-732-4828
LIGHTING	14-AS(TE ME), 32-AS(TE ME) ARCAL-122.8 type K
COMM	(bil)
ATF	UNICOM ltd hrs O/T tfc 122.8 5NM 4100 ASL
NAV	
NDB	9Q 291 (L) N48 33 27 W78 14 35 339° 0.5NM to A/D
PRO	Seaplane ops on Beauchamp Lake.
CAUTION	Parachute jumps over aprt to 10,000 ASL, (DT 11-02Z) dly May-Sep.



ANAHIM LAKE BC

CAJ4

REF	N52 27 09 W125 18 12 1S 21°E UTC-8(7) Elev 3635' A5013 E-15 LO2 HI3 CAP
OPR	Cariboo Regional District 250-392-3351 Cert
PF	B-1 C-2,3,4,5
FLT PLN	NOTAM FILE CYWL
FIC	Kamloops 866-WXBRIEF (Toll free within Canada) or 866-541-4101 (Toll free within Canada & USA)
SERVICES	
FUEL	100LL, JA APM 250-742-3246
OIL	All
S	2,3,4,5,6
RWY DATA	Rwy 13(127°)/31(307°) 3930x75 asphalt
RCR	APM 250-742-3246 16-01Z± dly O/T 3 hrs PNR. Ltd win maint. PLR/PCN.
COMM	
ATF	tfc 122.8 5NM 6600 ASL



CANADA FLIGHT SUPPLEMENT / GPH 205

Effective 0901Z 20 November 2008 to 0901Z 15 January 2009

AERODROME/FACILITY DIRECTORY B13

ANAHIM LAKE BC (Cont'd)

CAJ4

NAV	NDB UAB 200 (M) N52 22 47 W125 10 52 292° 5.8NM to A/D
CAUTION	Expect moderate to extreme turbulence when winds fr W. Gravel area SE of thld rwy 31 unuseable. Extv floatplane activity at Nimpo Lake, S of Anahim Lake NDB. Possible presence of large animals within aprt perimeter.

ANDERSON AB — See LETHBRIDGE / ANDERSON

ANGLING LAKE / WAPEKEKA ON

CKB6

REF	N53 50 57 W89 34 46 1.5W 5°W UTC-6(5) Elev 712' A5017 E-17 LO3 CAP	
OPR	Govt of Ontario 807-473-2082 Cert opr 14-23Z± Mon-Fri exc hols	
PF	C-1,4	
FLT PLN	NOTAM FILE CYXL	
FIC	Winnipeg 866-WXBRIEF (Toll free within Canada) or 866-541-4103 (Toll free within Canada & USA)	
RWY DATA	Rwy 12(120°)/30(300°) 3600x100 gravel	
RCR	APM 807-537-2497 14-23Z± Mon-Fri exc hols. Rwy strength & cond subject to seasonal & climatic var.	
LIGHTING	12-(TE LO) AP, 30-(TE LO) AP ARCAL-123.2 type K for APAPI, rwy lgts low ints only.	
COMM	ATF tfc 123.2 5NM 3800 ASL	

ANTIGONISH (ST. MARTHA'S REGIONAL HOSP) NS (Heli)

CDY5

REF	N45 37 36 W61 58 55 Adj NE 20°W UTC-4(3) Elev 70' A5003 F22	
OPR	St. Martha's Regional Hosp 902-863-2830 Cert PPR	
FLT PLN	NOTAM FILE CYHZ	
FIC	Halifax 866-WXBRIEF or (French) 866-GOMÉTÉO (Toll free within Canada) or 866-541-4106 (Toll free within Canada & USA)	
ACC	Moncton 506-867-7176 or 866-480-8200 Flt Plns by Fax 506-867-7180 & include phone numbers where pilot can be reached prior to dep	
PAD DATA	80' circular concrete (rstd to twin engine heli with max overall length 53.5')	
LIGHTING	FH	
COMM	ATF tfc 123.2 5NM 3200 ASL	

CANADA FLIGHT SUPPLEMENT / GPH 205

Effective 0901Z 20 November 2008 to 0901Z 15 January 2009

B14 AERODROME/FACILITY DIRECTORY

ANTIGONISH (ST. MARTHA'S REGIONAL HOSP) NS (Heli) (Cont'd)

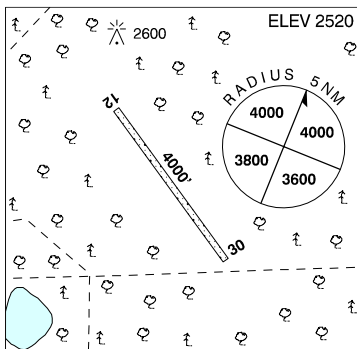
CDY5

PRO	Arr/dep btwn 089°-189° fr heli.
CAUTION	35' powerpoles 90° W of heli.

APACHE / HAMBURG AB

CFM5

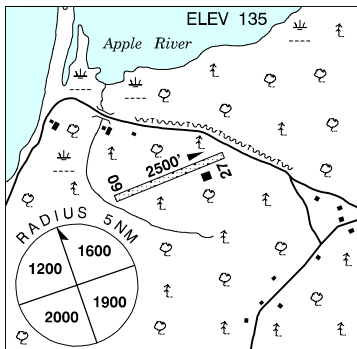
REF	N57 21 21 W119 45 55 22°E UTC-7(6) Elev 2520' A5022 D-13
OPR	Apache Canada Ltd 780-836-2822 Reg PPR
FLT PLN	NOTAM FILE CYXJ
FIC	Edmonton 866-WXBRIEF (Toll free within Canada) or 866-541-4102 (Toll free within Canada & USA)
ACC	Edmonton IFR 888-358-7526 or 780-890-8304/8305
RWY DATA	Rwy 12(120°)/30(300°) 4000x75 gravel
RCR	Opr Ltd win maint PNR
COMM	
ATF	UNICOM 130.275 5NM 5600 ASL



APPLE RIVER NS

CCA7

REF	N45 27 43 W64 49 17 1.5W 19°W UTC-4(3) Elev 135' A5003 F-22
OPR	H. Robinson 902-830-4594 Fax 902-443-8201 Reg
PF	C-1 D-2,3,4,5,6
FLT PLN	NOTAM FILE CYHZ
FIC	Halifax 866-WXBRIEF or (French) 866-GOMÉTÉO (Toll free within Canada) or 866-541-4106 (Toll free within Canada & USA)
ACC	Moncton 506-867-7176 or 866-480-8200 Flt Plns by Fax 506-867-7180 & include phone numbers where pilot can be reached prior to dep
RWY DATA	Rwy 09/27 2500x40 turf Rwy 27 slopes down
RCR	Opr A/D clsd Nov 1-Jun 1
COMM	
ATF	tfc 123.2 5NM 3100 ASL
CAUTION	Rwy soft & slippery when wet. Rwy soft outside edges. P-line on apch rwy 27.



CANADA FLIGHT SUPPLEMENT / GPH 205

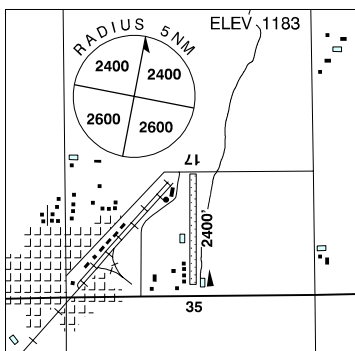
Effective 0901Z 20 November 2008 to 0901Z 15 January 2009

AERODROME/FACILITY DIRECTORY B15

ARBORFIELD SK

CJM6

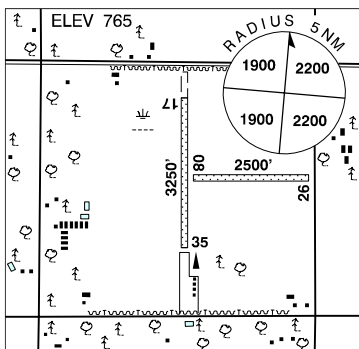
REF	N53 06 28 W103 39 02 1NE 11°E UTC-6 Elev 1183' A5016 E-17
OPR	V. Cummings 306-769-8667 Reg
PF	C-1,2,4,5
FLT PLN	NOTAM FILE CYP A
FIC	Edmonton 866-WXBRIEF (Toll free within Canada) or 866-541-4102 (Toll free within Canada & USA)
RWY DATA	Rwy 17(171°)/35(351°) 2400x100 turf Rwy slightly undulating
RCR	Opr Ltd win maint
COMM	
ATF	tfc 123.2 5NM 4200 ASL



ARBORG MB

CJU6

REF	N50 54 46 W97 18 16 3.5W 5°E UTC-6(5) Elev 765' A5007 E-16 E-17
OPR	Arborg Bifrost Aprt Comsn 204-376-5343/5287 Reg
PF	B-1 C-2,3,4,5
FLT PLN	NOTAM FILE CYDN
FIC	Winnipeg 866-WXBRIEF (Toll free within Canada) or 866-541-4103 (Toll free within Canada & USA)
SERVICES	
FUEL	100LL
OIL	80, 100
RWY DATA	Rwy 17(174°)/35(354°) 3250x100 turf Rwy 08(085°)/26(265°) 2500x45 turf
RCR	Opr Ltd win maint. Rwy 08/26 soft when wet.
COMM	
ATF	UNICOM ltd hrs O/T tfc 122.8 5NM 3800 ASL
PRO	Rgt hand circuits rwy 35 (CAR 602.96).
CAUTION	Lgtd twr 1110 ASL (360 AGL) 2.8NM E of A/D.



CANADA FLIGHT SUPPLEMENT / GPH 205

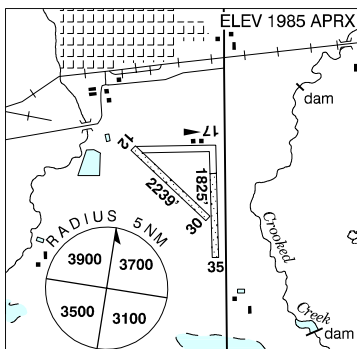
Effective 0901Z 20 November 2008 to 0901Z 15 January 2009

B16 AERODROME/FACILITY DIRECTORY

ARCOLA SK

CJA7

REF	N49 38 W102 29 Adj S 9°E UTC-6 Elev 1985' aprx A5006 E-16
OPR	Town 306-455-2212 or 306-577-7500 Reg
PF	C-1,2,5
FLT PLN	NOTAM FILE CYQV
FIC	Edmonton 866-WXBRIEF (Toll free within Canada) or 866-541-4102 (Toll free within Canada & USA)
RWY DATA	Rwy 17(169°)/35(349°) 1825x80 turf/clay Rwy 12(117°)/30(297°) 2239x80 turf
RCR	Ken McMillan 306-455-2282, 306-577-7500. No win maint.

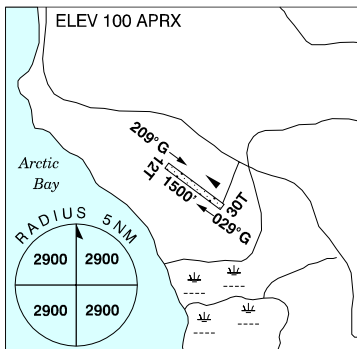


COMM	
ATF	tfc 122.8 5NM 5000 ASL
CAUTION	Lgtd twr 2410 ASL (360 AGL) 2.6NM W of A/D.

ARCTIC BAY NU

CJX7

REF	N73 00 19 W85 01 59 3SE 47°W GV38°E UTC-5(4) Elev 100' aprx A5046 A5047 B-8
OPR	Hamlet 867-439-9917 Reg
PF	C-1,2,4,5
FLT PLN	NOTAM FILE CYSR
FIC	North Bay 866-WXBRIEF (Toll free within Canada) or 866-541-4109 (Toll free within Canada & USA)
ACC	Edmonton IFR 888-358-7526 or 780-890-8304/8305
RWY DATA	Rwy 12T(124°T)/30T(304°T) 1500x50 gravel Rwy 12T up 1.0%
RCR	Opr



COMM	
ATF	tfc 122.1 5NM 3100 ASL
CAUTION	Sharp 10'-15' drop-off both sides & both ends of rwy.

CANADA FLIGHT SUPPLEMENT / GPH 205

Effective 0901Z 20 November 2008 to 0901Z 15 January 2009

AERODROME/FACILITY DIRECTORY B17

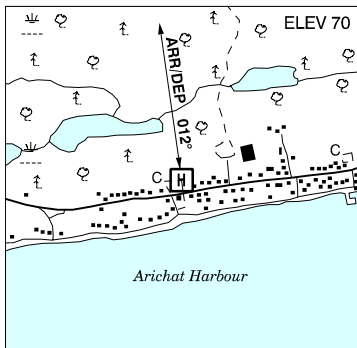
ARCTIC RADIO – RCO – NOTAM FILE CZNB (North Bay FIC 866-WXBRIEF)

Baker Lake 126.7 (FISE) 5680 (N64 18 W96 04)
Brevoort 126.7 (FISE) 364.2 (FISE) (E) (N63 21 W64 10)
Cambridge Bay 126.7 (FISE) 364.2 (FISE) (E) (N69 07 W105 10)
Cape Dyer 126.7 (FISE) 364.2 (FISE) (E) (N66 35 W61 34)
Cape Parry 126.7 (FISE) 364.2 (FISE) (E) (N70 10 W124 41)
Cartwright 126.7 (FISE) 364.2 (FISE) (E) (N53 41 W57 03)
Churchill 123.275 (FISE) 126.7 (bcst) (N58 46 W94 08)
Dewar Lakes 126.7 (FISE) 364.2 (FISE) (E) (N68 38 W71 08)
Ekati 123.275 (FISE) (N64 43 W110 37)
Fort Good Hope 126.7 (FISE) (N66 14 W128 39)
Fort Simpson 126.7 (FISE) 296.6 (FISE) (U) (N61 47 W121 16)
Fort Smith 123.55 (FISE) 239.8 (FISE) (U) (N60 01 W111 57)
Hall Beach 126.7 (FISE) 364.2 (FISE) (E) (N68 46 W81 14)
Hay River 123.275 (FISE) (U) 126.7 (bcst) (N60 50 W115 47)
Inuvik 126.7 (FISE) (N68 19 W133 29)
Inuvik 5680 (FISE) (N68 19 W133 35)
Iqaluit 123.275 (FISE) 126.7 (bcst) 5680 (N63 45 W68 33)
Lady Franklin Point 126.7 (FISE) 364.2 (FISE) (E) (N68 28 W113 13)
Norman Wells 123.275 (FISE) 126.7 (bcst) (N65 15 W126 41)
Rankin Inlet 126.7 (FISE) (N62 48 W92 07)
Resolute Bay 126.7 (FISE) 5680 (N74 44 W94 59)
Saglek 126.7 (FISE) 364.2 (FISE) (E) (N58 28 W62 39)
Shepherd Bay 126.7 (FISE) 364.2 (FISE) (E) (N68 47 W93 25)
Shingle Point 126.7 (FISE) 364.2 (FISE) (E) (N68 55 W137 13)
Yellowknife 5680 (FISE) 122.5 (FISE) 126.7 (FISE) 262.0 (FISE) (N62 28 W114 26)

ARICHAT (ST. ANNE LADIES AUXILIARY HOSP) NS (Heli)

CDT3

REF	N45 30 41 W61 02 01 Adj W 20°W UTC-4(3) Elev 70' A5003
OPR	St. Anne Ladies Auxiliary 902-226-2826 Cert PPR
FLT PLN	NOTAM FILE CYQY
FIC	Halifax 866-WXBRIEF or (French) 866-GOMÉTÉO (Toll free within Canada) or 866-541-4106 (Toll free within Canada & USA)
ACC	Moncton 506-867-7176 or 866-480-8200 Flt Plns by Fax 506-867-7180 & include phone numbers where pilot can be reached prior to dep
PAD DATA	79' x 79' concrete (rstd to twin engine heli with max overall length of 52.5')
LIGHTING	FH 98' E of pad
COMM	
ATF	tfc 123.2 5NM 3100 ASL
PRO	Arr/Dep to 012° fr heli.



ARKAYLA SPRINGS AB — See COCHRANE / ARKAYLA SPRINGS

CANADA FLIGHT SUPPLEMENT / GPH 205

Effective 0901Z 20 November 2008 to 0901Z 15 January 2009

B18 AERODROME/FACILITY DIRECTORY

ARMSTRONG ON

CYYW

REF	N50 17 25 W88 54 35 4.5ESE 4°W UTC-5(4) Elev 1058' A5008 E-17 LO4 HI4	
OPR	Govt of Ontario 807-473-2082 Reg	
PF	C-1,2,4,5	
FLT PLN	NOTAM FILE CYPL	
FIC	Winnipeg 866-WXBRIEF (Toll free within Canada) or 866-541-4103 (Toll free within Canada & USA)	
RWY DATA	Rwy 12(123°)/30(303°) 4000x100 asphalt Rwy 18(183°)/36(003°) 2940x100 asphalt	
APRON	West apron rstd to forest fire fighting acft, all other acft use east apron.	
RCR	Opr No win maint on rwy 18/36. Ltd win maint rwy 12/30.	
LIGHTING	12-(TE ME) AP, 30-(TE ME) AP ARCAL-122.8 type K. Allow 10 sec for rwy lgt to activate.	
COMM		
ATF	tfc 122.8 5NM 4100 ASL	
NAV		
NDB	YYW 223 (M) N50 18 28 W89 01 20 108° 4.4NM to A/D Unmonitored	

ARMSTRONG ON (Heli)

CPE9

REF	N50 18 24 W89 01 48 Adj NE 4°W UTC-5(4) Elev 1125' aprx A5008	
OPR	Ontario Ministry of Natural Resources/Ontario Ministry of Health 807-583-2364 Reg PPR	
PF	B-1 C-2,4,5	
FLT PLN	NOTAM FILE CYPL	
FIC	Winnipeg 866-WXBRIEF (Toll free within Canada) or 866-541-4103 (Toll free within Canada & USA)	
SERVICES		
FUEL	JA-1	
PAD DATA	Pad-1 30' x 30' Pad-2 80' dia	
RCR	Opr	
LIGHTING	Reflective markers	
COMM		
ATF	UNICOM ltd hrs O/T tfc 122.8 5NM 4100 ASL	
A/G	MNR ops 122.9 ltd hrs	
PRO	Arr/dep NW quad.	

CANADA FLIGHT SUPPLEMENT / GPH 205

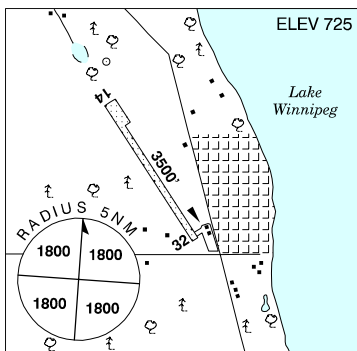
Effective 0901Z 20 November 2008 to 0901Z 15 January 2009

AERODROME/FACILITY DIRECTORY B19

ARNES MB

CJQ5

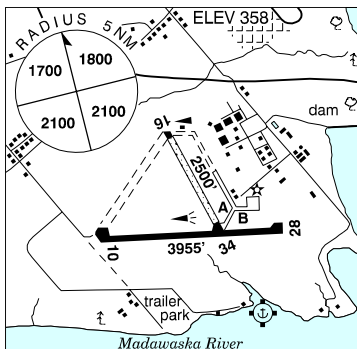
REF	N50 50 12 W96 57 29 2.5NE 4°E UTC-6(5) Elev 725' A5007 E-16 E-17
OPR	Northway Avn Ltd 204-642-7122 Reg PNR
PF	B-1 C-2 D-3,4,5
FLT PLN	NOTAM FILE CYDN
FIC	Winnipeg 866-WXBRIEF (Toll free within Canada) or 866-541-4103 (Toll free within Canada & USA)
SERVICES	
S	1,4,5,6
RWY DATA	Rwy 14(143°)/32(323°) 3500x80 turf Opr
RCR	
COMM	
ATF	UNICOM ltd hrs O/T tfc 129.8 5NM 3800 ASL



ARNPRIOR / SOUTH RENFREW MUNI ON

CNP3

REF	N45 24 49 W76 21 57 0.9S 14°W UTC-5(4) Elev 358' A5000 F-21 LO6 LO7 CAP
OPR	South Renfrew Muni Aprt Comsn 613-623-9687 or Page 613-780-4720 Fax 613-623-3445 Reg
PF	B-1 C-2,3,4,5,6
FLT PLN	NOTAM FILE CYTA
FIC	London 866-WXBRIEF (Toll free within Canada) or 866-541-4104 (Toll free within Canada & USA)
SERVICES	
FUEL	80, 100LL, JA-1
OIL	W80, W100, 15W50, 20W50
S	2,3,4,5,6
RWY DATA	Rwy 10/28 3955x75 asphalt Rwy 16/34 2500x50 gravel 200' thld of each rwy asphalt Opr 13-22Z† Rwy 16/34 no win maint
RCR	
LIGHTING	10-(TE LO), 28-(TE LO) ARCAL-122.7 type J
COMM	
ATF	UNICOM ltd hrs O/T tfc 122.7 5NM 3400 ASL
PRO	Seaplane ops on Madawaska River. Rwy 16/34 proh to acct exceeding 10,000 lbs GTW.
CAUTION	Parachuting over aprt 12,500 ASL & below, ocsl daylight by NOTAM.



CANADA FLIGHT SUPPLEMENT / GPH 205

Effective 0901Z 20 November 2008 to 0901Z 15 January 2009

B20 AERODROME/FACILITY DIRECTORY

ARNSTEIN ON

CNR9

REF	N45 55 32 W79 55 40 3E Port Loring 11°W UTC-5(4) Elev 745' A5000 A5001 F-21	
OPR	Tornado's Canadian Resorts Inc 705-757-2050 Fax 705-757-3007 Reg	
PF	C-1,2,4,5 D-3,6	
FLT PLN	NOTAM FILE CYXB	
FIC	London 866-WXBRIEF (Toll free within Canada) or 866-541-4104 (Toll free within Canada & USA)	
SERVICES		
S	4,5	
RWY DATA	Rwy 03/21 1850x100 turf	
RCR	Opr No win maint. Soft in spring & fall.	
COMM		
ATF	tfc 122.8 5NM 3700 ASL	
CAUTION	5' drop off thld 03. Trees up to 45 AGL within 120' of rwy centreline. Trees 60 AGL 1000' E of thld 21. Trees 70 AGL 650' W of thld 03.	

ARTHUR EAST ON — See ARTHUR (WALTER'S FIELD)

Sep 09

ARTHUR (WALTER'S FIELD) ON

CPC3

REF	N43 51 W80 27 5E 10°W UTC-5(4) Elev 1550' VTA A5000 F-21	
OPR	York Soaring Association 519-848-3621 or 416-223-6487 Reg PPR	
PF	B-1 C-2,3,4 D-5,6	
FLT PLN	NOTAM FILE CYKF	
FIC	London 866-WXBRIEF (Toll free within Canada) or 866-541-4104 (Toll free within Canada & USA)	
RWY DATA	Rwy 14/32 2600x270 turf Rwy 17/35 2150x170 turf Rwy 10/28 2000x230 turf Rwy 05/23 1970x330 turf (unl)	
RCR	Opr May thru Oct ltd hrs. No win maint. Rwys may be soft in spring and fall.	
COMM		
ATF	UNICOM ltd hrs O/T tfc 123.4 5NM 4600 ASL	
PRO	CAUTION: extv glider activity. Simultaneous rgt & left hand circuits in use by gliders and towplanes Apr-Dec (CAR 602.96).	

CANADA FLIGHT SUPPLEMENT / GPH 205

Effective 0901Z 20 November 2008 to 0901Z 15 January 2009

AERODROME/FACILITY DIRECTORY B21

ARVIAT NU

CYEK

REF	N61 05 39 W94 04 15 Adj 3°W GV91°E UTC-6(5) Elev 32' A5031 D-14 LO5 HI1 HI2 HI4 CAP	
OPR	Govt of Nunavut 867-645-8200 Cert	
PF	A-1 C-2,3,4,5	
FLT PLN	NOTAM FILE CYEK	
FIC	North Bay 866-WXBRIEF (Toll free within Canada) or 866-541-4109 (Toll free within Canada & USA)	
ACC	Edmonton IFR 888-358-7526 or 780-890-8304/8305	
CARS	867-857-2802 ltd hrs (see COMM), O/T 867-857-2282. Lcl wx only, other wx O/R.	
WX	METAR dur CARS hrs (see COMM) O/T Legacy AWOS. TAF H24, issue times: 00, 06, 12, 18Z.	
SERVICES	Call out chg may be levied outside oprg hrs.	
FUEL	DFA, JB (drums), 100LL (drums) 2 hrs PNR 867-857-2752 (daytime) or 867-857-2364/2767 O/T; Govt of NU DFA 1430-24Z† Mon-Sat exc hols PNR. VISA & Mastercard accepted. Credit by prior arng only, ctc 867-645-5169, allow 7 working days.	
S	6	
RWY DATA	Rwy 15T(149°T)/33T(329°T) 4000x100 gravel	
RCR	CARS, A/D maint avbl 14-23Z† Mon-Fri exc hol O/T 2 hrs PNR 867-857-2282. Call out chg rqrd. PLR/PCN	
LIGHTING	15T-AS(TE ME) V1, 33T-AS(TE ME) V1 Outside hrs of ops: ARCAL-122.1 key mic 3 times within 5 sec for rwy 33T lghts & VASIS, 5 times in 5 sec for rwy 15T lghts & VASIS; for 15 min duration. (See CAUTION).	
COMM		
MF	aprt rdo ltd hrs O/T tfc 122.1 5NM 3100 ASL (CAR 602.98)	
APRT RDO	122.1 (V) 1245-2315Z† Mon-Fri, 1445-2115Z† Sat & Sun, exc federal observed hols, O/T 2 hrs PNR, call out chg.	
Legacy AWOS	128.7	
NAV		
NDB	YEK 329 (M) N61 05 57 W94 04 08 at A/D	
CAUTION	Rwy edge lgt installed higher than std (aprx 27 inches high loc 5' outside rwy edge).	

CANADA FLIGHT SUPPLEMENT / GPH 205

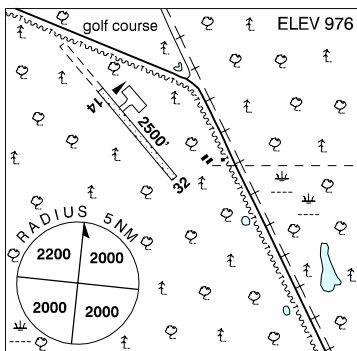
Effective 0901Z 20 November 2008 to 0901Z 15 January 2009

B22 AERODROME/FACILITY DIRECTORY

ASHERN MB

CJE7

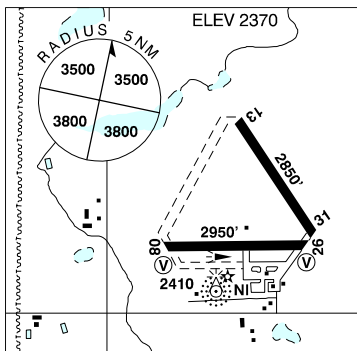
REF	N51 09 31 W98 19 55 1.5S 6°E UTC-6(5) Elev 976' A5007 E-16 E-17
OPR	Ashern Apt Comsn 204-768-2641 Reg
PF	B-1 C-2,3,5
FLT PLN	NOTAM FILE CYDN
FIC	Winnipeg 866-WXBRIEF (Toll free within Canada) or 866-541-4103 (Toll free within Canada & USA)
SERVICES	For svcg 204-768-3261/2105
FUEL	100LL
OIL	All
RWY DATA	Rwy 14(136°)/32(316°) 2500x90 turf
RCR	Opr or 204-786-3261
COMM	
ATF	tfc 123.2 5NM 4000 ASL



ASSINIBOIA SK

CJN4

REF	N49 44 05 W105 56 49 6N 12°E UTC-6 Elev 2370' A5006 E-16 LO2
OPR	Town 306-642-4424 Reg
PF	B-1 D-2,3,4,5,6
FLT PLN	NOTAM FILE CYQR
FIC	Edmonton 866-WXBRIEF (Toll free within Canada) or 866-541-4102 (Toll free within Canada & USA)
SERVICES	Call out chg may be levied for one or more svcs. For svcg 306-642-3147
FUEL	100LL
RWY DATA	Rwy 08(076°)/26(256°) 2950x150 asphalt
RCR	Rwy 13(135°)/31(315°) 2850x150 asphalt Opr Rwy 13/31 no win maint, sfc deteriorating. Rwy 08/26 ltd win maint.
LIGHTING	08-(TE LO) V, 26-(TE LO) V 08 & 26 V slope unknown, pvt. ARCAL-122.8 type J
COMM	
ATF	UNICOM ltd hrs O/T tfc 122.8 5NM 5400 ASL
NAV	
NDB	NI 278 (L) N49 43 42 W105 56 57 at A/D Pvt Unmonitored



CANADA FLIGHT SUPPLEMENT / GPH 205

Effective 0901Z 20 November 2008 to 0901Z 15 January 2009

AERODROME/FACILITY DIRECTORY B23

ATHABASCA AB

CYWM

REF	N54 44 35 W113 12 19 3.1ENE 18°E UTC-7(6) Elev 1971' A5015 E-15 E-16 LO1 RCAP	
OPR	Town & County of Athabasca 780-675-2273 Reg Ldg fees	
PF	B-1 C-2,3,4,5	
FLT PLN	NOTAM FILE CYWM	
FIC	Edmonton 866-WXBRIEF (Toll free within Canada) or 866-541-4102 (Toll free within Canada & USA)	
ACC	Edmonton IFR 888-358-7526 or 780-890-8304/8305	
RWY DATA	Rwy 16/34 4000x100 asphalt	
RCR	Opr Ltd maint	
LIGHTING	16-(TE LO), 34-(TE LO)	
COMM		
ATF	tfc 123.2 5NM 5000 ASL	
NAV		
NDB	X2 329 (L) N54 44 15 W113 12 02 321° 0.4NM to A/D Pvt Unmonitored	
CAUTION	Deer &/or moose may be in vic rwy.	

ATIKOKAN (GEN HOSP) ON (Heli)

CKF3

REF	N48 45 W91 36 1°W UTC-5 Elev 1285' A5001 A5008	
OPR	Atikokan Gen Hosp 807-597-4215/1305 Cert PPR	
PF	B-1,4 C-2,3,5	
FLT PLN	NOTAM FILE CYHD	
FIC	Winnipeg 866-WXBRIEF (Toll free within Canada) or 866-541-4103 (Toll free within Canada & USA)	
PAD DATA	86' dia Rstd max heli length 57.3'	
LIGHTING	RY O/R	
COMM		
RCO	Winnipeg rdo 123.275 (FISE) (U)	
MF	tfc 122.3 (no ground station) 5NM centred on Atikokan Muni A/D 2.1NM NW 4500 ASL (CAR 602.98).	
PRO	Arr/dep btwn 291°-301°.	

CANADA FLIGHT SUPPLEMENT / GPH 205

Effective 0901Z 20 November 2008 to 0901Z 15 January 2009

B24 AERODROME/FACILITY DIRECTORY

ATIKOKAN MUNI ON

CYIB

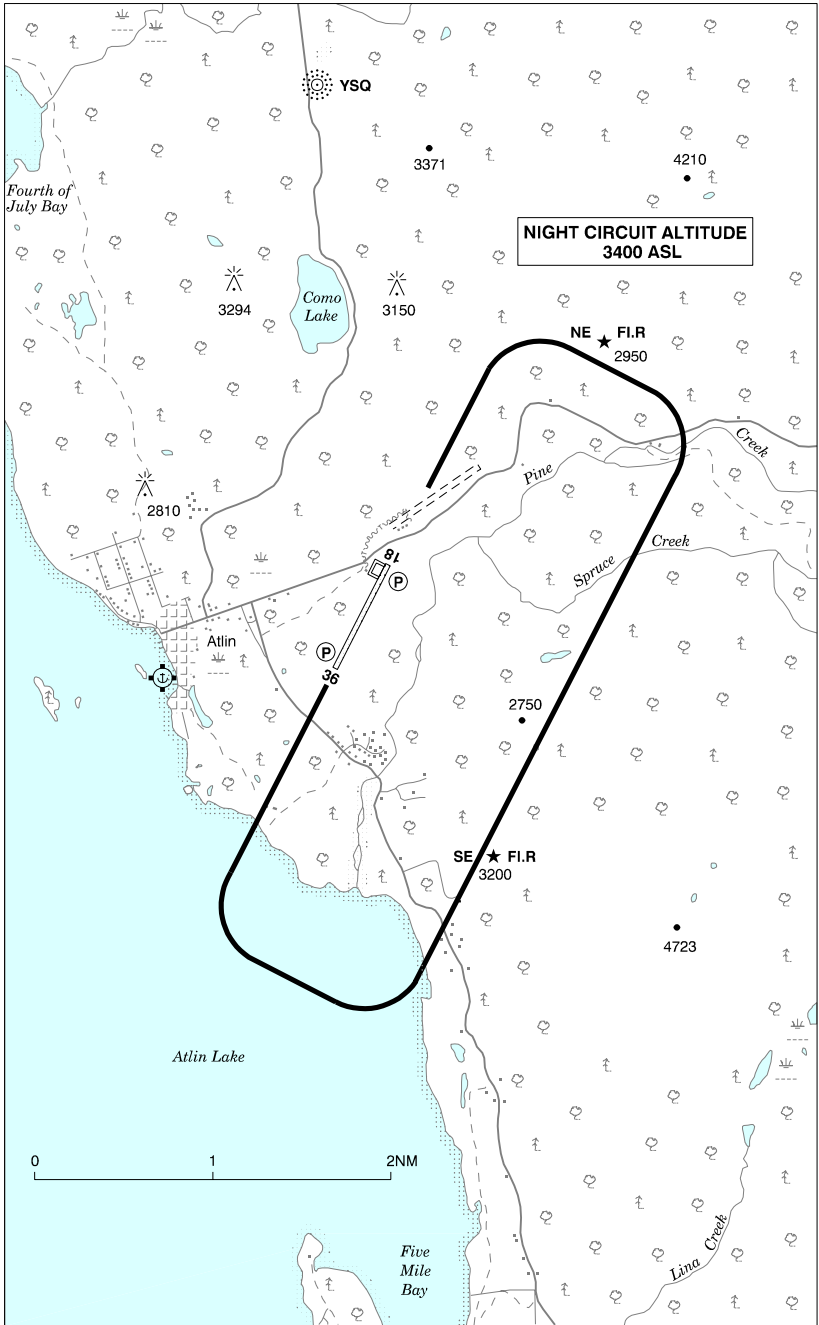
REF	N48 46 26 W91 38 19 1NW 1°W UTC-5 Elev 1408' A5001 A5008 E-17 LO4 HI4 CAP	
OPR	Township 807-597-2738/6755 or Fax 807-597-6186 Reg	
PF	A-1 C-2,3,4,5,6	
FLT PLN	NOTAM FILE CYHD	
FIC	Winnipeg 866-WXBRIEF (Toll free within Canada) or 866-541-4103 (Toll free within Canada & USA)	
SERVICES	Call out chg may be levied for one or more svcs.	
FUEL	100LL, JB PNR 807-597-2135/2390 or Opr, 12-20Z† Mon-Fri exc hol.	
RWY DATA	Rwy 04(040°)/22(220°) 3500x100 asphalt Rwy 04 up 0.69%	
RCR	Opr Ltd win maint. Thld rwy 22 turnaround area deteriorates in spring & fall.	
LIGHTING	04-(TE LO) V1, 22-(TE LO) V1 ARCAL-122.3 type J	
COMM		
RCO	Winnipeg rdo 123.275 (FISE) (U)	
MF	tfc 122.3 (no ground station) 5NM 4500 ASL (CAR 602.98)	
NAV		
NDB	IB 209 (M) N48 49 31 W91 34 39 220° 3.6NM to thld 22	
PRO	Rgt hand circuits rwy 22 (CAR 602.96).	
CAUTION	Aprt vehicles not radio-equipped.	

CANADA FLIGHT SUPPLEMENT / GPH 205

Effective 0901Z 20 November 2008 to 0901Z 15 January 2009

AERODROME/FACILITY DIRECTORY B25

ATLIN VFR TERMINAL PROCEDURES CHART - NIGHT CIRCUIT PROCEDURE



CANADA FLIGHT SUPPLEMENT / GPH 205

Effective 0901Z 20 November 2008 to 0901Z 15 January 2009

B26 AERODROME/FACILITY DIRECTORY

ATLIN BC

CYSQ

REF	N59 34 36 W133 40 08 1NE 25°E UTC-8(7) Elev 2348' A5021 A5099 D-12 LO5 HI2 CAP	
OPR	Atlin District Aprt Society 250-651-7636 Reg	
PF	B-1 C-2,3,4,5	
CUST	AOE/15 888-226-7277 17-05Z‡	
FLT PLN	NOTAM FILE CYSQ	
FIC	Whitehorse 866-WXBRIEF (Toll free within Canada) or 866-541-4107 (Toll free within Canada & USA)	
SERVICES	1	
FUEL	100, JB 16-06Z‡ O/T 250-651-7635	
OIL	5/50 (ltd)	
S	5,6	
RWY DATA	Rwy 18/36 3950x75 gravel	
RCR	Opr 16-05Z‡ Snow plowed or compacted in win.	
LIGHTING	18(TE ME) P1 4.5°, 36-AS(TE ME) P1 ARCAL-123.2 type K exc RILS on hi setting only. Retro-reflective markers on twy & aprons only.	
COMM		
RCO	Whitehorse rdo 126.7 (FISE)	
ATF	tfc 123.2 5NM 5300 ASL	
NAV		
NDB	YSQ 260 (M) N59 37 34 W133 40 37 153° 2.6NM to A/D	
PRO	Rgt hand circuits rwy 36 (CAR 602.96). Night circuit: Alt 3400 ASL. Not auth unless both hazard bcns & PAPI opr. All turns to be completed within perimeter of hazard bcns. See VTPC.	
CAUTION	Only pilots familiar with lcl terrain should use this aprt dur hrs of darkness. Gnd rises sharply fr shoulder edge along E side of rwy.	

ATTAWAPISKAT ON

CYAT

REF	N52 55 39 W82 25 55 Adj NW 12°W UTC-5(4) Elev 30' A5018 E-18 LO3 HI1 HI4 RCAP		
OPR	Govt of Ontario 807-473-2082 Cert		
PF	C-1,2,4,5		
FLT PLN	NOTAM FILE CYAT		
FIC	London 866-WXBRIEF (Toll free within Canada) or 866-541-4104 (Toll free within Canada & USA)		
RWY DATA	Rwy 06(061°)/24(241°) 3493x100 gravel		
RCR	Opr 13-22Z‡ Mon-Fri exc hols. APM 705-997-2124 Rwy cond subject to seasonal & climatic vars.		
LIGHTING	06-(TE ME) AP, 24-(TE ME) AP ARCAL-122.8 type K		

CANADA FLIGHT SUPPLEMENT / GPH 205

Effective 0901Z 20 November 2008 to 0901Z 15 January 2009

AERODROME/FACILITY DIRECTORY B27

ATTAWAPISKAT ON (Cont'd)

CYAT

COMM	
DRCO	London rdo 126.7 (FISE)
ATF	tfc 122.8 5NM 3000 ASL
NAV	
NDB	WAPISK YAT 260 (M) N52 55 49 W82 26 00 at A/D
CAUTION	P-lines 55 AGL on apch 1870' fr the thld of rwy 06.

ATWOOD ON

CNN4

REF	N43 41 39 W81 00 09 1.3NE 9°W UTC-5(4) Elev 1232' A5000 F-21	
OPR	B & C Poelstra 519-356-9077 Reg PPR	
PF	B-1 C-2,3,4,5,6	
FLT PLN	NOTAM FILE CYKF	
FIC	London 866-WXBRIEF (Toll free within Canada) or 866-541-4104 (Toll free within Canada & USA)	
SERVICES		
S	5,6	
RWY DATA	Rwy 04/22 1600x40 asphalt	
RCR	Opr Ltd win maint	
COMM		
ATF	tfc 122.8 5NM 4200 ASL	
PRO	Rgt hand circuits rwy 22 (CAR 602.96), left hand circuits rwy 04.	

ATWOOD / COGHLIN ON

CAT1

REF	N43 41 00 W81 00 16 1.2NE 9°W UTC-5(4) Elev 1215' A5000 F-21	
OPR	Coghlin Aviation 519-356-2326 or 519-291-8842 Reg	
PF	B-1 C-2,3,4,5,6	
FLT PLN	NOTAM FILE CYKF	
FIC	London 866-WXBRIEF (Toll free within Canada) or 866-541-4104 (Toll free within Canada & USA)	
SERVICES		
FUEL	100LL & MG-1 ltd qty, call opr	
S	4,5	
RWY DATA	Rwy 04/22 2000x70 turf Thld 04 displ 350'	
RCR	Opr Rwy soft in spring. Ltd win maint.	
COMM		
ATF	tfc 122.8 5NM 4200 ASL	
PRO	Rgt hand circuits rwy 04 (CAR 602.96), left hand circuits rwy 22.	
CAUTION	Asphalt/turf rwy aprx 1200' NW thld rwy 22 (Atwood 122.8 5NM 4200 ASL). Marked P-lines on apch to rwy 04.	

CANADA FLIGHT SUPPLEMENT / GPH 205

Effective 0901Z 20 November 2008 to 0901Z 15 January 2009

B28 AERODROME/FACILITY DIRECTORY

AUPALUK QC

CYLA

REF	N59 17 48 W69 35 59 0.2E 28°W UTC-5(4) Elev 119' A5027 D-15 LO5 CAP	
OPR	Administration Régionale Kativik 819-964-2968 1230-2230Z† Mon-Fri O/T 819-964-3434 Ext 154 Fax 819-964-2462 Cert	
PF	A-1 C-2,4,5	
FLT PLN	(bil) NOTAM FILE CYVP	
FIC	Québec 866-GOMÉTÉO or 866-WXBRIEF (Toll free within Canada) or 866-541-4105 (Toll free within Canada & USA)	
ACC	Montréal 800-633-1353	
CARS	819-491-7255, ops hrs 1230-2230Z†	
WX	METAR dur CARS hrs	
RWY DATA	Rwy 04(043°)/22(223°) 3511x100 gravel Rwy 04 up 1.33%.	
RCR	Opr	
LIGHTING	04-AS(TE ME), 22-AS(TE ME) ARCAL-122.1 type J	
COMM		
MF/ATF	aprt rdo (English only) ltd hrs O/T tfc 122.1 5NM 3200 ASL (CAR 602.98)	
APRT RDO	122.1 (V) 1230-2230Z†	
NAV		
NDB	YLA 248 (L) N59 18 11 W69 36 03 at A/D Unmonitored when CARS clsd	

AVEY FIELD STATE / LAURIER WA USA

69S

REF	N48 59 54 W118 13 22 20°E UTC-8(7) Elev 1655' A5005 E-15	
OPR	Washington State 206-764-4131 or 800-552-0666	
FLT PLN		
FIC	Kamloops 866-WXBRIEF (Toll free within Canada) or 866-541-4101 (Toll free within Canada & USA)	
RWY DATA	Rwy 16/34 2000x75 gravel Thld 16 displ 600'.	
RCR	Opr No win maint	
COMM		
ATF	tfc 123.2 5NM 4700 ASL	